

BREEDING FOR THE FUTURE

WILKINSON FARMS SIMMENTALS

THURSDAY

FEBRUARY 19, 2026

1:00 PM CST AT THE C-B SALE FACILITY

4 MILES SOUTH OF THE RANCH, MONTPELIER, NORTH DAKOTA

28TH ANNUAL PRODUCTION SALE



WELCOME TO THE



TERRY AND CATHY SCHLENKER

BREEDING FOR THE FUTURE



AARON, RANDI, DAWSON, QUINN,
CREED AND BANKS SCHLENKER



JORDAN, SUSAN, ALAURA, JOSHUA,
JOSEPH AND LIBERTY SCHLENKER



CHRISTIAN, CASSIA AND
CYLAN KLEMZ



GARNET SCHLENKER

THANK YOU for doing your part to feed the world!

-Looking back on 27 sales and over 40 years breeding Simmentals...we've seen some things. We've ridden the waves of the industry alongside you and helped rudder the ship. During this time, we have found that the herd bull may pull us in the direction we're headed, but the cow carries us and will ultimately determine how we weather the storm.

I for one, -like many others- could get used to this smooth sailing trend we're enjoying in the cattle markets and hyperfocus on a terminal direction to capitalize on every pound and dollar possible...but if you and I neglect the maternal ship of our herds, how long will we stay afloat?

Breeding to make heifers has always been our central focus, while maintaining a balance-bred animal to prevent sacrificing any of the important traits you prioritize promoting in your herd when buying bulls to take your operation into the future.

We take pride in producing cattle that calve easily but also challenge the projected limitations of the stereotype, that suggests, "Low BW translates into low growth."

We are working to change the culture to expect more...to believe, yes, we can create breeding stock that do it all.

This year's set of bulls are among the deepest groups we have ever tested...especially for: top quality, naturally muscled, easy going herd bull prospects with an array of sons that have risen to the top of their respective sire groups, not only here, but breed wide.

We encourage you to stop by in the weeks leading up to the sale to see our offering for yourself. In doing so you will receive \$500 OFF the purchase of a bull on sale day. (See next page for qualification details) If you can't make it to the ranch, we look forward to hearing from you by call or text and at the sale.

We pray blessings on you and your family!

AARON SCHLENKER AND EVERYONE AT WILKINSON FARMS SIMMENTALS

WE REQUEST NO FRIDAY NIGHT OR SATURDAY CALLS OR VISITS, PLEASE.

www.wilkinsonfarmssimmentals.com - eatbeef@daktel.com

Follow us on Facebook - Wilkinson Farms Simmentals 



28TH ANNUAL PRODUCTION SALE

THURSDAY

FEBRUARY 19, 2026

1:00 PM CST AT THE C-B SALE FACILITY

4 MILES SOUTH OF THE RANCH, MONTPELIER, NORTH DAKOTA

SALE DAY PHONES

Terry Schlenker	701-320-2171
Aaron Schlenker	701-269-8271
Jordan Schlenker	701-320-1895
Corey Wilkins	256-590-2487
Jared Murnin	406-321-1542
Cathy Schlenker	701-320-8248

SALE LOCATION

Refer to map on page 4 for google map to our ranch and C-B Sale Facility. SALE LOCATION ADDRESS: 5314 76TH AVE SE, JUD, ND

Directions to WFS Ranch: From Hwy 281, turn west on 49th St SE (on gravel) at the Montpelier sign, then go 6 ½ miles on 49th St SE. Turn right (north) onto our ½ mile L-shape driveway. From West I-94: Take exit 248, turn right to follow the south paved frontage road to the west until it takes a sharp left. Go south 11 miles. When pavement ends and turns into gravel, continue south for 2 miles to the intersection of 73rd Ave and 49th St SE. Turn left and go 3 ½ miles. Turn left (north) at our mailbox onto our driveway.

C-B Sale Facility on sale day: From Gackle – 13 miles east on ND Hwy 46 to 76th Ave SE and north ¾ mile. OR 7 ½ miles west of the Junction of Hwy 281 and Hwy 46, north ¾ mile and right to the C-B Sale Facility.

SALE REPRESENTATIVES

Tracy Harl, Auctioneer	406-469-3852
Jory Boote, <i>Cattle Business Weekly</i>	701-789-7047
Kelly Klein, <i>TriState Livestock News</i>	701-320-5817
Russ Danielson, ASA	701-261-2742
Marty Ropp, Allied Genetic Resources	406-581-7835

VIDEOS AND ONLINE BIDDING

Videos available early February at www.wilkinsonfarmssimmentals.com.

Watch the sale and bid online at DV Auction. See page 24.

DVAuction
Broadcasting Real-Time Auctions

IN CASE OF STORMY WEATHER

Visit our Wilkinson Farms Simmentals Facebook page or call the Sale Day Phone Numbers listed on this page.

ANNOUNCEMENTS

- Please register for a bidding number prior to the sale!
- Announcements made sale day and from the auction block, during the sale, take precedence over printed material associated with this sale.
- Wilkinson Farms Simmentals semen retention rights for every bull sold through the Breeding for the Future production sale or off the ranch each year can be found in detail on page 2.
- All cattle sell under the terms and conditions of the American Simmental Association.
- Any cattle going to CANADA will be delivered to the nearest ND/CAN border crossing facility. All costs for testing and export are the responsibility of the buyer.

SALE DISCOUNT

This year when you visit the ranch on or before February 17, we are offering \$500 OFF the purchase of one bull of \$4,500 or more at auction for the Wilkinson Farms Simmentals, Breeding for the Future, spring auction sale. **Limit one discount per ranch, please. We request no Saturday visits, please.**

LODGING

Comfort Inn	701-252-7125
811 20th St. SW, Jamestown, ND	
Hampton Inn	701-952-6500
2400 85h Ave SW, Jamestown, ND 58401	
Baymont Inn	701-252-3611
507 25th St. SW, Jamestown, ND	

LIABILITY

Any person attending the sale does so at his/her own risk. Neither the sale management, owners, sale facility owners nor any person connected with this sale, assumes any liability, legal or otherwise.

COMPLIMENTARY SALE DAY MEALS

Breakfast refreshments will be available after 9:15 AM for those arriving early to view the cattle. A noon meal is served from 11:30 AM-12:45 PM.

BREEDING FOR THE FUTURE ADVANTAGE

- Feed bulls until April 1st or when we start delivering bulls. After April 1, 2026 we will charge \$3.50/day per animal.
- Test all bulls and guarantee their soundness at delivery.
- BULL DELIVERY: We deliver bulls, free of charge, up to a 200-mile radius of our ranch. \$1.50/mile after 200 miles. Often, we make trips beyond that radius. We will do our best to accommodate each purchase for the most economical delivery and will help to coordinate long-distance transportation. Any buyer who wants us to keep their bull(s), beyond our delivery date, is responsible for pick up and delivery, at the buyer's expense.
- FEMALE DELIVERY: We will help to coordinate deliveries. Bred females need to be removed within 2 weeks after the sale.
- We ultrasound all bulls and all replacement females.
- Wilkinson Farms now has data for their entire herd with 28 years of ultrasound history.
- All sale animals will have genomic-enhanced EPDs and Right Choice evaluations.

LIVESTOCK INSURANCE

Animal injuries or death are the responsibility of the new owners. We highly recommend that you insure your livestock on sale day. Contact information is listed below.

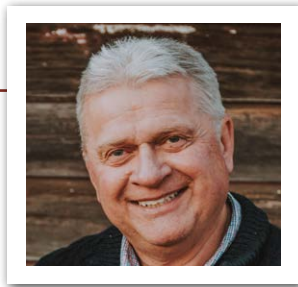
Mark Smith – Liberty Mutual 515-229-5227

SALE MANAGEMENT

Marty Ropp 406-581-7835
Corey Wilkins 256-590-2487
Jared Murnin 406-321-1542
alliedgeneticresources.com

ALLIED
GENETIC RESOURCES

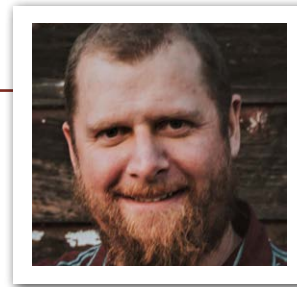
SALE CONTACTS



TERRY SCHLENKER
701-320-2171



AARON SCHLENKER
701-269-8271



JORDAN SCHLENKER
701-320-1895

WILKINSON FARMS SIMMENTALS PUREBRED AVERAGE EPDs

	CE	BW	WW	YW	MCE	MILK	MWW	STAY	DOC	CW	YG	MARB	REA	\$API	\$TI
EPD	10.	0.5	88.3	136.0	6.5	28.8	72.8	18.1	13.3	40.2	-0.30	0.63	0.99	169.0	99.5
RANK	50	35	20	20	35	15	15	20	13.3	25	75	5	30	10	10

WILKINSON FARMS SIMMENTALS HYBRID AVERAGE EPDs

	CE	BW	WW	YW	MCE	MILK	MWW	STAY	DOC	CW	YG	MARB	REA	\$API	\$TI
EPD	10.7	0.0	85.9	131.0	6.6	26.6	69.6	16.8	13.4	41.7	-0.20	0.71	0.84	157.0	95.0
RANK	60	50	25	35	60	30	25	35	40	40	40	15	25	20	15

ABOUT THE CATTLE

VACCINATION SCHEDULE

BULL SHOT RECORDS

- At birth: Inforce
- May 2025: Inforce, BVD One Shot, Vision 7
- Weaning: Bovishield Gold One Shot, Ultra Bac 7 w/Somnus
- Boosted with Bovishield Gold 5, Ultra Bac 7 w/Somnus, Dectomax Injectable, Poured with Clean Up

BRED HEIFER SHOT RECORDS

- December 2025: Scour Bos 9 & poured
- January 2026: Boosted with Scour Bos 9, Virashield VL5, poured with Dectomax, confirmed bred
- Received magnets as yearlings

SEMEN INTEREST

WILKINSON FARMS SIMMENTALS SEMEN RETENTION RIGHTS FOR EVERY BULL SOLD THROUGH THE BREEDING FOR THE FUTURE PRODUCTION SALE OR OFF THE RANCH EACH YEAR ARE AS FOLLOWS:

- 1/2 (one half) semen interest on any bull sold for up to \$25,000.
- 1/3 (one third) semen interest on any bull sold from \$25,001 to \$40,000.
- 1/4 (one quarter) semen interest on any bull sold for over \$40,000.
- If semen sales are made on a Wilkinson Farms Simmentals raised/owned bull, the new bull partner/buyer will receive royalties for sold semen on the applicable bull once expenses are recovered. Such expenses may result from, but are not exclusive to: semen collection(s), housing, trucking, travel expenses, storage fees, etc.
- Wilkinson Farms Simmentals reserves the right to charge sales fees for semen sold which would be reflected on royalty payments of any applicable bull where semen has been collected and sold.
- The action of purchasing a bull from Wilkinson Farms Simmentals by auction, or off the ranch, indicates the buyer assumes the terms of this pre-sale agreement.
- Negotiation of any pre-sale proposals or adjustments to the terms listed previously will close one hour prior to the scheduled sale time.

WILKINSON FARMS SIMMENTALS FAMILY HIGHLIGHTS



Wilkinson Farms was honored to be a part of the North Dakota State Simmental Classic sale in Bismarck, ND in December 2025—providing a bred heifer and embryo lots.



Terry & Cathy Schlenker, along with Cassia & Cylan Klemz attended the annual Fall Focus in Columbia, MO in August 2025.



Aaron & Randi Schlenker represented Wilkinson Farms at the North Dakota Stockman's Association's annual ball in December 2025.



Micah & Sofia Schlenker welcomed a beautiful baby girl, Sienna Grace in March 2025.

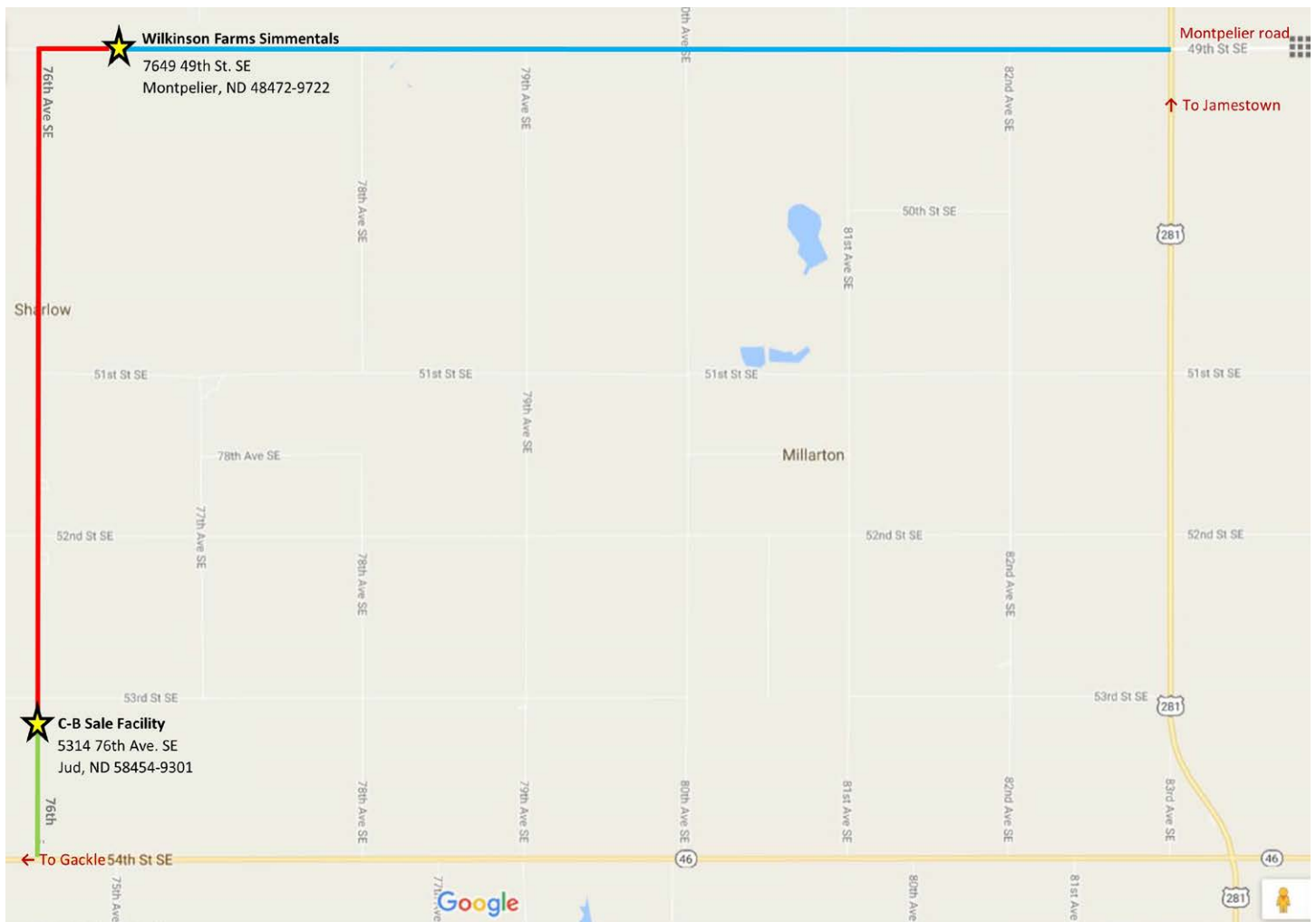


“Family is not an important thing. It’s EVERYTHING.” - Micheal J. Fox

WHERE TO FIND IT IN THE BOOK

About the Cattle	2	DV Auction	24	Sale Contacts	2
ASA Quick Reference Guide to EPDs	34	Family Highlights	3	Sale Information	1
Average EPDs of Offering	2	Map to Ranch and Sale Facility	4	Sale Manager Letter	36
Bull Offering	6-27	Percentile Ranking Tables	37	Semen Interest	2
Bred Female Offering	28-33	RightMate and RightChoice	5	Welcome Letter	IFC

RANCH LOCATION AND SALE FACILITY



SALE LOCATION ADDRESS: 5314 76TH AVE SE, JUD, ND

Directions to WFS Ranch: From Hwy 281, turn west on 49th St SE (on gravel) at the Montpelier sign, then go 6 ½ miles on 49th St SE. Turn right (north) onto our ½ mile L-shape driveway. From West I-94: Take exit 248, turn right to follow the south paved frontage road to the west until it takes a sharp left. Go south 11 miles. When pavement ends and turns into gravel, continue south for 2 miles to the intersection of 73rd Ave and 49th St SE. Turn left and go 3 ½ miles. Turn left (north) at our mailbox onto our driveway.

C-B Sale Facility on sale day: From Gackle – 13 miles east on ND Hwy 46 to 76th Ave SE and north ¾ mile. OR 7 ½ miles west of the Junction of Hwy 281 and Hwy 46, north ¾ mile and right to the C-B Sale Facility.

Improved Buying Confidence with Greater Genomic **ASSURANCE**

Access to more and better information has always been key to making wise decisions. The evolution and improvement of genetic evaluation tools too has given us an ever-clearer picture of the true genetic makeup of cattle and thus a better view of the value proposition. RightMate, powered by Top Genomics LLC is taking the evaluation of genetics and genomics one giant step further. By combining specific genomic information with the long-proven value of EPDs, this new advancement in technology improves our depth and precision when evaluating the actual ability to transmit value and profit.

The 3 Accreditation Logos below are designed to simplify bull selection and improve buyer confidence by more accurately describing the genetics offered and by reducing risk. What this means to you as a customer is a much greater assurance that you are getting both what you want and need from the genetics you purchase. What it means to your seedstock provider is access to RightMate technology that simply sets them apart from the rest of the industry.



ACCREDITED GENOMIC PLUS – For the majority of producers who simply need consistent and balanced genetic improvement, without genomic setbacks, G+ Accredited bulls should be on your list for premium purchase. These sires will absolutely move you forward for both cost reduction and income producing traits and substantially reduce risk when compared to all other evaluation programs. It's simple, the right genes are in these bulls to help secure a profitable future and they have great EPDs to match!



ACCREDITED CALVING EASE – Simply find bulls with the ACE logo for third party Accredited, secure Calving Ease bulls. Though we have had tools in the past to assist in choosing heifer bulls, we've never had one nearly this effective. The reduced risk that comes with this genomic certification will simply make your decisions easier and your heifer calving season more successful. Purchase special purpose ACE bulls with confidence. They will deliver consistent and predictable calving ease.



ACCREDITED TERMINAL MATE – Just like an ATM machine makes it simpler to access your cash, the ATM Logo highlights bulls accredited to generate extra cash income as soon as your next calf crop! These bulls are meant specifically to use only on mature cows and for the purpose of adding performance, pay weight and end product value to market.

BREEDING FOR THE FUTURE BULLS



WS 1N Sells as Lot 1.

WS MISS REGAL Z148—She was aptly named—for she is a beautiful, powerhouse cow. Just another WS Hot Beef daughter making a name for herself, albeit through the exceptional daughters she produces. Her Proclamation daughters had 3 bulls in last year's sale, with one going to Wildberry Farms in Illinois.

These Full Figures daughters highlighted in Lots 1-4, may be her best flush yet. There is a full sister to them working in Doug Bichler's herd. As far as longevity goes, Z148 will be 14 by sale day and due to calve around then also.



WS 2N Sells as Lot 2.

1 WS 1N

Act. BW		93	110	Adj. WW		745	104	Adj. YW		1449	109	ADG	4.4	SC	38.3	CLAW	4	ANGLE	6	MARB	2.52	87	RE	16.80	111	BF	0.26	96
---------	--	----	-----	---------	--	-----	-----	---------	--	------	-----	-----	-----	----	------	------	---	-------	---	------	------	----	----	-------	-----	----	------	----

SIRE GIBBS 9114G ESSENTIAL
JC MR PONTIAC D114K
 FSCR D114 LUCILLE B089XP

DAM HOOK'S FULL FIGURES 11F
WS KUDOS K129
 WS MISS REGAL Z148

CE	BW	WW	YW	MCE	MILK	MWW	
7.7	1.5	93.6	145.4	7.1	32.0	78.7	
RANK	75	55	15	10	30	10	
STAY	DOC	CW	YG	MARB	REA	\$API	\$TI
22.4	12.7	55.1	-0.27	0.31	1.25	156.6	93.3
RANK	2	40	5	85	30	4	20

- Great performing Pontiac son from a powerhouse cow family
- Two prominent cattlemen have commented that he's the stoutest Pontiac son they've seen
- He was our top gaining bull post weaning

2 WS 2N

Act. BW		83	99	Adj. WW		752	105	Adj. YW		1405	106	ADG	4.1	SC	39.4	CLAW	6	ANGLE	5	MARB	3.04	105	RE	13.74	91	BF	0.32	119
---------	--	----	----	---------	--	-----	-----	---------	--	------	-----	-----	-----	----	------	------	---	-------	---	------	------	-----	----	-------	----	----	------	-----

SIRE WS PROCLAMATION E202
KBHR BOLD RULER H152
 BAR CK MS X38 106Z

DAM HOOK'S FULL FIGURES 11F
WS KEEP THE FAITH K131
 WS MISS REGAL Z148

CE	BW	WW	YW	MCE	MILK	MWW	
14.2	0.6	81.6	130.3	8.9	39.6	80.3	
RANK	15	40	45	30	10	1	
STAY	DOC	CW	YG	MARB	REA	\$API	\$TI
19.4	17.1	40.4	-0.19	0.72	0.72	178.7	99.0
RANK	15	4	30	99	3	85	4

- Our only Bold Ruler son and he really clicked with this mating
- WS Hot Beef on both sides of the pedigree means maternal and carcass are locked in
- #3 in ADG since weaning—106 days



WS 12N Sells as Lot 3.



WS 18N Sells as Lot 4.



WS MISS REGAL Z148 Maternal grandam of Lots 1-4.

3 **WS 12N**  **PB SM**
 Homozygous Black ASA #4535940 Homozygous Polled 12N **BD: 1/16/2025**

Act. BW	Adj. WW	Adj. YW	ADG	SC	CLAW	ANGLE	MARB	RE	BF
81	765	1421	4.1	40.6	5	5	3.23	17.04	0.34
97	106	107	-	-	-	-	112	112	126

SIRE GIBBS 9114G ESSENTIAL DAM HOOK'S FULL FIGURES 11F
KBHR ABSOLUTE K125 **WS KISS FROM A ROSE K132**
 KBHR MEDORA G132 WS MISS REGAL Z148

EPD	CE	BW	WW	YW	MCE	MILK	MWW	
RANK	25	45	25	20	35	2	4	
EPD	STAY	DOC	CW	YG	MARB	REA	\$API	\$TI
RANK	10	10	35	75	15	10	10	15

- Potential Herdsire Prospect
- This bull impresses more every day. 81lbs to 100 plus indexes across the board
- 40 scrotal and was our #2 ADG bull
- Sire was a high seller in the Keller's 2023 sale
- Once again Hot Beef on both sides of the pedigree

4 **WS 18N**  **PB SM**
 Heterozygous Black ASA #4535794 Homozygous Polled 18N **BD: 1/22/2025**

Act. BW	Adj. WW	Adj. YW	ADG	SC	CLAW	ANGLE	MARB	RE	BF
78	717	1160	2.8	35.4	5	6	2.70	17.64	0.26
93	102	95	-	-	-	-	81	113	113

SIRE GIBBS 9114G ESSENTIAL DAM HOOK'S FULL FIGURES 11F
KBHR ABSOLUTE K125 **WS KINDRED K128**
 KBHR MEDORA G132 WS MISS REGAL Z148

EPD	CE	BW	WW	YW	MCE	MILK	MWW	
RANK	25	20	60	60	15	4	15	
EPD	STAY	DOC	CW	YG	MARB	REA	\$API	\$TI
RANK	5	10	55	15	30	1	20	30

- A calving ease prospect—78lb birth weight with above average weaning
- Full brother in blood to Lot 3, but not as powerful
- A versatile bull that can be used on red or black heifers and cows
- Showed one of our biggest Ribeyes

BREEDING FOR THE FUTURE BULLS



FOR REFERENCE **KBHR ABSOLUTE K125**

ASA #4104243

	CE	BW	WW	YW	MCE	MILK	MWW	STAY	DOC	CW	YG	MARB	REA	\$API	\$TI
EPD	18.0	-2.5	72.8	118.6	10.0	27.8	64.2	17.1	14.8	35.2	-0.28	0.56	1.02	173.0	93.2
RANK	3	5	75	50	3	20	45	35	20	40	85	10	25	10	20

5 **WS 62N**

Homozygous Black
ASA #4535953

Homozygous Polled
62N



PB SM
BD: 2/22/2025

Act. BW	Adj. WW	Adj. YW	ADG	SC	CLAW	ANGLE	MARB	RE	BF
72	738	1325	3.7	37.6	4	6	3.33	14.14	0.24
89	103	100	-	-	-	-	115	93	89

SIRE GIBBS 9114G ESSENTIAL
KBHR ABSOLUTE K125
KBHR MEDORA G132

DAM WS ENHANCEMENT 25H
WS LUMINOSITY L20
WS LAST DANCE J86

	CE	BW	WW	YW	MCE	MILK	MWW
EPD	18.0	-4.1	75.2	116.8	11.0	29.2	66.7
RANK	3	2	70	55	1	15	35

	STAY	DOC	CW	YG	MARB	REA	\$API	\$TI
EPD	16.8	14.3	35.4	-0.17	0.74	0.85	170.6	95.3
RANK	40	25	45	99	3	60	10	15

Straight up, soggy middled, heifer bull with a perfect performance slashline of 89/103/100 and a 115 ratio on IMF. He also racked up 5 EPDs better than both parents. -Aaron

6 **WS 113N**

Homozygous Black
ASA #4535804

Homozygous Polled
113N



PB SM
BD: 3/22/2025

Act. BW	Adj. WW	Adj. YW	ADG	SC	CLAW	ANGLE	MARB	RE	BF
75	707	1299	3.7	37.1	6	5	3.01	13.89	0.21
92	98	98	-	-	-	-	104	92	78

SIRE GIBBS 9114G ESSENTIAL
KBHR ABSOLUTE K125
KBHR MEDORA G132

DAM LCDR FAVOR 149F
WS FULL CIRCLE L38
WS SWEET SIXTEEN F16

	CE	BW	WW	YW	MCE	MILK	MWW
EPD	15.6	-2.0	73.3	108.9	8.3	25.3	61.9
RANK	10	10	75	75	15	35	60

	STAY	DOC	CW	YG	MARB	REA	\$API	\$TI
EPD	19.6	14.8	29.8	-0.25	0.70	0.92	180.0	95.3
RANK	15	20	65	90	4	45	4	15

A heifer bull type whose dam is a full sister to WS Sweet Katch. He sports three EPDs higher than both parents, including STAY, MARB and API. -Aaron





FOR REFERENCE **WS ENHANCEMENT 25H**

ASA #3764886

	CE	BW	WW	YW	MCE	MILK	MWW	STAY	DOC	CW	YG	MARB	REA	\$API	\$TI
EPD	18.6	-4.4	82.7	134.0	11.4	26.5	67.8	18.6	15.7	49.0	0.05	0.94	0.58	203.3	109.3
RANK	2	1	40	25	1	30	30	20	10	10	99	1	99	1	1

7 **WS 6N**

Homozygous Black
ASA #4535936

Homozygous Polled
6N



PB SM

BD: 1/6/2025

Act. BW	Adj. WW	Adj. YW	ADG	SC	CLAW	ANGLE	MARB	RE	BF
82	781	1410	3.9	40.1	6	5	2.68	14.88	0.27
99	109	106	-	-	-	-	93	98	100

SIRE WS PROCLAMATION E202
WS ENHANCEMENT 25H
WS SWEET SIXTEEN F16

DAM 9 MILE ABUNDANCE 7507
WS KNOWLEDGE K134
WS FALSETTO F114

	CE	BW	WW	YW	MCE	MILK	MWW
EPD	10.0	2.1	97.2	150.9	6.7	29.2	77.7
RANK	50	70	10	10	35	15	5

	STAY	DOC	CW	YG	MARB	REA	\$API	\$TI
EPD	16.7	11.5	51.8	-0.21	0.70	0.92	170.0	104.5
RANK	40	55	10	95	4	45	10	3

- Enhancement did it again with this heavy-musclcd rascal
- He had below average BW to well above average weaning and yearling
- Maternal granddam is a maternal sister to WS All In who Kenner Simmentals used for several years



WS 6N Sells as Lot 7.

8 **WS 14N**

Heterozygous Black
ASA #4535902

Homozygous Polled
14N



PB SM

BD: 1/17/2025

Act. BW	Adj. WW	Adj. YW	ADG	SC	CLAW	ANGLE	MARB	RE	BF
73	739	1263	3.3	35.7	6	5	3.10	14.46	0.30
90	103	99	-	-	-	-	105	99	125

SIRE WS PROCLAMATION E202
WS ENHANCEMENT 25H
WS SWEET SIXTEEN F16

DAM 3C HARMONY 0575H B
WS LEGATO L25
WS NEXT STEP H68

	CE	BW	WW	YW	MCE	MILK	MWW
EPD	15.5	-2.4	93.4	147.3	9.0	29.0	75.6
RANK	10	10	15	10	10	15	10

	STAY	DOC	CW	YG	MARB	REA	\$API	\$TI
EPD	21.2	14.4	38.5	-0.07	0.63	0.54	174.6	100.9
RANK	5	20	35	99	10	99	10	5

A structural gem, 14N stands among the most physically complete bulls in the sale with an impeccable disposition and whose dam has a picture perfect udder. -Aaron



WS 14N Sells as Lot 8.

BREEDING FOR THE FUTURE BULLS



WS Love Language L8 is setting herself up for notoriety with a top shelf EPD profile and a number of less-sampled sire lines preceding her, adding the attraction of mating versatility to her already visually pleasing, self-presentation. This high efficiency young donor displays a picture perfect udder and appears to pass on her super fleshing ability, long spine, strong bone and athletic nature. Uniquely, she bears the "ATM" RightChoice badge despite a -5.0 BW EPD.

WS LOVE LANGUAGE L8 Dam of Lots 9, 10.

9 **WS 17N**  **PB SM**
Homozygous Black **Homozygous Polled** **BD: 1/19/2025**
 ASA #4535983 17N

Act. BW	Adj. WW	Adj. YW	ADG	SC	CLAW	ANGLE	MARB	RE	BF
73	731	1296	3.5	37.3	6	5	2.79	16.49	0.23
89	N/C	N/C	-	-	-	-	100	100	100

SIRE HOOK'S EAGLE 6E **DAM** WS ENHANCEMENT 25H
BAS MONEY MAKER J801 **WS LOVE LANGUAGE L8**
 BAS MISS BEACON F801 WS LIVE LAUGH LOVE J1

	CE	BW	WW	YW	MCE	MILK	MWW
EPD	16.7	-5.6	98.9	153.2	9.5	27.4	76.9
RANK	5	1	5	5	5	25	10

	STAY	DOC	CW	YG	MARB	REA	\$API	\$TI
EPD	16.9	13.0	59.4	-0.23	0.73	1.30	195.2	116.3
RANK	40	35	3	95	3	3	1	1

WS Making Noise has been on my radar all year. Not just for his blaze face and number set but also the maternal cows behind him. He spent the summer at the technologically progressive BovaGen, with his dam until late August when he was weaned. In the weeks to come, this gentle guy seemed to explode on pasture before going back to the drylot when we weaning the rest of his herd mates. Touching on his numbers a bit: he is the #1 son of BAS Money Maker for the BW, MARB, API and TI, EPDs. I expect he should stand among the better and most powerful calving ease bulls to surface this season. -Aaron



WS 17N Sells as Lot 9.



10 **WS 60N**  **PB SM**
Homozygous Black **Homozygous Polled** **BD: 2/22/2025**
 ASA #4535931 60N

Act. BW	Adj. WW	Adj. YW	ADG	SC	CLAW	ANGLE	MARB	RE	BF
84	569	1188	3.9	37.1	5	5	2.05	12.14	0.16
ET	ET	ET	-	-	-	-	70	86	89

SIRE WLE COPACETIC E02 **DAM** WS ENHANCEMENT 25H
CLEMSON ELITE 41J **WS LOVE LANGUAGE L8**
 AK/NDS CHRISTAL'S LEGACY WS LIVE LAUGH LOVE J1

	CE	BW	WW	YW	MCE	MILK	MWW
EPD	15.2	-3.6	84.3	137.3	9.6	21.1	63.2
RANK	10	2	35	20	5	70	50

	STAY	DOC	CW	YG	MARB	REA	\$API	\$TI
EPD	15.9	8.6	41.4	-0.19	0.48	0.68	169.0	98.2
RANK	50	85	25	99	15	90	10	10

I am excited to introduce this sharp, hard to fault son of WS Love Language L8. He expresses all the traits you want to find in a maternally backed, heifer bull with a twist of fresh genetics. As an individual, he stands out claiming the #2 CE, #1 BW, #1 MARB, #1 API, and #2 TI, EPD spots of all PB sons of the splashy new Clemson Elite bull. Though he appears in the top of the breed for BW, he holds on in the front of the breed for growth. If you're in search of a calving ease bull, look no further than a WS Love Language son. -Aaron



WS 60N Sells as Lot 10.



WS N47 Full sister to Lot 10.



FOR REFERENCE **CDI LEVITE 137L**

ASA #4279833

	CE	BW	WW	YW	MCE	MILK	MWW	STAY	DOC	CW	YG	MARB	REA	\$API	\$TI
EPD	6.1	3.0	87.8	135.7	4.6	33.1	77.0	21.9	13.7	38.1	-0.17	0.49	0.63	157.8	91.9
RANK	85	85	25	25	75	5	5	3	30	35	99	15	95	20	20

11 **WS 59N**

Homozygous Black Homozygous Polled
ASA #4535954 59N



PB SM
BD: 2/22/2025

Act. BW	Adj. WW	Adj. YW	ADG	SC	CLAW	ANGLE	MARB	RE	BF
79	749	1271	3.2	38.6	5	6	2.47	14.94	0.26
92	104	96	-	-	-	-	85	98	96

SIRE CDI JERICHO 291J DAM KBHR QUIGLEY C154
CDI LEVITE 137L **WS JADA J113**
 CDI MS LEGENDARY 1F WS BLACK VELVET B178

	CE	BW	WW	YW	MCE	MILK	MWW
EPD	11.0	-0.6	75.7	120.8	7.0	32.7	70.4
RANK	40	20	65	50	30	10	25

	STAY	DOC	CW	YG	MARB	REA	\$API	\$TI
EPD	19.3	13.6	37.0	-0.30	0.65	0.99	170.5	94.4
RANK	15	30	40	75	5	30	10	15

- Solid growth traits
- Top-notch maternal and a great cow family to back that up



12 **WS 66N**

Homozygous Black Homozygous Polled
ASA #4535888 66N



PB SM
BD: 2/24/2025

Act. BW	Adj. WW	Adj. YW	ADG	SC	CLAW	ANGLE	MARB	RE	BF
90	763	1391	3.9	38.7	6	5	2.73	16.77	0.27
105	106	105	-	-	-	-	94	111	100

SIRE CDI JERICHO 291J DAM BCLR MANIFESTO G352
CDI LEVITE 137L **WS FAVORITE SONG K19**
 CDI MS LEGENDARY 1F WS LIGHT IT UP H82

	CE	BW	WW	YW	MCE	MILK	MWW
EPD	6.5	3.1	96.9	148.0	5.6	33.2	81.6
RANK	85	85	10	10	55	5	2

	STAY	DOC	CW	YG	MARB	REA	\$API	\$TI
EPD	22.6	14.3	49.0	-0.31	0.46	1.18	161.8	97.0
RANK	2	25	15	75	15	10	15	10

This deep sided, gentle giant looks to be a maternal machine who will promote fleshing ability, milk, athleticism and stayability but still improve growth to add on to his up side. -Aaron



WS 66N Sells as Lot 12.



WS 33N Sells as Lot 13.

13	WS 33N								
	Homozygous Black ASA #4536015		Homozygous Polled 33N		PB SM BD: 1/29/2025				
Act. BW	Adj. WW	Adj. YW	ADG	SC	CLAW	ANGLE	MARB	RE	BF
71	793	1428	4.0	41.3	5	5	2.48	14.65	0.26
88	110	107	-	-	-	-	86	97	96

SIRE HOOK'S EAGLE 6E
IR/JLN BOOMER J425
KBHR IR/JLN ASTORIA G119

DAM CDI HIT MAN 306H
WS LOUANNA L72
WS SWEET TALKER G150

	CE	BW	WW	YW	MCE	MILK	MWW	
EPD	15.3	-1.0	91.3	145.0	7.9	29.3	74.9	
RANK	10	20	15	15	20	15	10	
	STAY	DOC	CW	YG	MARB	REA	\$API	\$TI
EPD	19.6	13.7	39.0	-0.39	0.38	1.11	170.1	98.6
RANK	15	30	35	40	25	15	10	10

- The only Boomer bull in the sale, who is as long as a train
- Low birthweight and high growth, with one of the largest measured scrotums
- Tremendous disposition
- 13 EPDs in the top 15% of the breed



WS 25N Sells as Lot 14.

14	WS 25N								
	Homozygous Black ASA #4535836		Homozygous Polled 25N		3/4 SM 1/4 AN BD: 1/26/2025				
Act. BW	Adj. WW	Adj. YW	ADG	SC	CLAW	ANGLE	MARB	RE	BF
81	739	1346	4.0	38.1	5	5	2.48	16.41	0.26
95	105	108	-	-	-	-	100	109	113

SIRE HOOK'S GALILEO 210G
KLEIN KICK OFF K068
KLEIN MISS G13

DAM KBHR HERO H109
WS KEIGHTIE K80
WS SPEEDWAY E31

	CE	BW	WW	YW	MCE	MILK	MWW	
EPD	13.9	0.4	91.4	147.1	8.8	28.1	73.8	
RANK	30	60	15	15	25	20	10	
	STAY	DOC	CW	YG	MARB	REA	\$API	\$TI
EPD	20.5	11.5	28.6	-0.27	0.62	0.80	166.6	97.2
RANK	10	70	80	30	25	35	10	10

This bull's pedigree is a couple generations away from the heavier used bloodlines offering a shot of freshness to the black side of Simm. From what I'm seeing early on in his daughters, I have a feeling the maternal of Klein Kick Off is going to be strong. On the bottom side, 25N comes from one of our most potent MARB cowlines. He registered perfect performance/carcass slashlines of 95/105/108 and 100/113/109. -Aaron



WS 122N Sells as Lot 15.


15	WS 122N								
	Homozygous Black ASA #4536013		Homozygous Polled 122N		PB SM BD: 4/2/2025				
Act. BW	Adj. WW	Adj. YW	ADG	SC	CLAW	ANGLE	MARB	RE	BF
98	770	1316	3.4	37.7	5	5	1.89	14.67	0.16
111	110	106	-	-	-	-	76	97	70

SIRE HOOK'S GALILEO 210G
KLEIN KICK OFF K068
KLEIN MISS G13

DAM WS HOT BEEF X38
WS ALIDA A52
WS MISS WANDERER W88

	CE	BW	WW	YW	MCE	MILK	MWW	
EPD	5.8	2.9	89.5	137.4	7.1	33.2	77.9	
RANK	90	80	20	20	30	5	4	
	STAY	DOC	CW	YG	MARB	REA	\$API	\$TI
EPD	20.7	15.7	27.4	-0.42	0.43	0.93	153.7	92.5
RANK	10	10	70	30	20	45	25	20

- A favorite Kickoff son out of WS CEO's dam
- This is probably A52's last calf here, as she is 13 years old and has a bad hip—but what a record! 106 WW index on 10 calves
- We really like the Kickoff calves. They are projected to be money makers.

16 WS 27N 

Homozygous Black **Homozygous Polled** **PB SM**
ASA #4535813 **27N** **BD: 1/28/2025**

Act. BW	Adj. WW	Adj. YW	ADG	SC	CLAW	ANGLE	MARB	RE	BF
54	625	1141	3.2	35.2	6	6	3.57	14.14	0.36
68	87	86	-	-	-	-	124	93	133




WS 27N Sells as Lot 16.

SIRE HOOK'S BEACON 56B **DAM** LBR5 GENESIS G69
CLRS GUARDIAN 317G **KLEIN MISS L028**
 CLRS ALWAYS XCELLENT BRIDLE BIT MISS G947

CE	BW	WW	YW	MCE	MILK	MWW
22.6	-6.2	77.5	115.1	10.7	16.3	55.0
RANK 1	1	60	60	2	95	85

STAY	DOC	CW	YG	MARB	REA	\$API	\$TI
22.2	10.8	24.5	-0.07	0.91	0.55	213.8	106.8
RANK 3	65	80	99	1	99	1	2

- Pure heifer bull here with over a 22 for CE and -6 in BW
- Good for Stay at 22
- Good Marbling at .91 and an IMF ratio of 124

17 WS 91N 

Homozygous Black **Homozygous Polled** **3/4 SM 1/4 AN**
ASA #4535984 **91N** **BD: 3/5/2025**

Act. BW	Adj. WW	Adj. YW	ADG	SC	CLAW	ANGLE	MARB	RE	BF
90	685	1251	3.5	41.7	5	5	2.96	15.02	0.32
101	98	101	-	-	-	-	119	100	139




Terry holds grandson, Cylan, beside long time friend Neil Nicholson, holding his grandson, Rhen.

SIRE LCDR FAVOR 149F **DAM** GW-WBF SUBSTANCE 820Y
LCDR DILIGENCE 215J **WS DORCAS D247**
 LCDR MS GIA 5G WS MISS DORCAS Y214

CE	BW	WW	YW	MCE	MILK	MWW
6.0	1.8	86.4	135.3	3.2	23.7	66.8
RANK 95	85	25	30	99	55	35

STAY	DOC	CW	YG	MARB	REA	\$API	\$TI
16.1	13.8	52.0	-0.15	0.34	0.99	126.1	82.8
RANK 40	35	20	65	60	10	65	50

- Our only Diligence son, but he's a good one
- Dam has a 105 WW index on her calves
- He sped up his gain after weaning and has the 3rd largest Adj. Scrotal in the sale

18 WS 99N 

Homozygous Black **Homozygous Polled** **PB SM**
ASA #4535943 **99N** **BD: 3/13/2025**

Act. BW	Adj. WW	Adj. YW	ADG	SC	CLAW	ANGLE	MARB	RE	BF
88	662	1268	3.8	34.1	6	6	2.71	15.95	0.27
ET	ET	ET	-	-	-	-	112	101	117



WS 99N Sells as Lot 18.

SIRE WS PROCLAMATION E202 **DAM** TJ MAIN EVENT 503B
BCLR MANIFESTO G352 **WS EN VOGUE F50**
 ELLIOTT MISS 352 WS OPPORTUNITY D248

CE	BW	WW	YW	MCE	MILK	MWW
7.7	1.9	94.7	140.9	6.6	29.0	76.2
RANK 75	65	10	15	35	15	10

STAY	DOC	CW	YG	MARB	REA	\$API	\$TI
16.7	12.9	66.2	-0.33	0.48	1.46	153.4	97.4
RANK 40	40	1	65	15	1	25	10

I love the BCLR Manifesto cattle and I feel like this bull could put on a structure clinic. You can confidently buy this bull to add athleticism and maternal integrity to your herd. -Aaron



WS 56N Sells as Lot 19.

19	WS 56N								
	Homozygous Black ASA #4535857		Homozygous Polled 56N						
				PB SM BD: 2/19/2025					
Act. BW	Adj. WW	Adj. YW	ADG	SC	CLAW	ANGLE	MARB	RE	BF
87	713	1236	3.2	36.9	6	5	2.81	16.59	0.33
ET	ET	ET	-	-	-	-	100	100	100

SIRE TJ DIPLOMAT 294D
HOOK'S FULL FIGURES 11F
HOOK'S DOCILA 23D

DAM WS HOT BEEF X38
WS MISS REGAL Z148
WS SYLVIA W11

	CE	BW	WW	YW	MCE	MILK	MWW	
EPD	6.9	2.3	86.1	133.4	6.4	38.9	81.9	
RANK	80	75	30	25	40	1	2	
	STAY	DOC	CW	YG	MARB	REA	\$API	\$TI
EPD	18.6	14.7	33.9	-0.40	0.53	1.36	156.8	94.7
RANK	20	20	50	35	10	2	20	15

- This bull could be the sleeper of the day. Don't miss out!
- He is a full ET brother to the dams of Lots 1, 2, 3 & 4
- A homo black Full Figures son, which is hard to find
- Maternal is king here. Dam is 14 years old and still a beautifully uddered cow—due to calve again this spring. She has a 109 WW index on her calves and has produced 24 ET calves for us.



WS 32N Sells as Lot 21.

20	WS 98M		<i>age-advantaged</i>	
	Homozygous Black ASA #4363963		Homozygous Polled 98M	
				3/4 SM 1/4 AN BD: 3/4/2024
Act. BW	Adj. WW	Act. Wt. 1/6		
88	736	2080		
104				

SIRE LCDR IMPACT 134F
CDI HIT MAN 306H
CDI MS 701T 13Z

DAM BAR CK NO EQUAL 4118B
BAR CK MS 4118B 8269F
BAR CK MS 1006X 6260D

	CE	BW	WW	YW	MCE	MILK	MWW	
EPD	10.0	1.1	85.3	133.0	7.5	28.2	70.7	
RANK	70	75	30	30	45	20	20	
	STAY	DOC	CW	YG	MARB	REA	\$API	\$TI
EPD	16.6	16.0	49.8	-0.30	0.46	1.02	140.5	87.8
RANK	35	15	25	20	45	10	45	35

- He is HUGE and had a big weaning weight.
- Should be lots of growth in his calves with added frame.
- This bull will cover a lot of cows.

21	WS 32N								
	Heterozygous Black ASA #4536012		Homozygous Polled 32N						
				PB SM BD: 1/29/2025					
Act. BW	Adj. WW	Adj. YW	ADG	SC	CLAW	ANGLE	MARB	RE	BF
92	780	1375	3.7	40.3	6	6	2.60	16.35	0.25
107	111	112	-	-	-	-	78	105	109

SIRE TJ HEISMAN 388F
BRIDLE BIT HERSHEL H027
BRIDLE BIT MISS E7102

DAM HOOK'S FULL FIGURES 11F
WS KAROLYN K22
WS MS HAVANA H38

	CE	BW	WW	YW	MCE	MILK	MWW	
EPD	11.6	1.9	86.1	140.3	7.3	35.9	78.8	
RANK	35	65	30	15	25	2	4	
	STAY	DOC	CW	YG	MARB	REA	\$API	\$TI
EPD	17.7	13.3	48.8	-0.17	1.17	0.93	196.4	110.8
RANK	30	35	15	99	1	45	1	1

- Big time growth indexes with 111 and 112 of weaning and yearling
- Power and performance with great carcass
- Lots of maternal backing him with a great cow family with a proven record
- He's a very attractive bull and moves well

22	WS 180M		<i>age-advantaged</i>	
	Heterozygous Black ASA #4505281		Homozygous Polled 180M	
				PB SM BD: 8/6/2024
Act. BW	Adj. WW	Act. Wt. 1/6		
70	664	1470		
ET	ET	ET		

SIRE GIBBS 7382E BROAD RANGE
GIBBS 9114G ESSENTIAL
GIBBS 7153E STAR 3136A

DAM HOOKS SHEAR FORCE 38K
WS LITTLE SISTER W37
DCR MS RIBEYE N72

	CE	BW	WW	YW	MCE	MILK	MWW	
EPD	11.5	0.3	96.1	152.9	6.1	30.8	78.8	
RANK	35	35	10	5	45	10	4	
	STAY	DOC	CW	YG	MARB	REA	\$API	\$TI
EPD	8.8	14.7	42.4	-0.33	0.41	1.32	144.4	100.0
RANK	99	20	25	65	20	2	35	10

- Fall ET bull out of the Little Sister cow—the only sister to WS Beef Maker. She was here until she was 15 years old
- This bull has 11 EPDs in the top 20% of the breed
- Can be used on red or black cows

23 WS 36N DNA

Heterozygous Black ASA #4535962 Homozygous Polled 36N PB SM
BD: 1/31/2025

Act. BW	Adj. WW	Adj. YW	ADG	SC	CLAW	ANGLE	MARB	RE	BF
76 89	695 98	1211 N/C	3.2 -	35.4 -	6 -	6 -	2.70 100	14.59 100	0.18 100

SIRE HOOK'S EMPIRE 61E
WS JAM-PACKED 88J
WS ETIQUETTE E131

DAM KBHR QUIGLEY C154
WS JEMIMAH J119
WS VACA BONITA B187

	CE	BW	WW	YW	MCE	MILK	MWW
EPD	13.2	-1.7	75.9	115.1	7.0	27.3	65.1
RANK	20	10	65	60	30	25	45

	STAY	DOC	CW	YG	MARB	REA	\$API	\$TI
EPD	19.5	12.5	42.0	-0.45	0.71	1.19	179.1	97.6
RANK	15	45	25	20	3	10	4	10

- This bull has a great API and leans more toward calving ease
- Comes from a great cow family
- His full sister, WS Lady Liberty, was featured in the 2025 North Dakota State Sale

24 WS 34N DNA

Heterozygous Black ASA #4535999 Homozygous Polled 34N PB SM
BD: 1/30/2025

Act. BW	Adj. WW	Adj. YW	ADG	SC	CLAW	ANGLE	MARB	RE	BF
77 94	732 102	1275 100	3.4 -	38.9 -	6 -	5 -	2.71 92	14.67 101	0.24 100

SIRE IR IMPERIAL D948
RRS-MR MOAB J239
LCDR MS EMBER 724E

DAM WS FIREWALL 90F
WS LENA L95
K M J MS SFORCE E300

	CE	BW	WW	YW	MCE	MILK	MWW
EPD	9.7	-0.2	90.9	134.0	7.2	26.9	72.4
RANK	55	25	20	25	25	25	15

	STAY	DOC	CW	YG	MARB	REA	\$API	\$TI
EPD	16.5	10.8	42.8	-0.29	0.90	1.05	180.6	108.0
RANK	40	65	25	80	1	20	3	2

- Small birth weight, but grew well out of first calf heifer—in fact, he was about as big as his dam by weaning.
- Good maternal traits.
- Great carcass traits.

25 WS 182M age-advantaged DNA

Heterozygous Black ASA #4505273 Homozygous Polled 182M 3/4 SM 1/4 AN
BD: 8/30/2024

Act. BW	Adj. WW	Act. Wt. 1/6
94 ET	659 ET	1555 ET

SIRE WS PROCLAMATION E202
LBRS GENESIS G69
LBR DIANA D69

DAM G A R SELECTIVE
BAR CK MS 6225 911Z
BAR CK MS 925S

	CE	BW	WW	YW	MCE	MILK	MWW
EPD	5.8	2.3	101.4	157.3	5.5	23.6	74.4
RANK	95	90	3	5	75	55	10

	STAY	DOC	CW	YG	MARB	REA	\$API	\$TI
EPD	13.1	17.3	69.4	-0.21	0.87	1.06	154.6	104.9
RANK	70	10	2	45	5	10	25	3

- One of the best 911Z sons we have sold to date, with big time growth and good carcass traits that should add a lot of value to your calves.



BAR CK MS 6225 911Z Dam of Lots 25-31.

26 WS 74N DNA

Homozygous Black ASA #4535971 Homozygous Polled 74N 3/4 SM 1/4 AN
BD: 2/27/2025

Act. BW	Adj. WW	Adj. YW	ADG	SC	CLAW	ANGLE	MARB	RE	BF
91 ET	676 ET	1215 ET	3.4 -	36.4 -	5 -	6 -	4.14 120	12.42 99	0.24 126

SIRE WS PROCLAMATION E202
LBRS GENESIS G69
LBR DIANA D69

DAM G A R SELECTIVE
BAR CK MS 6225 911Z
BAR CK MS 925S

	CE	BW	WW	YW	MCE	MILK	MWW
EPD	10.9	-0.3	92.0	142.3	7.6	23.5	69.5
RANK	60	50	15	20	40	55	25

	STAY	DOC	CW	YG	MARB	REA	\$API	\$TI
EPD	17.3	9.9	60.7	-0.04	0.95	0.64	173.6	104.2
RANK	30	85	10	90	3	60	10	3

- A nice Genesis son with solid growth EPDs and good carcass

27 WS 79N DNA

Heterozygous Black ASA #4535799 Homozygous Polled 79N 3/4 SM 1/4 AN
BD: 3/1/2025

Act. BW	Adj. WW	Adj. YW	ADG	SC	CLAW	ANGLE	MARB	RE	BF
94 ET	738 ET	1275 ET	3.3 -	39.5 -	6 -	5 -	3.11 99	13.75 97	0.27 104

SIRE WS PROCLAMATION E202
LBRS GENESIS G69
LBR DIANA D69

DAM G A R SELECTIVE
BAR CK MS 6225 911Z
BAR CK MS 925S

	CE	BW	WW	YW	MCE	MILK	MWW
EPD	10.0	-1.2	90.5	138.3	5.5	23.5	68.8
RANK	70	35	15	25	75	55	25

	STAY	DOC	CW	YG	MARB	REA	\$API	\$TI
EPD	18.0	13.9	49.3	-0.06	0.84	0.62	168.6	101.5
RANK	25	35	25	85	10	65	10	5

- This bull performed well.
- Added frame size.

BREEDING FOR THE FUTURE BULLS

28

WS 68N

Heterozygous Black
ASA #4535885

Homozygous Polled
68N

3/4 SM 1/4 AN
BD: 2/25/2025



Act. BW	Adj. WW	Adj. YW	ADG	SC	CLAW	ANGLE	MARB	RE	BF
90	748	1297	3.4	39.3	5	6	2.95	13.29	0.30
ET	ET	ET	-	-	-	-	102	97	120

SIRE WS BEEF MAKER R13
WS HOT BEEF X38
WS MISS FREEWAY R106

DAM G A R SELECTIVE
BAR CK MS 6225 911Z
BAR CK MS 925S

CE	BW	WW	YW	MCE	MILK	MWW	
11.4	-0.5	80.4	124.5	7.0	29.4	69.6	
RANK 55	45	45	45	55	15	25	
STAY	DOC	CW	YG	MARB	REA	\$API	\$TI
16.0	14.9	41.8	-0.11	0.76	0.53	156.9	93.6
RANK 45	25	40	75	10	80	20	20

- Hot Beef son with great weaning and yearling weights
- Good maternal and solid marbling



WS 81N Sells as Lot 29.



WS 86N Sells as Lot 30.

29

WS 81N

Red
ASA #4535904

Homozygous Polled
81N

3/4 SM 1/4 AN
BD: 3/1/2025



Act. BW	Adj. WW	Adj. YW	ADG	SC	CLAW	ANGLE	MARB	RE	BF
105	742	1318	3.6	35.0	5	5	3.83	16.15	0.21
ET	ET	ET	-	-	-	-	130	114	117

SIRE WS BEEF MAKER R13
WS HOT BEEF X38
WS MISS FREEWAY R106

DAM G A R SELECTIVE
BAR CK MS 6225 911Z
BAR CK MS 925S

CE	BW	WW	YW	MCE	MILK	MWW	
11.5	0.9	83.8	123.1	5.4	29.4	71.4	
RANK 50	70	35	50	80	15	20	
STAY	DOC	CW	YG	MARB	REA	\$API	\$TI
15.3	13.1	31.4	-0.29	0.92	0.81	163.3	98.4
RANK 50	45	70	25	4	30	15	10

- Very attractive Hot Beef calf that grew very well
- He has good maternal and did very well on carcass ultrasound
- One of the best Hot Beef bulls we've raised

30

WS 86N

Red
ASA #4535964

Homozygous Polled
86N

3/4 SM 1/4 AN
BD: 3/3/2025



Act. BW	Adj. WW	Adj. YW	ADG	SC	CLAW	ANGLE	MARB	RE	BF
95	720	1240	3.2	35.6	5	6	3.72	15.09	0.27
ET	ET	ET	-	-	-	-	119	106	104

SIRE WS BEEF MAKER R13
WS HOT BEEF X38
WS MISS FREEWAY R106

DAM G A R SELECTIVE
BAR CK MS 6225 911Z
BAR CK MS 925S

CE	BW	WW	YW	MCE	MILK	MWW	
12.6	-0.2	75.3	111.6	7.7	29.4	67.1	
RANK 40	50	60	70	40	15	35	
STAY	DOC	CW	YG	MARB	REA	\$API	\$TI
18.1	16.0	30.9	-0.26	0.73	0.89	158.7	90.0
RANK 20	15	75	30	15	20	20	30

- This very attractive calf slants more toward calving ease.
- He grew well and did great on his carcass ultrasound.
- He is well put together and has good maternal also.

31

WS 80N

Red
ASA #4535862

Homozygous Polled
80N

3/4 SM 1/4 AN
BD: 3/1/2025



Act. BW	Adj. WW	Adj. YW	ADG	SC	CLAW	ANGLE	MARB	RE	BF
87	732	1301	3.5	36.0	6	5	2.57	13.75	0.25
ET	ET	ET	-	-	-	-	82	97	96

SIRE WS BEEF MAKER R13
WS HOT BEEF X38
WS MISS FREEWAY R106

DAM G A R SELECTIVE
BAR CK MS 6225 911Z
BAR CK MS 925S

CE	BW	WW	YW	MCE	MILK	MWW	
15.3	-2.8	80.3	120.4	10.2	29.4	69.6	
RANK 20	15	45	55	10	15	25	
STAY	DOC	CW	YG	MARB	REA	\$API	\$TI
14.6	12.2	34.6	-0.25	0.84	0.77	168.1	99.3
RANK 60	60	60	35	10	40	10	10

- This bull is a calving ease prospect who grew very well.
- Great maternal and carcass.



FOR REFERENCE **BCLR FORGE J8871**

ASA #3993773

	CE	BW	WW	YW	MCE	MILK	MWW	STAY	DOC	CW	YG	MARB	REA	\$API	\$TI
EPD	2.1	3.2	96.3	149.7	1.8	23.9	72.0	20.7	14.4	38.4	-0.28	0.99	0.89	168.1	103.1
RANK	99	95	10	10	99	50	15	5	30	50	25	3	20	10	4

32 **WS 55N**



Red Homozygous Polled 3/4 SM 1/4 AN
 ASA #4535969 55N BD: 2/19/2025

Act. BW	Adj. WW	Adj. YW	ADG	SC	CLAW	ANGLE	MARB	RE	BF
85	760	1195	2.7	38.4	6	6	2.31	14.49	0.22
100	108	96	-	-	-	-	93	96	96

SIRE GW PREDESTINED 701T DAM CLRS GUARDIAN 317G
BCLR FORGE J8871 WS KATRINA K81
 KS ZADA Z887 BAR CK MS 6225 911Z

	CE	BW	WW	YW	MCE	MILK	MWW
EPD	12.5	-1.2	86.3	128.6	5.9	22.8	66.0
RANK	45	35	25	40	70	65	40

	STAY	DOC	CW	YG	MARB	REA	\$API	\$TI
EPD	17.9	8.8	15.8	-0.33	0.73	0.84	164.5	97.5
RANK	25	90	99	15	15	30	15	10

- A calving ease Forge son, pushing a 13 in CE and a -1 in BW.
- Nice growth with good carcass traits
- A very attractive young bull



WS 55N Sells as Lot 32.

33 **WS 117N**



Red Homozygous Polled PB SM
 ASA #4535975 117N BD: 3/24/2025

Act. BW	Adj. WW	Adj. YW	ADG	SC	CLAW	ANGLE	MARB	RE	BF
101	800	1286	3.0	36.2	6	5	3.37	14.52	0.25
ET	ET	ET	-	-	-	-	116	106	100

SIRE GW PREDESTINED 701T DAM HOOK'S FULL FIGURES 11F
BCLR FORGE J8871 WS MISS KANDI K20
 KS ZADA Z887 WS HAIZLEY H88

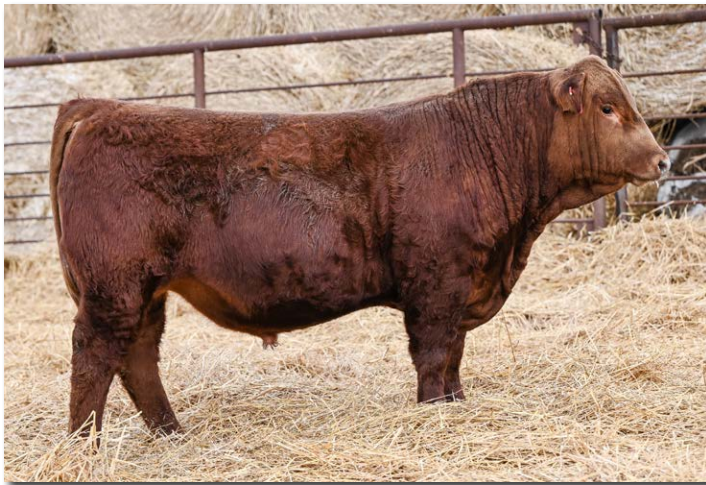
	CE	BW	WW	YW	MCE	MILK	MWW
EPD	10.9	1.1	89.3	133.1	5.8	28.6	73.1
RANK	40	50	20	25	50	20	15

	STAY	DOC	CW	YG	MARB	REA	\$API	\$TI
EPD	18.9	14.2	35.8	-0.18	0.97	0.76	187.7	107.2
RANK	20	25	40	99	1	80	2	2

- An ET Forge son who really grew, especially since his recip dam was lame a good part of the summer
- His donor dam was our high selling open heifer in 2023—but retained this flush. We have 4 full sisters
- Dam was one of the highest marbling heifers ever raised here and this bull and his sisters are following suit.
- Growth, maternal and carcass traits all tied together



WS 117N Sells as Lot 33.



WS 35N Sells as Lot 34.

34

WS 35N



Red Homozygous Polled
ASA #4536009 35N

PB SM
BD: 1/30/2025

Act. BW	Adj. WW	Adj. YW	ADG	SC	CLAW	ANGLE	MARB	RE	BF
85	807	1458	4.1	39.4	7	7	2.93	17.27	0.23
99	113	114	-	-	-	-	99	119	96

SIRE GW PREDESTINED 701T DAM HOOK'S EMPIRE 61E
BCLR FORGE J8871 WS JOYFUL J127
KS ZADA Z887 WS GLAMOUR QUEEN Z140

CE	BW	WW	YW	MCE	MILK	MWW
8.1	0.6	93.4	150.4	5.7	30.4	77.0
RANK 70	40	15	10	50	15	5

STAY	DOC	CW	YG	MARB	REA	\$API	\$TI
18.8	15.2	40.5	-0.39	0.68	1.12	173.7	104.5
RANK 20	15	30	40	4	15	10	3

- He is a big time power pull with huge indexes
- Raising big calves is in the cow family-his grandam was known for having some of our biggest calves year after year.
- There's a lot of maternal built into this bull's pedigree.



35

WS 37N



Red Homozygous Polled
ASA #4535988 37N

PB SM
BD: 1/31/2025

Act. BW	Adj. WW	Adj. YW	ADG	SC	CLAW	ANGLE	MARB	RE	BF
90	690	1282	3.7	35.4	6	6	3.46	14.99	0.25
106	97	100	-	-	-	-	117	103	104

SIRE GW PREDESTINED 701T DAM HOOK'S EMPIRE 61E
BCLR FORGE J8871 WS JINGER J141
KS ZADA Z887 WS TAKE A BOW B211

CE	BW	WW	YW	MCE	MILK	MWW
6.5	2.1	88.9	137.7	3.3	25.7	70.0
RANK 85	70	20	20	90	35	25

STAY	DOC	CW	YG	MARB	REA	\$API	\$TI
15.3	12.9	35.1	-0.28	0.65	0.89	156.5	97.4
RANK 55	40	45	80	5	50	20	10

- A Forge son with good carcass
- Well-backed maternal pedigree



WS 42N Sells as Lot 36.

36

WS 42N



Red Homozygous Polled
ASA #4535921 42N

PB SM
BD: 2/4/2025

Act. BW	Adj. WW	Adj. YW	ADG	SC	CLAW	ANGLE	MARB	RE	BF
101	796	1304	3.2	39.1	6	5	2.76	16.45	0.22
114	113	106	-	-	-	-	83	106	96

SIRE GW PREDESTINED 701T DAM IR IMPERIAL D948
BCLR FORGE J8871 WS GIANNA G28
KS ZADA Z887 WS MISS DEMI D178

CE	BW	WW	YW	MCE	MILK	MWW
3.9	2.6	91.0	141.6	2.0	25.8	71.2
RANK 95	80	20	15	99	35	20

STAY	DOC	CW	YG	MARB	REA	\$API	\$TI
20.1	14.8	33.1	-0.40	0.64	1.05	163.1	97.9
RANK 10	20	50	35	5	20	15	10

- Another great performing Forge son
- Should make beautiful females and scale pounding steers
- Ideal prospect for some red Angus cross cows
- Dam is a cherry red Imperial daughter with a 105 WW index on 4 calves
- Cow family has produced female after female with beautiful udders

37 WS 43N

Red ASA #4535947 Homozygous Polled PB SM
BD: 2/5/2025



WS 43N Sells as Lot 37.



Act. BW	Adj. WW	Adj. YW	ADG	SC	CLAW	ANGLE	MARB	RE	BF
95	727	1271	3.4	38.2	6	5	3.01	15.27	0.23
111	105	108	-	-	-	-	110	104	121

SIRE GW PREDESTINED 701T
BCLR FORGE J8871
KS ZADA Z887

DAM 9 MILE ABUNDANCE 7507
WS KARINA K33
WS GENTEEL G47

CE	BW	WW	YW	MCE	MILK	MWW
3.3	5.1	107.6	162.8	1.3	26.0	79.7
RANK 99	RANK 99	RANK 1	RANK 2	RANK 99	RANK 30	RANK 3

STAY	DOC	CW	YG	MARB	REA	\$API	\$TI
18.4	12.5	47.7	-0.31	0.80	1.00	168.9	108.4
RANK 25	RANK 45	RANK 15	RANK 75	RANK 2	RANK 30	RANK 10	RANK 1

- This guy has been a personal favorite all year
- Check out his growth numbers
- He's very attractive, has great structural integrity, good feet, and moves well
- Very heavy muscled
- I'd like to get some semen on this bull to use in our herd.

38 WS 52N

Red ASA #4535855 Homozygous Polled PB SM
BD: 2/15/2025

Act. BW	Adj. WW	Adj. YW	ADG	SC	CLAW	ANGLE	MARB	RE	BF
96	755	1194	2.7	35.2	6	5	2.62	14.63	0.14
110	109	101	-	-	-	-	96	100	74

SIRE GW PREDESTINED 701T
BCLR FORGE J8871
KS ZADA Z887

DAM 9 MILE ABUNDANCE 7507
WS JULISA J87
WS MISS LIFELINE X172

CE	BW	WW	YW	MCE	MILK	MWW
3.8	1.9	91.5	137.8	4.2	26.8	72.5
RANK 95	RANK 65	RANK 15	RANK 20	RANK 80	RANK 25	RANK 15

STAY	DOC	CW	YG	MARB	REA	\$API	\$TI
20.3	11.0	31.0	-0.46	0.69	0.97	166.7	100.3
RANK 10	RANK 60	RANK 60	RANK 15	RANK 4	RANK 35	RANK 10	RANK 10

- Another very solid maternal bull
- Backed by a quality cow family
- Good performance with that good Forge carcass

39 WS 107N

Red ASA #4535839 Homozygous Polled PB SM
BD: 3/19/2025

Act. BW	Adj. WW	Adj. YW	ADG	SC	CLAW	ANGLE	MARB	RE	BF
97	775	1344	3.5	40.0	5	5	2.57	14.84	0.23
114	108	105	-	-	-	-	87	102	96

SIRE GW PREDESTINED 701T
BCLR FORGE J8871
KS ZADA Z887

DAM LCDR FIREPROOF 206H
WS ORBIT K90
WS KILLING TIME E38

CE	BW	WW	YW	MCE	MILK	MWW
5.0	2.7	91.1	139.5	0.2	23.9	69.4
RANK 95	RANK 80	RANK 20	RANK 20	RANK 99	RANK 45	RANK 25

STAY	DOC	CW	YG	MARB	REA	\$API	\$TI
16.9	12.5	44.5	-0.29	0.60	0.89	154.7	96.3
RANK 40	RANK 45	RANK 20	RANK 80	RANK 10	RANK 50	RANK 25	RANK 15

He keeps getting better and better. He's very dark red, very long, very athletic and very good. He comes from the same cow family as WS 38 Special, so maternal will be strong with two perfectly uddered cows behind him. -Aaron

40 WS 115N

Red ASA #4535941 Homozygous Polled PB SM
BD: 3/22/2025

Act. BW	Adj. WW	Adj. YW	ADG	SC	CLAW	ANGLE	MARB	RE	BF
87	710	1277	3.5	42.1	5	5	2.84	16.49	0.23
98	99	96	-	-	-	-	98	109	85

SIRE GW PREDESTINED 701T
BCLR FORGE J8871
KS ZADA Z887

DAM WS PRIME TIME B6
WS DOWN HOME E69
WS ZARZAPARILLA Z187

CE	BW	WW	YW	MCE	MILK	MWW
8.7	-0.4	82.6	121.8	6.6	28.6	69.8
RANK 65	RANK 25	RANK 40	RANK 45	RANK 35	RANK 20	RANK 25

STAY	DOC	CW	YG	MARB	REA	\$API	\$TI
21.0	11.8	31.2	-0.36	0.65	1.07	172.3	97.4
RANK 10	RANK 50	RANK 60	RANK 55	RANK 5	RANK 20	RANK 10	RANK 10

Here is a larger framed bull who in the right herd I believe could work on heifers. Born to the grandam of WS Tomkat, WS Down Home is the biggest framed and most powerful branch in the WS Zarzaparilla family tree. Inserting Forge into this bloodline could change the standard of maternal in all the right ways. -Aaron



BREEDING FOR THE FUTURE BULLS



WS JULIETTE J69 Dam of Lot 41.

41	WS 26N		<i>age-advantaged</i>						
	Red ASA #4535856	Homozygous Polled 26N						PB SM BD: 1/27/2025	
Act. BW	Adj. WW	Adj. YW	ADG	SC	CLAW	ANGLE	MARB	RE	BF
111	863	1502	4.0	39.7	5	5	2.86	15.42	0.29
127	122	122	-	-	-	-	86	99	126

SIRE	GW PREDESTINED 701T				DAM	WS FULL TILT 51F			
BCLR FORGE J8871	KS ZADA Z887				WS JULIETTE J69	WS MISS FERRARI F119			
	CE	BW	WW	YW	MCE	MILK	MWW		
EPD	2.4	5.7	110.3	164.2	1.4	31.1	86.1		
RANK	99	99	1	2	99	10	1		
	STAY	DOC	CW	YG	MARB	REA	\$API	\$TI	
EPD	16.0	15.1	55.4	-0.26	0.61	0.86	151.6	104.3	
RANK	45	15	5	85	10	60	25	3	

- Powerhouse bull who is #1 for weaning and yearling weights overall
- Born unassisted out of a beautiful young cow who lost her calf last year and was dry
- Dam has 117 WW index on 2 calves
- We recommend use on mature cows

42	WS 61M		<i>age-advantaged</i>				
	Red ASA #4364014	Homozygous Polled 61M					PB SM BD: 2/15/2024
Act. BW	Adj. WW	Act. Wt. 1/6	MARB	RE	BF		
87	621	1945	2.76	11.31	0.18		
108	100	N/C	102	89	86		

SIRE	GW PREDESTINED 701T				DAM	HOOK'S FULL FIGURES 11F			
BCLR FORGE J8871	KS ZADA Z887				WS JOLIE J20	WS GRACE G121			
	CE	BW	WW	YW	MCE	MILK	MWW		
EPD	7.6	1.1	83.1	127.2	6.2	30.0	71.4		
RANK	75	50	40	35	45	15	20		
	STAY	DOC	CW	YG	MARB	REA	\$API	\$TI	
EPD	21.5	16.0	31.0	-0.30	0.61	0.83	167.4	94.7	
RANK	4	10	60	75	10	65	10	15	

- A virgin 2 year old out of Forge and the J20 cow
- Dam comes from the A52 cow family and raised our highest weaning heifer this year
- He weighed almost a ton on 1-06-26

43	WS 95M		<i>age-advantaged</i>				
	Red ASA #4363939	Homozygous Polled 95M					PB SM BD: 3/3/2024
Act. BW	Adj. WW	Act. Wt. 1/6	MARB	RE	BF		
81	695	1644	2.24	13.59	0.19		
98	N/C	N/C	100	100	100		

SIRE	GW PREDESTINED 701T				DAM	KRJ HZN DIRECT IMPACT F805			
BCLR FORGE J8871	KS ZADA Z887				WS HARPER H98	WS CASHMERE C29			
	CE	BW	WW	YW	MCE	MILK	MWW		
EPD	11.2	0.6	85.1	128.8	6.0	23.4	65.9		
RANK	40	40	30	35	45	50	40		
	STAY	DOC	CW	YG	MARB	REA	\$API	\$TI	
EPD	21.4	11.1	33.6	-0.37	0.63	1.16	175.1	97.4	
RANK	4	60	50	50	10	10	5	10	

- A virgin 2 year old who was orphaned at 2 ½ months of age
- Dam was flushed just before she died, so you know she was special
- This red cow family is sprinkled in the pedigree of other bulls in this sale

44	WS 188M		<i>age-advantaged</i>				
	Red ASA #4505284	Homozygous Polled 188M	3/4 SM 1/4 AN BD: 9/22/2024				PB SM BD: 9/22/2024
Act. BW	Adj. WW	Act. Wt. 1/6					
88	672	1405					
96	104	N/C					

SIRE	GW PREDESTINED 701T				DAM	GW CARRY ON Z0219			
BCLR FORGE J8871	KS ZADA Z887				WS MISS CARLY C66	WS LITTLE SISTER W37			
	CE	BW	WW	YW	MCE	MILK	MWW		
EPD	9.6	-0.6	77.8	115.7	5.6	29.2	67.9		
RANK	70	45	55	65	75	15	30		
	STAY	DOC	CW	YG	MARB	REA	\$API	\$TI	
EPD	18.2	14.2	36.1	-0.46	0.51	1.20	145.8	87.0	
RANK	20	30	60	1	35	2	35	40	

- A low BW, above average WW fall born bull
- Red outcross genetics here

45	WS 189M		<i>age-advantaged</i>				
	Red ASA #4505280	Homozygous Polled 189M					PB SM BD: 9/22/2024
Act. BW	Adj. WW	Act. Wt. 1/6					
88	756	1535					
96	117	N/C					

SIRE	GW PREDESTINED 701T				DAM	CDI AMBITION 255C			
BCLR FORGE J8871	KS ZADA Z887				WS FOOTLOOSE F69	WS MAJESTIC Z133			
	CE	BW	WW	YW	MCE	MILK	MWW		
EPD	6.0	3.0	107.4	166.1	3.1	26.0	79.7		
RANK	90	85	1	2	90	30	3		
	STAY	DOC	CW	YG	MARB	REA	\$API	\$TI	
EPD	22.9	13.8	41.1	-0.28	0.58	0.88	173.1	105.8	
RANK	2	30	30	80	10	55	10	2	

- The fall born standout with low birth and a 117 WW index
- He should sire a great set of calves
- Dam is maternal sister to the E65 donor and WS Prime Time



FOR REFERENCE **WS TOMKAT 54K**

ASA #4070902

	CE	BW	WW	YW	MCE	MILK	MWW	STAY	DOC	CW	YG	MARB	REA	\$API	\$TI
EPD	3.5	4.1	83.2	121.1	5.7	27.8	69.3	14.1	10.8	34.3	-0.49	0.70	1.13	146.7	92.8
RANK	95	95	40	45	50	20	25	65	65	45	10	3	15	30	20

46 WS 41N



Red Homozygous Polled PB SM
ASA #4535994 41N BD: 2/4/2025

Act. BW	Adj. WW	Adj. YW	ADG	SC	CLAW	ANGLE	MARB	RE	BF
88	716	1289	3.6	38.6	6	5	2.82	14.55	0.20
103	100	101	-	-	-	-	96	100	83

SIRE 9 MILE ABUNDANCE 7507 DAM HOOK'S EAGLE 6E
WS TOMKAT 54K WS EAGLES NEST K3
WS OBSESSION G7 WS DEAD RED A56

	CE	BW	WW	YW	MCE	MILK	MWW
EPD	9.6	0.1	83.7	123.0	7.8	26.1	67.8
RANK	55	30	35	45	20	30	30

	STAY	DOC	CW	YG	MARB	REA	\$API	\$TI
EPD	17.3	13.8	31.4	-0.45	0.46	1.07	155.7	93.2
RANK	35	30	55	20	15	20	20	20

The WS Dead Red daughters are making an impact on my herd and this bull's dam is no exception. It is fun to cross black on red and make outcross cattle like this bull who will be as uniquely bred a red as you may run across this sale season. He is bred from a line of great personalities, long bodies and perfect teat size on cows who milk their hearts out. -Aaron



WS 41N Sells as Lot 46.

47 WS 48N



Red Homozygous Polled PB SM
ASA #4535861 48N BD: 2/10/2025

Act. BW	Adj. WW	Adj. YW	ADG	SC	CLAW	ANGLE	MARB	RE	BF
88	793	1437	4.0	34.0	6	6	3.81	13.25	0.27
101	111	113	-	-	-	-	129	91	113

SIRE 9 MILE ABUNDANCE 7507 DAM HOOK'S FULL FIGURES 11F
WS TOMKAT 54K WS FULL TIME J53
WS OBSESSION G7 WS KILLING TIME E38

	CE	BW	WW	YW	MCE	MILK	MWW
EPD	9.4	2.1	89.1	136.7	8.3	33.2	77.7
RANK	55	70	20	20	15	5	5

	STAY	DOC	CW	YG	MARB	REA	\$API	\$TI
EPD	17.8	12.0	53.2	-0.29	0.60	1.01	162.3	97.5
RANK	30	50	10	80	10	30	15	10



WS 48N Sells as Lot 47.



WS 111N Sells as Lot 48.

48	WS 111N		Homozygous Polled							PB SM	
	Red ASA #4535825		111N							BD: 3/21/2025	
Act. BW	Adj. WW	Adj. YW	ADG	SC	CLAW	ANGLE	MARB	RE	BF		
89	690	1291	3.7	37.6	6	6	2.73	15.08	0.26		
101	97	101	-	-	-	-	93	104	108		

SIRE 9 MILE ABUNDANCE 7507
WS TOMKAT 54K
WS OBSESSION G7

DAM CDI AMBITION 255C
WS TARGET ACQUIRED H59
WS DEAD RED A56

	CE	BW	WW	YW	MCE	MILK	MWW	
EPD	10.1	0.9	80.6	118.2	6.6	26.7	66.9	
RANK	50	45	50	55	35	30	35	
	STAY	DOC	CW	YG	MARB	REA	\$API	\$TI
EPD	15.4	14.1	32.5	-0.41	0.70	1.04	162.6	96.1
RANK	55	25	55	35	4	25	15	15

Cherry red, smooth made, gentle son of Tomkat out of a perfect uddered Dead Red daughter. His dam promotes lighter BWs in her calves. I wonder if with the way he is built if he may work on some heifers...take a look and tell me what you think. -Aaron



WS 3N Sells as Lot 49.

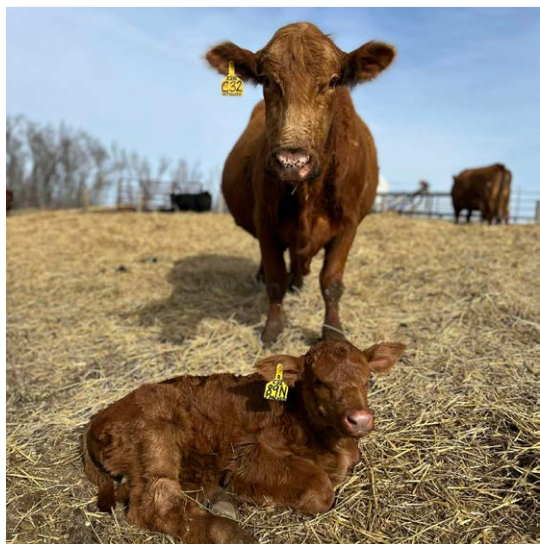
49	WS 3N		Homozygous Polled							PB SM	
	Red ASA #4535852		3N							BD: 1/5/2025	
Act. BW	Adj. WW	Adj. YW	ADG	SC	CLAW	ANGLE	MARB	RE	BF		
101	781	1387	3.8	37.0	6	5	2.79	16.17	0.21		
116	111	113	-	-	-	-	84	104	91		

SIRE HOOK'S EMPIRE 61E
WS JAM-PACKED 88J
WS ETIQUETTE E131

DAM CDI DOWNTOWN 400D
WS JESSA J31
WS ANISE A71

	CE	BW	WW	YW	MCE	MILK	MWW	
EPD	5.7	5.7	107.9	176.5	3.5	24.6	78.5	
RANK	90	99	1	1	90	40	4	
	STAY	DOC	CW	YG	MARB	REA	\$API	\$TI
EPD	17.9	12.9	53.3	-0.43	0.53	1.16	158.3	102.8
RANK	30	40	10	25	10	10	20	4

- High powered bull here with a great pedigree behind him
- His dam is a sister to the great WS Miss Sugar.
- Well made with a big quarter and long side.



Lot 50 as a calf with dam, WS Miss Profit C32.

50	WS 89N		Homozygous Polled							PB SM	
	Red ASA #4535878		89N							BD: 3/5/2025	
Act. BW	Adj. WW	Adj. YW	ADG	SC	CLAW	ANGLE	MARB	RE	BF		
97	727	1327	3.7	38.2	5	6	3.06	15.12	0.21		
110	103	108	-	-	-	-	92	97	91		

SIRE HOOK'S EMPIRE 61E
WS JAM-PACKED 88J
WS ETIQUETTE E131

DAM KBHR ULTIMATE A089
WS MISS PROFIT C32
WS MISS SUPERIOR Z210

	CE	BW	WW	YW	MCE	MILK	MWW	
EPD	3.4	3.4	90.9	149.5	2.6	25.7	71.0	
RANK	99	90	20	10	95	35	20	
	STAY	DOC	CW	YG	MARB	REA	\$API	\$TI
EPD	15.7	14.4	48.9	-0.49	0.30	1.31	135.7	89.4
RANK	50	20	15	10	35	3	45	30

- This bull should be a lot of people's favorite on sale day
- Great performance numbers
- Dam has put several bulls in the sale in past years

51 WS 9N



Red Homozygous Polled PB SM
 ASA #4535819 9N BD: 1/10/2025

Act. BW	Adj. WW	Adj. YW	ADG	SC	CLAW	ANGLE	MARB	RE	BF
70	732	1288	3.5	38.8	6	6	2.76	13.55	0.28
86	104	106	-	-	-	-	100	94	127

SIRE BRIDLE BIT RED ROCK G9124 DAM ROCKIN H CAPTIVATE J75
WS LANDMARK 14L WS LOOK UP L59
 WS STRAWBERRY WINE J89 WS ELITE E65

CE	BW	WW	YW	MCE	MILK	MWW	
17.6	-3.6	89.4	145.5	11.2	32.3	76.9	
RANK 3	2	20	10	1	10	10	
STAY	DOC	CW	YG	MARB	REA	\$API	\$TI
17.1	15.4	51.3	-0.20	0.73	0.83	190.2	108.9
RANK 35	15	10	95	3	65	2	1

- What a set of EPDs! 14 in the top 20% of the breed
- His sire WS Landmark, is a sure fire heifer bull, that works great on powerful heifers—he was our high selling red bull in 2024
- Impressive spread from birth to weaning and yearling



WS 9N Sells as Lot 51.

52 WS 13N



Red Homozygous Polled PB SM
 ASA #4535896 13N BD: 1/17/2025

Act. BW	Adj. WW	Adj. YW	ADG	SC	CLAW	ANGLE	MARB	RE	BF
75	769	1231	2.9	37.2	6	6	5.68	15.26	0.21
92	109	100	-	-	-	-	170	98	91

SIRE BRIDLE BIT RED ROCK G9124 DAM BRIDLE BIT HERSCHEL H027
WS LANDMARK 14L WS LEVELED UP L13
 WS STRAWBERRY WINE J89 WS JAZZI J51

CE	BW	WW	YW	MCE	MILK	MWW	
17.7	-1.9	84.7	134.6	10.0	32.7	74.9	
RANK 3	10	35	25	3	10	10	
STAY	DOC	CW	YG	MARB	REA	\$API	\$TI
15.6	12.0	31.8	-0.20	1.28	0.61	212.3	117.7
RANK 50	50	55	95	1	95	1	1

- Potential calving ease Herd Sire
- Outcross red pedigree
- One of our favorite bulls all summer
- Another Landmark son with tremendous CE, maternal and carcass EPDs
- Dam is a powerful, red Herschel daughter that is picture perfect. She will be in the donor pen this spring.
- Granddam's bull calf is Lot 53
- Maternal is rock solid



WS 13N Sells as Lot 52.

53 WS 45N



Red Homozygous Polled PB SM
 ASA #4535829 45N BD: 2/8/2025

Act. BW	Adj. WW	Adj. YW	ADG	SC	CLAW	ANGLE	MARB	RE	BF
97	798	1395	3.7	33.3	6	7	2.63	16.72	0.22
111	113	114	-	-	-	-	96	116	100

SIRE IR IMPERIAL D948 DAM CDI ABUNDANCE 391C
BAR CK ADMIRAL 0053H WS JAZZI J51
 BAR CK MS 4856B 6112D WS BEULAH B253

CE	BW	WW	YW	MCE	MILK	MWW	
13.6	0.7	89.0	140.3	8.4	32.1	76.5	
RANK 20	40	20	15	15	10	10	
STAY	DOC	CW	YG	MARB	REA	\$API	\$TI
11.2	12.5	30.1	-0.44	0.73	1.14	166.1	104.0
RANK 85	45	60	20	3	10	15	3

- A top performing Admiral son with huge growth indexes
- Tremendous producing dam with a 114 WW index on 3 calves
- 12 EPDs in the top 25% of the breed



WS 45N Sells as Lot 53.



Teaching moment with Daddy/Uncle Jordan after he pulled a calf.

54

age-advantaged 

Act. BW | Adj. WW | Act. Wt. 1/6 | MARB | RE | BF

OUT OF SALE

	CE	BW	WW	YW	MCE	MILK	MWW	
EPD								
RANK								
	STAY	DOC	CW	YG	MARB	REA	\$API	\$TI
EPD								
RANK								

DVAuction

Broadcasting Real-Time Auctions

WATCH AND BID ONLINE FOR FREE

Visit www.DVAuction.com and Register. It's as easy as 1, 2, 3...

1. Create an account at www.DVAuction.com under the "create new account" tab.
2. Apply for bidding by clicking "apply for bidding" in the upper left corner of your screen, at least 24 hours prior to the auction.
3. Tune into the sale and make your purchases.

www.DVAuction.com

support@dvauction.com

402-316-5460 || 402-474-5557



FOR REFERENCE **LCDR SPELLBOUND 295L**

ASA #4264388

	CE	BW	WW	YW	MCE	MILK	MWW	STAY	DOC	CW	YG	MARB	REA	\$API	\$TI
EPD	9.1	2.4	87.9	136.0	8.0	36.7	80.5	15.1	14.6	34.2	-0.43	0.47	0.93	149.9	94.4
RANK	60	75	25	20	20	2	2	55	20	45	25	15	45	25	15

55 **WS 70N**



Red Homozygous Polled PB SM
ASA #4535844 70N BD: 2/26/2025

Act. BW	Adj. WW	Adj. YW	ADG	SC	CLAW	ANGLE	MARB	RE	BF
82	715	1330	3.8	41.8	6	6	2.10	15.50	0.18
ET	ET	ET	-	-	-	-	87	99	78

SIRE ROCKIN H CAPTIVATE J75 DAM WS PRIME BEEF Z8
LCDR SPELLBOUND 295L WS ELITE E65
CDI MISS ABUNDANCE 42E WS MAJESTIC Z133

	CE	BW	WW	YW	MCE	MILK	MWW
EPD	8.2	0.5	85.4	129.8	6.2	31.5	74.1
RANK	70	40	30	30	45	10	10

	STAY	DOC	CW	YG	MARB	REA	\$API	\$TI
EPD	18.7	10.9	29.3	-0.43	0.42	0.96	154.7	92.9
RANK	20	65	65	25	20	35	25	20

- A wonderful ET son out of Spellbound
- This bull just gets better every day
- He carries one of the biggest scrotums and is top 10 in ADG
- We have only a couple Spellbound sons in the sale due to having mostly heifer calves his first calf crop



WS 70N Sells as Lot 55.

56 **WS 118N**



Red Homozygous Polled PB SM
ASA #4535917 118N BD: 3/26/2025

Act. BW	Adj. WW	Adj. YW	ADG	SC	CLAW	ANGLE	MARB	RE	BF
91	690	1228	3.3	39.3	6	6	2.99	11.36	0.19
102	98	101	-	-	-	-	109	79	86

SIRE ROCKIN H CAPTIVATE J75 DAM CDI VERDICT 220Y
LCDR SPELLBOUND 295L WS ETIQUETTE E131
CDI MISS ABUNDANCE 42E WS CRIMSON A255

	CE	BW	WW	YW	MCE	MILK	MWW
EPD	13.2	0.4	82.6	120.6	7.4	28.1	69.3
RANK	20	35	40	50	25	20	25

	STAY	DOC	CW	YG	MARB	REA	\$API	\$TI
EPD	18.7	13.0	31.1	-0.29	0.60	0.70	168.6	95.4
RANK	20	35	60	80	10	90	10	15

- This bull is a maternal brother to WS Jam-packed who is a herd sire at Keller's Broken Heart Ranch
- He just does a lot of things right
- Solid EPD profile, big scrotal, ADG and IMF



WS 118N Sells as Lot 56.

BREEDING FOR THE FUTURE BULLS



WS 4N Sells as Lot 57.

57	WS 4N										
	Red	ASA #4535944	Homozygous Polled							PB SM	
											BD: 1/5/2025
Act. BW	Adj. WW	Adj. YW	ADG	SC	CLAW	ANGLE	MARB	RE	BF		
72	693	1253	3.5	34.5	6	5	2.76	14.67	0.19		
86	99	101	-	-	-	-	111	97	83		

SIRE TJ HEISMAN 388F
BRIDLE BIT HERSHEL H027
 BRIDLE BIT MISS E7102

DAM HOOK'S FULL FIGURES 11F
WS KARINA K126
 WS RED CROSS Z144

	CE	BW	WW	YW	MCE	MILK	MWW
EPD	20.1	-4.2	71.3	110.4	11.0	33.7	69.2
RANK	1	1	85	70	1	4	25

	STAY	DOC	CW	YG	MARB	REA	\$API	\$TI
EPD	20.9	13.3	27.5	-0.25	0.95	0.67	205.9	104.4
RANK	10	35	70	90	1	90	1	3

- Heifer bull with a 20 in CE and -4 in BW
- Really good marbling and high API and TI
- Has a lot of style and phenotype
- Good structured, and free moving, and has a good hip on him
- Comes from a very good cow family
- Great maternal-should make good females



WS 5N Sells as Lot 58.

58	WS 5N										
	Red	ASA #4535930	Homozygous Polled							PB SM	
											BD: 1/6/2025
Act. BW	Adj. WW	Adj. YW	ADG	SC	CLAW	ANGLE	MARB	RE	BF		
88	740	1142	2.5	34.1	6	5	2.15	15.58	0.17		
106	107	97	-	-	-	-	79	106	89		

SIRE HOOK'S XPECTATION 36X
CDI NORTH DAKOTA 288A
 HOOK'S MISS KING 40Y

DAM 9 MILE ABUNDANCE 7507
WS KATHRYN K137
 WS BLACK VELVET B178

	CE	BW	WW	YW	MCE	MILK	MWW
EPD	11.8	1.2	87.9	125.9	6.5	31.6	75.5
RANK	30	50	25	40	40	10	10

	STAY	DOC	CW	YG	MARB	REA	\$API	\$TI
EPD	19.8	15.7	35.7	-0.33	0.46	1.00	161.5	94.3
RANK	15	10	45	65	15	30	15	15

- Very balanced in his EPD profile
- He has a very maternally stacked pedigree coming from both sides
- Dam sells as Lot 65





WS FAST FORWARD J30 Dam of Lots 59, 60.



WS I LOVE LUCY LZ Maternal sister to Lots 59, 60.

59 WS 64N

Red Homozygous Polled PB SM
 ASA #4535838 64N BD: 2/23/2025

Act. BW	Adj. WW	Adj. YW	ADG	SC	CLAW	ANGLE	MARB	RE	BF
82	630	1155	3.3	36.2	4	5	2.73	12.46	0.23
ET	ET	ET	-	-	-	-	94	91	92

SIRE CDI ABUNDANCE 391C DAM HOOK'S FULL FIGURES 11F
 9 MILE ABUNDANCE 7507 WS FAST FORWARD J30
 CDI MS XPECTATION 80Z WS PAY IT FORWARD G64

CE	BW	WW	YW	MCE	MILK	MWW	
8.6	-0.5	80.9	128.3	4.6	24.7	65.0	
RANK 65	25	45	35	75	40	45	
STAY	DOC	CW	YG	MARB	REA	\$API	\$TI
14.5	13.5	41.3	-0.27	0.45	0.75	148.9	91.3
RANK 60	30	25	85	20	80	30	25

Like his brother, 64N may be one of the best 7507 sons we have raised. He has a more fleshy look about him and still wide, square hiped and big ribbed in his make up. -Aaron

60 WS 71N

Red Homozygous Polled PB SM
 ASA #4535865 71N BD: 2/26/2025

Act. BW	Adj. WW	Adj. YW	ADG	SC	CLAW	ANGLE	MARB	RE	BF
95	800	1410	3.8	38.8	6	5	2.63	14.71	0.25
ET	ET	ET	-	-	-	-	89	97	119

SIRE CDI ABUNDANCE 391C DAM HOOK'S FULL FIGURES 11F
 9 MILE ABUNDANCE 7507 WS FAST FORWARD J30
 CDI MS XPECTATION 80Z WS PAY IT FORWARD G64

CE	BW	WW	YW	MCE	MILK	MWW	
6.8	2.0	91.8	143.4	4.5	24.7	70.5	
RANK 85	70	15	15	75	40	20	
STAY	DOC	CW	YG	MARB	REA	\$API	\$TI
14.5	12.6	53.8	-0.38	0.47	1.21	147.6	95.4
RANK 60	40	10	45	15	10	30	15

I just can't get enough of the Abundance 7507 cattle. 71N is an echo of what you can expect when breeding 7507. Clean, expressive, confident and dark colored. And to echo my own words in the past, "I've never seen another bull stamp udders the way 7507 does" with that level of consistency. -Aaron

61 WS 46N

Red Homozygous Polled PB SM
 ASA #4535987 46N BD: 2/9/2025

Act. BW	Adj. WW	Adj. YW	ADG	SC	CLAW	ANGLE	MARB	RE	BF
79	683	1206	3.3	35.4	5	6	2.94	13.93	0.26
93	99	102	-	-	-	-	108	95	137

SIRE IR IMPERIAL D948 DAM HOOK'S EMPIRE 61E
 RR5-MR MOAB J239 WS KAYLA K51
 LCDR MS EMBER 724E DCR MS ABILENE F350

CE	BW	WW	YW	MCE	MILK	MWW	
7.2	1.5	86.4	136.4	6.8	22.8	65.8	
RANK 80	55	30	20	35	55	40	
STAY	DOC	CW	YG	MARB	REA	\$API	\$TI
13.3	7.5	47.5	-0.30	0.85	1.07	165.1	101.7
RANK 70	90	15	75	1	20	15	5

•This bull has nice balanced EPD's with good marbling
 •He has a speck in his left eye from an injury as a calf. It does not impact his vision.



WS KAYLA K51 Dam of Lot 61.

LEGACY BUILDING DONOR



WS SWEET SIXTEEN F16 Sells as Lot 62.



WS MARVEL 8M
Grandson of
Lot 62.

62

WS SWEET SIXTEEN F16

Homozygous Black ASA #3431735 Homozygous Polled F16 PB SM
BD: 1/24/2018



Act. BW 69	Adj. WW 564 102	Adj. YW 907 102	MARB 4.27 149	RE 12.00 100	BF 0.34 126	
---------------	-----------------------	-----------------------	---------------------	--------------------	-------------------	--

SIRE HOOKS SHEAR FORCE 38K DAM WS PRIME TIME B6
HOOK'S BEACON 56B WS LIGHTS COME ON D217
HOOKS ZAFIRAH 41Z WS ZARZAPARILLA Z187

EPD	CE	BW	WW	YW	MCE	MILK	MWW
RANK	16.6	-3.3	72.0	110.6	10.1	28.7	64.6
	5	3	80	70	3	20	45

EPD	STAY	DOC	CW	YG	MARB	REA	\$API	\$TI
RANK	19.7	10.7	42.3	-0.21	0.77	1.19	187.5	98.1
	10	65	25	95	2	10	2	10

Bred 5/27/2025 to CDI Levite (4279833). Due 3/8/2026 with heifer calf.

PM EPDs	CE	BW	WW	YW	MCE	MILK	MWW	STAY	DOC	CW	YG	MARB	REA	\$API	\$TI
RANK	11.4	-0.2	79.9	123.2	7.4	30.9	70.8	20.8	12.2	40.2	-0.19	0.63	0.91	171.1	93.7
	35	25	50	45	25	10	20	5	45	25	95	5	45	10	15




WS SWEET
KATCH K4
Daughter of
Lot 62.


WS Sweet Sixteen scared us with a broken rear leg between the knee and ankle at only two weeks of age. After about a month of barn time and special care she pulled through and to this day, I cannot tell you which leg she fractured. One point I often relay from that experience is how gentle her cow family is as her mother would stand over us while we would redress the splint regularly in a 17 sq ft calving pen...as if to make sure we were doing it right.

So in short, from a personal perspective, it is difficult to part with WS Sweet Sixteen. But I believe there is someone who can take her places I cannot and continue improving this breed through her truly unique genetic building blocks and structural influence.

Physically, I love her mating to CDI Levite...I wish I had a flush from her this way. I believe the heifer to come could be a great one. -Aaron

63 WS JACINTH J37 

Homozygous Black ASA #3912055 Homozygous Polled J37 3/4 SM 1/4 AN
BD: 2/18/2021

Act. BW	Adj. WW	Adj. YW	MARB	RE	BF	
80 98	548 93	963 95	3.19 79	12.50 100	0.25 83	



WS JACINTH J37 Sells as Lot 63.


SIRE HOOK'S BLACK HAWK 50B DAM HOOKS SHEAR FORCE 38K
HOOK'S EAGLE 6E HOOK'S BONITA 52B
HOOK'S CRYSTAL 1C HOOK'S ZENITH 24Z

CE	BW	WW	YW	MCE	MILK	MWW
14.3	-0.9	88.8	140.7	6.8	12.3	56.5
RANK 25	RANK 40	RANK 20	RANK 20	RANK 55	RANK 99	RANK 80


STAY	DOC	CW	YG	MARB	REA	\$API	\$TI
15.9	13.8	38.2	-0.38	0.19	1.19	136.0	85.3
RANK 45	RANK 35	RANK 50	RANK 10	RANK 85	RANK 2	RANK 50	RANK 45

Bred 7/3/2025 to CDI Levite (4279833). Due 4/14/2026 with bull calf.

CE	BW	WW	YW	MCE	MILK	MWW	STAY	DOC	CW	YG	MARB	REA	\$API	\$TI
10.2	1.1	88.3	138.2	5.7	22.7	66.8	18.9	13.8	38.2	-0.28	0.34	0.91	151.4	89.4
RANK 45	RANK 45	RANK 25	RANK 20	RANK 50	RANK 55	RANK 35	RANK 20	RANK 25	RANK 30	RANK 80	RANK 25	RANK 45	RANK 25	RANK 25

64 WS KIA K30 

Homozygous Black ASA #4070743 Homozygous Polled K30 PB SM
BD: 2/5/2022

Act. BW	Adj. WW	Adj. YW	MARB	RE	BF	
80 98	628 111	952 108	3.56 111	11.44 108	0.26 118	



WS KIA K30 Sells as Lot 64.


SIRE WS PROCLAMATION E202 DAM HOOK'S BEACON 56B
KBHR HERO H109 BAR CK MS 56B 8037F
KBHR E197 BAR CK MS 1006X 3065A

CE	BW	WW	YW	MCE	MILK	MWW
13.2	-1.4	77.4	119.0	9.3	26.0	64.6
RANK 20	RANK 15	RANK 60	RANK 50	RANK 10	RANK 30	RANK 45

STAY	DOC	CW	YG	MARB	REA	\$API	\$TI
20.5	5.4	23.2	-0.32	0.62	0.97	175.6	95.1
RANK 10	RANK 99	RANK 85	RANK 70	RANK 10	RANK 35	RANK 5	RANK 15

Bred 7/18/2025 to CDI HIT MAN (3801593). Due 4/29/2026 with heifer calf.

CE	BW	WW	YW	MCE	MILK	MWW	STAY	DOC	CW	YG	MARB	REA	\$API	\$TI
13.4	-0.3	83.1	128.5	8.6	28.4	69.8	21.3	11.6	32.5	-0.27	0.46	0.88	167.4	92.0
RANK 20	RANK 25	RANK 40	RANK 35	RANK 10	RANK 20	RANK 25	RANK 4	RANK 50	RANK 50	RANK 85	RANK 15	RANK 50	RANK 10	RANK 20

65 WS KATHRYN K137 

Red ASA #4152731 Homozygous Polled K137 PB SM
BD: 9/29/2022

Act. BW	Adj. WW	Adj. YW	MARB	RE	BF
94 106	N/A N/A	N/A N/A	2.58 0	10.11 0	0.06 0



WS KATHRYN K137 Sells as Lot 65.

SIRE CDI ABUNDANCE 391C DAM WS ATLAS Y132
9 MILE ABUNDANCE 7507 WS BLACK VELVET B178
CDI MS XPECTATION 80Z WS RED RUBY W27


CE	BW	WW	YW	MCE	MILK	MWW
6.5	5.0	93.9	145.1	3.7	34.9	81.8
RANK 85	RANK 99	RANK 10	RANK 10	RANK 85	RANK 3	RANK 2

STAY	DOC	CW	YG	MARB	REA	\$API	\$TI
13.5	14.3	45.7	-0.32	0.37	1.06	134.3	91.0
RANK 70	RANK 25	RANK 20	RANK 70	RANK 25	RANK 20	RANK 50	RANK 25

Bred 7/10/2025 to WS FULL RANGE 5K (4070726). Due 4/21/2026 with heifer calf.

CE	BW	WW	YW	MCE	MILK	MWW	STAY	DOC	CW	YG	MARB	REA	\$API	\$TI
7.1	3.7	93.0	142.0	5.9	35.9	82.3	15.1	15.2	35.0	-0.35	0.43	1.10	142.1	92.5
RANK 80	RANK 85	RANK 15	RANK 15	RANK 45	RANK 2	RANK 1	RANK 50	RANK 10	RANK 40	RANK 55	RANK 20	RANK 15	RANK 35	RANK 20

BREEDING FOR THE FUTURE BRED FEMALES

66 WS FIREPLACE L16  **PB SM**
 Homozygous Black ASA #4231687 Homozygous Polled L16 **BD: 1/27/2023**

Act. BW	Adj. WW	Adj. YW	MARB	RE	BF
83	565	792	3.54	7.93	0.09
115	102	92	75	80	53


SIRE EGL FIRESTEEL 103F **DAM** LCDR ALIBI 106E
LCDR FIREPROOF 206H **WS JUST THE WAY J16**
 WS MISS SUGAR C4 WS GOT THIS FEELING G54

CE	BW	WW	YW	MCE	MILK	MWW
7.9	2.0	83.0	123.3	2.9	30.9	72.3
75	65	40	40	95	10	15

STAY	DOC	CW	YG	MARB	REA	\$API	\$TI
12.6	18.5	39.4	-0.20	0.60	0.64	146.8	92.9
75	2	30	95	10	95	30	20

Bred 7/26/2025 to CDI HIT MAN (3801593). Due 5/7/2026 with bull calf.

CE	BW	WW	YW	MCE	MILK	MWW	STAY	DOC	CW	YG	MARB	REA	\$API	\$TI
10.7	1.4	85.9	130.6	5.4	30.8	73.6	17.4	18.1	40.6	-0.21	0.45	0.71	152.3	90.6
40	50	30	30	55	10	15	30	2	25	95	15	85	25	25

67 WS LONDON L17  **PB SM**
 Red ASA #4231677 Homozygous Polled L17 **BD: 1/23/2023**

Act. BW	Adj. WW	Adj. YW	MARB	RE	BF
78	554	889	3.19	9.66	0.13
109	99	97	70	84	68


SIRE WS ALL ABOARD B80 **DAM** WS OUTCROSS C164
BRIDLE BIT RED ROCK G9124 **WS JENESIS J19**
 BRIDLE BIT MISS A327 WS GENESIS G102

CE	BW	WW	YW	MCE	MILK	MWW
11.8	0.8	87.7	134.0	7.7	20.6	64.4
30	45	25	25	20	70	45

STAY	DOC	CW	YG	MARB	REA	\$API	\$TI
10.5	16.5	38.8	-0.38	0.54	0.86	150.1	96.3
90	10	35	45	10	60	25	15

Bred 7/12/2025 to LCDR SPELLBOUND (4264388). Due 4/23/2026 with bull calf.

CE	BW	WW	YW	MCE	MILK	MWW	STAY	DOC	CW	YG	MARB	REA	\$API	\$TI
10.5	1.6	87.8	135.0	7.9	28.7	72.5	12.8	15.6	36.5	-0.41	0.51	0.90	148.6	94.1
45	55	25	25	20	15	15	75	10	35	30	15	50	30	15

68 WS LUVERNE L33  **PB SM**
 Red ASA #4231626 Homozygous Polled L33 **BD: 2/6/2023**

Act. BW	Adj. WW	Adj. YW	MARB	RE	BF
82	640	948	3.55	12.52	0.29
109	109	106	101	111	138


SIRE HOOK'S XPECTATION 36X **DAM** WS HOT BEEF X38
CDI NORTH DAKOTA 288A **WS HOT STOP H23**
 HOOK'S MISS KING 40Y WS TWO STEP E70

CE	BW	WW	YW	MCE	MILK	MWW
7.0	3.2	97.2	140.2	6.8	25.2	73.7
80	85	10	15	35	35	15

STAY	DOC	CW	YG	MARB	REA	\$API	\$TI
17.1	16.3	48.1	-0.38	0.45	1.03	149.8	96.0
35	10	15	45	15	25	25	15

Bred 7/20/2025 to WS TOMKAT (4070902). Due 5/1/2026 with bull calf.

CE	BW	WW	YW	MCE	MILK	MWW	STAY	DOC	CW	YG	MARB	REA	\$API	\$TI
5.3	3.7	90.2	130.7	6.3	26.5	71.5	15.6	13.6	41.2	-0.44	0.58	1.08	147.0	93.2
90	85	20	30	40	25	20	45	30	25	20	10	15	30	15

69 WS LARAMIE L43  **3/4 SM 7/32 AN 1/32 AN**
 Homozygous Black ASA #4231735 Homozygous Polled L43 **BD: 2/11/2023**

Act. BW	Adj. WW	Adj. YW	MARB	RE	BF
92	563	875	9.02	10.91	0.13
126	102	102	192	111	76

SIRE TJ HEISMAN 388F **DAM** HOOK'S GIBRALTAR 4G
BRIDLE BIT HERSHEL H027 **WS JOZIE J18**
 BRIDLE BIT MISS E7102 WS GLAMOR G4

CE	BW	WW	YW	MCE	MILK	MWW
0.8	4.2	96.2	154.9	3.3	24.7	72.6
99	99	10	10	95	45	15

STAY	DOC	CW	YG	MARB	REA	\$API	\$TI
9.7	8.7	58.9	-0.31	1.40	1.11	166.3	112.3
90	90	10	20	1	4	10	1

Bred 8/6/2025 to KBHR MARSHALL (4387188). Due 5/18/2026 with heifer calf.

CE	BW	WW	YW	MCE	MILK	MWW	STAY	DOC	CW	YG	MARB	REA	\$API	\$TI
5.8	1.5	89.7	139.7	4.2	26.6	71.3	13.3	10.1	53.1	-0.24	1.11	0.94	176.8	108.5
90	50	20	20	80	25	20	70	70	10	90	1	40	4	1



70 WS LAYA L114  **3/4 SM 1/4 AN**
 Heterozygous Black ASA #4312692 Homozygous Polled L114 **BD: 5/20/2023**

Act. BW	Adj. WW	Adj. YW
68	388	713
ET	ET	ET

SIRE G A R SURE FIRE **DAM** WS HOT BEEF X38
EGL FIRESTEEL 103F **WS ANISE A71**
 TJ 22X WS MISS BRANDY T28

CE	BW	WW	YW	MCE	MILK	MWW
17.3	-0.5	73.8	106.5	7.2	23.5	60.3
10	45	65	80	50	55	65

STAY	DOC	CW	YG	MARB	REA	\$API	\$TI
19.5	16.5	30.4	-0.37	0.75	0.95	168.9	90.5
10	10	75	10	10	15	10	25

Bred 7/4/2025 to RHONE MR PENN 228M (4411509). Due 4/15/2026 with bull calf.

CE	BW	WW	YW	MCE	MILK	MWW	STAY	DOC	CW	YG	MARB	REA	\$API	\$TI
11.3	1.0	87.0	136.6	6.3	24.5	67.9	17.2	13.6	46.2	-0.34	0.79	1.04	172.9	100.1
35	45	25	20	40	40	30	30	30	15	60	2	20	10	5

71 WS LILITH L183

Heterozygous Black ASA #4290824 Homozygous Polled L183 PB SM BD: 10/7/2023

Act. BW	Adj. WW	Adj. YW
72	512	N/A
87	93	N/A



WS LILITH L183 Sells as Lot 71.

SIRE KBHR HIGH ROAD E283 DAM MCM TOP GRADE 018X
3C HARMONY 0575H B DCR MST GRADE C32
 3C CROCUS 3427A BWF DCR MS B/SABRE A378

CE	BW	WW	YW	MCE	MILK	MWW
11.9	-0.7	69.2	110.0	7.9	28.7	63.2
30	20	90	70	20	20	50

STAY	DOC	CW	YG	MARB	REA	\$API	\$TI
20.4	9.5	37.8	-0.45	0.60	1.25	169.6	89.9
10	80	35	20	10	4	10	25

Bred 6/23/2025 to KLEIN MONARCH (4390043). Due 4/4/2026 with bull calf.

CE	BW	WW	YW	MCE	MILK	MWW	STAY	DOC	CW	YG	MARB	REA	\$API	\$TI
12.5	-1.3	74.5	118.0	7.3	27.5	64.7	19.0	10.7	41.9	-0.33	0.72	1.07	175.1	94.8
25	15	70	50	25	20	45	15	65	25	65	3	20	5	15

72 WS LETTIE L193

Red ASA #4364118 Homozygous Polled L193 PB SM BD: 12/28/2023

Act. BW	Adj. WW	Adj. YW	MARB	RE	BF
71	622	N/A	3.46	13.60	0.26
99	109	N/A	96	114	118



WS LETTIE L193 Sells as Lot 72.

SIRE CDI ABUNDANCE 391C DAM HOOK'S EMPIRE 61E
CDI/NF HONOR GUARD 267H WS FASHION SHOW J132
 CDI MISS VERDICT 141C WS DESIGNER D153

CE	BW	WW	YW	MCE	MILK	MWW
11.0	1.5	82.3	135.5	6.0	27.2	68.3
40	55	40	25	45	25	30

STAY	DOC	CW	YG	MARB	REA	\$API	\$TI
15.2	16.8	39.7	-0.37	0.40	1.09	149.2	90.0
55	5	30	50	20	15	30	25

Bred 6/2/2025 to WS LANDMARK (4231775). Due 3/14/2026 with twin heifer calves.

CE	BW	WW	YW	MCE	MILK	MWW	STAY	DOC	CW	YG	MARB	REA	\$API	\$TI
17.2	-2.0	76.1	121.0	9.9	27.2	65.2	15.8	15.0	31.3	-0.34	0.62	0.92	171.4	94.7
4	10	65	45	3	20	40	45	15	50	60	10	45	10	15

73 WS MILKY WAY M8

Homozygous Black ASA #4364006 Homozygous Polled M8 PB SM BD: 1/12/2024

Act. BW	Adj. WW	Adj. YW	MARB	RE	BF
64	538	859	3.34	9.57	0.27
90	96	96	101	86	113



WS MILKY WAY M8 Sells as Lot 73.

SIRE HHS MR ENTOURAGE 867B DAM WS HILTON 15H
LCDR RESERVE 210J WS KLIMATE K40
 LCDR MS ECHO 43E WS BLACK STAR H33

CE	BW	WW	YW	MCE	MILK	MWW
15.1	-2.3	84.5	130.9	9.2	25.6	67.9
10	10	35	30	10	35	30

STAY	DOC	CW	YG	MARB	REA	\$API	\$TI
19.1	16.8	32.3	-0.20	0.37	0.74	165.7	94.0
15	5	55	95	25	80	10	15

Bred 6/1/2025 to WS MARVEL 8M (4363941). Due 3/13/2026 with bull calf.

CE	BW	WW	YW	MCE	MILK	MWW	STAY	DOC	CW	YG	MARB	REA	\$API	\$TI
12.4	-1.1	94.0	148.9	8.9	28.7	75.7	18.0	17.5	46.4	-0.26	0.66	1.0	176.6	104.5
25	15	10	10	10	15	10	20	3	15	85	4	30	4	3

How about we kick off our bred heifer line up with a little bit of chrome trimmed, black beauty right here. She is sweet, attractive and is backed by a fine set of cows with a dam who exhibits a picture perfect udder. And with her purchase, she is bred to give you one of the first calves from the inspiring new sire, WS Marvel. I'm reserving the right to flush her for 10 quality embryos with an open top. -Aaron

BREEDING FOR THE FUTURE BRED FEMALES



WS MARGOT M41 Sells as Lot 74.

74	WS MARGOT M41				
	Red ASA #4364110	Homozygous Polled M41	PB SM BD: 2/8/2024		
Act. BW	Adj. WW	Adj. YW	MARB	RE	BF
85	557	975	3.27	10.07	0.17
117	94	107	105	96	106

SIRE	IR IMPERIAL D948			DAM			3C HARMONY 0575H B		
BAR CK ADMIRAL 0053H			WS KALILA K145						
BAR CK MS 4856B 6112D			WS ELITE E65						
EPD	CE	BW	WW	YW	MCE	MILK	MWW		
RANK	7.2	2.4	94.3	150.7	5.3	23.7	70.8		
	80	75	10	10	60	45	20		

EPD	STAY	DOC	CW	YG	MARB	REA	\$API	\$TI
RANK	15.2	13.6	50.1	-0.38	0.47	1.18	150.7	96.6
	55	30	10	45	15	10	25	10

Bred 6/1/2025 to KBHR CHARGER (4104220). Due 3/13/2026 with heifer calf.

PM	CE	BW	WW	YW	MCE	MILK	MWW	STAY	DOC	CW	YG	MARB	REA	\$API	\$TI
EPDs	11.9	-0.2	86.8	135.0	6.0	23.9	67.3	19.1	13.3	32.5	-0.40	0.59	1.01	170.5	97.4
RANK	30	25	25	20	45	45	30	15	30	50	35	10	30	10	10

75	WS MAGNOLIA M47			
	Homozygous Black ASA #4364032	Homozygous Polled M47	PB SM BD: 2/13/2024	

Act. BW	Adj. WW	Adj. YW	MARB	RE	BF
78	538	966	2.36	9.57	0.19
106	95	104	65	84	100

SIRE	GIBBS 9114G ESSENTIAL			DAM			WS CEO C155		
JC MR PONTIAC D114K			WS JAZELYN J38						
FSCR D114 LUCILLE B089XP			WS EXOTIC E9						

EPD	CE	BW	WW	YW	MCE	MILK	MWW
RANK	10.9	0.2	90.2	141.5	7.6	24.7	69.7
	40	35	20	15	20	40	25

EPD	STAY	DOC	CW	YG	MARB	REA	\$API	\$TI
RANK	19.9	12.2	54.9	-0.13	0.07	0.87	143.1	86.1
	10	45	5	99	70	55	35	35

Bred 6/8/2025 to KLEIN MONARCH (4390043). Due 3/20/2026 with twin bull calves.

PM	CE	BW	WW	YW	MCE	MILK	MWW	STAY	DOC	CW	YG	MARB	REA	\$API	\$TI
EPDs	12.0	-0.8	85.0	133.8	7.1	25.5	67.9	18.8	12.1	50.4	-0.17	0.45	0.88	161.6	92.7
RANK	30	20	30	25	30	35	30	20	45	5	95	15	50	15	20

76	WS MACIE M51			
	Heterozygous Black ASA #4364113	Homozygous Polled M51	PB SM BD: 2/17/2024	

Act. BW	Adj. WW	Adj. YW	MARB	RE	BF
71	592	887	2.32	10.94	0.30
100	102	97	72	94	143

SIRE	IR IMPERIAL D948			DAM			9 MILE ABUNDANCE 7507		
BAR CK ADMIRAL 0053H			WS KERENSA K79						
BAR CK MS 4856B 6112D			WS FAITH F65						

EPD	CE	BW	WW	YW	MCE	MILK	MWW
RANK	12.4	-0.4	73.0	106.1	7.3	28.2	64.6
	25	25	75	80	25	20	45

EPD	STAY	DOC	CW	YG	MARB	REA	\$API	\$TI
RANK	20.6	17.1	19.4	-0.22	0.65	0.69	171.1	91.2
	10	4	95	95	5	90	10	25

Bred 6/29/2025 to KLEIN MONARCH (4390043). Due 4/10/2026 with heifer calf.

PM	CE	BW	WW	YW	MCE	MILK	MWW	STAY	DOC	CW	YG	MARB	REA	\$API	\$TI
EPDs	12.7	-1.1	76.4	116.1	7.0	27.2	65.4	19.1	14.5	32.7	-0.21	0.74	0.79	174.9	95.0
RANK	25	15	65	55	30	20	40	15	20	50	95	3	70	5	15



WS MAKENNA M63 Sells as Lot 77.

77	WS MAKENNA M63			
	Red ASA #4363998	Homozygous Polled M63	PB SM BD: 2/28/2024	

Act. BW	Adj. WW	Adj. YW	MARB	RE	BF
89	546	891	2.67	10.34	0.15
120	105	101	70	107	88

SIRE	GW PREDESTINED 701T			DAM			CDI DOWNTOWN 400D		
BCLR FORGE J8871			WS JORIE J46						
KS ZADA Z887			WS ELITE E65						

EPD	CE	BW	WW	YW	MCE	MILK	MWW
RANK	0.7	5.5	108.4	166.6	1.3	24.6	78.7
	99	99	1	1	99	40	3

EPD	STAY	DOC	CW	YG	MARB	REA	\$API	\$TI
RANK	13.9	11.3	36.1	-0.45	0.55	1.08	143.7	102.2
	65	60	40	20	10	20	35	4

Bred 6/17/2025 to LCDR SPELLBOUND (4264388). Due 3/28/2026 with heifer calf.

PM	CE	BW	WW	YW	MCE	MILK	MWW	STAY	DOC	CW	YG	MARB	REA	\$API	\$TI
EPDs	4.9	4.0	98.2	151.3	4.7	30.7	79.6	14.5	13.0	35.2	-0.44	0.51	1.01	144.8	96.8
RANK	95	90	10	10	70	10	3	60	35	40	20	15	25	35	10

78 WS MAGDALENA M74

Homozygous Black ASA #4364104 Homozygous Polled M74 PB SM
BD: 3/6/2024

Act. BW	Adj. WW	Adj. YW	MARB	RE	BF
72	612	944	3.47	11.97	0.18
93	109	104	112	106	82



SIRE EGL FIRESTEEL 103F DAM WS CEO C155
LCDR FIREPROOF 206H WS ENTHRALLED E76
WS MISS SUGAR C4 WS LITTLE SISTER W37

CE	BW	WW	YW	MCE	MILK	MWW
11.6	1.1	84.4	130.6	4.8	28.1	70.2
35	50	35	30	70	20	25

STAY	DOC	CW	YG	MARB	REA	\$API	\$TI
13.1	14.5	42.1	-0.39	0.68	1.16	161.2	98.4
70	20	25	40	4	10	15	10

Bred 6/23/2025 to KLEIN MONARCH (4390043). Due 4/4/2026 with bull calf.

CE	BW	WW	YW	MCE	MILK	MWW	STAY	DOC	CW	YG	MARB	REA	\$API	\$TI
12.3	-0.4	82.1	128.3	5.7	27.2	68.2	15.4	13.2	44.0	-0.30	0.76	1.03	170.9	99.0
25	25	40	35	50	20	30	50	35	20	75	2	25	10	10

79 WS MYRA M80

Homozygous Black ASA #4364164 Homozygous Polled M80 3/4 SM 1/4 AN
BD: 3/10/2024

Act. BW	Adj. WW	Adj. YW	MARB	RE	BF
76	507	823	2.19	11.75	0.22
98	90	90	70	104	100

80 WS MISS MERLOT M101

Heterozygous Black ASA #4363951 Homozygous Polled M101 PB SM
BD: 3/30/2024

Act. BW	Adj. WW	Adj. YW	MARB	RE	BF
85	602	937	11.92	N/A	N/A
109	105	103	99	N/A	N/A

SIRE EGL FIRESTEEL 103F DAM HOOK'S BEACON 56B
LCDR FIREPROOF 206H WS FOREFRONT F15
WS MISS SUGAR C4 WS DORCAS D247

CE	BW	WW	YW	MCE	MILK	MWW
13.5	-0.9	78.9	125.0	4.2	25.2	64.5
35	40	50	45	90	40	45

STAY	DOC	CW	YG	MARB	REA	\$API	\$TI
14.4	14.8	33.3	-0.28	0.45	0.94	141.4	86.4
60	25	65	25	45	15	40	40

Bred 6/8/2025 to HOOK'S GALILEO (3563620). Due 3/20/2026 with heifer calf.

CE	BW	WW	YW	MCE	MILK	MWW	STAY	DOC	CW	YG	MARB	REA	\$API	\$TI
14.4	-1.7	85.1	133.2	7.4	32.4	74.8	16.1	17.2	42.3	-0.22	0.83	0.81	180.2	103.8
25	25	30	30	45	3	10	40	10	40	40	10	30	3	3

SIRE LCDR IMPACT 134F DAM HOOK'S BROADWAY 11B
CDI HIT MAN 306H LCDR MS ELEANOR 6E
CDI MS 701T 13Z CDI MS ENTOURAGE 196X

CE	BW	WW	YW	MCE	MILK	MWW
11.6	-0.4	80.1	116.2	5.1	25.8	65.7
35	25	50	55	65	30	40

STAY	DOC	CW	YG	MARB	REA	\$API	\$TI
20.9	16.4	36.6	-0.30	0.30	0.83	154.7	87.0
5	10	40	75	35	65	25	35

Bred 6/8/2025 to WS MARVEL 8M (4363941). Due 3/20/2026 with bull calf.

CE	BW	WW	YW	MCE	MILK	MWW	STAY	DOC	CW	YG	MARB	REA	\$API	\$TI
10.6	-0.1	91.8	141.6	6.8	28.8	74.6	18.9	17.3	47.6	-0.31	0.63	1.04	171.7	101.1
40	25	15	15	30	15	10	20	3	15	70	5	20	10	4

SERVICE Sires

NAME	ASA NUMBER	CE	BW	WW	YW	MCE	MILK	MWW	STAY	DOC	CW	YG	MARB	RE	\$API	\$TI
WS MARVEL 8M	4363941	9.6	0.2	103.5	166.9	8.5	31.7	83.4	16.9	18.2	60.5	-0.31	0.95	1.25	191.3	117.9
KLEIN MONARCH M040	4390043	13	-1.8	79.8	126	6.6	26.2	66.1	17.6	11.9	45.9	-0.2	0.83	0.89	183.2	102.1



WS Marvel 8M



Klein Monarch M040

ASA Quick Reference to EPDs, Indexes and \$Values

EXPECTED PROGENY DIFFERENCES (EPDs): EPDs are the most accurate and effective tool available for comparing genetic levels. In using EPDs, the difference between two sires' EPDs represents the unit difference expected in the performance of their progeny. For example, if sires A and B have EPDs of +10 and -5, a 15-unit difference would be expected in their progeny (moving from -5 to +10 yields 15 units). Key to using EPDs is knowing in what units they are expressed. For example, if the above case referred to weaning weight EPDs, sire A would be expected to sire 15 pounds more weaning weight than sire B. If calving ease was the trait, sire A would be expected to sire 15 percent more unassisted births in first-calf heifers; in other words, if sire B sired 30 assists in a group of 100 heifers, we would expect sire A to require 15 assists. A percentile-ranking chart is required to determine where a bull's EPDs rank him relative to other bulls in the breed. For more detailed information about EPDs and \$ indexes, visit www.simmental.org.

Listed below are the units in which ASA EPDs are expressed:

ALL-PURPOSE INDEX (API): Dollars per cow exposed under an all-purpose-sire scenario.

BACK FAT (BF): Inches of carcass backfat at 475 days.

BIRTH WEIGHT (BW): Pounds of birth weight.

CALVING EASE (CE): Percent of unassisted births when used on heifers.

CARCASS WEIGHT (CW): Pounds of carcass weight at 475 days.

DOCILITY (DOC): Percent of offspring receiving a disposition score of 1 (docile).

MATERNAL CALVING EASE (MCE): Percent of unassisted births in first-calving daughters.

MILK (MLK): Pounds of weaning weight due to milk.

MARBLING (MARB): Carcass marbling score at 475 days.

MATERNAL WEANING WEIGHT (MWW): Pounds of weaning weight due to milk and growth.

RIBEYE AREA (REA): Square inches of carcass ribeye at 475 days.

TERMINAL INDEX (TI): Dollars per cow exposed under a terminal-sire scenario.

WEANING WEIGHT (WW): Pounds of weaning weight.

YEARLING WEIGHT (YW): Pounds of yearling weight.

YIELD GRADE (YG): Carcass yield grade score at 475 days.

\$ INDEXES: Though EPDs allow for the comparison of genetic levels for many economically important traits, they only provide pieces of the economic puzzle. This is where \$ indexes come in. Through well-conceived, rigorous mathematical computation, \$ indexes blend EPDs and economics to estimate an animal's overall impact on integrated commercial production. The same technology that led to the dramatic progress in swine, poultry and dairy genetics over the last several decades was used to develop the following \$ indexes:

ALL-PURPOSE INDEX (API): Evaluates sires for use on the entire cow herd (bred to both Angus first-calf heifers and mature cows) with the portion of their daughters required to maintain herd size retained and the remaining heifers and steers put on feed and sold grade and yield.

TERMINAL INDEX (TI): Evaluates sires for use on mature Angus cows with all offspring put on feed and sold grade and yield.

For more detailed information about EPDs and \$ indexes, visit: www.simmental.org



HONORING OUR FRIEND

GEORGE WOLF – One of the most humble men I have ever met. A true cowboy and cattleman. Along with his faithful & hard-working wife, Irene, ran one of the most picturesque ranches along the Little Missouri River, north of Medora.

We had the pleasure of getting to know them 34 years ago, when they came to buy bulls, private treaty, which they continued to do until they retired and sold the ranch. They became so much more than customers. . . .they were great friends.

Our memories of George run deep. The sharp wit, his love of people and oh, the storytelling. As a young man, he got to know and work for some of the pioneer ranchers in the area. He shared a lot of what he experienced and also the many legends that he had heard. I loved listening to him share. Our children have many great memories, as well. Especially, the rattlesnake he caught and saved between two 5-gallon pails (the day before we were coming for a weekend visit), just to show us how easy it was to kill one. He said, "You cut the head off and make sure to throw the head one way and the body the other way, so that they don't find each other."

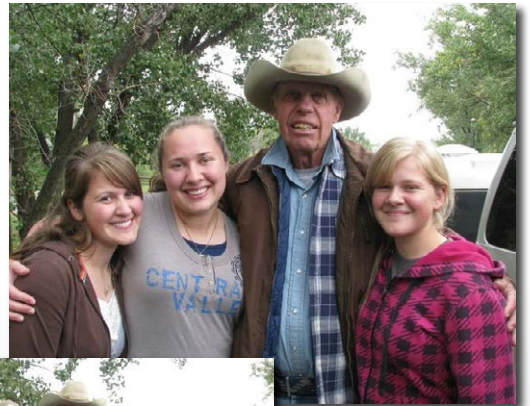
His kind words and the praise he would heap on others, will be what I remember most about him.

We all lost a great man, whom we will never forget.

Pray for his wonderful wife, Irene, who cared for him at home, until his last days.

Rest in Peace, dear friend.

Until Jesus returns,
Terry, Cathy & family.



A NOTE FROM THE SALE MANAGER

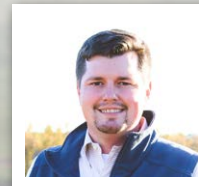
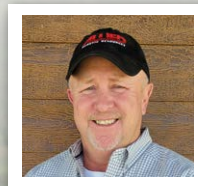


Welcome to the 2026 Wilkinson Farms Simmentals sale. We are extremely excited about the bulls and females being offered. This program is known for producing some of the top genetics in the Simmental breed. Through the years some of the breeds greatest AI sires and donor dams have sold through this sale. We feel that this year's offer has the potential to produce the next breed leading Herd Sire and donor female. The Schlenker family has been committed to producing cattle that keep moving the industry in a positive direction. They are students of the breed and are always striving to make the next generation better. With the use of new genomic technology as well as good old fashioned breeding philosophy this set of bulls and females might be the best produced in this program, only time will tell.

We have experienced some great times in the cattle industry with record high prices being paid for all classes of cattle. We have also experienced high input cost and weather challenges this past year in many parts of the country. With all this being said it proves why it is important to select your genetics from programs that have produced breed leading genetics for decades. They have survived the ups and downs we experience in the business, and this helps ensure your next genetic purchase has the potential to keep your cowherd equipped to take advantage of the good times and weather the bad.

As always, if you have questions about the offering or need assistance on sale day please reach out to any one of us on the Allied team.

Sincerely,
Marty Ropp, Corey Wilkins and Jared Murnin



2026 PUREBRED SIMMENTAL PERCENTILE TABLE

%	CE	BW	WW	YW	ADG	DMI	\$GN	MCE	MILK	MWW	STAY	DOC	CW	YG	MARB	BF	REA	API	TI
1	19.50	-4.00	105.80	165.70	0.39	-0.17	0.11	11.00	36.80	81.80	22.80	18.70	64.30	-0.58	0.81	-0.13	1.37	188.40	107.10
2	18.20	-3.30	102.60	160.20	0.37	-0.09	0.10	10.30	35.10	79.70	21.90	17.70	60.50	-0.56	0.73	-0.12	1.30	182.00	104.20
3	17.30	-2.90	100.50	156.50	0.36	-0.04	0.10	9.90	34.20	78.30	21.30	17.20	57.90	-0.54	0.68	-0.12	1.26	178.00	102.35
4	16.70	-2.60	99.00	153.80	0.35	0.00	0.09	9.60	33.40	77.20	20.90	16.80	55.80	-0.52	0.64	-0.12	1.23	174.90	100.90
5	16.30	-2.30	97.70	151.50	0.35	0.04	0.09	9.40	32.70	76.40	20.60	16.50	54.30	-0.51	0.60	-0.11	1.21	172.30	99.70
10	14.60	-1.50	93.40	143.80	0.32	0.14	0.08	8.50	30.20	73.50	19.50	15.40	49.30	-0.47	0.49	-0.10	1.13	163.40	95.70
15	13.60	-0.90	90.30	138.60	0.31	0.22	0.07	8.00	28.60	71.50	18.70	14.70	46.00	-0.45	0.42	-0.09	1.07	157.00	93.00
20	12.80	-0.50	88.00	134.50	0.29	0.28	0.06	7.50	27.40	69.90	18.10	14.20	43.40	-0.43	0.36	-0.09	1.03	152.20	90.70
25	12.10	-0.10	86.00	131.00	0.28	0.34	0.06	7.10	26.50	68.50	17.60	13.70	41.20	-0.42	0.32	-0.08	1.00	147.78	88.70
30	11.60	0.30	84.30	127.80	0.27	0.38	0.05	6.80	25.64	67.30	17.00	13.20	39.30	-0.40	0.28	-0.08	0.97	143.90	86.80
35	11.10	0.60	82.70	124.90	0.27	0.43	0.05	6.50	24.90	66.00	16.60	12.80	37.60	-0.39	0.25	-0.08	0.95	140.30	85.10
40	10.60	0.80	81.30	122.10	0.26	0.48	0.05	6.20	24.20	64.90	16.10	12.40	35.90	-0.38	0.22	-0.08	0.92	136.80	83.50
45	10.20	1.10	79.90	119.60	0.25	0.53	0.04	5.90	23.50	63.70	15.60	12.00	34.30	-0.37	0.19	-0.07	0.90	133.30	82.00
50	9.70	1.30	78.70	117.20	0.24	0.58	0.04	5.60	22.90	62.60	15.10	11.60	32.90	-0.36	0.16	-0.07	0.88	129.90	80.60
55	9.30	1.60	77.50	114.90	0.23	0.64	0.04	5.40	22.30	61.50	14.60	11.20	31.50	-0.34	0.14	-0.07	0.86	126.60	79.20
60	8.80	1.80	76.30	112.60	0.23	0.69	0.03	5.10	21.70	60.40	14.00	10.80	30.10	-0.33	0.11	-0.06	0.83	123.50	77.80
65	8.40	2.10	75.20	110.40	0.22	0.75	0.03	4.85	21.10	59.20	13.40	10.40	28.80	-0.32	0.09	-0.06	0.81	120.20	76.40
70	7.90	2.30	73.90	108.00	0.21	0.81	0.02	4.60	20.40	58.10	12.80	10.00	27.40	-0.31	0.06	-0.06	0.78	117.10	75.00
75	7.40	2.60	72.50	105.60	0.20	0.88	0.02	4.30	19.70	56.90	12.10	9.50	25.90	-0.29	0.03	-0.05	0.76	113.80	73.70
80	6.80	2.90	70.90	102.90	0.19	0.96	0.01	3.90	18.90	55.70	11.40	8.90	24.40	-0.28	0.01	-0.05	0.73	110.40	72.30
85	6.00	3.30	69.20	99.80	0.19	1.04	0.01	3.50	18.00	54.40	10.70	8.20	22.60	-0.26	-0.03	-0.05	0.69	107.20	70.90
90	5.10	3.90	67.00	96.00	0.17	1.15	0.00	3.00	16.90	52.80	9.80	7.20	20.40	-0.23	-0.06	-0.04	0.65	103.30	69.00
95	3.50	4.80	63.80	90.30	0.16	1.31	-0.02	2.20	15.20	50.60	8.70	5.60	17.20	-0.19	-0.11	-0.03	0.58	98.30	66.10
AVG	9.70	1.30	78.70	117.20	0.24	0.58	0.04	5.60	22.90	62.60	15.10	11.60	32.90	-0.36	0.16	-0.07	0.88	129.90	80.60

2026 HYBRID PERCENTILE TABLE

%	CE	BW	WW	YW	ADG	DMI	\$GN	MCE	MILK	MWW	STAY	DOC	CW	YG	MARB	BF	REA	API	TI
1	21.50	-5.70	105.20	169.50	0.42	-0.10	0.15	12.10	34.70	81.40	22.70	19.60	72.60	-0.45	1.10	-0.10	1.24	190.03	108.50
2	20.30	-5.00	101.90	163.60	0.40	-0.01	0.14	11.50	33.40	79.20	21.70	18.70	68.10	-0.42	1.00	-0.09	1.17	183.50	105.10
3	19.60	-4.50	99.70	160.10	0.39	0.05	0.13	11.20	32.50	77.90	21.20	18.10	65.60	-0.40	0.93	-0.08	1.13	178.90	103.20
4	19.00	-4.20	98.10	157.00	0.38	0.09	0.12	10.90	31.90	76.90	20.70	17.60	63.40	-0.39	0.88	-0.08	1.09	175.60	101.60
5	18.50	-3.95	96.80	154.60	0.37	0.13	0.12	10.60	31.30	76.10	20.30	17.30	61.80	-0.38	0.85	-0.08	1.07	173.00	100.40
10	16.90	-3.00	92.30	146.80	0.35	0.26	0.10	9.80	29.50	73.20	19.10	16.20	56.30	-0.34	0.74	-0.07	0.97	164.40	96.20
15	15.80	-2.40	89.30	141.60	0.33	0.35	0.09	9.30	28.30	71.10	18.30	15.40	52.50	-0.31	0.67	-0.06	0.91	158.30	93.50
20	14.90	-1.90	87.00	137.50	0.32	0.42	0.09	8.80	27.40	69.50	17.70	14.90	49.70	-0.29	0.61	-0.06	0.87	153.60	91.30
25	14.20	-1.50	85.00	134.00	0.31	0.49	0.08	8.50	26.60	68.10	17.10	14.40	47.30	-0.27	0.56	-0.05	0.83	149.60	89.50
30	13.50	-1.20	83.30	130.80	0.30	0.55	0.07	8.10	26.00	66.80	16.60	14.00	45.10	-0.25	0.52	-0.05	0.80	146.10	87.90
35	12.97	-0.80	81.60	127.90	0.29	0.61	0.07	7.80	25.30	65.70	16.20	13.60	43.10	-0.23	0.48	-0.04	0.77	142.80	86.40
40	12.40	-0.58	80.10	125.20	0.28	0.67	0.06	7.50	24.80	64.70	15.70	13.20	41.30	-0.21	0.45	-0.04	0.74	139.70	84.90
45	11.90	-0.30	78.70	122.60	0.28	0.73	0.06	7.20	24.20	63.60	15.30	12.90	39.50	-0.20	0.41	-0.04	0.71	136.55	83.50
50	11.40	0.00	77.30	120.00	0.27	0.78	0.05	6.90	23.70	62.60	14.80	12.50	37.80	-0.18	0.38	-0.03	0.68	133.40	82.00
55	10.90	0.30	76.00	117.50	0.26	0.84	0.05	6.60	23.20	61.60	14.30	12.20	36.10	-0.17	0.35	-0.03	0.65	130.30	80.60
60	10.40	0.50	74.60	115.00	0.25	0.90	0.05	6.30	22.69	60.50	13.80	11.85	34.50	-0.15	0.32	-0.03	0.63	126.80	79.20
65	9.90	0.80	73.20	112.40	0.24	0.95	0.04	6.00	22.10	59.40	13.20	11.50	32.70	-0.13	0.29	-0.02	0.60	123.30	77.70
70	9.40	1.10	71.70	109.70	0.23	1.02	0.04	5.70	21.50	58.20	12.60	11.10	30.90	-0.11	0.26	-0.02	0.57	119.60	76.00
75	8.80	1.40	70.00	106.80	0.23	1.08	0.03	5.30	20.80	57.00	11.90	10.60	29.10	-0.09	0.23	-0.01	0.54	115.70	74.37
80	8.20	1.70	68.20	103.60	0.22	1.16	0.02	4.90	20.10	55.70	11.20	10.10	27.10	-0.07	0.19	-0.01	0.50	111.40	72.50
85	7.40	2.10	66.20	99.90	0.21	1.25	0.02	4.50	19.20	54.10	10.30	9.40	24.90	-0.04	0.15	0.00	0.46	106.60	70.50
90	6.50	2.60	63.40	95.60	0.19	1.36	0.01	3.90	18.10	52.20	9.20	8.50	22.10	-0.01	0.11	0.00	0.40	101.10	68.20
95	5.00	3.30	59.40	88.90	0.17	1.53	-0.01	3.10	16.40	49.20	7.80	6.90	17.80	0.04	0.04	0.02	0.31	93.50	64.80
AVG	11.40	0.00	77.30	120.00	0.27	0.78	0.05	6.90	23.70	62.60	14.80	12.50	37.80	-0.18	0.38	-0.03	0.68	133.40	82.00



WILKINSON FARMS SIMMENTALS
Terry and Cathy Schlenker Family
7649 49th Street Southeast
Montpelier, ND 58472-9722

WILKINSON FARMS SIMMENTALS

THURSDAY

FEBRUARY 19, 2026

1:00 PM CST AT THE C-B SALE FACILITY

4 MILES SOUTH OF THE RANCH, MONTEPELIER, NORTH DAKOTA

**BREEDING
FOR THE FUTURE** 

