

DRAKE

DRAKE SIMMENTAL *Bull and Female Sale*

1.30.26

Drake Sale Facility, Centerville, IA at 1:00 PM (CT)

*72 Simmental, SimAngus™ Age-Advantaged and Yearling Bulls
21 Spring Calving SimAngus™ Bred Heifers*

Welcome to the Sale.

While the bulls are usually the main attraction, we want to start this year with the focus on a female. People the world over know that cattlemen/farmers are some of the hardest working grinders in the world. A less well known fact, at least outside of rural areas, is that the women on the farm work just as hard, and often times more so, than the men. Carol Drake is perhaps the hardest working person any of us have ever seen-and she does it all with wit, good spirit and grit. She grew up taking care of her brothers and sisters and working at her grandparents' Clark's Markets in Mystic, Iowa, and then was promoted to taking care of Larry and their five kids and tribe of grandkids. For decades, when we worked cattle she was right there running cows and calves in and working by the chute. At chore time she carried buckets of feed, bags of protein and bales of hay. At calving time she wasn't just the bookkeeper, she was there helping, even in the dark of night. After all of this she would go back to the house, make sure the bills were paid and all the calves recorded, and cook a gourmet meal for which she has become famous, do all of our laundry and clean everything up. She was also the sole employee of the grounds keeping crew and kept the home place beautiful for all of us. When we think about it - it is truly amazing. Mom is fighting two forms of cancer right now-and doing it with her characteristic humor and toughness. Already diagnosed with breast cancer, when she was told she also had a cancerous lung, she laughed and exclaimed " it's a wonder I am alive at all!" She will be finishing up chemo treatments before sale time and then moving on to surgery and then radiation. The prognosis is good and her outlook is tremendous. We dedicate this sale to mom and mom, know that we all love you very much and are in awe of your strength!

Looking at the group of bulls and heifers in this year's sale, I was reminded of something dad said recently. He was talking about the fact that he had not taken action as quickly as he would have liked against a rust attacking the crop. He said "I got my thinkin' mixed up with my hopin' ". I don't know if he is the first to say it but I thought it makes for a great life motto- don't get your thinkin' mixed up with your hopin'. Don't just hope for calves to be born easier or to grow faster. Don't just hope for better milking mother cows or high marbling steers. Instead, take action, think, study the numbers and the animals on the hoof. Use the tools available. Evaluate these bulls and heifer with your eyes. When you have run them through all the paces we think you will be impressed.

The bulls are highlighted by fresh, new genetics and powerful mainstays. We are delighted to offer the first RVR Haymaker progeny in the country. Drake Simmental and Iron Creek purchased this bull for \$29,000 from River Creek Farms and he an almost unprecedented producer of growth. Haymaker is in the very elite top 1% for growth with a top 1% weaning weight EPD of 116, top 1% yearling weight EPD of 188.5 and top 1% average daily gain of .45. He combines this growth power with an outstanding look and extended front with good maternal and great carcass performance and a top 1% Terminal Index of 114.5. Check out his first sons and you will be looking for more. We will not be selling semen on Haymaker so this will be the only location to obtain his genetics.

We are also selling the first sons of the \$32,000 valued Iron Creek Hickok, a powerful Deadwood son owned with Ron Gilliland, super high growth sons of VAR Revelation, stout red bulls by Bieber Jumpstart and out of a full sister to Five Star Jackson, maternal brothers to Hook's Eagle, and the first, and some of the last, sons of the near-perfect Moxie cow. Sale highlights will include sons of Five Star Jackson, who is proving to be an outstanding producer of both commercial and seedstock bulls and beautiful, productive females. The bulls as a group are excellent phenotypically and carry outstanding genomically enhanced EPDs.

The females in the sale this year represent a quantum leap in genetic quality. As a group they contain the same great look as in past years, but if you look under the hide at their pedigrees and EPDs, you will find a unique group suited for any seedstock or commercial herd. The females are highlighted by daughters of Five Star Jackson, including the two lead off females, Ms M5 and K904M. Both are donor quality. The offering includes daughters of Matron of Honor and an elite growth red daughter of Bieber Jumpstart. We can't wait for you to see these females- everyone that has seen them has commented on their quality and depth.

We again look forward to seeing you or speaking with you prior to, and at, the sale. You are our lifeblood and we appreciate your interest and continued enthusiasm for the cattle industry. Fewer and fewer are willing to do the work and put in the hours it takes to feed our great nation, and we appreciate all of you that do so. Please call Larry, Mason or Flint with questions. Thank you.

The Drake Simmental Crew

"I know of no pursuit in which more zeal and important service can be rendered to any Country than by improving its agriculture-its breed of useful animals-and other branches of a husbandman's cares..."

- George Washington



Drake
Simmental

DRAKE SIMMENTAL

Bull and Female Sale

1.30.26

Drake Sale Facility, Centerville, IA at 1:00 PM (CT)

SALE LOCATION

24366 570th Street
Centerville, IA 52544

SALE DAY CONTACTS

Mason Harlan	641.895.5735
Flint Drake	563.580.1053
Larry Drake	641.895.9422
Marty Ropp	406.581.7835
Corey Wilkins	256.590.2487

AUCTIONEER

Tracy Harl 402.469.3852

MARKETING REPRESENTATIVES

Tom Rooney	515.491.6025
<i>Midwest Marketer</i>	
Mike Sorenson	641.745.7949
<i>Stockman</i>	
Jeremie Ruble	406.581.7940
Marshall Ruble	515.231.3198
Greg Miller	608.778.8785

SCHEDULE OF EVENTS

Thursday, January 29

All Day Cattle available for viewing and pasture tours

Friday, January 30

8:00 AM	Cattle available for viewing
11:30 AM	Lunch
1:00 PM	Sale Begins

VIDEO AUCTION

Video Sale format. Cattle will be displayed **DVAuction** outside the sale facility for live viewing. Sale broadcast on DVAuction.com. See page 20 for more information.

VIDEOS

Videos provided by Bradley J Hook.

TERMS AND CONDITIONS

Cash, personal or company check accepted unless prior arrangements have been made. All purchases are to be settled at the conclusion of the sale.

EPDS

All EPDs are the most current BOLT at the time of printing by IGS and the American Simmental Association.

SEMEN AND INTEREST

We will retain 1/2 semen interest on bulls selling under \$20,000 bid and 1/3 semen interest on bulls with a \$20,000 bid or higher.

DELIVERY AND BOARD

- Free delivery to farm or central points within 100-mile radius of the farm
- Free delivery for of gross purchases over \$30,000 to central points in the US
- \$200 per head delivery to central points in states bordering Iowa
- Bulls will be cared for free of charge until April 1st
- \$200 off bulls if they are picked up within one week from the sale

SALE VET

Animal Health Center, Dr. Dewey Nibe



TRUCKING

Please see page 17 for more information.

INSURANCE

Jamie Secondino Krieger 812.208.0956

While we are retaining possession of some sale bulls after the close of the sale, please understand that you own the bull upon conclusion of bidding on that bull. We suggest that you obtain insurance on any bull left in our possession to protect you against death or other loss.



Drake Simmental



Iron Creek Cattle Co.



Harlan Cattle Co.

DRAKE SIMMENTAL

Larry and Carol Drake

Mason 641.895.5735 Larry 641.895.9422

IRON CREEK CATTLE CO.

Flint 563.580.1053

HARLAN CATTLE CO.

Mason and Sara Harlan

Mason 641.895.5735



Marty Ropp 406-581-7835
Corey Wilkins 256-590-2487
Jared Murnin 406-321-1542

www.alliedgeneticresources.com

Improved Buying Confidence with Greater Genomic **ASSURANCE**

Access to more and better information has always been key to making wise decisions. The evolution and improvement of genetic evaluation tools too has given us an ever-clearer picture of the true genetic makeup of cattle and thus a better view of the value proposition. RightMate, powered by Top Genomics LLC is taking the evaluation of genetics and genomics one giant step further. By combining specific genomic information with the long-proven value of EPDs, this new advancement in technology improves our depth and precision when evaluating the actual ability to transmit value and profit.

The 3 Accreditation Logos below are designed to simplify bull selection and improve buyer confidence by more accurately describing the genetics offered and by reducing risk. What this means to you as a customer is a much greater assurance that you are getting both what you want and need from the genetics you purchase. What it means to your seedstock provider is access to RightMate technology that simply sets them apart from the rest of the industry.



ACCREDITED GENOMIC PLUS – For the majority of producers who simply need consistent and balanced genetic improvement, without genomic setbacks, G+ Accredited bulls should be on your list for premium purchase. These sires will absolutely move you forward for both cost reduction and income producing traits and substantially reduce risk when compared to all other evaluation programs. It's simple, the right genes are in these bulls to help secure a profitable future and they have great EPDs to match!



ACCREDITED CALVING EASE – Simply find bulls with the ACE logo for third party Accredited, secure Calving Ease bulls. Though we have had tools in the past to assist in choosing heifer bulls, we've never had one nearly this effective. The reduced risk that comes with this genomic certification will simply make your decisions easier and your heifer calving season more successful. Purchase special purpose ACE bulls with confidence. They will deliver consistent and predictable calving ease.



ACCREDITED TERMINAL MATE – Just like an ATM machine makes it simpler to access your cash, the ATM Logo highlights bulls accredited to generate extra cash income as soon as your next calf crop! These bulls are meant specifically to use only on mature cows and for the purpose of adding performance, pay weight and end product value to market.

A Note from the Sale Manager

Welcome to the 2026 Drake Bull and Female Sale in Centerville, IA. Once again, buyers will see a strong assortment of genetics that will prove to move your operation ahead! The Drake program has been marketing superior genetics for over 50 years. Buyers should expect incredible type, strong genetic value, and cattle that will thrive in the fescue belt. The program and genetics have stood the test of time, and their commitment to quality and service is affirmed by numerous repeat buyers who will fill the seats on sale day.



The 2026 sale is led by an exciting new sire in Haymaker. Scale crushing growth and superior carcass traits are the staples of this powerful sire group. Likewise, buyers will once again find a sizeable sire group of the highly proven Five Star Jackson sons. The Iron Creek bulls are led by some of the most powerful females to surface in the Simmental program. Flint's commitment to propagating these genetics through embryo transfer has allowed the Iron Creek program to flourish at a rapid pace. Finally, the replacement females represent the BEST set of bred females the programs have ever offered. These females will no doubt have a huge future ahead of them.

The Drake and Harlan families are some of the most pleasant to conduct business with that you will find. Commercial customers who are looking for genetics and service, these programs absolutely will check both boxes. An outfit with great cattle and a program that has stood the test of time is what you will find in Centerville, the last Friday of January. If we can be of any assistance to please do not hesitate to reach out to us.

Sincerely,
Marty Ropp, Corey Wilkins and Jared Murnin

Drake and Iron Creek Bull Guarantee

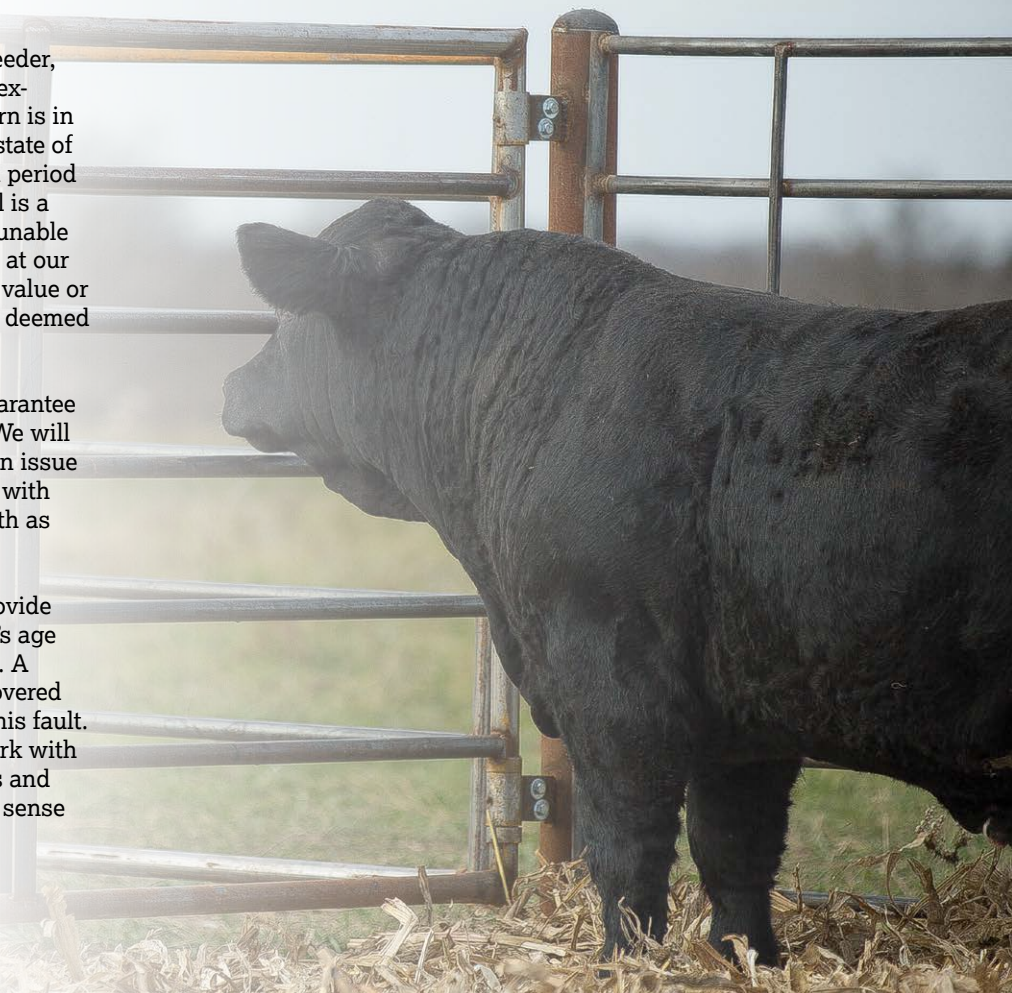
We guarantee every bull purchased in this sale to be a breeder (defined as the ability to settle healthy cows by the time the bull is 18 months of age) with the exception of:

- Bull calves sold at side of dam;
- Injury or disease occurring to the animal after time of sale;
- Negligence or willful misconduct on the part of the purchaser; or
- Bulls shown competitively after sale.

In the event an animal is claimed to be a non-breeder, the animal may be returned to us, at the buyer's expense, if in good physical condition and the return is in compliance with the health requirements of the state of Iowa. We shall be entitled to a six (6) month trial period following the return in which to prove the animal is a breeder. If at the end of such six months we are unable to establish that the animal is a breeder, we will, at our option, replace the animal with another of equal value or refund the purchase price. Either option shall be deemed full satisfaction and settlement.

All of the legal jargon aside, we view the bull guarantee as a good faith neighbor's agreement with you. We will act in good faith to determine if there was or is an issue with the bull and if there is we will make it right with you. In exchange we ask that you act in good faith as well.

Please manage the bulls with common sense-provide sufficient feed and shelter, keep in mind the bull's age when turning him out and monitor his condition. A young bull turned out with 50 cows in a snow covered pasture eventually won't breed cows-but it isn't his fault. We appreciate your business and will always work with you to do what is right. Please also work with us and most importantly care for the bulls in a common sense way. Thank you.





DRAKE BULL J207N Sells as Lot 1.



RVR HAYMAKER 414K Sire of Lot 1.

1	LOT 1 DRAKE BULL J207N							⚔GGP	
	Hetero Black II Homo Polled							1/2 SM 1/2 AN	
3/1/2025			J207N		ASA# 4584333				
ROSEDA POWERBALL23 F091				TJ PLATTE RIVER 370D					
RVR HAYMAKER 414K				DRAKE MISS D207J					
RC MISS ALL-AROUND 031C				DRAKE MISS 207D					
	CE	BW	WW	YW	ADG	MCE	MILK	MWW	STAY
EPD	14.8	0.2	91.9	145.6	0.34	7.6	23.1	69.3	17.6
Rank	25	55	15	15	15	40	60	25	25
	DOC	CW	YG	MARB	BF	REA	SAPI	\$TI	
EPD	15.0	44.5	0.10	0.57	0.012	0.23	156.9	94.0	
Rank	20	35	99	30	95	99	20	15	
	BW				ADJ. WW				
	81				704				

What a great bull to represent the RVR Haymaker414K offspring. From day one he has stopped us in our tracks and makes you take a second look. Massive in his overall makeup, great spring and depth of rib, and heavy muscled. He is so smooth through his shoulder, clean and sweet up through the neck, moves like a cat on excellent feet and legs. His dam is sired by TJ Platte River and out of a great Angus cow whose dam is the \$25,000 Hotz Elsa. He is not only good to look at, he is a pound making machine. WW 704, YW 1417 with both WW and YW EPDs in the Top 10%. Good CE in top 35%.



One of those bulls that brings everything together in one beautiful package. We will start with his own performance: BW 79 lbs, WW 848 lbs, ADG 5.32 lbs, and YW 1689 lbs. He is our Top WW bull, a new top yearling weight bull in our over 70 years in the business. Sired by the \$65,000 Five Star Jackson and dam by the great TJ Bonafide. Maternal Granddam a purebred Angus by Silveiras Style 9303. For sure one of our favorite cow families of all time. Now his EPDs: WW 105.5 - Top 1%, YW 161.6 - Top 3%, ADG Top 15%. Maternal EPDs: Milk Top 4%, MWW Top 1%, Sensible CE, excellent CW and Marb. Look N136N over and you will see a big volume, deep ribbed, heavy muscled bull. Excellent on his feet and legs and easy on the eyes. Raised by a two year old heifer with no creep feed. Think what he can do for your program.



DRAKE BULL L136N Sells as Lot 2.



FIVE STAR JACKSON J10 Sire of Lots 2, 3.

LOT 2 DRAKE BULL L136N

Homo Black || Homo Polled 5/8 SM 3/8 AN
 1/29/2025 L136N ASA# 4591199

HOOK'S FULL FIGURES 11F TJ BONAFIDE 647H
FIVE STAR JACKSON J10 **DRAKE MISS F136L**
 KBHR F316 DRAKE MISS 136F

	CE	BW	WW	YW	ADG	MCE	MILK	MWW	STAY
EPD	12.2	0.3	112.0	180.9	0.43	7.4	32.2	88.1	12.6
Rank	45	60	1	1	1	45	4	1	75

	DOC	CW	YG	MARB	BF	REA	\$API	\$TI
EPD	13.8	67.4	-0.11	0.60	-0.026	0.90	155.4	108.7
Rank	35	3	75	25	65	20	20	1

BW 79 ADJ. WW 848



LOT 3 DRAKE BULL L185N **GGP**

Homo Black || Homo Polled PB SM
 2/11/2025 L185N ASA# 4584342

HOOK'S FULL FIGURES 11F TJ BONAFIDE 647H
FIVE STAR JACKSON J10 **DRAKE MISS Z185L**
 KBHR F316 DRAKE MISS K185Z

	CE	BW	WW	YW	ADG	MCE	MILK	MWW	STAY
EPD	15.0	1.0	98.2	159.1	0.38	10.0	30.2	79.2	11.5
Rank	10	45	5	3	2	3	15	3	85

	DOC	CW	YG	MARB	BF	REA	\$API	\$TI
EPD	13.5	35.5	-0.29	0.44	-0.041	0.93	155.8	101.5
Rank	30	40	80	15	90	40	20	4

BW 74 ADJ. WW 743



DRAKE BULL L185N Sells as Lot 3.

A favorite Jackson son. A favorite because of his combination of phenotype, EPDs and Performance. He has that rare combination of great CE, Top 10% and great performance with WW, YW, and ADG all in the Top 10%. Also tops in his own performance with a WW of 743 and YW of 1589.

Love this blaze-faced bull's kind and class. Like all the Haymakers they look good and add lbs.



TJ 954G Dam of Lot 4.



DRAKE BULL G954N Sells as Lot 4.

LOT 4 DRAKE BULL G954N **GGP**

Hetero Black II Homo Polled 5/8 SM 3/8 AN
 2/4/2025 G954N ASA# 4584358

ROSEDA POWERBALL23 F091 TJ FROSTY 318E
RVR HAYMAKER 414K **TJ 954G**
 RC MISS ALL-AROUND 031C TJ 9D

	CE	BW	WW	YW	ADG	MCE	MILK	MWW	STAY
EPD	13.4	-0.1	86.4	133.4	0.29	8.0	24.7	68.0	15.8
Rank	35	50	25	30	40	35	45	30	45

	DOC	CW	YG	MARB	BF	REA	\$API	\$TI
EPD	14.0	49.0	-0.12	0.49	-0.015	0.76	146.4	90.0
Rank	35	25	70	40	75	35	35	25

BW ADJ. WW
84 **686**



LOT 5 IRON CREEK BELFAST J107N **GGP**

Homo Black II Homo Polled 5/8 SM 3/8 AN
 3/31/2025 J107N ASA# 4592105

ROSEDA POWERBALL23 F091 TJ PLATTE RIVER 370D
RVR HAYMAKER 414K **IRON CREEK RIVER GIRL 107J**
 RC MISS ALL-AROUND 031C TJ MISS 29B

	CE	BW	WW	YW	ADG	MCE	MILK	MWW	STAY
EPD	10.6	1.5	106.4	171.9	0.41	7.8	26.0	79.3	10.9
Rank	60	80	1	1	2	40	35	3	85

	DOC	CW	YG	MARB	BF	REA	\$API	\$TI
EPD	15.4	54.5	-0.12	0.66	-0.022	0.77	148.8	104.6
Rank	20	15	70	20	65	35	30	3

BW ADJ. WW
79 **ET**



IRON CREEK BELFAST J107N Sells as Lot 5.

Belfast represents that we hoped and aspired to by using Haymaker on our balanced cows. His mother is a beautiful Platte River daughter of the famous TJ Miss 29B donor we purchased for \$20,000. The evaluation of Belfast starts with his stunning physical appearance- power and elegance combined. A lot of "pretty" bulls don't have substance, but Belfast is a top 1% weaning weight (107) and 1% yearling weight (174) powerhouse. Yet he has top 2% maternal weaning weight and top 30-35% milk and maternal calving ease and top 20% marbling and 35% ribeye area. While his calving ease indicates he is a use-on-cows only bull, the numbers say the same of Haymaker and we have had virtually no issues with Haymaker births. An exciting opportunity to purchase a rare bull with breed leading growth and looks.



RVR HAYMAKER 414K Sire of Lots 4-6.

We received the River Creek Farms catalog a few years ago and I immediately stopped at the picture of Haymaker listed in the catalog. I studied his outcross pedigree and his numbers, along with his video, and immediately called dad. Dad saw what we saw. A bold, powerful beast with other-worldly growth. He was the perfect bull to put on our balance group of females to result in bulls with reasonable calving ease and unheard of growth, while maintaining strong maternal and carcass traits and a sound structure. Iron Creek and Drake Simmentals then teamed up to purchase Haymaker for \$29,000. The bulls in this sale are the first to be offered by him anywhere and are from natural service on a breeding group. We have never been more impressed with an initial set of calves from any bull we have ever used (and those of you that know mom and dad know they have produced and purchased some of the best bulls in the Simmental breed for the past 50 years). We will not be selling semen on Haymaker and his genetics will be available exclusively from Drake and Iron Creek. Haymaker is in the elite top 1% in the entire breed for weaning weight, yearling weight and average daily gain.

LOT 6 **DRAKE BULL F390N** **GGP**
 Hetero Black // Hetero Polled 5/8 SM 5/16 AN 1/32 HP 1/32 MX
 2/24/2025 F390N ASA# 4584335

ROSEDA POWERBALL23 F091 CNS DREAM ON L186
RVR HAYMAKER 414K **DRAKE MISS YD390F**
 RC MISS ALL-AROUND 031C DRAKE MISS Y390D

	CE	BW	WW	YW	ADG	MCE	MILK	MWW	STAY
EPD	7.3	5.7	107.4	168.3	0.38	6.0	20.0	74.2	12.0
Rank	90	99	1	2	5	70	85	10	80
	DOC	CW	YG	MARB	BF	REA	\$API	\$TI	
EPD	12.0	64.4	-0.14	0.52	-0.043	0.81	131.2	95.3	
Rank	60	4	65	35	35	30	55	15	
	BW				ADJ. WW				
	82				753				

These Haymakers all look alike. Classy, massive, pounds and sound. EPD WW Top 1%, YW Top 2%, and ADG Top 10%. F390N's own WW was 753 lbs with a great YW of 1528 lbs.



DRAKE BULL F390N Sells as Lot 6.



IRON CREEK RUTHLESS 9449M Sells as Lot 7.



IRON CREEK ZION H003M Sells as Lot 8.



IRON CREEK MOXIE D68K Dam of Lots 7-15.

We searched for years for the heir apparent to Matron of Honor as our lead donor female. From the moment we laid eyes on Moxie as a calf, we knew it could be her. She is moderate of frame and has as much mass and depth as we have ever had in a female, all while maintaining a perfect level hip and smooth shoulders with a long clean front one-third. Moxie is a daughter of the full sister to stud bull TJ 50K (we own her mother with Drake Simmental). We were greatly saddened when we lost Moxie to a freak accident (the kind of thing that only happens to the great ones- you never lose a scrub to a freak accident!) but were relieved that we had flushed her several times as a heifer and obtained a number of frozen embryos. When we saw this first group of those donor calves, we knew she indeed would have been our next lead donor. We crossed her with our \$32,000 valuation Poss Deadwood son, Iron Creek Hickok (owned with Ron Gililand) and received one of the best groups of ET full siblings, bulls and heifers, we have ever had. We will keep every female and are offering all of the bulls- the six lots below. We believe these bulls will be outstanding female producers while also creating seedstock and commercial bulls that will work in nearly any environment. The entire group of flush mates screams "easy keeping".

We have a caveat with respect to the average daily gain on these nine Moxie bulls. They were all part of a group of embryo transplant calves that arrived a bit late, were green upon arrival and that were only on test for 60 days before the final weigh in. However, what we noted is that this group of bulls averaged at least a pound per day growth MORE than the other bulls in the same group. We therefore felt the information on their growth is statistically relevant to your analysis, but keep in mind the above information when reviewing their gain- we want to be fair about all information we provide to you.

LOT 7 **IRON CREEK RUTHLESS 9449M** ♂GGP

Homo Black || Homo Polled 1/2 SM 1/2 AN
 12/15/2024 9449 ASA# 4547543

QUAKER HILL RAMPAGE 0A36 CLRS GUARDIAN 317G
V A R REVELATION 6299 **IRON CREEK MOXIE D68K**
 SANDPOINT BLACKBIRD 8809 TJ 20H

	CE	BW	WW	YW	ADG	MCE	MILK	MWW	STAY
EPD	14.4	-2.1	98.8	160.7	0.39	8.8	21.7	71.4	14.8
Rank	25	20	4	3	4	25	70	15	55
	DOC	CW	YG	MARB	BF	REA	SAPI	\$TI	
EPD	13.9	58.9	-0.18	0.56	-0.034	0.92	160.0	102.3	
Rank	35	10	55	30	50	15	15	4	

BW 64 ADJ. WW ET

A super attractive bull with excellent calving ease, growth and carcass traits - ideal for the commercial cattleman or woman selling by the pound. Gained 5.67 pounds per day on 60 day test.



LOT 8 **IRON CREEK ZION H003M** ♂GGP

Homo Black || Homo Polled 1/2 SM 1/2 AN
 12/15/2024 H003M ASA# 4547562

QUAKER HILL RAMPAGE 0A36 CLRS GUARDIAN 317G
V A R REVELATION 6299 **IRON CREEK MOXIE D68K**
 SANDPOINT BLACKBIRD 8809 TJ 20H

	CE	BW	WW	YW	ADG	MCE	MILK	MWW	STAY
EPD	13.1	-1.2	105.9	171.2	0.41	9.8	21.7	75.0	17.2
Rank	35	35	1	1	2	15	70	10	30
	DOC	CW	YG	MARB	BF	REA	SAPI	\$TI	
EPD	14.0	67.1	-0.20	0.71	-0.033	1.11	172.7	109.2	
Rank	35	3	45	15	50	4	10	1	

BW 79 ADJ. WW ET

Zion is another growth engine from the Moxie x Revelation cross. Top 1% weaning weight, yearling weight, and Terminal Index, top 2% average daily gain, 3% carcass weight, 5% API and Ribeye area, and 15% marbling, all with a manageable top 35% calving ease. Gained 5.8 pounds per day on 60 day test.



High Tide brings growth and more growth- top 2% weaning weight and 1% yearling weight and average daily gain in an attractive Sim-Angus package His strong carcass and Index numbers complement a reasonable calving ease-an outstanding commercial bull. Gained 6.73 pounds on 60 day test.



IRON CREEK HIGH TIDE E042M Sells as Lot 9.

LOT 9 IRON CREEK HIGH TIDE E042M ♂GGP

Homo Black // Homo Polled 1/2 SM 1/2 AN
12/23/2024 E042 ASA# 4547554

QUAKER HILL RAMPAGE 0A36 CLRS GUARDIAN 317G
V A R REVELATION 6299 IRON CREEK MOXIE D68K
SANDPOINT BLACKBIRD 8809 TJ 20H

	CE	BW	WW	YW	ADG	MCE	MILK	MWW	STAY
EPD	12.5	0.2	103.3	169.3	0.41	8.4	21.7	73.6	17.8
Rank	45	55	2	2	2	30	70	10	25
	DOC	CW	YG	MARB	BF	REA	\$API	\$TI	
EPD	11.6	73.0	-0.15	0.58	-0.036	1.01	162.5	102.5	
Rank	65	1	60	25	50	10	15	4	
	BW				ADI, WW				
	69				ET				



LOT 10 IRON CREEK THRESHOLD 4400M ♂GGP

Homo Black // Homo Polled 1/2 SM 1/2 AN
12/13/2024 4400 ASA# 4547540

QUAKER HILL RAMPAGE 0A36 CLRS GUARDIAN 317G
V A R REVELATION 6299 IRON CREEK MOXIE D68K
SANDPOINT BLACKBIRD 8809 TJ 20H

	CE	BW	WW	YW	ADG	MCE	MILK	MWW	STAY
EPD	13.5	-0.9	101.2	163.0	0.39	9.6	21.7	72.6	17.4
Rank	35	40	3	3	4	15	70	15	25
	DOC	CW	YG	MARB	BF	REA	\$API	\$TI	
EPD	14.8	70.2	-0.11	0.73	-0.009	1.04	171.4	106.0	
Rank	25	2	75	15	85	10	10	2	
	BW				ADI, WW				
	69				ET				



IRON CREEK THRESHOLD 4400M Sells as Lot 10.

Threshold is an absolute beast with, again, outstanding growth and carcass traits (top 2% carcass weight, and top 10% marbling and ribeye area) with stronger maternal traits and top 1/3 calving ease. An outstanding seedstock or commercial bull for the discriminating breeder. Gained 5 pounds per day on 60 day test.

Audacity brings an amazing combination of elite balanced numbers and elite looks to the offering. Top 25% calving ease with top 2-3% growth, 1% \$GN, top 3-20% in every maternal trait, 2% carcass weight, 3% marbling with elite top 1% All Purpose Index and Terminal Index. **RETAINING FALL BREEDING RIGHTS ON AUDACITY.** Buyer receives spring breeding rights and 50% semen rights. Gained 6.25 pounds per day on 60 day test.



IRON CREEK AUDACITY 21N Sells as Lot 11.



IRON CREEK MOXIE D68K Dam of Lots 7-15.

LOT 11 IRON CREEK AUDACITY 21N \times GGP
 Homo Black // Homo Polled 1/2 SM 1/2 AN
 2/20/2025 C021N ASA# 4547544

POSS DEADWOOD CLRS GUARDIAN 317G
IRON CREEK HICKOK C44K **IRON CREEK MOXIE D68K**
 G A R SURE FIRE 187 TJ 20H

	CE	BW	WW	YW	ADG	MCE	MILK	MWW	STAY
EPD	15.1	-1.9	99.6	162.0	0.39	8.7	28.2	78.5	21.1
Rank	20	25	4	3	4	25	20	3	4

	DOC	CW	YG	MARB	BF	REA	\$API	\$TI
EPD	12.8	71.8	0.06	0.97	0.016	0.74	194.7	112.4
Rank	50	2	99	3	95	40	1	1

BW 89 ADJ. WW ET



LOT 12 IRON CREEK BIGG SWIGG H012M \times GGP
 Homo Black // Homo Polled 1/2 SM 1/2 AN
 12/18/2024 H012M ASA# 4547563

POSS DEADWOOD CLRS GUARDIAN 317G
IRON CREEK HICKOK C44K **IRON CREEK MOXIE D68K**
 G A R SURE FIRE 187 TJ 20H

	CE	BW	WW	YW	ADG	MCE	MILK	MWW	STAY
EPD	14.4	0.1	107.6	179.9	0.45	8.4	28.2	81.9	17.8
Rank	25	55	1	1	1	30	20	1	25

	DOC	CW	YG	MARB	BF	REA	\$API	\$TI
EPD	12.8	70.5	0.10	0.93	0.024	0.67	185.4	113.9
Rank	50	2	99	4	99	55	2	1

BW 64 ADJ. WW ET



IRON CREEK BIGG SWIGG H012M Sells as Lot 12.

Bigg Swigg is perhaps the most intriguing bull in the flush and the deepest bull we have ever raised. Need some growth? Bigg Swigg is the growth king of the flush with elite top 1% weaning, yearling and average daily gain as well as top 1% \$GN, all with a top 30% calving ease, top 1-25% maternal traits and top 2% carcass weight and 3% marbling. This all adds up to a 184 All Purpose Index and a whopping 113, top 1% Terminal Index. This bull will raise massive weaning weights AND productive, high growth daughters. Gained 5.75 pounds per day on 60 day test.



IRON CREEK HICKOK C44K Sire of Lots 11-15.

LOT 13 IRON CREEK QUANTUM 3325N ♂GGP

Homo Black II Homo Polled 1/2 SM 1/2 AN
2/20/2025 3325 ASA# 4547539

POSS DEADWOOD CLRS GUARDIAN 317G
IRON CREEK HICKOK C44K **IRON CREEK MOXIE D68K**
G A R SURE FIRE 187 TJ 20H

	CE	BW	WW	YW	ADG	MCE	MILK	MWW	STAY
EPD	14.1	-1.1	98.6	161.7	0.39	7.5	28.2	77.4	19.5
Rank	30	35	4	3	4	45	20	4	10
	DOC	CW	YG	MARB	BF	REA	\$API	\$TI	
EPD	12.8	68.4	0.05	0.88	0.027	0.82	183.6	108.5	
Rank	50	2	99	5	99	30	3	2	
BW					ADJ. WW				
84					ET				

Quantum is as impressive of a physical specimen as we have seen-absolute mass and growth-top 3% growth EPDs, outstanding maternal traits, top 5% marbling, reasonable calving ease and top 2-3% All Purpose Index and Terminal Index. An elite bull with balance in numbers and on the hoof. A stud bull by any measure. Gained 6.67 pounds per day on the 60 day test.



IRON CREEK QUANTUM 3325N Sells as Lot 13.

LOT 14 IRON CREEK OLD TOWN ROAD E043 ♂GGP

Homo Black II Homo Polled 1/2 SM 1/2 AN
2/19/2025 E043 ASA# 4547555

POSS DEADWOOD CLRS GUARDIAN 317G
IRON CREEK HICKOK C44K **IRON CREEK MOXIE D68K**
G A R SURE FIRE 187 TJ 20H

	CE	BW	WW	YW	ADG	MCE	MILK	MWW	STAY
EPD	11.9	-0.3	99.4	159.7	0.38	7.3	28.2	78.4	20.1
Rank	50	50	4	4	5	45	20	3	10
	DOC	CW	YG	MARB	BF	REA	\$API	\$TI	
EPD	12.8	67.8	0.07	0.95	0.033	0.79	183.9	109.2	
Rank	50	3	99	3	99	30	2	1	
BW					ADJ. WW				
79					ET				

Old Town Road is another identical brother- look at his depth, hip power and front end! Top 3-4% growth, top 3-20% maternal traits, top 3% carcass weight and marbling, a top 2% 183 All Purpose Index and a top 1% 109 Terminal Index! Gained 5.73 pounds per day on 60 day test.



IRON CREEK OLD TOWN ROAD E043 Sells as Lot 14.

LOT 15 IRON CREEK TURNING POINT 12N ♂GGP

Homo Black II Homo Polled 1/2 SM 1/2 AN
2/19/2025 12N ASA# 4547557

POSS DEADWOOD CLRS GUARDIAN 317G
IRON CREEK HICKOK C44K **IRON CREEK MOXIE D68K**
G A R SURE FIRE 187 TJ 20H

	CE	BW	WW	YW	ADG	MCE	MILK	MWW	STAY
EPD	13.8	-1.0	94.8	153.7	0.37	7.7	28.2	76.1	19.7
Rank	30	35	10	10	10	40	20	10	10
	DOC	CW	YG	MARB	BF	REA	\$API	\$TI	
EPD	12.8	68.2	0.00	1.00	0.005	0.79	188.2	109.1	
Rank	50	2	95	3	90	30	2	1	
BW					ADJ. WW				
59					ET				

Ditto on Turning Point- top 2-10% on growth, 5-35% on all maternal traits, top 3% carcass weight and marbling, top 1/3 on calving ease with a 186 API and 109 TI. Elite consistency. Gained 4.93 pounds per day.



IRON CREEK TURNING POINT 12N Sells as Lot 15.

At eight years of age Matron remains youthful, maintains an excellent udder, breeds back on the first breeding each year and acts as the herd matron- keeping an eye on all the calves. She just doesn't miss. Sicario carries that excellent Matron look with outstanding growth (top 4-5%), maternal (top 2-25%) and carcass (top 1-10%) with a top 5% All Purpose Index and top 3% Terminal Index. An outstanding purebred bull for use on cows.



IRON CREEK SICARIO J037M Sells as Lot 16.



KBHR REVOLUTION H071 Sire of Lots 16, 17.

LOT 16 **IRON CREEK SICARIO J037M** **GGP**
 Homo Black // Homo Polled PB SM
 12/26/2024 J037 ASA# 4547571

HHS MR 847D		HOOK'S BEACON 56B							
KBHR REVOLUTION H071		KBHR MATRON OF HONOR F202							
WS MISS SUGAR C4		BAR CK MS X38 106Z							
CE	BW	WW	YW	ADG	MCE	MILK	MWW	STAY	
8.5	1.5	98.8	156.3	0.36	7.2	27.2	76.5	21.7	
EPD Rank	65	55	5	4	4	25	25	5	3
DOC	CW	YG	MARB	BF	REA	\$API	\$TI		
14.5	67.3	-0.41	0.56	-0.068	1.49	173.4	103.2		
EPD Rank	20	1	30	10	60	1	5	3	
BW		ADJ. WW							
94		ET							



LOT 17 **IRON CREEK PROWESS 3239M** **GGP**
 Homo Black // Homo Polled PB SM
 12/25/2024 J037 ASA# 4547535

HHS MR 847D		HOOK'S BEACON 56B							
KBHR REVOLUTION H071		KBHR MATRON OF HONOR F202							
WS MISS SUGAR C4		BAR CK MS X38 106Z							
CE	BW	WW	YW	ADG	MCE	MILK	MWW	STAY	
6.5	1.9	97.6	153.8	0.35	5.7	27.2	75.9	16.3	
EPD Rank	85	65	10	5	10	50	25	10	40
DOC	CW	YG	MARB	BF	REA	\$API	\$TI		
13.9	69.5	-0.36	0.68	-0.076	1.31	165.4	104.5		
EPD Rank	25	1	50	4	45	2	10	3	
BW		ADJ. WW							
84		ET							



KBHR MATRON OF HONOR F202 Dam of Lots 16, 17.

Prowess, for use on cows only, carries the same broad base of excellent EPDs as his brother and is especially strong on carcass with top 3% marbling and ribeye area with top 1% carcass weight.

Red Hook is a phenotypically pleasing and genetically powerful red Sim-Angus. His dam is a beautiful full sister to Five Star Jackson, the \$65,000 bull we purchased with Drake Simmental from Five Star. We love the Jumpstart calves and the combination with Jazzy really hit. Excellent growth and maternal traits with a top 2% docility EPD and top 35% calving ease. A seedstock or commercial bull to be proud of.



BIEBER JUMPSTART J137 Sire of Lots 18, 19.



IRON CREEK RED HOOK J040M Sells as Lot 18.

LOT 18 IRON CREEK RED HOOK J040M ♂GGP

Red II Homo Polled 1/2 SM 1/2 AR
12/20/2024 J040 ASA# 4547572

BIEBER CL ENERGIZE F121					HOOK'S FULL FIGURES 11F				
BIEBER JUMPSTART J137					FIVE STAR JAZZY J14				
BIEBER GALLEE 390G					KBHR F316				
CE	BW	WW	YW	ADG	MCE	MILK	MWW	STAY	
EPD 13.0	-0.8	92.1	154.7	0.39	8.7	33.4	79.4	13.9	
Rank 40	40	15	10	4	25	3	2	65	
DOC	CW	YG	MARB	BF	REA	\$API	\$TI		
EPD 19.0	36.3	-0.12	0.47	0.010	0.79	146.8	95.4		
Rank 2	55	70	40	95	30	35	15		
BW					ADI, WW				
58					ET				



LOT 19 IRON CREEK JAZZ MAN J043M ♂GGP

Red II Homo Polled 1/2 SM 1/2 AR
12/19/2024 43 ASA# 4547573

BIEBER CL ENERGIZE F121					HOOK'S FULL FIGURES 11F				
BIEBER JUMPSTART J137					FIVE STAR JAZZY J14				
BIEBER GALLEE 390G					KBHR F316				
CE	BW	WW	YW	ADG	MCE	MILK	MWW	STAY	
EPD 13.3	-2.2	92.1	153.0	0.38	9.2	33.4	79.4	15.9	
Rank 35	20	15	10	5	20	3	2	40	
DOC	CW	YG	MARB	BF	REA	\$API	\$TI		
EPD 16.1	30.0	-0.13	0.46	0.008	0.75	152.9	96.8		
Rank 15	75	70	40	90	40	25	10		
BW					ADI, WW				
53					ET				



FIVE STAR JAZZY J137 Dam of Lots 18, 19.

A full brother to Red Hook with exceptional, balanced EPDs. Again, top 5-10% growth, top 10-15% maternal traits and good calving ease. If you are looking for a red bull, these boys will work.



IRON CREEK RESPECT 8180M Sells as Lot 20.

LOT 20 IRON CREEK RESPECT 8180M PB SM

Black // Homo Polled 9/11/2024 8180 ASA# 4586803

HOOK'S FULL FIGURES 11F GW-WBF SUBSTANCE 820Y

FIVE STAR JACKSON J10 **HOOK'S CRYSTAL 1C**

KBHR F316 HOOK'S UNDERESTIMATED 6U

	CE	BW	WW	YW	ADG	MCE	MILK	MWW	STAY
EPD	11.1	0.7	89.2	139.0	0.31	8.7	26.6	71.1	17.0
Rank	40	40	20	20	20	10	25	20	35
	DOC	CW	YG	MARB	BF	REA	\$API	\$TI	
EPD	15.4	39.1	-0.32	0.66	-0.058	0.94	169.7	100.8	
Rank	15	30	70	4	75	35	10	5	

BW ADJ. WW

ET

Another Jackson x Crystal son with that combinations' trademark looks and numbers. Top 2-35% in calving ease, all growth traits, all maternal traits, marbling, API and TI. Elite balanced EPDs and Indexes, elite looks and an elite pedigree-Respect checks all the boxes.



IRON CREEK MR JACKSON C006M Sells as Lot 21.

LOT 21 IRON CREEK MR JACKSON C006M **GGP**

Hetero Black // Homo Polled PB SM

9/26/2024 C006M ASA# 4521804

HOOK'S FULL FIGURES 11F GW-WBF SUBSTANCE 820Y

FIVE STAR JACKSON J10 **HOOK'S CRYSTAL 1C**

KBHR F316 HOOK'S UNDERESTIMATED 6U

	CE	BW	WW	YW	ADG	MCE	MILK	MWW	STAY
EPD	9.1	2.5	96.3	157.7	0.38	7.1	26.7	74.7	15.3
Rank	60	75	10	3	2	30	25	10	50
	DOC	CW	YG	MARB	BF	REA	\$API	\$TI	
EPD	15.9	42.2	-0.25	0.59	-0.043	0.86	160.5	101.0	
Rank	10	25	90	10	90	55	15	5	

BW ADJ. WW

94 **ET**

Mr. Jackson is an absolute unit. Sired by the \$65,000 Jackson and out of Eagle's dam, this purebred will work for the commercial or seedstock herd. Top 1% \$GN, 2% average daily gain, 3% yearling weight and 10% weaning weight, with top 10-30% maternal traits and top 10% marbling, this power packed bull can boost all aspects of your operation. And as a fall bull, he will cover more cows sooner.



HOOK'S CRYSTAL 1C Dam of Lots 20-22.

LOT 22 IRON CREEK H040N **GGP**

Homo Black // Homo Polled PB SM

2/15/2025 040N ASA# 4547568

HOOK'S BEACON 56B GW-WBF SUBSTANCE 820Y

KBHR HOMESTEAD H016 **HOOK'S CRYSTAL 1C**

WS MISS SUGAR C4 HOOK'S UNDERESTIMATED 6U

	CE	BW	WW	YW	ADG	MCE	MILK	MWW	STAY
EPD	12.2	-0.8	92.2	145.2	0.33	6.6	20.7	66.7	18.0
Rank	30	20	15	10	10	35	70	35	25
	DOC	CW	YG	MARB	BF	REA	\$API	\$TI	
EPD	17.8	45.9	-0.19	0.80	-0.042	0.74	184.4	107.0	
Rank	3	15	95	2	90	80	2	2	

BW ADJ. WW

84 **ET**

A unique pedigree and EPDs. Sired by Homestead and out of the dam of Eagle, H040N shows outstanding calving ease, growth, and carcass numbers that result in a breed leading API of 184 (top 2%) and Terminal Index of 106 (top 2%).





RVR HAYMAKER 414K Sire of Lots 23-30.

RVR HAYMAKER 414K

A new sire group for long time Drake customers. Haymaker provides unprecedented genetic growth and will supply high valued terminal traits while keeping maternal traits in check. The sons of Haymaker will provide tremendous growth, and their indexes suggest they will add value to multiple facets of your operation. We are thrilled with the results of the first Haymaker progeny and expect him to be a staple of our breeding program for years to come!

LOT 23 **DRAKE BULL G27N** G+G
 Homo Black II Homo Polled 5/8 SM 3/8 AN
 1/24/2025 G27N ASA# 4584361

ROSEDA POWERBALL23 F091 TJ FRESH START 485D
RVR HAYMAKER 414K **TJ 27G**
 RC MISS ALL-AROUND 031C TJ 2D

	CE	BW	WW	YW	ADG	MCE	MILK	MWW	STAY
EPD	8.5	2.1	97.8	156.2	0.37	5.8	29.8	78.7	19.1
Rank	80	90	5	5	10	70	10	3	15
	DOC	CW	YG	MARB	BF	REA	\$API	\$TI	
EPD	11.9	44.2	0.03	0.75	-0.004	0.33	161.5	99.9	
Rank	65	35	95	10	85	95	15	10	
	BW				ADJ. WW				
	85				753				

Haymaker son with 9 EPD numbers in the Top 15% of the breed. With a WW of 753 lbs and YW of 1415 lbs, he will be sure to add pounds to your calves.



DRAKE BULL G27N Sells as Lot 23.

LOT 24 **IRON CREEK G959N** G+G
 Homo Black II Homo Polled 1/2 SM 1/2 AN
 2/11/2025 G959 ASA# 4592104

ROSEDA POWERBALL23 F091 CCR COWBOY CUT 5048Z
RVR HAYMAKER 414K **TJ 959G**
 RC MISS ALL-AROUND 031C TJ MISS FINAL ANSWER A5

	CE	BW	WW	YW	ADG	MCE	MILK	MWW	STAY
EPD	15.7	-0.6	88.5	138.0	0.31	8.0	22.9	67.4	24.5
Rank	20	45	20	20	30	35	60	30	1
	DOC	CW	YG	MARB	BF	REA	\$API	\$TI	
EPD	13.8	30.6	0.02	0.59	-0.016	0.10	173.1	93.7	
Rank	35	70	95	25	75	99	10	20	
	BW				ADJ. WW				
	80				753				

A Haymaker out of an excellent Cowboy Cut x Final Answer cow we purchased from Triangle J. Top 10-25% in calving ease, all growth traits, Stay, marbling, API and TI. Broad based excellence. An outstanding bull worthy of seedstock consideration.



IRON CREEK G959N Sells as Lot 24.



DRAKE BULL D104N Sells as Lot 25.

LOT 25 **DRAKE BULL D104N** **GGP**
 Hetero Black || Homo Polled 3/4 SM 1/4 AN
 2/11/2025 D104N ASA# 4584348

ROSEDA POWERBALL23 F091 SS/PRS TRACKIN TAIL 461A
RVR HAYMAKER 414K **DRAKE MISS Y104D**
 RC MISS ALL-AROUND 031C GONSIOR YADA YADA Y104

	CE	BW	WW	YW	ADG	MCE	MILK	MWW	STAY
EPD	10.1	3.9	96.3	151.6	0.35	6.2	19.4	67.6	11.9
Rank	65	99	10	10	15	65	85	30	80
	DOC	CW	YG	MARB	BF	REA	\$API	\$TI	
EPD	12.2	43.2	-0.19	0.31	-0.036	0.76	121.8	86.1	
Rank	60	35	50	65	50	35	70	40	
BW					ADJ. WW				
83					721				

Easy keeping kind of bull that will add pounds to your calves. Top 10% WW and YW EPDs. Top 15% ADG EPD. WW 721 lbs and YW 1466



DRAKE BULL D499N Sells as Lot 26.

LOT 26 **DRAKE BULL D499N** **GGP**
 Homo Black || Homo Polled 3/4 SM 1/4 AN
 3/15/2025 D499N ASA# 4584353

ROSEDA POWERBALL23 F091 SS/PRS TRACKIN TAIL 461A
RVR HAYMAKER 414K **DRAKE MISS Y499D**
 RC MISS ALL-AROUND 031C DRAKE MISS W499Y

	CE	BW	WW	YW	ADG	MCE	MILK	MWW	STAY
EPD	16.2	0.0	84.0	119.9	0.22	6.7	16.5	58.6	17.2
Rank	15	55	30	55	85	55	95	70	30
	DOC	CW	YG	MARB	BF	REA	\$API	\$TI	
EPD	12.8	22.6	-0.14	0.30	-0.026	0.40	139.1	82.5	
Rank	50	90	65	65	65	90	45	50	
BW					ADJ. WW				
78					649				

Good balance set of numbers with Ce in the top 25%. Typical Haymaker, massive in his makeup, deep ribbed, sound on good feet and legs.

LOT 27 **DRAKE BULL A365N** **GGP**
 Hetero Black || Hetero Polled 3/4 SM 1/4 AN
 2/5/2025 A365N ASA# 4584354

ROSEDA POWERBALL23 F091 YARDLEY HIGH REGARD W242
RVR HAYMAKER 414K **KGH MISS REGARDS 365A**
 RC MISS ALL-AROUND 031C KGH ANGIE 612S

	CE	BW	WW	YW	ADG	MCE	MILK	MWW	STAY
EPD	8.2	2.9	90.5	147.7	0.36	3.5	26.9	72.2	14.7
Rank	85	95	15	10	10	95	25	15	55
	DOC	CW	YG	MARB	BF	REA	\$API	\$TI	
EPD	11.4	45.8	-0.10	0.50	-0.031	0.52	135.6	89.0	
Rank	70	30	75	35	50	80	50	30	
BW					ADJ. WW				
85					727				

Look to all of these Haymaker bulls for high performing, pound making beef. Haymaker is in the very top of the breed with a WW EPD of 116 - Top 1%, YW EPD 188 - Top 1%, ADG EPD .45 - Top 1%. With a 727 lb. WW and a 1472 lb. YW and EPDs for WW Top 15%, YW Top 10%. A365N will sire performance.



LOT 28 **DRAKE BULL B404N** **GGP**
 Homo Black || Homo Polled 5/8 SM 3/8 AN
 2/4/2025 B404N ASA# 4584351

ROSEDA POWERBALL23 F091 DRAKE BULLY BOY
RVR HAYMAKER 414K **DRAKE MISS Y404B**
 RC MISS ALL-AROUND 031C DRAKE MISS W404Y

	CE	BW	WW	YW	ADG	MCE	MILK	MWW	STAY
EPD	12.8	0.8	78.6	119.0	0.25	5.8	21.9	61.2	14.4
Rank	40	70	50	55	65	70	70	60	60
	DOC	CW	YG	MARB	BF	REA	\$API	\$TI	
EPD	9.8	33.1	-0.23	0.47	-0.047	0.66	136.9	83.6	
Rank	85	65	40	40	35	55	50	50	
BW					ADJ. WW				
81					660				

Sire of B404N, RVR Haymaker is a unique bull with EPDs off the board: WW top 1%, YW top 1%, ADG Top 1%, \$GN Top 2%, MWW Top 1%, CW Top 4%, Marb. Top 4%, TI Top 1%, and an API of 164. Has the genetics to make them all look alike, perform alike and have excellent feet and legs. B404N is in that mode.

LOT **29** **IRON CREEK B3N** **GGP**
 Hetero Black || Homo Polled 1/2 SM 1/2 AN
 2/26/2025 B3N ASA# 4592106

ROSEDA POWERBALL23 F091 HOTZ BRILLIANCE 1251
RVR HAYMAKER 414K **DRAKE SUMMER SUNRISE**
 RC MISS ALL-AROUND 031C JSF DREAM BELL

	CE	BW	WW	YW	ADG	MCE	MILK	MWW	STAY
EPD	16.8	-0.1	86.7	134.3	0.30	6.7	22.4	65.5	14.9
Rank	15	50	25	30	35	55	65	40	55
	DOC	CW	YG	MARB	BF	REA	SAPI	STI	
EPD	12.2	34.2	0.01	0.58	0.000	0.29	153.1	91.9	
Rank	60	60	95	25	90	99	25	20	
	BW				ADJ. WW				
	80								

A great looking son of Haymaker and out of a beautiful SimAngus heifer we purchased from mom and dad for \$6,000 years ago. Great balance of calving ease, growth marbling and strong Indexes.



LOT **30** **HARLAN BULL A106N** **GGP**
 Hetero Black || Homo Polled 5/8 SM 3/8 AN
 2/13/2025 A106N ASA# 4583969

ROSEDA POWERBALL23 F091 SS SLEEP TIGHT 69U
RVR HAYMAKER 414K **HARLAN HIDDEN TRUTH**
 RC MISS ALL-AROUND 031C DRAKE MISS 106U

	CE	BW	WW	YW	ADG	MCE	MILK	MWW	STAY
EPD	17.6	-0.5	74.6	118.9	0.28	8.6	21.1	58.5	17.4
Rank	10	45	65	55	50	25	75	70	25
	DOC	CW	YG	MARB	BF	REA	SAPI	STI	
EPD	11.5	21.3	-0.04	0.71	0.000	0.27	163.1	88.8	
Rank	70	95	90	15	90	99	15	30	
	BW				ADJ. WW				
	76				629				

A Haymaker son with a nice balanced set of EPDs and a personal birth weight of 77 lbs.



Trucking Options

REB Transportation
 Rob Beeler
 (515) 360-1764

Tru Time Logistics
 Evan Bixby
 (319) 559-0167
 evan@trutimelogistics.com



FIVE STAR JACKSON J10

Jackson has quickly built a reputation for siring beautiful phenotype with great genetic value. His sons will once again be some of your favorites in the 2026 sale offering. The bulls offer a balance of genetic excellence from CE, growth, and profit indexes. Perhaps the best part of the Jackson line is the wonderful females. If you are looking to build your cow numbers we highly encourage you to take a strong look at the Jackson sons.



FIVE STAR JACKSON J10 Sire of Lots 31-40.



HARLAN BULL K26N Sells as Lot 31.

LOT 31 HARLAN BULL K26N **GGP**

Hetero Black II Homo Polled PB SM
 1/10/2025 K26N ASA# 4583960

HOOK'S FULL FIGURES 11F DRAKE BULL B99D
FIVE STAR JACKSON J10 **HARLAN MS D26K**
 KBHR F316 DRAKE MISS Z26D

	CE	BW	WW	YW	ADG	MCE	MILK	MWW	STAY
EPD	15.8	-0.6	68.8	99.2	0.19	9.3	27.9	62.3	13.8
Rank	10	20	90	90	90	10	20	55	65

	DOC	CW	YG	MARB	BF	REA	\$API	\$TI
EPD	10.9	25.0	-0.27	0.35	-0.038	0.75	144.1	82.0
Rank	65	80	85	25	95	75	35	50

BW **ADJ. WW**
77 **663**

A Jackson son that is in the top 10% for CE and MCE with a personal BW of 74Lbs.



HARLAN BULL 6N Sells as Lot 32.

LOT 32 HARLAN BULL 6N **GGP**

Hetero Black II Homo Polled 1/2 SM 3/8 AN 1/8 CS
 1/25/2025 6N ASA# 4583959

HOOK'S FULL FIGURES 11F

FIVE STAR JACKSON J10 **HARLAN MISS 6J**
 KBHR F316

	CE	BW	WW	YW	ADG	MCE	MILK	MWW	STAY
EPD	9.0	-1.2	82.3	126.9	0.28	9.3	27.3	68.3	8.0
Rank	75	35	35	40	50	20	25	30	95

	DOC	CW	YG	MARB	BF	REA	\$API	\$TI
EPD	15.3	45.4	-0.13	0.36	0.000	0.88	118.3	85.2
Rank	20	30	70	60	90	20	75	45

BW **ADJ. WW**
82 **762**

Here's a halfblood Jackson son that should add pounds to your calves while keeping that classic Jackson style. He had a 762 lb adj. weaning weight and a 1374 lb adj. yearling weight.

LOT 33 HARLAN BULL K69N **GGP**

Homo Black II Homo Polled PB SM
 1/10/2025 K69N ASA# 4583958

HOOK'S FULL FIGURES 11F IRON CREEK C23A1
FIVE STAR JACKSON J10 **HARLAN MS B69K**
 KBHR F316 DRAKE CLASSIC

	CE	BW	WW	YW	ADG	MCE	MILK	MWW	STAY
EPD	13.5	0.0	69.4	108.3	0.24	9.8	27.3	62.0	14.6
Rank	20	30	85	75	55	4	25	55	60
	DOC	CW	YG	MARB	BF	REA	\$API	\$TI	
EPD	15.1	31.8	-0.22	0.41	-0.034	0.71	147.0	83.3	
Rank	15	55	95	20	95	85	30	45	
BW					ADJ. WW				
79					607				

A Jackson son that is good fronted and smooth made. If you are looking to make some females I would think this guy could do just that for you.



HARLAN BULL K69N Sells as Lot 33.

LOT 34 HARLAN BULL K3N **GGP**

Hetero Black II Homo Polled PB SM
 1/11/2025 K3N ASA# 4583968

HOOK'S FULL FIGURES 11F TJ PLATTE RIVER 370D
FIVE STAR JACKSON J10 **IRON CREEK SUMMER SUCCESS**
 KBHR F316 DFC SUNRISE EXCITEMENT

	CE	BW	WW	YW	ADG	MCE	MILK	MWW	STAY
EPD	13.1	0.4	85.4	132.7	0.30	9.3	27.7	70.2	16.2
Rank	20	35	30	25	25	10	20	20	45
	DOC	CW	YG	MARB	BF	REA	\$API	\$TI	
EPD	17.9	42.5	-0.19	0.65	-0.025	0.83	168.5	98.4	
Rank	2	25	95	4	99	60	10	10	
BW					ADJ. WW				
73					685				

This bull is a result of that combo that seems to work almost every time Jackson on a Platte River daughter. He's made nice and has a good EPD profile too. He is in the top 20% for 11 traits with a personal BW of 70 lbs.



HARLAN BULL K3N Sells as Lot 34.

LOT 35 IRON CREEK K180N **GGP**

Hetero Black II Homo Polled 3/4 SM 1/4 AN
 3/17/2025 K180N ASA# 4592100

HOOK'S FULL FIGURES 11F CCR SPEAK NOW 6178G
FIVE STAR JACKSON J10 **IRON CREEK 558K**
 KBHR F316 TJ MISS 558E

	CE	BW	WW	YW	ADG	MCE	MILK	MWW	STAY
EPD	12.9	-0.2	93.0	146.9	0.34	13.0	30.3	76.7	11.3
Rank	40	50	10	15	15	1	10	5	85
	DOC	CW	YG	MARB	BF	REA	\$API	\$TI	
EPD	12.3	48.2	-0.26	0.50	-0.046	0.94	141.6	95.8	
Rank	55	25	30	35	35	15	40	15	
BW					ADJ. WW				
74					674				

K180N stems from a long history of great females tracing from a female purchased from Triangle J that traced back to the Angus female producer, Final Answer and a great CCR Speak Now daughter. Sired by Five Star Jackson, K180N is a very attractive bull with top 10% growth and very strong maternal traits, including top 1% maternal calving ease, 5% maternal weaning weight and top 10% milk.



IRON CREEK 20N Sells as Lot 36.

LOT 36 IRON CREEK 20N **GGP**

Homo Black II Homo Polled PB SM
 2/5/2025 20N ASA# 4592103

HOOK'S FULL FIGURES 11F BSUM MOST WANTED 117J
FIVE STAR JACKSON J10 **IRON CREEK FH20L**
 KBHR F316 IRON CREEK MS DEVONTA 202H

	CE	BW	WW	YW	ADG	MCE	MILK	MWW	STAY
EPD	15.5	-1.7	88.4	138.5	0.31	12.2	32.1	76.2	19.2
Rank	10	10	20	20	20	1	10	10	15
	DOC	CW	YG	MARB	BF	REA	\$API	\$TI	
EPD	15.3	35.2	-0.19	0.71	-0.031	0.70	185.6	104.8	
Rank	15	45	95	3	95	85	2	2	
BW					ADJ. WW				
72					672				

20N traces back to our Matron of Honor donor on the dam side and is sired by the \$65,000 Five Star Jackson. Talk about balanced EPDs! Fourteen trait and Index EPDs in the top 20% with fantastic calving ease, growth, maternal and carcass traits-what else is there?? All of this results in a top 2% API of 185 and top 2% Terminal Index of 105.





TJ 20H Maternal grandam of Lots 38, 42.



DRAKE BULL K158N Sells as Lot 38.

LOT **37** **DRAKE BULL K43N** **GGP**
 Hetero Black || Homo Polled PB SM
 3/18/2025 K43N ASA# 4584339

HOOK'S FULL FIGURES 11F TJ PLATTE RIVER 370D
FIVE STAR JACKSON J10 **DRAKE MISS A43K**
 KBHR F316 DRAKE MISS T43A

	CE	BW	WW	YW	ADG	MCE	MILK	MWW	STAY
EPD	14.2	-1.9	74.4	110.5	0.23	10.1	28.6	65.7	14.6
Rank	15	10	70	70	65	3	20	40	60
	DOC	CW	YG	MARB	BF	REA	\$API	\$TI	
EPD	16.3	36.5	-0.28	0.29	-0.057	0.76	145.9	85.7	
Rank	10	40	80	35	75	75	30	35	
	BW				ADJ. WW				
	74				738				

Calving ease and performance in this Jackson son. 738 lb WW, 1527 lb. projected YW. His calving ease EPD in the Top 15%, BW EPD in the Top 10%.

LOT **38** **DRAKE BULL K158N** **GGP**
 Hetero Black || Homo Polled PB SM
 3/25/2025 K158N ASA# 4584347

HOOK'S FULL FIGURES 11F CLRS GUARDIAN 317G
FIVE STAR JACKSON J10 **IRON CREEK INSPIRE D158K**
 KBHR F316 TJ 20H

	CE	BW	WW	YW	ADG	MCE	MILK	MWW	STAY
EPD	14.0	-0.2	95.5	139.0	0.27	7.6	26.7	74.3	18.2
Rank	15	25	10	20	40	20	25	10	25
	DOC	CW	YG	MARB	BF	REA	\$API	\$TI	
EPD	13.0	34.0	-0.26	0.33	-0.029	0.89	159.3	96.8	
Rank	35	45	85	25	99	45	15	10	
	BW				ADJ. WW				
	77				720				

A blaze-faced bull with the look, the pedigree and the numbers we like. Sired by Jackson and Grandam is the great TJ20H cow, full sister to TJ50K bull. WW of 720 lbs, projected YW 1448 lbs. EPDs CE Top 15%, WW 10%, YW 15%. Calving ease and pounds.



LOT **39** **IRON CREEK K232N** **GGP**
 Homo Black || Homo Polled PB SM
 3/28/2025 K232N ASA# 4592099

HOOK'S FULL FIGURES 11F W/C FORT KNOX 609F
FIVE STAR JACKSON J10 **IRON CREEK SWEET SUGAR F232K**
 KBHR F316 WS MISS SUGAR C4

	CE	BW	WW	YW	ADG	MCE	MILK	MWW	STAY
EPD	11.9	1.4	95.7	144.8	0.31	10.1	30.2	77.9	14.8
Rank	30	55	10	10	20	3	15	4	55
	DOC	CW	YG	MARB	BF	REA	\$API	\$TI	
EPD	13.6	50.2	-0.35	0.63	-0.055	1.19	165.2	103.4	
Rank	30	10	55	5	75	10	10	3	
	BW				ADJ. WW				
	79				788				

K232N is royal breeding on both sides of the pedigree. His dam is a Ft. Knox daughter out of the undisputed king maker of the Simmental breed, Miss Sugar C4. We purchased Sugar embryos from Chris Nicholson and went 4 for 4 with two bulls and two heifers. We sold one of the bulls, still use one and retained both heifers. And are they producers. Crossed with the \$65,000 Five Star Jackson, Sweet Sugar produced this outstanding commercial bull with broad based genetic excellence.



LOT **40** **DRAKE BULL K27N** **GGP**
 Hetero Black || Homo Polled PB SM
 3/28/2025 K27N ASA# 4584334

HOOK'S FULL FIGURES 11F TJ ROUGH COUNTRY 219G
FIVE STAR JACKSON J10 **DRAKE MISS G27K**
 KBHR F316 TJ 27G

	CE	BW	WW	YW	ADG	MCE	MILK	MWW	STAY
EPD	9.9	2.1	87.4	133.1	0.29	9.0	33.1	76.7	11.6
Rank	50	70	25	25	30	10	5	5	85
	DOC	CW	YG	MARB	BF	REA	\$API	\$TI	
EPD	16.3	47.7	-0.10	0.55	-0.016	0.67	145.9	94.3	
Rank	10	15	99	10	99	90	30	15	
	BW				ADJ. WW				
	75				788				

High performing Jackson son. He had a 788 lb WW with a 1464 lb projected YW. If you keep your own heifers look at his maternal EPDs. MCE in top 10%, MM Top 5%, and MWW Top 5%.



71N combines the best of our genetics on both sides of his pedigree. Sired by the \$65,000 Jackson, 71N is out of an Eagle daughter of the Montana Blackbird donor. A really nice bull with balanced EPDs across the board showing strength in all production areas.



IRON CREEK 71N Sells as Lot 41.

LOT 41 IRON CREEK 71N

Homo Black || Homo Polled 5/8 SM 3/8 AN
 3/1/2025 71N ASA# 4592102

HOOK'S FULL FIGURES 11F HOOK'S EAGLE 6E
FIVE STAR JACKSON J10 IRON CREEK SWAG D71K
 KBHR F316 MONTANA BLACKBIRD 7250

	CE	BW	WW	YW	ADG	MCE	MILK	MWW	STAY
EPD	12.2	-1.3	87.1	136.3	0.31	7.5	28.1	71.9	16.3
Rank	45	30	25	25	30	45	20	15	40

	DOC	CW	YG	MARB	BF	REA	\$API	\$TI
EPD	17.4	48.1	-0.20	0.77	-0.037	0.83	164.6	99.6
Rank	5	25	45	10	50	25	15	10

BW 80 ADJ. WW



LOT 42 DRAKE IC L20N ♂GGP

Homo Black || Homo Polled PB SM
 2/24/2025 L20N ASA# 4583896

HOOK'S GALILEO 210G FIVE STAR JACKSON J10
HA KNOCKOUT 2K DRAKE IC H20L
 HA HOPE 004H TJ 20H

	CE	BW	WW	YW	ADG	MCE	MILK	MWW	STAY
EPD	13.4	-0.6	86.0	131.3	0.28	9.1	33.2	76.1	20.9
Rank	20	20	30	30	35	10	5	10	5

	DOC	CW	YG	MARB	BF	REA	\$API	\$TI
EPD	14.7	26.3	-0.23	0.64	-0.037	0.65	179.3	100.2
Rank	20	75	90	5	95	90	3	5

BW 79 ADJ. WW 801



DRAKE IC L20N Sells as Lot 42.

Don't miss this guy- his dam is a stunning Jackson daughter out of our full sister to the stud bull TJ 50K and is sired by the Drake Simmental female maker, HA Knockout. An outstanding phenotype with superior balance and strength in his genomically enhanced EPDs-top 20% calving ease, top 25% birthweight, weaning weight, yearling weight, and average daily gain. Knockout transmitted his maternal strength as L20N is in the top 5% for Stay and Milk and 10% for maternal calving ease and maternal weaning weight with a top 15% docility. His numbers round out with a top 4% marbling, 3% All Purpose Index of almost 180 and a top 5% Terminal Index. This seedstock quality bull will work for virtually any breeder to produce outstanding females and animals that will perform in the feedyard and on the rail. Owned by Drake Simmental and Iron Creek.

HA KNOCKOUT 2K

Big spread genetics is what the Knockout sons will provide to potential bull buyers. The cattle come light and explode thereafter for growth. The bulls combination of STAY and marbling places them in rare air amongst purebred bulls in the IGS database. Likewise, if you need to improve docility the Knockouts will be perfect candidates.



HA KNOCKOUT 2K Sire of Lots 43-48.



IRON CREEK L107N Sells as Lot 43.

LOT 43 IRON CREEK L107N **GGP**
 Homo Black II Homo Polled 1/2 SM 1/2 CS
 2/15/2025 L107N ASA# 4592098

HOOK'S GALILEO 210G FIVE STAR JACKSON J10
HA KNOCKOUT 2K **J107L**
 HA HOPE 004H IRON CREEK RIVER GIRL 107J

	CE	BW	WW	YW	ADG	MCE	MILK	MWW	STAY
EPD	9.5	1.1	98.5	149.1	0.32	6.8	31.7	80.9	14.0
Rank	70	75	4	10	25	55	5	2	60
	DOC	CW	YG	MARB	BF	REA	\$API	\$TI	
EPD	15.9	47.6	-0.33	0.69	-0.064	1.02	152.4	102.0	
Rank	15	25	15	15	15	10	25	4	
		BW		ADJ. WW					
		93							

L107N comes from the same cow family as the Belfast bull selling as Lot __. Out of a beautiful Jackson daughter and the balanced EPD king, HA Knockout, this attractive bull has outstanding growth, maternal and carcass EPDs. Again, a bull that represents what we are trying to do- raise attractive, functional cattle that are in the top 25% of the key EPD traits and indexes.



IRON CREEK L180N Sells as Lot 44.

LOT 44 IRON CREEK L180N **GGP**
 Homo Black II Homo Polled 1/2 SM 13/32 CS 3/32 AN
 2/15/2025 L180N ASA# 4592101

HOOK'S GALILEO 210G FIVE STAR JACKSON J10
HA KNOCKOUT 2K **J558L**
 HA HOPE 004H E558J

	CE	BW	WW	YW	ADG	MCE	MILK	MWW	STAY
EPD	12.7	-0.9	93.2	141.9	0.30	9.4	32.2	78.7	13.0
Rank	40	40	10	15	35	15	4	3	70
	DOC	CW	YG	MARB	BF	REA	\$API	\$TI	
EPD	16.9	53.9	-0.22	0.64	-0.050	0.86	152.4	99.7	
Rank	10	15	40	20	35	20	25	10	
		BW		ADJ. WW					
		68							

L180N stems from the same cow family as K180N and sired by the elite balanced HA Knockout bull dad purchased at, appropriately enough, the Bred for Balance Sale, a few years ago. As with all members of this cow family, L180N is attractive made and carries great EPDs for growth, maternal (top 2% maternal weaning, 4% milk and 15% maternal calving ease), docility and carcass traits (top 15-20% in carcass weight, marbling and ribeye area). A bull that will sire great females as well as performance bulls and steers.





DRAKE IC J93N Sells as Lot 45.



LCDR MS JETTA 93J Dam of Lot 45.

LOT 45 **DRAKE IC J93N** **GGP**

Hetero Black // Homo Polled PB SM
3/5/2025 J93N ASA# 4583897

HOOK'S GALILEO 210G W/C FORT KNOX 609F
HA KNOCKOUT 2K **LCDR MS JETTA 93J**
HA HOPE 004H WS MISS SUGAR C4

	CE	BW	WW	YW	ADG	MCE	MILK	MWW	STAY
EPD	15.6	-1.7	77.2	120.2	0.27	8.4	29.3	67.9	17.7
Rank	10	10	60	45	40	15	15	30	25
	DOC	CW	YG	MARB	BF	REA	\$API	\$TI	
EPD	16.6	34.0	-0.22	0.74	-0.046	0.64	179.8	98.7	
Rank	5	45	95	2	90	3	10		
BW		ADJ. WW							
73		759							

If you are looking for a bull to produce some great females, we believe J93N is worth your attention. His dam is a direct daughter of the great WS Miss sugar C4 and his sire is Larry's great female producer, HA Knockout. Very strong maternal EPDs of top 15% maternal calving ease and milk, 5% docility with top 10% calving ease, 2% marbling and a top 3% All Purpose Index of 181 and top 10% Terminal Index. He will produce profitable cattle.

LOT 46 **DRAKE BULL H50N** **GGP**

Homo Black // Homo Polled PB SM
3/16/2025 H50N ASA# 4584346

HOOK'S GALILEO 210G HOOK'S EQUINOX 15E
HA KNOCKOUT 2K **DRAKE MISS B50H**
HA HOPE 004H DRAKE MISS U50B

	CE	BW	WW	YW	ADG	MCE	MILK	MWW	STAY
EPD	13.7	-1.9	72.3	105.4	0.21	7.0	28.0	64.1	16.6
Rank	15	10	80	80	75	30	20	45	40
	DOC	CW	YG	MARB	BF	REA	\$API	\$TI	
EPD	14.9	34.9	-0.37	0.44	-0.096	0.74	156.6	88.3	
Rank	15	45	45	15	15	80	20	30	
BW		ADJ. WW							
69		716							

Knockout son with a balanced set of numbers. Top 20% CE, BW Top 10% and if you like beef he is in the Top 15% for marb. and back fat. API 157- in the top 15%.



LOT 47 **DRAKE BULL E76N** **GGP**

Homo Black // Homo Polled PB SM
3/18/2025 E76N ASA# 4584355

HOOK'S GALILEO 210G CCR COWBOY CUT 5048Z
HA KNOCKOUT 2K **DRAKE MISS B76E**
HA HOPE 004H DRAKE RIGHT NOW

	CE	BW	WW	YW	ADG	MCE	MILK	MWW	STAY
EPD	11.6	-0.1	84.6	131.1	0.29	7.2	28.3	70.5	15.0
Rank	35	30	30	30	30	25	20	20	55
	DOC	CW	YG	MARB	BF	REA	\$API	\$TI	
EPD	20.7	41.2	-0.39	0.45	-0.109	0.79	154.6	94.2	
Rank	1	25	40	15	10	70	20	15	
BW		ADJ. WW							
79		704							

Good Knockout son that can do it all. Fifteen numbers in the Top 30% of breed- calving ease, maternal, performance and carcass.



LOT 48 **HARLAN BULL F106N** **GGP**

Homo Black // Homo Polled PB SM
1/21/2025 F106N ASA# 4583962

HOOK'S GALILEO 210G W/C EXECUTIVE ORDER 8543B
HA KNOCKOUT 2K **HARLAN MS D106F**
HA HOPE 004H DRAKE MISS B106D

	CE	BW	WW	YW	ADG	MCE	MILK	MWW	STAY
EPD	11.3	0.5	84.8	131.2	0.29	7.6	27.2	69.5	15.2
Rank	35	40	30	30	30	20	25	25	55
	DOC	CW	YG	MARB	BF	REA	\$API	\$TI	
EPD	15.4	29.9	-0.37	0.56	-0.080	0.80	159.3	96.0	
Rank	15	60	45	10	45	65	15	10	
BW		ADJ. WW							
83		722							

He's a bigger framed Knockout son that is in the top 25% for WW and top 20% for YW EPDs. He is also in the top 10% for marbling. This bull's calves should grow and grid well.





HARLAN BULL K76N Sells as Lot 49.

LOT 49 HARLAN BULL K76N **GGP**

Homo Black II Homo Polled 3/4 SM 1/4 AN
 1/18/2025 K76N ASA# 4583963

WS PROCLAMATION E202 HOOK'S EAGLE 6E
CCR SPEAK NOW 6178G **HARLAN MS H76K**
 CCR MS 2138 BOLDR 6028D HARLAN KAREN D76H

CE	BW	WW	YW	ADG	MCE	MILK	MWW	STAY	
14.3	-0.7	92.3	141.2	0.31	8.5	18.3	64.4	11.9	
EPD Rank	25	40	15	20	30	30	90	45	80
DOC	CW	YG	MARB	BF	REA	\$API	\$TI		
16.0	48.3	-0.30	0.25	-0.046	1.07	130.4	88.4		
EPD Rank	15	25	20	75	35	5	60	30	
BW				ADJ. WW					
71				643					

Here is a Speaknow son out of an Eagle cow. If you are looking for a bull to add some rib to a set of cows this guy should do just that. He is in the top 10% for WW, 15% for YW EPDs and top 4% for marbling.



HARLAN BULL C44N Sells as Lot 50.

LOT 50 HARLAN BULL C44N **GGP**

Homo Black II Homo Polled 3/4 SM 1/4 AN
 2/1/2025 C44N ASA# 4583956

WS PROCLAMATION E202 SS/PRS CHASIN TAIL 18A
CCR SPEAK NOW 6178G **DFC MISS Y44C**
 CCR MS 2138 BOLDR 6028D SR MS Y44

CE	BW	WW	YW	ADG	MCE	MILK	MWW	STAY	
15.9	-0.7	79.8	117.7	0.24	8.5	24.1	63.9	15.8	
EPD Rank	15	40	45	60	75	30	50	45	45
DOC	CW	YG	MARB	BF	REA	\$API	\$TI		
11.2	22.7	-0.17	0.12	-0.012	0.61	126.7	77.6		
EPD Rank	70	90	55	90	75	65	65	70	
BW				ADJ. WW					
77				732					

A Speaknow son with a balanced set of EPDs. He has a 732lb adj. weaning weight and a 1339 lb adj yearling weight.



HARLAN BULL J26N Sells as Lot 51.

LOT 51 HARLAN BULL J26N **GGP**

Homo Black II Homo Polled PB SM
 2/23/2025 J26N ASA# 4583967

WS PROCLAMATION E202 TJ ROUGH COUNTRY 219G
CCR SPEAK NOW 6178G **HARLAN FANCY LIKE G26J**
 CCR MS 2138 BOLDR 6028D HARLAN COW D26G

CE	BW	WW	YW	ADG	MCE	MILK	MWW	STAY	
9.7	1.9	84.8	134.4	0.31	6.3	23.2	65.6	14.4	
EPD Rank	55	65	30	25	20	40	50	40	60
DOC	CW	YG	MARB	BF	REA	\$API	\$TI		
18.0	39.6	-0.15	0.27	-0.014	0.74	136.4	85.5		
EPD Rank	2	30	99	35	99	80	45	35	
BW				ADJ. WW					
86				754					

A big, stout Speaknow son with good growth EPDs as well as a personal adjusted yearling weight of 1431 lbs.



LOT 52 IRON CREEK 614M

Black II Homo Polled 5/8 SM 3/8 AN
8/8/2024 614M ASA# 4583741

HOOK'S BLACK HAWK 50B HOOK'S EAGLE 6E
HOOK'S EAGLE 6E IRON CREEK GIMME THAT GIRL 614
HOOK'S CRYSTAL 1C MONTANA BLACKBIRD 7250

	CE	BW	WW	YW	ADG	MCE	MILK	MWW	STAY
EPD	12.9	-1.7	97.5	154.2	0.35	5.9	20.4	69.4	14.8
Rank	40	25	5	10	15	70	80	25	55
	DOC	CW	YG	MARB	BF	REA	\$API	\$TI	
EPD	16.8	49.5	-0.25	0.53	-0.027	1.08	154.5	100.0	
Rank	10	25	30	35	65	4	20	10	
BW					ADJ. WW				

614M is sneaky good. He is a double bred Eagle out of a daughter of our Montana Blackbird donor with outstanding growth and carcass traits. His mother died when he was a calf and he fended for himself all winter. He is tough and ready to go to work.



LOT 53 DRAKE BULL K5M **GGP**

Homo Black II Homo Polled 3/4 SM 1/4 AN
11/28/2024 K5M ASA# 4584363

POSS DEADWOOD HOOK'S EAGLE 6E
I.C.D. BILLY SUNDAY DRAKE MISS G5K
TJ 20H TJ 5G

	CE	BW	WW	YW	ADG	MCE	MILK	MWW	STAY
EPD	14.0	-1.2	83.0	121.6	0.24	6.1	27.0	68.7	16.3
Rank	30	35	35	50	75	65	25	25	40
	DOC	CW	YG	MARB	BF	REA	\$API	\$TI	
EPD	16.8	40.3	-0.06	0.59	0.010	0.66	152.3	91.2	
Rank	10	45	85	25	95	55	25	25	
BW					ADJ. WW				
78					666				

Love this bull and the cow family he comes from. His dam is an Eagle daughter out of TJ Platte River's dam. K5M is a picture of the kind we like. Huge volume, sound on the move and with that easy-keeping look. A balanced set of numbers with 13 of them in the top 40%. We believe his sire, Billy Sunday, will have a big impact in the coming years.



DRAKE BULL K5M Sells as Lot 53.

LOT 54 DRAKE BULL K21M **GGP**

Hetero Black II Homo Polled 5/8 SM 3/8 AN
12/27/2024 K21M ASA# 4584359

POSS DEADWOOD TJ HANDYMAN 436G
I.C.D. BILLY SUNDAY DRAKE MISS YH21K
TJ 20H DRAKE MISS Y21H

	CE	BW	WW	YW	ADG	MCE	MILK	MWW	STAY
EPD	13.0	-1.0	89.4	139.5	0.31	6.8	28.6	73.6	11.7
Rank	40	35	20	20	30	55	15	10	80
	DOC	CW	YG	MARB	BF	REA	\$API	\$TI	
EPD	15.3	36.4	-0.09	0.62	-0.023	0.47	147.6	96.4	
Rank	20	55	80	20	65	85	30	15	
BW					ADJ. WW				
83					727				

A Billy Sunday bull. You say "Who's Billy Sunday?" You will know this time next year as we used him heavily based on what we have seen this year. K21M has the look, and the numbers of a great herd sire. Nine of his EPDs are in the Top 20%. WW and YW both in the Top 15%. His WW is 727, YW 1407.



DRAKE BULL K21M Sells as Lot 54.



HARLAN BULL B69N2 Sells as Lot 55.

LOT 55 HARLAN BULL B69N2 **GGP**

Hetero Black II Homo Polled PB SM
 1/15/2025 B69N2 ASA# 4583961

WS PROCLAMATION E202 DRAKE BULLY BOY
LBR5 GENESIS G69 **DRAKE CLASSIC**
 LBR DIANA D69 DRAKE MISS 69Y

	CE	BW	WW	YW	ADG	MCE	MILK	MWW	STAY
EPD	9.5	1.1	76.5	113.7	0.23	4.8	22.0	60.2	17.2
Rank	55	50	60	60	65	70	60	65	30

	DOC	CW	YG	MARB	BF	REA	\$API	\$TI
EPD	9.8	44.2	-0.22	0.57	-0.035	0.88	155.0	88.5
Rank	75	20	95	10	95	50	20	30

BW ADJ. WW
64 **699**

This deep bodied smooth shouldered Genesis son has the class as well as a solid set of EPDs.



HARLAN BULL B811N Sells as Lot 56.

LOT 56 HARLAN BULL B811N **GGP**

Homo Black II Homo Polled PB SM
 1/27/2025 B811N ASA# 4583964

WS PROCLAMATION E202 ELM-MOUND/GS STANDSALONE
LBR5 GENESIS G69 **DFC MISS X811B**
 LBR DIANA D69 JARRS MISS OLIVIA 811X

	CE	BW	WW	YW	ADG	MCE	MILK	MWW	STAY
EPD	10.5	1.3	85.5	130.3	0.28	7.5	20.1	62.7	14.7
Rank	45	55	30	30	35	25	75	55	60

	DOC	CW	YG	MARB	BF	REA	\$API	\$TI
EPD	8.6	40.2	-0.30	0.60	-0.061	0.85	157.5	95.2
Rank	85	30	75	10	60	55	20	15

BW ADJ. WW
84 **651**

A little bigger framed Genesis Son with a balanced set of EPDs and a personal Adj. yearling weight of 1449 lbs.



DRAKE BULL K76N Sells as Lot 57.

LOT 57 DRAKE BULL K76N **GGP**

Homo Black II Homo Polled 1/2 SM 1/2 AN
 3/8/2025 K76N ASA# 4584340

POSS MAVERICK TJ PLATTE RIVER 370D
POSS DEADWOOD **DRAKE MISS E76K**
 POSS ELLUNAMERE 399 DRAKE MISS B76E

	CE	BW	WW	YW	ADG	MCE	MILK	MWW	STAY
EPD	6.9	1.6	95.3	153.4	0.36	6.8	23.9	71.4	10.4
Rank	90	80	10	10	10	55	50	15	90

	DOC	CW	YG	MARB	BF	REA	\$API	\$TI
EPD	17.8	68.2	-0.12	0.86	-0.040	0.82	148.8	101.7
Rank	4	2	70	5	50	30	30	5

BW ADJ. WW
83 **730**

A full brother in blood to the \$32,000 Drake Power Cat. Now in service at Begger's Diamond V Ranch. A powerful blaze-faced bull with a 730 WW and 1479 YW. A growth bull with EPDs in Top 10% for WW, YW and ADG.



The full brother to the \$32,000 Drake Power Cat. With 12 EPD numbers in the top 30% and WW of 720 and a YW of 1388 he will do the job. Remember, none of these bulls ever had creep feed.



J76L Full brother to Lot 58.



DRAKE BULL J76N Sells as Lot 58.

LOT 58 DRAKE BULL J76N **GGP**

Homo Black II Homo Polled 1/2 SM 1/2 AN
 3/12/2025 J76N ASA# 4584362

POSS MAVERICK TJ PLATTE RIVER 370D
POSS DEADWOOD **DRAKE MISS E76J**
 POSS ELLUNAMERE 399 DRAKE MISS B76E

	CE	BW	WW	YW	ADG	MCE	MILK	MWW	STAY
EPD	12.6	-0.8	88.0	136.9	0.31	8.4	25.1	69.0	14.3
Rank	40	40	20	25	30	30	40	25	60

	DOC	CW	YG	MARB	BF	REA	\$API	\$TI
EPD	16.3	55.6	-0.04	0.74	-0.009	0.65	157.5	97.6
Rank	10	15	90	15	85	55	20	10

BW ADJ. WW
74 **720**



LOT 59 IRON CREEK CEASAR 95N **GGP**

Homo Black II Homo Polled PB SM
 1/20/2025 95 ASA# 4592431

GIBBS 9114G ESSENTIAL KBHR REVOLUTION H071
TERS KODIAK 206K **SCHOOLEY MISS 126J 345L**
 TECS EXTREME 709E SCHOOLEY MISS 823F 126J

	CE	BW	WW	YW	ADG	MCE	MILK	MWW	STAY
EPD	7.8	1.9	94.8	149.9	0.34	4.0	28.0	75.3	20.5
Rank	75	65	10	10	10	80	20	10	10

	DOC	CW	YG	MARB	BF	REA	\$API	\$TI
EPD	17.6	47.6	-0.23	0.38	-0.031	0.95	156.9	94.9
Rank	3	15	90	20	95	35	20	15

BW ADJ. WW
84 **84**



IRON CREEK CEASAR 95N Sells as Lot 59.

We purchased Caesar's dam from Schooley Cattle Co. at their 2025 sale as the \$12,000 high selling bred female. She was bred to Kodiak and from that mating produced this meat machine. Top 10% in all growth categories, top 10-20% in milk, maternal weaning and Stay and top 20% marbling. A commercial cattlemen or women's answer.



K73M Sells as Lot 60.

LOT 60 K73M **GGP**

Homo Black II Homo Polled 3/4 SM 1/4 AN
 7/18/2024 K73M ASA# 4511137

HOOK'S EAGLE 6E W/C FORT KNOX 609F
TJ BONAFIDE 647H **IRON CREEK SUGAR D73K**
 TJ 23D WS MISS SUGAR C4

	CE	BW	WW	YW	ADG	MCE	MILK	MWW	STAY
EPD	9.4	1.5	108.5	173.8	0.41	4.7	28.9	83.0	11.4
Rank	75	80	1	1	2	85	15	1	80

	DOC	CW	YG	MARB	BF	REA	\$API	\$TI
EPD	18.0	55.3	-0.23	0.43	-0.051	0.92	136.7	100.6
Rank	4	15	40	45	25	15	50	10

BW ADJ. WW

Sugar Notice! K73M is out of a direct daughter of WS Miss Sugar C4 and is sired by TJ Bonafide, a bull dad purchased from Triangle J that does not get enough credit. The Bonafides are very attractive, very easy keeping and sound cattle that grow at an unbelievable rate. K73M is a typical Bonafide, a great look with top 1% weaning and top 1% yearling weight EPDs, top 3% average daily gain and 1% maternal weaning weight. A beef bull that will add pounds to your scale and dollars to your account. In today's market, bulls like K73M will pay for themselves very quickly.



TJ 954G Maternal grandam of Lot 62.

LOT 61 G773M

Homo Black II Homo Polled 5/8 SM 3/8 AN
 7/1/2024 G773M ASA# 4511114

HOOK'S EAGLE 6E HOOK'S EAGLE 6E
TJ BONAFIDE 647H **TJ 773G**
 TJ 23D TJ 50D

	CE	BW	WW	YW	ADG	MCE	MILK	MWW	STAY
EPD	12.0	0.0	101.8	161.5	0.37	5.5	30.1	80.8	14.2
Rank	45	55	3	3	10	75	10	2	60

	DOC	CW	YG	MARB	BF	REA	\$API	\$TI
EPD	16.5	48.1	-0.25	0.47	-0.044	0.93	147.7	99.9
Rank	10	25	30	40	35	15	30	10

BW ADJ. WW

773M is out of an outstanding Eagle daughter we purchased from Triangle J and by dad's Bonafide bull. This bull is bred for growth and this is verified with his top 3% weaning weight and yearling weight EPDs. An excellent bull from a cow that produces a good one every year.



DRAKE BULL L954N Sells as Lot 62.

LOT 62 DRAKE BULL L954N **GGP**

Hetero Black II Homo Polled PB SM
 1/24/2025 L954N ASA# 4584338

LCDR PROGRESSIVE 106G FIVE STAR JACKSON J10
ES FIVE STAR LIMITLESS LJ39 **DRAKE MISS G954L**
 ES J39 TJ 954G

	CE	BW	WW	YW	ADG	MCE	MILK	MWW	STAY
EPD	11.9	-1.2	102.3	163.4	0.38	9.4	32.3	83.3	15.6
Rank	30	15	3	2	2	10	10	1	50

	DOC	CW	YG	MARB	BF	REA	\$API	\$TI
EPD	14.2	72.8	-0.24	0.64	-0.030	1.33	175.9	111.1
Rank	25	1	90	5	99	2	4	1

BW ADJ. WW

74 **804**

A beast of a bull. This Limitless x Jackson is near the dream cross. EPDs for CE, growth, maternal, and carcass are all top percentages. He has an API of 173 and a TI of 108. Just take a look at the bull. WW 804 lbs and YW 1618.



LOT 63 **DRAKE BULL L404N** **GGP**
 Homo Black II Homo Polled PB SM
 2/16/2025 L404N ASA# 4584350

GIBBS 7382E BROAD RANGE BSUM MOST WANTED 117J
GIBBS 9114G ESSENTIAL **DRAKE MISS H404L**
 GIBBS 7153E STAR 3136A DRAKE MISS B404H

	CE	BW	WW	YW	ADG	MCE	MILK	MWW	STAY
EPD	14.4	-0.2	97.7	156.3	0.37	8.6	31.4	80.1	19.1
Rank	15	25	10	4	3	10	10	2	15
	DOC	CW	YG	MARB	BF	REA	\$API	\$TI	
EPD	13.9	50.3	-0.20	0.44	-0.008	1.09	171.1	102.0	
Rank	25	10	95	15	99	15	10	4	
BW					ADJ. WW				
77					792				

A top son of Essential with a 792 lb. WW and 1575 lb. YW. All purpose bull with fifteen numbers in the top 25% EPDs. About as many good numbers as you will find in a bull.



DRAKE BULL L404N Sells as Lot 63.

LOT 64 **DRAKE BULL F136N** **GGP**
 Hetero Black II Homo Polled 3/8 SM 5/8 AN
 2/25/2025 F136N ASA# 4591200

TUEL COWMAKER A3032 SILVEIRAS STYLE 9303
BSUM MOST WANTED 117J **DRAKE MISS 136F**
 X/L MS 9103G SCHOOLEY MISS 136

	CE	BW	WW	YW	ADG	MCE	MILK	MWW	STAY
EPD	16.2	-0.9	75.9	120.6	0.28	8.0	25.2	63.0	13.7
Rank	15	40	60	50	50	35	40	50	65
	DOC	CW	YG	MARB	BF	REA	\$API	\$TI	
EPD	11.2	40.4	0.07	0.42	0.007	0.25	134.6	80.4	
Rank	70	45	99	50	90	99	50	60	
BW					ADJ. WW				
81					708				

A Most Wanted son out of a tremendous purebred Angus cow sired by Silveiras Style. Sure like the way this guy is put together and his EPD shows him in the Top 15% for CE. A weaning weight of 768 with a yearling weight of 1453.



DRAKE BULL F136N Sells as Lot 64.

LOT 65 **DRAKE BULL J647N** **GGP**
 Homo Black II Homo Polled 5/8 SM 3/8 AN
 2/20/2025 J647N ASA# 4584341

TUEL COWMAKER A3032 TJ HANDYMAN 436G
BSUM MOST WANTED 117J **DRAKE IC MS 647J**
 X/L MS 9103G TJ 647G

	CE	BW	WW	YW	ADG	MCE	MILK	MWW	STAY
EPD	13.6	-0.9	85.8	122.5	0.23	8.0	23.9	66.8	17.4
Rank	35	40	25	50	80	35	50	35	25
	DOC	CW	YG	MARB	BF	REA	\$API	\$TI	
EPD	14.9	28.8	0.00	0.52	0.000	0.26	149.9	89.9	
Rank	25	75	95	35	90	99	30	25	
BW					ADJ. WW				
79					626				

A sound, easy-keeping bull with balanced EPDs across the board. Top 30% Ce, top 25% WW and a 150 API.



LOT 66 **HARLAN BULL 106N** **GGP**
 Hetero Black II Homo Polled PB SM
 2/1/2025 D106N ASA# 4583957

LLSF VANTAGE POINT F398 TJ DIESEL 350Z
CLRWTR CLEAR ADVANTAGE H4G **DRAKE MISS B106D**
 WS MISS SUGAR C4 DRAKE MISS T106B

	CE	BW	WW	YW	ADG	MCE	MILK	MWW	STAY
EPD	13.6	0.1	82.4	122.8	0.25	7.9	22.6	63.8	12.8
Rank	20	30	40	40	50	20	55	50	75
	DOC	CW	YG	MARB	BF	REA	\$API	\$TI	
EPD	14.6	12.9	-0.39	0.25	-0.055	0.85	139.5	86.9	
Rank	20	99	40	40	75	55	40	35	
BW					ADJ. WW				
79					686				

A bigger framed, smooth made, baldy Clear Advantage son with a balanced set of EPDs. This bull has a personal adj. yearling weight of 1302 lbs.



Another outstanding Keystone x Blackbird son- outstanding EPDs across the board and outstanding to look at on the hoof- these bulls are just can't miss guys!



BASIN KEYSTONE 2021 Sire of Lots 67, 68.



IRON CREEK BELFAST 8108M Sells as Lot 67.

LOT 67 IRON CREEK BELFAST 8108M

Homo Black || Homo Polled PB AN
8/29/2024 8108 ASA# 4613050

EZAR STEP UP 9178 BASIN PAYWEIGHT 1682
BASIN KEYSTONE 2021 MONTANA BLACKBIRD 7250
BASIN JOY 9140 GALAXY BLACKBIRD 2102

	CE	BW	WW	YW	ADG	MCE	MILK	MWW	STAY
EPD	15.0	-1.8	87.1	149.5	0.39	10.0	31.3	75.5	14.6
Rank	20	25	25	10	4	10	10	10	55
	DOC	CW	YG	MARB	BF	REA	\$API	\$TI	
EPD	13.5	67.7	0.21	1.03	0.054	0.51	157.2	93.0	
Rank	40	3	99	2	99	80	20	20	

BW ADJ. WW
ET

LOT 68 IRON CREEK DUBLIN 8192M

Homo Black || Homo Polled PB AN
8/29/2024 8192 ASA# 4613048

EZAR STEP UP 9178 BASIN PAYWEIGHT 1682
BASIN KEYSTONE 2021 MONTANA BLACKBIRD 7250
BASIN JOY 9140 GALAXY BLACKBIRD 2102

	CE	BW	WW	YW	ADG	MCE	MILK	MWW	STAY
EPD	15.0	-1.8	87.1	149.5	0.39	10.0	31.3	75.5	14.6
Rank	20	25	25	10	4	10	10	10	55
	DOC	CW	YG	MARB	BF	REA	\$API	\$TI	
EPD	13.5	67.7	0.21	1.03	0.054	0.51	157.2	93.0	
Rank	40	3	99	2	99	80	20	20	

BW ADJ. WW
ET



IRON CREEK DUBLIN 8192M Sells as Lot 68.

In the past two years we have aggressively sought Angus sires with strong feet/claw scores as we have found foot issues to be a uniquely Angus issue. Basin Keystone is the 2023 Basin Angus top selling bull at \$135,000 for two-thirds interest and he brings top foot scores along with outstanding EPDs across the board and a very practical, moderate frame to the equation. Dublin is representative of the Keystones we have seen-and benefits from his dam's strong genetic contribution. Look at the balance in his EPDs, top 20% calving ease and weaning weight, top 10% yearling weight, top 4% average daily gain, outstanding maternal traits of top 4% maternal calving ease, 5% milk and 10% maternal weaning weight, with top 2% carcass weight and marbling and strong API and TI Indexes. An excellent commercial bull.



MONTANA BLACKBIRD 7250 Dam of Lots 67, 68.

LOT 69 IRON CREEK DEADWOOD 9827M

Homo Black II Homo Polled PB AN
 9/26/2024 9827 ASA# 4611597

POSS MAVERICK BASIN PAYWEIGHT 1682
POSS DEADWOOD MONTANA BLACKBIRD 7250
 POSS ELLUNAMERE 399 GALAXY BLACKBIRD 2102

	CE	BW	WW	YW	ADG	MCE	MILK	MWW	STAY
EPD	15.0	-1.4	93.6	159.0	0.41	9.1	26.8	74.2	14.9
Rank	20	30	10	4	2	20	25	10	55
	DOC	CW	YG	MARB	BF	REA	\$API	\$TI	
EPD	13.1	73.8	0.20	1.16	0.040	0.51	166.4	99.2	
Rank	45	1	99	1	99	80	10	10	
BW					ADJ. WW				
80					ET				

This Deadwood x Blackbird son is unbelievable- a powerful fall bull with just a special look and broad based excellence in his EPD profile-top 20% calving ease with top 2% gain, top 10-25% in maternal traits and top 1% marbling and carcass weight. Blackbird does not miss and this will be one of the last opportunities to buy Blackbird genetics. Buy with confidence.



IRON CREEK DEADWOOD 9827M Sells as Lot 69.

LOT 70 IRON CREEK SURPASS 3296M

Homo Black II Homo Polled PB AN
 9/28/2024 3296 ASA# 4613049

TEX PLAYBOOK 5437 BASIN PAYWEIGHT 1682
BJ SURPASS MONTANA BLACKBIRD 7250
 BJ PROPHET 5275 GALAXY BLACKBIRD 2102

	CE	BW	WW	YW	ADG	MCE	MILK	MWW	STAY
EPD	17.9	-2.1	89.4	145.4	0.35	13.1	31.3	77.2	13.4
Rank	10	20	20	15	15	1	10	4	65
	DOC	CW	YG	MARB	BF	REA	\$API	\$TI	
EPD	13.3	55.3	0.14	0.66	0.032	0.42	138.3	85.6	
Rank	45	15	99	20	99	90	45	40	
BW					ADJ. WW				
55					ET				

This bull's sire, BJ Surpass, is an Angus breed-leader for maternal and foot strength-and this bulls shows it. 3296M has as good a set of EPDs as you will find-with top 10-15% calving ease and growth traits and top 1-5% maternal traits. And look at him! Outstanding phenotype- the type of bull you are proud to have in your pasture- and he is an age advantaged fall bull!



IRON CREEK SURPASS 3296M Sells as Lot 70.

LOT 71 IRON CREEK BOSS 3253M

Homo Black II Homo Polled PB AN
 9/25/2024 3253 ASA# 4613051

EZAR STEP UP 9178 GALAXY DETAIL 8546
BASIN KEYSTONE 2021 GALAXY BARBARA 1746
 BASIN JOY 9140 GALAXY BARBARA 8213

	CE	BW	WW	YW	ADG	MCE	MILK	MWW	STAY
EPD	14.0	-1.5	90.9	158.4	0.42	11.4	31.6	77.0	14.2
Rank	30	30	15	4	2	3	5	5	60
	DOC	CW	YG	MARB	BF	REA	\$API	\$TI	
EPD	14.0	67.6	0.16	1.00	0.034	0.52	155.1	94.5	
Rank	35	3	99	3	99	80	20	15	
BW					ADJ. WW				
80					ET				

Another Keystone son and this one out of our Angus donor purchased from Galaxy Beef in Missouri. Boss is just that- top 2% gain with top 1% maternal calving ease, 5% milk and 4% maternal weaning weight and top 2% marbling-with a top 30% calving ease. He will produce calves that will perform in any segment of the beef industry- they will perform in the feedlot or your pastures- all will gain with the best in the world and his daughters will be outstanding cows.



IRON CREEK BOSS 3253M Sells as Lot 71.



IRON CREEK 4427M Sells as Lot 72.

LOT 72 IRON CREEK 4427M

Homo Black II Homo Polled PB AN

12/17/2024 4427 ASA# 4625420

EZAR STEP UP 9178 BASIN PAYWEIGHT 1682

BASIN KEYSTONE 2021 **MONTANA BLACKBIRD 7250**

BASIN JOY 9140 GALAXY BLACKBIRD 2102

CE	BW	WW	YW	ADG	MCE	MILK	MWW	STAY
14.7	-1.8	87.1	149.6	0.39	9.7	31.6	76.0	14.5
Rank 25	25	25	10	4	15	5	10	55

DOC	CW	YG	MARB	BF	REA	SAPI	STI
13.6	69.3	0.20	1.04	0.054	0.59	164.7	95.9
Rank 40	2	99	2	99	70	15	95

BW **ADJ. WW**

60 **ET**

4427M is another Blackbird x Keystone bull with some extra style. A bull with strong EPDs and excellent genetic potential. Top 4% gain with top 25% calving ease, 2% marbling and top 5-15% maternal traits. A strong genetic addition to any herd.

2026 PUREBRED SIMMENTAL PERCENTILE TABLE

%	CE	BW	WW	YW	ADG	DMI	\$GN	MCE	MILK	MWW	STAY	DOC	CW	YG	MARB	BF	REA	API	TI
1	19.50	-4.00	105.80	165.70	0.39	-0.17	0.11	11.00	36.80	81.80	22.80	18.70	64.30	-0.58	0.81	-0.13	1.37	188.40	107.10
2	18.20	-3.30	102.60	160.20	0.37	-0.09	0.10	10.30	35.10	79.70	21.90	17.70	60.50	-0.56	0.73	-0.12	1.30	182.00	104.20
3	17.30	-2.90	100.50	156.50	0.36	-0.04	0.10	9.90	34.20	78.30	21.30	17.20	57.90	-0.54	0.68	-0.12	1.26	178.00	102.35
4	16.70	-2.60	99.00	153.80	0.35	0.00	0.09	9.60	33.40	77.20	20.90	16.80	55.80	-0.52	0.64	-0.12	1.23	174.90	100.90
5	16.30	-2.30	97.70	151.50	0.35	0.04	0.09	9.40	32.70	76.40	20.60	16.50	54.30	-0.51	0.60	-0.11	1.21	172.30	99.70
10	14.60	-1.50	93.40	143.80	0.32	0.14	0.08	8.50	30.20	73.50	19.50	15.40	49.30	-0.47	0.49	-0.10	1.13	163.40	95.70
15	13.60	-0.90	90.30	138.60	0.31	0.22	0.07	8.00	28.60	71.50	18.70	14.70	46.00	-0.45	0.42	-0.09	1.07	157.00	93.00
20	12.80	-0.50	88.00	134.50	0.29	0.28	0.06	7.50	27.40	69.90	18.10	14.20	43.40	-0.43	0.36	-0.09	1.03	152.20	90.70
25	12.10	-0.10	86.00	131.00	0.28	0.34	0.06	7.10	26.50	68.50	17.60	13.70	41.20	-0.42	0.32	-0.08	1.00	147.78	88.70
30	11.60	0.30	84.30	127.80	0.27	0.38	0.05	6.80	25.64	67.30	17.00	13.20	39.30	-0.40	0.28	-0.08	0.97	143.90	86.80
35	11.10	0.60	82.70	124.90	0.27	0.43	0.05	6.50	24.90	66.00	16.60	12.80	37.60	-0.39	0.25	-0.08	0.95	140.30	85.10
40	10.60	0.80	81.30	122.10	0.26	0.48	0.05	6.20	24.20	64.90	16.10	12.40	35.90	-0.38	0.22	-0.08	0.92	136.80	83.50
45	10.20	1.10	79.90	119.60	0.25	0.53	0.04	5.90	23.50	63.70	15.60	12.00	34.30	-0.37	0.19	-0.07	0.90	133.30	82.00
50	9.70	1.30	78.70	117.20	0.24	0.58	0.04	5.60	22.90	62.60	15.10	11.60	32.90	-0.36	0.16	-0.07	0.88	129.90	80.60
55	9.30	1.60	77.50	114.90	0.23	0.64	0.04	5.40	22.30	61.50	14.60	11.20	31.50	-0.34	0.14	-0.07	0.86	126.60	79.20
60	8.80	1.80	76.30	112.60	0.23	0.69	0.03	5.10	21.70	60.40	14.00	10.80	30.10	-0.33	0.11	-0.06	0.83	123.50	77.80
65	8.40	2.10	75.20	110.40	0.22	0.75	0.03	4.85	21.10	59.20	13.40	10.40	28.80	-0.32	0.09	-0.06	0.81	120.20	76.40
70	7.90	2.30	73.90	108.00	0.21	0.81	0.02	4.60	20.40	58.10	12.80	10.00	27.40	-0.31	0.06	-0.06	0.78	117.10	75.00
75	7.40	2.60	72.50	105.60	0.20	0.88	0.02	4.30	19.70	56.90	12.10	9.50	25.90	-0.29	0.03	-0.05	0.76	113.80	73.70
80	6.80	2.90	70.90	102.90	0.19	0.96	0.01	3.90	18.90	55.70	11.40	8.90	24.40	-0.28	0.01	-0.05	0.73	110.40	72.30
85	6.00	3.30	69.20	99.80	0.19	1.04	0.01	3.50	18.00	54.40	10.70	8.20	22.60	-0.26	-0.03	-0.05	0.69	107.20	70.90
90	5.10	3.90	67.00	96.00	0.17	1.15	0.00	3.00	16.90	52.80	9.80	7.20	20.40	-0.23	-0.06	-0.04	0.65	103.30	69.00
95	3.50	4.80	63.80	90.30	0.16	1.31	-0.02	2.20	15.20	50.60	8.70	5.60	17.20	-0.19	-0.11	-0.03	0.58	98.30	66.10
AVG	9.70	1.30	78.70	117.20	0.24	0.58	0.04	5.60	22.90	62.60	15.10	11.60	32.90	-0.36	0.16	-0.07	0.88	129.90	80.60

2026 HYBRID PERCENTILE TABLE

%	CE	BW	WW	YW	ADG	DMI	\$GN	MCE	MILK	MWW	STAY	DOC	CW	YG	MARB	BF	REA	API	TI
1	21.50	-5.70	105.20	169.50	0.42	-0.10	0.15	12.10	34.70	81.40	22.70	19.60	72.60	-0.45	1.10	-0.10	1.24	190.03	108.50
2	20.30	-5.00	101.90	163.60	0.40	-0.01	0.14	11.50	33.40	79.20	21.70	18.70	68.10	-0.42	1.00	-0.09	1.17	183.50	105.10
3	19.60	-4.50	99.70	160.10	0.39	0.05	0.13	11.20	32.50	77.90	21.20	18.10	65.60	-0.40	0.93	-0.08	1.13	178.90	103.20
4	19.00	-4.20	98.10	157.00	0.38	0.09	0.12	10.90	31.90	76.90	20.70	17.60	63.40	-0.39	0.88	-0.08	1.09	175.60	101.60
5	18.50	-3.95	96.80	154.60	0.37	0.13	0.12	10.60	31.30	76.10	20.30	17.30	61.80	-0.38	0.85	-0.08	1.07	173.00	100.40
10	16.90	-3.00	92.30	146.80	0.35	0.26	0.10	9.80	29.50	73.20	19.10	16.20	56.30	-0.34	0.74	-0.07	0.97	164.40	96.20
15	15.80	-2.40	89.30	141.60	0.33	0.35	0.09	9.30	28.30	71.10	18.30	15.40	52.50	-0.31	0.67	-0.06	0.91	158.30	93.50
20	14.90	-1.90	87.00	137.50	0.32	0.42	0.09	8.80	27.40	69.50	17.70	14.90	49.70	-0.29	0.61	-0.06	0.87	153.60	91.30
25	14.20	-1.50	85.00	134.00	0.31	0.49	0.08	8.50	26.60	68.10	17.10	14.40	47.30	-0.27	0.56	-0.05	0.83	149.60	89.50
30	13.50	-1.20	83.30	130.80	0.30	0.55	0.07	8.10	26.00	66.80	16.60	14.00	45.10	-0.25	0.52	-0.05	0.80	146.10	87.90
35	12.97	-0.80	81.60	127.90	0.29	0.61	0.07	7.80	25.30	65.70	16.20	13.60	43.10	-0.23	0.48	-0.04	0.77	142.80	86.40
40	12.40	-0.58	80.10	125.20	0.28	0.67	0.06	7.50	24.80	64.70	15.70	13.20	41.30	-0.21	0.45	-0.04	0.74	139.70	84.90
45	11.90	-0.30	78.70	122.60	0.28	0.73	0.06	7.20	24.20	63.60	15.30	12.90	39.50	-0.20	0.41	-0.04	0.71	136.55	83.50
50	11.40	0.00	77.30	120.00	0.27	0.78	0.05	6.90	23.70	62.60	14.80	12.50	37.80	-0.18	0.38	-0.03	0.68	133.40	82.00
55	10.90	0.30	76.00	117.50	0.26	0.84	0.05	6.60	23.20	61.60	14.30	12.20	36.10	-0.17	0.35	-0.03	0.65	130.30	80.60
60	10.40	0.50	74.60	115.00	0.25	0.90	0.05	6.30	22.69	60.50	13.80	11.85	34.50	-0.15	0.32	-0.03	0.63	126.80	79.20
65	9.90	0.80	73.20	112.40	0.24	0.95	0.04	6.00	22.10	59.40	13.20	11.50	32.70	-0.13	0.29	-0.02	0.60	123.30	77.70
70	9.40	1.10	71.70	109.70	0.23	1.02	0.04	5.70	21.50	58.20	12.60	11.10	30.90	-0.11	0.26	-0.02	0.57	119.60	76.00
75	8.80	1.40	70.00	106.80	0.23	1.08	0.03	5.30	20.80	57.00	11.90	10.60	29.10	-0.09	0.23	-0.01	0.54	115.70	74.37
80	8.20	1.70	68.20	103.60	0.22	1.16	0.02	4.90	20.10	55.70	11.20	10.10	27.10	-0.07	0.19	-0.01	0.50	111.40	72.50
85	7.40	2.10	66.20	99.90	0.21	1.25	0.02	4.50	19.20	54.10	10.30	9.40	24.90	-0.04	0.15	0.00	0.46	106.60	70.50
90	6.50	2.60	63.40	95.60	0.19	1.36	0.01	3.90	18.10	52.20	9.20	8.50	22.10	-0.01	0.11	0.00	0.40	101.10	68.20
95	5.00	3.30	59.40	88.90	0.17	1.53	-0.01	3.10	16.40	49.20	7.80	6.90	17.80	0.04	0.04	0.02	0.31	93.50	64.80
AVG	11.40	0.00	77.30	120.00	0.27	0.78	0.05	6.90	23.70	62.60	14.80	12.50	37.80	-0.18	0.38	-0.03	0.68	133.40	82.00

The Bred Heifers.



K904M Sells as Lot 74.

74	LOT	K904M
	Black II Homo Polled	
	2/6/2024	K904
		3/4 SM 1/4 AN
		ASA# 4511142
	HOOK'S FULL FIGURES 11F	HOOK'S EAGLE 6E
	FIVE STAR JACKSON J10	IRON CREEK G904K
	KBHR F316	CAST CC 904G

	CE	BW	WW	YW	ADG	MCE	MILK	MWW	STAY
EPD	13.4	-0.6	92.4	140.8	0.30	9.3	26.5	72.6	14.3
Rank	35	45	15	20	35	20	30	15	60
	DOC	CW	YG	MARB	BF	REA	\$API	\$TI	
EPD	15.4	41.2	-0.27	0.56	-0.035	0.99	151.0	96.8	
Rank	20	40	25	30	50	10	25	10	

Est. Calf EPDs	CE	BW	WW	YW	MCE	MILK	MWW	STAY	DOC	CW	YG	MARB	REA	\$API	\$TI
	14.0	-1.4	87.0	133.1	8.9	29.6	73.0	15.9	16.9	43.0	-0.27	0.76	0.89	175.3	102.6

A sale feature without a doubt, K904M represents what we love about the Jackson females. Strong top line, soggy depth of body, outstanding shoulders and neck and moving on sound feet and legs. We purchased the grandmother 904G at Triangle J several years ago and her Eagle daughter, 904M's dam, is a thing of beauty that will be in our herd for a long time to come. 13 traits in the top 35% of the breed. Depth of pedigree to match her royal look. AI May 7 to Ruby Quadrant. PE to Knockout. Due 2/23 with bull calf.



FIVE STAR JACKSON J10 Sire of Lot 74.

The bred heifers were bred by AI and then pasture exposed to the bulls as indicated in the footnotes. The heifers were then checked by ultrasound. The breeding information is the best estimate of the technician but is not a guarantee. We cannot guarantee calf sex or exact calving date and ask you to use your best judgment in this regard. Buyers agree to pick up all bred heifers within 7 days of the sale. The bulls used on the heifer AI and naturals are all top bulls of the breed. Five Star Jackson, HA knockout, Iron Creek Built Different, Mason Landmark, FHCC Majority, Ruby Quadrant, ES Fivestar Limitless, and TJ Chosen One. We are proud to offer you this outstanding set of females. They're definitely donor quality, front pasture kind, and brood cows deluxe represented in this offering.

We are so proud of this year's heifer group. We pledged to continually offer more attractive females while maintaining or improving EPD profiles. M5 constitutes delivery on that pledge. One of the most attractive females we have ever raised, with pedigree and numbers to match. Sired by what we believe to be a new breed leader among female producers, the \$65,000 Five Star Jackson, and out of a full sister to Triangle J's stud bull, TJ 50K, her pedigree is in rare air. But she isn't just a pretty face with a wealthy family- she has substance. Substance of body and substance of genetic potential, featuring 14 EPDs in the top 30% of the breed with balanced excellence from calving ease, to growth, to maternal, carcass and Indexes. A purebred donor female with unlimited breeding options. AI to Ruby Quadrant May 7. PE to HA Knockout. Due 2/23 to Ruby Quadrant.



DRAKE MISS M5 Sells as Lot 75.



TJ 20H Dam of Lot 75.

LOT 75 DRAKE MISS M5
 Black // Homo Polled PB SM
 3/1/2024 M5 ASA# 4612892

HOOK'S FULL FIGURES 11F TJ TEARDROP 783F
FIVE STAR JACKSON J10 TJ 20H
 KBHR F316 TJ 92C

CE	BW	WW	YW	ADG	MCE	MILK	MWW	STAY
13.0	0.2	86.8	132.1	0.28	8.8	33.4	76.7	17.7
Rank 20	30	25	25	35	10	5	5	25

DOC	CW	YG	MARB	BF	REA	\$API	\$TI
14.7	37.2	-0.21	0.29	-0.034	0.77	151.8	90.9
Rank 20	35	95	35	95	75	25	25

Est. Calf EPDs

CE	BW	WW	YW	MCE	MILK	MWW	STAY	DOC	CW	YG	MARB	REA	\$API	\$TI
13.8	-1.0	84.2	128.8	8.7	33.1	75.1	17.6	16.5	41.0	-0.24	0.63	0.78	170.6	97.9

LOT 76 DRAKE MISS F33M
 Black // Polled PB SM
 2/23/2024 F33M ASA# 4612897

HOOK'S FULL FIGURES 11F TJ PLATTE RIVER 370D
FIVE STAR JACKSON J10 DRAKE MISS X33F
 KBHR F316 JS DOLLY 33X

CE	BW	WW	YW	ADG	MCE	MILK	MWW	STAY
13.1	0.2	79.2	119.1	0.25	9.7	27.3	66.9	16.7
Rank 20	30	50	50	50	4	25	35	40

DOC	CW	YG	MARB	BF	REA	\$API	\$TI
14.7	32.0	-0.18	0.50	-0.022	0.69	157.6	90.5
Rank 20	55	99	15	99	85	20	25

Est. Calf EPDs

CE	BW	WW	YW	MCE	MILK	MWW	STAY	DOC	CW	YG	MARB	REA	\$API	\$TI
10.7	1.2	98.7	149.0	8.2	27.6	76.9	17.2	17.6	46.8	-0.26	0.46	1.04	158.6	98.9



DRAKE MISS F33M Sells as Lot 76.

Mating to Limitless could be a homerun. F33M comes from the great JS Dolly 33X cow family. We really like our Limitless calves. Sells bred to ES Limitless due 2/22 with heifer calf.

Jackson Heifer mated to the great Angus bull, Majority. Her heifer calf's planned mating API's 185. Sells bred to FHCC Majority due 2/15 with heifer calf.



DRAKE MISS F21M Sells as Lot 77.

LOT 77 DRAKE MISS F21M
 Black // Polled PB SM
 2/24/2024 F21M ASA# 4612894

HOOK'S FULL FIGURES 11F ELM-MOUND/GS STANDSALONE
FIVE STAR JACKSON J10 **DRAKE MISS Y21F**
 KBHR F316 DRAKE MISS W21Y

	CE	BW	WW	YW	ADG	MCE	MILK	MWW	STAY					
EPD	14.9	-1.0	72.7	106.6	0.21	9.9	27.0	63.1	14.4					
Rank	10	15	75	75	75	4	25	50	60					
	DOC	CW	YG	MARB	BF	REA	\$API	\$TI						
EPD	13.8	21.7	-0.35	0.35	-0.057	0.81	147.6	85.3						
Rank	25	90	55	25	75	65	30	40						
Est. Calf EPDs														
CE	BW	WW	YW	MCE	MILK	MWW	STAY	DOC	CW	YG	MARB	REA	\$API	\$TI
13.7	-1.0	87.5	132.9	9.0	28.6	72.1	13.8	14.1	41.0	-0.26	0.56	0.86	160.8	97.9

LOT 78 DRAKE MISS K177M
 Black // Polled PB SM
 1/23/2024 K177M ASA# 4612899

HOOK'S FULL FIGURES 11F CCR SPEAK NOW 6178G
FIVE STAR JACKSON J10 **DRAKE MISS C177K**
 KBHR F316 DRAKE SNICKERS 177C

	CE	BW	WW	YW	ADG	MCE	MILK	MWW	STAY					
EPD	13.1	-0.4	80.7	123.1	0.27	10.3	27.0	67.3	13.8					
Rank	20	25	45	40	40	3	25	35	65					
	DOC	CW	YG	MARB	BF	REA	\$API	\$TI						
EPD	13.0	32.7	-0.29	0.45	-0.043	0.88	152.1	91.6						
Rank	35	50	80	15	90	50	25	20						
Est. Calf EPDs														
CE	BW	WW	YW	MCE	MILK	MWW	STAY	DOC	CW	YG	MARB	REA	\$API	\$TI
16.5	0.1	90.6	145.3	4.6	34.8	80.0	14.0	14.6	60.0	-0.03	1.18	0.77	185.6	109.0



DRAKE MISS K177M Sells as Lot 78.

Outstanding Jackson heifer Aled to FHCC Majority due 2/15. Her bull calf's planned mating API 186 and TI 109. Top 2% and top 1% of the breed.



DRAKE MISS K207M Sells as Lot 79.

LOT 79 DRAKE MISS K207M
 Black II Homo Polled 3/4 SM 1/4 AN
 1/23/2024 K207M ASA# 4612903

HOOK'S FULL FIGURES 11F TJ PLATTE RIVER 370D
FIVE STAR JACKSON J10 **DRAKE MISS CE207K**
 KBHR F316 DRAKE HERE FOR THE PARTY

	CE	BW	WW	YW	ADG	MCE	MILK	MWW	STAY
EPD	13.7	0.1	82.4	128.8	0.29	10.4	26.3	67.5	15.0
Rank	30	55	35	35	40	10	30	30	50

	DOC	CW	YG	MARB	BF	REA	\$API	\$TI
EPD	15.1	39.5	-0.12	0.59	-0.012	0.68	149.2	90.2
Rank	20	45	70	25	75	50	30	25

Est. Calf EPDs

	CE	BW	WW	YW	MCE	MILK	MWW	STAY	DOC	CW	YG	MARB	REA	\$API	\$TI
	16.8	0.4	91.4	148.2	4.7	34.5	80.1	14.6	15.7	63.4	0.06	1.25	0.67	189.4	110.1

Love this heifer from our favorite angus base family. What a cow family: Jackson, Platte River, Silveiras Style to the \$25,000 Hotz Elsa out of Cherry Knoll Elsa 8014. Her Knockout bull calf will be fun due 3/10.



DRAKE MISS G107M Sells as Lot 80.

LOT 80 DRAKE MISS G107M
 Hetero Black II Polled PB SM
 2/28/2024 G107M ASA# 4612904

HOOK'S FULL FIGURES 11F WS ALL ABOARD B80
FIVE STAR JACKSON J10 **DRAKE MISS 107G**
 KBHR F316 DRAKE MISS W107E

	CE	BW	WW	YW	ADG	MCE	MILK	MWW	STAY
EPD	12.8	-0.1	89.2	136.5	0.30	10.2	25.9	70.5	9.7
Rank	25	30	20	20	25	3	30	20	95

	DOC	CW	YG	MARB	BF	REA	\$API	\$TI
EPD	13.7	39.3	-0.31	0.49	-0.049	0.97	148.6	97.3
Rank	30	30	70	15	90	30	25	10

Est. Calf EPDs

	CE	BW	WW	YW	MCE	MILK	MWW	STAY	DOC	CW	YG	MARB	REA	\$API	\$TI
	13.7	-1.1	85.4	131.0	9.4	29.3	72.0	13.6	16.0	42.1	-0.29	0.73	0.88	169.5	101.3

You will like this one and her bull calf by TJ Chosen One due 2/15. The Jackson females are for sure among the best we have ever had.



LOT 81 DRAKE MISS G5M
 Black II Homo Polled PB SM
 3/20/2024 G5M ASA# 4612902

HOOK'S FULL FIGURES 11F KOCH BIG TIMBER 685D
FIVE STAR JACKSON J10 **TJ 5G**
 KBHR F316 TJ 43Z

	CE	BW	WW	YW	ADG	MCE	MILK	MWW	STAY
EPD	12.7	-0.6	79.0	119.3	0.25	9.6	31.8	71.2	16.4
Rank	25	20	50	50	50	5	10	20	40

	DOC	CW	YG	MARB	BF	REA	\$API	\$TI
EPD	14.5	37.5	-0.15	0.53	-0.026	0.63	159.6	92.4
Rank	20	35	99	10	99	95	15	20

Est. Calf EPDs

	CE	BW	WW	YW	MCE	MILK	MWW	STAY	DOC	CW	YG	MARB	REA	\$API	\$TI
	12.8	-0.2	88.1	136.8	9.0	28.6	72.5	18.3	14.8	46.3	-0.24	0.67	0.85	174.0	100.0

A great Jackson heifer whose dam is a maternal sister to Platte River. Aled to TJ Chosen One this heifer calf will be exciting due 2/15.



IRON CREEK BUILT DIFFERENT Service sire of Lot 82.

Iron Creek Built Different was the top selling bull from our 2025 sale to Steve Stumpe and we retained certain breeding rights. We used Built Different on our heifers this year and can't wait to see the result. This sale represents your first chance to buy females carrying his service.

LOT 82 E3M

Black II Polled 3/4 SM 1/4 AN
 2/23/2024 E3M ASA# 4511138

HOOK'S FULL FIGURES 11F TJ DIESEL 350Z

FIVE STAR JACKSON J10 **DFC SUNRISE EXCITEMENT**
 KBHR F316 DRAKE SUMMER SUNRISE

	CE	BW	WW	YW	ADG	MCE	MILK	MWW	STAY
EPD	12.5	0.3	87.7	137.2	0.31	9.5	26.8	70.5	14.5
Rank	45	60	20	25	30	15	25	20	55

	DOC	CW	YG	MARB	BF	REA	\$API	\$TI
EPD	13.6	43.9	-0.19	0.49	-0.025	0.85	142.9	90.8
Rank	40	35	50	40	65	25	40	25

Est. Calf EPDs

CE	BW	WW	YW	MCE	MILK	MWW	STAY	DOC	CW	YG	MARB	REA	\$API	\$TI
12.7	0.3	92.5	145.7	9.0	26.1	72.2	17.4	14.4	49.5	-0.26	0.65	0.96	170.5	100.8



E3M Sells as Lot 82.

Another attractive Jackson daughter with strong, balanced EPDs. This female traces to our Drake Summer Sunrise show heifer. AI May 15 to Majority. Pasture exposed to Iron Creek Built Different. Due 2/14 with a bull calf.



IRON CREEK MATRON D033M Sells as Lot 83.



GIBBS 9114G ESSENTIAL Sire of Lots 83, 84.

LOT 83 **IRON CREEK MATRON D033M** ♂GGP
 Homo Black || Homo Polled PB SM
 1/22/2024 D033 ASA# 4378540

GIBBS 7382E BROAD RANGE

HOOK'S BEACON 56B

GIBBS 9114G ESSENTIAL

KBHR MATRON OF HONOR F202

GIBBS 7153E STAR 3136A

BAR CK MS X38 106Z

	CE	BW	WW	YW	ADG	MCE	MILK	MWW	STAY
EPD	12.8	-1.0	85.6	138.3	0.33	10.5	32.4	75.1	20.3
Rank	25	15	30	20	10	2	10	10	10
	DOC	CW	YG	MARB	BF	REA	\$API	\$TI	
EPD	14.8	58.7	-0.27	0.57	-0.021	1.32	176.0	99.4	
Rank	20	3	85	10	99	2	4	10	

Est. Calf EPDs	CE	BW	WW	YW	MCE	MILK	MWW	STAY	DOC	CW	YG	MARB	REA	\$API	\$TI
	15.1	-1.9	92.7	149.6	10.1	27.4	73.8	18.4	14.2	59.7	-0.10	0.76	1.02	180.1	104.0

Matron D033 is in the top 25% of 15 different traits or indexes including top 10% Gain, top 10% or better in every maternal or carcass trait and a 175 API. A truly outstanding female. AI to Majority May 12. Pasture exposed to Built Different. Due 2/14 with a heifer calf.

LOT 84 **IRON CREEK MATRON 5822M** ♂GGP
 Homo Black || Homo Polled PB SM
 1/24/2024 5822M ASA# 4378542

GIBBS 7382E BROAD RANGE

HOOK'S BEACON 56B

GIBBS 9114G ESSENTIAL

KBHR MATRON OF HONOR F202

GIBBS 7153E STAR 3136A

BAR CK MS X38 106Z

	CE	BW	WW	YW	ADG	MCE	MILK	MWW	STAY
EPD	11.3	-1.0	91.1	144.2	0.33	9.0	32.4	77.9	21.4
Rank	35	15	15	15	10	10	10	4	4
	DOC	CW	YG	MARB	BF	REA	\$API	\$TI	
EPD	15.8	58.5	-0.39	0.57	-0.035	1.57	178.5	102.9	
Rank	10	3	40	10	95	1	4	3	

Est. Calf EPDs	CE	BW	WW	YW	MCE	MILK	MWW	STAY	DOC	CW	YG	MARB	REA	\$API	\$TI
	14.3	-1.9	95.4	152.6	9.3	27.4	75.2	19.0	14.7	59.6	-0.16	0.76	1.14	181.5	105.8

Top 15% in 15 different traits and indexes including top 10% yearling and gain, top 10% or better in all maternal and carcass traits and top 4% API and 2% TI. Elite balance in a great female. Pasture exposed to Iron Creek Built Different. Due 3/5.

Another outstanding Matron daughter, this one sired by the commercial power bull, Genesis. Mary combines a top 15-20% growth EPD set with top 10-20% maternal traits, top 1% marbling and 3% ribeye and a top 2% API and top 1% TI. Elite balance across all traits combined with an attractive look and near perfect neck and shoulder structure. AI to Mason Landmark May 12. Due 2/10 with a bull calf. Pasture exposed to Built Different.



IRON CREEK MARY A37M Sells as Lot 85.



LBRS GENESIS G69 Sire of Lot 85.

LOT 85 **IRON CREEK MARY A37M** **GGP**
 Homo Black II Homo Polled PB SM
 1/8/2024 A37 ASA# 4378531

WS PROCLAMATION E202						HOOK'S BEACON 56B									
LBRS GENESIS G69						KBHR MATRON OF HONOR F202									
LBR DIANA D69						BAR CK MS X38 106Z									
	CE	BW	WW	YW	ADG	MCE	MILK	MWW	STAY						
EPD	9.7	-0.6	92.2	136.3	0.28	7.6	28.1	74.1	17.3						
Rank	55	20	15	20	35	20	20	10	30						
	DOC	CW	YG	MARB	BF	REA	\$API	\$TI							
EPD	14.7	62.6	-0.23	0.85	-0.016	1.27	180.2	107.7							
Rank	20	2	90	1	99	3	3	1							
Est. Calf EPDs															
	CE	BW	WW	YW	MCE	MILK	MWW	STAY	DOC	CW	YG	MARB	REA	\$API	\$TI
	13.5	-1.7	96.0	148.6	8.6	25.2	73.3	16.9	14.1	61.7	-0.08	0.90	0.99	182.4	108.3



KBHR MATRON OF HONOR F202 Dam of Lots 83-85.

These three Matron daughters have donor potential. Matron of Honor has been our lead donor for over 5 years. She is the kind of female that produces outstanding seedstock and commercial bulls—we have sold over 40 bulls from Matron and have averaged over \$9,000.00. She does everything right—breeds back on the first breeding each year, maintains great body condition year around, still has a perfect udder at almost 8 years of age and is an attentive mother. All with outstanding, across the board EPDs and a still top 2% All Purpose Index of 181.5. Crossed with Essential and Genesis she has created attractive, balanced females with unlimited breeding potential.



DRAKE MISS H765M Sells as Lot 86.

LOT 86 DRAKE MISS H765M

Black II Polled 5/8 SM 3/8 AN
2/24/2024 H765M ASA# 4612895

TUEL COWMAKER A3032 TJ AMERICAN FORTITUDE 430F
BSUM MOST WANTED 117J DRAKE MISS X765H
X/L MS 9103G DRAKE MISS L765X

CE	BW	WW	YW	ADG	MCE	MILK	MWW	STAY
11.6	1.9	86.9	137.5	0.32	6.4	25.3	68.7	16.6
Rank 50	85	25	25	25	60	40	25	35

DOC	CW	YG	MARB	BF	REA	\$API	\$TI
13.2	37.2	-0.17	0.28	-0.038	0.60	131.5	82.9
Rank 45	55	55	70	50	65	55	50

Est. Calf EPDs

CE	BW	WW	YW	MCE	MILK	MWW	STAY	DOC	CW	YG	MARB	REA	\$API	\$TI
12.2	1.1	92.1	145.9	7.4	25.3	71.3	18.4	14.2	46.2	-0.25	0.54	0.84	163.0	96.2

Aled to TJ Chosen One for a heifer calf due 2/15. Check the planned mating EPDs on these heifers.



DRAKE MISS K30M Sells as Lot 87.

LOT 87 DRAKE MISS K30M

Black II Polled 3/4 SM 1/4 AN
2/9/2024 K30M ASA# 4612905

HOOK'S GALILEO 210G TJ ROUGH COUNTRY 219G
HA KNOCKOUT 2K DRAKE MISS G30K
HA HOPE 004H DRAKE MISS E30G

CE	BW	WW	YW	ADG	MCE	MILK	MWW	STAY
12.0	-0.6	76.5	119.1	0.27	6.4	27.9	66.0	15.5
Rank 45	45	55	55	55	60	20	35	45

DOC	CW	YG	MARB	BF	REA	\$API	\$TI
17.5	34.3	-0.24	0.64	-0.049	0.70	149.9	89.1
Rank 5	60	35	20	35	45	30	30

Est. Calf EPDs

CE	BW	WW	YW	MCE	MILK	MWW	STAY	DOC	CW	YG	MARB	REA	\$API	\$TI
12.4	-0.2	86.9	136.7	7.4	26.6	69.9	17.9	16.3	44.7	-0.28	0.72	0.89	173.7	99.8

Nice Knockout heifer. Her bull calf by TJ Chosen One due 2/15 should be a good bonus with a planned mating API of 176 and TI of 100.

LOT 88 DRAKE MISS D765M

Black II Polled 5/8 SM 3/8 AN
3/1/2024 D765M ASA# 4612898

HOOK'S EAGLE 6E SS/PRS CHASIN TAIL 18A
TJ BONAFIDE 647H DRAKE MISS T765D
TJ 23D DRAKE MISS 765T

CE	BW	WW	YW	ADG	MCE	MILK	MWW	STAY
10.0	0.9	87.6	139.0	0.32	5.8	27.1	70.8	13.9
Rank 65	70	20	20	25	70	25	20	65

DOC	CW	YG	MARB	BF	REA	\$API	\$TI
14.0	40.4	-0.26	0.21	-0.061	0.73	123.1	83.2
Rank 35	45	30	80	15	40	70	50

Est. Calf EPDs

CE	BW	WW	YW	MCE	MILK	MWW	STAY	DOC	CW	YG	MARB	REA	\$API	\$TI
12.8	0.2	89.0	138.1	9.5	30.1	74.5	14.5	14.1	39.3	-0.27	0.46	0.85	154.1	94.9

Bonafide female mated to Fivestar Jackson. Her calf will be a special one! Sells bred to Five Star Jackson due on 3/25.

LOT 89 DRAKE MISS F136M

Black II Polled 3/8 SM 5/8 AN
3/20/2024 F136M ASA# 4612896

HOOK'S EAGLE 6E SILVEIRAS STYLE 9303
TJ BONAFIDE 647H DRAKE MISS 136F
TJ 23D SCHOOLLEY MISS 136

CE	BW	WW	YW	ADG	MCE	MILK	MWW	STAY
12.5	-0.3	84.6	135.3	0.32	6.7	27.7	69.9	11.8
Rank 45	50	30	25	25	55	20	20	80

DOC	CW	YG	MARB	BF	REA	\$API	\$TI
12.8	42.5	-0.06	0.43	-0.016	0.50	129.9	85.7
Rank 50	40	85	45	75	80	60	40

Est. Calf EPDs

CE	BW	WW	YW	MCE	MILK	MWW	STAY	DOC	CW	YG	MARB	REA	\$API	\$TI
13.5	-1.2	83.1	130.4	7.6	30.2	71.7	14.7	15.6	43.7	-0.17	0.70	0.65	159.0	94.9

Look this one over. Full sib to the Dam of our outstanding L136N bull, Lot - in sale. Study this heifer and the L136N bull. Think about what she could do for your program. Sells bred to HA Knockout due 3/15 with a bull calf.



LOT 90 IRON CREEK CRYSTAL C72M ♂GGP

Homo Black II Homo Polled PB SM
1/16/2024 C72 ASA# 4378536

GIBBS 7382E BROAD RANGE GW-WBF SUBSTANCE 820Y
GIBBS 9114G ESSENTIAL HOOK'S CRYSTAL 1C
GIBBS 7153E STAR 3136A HOOK'S UNDERESTIMATED 6U

CE	BW	WW	YW	ADG	MCE	MILK	MWW	STAY						
7.6	1.9	106.7	175.5	0.43	4.9	26.3	79.5	17.6						
Rank 75	65	1	1	1	65	30	3	30						
DOC	CW	YG	MARB	BF	REA	\$API	\$TI							
15.7	55.8	-0.26	0.33	-0.022	1.23	154.7	101.4							
Rank 10	4	85	25	99	4	20	4							
Est. Calf EPDs														
CE	BW	WW	YW	MCE	MILK	MWW	STAY	DOC	CW	YG	MARB	REA	\$API	\$TI
12.5	-0.4	103.2	168.2	7.3	24.3	76.0	17.1	14.6	58.3	-0.10	0.64	0.97	168.3	104.6

Looking for growth?? This Essential daughter out of the dam of Hook's Eagle is in the top 1% for weaning weight, yearling weight and average daily gain! She will produce power bulls! Also strong in maternal and carcass traits with a top 20% API and top 4% TI. AI May 12 to Ruby Quadrant. PE to Iron Creek Built Different. Due 2/22 with a heifer calf.

LOT 91 K18M

Black II Homo Polled 1/2 SM 1/4 AN 1/4 CS
3/4/2024 K18 ASA# 4511143

HOOK'S FULL FIGURES 11F TJ HANDYMAN 436G
FIVE STAR JACKSON J10 IRON CREEK 18K
KBHR F316 JC MS CAPITALIST 392A 018H

CE	BW	WW	YW	ADG	MCE	MILK	MWW	STAY						
14.3	-0.3	89.8	140.9	0.32	10.8	31.5	76.3	15.1						
Rank 25	50	15	20	25	5	5	5	50						
DOC	CW	YG	MARB	BF	REA	\$API	\$TI							
10.5	47.3	-0.13	0.76	-0.025	0.69	163.0	100.0							
Rank 80	25	70	10	65	50	15	10							
Est. Calf EPDs														
CE	BW	WW	YW	MCE	MILK	MWW	STAY	DOC	CW	YG	MARB	REA	\$API	\$TI
14.4	-1.2	85.7	133.2	9.7	32.1	74.9	16.3	14.4	46.1	-0.20	0.86	0.74	179.9	103.6

A beautiful daughter of Jackson with maternal strength throughout her pedigree. The Jackson daughters are absolute standouts and are doing everything we had hoped- outstanding look with excellent EPDs. We purchased her Capitalist grandmother from JC Simmental for \$8,000 and she is a growth specialist cow with femininity. Crossed with TJ Handyman she created a maternal powerhouse in 18M's mother. AI May 7 to Ruby Quadrant. Pasture exposed to Knockout. Due 3/13 with a heifer calf.

LOT 93 DRAKE MISS G92M

Black II Polled 3/4 SM 1/4 AN
2/15/2024 G92M ASA# 4612901

HOOK'S EAGLE 6E TJ PLATTE RIVER 370D
TJ BONAFIDE 647H DRAKE MISS B92G
TJ 23D DRAKE MISS 292B

CE	BW	WW	YW	ADG	MCE	MILK	MWW	STAY						
12.0	0.1	87.9	130.8	0.27	6.8	26.8	70.7	13.9						
Rank 45	55	20	35	55	55	25	20	65						
DOC	CW	YG	MARB	BF	REA	\$API	\$TI							
17.5	36.3	-0.27	0.22	-0.058	0.74	126.1	84.4							
Rank 5	55	25	80	25	40	65	45							
Est. Calf EPDs														
CE	BW	WW	YW	MCE	MILK	MWW	STAY	DOC	CW	YG	MARB	REA	\$API	\$TI
12.4	0.2	92.6	142.5	7.6	26.1	72.3	17.1	16.3	45.7	-0.30	0.51	0.91	163.0	98.0

Aled to TJ Chosen One with a heifer calf on 2/22. Having Bonafide and Platte River on the maternal side this gal and her heifer will be outstanding brood cows.

LOT 92 DRAKE MISS D104M

Black II Polled PB SM
2/12/2024 D104M ASA# 4612900

WS PROCLAMATION E202 SS/PRS TRACKIN TAIL 461A
CCR SPEAK NOW 6178G DRAKE MISS Y104D
CCR MS 2138 BOLDR 6028D GONSIOR YADA YADA Y104

CE	BW	WW	YW	ADG	MCE	MILK	MWW	STAY						
10.9	0.8	77.6	121.4	0.27	7.3	16.7	55.4	12.2						
Rank 40	45	60	45	40	25	95	85	80						
DOC	CW	YG	MARB	BF	REA	\$API	\$TI							
12.9	34.1	-0.29	0.11	-0.059	0.77	124.2	78.5							
Rank 35	45	80	65	75	75	60	60							
Est. Calf EPDs														
CE	BW	WW	YW	MCE	MILK	MWW	STAY	DOC	CW	YG	MARB	REA	\$API	\$TI
11.9	0.5	87.4	137.8	7.9	21.0	64.6	16.2	14.0	44.6	-0.31	0.46	0.92	156.3	93.1

Mated to TJ Chosen One, you will love her calf. Due 2/22.

LOT 94 DRAKE MISS K27M

Black II Homo Polled PB SM
1/22/2024 K27M ASA# 4612893

GIBBS 7382E BROAD RANGE TJ ROUGH COUNTRY 219G
GIBBS 9114G ESSENTIAL DRAKE MISS G27K
GIBBS 7153E STAR 3136A TJ 27G

CE	BW	WW	YW	ADG	MCE	MILK	MWW	STAY						
10.0	0.8	87.3	141.4	0.34	5.8	32.7	76.3	18.3						
Rank 50	45	25	15	10	50	10	10	20						
DOC	CW	YG	MARB	BF	REA	\$API	\$TI							
16.7	43.8	-0.14	0.41	-0.004	0.84	155.7	92.9							
Rank 5	20	99	20	99	60	20	20							
Est. Calf EPDs														
CE	BW	WW	YW	MCE	MILK	MWW	STAY	DOC	CW	YG	MARB	REA	\$API	\$TI
11.4	0.5	92.3	147.8	7.1	29.0	75.1	19.3	15.9	49.5	-0.23	0.61	0.96	171.7	100.1

A top essential daughter mated to TJ Chosen One. Should be a great bull calf with a 171 API. Sells bred to TJ Chosen One due 2/15 with bull calf.

Each of the bulls below is owned, in whole or in part, by Iron Creek Cattle Co. or Drake Simmental.
Contact Larry, Mason or Flint for semen.



FIVE STAR JACKSON J10

FOR REFERENCE	FIVE STAR JACKSON J10								
	Hetero Black Homo Polled							PB SM	
	2/16/2021							ASA# 3947790	
	TJ DIPLOMAT 294D				WS ALL ABOARD B80				
	HOOK'S FULL FIGURES 11F				KBHR F316				
	HOOK'S DOCILA 23D				KBHR C295				
	CE	BW	WW	YW	ADG	MCE	MILK	MWW	STAY
EPD	15.5	-0.6	90.4	137.2	0.29	13.1	33.0	78.1	15.0
Rank	10	20	20	20	30	1	5	4	55
	DOC	CW	YG	MARB	BF	REA	\$API	\$TI	
EPD	14.2	38.1	-0.27	0.70	-0.033	0.97	175.2	104.7	
Rank	25	35	85	3	95	30	5	2	



TJ BONAFIDE 647H

FOR REFERENCE	TJ BONAFIDE 647H								
	Homo Black Homo Polled							5/8 SM 3/8 AN	
	1/23/2020							ASA# 3762668	
	HOOK'S BLACK HAWK 50B				TJ MAKERS MARK 215Y				
	HOOK'S EAGLE 6E				TJ 23D				
	HOOK'S CRYSTAL 1C				TJ 8T				
	CE	BW	WW	YW	ADG	MCE	MILK	MWW	STAY
EPD	11.1	0.0	109.0	171.5	0.39	6.4	32.5	86.9	14.0
Rank	55	55	1	1	4	60	4	1	60
	DOC	CW	YG	MARB	BF	REA	\$API	\$TI	
EPD	18.2	49.8	-0.29	0.28	-0.064	0.93	138.6	99.7	
Rank	3	20	20	70	15	15	45	10	



HOOK'S EAGLE 6E

FOR REFERENCE	HOOK'S EAGLE 6E								
	Homo Black Homo Polled							3/4 SM 1/4 AN	
	1/22/2017							ASA# 3253742	
	HOOK'S XAVIER 14X				GW-WBF SUBSTANCE 820Y				
	HOOK'S BLACK HAWK 50B				HOOK'S CRYSTAL 1C				
	HOOK'S YVETTE 100Y				HOOK'S UNDERESTIMATED 6U				
	CE	BW	WW	YW	ADG	MCE	MILK	MWW	STAY
EPD	12.6	-2.5	97.1	150.8	0.34	5.1	17.3	65.7	14.6
Rank	40	15	5	10	15	80	95	40	55
	DOC	CW	YG	MARB	BF	REA	\$API	\$TI	
EPD	18.2	38.1	-0.42	0.53	-0.052	1.26	155.6	101.0	
Rank	3	50	3	35	25	1	20	5	

Each of the bulls below is owned, in whole or in part, by Iron Creek Cattle Co. or Drake Simmental.
Contact Larry, Mason or Flint for semen.

FOR REFERENCE	BSUM MOST WANTED 117J							
	Hetero Black II Homo Polled				5/8 SM 3/8 AN			
	2/15/2021				ASA# 3916336			

SCHIEFELBEIN EFFECTIVE 61 NLC COW BOSS 160C
TUEL COWMAKER A3032 **X/L MS 9103G**
 RRS MISS LEGACY 615X GW MISS DUE NORTH 800D

	CE	BW	WW	YW	ADG	MCE	MILK	MWW	STAY
EPD	15.8	-0.1	90.6	143.4	0.33	8.1	27.4	72.7	15.6
Rank	20	50	15	15	20	35	25	15	45
	DOC	CW	YG	MARB	BF	REA	\$API	\$TI	
EPD	14.9	39.5	-0.15	0.45	-0.033	0.61	149.6	92.6	
Rank	25	45	60	45	50	65	30	20	



BSUM MOST WANTED 117J

FOR REFERENCE	POSS DEADWOOD							
	Homo Black II Homo Polled				PB AN			
	9/5/2019				ASA# 3871754			

BASIN PAYWEIGHT 1682 POSS EASY IMPACT 0119
POSS MAVERICK **POSS ELLUNAMERE 399**
 POSS PRIDE 5163 POSS ELLUNMERE 0170

	CE	BW	WW	YW	ADG	MCE	MILK	MWW	STAY
EPD	13.3	-0.4	104.3	180.0	0.47	8.0	24.0	76.1	14.6
Rank	35	45	2	1	1	35	50	10	55
	DOC	CW	YG	MARB	BF	REA	\$API	\$TI	
EPD	14.0	89.8	0.16	1.66	0.027	0.75	195.0	117.1	
Rank	35	1	99	1	99	40	1	1	



POSS DEADWOOD

FOR REFERENCE	TJ WAR PAINT 759J							
	Homo Black II Homo Polled				1/2 SM 1/2 AN			
	2/24/2021				ASA# 3910125			

TJ FROSTY 318E CCR COWBOY CUT 5048Z
TJ CHIEF 460G **TJ 2D**
 TJ 52A TJ MISS NEW DAY U14

	CE	BW	WW	YW	ADG	MCE	MILK	MWW	STAY
EPD	9.2	1.1	86.0	124.5	0.24	6.0	25.6	68.5	20.0
Rank	75	75	25	45	75	70	35	25	10
	DOC	CW	YG	MARB	BF	REA	\$API	\$TI	
EPD	12.9	41.7	0.09	0.39	0.013	0.26	138.6	83.7	
Rank	50	40	99	55	95	99	45	50	



TJ WAR PAINT 759J

Each of the bulls below is owned, in whole or in part, by Iron Creek Cattle Co. or Drake Simmental.
Contact Larry, Mason or Flint for semen.



CCR SPEAK NOW 6178G

FOR REFERENCE	CCR SPEAK NOW 6178G	
	Homo Black II Homo Polled	3/4 SM 1/4 AN
	8/30/2019	ASA# 3703453

CCR COWBOY CUT 5048Z

CCR BOULDER 1339A

WS PROCLAMATION E202
WS MISS SUGAR C4

CCR MS 2138 BOLDR 6028D
CCR MS 7332REVENUE 2138Z

	CE	BW	WW	YW	ADG	MCE	MILK	MWW	STAY
EPD	12.9	-1.2	84.4	136.2	0.32	10.1	18.1	60.2	12.1
Rank	40	35	30	25	25	10	95	65	75
	DOC	CW	YG	MARB	BF	REA	\$API	\$TI	
EPD	14.8	42.6	-0.25	0.21	-0.048	0.84	125.8	83.4	
Rank	25	40	30	80	35	25	65	50	



HA KNOCKOUT 2K

FOR REFERENCE	HA KNOCKOUT 2K	
	Homo Black II Homo Polled	PB SM
	1/28/2022	ASA# 4040478

BRIDLE BIT ECLIPSE E744

HOOK'S BLACK HAWK 50B

HOOK'S GALILEO 210G
HOOK'S EVITA 18E

HA HOPE 004H
HA FELICITY 815F

	CE	BW	WW	YW	ADG	MCE	MILK	MWW	STAY
EPD	14.5	-2.1	81.6	125.4	0.27	8.5	32.7	73.4	17.5
Rank	15	10	40	35	40	15	10	15	30
	DOC	CW	YG	MARB	BF	REA	\$API	\$TI	
EPD	18.3	44.8	-0.27	0.96	-0.066	0.79	192.7	107.6	
Rank	2	20	85	1	60	70	1	1	



IRON CREEK BUILT DIFFERENT 34M

FOR REFERENCE	IRON CREEK BUILT DIFFERENT 34M	
	Homo Black II Homo Polled	3/8 SM 5/8 AN
	1/21/2024	ASA# 4378399

POSS MAVERICK

CLRS GUARDIAN 317G

POSS DEADWOOD
POSS ELLUNAMERE 399

CCR MS 6175 GUARD 1003J
CCR MS 2407 WD RNG 6175D

	CE	BW	WW	YW	ADG	MCE	MILK	MWW	STAY
EPD	17.3	-2.7	99.7	160.9	0.38	9.6	22.3	72.5	16.5
Rank	10	15	4	3	5	15	65	15	35
	DOC	CW	YG	MARB	BF	REA	\$API	\$TI	
EPD	13.5	60.7	0.07	0.94	0.033	0.71	184.1	110.2	
Rank	40	10	99	3	99	45	2	1	



LCDR MS JETTA 93J

FOR REFERENCE	LCDR MS JETTA 93J								
	Hetero Black // Homo Polled						PB SM		
	3/23/2021						ASA# 3960758		
W/C BANKROLL 811D				CLRS GRADE-A 875 A					
W/C FORT KNOX 609F				WS MISS SUGAR C4					
K-LER DOLLY'S QUEEN 609D				WS ANISE A71					
	CE	BW	WW	YW	ADG	MCE	MILK	MWW	STAY
EPD	12.1	0.3	85.2	138.0	0.33	6.8	26.0	68.5	10.9
Rank	30	35	30	20	10	35	30	30	85
	DOC	CW	YG	MARB	BF	REA	\$API	\$TI	
EPD	15.9	41.5	-0.25	0.39	-0.049	0.81	143.3	92.0	
Rank	10	25	90	20	90	65	35	20	



TJ MISS 29B

FOR REFERENCE	TJ MISS 29B								
	Homo Black // Homo Polled						1/2 SM 1/2 AN		
	1/19/2014						ASA# 2891386		
TRIPLE C SINGLETARY S3H				BOYD NEW DAY 8005					
CCR COWBOY CUT 5048Z				TJ MISS NEW DAY U19					
CCR MS 4045 TIME 7322T				T J MISS FREIGHT N22					
	CE	BW	WW	YW	ADG	MCE	MILK	MWW	STAY
EPD	9.0	2.0	78.0	126.4	0.30	6.1	33.3	72.3	6.6
Rank	75	85	50	40	35	65	3	15	99
	DOC	CW	YG	MARB	BF	REA	\$API	\$TI	
EPD	14.5	38.5	-0.23	0.50	-0.038	0.80	117.4	83.8	
Rank	25	50	40	35	50	30	75	45	



MONTANA BLACKBIRD 7250

FOR REFERENCE	MONTANA BLACKBIRD 7250								
	Homo Black // Homo Polled						PB Angus		
	09-03-2017						AAA# +*18885912		
BASIN PAYWEIGHT 006S				SITZ UPWARD 307R					
BASIN PAYWEIGHT 168Z				GALAXY BLACKBIRD 210Z					
21AR O LASS 7017				RIVERBEND BLACKBIRD 4301					
	CE	BW	WW	YW	CEM	MILK	DOC		
EPD	+14	-2.7	+66	+121	+13	+36	+32		
Rank	3	2	30	20	10	5	2		
	CW	MARB	RE	FAT	SM	\$W	\$B	\$C	
EPD	+52	+.82	+.57	+.070	+72	+79	+154	+272	
Rank	25	20	45	95	20	3	25	15	

FOR REFERENCE | **KBHR MATRON OF HONOR F202**
 Homo Black II Homo Polled PB SM
 3/26/2018 ASA# 3499782

HOOKS SHEAR FORCE 38K WS HOT BEEF X38
HOOK'S BEACON 56B BAR CK MS X38 106Z
 HOOKS ZAFIRAH 41Z BAR CK MS MEAT MKR 323T

	CE	BW	WW	YW	ADG	MCE	MILK	MWW	STAY
EPD	12.2	-1.0	75.2	118.8	0.27	10.5	32.5	70.0	20.0
Rank	30	15	70	50	40	2	10	25	10
	DOC	CW	YG	MARB	BF	REA	\$API	\$TI	
EPD	13.1	55.1	-0.37	0.78	-0.056	1.30	181.4	98.3	
Rank	35	5	45	2	75	2	3	10	



KBHR MATRON OF HONOR F202

FOR REFERENCE | **IRON CREEK MOXIE D68K**
 Homo Black II Homo Polled PB SM
 3/4/2022 ASA# 4115093

HOOK'S BEACON 56B TJ TEARDROP 783F
CLRS GUARDIAN 317G TJ 20H
 CLRS ALWAYS XCELLENT TJ 92C

	CE	BW	WW	YW	ADG	MCE	MILK	MWW	STAY
EPD	13.5	-2.2	88.0	135.3	0.30	6.6	24.4	68.3	23.2
Rank	20	10	25	20	25	35	40	30	1
	DOC	CW	YG	MARB	BF	REA	\$API	\$TI	
EPD	9.7	34.6	-0.19	0.43	-0.019	0.78	176.1	97.1	
Rank	75	45	95	20	99	70	4	10	



IRON CREEK MOXIE D68K

FOR REFERENCE | **FIVE STAR JAZZY J14**
 Homo Black II Homo Polled PB SM
 2/22/2021 ASA# 3947793

TJ DIPLOMAT 294D WS ALL ABOARD B80
HOOK'S FULL FIGURES 11F KBHR F316
 HOOK'S DOCILA 23D KBHR C295

	CE	BW	WW	YW	ADG	MCE	MILK	MWW	STAY
EPD	11.1	0.4	92.3	148.7	0.35	10.3	33.5	79.6	11.3
Rank	40	35	15	10	10	3	4	3	85
	DOC	CW	YG	MARB	BF	REA	\$API	\$TI	
EPD	16.4	45.8	-0.29	0.57	-0.043	1.05	156.1	101.7	
Rank	10	15	80	10	90	20	20	4	



FIVE STAR JAZZY J14

ASA QUICK REFERENCE TO EPDS, INDEXES AND \$VALUES

EXPECTED PROGENY DIFFERENCES (EPDS): EPDs are the most accurate and effective tool available for comparing genetic levels. In using EPDs, the difference between two sires' EPDs represents the unit difference expected in the performance of their progeny. For example, if sires A and B have EPDs of +10 and -5, a 15-unit difference would be expected in their progeny (moving from -5 to +10 yields 15 units). Key to using EPDs is knowing in what units they are expressed. For example, if the above case referred to weaning weight EPDs, sire A would be expected to sire 15 pounds more weaning weight than sire B. If calving ease was the trait, sire A would be expected to sire 15 percent more unassisted births in first-calf heifers; in other words, if sire B sired 30 assists in a group of 100 heifers, we would expect sire A to require 15 assists. A percentile-ranking chart is required to determine where a bull's EPDs rank him relative to other bulls in the breed. For more detailed information about EPDs and \$ indexes, visit www.simmental.org.

Listed below are the units in which ASA EPDs are expressed:

ALL-PURPOSE INDEX (API): Dollars per cow exposed under an all-purpose-sire scenario. (See \$ Indexes for more details.)

BACK FAT (BF): Inches of carcass backfat at 475 days.

BIRTH WEIGHT (BW): Pounds of birth weight.

CALVING EASE (CE): Percent of unassisted births when used on heifers.

CARCASS WEIGHT (CW): Pounds of carcass weight at 475 days.

STAYABILITY (STAY): Percent of daughters remaining in the cow herd at 6 years of age.

DOCILITY (DOC): Percent of offspring receiving a disposition score of 1 (docile).

MATERNAL CALVING EASE (MCE): Percent of unassisted births in first-calving daughters.

MILK (MLK): Pounds of weaning weight due to milk.

MARBLING (MARB): Carcass marbling score at 475 days.

MATERNAL WEANING WEIGHT (MWW): Pounds of weaning weight due to milk and growth.

RIBEYE AREA (REA): Square inches of carcass ribeye at 475 days.

TERMINAL INDEX (TI): Dollars per cow exposed under a terminal-sire scenario. (See TI for more details.)

WEANING WEIGHT (WW): Pounds of weaning weight.

YEARLING WEIGHT (YW): Pounds of yearling weight.

YIELD GRADE (YG): Carcass yield grade score at 475 days.

\$ INDEXES: Though EPDs allow for the comparison of genetic levels for many economically important traits, they only provide pieces of the economic puzzle. This is where \$ indexes come in. Through well-conceived, rigorous mathematical computation, \$ indexes blend EPDs and economics to estimate an animal's overall impact on integrated commercial production. The same technology that led to the dramatic progress in swine, poultry and dairy genetics over the last several decades was used to develop the following \$ indexes:

ALL-PURPOSE INDEX (API): Evaluates sires for use on the entire cow herd (bred to both Angus first-calf heifers and mature cows) with the portion of their daughters required to maintain herd size retained and the remaining heifers and steers put on feed and sold grade and yield.

TERMINAL INDEX (TI): Evaluates sires for use on mature Angus cows with all offspring put on feed and sold grade and yield.

USING API AND TI: First, determine which index to use; if you are keeping replacements use API, if not, use TI. Then, just as with EPDs, zero in on the unit difference between bulls. (As described above, index units are in dollars per cow exposed.) The difference can be used to determine how much a bull is worth compared to another. Put another way, how much you can pay for one bull compared to another. For example, when buying an all-purpose-type sire, you can quickly figure a bull scoring +100 for API is worth an extra \$6,000 over a +50 bull if both are exposed to 30 cows over 4 years ($\$50 \text{ diff.} \times 30 \text{ hd.} \times 4 \text{ yr.} = \$6,000$). A percentile-ranking chart is required to determine where a bull's index value ranks him relative to other bulls in the breed.

For more detailed information about EPDs and \$indexes, visit: www.simmental.org Important disclaimer: DO NOT compare index values of purebreds of different breeds, hybrids of different breed composition or purebreds with hybrids - our system was not developed to make valid comparison among these groups. Therefore, you must first determine the breed and breed composition appropriate for your herd and use index values to compare animals within that population.



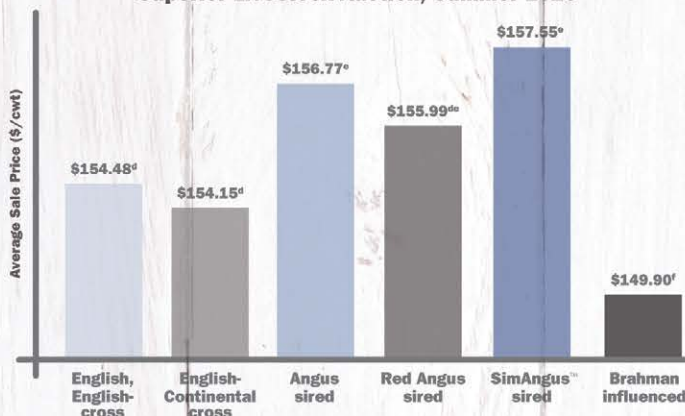
MORE PER HEAD PERIOD



SimGenetics
PROFIT THROUGH SCIENCE
American Simmental Association

EFFECT OF SIRE BREED ON SALE PRICE OF BEEF STEER CALVES

Superior Livestock Auction, Summer 2020^c



SimAngus™-sired steer calves sold through Superior Livestock Auction in summer 2020 earned **more at sale time** than all other calves:^b

It's no wonder the percentage of **SimAngus™** calves marketed through the industry's largest video auction has grown **eightfold** since 2010.

Want low-risk, high-potential calves with earning potential?

STAND STRONG SIMMENTAL

406-587-4531 • simmental.org

^a For lots of 50 head or more. ^b Kansas State University, December 2020, Superior Livestock Auction data analysis of 3,280 lots, 394,900 head of beef calves marketed during summer 2020. (P<.0001)

^c Lots that qualified for breed-related programs were excluded from the model due to potential confounding effects with sire breed analysis and, for many, few lots in the data.

^{d, e, f} Means without a common superscript differ (P<0.05) Lots of calves in breed-identified groups were sired by bulls from the respective breeds and out of dams with no Brahman influence.

Drake Simmental
24366 570th St
Centerville, IA 52544

Presorted
First Class
US Postage
PAID
SlateGroup



DRAKE SIMMENTAL

Bull and Female Sale

1.30.26

Drake Sale Facility, Centerville, IA at 1:00 PM (CT)