



Cattle
CONNECT

At Franzen Simmentals

1.20.26
Production Sale

Franzen Sale Facility - Leigh, NE - 1:00 PM CT



1538 Road 3, Leigh, NE

www.franzensimmentals.com

Welcome to our annual Franzen Simmentals Production Sale. Thank you for your interest in what we believe to be an excellent lineup of cattle. We're very excited to offer an outstanding selection of age advantage bulls and bred heifers.

We have been raising Simmental cattle for 48 years and have seen many changes in the industry during that time. Our ongoing focus is to raise the type of cattle we'd want to purchase, both stylistically and production-wise. We focus on raising cattle with more rib dimension and easier fleshing ability. Above that, we continue to focus on production numbers, as you'll see when looking at this year's sale stock.

After hearing customers talk about problems involving yearling bulls that had been fed too hard for their age causing feet and leg problems as well as breeding soundness issues, we have moved to marketing age advantage bulls. We feel it is better to use age advantage bulls able to service more cows and increase the longevity of sires.

Our entire calf crop is included in American Simmental Association's Calf Crop Genomics program, with DNA testing using the GGP-100k Genomics test, verifying parentage and giving genomically enhanced EPD's. Animals are tested homozygous or heterozygous for color and polled. We also participate in the ASA Total Herd Enrollment (THE) program improving EPD accuracy. Bulls have been semen tested with scrotal measurements. This information will be available sale day.

We've narrowed the list of sires that will drive our program's direction in the future by utilizing the RightMate program powered by Top Genomics LLC to prescribe the bulls that genomically complement each female resulting in the use of outcross genetics, maximizing improvement potential and improving calf crop uniformity. Throughout the year, we were able to increase focus on our ET and AI programs, paying closer attention to EPD numbers provided through planned matings. DNA analysis of our calves also provides valuable information. Cattle with a calm disposition continue to be important to us. We have many "pets" in our pasture!

Our cattle program is truly a family supported operation. We now have four generations of our family who wear Franzen Simmentals apparel and added two more great grandchildren in 2025. We are so appreciative of our entire family's support of our cattle operation and our sale.

We hope to see you on sale day. If you're not able to make it in person, our sale will again be broadcast online through DVAuction. Details on how to access the sale online are in the catalog. Reach out by phone or email any time with any questions. We welcome the opportunity to "talk Simmental cattle."

Lawrence and Myrna Rae Franzen

Lawrence Franzen
402-487-2678 home
402-276-1197 cell
franzenimmentals@gmail.com

VISIT OUR WEBSITE



Lawrence Franzen Family



Lawrence and Myrna Franzen

Craig Franzen 402-276-2400
Caleb Franzen 402-276-1925

DVAuction

Broadcasting Real-Time Auctions

WATCH AND BID ONLINE FOR FREE

Visit www.DVAuction.com and Register. It's as easy as 1, 2, 3...

1. Create an account at www.DVAuction.com under the "create new account" tab.
2. Apply for bidding by clicking "apply for bidding" in the upper left corner of your screen, at least 24 hours prior to the auction.
3. Tune into the sale and make your purchases.

www.DVAuction.com

support@dvauction.com

402-316-5460 || 402-474-5557

Cattle CONNECT

at Franzen Simmentals

1.20.26

Production Sale

Franzen Sale Facility -
Leigh, NE - 1:00 PM CT

SALE LOCATION

Franzen Simmental Sale Facility - Franzen Simmentals sign is at the driveway
1538 Road 3, Leigh, NE

Directions to the Sale Facility: On Highway 30, East of Columbus, turn off on Road 3 and travel 10 ½ miles north. On Highway 30, West of Schuyler, turn off on Road 3 and travel 10 ½ miles north. At Highway 91 and Hwy 57 Junction, travel 7 ½ miles South on Road 3.

SALE DAY PHONES

Lawrence Franzen	402.276.1197
Caleb Franzen	402.276.1925
Craig Franzen	402.276.2400
Corey Wilkins	256.590.2487
Jared Murnin	406.321.1542
Jake Melby	712.882.3018
Buddy Robertson	580.747.7000

AUCTIONEER

Tracy Harl	402.469.3852
------------	--------------

SCHEDULE OF EVENTS

Cattle can be viewed any time prior to sale day.

MONDAY, JANUARY 19

12:00 PM	Sale cattle on display at Franzen Simmental Sale Facility
----------	---

TUESDAY, JANUARY 20

8:00 AM	Sale cattle on display
12:00 NOON	Complimentary Lunch
1:00 PM	Cattle Connect Sale

SALE ACCOMMODATIONS

Hampton Inn, Columbus, NE	402.835.2099
Holiday Inn Express, Columbus, NE	402.564.2566
Sleep Inn & Suites, Columbus, NE	402.562.5200
Hampton Inn & Suites, Norfolk NE	855.605.0317

DELIVERY

The sellers, as well as sale staff will help arrange the delivery options, if needed.

Delivery of the cattle will be at the buyer's expense. It is requested that buyers make arrangements to take delivery of all females selling as soon as possible after the sale.

Bulls can stay with the seller free of charge until February 15, 2026.

ONLINE BIDDING

Sale broadcast live online at www.dvauction.com. See opposite page for more information. If you can't bid online or attend the sale, contact one of the owners, sale managers or consultants to discuss the cattle. Bidding can be done by phone or through a contact person.

TERMS & CONDITIONS

We will sell full possession and 2/3 semen interest in all Bulls. Franzen Simmentals reserves the right to collect semen on any of the bulls selling in the sale at the seller's expense and the buyer's convenience. Bulls are not guaranteed to freeze semen unless an agreement is reached prior to the sale. Terms of the sale are cash and all cattle become property of the buyer at the time of sale. All animals will be sold in accordance with the Suggested Sale Terms and Conditions of the American Simmental Association unless other terms are stated in this catalog. All announcements made on sale day take precedence over printed material in this catalog or other printed material associated with this sale. All cattle will be registered with the American Simmental Association and those papers will be transferred after the sale. Please note all EPDs will change between the time this catalog is printed and the day of the sale. All EPDs in the catalog will be current as of the day they are printed. Owners, their agents or any of the sale staff will not be held responsible for any personal injury, loss or accident while attending this sale.

BREEDING GUARANTEE

All bulls have been semen tested and are guaranteed breeders. Our consulting veterinary service recommends that a second test be done at breeding turnout. This guarantee does not cover injury, infectious disease, mismanagement, neglect and/or death. We ask that you contact us immediately before culling or disposing of the bull should anything occur. A signed veterinary statement and/or BSE form will be required. Bulls are not guaranteed to freeze semen unless an agreement is reached prior to the sale.

HERD HEALTH

All Franzen breeding stock are up-to-date on vaccinations and poured. All females are bangs vaccinated for Brucellosis, have completed a full schedule of Scour Guard vaccine. All heifers have been pregnancy tested by means of ultrasound. All bulls are semen tested and passed a positive soundness exam. Veterinary services by Loseke Veterinary Service, Columbus, Nebraska. Health papers will be issued sale day.

REGISTRATION AND PAYMENT

Please register for a bidding number sale day. When registering, please include your current ASA number for transferring registration papers. Payment is due sale day. Terms are cash or check with proper ID. No cattle will be released, delivered or transferred without full payment.



Marty Ropp 406-581-7835

Corey Wilkins 256-590-2487

Jared Murnin 406-321-1542

www.alliedgeneticresources.com

SALE MANAGEMENT



M514 Sells as Lot 1.



M192 Sells as Lot 2.

1

LF MASTER M514

♂GGP

Black || Homozygous Polled 5/8 SM 3/8 AN
BD: 2/19/2024 Bull ASA# 4473166

CLRS HOMELAND 327H

CLRS ALWAYS XCELLENT

W/C LOCK N LOAD 8771Z

LF CINDY

CLRWTR DEW DROP X5105H

CE	BW	WW	YW	MCE	MILK	MWW	STAY
11.2	0.4	78.5	117.3	6.1	18.3	57.5	26.8
DOC	CW	YG	MARB	BF	REA	\$API	\$TI
11.6	24.2	-0.34	0.22	-0.064	0.75	146.9	77.6

A Homeland percentage baldy bull. His stay EPD is in the top one percent for the breed. It doesn't get any better than this. He's one of the great feature bulls of the sale. Take a look!

2

LF MUCHACHO M192

♂GGP

Homozygous Black || Homozygous Polled PB SM
BD: 3/11/2024 Bull ASA# 4473168

LCDR RESERVE 210J

LCDR MS ECHO 43E

HOOK'S FRONTLINE 40F

JC MS FRONTLINE 870F 182J

JC MS X10 BEACON 870F

CE	BW	WW	YW	MCE	MILK	MWW	STAY
13.8	-0.7	85.1	130.3	9.4	25.4	67.9	20.4
DOC	CW	YG	MARB	BF	REA	\$API	\$TI
14.8	42.8	-0.31	0.36	-0.032	1.15	163.7	92.4

Reserve purebred baldy bull that's sure to please. His dam never misses. Great consistency.



M9 Sells as Lot 3.

3

LF MINUTE MAN M9

⚔GGP

Red || Homozygous Polled 3/4 SM 7/32 AR 1/32 AN
 BD: 2/9/2024 Bull ASA# 4473130

IR IMPERIAL D948

HSF CARDINAL 133G

HSF MISS SKY 59S 64Z

LEACHMAN CADILLAC L025A

ES H67

ES D127

CE	BW	WW	YW	MCE	MILK	MWW	STAY
7.1	1.4	83.4	129.4	5.7	22.5	64.1	19.8
DOC	CW	YG	MARB	BF	REA	\$API	\$TI
15.5	31.8	-0.43	0.29	-0.068	1.10	132.8	81.5

This three-quarter dark red bull was an embryo to the top selling red bred heifer last year. I wish every calf I raised looked like him.



HSF CARDINAL 133G Sire of Lots 3, 4.

4

LF MATCH MAKER M665

⚔GGP

Red || Homozygous Polled 3/4 SM 7/32 AR 1/32 AN
 BD: 3/18/2024 Bull ASA# 4473125

IR IMPERIAL D948

HSF CARDINAL 133G

HSF MISS SKY 59S 64Z

LEACHMAN CADILLAC L025A

ES H67

ES D127

CE	BW	WW	YW	MCE	MILK	MWW	STAY
8.8	0.6	83.8	126.0	6.7	22.5	64.3	22.3
DOC	CW	YG	MARB	BF	REA	\$API	\$TI
15.3	28.4	-0.29	0.49	-0.028	0.96	151.3	87.2

Full sib embryo to lot 3. Be sure to take a second look at this outstanding dark red bull.



M665 Sells as Lot 4.



M637 Sells as Lot 5.

5

LF MONTY M637

ØGGP

Heterozygous Black || Homozygous Polled

PB SM

BD: 4/4/2024

Bull ASA# 4473074

IR IMPERIAL D948

BAR CK RED EMPIRE 9153G

WS MISS NORTHSTAR B180

LRS TURNING POINT 3117A

WHF CIERRA 245C

WHF SIERRA 245S

CE	BW	WW	YW	MCE	MILK	MWW	STAY
5.2	3.0	93.6	151.0	7.2	28.4	75.1	13.6
DOC	CW	YG	MARB	BF	REA	\$API	\$TI
14.7	47.6	-0.41	0.33	-0.055	1.35	136.3	92.3

This purebred black embryo bull carries the red gene. Go either way with a black or red bloodline.



M279 Sells as Lot 6.

6

LF MUFASA M279

5/8 SM 3/8 AN

Homozygous Black || Homozygous Polled

Bull ASA# 4473120

BD: 1/25/2024

44 BRAGGING RIGHTS 4372

HOOK'S JOURNEY 7J

HOOK'S EVITA 18E

LF CLYDE

LF KANDI

BRIDLE BIT MISS H095

CE	BW	WW	YW	MCE	MILK	MWW	STAY
14.0	-2.7	66.2	100.8	8.7	24.9	57.9	19.5
DOC	CW	YG	MARB	BF	REA	\$API	\$TI
11.0	9.5	-0.25	0.44	-0.027	0.59	162.2	85.2

If you like a calving ease bull loaded with meat and muscle, here's your bull. Plus his API is 161.



96L Sells as Lot 7.

7

HSF JEFFERSON 90H 96L

ØGGP

Red || Homozygous Polled

5/8 SM 1/4 AN 1/8 AR

BD: 8/15/2023

Bull ASA# 4289988

LEACHMAN DECREE X936D

CLRS JEFFERSON 951J

M4 MS DESIRE 911G

WS OUTCROSS C164

HSF MISS OUTCROSS 75F 90H

HSF MISS 29Z 140Z 75F

CE	BW	WW	YW	MCE	MILK	MWW	STAY
8.4	0.4	77.3	124.3	5.1	21.7	60.2	16.5
DOC	CW	YG	MARB	BF	REA	\$API	\$TI
12.4	35.8	-0.32	0.38	-0.092	0.61	132.8	81.3

A red percentage fall bull with a little more size.



M239 Sells as Lot 8.

8

LF MAX M239

ØGGP

Homozygous Black || Homozygous Polled

5/8 SM 3/8 AN

BD: 2/24/2024

Bull ASA# 4473081

ACW IRONHIDE 395Y

TJ FROSTY 318E

TJ 58B

TJ FRANCHISE 451D

TJ 305J

TJ 67C

CE	BW	WW	YW	MCE	MILK	MWW	STAY
14.2	-1.2	81.1	119.5	4.1	26.0	66.4	12.7
DOC	CW	YG	MARB	BF	REA	\$API	\$TI
15.2	50.2	-0.13	0.28	-0.027	0.72	128.2	82.7

Here's a very attractive 5/8 bull. He's a thick-made, powerful baldy bull sure to catch your eye on sale day.

9

LF MONEY ORDER M188

ØGGP

Homozygous Black || Homozygous Polled PB SM
 BD: 2/19/2024 Bull ASA# 4473153

HOOK'S BEACON 56B

KBHR HONOR H060

WS MISS SUGAR C4

TJ FROSTY 318E

TJ 31G

TJ 124Y

CE	BW	WW	YW	MCE	MILK	MWW	STAY
12.1	-0.4	90.2	132.0	8.2	24.1	69.0	15.9
DOC	CW	YG	MARB	BF	REA	\$API	\$TI
10.9	49.9	-0.24	0.14	-0.038	0.99	140.2	88.5

The KBHR Honor son that serviced our heifers this year has the calving ease, growth spread, and deep body to sire fantastic calves.



M188 Sells as Lot 9.

10

LF MASTER MAKER M180

ØGGP

Black || Homozygous Polled 5/8 SM 3/8 AN
 BD: 3/24/2024 Bull ASA# 4598249

REDHILL 672X X004 231A

CLRS HOMELAND 327H

CLRS ALWAYS XCELLENT

TJ 962E

LF JANYCE

LF ELAINE

CE	BW	WW	YW	MCE	MILK	MWW	STAY
11.5	2.1	87.0	126.5	6.0	21.3	64.7	16.3
DOC	CW	YG	MARB	BF	REA	\$API	\$TI
9.6	35.5	-0.38	0.41	-0.056	1.08	136.8	85.9

Another Homeland bull with the right amount of body along with eye appeal. Outstanding bull. Keep daughters out of this bull.



M180 Sells as Lot 10.

11

LF MOUNTAINER M52

ØGGP

Homozygous Black || Homozygous Polled 3/4 SM 1/4 AN
 BD: 2/15/2024 Bull ASA# 4473141

CCR COWBOY CUT 5048Z

WS PROCLAMATION E202

WS MISS SUGAR C4

NLC COW BOSS 160C

NLC EADRIA E95

NLC A22 ADRIA

CE	BW	WW	YW	MCE	MILK	MWW	STAY
14.4	-1.3	88.9	130.6	8.8	23.7	68.4	20.3
DOC	CW	YG	MARB	BF	REA	\$API	\$TI
16.2	30.0	-0.12	0.64	-0.028	0.42	166.7	96.2

A three quarters Proclamation bull. You have to appreciate him for his completeness. He's good on paper and awesome to look at! One of my favorite bulls.



M52 Sells as Lot 11.

12

LF MAYOR M969

ØGGP

Homozygous Black || Homozygous Polled 3/4 SM 1/4 AN
 BD: 3/27/2024 Bull ASA# 4473146

TRIPLE C SINGLETARY S3H

CCR COWBOY CUT 5048Z

CCR MS 4045 TIME 7322T

TJ 962E

LF GAIL

TJ 70A

CE	BW	WW	YW	MCE	MILK	MWW	STAY
15.2	1.3	71.1	95.6	8.2	23.5	58.9	18.6
DOC	CW	YG	MARB	BF	REA	\$API	\$TI
13.5	11.2	-0.36	0.26	-0.054	0.72	131.1	73.3

If you want to add some Cowboy Cut genetics in your herd, this guy can do it. There are not many of his progeny left.



M969 Sells as Lot 12.



M701 Sells as Lot 13.

13 LF MADDEN M701 ØGGP
 Black || Polled 3/4 SM 1/4 AN
 BD: 4/1/2024 Bull ASA# 4473100

CLRS AFTER SHOCK 604 A
CLRS DIVIDEND 405D
 CLRS BONNIA 405 B
 HOOK'S BLACK HAWK 50B
LF EVER KNOWN
 LF LOCKN LASSIE

CE	BW	WW	YW	MCE	MILK	MWW	STAY
10.1	-1.8	66.5	108.4	4.6	16.8	50.0	12.8
DOC	CW	YG	MARB	BF	REA	\$API	\$TI
14.1	20.8	-0.28	0.31	-0.037	0.75	123.2	75.3

A Dividend bull with a beautiful front end. This bull follows suit with the rest of his cow family. Power and growth with an attractive look.



M573 Sells as Lot 14.

14 LF MAXIMUS M573 ØGGP
 Black || Polled 1/2 SM 7/16 AN 1/16 CS
 BD: 3/24/2024 Bull ASA# 4473154

REDHILL 672X X004 231A
CLRS HOMELAND 327H
 CLRS ALWAYS XCELLENT
 W/C LOCK N LOAD 8771Z
LF DORIS
 LF BAILEY

CE	BW	WW	YW	MCE	MILK	MWW	STAY
18.9	-3.6	63.9	99.5	8.9	19.3	51.1	18.6
DOC	CW	YG	MARB	BF	REA	\$API	\$TI
11.9	22.8	-0.29	0.48	-0.031	0.83	156.5	81.1

A baldy Homeland bull with a great API. I think this bull will make fantastic daughters to build a fancy herd.



M294 Sells as Lot 15.

15 LF MOHAMED M294 ØGGP
 Homozygous Black || Homozygous Polled 3/4 SM 1/4 AN
 BD: 2/12/2024 Bull ASA# 4473119

44 BRAGGING RIGHTS 4372
HOOK'S JOURNEY 7J
 HOOK'S EVITA 18E
 BRIDLE BIT GPS H078
LF KAMERON
 LF HELENA

CE	BW	WW	YW	MCE	MILK	MWW	STAY
18.0	-4.8	79.5	117.1	8.8	23.0	62.6	19.6
DOC	CW	YG	MARB	BF	REA	\$API	\$TI
10.8	33.7	-0.14	0.66	-0.042	0.43	173.7	95.7

A Hooks Journey bull with extremely high calving ease numbers and an impressive 174 API. Then look at his body confirmation. He has it all!



M288 Sells as Lot 16.

16 LF MADDOX M288 ØGGP
 Homozygous Black || Homozygous Polled PB SM
 BD: 1/25/2024 Bull ASA# 4473105

TJ GOLD 274G
JC MR GOLD RUSH 994J
 BRIDLE BIT MS CHOICE G994
 MR SR HIGHLIFE G1609
LF KINDNESS
 TJ 31G

CE	BW	WW	YW	MCE	MILK	MWW	STAY
21.7	-6.4	57.8	85.8	10.5	24.2	53.0	22.1
DOC	CW	YG	MARB	BF	REA	\$API	\$TI
9.7	1.3	-0.37	0.28	-0.033	0.81	171.8	81.4

This moderately framed bull is perfect for heifers. Extreme calving ease and a smooth but powerful phenotype. He's the one!

17 LF MEASURE UP M61 3/4 GGP

Red || Homozygous Polled 3/4 SM 3/16 AR 1/16 AN
 BD: 3/17/2024 Bull ASA# 4473131

MR SR RED OCTOBER G1761

KBHR CHARGER K102

WS ELECTRA E88

GW RED RIVER 722G

DHCC RED RIVER J171

DHCC CONQUEST Z025

CE	BW	WW	YW	MCE	MILK	MWW	STAY
20.4	-5.7	63.7	100.5	9.9	25.6	57.4	21.9
DOC	CW	YG	MARB	BF	REA	\$API	\$TI
14.6	8.6	-0.34	0.30	-0.056	0.62	159.9	80.3

His name is Measure Up and this bull certainly does. He has top ranked calving ease, birth weight and API EPD numbers. Check him out!



M61 Sells as Lot 17.

18 LF MOOSE M975 3/4 GGP

Black || Polled PB SM
 BD: 3/8/2024 Bull ASA# 4473148

HOOK'S BEACON 56B

CLRS GUARDIAN 317G

CLRS ALWAYS XCELLENT

LF LONGSHOT

LF GRETA

LF ARCHIES HUMMER

CE	BW	WW	YW	MCE	MILK	MWW	STAY
11.2	-2.2	74.8	107.5	4.2	17.6	54.8	18.8
DOC	CW	YG	MARB	BF	REA	\$API	\$TI
3.0	37.0	-0.32	0.46	-0.047	0.99	159.7	88.8

The only Guardian bull we have and he's a good one. Big and powerful. He will produce calves that really grow.



M975 Sells as Lot 18.

19 LF MERLIN M144 3/4 GGP

Black || Polled 3/4 SM 1/4 AN
 BD: 3/26/2024 Bull ASA# 4473091

HHS MR ENTOURAGE 867B

LCDR RESERVE 210J

LCDR MS ECHO 43E

LF CACTUS JACK

LF JASMINE

TJ 119E

CE	BW	WW	YW	MCE	MILK	MWW	STAY
7.1	3.4	93.3	133.0	5.3	23.1	69.6	17.2
DOC	CW	YG	MARB	BF	REA	\$API	\$TI
14.7	49.2	-0.20	0.31	-0.035	0.86	125.8	83.9

A three-quarter Reserve bull that does everything right. Lot 19 is from a powerful cow family with a genotype to back up the growth and muscle he has.



M144 Sells as Lot 19.

20 LF MARLEY M141 3/4 GGP

Homozygous Black || Homozygous Polled 3/4 SM 1/4 AN
 BD: 2/29/2024 Bull ASA# 4473088

CCR COWBOY CUT 5048Z

WS PROCLAMATION E202

WS MISS SUGAR C4

LF SLINGSHOT

LF JOY

/NABE SABBLE 346G

CE	BW	WW	YW	MCE	MILK	MWW	STAY
7.1	2.9	90.9	140.6	6.7	22.2	67.7	20.1
DOC	CW	YG	MARB	BF	REA	\$API	\$TI
18.2	47.3	0.01	0.48	0.000	0.46	141.8	86.8

This cow bull, out of a well proven sire will raise high weaning weight calves with great docility. Proclamation bulls have good growth, an ideal look and are great bulls.



M141 Sells as Lot 20.



M321 Sells as Lot 21.

21 LF MARINER M321 XGGP
 Black || Polled PB SM
 BD: 3/8/2024 Bull ASA# 4473123

TJ HEISMAN 388F
KBHR SWEETNESS H185
 WS MISS SUGAR C4

LF POWER TIME
LF ADORABLE
 LF LASSIE

CE	BW	WW	YW	MCE	MILK	MWW	STAY
7.8	1.6	75.3	118.9	7.1	24.0	61.5	15.3
DOC	CW	YG	MARB	BF	REA	\$API	\$TI
12.5	39.7	-0.29	0.44	-0.070	0.76	142.3	84.7

This is the only Sweetness bull in the sale. He offers big time growth along with strong calving ease and eye appeal.



LCDR RESERVE 210J Sire of Lot 22.

22 LF MADE IN AMERICA M121
 Black || Polled 3/4 SM 1/4 AN
 BD: 3/29/2024 Bull ASA# 4473164

HHS MR ENTOURAGE 867B
LCDR RESERVE 210J
 LCDR MS ECHO 43E

TRIPLE C ACHIEVER
LF LASSIE
 523

CE	BW	WW	YW	MCE	MILK	MWW	STAY
8.4	2.3	89.4	140.8	6.7	24.2	68.7	15.5
DOC	CW	YG	MARB	BF	REA	\$API	\$TI
13.0	45.3	-0.29	0.26	-0.038	1.09	132.2	85.0

A Reserve bull with many things to like. He will make a great commercial man's bull.



M131 Sells as Lot 23.

23 LF MACK M131 XGGP
 Heterozygous Black || Homozygous Polled PB SM
 BD: 4/12/2024 Bull ASA# 4473090

CDI MAVERICK 335B
DHCC NAVIGATOR 124J
 PELTON MISS ASHLYN 0872U

BRIDLE BIT ECLIPSE E744
LF JONNA
 CLRS GUARANTEE 914G

CE	BW	WW	YW	MCE	MILK	MWW	STAY
14.3	-1.0	82.2	126.9	6.8	26.6	67.6	20.7
DOC	CW	YG	MARB	BF	REA	\$API	\$TI
11.7	36.1	-0.24	0.49	-0.040	0.77	171.2	94.2

Check out the outcross pedigree of this red bull and his excellent EPD's. Take a good long look at him.



M4 Sells as Lot 24.

24 LF MARVIN M4 XGGP
 Heterozygous Black || Homozygous Polled PB SM
 BD: 4/12/2024 Bull ASA# 4473084

CDI MAVERICK 335B
DHCC NAVIGATOR 124J
 PELTON MISS ASHLYN 0872U

W/C EXECUTIVE ORDER 8543B
OMF DANI D70
 HOOKS ANGEL 11A

CE	BW	WW	YW	MCE	MILK	MWW	STAY
14.5	-2.0	73.6	112.3	7.6	25.5	62.2	21.2
DOC	CW	YG	MARB	BF	REA	\$API	\$TI
11.2	23.5	-0.40	0.26	-0.067	0.92	158.9	85.1

Here's a black bull carrying the red gene out of my Executive Order donor cow. If you're a breeder thinking about a new red outcross bloodline, here's a wonderful opportunity.

25 LF MIGHTY MAN M721 ♂GGP

Black || Polled 5/8 SM 3/8 AN
 BD: 4/8/2024 Bull ASA# 4473163

LF CLYDE

W/C EXECUTIVE ORDER 8543B

TJ 99D

LF EMMA

W/C LOCK N LOAD 8771Z

LF LASSIE

CE	BW	WW	YW	MCE	MILK	MWW	STAY
12.3	-1.1	62.6	96.1	5.0	22.8	54.0	17.9
DOC	CW	YG	MARB	BF	REA	\$API	\$TI
10.4	18.3	-0.29	0.20	-0.060	0.55	125.7	69.7

This bull will make a good commercial man's bull. You will like the body confirmation he puts in his calves.



M721 Sells as Lot 25.

26 LF MARCO M71 ♂GGP

Red || Homozygous Polled 5/8 SM 3/8 AR
 BD: 4/25/2024 Bull ASA# 4473097

DHCC NAVIGATOR 124J

CDI MAVERICK 335B

PELTON MISS ASHLYN 0872U

LELAND FRANKLY 018-7520

DHCC FRANKLY J113

DHCC YUKON B422

CE	BW	WW	YW	MCE	MILK	MWW	STAY
11.3	-0.3	77.3	116.4	6.4	27.5	66.1	18.6
DOC	CW	YG	MARB	BF	REA	\$API	\$TI
10.4	34.3	-0.39	0.28	-0.070	1.00	135.3	80.6

A strong Simmental Red Angus bull. Carrying the increased heterosis will offer an opportunity.



M71 Sells as Lot 26.

27 LF MANUEL M04 ♂GGP

Homozygous Black || Homozygous Polled 5/8 SM 3/8 AN
 BD: 5/1/2024 Bull ASA# 4473107

RYMO TEARDROP MONEY U42H

TJ TEARDROP 783F

RYMO SHEZ SPARTAN MONEY 242F

CDI INNOVATOR 325D

LF HELENA

OMF DANI D70

CE	BW	WW	YW	MCE	MILK	MWW	STAY
14.1	-2.3	69.7	105.5	6.4	23.4	58.2	13.5
DOC	CW	YG	MARB	BF	REA	\$API	\$TI
11.6	38.1	-0.25	0.23	-0.055	0.73	126.0	76.5

A five-eighths percentage bull with great calving ease and birth EPD's. A lot to like here.



M04 Sells as Lot 27.

28 LF MARTIN M022 ♂GGP

Black || Homozygous Polled PB SM
 BD: 5/14/2024 Bull ASA# 4473111

LF RAMPAGE

CDI INNOVATOR 325D

WHF CIERRA 245C

TJ TURBO 941F

LF HEATHER

TJ 43C

CE	BW	WW	YW	MCE	MILK	MWW	STAY
12.5	-1.3	68.1	101.1	6.2	29.7	63.7	16.5
DOC	CW	YG	MARB	BF	REA	\$API	\$TI
12.9	28.5	-0.27	0.13	-0.056	0.67	134.7	76.9

A commercial man's dream bull.



M022 Sells as Lot 28.



M011 Sells as Lot 29.

29 LF MARIO M011 XGGP
 Black || Polled PB SM
 BD: 5/7/2024 Bull ASA# 4473103

CDI INNOVATOR 325D
LF RAMPAGE WHF CIERRA 245C
 LF JUSTIFY
LF HANNAH LF DREAMERS GUN

CE	BW	WW	YW	MCE	MILK	MWW	STAY
8.0	1.8	86.5	135.1	5.6	21.2	64.4	15.4
DOC	CW	YG	MARB	BF	REA	\$API	\$TI
10.0	43.0	-0.32	0.35	-0.055	0.99	142.1	88.9

Be sure to mark this bull down on your list of bulls to take home.



M69 Sells as Lot 30.

30 LF MILES M69 XGGP
 Black || Homozygous Polled 5/8 SM 3/8 AN
 BD: 4/14/2024 Bull ASA# 4473114

W/C EXECUTIVE ORDER 8543B
LF CLYDE TJ 99D
 TJ HIGH BET 236X
TJ 70A TJ 132Y

CE	BW	WW	YW	MCE	MILK	MWW	STAY
14.9	-3.5	61.0	87.7	7.1	23.1	53.4	18.3
DOC	CW	YG	MARB	BF	REA	\$API	\$TI
12.2	8.7	-0.27	0.23	-0.023	0.66	134.5	72.5

Here's a bull from one of my favorite cows. She always has a special one.



M149 Sells as Lot 31.

31 LF MUNK M149 XGGP
 Black || Homozygous Polled 5/8 SM 3/8 AN
 BD: 4/20/2024 Bull ASA# 4473089

W/C EXECUTIVE ORDER 8543B
LF CLYDE TJ 99D
 LF CACTUS JACK
LF JANANE LF ZIN

CE	BW	WW	YW	MCE	MILK	MWW	STAY
9.3	0.6	68.9	99.4	2.2	20.3	54.6	15.6
DOC	CW	YG	MARB	BF	REA	\$API	\$TI
12.3	29.2	-0.13	0.15	-0.027	0.45	112.0	68.4

Buy him. You will never be disappointed.



WBF RL DEETS H126 Sire of Lot 32.

32 WBF DEETS M094 XGGP
 Black || Polled 5/8 SM 3/8 AN
 BD: 3/2/2024 Bull ASA# 4353879

TNT WIDE RANGE E324
WBF RL DEETS H126 WBF LUCY E251
 KBHR HIGHWAY G076
WBF MERRIAM K298 WBF MERRIAM G614

CE	BW	WW	YW	MCE	MILK	MWW	STAY
14.0	-0.1	89.0	149.9	8.4	28.5	73.2	14.9
DOC	CW	YG	MARB	BF	REA	\$API	\$TI
17.5	57.8	-0.17	0.21	-0.017	1.04	133.7	86.2

A very tame, deep-bodied, complete bull with great growth.

33

LF MIKE M41

ØGGP

Black || Polled 3/4 SM 1/4 AN
 BD: 4/19/2024 Bull ASA# 4473155

CDI INNOVATOR 325D

LF RAMPAGE

WHF CIERRA 245C

COLBURN PRIMO 5153

/NABE SABLE 346G

B3C REBA'S LUCKY BUTT

CE	BW	WW	YW	MCE	MILK	MWW	STAY
10.3	1.2	68.9	112.3	6.7	21.4	55.9	14.8
DOC	CW	YG	MARB	BF	REA	\$API	\$TI
12.9	42.3	-0.18	0.38	-0.049	0.60	126.0	74.8

A three-quarter bull with just the right amount of heterosis. He's a bold-bodied big-footed bull who will sire very attractive calves.



M41 Sells as Lot 33.

34

LF MASTERMIND M909

ØGGP

Black || Polled PB SM
 BD: 4/12/2024 Bull ASA# 4473147

CDI INNOVATOR 325D

LF RAMPAGE

WHF CIERRA 245C

W/C LOCK N LOAD 8771Z

LF GINA

LF GARMA

CE	BW	WW	YW	MCE	MILK	MWW	STAY
10.4	2.5	73.8	112.8	4.6	20.1	56.9	19.8
DOC	CW	YG	MARB	BF	REA	\$API	\$TI
10.6	39.3	-0.30	0.28	-0.054	0.91	143.0	78.7

This guy will make a great commercial bull.



M909 Sells as Lot 34.

35

LF MURPHY M747

ØGGP

Black || Polled 5/8 SM 1/4 CS 1/8 AN
 BD: 3/28/2024 Bull ASA# 4473122

CDI INNOVATOR 325D

LF RAMPAGE

WHF CIERRA 245C

W/C LOCK N LOAD 8771Z

LF EDIE

B747

CE	BW	WW	YW	MCE	MILK	MWW	STAY
8.3	0.7	90.3	146.1	5.9	22.1	67.2	14.6
DOC	CW	YG	MARB	BF	REA	\$API	\$TI
10.6	31.4	-0.27	0.22	-0.053	0.70	124.8	84.8

A blaze faced bull that will throw those nice baldy calves that top the market. Don't miss out!



M747 Sells as Lot 35.

36

LF MELVIN M172

ØGGP

Black || Homozygous Polled 5/8 SM 3/8 AN
 BD: 4/5/2024 Bull ASA# 4473092

TJ TEARDROP 783F

RYMO TEARDROP MONEY U42H

RYMO SHEZ SPARTAN MONEY 242F

TJ 962E

LF JUNE

LF EMMA

CE	BW	WW	YW	MCE	MILK	MWW	STAY
9.1	1.3	76.4	110.5	4.7	22.8	60.9	10.8
DOC	CW	YG	MARB	BF	REA	\$API	\$TI
12.6	42.0	-0.18	0.17	-0.051	0.59	104.9	72.9

A five-eighths bull you have to like. Appreciate his hybrid vigor at its finest.



M172 Sells as Lot 36.



M51 Sells as Lot 37.

37

LF MIND READER M51

GGP

Homozygous Black || Homozygous Polled

5/8 SM 3/8 AN

BD: 4/19/2024

Bull ASA# 4598248

LF INSPIRE

OMF FELIX F42

TJ 16C

NLC EBAUSTINE E59

NLC PROGRESSIVE 40C

NLC BAUSTINE B145

CE	BW	WW	YW	MCE	MILK	MWW	STAY
13.7	-0.9	65.4	98.6	6.9	29.6	62.3	13.4
DOC	CW	YG	MARB	BF	REA	\$API	\$TI
12.7	23.4	-0.10	0.57	-0.019	0.34	138.6	80.5

A five-eighths bull that will do an awesome job making those highly marketable crossbred calves.





M221 Sells as Lot 38.

38

LF MERIT M221

GGP

Homozygous Black || Homozygous Polled 5/8 SM 3/8 AN

BD: 2/4/2024 Cow ASA# 4473145

44 BRAGGING RIGHTS 4372

HOOK'S JOURNEY 7J

HOOK'S EVITA 18E

CLRS GUARDIAN 317G

LF KEISHA

LF LASSIE

CE	BW	WW	YW	MCE	MILK	MWW	STAY
13.2	-2.4	89.6	141.2	7.9	21.2	65.6	17.3
DOC	CW	YG	MARB	BF	REA	\$API	\$TI
6.5	51.7	-0.29	0.57	-0.037	1.15	160.6	97.4

Est. GifEPDs

CE	BW	WW	YW	MCE	MILK	MWW	STAY	DOC	CW	YG	MARB	REA	\$API	\$TI
17.0	-4.0	88.4	136.0	10.2	27.3	71.3	18.6	11.3	47.1	-0.20	0.89	0.95	192.7	108.0

AI bred to HA Magnifique 72L (4196053). Safe to calve 2/14/2026. Lot 38 has tremendous body mass and eye appeal along with great EPDs and an AI calf to start her out as an elite female for your herd!



HOOK'S JOURNEY 7J Sire of Lot 38.

39

LF MINNIE M59

GGP

Black || Polled PB SM

BD: 4/28/2024 Cow ASA# 4473087

CDI INNOVATOR 325D

LF RAMPAGE

WHF CIERRA 245C

WHF GAMBLING GUN 240W

WHF ALL SEXY 185Z

WHF ALL SEXY 185X

CE	BW	WW	YW	MCE	MILK	MWW	STAY
9.3	-0.7	64.8	100.1	5.2	19.2	51.5	15.8
DOC	CW	YG	MARB	BF	REA	\$API	\$TI
10.3	25.9	-0.28	0.25	-0.037	0.79	134.0	75.8

Est. GifEPDs

CE	BW	WW	YW	MCE	MILK	MWW	STAY	DOC	CW	YG	MARB	REA	\$API	\$TI
13.6	-2.5	62.5	95.2	8.0	21.3	52.5	18.2	10.8	12.1	-0.32	0.48	0.76	158.1	82.1

AI bred to JC Gold Rush (3870330). Safe to calve 2/22/2026. This rampage daughter does a lot of things right, bred to JC Gold Rush who will match great on her balance and power.



M59 Sells as Lot 39.



M7 Sells as Lot 40.



TJ TEARDROP 783F Paternal grandsire of Lot 40.

40 LF MOLLY M7

⚡GGP

Black || Homozygous Polled

PB SM

BD: 2/18/2024 Cow ASA# 4473108

TJ RAGE 437H

TJ TEARDROP 783F

TJ 92C

LF HOPE

CDI INNOVATOR 325D

WHF CIERRA 245C

CE	BW	WW	YW	MCE	MILK	MWW	STAY
9.0	0.2	88.8	135.9	5.1	27.4	71.7	15.3
DOC	CW	YG	MARB	BF	REA	\$API	\$TI
13.7	42.1	-0.35	0.51	-0.075	0.93	155.8	97.1

Est. CalFEPDs

CE	BW	WW	YW	MCE	MILK	MWW	STAY	DOC	CW	YG	MARB	REA	\$API	\$TI
10.6	-0.1	89.5	134.0	6.7	25.8	70.4	15.6	12.3	46.0	-0.30	0.33	0.96	146.8	91.6

Bred to LF Money Order (4473153). Safe to calve 3/8/2026. Here is a daughter from TJ Rage that has some power! Great rib and shape sure to turn heads.

41 LF MARTHA M1

⚡GGP

Black || Homozygous Polled

5/8 SM 3/8 AN

BD: 4/13/2024 Cow ASA# 4473085

LF CLYDE

W/C EXECUTIVE ORDER 8543B

TJ 99D

TJ DIANA 155D

TJ MAIN EVENT 503B

TJ 95A

CE	BW	WW	YW	MCE	MILK	MWW	STAY
14.0	-3.2	73.4	98.8	4.4	29.3	65.9	19.1
DOC	CW	YG	MARB	BF	REA	\$API	\$TI
12.5	24.3	-0.12	0.03	-0.033	0.33	125.6	73.8

Est. CalFEPDs

CE	BW	WW	YW	MCE	MILK	MWW	STAY	DOC	CW	YG	MARB	REA	\$API	\$TI
13.1	-1.8	81.8	115.4	6.3	26.7	67.5	17.5	11.7	37.1	-0.18	0.09	0.66	136.6	81.6

Bred to LF Money Order (4473153). Safe to calve 3/13/2026. Here is a natural born calf out of our donor cow Diana. A cow family that hits the mark every time.



M1 Sells as Lot 41.



M11 Sells as Lot 43.

42

LF MYSTIC M247

GGP

Homozygous Black || Homozygous Polled

PB SM

BD: 2/6/2024 Cow ASA# 4473139

WS PROCLAMATION E202

KBHR GLOBAL J138

BAR CK MS X38 106Z

LF RAMPAGE

LF KARLEE

TJ 99D

CE	BW	WW	YW	MCE	MILK	MWW	STAY
11.1	1.4	85.9	134.1	7.9	25.5	68.3	17.5
DOC	CW	YG	MARB	BF	REA	\$API	\$TI
15.4	49.3	-0.25	0.30	-0.041	0.96	147.8	88.4

Est. CalFEPDs

CE	BW	WW	YW	MCE	MILK	MWW	STAY	DOC	CW	YG	MARB	REA	\$API	\$TI
16.0	-2.1	86.5	132.4	10.2	29.5	72.6	18.7	15.7	45.9	-0.18	0.76	0.86	182.7	102.3

AI bred to HA Magnifique 72L (4196053). Safe to calve 2/13/2026. Lot 42 was thought long and hard about if she was going to be allowed on the sale. So much to like about this KBHR Global daughter. Another big time prospect to add to your herd right here!



M247 Sells as Lot 42.

43

LF MODESTA M11

GGP

Red || Homozygous Polled

3/4 SM 7/32 AR 1/32 AN

BD: 3/9/2024 Cow ASA# 4473118

IR IMPERIAL D948

HSF CARDINAL 133G

HSF MISS SKY 59S 64Z

LEACHMAN CADILLAC L025A

ES H67

ES D127

CE	BW	WW	YW	MCE	MILK	MWW	STAY
4.2	0.4	81.4	122.5	5.0	22.5	63.2	19.1
DOC	CW	YG	MARB	BF	REA	\$API	\$TI
13.6	46.2	-0.39	0.34	-0.070	1.14	130.7	81.8

Est. CalFEPDs

CE	BW	WW	YW	MCE	MILK	MWW	STAY	DOC	CW	YG	MARB	REA	\$API	\$TI
8.2	0.0	85.8	127.3	6.6	23.3	66.1	17.5	12.3	48.1	-0.32	0.24	1.07	140.7	86.3

Bred to LF Money Order (4473153). Safe to calve 3/25/2026. Full sister to lots 3 and 4. This flush has done amazing. Powerful heifer here!



HSF CARDINAL 133G Sire of Lot 43.

Cattle Connect Bred Heifers



M911 Sells as Lot 44.

44 LF MIA M911

Black || Polled 3/4 SM 1/4 AN
BD: 4/19/2024 Cow ASA# 4473079

LF RAMPAGE

CDI INNOVATOR 325D

WHF CIERRA 245C

LF GERRI

W/C LOCK N LOAD 8771Z

HRM MS COMFORT ZONE A326

CE	BW	WW	YW	MCE	MILK	MWW	STAY
12.8	-1.4	70.0	110.9	6.3	23.7	58.8	12.6
DOC	CW	YG	MARB	BF	REA	\$API	\$TI
11.2	36.4	-0.30	0.23	-0.060	0.82	130.3	77.9

Est. Calf EPDs

CE	BW	WW	YW	MCE	MILK	MWW	STAY	DOC	CW	YG	MARB	REA	\$API	\$TI
14.7	-1.9	76.3	121.2	7.9	24.0	62.0	16.3	10.4	36.0	-0.28	0.49	0.84	158.4	89.3

AI bred to LF Laser (4350261). Safe to calve 2/26/2026. LF Laser calves have been everything we hoped they would be and more. This baldy heifer bred to Laser will do it too!



M621 Sells as Lot 45.

45 LF MAYA M621

Black || Polled 3/4 SM 1/4 AN
BD: 4/14/2024 Cow ASA# 4473080

LF RAMPAGE

CDI INNOVATOR 325D

WHF CIERRA 245C

LF DEBBIE

W/C LOCK N LOAD 8771Z

LF LASSIE

CE	BW	WW	YW	MCE	MILK	MWW	STAY
11.0	1.4	79.9	122.7	7.9	22.4	62.3	11.8
DOC	CW	YG	MARB	BF	REA	\$API	\$TI
9.6	31.4	-0.28	0.43	-0.039	0.85	127.0	82.8

Est. Calf EPDs

CE	BW	WW	YW	MCE	MILK	MWW	STAY	DOC	CW	YG	MARB	REA	\$API	\$TI
13.8	-0.5	81.2	127.1	8.7	23.3	63.7	15.9	9.6	33.5	-0.27	0.59	0.86	159.6	92.1

AI bred to LF Laser (4350261). Safe to calve 2/16/2026. A lot to love about this cow family. Plenty of cows in our herd from this blood line, well proven.



M26 Sells as Lot 46.

46 LF MESMERIZE M26

Black || Polled 5/8 SM 3/8 AN
BD: 4/15/2024 Cow ASA# 4473157

LF CLYDE

W/C EXECUTIVE ORDER 8543B

TJ 99D

LF GRANNIE

TJ SHARPER IMAGE 809U

VOLZS GRAND SISTER

CE	BW	WW	YW	MCE	MILK	MWW	STAY
9.8	-0.1	68.9	105.5	6.1	23.7	58.0	20.1
DOC	CW	YG	MARB	BF	REA	\$API	\$TI
13.3	18.8	-0.24	0.13	-0.048	0.52	123.8	70.2

Est. Calf EPDs

CE	BW	WW	YW	MCE	MILK	MWW	STAY	DOC	CW	YG	MARB	REA	\$API	\$TI
13.2	-1.3	75.7	118.5	7.8	24.0	61.6	20.1	11.4	27.2	-0.25	0.44	0.69	158.0	85.9

AI bred to LF Laser (4350261). Safe to calve 2/21/2026. Check the STAY on this female, Lot 46 has the balance and look to back it up. Great female!



M614 Sells as Lot 47.

47 LF MUSICIAN M614

Black || Homozygous Polled 5/8 SM 3/8 AN
BD: 5/7/2024 Cow ASA# 4473161

LF INSPIRE

OMF FELIX F42

TJ 16C

LF DORA

W/C LOCK N LOAD 8771Z

CLRWTR DEW DROP XS105H

CE	BW	WW	YW	MCE	MILK	MWW	STAY
13.1	-0.6	63.0	97.2	6.2	22.6	54.1	17.4
DOC	CW	YG	MARB	BF	REA	\$API	\$TI
12.4	19.2	-0.13	0.31	-0.040	0.22	130.6	71.6

Est. Calf EPDs

CE	BW	WW	YW	MCE	MILK	MWW	STAY	DOC	CW	YG	MARB	REA	\$API	\$TI
15.5	-2.4	61.6	93.7	8.5	23.0	53.8	19.0	11.8	8.8	-0.24	0.51	0.47	160.9	81.4

AI bred to JC Gold Rush (3870330). Safe to calve 2/17/2026. We love all of the JC Gold Rush calves that we have calved so far. Be sure to find her sale day.

48

LF MONARCH M812

⚡GGP

Heterozygous Black || Homozygous Polled
BD: 2/7/2024 Cow ASA# 4473150

PB SM

IR IMPERIAL D948

BAR CK RED EMPIRE 9153G

WS MISS NORTHSTAR B180

LRS TURNING POINT 3117A

WHF CIERRA 245C

WHF SIERRA 245S

CE	BW	WW	YW	MCE	MILK	MWW	STAY
8.5	1.7	83.8	131.7	5.7	28.4	70.2	14.5
DOC	CW	YG	MARB	BF	REA	\$API	\$TI
13.1	15.9	-0.54	0.39	-0.067	1.24	144.2	90.5

Est. CalFEPDs

CE	BW	WW	YW	MCE	MILK	MWW	STAY	DOC	CW	YG	MARB	REA	\$API	\$TI
10.3	0.7	87.0	131.9	7.0	26.3	69.6	15.2	12.0	32.9	-0.39	0.27	1.12	140.7	88.2

Bred to LF Money Order (4473153). Safe to calve 3/26/2026. Power and thickness is what this heifer has! An embryo heifer that has stuck out since day one.



M812 Sells as Lot 48.

49

LF MELODY M400

⚡GGP

Black || Polled
BD: 2/21/2024 Cow ASA# 4473102

PB SM

HOOK'S BEACON 56B

KBHR HONOR H060

WS MISS SUGAR C4

TRIPLE C ACHIEVER

LF BEVERLY

LF ABBEYS DOCTOR

CE	BW	WW	YW	MCE	MILK	MWW	STAY
15.2	-1.2	74.6	115.8	7.8	23.1	60.3	19.6
DOC	CW	YG	MARB	BF	REA	\$API	\$TI
7.6	24.7	-0.43	0.08	-0.092	0.83	146.2	80.3

Est. CalFEPDs

CE	BW	WW	YW	MCE	MILK	MWW	STAY	DOC	CW	YG	MARB	REA	\$API	\$TI
13.7	-0.8	82.4	123.9	8.0	23.6	64.7	17.8	9.3	37.3	-0.34	0.11	0.91	141.9	83.1

Bred to LF Money Order (4473153). Safe to calve 3/11/2026. Check out the calving ease this heifer has, it will make for an easy calving cow that still has the grow to perform.



M400 Sells as Lot 49.

50

LF MIDDLE GIRL M612

⚡GGP

Black || Polled
BD: 3/3/2024 Cow ASA# 4473158

PB SM

TJ TEARDROP 783F

TJ RAGE 437H

TJ 92C

W/C LOCK N LOAD 8771Z

LF DAPHNE

LF ARCHDUCHESS

CE	BW	WW	YW	MCE	MILK	MWW	STAY
13.4	0.9	72.6	104.6	4.9	25.6	61.9	18.5
DOC	CW	YG	MARB	BF	REA	\$API	\$TI
14.5	11.6	-0.16	0.13	-0.041	0.22	136.6	75.9

Est. CalFEPDs

CE	BW	WW	YW	MCE	MILK	MWW	STAY	DOC	CW	YG	MARB	REA	\$API	\$TI
12.8	0.3	81.4	118.3	6.6	24.9	65.5	17.2	12.7	30.8	-0.20	0.14	0.61	137.1	80.9

Bred to LF Money Order (4473153). Safe to calve 3/27/2026. Very attractive baldy heifer. TJ Rage has done great for us and this heifer will do the same for you.



M612 Sells as Lot 50.

51

LF MESSENGER M702

⚡GGP

Black || Polled
BD: 3/23/2024 Cow ASA# 4473126

PB SM

TRIPLE C SINGLETARY S3H

CCR COWBOY CUT 5048Z

CCR MS 4045 TIME 7322T

W/C LOCK N LOAD 8771Z

LF EXCITING

WHF TRINITY 24T

CE	BW	WW	YW	MCE	MILK	MWW	STAY
10.7	1.1	72.5	102.0	6.3	18.4	54.6	20.2
DOC	CW	YG	MARB	BF	REA	\$API	\$TI
13.1	21.3	-0.25	0.48	-0.036	0.65	155.3	83.6

Est. CalFEPDs

CE	BW	WW	YW	MCE	MILK	MWW	STAY	DOC	CW	YG	MARB	REA	\$API	\$TI
11.4	0.4	81.4	117.0	7.3	21.3	61.8	18.1	12.0	35.6	-0.25	0.31	0.82	146.3	84.7

Bred to LF Money Order (4473153). Safe to calve 4/9/2026. Here is a CCR Cowboy Cut female with huge STAY and eye appeal.



M702 Sells as Lot 51.

Cattle Connect Bred Heifers



M248 Sells as Lot 52.

52 LF MARVELOUS M248 XGGP

Red || Polled PB SM

BD: 2/6/2024 Cow ASA# 4473144

CDI ABUNDANCE 391C

CDI/NF HONOR GUARD 267H

CDI MISS VERDICT 141C

BAR CK RED EMPIRE 9153G

NF MS EMPIRE K18

NF MISS MACK E747

CE	BW	WW	YW	MCE	MILK	MWW	STAY
11.9	0.1	83.3	133.6	7.8	26.3	67.8	15.5
DOC	CW	YG	MARB	BF	REA	\$API	\$TI
16.1	36.8	-0.49	0.37	-0.077	1.27	151.9	91.7

Est. Calf EPDs

CE	BW	WW	YW	MCE	MILK	MWW	STAY	DOC	CW	YG	MARB	REA	\$API	\$TI
12.0	-0.2	86.8	132.8	8.0	25.2	68.4	15.7	13.5	43.4	-0.37	0.26	1.13	145.0	89.0

Bred to LF Money Order (4473153). Safe to calve 5/10/2026. Lot 52 is an outstanding red heifer. One that will catch your eye in the pen and on paper as well!



M914 Sells as Lot 53.

53 LF MIRACLE M914 XGGP

Black || Polled PB SM

BD: 4/4/2024 Cow ASA# 4473152

CDI INNOVATOR 325D

LF RAMPAGE

WHF CIERRA 245C

LF LONGSHOT

LF GEM

CLRWTR DEW DROP X5105H

CE	BW	WW	YW	MCE	MILK	MWW	STAY
12.1	-1.4	72.9	109.3	7.1	20.2	56.6	15.9
DOC	CW	YG	MARB	BF	REA	\$API	\$TI
11.3	27.2	-0.36	0.24	-0.042	1.02	141.7	82.1

Est. Calf EPDs

CE	BW	WW	YW	MCE	MILK	MWW	STAY	DOC	CW	YG	MARB	REA	\$API	\$TI
14.3	-1.9	77.7	120.4	8.3	22.2	60.9	18.0	10.4	31.4	-0.31	0.50	0.94	164.6	91.2

AI bred to LF Laser (4350261). Safe to calve 2/16/2026. Lot 53 does as lot of things right. LF Laser will be a great match for her.



M255 Sells as Lot 54.

54 LF METICULOUS M255 XGGP

Black || Homozygous Polled 3/4 SM 1/4 AN

BD: 3/28/2024 Cow ASA# 4473137

OMF FELIX F42

LF INSPIRE

TJ 16C

CDI INNOVATOR 325D

LF KAT

WHF CIERRA 245C

CE	BW	WW	YW	MCE	MILK	MWW	STAY
10.1	-1.0	78.3	118.9	6.1	25.9	65.0	9.6
DOC	CW	YG	MARB	BF	REA	\$API	\$TI
12.5	28.5	-0.22	0.27	-0.023	0.77	116.1	80.6

Est. Calf EPDs

CE	BW	WW	YW	MCE	MILK	MWW	STAY	DOC	CW	YG	MARB	REA	\$API	\$TI
11.1	-0.7	84.3	125.5	7.2	25.0	67.0	12.8	11.7	39.2	-0.23	0.21	0.88	133.7	85.8

Bred to LF Money Order (4473153). Safe to calve 5/15/2026. This 3/4 blood heifer is from an embryo calf that has turned into a powerhouse cow for us. Lot 54 will do the same for you.



M326 Sells as Lot 55.

55 LF MELANIE M326 XGGP

Black || Polled PB SM

BD: 6/10/2024 Cow ASA# 4473078

CDI INNOVATOR 325D

LF RAMPAGE

WHF CIERRA 245C

KAPPES HAMMERTIME C505

MS NLC H TIME 7207E

MS NLC F ANSWER Y1013

CE	BW	WW	YW	MCE	MILK	MWW	STAY
12.6	-2.6	71.4	105.8	7.9	23.8	59.4	15.2
DOC	CW	YG	MARB	BF	REA	\$API	\$TI
11.7	20.3	-0.21	0.47	-0.036	0.53	154.4	88.1

Est. Calf EPDs

CE	BW	WW	YW	MCE	MILK	MWW	STAY	DOC	CW	YG	MARB	REA	\$API	\$TI
12.4	-1.5	80.8	118.9	8.1	24.0	64.2	15.6	11.3	35.1	-0.23	0.31	0.76	146.2	87.1

Bred to LF Money Order (4473153). Safe to calve 3/28/2026. Here is a powerful purebred that has the balance and API to be a great addition to your herd.

56

LF MARIA M114

⚡GGP

Black || Homozygous Polled 3/4 SM 1/4 AN
BD: 3/15/2024 Cow ASA# 4473094

REDHILL 672X X004 231A
CLRS HOMELAND 327H
CLRS ALWAYS XCELLENT

LF JILLIAN
LF CACTUS JACK
LF CINDY

CE	BW	WW	YW	MCE	MILK	MWW	STAY
12.9	-0.9	71.2	103.4	6.7	17.5	53.0	19.9
DOC	CW	YG	MARB	BF	REA	\$API	\$TI
11.8	18.0	-0.44	0.27	-0.082	0.86	137.2	76.4

Est. CalFEPDs

CE	BW	WW	YW	MCE	MILK	MWW	STAY	DOC	CW	YG	MARB	REA	\$API	\$TI
12.5	-0.7	80.7	117.7	7.5	20.8	61.0	17.9	11.4	34.0	-0.34	0.21	0.93	144.4	83.7

Bred to LF Money Order (4473153). Safe to calve 3/27/2026. We could write a book about this CLRS Homeland heifer. She does so many things right, powerful and feminine. Be sure to find her.



M114 Sells as Lot 56.

57

LF MILKSHAKE M165

⚡GGP

Red || Homozygous Polled 3/4 SM 5/32 AR 3/32 AN
BD: 4/12/2024 Cow ASA# 4473134

CDI MAVERICK 335B
DHCC NAVIGATOR 124J
PELTON MISS ASHLYN 0872U
WS OUTCROSS C164

ES H62
ES D111

CE	BW	WW	YW	MCE	MILK	MWW	STAY
8.5	3.5	86.7	136.0	3.9	21.6	64.8	14.0
DOC	CW	YG	MARB	BF	REA	\$API	\$TI
13.6	35.7	-0.41	0.07	-0.077	1.01	109.0	75.8

Est. CalFEPDs

CE	BW	WW	YW	MCE	MILK	MWW	STAY	DOC	CW	YG	MARB	REA	\$API	\$TI
10.3	1.6	88.5	134.0	6.1	22.9	66.9	15.0	12.3	42.8	-0.33	0.11	1.00	130.1	83.3

Bred to LF Money Order (4473153). Safe to calve 3/13/2026. A 3/4 red female whose hybrid vigor shows in her thick style.



M165 Sells as Lot 57.

58

LF MABEL M25

⚡GGP

Black || Homozygous Polled 5/8 SM 3/8 AN
BD: 4/3/2024 Cow ASA# 4473106

W/C EXECUTIVE ORDER 8543B
LF CLYDE
TJ 99D
CCR COWBOY CUT 5048Z

TJ 16C
STAR ROSE 569

CE	BW	WW	YW	MCE	MILK	MWW	STAY
13.8	-2.4	67.9	100.2	8.3	27.6	62.2	14.4
DOC	CW	YG	MARB	BF	REA	\$API	\$TI
13.5	13.3	-0.14	0.36	-0.030	0.27	132.5	78.3

Est. CalFEPDs

CE	BW	WW	YW	MCE	MILK	MWW	STAY	DOC	CW	YG	MARB	REA	\$API	\$TI
13.0	-1.4	79.1	116.1	8.3	25.9	65.6	15.2	12.2	31.6	-0.19	0.25	0.63	139.9	83.8

Bred to LF Money Order (4473153). Safe to calve 3/22/2026. Here is 5/8 heifer that has the look and bloodlines to work for you.



M25 Sells as Lot 58.

59

LF MIRACLE M3

⚡GGP

Black || Homozygous Polled 3/4 SM 1/4 AN
BD: 4/25/2024 Cow ASA# 4473149

CDI INNOVATOR 325D
LF RAMPAGE
WHF CIERRA 245C
TJ 962E

LF GRACE
TJ DIANA 155D

CE	BW	WW	YW	MCE	MILK	MWW	STAY
13.8	0.4	83.9	121.8	7.6	27.9	69.8	14.3
DOC	CW	YG	MARB	BF	REA	\$API	\$TI
12.7	27.7	-0.15	0.20	-0.031	0.49	124.7	80.6

Est. CalFEPDs

CE	BW	WW	YW	MCE	MILK	MWW	STAY	DOC	CW	YG	MARB	REA	\$API	\$TI
13.0	0.0	87.1	126.9	7.9	26.0	69.4	15.1	11.8	38.8	-0.20	0.17	0.74	137.7	85.6

Bred to LF Money Order (4473153). Safe to calve 4/19/2026. This 3/4 blood goes back to two of our donor cows on both sides of her pedigree and has the style to match.



M3 Sells as Lot 59.

Cattle Connect Bred Heifers



M708 Sells as Lot 60.

60 LF MACY M708 XGGP
 Black || Polled PB SM
 BD: 3/31/2024 Cow ASA# 4473083

CDI INNOVATOR 325D
LF RAMPAGE WHF CIERRA 245C
 W/C LOCK N LOAD 8771Z

LF ELAINE
 MISS HHF JUST DEW IT

CE	BW	WW	YW	MCE	MILK	MWW	STAY
11.6	0.1	66.4	104.4	5.9	21.2	54.3	18.3
DOC	CW	YG	MARB	BF	REA	\$API	\$TI
11.7	39.4	-0.40	0.26	-0.068	1.10	143.1	77.5

Est. Calf EPDs

CE	BW	WW	YW	MCE	MILK	MWW	STAY	DOC	CW	YG	MARB	REA	\$API	\$TI
11.4	-0.2	73.8	121.9	6.3	25.4	62.2	17.6	9.0	39.3	-0.34	0.51	1.07	157.7	87.6

AI bred to WBF Patton K059 (4060597). Safe to calve 2/23/2026. A powerful pedigree on both sides for this female. Her volume will match perfect with WBF Patton for an awesome calf.



61 LF MICAH M21 XGGP
 Black || Polled 5/8 SM 3/8 AN
 BD: 4/3/2024 Cow ASA# 4473110

W/C EXECUTIVE ORDER 8543B
LF CLYDE TJ 99D

PVF INSIGHT 0129
GONSIOR/GS ELISHA E10
 GONSIOR/WRS LADY UPGRADE

CE	BW	WW	YW	MCE	MILK	MWW	STAY
8.3	0.3	67.5	100.8	4.0	24.2	58.1	14.9
DOC	CW	YG	MARB	BF	REA	\$API	\$TI
11.0	48.5	-0.39	0.00	-0.058	1.27	103.3	65.9

Est. Calf EPDs

CE	BW	WW	YW	MCE	MILK	MWW	STAY	DOC	CW	YG	MARB	REA	\$API	\$TI
10.2	-0.1	78.9	116.4	6.1	24.2	63.6	15.4	11.0	49.2	-0.32	0.07	1.13	125.3	77.7

Bred to LF Money Order (4473153). Safe to calve 3/29/2026. Lot 61 is a feminine, smooth made 5/8 heifer. Will match up well with LF Money Order.



M31 Sells as Lot 62.

62 LF MAIN ADVANTAGE M31 XGGP
 Red || Homozygous Polled PB SM
 BD: 2/24/2024 Cow ASA# 4473165

CDI MAVERICK 335B
DHCC NAVIGATOR 124J
 PELTON MISS ASHLYN 0872U

HOOK'S XPECTATION 36X
CLRS GUARANTEE 914G
 CLRS AFFIRMATION 320 A

CE	BW	WW	YW	MCE	MILK	MWW	STAY
9.8	0.7	93.2	142.4	6.5	26.6	73.1	23.0
DOC	CW	YG	MARB	BF	REA	\$API	\$TI
10.2	52.3	-0.12	0.34	-0.026	0.74	162.3	93.8

Est. Calf EPDs

CE	BW	WW	YW	MCE	MILK	MWW	STAY	DOC	CW	YG	MARB	REA	\$API	\$TI
11.0	0.2	91.7	137.2	7.4	25.4	71.1	19.5	10.6	51.1	-0.18	0.24	0.87	149.7	89.7

Bred to LF Money Order (4473153). Safe to calve 4/19/2026. Out of one of our donor reds, this purebred does it all. An awesome balance of thickness and performance is this heifer.

63 LF MINGLER M73 XGGP
 Black || Polled 5/8 SM 1/4 AN 1/8 CS
 BD: 4/19/2024 Cow ASA# 4473077

CDI INNOVATOR 325D
LF RAMPAGE WHF CIERRA 245C
 W/C LOCK N LOAD 8771Z

LF BAILEY
 LF WINNIE

CE	BW	WW	YW	MCE	MILK	MWW	STAY
10.1	-0.6	68.0	107.8	5.5	22.8	56.7	10.5
DOC	CW	YG	MARB	BF	REA	\$API	\$TI
10.7	29.8	-0.22	0.38	-0.051	0.56	119.7	76.5

Est. Calf EPDs

CE	BW	WW	YW	MCE	MILK	MWW	STAY	DOC	CW	YG	MARB	REA	\$API	\$TI
11.1	-0.5	79.1	119.9	6.9	23.5	62.9	13.2	10.8	39.9	-0.23	0.26	0.78	134.7	83.4

Bred to LF Money Order (4473153). Safe to calve 3/26/2026. This 3/4 blood is a feminine and balanced heifer out of a great cow family.

64 LF MILLY M78 XGGP
 Black || Polled PB SM
 BD: 4/11/2024 Cow ASA# 4473076

CDI INNOVATOR 325D
LF RAMPAGE WHF CIERRA 245C

CDI INNOVATOR 325D
WHF GISELLE 350G
 WHF TRUDY 35Y

CE	BW	WW	YW	MCE	MILK	MWW	STAY
10.9	0.0	81.8	126.6	7.1	24.8	65.6	15.6
DOC	CW	YG	MARB	BF	REA	\$API	\$TI
11.6	27.5	-0.46	0.22	-0.067	1.14	141.0	86.3

Est. Calf EPDs

CE	BW	WW	YW	MCE	MILK	MWW	STAY	DOC	CW	YG	MARB	REA	\$API	\$TI
11.5	-0.2	86.0	129.3	7.7	24.5	67.3	15.8	11.3	38.7	-0.35	0.18	1.07	139.3	86.1

Bred to LF Money Order (4473153). Safe to calve 3/27/2026. Here is a nice purebred heifer that is from a consistent cow family.

65

LF MARCY M130

GGP

Red || Homozygous Polled PB SM
BD: 4/26/2024 Cow ASA# 4473099

CDI MAVERICK 335B
DHCC NAVIGATOR 124J
PELTON MISS ASHLYN 0872U

WS ALL ABOARD B80
KBHR RED ROSE G199
KBHR D050

CE	BW	WW	YW	MCE	MILK	MWW	STAY
11.5	0.6	77.0	117.0	7.1	22.5	60.9	18.0
DOC	CW	YG	MARB	BF	REA	\$API	\$TI
12.5	35.6	-0.38	0.35	-0.062	1.03	149.7	85.3

Est. Calf EPDs

CE	BW	WW	YW	MCE	MILK	MWW	STAY	DOC	CW	YG	MARB	REA	\$API	\$TI
11.8	0.1	83.6	124.5	7.7	23.3	65.0	17.0	11.7	42.8	-0.31	0.25	1.01	143.9	85.7

Bred to LF Money Order (4473153). Safe to calve 4/12/2026. This red purebred heifer has the API and balance to do some great things.



M130 Sells as Lot 65.

66

LF MERCEDES M177

GGP

Black || Homozygous Polled 3/4 SM 1/4 AN
BD: 3/17/2024 Cow ASA# 4473095

TJ HEISMAN 388F
KBHR SWEETNESS H185
WS MISS SUGAR C4

TJ 962E
LF JACEY
LF EVER KNOWN

CE	BW	WW	YW	MCE	MILK	MWW	STAY
13.9	-1.3	73.1	108.3	7.7	26.7	63.1	14.5
DOC	CW	YG	MARB	BF	REA	\$API	\$TI
13.6	38.8	-0.15	0.45	-0.030	0.62	138.0	82.4

Est. Calf EPDs

CE	BW	WW	YW	MCE	MILK	MWW	STAY	DOC	CW	YG	MARB	REA	\$API	\$TI
13.0	-0.9	81.7	120.2	8.0	25.4	66.1	15.2	12.3	44.4	-0.20	0.30	0.81	144.7	86.7

Bred to LF Money Order (4473153). Safe to calve 3/14/2026. This smooth made KBHR Sweetness daughter has a balanced phenotype and a proven pedigree to fit.



M177 Sells as Lot 66.

67

LF MANDY M191

GGP

Black || Homozygous Polled PB SM
BD: 3/23/2024 Cow ASA# 4473096

HHS MR ENTOURAGE 867B
LCDR RESERVE 210J
LCDR MS ECHO 43E

LF SLINGSHOT
LF JACKIE
LF GEM

CE	BW	WW	YW	MCE	MILK	MWW	STAY
14.5	-0.6	77.6	111.9	7.6	22.6	61.3	20.8
DOC	CW	YG	MARB	BF	REA	\$API	\$TI
16.1	27.0	-0.25	0.36	-0.028	0.80	160.5	86.9

Est. Calf EPDs

CE	BW	WW	YW	MCE	MILK	MWW	STAY	DOC	CW	YG	MARB	REA	\$API	\$TI
15.5	-1.5	80.1	121.7	8.5	23.4	63.2	20.4	12.8	31.3	-0.26	0.56	0.83	171.1	92.4

AI bred to LF Laser (4350261). Safe to calve 2/25/2026. Make sure to find this LCDR Reserve daughter. She has the numbers and power to make a fantastic cow.



M191 Sells as Lot 67.

68

LF MISTY M214

GGP

Homozygous Black || Homozygous Polled PB SM
BD: 2/18/2024 Cow ASA# 4473138

WS PROCLAMATION E202
KBHR GLOBAL J138
BAR CK MS X38 106Z

CCR SANTA FE 9349Z
LF KEEPSAKE
LF DORA

CE	BW	WW	YW	MCE	MILK	MWW	STAY
13.1	-1.0	77.6	113.4	9.2	19.8	58.5	19.7
DOC	CW	YG	MARB	BF	REA	\$API	\$TI
11.2	30.8	-0.37	0.12	-0.074	0.87	145.1	81.6

Est. Calf EPDs

CE	BW	WW	YW	MCE	MILK	MWW	STAY	DOC	CW	YG	MARB	REA	\$API	\$TI
12.6	-0.7	83.9	122.7	8.7	22.0	63.8	17.8	11.1	40.4	-0.31	0.13	0.93	141.1	83.7

Bred to LF Money Order (4473153). Safe to calve 5/20/2026. Lot 68 is an outstanding KBHR Global daughter. Deep bodied, smooth made, and amazing STAY.



M214 Sells as Lot 68.

Cattle Connect Bred Heifers



69

LF MOCKING BIRD M746

♂GGP

Black || Polled

PB SM

BD: 4/9/2024 Cow ASA# 4473127

CDI INNOVATOR 325D

LF RAMPAGE

WHF CIERRA 245C

LF LONGSHOT

LF ENDLESS

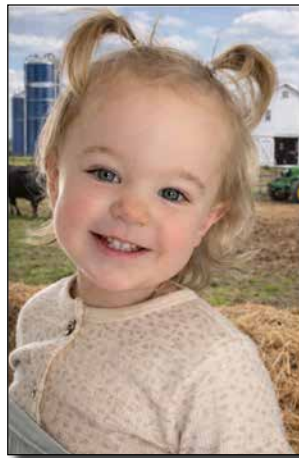
NPC MISS GRAND FORCE

CE	BW	WW	YW	MCE	MILK	MWW	STAY
13.6	-0.5	62.5	90.9	5.3	21.2	52.4	17.3
DOC	CW	YG	MARB	BF	REA	\$API	\$TI
9.6	16.5	-0.39	0.23	-0.054	0.89	140.0	74.8

Est. Calf EPDs

CE	BW	WW	YW	MCE	MILK	MWW	STAY	DOC	CW	YG	MARB	REA	\$API	\$TI
12.9	-0.5	76.4	111.5	6.8	22.7	60.7	16.6	10.3	33.2	-0.32	0.19	0.94	139.1	80.6

Bred to LF Money Order (4473153). Safe to calve 4/19/2026. Here is a feminine, calving ease heifer out of a great cow.



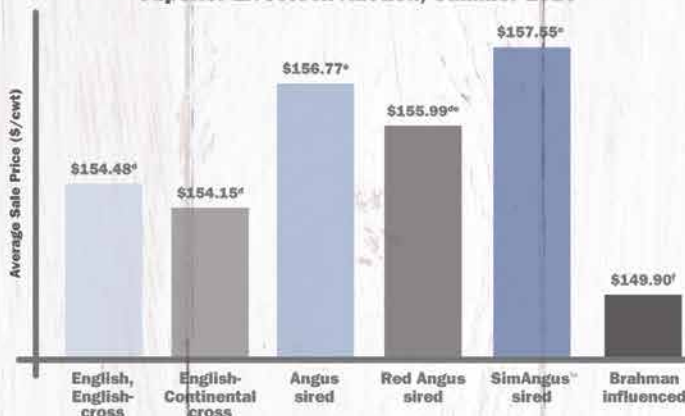
**A BIG
THANK YOU**
and God bless everyone.

MORE PER HEAD PERIOD



SimGenetics
PROFIT THROUGH SCIENCE
American Simmental Association

EFFECT OF SIRE BREED ON SALE PRICE OF BEEF STEER CALVES Superior Livestock Auction, Summer 2020^c



SimAngus™-sired steer calves sold through Superior Livestock Auction in summer 2020 earned **more at sale time** than all other calves.^b

It's no wonder the percentage of **SimAngus™** calves marketed through the industry's largest video auction has grown **eightfold** since 2010.

Want low-risk, high-potential calves with earning potential?

STAND STRONG SIMMENTAL

406-587-4531 • simmental.org

^a For lots of 50 head or more. ^b Kansas State University, December 2020, Superior Livestock Auction data analysis of 3,280 lots, 394,900 head of beef calves marketed during summer 2020. (P<.0001)
^c Lots that qualified for breed-related programs were excluded from the model due to potential confounding effects with sire breed analysis and, for many, few lots in the data.
^{d, e, f} Means without a common superscript differ (P<0.05) Lots of calves in breed-identified groups were sired by bulls from the respective breeds and out of dams with no Brahman influence.

Note from the Sale Manager

It is our pleasure to be working with Franzen Simmentals again this year for the 2026 edition of the Cattle Connect Sale. This is the best set of bulls and females they have offered to date. The bulls are age advantaged and have been developed slowly with optimum longevity in mind. With higher bull prices at sales around the country, it makes sense to purchase one of these two-year-old bulls to cover more cows with less chance of injury. Bulls like these give cattlemen the most bang for their buck. The bred heifers are exceptional again this year. Many are AI bred to some of the top sires in the business today. With these record high prices in all segments of the cattle industry, including seedstock, it makes sense to purchase age advantage bulls to get more females bred in their first year of service, which equals more bang for your buck.

We are experiencing the best cattle market in history. We continue to see new highs on all class of cattle. The best way to take advantage of this market is with heterosis. With heterosis you get more pounds and efficiency at every segment of the production chain. Not to mention the increased fertility and longevity you get in your cow herd. In this high market getting more females bred and not replacing cows because they last longer is a huge factor to your bottom line. The genetics offered in this sale can be a huge key to your future profitability, so don't miss out on this great opportunity.

As always, please reach out to us on the Allied team if you have questions or need assistance on sale day.

Sincerely,
Jared Murnin - Corey Wilkins - Mary Ropp



ASA QUICK REFERENCE TO EPDS, INDEXES AND \$VALUES

EXPECTED PROGENY DIFFERENCES (EPDS): EPDs are the most accurate and effective tool available for comparing genetic levels. In using EPDs, the difference between two sires' EPDs represents the unit difference expected in the performance of their progeny. For example, if sires A and B have EPDs of +10 and -5, a 15-unit difference would be expected in their progeny (moving from -5 to +10 yields 15 units). Key to using EPDs is knowing in what units they are expressed. For example, if the above case referred to weaning weight EPDs, sire A would be expected to sire 15 pounds more weaning weight than sire B. If calving ease was the trait, sire A would be expected to sire 15 percent more unassisted births in first-calf heifers; in other words, if sire B sired 30 assists in a group of 100 heifers, we would expect sire A to require 15 assists. A percentile-ranking chart is required to determine where a bull's EPDs rank him relative to other bulls in the breed. For more detailed information about EPDs and \$ indexes, visit www.simmental.org.

Listed below are the units in which ASA EPDs are expressed:

ALL-PURPOSE INDEX (API): Dollars per cow exposed under an all-purpose-sire scenario. (See \$ Indexes for more details.)

BACK FAT (BF): Inches of carcass backfat at 475 days.

BIRTH WEIGHT (BW): Pounds of birth weight.

CALVING EASE (CE): Percent of unassisted births when used on heifers.

CARCASS WEIGHT (CW): Pounds of carcass weight at 475 days.

STAYABILITY (STAY): Percent of daughters remaining in the cow herd at 6 years of age.

DOCILITY (DOC): Percent of offspring receiving a disposition score of 1 (docile).

MATERNAL CALVING EASE (MCE): Percent of unassisted births in first-calving daughters.

MILK (MLK): Pounds of weaning weight due to milk.

MARBLING (MARB): Carcass marbling score at 475 days.

MATERNAL WEANING WEIGHT (MWW): Pounds of weaning weight due to milk and growth.

RIBEYE AREA (REA): Square inches of carcass ribeye at 475 days.

TERMINAL INDEX (TI): Dollars per cow exposed under a terminal-sire scenario. (See TI for more details.)

WEANING WEIGHT (WW): Pounds of weaning weight.

YEARLING WEIGHT (YW): Pounds of yearling weight.

YIELD GRADE (YG): Carcass yield grade score at 475 days.

\$ INDEXES: Though EPDs allow for the comparison of genetic levels for many economically important traits, they only provide pieces of the economic puzzle. This is where \$ indexes come in.

Through well-conceived, rigorous mathematical computation, \$ indexes blend EPDs and economics to estimate an animal's overall impact on integrated commercial production. The same technology that led to the dramatic progress in swine, poultry and dairy genetics over the last several decades was used to develop the following \$ indexes:

ALL-PURPOSE INDEX (API): Evaluates sires for use on the entire cow herd (bred to both Angus first-calf heifers and mature cows) with the portion of their daughters required to maintain herd size retained and the remaining heifers and steers put on feed and sold grade and yield.

TERMINAL INDEX (TI): Evaluates sires for use on mature Angus cows with all offspring put on feed and sold grade and yield.

USING API AND TI: First, determine which index to use; if you are keeping replacements use API, if not, use TI. Then, just as with EPDs, zero in on the unit difference between bulls. (As described above, index units are in dollars per cow exposed.) The difference can be used to determine how much a bull is worth compared to another. Put another way, how much you can pay for one bull compared to another. For example, when buying an all-purpose-type sire, you can quickly figure a bull scoring +100 for API is worth an extra \$6,000 over a +50 bull if both are exposed to 30 cows over 4 years (\$50 diff. x 30 hd. x 4 yr.= \$6,000). A percentile-ranking chart is required to determine where a bull's index value ranks him relative to other bulls in the breed.

For more detailed information about EPDs and \$ indexes, visit: www.simmental.org Important disclaimer: DO NOT compare index values of purebreds of different breeds, hybrids of different breed composition or purebreds with hybrids - our system was not developed to make valid comparison among these groups. Therefore, you must first determine the breed and breed composition appropriate for your herd and use index values to compare animals within that population.

2026 PUREBRED SIMMENTAL PERCENTILE TABLE

%	CE	BW	WW	YW	ADG	DMI	\$GN	MCE	MILK	MWW	STAY	DOC	CW	YG	MARB	BF	REA	API	TI
1	19.50	-4.00	105.80	165.70	0.39	-0.17	0.11	11.00	36.80	81.80	22.80	18.70	64.30	-0.58	0.81	-0.13	1.37	188.40	107.10
2	18.20	-3.30	102.60	160.20	0.37	-0.09	0.10	10.30	35.10	79.70	21.90	17.70	60.50	-0.56	0.73	-0.12	1.30	182.00	104.20
3	17.30	-2.90	100.50	156.50	0.36	-0.04	0.10	9.90	34.20	78.30	21.30	17.20	57.90	-0.54	0.68	-0.12	1.26	178.00	102.35
4	16.70	-2.60	99.00	153.80	0.35	0.00	0.09	9.60	33.40	77.20	20.90	16.80	55.80	-0.52	0.64	-0.12	1.23	174.90	100.90
5	16.30	-2.30	97.70	151.50	0.35	0.04	0.09	9.40	32.70	76.40	20.60	16.50	54.30	-0.51	0.60	-0.11	1.21	172.30	99.70
10	14.60	-1.50	93.40	143.80	0.32	0.14	0.08	8.50	30.20	73.50	19.50	15.40	49.30	-0.47	0.49	-0.10	1.13	163.40	95.70
15	13.60	-0.90	90.30	138.60	0.31	0.22	0.07	8.00	28.60	71.50	18.70	14.70	46.00	-0.45	0.42	-0.09	1.07	157.00	93.00
20	12.80	-0.50	88.00	134.50	0.29	0.28	0.06	7.50	27.40	69.90	18.10	14.20	43.40	-0.43	0.36	-0.09	1.03	152.20	90.70
25	12.10	-0.10	86.00	131.00	0.28	0.34	0.06	7.10	26.50	68.50	17.60	13.70	41.20	-0.42	0.32	-0.08	1.00	147.78	88.70
30	11.60	0.30	84.30	127.80	0.27	0.38	0.05	6.80	25.64	67.30	17.00	13.20	39.30	-0.40	0.28	-0.08	0.97	143.90	86.80
35	11.10	0.60	82.70	124.90	0.27	0.43	0.05	6.50	24.90	66.00	16.60	12.80	37.60	-0.39	0.25	-0.08	0.95	140.30	85.10
40	10.60	0.80	81.30	122.10	0.26	0.48	0.05	6.20	24.20	64.90	16.10	12.40	35.90	-0.38	0.22	-0.08	0.92	136.80	83.50
45	10.20	1.10	79.90	119.60	0.25	0.53	0.04	5.90	23.50	63.70	15.60	12.00	34.30	-0.37	0.19	-0.07	0.90	133.30	82.00
50	9.70	1.30	78.70	117.20	0.24	0.58	0.04	5.60	22.90	62.60	15.10	11.60	32.90	-0.36	0.16	-0.07	0.88	129.90	80.60
55	9.30	1.60	77.50	114.90	0.23	0.64	0.04	5.40	22.30	61.50	14.60	11.20	31.50	-0.34	0.14	-0.07	0.86	126.60	79.20
60	8.80	1.80	76.30	112.60	0.23	0.69	0.03	5.10	21.70	60.40	14.00	10.80	30.10	-0.33	0.11	-0.06	0.83	123.50	77.80
65	8.40	2.10	75.20	110.40	0.22	0.75	0.03	4.85	21.10	59.20	13.40	10.40	28.80	-0.32	0.09	-0.06	0.81	120.20	76.40
70	7.90	2.30	73.90	108.00	0.21	0.81	0.02	4.60	20.40	58.10	12.80	10.00	27.40	-0.31	0.06	-0.06	0.78	117.10	75.00
75	7.40	2.60	72.50	105.60	0.20	0.88	0.02	4.30	19.70	56.90	12.10	9.50	25.90	-0.29	0.03	-0.05	0.76	113.80	73.70
80	6.80	2.90	70.90	102.90	0.19	0.96	0.01	3.90	18.90	55.70	11.40	8.90	24.40	-0.28	0.01	-0.05	0.73	110.40	72.30
85	6.00	3.30	69.20	99.80	0.19	1.04	0.01	3.50	18.00	54.40	10.70	8.20	22.60	-0.26	-0.03	-0.05	0.69	107.20	70.90
90	5.10	3.90	67.00	96.00	0.17	1.15	0.00	3.00	16.90	52.80	9.80	7.20	20.40	-0.23	-0.06	-0.04	0.65	103.30	69.00
95	3.50	4.80	63.80	90.30	0.16	1.31	-0.02	2.20	15.20	50.60	8.70	5.60	17.20	-0.19	-0.11	-0.03	0.58	98.30	66.10
AVG	9.70	1.30	78.70	117.20	0.24	0.58	0.04	5.60	22.90	62.60	15.10	11.60	32.90	-0.36	0.16	-0.07	0.88	129.90	80.60

2026 HYBRID PERCENTILE TABLE

%	CE	BW	WW	YW	ADG	DMI	\$GN	MCE	MILK	MWW	STAY	DOC	CW	YG	MARB	BF	REA	API	TI
1	21.50	-5.70	105.20	169.50	0.42	-0.10	0.15	12.10	34.70	81.40	22.70	19.60	72.60	-0.45	1.10	-0.10	1.24	190.03	108.50
2	20.30	-5.00	101.90	163.60	0.40	-0.01	0.14	11.50	33.40	79.20	21.70	18.70	68.10	-0.42	1.00	-0.09	1.17	183.50	105.10
3	19.60	-4.50	99.70	160.10	0.39	0.05	0.13	11.20	32.50	77.90	21.20	18.10	65.60	-0.40	0.93	-0.08	1.13	178.90	103.20
4	19.00	-4.20	98.10	157.00	0.38	0.09	0.12	10.90	31.90	76.90	20.70	17.60	63.40	-0.39	0.88	-0.08	1.09	175.60	101.60
5	18.50	-3.95	96.80	154.60	0.37	0.13	0.12	10.60	31.30	76.10	20.30	17.30	61.80	-0.38	0.85	-0.08	1.07	173.00	100.40
10	16.90	-3.00	92.30	146.80	0.35	0.26	0.10	9.80	29.50	73.20	19.10	16.20	56.30	-0.34	0.74	-0.07	0.97	164.40	96.20
15	15.80	-2.40	89.30	141.60	0.33	0.35	0.09	9.30	28.30	71.10	18.30	15.40	52.50	-0.31	0.67	-0.06	0.91	158.30	93.50
20	14.90	-1.90	87.00	137.50	0.32	0.42	0.09	8.80	27.40	69.50	17.70	14.90	49.70	-0.29	0.61	-0.06	0.87	153.60	91.30
25	14.20	-1.50	85.00	134.00	0.31	0.49	0.08	8.50	26.60	68.10	17.10	14.40	47.30	-0.27	0.56	-0.05	0.83	149.60	89.50
30	13.50	-1.20	83.30	130.80	0.30	0.55	0.07	8.10	26.00	66.80	16.60	14.00	45.10	-0.25	0.52	-0.05	0.80	146.10	87.90
35	12.97	-0.80	81.60	127.90	0.29	0.61	0.07	7.80	25.30	65.70	16.20	13.60	43.10	-0.23	0.48	-0.04	0.77	142.80	86.40
40	12.40	-0.58	80.10	125.20	0.28	0.67	0.06	7.50	24.80	64.70	15.70	13.20	41.30	-0.21	0.45	-0.04	0.74	139.70	84.90
45	11.90	-0.30	78.70	122.60	0.28	0.73	0.06	7.20	24.20	63.60	15.30	12.90	39.50	-0.20	0.41	-0.04	0.71	136.55	83.50
50	11.40	0.00	77.30	120.00	0.27	0.78	0.05	6.90	23.70	62.60	14.80	12.50	37.80	-0.18	0.38	-0.03	0.68	133.40	82.00
55	10.90	0.30	76.00	117.50	0.26	0.84	0.05	6.60	23.20	61.60	14.30	12.20	36.10	-0.17	0.35	-0.03	0.65	130.30	80.60
60	10.40	0.50	74.60	115.00	0.25	0.90	0.05	6.30	22.69	60.50	13.80	11.85	34.50	-0.15	0.32	-0.03	0.63	126.80	79.20
65	9.90	0.80	73.20	112.40	0.24	0.95	0.04	6.00	22.10	59.40	13.20	11.50	32.70	-0.13	0.29	-0.02	0.60	123.30	77.70
70	9.40	1.10	71.70	109.70	0.23	1.02	0.04	5.70	21.50	58.20	12.60	11.10	30.90	-0.11	0.26	-0.02	0.57	119.60	76.00
75	8.80	1.40	70.00	106.80	0.23	1.08	0.03	5.30	20.80	57.00	11.90	10.60	29.10	-0.09	0.23	-0.01	0.54	115.70	74.37
80	8.20	1.70	68.20	103.60	0.22	1.16	0.02	4.90	20.10	55.70	11.20	10.10	27.10	-0.07	0.19	-0.01	0.50	111.40	72.50
85	7.40	2.10	66.20	99.90	0.21	1.25	0.02	4.50	19.20	54.10	10.30	9.40	24.90	-0.04	0.15	0.00	0.46	106.60	70.50
90	6.50	2.60	63.40	95.60	0.19	1.36	0.01	3.90	18.10	52.20	9.20	8.50	22.10	-0.01	0.11	0.00	0.40	101.10	68.20
95	5.00	3.30	59.40	88.90	0.17	1.53	-0.01	3.10	16.40	49.20	7.80	6.90	17.80	0.04	0.04	0.02	0.31	93.50	64.80
AVG	11.40	0.00	77.30	120.00	0.27	0.78	0.05	6.90	23.70	62.60	14.80	12.50	37.80	-0.18	0.38	-0.03	0.68	133.40	82.00



Lawrence Franzen
1538 Road 3, Leigh, NE 68643

Presorted
First Class
US Postage
PAID
SlateGroup

Please bring this catalog with you to the sale.



Cattle
CONNECT

At Franzen Simmentals

1.20.26
Production Sale

Franzen Sale Facility - Leigh, NE - 1:00 PM CT