

BREEDING FOR THE FUTURE

WILKINSON FARMS SIMMENTALS

THURSDAY

FEBRUARY 20, 2025

1:00 PM CST AT THE C-B SALE FACILITY

4 MILES SOUTH OF THE RANCH, MONTPELIER, NORTH DAKOTA

27TH ANNUAL PRODUCTION SALE



WELCOME TO THE



TERRY AND CATHY SCHLENKER

BREEDING FOR THE FUTURE



AARON, RANDI, DAWSON, QUINN,
CREED AND BANKS SCHLENKER

OPTIMISM

This is a word we may hear a lot over the next few years. Cattle markets once again are paying us for the time we put in. Nationally, cow inventory continues to trend lower at numbers not seen since the 1960s. And the dawning of a new administration taking presidential office with a pro ag, America first vibe to begin a new year and a new era of American exceptionalism.

Yes, optimism is high for beef growers and the time is now to advance your herd forward solidifying your sustainability during these high profit years. What better way to achieve your goals than to invest in Simmental?



JORDAN, SUSAN, ALAURA, JOSHUA,
JOSEPH AND LIBERTY SCHLENKER

Simmentals have proven to be profitable in all sectors of the beef factory, that you and I are a part of, as together we feed the world. Today's American Simmentals offer a universal fit spirit deriving from their transcendent history. Once the new kid on the block, Simmentals have established themselves as the reliable go to for profitability, convenience and an enjoyable eating experience. Simmentals have outgrown a myriad of stigmas for which we at Wilkinson Farms Simmentals have always strived to be at the forefront of breed improvement...now on our fifth decade of genetic excellence. Given our aspiration of, "Breeding for the Future" we have curbed birthweights while maintaining breed-leading growth EPDs resulting in many well known, true curve bending donors and AI sires. We have taken a lead on the change to make carcass a strength in our breed. Focused on maternal -which Simmentals have always been known for- our herd is structured around the cow as the number one priority when it comes to mating decisions leading to many of our home-grown females marketed through past sales who go on to be top producers in their new herds.



CHRISTIAN, CASSIA AND
CYLAN KLEMZ

If I may humbly speak to our commercial cow/calf operator friend who is considering Simmental bulls for the first time: I sense some may gravitate toward SimAngus as a way to ease into Simmental..and that's great. But I urge you not to dismiss our purebred Simmental bulls as an option for you. Studying the metrics will show we have bred a lot of calving ease into our herd. As an additional tool we have reached into the DNA for genomic evaluation which has been incorporated into the EPDs for higher accuracy. Your investment in a PUREBRED BULL gives YOU the advantage of capitalizing on the available heterosis and increasing your cows' productivity by up to 25% when breeding for those first generation, F1 and terminal crossed calves.

Thank you for considering Wilkinson Farms Simmentals as your headquarters for advanced genetics seedstock opportunities. We look forward to visiting with you.


God bless you and your family with a safe and productive year.

AARON SCHLENKER AND EVERYONE AT WILKINSON FARMS SIMMENTALS



GARNET SCHLENKER PICTURED WITH
NIECE, MERCEDES MICHALAK AND
NEPHEW, QUINN SCHLENKER

www.wilkinsonfarmssimmentals.com - eatbeef@daktel.com

Follow us on Facebook - Wilkinson Farms Simmentals 



27TH ANNUAL PRODUCTION SALE

THURSDAY

FEBRUARY 20, 2025 1:00 PM CST AT THE C-B SALE FACILITY 4 MILES SOUTH OF THE RANCH, MONTPELIER, NORTH DAKOTA

SALE DAY PHONES

Terry Schlenker 701-320-2171
Aaron Schlenker 701-269-8271
Jordan Schlenker 701-320-1895
Corey Wilkins 256-590-2487
Jared Murnin 406-321-1542
Cathy Schlenker 701-320-8248

SALE LOCATION

Refer to map on page 4 for google map to our ranch and C-B Sale Facility. SALE LOCATION ADDRESS: 5314 76TH AVE SE, JUD, ND

Directions to WFS Ranch: From Hwy 281, turn west on 49th St SE (on gravel) at the Montpelier sign, then go 6 ½ miles on 49th St SE. Turn right (north) onto our ½ mile L-shape driveway. From West I-94: Take exit 248, turn right to follow the south paved frontage road to the west until it takes a sharp left. Go south 11 miles. When pavement ends and turns into gravel, continue south for 2 miles to the intersection of 73rd Ave and 49th St SE. Turn left and go 3 ½ miles. Turn left (north) at our mailbox onto our driveway.

C-B Sale Facility on sale day: From Gackle – 13 miles east on ND Hwy 46 to 76th Ave SE and north ¾ mile. OR 7 ½ miles west of the Junction of Hwy 281 and Hwy 46, north ¾ mile and right to the C-B Sale Facility.

SALE REPRESENTATIVES

Tracy Harl, Auctioneer 406-469-3852
Jory Boote, *Cattle Business Weekly* 701-789-7047
Mike Ostrem, *TriState Livestock News* 701-208-0164
Russ Danielson, ASA 701-261-2742
Marty Ropp, Allied Genetic Resources 406-581-7835

VIDEOS AND ONLINE BIDDING

Videos available early February at www.wilkinsonfarmssimmentals.com.
Watch the sale and bid online at DV Auction. See page 16.

DVAuction
Broadcasting Real-Time Auctions

IN CASE OF STORMY WEATHER

Visit our Wilkinson Farms Simmentals Facebook page or call the Sale Day Phone Numbers listed on this page.

ANNOUNCEMENTS

- Please register for a bidding number prior to the sale!
- Announcements made sale day and from the auction block, during the sale, take precedence over printed material associated with this sale.
- Wilkinson Farms Simmentals semen retention rights for every bull sold through the Breeding for the Future production sale or off the ranch each year can be found in detail on page 2.
- All cattle sell under the terms and conditions of the American Simmental Association.
- Any cattle going to CANADA will be delivered to the nearest ND/CAN border crossing facility. All costs for testing and export are the responsibility of the buyer.

SALE DISCOUNT

Farm visits are encouraged, at your convenience. Come view our sale offering at the Ranch and get a \$150 discount off of a sale day purchase, BULLS ONLY. We hope to see many of you at the ranch!

LODGING

Comfort Inn 701-252-7125
811 20th St. SW, Jamestown, ND
Hampton Inn 701-952-6500
2400 85th Ave SW, Jamestown, ND 58401
Baymont Inn 701-252-3611
507 25th St. SW, Jamestown, ND

LIABILITY

Any person attending the sale does so at his/her own risk. Neither the sale management, owners, sale facility owners nor any person connected with this sale, assumes any liability, legal or otherwise.

COMPLIMENTARY SALE DAY MEALS

Breakfast refreshments will be available after 9:15 AM for those arriving early to view the cattle. A noon meal is served from 11:30 AM-12:45 PM.

BREEDING FOR THE FUTURE ADVANTAGE

- Feed bulls until April 1st or when we start delivering bulls. After April 1, 2025 we will charge \$3.50/day per animal.
- Test all bulls and guarantee their soundness at delivery.
- BULL DELIVERY: We deliver bulls, free of charge, up to a 200-mile radius of our ranch. \$1.50/mile after 200 miles. Often, we make trips beyond that radius. We will do our best to accommodate each purchase for the most economical delivery and will help to coordinate long-distance transportation. Any buyer who wants us to keep their bull(s), beyond our delivery date, is responsible for pick up and delivery, at the buyer's expense.
- FEMALE DELIVERY: We will help to coordinate deliveries. Bred females need to be removed within 2 weeks after the sale.
- We ultrasound all bulls and all replacement females.
- Wilkinson Farms now has data for their entire herd with 26 years of ultrasound history.
- All sale animals will have genomic-enhanced EPDs and Right Choice evaluations.

LIVESTOCK INSURANCE

Animal injuries or death are the responsibility of the new owners. We highly recommend that you insure your livestock on sale day. Contact information is listed below.

Mark Smith – Liberty Mutual 515-229-5227

SALE MANAGEMENT

Marty Ropp 406-581-7835
Corey Wilkins 256-590-2487
Jared Murnin 406-321-1542
alliedgeneticresources.com

ALLIED
GENETIC RESOURCES

SALE CONTACTS



TERRY SCHLENKER
701-320-2171



AARON SCHLENKER
701-269-8271



JORDAN SCHLENKER
701-320-1895

WILKINSON FARMS SIMMENTALS PUREBRED AVERAGE EPDs

	CE	BW	WW	YW	ADG	MCE	MILK	MWW	STAY	DOC	CW	YG	MARB	REA	\$API	\$TI
EPD	11.5	0.7	90.7	140.2	0.30	6.8	27.1	72.4	18.6	13.9	41.1	-0.30	0.60	0.95	169.1	99.3
RANK	50	35	15	15	15	35	20	15	20	25	20	80	5	30	10	5

WILKINSON FARMS SIMMENTALS HYBRID AVERAGE EPDs

	CE	BW	WW	YW	ADG	MCE	MILK	MWW	STAY	DOC	CW	YG	MARB	REA	\$API	\$TI
EPD	14.7	-0.5	84.6	128.7	0.27	9	29	72	17	13.6	44.9	-0.10	0.80	0.65	167.8	96.9
RANK	30	40	25	35	45	30	45	30	25	35	25	75	10	50	10	10

ABOUT THE CATTLE

VACCINATION SCHEDULE

BULL SHOT RECORDS

- At birth: Inforce
- May 2024: Inforce, BVD One Shot, Vision 7
- Weaning: Bovishield Gold One Shot, Ultra Bac 7 w/Somnus
- Boosted with Bovishield Gold 5, Ultra Bac 7 w/Somnus, Dectomax Injectable, Poured with Clean Up

BRED HEIFER SHOT RECORDS

- December 2024: Scour Bos 9 & poured
- January 2025: Boosted with Scour Bos 9, Virashield VL5, poured with Dectomax, confirmed bred
- Received magnets as yearlings

SEMEN INTEREST

WILKINSON FARMS SIMMENTALS SEMEN RETENTION RIGHTS FOR EVERY BULL SOLD THROUGH THE BREEDING FOR THE FUTURE PRODUCTION SALE OR OFF THE RANCH EACH YEAR ARE AS FOLLOWS:

- 1/2 (one half) semen interest on any bull sold for up to \$25,000.
- 1/3 (one third) semen interest on any bull sold from \$25,001 to \$40,000.
- 1/4 (one quarter) semen interest on any bull sold for over \$40,000.
- If semen sales are made on a Wilkinson Farms Simmentals raised/owned bull, the new bull partner/buyer will receive royalties for sold semen on the applicable bull once expenses are recovered. Such expenses may result from, but are not exclusive to: semen collection(s), housing, trucking, travel expenses, storage fees, etc.
- Wilkinson Farms Simmentals reserves the right to charge sales fees for semen sold which would be reflected on royalty payments of any applicable bull where semen has been collected and sold.
- The action of purchasing a bull from Wilkinson Farms Simmentals by auction, or off the ranch, indicates the buyer assumes the terms of this pre-sale agreement.
- Negotiation of any pre-sale proposals or adjustments to the terms listed previously will close one hour prior to the scheduled sale time.

WILKINSON FARMS SIMMENTALS FAMILY HIGHLIGHTS



The whole Schlenker family was together as Micah & Sofia Schlenker said, "I do" in September 2024.



Terry & Cathy with their 23 grandchildren - September 2024



We were blessed to have welcomed 4 Schlenker grandbabies into our family within a year. Left to right: Azure Michalak - born December 2023 to Mike & Amber, Liberty Schlenker - born in July 2024 to Jordan & Susan, Florence Rose - born in September 2024 to Nathan & Monica, and Cylan Klemz - born in September 2024 to Christian and Cassia.



Thank you to Tim and Jill Curan (grandkids Jack and Faye) of Circle Ranch, located near Lone, CA for graciously hosting Aaron in July during his visit. Circle Ranch and Shasta View Farms teamed up to flush Sweet Sixteen in 2022; selling a featured group of standout sons in their sale this past fall.



A special thank you goes out to our friend, Kody Helland, who has been coming to help our crew for pregnancy ultrasounding the last couple of years.



2024 square bale loading crew.



Aunt Gaye Schlenker and boyfriend, Wes, traveled all the way from Texas to visit North Dakota. They got in on all the fun while our crew processed calves - September 2024



We were honored to have been a joint stop with C-B Charolais on the Stockmen's All Breeds Cattle tour in October 2024

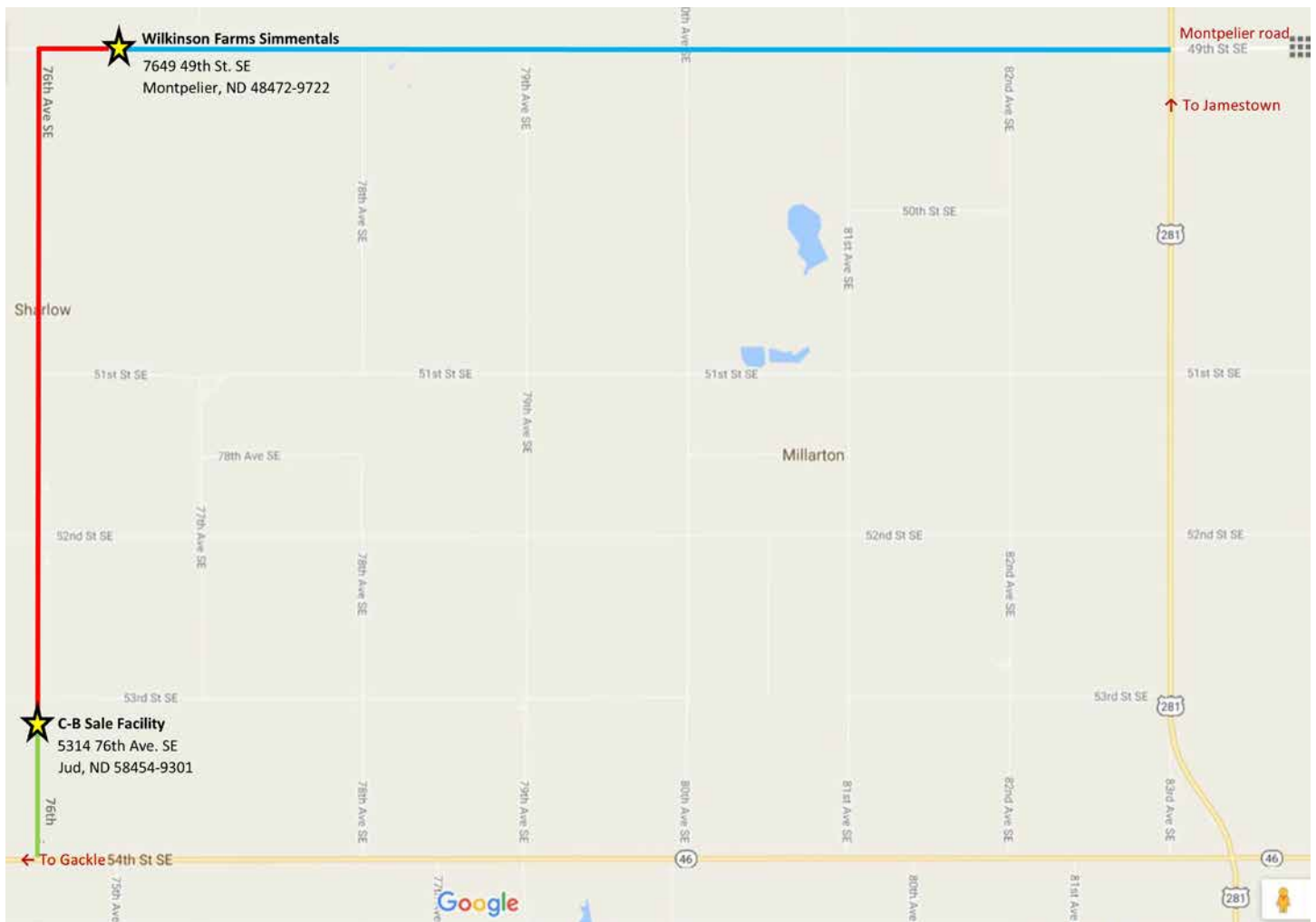


“ Family is not an important thing. It’s EVERYTHING. ” - Micheal J. Fox

WHERE TO FIND IT IN THE BOOK

About the Cattle	2	DV Auction	16	Sale Contacts	2
ASA Quick Reference Guide to EPDs	35	Family Highlights	3	Sale Information	1
Average EPDs of Offering	2	Map to Ranch and Sale Facility	4	Sale Manager Letter	30
Bull Offering	6-30	Percentile Ranking Tables	37	Semen Interest	2
Bred Female Offering	31-35	RightMate and RightChoice	5	Welcome Letter	IFC

RANCH LOCATION AND SALE FACILITY



SALE LOCATION ADDRESS: 5314 76TH AVE SE, JUD, ND

Directions to WFS Ranch: From Hwy 281, turn west on 49th St SE (on gravel) at the Montpelier sign, then go 6 ½ miles on 49th St SE. Turn right (north) onto our ½ mile L-shape driveway. From West I-94: Take exit 248, turn right to follow the south paved frontage road to the west until it takes a sharp left. Go south 11 miles. When pavement ends and turns into gravel, continue south for 2 miles to the intersection of 73rd Ave and 49th St SE. Turn left and go 3 ½ miles. Turn left (north) at our mailbox onto our driveway.

C-B Sale Facility on sale day: From Gackle – 13 miles east on ND Hwy 46 to 76th Ave SE and north ¾ mile. OR 7 ½ miles west of the Junction of Hwy 281 and Hwy 46, north ¾ mile and right to the C-B Sale Facility.

Improved Buying Confidence with Greater Genomic **ASSURANCE**

Access to more and better information has always been key to making wise decisions. The evolution and improvement of genetic evaluation tools too has given us an ever-clearer picture of the true genetic makeup of cattle and thus a better view of the value proposition. RightMate, powered by Top Genomics LLC is taking the evaluation of genetics and genomics one giant step further. By combining specific genomic information with the long-proven value of EPDs, this new advancement in technology improves our depth and precision when evaluating the actual ability to transmit value and profit.

The 3 Accreditation Logos below are designed to simplify bull selection and improve buyer confidence by more accurately describing the genetics offered and by reducing risk. What this means to you as a customer is a much greater assurance that you are getting both what you want and need from the genetics you purchase. What it means to your seedstock provider is access to RightMate technology that simply sets them apart from the rest of the industry.



ACCREDITED GENOMIC PLUS – For the majority of producers who simply need consistent and balanced genetic improvement, without genomic setbacks, G+ Accredited bulls should be on your list for premium purchase. These sires will absolutely move you forward for both cost reduction and income producing traits and substantially reduce risk when compared to all other evaluation programs. It's simple, the right genes are in these bulls to help secure a profitable future and they have great EPDs to match!



ACCREDITED CALVING EASE – Simply find bulls with the ACE logo for third party Accredited, secure Calving Ease bulls. Though we have had tools in the past to assist in choosing heifer bulls, we've never had one nearly this effective. The reduced risk that comes with this genomic certification will simply make your decisions easier and your heifer calving season more successful. Purchase special purpose ACE bulls with confidence. They will deliver consistent and predictable calving ease.



ACCREDITED TERMINAL MATE – Just like an ATM machine makes it simpler to access your cash, the ATM Logo highlights bulls accredited to generate extra cash income as soon as your next calf crop! These bulls are meant specifically to use only on mature cows and for the purpose of adding performance, pay weight and end product value to market.

BREEDING FOR THE FUTURE BULLS



50M Sells as Lot 1.



3M Sells as Lot 2.

1 50M

Red ASA #4364073 Homozygous Polled 50M



PB SM BD: 2/5/2024

Act. BW	Adj. WW	Adj. YW	ADG	MARB	RE	BF	
105	758	1382	3.75	2.72	15.35	0.31	
125	122	123	-	100	121	148	

SIRE IR IMPERIAL D948 DAM WS PRIME BEEF Z8
BAR CK ADMIRAL 0053H WS ELITE E65
 BAR CK MS 4856B 6112D WS MAJESTIC Z133

	CE	BW	WW	YW	MCE	MILK	MWW
EPD	13.9	-0.6	83.7	128.3	9.1	25.9	67.6
RANK	25	20	35	30	10	30	30

	STAY	DOC	CW	YG	MARB	REA	\$API	\$TI
EPD	14.8	15.8	30.6	-0.28	0.74	0.80	171.4	100.2
RANK	60	10	45	90	2	65	10	5

- Powerful Admiral son who is the E65 donor cow's natural calf
- Profile is loaded with 120+ indexes
- Bigger framed bull with a 170 API

2 3M

Red ASA #4363961 Homozygous Polled 3M



PB SM BD: 1/5/2024

Act. BW	Adj. WW	Adj. YW	ADG	MARB	RE	BF	
77	681	1322	3.42	1.66	13.65	0.21	
ET	ET	ET	-	59	106	111	

SIRE HOOK'S EMPIRE 61E DAM WS PRIME BEEF Z8
WS JAM-PACKED 88J WS ELITE E65
 WS ETIQUETTE E131 WS MAJESTIC Z133

	CE	BW	WW	YW	MCE	MILK	MWW
EPD	10.8	2.3	103.5	172.6	6.4	24.2	75.8
RANK	60	70	2	1	45	40	5

	STAY	DOC	CW	YG	MARB	REA	\$API	\$TI
EPD	17.2	10.7	49.7	-0.37	0.30	1.02	154.3	98.6
RANK	35	65	5	60	30	20	20	10

- Bigger framed Jam-packed son out of the great E65 donor cow
- Should sire some real growing calves
- Dam has produced 30 ET calves and has a 114 WW index on her natural calves



7M Sells as Lot 3.



69M Sells as Lot 4.



WS ELITE E65 Dam of Lots 1-4.

3	7M							
	Red ASA #4364038	Homozygous Polled 7M						PB SM BD: 1/12/2024
Act. BW 94 ET	Adj. WW 732 ET	Adj. YW 1293 ET	ADG 3.46 -	MARB 2.77 98	RE 15.06 117	BF 0.31 163		

SIRE HOOK'S EMPIRE 61E DAM WS PRIME BEEF Z8
WS JAM-PACKED 88J WS ELITE E65
 WS ETIQUETTE E131 WS MAJESTIC Z133

EPD	CE	BW	WW	YW	MCE	MILK	MWW
RANK	13.8	1.0	97.5	149.1	8.2	24.2	72.8
	25	45	5	10	20	40	10

EPD	STAY	DOC	CW	YG	MARB	REA	\$API	\$TI
RANK	20.2	13.0	41.3	-0.37	0.45	1.00	169.5	99.7
	10	35	15	60	15	25	10	5

- A favorite all year
- He really exhibits the muscle that Jam-packed puts in his calves
- 10 EPDs in the top 25% of the breed

4	69M							
	Red ASA #4364001	Homozygous Polled 69M						PB SM BD: 2/18/2024
Act. BW 88 ET	Adj. WW 664 ET	Adj. YW 1190 ET	ADG 3.25 -	MARB 1.91 68	RE 12.56 98	BF 0.15 79		

SIRE HOOK'S EMPIRE 61E DAM WS PRIME BEEF Z8
WS JAM-PACKED 88J WS ELITE E65
 WS ETIQUETTE E131 WS MAJESTIC Z133

EPD	CE	BW	WW	YW	MCE	MILK	MWW
RANK	10.9	1.4	92.8	144.8	6.5	24.2	70.5
	60	55	10	10	40	40	20

EPD	STAY	DOC	CW	YG	MARB	REA	\$API	\$TI
RANK	20.3	11.2	47.6	-0.51	0.46	1.14	165.0	97.0
	10	60	10	10	15	10	10	10

- Another tremendous son out of Jam-packed & E65
- This bull just gets better and better every day
- He's a month and a half younger than his full brothers, but you see the potential

BREEDING FOR THE FUTURE

WS Jam-Packed topped our Breeding for the Future sale in 2022 as the standout red bull of the year. His genetic heritability is strong making it easy to pick out his stout built sons in the pen. But they don't stop there. You'll notice his sons bring a confident air about them as they display a small head shape and slick front. You won't easily find another PB red sire group that puts together that build and that much look very often. Co-owned with Keller Broken Heart Ranch.


FOR REFERENCE **WS JAM-PACKED 88J**

ASA #3911959



	CE	BW	WW	YW	MCE	MILK	MWW	STAY	DOC	CW	YG	MARB	REA	\$API	\$TI
EPD	12.9	0.5	94.2	149.2	6.6	22.0	69.0	21.4	16.8	43.5	-0.38	0.52	1.12	175.1	100.1
RANK	35	40	10	10	40	60	20	4	10	15	50	10	10	5	5



38M Sells as Lot 5.

5 38M 
 Red Homozygous Polled PB SM
 ASA #4364066 38M BD: 1/26/2024

Act. BW	Adj. WW	Adj. YW	ADG	MARB	RE	BF
73	708	1255	3.21	1.84	14.29	0.20
95	113	109	-	73	99	91

SIRE HOOK'S EMPIRE 61E DAM BRIDLE BIT HERSCHEL H027
WS JAM-PACKED 88J WS KYLEE K108
 WS ETIQUETTE E131 WS FENELLA F103


	CE	BW	WW	YW	MCE	MILK	MWW
EPD	13.0	1.1	101.5	159.2	7.3	26.8	77.3
RANK	30	50	3	2	30	25	4

	STAY	DOC	CW	YG	MARB	REA	\$API	\$TI
EPD	19.1	14.0	60.6	-0.37	0.59	1.43	175.9	105.8
RANK	15	25	1	60	10	1	4	2


WS Mogul 38M has been a standout from the get go. He has the style, length, depth, and muscle that everyone loves to see in a herd sire.



39M Sells as Lot 6.

6 39M 
 Red Homozygous Polled PB SM
 ASA #4363981 39M BD: 1/26/2024

Act. BW	Adj. WW	Adj. YW	ADG	MARB	RE	BF
71	656	1165	3.03	2.55	13.29	0.16
89	108	101	-	95	105	89



SIRE HOOK'S EMPIRE 61E DAM CDI ABUNDANCE 391C
WS JAM-PACKED 88J WS JAZZI J51
 WS ETIQUETTE E131 WS BEULAH B253

	CE	BW	WW	YW	MCE	MILK	MWW
EPD	16.6	0.5	94.2	147.2	9.5	28.8	75.7
RANK	5	35	10	10	10	15	5

	STAY	DOC	CW	YG	MARB	REA	\$API	\$TI
EPD	21.6	16.4	44.4	-0.43	0.46	1.07	176.9	99.8
RANK	3	10	10	30	15	15	4	5

- Another tremendous Jam-packed calf
- 13 EPDs in the top 15% of the breed
- You're going to like the females out of this guy



7 99M

Red Homozygous Polled PB SM
 ASA #4363953 99M BD: 3/4/2024



Act. BW	Adj. WW	Adj. YW	ADG	MARB	RE	BF	G+	ATM
90 107	645 103	1164 101	3.23 -	2.81 112	14.00 97	0.17 77		

SIRE HOOK'S EMPIRE 61E DAM HOOK'S XPECTATION 36X
WS JAM-PACKED 88J WS LADY DOVE D212
 WS ETIQUETTE E131 WS SCARLET ROSE Z185

	CE	BW	WW	YW	MCE	MILK	MWW	
EPD	10.6	1.5	94.8	141.2	5.0	25.0	72.3	
RANK	65	55	10	15	65	35	15	
	STAY	DOC	CW	YG	MARB	REA	\$API	\$TI
EPD	22.1	16.4	48.2	-0.48	0.54	1.32	172.1	99.6
RANK	2	10	10	15	10	2	10	5

- Our youngest Jam-packed son with top 15% growth EPDs
- He is long and big quartered
- Dam is one of the most beautiful cows on the ranch with a perfect udder



99M Sells as Lot 7

8 29M

Red Homozygous Polled PB SM
 ASA #4364072 29M BD: 1/24/2024



Act. BW	Adj. WW	Adj. YW	ADG	MARB	RE	BF	G+
64 84	668 108	1077 96	2.80 -	2.62 97	12.46 98	0.17 81	

SIRE HOOK'S EMPIRE 61E DAM 9 MILE ABUNDANCE 7507
WS JAM-PACKED 88J WS KATALINA K68
 WS ETIQUETTE E131 WS GILLIANNA G21

	CE	BW	WW	YW	MCE	MILK	MWW	
EPD	14.6	-1.3	87.9	135.5	8.7	24.7	68.5	
RANK	15	15	20	20	15	40	25	
	STAY	DOC	CW	YG	MARB	REA	\$API	\$TI
EPD	21.7	16.6	36.7	-0.31	0.38	0.91	169.5	94.8
RANK	3	10	25	80	20	40	10	15

- Jam-packed son that should calve easy
- 64 lb. BW and 108 WW index
- 10 EPDs in the top 20% of the breed



29M Sells as Lot 8.

9 35M

Red Homozygous Polled PB SM
 ASA #4364026 35M BD: 1/26/2024



Act. BW	Adj. WW	Adj. YW	ADG	MARB	RE	BF	G+	ATM
86 107	651 N/A	1234 N/A	3.15 -	2.15 100	13.69 100	0.26 100		

SIRE HOOK'S EMPIRE 61E DAM CDI DOWNTOWN 400D
WS JAM-PACKED 88J WS MS JAMIE J99
 WS ETIQUETTE E131 WS RED CLOVER C28

	CE	BW	WW	YW	MCE	MILK	MWW	
EPD	11.9	-0.3	90.3	143.1	4.8	24.4	69.4	
RANK	45	25	15	10	70	40	20	
	STAY	DOC	CW	YG	MARB	REA	\$API	\$TI
EPD	23.4	16.2	40.5	-0.41	0.54	1.14	178.7	99.3
RANK	1	10	20	40	10	10	3	5

35M has beat all the odds. After being orphaned in mid-April you would assume that he would have fallen behind, but he still posted a 651 lb. WW and kept on cruising straight into YW at 1234 lbs. He is very well put together and has great foot and leg shape. He is hard to fault. He comes from an excellent cow family and his mother likely would have become a donor in the next couple of years.



35M Sells as Lot 9.

BREEDING FOR THE FUTURE BULLS



28M Sells as Lot 10.

10 28M

Heterozygous Black ASA #4364107 Homozygous Polled 28M



PB SM
BD: 1/24/2024

Act. BW	Adj. WW	Adj. YW	ADG	MARB	RE	BF	G+	ATM
83 107	736 118	1253 109	3.23 -	2.47 98	15.66 109	0.21 95		

SIRE HOOK'S EMPIRE 61E DAM 3C HARMONY 0575H B
WS JAM-PACKED 88J WS KADY K143
 WS ETIQUETTE E131 WS ELITE E65

	CE	BW	WW	YW	MCE	MILK	MWW	
EPD	10.3	2.0	101.2	157.3	6.6	26.1	76.6	
RANK	70	65	3	3	40	30	4	
	STAY	DOC	CW	YG	MARB	REA	\$API	\$TI
EPD	18.4	13.2	41.9	-0.49	0.32	1.23	154.9	97.8
RANK	20	35	15	15	30	4	20	10

- Massively built black son out of Jam-packed
- Eye-popping growth EPDs
- Dam is one of my favorite daughters out of the E65 donor
- 118 WW index! Wow!

11 54M

Heterozygous Black ASA #4364037 Homozygous Polled 54M



PB SM
BD: 2/8/2024

Act. BW	Adj. WW	Adj. YW	ADG	MARB	RE	BF	G+	ATM
86 105	665 107	1163 103	3.17 -	3.09 114	11.90 94	0.18 86		

SIRE HOOK'S EMPIRE 61E DAM TJ NITRO 420F
WS JAM-PACKED 88J WS DIALED UP H95
 WS ETIQUETTE E131 WS DIALED IN A12

	CE	BW	WW	YW	MCE	MILK	MWW	
EPD	11.0	2.9	101.5	153.6	5.4	23.3	74.0	
RANK	60	80	3	4	60	50	10	
	STAY	DOC	CW	YG	MARB	REA	\$API	\$TI
EPD	20.0	19.5	46.5	-0.27	0.56	0.81	168.6	101.5
RANK	10	1	10	90	10	60	10	4

- One of the more uniquely bred black bulls you'll find this sale season.
- His dam is a phenotypic favorite of mine with great structure, perfect feet and a really nice udder. (Aaron)

12 62M

Red ASA #4364189 Homozygous Polled 62M



PB SM
BD: 2/15/2024

Act. BW	Adj. WW	Adj. YW	ADG	MARB	RE	BF	G+	ATM
81 ET	605 ET	1111 ET	3.02 -	2.78 99	12.61 98	0.16 84		

SIRE HOOK'S EMPIRE 61E DAM HOOK'S FULL FIGURES 11F
WS JAM-PACKED 88J WS FAST FORWARD J30
 WS ETIQUETTE E131 WS PAY IT FORWARD G64

	CE	BW	WW	YW	MCE	MILK	MWW	
EPD	13.2	-1.1	81.5	127.1	8.2	22.5	63.1	
RANK	30	15	40	30	20	55	50	
	STAY	DOC	CW	YG	MARB	REA	\$API	\$TI
EPD	19.3	16.6	42.4	-0.39	0.66	1.13	176.2	97.7
RANK	15	10	15	50	4	10	4	10

- Cherry red
- Maternal brother to our high selling heifer last year. (Aaron)





Forge was our pick of the red bulls offered in the 2023 sale season. He has a unique pedigree offering countless breeding options. Structural soundness is a strength of his to go with the confident presence he emits. As good as the bulls are we expect big things from his daughters to reinforce our cow herd and carry on the Simmental legacy for maternal potency. And finally the most striking point that commands my respect about this bull is the way he couples his size and power with the elite level of marbling he is gifted with, an exclusive combination I have not seen anywhere on the red side of the breed. In short, he has the makings of a sire that could classify himself among the most impactful bulls to walk at Wilkinson Farms Simmentals. Co-owned with Bichler Simmentals.

FOR REFERENCE BCLR FORGE J8871

ASA #3993773

	CE	BW	WW	YW	MCE	MILK	MWW	STAY	DOC	CW	YG	MARB	REA	\$API	\$TI
EPD	5.6	3.6	90.9	144.1	2.1	23.4	68.8	21.6	14.6	36.0	-0.26	0.99	0.83	172.3	100.0
RANK	99	99	15	15	99	55	25	3	25	45	35	2	25	10	5

13 93M DNA
 Red **Homozygous Polled** PB SM
 ASA #4363983 **93M** BD: 3/1/2024

Act. BW	Adj. WW	Adj. YW	ADG	MARB	RE	BF	
90	612	1117	2.98	2.90	11.95	0.17	G+ ATM
112	99	99	-	107	94	81	

SIRE GW PREDESTINED 701T DAM HOOK'S FULL FIGURES 11F
BCLR FORGE J8871 **WS FAST FORWARD J30**
 KS ZADA 2887 WS PAY IT FORWARD G64

	CE	BW	WW	YW	MCE	MILK	MWW
EPD	6.0	3.2	91.2	138.8	3.5	23.2	68.7
RANK	95	85	15	15	90	50	25

	STAY	DOC	CW	YG	MARB	REA	\$API	\$TI
EPD	13.7	15.9	41.4	-0.36	0.74	1.05	155.7	99.1
RANK	70	10	15	60	2	15	20	10

- Dark red
- Maternal brother to our high selling heifer last year.
- We believe Forge daughters will be impactful. (Aaron)



WS I LOVE LUCY Maternal sister to Lots 12 & 13.

14 76M DNA
 Red **Homozygous Polled** PB SM
 ASA #4364035 **76M** BD: 2/20/2024

Act. BW	Adj. WW	Adj. YW	ADG	MARB	RE	BF	
72	578	1043	2.77	2.79	12.59	0.16	G+ ATM
90	93	93	-	103	99	76	

SIRE GW PREDESTINED 701T DAM HOOK'S FULL FIGURES 11F
BCLR FORGE J8871 **WS NEW WAY J35**
 KS ZADA 2887 WS PAY IT FORWARD G64

	CE	BW	WW	YW	MCE	MILK	MWW
EPD	11.2	-0.4	85.1	131.3	6.7	23.3	65.8
RANK	55	25	30	25	40	50	35

	STAY	DOC	CW	YG	MARB	REA	\$API	\$TI
EPD	16.5	14.0	19.7	-0.38	0.73	0.78	172.1	100.6
RANK	40	25	80	55	3	70	10	4

- Full brother on paper to Lot 13.
- Out of one of my favorite young cows. (Aaron)





70M Sells as Lot 15.

15 70M DNA
PB SM
BD: 2/18/2024

Red ASA #4364057 Homozygous Polled
70M

Act. BW	Adj. WW	Adj. YW	ADG	MARB	RE	BF	G+ ATM
79 99	719 108	1292 110	3.44 -	2.42 86	14.16 107	0.22 116	

SIRE GW PREDESTINED 701T DAM KRJ HZN DIRECT IMPACT F805
BCLR FORGE J8871 **WS LOW RIDER J41**
 KS ZADA 2887 WS FRONTLINE F60

	CE	BW	WW	YW	MCE	MILK	MWW	
EPD	9.0	2.0	99.6	161.0	4.2	26.4	76.1	
RANK	80	65	4	2	80	25	5	
	STAY	DOC	CW	YG	MARB	REA	\$API	\$TI
EPD	22.1	10.5	39.2	-0.26	0.83	0.85	187.7	108.7
RANK	2	65	20	90	1	55	2	1

- Outcross PB
- Performance slash-line of 99/108/110.
- Exceeds both parents in 7 different traits.
- A bull we strongly considered keeping to replace his sire. (Aaron)



105M Sells as Lot 16.

16 105M DNA
PB SM
BD: 3/6/2024

Red ASA #4363999 Homozygous Polled
105M

Act. BW	Adj. WW	Adj. YW	ADG	MARB	RE	BF	G+ ATM
89 107	662 106	1208 105	3.33 -	3.24 129	14.53 101	0.27 123	

SIRE GW PREDESTINED 701T DAM WS RED MOON D76
BCLR FORGE J8871 **WS HEAVENLY G151**
 KS ZADA 2887 HSF MISS SKY 87U

	CE	BW	WW	YW	MCE	MILK	MWW	
EPD	9.6	2.0	88.1	134.8	4.1	25.0	69.0	
RANK	75	65	20	20	80	35	25	
	STAY	DOC	CW	YG	MARB	REA	\$API	\$TI
EPD	21.1	7.3	16.2	-0.32	0.79	0.61	178.3	100.4
RANK	4	90	90	75	2	95	3	4

- Potential Herd Sire prospect
- We just love this bull. He just puts it all together.
- Moderate birth and steady indexes with high marbling
- Dam is a beautiful Red Moon daughter out of the great 87U donor



42M Sells as Lot 17.

17 42M DNA
PB SM
BD: 1/29/2024

Red ASA #4363964 Homozygous Polled
42M

Act. BW	Adj. WW	Adj. YW	ADG	MARB	RE	BF	G+ ATM
74 90	647 104	1079 96	2.94 -	3.13 115	12.94 102	0.20 95	

SIRE GW PREDESTINED 701T DAM WS HOT BEEF X38
BCLR FORGE J8871 **WS HOT SHOT H96**
 KS ZADA 2887 WS DEAD RED A56

	CE	BW	WW	YW	MCE	MILK	MWW	
EPD	12.0	-1.5	87.0	131.2	7.7	27.4	70.8	
RANK	45	10	25	25	25	20	15	
	STAY	DOC	CW	YG	MARB	REA	\$API	\$TI
EPD	20.4	16.0	39.9	-0.35	0.78	1.03	185.4	104.4
RANK	10	10	20	65	2	20	2	2

If you are looking for a bull that covers all the bases, your search ends here. He just does everything very well. Given his own performance, his calves will come easy, then grow well and offer high quality carcasses. Backed by the maternal, red outcross combo of Forge, Hot Beef, and Dead Red, he should sire beautiful, easy fleshing daughters with solid udders, feet and dispositions who will anchor your herd for years. (Aaron)



71M Sells as Lot 19.



18 118M

Red ASA #4364167 Homozygous Polled 118M PB SM BD: 3/19/2024

Act. BW	Adj. WW	Adj. YW	ADG	MARB	RE	BF
92	667	1194	3.31	2.96	13.64	0.25
112	107	104	-	118	95	114



SIRE GW PREDESTINED 701T DAM HOOK'S EMPIRE 61E
BCLR FORGE J8871 WS HEIRLOOM H69
 KS ZADA Z887 WS MISS DEMI D178

CE	BW	WW	YW	MCE	MILK	MWW
6.8	4.4	98.0	155.7	3.0	24.8	73.7
95	95	5	3	90	35	10

STAY	DOC	CW	YG	MARB	REA	\$API	\$TI
18.7	11.2	57.1	-0.23	0.86	1.08	174.0	104.7
20	60	2	95	1	15	5	2

- Another very good Forge son
- High performance, high marbling bull
- 9 EPDs in the top 20% of the breed
- Dam comes from one of our better producing & uddered cow families

19 71M

Red ASA #4363966 Homozygous Polled 71M PB SM BD: 2/18/2024

Act. BW	Adj. WW	Adj. YW	ADG	MARB	RE	BF
79	679	1225	3.31	1.94	14.56	0.21
96	109	106	-	77	101	95



SIRE GW PREDESTINED 701T DAM KRJ HZN DIRECT IMPACT F805
BCLR FORGE J8871 WS HOLIDAY H46
 KS ZADA Z887 WS TAKE A BOW B211

CE	BW	WW	YW	MCE	MILK	MWW
9.7	1.3	95.8	149.2	4.2	23.3	71.1
75	55	10	10	80	50	15

STAY	DOC	CW	YG	MARB	REA	\$API	\$TI
16.6	12.8	42.3	-0.38	0.52	1.20	160.1	99.6
40	40	15	55	10	5	15	5

- Black faced red bull. Reminds me of his sire.
- Great performing bull with top growth EPDs
- Pedigree is a real outcross to a lot of red Simmentals

20 83M

Red ASA #4364086 Homozygous Polled 83M PB SM BD: 2/27/2024

Act. BW	Adj. WW	Adj. YW	ADG	MARB	RE	BF
110	659	1285	3.47	2.98	13.40	0.16
132	99	109	-	106	101	84



SIRE GW PREDESTINED 701T DAM WS INTERN E264
BCLR FORGE J8871 WS SECRETARY G22
 KS ZADA Z887 WS TALL ORDER D192

CE	BW	WW	YW	MCE	MILK	MWW
5.0	5.0	87.2	144.7	2.8	27.9	71.3
99	99	25	10	95	20	15

STAY	DOC	CW	YG	MARB	REA	\$API	\$TI
24.6	15.8	37.7	-0.20	0.77	0.66	174.0	95.4
1	10	25	99	2	90	5	10

- A big, rugged, red power bull with added frame.
- Recommended for terminal use only. (Aaron)

21 86M

Red ASA #4363968 Homozygous Polled 86M PB SM BD: 2/27/2024

Act. BW	Adj. WW	Adj. YW	ADG	MARB	RE	BF
83	622	1131	3.08	2.77	12.50	0.18
101	105	105	-	103	103	90



SIRE GW PREDESTINED 701T DAM KBHR SNIPER E036
BCLR FORGE J8871 WS HEART THROB H5
 KS ZADA Z887 WS MISS POISE D280

CE	BW	WW	YW	MCE	MILK	MWW
10.9	0.4	84.0	130.0	6.1	24.2	66.1
60	35	30	30	50	40	35

STAY	DOC	CW	YG	MARB	REA	\$API	\$TI
14.5	17.1	29.3	-0.31	0.66	0.71	161.1	96.7
60	4	50	80	4	80	15	10

- Another Forge son with above 100 indexes across the board
- Dam is an ET daughter out of the D280 donor cow
- She has a 103 WW index on her calves



WS MISS POISE D280 Maternal grandam of Lot 21.

BREEDING FOR THE FUTURE BULLS



33M Sells as Lot 23.

22 188L DNA
PB SM
BD: 9/13/2023

Red ASA #4290819 Homozygous Polled
188L

Act. BW	Adj. WW	Act. WT 1/6
95	562	1415
104	103	N/A

G+ **ATM**

SIRE GW PREDESTINED 701T DAM KBHR NIGHTWATCH C114
BCLR FORGE J8871 **WS ELDERBERRY E20**
 KS ZADA Z887 WS MISS CLASS ACT C127

	CE	BW	WW	YW	MCE	MILK	MWW	
EPD	7.4	2.3	82.9	124.5	4.7	26.0	67.3	
RANK	90	70	35	35	70	30	30	
	STAY	DOC	CW	YG	MARB	REA	\$API	\$TI
EPD	18.9	13.0	29.4	-0.27	0.63	0.77	159.5	92.5
RANK	15	35	50	90	5	70	15	15

- Fall born Forge son
- Maternal pedigree goes back to the dam of WS Beef King

23 33M DNA
PB SM
BD: 1/25/2024

Red ASA #4364010 Homozygous Polled
33M

Act. BW	Adj. WW	Adj. YW	ADG	MARB	RE	BF
72	626	1225	3.13	3.00	14.77	0.25
90	101	109	-	111	116	119

G+ **ATM**

SIRE TJ DIPLOMAT 294D DAM HOOK'S EMPIRE 61E
HOOK'S FULL FIGURES 11F **WS RIVIERA J47**
 HOOK'S DOCILA 23D WS ELECTRA E88

	CE	BW	WW	YW	MCE	MILK	MWW	
EPD	15.5	-2.7	86.0	140.5	9.9	30.3	73.2	
RANK	10	4	25	15	5	10	10	
	STAY	DOC	CW	YG	MARB	REA	\$API	\$TI
EPD	16.4	12.3	44.8	-0.18	0.66	0.97	178.2	102.9
RANK	40	45	10	99	4	30	3	3

- A red Full Figures son is hard to find
- What an EPD profile across the board
- Dam is a beautiful Empire daughter out of the famed WS Electra cow



WS ELECTRA E88 Maternal grandam of Lot 23.



14M Sells as Lot 24.

24 14M DNA
PB SM
BD: 1/17/2024

Red ASA #4364048 Homozygous Polled
14M

Act. BW	Adj. WW	Adj. YW	ADG	MARB	RE	BF
64	635	1091	2.78	2.90	12.84	0.15
84	96	93	-	103	97	79

G+

SIRE BCLR MANIFESTO G352 DAM CDI VERDICT 220Y
ELLINGSON MANIFESTO K238 **WS PAY DAY K35**
 HHS GEORGIA 802G WS E PAY E82

	CE	BW	WW	YW	MCE	MILK	MWW	
EPD	15.8	-1.3	83.2	118.6	8.3	25.7	67.1	
RANK	10	15	35	50	15	30	30	
	STAY	DOC	CW	YG	MARB	REA	\$API	\$TI
EPD	20.8	14.4	29.4	-0.33	0.63	0.78	179.2	97.8
RANK	5	20	50	75	5	70	3	10

We invested in this cherry red bull's sire to make outcross reds...which brings us to example 14M. He comes from a long line of powerfully built, tight uddered, dark red cows...this heifer bull is an obvious choice to promote problem free daughters in your herd. DD free. (Aaron)

25 44M

Red Homozygous Polled PB SM
 ASA #4364056 44M BD: 1/31/2024



Act. BW	Adj. WW	Adj. YW	ADG	MARB	RE	BF	G+
63	669	1133	3.02	2.75	11.77	0.28	
79	113	105	-	103	97	140	

SIRE HOOK'S EMPIRE 61E
WS HOLLYWOOD 79H
 WS ELECTRA E88

DAM KRJ HZN DIRECT IMPACT F805
WS JANAYA J10
 WS GENTEEL G47

	CE	BW	WW	YW	MCE	MILK	MWW	
EPD	18.9	-2.3	92.1	143.1	10.0	24.9	70.8	
RANK	2	10	15	10	4	35	15	
	STAY	DOC	CW	YG	MARB	REA	\$API	\$TI
EPD	18.0	10.4	46.0	-0.13	0.67	0.78	186.4	105.4
RANK	25	70	10	99	4	70	2	2

- Calving ease prospect with impressive growth EPDs
- Hollywood is a son out of the WS Electra cow
- Top 2% CE with top 10% WW & 15% YW. Rare!



44M Sells as Lot 25.

26 31M

Red Homozygous Polled PB SM
 ASA #4364007 31M BD: 1/25/2024



Act. BW	Adj. WW	Adj. YW	ADG	MARB	RE	BF	G+
77	640	1191	3.08	2.93	11.27	0.23	
96	108	110	-	109	93	115	

SIRE TJ HEISMAN 388F
BRIDLE BIT HERSCHEL H027
 BRIDLE BIT MISS E7102

DAM HOOK'S EMPIRE 61E
WS MS JACKY J78
 WS FINLEIGH F27

	CE	BW	WW	YW	MCE	MILK	MWW	
EPD	10.1	0.0	82.3	133.6	5.9	27.5	68.3	
RANK	70	30	35	25	50	20	25	
	STAY	DOC	CW	YG	MARB	REA	\$API	\$TI
EPD	18.0	10.4	48.0	-0.19	0.86	0.65	178.8	101.3
RANK	25	70	10	99	1	90	3	4

- Well-made with a good phenotype.
- Good maternal traits.
- The Herschel cattle have been great for adding marbling.



31M Sells as Lot 26.

27 53M

Red Homozygous Polled PB SM
 ASA #4364033 53M BD: 2/7/2024



Act. BW	Adj. WW	Adj. YW	ADG	MARB	RE	BF	G+
79	598	1065	2.86	1.85	13.08	0.24	
96	96	94	-	68	103	114	

SIRE HOOK'S FULL FIGURES 11F
WS 38 SPECIAL 20H
 WS KILLING TIME E38

DAM WS HOT BEEF X38
WS RED HOT H51
 WS DEAD RED A56

	CE	BW	WW	YW	MCE	MILK	MWW	
EPD	15.5	-2.8	61.3	86.9	10.8	33.2	63.7	
RANK	10	4	99	99	2	4	45	
	STAY	DOC	CW	YG	MARB	REA	\$API	\$TI
EPD	21.3	12.6	19.0	-0.40	0.56	0.99	170.6	85.7
RANK	4	40	85	45	10	25	10	35

- Dark red heifer bull with plenty of maternal and a high STAY. He didn't care much for the picture or video pens. (Aaron)



WS 38 SPECIAL 20H Sire of Lot 27.



49M Sells as Lot 28.

28 **49M**

Red Homozygous Polled
ASA #4363945 49M



PB SM
BD: 2/5/2024

Act. BW 79 96	Adj. WW 678 102	Adj. YW 1137 97	ADG 3.11 -	MARB 2.67 95	RE 13.25 100	BF 0.20 105	
---------------------	-----------------------	-----------------------	------------------	--------------------	--------------------	-------------------	--

SIRE 9 MILE ABUNDANCE 7507 DAM CDI VERDICT 220Y
WS TOMKAT 54K WS NEXT STEP H68
WS OBSESSION G7 WS ROSE OF SHARON Y45

	CE	BW	WW	YW	MCE	MILK	MWW	
EPD	10.4	-0.5	80.9	113.6	8.2	31.0	71.3	
RANK	65	20	45	60	20	10	15	
	STAY	DOC	CW	YG	MARB	REA	\$API	\$TI
EPD	22.4	10.4	18.0	-0.46	0.45	0.92	163.8	91.3
RANK	2	70	85	20	15	40	15	20

Here's an attractive, cherry red bull with tons of maternal out of one of my sneaky good cows. She's not a big cow but she draws from a big and powerful cow family in her "right size" Verdict cow frame. DD free. (Aaron)

www.alliedgeneticresources.dvauction.com

View videos, register to bid and watch the sale live online.

DVAuction

Broadcasting Real-Time Auctions

WATCH AND BID ONLINE FOR FREE

Visit www.DVAuction.com and Register. It's as easy as 1, 2, 3...

1. Create an account at www.DVAuction.com under the "create new account" tab.
2. Apply for bidding by clicking "apply for bidding" in the upper left corner of your screen, at least 24 hours prior to the auction.
3. Tune into the sale and make your purchases.

www.DVAuction.com

support@dvauction.com
402-316-5460 || 402-474-5557

FOR REFERENCE **RR5-MR MOAB J239**

ASA #3924458

EPD RANK	CE	BW	WW	YW	MCE	MILK	MWW	STAY	DOC	CW	YG	MARB	REA	\$API	\$TI
	6.1	1.7	101.0	155.1	4.0	21.0	71.4	19.5	9.9	55.0	-0.28	1.14	1.19	195.8	116.2
	99	65	3	4	85	65	15	15	75	3	90	1	10	1	1



WS KAYLA K51 Dam of Lot 30.

29 18M



Red		Homozygous Polled		PB SM			
ASA #4364115		18M		BD: 1/22/2024			
Act. BW	Adj. WW	Adj. YW	ADG	MARB	RE	BF	G+
70	659	1185	2.94	3.10	12.53	0.29	
92	99	101	-	110	95	153	

SIRE IR IMPERIAL D948 DAM 3C HARMONY 0575H B
RR5-MR MOAB J239 WS UP FRONT K120
 Lcdr MS EMBER 724E WS FRONTLINE F60

EPD RANK	CE	BW	WW	YW	MCE	MILK	MWW
	11.0	1.8	91.9	147.8	7.5	25.5	71.3
	60	65	15	10	25	35	15

EPD RANK	STAY	DOC	CW	YG	MARB	REA	\$API	\$TI
	17.2	10.4	34.1	-0.29	0.81	0.87	164.9	99.7
	35	70	35	85	1	50	10	5

- A little different twist on the red side from a really well put together Harmony daughter.
- Moderate framed dark red bull backed by three generations of power sires. (Aaron)

30 32M



Red		Homozygous Polled		PB SM			
ASA #4364151		32M		BD: 1/25/2024			
Act. BW	Adj. WW	Adj. YW	ADG	MARB	RE	BF	G+
75	633	1098	2.78	2.51	12.47	0.15	
97	107	102	-	94	103	75	

SIRE IR IMPERIAL D948 DAM HOOK'S EMPIRE 61E
RR5-MR MOAB J239 WS KAYLA K51
 Lcdr MS EMBER 724E DCR MS ABILENE F350

EPD RANK	CE	BW	WW	YW	MCE	MILK	MWW
	9.6	0.9	82.7	125.3	6.0	23.0	64.3
	75	45	35	35	50	50	45

EPD RANK	STAY	DOC	CW	YG	MARB	REA	\$API	\$TI
	13.5	11.0	43.7	-0.34	0.82	1.17	164.8	99.2
	70	60	15	70	1	10	10	10

This bull is full of carcass potential, with Carcass Weight, to Marbling, to Ribeye and even Shear Force EPDs are all being very solid. He would be great for all around beef production quality.

31 73M



Red		Homozygous Polled		PB SM				
ASA #4364140		73M		BD: 2/19/2024				
Act. BW	Adj. WW	Adj. YW	ADG	MARB	RE	BF	G+	ATM
97	613	1193	3.15	2.83	11.98	0.20		
118	101	104	-	105	95	111		

SIRE IR IMPERIAL D948 DAM HOOK'S EMPIRE 61E
RR5-MR MOAB J239 WS MS HAVANA H38
 Lcdr MS EMBER 724E WS EVA E56

EPD RANK	CE	BW	WW	YW	MCE	MILK	MWW
	5.5	3.4	97.2	151.8	4.1	26.8	75.3
	99	90	5	5	80	25	10

EPD RANK	STAY	DOC	CW	YG	MARB	REA	\$API	\$TI
	18.1	8.6	57.8	-0.30	1.01	1.22	181.2	109.4
	25	85	2	85	1	4	3	1

- 73M is a great red bull for high growth and great marbling.
- In addition, his maternal is very solid with a very good cow and cow family behind him.
- He also has added frame size.





84M Sells as Lot 33.



BAR CK MS 6225 911Z Dam of Lots 32-35.

32 180L

Red
ASA #4290811

Homozygous Polled
180L

3/4 SM 1/4 AN
BD: 8/18/2023



Act. BW	Adj. WW	Act. WT 1/6
82	517	1320
ET	ET	N/A



SIRE IR IMPERIAL D948
RR5-MR MOAB J239
LCDR MS EMBER 724E

DAM G A R SELECTIVE
BAR CK MS 6225 911Z
BAR CK MS 925S

	CE	BW	WW	YW	MCE	MILK	MWW	
EPD	16.9	-3.2	74.0	115.2	10.0	21.9	58.5	
RANK	10	10	60	60	10	70	70	
	STAY	DOC	CW	YG	MARB	REA	\$API	\$TI
EPD	18.5	12.0	33.5	-0.15	0.94	0.68	182.3	97.4
RANK	15	60	55	65	3	50	2	10

- This is a good-looking Moab calf.
- He's nicely made and checkout his marbling EPD.
- He's a good calving ease prospect.

33 84M

Heterozygous Black
ASA #4364049

Homozygous Polled
84M

3/4 SM 1/4 AN
BD: 2/27/2024



Act. BW	Adj. WW	Adj. YW	ADG	MARB	RE	BF
88	724	1127	3.23	5.08	12.90	0.22
ET	ET	ET	-	180	100	116



SIRE IR IMPERIAL D948
RR5-MR MOAB J239
LCDR MS EMBER 724E

DAM G A R SELECTIVE
BAR CK MS 6225 911Z
BAR CK MS 925S

	CE	BW	WW	YW	MCE	MILK	MWW	
EPD	12.6	0.3	85.5	134.5	7.2	21.9	64.3	
RANK	55	60	25	25	50	70	40	
	STAY	DOC	CW	YG	MARB	REA	\$API	\$TI
EPD	14.5	11.9	44.7	-0.29	0.96	1.02	169.2	101.0
RANK	55	60	25	25	3	10	10	4

- Another high marbling Moab son.
- With his solid growth EPDs he should be a good one if you're feeding out your own calves.



34 59M

Heterozygous Black ASA #4364188 Homozygous Polled 59M 3/4 SM 1/4 AN BD: 2/15/2024



Act. BW	Adj. WW	Adj. YW	ADG	MARB	RE	BF	G+
85 ET	688 ET	1128 ET	3.17 -	3.88 138	11.81 92	0.14 74	

SIRE WS PROCLAMATION E202
LBRS GENESIS G69
 LBR DIANA D69

DAM G A R SELECTIVE
BAR CK MS 6225 911Z
 BAR CK MS 9255

	CE	BW	WW	YW	MCE	MILK	MWW	
EPD	16.7	1.6	93.0	134.9	8.3	23.0	69.2	
RANK	15	80	10	25	30	60	20	
	STAY	DOC	CW	YG	MARB	REA	\$API	\$TI
EPD	12.3	15.5	47.8	-0.09	0.89	0.57	164.0	101.3
RANK	75	15	20	80	4	70	10	4

59M's sire Genesis is one of the big growth and marbling bulls in the breed. By his numbers and data he will give you just that. Also his dam (911Z) is a good producer and has made many other fine offspring as well.

35 82M

Homozygous Black ASA #4364093 Homozygous Polled 82M 3/4 SM 1/4 AN BD: 2/26/2024



Act. BW	Adj. WW	Adj. YW	ADG	MARB	RE	BF	G+	ACE
83 ET	618 ET	1105 ET	3.06 -	2.42 86	11.99 93	0.18 95		

SIRE WS PROCLAMATION E202
LBRS GENESIS G69
 LBR DIANA D69

DAM G A R SELECTIVE
BAR CK MS 6225 911Z
 BAR CK MS 9255

	CE	BW	WW	YW	MCE	MILK	MWW	
EPD	19.0	-3.1	73.1	105.8	9.6	23.0	59.2	
RANK	3	10	65	80	15	60	65	
	STAY	DOC	CW	YG	MARB	REA	\$API	\$TI
EPD	17.5	13.8	21.5	-0.07	0.84	0.35	175.3	93.8
RANK	25	35	90	85	10	95	4	15

-Look for a bull that will work on heifers? 82M is your ticket, with a 19 in direct CE and -3 in BW.
 -He has rock solid maternal and good carcass traits as well.



FOR REFERENCE **LBRS GENESIS G69**

ASA #3603651

	CE	BW	WW	YW	MCE	MILK	MWW	STAY	DOC	CW	YG	MARB	REA	\$API	\$TI
EPD	9.1	2.8	114.0	172.3	2.9	23.5	80.4	14.1	17.2	67.6	-0.09	0.95	0.93	179.7	117.6
RANK	85	85	1	1	95	45	2	65	4	1	99	1	40	3	1

BREEDING FOR THE FUTURE BULLS



36 41M D_{NA}
PB SM
BD: 1/28/2024

Homozygous Black **Homozygous Polled**
ASA #4364046 41M

Act. BW	Adj. WW	Adj. YW	ADG	MARB	RE	BF	G+ ATM
78 97	565 90	1208 107	3.01 -	2.50 109	12.22 94	0.18 106	

SIRE WS PROCLAMATION E202 DAM HOOK'S EAGLE 6E
LBRS GENESIS G69 **WS JACINTH J37**
 LBR DIANA D69 HOOK'S BONITA 52B

	CE	BW	WW	YW	MCE	MILK	MWW	
EPD	9.4	2.5	109.0	176.2	3.4	19.7	74.1	
RANK	80	75	1	1	90	80	10	
	STAY	DOC	CW	YG	MARB	REA	\$API	\$TI
EPD	16.9	15.7	75.3	-0.21	0.41	1.22	157.5	102.5
RANK	35	10	1	99	20	4	20	3

•Look at his growth numbers: both 109 WW and 176 YW EPDs are top 1% in the breed
 •He should make a nice terminal bull in your program.

37 57M D_{NA}
3/4 SM 1/4 AN
BD: 2/10/2024

Homozygous Black **Homozygous Polled**
ASA #4363940 57M

Act. BW	Adj. WW	Adj. YW	ADG	MARB	RE	BF	G+ ATM
86 103	680 108	1141 101	3.19 -	2.79 121	11.43 88	0.20 118	

SIRE WS PROCLAMATION E202 DAM LD CAPITALIST 316
LBRS GENESIS G69 **WS BLACK STAR H33**
 LBR DIANA D69 WS SKY DANCER D246

	CE	BW	WW	YW	MCE	MILK	MWW	
EPD	10.4	0.6	95.6	147.0	5.5	28.0	76.1	
RANK	80	65	5	10	75	20	4	
	STAY	DOC	CW	YG	MARB	REA	\$API	\$TI
EPD	14.0	14.2	70.6	0.04	0.72	0.63	153.4	99.3
RANK	60	30	1	99	15	55	25	5

38 97M D_{NA}
PB SM
BD: 3/4/2024

Homozygous Black **Homozygous Polled**
ASA #4364095 97M

Act. BW	Adj. WW	Adj. YW	ADG	MARB	RE	BF	G+
87 103	666 N/A	1121 N/A	3.18 -	2.55 100	11.60 100	0.21 100	

SIRE WS PROCLAMATION E202 DAM HOOK'S BROADWAY 11B
LBRS GENESIS G69 **WS FREEWAY F46**
 LBR DIANA D69 MJ MISS COMRADE 601

	CE	BW	WW	YW	MCE	MILK	MWW	
EPD	11.6	-0.5	93.7	150.8	5.2	26.4	73.4	
RANK	50	20	10	5	65	25	10	
	STAY	DOC	CW	YG	MARB	REA	\$API	\$TI
EPD	20.6	15.5	42.5	-0.02	0.70	0.45	181.5	104.0
RANK	10	15	15	99	3	99	3	2





8M Sells as Lot 39.



WS SWEET KATCH K4 Dam of Lot 39.



WS SWEET SIXTEEN F16 Maternal grandam of Lot 39.

39 8M

Homozygous Black ASA #4363941 Homozygous Polled 8M PB SM BD: 1/13/2024



Act. BW	Adj. WW	Adj. YW	ADG	MARB	RE	BF	G+	ATM
83	701	1350	3.57	2.82	15.98	0.22		
ET	ET	ET	-	100	124	116		

SIRE BRIDLE BIT ECLIPSE E744 DAM LCDR FAVOR 149F
 HOOK'S GALILEO 210G WS SWEET KATCH K4
 HOOK'S EVITA 18E WS SWEET SIXTEEN F16

	CE	BW	WW	YW	MCE	MILK	MWW
EPD	13.1	0.2	102.3	166.3	8.5	31.1	82.1
RANK	30	30	2	1	15	10	1

	STAY	DOC	CW	YG	MARB	REA	\$API	\$TI
EPD	19.7	18.5	57.0	-0.33	0.97	1.23	201.2	117.6
RANK	10	2	2	75	1	4	1	1

WS Inauguration 8M is stacked with multiple generations of long bodied donor cows in his lineage, as the newest and perhaps most exciting breeding piece to come out of the athletic "Zarzaparilla" bloodline to date. He stands on a strong leg with a perfect hoof. He also inherited his dam's attractive front, big rib, natural thickness, super fleshing ability, added width between the pins and his cow-line's dominant trait for great personalities which carries on through the generations. (Aaron)



55M Sells as Lot 41.

40 115M



Homozygous Black PB SM
 ASA #4364177 115M BD: 3/13/2024

Act. BW	Adj. WW	Adj. YW	ADG	MARB	RE	BF	
81	631	1192	3.26	2.97	12.15	0.25	G+
97	104	104	-	118	88	109	

SIRE BRIDLE BIT ECLIPSE E744 DAM WS HOT BEEF X38
HOOK'S GALILEO 210G WS ALIDA A52
 HOOK'S EVITA 18E WS MISS WANDERER W88

EPD	CE	BW	WW	YW	MCE	MILK	MWW	
	11.7	0.8	80.6	120.9	10.5	36.1	76.2	
RANK	50	45	45	45	3	1	5	
EPD	STAY	DOC	CW	YG	MARB	REA	\$API	\$TI
	20.6	14.9	29.4	-0.29	0.86	0.64	182.7	100.3
RANK	10	15	50	85	1	90	2	4

- Good looking son of Galileo
- Terrific maternal & carcass EPDs
- A52 is also the dam of CEO, the only paternal brother to WS Miss Sugar
- Dam never misses and is still producing well at 11 years old, settled to AI breeding once again

41 55M



Homozygous Black PB SM
 ASA #4363946 55M BD: 2/8/2024

Act. BW	Adj. WW	Adj. YW	ADG	MARB	RE	BF	
74	702	1302	3.45	3.58	13.70	0.26	G+
91	116	113	-	143	100	113	

SIRE HOOK'S BEACON 56B DAM WS PROCLAMATION E202
CLRS GUARDIAN 317G WS HEADRESS H97
 CLRS ALWAYS XCELLENT WS NISS HOTCAKES C114

EPD	CE	BW	WW	YW	MCE	MILK	MWW	
	15.4	-0.4	103.3	157.4	9.5	27.8	79.3	
RANK	10	25	2	3	10	20	2	
EPD	STAY	DOC	CW	YG	MARB	REA	\$API	\$TI
	17.3	10.1	49.9	-0.14	0.73	0.85	184.6	111.4
RANK	35	70	5	99	3	55	2	1

- Wow! Herd Sire prospect here!
- Indexes are incredible. Small at birth and then exploded.
- One of the top marbling bulls, boasting a 143 index.
- Dam is probably our best Proclamation daughter with a 113 WW index on her calves
- Tremendous disposition
- We want to get him collected ASAP and use him in our black program





Hit Man is our pick of the Impact sons to sell standing out to us in both metrics and by his 701T donor dam. As one of the highest API and STAY, PB sons to surface, Hit Man brings structural integrity to the game where his calves excel in eye appeal and presence. Co-owned with C Diamond Simmentals.

FOR REFERENCE CDI HIT MAN 306H

ASA #3801593

	CE	BW	WW	YW	MCE	MILK	MWW	STAY	DOC	CW	YG	MARB	REA	\$API	\$TI
EPD	12.6	1.1	89.2	138.9	8.1	28.7	73.2	22.4	17.5	41.0	-0.25	0.41	0.86	166.0	93.3
RANK	40	50	20	15	20	10	10	2	3	20	95	20	55	10	15

42 121M

Homozygous Black
ASA #4364079

Homozygous Polled
121M



PB SM

BD: 3/20/2024

Act. BW	Adj. WW	Adj. YW	ADG	MARB	RE	BF
83	684	1326	3.66	2.29	12.86	0.21
100	113	115	-	91	93	91



SIRE LCDR IMPACT 134F
CDI HIT MAN 306H
CDI MS 701T 13Z

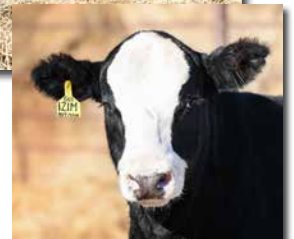
DAM TJ FROSTY 318E
WS GISELLE G65
WS AINSLEY A70

	CE	BW	WW	YW	MCE	MILK	MWW
EPD	9.2	1.6	96.7	151.9	4.8	30.6	78.8
RANK	80	60	10	5	70	10	2

	STAY	DOC	CW	YG	MARB	REA	\$API	\$TI
EPD	21.2	16.3	48.1	-0.12	0.28	0.59	153.9	93.1
RANK	4	10	10	99	35	95	20	15



121M Sells as Lot 42.



- Outstanding baldy son of Hit Man
- Will raise calves that not only perform, but look good too
- Dam is a favorite with a 108 WW index on her calves
- Same cow family that produced WS Miss Sugar, WS Mother Lode, WS Epic , WS Prime Time & many more

43 67M

Homozygous Black
ASA #4363974

Homozygous Polled
67M



PB SM

BD: 2/17/2024

Act. BW	Adj. WW	Adj. YW	ADG	MARB	RE	BF
85	675	1235	3.35	1.45	15.14	0.20
103	107	109	-	63	116	118



SIRE LCDR IMPACT 134F
CDI HIT MAN 306H
CDI MS 701T 13Z

DAM TJ MAIN EVENT 503B
WS MAINE H49
WS OPPORTUNITY D248

	CE	BW	WW	YW	MCE	MILK	MWW
EPD	11.6	1.4	97.1	155.0	6.9	30.2	78.6
RANK	50	55	10	4	35	10	3

	STAY	DOC	CW	YG	MARB	REA	\$API	\$TI
EPD	19.0	12.2	48.4	-0.34	0.15	1.17	147.9	92.0
RANK	15	45	10	70	55	10	30	20



67M Sells as Lot 43.

- A super well put together bull backed by really good young brood cow who raised our lead off bull in last year's sale. (Aaron)

BREEDING FOR THE FUTURE BULLS

44 89M

Heterozygous Black
ASA #4364015

Homozygous Polled
89M

3/4 SM 1/4 AN
BD: 2/27/2024



Act. BW	Adj. WW	Adj. YW	ADG	MARB	RE	BF	G+
83 100	636 102	1135 101	3.15 -	2.60 96	10.80 85	0.22 105	

SIRE LCDR IMPACT 134F
CDI HIT MAN 306H
CDI MS 701T 13Z

DAM LD CAPITALIST 316
WS LIGHT IT UP H82
WS LIGHTS COME ON D217

	CE	BW	WW	YW	MCE	MILK	MWW
EPD	13.3	0.4	86.4	134.7	9.4	30.8	74.2
RANK	45	60	20	25	15	10	10
	STAY	DOC	CW	YG	MARB	REA	\$API
EPD	24.3	14.3	51.6	-0.04	0.47	0.65	161.4
RANK	1	30	15	90	40	55	15

- Another good Hitman bull with some maternal backing.
- Dam is a maternal sister to Sweet Sixteen.
- High STAY (Aaron)

45 90M

Homozygous Black
ASA #4363960

Homozygous Polled
90M

PB SM
BD: 2/27/2024



Act. BW	Adj. WW	Adj. YW	ADG	MARB	RE	BF	G+	ATM
75 90	675 111	1147 100	3.20 -	1.67 67	N/A 0	N/A 0		

SIRE LCDR IMPACT 134F
CDI HIT MAN 306H
CDI MS 701T 13Z

DAM KBHR NIGHTWATCH C114
WS GRACE G121
WS ALIDA A52

	CE	BW	WW	YW	MCE	MILK	MWW
EPD	11.5	0.3	85.0	124.7	8.6	31.6	74.0
RANK	50	35	30	35	15	10	10
	STAY	DOC	CW	YG	MARB	REA	\$API
EPD	24.2	14.0	29.9	-0.24	0.32	0.59	161.8
RANK	1	25	45	95	30	95	15

- A favorite Hit Man calf all summer
- Hit Man calves are generally born small, but really grow
- Dam has a 107 WW index on her calves





WS Proclamation has become one of the most recognizable sires in the breed capturing the title in most used sire for multiple years. WS Miss Sugar's most popular son cementing his elite status with the proof of his daughters' production records. You can rely on WS Proclamation to sire 6 framed, long bodied cattle who possess superior foot structure and great dispositions as well as daughter that just get out and work for you. Co-owned with Apex Cattle Co.

FOR REFERENCE WS PROCLAMATION E202

ASA #3254156

	CE	BW	WW	YW	MCE	MILK	MWW	STAY	DOC	CW	YG	MARB	REA	\$API	\$TI
EPD	13.4	0.4	96.4	143.7	7.8	26.2	74.3	16.0	17.9	34.6	-0.13	0.59	0.45	166.9	102.1
RANK	30	35	10	15	25	25	10	50	3	35	99	10	99	10	3

46 94M

Heterozygous Black Homozygous Polled
ASA #4363984 94M



PB SM

BD: 3/2/2024

Act. BW	Adj. WW	Adj. YW	ADG	MARB	RE	BF	
85	706	1196	3.34	2.28	14.07	0.23	G+
101	113	104	-	91	98	105	

SIRE CCR COWBOY CUT 5048Z
WS PROCLAMATION E202
WS MISS SUGAR C4

DAM KBHR ULTIMATE A089
WS MISS BLACKBERRY C117
WS MYSTERY MAKER Y85

	CE	BW	WW	YW	MCE	MILK	MWW
EPD	11.3	1.2	88.4	133.1	6.3	31.2	75.3
RANK	55	50	20	25	45	10	10

	STAY	DOC	CW	YG	MARB	REA	\$API	\$TI
EPD	18.0	14.6	29.4	-0.34	0.41	0.86	155.1	93.0
RANK	25	20	50	70	20	50	20	15

- He is our only Proclamation son born this year, but he's a good one
- He is hetero black, so you could infuse some Proclamation genetics into your red cows
- Dam has a 107 WW index on her calves



94M Sells as Lot 46.

47 181L

Heterozygous Black Homozygous Polled
ASA #4290812 181L



PB SM

BD: 8/18/2023

Act. BW	Adj. WW	Act. WT 1/6	
78	605	1410	G+
ET	ET	N/A	

SIRE CCR COWBOY CUT 5048Z
WS PROCLAMATION E202
WS MISS SUGAR C4

DAM HOOKS SHEAR FORCE 38K
WS LITTLE SISTER W37
DCR MS RIBEYE N72

	CE	BW	WW	YW	MCE	MILK	MWW
EPD	11.0	0.8	87.1	134.9	7.0	29.3	72.7
RANK	60	45	25	20	35	15	10

	STAY	DOC	CW	YG	MARB	REA	\$API	\$TI
EPD	13.7	18.0	42.8	-0.23	0.42	0.86	147.1	92.6
RANK	70	2	15	95	20	50	30	15

- 3 fall born full brothers
- Aged bulls that can cover more cows
- Can be used on red or black cows
- Maternal pedigree. Dam produced here until she was 15
- Dam was the only full sister to WS Beef Maker



WS LITTLE SISTER W37 AT AGE 14 Dam of Lots 47 - 49.

BREEDING FOR THE FUTURE BULLS

48 182L

Heterozygous Black
ASA #4290813

Homozygous Polled
182L

PB SM
BD: 8/19/2023



Act. BW	Adj. WW	Act. WT 1/6
77	529	1360
ET	ET	N/A

SIRE CCR COWBOY CUT 5048Z
WS PROCLAMATION E202
WS MISS SUGAR C4

DAM HOOKS SHEAR FORCE 38K
WS LITTLE SISTER W37
DCR MS RIBEYE N72

	CE	BW	WW	YW	MCE	MILK	MWW	
EPD	12.6	-0.7	79.7	122.2	8.0	29.3	69.0	
RANK	35	20	45	40	20	15	25	
	STAY	DOC	CW	YG	MARB	REA	\$API	\$TI
EPD	10.9	15.2	36.1	-0.38	0.53	1.07	149.6	93.3
RANK	90	15	30	55	10	15	25	15

49 184L

Heterozygous Black
ASA #4290815

Homozygous Polled
184L

PB SM
BD: 8/22/2023



Act. BW	Adj. WW	Act. WT 1/6
91	517	1335
ET	ET	N/A

SIRE CCR COWBOY CUT 5048Z
WS PROCLAMATION E202
WS MISS SUGAR C4

DAM HOOKS SHEAR FORCE 38K
WS LITTLE SISTER W37
DCR MS RIBEYE N72



	CE	BW	WW	YW	MCE	MILK	MWW	
EPD	14.1	-0.1	85.6	131.4	9.3	29.3	72.0	
RANK	20	25	25	25	10	15	15	
	STAY	DOC	CW	YG	MARB	REA	\$API	\$TI
EPD	14.6	14.5	34.8	-0.34	0.30	0.88	147.3	90.4
RANK	60	20	30	70	30	45	30	20





WS Enhancement is proving himself as a reliable heifer bull with top 15% of the breed in YW. His offspring are structurally sound and highly attractive with super dispositions. On the stake of things, his Carcass Merit data came back confirming our expectations of his carcass strengths. The first daughters to calve out of him are easy to find with extra fleshing ability and a solid motherly instinct. He is the type of bull I've been breeding for all my career; a true balance bull that covers all your bases. Co-owned with Gibbs Farms and Select Sires.

FOR REFERENCE WS ENHANCEMENT 25H

ASA #3764886

EPD	CE	BW	WW	YW	MCE	MILK	MWW	STAY	DOC	CW	YG	MARB	REA	\$API	\$TI
	19.2	-3.6	82.6	138.3	11.8	28.3	69.5	17.9	15.9	47.4	0.02	0.95	0.62	201.5	108.5
RANK	1	2	35	15	1	15	20	25	10	10	99	1	99	1	1

50 2M

Homozygous Black
ASA #4364135

Homozygous Polled
2M



PB SM
BD: 1/4/2024

Act. BW	Adj. WW	Adj. YW	ADG	MARB	RE	BF
65	666	1274	3.83	2.53	14.24	0.21
84	106	113	-	110	109	124



SIRE WS PROCLAMATION E202
WS ENHANCEMENT 25H
WS SWEET SIXTEEN F16

DAM WS CEO C155
WS JALANI J131
WS MISS SUBSTANCIAL C59

EPD	CE	BW	WW	YW	MCE	MILK	MWW
	12.3	0.1	87.2	144.6	8.6	30.6	74.1
RANK	40	30	25	10	15	10	10

EPD	STAY	DOC	CW	YG	MARB	REA	\$API	\$TI
	15.6	13.6	34.8	-0.26	0.64	0.86	168.1	100.1
RANK	50	30	30	90	4	50	10	5

- Calving ease prospect
- Typical Enhancement son –born small and just keeps performing
- One of our highest average daily gains
- 11 EPDs in the top 35% of the breed

51 27M

Homozygous Black
ASA #4364100

Homozygous Polled
27M



PB SM
BD: 1/23/2024

Act. BW	Adj. WW	Adj. YW	ADG	MARB	RE	BF
75	588	1146	3.02	2.80	11.04	0.29
ET	ET	ET	-	99	86	153



SIRE WS PROCLAMATION E202
WS ENHANCEMENT 25H
WS SWEET SIXTEEN F16

DAM HOOK'S GIBRALTAR 4G
WS HEADWATER J12
WS SECRETARY G22

EPD	CE	BW	WW	YW	MCE	MILK	MWW
	15.4	-1.0	89.8	145.6	9.9	29.4	74.2
RANK	10	15	15	10	5	15	10

EPD	STAY	DOC	CW	YG	MARB	REA	\$API	\$TI
	18.8	15.0	46.9	0.02	0.84	0.58	189.7	106.4
RANK	20	15	10	99	1	95	1	1

- Balanced EPDs
- Recommended for terminal use only (Aaron)

52 L200

Homozygous Black
ASA #4364136

Homozygous Polled
L200



PB SM
BD: 12/26/2023

Act. BW	Adj. WW	Adj. YW	ADG	MARB	RE	BF
67	656	1078	2.81	2.16	14.09	0.15
86	104	95	-	94	108	88



SIRE TJ DIPLOMAT 294D
HOOK'S FULL FIGURES 11F
HOOK'S DOCILA 23D

DAM WS PROCLAMATION E202
WS MISS ROYALTY J115
WS MISS REGAL Z148

EPD	CE	BW	WW	YW	MCE	MILK	MWW
	15.3	-1.3	87.3	126.5	9.9	35.9	79.4
RANK	15	15	25	35	5	2	2

EPD	STAY	DOC	CW	YG	MARB	REA	\$API	\$TI
	17.7	17.8	32.9	-0.34	0.64	1.10	175.3	101.8
RANK	30	3	35	70	4	10	5	3

- Calving ease bull with 104 WW index
- Great cow family with beautiful udders
- 10 EPDs in the top 15% of the breed



L200 Sells as Lot 52.



1M Sells as Lot 53.

53 1M

Heterozygous Black ASA #4364122 Homozygous Polled 1M



PB SM
BD: 1/3/2024

Act. BW	Adj. WW	Adj. YW	ADG	MARB	RE	BF
96	702	1244	3.17	2.50	14.62	0.17
121	112	110	-	109	112	100



SIRE TJ DIPLOMAT 294D
HOOK'S FULL FIGURES 11F
HOOK'S DOCILA 23D

DAM WS PROCLAMATION E202
WS JAZZY J116
WS MISS REGAL Z148

	CE	BW	WW	YW	MCE	MILK	MWW	
EPD	10.7	4.2	106.2	163.4	8.0	35.4	88.4	
RANK	65	95	1	2	20	2	1	
	STAY	DOC	CW	YG	MARB	REA	\$API	\$TI
EPD	15.6	14.7	51.4	-0.29	0.49	1.19	156.3	102.6
RANK	50	20	4	85	15	5	20	3

- Full brother in pedigree to the Lot 52, but a much more powerful individual
- Ranks in the top 2% for most growth and maternal EPDs
- Although he has a big BW EPD, he was born quite easily out of a first calf fall-born heifer



WS MISS REGAL Z148 Maternal grandam of Lots 52 - 54.

54 20M

Homozygous Black ASA #4364130 Homozygous Polled 20M



PB SM
BD: 1/22/2024

Act. BW	Adj. WW	Adj. YW	ADG	MARB	RE	BF
81	674	1108	2.90	2.43	12.33	0.11
103	107	98	-	106	95	65



SIRE BCLR MANIFESTO G352
ELLINGSON MANIFESTO K238
HHS GEORGIA 802G

DAM WS PROCLAMATION E202
WS JESSAMINE J126
WS MISS REGAL Z148

	CE	BW	WW	YW	MCE	MILK	MWW	
EPD	11.2	3.8	103.6	152.5	6.6	28.9	80.6	
RANK	55	90	2	5	40	15	2	
	STAY	DOC	CW	YG	MARB	REA	\$API	\$TI
EPD	18.9	17.9	49.5	-0.28	0.52	0.98	163.0	101.0
RANK	15	3	5	90	10	25	15	4

- Homo Black son of "Manny" with top growth EPDs
- Dam is another one of the flush sisters out of the great Z148 donor cow
- 103 WW EPD is hard to find



55 96M

Homozygous Black ASA #4363977 Homozygous Polled 96M



PB SM
BD: 3/3/2024

Act. BW	Adj. WW	Adj. YW	ADG	MARB	RE	BF
92	690	1236	3.41	2.14	14.69	0.17
111	114	107	-	85	107	74



SIRE WS PROCLAMATION E202
BCLR MANIFESTO G352
ELLIOTT MISS 352

DAM HOOK'S BEACON 56B
HOOK'S GORMET 69G
HOOK'S YUMA 49Y

	CE	BW	WW	YW	MCE	MILK	MWW	
EPD	9.4	2.5	101.1	151.0	6.3	27.2	77.6	
RANK	80	75	3	5	45	20	3	
	STAY	DOC	CW	YG	MARB	REA	\$API	\$TI
EPD	15.4	12.9	44.9	-0.32	0.55	1.10	157.3	101.7
RANK	55	35	10	75	10	10	20	3

- 96M ought to give you the pounds.
- Big ribeye.
- Good bull with nice phenotype.

56 9M

Homozygous Black **Homozygous Polled** **PB SM**
 ASA #4364159 9M BD: 1/14/2024



Act. BW	Adj. WW	Adj. YW	ADG	MARB	RE	BF	G+
67 88	648 103	1215 108	3.02 -	2.38 103	12.90 99	0.13 76	

SIRE LBRS GENESIS G69 **KBHR GUNSMOKE J131** KBHR E197
 DAM HOOK'S EAGLE 6E **WS KALM K43** WS DOWN HOME E69

	CE	BW	WW	YW	MCE	MILK	MWW	
EPD	13.4	-0.2	96.1	145.2	6.9	27.4	75.3	
RANK	30	25	10	10	35	20	10	
	STAY	DOC	CW	YG	MARB	REA	\$API	\$TI
EPD	24.5	12.5	50.4	-0.25	0.76	1.05	194.9	107.5
RANK	1	40	5	95	2	15	1	1

- A really good bull who puts it all together on paper.
- High STAY.
- Stems from the biggest framed branch of the Zarzaparilla family tree. (Aaron).



9M Sells as Lot 56.

57 113M

Homozygous Black **Homozygous Polled** **PB SM**
 ASA #4364075 113M BD: 3/13/2024



Act. BW	Adj. WW	Adj. YW	ADG	MARB	RE	BF	G+
74 88	615 101	1156 101	3.21 -	2.32 92	15.95 116	0.25 109	

SIRE HHS MR ENTOURAGE 867B **LCDR RESERVE 210J** Lcdr MS ECHO 43E
 DAM ES CLASSIFIED CA46 **WS MISS FRONTIER F129** WS ALIDA A52

	CE	BW	WW	YW	MCE	MILK	MWW	
EPD	9.6	0.0	86.5	126.1	7.9	24.1	67.2	
RANK	75	30	25	35	20	45	30	
	STAY	DOC	CW	YG	MARB	REA	\$API	\$TI
EPD	17.4	15.1	18.8	-0.38	0.50	1.10	157.3	94.4
RANK	30	15	85	55	15	10	20	15

- Homo Black son out of Lcdr Reserve
- Low birth, good growth bull
- Dam is one of the many daughters out of our A52 cow, the dam of WS CEO



113M Sells as Lot 57.

58 51M

Homozygous Black **Homozygous Polled** **PB SM**
 ASA #4364099 51M BD: 2/5/2024



Act. BW	Adj. WW	Adj. YW	ADG	MARB	RE	BF	G+	ATM
92 114	616 99	1200 106	3.08 -	2.37 87	12.55 99	0.26 124		

SIRE HOOK'S GALILEO 210G **KLEIN KICK OFF K068** KLEIN MISS G13
 DAM HOOK'S EMPIRE 61E **WS JELLY BEAN J64** WS BAE B185

	CE	BW	WW	YW	MCE	MILK	MWW	
EPD	10.3	2.3	90.1	146.8	5.7	27.6	72.5	
RANK	70	70	15	10	55	20	15	
	STAY	DOC	CW	YG	MARB	REA	\$API	\$TI
EPD	16.7	14.9	59.2	-0.25	0.63	1.07	163.8	98.1
RANK	40	15	1	95	5	15	15	10

- Outcross
- Nice homo black bull
- Maternal and udders should be a strength (Aaron)



BREEDING FOR THE FUTURE BULLS

59 103L

Heterozygous Black
ASA #4231785

Homozygous Polled
103L



PB SM
BD: 3/17/2023

Act. BW	Adj. WW	Act. WT 1/6	ADG	MARB	RE	BF	
68	589	1415	2.87	3.04	13.68	0.29	
79	101	N/A	-	117	102	112	

SIRE HOOK'S BLACK HAWK 50B
HOOK'S EAGLE 6E
HOOK'S CRYSTAL 1C

DAM WS PRIME TIME B6
WS DOWN HOME E69
WS ZARZAPARILLA Z187

	CE	BW	WW	YW	MCE	MILK	MWW
EPD	19.6	-5.6	71.7	103.4	9.9	27.7	63.4
RANK	1	1	80	80	5	20	45
	STAY	DOC	CW	YG	MARB	REA	\$API
EPD	16.5	14.5	25.6	-0.35	0.66	1.15	181.0
RANK	40	20	60	65	4	10	3

- A low BW bull with some breeding experience covering a small group of cows for a buddy of mine this past summer.
- He is a full brother to the dam of Lot 56.
- Purple gene carrier.

60 191L

Heterozygous Black
ASA #4290826

Homozygous Polled
191L



PB SM
BD: 10/8/2023

Act. BW	Adj. WW	Act. WT 1/6		
100	578	1200		
109	106	N/A		

SIRE KBHR HIGH ROAD E283
3C HARMONY 0575H B
3C CROCUS 3427A BWF

DAM TJ POWER GRID 363Y
WS FALSETTO F114
WS MISS TRACY T50

	CE	BW	WW	YW	MCE	MILK	MWW
EPD	4.6	3.8	85.9	133.9	3.1	23.5	66.4
RANK	99	90	25	20	90	50	35
	STAY	DOC	CW	YG	MARB	REA	\$API
EPD	16.2	13.9	42.2	-0.42	0.43	1.00	139.2
RANK	45	25	15	35	20	25	40

- Very nice fall born bull out of 3C Harmony
- Dam is a beautiful cow and the last calf born out of the T50 cow - dam of WS All In, that Kenner Simmentals used for many years

A NOTE FROM THE SALE MANAGER

Welcome to the 2025 Wilkinson Farms Simmentals sale. We are extremely excited about the bulls and females being offered. This program is known for producing some of the top genetics in the Simmental breed. Through the years some of the breeds greatest AI sires and donor dams have sold through this sale. We feel that this year's offer has the potential to produce the next breed leading Herd Sire and donor female. The Schlenker family has been committed to producing cattle that keep moving the industry in a positive direction. They are students of the breed and are always striving to make the next generation better. Through the use of new genomic technology as well as good old fashioned breeding philosophy this set of bulls and females might be the best ever produced in this program, only time will tell. We have experienced some great times in the cattle industry with record high prices being paid for all classes of cattle. We have also experienced high input cost and weather challenges this past year in many parts of the country. With all this being said it proves why it is important to select your genetics from programs that have produced breed leading genetics for decades. They have survived the ups and downs we experience in the business, and this helps ensure your next genetic purchase has the potential to keep your cowherd equipped to take advantage of the good times and weather the bad.

As always, if you have questions about the offering or need assistance on sale day please reach out to any one of us on the Allied team.

Sincerely,
Marty Ropp, Corey Wilkins and Jared Murnin



BREEDING FOR THE FUTURE BRED HEIFERS



WS KEEN ON YOU K140 Sells as Lot 61.



WS ELITE E65 Dam of Lots 61 & 62.



WS LAKOTA L58 Sells as Lot 62.

61 WS KEEN ON YOU K140

Red Homozygous Polled PB SM
ASA #4152735 K140 BD: 10/19/2022



Act. BW	Adj. WW	Adj. YW	MARB	RE	BF
90	N/A	N/A	2.26	9.88	0.08
103	N/A	N/A	N/A	N/A	N/A

SIRE CDI ABUNDANCE 391C DAM WS PRIME BEEF Z8
9 MILE ABUNDANCE 7507 WS ELITE E65
CDI MS XPECTATION 80Z WS MAJESTIC Z133

EPD	CE	BW	WW	YW	MCE	MILK	MWW	
RANK	95	85	4	3	65	35	10	
EPD	STAY	DOC	CW	YG	MARB	REA	\$API	\$TI
RANK	80	80	5	40	20	20	40	10

Bred 6/7/24 to CLRS Kerosene (4031962). Due 3/19/25. Confirmed bull calf.

PM	CE	BW	WW	YW	MCE	MILK	MWW	STAY	DOC	CW	YG	MARB	REA	\$API	\$TI
EPDs	10.6	1.8	92.1	142.7	5.3	23.3	69.3	17.4	5.6	40.9	-0.41	0.46	1.10	156.8	94.8
RANK	65	60	10	10	60	50	20	30	95	15	40	10	10	15	10

- Fall born heifer out of the E65 donor
- Maternal sister to Lots 1-4 & Lot 62
- 9 EPDs in the top 20% of the breed
- The 9 Mile Abundance daughters are great cows

62 WS LAKOTA L58

Red Homozygous Polled PB SM
ASA #4231817 L58 BD: 2/18/2023



Act. BW	Adj. WW	Adj. YW	MARB	RE	BF
65	485	886	2.92	10.74	0.17
ET	ET	ET	100	100	100

SIRE HOOK'S EMPIRE 61E DAM WS PRIME BEEF Z8
WS JAM-PACKED 88J WS ELITE E65
WS ETIQUETTE E131 WS MAJESTIC Z133

EPD	CE	BW	WW	YW	MCE	MILK	MWW	
RANK	15	10	15	10	10	45	20	
EPD	STAY	DOC	CW	YG	MARB	REA	\$API	\$TI
RANK	5	70	25	70	15	60	5	10

Bred 6/17/24 to WS Crescendo (4231769). Due 3/29/25. Confirmed bull calf.

PM	CE	BW	WW	YW	MCE	MILK	MWW	STAY	DOC	CW	YG	MARB	REA	\$API	\$TI
EPDs	13.9	-0.8	85.1	133.2	9.4	25.6	68.1	17.8	10.8	29.4	-0.33	0.48	0.81	164.5	94.5
RANK	20	15	25	20	10	30	25	25	60	45	75	10	65	10	10

- Full sister to Lots 2-4
- 11 EPDs in the top 20% of the breed
- Bred to WS Crescendo, full brother to WS Legend –our second high selling red bull to Schnabel Simmentals in 2024 sale

BREEDING FOR THE FUTURE BRED HEIFERS

Prior to purchasing 911Z from Bar CK in 2021, her track record of raising bulls and females that turned into quality breed-changers, was exceptional. Her first daughters at Wilkinson Farms calved last year and look like they're going to be nice cows. Many of the females born to date are at the top of our heifer pens. Her high level of fertility has been on display here, not only in her breeding, but also in her embryo production. Her flushes have produced 20, 24, 9, and most recently 31 in December, plus an earlier IVF that yielded 34. Several of her conventional flush embryos conception rate have been 90% or higher. Here is an opportunity to get in on some of her genetics with four sons selling as Lots 32-35 and two daughters: Lots 63 and 64. Jordan C. Schlenker



BAR CK MS 6225 911Z Dam of Lots 63 & 64.

63 WS MS LUXURY L4



Homozygous Black ASA #4231812 Homozygous Polled L4 3/4 SM 1/4 AN BD: 1/9/2023

Act. BW	Adj. WW	Adj. YW	MARB	RE	BF
62	625	970	4.37	13.5	0.38
ET	ET	ET	113	113	158



SIRE HOOK'S BEACON 56B DAM G A R SELECTIVE
 CLRS GUARDIAN 317G BAR CK MS 6225 911Z
 CLRS ALWAYS XCELLENT BAR CK MS 925S

	CE	BW	WW	YW	MCE	MILK	MWW	
EPD	20.0	-5.9	73.8	110.9	10.7	19.8	56.3	
RANK	2	1	60	65	10	85	80	
	STAY	DOC	CW	YG	MARB	REA	\$API	\$TI
EPD	21.9	6.3	20.1	-0.23	0.77	0.75	188.1	96.6
RANK	2	99	90	50	10	40	1	10

Bred 6/27/24 to KBHR Absolute (4104243). Due 4/8/25. Calf sex unknown.

PM	CE	BW	WW	YW	MCE	MILK	MWW	STAY	DOC	CW	YG	MARB	REA	\$API	\$TI
EPDs	18.3	-3.9	78.0	124.4	10.3	23.2	62.0	19.7	10.8	29.5	-0.28	0.69	0.95	187.9	99.2
RANK	2	1	50	35	3	50	50	10	60	45	90	2	35	1	4

WS Ms Luxury L4 is a daughter of 911Z donor cow. She is one of the top females from the 2022 heifer crop. She has a beautiful phenotype and a great set of EPDs. Her mating to KBHR Absolute should be a good one.

64 WS LAINEY L50



Homozygous Black ASA #4231837 Homozygous Polled L50 3/4 SM 1/4 AN BD: 2/14/2023

Act. BW	Adj. WW	Adj. YW	MARB	RE	BF
70	549	875	3.78	11.37	0.29
ET	ET	ET	98	95	121



SIRE HOOK'S BEACON 56B DAM G A R SELECTIVE
 CLRS GUARDIAN 317G BAR CK MS 6225 911Z
 CLRS ALWAYS XCELLENT BAR CK MS 925S

	CE	BW	WW	YW	MCE	MILK	MWW	
EPD	21.5	-3.4	85.8	124.3	11.7	19.8	62.3	
RANK	1	10	20	35	3	85	50	
	STAY	DOC	CW	YG	MARB	REA	\$API	\$TI
EPD	21.0	5.0	10.4	-0.20	0.64	0.49	180.6	97.4
RANK	3	99	99	60	15	85	2	5

Bred 6/1/24 to KBHR Absolute (4104243). Due 3/29/25. Confirmed heifer calf.

PM	CE	BW	WW	YW	MCE	MILK	MWW	STAY	DOC	CW	YG	MARB	REA	\$API	\$TI
EPDs	19.2	-2.6	84.0	131.2	10.9	23.2	65.0	19.2	10.2	24.7	-0.27	0.63	0.82	184.4	99.6
RANK	1	3	30	25	2	50	35	10	70	60	90	4	60	2	4

•WS Lainey L50 is a daughter of 911Z donor cow.
 •She is attractively feminine in a moderate frame.
 •Should make a good cow.





WS LUNA L23 Sells as Lot 66.

65 WS LILA L10

Homozygous Black ASA #4231678 Homozygous Polled L10 PB SM
BD: 1/17/2023

Act. BW	Adj. WW	Adj. YW	MARB	RE	BF
76	556	868	3.13	10.35	0.21
106	100	101	67	105	124

G+ **ATM**

SIRE WS PROCLAMATION E202 DAM LCDR ALIBI 106E
KBHR HERO H109 WS JUNIPER J22
KBHR E197 WS GEMMA G35

CE	BW	WW	YW	MCE	MILK	MWW
11.7	1.1	76.6	113.4	8.0	27.7	65.9
50	50	55	60	20	20	35

STAY	DOC	CW	YG	MARB	REA	\$API	\$TI
16.2	8.5	24.0	-0.20	0.34	0.70	142.0	83.0
45	85	65	99	25	85	35	40

Bred 6/2/24 to Hook's Galileo (3563620). Due 3/14/25. Confirmed heifer calf.

CE	BW	WW	YW	MCE	MILK	MWW	STAY	DOC	CW	YG	MARB	REA	\$API	\$TI
14.6	-0.7	83.2	126.3	10.2	32.0	73.6	17.2	14.1	34.5	-0.19	0.79	0.70	178.7	100.8
15	20	30	30	4	3	10	30	25	25	95	1	85	3	3

- All homo black pedigree & mating
- Due with an early March heifer calf

66 WS LUNA L23

Homozygous Black ASA #4231661 Homozygous Polled L23 PB SM
BD: 1/23/2023

Act. BW	Adj. WW	Adj. YW	MARB	RE	BF
61	555	885	4.64	11.06	0.25
87	95	99	133	98	119

G+ **ATM**

SIRE WS PROCLAMATION E202 DAM KBHR NIGHTWATCH C114
WS ENHANCEMENT 25H WS JAMAIA J73
WS SWEET SIXTEEN F16 WS BLACK EMERALD E19

CE	BW	WW	YW	MCE	MILK	MWW
15.2	-1.4	85.4	134.7	10.2	27.6	70.2
10	10	25	20	4	20	20

STAY	DOC	CW	YG	MARB	REA	\$API	\$TI
15.5	15.0	34.6	-0.17	0.64	0.70	171.3	99.8
55	15	30	99	4	85	5	4

Bred 6/2/24 to Hook's Galileo (3563620). Due 3/14/25. Confirmed heifer calf.

CE	BW	WW	YW	MCE	MILK	MWW	STAY	DOC	CW	YG	MARB	REA	\$API	\$TI
16.4	-1.9	87.7	137.1	11.3	32.0	75.7	16.8	17.4	40.1	-0.17	0.94	0.70	193.2	109.1
5	10	20	15	2	3	5	35	4	15	95	1	85	1	1

- Beautiful Enhancement daughter
- 12 EPDs in the top 20% of the breed
- High marbling pedigree and mating

67 WS LORENE L27

Red ASA #4231822 Homozygous Polled L27 PB SM
BD: 2/2/2023

Act. BW	Adj. WW	Adj. YW	MARB	RE	BF
75	513	836	2.48	11.64	0.2
98	102	97	70	92	91

G+

SIRE HOOK'S FULL FIGURES 11F DAM KBHR SNIPER E036
WS 38 SPECIAL 20H WS GLOW G25
WS KILLING TIME E38 WS EMBER E52

CE	BW	WW	YW	MCE	MILK	MWW
15.9	-0.9	73.6	117.0	9.2	33.5	70.3
10	15	70	50	10	2	20

STAY	DOC	CW	YG	MARB	REA	\$API	\$TI
18.3	12.7	37.3	-0.41	0.09	1.01	143.7	80.3
20	40	20	45	70	25	35	50

Bred 6/2/24 to WS Jam-packed (3911959). Due 3/14/25. Confirmed heifer calf.

CE	BW	WW	YW	MCE	MILK	MWW	STAY	DOC	CW	YG	MARB	REA	\$API	\$TI
14.5	-0.3	83.3	131.8	8.0	27.7	69.3	19.4	14.8	39.0	-0.40	0.31	1.06	157.8	89.1
15	20	30	20	20	20	20	10	15	20	45	25	15	15	20

- Calving ease and maternal pedigree
- Mating with Jam-packed could be exciting
- Jam-packed sire group was one of our best this last year



BREEDING FOR THE FUTURE BRED HEIFERS

68

WS LUCY L29

Red Homozygous Polled
ASA #4231714 L29



PB SM
BD: 2/5/2023

Act. BW 63 TWIN	Adj. WW 525 TWIN	Adj. YW 792 TWIN	MARB 2.42 100	RE 11.4 100	BF 0.09 100	G+
-----------------------	------------------------	------------------------	---------------------	-------------------	-------------------	-----------

SIRE IR IMPERIAL D948 DAM WS CEO C155
BAR CK ADMIRAL 0053H WS JAZELYN J38
BAR CK MS 4856B 6112D WS EXOTIC E9

CE	BW	WW	YW	MCE	MILK	MWW
12.1	0.1	81.0	120.5	8.1	26.2	66.6
45	30	40	40	20	25	30

STAY	DOC	CW	YG	MARB	REA	\$API	\$TI
18.4	15.4	31.4	-0.37	0.74	1.14	174.1	97.9
20	15	40	60	2	10	4	5

Mating with WS Crescendo (4231769):

CE	BW	WW	YW	MCE	MILK	MWW	STAY	DOC	CW	YG	MARB	REA	\$API	\$TI
12.7	0.0	80.3	123.0	9.0	26.7	66.7	16.8	13.5	27.1	-0.36	0.65	0.99	166.6	94.8
35	25	40	35	10	25	30	35	30	55	60	3	25	10	10

Mating with CLRS Kerosene (4231769):

CE	BW	WW	YW	MCE	MILK	MWW	STAY	DOC	CW	YG	MARB	REA	\$API	\$TI
12.9	0.5	83.9	125.1	6.7	23.9	65.7	19.8	8.6	32.5	-0.39	0.64	1.16	172.0	95.8
30	20	30	35	35	45	35	10	85	35	50	3	10	5	10

Bred 6/14/24. Due 3/26/25. Confirmed heifer calf.

- Gentle heifer out of a favorite CEO daughter
- Maternal & carcass pedigree
- Full sister to Lot 69
- Either bred to WS Crescendo or CLRS Kerosene -breeding date is too close to determine



WS LOUELLA L70 Sells as Lot 71.

69

WS ETHEL L30

Heterozygous Black Homozygous Polled
ASA #4231835 L30



PB SM
BD: 2/5/2023

Act. BW 61 TWIN	Adj. WW 515 TWIN	Adj. YW 868 TWIN	MARB 3.57 100	RE 11.3 100	BF 0.16 100	G+
-----------------------	------------------------	------------------------	---------------------	-------------------	-------------------	-----------

SIRE IR IMPERIAL D948 DAM WS CEO C155
BAR CK ADMIRAL 0053H WS JAZELYN J38
BAR CK MS 4856B 6112D WS EXOTIC E9

CE	BW	WW	YW	MCE	MILK	MWW
12.7	1.8	80.0	117.5	8.6	26.2	66.1
35	65	45	50	15	25	35

STAY	DOC	CW	YG	MARB	REA	\$API	\$TI
20.2	15.9	22.7	-0.26	0.55	0.83	163.1	89.7
10	10	70	95	10	60	10	20

Bred 6/3/24 to LCDR Spellbound (4264388). Due 3/15/25. Confirmed bull calf.

CE	BW	WW	YW	MCE	MILK	MWW	STAY	DOC	CW	YG	MARB	REA	\$API	\$TI
14.9	0.9	82.3	125.5	9.9	27.9	68.9	19.3	15.4	25.4	-0.37	0.53	0.89	167.0	92.4
15	40	35	30	4	15	20	10	15	60	55	10	45	10	15

- The black full sister to Lot 68
- Very good disposition
- Mated to LCDR Spellbound, one of the top red bulls to sell in 2024

70

WS LELANI L39

Red Homozygous Polled
ASA #4231815 L39



PB SM
BD: 2/9/2023

Act. BW 76 100	Adj. WW 549 112	Adj. YW 858 108	MARB 2.62 73	RE 12.07 113	BF 0.13 76	ATM
----------------------	-----------------------	-----------------------	--------------------	--------------------	------------------	------------

SIRE CDI ABUNDANCE 391C DAM CDI AMBITION 255C
9 MILE ABUNDANCE 7507 WS HAZEL G43
CDI MS XPECTATION 80Z WS MISS COPPER C103

CE	BW	WW	YW	MCE	MILK	MWW
7.4	3.9	97.5	153.1	4.6	21.9	70.6
95	95	4	3	75	60	15

STAY	DOC	CW	YG	MARB	REA	\$API	\$TI
16.4	16.3	37.1	-0.50	0.22	1.09	137.3	90.1
45	10	20	10	40	15	45	20

Bred 6/2/24 to CDI/NF Honor Guard (3801515). Due 3/14/25. Confirmed heifer calf.

CE	BW	WW	YW	MCE	MILK	MWW	STAY	DOC	CW	YG	MARB	REA	\$API	\$TI
11.0	1.9	93.8	146.7	6.9	23.3	70.1	18.8	16.0	35.7	-0.53	0.31	1.18	153.3	92.7
55	60	10	10	35	50	20	15	10	25	3	25	5	20	15

- Powerful red heifer with a great performance record
- Mating to Honor Guard should be special

71

WS LOUELLA L70

Homozygous Black Homozygous Polled
ASA #4231805 L70



5/8 SM 3/8 AN
BD: 3/5/2023

Act. BW 82 105	Adj. WW 599 110	Adj. YW 982 104	MARB 3.29 79	RE 14.72 123	BF 0.3 115	G+
----------------------	-----------------------	-----------------------	--------------------	--------------------	------------------	-----------

SIRE BRIDLE BIT ECLIPSE E744 DAM GW-WBF SUBSTANCE 820Y
HOOK'S GALILEO 210G WS DORCAS D247
HOOK'S EVITA 18E WS MISS DORCAS Y214

CE	BW	WW	YW	MCE	MILK	MWW
9.2	0.5	81.2	120.5	5.7	31.7	72.3
90	60	30	45	70	5	10

STAY	DOC	CW	YG	MARB	REA	\$API	\$TI
17.0	14.6	40.5	-0.29	0.53	0.87	142.6	87.4
25	25	30	30	25	20	35	30

Bred 6/2/24 to KBHR Bold Ruler (3789539). Due 3/14/25. Confirmed bull calf.

CE	BW	WW	YW	MCE	MILK	MWW	STAY	DOC	CW	YG	MARB	REA	\$API	\$TI
12.8	-1.0	81.5	127.4	8.2	28.1	68.7	17.8	16.8	36.2	-0.23	0.68	0.68	170.5	96.4
50	30	30	30	30	20	20	20	10	40	45	2	50	5	10

- High performing heifer with several 100+ indexes
- Dam has a 106 WW index on 6 calves
- A Bold Ruler bull calf should be a good one

72 WS LUCA L74

Red Homozygous Polled PB SM
 ASA #4231734 L74 BD: 3/8/2023

Act. BW	Adj. WW	Adj. YW	MARB	RE	BF		
64	492	884	3.07	11.47	0.16		
84	88	96	67	100	84		

73 WS LIVVY L86

Red Homozygous Polled PB SM
 ASA #4231809 L86 BD: 3/16/2023

Act. BW	Adj. WW	Adj. YW	MARB	RE	BF	
76	549	885	3.13	12.52	0.16	
102	92	93	63	108	73	

SIRE TJ HEISMAN 388F DAM WS OUTCROSS C164
BRIDLE BIT HERSHEL H027 WS GILLIANNA G21
 BRIDLE BIT MISS E7102 WS MYSTERY MAKER Y85

CE	BW	WW	YW	MCE	MILK	MWW
14.6	-2.9	72.9	114.0	9.0	24.0	60.3
RANK 15	3	70	55	10	45	60

STAY	DOC	CW	YG	MARB	REA	\$API	\$TI
17.0	12.1	35.6	-0.26	0.65	0.66	171.9	94.2
RANK 35	45	25	95	3	90	5	10

Bred 6/20/24 to LCDR Spellbound (4264388). Due 4/1/25. Confirmed bull calf.

CE	BW	WW	YW	MCE	MILK	MWW	STAY	DOC	CW	YG	MARB	REA	\$API	\$TI
15.8	-1.5	78.9	123.8	10.1	26.8	66.1	17.5	13.5	31.9	-0.36	0.59	0.78	171.4	94.9
RANK 10	10	45	35	4	25	30	30	30	35	60	5	70	5	10

- A red Herschel heifer who is better than performance numbers indicate as her dam was sick last year
- An outcross pedigree for red cattle
- Bred to the exciting LCDR Spellbound bull

SIRE KBHR ALL AMERICAN G104 DAM KBHR SNIPER E036
A RYMO AMERICAN KID E69J WS HADDIE H11
 MISS LOLA C69F WS MISS REGAL Z148

CE	BW	WW	YW	MCE	MILK	MWW
9.5	1.5	76.5	108.0	6.0	27.3	65.4
RANK 80	55	55	70	50	20	35

STAY	DOC	CW	YG	MARB	REA	\$API	\$TI
17.8	16.7	22.7	-0.43	0.54	0.89	152.7	87.8
RANK 25	10	70	35	10	45	20	25

Bred 6/2/24 to CDI/NF Honor Guard (3801515). Due 3/14/25. Confirmed bull calf.

CE	BW	WW	YW	MCE	MILK	MWW	STAY	DOC	CW	YG	MARB	REA	\$API	\$TI
12.1	0.7	83.4	124.1	7.6	26.1	67.7	19.5	16.2	28.0	-0.50	0.47	1.08	161.4	91.6
RANK 40	35	30	35	25	25	25	10	10	50	10	10	15	15	15

- Red heifer bred to Honor Guard
- Rich maternal history behind this girl
- Granddam is the Z148 donor, our oldest cow on the ranch

ASA Quick Reference to EPDs, Indexes and \$Values

EXPECTED PROGENY DIFFERENCES (EPDs): EPDs are the most accurate and effective tool available for comparing genetic levels. In using EPDs, the difference between two sires' EPDs represents the unit difference expected in the performance of their progeny. For example, if sires A and B have EPDs of +10 and -5, a 15-unit difference would be expected in their progeny (moving from -5 to +10 yields 15 units). Key to using EPDs is knowing in what units they are expressed. For example, if the above case referred to weaning weight EPDs, sire A would be expected to sire 15 pounds more weaning weight than sire B. If calving ease was the trait, sire A would be expected to sire 15 percent more unassisted births in first-calf heifers; in other words, if sire B sired 30 assists in a group of 100 heifers, we would expect sire A to require 15 assists. A percentile-ranking chart is required to determine where a bull's EPDs rank him relative to other bulls in the breed. For more detailed information about EPDs and \$ indexes, visit www.simmental.org.

Listed below are the units in which ASA EPDs are expressed:

- ALL-PURPOSE INDEX (API): Dollars per cow exposed under an all-purpose-sire scenario.
- BACK FAT (BF): Inches of carcass backfat at 475 days.
- BIRTH WEIGHT (BW): Pounds of birth weight.
- CALVING EASE (CE): Percent of unassisted births when used on heifers.
- CARCASS WEIGHT (CW): Pounds of carcass weight at 475 days.
- DOCILITY (DOC): Percent of offspring receiving a disposition score of 1 (docile).
- MATERNAL CALVING EASE (MCE): Percent of unassisted births in first-calving daughters.
- MILK (MLK): Pounds of weaning weight due to milk.
- MARBLING (MARB): Carcass marbling score at 475 days.
- MATERNAL WEANING WEIGHT (MWW): Pounds of weaning weight due to milk and growth.
- RIBEYE AREA (REA): Square inches of carcass ribeye at 475 days.
- TERMINAL INDEX (TI): Dollars per cow exposed under a terminal-sire scenario.
- WEANING WEIGHT (WW): Pounds of weaning weight.
- YEARLING WEIGHT (YW): Pounds of yearling weight.
- YIELD GRADE (YG): Carcass yield grade score at 475 days.

\$ INDEXES: Though EPDs allow for the comparison of genetic levels for many economically important traits, they only provide pieces of the economic puzzle. This is where \$ indexes come in. Through well-conceived, rigorous mathematical computation, \$ indexes blend EPDs and economics to estimate an animal's overall impact on integrated commercial production. The same technology that led to the dramatic progress in swine, poultry and dairy genetics over the last several decades was used to develop the following \$ indexes:

- ALL-PURPOSE INDEX (API): Evaluates sires for use on the entire cow herd (bred to both Angus first-calf heifers and mature cows) with the portion of their daughters required to maintain herd size retained and the remaining heifers and steers put on feed and sold grade and yield.
- TERMINAL INDEX (TI): Evaluates sires for use on mature Angus cows with all offspring put on feed and sold grade and yield.

For more detailed information about EPDs and \$ indexes, visit: www.simmental.org

SERVICE SIRES

NAME	BREEDS	CE	BW	WW	YW	MCE	MILK	MWW	STAY	DOC	CW	YG	MARB	RE	\$API	\$TI
HOOK'S GALILEO 210G	3563620	17.5	-2.3	89.7	139.6	12.4	36.6	81.4	19.2	19.7	49.0	-0.16	1.23	0.71	205.4	114.8
LCDR SPELLBOUND 295L	4264388	16.8	0.0	84.9	133.9	11.0	29.5	71.8	17.4	14.7	31.3	-0.44	0.52	0.89	169.4	96.5
CDI/NF HONOR GUARD 267H	3801515	14.6	-0.2	90.6	139.4	9.2	24.8	70.1	20.8	15.6	36.1	-0.54	0.40	1.22	169.3	96.7
CLRS KEROSENE 915K	4031962	13.6	0.7	86.6	130.1	5.3	21.7	64.9	21.2	2.0	33.0	-0.40	0.54	1.16	171.7	95.3
KBHR ABSOLUTE K125	4104243	16.5	-1.7	82.3	138.1	10.0	26.7	67.8	18.0	15.3	42.3	-0.32	0.59	1.17	177.3	98.6
WS JAM-PACKED 88J	3911959	12.9	0.5	94.2	149.2	6.6	22.0	69.0	21.4	16.8	43.5	-0.38	0.52	1.12	175.1	100.1
KBHR BOLD RULER H152	3789539	16.3	-2.5	81.5	133.5	10.7	24.3	65.0	18.9	18.9	34.4	-0.16	0.82	0.48	190.8	103.3
WS CRESCENDO 120L	4231769	13.2	-0.2	79.7	125.8	10.0	27.2	66.9	15.0	11.5	26.1	-0.31	0.54	0.81	158.6	92.8



Hook's Galileo 210G



LCDR Spellbound 295L



KBHR Absolute K125



CLRS Kerosene 915K

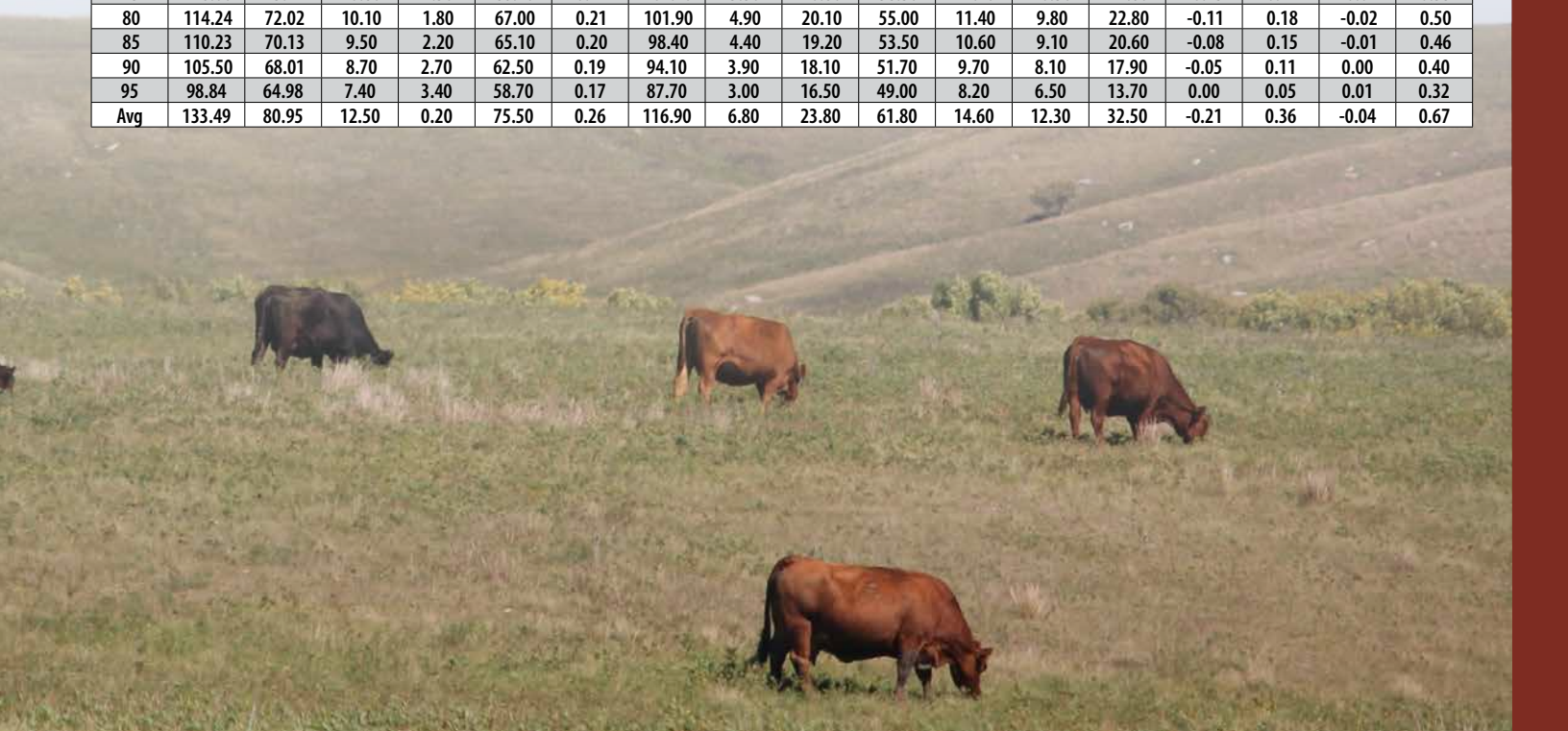


2025 PUREBRED SIMMENTAL PERCENTILE TABLE

%	API	TI	CE	BW	WW	ADG	YW	MCE	MLK	MWW	STY	DOC	CWT	YG	MRB	BF	REA
1	185.79	105.06	18.70	-3.70	103.50	0.38	161.80	11.20	34.10	80.30	22.60	19.20	57.80	-0.56	0.76	-0.12	1.34
2	179.45	102.27	17.80	-3.10	100.10	0.36	155.90	10.60	32.70	78.40	21.60	18.20	53.50	-0.54	0.68	-0.11	1.27
3	175.43	100.43	17.20	-2.60	98.20	0.35	152.20	10.20	31.90	77.00	21.10	17.60	51.10	-0.53	0.64	-0.11	1.23
4	172.89	99.07	16.70	-2.30	96.80	0.34	149.70	9.90	31.30	76.00	20.60	17.20	49.20	-0.52	0.60	-0.11	1.20
5	170.43	97.89	16.30	-2.10	95.50	0.34	147.60	9.70	30.80	75.20	20.30	16.90	47.50	-0.51	0.57	-0.10	1.18
10	161.80	93.81	15.10	-1.30	91.40	0.31	140.40	8.80	29.10	72.40	19.30	15.60	42.40	-0.48	0.47	-0.10	1.10
15	156.22	91.15	14.30	-0.70	88.60	0.30	135.50	8.20	27.90	70.40	18.60	14.80	39.20	-0.47	0.40	-0.09	1.05
20	151.51	89.08	13.70	-0.30	86.40	0.29	131.70	7.70	26.90	68.90	18.10	14.20	36.80	-0.45	0.35	-0.09	1.01
25	147.50	87.18	13.20	0.00	84.50	0.28	128.40	7.40	26.10	67.40	17.60	13.60	34.80	-0.44	0.31	-0.09	0.98
30	143.94	85.54	12.80	0.30	82.80	0.27	125.40	7.00	25.40	66.20	17.20	13.20	33.00	-0.43	0.27	-0.08	0.96
35	140.68	84.09	12.40	0.60	81.30	0.26	122.80	6.70	24.80	65.00	16.80	12.70	31.40	-0.42	0.24	-0.08	0.93
40	137.59	82.70	12.10	0.90	80.00	0.25	120.20	6.40	24.20	63.90	16.40	12.30	30.00	-0.41	0.21	-0.08	0.91
45	134.81	81.36	11.70	1.10	78.80	0.25	118.00	6.10	23.60	62.80	16.00	11.90	28.70	-0.40	0.18	-0.08	0.88
50	132.14	80.11	11.40	1.40	77.60	0.24	115.90	5.80	23.00	61.70	15.50	11.60	27.30	-0.39	0.16	-0.07	0.86
55	129.42	78.89	11.00	1.60	76.40	0.23	113.80	5.60	22.40	60.60	15.10	11.20	26.00	-0.37	0.14	-0.07	0.84
60	126.82	77.67	10.70	1.80	75.20	0.23	111.60	5.30	21.80	59.50	14.60	10.80	24.70	-0.36	0.12	-0.07	0.82
65	124.15	76.39	10.30	2.00	74.00	0.22	109.40	5.00	21.20	58.50	14.10	10.40	23.40	-0.35	0.09	-0.07	0.80
70	121.64	75.20	9.90	2.30	72.80	0.21	107.20	4.70	20.50	57.40	13.60	9.90	22.00	-0.34	0.07	-0.06	0.77
75	118.97	74.03	9.50	2.50	71.40	0.21	104.90	4.40	19.80	56.30	13.10	9.40	20.70	-0.33	0.05	-0.06	0.75
80	116.45	72.80	9.00	2.80	70.00	0.20	102.30	4.10	19.10	55.20	12.50	8.80	19.20	-0.31	0.03	-0.06	0.72
85	113.67	71.42	8.40	3.10	68.30	0.19	99.50	3.70	18.30	54.00	11.90	8.10	17.50	-0.29	0.00	-0.05	0.69
90	110.55	69.72	7.60	3.60	66.30	0.18	95.80	3.20	17.20	52.50	11.10	7.10	15.40	-0.27	-0.03	-0.05	0.65
95	106.32	67.44	6.30	4.30	63.20	0.16	90.70	2.40	15.80	50.40	10.20	5.60	12.30	-0.23	-0.08	-0.04	0.58
Avg	132.14	80.11	11.40	1.40	77.60	0.24	115.90	5.80	23.00	61.70	15.50	11.60	27.30	-0.39	0.16	-0.07	0.86

2025 HYBRID PERCENTILE TABLE

%	API	TI	CE	BW	WW	ADG	YW	MCE	MLK	MWW	STY	DOC	CWT	YG	MRB	BF	REA
1	186.70	103.61	20.80	-5.60	101.30	0.40	162.40	12.50	35.00	80.20	21.90	20.30	66.50	-0.48	1.04	-0.10	1.22
2	179.85	101.05	19.70	-4.90	98.10	0.38	157.20	11.80	33.60	78.20	21.10	19.10	61.80	-0.45	0.93	-0.09	1.16
3	175.64	99.32	19.00	-4.40	96.00	0.37	153.60	11.40	32.70	76.80	20.50	18.40	59.00	-0.43	0.88	-0.09	1.11
4	172.75	98.14	18.50	-4.00	94.50	0.36	150.90	11.00	32.10	75.70	20.10	17.90	57.00	-0.42	0.83	-0.08	1.08
5	170.23	97.10	18.10	-3.70	93.40	0.36	148.70	10.80	31.60	74.90	19.80	17.60	55.30	-0.41	0.80	-0.08	1.05
10	161.95	93.77	16.80	-2.80	89.30	0.33	141.70	9.90	29.80	72.00	18.70	16.30	49.80	-0.37	0.69	-0.07	0.96
15	156.59	91.39	15.90	-2.20	86.60	0.32	136.80	9.30	28.60	70.00	18.00	15.50	46.20	-0.34	0.62	-0.07	0.90
20	152.35	89.48	15.20	-1.70	84.50	0.31	132.90	8.80	27.60	68.40	17.40	14.80	43.40	-0.32	0.57	-0.06	0.86
25	148.81	87.86	14.70	-1.30	82.60	0.30	129.80	8.40	26.90	67.10	16.90	14.30	41.20	-0.30	0.52	-0.06	0.82
30	145.53	86.32	14.20	-1.00	81.00	0.29	126.80	8.00	26.20	66.00	16.40	13.80	39.20	-0.28	0.48	-0.05	0.79
35	142.41	84.90	13.70	-0.60	79.50	0.28	124.10	7.70	25.60	64.90	15.90	13.40	37.40	-0.26	0.45	-0.05	0.76
40	139.38	83.54	13.30	-0.40	78.20	0.27	121.70	7.40	25.00	63.80	15.50	13.00	35.70	-0.25	0.42	-0.05	0.73
45	136.41	82.25	12.90	-0.10	76.80	0.27	119.30	7.10	24.40	62.80	15.10	12.60	34.10	-0.23	0.39	-0.04	0.70
50	133.49	80.95	12.50	0.20	75.50	0.26	116.90	6.80	23.80	61.80	14.60	12.30	32.50	-0.21	0.36	-0.04	0.67
55	130.57	79.61	12.20	0.40	74.20	0.25	114.50	6.50	23.20	60.80	14.20	11.90	31.00	-0.20	0.33	-0.03	0.65
60	127.64	78.22	11.80	0.70	73.00	0.24	112.10	6.20	22.70	59.70	13.70	11.60	29.60	-0.18	0.30	-0.03	0.62
65	124.61	76.79	11.40	0.90	71.60	0.24	109.80	5.90	22.10	58.70	13.30	11.20	28.00	-0.17	0.27	-0.03	0.59
70	121.48	75.27	11.00	1.20	70.20	0.23	107.30	5.60	21.50	57.50	12.70	10.80	26.50	-0.15	0.24	-0.02	0.56
75	118.00	73.71	10.60	1.50	68.70	0.22	104.70	5.30	20.80	56.30	12.10	10.30	24.80	-0.13	0.21	-0.02	0.53
80	114.24	72.02	10.10	1.80	67.00	0.21	101.90	4.90	20.10	55.00	11.40	9.80	22.80	-0.11	0.18	-0.02	0.50
85	110.23	70.13	9.50	2.20	65.10	0.20	98.40	4.40	19.20	53.50	10.60	9.10	20.60	-0.08	0.15	-0.01	0.46
90	105.50	68.01	8.70	2.70	62.50	0.19	94.10	3.90	18.10	51.70	9.70	8.10	17.90	-0.05	0.11	0.00	0.40
95	98.84	64.98	7.40	3.40	58.70	0.17	87.70	3.00	16.50	49.00	8.20	6.50	13.70	0.00	0.05	0.01	0.32
Avg	133.49	80.95	12.50	0.20	75.50	0.26	116.90	6.80	23.80	61.80	14.60	12.30	32.50	-0.21	0.36	-0.04	0.67



WILKINSON FARMS SIMMENTALS
Terry and Cathy Schlenker Family
7649 49th Street Southeast
Montpelier, ND 58472-9722

WILKINSON FARMS SIMMENTALS

THURSDAY

FEBRUARY 20, 2025 1:00 PM CST AT THE C-B SALE FACILITY
4 MILES SOUTH OF THE RANCH, MONTPELIER, NORTH DAKOTA

**BREEDING
FOR THE FUTURE** 

