

March
17

ALL TERRAIN



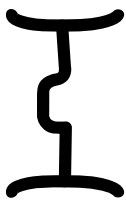
BULL AND FEMALE SALE



Walsh, Colorado

BRIDLE BIT SIMMENTALS SALE FACILITY || 1:00 PM (MT)

WELCOME TO THE SALE



BRIDLE BIT *Simmentals*

Please accept our heart felt thank you for considering bulls and females at this year's All Terrain Sale offering. We feel blessed to participate in the beef cattle business and always enjoy helping our customers achieve their goals.

As we all know, the beef business is at an all-time high, but this is not the time to be complacent. For decades, we have focused on traits that have a sizeable impact on our customers' bottom line and continue to move the needle forward as technology changes and evolves. This cannot be grandpa's way anymore.

We feel the more data we can collect the better opportunity our customers have to succeed. The bottom line to success for all of us is high quality BEEF. How can we produce the best beef with the least input? Bridle Bit has been able to produce top quality beef consistently with last year's harvest receiving 64% prime quality grade. We are still one of a few programs in the country collecting feed efficiency data and feel it is beginning to give our program an advantage.

New this year is Right Bull, powered by Top Genomics. With the help of Allied and Neogene a genomic makeup of your cow herd can be mated to our bull offering, helping assist in bull selection. Some have already taken advantage of this program and will come to the sale with a list of the best genomic matings based on their cow herd. Leoma Donsbach from Allied will be presenting how Right Bull could advance your cow herd on Sunday, March 16, in conjunction with our presale program that will be aired on Facebook Live.

Finally, a big thank you goes out to the staff of Allied Genetic Recourses along with our previous and potential customers. We look forward to discussing our offering with you!

Sincerely,

Chad Cook
719-529-0564

Austin Cook
719-529-1128

Rachel Hughes
719-353-1061

Jerrid Brisendine
719-353-1747

Megan Wait
719-523-3002

BRIDLE BIT SIMMENTALS

ERROLL COOK & SONS

PO Box 507, Walsh, CO 81090

Chad Cook 719-529-0564

bridlebitsimm@gmail.com

www.bridlebitsimmentals.com

SALE PARTNERS:

FAR OUT CATTLE RANCH

52966 CR V, Walsh, CO 81090

Jerrid Brisendine 719-353-1747

jerridb81@gmail.com

MEGAN WAIT

4501 CR P, Pritchett, CO 81064

719-523-3002

fouracescattle@gmail.com

Sale broadcast live online

VIDEOS AVAILABLE ONLINE AT
DVAUCTION.COM AND SUPERIORLIVESTOCK.COM

DVAuction
Broadcasting Real-Time Auctions



See page 6 for more information.



ALL TERRAIN

BULL SALE

March
17

BRIDLE BIT SIMMENTALS SALE FACILITY, WALSH, CO || 1:00 PM (MT)

SALE LOCATION

Bridle Bit Sale Facility, Walsh, CO
28065 CR 45, Walsh, CO 81090

One mile east of Walsh on the north side of the highway. Please see the map on page 2 for directions.

SCHEDULE OF EVENTS

Cattle may be viewed any time prior to sale day. Please call ahead of time.

SUNDAY, MARCH 16

All Day	Sale cattle on display
6:00 PM	Complimentary Dinner
6:30 PM	FaceBook Live Program

Guest speaker Leoma Donsbach, Data Genie. For more information, see page 2.

MONDAY, MARCH 17

11:00 AM	Lunch Served
1:00 PM	All Terrain Bull Sale

AUCTIONEER

Col. Tracy Harl 402-469-3852

SALE DAY PHONES

Chad Cook	719-529-0564
Marty Ropp, Allied Genetic Resources	406-581-7835
Corey Wilkins, Allied Genetic Resources	256-590-2487
Jared Murnin, Allied Genetic Resources	406-321-1542
Austin Cook	719-529-1128
Rachel Hughes	719-353-1061
Jerrid Brisendine	719-353-1747
Megan Wait	719-523-3002

RING STAFF

Ty Groshans	970-818-6016
Cody Johnson	970-630-1316

ACCOMMODATIONS

COBBLESTONE INN AND SUITES 27474 US HWY 287, Springfield, CO 81073	719-353-5050
HOLIDAY INN EXPRESS 1304 North Main Street, Lamar, CO 81052	719-931-4010
CORPORATE EAST HOTEL 1110 East Oklahoma Ave., Ulysses, KS 67880	620-356-5010

AIRPORTS

Denver International Airport (DIA)
Garden City Regional Airport
Springfield Municipal Airport
There are also two airstrips in Walsh, CO. Please call to make arrangements.

ANNOUNCEMENTS

Announcements made sale day take precedence over printed material in the catalog or other printed material associated with the sale.

LIABILITY

Owners, their agents, sales management, or any of the sale staff will not be held responsible for any personal injury, loss or accident while attending this sale.

CONDITIONS OF SALE

All animals will be sold in accordance with suggested guidelines of the American Simmental Association. Unless other conditions are stated in this book.

REGISTRATION AND UPDATED EPDS

All cattle will be registered in the American Simmental Association. All EPDS are the most current BOLT at the time of printing conducted by IGS and the American Simmental Association. Please note that EPDS may change from the time the sale catalog is printed until registration papers are transferred.

LIVESTOCK INSURANCE

Livestock mortality insurance will be available sale day. If bulls are left at the ranch we strongly suggest you insure your purchase. The bulls become your property when they are sold. In order to guarantee bulls valued at \$10,000 or more, we ask that you purchase insurance on your investment. If God forbid something happens and the new owner must use the insurance policy we will pay the new owner the cost of their premium at that time. Bridle Bit is happy to assist with questions. New owners can use their own insurance, or Jeff Thomas 406-581-8859 • jeffthomas138@gmail.com

TRUCKING / FEEDING OPTIONS

OPTION 1: A \$50 discount per bull will be given if taken home the day of the sale.
OPTION 2: Free delivery on \$10,000 purchase of bull(s) up to 500 miles.
OPTION 3: All bulls can be kept free of charge up until April 10, 2025. After that date, buyers will be charged \$3.50 per day/per bull.

BREEDING GUARANTEE

We stand behind all of our bulls and want you to be satisfied, so let us know as soon as possible if there are any problems. Scrotal measurements are actual (not adjusted) as reported by Dr. Birdsong at the time of fertility exam, and will be listed on the supplement sheet on sale day. All of our bulls have passed a fertility soundness exam unless indicated on the sale block. All bulls are guaranteed breeding sound.

FEED PROGRAM

Bulls were fed a high roughage ration after weaning while undergoing feed conversion testing. The ration consisted of corn silage, sorghum hay, alfalfa hay, oat hay, cracked corn and dried distillers with a target of 3.0 ADG. *Nutritionist Hans Hoeltzel, Hubbard Feeds 913-426-2055*

RETAINED SEMEN INTEREST

The buyer will receive full possession, full salvage value and 100% semen interest on all bulls sold unless otherwise noted or announced from the block. If a bull is collected, Far Out Cattle Ranch, Megan Wait and Bridle Bit Simmentals reserve the opportunity to a one time 30 unit package each for in herd use only.

HERD HEALTH

Birth: Bovine Ecolizer +C20
Branding: Inforce 3, Ultraback 7, Autogenous Bacterin, FerAppease
Weaning: Bovi-Shield Gold 5, Ultrabac 7, Autogenous Bacterin, FerAppease
Pre-Sale Bulls & Heifers: Clean Up pour-on, Dextomax
Pre-Sale Heifers: Vira Shield 6 + VL5 HB, Vira Shield 6+ L5 HB

All bulls selling are virgin bulls. All lots are AM, CA and NH free by pedigree. All lots are BVD free, and all bulls have passed a TRICH test.

Herd Vet: Southeast Colorado Vet Clinic, 1500 Main Street, Springfield, CO 81073
Dr. Rick Birdsong, DVM, 719-523-6828

sale management

Marty Ropp	406-581-7835
Corey Wilkins	256-590-2487
Jared Murnin	406-321-1542

ALLIED
GENETIC RESOURCES

www.alliedgeneticresources.com

PLEASE JOIN US *on Sunday night*



**ABOUT THE SPEAKER -
Leoma Donbach**
Data Genie Owner/Founder

The All Terrain sale group is honored to have Leoma Donsbach of Data Genie and Allied Genetic Resources in attendance for the first time.

We first got to know Leoma when she was employed at the American Simmental Association as Director of DNA and Total Herd Enrolment (THE) Services. She was a great fit to an organization that is driven on data and science. ASA members would realize in a short conversation on the phone her passion for the breed and its members. She thrives on accurate data collection when it is combined with science.

Although The ASA board of trustees passed a research project named Cow Herd Round-Up (CHR) during her time at the association, Leoma became the face of the project. She made videos, wrote articles and whatever else to help members take advantage of CHR. To this day CHR has been the most successful research project ever administered by the ASA. CHR is still being used by the ASA today. The project gives the members the opportunity to collect DNA on their entire herd at a reduced rate. This has added thousands of genotypes to the International Genetic Solutions (IGS) database.

After her stint with the ASA Leoma started her own business. Data Genie LLC is a comprehensive data and genomic management service dedicated to helping agricultural operations succeed. With a passion for engaging with producers of all breed affiliations, Leoma provides valuable insights on incorporating DNA and genomic testing technology to optimize genetic potential within registered and commercial herds.

We are hosting a dinner and program.

Featured speaker: *Leoma Donsbach, Data Genie*

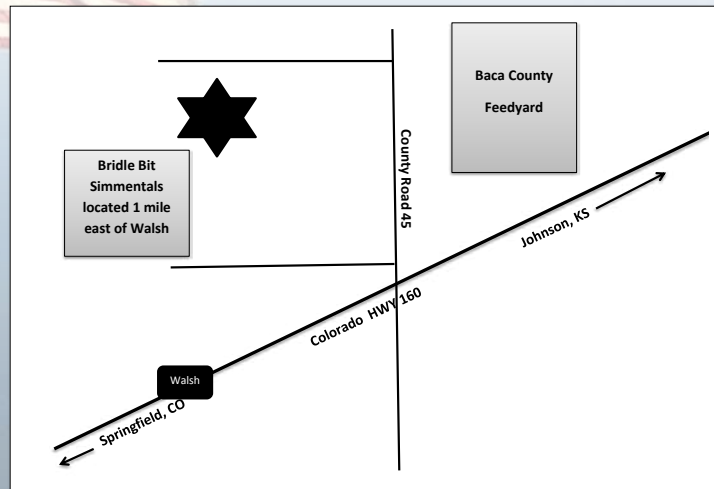
6:00 PM DINNER

6:30 PM PROGRAM

For those unable to attend, we will broadcast the program on Facebook live. Please RSVP to 719-529-0564.

There will be a drawing for a \$300 sale credit for those in attendance and a \$150 sale credit for those who join us on Facebook live.

**BRIDLE BIT SALE
FACILITY
28065 CR 45
WALSH, CO 81090**



Improved Buying Confidence with Greater Genomic **ASSURANCE**

Access to more and better information has always been key to making wise decisions. The evolution and improvement of genetic evaluation tools too has given us an ever-clearer picture of the true genetic makeup of cattle and thus a better view of the value proposition. RightMate, powered by Top Genomics LLC is taking the evaluation of genetics and genomics one giant step further. By combining specific genomic information with the long-proven value of EPDs, this new advancement in technology improves our depth and precision when evaluating the actual ability to transmit value and profit.

The 3 Accreditation Logos below are designed to simplify bull selection and improve buyer confidence by more accurately describing the genetics offered and by reducing risk. What this means to you as a customer is a much greater assurance that you are getting both what you want and need from the genetics you purchase. What it means to your seedstock provider is access to RightMate technology that simply sets them apart from the rest of the industry.



ACCREDITED GENOMIC PLUS – For the majority of producers who simply need consistent and balanced genetic improvement, without genomic setbacks, G+ Accredited bulls should be on your list for premium purchase. These sires will absolutely move you forward for both cost reduction and income producing traits and substantially reduce risk when compared to all other evaluation programs. It's simple, the right genes are in these bulls to help secure a profitable future and they have great EPDs to match!



ACCREDITED CALVING EASE – Simply find bulls with the ACE logo for third party Accredited, secure Calving Ease bulls. Though we have had tools in the past to assist in choosing heifer bulls, we've never had one nearly this effective. The reduced risk that comes with this genomic certification will simply make your decisions easier and your heifer calving season more successful. Purchase special purpose ACE bulls with confidence. They will deliver consistent and predictable calving ease.



ACCREDITED TERMINAL MATE – Just like an ATM machine makes it simpler to access your cash, the ATM Logo highlights bulls accredited to generate extra cash income as soon as your next calf crop! These bulls are meant specifically to use only on mature cows and for the purpose of adding performance, pay weight and end product value to market.

FROM THE SALE MANAGER



Welcome cattlemen to the 2025 All Terrain Bull & Female sale hosted by Bridle Bit Simmentals. Performance driven genetics, a magnitude of data collection, and incredible type has become the trademarks of the programs associated with the All Terrain Bull Sale.

The pursuit of genetic advancement and the unrelentless effort in delivering more service and value to customers are the driving forces of making the All Terrain Sale one of the most trusted seedstock producers in the business. Aggressive data collection surrounding genomics, scan data and feed intake data is provided in every herd bull candidate in the offering. The pursuit of more pounds, more size, more mature weight has become the norm in the current cattle cycle. Cattlemen have the opportunity to select for power and growth at the All Terrain while looking for efficiency at input costs. Customer service has also been at the forefront of the All Terrain program. Not only, does the program offer a strong warranty and delivery, but their feeder cattle marketing has been ramping up in the last few years. The program has assembled feeder cattle marketing alliances for smaller producers to market load lots of cattle. Several loads of All Terrain genetics have been bringing premiums on the video sales. The reputation of the All Terrain sired feeder cattle is as high as any. The cattle simply grade while keeping cost of gain in check.

The genetic offering in the 2025 All Terrain sale will once again have the attention of both seedstock and commercial producers both near and far. High accuracy sires along with a few fresh sire groups who offer genetic progression and will be built for more arid environments will be found from cover to cover. The female offering from a depth and quality will rival any set of opens who sell in 2025.

We hope you can join us on March 17th in Walsch, CO. If we can be any assistance to you, please do not hesitate in reaching out to us for service.

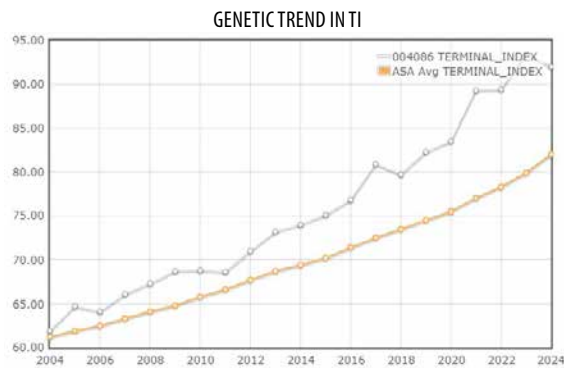
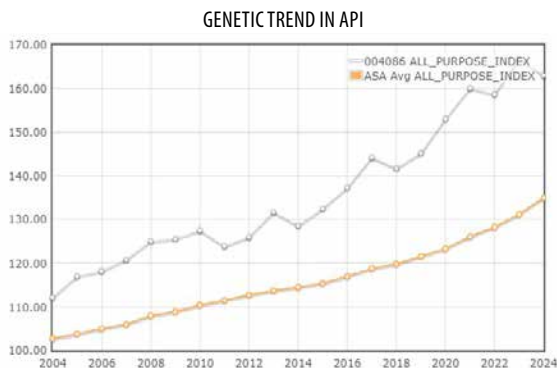
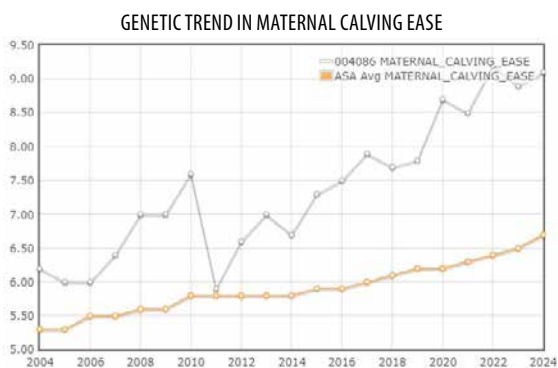
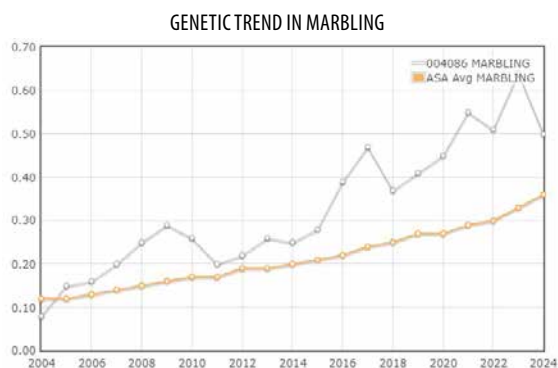
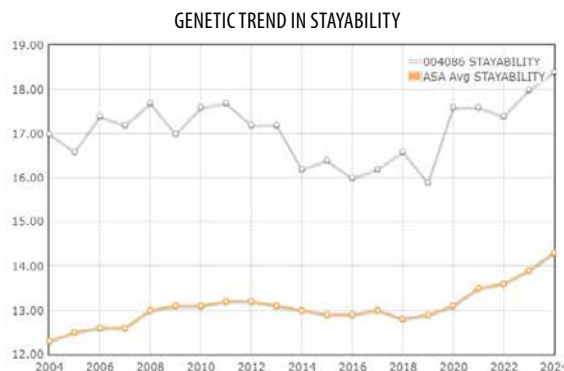
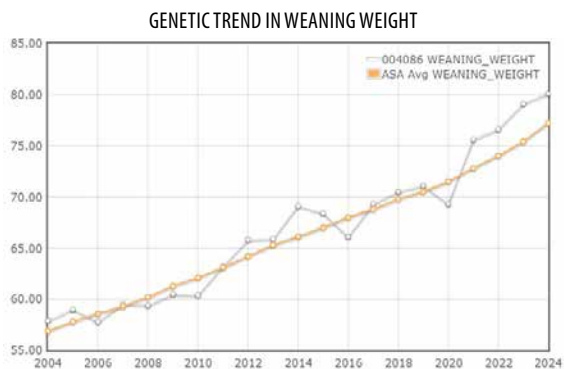
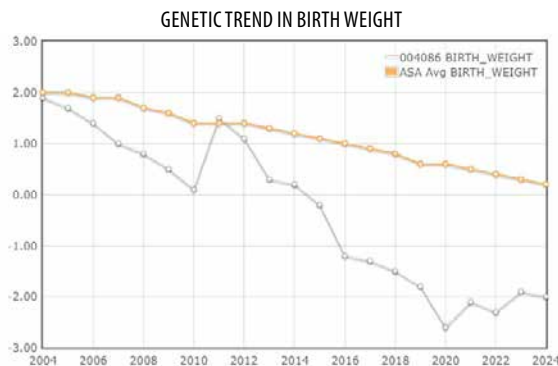
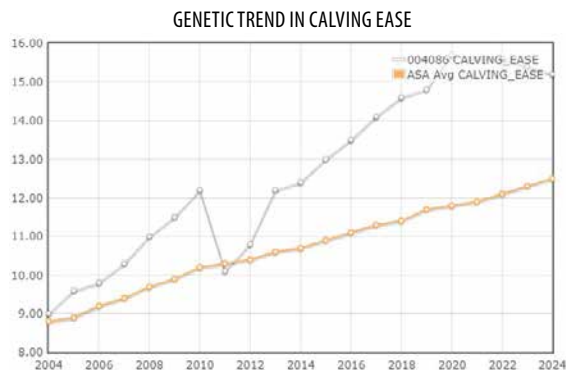
Sincerely,

Marty Ropp, Corey Wilkins and Jared Murnin



BRIDLE BIT SIMMENTAL VERSUS HYBRID SIMMENTAL

The charts below highlight the genetic trends in both the Bridle Bit Simmentals cattle and the overall population of SimAngus™ genetics over the years.



DVAuction

Broadcasting Real-Time Auctions

WATCH AND BID ONLINE FOR FREE

Visit www.DVAuction.com and Register. It's as easy as 1, 2, 3...

1. Create an account at www.DVAuction.com under the "create new account" tab.
2. Apply for bidding by clicking "apply for bidding" in the upper left corner of your screen, at least 24 hours prior to the auction.
3. Tune into the sale and make your purchases.

www.DVAuction.com

support@dvauction.com

402-316-5460 || 402-474-5557

SUPERIOR - HOW TO PARTICIPATE AS AN ABSENTEE BUYER

We have made preparations to bid and buy livestock through Superior Productions' "Click-To-Bid" service for those unable to attend in person on sale day. Please note that all of the lots in the sale will also be available for viewing online prior to sale day at www.superiorlivestock.com.

HERE'S HOW IT WORKS

CLICK-TO-BID

This is Superior's online bidding program for cattle buying. Please note that high speed internet is required – this is not for dial-up or satellite internet. Registration is free, but you must become a member of www.superiorclicktobid.com to sign up. Becoming a member is easy – just go to the homepage of www.superiorclicktobid.com and follow the out-lined steps to get started. Input your information and select a username and password. You will receive an e-mail confirming you are a member. From that point forward you just have to sign in and select the sale you would like to register for and once approved by the ranch you will receive an e-mail confirming which sale you are now registered for.

VIEWING THE AUCTION

The sale will be broadcast live in Hi-Definition on the internet at both www.superiorlivestock.com and www.superiorclicktobid.com. The video feed on the homepage of www.superiorlivestock.com looks the same as the video feed on TV and can be watched over a smartphone or tablet. Remember you can call in to bid whether watching on the TV or on the internet, but you must be a member of www.superiorclicktobid.com to "click-to-bid".

Bidders who are successful in making purchases via satellite or internet will be contacted by the ranch after the sale to settle payment and make shipping arrangements.



Bridle Bit is not only committed to supplying our customers with the best genetics. We also want to help market your calves. Ask us how Feeder Profit Calculator and Top Dollar Angus can assist in promoting your calves, regardless of your marketing strategy.

TOP THE MARKET.



Learn how Top Dollar Angus helps qualified calves earn a \$24/head premium on average at TopDollarAngus.com/EarnMore



 **SimGenetics**
PROFIT THROUGH SCIENCE
American Simmental Association

NO LIGHTWEIGHTS

Simmental calves are champions of the scale.

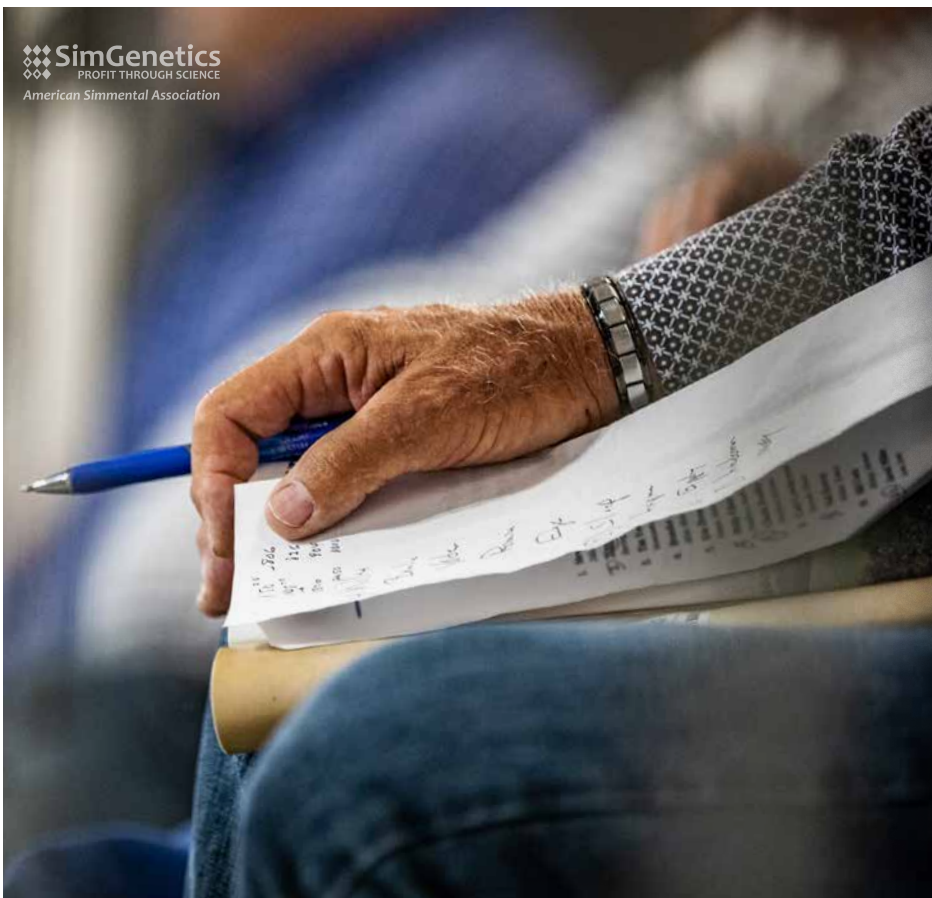
They reliably outperform straightbred calves in the feedyard — with better growth, better structure and fewer health problems.

They add pounds without sacrificing marbling, and they come with the **IGS Feeder Profit Calculator**, which factors genetics, health and management into true value.

Want low-risk, high-potential calves with earning capability?

STAND STRONG SIMMENTAL

406-587-4531 • simmental.org





BRIDLE BIT MR M4117 || Sells as Lot 1.

1 **BRIDLE BIT MR M4117**
 Homo Black || Homo Polled PB SM
 2/27/2024 M4117 ASA# 4353386

BRIDLE BIT RESOURCE G9117 KBHR CHISUM H160
BRIDLE BIT RECHARGE K256 **BRIDLE BIT MISS K282**
 BRIDLE BIT MISS G948 BRIDLE BIT MISS A361

	CE	BW	WW	YW	ADG	MCE	MILK	MWW
EPD	12.7	-1.3	80.4	133.1	0.33	8.6	30.1	70.3
Rank	35	15	45	25	10	15	10	20

	STAY	DOC	CW	YG	MARB	REA	API	TI
EPD	19.1	13.3	51.1	-0.27	0.56	0.96	170.3	95.4
Rank	15	35	5	90	10	30	10	10

	BW	ADJ. WW	ADJ. YW	ADJ. IMF	ADJ. BF	ADJ. REA	FRAME	ADG	FEED CONV	RFI
Value	82	738	1333	4.69	0.28	14.2	6-	2.93	8.49	3.29
Ratio	107	109	111	121	133	101	-	87	69	-



2 **BRIDLE BIT MR M4133**
 Homo Black || Homo Polled PB SM
 3/7/2024 M4133 ASA# 4353400

BRIDLE BIT RESOURCE G9117 BRIDLE BIT ECLIPSE E744
BRIDLE BIT RECHARGE K256 **BRIDLE BIT MISS K260**
 BRIDLE BIT MISS G948 BRIDLE BIT MISS H094

	CE	BW	WW	YW	ADG	MCE	MILK	MWW
EPD	18.1	-3.7	84.6	138.2	0.34	10.6	28.6	70.9
Rank	2	2	30	15	10	3	15	15

	STAY	DOC	CW	YG	MARB	REA	API	TI
EPD	17.7	17.5	45.5	-0.25	0.45	0.82	174.5	98.6
Rank	30	3	10	90	15	60	5	10

	BW	ADJ. WW	ADJ. YW	ADJ. IMF	ADJ. BF	ADJ. REA	FRAME	ADG	FEED CONV	RFI
Value	74	689	1228	3.71	0.22	14.5	5+	3.23	6.48	0.48
Ratio	97	102	103	96	105	103	-	96	100	-





BRIDLE BIT MR M4133 || Sells as Lot 2.



BRIDLE BIT RECHARGE K256 || Sire of Lots 1-4.

BRIDLE BIT RECHARGE K256

Homo Black || Homo Polled PB SM
 2/5/2022 K256 ASA# 4058272

SIRE: BRIDLE BIT RESOURCE G9117

DAM: BRIDLE BIT MISS G948

MGS: COLORADO BRIDLE BIT E752

CE	BW	VW	YW	MCE	MILK	MWW	STAY
16.1	-2.7	84.7	139.4	10.3	31.0	73.3	16.1
10	4	30	15	3	10	10	45
DOC	CW	YG	MARB	BF	REA	API	TI
15.9	51.0	-0.35	0.46	-0.05	1.21	168.2	98.2
10	5	65	15	80	4	10	10

We have eagerly awaited the arrival of the Recharge sire group and are excited for what we see in his first bull crop. The bulls are moderate, dense in their build and are one of the most phenotypical pleasing sire groups we have in the 2025 offering. They offer balanced data and will add value across the board.

RECHARGE SONS



BRIDLE BIT MR M4115 || Sells as Lot 3.



BRIDLE BIT MR M487 || Sells as Lot 4.

3

BRIDLE BIT MR M4115

Homo Black || Homo Polled PB SM

2/27/2024 M4115 ASA# 4353384

BRIDLE BIT RESOURCE G9117 KBHR CIMARRON F151
BRIDLE BIT RECHARGE K256 **BRIDLE BIT MISS K206**
 BRIDLE BIT MISS G948 BRIDLE BIT MISS F848

	CE	BW	WW	YW	ADG	MCE	MILK	MWW
EPD	17.8	-4.0	80.9	125.5	0.28	10.9	27.1	67.5
Rank	3	1	45	35	30	2	25	30
	STAY	DOC	CW	YG	MARB	REA	API	TI
EPD	17.6	10.9	28.4	-0.35	0.19	0.94	157.9	90.1
Rank	30	60	55	65	50	30	20	25

	BW	ADJ. WW	ADJ. YW	ADJ. IMF	ADJ. BF	ADJ. REA	FRAME	ADG	FEED CONV	RFI
Value	66	724	1177	3.69	0.24	14.75	5-	3.42	5.81	-0.94
Ratio	87	107	98	95	114	105	-	101	110	-



4

BRIDLE BIT MR M487

Hetero Black || Homo Polled 3/4 SM 1/4 AN

2/19/2024 M487 ASA# 4353352

BRIDLE BIT RESOURCE G9117 J BAR J NIGHTRIDE 225Z
BRIDLE BIT RECHARGE K256 **BRIDLE BIT MISS E784**
 BRIDLE BIT MISS G948 BRIDLE BIT MISS X058

	CE	BW	WW	YW	ADG	MCE	MILK	MWW
EPD	16.2	-2.0	77.9	117.4	0.25	9.8	28.2	67.1
Rank	15	20	50	55	65	15	15	30
	STAY	DOC	CW	YG	MARB	REA	API	TI
EPD	17.0	17.8	41.3	-0.19	0.52	0.64	154.6	88.7
Rank	30	4	35	55	35	55	20	30

	BW	ADJ. WW	ADJ. YW	ADJ. IMF	ADJ. BF	ADJ. REA	FRAME	ADG	FEED CONV	RFI
Value	82	711	1169	3.98	0.27	14.14	6-	3.38	5.69	-2.30
Ratio	99	105	98	103	129	101	-	100	112	-





BRIDLE BIT MR M427 || Sells as Lot 5.

5

BRIDLE BIT MR M427

Homo Black || Homo Polled 3/4 SM 1/4 AN
 2/7/2024 M427 ASA# 4353292

REDHILL 672X X004 231A

COLORADO BRIDLE BIT E752

CLRS HOMELAND 327H

BRIDLE BIT MISS J138

CLRS ALWAYS XCELLENT

BRIDLE BIT MISS G922

	CE	BW	WW	YW	ADG	MCE	MILK	MWW
EPD	12.2	-0.5	83.5	129.3	0.29	7.2	29.6	71.3
Rank	60	45	30	35	40	50	10	15

	STAY	DOC	CW	YG	MARB	REA	API	TI
EPD	21.2	13.4	43.3	-0.28	0.89	0.88	178.3	99.5
Rank	3	40	30	30	4	20	3	5

	BW	ADJ. WW	ADJ. YW	ADJ. IMF	ADJ. BF	ADJ. REA	FRAME	ADG	FEED CONV	RFI
Value	84	745	1354	5.55	0.19	14.65	6	4.09	5.37	-0.55
Ratio	105	111	113	143	90	104	-	121	117	-





BRIDLE BIT MR M431 || Sells as Lot 6.



CLRS HOMELAND 327H || Sire of Lots 5-12.

6 **BRIDLE BIT MR M431**
 Homo Black || Homo Polled 5/8 SM 3/8 AN
 2/8/2024 M431 ASA# 4353296

REDHILL 672X X004 231A BRIDLE BIT ECLIPSE E744
CLRS HOMELAND 327H **BRIDLE BIT MISS J159**
 CLRS ALWAYS XCELLENT BRIDLE BIT MISS F812

	CE	BW	WW	YW	ADG	MCE	MILK	MWW
EPD	19.8	-4.0	78.5	131.4	0.33	11.6	27.1	66.2
Rank	2	5	45	30	20	3	25	35

	STAY	DOC	CW	YG	MARB	REA	API	TI
EPD	21.7	11.1	44.9	-0.10	0.92	0.63	196.0	101.9
Rank	2	70	25	80	3	55	1	3

	BW	ADJ. WW	ADJ. YW	ADJ. IMF	ADJ. BF	ADJ. REA	FRAME	ADG	FEED CONV	RFI
Value	61	693	1323	6.05	0.24	14.7	6-	3.12	7.17	0.49
Ratio	77	103	111	156	114	105	-	93	89	-



CLRS HOMELAND 327H

Homo Black || Homo Polled 5/8 SM 3/8 AN
 2/18/2020 CLRS 327H ASA# 3709222

SIRE: REDHILL 672X X004 231A
 DAM: CLRS ALWAYS XCELLENT
 MGS: MCM TOP GRADE 018X

	CE	BW	WW	YW	MCE	MILK	MWW	STAY
	10.1	0.6	89.2	142.8	7.6	25.2	69.7	22.8
	85	65	15	15	40	40	20	1
	DOC	CW	YG	MARB	BF	REA	API	TI
	9.4	41.2	-0.44	0.64	-0.07	1.24	167.6	95.9
	85	35	2	20	10	1	10	10

The Homeland sons are creating quite the buzz in the industry. The bulls combine exceptional growth and phenotype to the highest degree. If you are looking for added pay weight while keeping mature frame size in check the Homeland sons will make you happy.



BRIDLE BIT MR M429 || Sells as Lot 7.

BRIDLE BIT MR M429 || Sells as Lot 7.

BRIDLE BIT MR M443 || Sells as Lot 8.

7 **BRIDLE BIT MR M429**
 Homo Black || Homo Polled 5/8 SM 3/8 AN
 2/8/2024 M429 ASA# 4353294

REDHILL 672X X004 231A COLORADO BRIDLE BIT E752
CLRS HOMELAND 327H BRIDLE BIT MISS H042
 CLRS ALWAYS XCELLENT BRIDLE BIT MISS C553

	CE	BW	WW	YW	ADG	MCE	MILK	MWW
EPD	16.6	-2.5	73.5	117.0	0.27	9.9	28.3	65.1
Rank	15	15	65	55	50	15	15	40
	STAY	DOC	CW	YG	MARB	REA	API	TI
EPD	22.3	9.0	28.4	-0.33	0.64	0.92	173.1	90.6
Rank	2	90	70	15	20	15	5	20

	BW	ADJ. WW	ADJ. YW	ADJ. IMF	ADJ. BF	ADJ. REA	FRAME	ADG	FEED CONV	RFI
Value	76	673	1271	4.75	0.21	15.2	6-	3.60	6.93	2.79
Ratio	94	100	106	123	100	108	-	107	93	-

8 **BRIDLE BIT MR M443**
 Homo Black || Homo Polled 3/4 SM 1/4 AN
 2/10/2024 M443 ASA# 4353308

REDHILL 672X X004 231A HOOK'S ENCORE 65E
CLRS HOMELAND 327H BRIDLE BIT MISS G999
 CLRS ALWAYS XCELLENT BRIDLE BIT MISS B452

	CE	BW	WW	YW	ADG	MCE	MILK	MWW
EPD	8.9	1.1	86.1	143.6	0.36	5.9	29.3	72.2
Rank	90	70	20	15	10	70	10	15
	STAY	DOC	CW	YG	MARB	REA	API	TI
EPD	19.2	10.1	37.2	-0.42	0.59	1.25	154.8	92.6
Rank	10	80	45	3	25	1	20	15

	BW	ADJ. WW	ADJ. YW	ADJ. IMF	ADJ. BF	ADJ. REA	FRAME	ADG	FEED CONV	RFI
Value	102	729	1404	4.36	0.27	17.05	6-	4.40	5.50	1.59
Ratio	125	108	117	113	129	122	-	130	115	-





9

FOCR MR M424

Homo Black || Homo Polled 5/8 SM 3/8 AN
1/19/2024 M424 ASA# 4343909

REDHILL 672X X004 231A HOOK'S BEACON 56B
CLRS HOMELAND 327H FOCR MISS E702
CLRS ALWAYS XCELLENT FOCR MISS C505 OF 616

	CE	BW	WW	YW	ADG	MCE	MILK	MWW		
EPD	7.3	2.8	90.0	142.2	0.33	4.9	28.9	73.8		
Rank	99	95	15	15	20	85	15	10		
	STAY	DOC	CW	YG	MARB	REA	API	TI		
EPD	20.1	9.6	45.0	-0.19	0.46	0.85	143.0	87.7		
Rank	10	85	25	55	40	20	40	30		
	BW	ADJ. WW	ADJ. YW	ADJ. IMF	ADJ. BF	ADJ. REA	FRAME	ADG	FEED CONV	RFI
Value	100	733	1358	3.71	0.19	14.33	6+	4.08	5.43	-1.39
Ratio	125	110	114	106	90	103	-	121	116	-

FOCR MR M424 || Sells as Lot 9.



10

BRIDLE BIT MR M453

Homo Black || Homo Polled 5/8 SM 3/8 AN
2/13/2024 M453 ASA# 4353318

REDHILL 672X X004 231A BRIDLE BIT RESOURCE G9117
CLRS HOMELAND 327H BRIDLE BTI MISS K280
CLRS ALWAYS XCELLENT BRIDLE BIT MISS D601

	CE	BW	WW	YW	ADG	MCE	MILK	MWW		
EPD	14.4	-4.5	67.6	98.1	0.19	9.8	25.7	59.4		
Rank	30	3	85	90	95	15	35	65		
	STAY	DOC	CW	YG	MARB	REA	API	TI		
EPD	21.4	8.3	23.7	-0.50	0.36	1.24	153.6	82.3		
Rank	3	95	85	1	55	1	25	50		
	BW	ADJ. WW	ADJ. YW	ADJ. IMF	ADJ. BF	ADJ. REA	FRAME	ADG	FEED CONV	RFI
Value	74	689	1138	3.56	0.24	16.18	5-	3.16	6.70	0.66
Ratio	97	102	95	92	114	115	-	94	96	-



11

BRIDLE BIT MR M4100

Homo Black || Homo Polled 5/8 SM 3/8 AN
2/23/2024 M4100 ASA# 4353369

REDHILL 672X X004 231A BRIDLE BIT CALVARY C503
CLRS HOMELAND 327H BRIDLE BIT MISS G9119
CLRS ALWAYS XCELLENT BRIDLE BIT MISS C513

	CE	BW	WW	YW	ADG	MCE	MILK	MWW		
EPD	10.1	2.2	93.7	143.0	0.31	7.5	24.5	71.4		
Rank	85	90	10	15	30	45	45	15		
	STAY	DOC	CW	YG	MARB	REA	API	TI		
EPD	17.7	15.1	36.8	-0.33	0.42	0.90	142.2	90.1		
Rank	20	20	45	15	45	15	40	25		
	BW	ADJ. WW	ADJ. YW	ADJ. IMF	ADJ. BF	ADJ. REA	FRAME	ADG	FEED CONV	RFI
Value	87	716	1178	3.78	0.17	15.57	5+	3.90	5.29	-0.07
Ratio	107	106	98	98	81	111	-	116	118	-



12

BRIDLE BIT MR M449

Homo Black || Homo Polled 5/8 SM 11/32 AN 1/32 AR
2/12/2024 M449 ASA# 4353314

REDHILL 672X X004 231A HOOK'S YELLOWSTONE 97Y
CLRS HOMELAND 327H BRIDLE BIT MISS C552
CLRS ALWAYS XCELLENT BRIDLE BIT MISS X023

	CE	BW	WW	YW	ADG	MCE	MILK	MWW		
EPD	9.8	1.9	95.1	152.5	0.36	6.3	26.2	73.7		
Rank	85	85	10	10	10	65	30	10		
	STAY	DOC	CW	YG	MARB	REA	API	TI		
EPD	21.9	10.1	61.4	-0.42	0.29	1.23	146.2	89.2		
Rank	2	80	4	3	70	1	35	25		
	BW	ADJ. WW	ADJ. YW	ADJ. IMF	ADJ. BF	ADJ. REA	FRAME	ADG	FEED CONV	RFI
Value	100	765	1359	3.56	0.17	15.4	7+	4.18	4.88	-2.55
Ratio	121	113	114	92	81	110	-	124	125	-





BRIDLE BIT MR M460 || Sells as Lot 13.



BRIDLE BIT MISS G948 || Dam of Lot 13.

13

BRIDLE BIT MR M460

Homo Black || Homo Polled PB SM

2/13/2024 M460 ASA# 4353325

HOOK'S ENCORE 65E COLORADO BRIDLE BIT E752
BRIDLE BIT RESOURCE G9117 **BRIDLE BIT MISS G948**
 BRIDLE BIT MISS B452 BRIDLE BIT MISS X002

	CE	BW	WW	YW	ADG	MCE	MILK	MWW
EPD	19.2	-5.2	66.6	104.7	0.24	12.1	31.0	64.2
Rank	1	1	95	80	55	1	10	45

	STAY	DOC	CW	YG	MARB	REA	API	TI
EPD	17.6	15.6	24.2	-0.34	0.75	0.78	186.7	97.1
Rank	30	15	70	65	2	65	2	10

	BW	ADJ. WW	ADJ. YW	ADJ. IMF	ADJ. BF	ADJ. REA	FRAME	ADG	FEED CONV	RFI
Value	66	645	1130	4.66	0.17	13.28	6-	3.70	5.58	-0.25
Ratio	ET	ET	ET	129	94	100	-	110	114	-



BRIDLE BIT RECHARGE K256 || Full brother of Lot 13.

BRIDLE BIT RESOURCE G9117

Homo Black || Homo Polled PB SM
 3/12/2019 G9117 ASA# 3561070

SIRE: **HOOK'S ENCORE 65E**
 DAM: **BRIDLE BIT MISS B452**
 MGS: **SAND RANCH HAND**

CE	BW	WW	YW	MCE	MILK	MWW	STAY
16.5	-1.2	86.4	140.7	11.3	33.0	76.1	18.4
10	15	25	15	2	4	5	20
DOC	CW	YG	MARB	BF	REA	API	TI
15.2	47.0	-0.39	0.35	-0.05	1.32	164.8	94.9
15	10	45	25	90	2	15	15

High accuracy herdsires who are bringing premiums all over the country can be found in the Resources sire group. Many of them will be heifer safe purebred bulls and study with as much dimension and mass as any of bulls in our sale. They combine genetic merit with breath taking phenotype and will no doubt be crowd favorites on sale day.



BRIDLE BIT RESOURCE G9117 || Sire of Lots 13-20.



BRIDLE BIT MR M419 || Sells as Lot 14.

14 BRIDLE BIT MR M419

Homo Black || Homo Polled 3/4 SM 7/32 AN 1/32 AR
 2/6/2024 M419 ASA# 4353284

SIRE: **HOOK'S ENCORE 65E** HOOK'S EAGLE 6E
BRIDLE BIT RESOURCE G9117 **BRIDLE BIT MISS H006**
 BRIDLE BIT MISS B452 BRIDLE BIT MISS E797

	CE	BW	WW	YW	ADG	MCE	MILK	MWW
EPD	10.6	0.8	104.1	174.0	0.44	4.6	28.9	80.8
Rank	80	65	1	1	1	85	15	1
	STAY	DOC	CW	YG	MARB	REA	API	TI
EPD	15.6	17.3	72.0	-0.36	0.83	1.46	171.0	110.1
Rank	45	5	1	10	10	1	10	1

	BW	ADJ. WW	ADJ. YW	ADJ. IMF	ADJ. BF	ADJ. REA	FRAME	ADG	FEED CONV	RFI
Value	93	770	1405	4.65	0.28	14.74	6+	3.91	5.67	-0.82
Ratio	114	114	117	120	133	105	-	116	112	-



BRIDLE BIT MISS H006 || Dam of Lot 14.

15 BRIDLE BIT MR M415

Homo Black || Homo Polled PB SM
 2/4/2024 M415 ASA# 4353280

SIRE: **HOOK'S ENCORE 65E** CCR COWBOY CUT 5048Z
BRIDLE BIT RESOURCE G9117 **BRIDLE BIT MISS H083**
 BRIDLE BIT MISS B452 BRIDLE BIT MISS Z215

	CE	BW	WW	YW	ADG	MCE	MILK	MWW
EPD	14.2	0.3	86.3	128.1	0.26	8.7	28.0	71.1
Rank	20	35	25	30	45	15	20	15
	STAY	DOC	CW	YG	MARB	REA	API	TI
EPD	16.1	17.2	25.6	-0.45	0.16	0.70	142.4	87.2
Rank	45	4	65	20	55	80	40	30

	BW	ADJ. WW	ADJ. YW	ADJ. IMF	ADJ. BF	ADJ. REA	FRAME	ADG	FEED CONV	RFI
Value	81	685	1066	3.34	0.2	13.56	5	2.87	6.58	-1.85
Ratio	100	102	89	86	95	97	-	85	98	-



16 BRIDLE BIT MR M434

Hetero Black || Homo Polled 3/4 SM 3/16 AN 1/16 AR
2/9/2024 M434 ASA# 4353299

HOOK'S ENCORE 65E HOOK'S BLACK HAWK 50B
BRIDLE BIT RESOURCE G9117 BRIDLE BIT MISS D676
BRIDLE BIT MISS B452 BRIDLE BIT MISS W918

	CE	BW	WW	YW	ADG	MCE	MILK	MWW		
EPD	12.6	0.6	89.2	140.7	0.32	8.7	27.4	72.1		
Rank	55	65	15	15	25	25	20	15		
	STAY	DOC	CW	YG	MARB	REA	API	TI		
EPD	19.7	15.7	42.2	-0.31	0.45	1.23	152.7	90.8		
Rank	10	15	30	20	45	1	25	20		
	BW	ADJ. WW	ADJ. YW	ADJ. IMF	ADJ. BF	ADJ. REA	FRAME	ADG	FEED CONV	RFI
Value	96	711	1317	4.05	0.2	16.89	7-	3.59	6.95	2.44
Ratio	116	105	110	105	95	120	-	106	93	-



BRIDLE BIT MR M434 || Sells as Lot 16.

17 BRIDLE BIT MR M439

Homo Black || Homo Polled 3/4 SM 1/4 AN
2/9/2024 M439 ASA# 4353304

HOOK'S ENCORE 65E GIBBS 5063C HOME RUN
BRIDLE BIT RESOURCE G9117 BRIDLE BIT MISS G900
BRIDLE BIT MISS B452 BRIDLE BIT MISS A316

	CE	BW	WW	YW	ADG	MCE	MILK	MWW		
EPD	17.3	-2.6	73.3	123.0	0.31	10.6	27.6	64.2		
Rank	10	15	65	45	30	10	20	45		
	STAY	DOC	CW	YG	MARB	REA	API	TI		
EPD	20.2	14.7	35.7	-0.19	0.31	0.76	152.0	82.0		
Rank	10	25	50	55	65	35	25	50		
	BW	ADJ. WW	ADJ. YW	ADJ. IMF	ADJ. BF	ADJ. REA	FRAME	ADG	FEED CONV	RFI
Value	80	601	1138	3.05	0.19	12.66	6-	2.91	7.89	1.73
Ratio	97	89	95	79	90	90	-	86	78	-



18 BRIDLE BIT MR M407

Homo Black || Homo Polled 3/4 SM 1/4 AN
2/1/2024 M407 ASA# 4353272

HOOK'S ENCORE 65E BRIDLE BIT ECLIPSE E744
BRIDLE BIT RESOURCE G9117 BRIDLE BIT MISS J113
BRIDLE BIT MISS B452 BRIDLE BIT MISS E778

	CE	BW	WW	YW	ADG	MCE	MILK	MWW		
EPD	18.9	-3.1	82.8	130.3	0.30	11.1	30.7	72.1		
Rank	3	10	30	30	35	4	10	15		
	STAY	DOC	CW	YG	MARB	REA	API	TI		
EPD	16.4	15.8	35.6	-0.38	0.54	1.01	164.0	95.2		
Rank	35	15	50	10	30	10	10	10		
	BW	ADJ. WW	ADJ. YW	ADJ. IMF	ADJ. BF	ADJ. REA	FRAME	ADG	FEED CONV	RFI
Value	70	710	1209	3.84	0.16	15.49	6	2.79	8.29	1.36
Ratio	88	105	101	99	76	110	-	83	72	-



19 BRIDLE BIT MR M4113

Hetero Black || Homo Polled 3/4 SM 1/4 AN
2/7/2024 M4113 ASA# 4353382

HOOK'S ENCORE 65E J BAR J NIGHTRIDE 225Z
BRIDLE BIT RESOURCE G9117 BRIDLE BIT MISS F889
BRIDLE BIT MISS B452 BRIDLE BIT MISS A316

	CE	BW	WW	YW	ADG	MCE	MILK	MWW		
EPD	15.1	-1.7	79.4	135.3	0.35	9.4	25.3	64.9		
Rank	25	25	45	25	10	15	35	40		
	STAY	DOC	CW	YG	MARB	REA	API	TI		
EPD	17.3	15.9	37.5	-0.36	0.42	1.24	152.0	88.0		
Rank	25	15	45	10	45	1	25	30		
	BW	ADJ. WW	ADJ. YW	ADJ. IMF	ADJ. BF	ADJ. REA	FRAME	ADG	FEED CONV	RFI
Value	90	631	1221	3.49	0.26	15.55	5+	3.11	7.05	0.51
Ratio	109	94	102	90	124	111	-	92	91	-



BRIDLE BIT MR M4113 || Sells as Lot 19.



BRIDLE BIT MR M401

Homo Black || Homo Polled 3/4 SM 1/4 AN
1/29/2024 M401 ASA# 4353266

HOOK'S ENCORE 65E
BRIDLE BIT RESOURCE G9117
BRIDLE BIT MISS B452

BRIDLE BIT REMBRANDT D630
BRIDLE BIT MISS H035
BRIDLE BIT MISS F860

	CE	BW	WW	YW	ADG	MCE	MILK	MWW		
EPD	15.9	-2.3	75.8	119.9	0.28	9.3	25.9	63.8		
Rank	20	20	55	50	45	20	35	45		
	STAY	DOC	CW	YG	MARB	REA	API	TI		
EPD	20.2	11.8	49.0	-0.18	0.37	0.80	153.3	84.1		
Rank	10	60	20	55	55	25	25	45		
	BW	ADJ. WW	ADJ. YW	ADJ. IMF	ADJ. BF	ADJ. REA	FRAME	ADG	FEED CONV	RFI
Value	73	669	1179	3.33	0.26	13.25	6-	2.98	7.00	-1.00
Ratio	89	99	98	86	124	95	-	88	92	-



EXCITING NEWS FROM BRIDLE BIT AND KONKEL FEEDLOT

We have some exciting news to share, which we hope will allow us to further be involved with our customers and continue to build long-term relationships with bull buyers!

Konkel Feedlot is a 3,000 head capacity feedlot, ten miles southwest of Walsh, Colorado. Originally built in 1975, Bud Konkel initially intended the yard to house horses. Over time the Konkel family converted the feedlot into a backgrounding and finishing yard. In 2006 Konkel Feedlot was passed down and managed by the next generation, Gene & Linda Noe (Son-in-Law & Daughter to Bud). The Konkel's and Noe's both had a reputation for always doing an outstanding job feeding cattle. Konkel Feedlot often fed and/or purchased many local cow-calf producer's calves, making them a staple in the community many respected.

Following Gene's death in 2021, the feedlot has mostly sat empty except when the Noe's cows and calves are there in the fall and winter months. Working with daughters of Gene and Linda, Warnetta Martin and Tressa Turner, we have made the decision to lease Konkel Feedlot starting in the Fall of 2025.

Our goal with Konkel Feedlot is to ultimately feed our customers' calves, whether that be custom feeding or a partnership of some kind. We feel our genetics and quality of breeding stock gives our customers an advantage when selling their calves through an online auction such as Superior Livestock and even at the local sale barn. We are confident that to truly take advantage of our genetics it makes sense for many of our customers to retain some kind of ownership in their calves and we are excited to start offering that service and working more closely with our customers! Along with feeding customers calves, we are also looking into doing some AI projects for customers' replacement heifers as well. Please feel free to contact Chad Cook with any questions or interest you may have about placing cattle.

To help manage the feedlot we hired Kameron Wray, who is a young, enthusiastic, and eager to learn young man who will help with day-to-day activities as well as look after the Noe's cowherd. We are excited to start working alongside Kameron this summer as he graduates high school in May! We would like to extend a special thank you to Linda and the girls for allowing us this opportunity!





BRIDLE BIT MR M480 || Sells as Lot 21.



BRIDLE BIT MISS H024 || Dam of Lot 21.



BRIDLE BIT PRELUDE L372 || Maternal sister of Lot 21.

21

BRIDLE BIT MR M480

Homo Black || Homo Polled 3/4 SM 1/4 AN
 2/18/2024 M480 ASA# 4353345

GIBBS 9114G ESSENTIAL COLORADO BRIDLE BIT E752
JC MR PONTIAC D114K **BRIDLE BIT MISS H024**
 FSCR D114 LUCILLE B089XP BRIDLE BIT MISS D643

	CE	BW	WW	YW	ADG	MCE	MILK	MWW
EPD	13.9	0.3	88.0	132.8	0.28	7.9	27.6	71.6
Rank	40	60	20	25	45	35	20	15

	STAY	DOC	CW	YG	MARB	REA	API	TI
EPD	21.7	15.4	27.5	-0.21	0.88	0.66	180.3	100.5
Rank	2	20	75	50	4	50	3	4

	BW	ADJ. WW	ADJ. YW	ADJ. IMF	ADJ. BF	ADJ. REA	FRAME	ADG	FEED CONV	RFI
Value	97	729	1317	4.97	0.26	14.3	6+	3.34	7.43	2.46
Ratio	119	108	110	128	124	102	-	99	85	-



JC MR PONTIAC D114K

Homo Black || Homo Polled 3/4 SM 1/4 AN
 2/24/2022 JCD114K ASA# 4029546

SIRE: GIBBS 9114G ESSENTIAL
 DAM: FSCR D114 LUCILLE B089XP
 MGS: GIBBS 4475B PIRATE

CE	BW	WW	YW	MCE	MILK	MWW	STAY
13.1	-1.4	90.5	141.0	7.8	23.9	69.1	20.8
50	30	15	15	40	50	20	4
DOC	CW	YG	MARB	BF	REA	API	TI
14.6	47.4	-0.23	0.55	-0.03	1.00	164.6	95.8
25	20	40	30	65	10	10	10

The Pontiac cattle are wonderful in terms of type being dense in their build, wonderful structured, and great docility. Genetically the sons are balanced across the board and offer a big spread from birth to yearling. Look for these ultra complete sons to add value to multiple facets of your operation.



JC MR PONTIAC D114K || Sire of Lots 21-32.



BRIDLE BIT MR M411 || Sells as Lot 22.

22 BRIDLE BIT MR M411

Homo Black || Homo Polled 5/8 SM 11/32 AN 1/32 AR
 2/2/2024 M411 ASA# 4353276

GIBBS 9114G ESSENTIAL HOOK'S GALILEO 210G
JC MR PONTIAC D114K **BRIDLE BIT MISS J134**
 FSCR D114 LUCILLE B089XP BRIDLE BIT MISS E727

	CE	BW	WW	YW	ADG	MCE	MILK	MWW
EPD	16.1	-2.9	87.2	131.9	0.28	9.7	27.6	71.2
Rank	15	15	20	30	45	15	20	15
	STAY	DOC	CW	YG	MARB	REA	API	TI
EPD	25.9	16.0	48.5	-0.19	0.67	0.78	185.8	99.0
Rank	1	15	20	55	15	30	2	5

	BW	ADJ. WW	ADJ. YW	ADJ. IMF	ADJ. BF	ADJ. REA	FRAME	ADG	FEED CONV	RFI
Value	78	679	1264	4.24	0.16	13.01	5+	3.17	6.83	0.05
Ratio	98	101	106	110	76	93	-	94	94	-



FOCR MR M445 || Sells as Lot 23.

23 FOCR MR M445

Homo Black || Homo Polled 5/8 SM 3/8 AN
 2/8/2024 M445 ASA# 4343928

GIBBS 9114G ESSENTIAL G A R SURE FIRE
JC MR PONTIAC D114K **EGL NALA 105F**
 FSCR D114 LUCILLE B089XP TJ 22X

	CE	BW	WW	YW	ADG	MCE	MILK	MWW
EPD	14.5	-1.7	85.7	130.6	0.28	6.8	28.6	71.2
Rank	30	25	25	30	45	55	15	15
	STAY	DOC	CW	YG	MARB	REA	API	TI
EPD	22.2	15.1	36.2	-0.20	0.65	0.73	172.5	96.1
Rank	2	20	50	50	20	40	5	10

	BW	ADJ. WW	ADJ. YW	ADJ. IMF	ADJ. BF	ADJ. REA	FRAME	ADG	FEED CONV	RFI
Value	76	661	1245	3.85	0.18	13.07	6-	3.61	7.10	3.79
Ratio	ET	ET	ET	99	86	106	-	107	90	-





EGL NALA 105F || Dam of Lots 23-25.

24 **FOCR MR M440**
 Homo Black || Homo Polled 5/8 SM 3/8 AN
 2/5/2024 M440 ASA# 4343923

GIBBS 9114G ESSENTIAL G A R SURE FIRE
JC MR PONTIAC D114K **EGL NALA 105F**
 FSCR D114 LUCILLE B089XP TJ 22X

	CE	BW	WW	YW	ADG	MCE	MILK	MWW
EPD	13.4	-1.9	85.9	130.0	0.28	6.5	28.6	71.3
Rank	45	20	25	30	45	60	15	15
	STAY	DOC	CW	YG	MARB	REA	API	TI
EPD	23.1	18.1	41.6	-0.13	0.71	0.65	175.9	97.3
Rank	1	4	35	70	15	55	4	10

	BW	ADJ. WW	ADJ. YW	ADJ. IMF	ADJ. BF	ADJ. REA	FRAME	ADG	FEED CONV	RFI
Value	80	646	1168	3.75	0.21	13.47	5+	3.03	8.67	4.76
Ratio	100	97	98	107	100	96	-	90	66	-



25 **FOCR MR M436**
 Homo Black || Homo Polled 5/8 SM 3/8 AN
 2/4/2024 M436 ASA# 4343920

GIBBS 9114G ESSENTIAL G A R SURE FIRE
JC MR PONTIAC D114K **EGL NALA 105F**
 FSCR D114 LUCILLE B089XP TJ 22X

	CE	BW	WW	YW	ADG	MCE	MILK	MWW
EPD	12.6	-0.7	89.3	129.9	0.25	5.4	28.6	73.0
Rank	55	40	15	30	65	75	15	10
	STAY	DOC	CW	YG	MARB	REA	API	TI
EPD	23.2	17.2	37.9	-0.28	0.55	0.86	165.4	94.3
Rank	1	10	45	30	30	20	10	15

	BW	ADJ. WW	ADJ. YW	ADJ. IMF	ADJ. BF	ADJ. REA	FRAME	ADG	FEED CONV	RFI
Value	79	710	1254	4.04	0.26	13.35	7-	3.07	6.81	-1.33
Ratio	ET	ET	ET	104	124	108	-	91	95	-





MORE *with less*

SELECTING FOR EFFICIENCY AND REDUCED COST

The stakeholders of the US beef business have selected for output traits over the past 50+ years and have been extremely successful in this effort. The quantity of beef produced, both per animal and per acre has grown to a level unmatched in the world as a result of genetic and management improvements. However, as we reach output trait thresholds that are increasingly difficult to top without unwanted consequences, we are compelled to more intensively consider opportunities that focus on the cost or input side of the profit equation. Research over 20 years ago demonstrated that a 10% improvement in gain results in an 18% improvement in profit, whereas a 10% improvement in efficiency resulted in a 43% improvement in profit.

If you're in the cattle business today, you understand that the cost of feed and pasture is probably not going to get "cheap" again, and certainly recognize the impact these input costs have on your bottom-line. Fortunately, technology for measuring individual animal intake and efficiency has advanced and is considerably more affordable and simpler to use than just a few years ago.

Improving feed efficiency, much like other traits, is relatively straightforward. Research indicates feed efficiency is a moderately heritable trait, and thus, selecting genetics that are more efficient will pass on to the next generation. The key is finding seedstock partners, like Bridle Bit and the Cook Family, that are embracing this opportunity to identify efficient genetics, and ultimately have those genetics generate value for their customers and the industry.

Selecting for efficiency doesn't mean you have to give up growth, carcass merit, or maternal values. The goal is to find the cattle that continue to excel in performance, but simply are able to do so with a lower feed or forage requirement.

Feed Conversion Ratio (FCR)

This is a very easy to understand efficiency measurement that tells you how much feed (lbs of dry matter) were required for a pound of gain. Cattle that excel in FCR tend to also excel for growth traits, and can lower your cost of gain significantly. As a note, selection for cattle solely based on FCR, can indirectly increase growth, but also mature cow size.

Residual Feed Intake (RFI)

RFI is a bit trickier to understand, but is very useful as an efficiency measurement. RFI is the difference between an animal's actual intake and its expected intake based on the animal's gain, body weight and composition. Essentially, RFI evaluates how much feed should be required for an animal of a given size and level of performance. Cattle that eat "less" than expected will have a negative RFI, which is desirable.

RFI is more closely linked with biological efficiency, and is independent of growth and mature size. For ranches that select low RFI genetics, resulting replacement females will require less feed to maintain, and long term can potentially increase stocking rate. Ranches that also retain ownership of calves will likely want to couple this selection with growth and performance traits to ensure feedyard performance meets expectations.

“ With today's input costs, identifying cattle that can do more with less is critical. The commitment the Bridle Bit team has made to focus their program on efficient, economically relevant genetics, without a doubt, positions them to help their customers remain profitable in the years to come. ”

- Ted Cunningham

C-LOCK Inc.
Measure and Control Feed Intake and Emissions

26 BRIDLE BIT MR M493

Homo Black || Homo Polled PB SM
2/20/2024 M493 ASA# 4353358

GIBBS 9114G ESSENTIAL KBHR CIMARRON F151
JC MR PONTIAC D114K BRIDLE BIT MISS J129
FSCR D114 LUCILLE B089XP BRIDLE BIT MISS B452

	CE	BW	WW	YW	ADG	MCE	MILK	MWW		
EPD	10.3	0.3	86.0	139.7	0.34	6.4	23.7	66.7		
Rank	70	35	25	15	10	45	45	35		
	STAY	DOC	CW	YG	MARB	REA	API	TI		
EPD	18.6	11.1	69.6	-0.25	0.46	1.12	159.8	93.2		
Rank	20	60	1	90	15	10	15	15		
	BW	ADJ. WW	ADJ. YW	ADJ. IMF	ADJ. BF	ADJ. REA	FRAME	ADG	FEED CONV	RFI
Value	97	787	1158	3.28	0.22	12.75	6+	-	-	-
Ratio			91	122	96	-	-	-	-	-



BRIDLE BIT MR M493 || Sells as Lot 26.

27 BRIDLE BIT MR M486

Homo Black || Homo Polled PB SM
2/19/2024 M486 ASA# 4353351

GIBBS 9114G ESSENTIAL HOOK'S ENCORE 65E
JC MR PONTIAC D114K BRIDLE BIT MISS G996
FSCR D114 LUCILLE B089XP BRIDLE BIT MISS B452

	CE	BW	WW	YW	ADG	MCE	MILK	MWW		
EPD	13.5	-2.0	79.1	117.9	0.24	8.1	29.6	69.1		
Rank	25	10	50	50	55	20	15	25		
	STAY	DOC	CW	YG	MARB	REA	API	TI		
EPD	21.7	17.2	27.4	-0.26	0.44	0.74	168.3	91.7		
Rank	3	4	55	90	15	75	10	20		
	BW	ADJ. WW	ADJ. YW	ADJ. IMF	ADJ. BF	ADJ. REA	FRAME	ADG	FEED CONV	RFI
Value	82	692	1160	3.38	0.21	13.9	5+	3.31	5.76	-1.91
Ratio	ET	ET	ET	93	117	104	-	98	111	-



BRIDLE BIT MR M486 || Sells as Lot 27.

28 BRIDLE BIT MR M452

Homo Black || Homo Polled PB SM
2/12/2024 M452 ASA# 4353317

GIBBS 9114G ESSENTIAL HOOK'S ENCORE 65E
JC MR PONTIAC D114K BRIDLE BIT MISS G996
FSCR D114 LUCILLE B089XP BRIDLE BIT MISS B452

	CE	BW	WW	YW	ADG	MCE	MILK	MWW		
EPD	14.2	-4.2	83.4	126.5	0.27	8.6	29.6	71.2		
Rank	20	1	35	35	35	15	15	15		
	STAY	DOC	CW	YG	MARB	REA	API	TI		
EPD	18.9	18.4	38.1	-0.37	0.54	1.19	175.8	100.2		
Rank	20	2	25	55	10	5	5	5		
	BW	ADJ. WW	ADJ. YW	ADJ. IMF	ADJ. BF	ADJ. REA	FRAME	ADG	FEED CONV	RFI
Value	57	573	1061	3.96	0.2	12.67	5-	3.35	5.63	-1.47
Ratio	ET	ET	ET	109	111	95	-	99	113	-



BRIDLE BIT MR M452 || Sells as Lot 28.



BRIDLE BIT MISS G996 || Dam of Lots 27-32.

29 **BRIDLE BIT MR M470**
 Homo Black || Homo Polled PB SM
 2/15/2024 M470 ASA# 4353335

GIBBS 9114G ESSENTIAL HOOK'S ENCORE 65E
JC MR PONTIAC D114K BRIDLE BIT MISS G996
 FSCR D114 LUCILLE B089XP BRIDLE BIT MISS B452

	CE	BW	WW	YW	ADG	MCE	MILK	MWW
EPD	11.9	-3.3	76.8	119.2	0.26	7.3	29.6	67.9
Rank	45	3	60	45	45	30	15	30
	STAY	DOC	CW	YG	MARB	REA	API	TI
EPD	21.7	15.5	30.2	-0.41	0.30	1.11	161.6	89.1
Rank	3	15	45	35	35	10	15	25

	BW	ADJ. WW	ADJ. YW	ADJ. IMF	ADJ. BF	ADJ. REA	FRAME	ADG	FEED CONV	RFI
Value	69	599	1003	3.47	0.17	14.05	5-	2.66	6.67	-2.24
Ratio	ET	ET	ET	96	94	106	-	79	97	-



30 **BRIDLE BIT MR M491**
 Homo Black || Homo Polled PB SM
 2/19/2024 M491 ASA# 4353356

GIBBS 9114G ESSENTIAL HOOK'S ENCORE 65E
JC MR PONTIAC D114K BRIDLE BIT MISS G996
 FSCR D114 LUCILLE B089XP BRIDLE BIT MISS B452

	CE	BW	WW	YW	ADG	MCE	MILK	MWW
EPD	13.8	-3.0	81.3	127.8	0.29	8.6	29.6	70.2
Rank	25	3	40	30	25	15	15	20
	STAY	DOC	CW	YG	MARB	REA	API	TI
EPD	21.0	17.1	42.7	-0.30	0.59	1.01	179.3	98.5
Rank	5	4	15	80	10	20	3	10

	BW	ADJ. WW	ADJ. YW	ADJ. IMF	ADJ. BF	ADJ. REA	FRAME	ADG	FEED CONV	RFI
Value	74	522	1045	3.48	0.11	13.77	5+	3.43	5.44	-1.23
Ratio	ET	ET	ET	96	61	103	-	102	116	-



31 **BRIDLE BIT MR M472**
 Homo Black || Homo Polled PB SM
 2/16/2024 M472 ASA# 4353337

GIBBS 9114G ESSENTIAL HOOK'S ENCORE 65E
JC MR PONTIAC D114K BRIDLE BIT MISS G996
 FSCR D114 LUCILLE B089XP BRIDLE BIT MISS B452

	CE	BW	WW	YW	ADG	MCE	MILK	MWW
EPD	14.1	-2.7	77.9	124.8	0.29	8.5	29.6	68.5
Rank	20	4	55	35	25	15	15	25
	STAY	DOC	CW	YG	MARB	REA	API	TI
EPD	17.7	15.4	32.9	-0.38	0.41	1.02	162.7	92.4
Rank	30	15	40	50	20	20	15	20

	BW	ADJ. WW	ADJ. YW	ADJ. IMF	ADJ. BF	ADJ. REA	FRAME	ADG	FEED CONV	RFI
Value	75	567	1035	2.97	0.15	12.47	5+	3.47	5.52	-0.81
Ratio	ET	ET	ET	82	83	94	-	103	115	-



32 **BRIDLE BIT MR M473**
 Homo Black || Homo Polled PB SM
 2/16/2024 M473 ASA# 4353338

GIBBS 9114G ESSENTIAL HOOK'S ENCORE 65E
JC MR PONTIAC D114K BRIDLE BIT MISS G996
 FSCR D114 LUCILLE B089XP BRIDLE BIT MISS B452

	CE	BW	WW	YW	ADG	MCE	MILK	MWW
EPD	11.5	-1.3	80.6	121.7	0.26	7.1	29.6	69.8
Rank	50	15	45	45	45	30	15	20
	STAY	DOC	CW	YG	MARB	REA	API	TI
EPD	20.4	14.5	32.0	-0.35	0.41	0.98	161.6	91.2
Rank	10	20	40	65	20	25	15	20

	BW	ADJ. WW	ADJ. YW	ADJ. IMF	ADJ. BF	ADJ. REA	FRAME	ADG	FEED CONV	RFI
Value	74	658	1102	3.37	0.21	13.47	5-	2.94	7.58	1.43
Ratio	ET	ET	ET	93	117	101	-	87	83	-





BRIDLE BIT MR M413 || Sells as Lot 33.

33 **BRIDLE BIT MR M413**
 Homo Black || Homo Polled 3/4 SM 1/4 AN
 2/4/2024 M413 ASA# 4353278

BRIDLE BIT CALVARY C503 BRIDLE BIT RED ROCK G9124
 BRIDLE BIT ECLIPSE E744 BRIDLE BIT MISS J191
 BRIDLE BIT MISS A327 BRIDLE BIT MISS A382

	CE	BW	WW	YW	ADG	MCE	MILK	MWW
EPD	20.9	-4.0	82.5	134.6	0.33	10.5	25.7	66.9
Rank	1	5	30	25	20	10	35	30

	STAY	DOC	CW	YG	MARB	REA	API	TI
EPD	13.7	14.0	44.5	-0.04	0.92	0.44	182.3	103.8
Rank	65	30	25	90	3	85	3	2

	BW	ADJ. WW	ADJ. YW	ADJ. IMF	ADJ. BF	ADJ. REA	FRAME	ADG	FEED CONV	RFI
Value	74	688	1322	4.34	0.27	14.4	5+	3.39	6.86	1.18
Ratio	94	102	110	112	129	103	-	100	94	-



BRIDLE BIT ECLIPSE E744

Homo Black || Homo Polled 1/2 SM 1/2 AN
 2/4/2017 E744 ASA# 3271380

SIRE: BRIDLE BIT CALVARY C503

DAM: BRIDLE BIT MISS A327

MGS: BAR CK TEBOW 1006X

CE	BW	WW	YW	MCE	MILK	MWW	STAY
23.7	-6.6	78.2	124.9	12.5	28.1	67.1	17.7
1	1	45	40	1	20	30	20
DOC	CW	YG	MARB	BF	REA	API	TI
17.9	38.7	0.13	0.91	0.00	-0.05	195.1	103.5
4	40	99	4	90	99	1	2

The sons of Eclipse come light, many being suitable for heifers, and absolutely explode thereafter for growth. He is the highest proof SimAngus bulls in the database for feed intake and RFI. If you are wanting efficient cattle to build a herd around the Eclipse sons will make excellent choices.



BRIDLE BIT ECLIPSE E744 || Sire of Lots 33-37.



FOCR MR M413 || Sells as Lot 34.

34 FOCR MR M413

Hetero Black || Homo Polled 5/8 SM 3/8 AN
 1/13/2024 M413 ASA# 4343898

BRIDLE BIT CALVARY C503 WS ALL ABOARD B80
BRIDLE BIT ECLIPSE E744 **FOCR MISS G912**
 BRIDLE BIT MISS A327 BRIDLE BIT MISS E796

	CE	BW	WW	YW	ADG	MCE	MILK	MWW
EPD	18.5	-3.3	101.2	157.9	0.35	9.9	27.4	77.9
Rank	4	10	2	3	10	15	20	3
	STAY	DOC	CW	YG	MARB	REA	API	TI
EPD	11.6	17.3	66.1	-0.09	0.59	0.75	162.4	106.0
Rank	80	5	2	80	25	35	15	2

	BW	ADJ. WW	ADJ. YW	ADJ. IMF	ADJ. BF	ADJ. REA	FRAME	ADG	FEED CONV	RFI
Value	75	734	1365	3.4	0.25	13.92	5+	3.35	6.62	-1.45
Ratio	95	111	114	97	119	100	-	99	98	-



BRIDLE BIT MR M489 || Sells as Lot 35.

35 BRIDLE BIT MR M489

Homo Black || Homo Polled 3/4 SM 1/4 AN
 2/19/2024 M489 ASA# 4353354

BRIDLE BIT CALVARY C503 CLRS DIVIDEND 405D
BRIDLE BIT ECLIPSE E744 **BRIDLE BIT MISS G921**
 BRIDLE BIT MISS A327 BRIDLE BIT MISS C562

	CE	BW	WW	YW	ADG	MCE	MILK	MWW
EPD	18.8	-4.8	83.7	137.9	0.34	9.6	27.2	69.0
Rank	4	3	30	20	15	15	25	20
	STAY	DOC	CW	YG	MARB	REA	API	TI
EPD	14.3	16.5	35.6	-0.01	0.61	0.24	165.7	97.7
Rank	60	10	50	95	20	99	10	10

	BW	ADJ. WW	ADJ. YW	ADJ. IMF	ADJ. BF	ADJ. REA	FRAME	ADG	FEED CONV	RFI
Value	80	756	1314	3.68	0.21	13.86	6+	4.27	5.61	1.70
Ratio	97	112	110	95	100	99	-	127	113	-



36 BRIDLE BIT MR M4101
 Homo Black || Homo Polled 1/2 SM 1/2 AN
 2/23/2024 M4101 ASA# 4353370

37 FOCR MR M442
 Homo Black || Homo Polled 1/2 SM 1/2 AN
 2/6/2024 M442 ASA# 4343925

BRIDLE BIT CALVARY C503 TJ OMAHA 378A
BRIDLE BIT ECLIPSE E744 JC MS OMAHA 563C
 BRIDLE BIT MISS A327 JC MS NO FAULT 137Y

BRIDLE BIT CALVARY C503 TJ SHARPER IMAGE 809U
BRIDLE BIT ECLIPSE E744 TJ 670D
 BRIDLE BIT MISS A327 TJ 36A

	CE	BW	WW	YW	ADG	MCE	MILK	MWW		
EPD	15.3	-1.6	79.6	126.6	0.29	8.9	26.6	66.3		
Rank	25	25	40	40	40	25	25	35		
	STAY	DOC	CW	YG	MARB	REA	API	TI		
EPD	12.7	15.5	35.7	-0.02	0.67	0.16	153.2	92.2		
Rank	70	15	50	95	15	99	25	20		
	BW	ADJ.WW	ADJ.YW	ADJ.IMF	ADJ.BF	ADJ.REA	FRAME	ADG	FEED CONV	RFI
Value	83	614	1024	4.28	0.17	10.64	5+	3.57	5.42	-0.75
Ratio	100	91	86	111	81	76	-	106	116	-

	CE	BW	WW	YW	ADG	MCE	MILK	MWW		
EPD	14.1	2.9	93.4	145.6	0.33	8.3	30.6	77.3		
Rank	35	95	10	10	20	30	10	3		
	STAY	DOC	CW	YG	MARB	REA	API	TI		
EPD	19.0	18.9	52.7	0.02	0.56	0.40	154.5	92.2		
Rank	15	2	10	95	30	90	20	20		
	BW	ADJ.WW	ADJ.YW	ADJ.IMF	ADJ.BF	ADJ.REA	FRAME	ADG	FEED CONV	RFI
Value	87	651	1077	3.75	0.23	11.86	5+	3.52	5.67	-0.63
Ratio	ET	ET	ET	96	110	96	-	104	112	-



HARVEST *data*

We harvest all calves that do not make bulls or replacement females.

2024 DATA

Dressing %	Ave. REA	Choice or Better	Prime	Ave. HCW
64.1%	13.7	100%	65.4%	847 lbs.

Days of Age	YG2	YG3	YG4
495	16%	52%	29%



GIBBS 9114G ESSENTIAL

Homo Black || Homo Polled PB SM
 9/5/2019 9114G ASA# 3716905

SIRE: GIBBS 7382E BROAD RANGE
 DAM: GIBBS 7153E STAR 3136A
 MGS: HOOK'S BROADWAY 11B

CE	BW	WW	YW	MCE	MILK	MWW	STAY
15.4	-1.7	102.1	172.9	8.9	32.7	83.7	16.8
10	10	2	1	10	4	1	40
DOC	CW	YG	MARB	BF	REA	API	TI
18.6	58.9	-0.27	0.51	0.01	1.50	177.5	109.0
2	2	90	10	99	1	4	1

Essential is proving to be a genetic superstar who rivals any bull in the business for the spread he offers from birth to yearling. The sons are wonderful structured, easy to look at, great for docility and will no doubt sire cattle who create premiums.



GIBBS 9114G ESSENTIAL || Sire of Lots 38-48.



WCLC MR M403 || Sells as Lot 38.

38

WCLC MR M403

Homo Black || Homo Polled 3/4 SM 1/4 AN
 2/15/2024 M403 ASA# 4339863

GIBBS 7382E BROAD RANGE J BAR J NIGHTRIDE 225Z
GIBBS 9114G ESSENTIAL BRIDLE BIT RUNWAY GIRL F828
 GIBBS 7153E STAR 3136A BRIDLE BIT MISS D6112

	CE	BW	WW	YW	ADG	MCE	MILK	MWW
EPD	18.7	-2.9	88.0	146.8	0.37	10.8	25.8	69.7
Rank	4	15	20	10	10	5	35	20
	STAY	DOC	CW	YG	MARB	REA	API	TI
EPD	17.1	19.7	59.1	-0.13	0.59	1.17	169.5	98.1
Rank	30	2	5	70	25	2	10	10

	BW	ADJ. WW	ADJ. YW	ADJ. IMF	ADJ. BF	ADJ. REA	FRAME	ADG	FEED CONV	RFI
Value	73	771	1238	3.77	0.31	15.18	6+	4.11	4.71	-2.69
Ratio	100	100	100	100	100	100	-	122	127	-



BRIDLE BIT RUNWAY GIRL F828 || Dam of Lot 38.

MORE with less

For over 50 years, Bridle Bit Simmentals has built a cow herd known for performance adaptability, that produces cattle that perform in any environment.

TODAY performance adaptability is only one piece of what we do. With the rising cost of every input, our greatest tool is the efficiency data we are generating to benefit our customer's bottom line, and ours too.

39

FOCR MR M421

Homo Black || Homo Polled PB SM
1/15/2024 M421 ASA# 4343906

GIBBS 7382E BROAD RANGE COLORADO BRIDLE BIT E752
GIBBS 9114G ESSENTIAL BRIDLE BIT MISS H033
GIBBS 7153E STAR 3136A BRIDLE BIT MISS F801

	CE	BW	WW	YW	ADG	MCE	MILK	MWW		
EPD	17.2	-4.7	85.4	131.2	0.29	9.8	33.8	76.4		
Rank	4	1	30	25	25	5	3	5		
	STAY	DOC	CW	YG	MARB	REA	API	TI		
EPD	20.5	17.0	39.2	-0.34	0.41	1.37	177.6	99.5		
Rank	10	5	20	65	20	1	4	5		
	BW	ADJ. WW	ADJ. YW	ADJ. IMF	ADJ. BF	ADJ. REA	FRAME	ADG	FEED CONV	RFI
Value	73	709	1159	3	0.21	15.69	5-	3.65	6.99	3.43
Ratio	94	107	97	85	100	112	-	108	92	-



FOCR MR M421 || Sells as Lot 39.

40

BRIDLE BIT MR M422

Homo Black || Homo Polled PB SM
2/7/2024 M422 ASA# 4353287

GIBBS 7382E BROAD RANGE BRIDLE BIT ECLIPSE E744
GIBBS 9114G ESSENTIAL BRIDLE BIT MISS J107
GIBBS 7153E STAR 3136A BRIDLE BIT MISS Z206

	CE	BW	WW	YW	ADG	MCE	MILK	MWW		
EPD	15.4	-1.3	94.6	157.2	0.39	8.3	33.4	80.6		
Rank	10	15	10	3	2	15	4	2		
	STAY	DOC	CW	YG	MARB	REA	API	TI		
EPD	14.6	17.2	56.7	-0.20	0.44	0.99	163.9	101.5		
Rank	60	4	2	99	15	25	15	4		
	BW	ADJ. WW	ADJ. YW	ADJ. IMF	ADJ. BF	ADJ. REA	FRAME	ADG	FEED CONV	RFI
Value	84	791	1474	4.25	0.25	13.64	6+	4.17	5.64	0.20
Ratio	107	117	123	110	119	97	-	124	113	-



BRIDLE BIT MR M422 || Sells as Lot 40.

41

BRIDLE BIT MR M417

Homo Black || Homo Polled 3/4 SM 1/4 AN
2/5/2024 M417 ASA# 4353282

GIBBS 7382E BROAD RANGE J BAR J NIGHTRIDE 225Z
GIBBS 9114G ESSENTIAL BRIDLE BIT MISS E783
GIBBS 7153E STAR 3136A BRIDLE BIT MISS X058

	CE	BW	WW	YW	ADG	MCE	MILK	MWW		
EPD	20.0	-5.0	72.8	118.6	0.29	11.6	30.0	66.3		
Rank	2	2	65	55	40	3	10	35		
	STAY	DOC	CW	YG	MARB	REA	API	TI		
EPD	13.5	18.8	45.3	-0.26	0.59	1.33	161.4	92.2		
Rank	65	2	25	35	25	1	15	20		
	BW	ADJ. WW	ADJ. YW	ADJ. IMF	ADJ. BF	ADJ. REA	FRAME	ADG	FEED CONV	RFI
Value	71	706	1227	4.55	0.24	15.97	6-	3.81	5.43	-1.26
Ratio	86	105	102	118	114	114	-	113	116	-



BRIDLE BIT MR M417 || Sells as Lot 41.



42 FOCR MR M435
 Hetero Black || Homo Polled 3/4 SM 1/4 AN
 2/1/2024 M435 ASA# 4343919

GIBBS 7382E BROAD RANGE TRPH RRR NIGHTFORCE B30
GIBBS 9114G ESSENTIAL RRR MS NIGHTFORCE 50G
 GIBBS 7153E STAR 3136A RAB MS 4161U Y9250

	CE	BW	WW	YW	ADG	MCE	MILK	MWW		
EPD	13.1	-0.9	82.8	132.7	0.31	6.8	31.6	72.9		
Rank	50	35	30	25	30	55	4	10		
	STAY	DOC	CW	YG	MARB	REA	API	TI		
EPD	16.5	15.0	27.5	-0.20	0.74	0.92	162.7	96.1		
Rank	35	20	75	50	10	15	15	10		
	BW	ADJ. WW	ADJ. YW	ADJ. IMF	ADJ. BF	ADJ. REA	FRAME	ADG	FEED CONV	RFI
Value	88	707	1145	3.64	0.21	14.98	6-	3.91	6.15	2.49
Ratio	111	107	96	104	100	107	-	116	105	-



43 FOCR MR M423
 Homo Black || Homo Polled 3/4 SM 1/4 AN
 1/18/2024 M423 ASA# 4343908

GIBBS 7382E BROAD RANGE TJ SHARPER IMAGE 809U
GIBBS 9114G ESSENTIAL TJ 678D
 GIBBS 7153E STAR 3136A TJ 3Z

	CE	BW	WW	YW	ADG	MCE	MILK	MWW		
EPD	13.7	-0.4	87.7	138.4	0.32	8.9	25.0	68.8		
Rank	40	45	20	20	25	25	40	25		
	STAY	DOC	CW	YG	MARB	REA	API	TI		
EPD	24.7	14.5	31.7	-0.21	0.49	1.03	167.1	91.6		
Rank	1	25	60	50	35	10	10	20		
	BW	ADJ. WW	ADJ. YW	ADJ. IMF	ADJ. BF	ADJ. REA	FRAME	ADG	FEED CONV	RFI
Value	80	591	1151	3.21	0.2	14.64	5+	3.67	6.58	2.72
Ratio	100	89	96	91	95	105	-	109	98	-



BRIDLE BIT MISS B440 || Dam of Lot 44.



44 BRIDLE BIT MR M4119
 Hetero Black || Homo Polled PB SM
 2/29/2024 M4119 ASA# 4353388

GIBBS 7382E BROAD RANGE MR NLC UPGRADE U8676
GIBBS 9114G ESSENTIAL BRIDLE BIT MISS B440
 GIBBS 7153E STAR 3136A BRIDLE BIT MISS U809

	CE	BW	WW	YW	ADG	MCE	MILK	MWW		
EPD	17.3	-2.9	79.5	130.0	0.32	10.1	24.7	64.4		
Rank	4	4	50	30	15	4	40	45		
	STAY	DOC	CW	YG	MARB	REA	API	TI		
EPD	17.4	15.0	36.5	-0.31	0.46	1.14	170.1	94.5		
Rank	30	15	30	80	15	10	10	15		
	BW	ADJ. WW	ADJ. YW	ADJ. IMF	ADJ. BF	ADJ. REA	FRAME	ADG	FEED CONV	RFI
Value	73	664	1179	3.7	0.17	15.95	5+	2.92	7.35	0.69
Ratio	88	98	98	96	81	114	-	86	86	-



BRIDLE BIT MR M4119 || Sells as Lot 44.

45 BRIDLE BIT MR M414
 Homo Black || Homo Polled PB SM
 2/4/2024 M414 ASA# 4353279

GIBBS 7382E BROAD RANGE GIBBS 5063C HOME RUN
GIBBS 9114G ESSENTIAL BRIDLE BIT MISS F838
 GIBBS 7153E STAR 3136A BRIDLE BIT MISS Z253

	CE	BW	WW	YW	ADG	MCE	MILK	MWW		
EPD	19.6	-5.2	65.6	103.7	0.24	11.2	27.3	60.0		
Rank	1	1	95	80	55	2	20	65		
	STAY	DOC	CW	YG	MARB	REA	API	TI		
EPD	19.4	13.6	19.9	-0.29	0.34	1.00	167.7	85.8		
Rank	15	30	85	85	25	20	10	35		
	BW	ADJ. WW	ADJ. YW	ADJ. IMF	ADJ. BF	ADJ. REA	FRAME	ADG	FEED CONV	RFI
Value	71	609	1026	3.34	0.28	13.78	5	-	-	-
Ratio	86	90	86	86	133	98	-	-	-	-



46 FOCR MR M409
 Homo Black || Homo Polled PB SM
 1/11/2024 M409 ASA# 4343894

GIBBS 7382E BROAD RANGE HOOK'S EAGLE 6E
GIBBS 9114G ESSENTIAL FOCR MISS J121
 GIBBS 7153E STAR 3136A BDK MS LUCKY FIGURE W957

	CE	BW	WW	YW	ADG	MCE	MILK	MWW		
EPD	14.5	-3.6	77.0	115.3	0.24	7.7	26.2	64.7		
Rank	20	2	60	55	55	25	30	40		
	STAY	DOC	CW	YG	MARB	REA	API	TI		
EPD	18.1	13.4	32.7	-0.29	0.39	1.07	161.7	91.0		
Rank	25	30	40	85	20	15	15	20		
	BW	ADJ. WW	ADJ. YW	ADJ. IMF	ADJ. BF	ADJ. REA	FRAME	ADG	FEED CONV	RFI
Value	76	578	1043	3.59	0.19	10.99	5-	3.37	5.78	-0.84
Ratio	100	87	87	102	90	79	-	100	111	-



47 BRIDLE BIT MR M474
 Homo Black || Homo Polled 3/4 SM 3/16 AN 1/16 AR
 2/17/2024 M474 ASA# 4353339

GIBBS 7382E BROAD RANGE HOOK'S BLACK HAWK 50B
GIBBS 9114G ESSENTIAL BRIDLE BIT MISS F806
 GIBBS 7153E STAR 3136A BRIDLE BIT MISS W907

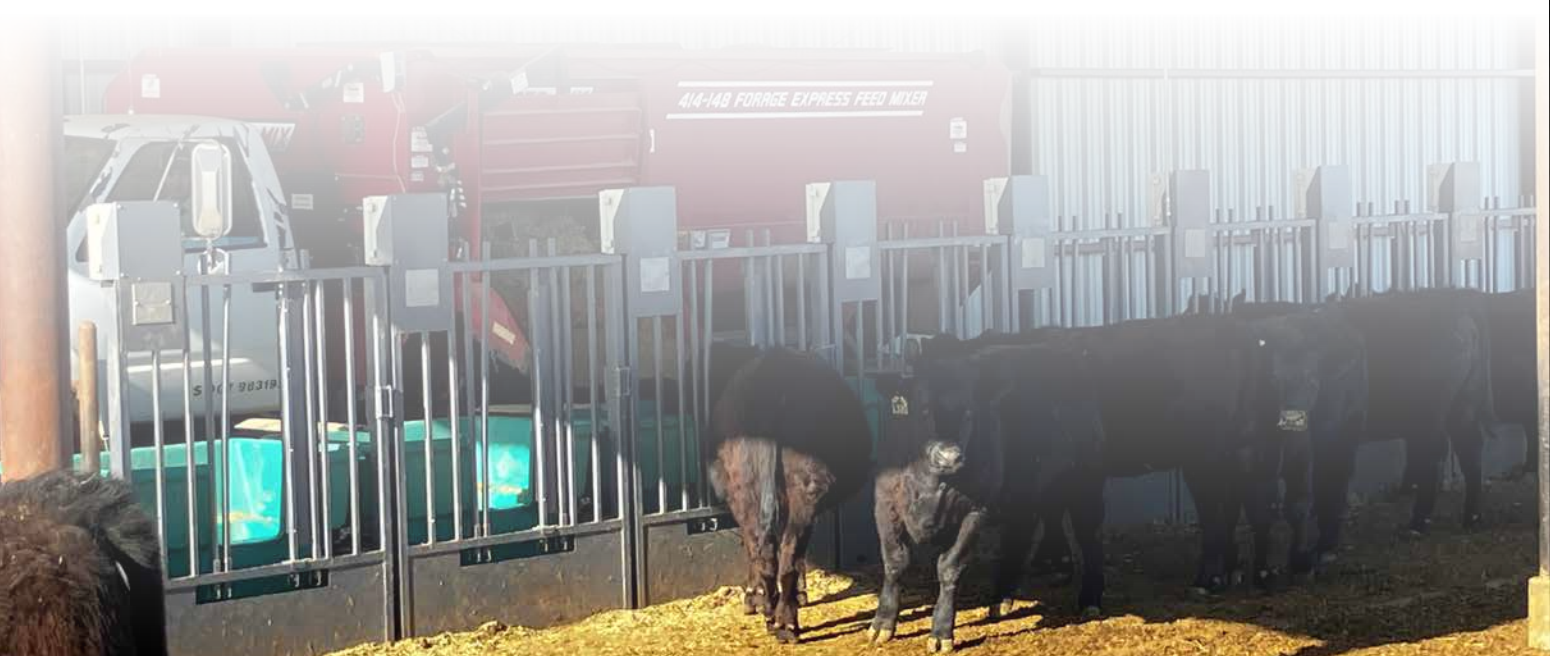
	CE	BW	WW	YW	ADG	MCE	MILK	MWW		
EPD	17.2	-3.6	75.3	128.7	0.33	8.6	26.4	63.9		
Rank	10	10	60	35	20	25	30	45		
	STAY	DOC	CW	YG	MARB	REA	API	TI		
EPD	18.4	12.9	38.5	-0.27	0.31	1.23	152.4	85.2		
Rank	15	45	40	30	65	1	25	40		
	BW	ADJ. WW	ADJ. YW	ADJ. IMF	ADJ. BF	ADJ. REA	FRAME	ADG	FEED CONV	RFI
Value	82	615	1186	3.67	0.2	14.96	5+	4.75	4.06	-0.82
Ratio	99	91	99	95	95	107	-	141	137	-



48 FOCR MR M412
 Homo Black || Homo Polled PB SM
 1/12/2024 M412 ASA# 4343897

GIBBS 7382E BROAD RANGE LBRS GENESIS G69
GIBBS 9114G ESSENTIAL FOCR MISS K201
 GIBBS 7153E STAR 3136A FOCR Y101

	CE	BW	WW	YW	ADG	MCE	MILK	MWW		
EPD	15.8	-2.6	87.6	137.1	0.31	8.6	28.3	72.0		
Rank	10	4	20	20	20	15	15	15		
	STAY	DOC	CW	YG	MARB	REA	API	TI		
EPD	18.5	13.6	36.8	-0.19	0.60	0.96	178.7	101.7		
Rank	20	30	25	99	10	30	4	3		
	BW	ADJ. WW	ADJ. YW	ADJ. IMF	ADJ. BF	ADJ. REA	FRAME	ADG	FEED CONV	RFI
Value	73	668	1150	3.8	0.18	13.34	6-	-	-	-
Ratio	99	101	96	108	86	96	-	-	-	-





BRIDLE BIT MR M435 || Sells as Lot 49.

49 **BRIDLE BIT MR M435**
 Homo Black || Homo Polled 5/8 SM 3/8 AN
 2/9/2024 M435 ASA# 4353300

GW STEP OUT 672X J BAR J NIGHTRIDE 225Z
REDHILL 672X X004 231A **BRIDLE BIT MISS F856**
 GW MISS PREM BEEF X004 BRIDLE BIT MISS W923

	CE	BW	WW	YW	ADG	MCE	MILK	MWW
EPD	14.6	-3.4	72.8	116.7	0.27	10.0	15.6	51.9
Rank	30	10	65	55	50	10	99	95
	STAY	DOC	CW	YG	MARB	REA	API	TI
EPD	20.9	12.6	22.0	-0.17	0.78	0.42	176.2	92.6
Rank	4	50	85	60	10	90	4	15

	BW	ADJ. WW	ADJ. YW	ADJ. IMF	ADJ. BF	ADJ. REA	FRAME	ADG	FEED CONV	RFI
Value	83	700	1263	3.45	0.19	13.44	5+	2.48	8.79	-0.17
Ratio	100	104	105	89	90	96	-	74	64	-





REDHILL 672X X004 231A || Sire of Lots 49-52.

REDHILL 672X X004 231A

Homo Black || Homo Polled 5/8 SM 3/8 AN
 9/28/2013 231A ASA# 2847534

SIRE: **GW STEP OUT 672X**
 DAM: **GW MISS PREM BEEF X004**
 MGS: **GW PREMIUM BEEF 021TS**

CE	BW	WW	YW	MCE	MILK	MWW	STAY
11.8	-0.3	87.1	144.5	9.6	7.7	51.2	19.3
65	45	20	15	15	99	95	10
DOC	CW	YG	MARB	BF	REA	API	TI
15.8	33.3	-0.41	0.74	-0.06	1.13	170.0	97.0
15	55	4	10	15	3	10	10

231A was a herd sire we tested outside of our program and the results speak for themselves. The bulls are absolute brutes for mass, volume and sheer performance. What makes them unique is they weigh like lead and do not add additional frame. Physically the bulls are marked with striking balanced and are stamped with uniformity.

50

BRIDLE BIT MR M463

Homo Black || Homo Polled 5/8 SM 3/8 AN
 2/14/2024 M463 ASA# 4353328

GW STEP OUT 672X SAND RANCH HAND
REDHILL 672X X004 231A BRIDLE BIT MISS B452
 GW MISS PREM BEEF X004 BRIDLE BIT MISS Y183

CE	BW	WW	YW	ADG	MCE	MILK	MWW			
12.4	1.1	94.0	154.9	0.38	9.1	21.4	68.3			
55	70	10	5	5	20	70	25			
STAY	DOC	CW	YG	MARB	REA	API	TI			
16.0	16.0	43.1	-0.44	0.46	1.17	149.0	94.0			
40	15	30	2	40	2	30	15			
BW	ADJ. WW	ADJ. YW	ADJ. IMF	ADJ. BF	ADJ. REA	FRAME	ADG	FEED CONV	RFI	
91	693	1433	3.37	0.21	14.33	6-	3.99	5.70	-0.26	
Ratio	ET	ET	ET	93	117	108	-	118	112	-



BRIDLE BIT MR M463 || Sells as Lot 50.

51

BRIDLE BIT MR M438

Homo Black || Homo Polled 5/8 SM 3/8 AN
 2/9/2024 M438 ASA# 4353303

GW STEP OUT 672X SAND RANCH HAND
REDHILL 672X X004 231A BRIDLE BIT MISS B452
 GW MISS PREM BEEF X004 BRIDLE BIT MISS Y183

CE	BW	WW	YW	ADG	MCE	MILK	MWW			
12.4	-0.8	81.4	137.0	0.35	9.1	21.4	62.0			
55	40	35	20	10	20	70	55			
STAY	DOC	CW	YG	MARB	REA	API	TI			
22.5	17.0	41.5	-0.30	0.53	0.91	163.9	89.9			
2	10	35	25	30	15	10	25			
BW	ADJ. WW	ADJ. YW	ADJ. IMF	ADJ. BF	ADJ. REA	FRAME	ADG	FEED CONV	RFI	
75	626	1054	4.35	0.2	13.03	5-	2.29	9.29	0.30	
Ratio	ET	ET	ET	120	111	98	-	68	56	-



BRIDLE BIT MISS B452 || Dam of Lots 50-52.



52	BRIDLE BIT MR M444	
	Homo Black Homo Polled 2/10/2024	5/8 SM 3/8 AN M444 ASA# 4353309

GW STEP OUT 672X
REDHILL 672X X004 231A
 GW MISS PREM BEEF X004

SAND RANCH HAND
BRIDLE BIT MISS B452
 BRIDLE BIT MISS Y183

	CE	BW	WW	YW	ADG	MCE	MILK	MWW		
EPD	11.7	-2.2	78.8	130.9	0.33	8.7	21.4	60.7		
Rank	65	20	45	30	20	25	70	60		
	STAY	DOC	CW	YG	MARB	REA	API	TI		
EPD	21.3	12.8	49.2	-0.33	0.49	0.90	159.5	88.9		
Rank	3	50	15	15	35	15	15	25		
	BW	ADJ. WW	ADJ. YW	ADJ. IMF	ADJ. BF	ADJ. REA	FRAME	ADG	FEED CONV	RFI
Value	70	598	1071	3.56	0.18	12.73	6-	3.31	6.39	0.60
Ratio	ET	ET	ET	98	100	96	-	98	101	-



ASA QUICK REFERENCE TO EPDS, INDEXES AND \$VALUES

EXPECTED PROGENY DIFFERENCES (EPDS): EPDs are the most accurate and effective tool available for comparing genetic levels. In using EPDs, the difference between two sires' EPDs represents the unit difference expected in the performance of their progeny. For example, if sires A and B have EPDs of +10 and -5, a 15-unit difference would be expected in their progeny (moving from -5 to +10 yields 15 units). Key to using EPDs is knowing in what units they are expressed. For example, if the above case referred to weaning weight EPDs, sire A would be expected to sire 15 pounds more weaning weight than sire B. If calving ease was the trait, sire A would be expected to sire 15 percent more unassisted births in first-calf heifers; in other words, if sire B sired 30 assists in a group of 100 heifers, we would expect sire A to require 15 assists. A percentile-ranking chart is required to determine where a bull's EPDs rank him relative to other bulls in the breed. For more detailed information about EPDs and \$ indexes, visit www.simmental.org.

Listed below are the units in which ASA EPDs are expressed:

- ALL-PURPOSE INDEX (API): Dollars per cow exposed under an all-purpose-sire scenario.
- BACK FAT (BF): Inches of carcass backfat at 475 days.
- BIRTH WEIGHT (BW): Pounds of birth weight.
- CALVING EASE (CE): Percent of unassisted births when used on heifers.
- CARCASS WEIGHT (CW): Pounds of carcass weight at 475 days.
- DOCILITY (DOC): Percent of offspring receiving a disposition score of 1 (docile).
- MATERNAL CALVING EASE (MCE): Percent of unassisted births in first-calving daughters.
- MILK (MLK): Pounds of weaning weight due to milk.
- MARBLING (MARB): Carcass marbling score at 475 days.
- MATERNAL WEANING WEIGHT (MWW): Pounds of weaning weight due to milk and growth.
- RIBEYE AREA (REA): Square inches of carcass ribeye at 475 days.
- TERMINAL INDEX (TI): Dollars per cow exposed under a terminal-sire scenario.
- WEANING WEIGHT (WW): Pounds of weaning weight.
- YEARLING WEIGHT (YW): Pounds of yearling weight.
- YIELD GRADE (YG): Carcass yield grade score at 475 days.

\$ INDEXES: Though EPDs allow for the comparison of genetic levels for many economically important traits, they only provide pieces of the economic puzzle. This is where \$ indexes come in. Through well-conceived, rigorous mathematical computation, \$ indexes blend EPDs and economics to estimate an animal's overall impact on integrated commercial production. The same technology that led to the dramatic progress in swine, poultry and dairy genetics over the last several decades was used to develop the following \$ indexes:

- ALL-PURPOSE INDEX (API): Evaluates sires for use on the entire cow herd (bred to both Angus first-calf heifers and mature cows) with the portion of their daughters required to maintain herd size retained and the remaining heifers and steers put on feed and sold grade and yield.
- TERMINAL INDEX (TI): Evaluates sires for use on mature Angus cows with all offspring put on feed and sold grade and yield.

For more detailed information about EPDs and \$indexes, visit: www.simmental.org





LCDR PROGRESSIVE 106G || Sire of Lots 53-55.

LCDR PROGRESSIVE 106G

Homo Black || Homo Polled PB SM
 2/21/2019 106G ASA# 3646242

SIRE: **CDI INNOVATOR 325D**
 DAM: **WS MISS SUGAR C4**
 MGS: **CLRS GRADE-A 875 A**

CE	BW	WW	YW	MCE	MILK	MWW	STAY
18.3	-3.2	89.8	138.4	9.3	28.8	73.7	13.4
2	3	20	15	10	15	10	75
DOC	CW	YG	MARB	BF	REA	API	TI
14.5	48.9	-0.26	0.55	-0.06	0.88	171.3	103.2
20	10	90	10	80	45	10	3

Here are some higher percentage bulls who will be heifer safe and high accuracy. The bulls will add length extension and growth. Progressive has been one of the most bulls in the industry and the lead bull for Select Sires.

53 FOCR MR M415

Homo Black || Homo Polled 3/4 SM 1/4 AN
 1/14/2024 M415 ASA# 4343900

CDI INNOVATOR 325D HOOK'S GALILEO 210G
LCDR PROGRESSIVE 106G **FOCR MISS K204**
 WS MISS SUGAR C4 RRR MS NIGHTFORCE 50G

CE	BW	WW	YW	ADG	MCE	MILK	MWW		
18.5	-4.2	77.2	115.5	0.24	10.4	32.5	71.0		
4	4	50	60	70	10	3	15		
STAY	DOC	CW	YG	MARB	REA	API	TI		
16.4	14.4	24.6	-0.29	0.63	0.78	166.1	94.5		
35	25	80	25	20	30	10	15		
BW	ADJ. WW	ADJ. YW	ADJ. IMF	ADJ. BF	ADJ. REA	FRAME	ADG	FEED CONV	RFI
72	715	1138	3.5	0.14	13.21	5-	3.04	6.55	-1.89
98	108	95	100	67	95	-	90	99	-



FOCR MR M415 || Sells as Lot 53.

54 FOCR MR M431

Homo Black || Homo Polled PB SM
 1/28/2024 M431 ASA# 4343916

CDI INNOVATOR 325D HOOK'S BLACK HAWK 50B
LCDR PROGRESSIVE 106G **FOCR MISS G915**
 WS MISS SUGAR C4 BRIDLE BIT MISS E781

CE	BW	WW	YW	ADG	MCE	MILK	MWW		
15.5	-2.6	79.8	118.0	0.24	8.1	26.7	66.5		
10	4	45	50	55	20	25	35		
STAY	DOC	CW	YG	MARB	REA	API	TI		
14.5	13.8	43.5	-0.32	0.25	0.96	147.5	88.2		
60	25	15	75	40	30	30	30		
BW	ADJ. WW	ADJ. YW	ADJ. IMF	ADJ. BF	ADJ. REA	FRAME	ADG	FEED CONV	RFI
81	646	1138	2.43	0.16	14.05	5+	4.16	4.28	-3.89
103	97	95	69	76	101	-	123	134	-



55 FOCR MR M408

Hetero Black || Homo Polled 3/4 SM 1/4 AN
 1/11/2024 M408 ASA# 4343893

CDI INNOVATOR 325D J BAR J NIGHTRIDE 225Z
LCDR PROGRESSIVE 106G **BRIDLE BIT MISS E796**
 WS MISS SUGAR C4 BRIDLE BIT MISS A307

CE	BW	WW	YW	ADG	MCE	MILK	MWW		
16.0	0.5	97.7	148.3	0.32	8.4	26.7	75.5		
15	60	4	10	25	30	25	5		
STAY	DOC	CW	YG	MARB	REA	API	TI		
13.4	12.0	62.9	-0.38	0.54	1.41	153.0	99.0		
65	60	3	10	30	1	25	5		
BW	ADJ. WW	ADJ. YW	ADJ. IMF	ADJ. BF	ADJ. REA	FRAME	ADG	FEED CONV	RFI
78	732	1291	3.09	0.18	16.84	5+	3.80	5.69	-1.69
98	110	108	88	86	121	-	113	112	-





BRIDLE BIT MR M418 || Sells as Lot 56.

56

BRIDLE BIT MR M418

Homo Black || Homo Polled PB SM

2/6/2024 M418 ASA# 4353283

KOCH BIG TIMBER 685D TJ GOLD 274G
BRIDLE BIT GPS H078 **BRIDLE BIT MISS J108**
 BRIDLE BIT MISS F840 BRIDLE BIT MISS F848

	CE	BW	WW	YW	ADG	MCE	MILK	MWW
EPD	9.2	1.3	104.2	158.4	0.34	4.6	20.1	72.1
Rank	80	55	2	3	10	75	75	15
	STAY	DOC	CW	YG	MARB	REA	API	TI
EPD	15.3	8.6	52.1	-0.29	0.43	1.00	153.8	101.2
Rank	55	85	4	85	20	20	25	4

	BW	ADJ. WW	ADJ. YW	ADJ. IMF	ADJ. BF	ADJ. REA	FRAME	ADG	FEED CONV	RFI
Value	98	819	1389	4.95	0.27	14.67	6	3.97	5.84	0.09
Ratio	122	100	100	100	100	100	-	118	110	-





BRIDLE BIT GPS HO78 || Sire of Lots 56-59.

BRIDLE BIT GPS HO78

Homo Black || Homo Polled PB SM
 2/16/2020 Ho78 ASA# 3724830

SIRE: KOCH BIG TIMBER 685D
 DAM: BRIDLE BIT MISS F840
 MGS: CLRS DIVIDEND 405D

CE	BW	WW	YW	MCE	MILK	MWW	STAY
14.4	-1.4	96.4	139.8	9.5	16.8	65.0	18.3
20	15	10	15	10	95	40	25
DOC	CW	YG	MARB	BF	REA	API	TI
2.2	51.6	-0.11	0.21	-0.04	0.55	153.8	93.3
99	4	99	45	90	99	25	15

The great group of sons sired by our 2021 sale topping herd sire GPS. Many of the sons receive the ACE logo pointing to the fact they will be heifer safe. The bulls are sensible in terms of frame size and are much easier fleshing compared to their grandsire Big Timber. Study the GPS X B452 flush closely they combine two of highest producing cow families.

57 BRIDLE BIT MR M4120

Homo Black || Homo Polled PB SM
 2/29/2024 M4120 ASA# 4353389

KOCH BIG TIMBER 685D HOOK'S ENCORE 65E
BRIDLE BIT GPS HO78 **BRIDLE BIT MISS G981**
 BRIDLE BIT MISS F840 BRIDLE BIT MISS Z258

CE	BW	WW	YW	ADG	MCE	MILK	MWW			
14.5	-3.0	86.4	131.1	0.28	8.6	20.3	63.6			
20	3	25	25	30	15	75	45			
STAY	DOC	CW	YG	MARB	REA	API	TI			
20.6	7.6	32.2	-0.14	0.45	0.56	171.9	96.1			
10	90	40	99	15	95	10	10			
BW	ADJ. WW	ADJ. YW	ADJ. IMF	ADJ. BF	ADJ. REA	FRAME	ADG	FEED CONV	RFI	
82	667	1236	3.8	0.19	14.11	6-	3.42	7.14	3.51	
Ratio	100	99	103	98	90	101	-	101	90	-



58 BRIDLE BIT MR M4123

Homo Black || Homo Polled PB SM
 2/29/2024 M4123 ASA# 4353392

KOCH BIG TIMBER 685D KBHR CHRISUM H160
BRIDLE BIT GPS HO78 **BRIDLE BIT MISS K209**
 BRIDLE BIT MISS F840 BRIDLE BIT MISS F856

CE	BW	WW	YW	ADG	MCE	MILK	MWW			
14.6	-1.4	95.9	147.4	0.32	10.0	21.2	69.1			
15	15	10	10	15	4	65	25			
STAY	DOC	CW	YG	MARB	REA	API	TI			
16.1	6.6	51.3	-0.06	0.58	0.46	171.4	103.2			
45	95	5	99	10	99	10	3			
BW	ADJ. WW	ADJ. YW	ADJ. IMF	ADJ. BF	ADJ. REA	FRAME	ADG	FEED CONV	RFI	
80	655	1297	4.3	0.2	11.74	6	3.98	5.41	0.53	
Ratio	104	97	108	111	95	84	-	118	116	-



59 BRIDLE BIT MR M4121

Homo Black || Homo Polled PB SM
 2/29/2024 M4121 ASA# 4353390

KOCH BIG TIMBER 685D HOOK'S ENCORE 65E
BRIDLE BIT GPS HO78 **BRIDLE BIT MISS G919**
 BRIDLE BIT MISS F840 BRIDLE BIT MISS E739

CE	BW	WW	YW	ADG	MCE	MILK	MWW			
11.7	-1.5	80.6	117.5	0.23	7.5	23.1	63.3			
50	10	45	50	65	25	50	50			
STAY	DOC	CW	YG	MARB	REA	API	TI			
18.5	5.3	23.8	-0.10	0.25	0.27	147.3	85.4			
20	99	70	99	40	99	30	35			
BW	ADJ. WW	ADJ. YW	ADJ. IMF	ADJ. BF	ADJ. REA	FRAME	ADG	FEED CONV	RFI	
87	709	1163	3	0.19	12.86	6-	3.35	7.06	2.38	
Ratio	105	105	97	78	90	92	-	99	91	-



BRIDLE BIT RED ROCK G9124

ND Red || Homo Polled 3/4 SM 1/4 AN
 3/22/2019 G9124 ASA# 3560970

SIRE: **WS ALL ABOARD B80**
 DAM: **BRIDLE BIT MISS A327**
 MGS: **BAR CK TEBOW 1006X**

CE	BW	WW	YW	MCE	MILK	MWW	STAY
21.0	-5.0	81.7	123.7	11.8	26.0	66.8	8.3
1	2	35	45	2	30	30	95
DOC	CW	YG	MARB	BF	REA	API	TI
15.1	26.8	-0.31	1.03	-0.06	0.69	178.8	108.1
20	75	20	2	15	45	3	1

One of the most popular red Simmental heifer bulls in the industry who was a sale topper in our 2020 production sale. The Red Rocks are making incredible bulls and great replacement females. His combination of calving ease and marbling is a rare find in a red package.



BRIDLE BIT RED ROCK G9124 || Sire of Lots 60-64.



FOCR MR M432 || Sells as Lot 60.

60

FOCR MR M432

ND Red || Homo Polled 3/4 SM 1/4 AN
 1/28/2024 M432 ASA# 4343917

SIRE: **WS ALL ABOARD B80** **WS OUTCROSS C164**
BRIDLE BIT RED ROCK G9124 **FOCR MISS F807**
 BRIDLE BIT MISS A327 FOCR MISS DREAMER C506

	CE	BW	WW	YW	ADG	MCE	MILK	MWW		
EPD	20.3	-1.5	88.7	141.7	0.33	11.5	23.9	68.2		
Rank	2	25	15	15	20	3	50	25		
	STAY	DOC	CW	YG	MARB	REA	API	TI		
EPD	14.6	15.4	39.3	-0.35	0.59	0.95	164.4	97.5		
Rank	55	20	40	15	25	10	10	10		
	BW	ADJ. WW	ADJ. YW	ADJ. IMF	ADJ. BF	ADJ. REA	FRAME	ADG	FEED CONV	RFI
Value	68	654	1273	3.43	0.2	15.37	5+	3.78	6.14	0.78
Ratio	85	99	107	98	95	110	-	112	105	-



61

FOCR MR M427

ND Red || Homo Polled 5/8 SM 7/32 AR 5/32 AN
 1/22/2024 M427 ASA# 4343912

SIRE: **WS ALL ABOARD B80** **BRIDLE BIT MR C569**
BRIDLE BIT RED ROCK G9124 **FOCR MISS H019**
 BRIDLE BIT MISS A327 BRIDLE BIT MISS E723

	CE	BW	WW	YW	ADG	MCE	MILK	MWW		
EPD	14.6	-0.2	93.9	147.0	0.33	7.7	23.6	70.5		
Rank	30	50	10	10	20	40	55	15		
	STAY	DOC	CW	YG	MARB	REA	API	TI		
EPD	12.3	13.1	55.3	-0.32	0.72	0.94	158.7	101.4		
Rank	75	45	10	20	15	15	15	4		
	BW	ADJ. WW	ADJ. YW	ADJ. IMF	ADJ. BF	ADJ. REA	FRAME	ADG	FEED CONV	RFI
Value	79	701	1260	4.02	0.2	15.21	6+	3.73	5.53	-1.89
Ratio	100	106	105	115	95	109	-	111	115	-



62

FOCR MR M441

ND Red || Homo Polled PB SM
 2/6/2024 M441 ASA# 4343924

SIRE: **WS ALL ABOARD B80** **KBHR SNIPER E036**
BRIDLE BIT RED ROCK G9124 **FOCR MISS H07**
 BRIDLE BIT MISS A327 FOCR MISS F807

	CE	BW	WW	YW	ADG	MCE	MILK	MWW		
EPD	19.7	-1.0	85.7	135.5	0.31	11.6	26.3	69.1		
Rank	1	15	25	20	20	1	25	25		
	STAY	DOC	CW	YG	MARB	REA	API	TI		
EPD	11.9	12.2	27.6	-0.42	0.66	0.88	171.8	101.5		
Rank	85	45	55	35	4	45	10	4		
	BW	ADJ. WW	ADJ. YW	ADJ. IMF	ADJ. BF	ADJ. REA	FRAME	ADG	FEED CONV	RFI
Value	71	666	1233	3.15	0.28	14.45	6-	2.68	8.29	0.41
Ratio	91	100	103	90	133	104	-	79	72	-



About the Red Rock Sons *The American Simmental Association has received cases of a genetic defect reported from the membership called Hydrops. Hydrops is a maternal defect discovered in the sire of Bridle Bit Red Rock G9124. At this time we encourage buyers to use Red Rock sons as terminal sires only. The ASA is working hard with the University of Nebraska to develop a DNA test for these animals. Please give Chad a call if you have any questions 719-324-0564.*

63

FOCR MR M411

ND Red || Homo Polled PB SM
1/12/2024 M411 ASA# 4343896

WS ALL ABOARD B80 HOOK'S FLAME 42F
BRIDLE BIT RED ROCK G9124 FOCR MISS K205
BRIDLE BIT MISS A327 FOCR MISS H07

	CE	BW	WW	YW	ADG	MCE	MILK	MWW		
EPD	14.0	1.4	109.8	170.0	0.38	8.1	26.4	81.2		
Rank	20	55	1	1	2	20	25	1		
	STAY	DOC	CW	YG	MARB	REA	API	TI		
EPD	4.1	13.7	55.1	-0.34	0.61	0.96	150.6	110.8		
Rank	99	30	3	65	10	30	25	1		
	BW	ADJ. WW	ADJ. YW	ADJ. IMF	ADJ. BF	ADJ. REA	FRAME	ADG	FEED CONV	RFI
Value	81	741	1321	4.3	0.2	13.24	7-	3.12	6.87	-1.29
Ratio	110	112	111	123	95	95	-	92	94	-



BRIDLE BIT MR M4129 || Sells as Lot 65.

64

FOCR MR M426

ND Red || Homo Polled 3/4 SM 1/8 AN 1/8 AR
1/20/2024 M426 ASA# 4343911

WS ALL ABOARD B80 WS PRIME BEEF Z8
BRIDLE BIT RED ROCK G9124 BRIDLE BIT MISS D660
BRIDLE BIT MISS A327 BRIDLE BIT MISS X076

	CE	BW	WW	YW	ADG	MCE	MILK	MWW		
EPD	16.8	-3.0	75.1	107.8	0.20	8.9	25.2	62.6		
Rank	15	10	60	75	90	25	40	50		
	STAY	DOC	CW	YG	MARB	REA	API	TI		
EPD	13.4	10.5	25.7	-0.30	0.53	0.68	148.5	88.2		
Rank	65	80	80	25	30	45	30	30		
	BW	ADJ. WW	ADJ. YW	ADJ. IMF	ADJ. BF	ADJ. REA	FRAME	ADG	FEED CONV	RFI
Value	86	696	1185	3.51	0.28	13.65	6-	3.10	7.06	-0.27
Ratio	108	105	99	100	133	98	-	92	91	-



65

BRIDLE BIT MR M4129

ND Red || Homo Polled PB SM
3/4/2024 M4129 ASA# 4353398

DCR MR HARD IMPACT H69 WS OUTCROSS C164
DCR MR KILLIAN K70 BRIDLE BIT MISS F898
DCR MISS IMPERIAL H95 BRIDLE BIT MISS Z226

	CE	BW	WW	YW	ADG	MCE	MILK	MWW		
EPD	16.3	-3.6	83.8	112.7	0.18	9.3	23.4	65.2		
Rank	10	2	35	60	90	10	50	40		
	STAY	DOC	CW	YG	MARB	REA	API	TI		
EPD	17.5	12.5	20.2	-0.46	0.06	0.83	145.8	86.7		
Rank	30	40	80	20	75	55	35	30		
	BW	ADJ. WW	ADJ. YW	ADJ. IMF	ADJ. BF	ADJ. REA	FRAME	ADG	FEED CONV	RFI
Value	84	719	1135	3.1	0.16	13.97	5+	2.86	6.15	-3.34
Ratio	102	107	95	80	76	100	-	85	105	-



66

BRIDLE BIT MR M440

ND Red || Homo Polled PB SM
2/10/2024 M440 ASA# 4353305

DCR MR HARD IMPACT H69 LBRS GENESIS G69
DCR MR KILLIAN K70 BRIDLE BIT MISS J133
DCR MISS IMPERIAL H95 BRIDLE BIT MISS F806

	CE	BW	WW	YW	ADG	MCE	MILK	MWW		
EPD	15.1	-2.6	94.3	140.6	0.29	7.1	23.8	70.8		
Rank	15	4	10	15	25	30	45	20		
	STAY	DOC	CW	YG	MARB	REA	API	TI		
EPD	13.8	16.2	52.7	-0.30	0.61	1.14	171.2	105.6		
Rank	70	10	4	80	10	10	10	2		
	BW	ADJ. WW	ADJ. YW	ADJ. IMF	ADJ. BF	ADJ. REA	FRAME	ADG	FEED CONV	RFI
Value	76	650	1199	3.26	0.15	14.3	5+	3.66	5.84	0.22
Ratio	96	96	100	84	71	102	-	108	110	-





67 BRIDLE BIT MR M436

ND Red || Homo Polled 3/4 SM 1/4 AR
2/9/2024 M436 ASA# 4353301

DCR MR HARD IMPACT H69 BRIDLE BIT BEST MAN F839
DCR MR KILLIAN K70 BRIDLE BIT MISS H039
DCR MISS IMPERIAL H95 BRIDLE BIT MISS D696

	CE	BW	WW	YW	ADG	MCE	MILK	MWW		
EPD	14.1	-1.5	79.3	105.8	0.17	6.7	19.0	58.5		
Rank	35	25	45	80	99	55	90	70		
	STAY	DOC	CW	YG	MARB	REA	API	TI		
EPD	15.6	17.3	24.5	-0.36	0.26	0.72	132.4	80.9		
Rank	45	5	80	10	75	40	55	55		
	BW	ADJ. WW	ADJ. YW	ADJ. IMF	ADJ. BF	ADJ. REA	FRAME	ADG	FEED CONV	RFI
Value	83	624	1125	3.25	0.16	13.31	5-	3.16	6.75	0.38
Ratio	102	93	94	84	76	95	-	94	96	-



68 BRIDLE BIT MR M4122

ND Red || Homo Polled PB SM
2/29/2024 M4122 ASA# 4353391

CDI SECRET AGENT 407C HOOK'S XPECTATION 36X
REDHILL BURLEY 99J HSF MISS XPECTION 42A 51J
REDHILL W107 153X 257B HSF MS ROLLER 107U 42A

	CE	BW	WW	YW	ADG	MCE	MILK	MWW		
EPD	15.7	-1.4	68.6	102.4	0.21	7.5	30.0	64.2		
Rank	10	15	90	85	75	25	10	45		
	STAY	DOC	CW	YG	MARB	REA	API	TI		
EPD	21.4	10.9	20.9	-0.37	0.19	0.71	152.0	79.2		
Rank	4	60	80	55	50	80	25	55		
	BW	ADJ. WW	ADJ. YW	ADJ. IMF	ADJ. BF	ADJ. REA	FRAME	ADG	FEED CONV	RFI
Value	74	649	1110	2.1	0.17	13.72	5	2.62	8.05	0.73
Ratio	94	96	93	54	81	98	-	78	76	-



REDHILL BURLEY 99J || Sire of Lot 68.



69 BRIDLE BIT MR M483

Homo Black || Homo Polled 3/4 SM 1/4 AN
2/19/2024 M483 ASA# 4353348

HOOK'S BEACON 56B HOOK'S BLACK HAWK 50B
KBHR CIMARRON F151 BRIDLE BIT MISS F848
BAR CK MS X38 106Z BRIDLE BIT MISS D686

	CE	BW	WW	YW	ADG	MCE	MILK	MWW		
EPD	18.5	-6.4	57.4	84.6	0.17	10.7	20.6	49.3		
Rank	4	1	99	99	99	10	80	95		
	STAY	DOC	CW	YG	MARB	REA	API	TI		
EPD	19.7	9.8	21.4	-0.34	0.53	0.92	163.5	81.8		
Rank	10	85	90	15	30	15	15	55		
	BW	ADJ. WW	ADJ. YW	ADJ. IMF	ADJ. BF	ADJ. REA	FRAME	ADG	FEED CONV	RFI
Value	70	643	1127	3.28	0.08	14.11	5+	3.44	7.23	4.15
Ratio	85	95	94	85	38	101	-	102	88	-



BRIDLE BIT MR M483 || Sells as Lot 69.

70

BRIDLE BIT MR M488

Homo Black || Homo Polled PB SM
2/19/2024 M488 ASA# 4353353

HOOK'S BEACON 56B BRIDLE BIT GPS H078
KBHR CIMARRON F151 BRIDLE BIT MISS K295
BAR CK MS X38 106Z BRIDLE BIT MISS H054

	CE	BW	WW	YW	ADG	MCE	MILK	MWW		
EPD	16.3	-3.7	74.2	110.7	0.23	10.9	20.8	57.8		
Rank	10	2	70	65	65	2	70	75		
	STAY	DOC	CW	YG	MARB	REA	API	TI		
EPD	20.8	6.1	41.5	-0.18	0.46	0.66	171.7	90.3		
Rank	5	95	15	99	15	90	10	20		
	BW	ADJ. WW	ADJ. YW	ADJ. IMF	ADJ. BF	ADJ. REA	FRAME	ADG	FEED CONV	RFI
Value	68	697	1146	3.28	0.23	12.53	5+	2.65	7.85	-0.04
Ratio	89	103	96	85	110	89	-	79	79	-



KBHR CIMARRON F151 || Sire of Lots 69-71 .

71

BRIDLE BIT MR M479

Homo Black || Homo Polled PB SM
2/18/2024 M479 ASA# 4353344

HOOK'S BEACON 56B MR NLC UPGRADE U8676
KBHR CIMARRON F151 BRIDLE BIT MISS C562
BAR CK MS X38 106Z BRIDLE BIT MISS W923

	CE	BW	WW	YW	ADG	MCE	MILK	MWW		
EPD	11.9	1.7	73.4	105.1	0.20	8.5	21.8	58.5		
Rank	45	60	75	80	80	15	60	70		
	STAY	DOC	CW	YG	MARB	REA	API	TI		
EPD	15.7	11.5	35.1	-0.39	0.37	0.86	141.0	81.2		
Rank	50	55	30	45	25	50	40	50		
	BW	ADJ. WW	ADJ. YW	ADJ. IMF	ADJ. BF	ADJ. REA	FRAME	ADG	FEED CONV	RFI
Value	92	681	1140	2.97	0.11	14.22	6-	-	-	-
Ratio	111	101	95	77	52	101	-	-	-	-



BRIDLE BIT BLACKOUT K249

Homo Black || Homo Polled 5/8 SM 3/8 AN
 2/5/2022 K249 ASA# 4058265

SIRE: **BRIDLE BIT ECLIPSE E744**
 DAM: **BRIDLE BIT MISS F8111**
 MGS: **HOOK'S BLACK HAWK 50B**

CE	BW	WW	YW	MCE	MILK	MWW	STAY
20.8	-4.5	79.9	118.0	11.5	28.6	68.5	19.6
1	3	40	55	3	15	25	10
DOC	CW	YG	MARB	BF	REA	API	TI
15.7	30.8	-0.20	0.49	-0.04	0.58	168.6	92.3
15	65	50	35	40	65	10	20

A heifer safe, maternally focused son of Hook's Eclipse who was an outlier for feed intake data. Here is your chance at some of the very first Blackout sons who will be efficient, heifer safe, and maternally focused. They blend phenotype and genetic superiority and will be crowd favorites.



BRIDLE BIT BLACKOUT K249 || Sire of Lots 72-74.



BRIDLE BIT MR M4124 || Sells as Lot 72.

72 BRIDLE BIT MR M4124

Homo Black || Homo Polled 3/4 SM 1/4 AN
 2/29/2024 M4124 ASA# 4353393

BRIDLE BIT ECLIPSE E744 BRIDLE BIT GPS H078
BRIDLE BIT BLACKOUT K249 **BRIDLE BIT MISS K248**
 BRIDLE BIT MISS F8111 BRIDLE BIT MISS G959

	CE	BW	WW	YW	ADG	MCE	MILK	MWW
EPD	15.4	-1.5	88.3	134.6	0.29	9.0	26.9	71.1
Rank	20	25	15	25	40	20	25	15
	STAY	DOC	CW	YG	MARB	REA	API	TI
EPD	18.0	12.6	43.7	-0.17	0.50	0.59	157.6	93.5
Rank	20	50	30	60	35	65	20	15

	BW	ADJ.WW	ADJ.YW	ADJ.IMF	ADJ.BF	ADJ.REA	FRAME	ADG	FEED CONV	RFI
Value	81	721	1289	4.4	0.24	13.57	5+	3.48	5.23	-2.88
Ratio	105	107	108	114	114	97	-	103	119	-



73 BRIDLE BIT MR M4136

Homo Black || Homo Polled 5/8 SM 3/8 AN
 3/10/2024 M4136 ASA# 4353367

BRIDLE BIT ECLIPSE E744 BRIDLE BIT CALVARY C503
BRIDLE BIT BLACKOUT K249 **BRIDLE BIT MISS F8122**
 BRIDLE BIT MISS F8111 BRIDLE BIT MISS A327

	CE	BW	WW	YW	ADG	MCE	MILK	MWW
EPD	16.2	-2.8	82.1	126.5	0.28	8.9	26.9	67.9
Rank	15	15	35	40	45	25	25	25
	STAY	DOC	CW	YG	MARB	REA	API	TI
EPD	20.6	18.8	18.2	-0.15	0.75	0.28	177.4	97.6
Rank	5	2	95	65	10	99	4	10

	BW	ADJ.WW	ADJ.YW	ADJ.IMF	ADJ.BF	ADJ.REA	FRAME	ADG	FEED CONV	RFI
Value	84	701	1172	3.92	0.2	12.93	6	2.91	6.81	-1.09
Ratio	102	104	98	101	95	92	-	86	95	-



74 BRIDLE BIT MR M4114

Homo Black || Homo Polled 3/4 SM 1/4 AN
 2/27/2024 M4114 ASA# 4353383

BRIDLE BIT ECLIPSE E744 KBHR CIMARRON F151
BRIDLE BIT BLACKOUT K249 **BRIDLE BIT MISS K215**
 BRIDLE BIT MISS F8111 BRIDLE BIT MISS H0124

	CE	BW	WW	YW	ADG	MCE	MILK	MWW
EPD	18.9	-6.5	66.2	92.6	0.17	10.8	23.1	56.1
Rank	3	1	85	95	99	5	60	80
	STAY	DOC	CW	YG	MARB	REA	API	TI
EPD	23.5	10.0	10.8	-0.26	0.35	0.53	164.0	82.3
Rank	1	85	99	35	60	75	10	50

	BW	ADJ.WW	ADJ.YW	ADJ.IMF	ADJ.BF	ADJ.REA	FRAME	ADG	FEED CONV	RFI
Value	70	631	1084	3.49	0.16	13.42	5-	3.01	6.29	-0.77
Ratio	92	94	91	90	76	96	-	89	103	-



75 FOCR MR M428

Homo Black || Homo Polled 3/4 SM 1/4 AN
1/23/2024 M428 ASA# 4343913

WS PROCLAMATION E202

J BAR J NIGHTRIDE 225Z

LBR GENESIS G69

BRIDLE BIT MISS E749

LBR DIANA D69

BRIDLE BIT MISS C558

	CE	BW	WW	YW	ADG	MCE	MILK	MWW		
EPD	15.1	-2.1	76.6	116.1	0.25	7.5	20.1	58.3		
Rank	25	20	55	60	65	45	80	70		
	STAY	DOC	CW	YG	MARB	REA	API	TI		
EPD	17.0	13.8	25.1	-0.16	1.04	0.46	180.9	99.7		
Rank	30	35	80	65	2	85	3	5		
	BW	ADJ. WW	ADJ. YW	ADJ. IMF	ADJ. BF	ADJ. REA	FRAME	ADG	FEED CONV	RFI
Value	80	597	1165	4.32	0.22	13.61	5-	3.35	5.45	-3.41
Ratio	100	90	98	123	105	97	-	99	116	-



FOCR MR M428 || Sells as Lot 75.

76 FOCR MR M416

Homo Black || Homo Polled 3/4 SM 1/4 AN
1/14/2024 M416 ASA# 4343901

WS PROCLAMATION E202

CCR SPARTAN 9124A

LBR GENESIS G69

BRIDLE BIT MISS E730

LBR DIANA D69

BRIDLE BIT MISS U878

	CE	BW	WW	YW	ADG	MCE	MILK	MWW		
EPD	13.1	-0.1	86.7	132.0	0.28	6.3	17.6	61.0		
Rank	50	50	20	30	45	65	95	60		
	STAY	DOC	CW	YG	MARB	REA	API	TI		
EPD	12.9	10.7	46.0	0.05	0.72	0.26	152.2	94.1		
Rank	70	75	25	99	15	99	25	15		
	BW	ADJ. WW	ADJ. YW	ADJ. IMF	ADJ. BF	ADJ. REA	FRAME	ADG	FEED CONV	RFI
Value	84	668	1226	3.7	0.17	11.12	7-	2.09	9.99	-1.56
Ratio	105	101	103	105	81	80	-	62	46	-



LBR GENESIS G69|| Sire of Lots 75-76.

77 BRIDLE BIT MR M4150

Hetero Black || Homo Polled PB SM
3/26/2024 M4150 ASA# 4353415

WS PROCLAMATION E202

COLORADO BRIDLE BIT E752

KBHR CHISUM H160

BRIDLE BIT MISS H094

KBHR E147

BRIDLE BIT MISS B440

	CE	BW	WW	YW	ADG	MCE	MILK	MWW		
EPD	15.1	-1.6	81.5	121.9	0.25	9.6	29.7	70.4		
Rank	15	10	40	40	50	10	10	20		
	STAY	DOC	CW	YG	MARB	REA	API	TI		
EPD	17.0	14.8	37.2	-0.32	0.70	0.82	175.6	99.6		
Rank	35	20	25	75	3	60	5	5		
	BW	ADJ. WW	ADJ. YW	ADJ. IMF	ADJ. BF	ADJ. REA	FRAME	ADG	FEED CONV	RFI
Value	76	682	1158	4.45	0.23	12.84	5+	3.59	5.15	-1.38
Ratio	94	101	97	115	110	92	-	106	120	-



BRIDLE BIT MR M4150 || Sells as Lot 77.



KBHR CHISUM H160 || Sire of Lots 78-81.

78 BRIDLE BIT MR M4151
 Homo Black || Homo Polled 3/27/2024 M4151 ASA# 4353416

WS PROCLAMATION E202 KOCH BIG TIMBER 685D
 KBHR CHISUM H160 BRIDLE BIT MISS G922
 KBHR E147 BRIDLE BIT MISS D643

	CE	BW	WW	YW	ADG	MCE	MILK	MWW		
EPD	14.4	-1.8	77.0	118.9	0.26	9.3	29.2	67.7		
Rank	20	10	60	50	45	10	15	30		
	STAY	DOC	CW	YG	MARB	REA	API	TI		
EPD	19.4	13.4	39.4	-0.31	0.47	1.02	166.5	91.6		
Rank	15	30	20	80	15	20	10	20		
	BW	ADJ. WW	ADJ. YW	ADJ. IMF	ADJ. BF	ADJ. REA	FRAME	ADG	FEED CONV	RFI
Value	78	656	1124	3.95	0.18	14.9	5	3.44	5.90	0.65
Ratio	94	97	94	102	86	106	-	102	109	-



79 BRIDLE BIT MR M4102
 Homo Black || Homo Polled 2/23/2024 M4102 3/4 SM 1/4 AN ASA# 4353371

WS PROCLAMATION E202 GIBBS 5063C HOME RUN
 KBHR CHISUM H160 BRIDLE BIT MISS F802
 KBHR E147 BRIDLE BIT MISS B444

	CE	BW	WW	YW	ADG	MCE	MILK	MWW		
EPD	9.1	0.7	86.5	133.0	0.29	5.7	26.6	69.8		
Rank	90	65	20	25	40	75	25	20		
	STAY	DOC	CW	YG	MARB	REA	API	TI		
EPD	16.4	12.7	48.9	-0.17	0.60	0.62	147.5	91.4		
Rank	35	50	20	60	25	60	30	20		
	BW	ADJ. WW	ADJ. YW	ADJ. IMF	ADJ. BF	ADJ. REA	FRAME	ADG	FEED CONV	RFI
Value	101	652	1248	3.68	0.13	13.18	6+	3.76	5.94	0.84
Ratio	122	97	104	95	62	94	-	112	108	-



80 BRIDLE BIT MR M4131
 Homo Black || Homo Polled 3/5/2024 M4131 3/4 SM 1/4 AN ASA# 4353365

WS PROCLAMATION E202 GIBBS 5063C HOME RUN
 KBHR CHISUM H160 BRIDLE BIT MISS G940
 KBHR E147 BRIDLE BIT MISS D676

	CE	BW	WW	YW	ADG	MCE	MILK	MWW		
EPD	9.8	-0.2	81.0	125.7	0.28	6.0	25.4	65.9		
Rank	85	50	35	40	45	70	35	35		
	STAY	DOC	CW	YG	MARB	REA	API	TI		
EPD	15.1	12.1	53.3	-0.21	0.37	0.78	132.5	83.5		
Rank	50	60	10	50	55	30	55	45		
	BW	ADJ. WW	ADJ. YW	ADJ. IMF	ADJ. BF	ADJ. REA	FRAME	ADG	FEED CONV	RFI
Value	92	681	1256	3.61	0.26	12	6-	3.80	5.49	-0.61
Ratio	111	101	105	93	124	86	-	113	115	-



81 BRIDLE BIT MR M4105
 Homo Black || Homo Polled 2/23/2024 M4105 3/4 SM 3/16 AN 1/16 AR ASA# 4353374

WS PROCLAMATION E202 J BAR J NIGHTRIDE 225Z
 KBHR CHISUM H160 BRIDLE BIT MISS E760
 KBHR E147 BRIDLE BIT MISS W918

	CE	BW	WW	YW	ADG	MCE	MILK	MWW		
EPD	12.3	-0.9	63.7	96.9	0.21	8.2	25.5	57.4		
Rank	60	35	90	90	90	30	35	75		
	STAY	DOC	CW	YG	MARB	REA	API	TI		
EPD	15.3	16.3	21.1	-0.31	0.53	0.56	139.6	78.8		
Rank	45	10	90	20	30	70	45	65		
	BW	ADJ. WW	ADJ. YW	ADJ. IMF	ADJ. BF	ADJ. REA	FRAME	ADG	FEED CONV	RFI
Value	89	535	1012	3.18	0.09	11.78	5+	2.46	8.11	0.45
Ratio	107	79	85	82	43	84	-	73	75	-





BRIDLE BIT MR M404 || Sells as Lot 82.

82

BRIDLE BIT MR M404

Homo Black || Homo Polled 5/8 SM 3/8 AN
 1/30/2024 M404 ASA# 4353269

BRIDLE BIT ECLIPSE E744 HOOK'S EAGLE 6E
HOOK'S GALILEO 210G **BRIDLE BIT MISS J100**
 HOOK'S EVITA 18E BRIDLE BIT MISS D686

	CE	BW	WW	YW	ADG	MCE	MILK	MWW
EPD	15.7	-1.4	93.3	151.0	0.36	8.9	28.9	75.5
Rank	20	30	10	10	10	25	15	5

	STAY	DOC	CW	YG	MARB	REA	API	TI
EPD	19.7	18.6	44.1	-0.35	0.60	1.18	171.5	100.7
Rank	10	3	25	15	25	2	10	4

	BW	ADJ. WW	ADJ. YW	ADJ. IMF	ADJ. BF	ADJ. REA	FRAME	ADG	FEED CONV	RFI
Value	77	676	1187	4.03	0.17	14.24	5+	3.87	5.42	-0.62
Ratio	97	100	99	104	81	102	-	115	116	-



HOOK'S GALILEO 210G || Sire of Lot 82.



FOCR MR M461 || Sells as Lot 83.

83 FOCR MR M461
 Hetero Black || Homo Polled 5/8 SM 3/8 AR
 3/1/2024 M461 ASA# 4343934

COLORADO BRIDLE BIT E752 H2R PROFITBUILDER B403
BRIDLE BIT MR G9112 **BRIDLE BIT MISS E723**
 BRIDLE BIT MISS B440 BRIDLE BIT MISS T754

	CE	BW	WW	YW	ADG	MCE	MILK	MWW		
EPD	13.8	-2.3	69.4	108.3	0.24	7.1	24.1	58.8		
Rank	40	20	80	75	70	50	50	70		
	STAY	DOC	CW	YG	MARB	REA	API	TI		
EPD	17.0	11.7	21.6	-0.08	0.53	0.29	148.9	82.9		
Rank	30	65	90	85	30	99	30	50		
	BW	ADJ. WW	ADJ. YW	ADJ. IMF	ADJ. BF	ADJ. REA	FRAME	ADG	FEED CONV	RFI
Value	81	650	1164	3.1	0.25	13.7	5+	3.91	5.78	1.94
Ratio	100	98	97	88	119	98	-	116	111	-



COLORADO BRIDLE BIT E752 || Sire of Lot 84.

84 BRIDLE BIT MR M447
 Homo Black || Homo Polled 3/4 SM 1/4 AN
 2/11/2024 M447 ASA# 4353312

HOOK'S BOZEMAN 8B J BAR J NIGHTRIDE 225Z
COLORADO BRIDLE BIT E752 **BRIDLE BIT MISS E778**
 BRIDLE BIT MISS B452 BRIDLE BIT MISS B403

	CE	BW	WW	YW	ADG	MCE	MILK	MWW		
EPD	21.3	-3.0	63.3	89.7	0.16	12.4	28.3	60.0		
Rank	1	10	90	95	99	1	15	65		
	STAY	DOC	CW	YG	MARB	REA	API	TI		
EPD	18.5	16.2	23.2	-0.22	0.49	0.51	157.1	80.3		
Rank	15	10	85	45	35	75	20	60		
	BW	ADJ. WW	ADJ. YW	ADJ. IMF	ADJ. BF	ADJ. REA	FRAME	ADG	FEED CONV	RFI
Value	74	587	976	3.86	0.19	12.5	4+	3.18	5.93	-0.79
Ratio	89	87	82	100	90	89	-	94	108	-



BRIDLE BIT MR M4148 || Sells as Lot 85.

85 BRIDLE BIT MR M4148
 Homo Black || Homo Polled PB SM
 3/24/2024 M4148 ASA# 4353413

TJ GOLD 274G HOOK'S EAGLE 6E
BRIDLE BIT MR J174 **BRIDLE BIT MISS J1105**
 BRIDLE BIT MISS B440 BRIDLE BIT MISS B452

	CE	BW	WW	YW	ADG	MCE	MILK	MWW		
EPD	13.8	-1.4	79.2	120.7	0.26	7.2	23.1	62.7		
Rank	25	15	50	45	45	30	50	50		
	STAY	DOC	CW	YG	MARB	REA	API	TI		
EPD	16.4	16.1	12.6	-0.35	0.68	0.78	171.4	97.1		
Rank	45	10	99	65	4	65	10	10		
	BW	ADJ. WW	ADJ. YW	ADJ. IMF	ADJ. BF	ADJ. REA	FRAME	ADG	FEED CONV	RFI
Value	88	732	1183	5.25	0.22	13.08	5+	3.09	6.45	0.02
Ratio	110	109	99	136	105	93	-	92	100	-



86 BRIDLE BIT MR M4139

Hetero Black || Homo Polled PB SM
3/16/2024 M4139 ASA# 4353404

TJ GOLD 274G HOOK'S EAGLE 6E
BRIDLE BIT MR J174 BRIDLE BIT MISS J186
BRIDLE BIT MISS B440 BRIDLE BIT MISS B452

	CE	BW	WW	YW	ADG	MCE	MILK	MWW		
EPD	14.8	-2.9	73.5	108.9	0.22	8.2	21.5	58.2		
Rank	15	4	75	70	70	20	65	75		
	STAY	DOC	CW	YG	MARB	REA	API	TI		
EPD	16.9	17.7	14.1	-0.34	0.34	0.89	154.5	86.5		
Rank	35	3	95	65	25	45	20	30		
	BW	ADJ. WW	ADJ. YW	ADJ. IMF	ADJ. BF	ADJ. REA	FRAME	ADG	FEED CONV	RFI
Value	80	668	1097	3.73	0.2	14.07	5	3.04	6.33	-0.34
Ratio	100	99	92	96	95	100	-	90	102	-



87 BRIDLE BIT MR M492

Homo Black || Homo Polled 5/8 SM 3/8 AN
2/20/2024 M492 ASA# 4353357

44 BRAGGING RIGHTS 4372 BRIDLE BIT RESOURCE G9117
HOOK'S JOURNEY 7J LF KAYLEE
HOOK'S EVITA 18E TJ 70A

	CE	BW	WW	YW	ADG	MCE	MILK	MWW		
EPD	20.9	-6.2	57.1	88.6	0.20	12.5	24.5	52.2		
Rank	1	1	99	99	90	1	45	90		
	STAY	DOC	CW	YG	MARB	REA	API	TI		
EPD	20.9	12.6	22.3	-0.18	0.50	0.73	167.0	80.7		
Rank	4	50	85	55	35	40	10	55		
	BW	ADJ. WW	ADJ. YW	ADJ. IMF	ADJ. BF	ADJ. REA	FRAME	ADG	FEED CONV	RFI
Value	66	616	1112	3.38	0.37	12.86	4+	2.83	7.87	2.42
Ratio	87	91	93	87	176	92	-	84	78	-



HOOK'S JOURNEY 7J || Sire of Lot 87.

88 FOCR MR M446

Hetero Black || Homo Polled 5/8 SM 7/32 AN 5/32 AR
2/9/2024 M446 ASA# 4343929

KBHR CIMARRON F151 HOOK'S EAGLE 6E
BRIDLE BIT MR H0132 FOCR MISS G905
BRIDLE BIT MISS C544 FOCR Y101

	CE	BW	WW	YW	ADG	MCE	MILK	MWW		
EPD	9.8	1.0	86.4	136.2	0.31	5.1	20.7	63.8		
Rank	85	70	20	20	30	80	80	45		
	STAY	DOC	CW	YG	MARB	REA	API	TI		
EPD	15.9	9.7	39.7	-0.23	0.27	0.76	129.4	82.8		
Rank	40	85	40	40	70	35	60	50		
	BW	ADJ. WW	ADJ. YW	ADJ. IMF	ADJ. BF	ADJ. REA	FRAME	ADG	FEED CONV	RFI
Value	82	686	1195	3.55	0.22	13.41	5+	3.04	7.40	0.32
Ratio	103	103	100	101	105	96	-	90	86	-



FOCR MR M446 || Sells as Lot 88.



89

BRIDLE BIT MR M4132

Homo Black || Homo Polled PB SM
 3/7/2024 M4132 ASA# 4353366

NLC EDGAR 1E
CAMP CROCKETT J1098
 CAMP MRS E745

HOOK'S ENCORE 65E
BRIDLE BIT MISS G996
 BRIDLE BIT MISS B452

	CE	BW	WW	YW	ADG	MCE	MILK	MWW		
EPD	14.1	-0.4	75.0	115.0	0.25	9.1	29.1	66.6		
Rank	20	25	65	55	50	10	15	35		
	STAY	DOC	CW	YG	MARB	REA	API	TI		
EPD	20.2	14.5	10.3	-0.32	0.29	0.52	154.0	83.9		
Rank	10	20	99	75	35	99	25	40		
	BW	ADJ. WW	ADJ. YW	ADJ. IMF	ADJ. BF	ADJ. REA	FRAME	ADG	FEED CONV	RFI
Value	92	720	1265	4.21	0.22	15.15	6+	2.69	7.10	-2.34
Ratio	113	107	106	109	105	108	-	80	90	-

BRIDLE BIT MR M4132 || Sells as Lot 89.



90

BRIDLE BIT MR M4149

Homo Black || Homo Polled PB SM
 3/25/2024 M4149 ASA# 4353414

NLC EDGAR 1E
CAMP CROCKETT J1098
 CAMP MRS E745

CLRS HOMELAND 327H
BRIDLE BIT MISS K2121
 BRIDLE BIT MISS G996

	CE	BW	WW	YW	ADG	MCE	MILK	MWW		
EPD	13.9	-1.4	68.9	103.6	0.22	9.5	25.8	60.2		
Rank	25	15	90	80	70	10	30	65		
	STAY	DOC	CW	YG	MARB	REA	API	TI		
EPD	18.8	9.8	7.9	-0.26	0.34	0.39	152.4	82.0		
Rank	20	75	99	90	25	99	25	45		
	BW	ADJ. WW	ADJ. YW	ADJ. IMF	ADJ. BF	ADJ. REA	FRAME	ADG	FEED CONV	RFI
Value	78	657	1109	3.55	0.16	13.16	5-	2.64	6.74	-1.30
Ratio	102	97	93	92	76	94	-	78	96	-



2025 PUREBRED SIMMENTAL PERCENTILE TABLE

%	API	TI	CE	BW	VV	ADG	YW	MCE	MLK	MWW	STY	DOC	CWT	YG	MRB	BF	REA
1	185.79	105.06	18.70	-3.70	103.50	0.38	161.80	11.20	34.10	80.30	22.60	19.20	57.80	-0.56	0.76	-0.12	1.34
2	179.45	102.27	17.80	-3.10	100.10	0.36	155.90	10.60	32.70	78.40	21.60	18.20	53.50	-0.54	0.68	-0.11	1.27
3	175.43	100.43	17.20	-2.60	98.20	0.35	152.20	10.20	31.90	77.00	21.10	17.60	51.10	-0.53	0.64	-0.11	1.23
4	172.89	99.07	16.70	-2.30	96.80	0.34	149.70	9.90	31.30	76.00	20.60	17.20	49.20	-0.52	0.60	-0.11	1.20
5	170.43	97.89	16.30	-2.10	95.50	0.34	147.60	9.70	30.80	75.20	20.30	16.90	47.50	-0.51	0.57	-0.10	1.18
10	161.80	93.81	15.10	-1.30	91.40	0.31	140.40	8.80	29.10	72.40	19.30	15.60	42.40	-0.48	0.47	-0.10	1.10
15	156.22	91.15	14.30	-0.70	88.60	0.30	135.50	8.20	27.90	70.40	18.60	14.80	39.20	-0.47	0.40	-0.09	1.05
20	151.51	89.08	13.70	-0.30	86.40	0.29	131.70	7.70	26.90	68.90	18.10	14.20	36.80	-0.45	0.35	-0.09	1.01
25	147.50	87.18	13.20	0.00	84.50	0.28	128.40	7.40	26.10	67.40	17.60	13.60	34.80	-0.44	0.31	-0.09	0.98
30	143.94	85.54	12.80	0.30	82.80	0.27	125.40	7.00	25.40	66.20	17.20	13.20	33.00	-0.43	0.27	-0.08	0.96
35	140.68	84.09	12.40	0.60	81.30	0.26	122.80	6.70	24.80	65.00	16.80	12.70	31.40	-0.42	0.24	-0.08	0.93
40	137.59	82.70	12.10	0.90	80.00	0.25	120.20	6.40	24.20	63.90	16.40	12.30	30.00	-0.41	0.21	-0.08	0.91
45	134.81	81.36	11.70	1.10	78.80	0.25	118.00	6.10	23.60	62.80	16.00	11.90	28.70	-0.40	0.18	-0.08	0.88
50	132.14	80.11	11.40	1.40	77.60	0.24	115.90	5.80	23.00	61.70	15.50	11.60	27.30	-0.39	0.16	-0.07	0.86
55	129.42	78.89	11.00	1.60	76.40	0.23	113.80	5.60	22.40	60.60	15.10	11.20	26.00	-0.37	0.14	-0.07	0.84
60	126.82	77.67	10.70	1.80	75.20	0.23	111.60	5.30	21.80	59.50	14.60	10.80	24.70	-0.36	0.12	-0.07	0.82
65	124.15	76.39	10.30	2.00	74.00	0.22	109.40	5.00	21.20	58.50	14.10	10.40	23.40	-0.35	0.09	-0.07	0.80
70	121.64	75.20	9.90	2.30	72.80	0.21	107.20	4.70	20.50	57.40	13.60	9.90	22.00	-0.34	0.07	-0.06	0.77
75	118.97	74.03	9.50	2.50	71.40	0.21	104.90	4.40	19.80	56.30	13.10	9.40	20.70	-0.33	0.05	-0.06	0.75
80	116.45	72.80	9.00	2.80	70.00	0.20	102.30	4.10	19.10	55.20	12.50	8.80	19.20	-0.31	0.03	-0.06	0.72
85	113.67	71.42	8.40	3.10	68.30	0.19	99.50	3.70	18.30	54.00	11.90	8.10	17.50	-0.29	0.00	-0.05	0.69
90	110.55	69.72	7.60	3.60	66.30	0.18	95.80	3.20	17.20	52.50	11.10	7.10	15.40	-0.27	-0.03	-0.05	0.65
95	106.32	67.44	6.30	4.30	63.20	0.16	90.70	2.40	15.80	50.40	10.20	5.60	12.30	-0.23	-0.08	-0.04	0.58
Avg	132.14	80.11	11.40	1.40	77.60	0.24	115.90	5.80	23.00	61.70	15.50	11.60	27.30	-0.39	0.16	-0.07	0.86

2025 HYBRID PERCENTILE TABLE

%	API	TI	CE	BW	VV	ADG	YW	MCE	MLK	MWW	STY	DOC	CWT	YG	MRB	BF	REA
1	186.70	103.61	20.80	-5.60	101.30	0.40	162.40	12.50	35.00	80.20	21.90	20.30	66.50	-0.48	1.04	-0.10	1.22
2	179.85	101.05	19.70	-4.90	98.10	0.38	157.20	11.80	33.60	78.20	21.10	19.10	61.80	-0.45	0.93	-0.09	1.16
3	175.64	99.32	19.00	-4.40	96.00	0.37	153.60	11.40	32.70	76.80	20.50	18.40	59.00	-0.43	0.88	-0.09	1.11
4	172.75	98.14	18.50	-4.00	94.50	0.36	150.90	11.00	32.10	75.70	20.10	17.90	57.00	-0.42	0.83	-0.08	1.08
5	170.23	97.10	18.10	-3.70	93.40	0.36	148.70	10.80	31.60	74.90	19.80	17.60	55.30	-0.41	0.80	-0.08	1.05
10	161.95	93.77	16.80	-2.80	89.30	0.33	141.70	9.90	29.80	72.00	18.70	16.30	49.80	-0.37	0.69	-0.07	0.96
15	156.59	91.39	15.90	-2.20	86.60	0.32	136.80	9.30	28.60	70.00	18.00	15.50	46.20	-0.34	0.62	-0.07	0.90
20	152.35	89.48	15.20	-1.70	84.50	0.31	132.90	8.80	27.60	68.40	17.40	14.80	43.40	-0.32	0.57	-0.06	0.86
25	148.81	87.86	14.70	-1.30	82.60	0.30	129.80	8.40	26.90	67.10	16.90	14.30	41.20	-0.30	0.52	-0.06	0.82
30	145.53	86.32	14.20	-1.00	81.00	0.29	126.80	8.00	26.20	66.00	16.40	13.80	39.20	-0.28	0.48	-0.05	0.79
35	142.41	84.90	13.70	-0.60	79.50	0.28	124.10	7.70	25.60	64.90	15.90	13.40	37.40	-0.26	0.45	-0.05	0.76
40	139.38	83.54	13.30	-0.40	78.20	0.27	121.70	7.40	25.00	63.80	15.50	13.00	35.70	-0.25	0.42	-0.05	0.73
45	136.41	82.25	12.90	-0.10	76.80	0.27	119.30	7.10	24.40	62.80	15.10	12.60	34.10	-0.23	0.39	-0.04	0.70
50	133.49	80.95	12.50	0.20	75.50	0.26	116.90	6.80	23.80	61.80	14.60	12.30	32.50	-0.21	0.36	-0.04	0.67
55	130.57	79.61	12.20	0.40	74.20	0.25	114.50	6.50	23.20	60.80	14.20	11.90	31.00	-0.20	0.33	-0.03	0.65
60	127.64	78.22	11.80	0.70	73.00	0.24	112.10	6.20	22.70	59.70	13.70	11.60	29.60	-0.18	0.30	-0.03	0.62
65	124.61	76.79	11.40	0.90	71.60	0.24	109.80	5.90	22.10	58.70	13.30	11.20	28.00	-0.17	0.27	-0.03	0.59
70	121.48	75.27	11.00	1.20	70.20	0.23	107.30	5.60	21.50	57.50	12.70	10.80	26.50	-0.15	0.24	-0.02	0.56
75	118.00	73.71	10.60	1.50	68.70	0.22	104.70	5.30	20.80	56.30	12.10	10.30	24.80	-0.13	0.21	-0.02	0.53
80	114.24	72.02	10.10	1.80	67.00	0.21	101.90	4.90	20.10	55.00	11.40	9.80	22.80	-0.11	0.18	-0.02	0.50
85	110.23	70.13	9.50	2.20	65.10	0.20	98.40	4.40	19.20	53.50	10.60	9.10	20.60	-0.08	0.15	-0.01	0.46
90	105.50	68.01	8.70	2.70	62.50	0.19	94.10	3.90	18.10	51.70	9.70	8.10	17.90	-0.05	0.11	0.00	0.40
95	98.84	64.98	7.40	3.40	58.70	0.17	87.70	3.00	16.50	49.00	8.20	6.50	13.70	0.00	0.05	0.01	0.32
Avg	133.49	80.95	12.50	0.20	75.50	0.26	116.90	6.80	23.80	61.80	14.60	12.30	32.50	-0.21	0.36	-0.04	0.67



All Terrain Open Heifers



BRIDLE BIT MISS M4109 || Sells as Lot 91.



BRIDLE BIT MISS G948 || Dam of Lots 91-92.

91

BRIDLE BIT MISS M4109

Homo Black || Homo Polled 5/8 SM 3/8 AN
 2/26/2024 M4109 ASA# 4353378

REDHILL 672X X004 231A

COLORADO BRIDLE BIT E752

CLRS HOMELAND 327H

BRIDLE BIT MISS G948

CLRS ALWAYS XCELLENT

BRIDLE BIT MISS X002

	CE	BW	WW	YW	ADG	MCE	MILK	MWW
EPD	11.9	-0.2	89.8	149.3	0.37	7.6	27.1	72.0
Rank	65	50	15	10	10	40	25	15
	STAY	DOC	CW	YG	MARB	REA	API	TI
EPD	18.0	11.1	46.7	-0.31	0.62	1.03	161.0	96.9
Rank	20	70	20	20	20	10	15	10

	BW	ADJ. WW	ADJ. YW	ADJ. IMF	ADJ. BF	ADJ. REA	FRAME
Value	88	655	993	5.71	0.27	12.76	6+
Ratio	116	103	105	112	100	106	-



Pick of LOTS 91 AND 92



BRIDLE BIT MISS M469 || Sells as Lot 92.

92

BRIDLE BIT MISS M469

Homo Black || Homo Polled PB SM

2/15/2024 M469 ASA# 4353334

HOOK'S ENCORE 65E COLORADO BRIDLE BIT E752
BRIDLE BIT RESOURCE G9117 **BRIDLE BIT MISS G948**
 BRIDLE BIT MISS B452 BRIDLE BIT MISS X002

	CE	BW	WW	YW	ADG	MCE	MILK	MWW
EPD	16.6	0.0	86.0	139.6	0.34	10.4	31.0	73.9
Rank	5	30	25	15	10	3	10	10
	STAY	DOC	CW	YG	MARB	REA	API	TI
EPD	17.5	16.3	44.1	-0.25	0.44	0.85	165.3	94.7
Rank	30	10	15	90	15	50	10	15

	BW	ADJ. WW	ADJ. YW	ADJ. IMF	ADJ. BF	ADJ. REA	FRAME
Value	83	617	923	4.08	0.3	10.72	6+
Ratio				99	111	92	-



BRIDLE BIT RESOURCE G9117 || Sire of Lots 92-94.





BRIDLE BIT MISS M409 ||
Sells as Lot 94.

BRIDLE BIT RESOURCE 9G117 ||
Sire of Lots 93, 94.

BRIDLE BIT RELOAD K229 ||
Full brother of Lot 93.

93 BRIDLE BIT MISS M430
Homo Black || Homo Polled 3/4 SM 1/4 AN
2/8/2024 M430 ASA# 4353295

HOOK'S ENCORE 65E J BAR J NIGHTRIDE 225Z
BRIDLE BIT RESOURCE G9117 **BRIDLE BIT MISS F809**
BRIDLE BIT MISS B452 BRIDLE BIT MISS A343

	CE	BW	WW	YW	ADG	MCE	MILK	MWW
EPD	13.9	-1.9	76.5	123.3	0.29	9.1	29.2	67.3
Rank	40	20	55	45	40	20	15	30
	STAY	DOC	CW	YG	MARB	REA	API	TI
EPD	18.5	10.5	33.3	-0.26	0.60	0.96	159.8	90.2
Rank	15	80	55	35	25	10	15	25
	BW	ADJ. WW	ADJ. YW	ADJ. IMF	ADJ. BF	ADJ. REA	FRAME	
Value	80	653	961	5.07	0.35	12.36	6	
Ratio	104	103	102	99	130	103	-	

94 BRIDLE BIT MISS M409
Homo Black || Homo Polled 3/4 SM 7/32 AN 1/32 AR
2/1/2024 M409 ASA# 4353274

HOOK'S ENCORE 65E J BAR J NIGHTRIDE 225Z
BRIDLE BIT RESOURCE G9117 **BRIDLE BIT MISS E706**
BRIDLE BIT MISS B452 BRIDLE BIT MISS B468

	CE	BW	WW	YW	ADG	MCE	MILK	MWW
EPD	14.4	-0.6	83.3	132.4	0.31	8.9	25.0	66.5
Rank	30	40	30	30	30	25	40	30
	STAY	DOC	CW	YG	MARB	REA	API	TI
EPD	14.3	15.8	56.4	-0.43	0.43	1.35	144.2	89.0
Rank	60	15	10	3	45	1	35	25
	BW	ADJ. WW	ADJ. YW	ADJ. IMF	ADJ. BF	ADJ. REA	FRAME	
Value	78	608	940	4.35	0.3	11.89	6-	
Ratio	101	96	99	85	111	99	-	





BRIDLE BIT MISS M4108 || Sells as Lot 95.



BRIDLE BIT RECHARGE K256
|| Sire of Lot 95.



BRIDLE BIT MISS J176
|| Dam of Lot 95.



BRIDLE BIT MISS M448 || Sells as Lot 96.

95 **BRIDLE BIT MISS M4108**
Homo Black || Homo Polled PB SM
2/25/2024 M4108 ASA# 4353377

BRIDLE BIT RESOURCE G9117 HOOK'S GALILEO 210G
BRIDLE BIT RECHARGE K256 **BRIDLE BIT MISS J176**
BRIDLE BIT MISS G948 BRIDLE BIT MISS Y119

	CE	BW	WW	YW	ADG	MCE	MILK	MWW
EPD	14.0	0.0	95.2	153.7	0.37	9.2	31.2	78.8
Rank	20	30	10	4	3	10	10	3
	STAY	DOC	CW	YG	MARB	REA	API	TI
EPD	15.2	17.5	50.3	-0.34	0.53	0.97	166.1	102.5
Rank	55	3	5	65	10	25	10	3

	BW	ADJ. WW	ADJ. YW	ADJ. IMF	ADJ. BF	ADJ. REA	FRAME
Value	70	665	1027	5.91	0.31	12.02	6-
Ratio	95	105	109	116	115	100	-

96 **BRIDLE BIT MISS M448**
Homo Black || Homo Polled 5/8 SM 3/8 AN
2/12/2024 M448 ASA# 4353313

BRIDLE BIT CALVARY C503 HOOK'S BLACK HAWK 50B
BRIDLE BIT ECLIPSE E744 **BRIDLE BIT MISS F8111**
BRIDLE BIT MISS A327 BRIDLE BIT MISS B452

	CE	BW	WW	YW	ADG	MCE	MILK	MWW
EPD	19.6	-4.5	82.4	125.3	0.27	10.8	28.6	69.7
Rank	2	3	35	40	50	5	15	20
	STAY	DOC	CW	YG	MARB	REA	API	TI
EPD	19.6	16.8	40.0	-0.15	0.66	0.52	178.1	98.1
Rank	10	10	35	65	15	75	4	10

	BW	ADJ. WW	ADJ. YW	ADJ. IMF	ADJ. BF	ADJ. REA	FRAME
Value	75	660	980	4.88	0.3	11.11	6-
Ratio	97	104	104	96	111	93	-





BRIDLE BIT MISS M490 || Sells as Lot 97.

97 **BRIDLE BIT MISS M490**
 Homo Black || Homo Polled PB SM
 2/19/2024 M490 ASA# 4353355

GIBBS 7382E BROAD RANGE KOCH BIG TIMBER 685D
GIBBS 9114G ESSENTIAL **BRIDLE BIT MISS G9103**
 GIBBS 7153E STAR 3136A BRIDLE BIT MISS E706

	CE	BW	WW	YW	ADG	MCE	MILK	MWW
EPD	14.2	-0.8	91.5	150.0	0.37	7.8	26.6	72.3
Rank	20	20	15	10	3	25	25	15
	STAY	DOC	CW	YG	MARB	REA	API	TI
EPD	20.5	15.0	54.6	-0.19	0.62	1.08	181.4	102.5
Rank	10	15	3	99	5	15	3	3
	BW	ADJ. WW	ADJ. YW	ADJ. IMF	ADJ. BF	ADJ. REA	FRAME	
Value	76	636	1044	4.29	0.33	12.28	6-	
Ratio	100	100		100	100	100	-	



BRIDLE BIT MISS M408 || Sells as Lot 98.

98 **BRIDLE BIT MISS M408**
 Homo Black || Homo Polled PB SM
 2/1/2024 M408 ASA# 4353273

GIBBS 7382E BROAD RANGE COLORADO BRIDLE BIT E752
GIBBS 9114G ESSENTIAL **BRIDLE BIT MISS J109**
 GIBBS 7153E STAR 3136A BRIDLE BIT MISS F860

	CE	BW	WW	YW	ADG	MCE	MILK	MWW
EPD	19.4	-4.1	87.2	137.3	0.31	10.5	30.6	74.1
Rank	1	1	25	20	20	3	10	10
	STAY	DOC	CW	YG	MARB	REA	API	TI
EPD	20.3	15.1	47.2	-0.26	0.65	1.15	192.8	105.4
Rank	10	15	10	90	4	10	1	2
	BW	ADJ. WW	ADJ. YW	ADJ. IMF	ADJ. BF	ADJ. REA	FRAME	
Value	63	629	869	5.65	0.24	11.85	5+	
Ratio	85	99	92	111	89	99	-	



BRIDLE BIT MISS M451 || Sells as Lot 99.

99 **BRIDLE BIT MISS M451**
 Homo Black || Homo Polled PB SM
 2/12/2024 M451 ASA# 4353316

GIBBS 9114G ESSENTIAL HOOK'S ENCORE 65E
JC MR PONTIAC D114K **BRIDLE BIT MISS G996**
 FSCR D114 LUCILLE B089XP BRIDLE BIT MISS B452

	CE	BW	WW	YW	ADG	MCE	MILK	MWW
EPD	12.1	-1.6	85.3	133.2	0.30	7.5	29.6	72.1
Rank	45	10	30	25	20	25	15	15
	STAY	DOC	CW	YG	MARB	REA	API	TI
EPD	19.8	16.3	32.7	-0.31	0.46	0.99	166.7	95.7
Rank	10	10	40	80	15	25	10	10
	BW	ADJ. WW	ADJ. YW	ADJ. IMF	ADJ. BF	ADJ. REA	FRAME	
Value	63	578	931	4.18	0.24	12.71	5+	
Ratio	ET	ET	ET	101	89	109	-	



100

BRIDLE BIT MISS M400

Homo Black || Homo Polled 3/4 SM 1/4 AN
1/29/2024 M400 ASA# 4353265

GIBBS 9114G ESSENTIAL
JC MR PONTIAC D114K
FSCR D114 LUCILLE B089XP

TJ GOLD 274G
BRIDLE BIT MISS J111
BRIDLE BIT MISS E784

	CE	BW	WW	YW	ADG	MCE	MILK	MWW
EPD	13.8	0.6	94.7	144.2	0.31	8.1	24.4	71.7
Rank	40	65	10	15	30	35	45	15
	STAY	DOC	CW	YG	MARB	REA	API	TI
EPD	16.6	14.3	45.2	-0.39	0.45	1.12	150.0	94.2
Rank	35	30	25	10	45	3	30	15
	BW	ADJ. WW	ADJ. YW	ADJ. IMF	ADJ. BF	ADJ. REA	FRAME	
Value	78	695	961	4.84	0.2	12.22	6-	
Ratio	105	110	102	95	74	102	-	



BRIDLE BIT MISS M400 || Sells as Lot 100.

101

BRIDLE BIT MISS M405

Homo Black || Homo Polled PB SM
1/31/2024 M405 ASA# 4353270

BRIDLE BIT ECLIPSE E744
HOOK'S GALILEO 210G
HOOK'S EVITA 18E

HOOK'S EAGLE 6E
BRIDLE BIT MISS H072
BRIDLE BIT MISS E745

	CE	BW	WW	YW	ADG	MCE	MILK	MWW
EPD	11.0	0.9	100.4	155.4	0.34	6.9	27.6	77.7
Rank	60	45	3	4	10	35	20	3
	STAY	DOC	CW	YG	MARB	REA	API	TI
EPD	17.7	19.2	55.8	-0.32	0.87	0.90	185.3	111.9
Rank	30	1	2	75	1	40	2	1
	BW	ADJ. WW	ADJ. YW	ADJ. IMF	ADJ. BF	ADJ. REA	FRAME	
Value	88	695	1013	4.44	0.2	11.8	7-	
Ratio	117	110	107	87	74	98	-	



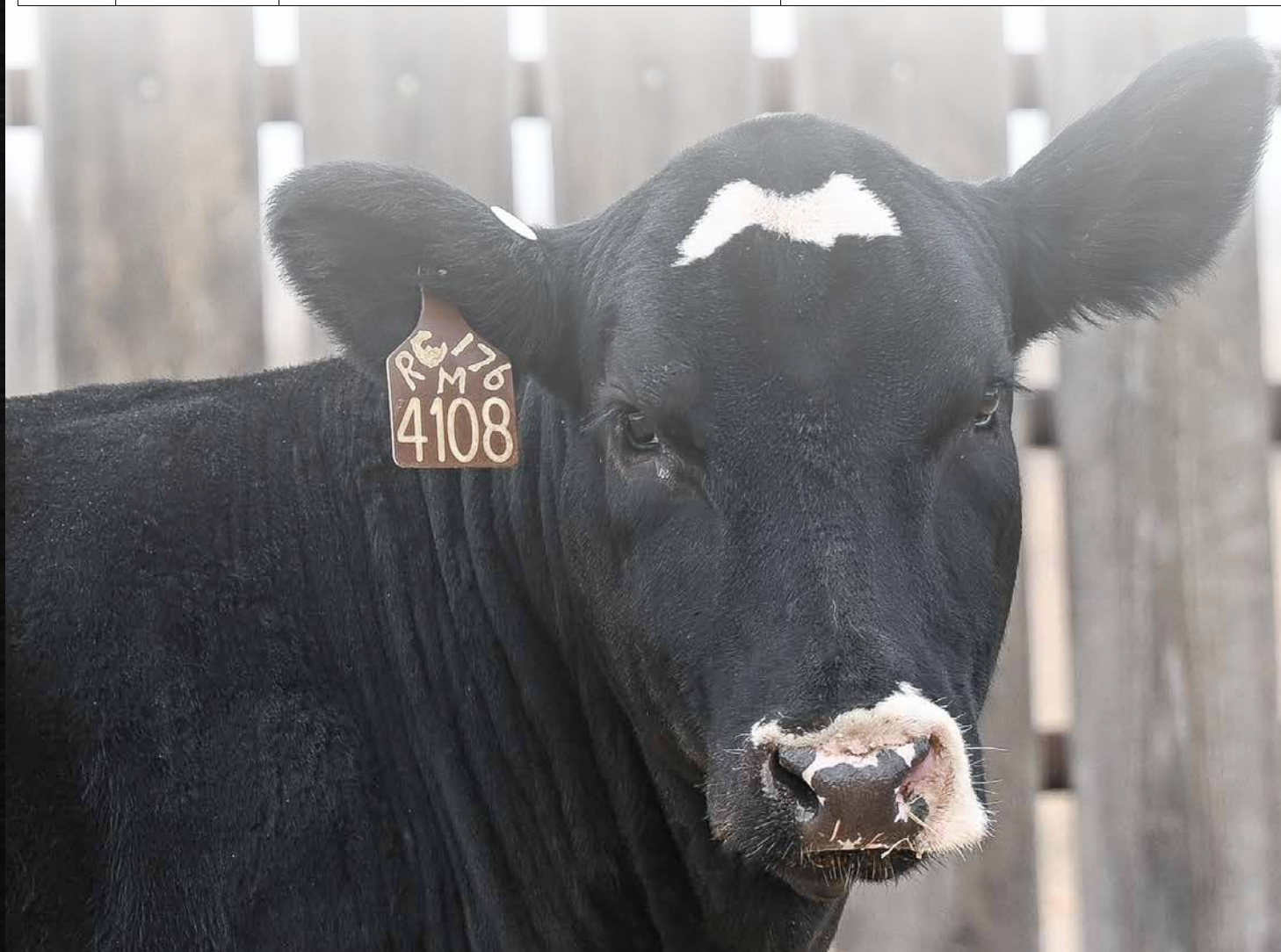
BRIDLE BIT MISS M405 || Sells as Lot 101.



Commercial Open Heifers

Back by popular demand we are once again offering 10 commercial females. All of the females represent Bridle Bit Genetics or popular AI sires across the beef industry. Guaranteed open and fertile.

Lot	Tattoo	Sire	MGS
102	M458	JC MR PONTIAC D114K	CLRS DIVIDEND 405D
103	M4104	BRIDLE BIT BLACKOUT K249	HOOK'S EAGLE 6E
104	M4137	BRIDLE BIT BLACKOUT K249	MR NLC UPGRADE U8676
105	M4156	BRIDLE BIT MR J174	BRIDLE BIT GPS H078
106	M4159	KBHR CHISUM H160	J BAR J NIGHTRIDE 225Z
107	M4110	JC MR PONTIAC D114K	CCR SPARTAN 9124A
108	M4127	CLRS HOMELAND 327H	COLORADO BRIDLE BIT E752
109	M4141	BRIDLE BIT MR J174	J BAR J NIGHTRIDE 225Z
110	M4144	BRIDLE BIT MR J174	BRIDLE BIT GPS H078
111	M4158	CAMP CROCKETT J1098	HOOK'S BLACK HAWK 50B



Around the ranch this year...



Chris Cook Family



Brad Cook Family



Brent Cook Family



Chad and Kristi



Austin and Waylon



Montana and Cristian



Herdsman Rachel



Darin and Edina



Dakota



Rachel and Megan



Pearl and Waylon



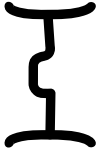
Jerrid and Taylor



Megan Wait



Erroll and the grandkids



BRIDLE BIT SIMMENTALS
PO Box 507, Walsh, CO 81090

Presorted
First Class
US Postage
PAID
SlateGroup

PLEASE JOIN US *on Sunday night*

MARCH 16, FOR DINNER AND AN INFORMATIONAL MEETING.

BRIDLE BIT SIMMENTALS WITH FAR OUT CATTLE RANCH AND MEGAN WAIT

ALL TERRAIN

BULL AND FEMALE SALE

Walsh, Colorado

AFFORDABLE, ROUGH TERRAIN READY
BULLS BACKED BY YEARS OF
PERFORMANCE TESTING, ULTRASOUND,
GENOMICS AND FEED EFFICIENCY DATA.

March
17

BRIDLE BIT SIMMENTALS SALE FACILITY || 1:00 PM (MT)