

# Rydeen Farms

SINCE 1897

27<sup>TH</sup> ANNUAL PRODUCTION SALE

PERFORMANCE + PEACE OF MIND =  
**GENETICS WITH VISION**

**SATURDAY, FEBRUARY 8, 2025**

AT THE FARM, CLEARBROOK, MN | 2:00 PM CST

**SIMMENTAL & SIMANGUS BULLS & FEMALES**

73 Black & Red Yearling Bulls / 7 Aged Bulls [18 months] / 38 Bred & 15 Open Females





# Rydeen Farms

SINCE 1897

## Polled Red & Black Simmental Cattle

Welcome to our 27th Annual Genetics with Vision Bull and Female sale and our 46th year of selling breeding livestock! Thank you for your interest!

It was an interesting spring with warm weather, then lots of rain making planting difficult. The day we did our embryo work was one for the record books. Driving rain all day created so much mud, we weren't sure how we could get the cows rounded up and through the chute. Thankfully, the embryo team was able to persevere, and we were very happy with the conception rate.

Summer brought just enough rain for things to grow. Fall was dry and warm allowing us to harvest our crops early and get tillage done before freeze up.

New last year, we retained ownership of our steers and finished them at a custom feed lot. We were very pleased with how they performed. We have been striving for better carcass quality for years and were able to take advantage of premiums due to excellent yield and grade.

We have some exciting new genetics for you this year. The black side is led by Pontiac, our pick at the Great Lakes Beef Connection sale. His calves show the performance we like to see combined with top tier economic indexes. An outcross pedigree with eye appeal, his calves have been standouts all summer. The Breakaway group is also new. Originally bought to use on heifers, his calves really performed.

Our red side is extremely strong with proven genetics like Electra E88 X Gadget as well as Genome X Gadget as fresh genetics. The popular ABS sire, Copperhead roamed the pastures as our red herd sire and we have an excellent group of his progeny as well.

In addition to an extremely strong group of bred, we have a select group of open heifers and open heifer picks this year. And, new this year we are excited to offer some embryo and semen packages.

The cover art is by Lois' freshman college roommate, Debbie Dahl Aune, Gatzke, MN. She is a very talented, award-winning artist and we are thrilled that she was able to design our cover this year.

We would love to see you in person on sale day, however, if that is not an option, join us on DVAuction or contact one of our sale representatives. Finally, we thank you for your past support and friendship.

We know an investment in genetics is an important decision and we do not take it lightly. Please let us know if there is anything we can do to help you in your selection process. Feel free to stop by the farm before the sale—visitors are always welcome!

Sincerely, The Rydeen Family



Above: The Rydeen Family, Paul, Lois, Inga, Claire, Chad and Justis

Cover art by Debbie Dahl Aune, Gatzke, MN





**RYDEEN FARMS 27<sup>TH</sup> ANNUAL PRODUCTION SALE**

**PERFORMANCE + PEACE OF MIND =  
GENETICS WITH VISION**

**SATURDAY, FEBRUARY 8, 2025 | CLEARBROOK, MN | 2:00 PM CST**

**SALE DAY SCHEDULE**

Noon . . . . . Complimentary Lunch  
2:00 PM . . . . . Sale begins

**SALE DAY PHONES**

Farm. . . . . 218-776-3338  
Paul cell. . . . . 218-280-1916  
Lois cell. . . . . 218-280-8196  
Justis cell . . . . . 218-280-2032

**AUCTIONEER**

Tracy Harl, Wellington, CO (c) . . . . 402-469-3852

**SALE REPRESENTATIVES**

Kirby Goettsch, *Farm & Ranch Guide*. . . 701-255-4905  
Will Bollum, *Cattle Business Weekly*. . . . 507-244-0833  
Corey Wilkins, *Allied Genetic Resources*. . 256-590-2487  
Marty Ropp, *Allied Genetic Resources* . . 406-581-7835  
Tom Hook, *Allied Genetic Resources* . . . 507-829-5283  
Russ Danielson, *American Simmental Assoc.* 701-261-2742

**DVAUCTION - ONLINE BIDDING**

DVAuction Tech Support. . . . . 402-316-5460  
Justin Dikoff, *DVAuction* . . . . . 605-290-0635

**TERMS & CONDITIONS:** This sale is conducted under the standard terms and conditions adopted by the American Simmental Association. If you have any questions, please contact us.

**REGISTRATION PAPERS:** Registration papers will be transferred on all animals. Please inform the clerk of your ASA number.

**FEEDING ARRANGEMENTS:** If you are unable to take your bull home on sale day, we will feed them for free until April 1, 2025. The bulls we feed will be put in with our bulls and treated the same. Successful buyers are responsible for animals purchased sale day and we are not responsible if an animal is injured after purchase. We encourage you to purchase mortality insurance. We will be semen testing bulls left here as able based on schedules. If you are interested in having your animal tested, please let us know.

**TRUCKING:** We will assist buyers in coordinating and making the most economical hauling arrangements.

**LIVESTOCK INSURANCE:** Martin-Trudeau Insurance Agency and Lindfors Insurance Agency will be available sale day.

**ANNOUNCEMENTS:** Announcements made sale day and from the auction block during the sale, take precedence over printed material in the catalog or other printed material associated with the sale. Anyone attending this sale attends at his or her own risk; we are not responsible for accidents, damages or stolen items.

**HERD HEALTH:** We have completed 12 years of whole herd Johnes testing and all dams of sale cattle tested negative in 2024.

**SPRING 2024 BORN BULLS** were vaccinated at birth with Vision 8 and given MultiMin and Triple Defense Paste. They were vaccinated in the spring with InForce and Vista Once. Prior to weaning they were given Vista Once, Covexin 8 and MultiMin. At weaning they were given Covexin 8 and Nasalgen. In December they were given Nasalgen, Valbazen and poured with Clean Up 2. They were repoured in January with Cydectin.

**AGED BULLS** were vaccinated in the spring of 2024 with Vista Once, UltraBac 8. In the fall of 2024, they were vaccinated with UltraBac 8, Vista Once, Valbazen, and poured with Clean Up 2. They were repoured in January with Ivermectin. All aged bulls have passed a breeding soundness exam and have a valid semen test.

**BRED HEIFERS** were vaccinated with UltraBac 8 and ViraShield 6L5, given MultiMin, and LongRange prior to breeding. The bred heifers were ultrasounded on 8/5/2024 and 12/2/2024 for pregnancy. In the fall of 2024 they were vaccinated with UltraBac 8, Nasalgen, ScourBoss 9, and poured with Clean Up 2. Bred females are Bangs vaccinated and have had two doses of ScourBoss.

**OPEN HEIFERS** were vaccinated with Vision 8, and given Triple Defense Paste and MultiMin. They were vaccinated in the spring with Vista Once and InForce. Prior to weaning they were given Vista Once, Ultrabac 8, and MultiMin. At weaning they were given Nasalgen and were poured with Clean Up 2. They were repoured in January with Ivermectin. They are Bangs vaccinated.

**SEMEN RIGHTS:** We will retain 1/3 semen interest on all bulls sold in the sale unless specifically noted.

Catalog designed by  
 **Generation 6**  
marketing  
www.generation6.co



**SALE BROADCASTED ONLINE  
THROUGH DVAUCTION**  
Bid online at [www.dvauction.com](http://www.dvauction.com)





# Pontiac

## Sons

LOTS 1-28



LCDR Impact 134F  
Maternal Grand sire of Lots 1 and 2



KBHR E197  
Maternal Granddam of Lots 1 and 2



*Full Sibs!*  
LOTS 1-2

These two flush brothers put it all together. With Impact and the great E197 cow in their pedigree, they bring performance and breed leading EPDs with style.

### 1

Rydeen Farms

**Homo Black | Homo Polled | PB SM | Yearling Bull**  
BD: 2/24/24 | Tattoo: M21 | ASA#: 4368909

SIRE **JC MR PONTIAC D114K**  
GIBBS 9114G ESSENTIAL  
FSCR D114 LUCILLE B089XP

DAM **RFS MISS J153**  
LCDR IMPACT 134F  
KBHR E197

Genomic Enhanced EPDs

CE	BW	WW	YW	ADG	MCE	Milk	MWW	Stay	Doc	CW	YG	Marb	BF	REA	API	TI
8.5	1.3	92.3	139.8	0.30	5.3	26.9	72.9	16.0	15.9	51.0	-0.32	0.58	-0.039	1.24	158.1	98.5
%																
	50	10	15	20		25	10	50	10	4		5		3	15	5

### RFS M21

Act BW	90
Adj WW	880
Adj YW	1314
Frame Sc	6.0
ADG	2.74
WDA	3.75
Adj SC	36.9

**G+**  
**ATM**

### 2

Rydeen Farms

**Homo Black | Homo Polled | PB SM | Yearling Bull**  
BD: 2/29/24 | Tattoo: M63 | ASA#: 4368949

SIRE **JC MR PONTIAC D114K**  
GIBBS 9114G ESSENTIAL  
FSCR D114 LUCILLE B089XP

DAM **RFS MISS J153**  
LCDR IMPACT 134F  
KBHR E197

Genomic Enhanced EPDs

CE	BW	WW	YW	ADG	MCE	Milk	MWW	Stay	Doc	CW	YG	Marb	BF	REA	API	TI	
13.2	-3.3	75.2	108.7	0.21	8.4	26.9	64.4	20.6	14.6	35.2	-0.31	0.54	-0.033	1.06	171.4	93.1	
%																	
	30	2				15	25	40	5	20	25		10		15	5	15

### RFS M63

Act BW	94
Adj WW	767
Adj YW	1191
Frame Sc	6.0
ADG	2.67
WDA	3.39
Adj SC	36.1

**G+**



# Pontiac

YEARLING BULLS

3

## RFS M12

Rydeen Farms | **Homo Black | Homo Polled | PB SM | Yearling Bull**  
BD: 2/21/24 | Tattoo: M12 | ASA#: 4368900

SIRE **JC MR PONTIAC D114K**  
GIBBS 9114G ESSENTIAL  
FSCR D114 LUCILLE B089XP  
LCDR IMPACT 134F  
DAM **RFS MISS J44**  
LRS MS 3C PASQUE 8037F



Act BW	88
Adj WW	861
Adj YW	1251
Frame Sc	6.0
ADG	2.47
WDA	3.49
Adj SC	37.9

Genomic Enhanced EPDs

EPD	CE	BW	WW	YW	ADG	MCE	Milk	MWW	Stay	Doc	CW	YG	Marb	BF	REA	API	TI
	11.4	2.6	106.9	170.7	0.40	7.0	24.5	77.8	17.9	16.2	55.0	-0.27	0.51	-0.044	1.07	166.9	104.7
%			1	1	1	35	40	3	25	10	2		10		15	10	2

- Adj WWT of 861
- Calving ease out of an Impact daughter
- Ratios BW 104, WW 109, YW 107



Lot 3

## Sons of **JC MR PONTIAC D114K** SIRE TO LOTS 1-28

Pontiac was our pick at the Great Lakes Beef Connection Sale from John Miller's program. This high selling Essential son sires cattle with performance and physical correctness. Mated to our Impact daughters, we produced bulls that boast calving ease with excellent weaning weights in an attractive package. Performance and Peace of Mind. The sons of Pontiac are our largest sire group this year.



4

## RFS M53

Rydeen Farms | **Homo Black | Homo Polled | PB SM | Yearling Bull**  
BD: 2/27/24 | Tattoo: M53 | ASA#: 4368939

SIRE **JC MR PONTIAC D114K**  
GIBBS 9114G ESSENTIAL  
FSCR D114 LUCILLE B089XP  
LCDR IMPACT 134F  
DAM **RFS MISS H50**  
BCLR MISS BALDY E704



Act BW	82
Adj WW	827
Adj YW	1183
Frame Sc	5.7
ADG	2.25
WDA	3.37
Adj SC	37.0

Genomic Enhanced EPDs

EPD	CE	BW	WW	YW	ADG	MCE	Milk	MWW	Stay	Doc	CW	YG	Marb	BF	REA	API	TI
	15.4	0.2	98.9	152.1	0.33	7.1	22.8	72.2	18.8	11.7	34.7	-0.27	0.30	-0.043	0.84	162.0	97.3
%	10	30	3	4	10	30		15	15	50	30		30			10	10

- Adj WWT of 827
- Double digit calving ease
- Dam is a full sib to RFS Herald and RFS Heavy Hitter



Lot 4

5

## RFS M39

Rydeen Farms | **Homo Black | Homo Polled | 3/4 SM 1/4 AN | Yearling Bull**  
BD: 2/26/24 | Tattoo: M39 | ASA#: 4368926

SIRE **JC MR PONTIAC D114K**  
GIBBS 9114G ESSENTIAL  
FSCR D114 LUCILLE B089XP  
LCDR IMPACT 134F  
DAM **RFS MISS J141**  
KS XANDRA X709



Act BW	89
Adj WW	833
Adj YW	1236
Frame Sc	6.0
ADG	2.55
WDA	3.45
Adj SC	37.0

Genomic Enhanced EPDs

EPD	CE	BW	WW	YW	ADG	MCE	Milk	MWW	Stay	Doc	CW	YG	Marb	BF	REA	API	TI
	9.6	0.4	98.7	155.1	0.35	5.4	24.4	73.7	16.5	15.5	54.3	-0.21	0.54	-0.036	0.96	151.3	97.9
%			2	3	10		50	10	30	20	10		25		15	25	5

- Ratios BW 104, WW 106, YW 106
- 3/4 blood with Adj WWT of 833
- Dam is a powerful Impact daughter



Lot 5



# Pontiac



Lot 6

6

RFS M7

Rydeen Farms | Homo Black | Homo Polled | PB SM | Yearling Bull  
BD: 2/21/24 | Tattoo: M7 | ASA#: 4368896

*Full Sibs!*  
**LOTS 6-9**

SIRE **JC MR PONTIAC D114K**  
GIBBS 9114G ESSENTIAL  
FSCR D114 LUCILLE B089XP  
LCDR IMPACT 134F  
DAM **RFS MISS J121**  
LCDR MS GISELLE 8G

Act BW	90
Adj WW	887
Adj YW	1371
Frame Sc	6.0
ADG	3.05
WDA	3.89
Adj SC	38.2

Genomic Enhanced EPDs

	CE	BW	WW	YW	ADG	MCE	Milk	MWW	Stay	Doc	CW	YG	Marb	BF	REA	API	TI
EPD	12.9	1.7	98.5	153.2	0.34	7.6	22.3	71.5	16.8	14.8	38.0	-0.33	0.58	-0.050	1.00	167.9	102.3
%	30		3	3	10	25		15	40	20	20		5		25	10	2



LCDR Ms Giselle 8G



LCDR Impact 134F

*Sons of* **RFS MISS J121**

Our J121 donor is the daughter of one of our favorite donors, Giselle 8G and Impact. She is powerful but exhibits "the look" we want to see in our livestock. Lots 6-9 are flush mates. All have great calving ease with excellent weaning and yearling numbers. It's no surprise that all have the G+ and ATM designation.

## 7

## RFS M153

Rydeen Farms

**Homo Black | Homo Polled | PB SM | Yearling Bull**  
BD: 3/17/24 | Tattoo: M153 | ASA#: 4369038

SIRE **JC MR PONTIAC D114K**  
GIBBS 9114G ESSENTIAL  
FSCR D114 LUCILLE B089XP  
LCDR IMPACT 134F

DAM **RFS MISS J121**  
LCDR MS GISELLE 8G



Act BW	82
Adj WW	778
Adj YW	1195
Frame Sc	5.7
ADG	2.64
WDA	3.32
Adj SC	37.6

Genomic Enhanced EPDs

EPD	CE	BW	WW	YW	ADG	MCE	Milk	MWW	Stay	Doc	CW	YG	Marb	BF	REA	API	TI
	11.9	-0.3	93.2	140.5	0.30	6.9	22.3	68.9	19.2	16.7	44.0	-0.36	0.39	-0.057	1.13	161.9	96.6
%	45	25	10	10	20	35		25	15	10	10		20		10	10	10



Lot 7

## 8

## RFS M13

Rydeen Farms

**Homo Black | Homo Polled | PB SM | Yearling Bull**  
BD: 2/22/24 | Tattoo: M13 | ASA#: 4368901

SIRE **JC MR PONTIAC D114K**  
GIBBS 9114G ESSENTIAL  
FSCR D114 LUCILLE B089XP  
LCDR IMPACT 134F

DAM **RFS MISS J121**  
LCDR MS GISELLE 8G



Act BW	90
Adj WW	722
Adj YW	1166
Frame Sc	6.0
ADG	2.80
WDA	3.30
Adj SC	35.8

Genomic Enhanced EPDs

EPD	CE	BW	WW	YW	ADG	MCE	Milk	MWW	Stay	Doc	CW	YG	Marb	BF	REA	API	TI
	10.7	3.1	93.4	143.5	0.31	6.3	22.3	68.9	17.2	14.0	42.8	-0.36	0.56	-0.055	1.11	159.8	96.6
%			10	10	15	45		25	35	25	10		10		10	15	10

## 9

## RFS M6

Rydeen Farms

**Homo Black | Homo Polled | PB SM | Yearling Bull**  
BD: 2/20/24 | Tattoo: M6 | ASA#: 4368895

SIRE **JC MR PONTIAC D114K**  
GIBBS 9114G ESSENTIAL  
FSCR D114 LUCILLE B089XP  
LCDR IMPACT 134F

DAM **RFS MISS J121**  
LCDR MS GISELLE 8G



Act BW	77
Adj WW	652
Adj YW	1024
Frame Sc	5.7
ADG	2.35
WDA	2.91
Adj SC	35.7

Genomic Enhanced EPDs

EPD	CE	BW	WW	YW	ADG	MCE	Milk	MWW	Stay	Doc	CW	YG	Marb	BF	REA	API	TI
	13.8	-1.6	86.0	131.1	0.28	8.0	22.3	65.3	17.7	17.1	39.9	-0.29	0.38	-0.051	0.90	159.6	93.3
%	20	10	25	25	30	20		35	25	5	15		20		45	15	15



Lot 10

## 10

## RFS M54

Rydeen Farms

**Homo Black | Homo Polled | PB SM | Yearling Bull**  
BD: 2/27/24 | Tattoo: M54 | ASA#: 4368940

SIRE **JC MR PONTIAC D114K**  
GIBBS 9114G ESSENTIAL  
FSCR D114 LUCILLE B089XP  
LCDR IMPACT 134F

DAM **RFS MISS J33**  
LRS MS 3C PASQUE 8037F



Act BW	92
Adj WW	786
Adj YW	1176
Frame Sc	5.8
ADG	2.47
WDA	3.28
Adj SC	38.0

Genomic Enhanced EPDs

EPD	CE	BW	WW	YW	ADG	MCE	Milk	MWW	Stay	Doc	CW	YG	Marb	BF	REA	API	TI
	9.8	1.6	85.0	134.4	0.31	5.8	23.7	66.1	18.6	15.4	34.1	-0.31	0.47	-0.045	0.94	156.4	91.2
%			25	20	15		45	35	20	15	30		15		35	15	15

- Ratios BW 109, WW 100, YW 101
- Dam is an Impact daughter out of a great Lassle cow
- Outcross pedigree

## 11

## RFS M4

Rydeen Farms

**Homo Black | Homo Polled | PB SM | Yearling Bull**  
BD: 2/19/24 | Tattoo: M4 | ASA#: 4368893

SIRE **JC MR PONTIAC D114K**  
GIBBS 9114G ESSENTIAL  
FSCR D114 LUCILLE B089XP  
TJ HEISMAN 388F

DAM **RFS MISS J2**  
RFS MISS PROCLAMATION G109



Act BW	87
Adj WW	798
Adj YW	1243
Frame Sc	6.0
ADG	2.82
WDA	3.42
Adj SC	38.1

Genomic Enhanced EPDs

EPD	CE	BW	WW	YW	ADG	MCE	Milk	MWW	Stay	Doc	CW	YG	Marb	BF	REA	API	TI
	10.0	3.7	103.1	161.5	0.37	4.4	24.3	75.8	17.0	16.2	39.1	-0.14	0.67	-0.016	0.70	166.8	103.9
%			2	2	2		40	5	35	10	20		3		10	2	

- Ratios BW 103, WW 101, YW 106
- Adj WWT of 798
- Performance bull out of a TJ Heisman dam



Lot 11





Lot 12



Lot 13



Lot 14



Lot 15

## 12 RFS M118

Rydeen Farms **Homo Black | Homo Polled | 3/4 SM 1/4 AN | Yearling Bull**  
 BD: 3/10/24 | Tattoo: M118 | ASA#: 4369004

SIRE **JC MR PONTIAC D114K**  
 GIBBS 9114G ESSENTIAL  
 FSCR D114 LUCILLE B089XP  
 LCDR IMPACT 134F

DAM **RFS MISS K203**  
 PCR FUTURE FORCE E726



Act BW	88
Adj WW	793
Adj YW	1264
Frame Sc	5.9
ADG	2.99
WDA	3.40
Adj SC	37.2

Genomic Enhanced EPDs

CE	BW	WW	YW	ADG	MCE	Milk	MWW	Stay	Doc	CW	YG	Marb	BF	REA	API	TI
11.4	2.0	99.7	157.2	0.36	7.1	23.4	73.4	16.3	16.8	35.6	-0.24	0.42	-0.037	0.80	144.0	93.8
%		2	3	10	50		10	35	10	45	45			30	35	10

- 3/4 blood with Adj WWT of 793
- Ratios BW 107, WW 101, YW 108
- Granddam is a super 1/2 blood

## 13 RFS M174

Rydeen Farms **Homo Black | Homo Polled | 5/8 SM 3/8 AN | Yearling Bull**  
 BD: 3/20/24 | Tattoo: M174 | ASA#: 4369060

SIRE **JC MR PONTIAC D114K**  
 GIBBS 9114G ESSENTIAL  
 FSCR D114 LUCILLE B089XP  
 CONNEALY CONFIDENCE PLUS

DAM **F168**  
 D124



Act BW	90
Adj WW	779
Adj YW	1194
Frame Sc	5.9
ADG	2.62
WDA	3.46
Adj SC	39.2

Genomic Enhanced EPDs

CE	BW	WW	YW	ADG	MCE	Milk	MWW	Stay	Doc	CW	YG	Marb	BF	REA	API	TI
11.0	-0.1	83.4	138.1	0.34	5.5	25.7	67.3	18.6	15.4	43.3	-0.29	0.56	-0.040	1.02	154.4	90.8
%		50	25	15	10	35	25	15	20	25	30	25		10	20	20

- 5/8 blood
- Large scrotal bull
- Extremely balanced EPD profile

## 14 RFS M25

Rydeen Farms **Homo Black | Homo Polled | PB SM | Yearling Bull**  
 BD: 2/24/24 | Tattoo: M25 | ASA#: 4368913

SIRE **JC MR PONTIAC D114K**  
 GIBBS 9114G ESSENTIAL  
 FSCR D114 LUCILLE B089XP  
 LCDR IMPACT 134F

DAM **RFS MISS J131**  
 RFS MISS Z84



Act BW	90
Adj WW	844
Adj YW	1211
Frame Sc	6.0
ADG	2.33
WDA	3.38
Adj SC	37.9

Genomic Enhanced EPDs

CE	BW	WW	YW	ADG	MCE	Milk	MWW	Stay	Doc	CW	YG	Marb	BF	REA	API	TI
7.4	2.6	99.7	154.2	0.34	4.8	23.3	73.0	15.9	13.2	47.4	-0.44	0.17	-0.073	1.28	136.1	91.5
%		3	3	10		50	10	50	35	10	30	50	50	2	45	15

- Adj WWT of 844
- Ratios BW 107, WW 107, YW 104
- Performance pedigree out of an Impact daughter

## 15 RFS M190

Rydeen Farms **Homo Black | Homo Polled | PB SM | Yearling Bull**  
 BD: 3/25/24 | Tattoo: M190 | ASA#: 4369076

SIRE **JC MR PONTIAC D114K**  
 GIBBS 9114G ESSENTIAL  
 FSCR D114 LUCILLE B089XP  
 HOOK'S BEACON 56B

DAM **RFS MISS BEACON G89**  
 RFS MISS Z25



Act BW	86
Adj WW	736
Adj YW	1181
Frame Sc	6.0
ADG	2.81
WDA	3.38
Adj SC	39.5

Genomic Enhanced EPDs

CE	BW	WW	YW	ADG	MCE	Milk	MWW	Stay	Doc	CW	YG	Marb	BF	REA	API	TI
13.6	-1.6	83.1	128.9	0.29	9.0	25.1	66.7	24.1	14.3	35.2	-0.44	0.68	-0.064	1.21	189.2	100.4
%		25	10	30	25	10	35	30	1	20	25	30	3	4	1	4

- Double digit calving ease with negative birth weight
- Top percentile carcass and economic indexes



## 16

## RFS M20

Rydeen Farms **Homo Black | Homo Polled | PB SM | Yearling Bull**  
BD: 2/24/24 | Tattoo: M20 | ASA#: 4368908

SIRE **JC MR PONTIAC D114K**  
GIBBS 9114G ESSENTIAL  
FSCR D114 LUCILLE B089XP  
DAM **RFS MISS J87**  
WS PROCLAMATION E202  
C78



Act BW	87
Adj WW	877
Adj YW	1173
Frame Sc	6.0
ADG	1.88
WDA	3.30
Adj SC	39.9

Genomic Enhanced EPDs

CE	BW	WW	YW	ADG	MCE	Milk	MWW	Stay	Doc	CW	YG	Marb	BF	REA	API	TI
12.8	-0.3	93.8	145.8	0.32	6.9	27.7	74.5	17.8	13.8	31.7	-0.26	0.48	-0.034	0.82	165.3	99.5
%	35	25	10	10	10	35	20	10	25	35		10			10	4

- Adj WWT of 877
- Double digit calving ease
- Ratios BW 103, WW 111, YW 100



Lot 16

## 17

## RFS M83

Rydeen Farms **Homo Black | Homo Polled | PB SM | Yearling Bull**  
BD: 3/2/24 | Tattoo: M83 | ASA#: 4368969

SIRE **JC MR PONTIAC D114K**  
GIBBS 9114G ESSENTIAL  
FSCR D114 LUCILLE B089XP  
DAM **RFS MISS JEAN J60**  
LCDR IMPACT 134F  
LRS MS 3C PASQUE 8037F



Act BW	93
Adj WW	811
Adj YW	1272
Frame Sc	6.0
ADG	2.92
WDA	3.52
Adj SC	41.3

Genomic Enhanced EPDs

CE	BW	WW	YW	ADG	MCE	Milk	MWW	Stay	Doc	CW	YG	Marb	BF	REA	API	TI
11.3	1.3	97.0	148.7	0.32	6.6	23.8	72.3	20.4	11.9	51.7	-0.20	0.46	-0.041	0.83	165.3	98.0
%	50	4	5	10	40	45	15	5	50	3		15			10	5

- Adj WWT of 811
- Double digit calving ease out of an Impact x 3C Pasque daughter
- Ratios BW 110, WW 103, YW 109



Lot 17

## 18

## RFS M93

Rydeen Farms **Hetero Black | Homo Polled | PB SM | Yearling Bull**  
BD: 3/4/24 | Tattoo: M93 | ASA#: 4368979

SIRE **JC MR PONTIAC D114K**  
GIBBS 9114G ESSENTIAL  
FSCR D114 LUCILLE B089XP  
DAM **RFS MISS KAYLA K87**  
RFS HERALD H104  
RFS MISS H206



Act BW	95
Adj WW	776
Adj YW	1187
Frame Sc	5.9
ADG	2.61
WDA	3.19
Adj SC	40.4

Genomic Enhanced EPDs

CE	BW	WW	YW	ADG	MCE	Milk	MWW	Stay	Doc	CW	YG	Marb	BF	REA	API	TI
6.5	3.8	95.8	148.1	0.33	1.9	22.0	69.9	16.5	15.0	44.1	-0.38	0.38	-0.054	1.20	143.6	92.3
%		5	5	10			20	40	15	10		20		5	35	15

- Hetero black out of an RFS Herald daughter
- Performance pedigree
- Large scrotal bull



Lot 18

## 19

## RFS M232

Rydeen Farms **Homo Black | Homo Polled | 5/8 SM 3/8 AN | Yearling Bull**  
BD: 4/7/24 | Tattoo: M232 | ASA#: 4369118

SIRE **JC MR PONTIAC D114K**  
GIBBS 9114G ESSENTIAL  
FSCR D114 LUCILLE B089XP  
DAM **RFS MISS RELEVANCE G83**  
G A R RELEVANCE  
D107



Act BW	83
Adj WW	909
Adj YW	
Frame Sc	6.0
ADG	2.76
WDA	3.87
Adj SC	40.2

Genomic Enhanced EPDs

CE	BW	WW	YW	ADG	MCE	Milk	MWW	Stay	Doc	CW	YG	Marb	BF	REA	API	TI
13.4	-1.3	85.6	134.8	0.31	7.3	30.0	71.1	19.8	13.3	34.3	-0.18	0.62	-0.021	0.71	164.1	94.7
%	40	30	20	20	25	45	10	15	10	40	45		20		45	10

- 5/8 blood with punch
- Adj WWT of 909
- Too young to calculate YWT



Lot 19





Lot 20



Lot 21



Lot 22

## 20 RFS M103

Rydeen Farms **Homo Black | Homo Polled | PB SM | Yearling Bull**  
BD: 3/6/24 | Tattoo: M103 | ASA#: 4368988

SIRE **JC MR PONTIAC D114K**  
GIBBS 9114G ESSENTIAL  
FSCR D114 LUCILLE B089XP  
ER PHOENIX H417

DAM **RFS MISS K192**  
RFS MISS H66



Act BW	86
Adj WW	746
Adj YW	1194
Frame Sc	5.7
ADG	2.84
WDA	3.19
Adj SC	36.5

Genomic Enhanced EPDs

CE	BW	WW	YW	ADG	MCE	Milk	MWW	Stay	Doc	CW	YG	Marb	BF	REA	API	TI
15.7	-1.8	86.9	132.1	0.28	8.2	20.9	64.2	20.4	15.5	24.9	-0.24	0.57	-0.022	0.77	178.5	98.7
%	10	10	20	20	30	20		40	5	15		10			3	5

- Double digit calving ease with negative birth weight
- Balanced EPD profile
- Out of a nice ER Phoenix female

## 21 RFS M129

Rydeen Farms **Hetero Black | Homo Polled | PB SM | Yearling Bull**  
BD: 3/12/24 | Tattoo: M129 | ASA#: 4369014

SIRE **JC MR PONTIAC D114K**  
GIBBS 9114G ESSENTIAL  
FSCR D114 LUCILLE B089XP  
LCDR IMPACT 134F

DAM **RFS MISS J48**  
F64



Act BW	78
Adj WW	725
Adj YW	1196
Frame Sc	5.6
ADG	2.97
WDA	3.29
Adj SC	38.8

Genomic Enhanced EPDs

CE	BW	WW	YW	ADG	MCE	Milk	MWW	Stay	Doc	CW	YG	Marb	BF	REA	API	TI
16.2	-3.1	76.3	119.0	0.27	9.5	22.0	60.0	18.4	13.1	25.4	-0.25	0.58	-0.023	0.82	174.7	94.7
%	10	3	45	35	10			20	35			5			4	10

- Out of an Impact daughter
- Excellent carcass and economic indexes
- Great disposition

## 22 RFS M182

Rydeen Farms **Homo Black | Hetero Polled | PB SM | Yearling Bull**  
BD: 3/21/24 | Tattoo: M182 | ASA#: 4369069

SIRE **JC MR PONTIAC D114K**  
GIBBS 9114G ESSENTIAL  
FSCR D114 LUCILLE B089XP  
KBHR COMPASS C324

DAM **E141**  
U80



Act BW	82
Adj WW	749
Adj YW	1117
Frame Sc	5.7
ADG	2.32
WDA	3.23
Adj SC	35.8

Genomic Enhanced EPDs

CE	BW	WW	YW	ADG	MCE	Milk	MWW	Stay	Doc	CW	YG	Marb	BF	REA	API	TI
13.5	-0.9	77.4	113.8	0.23	7.8	21.0	59.6	23.6	16.0	32.6	-0.19	0.33	-0.018	0.76	162.5	85.2
%	25	15			20			1	10	35		25			10	35

- Double digit calving ease with negative birth weight
- Dam is a hard-working 8 year old that always produces

## 23 RFS M250

Rydeen Farms **Black | Homo Polled | 3/4 SM 1/4 AN | Yearling Bull**  
BD: 4/18/24 | Tattoo: M250 | ASA#: 4369136

SIRE **JC MR PONTIAC D114K**  
GIBBS 9114G ESSENTIAL  
FSCR D114 LUCILLE B089XP  
CLRS CONSTITUTION 311 C

DAM **F84**  
RFS MISS ARIZONA A111



Act BW	83
Adj WW	850
Adj YW	
Frame Sc	5.5
ADG	2.35
WDA	3.50
Adj SC	39.8

Genomic Enhanced EPDs

CE	BW	WW	YW	ADG	MCE	Milk	MWW	Stay	Doc	CW	YG	Marb	BF	REA	API	TI
10.8	1.0	84.7	135.5	0.32	6.1	20.1	62.4	22.4	16.6	44.1	-0.35	0.51	-0.055	1.09	157.4	88.5
%		20	20	20			50	1	10	20	15	30	30	4	15	25

- 3/4 blood out of a super Constitution dam
- Adj WWT of 850
- Youngest calf in the offering

## 24 RFS M196

Rydeen Farms **Homo Black | Homo Polled | 5/8 SM 3/8 AN | Yearling Bull**  
BD: 3/25/24 | Tattoo: M196 | ASA#: 4369082

SIRE **JC MR PONTIAC D114K**  
GIBBS 9114G ESSENTIAL  
FSCR D114 LUCILLE B089XP  
G A R RELEVANCE

DAM **RFS MISS RELEVANCE G149**  
RFS MISS ACADEMIC A160



Act BW	87
Adj WW	795
Adj YW	1183
Frame Sc	5.5
ADG	2.45
WDA	3.43
Adj SC	38.5

Genomic Enhanced EPDs

CE	BW	WW	YW	ADG	MCE	Milk	MWW	Stay	Doc	CW	YG	Marb	BF	REA	API	TI
15.7	-2.0	74.2	121.1	0.29	8.3	26.5	61.9	18.8	13.7	39.1	-0.31	0.67	-0.040	1.05	166.3	90.9
%	20	20	45	35	30	30	50	10	35	35	25	15		10	10	20

- 5/8 blood with excellent carcass quality
- Double digit calving ease and negative birth weight



## 25

## RFS M15

Rydeen Farms **Homo Black | Homo Polled | 5/8 SM 3/8 AN | Yearling Bull**  
BD: 2/23/24 | Tattoo: M15 | ASA#: 4368903

SIRE **JC MR PONTIAC D114K**  
GIBBS 9114G ESSENTIAL  
FSCR D114 LUCILLE B089XP  
EGL FIRESTEEL 103F

DAM **RFS MISS J108**  
RFS MISS GRETA G75



Act BW	89
Adj WW	755
Adj YW	1190
Frame Sc	5.8
ADG	2.76
WDA	3.29
Adj SC	36.8

Genomic Enhanced EPDs

	CE	BW	WW	YW	ADG	MCE	Milk	MWW	Stay	Doc	CW	YG	Marb	BF	REA	API	TI
EPD	12.4	-2.1	79.6	123.0	0.27	5.5	23.2	62.9	22.9	16.3	21.1	-0.32	0.71	-0.029	0.92	173.4	94.1
%	20	35	40	50			45	1	15		25	10			15	4	10

- 5/8 blood out of a EGL Firesteel dam
- Calving ease and negative birth weight



Lot 25

## 26

## RFS M2

Rydeen Farms **Homo Black | Homo Polled | 3/4 SM 1/4 AN | Yearling Bull**  
BD: 2/17/24 | Tattoo: M2 | ASA#: 436891

SIRE **JC MR PONTIAC D114K**  
GIBBS 9114G ESSENTIAL  
FSCR D114 LUCILLE B089XP  
KBHR NEXT LEVEL E206

DAM **RFS MISS J42**  
E82



Act BW	82
Adj WW	792
Adj YW	1155
Frame Sc	6.0
ADG	2.30
WDA	3.23
Adj SC	39.5

Genomic Enhanced EPDs

	CE	BW	WW	YW	ADG	MCE	Milk	MWW	Stay	Doc	CW	YG	Marb	BF	REA	API	TI
EPD	12.1	1.1	90.6	141.8	0.32	8.0	24.1	69.3	20.5	12.3	46.9	-0.21	0.55	-0.028	0.91	158.3	92.7
%			10	10	20	35	50	20	4		15		25		15	15	15

- 3/4 blood with adj WWT of 792
- Double digit calving ease with well balanced EPD profile

## 27

## RFS M50

Rydeen Farms **Hetero Black | Homo Polled | PB SM | Yearling Bull**  
BD: 2/27/24 | Tattoo: M50 | ASA#: 4369163

SIRE **JC MR PONTIAC D114K**  
GIBBS 9114G ESSENTIAL  
FSCR D114 LUCILLE B089XP  
LCDR IMPACT 134F

DAM **RFS MISS J147**  
WS ELECTRA E88



Act BW	85
Adj WW	699
Adj YW	1124
Frame Sc	5.5
ADG	2.69
WDA	3.09
Adj SC	35.0

Genomic Enhanced EPDs

	CE	BW	WW	YW	ADG	MCE	Milk	MWW	Stay	Doc	CW	YG	Marb	BF	REA	API	TI
EPD	12.2	-4.3	71.3	105.2	0.21	6.8	21.5	57.1	25.0	15.3	10.7	-0.24	0.60	-0.021	0.60	182.6	92.5
%	40	1				35			1	15		5				2	15

- Hetero black out of an Impact x Electra E88 daughter
- Double digit calving ease with negative birth weight
- Excellent carcass and economic indexes



Lot 28

## 28

## RFS M175

Rydeen Farms **Homo Black | Homo Polled | PB SM | Yearling Bull**  
BD: 3/20/24 | Tattoo: M175 | ASA#: 4369061

SIRE **JC MR PONTIAC D114K**  
GIBBS 9114G ESSENTIAL  
FSCR D114 LUCILLE B089XP  
LCDR IMPACT 134F

DAM **RFS MISS H3**  
E42



Act BW	89
Adj WW	767
Adj YW	1171
Frame Sc	6.0
ADG	2.55
WDA	3.32
Adj SC	39.2

Genomic Enhanced EPDs

	CE	BW	WW	YW	ADG	MCE	Milk	MWW	Stay	Doc	CW	YG	Marb	BF	REA	API	TI
EPD	12.7	1.2	90.6	145.4	0.34	7.5	19.3	64.5	21.5	17.1	43.8	-0.38	0.37	-0.049	1.24	164.2	93.1
%	35	50	15	10	10	25		40	3	5	10		20		3	10	15

- Well balanced EPD profile
- Growth pedigree with Impact on the dam side

Confidently choose the logoed group that matches your needs, then just pick the bulls you like:



**ACCREDITED GENOMIC PLUS** - For the majority of producers who simply need consistent and balanced genetic improvement, without genomic setbacks, G+ Accredited bulls should be

on your list for premium purchase. These sires will absolutely move you forward for both cost reduction and income producing traits and substantially reduce risk when compared to all other evaluation programs. It's simple, the right genes are in these bulls to help secure a profitable future and they have great EPDs to match!



**ACCREDITED TERMINAL MATE** - Just like an ATM machine makes it simpler to access your cash, the ATM Logo highlights bulls accredited to generate

extra cash income as soon as your next calf crop! These bulls are meant specifically to use only on mature cows and for the purpose of adding performance, pay weight and end product value to market.



**ACCREDITED CALVING EASE** - Simply find bulls with the ACE logo for third party Accredited, secure Calving Ease bulls. Though we have had tools in the

past to assist in choosing heifer bulls, we've never had one nearly this effective. The reduced risk that comes with this genomic certification will simply make your decisions easier and your heifer calving season more successful. Purchase special purpose ACE bulls with confidence. They will deliver consistent and predictable calving ease.



# Song of **LCDR RESERVE 210J** SIRE TO LOTS 29-32

The popular Reserve bull was our choice to flush to a couple of our young donors, K42 and K31. These matings really clicked! The flush mates are powerful, and all have the ATM logo. They all have impressive individual performance as well with excellent weaning weights.





**Lot 29**





**LCDR Ms Giselle 8G**  
Granddam of Lots 29 and 31



**Lot 30**

<b>29</b>	<b>RFS M88</b>																																																			
Rydeen Farms	<b>Homo Black   Homo Polled   PB SM   Yearling Bull</b> BD: 3/3/24   Tattoo: M88   ASA#: 4368974																																																			
SIRE	HHS MR ENTOURAGE 867B <b>LCDR RESERVE 210J</b>																																																			
DAM	LCDR MS ECHO 43E TJ PLATTE RIVER 370D <b>RFS MIS K42</b> LCDR MS GISELLE 8G																																																			
	 																																																			
	<table border="1"> <tr><td>Act BW</td><td>88</td></tr> <tr><td>Adj WW</td><td>834</td></tr> <tr><td>Adj YW</td><td>1240</td></tr> <tr><td>Frame Sc</td><td>5.9</td></tr> <tr><td>ADG</td><td>2.56</td></tr> <tr><td>WDA</td><td>3.54</td></tr> <tr><td>Adj SC</td><td>39.3</td></tr> </table>	Act BW	88	Adj WW	834	Adj YW	1240	Frame Sc	5.9	ADG	2.56	WDA	3.54	Adj SC	39.3																																					
Act BW	88																																																			
Adj WW	834																																																			
Adj YW	1240																																																			
Frame Sc	5.9																																																			
ADG	2.56																																																			
WDA	3.54																																																			
Adj SC	39.3																																																			
Genomic Enhanced EPDs																																																				
EPD	<table border="1"> <tr> <th>CE</th><th>BW</th><th>WW</th><th>YW</th><th>ADG</th><th>MCE</th><th>Milk</th><th>MWW</th><th>Stay</th><th>Doc</th><th>CW</th><th>YG</th><th>Marb</th><th>BF</th><th>REA</th><th>API</th><th>TI</th> </tr> <tr> <td>12.4</td><td>2.3</td><td>95.5</td><td>143.4</td><td>0.30</td><td>7.7</td><td>20.3</td><td>68.0</td><td>14.1</td><td>18.2</td><td>36.6</td><td>-0.24</td><td>0.48</td><td>-0.035</td><td>0.83</td><td>152.4</td><td>96.1</td> </tr> <tr> <td>%</td><td>40</td><td>10</td><td>10</td><td>20</td><td>25</td><td></td><td>25</td><td></td><td>3</td><td>25</td><td></td><td>10</td><td></td><td></td><td>20</td><td>10</td> </tr> </table>	CE	BW	WW	YW	ADG	MCE	Milk	MWW	Stay	Doc	CW	YG	Marb	BF	REA	API	TI	12.4	2.3	95.5	143.4	0.30	7.7	20.3	68.0	14.1	18.2	36.6	-0.24	0.48	-0.035	0.83	152.4	96.1	%	40	10	10	20	25		25		3	25		10			20	10
CE	BW	WW	YW	ADG	MCE	Milk	MWW	Stay	Doc	CW	YG	Marb	BF	REA	API	TI																																				
12.4	2.3	95.5	143.4	0.30	7.7	20.3	68.0	14.1	18.2	36.6	-0.24	0.48	-0.035	0.83	152.4	96.1																																				
%	40	10	10	20	25		25		3	25		10			20	10																																				

<b>30</b>	<b>RFS M91</b>																																																			
Rydeen Farms	<b>Homo Black   Homo Polled   PB SM   Yearling Bull</b> BD: 3/3/24   Tattoo: M91   ASA#: 4368977																																																			
SIRE	HHS MR ENTOURAGE 867B <b>LCDR RESERVE 210J</b>																																																			
DAM	LCDR MS ECHO 43E HOOK'S ENCORE 65E <b>RFS MISS K31</b> RFS MISS GRETA G75																																																			
	 																																																			
	<table border="1"> <tr><td>Act BW</td><td>100</td></tr> <tr><td>Adj WW</td><td>813</td></tr> <tr><td>Adj YW</td><td>1297</td></tr> <tr><td>Frame Sc</td><td>6.0</td></tr> <tr><td>ADG</td><td>3.05</td></tr> <tr><td>WDA</td><td>3.67</td></tr> <tr><td>Adj SC</td><td>40.3</td></tr> </table>	Act BW	100	Adj WW	813	Adj YW	1297	Frame Sc	6.0	ADG	3.05	WDA	3.67	Adj SC	40.3																																					
Act BW	100																																																			
Adj WW	813																																																			
Adj YW	1297																																																			
Frame Sc	6.0																																																			
ADG	3.05																																																			
WDA	3.67																																																			
Adj SC	40.3																																																			
Genomic Enhanced EPDs																																																				
EPD	<table border="1"> <tr> <th>CE</th><th>BW</th><th>WW</th><th>YW</th><th>ADG</th><th>MCE</th><th>Milk</th><th>MWW</th><th>Stay</th><th>Doc</th><th>CW</th><th>YG</th><th>Marb</th><th>BF</th><th>REA</th><th>API</th><th>TI</th> </tr> <tr> <td>12.1</td><td>2.1</td><td>93.4</td><td>143.4</td><td>0.31</td><td>7.3</td><td>20.0</td><td>66.7</td><td>16.0</td><td>19.6</td><td>26.2</td><td>-0.35</td><td>0.60</td><td>-0.055</td><td>0.89</td><td>163.4</td><td>98.9</td> </tr> <tr> <td>%</td><td>45</td><td>10</td><td>10</td><td>15</td><td>30</td><td></td><td>30</td><td>50</td><td>1</td><td></td><td></td><td>5</td><td></td><td>45</td><td>10</td><td>5</td> </tr> </table>	CE	BW	WW	YW	ADG	MCE	Milk	MWW	Stay	Doc	CW	YG	Marb	BF	REA	API	TI	12.1	2.1	93.4	143.4	0.31	7.3	20.0	66.7	16.0	19.6	26.2	-0.35	0.60	-0.055	0.89	163.4	98.9	%	45	10	10	15	30		30	50	1			5		45	10	5
CE	BW	WW	YW	ADG	MCE	Milk	MWW	Stay	Doc	CW	YG	Marb	BF	REA	API	TI																																				
12.1	2.1	93.4	143.4	0.31	7.3	20.0	66.7	16.0	19.6	26.2	-0.35	0.60	-0.055	0.89	163.4	98.9																																				
%	45	10	10	15	30		30	50	1			5		45	10	5																																				



**Lot 31**



**LCDR Reserve 210J**  
Sire of Lots 29-32



**Lot 32**

**31**

**RFS M90**

Rydeen Farms

**Homo Black | Homo Polled | PB SM | Yearling Bull**  
BD: 3/3/24 | Tattoo: M90 | ASA#: 4368976

SIRE HHS MR ENTOURAGE 867B  
**LCDR RESERVE 210J**  
LCDR MS ECHO 43E  
DAM TJ PLATTE RIVER 370D  
**RFS MIS K42**  
LCDR MS GISELLE 8G



Act BW	90
Adj WW	785
Adj YW	1147
Frame Sc	5.9
ADG	2.29
WDA	3.28
Adj SC	36.3

Genomic Enhanced EPDs

EPD	CE	BW	WW	YW	ADG	MCE	Milk	MWW	Stay	Doc	CW	YG	Marb	BF	REA	API	TI
	12.9	1.6	99.7	150.4	0.32	7.9	20.3	70.1	15.8	17.2	36.8	-0.23	0.52	-0.040	0.76	161.6	100.6
%	30		3	4	10	20		20	50	5	25		10			15	3

**32**

**RFS M89**

Rydeen Farms

**Homo Black | Homo Polled | PB SM | Yearling Bull**  
BD: 3/3/24 | Tattoo: M89 | ASA#: 4368975

SIRE HHS MR ENTOURAGE 867B  
**LCDR RESERVE 210J**  
LCDR MS ECHO 43E  
DAM HOOK'S ENCORE 65E  
**RFS MISS K31**  
RFS MISS GRETA G75



Act BW	88
Adj WW	816
Adj YW	1251
Frame Sc	5.9
ADG	2.74
WDA	3.55
Adj SC	39.3

Genomic Enhanced EPDs

EPD	CE	BW	WW	YW	ADG	MCE	Milk	MWW	Stay	Doc	CW	YG	Marb	BF	REA	API	TI
	13.5	0.8	95.0	143.4	0.30	8.2	20.0	67.5	16.4	16.7	17.8	-0.36	0.62	-0.048	0.85	169.7	102.0
%	25	40	10	10	20	20		25	45	10			4			10	3





*Sons of* **TRIF BREAKAWAY 206K**  
SIRE TO LOTS 33-36

TRIF Breakaway was our choice for a herd sire in the heifer pen. His calves came easy and grew! They have triple digit TI's and all the bulls in this sire group weaned at over 800 pounds. Lot 33 (M104) busted the scale at 936. Lot 33 and Lot 34 are full sibs with a powerful dam from one of our favorite donors, Giselle 8G x TJ Platte River.



**Lot 33**



**LCDR Ms Giselle 8G - Granddam of Lots 33 and 34**

**33**

**RFS M104**

Rydeen Farms

**Homo Black | Homo Polled | PB SM | Yearling Bull**  
BD: 3/6/24 | Tattoo: M104 | ASA#: 4368989

SIRE **TRIF BREAKAWAY 206K**  
HOOK'S GALILEO 210G  
KBHR DEBUTANTE H113  
TJ PLATTE RIVER 370D  
DAM **RFS MIS K42**  
LCDR MS GISELLE 8G

Act BW	87
Adj WW	936
Adj YW	1248
Frame Sc	5.8
ADG	1.97
WDA	3.60
Adj SC	38.0



Genomic Enhanced EPDs

	CE	BW	WW	YW	ADG	MCE	Milk	MWW	Stay	Doc	CW	YG	Marb	BF	REA	API	TI
EPD	12.5	3.8	113.9	180.8	0.42	8.0	27.0	83.9	17.4	16.7	48.2	-0.16	0.82	-0.052	0.61	184.1	115.0
%	35		1	1	1	20	20	1	30	10	5		1			2	1

34

### RFS M87

Rydeen Farms

**Homo Black | Homo Polled | PB SM | Yearling Bull**  
BD: 3/2/24 | Tattoo: M87 | ASA#: 4368973

SIRE HOOK'S GALILEO 210G  
**TRIF BREAKAWAY 206K**  
KBHR DEBUTANTE H113  
TJ PLATTE RIVER 370D  
DAM **RFS MIS K42**  
LCDR MS GISELLE 8G



Act BW	85
Adj WW	801
Adj YW	1160
Frame Sc	5.9
ADG	2.27
WDA	3.32
Adj SC	36.8

Genomic Enhanced EPDs

CE	BW	WW	YW	ADG	MCE	Milk	MWW	Stay	Doc	CW	YG	Marb	BF	REA	API	TI
11.3	1.1	101.2	162.2	0.38	7.3	27.0	77.6	17.2	16.7	42.4	-0.19	0.79	-0.049	0.64	180.6	109.9
%	50	2	1	2	30	20	3	35	10	15		1			2	1



Lot 34

35

### RFS M143

Rydeen Farms

**Homo Black | Homo Polled | PB SM | Yearling Bull**  
BD: 3/15/24 | Tattoo: M143 | ASA#: 4369028

SIRE HOOK'S GALILEO 210G  
**TRIF BREAKAWAY 206K**  
KBHR DEBUTANTE H113  
LCDR IMPACT 134F  
DAM **RFS MISS K180**  
E3



Act BW	80
Adj WW	843
Adj YW	1148
Frame Sc	5.5
ADG	1.95
WDA	3.12
Adj SC	35.0

Genomic Enhanced EPDs

CE	BW	WW	YW	ADG	MCE	Milk	MWW	Stay	Doc	CW	YG	Marb	BF	REA	API	TI
12.7	-2.4	88.7	134.8	0.29	7.6	25.6	69.9	21.2	17.3	39.0	-0.23	0.84	-0.052	0.70	192.7	107.3
%	35	4	15	20	25	30	20	3	4	20		1			1	1



Lot 35

36

### RFS M111

Rydeen Farms

**Homo Black | Homo Polled | PB SM | Yearling Bull**  
BD: 3/7/24 | Tattoo: M111 | ASA#: 4368996

SIRE HOOK'S GALILEO 210G  
**TRIF BREAKAWAY 206K**  
KBHR DEBUTANTE H113  
TJ PLATTE RIVER 370D  
DAM **RFS MISS K40**  
LCDR MS GISELLE 8G



Act BW	90
Adj WW	889
Adj YW	1199
Frame Sc	5.6
ADG	1.97
WDA	3.27
Adj SC	41.5

Genomic Enhanced EPDs

CE	BW	WW	YW	ADG	MCE	Milk	MWW	Stay	Doc	CW	YG	Marb	BF	REA	API	TI
13.3	2.2	93.5	148.4	0.34	8.4	30.1	76.7	17.9	16.3	38.6	-0.07	0.92	-0.033	0.35	185.4	106.9
%	25		10	5	10	15	10	4	25	10	20		1		2	1



Lot 36

#### PUREBRED SIMMENTAL EPD AVERAGES

%	API	TI	CE	BW	WW	ADG	YW	MCE	MLK	MWW	STY	DOC	CWT	YG	MRB	BF	REA
1	185.79	105.06	18.70	-3.70	103.50	0.38	161.80	11.20	34.10	80.30	22.60	19.20	57.80	-0.56	0.76	-0.12	1.34
25	147.50	87.18	13.20	0.00	84.50	0.28	128.40	7.40	26.10	67.40	17.60	13.60	34.80	-0.44	0.31	-0.09	0.98
50/Avg	132.14	80.11	11.40	1.40	77.60	0.24	115.90	5.80	23.00	61.70	15.50	11.60	27.30	-0.39	0.16	-0.07	0.86

#### HYBRID SIMMENTAL EPD AVERAGES

%	API	TI	CE	BW	WW	PWG	YW	MCE	MLK	MWW	STY	DOC	CWT	YG	MRB	BF	REA
1	186.70	103.61	20.80	-5.60	101.30	0.40	162.40	12.50	35.00	80.20	21.90	20.30	66.50	-0.48	1.04	-0.10	1.22
25	148.81	87.86	14.70	-1.30	82.60	0.30	129.80	8.40	26.90	67.10	16.90	14.30	41.20	-0.30	0.52	-0.06	0.82
50/Avg	133.49	80.95	12.50	0.20	75.50	0.26	116.90	6.80	23.80	61.80	14.60	12.30	32.50	-0.21	0.36	-0.04	0.67

YEARLING BULLS





**Lot 37**



**LCDR Impact 134F**  
Maternal Grand sire of Lots 37-40



**WS Electra E88**  
Maternal Granddam of Lots 37-40



**Lot 38**

*Sons of* **HOOK'S GALILEO X RFS MISS J133**

These two full sibs are special. Out of an Impact x Electra E88 dam, these two have a bright future. Lot 37 (M74) had the highest TI of any black, purebred bull born in 2024, according to the ASA database. Electra E88 is considered one of the best red cows in the breed. Here is your chance to take advantage of a homozygous black son out of this famed female with the phenotype of Impact. A very unique breeding piece! Full sibs to heifer pick Lots 122A & 122B.

**37** | **RFS M74**

Rydeen Farms | **Homo Black | Homo Polled | PB SM | Yearling Bull**  
BD: 3/1/24 | Tattoo: M74 | ASA#: 4368960



SIRE **HOOK'S GALILEO 210G**  
BRIDLE BIT ECLIPSE E744  
HOOK'S EVITA 18E

DAM **RFS MISS J133**  
LCDR IMPACT 134F  
WS ELECTRA E88

Genomic Enhanced EPDs

CE	BW	WW	YW	ADG	MCE	Milk	MWW	Stay	Doc	CW	YG	Marb	BF	REA	API	TI
13.2	1.6	114.1	184.3	0.44	8.0	29.4	86.4	15.1	18.4	51.3	-0.34	0.78	-0.086	0.94	184.1	118.3
%	30	1	1	1	20	10	1		2	3		1	30	35	2	1

Act BW 91  
Adj WW 800  
Adj YW 1337  
Frame Sc 6.0  
ADG 3.38  
WDA 3.76  
Adj SC 39.7

**38** | **RFS M37**

Rydeen Farms | **Homo Black | Homo Polled | PB SM | Yearling Bull**  
BD: 2/26/24 | Tattoo: M37 | ASA#: 4368924


SIRE **HOOK'S GALILEO 210G**  
BRIDLE BIT ECLIPSE E744  
HOOK'S EVITA 18E

DAM **RFS MISS J133**  
LCDR IMPACT 134F  
WS ELECTRA E88

Genomic Enhanced EPDs

CE	BW	WW	YW	ADG	MCE	Milk	MWW	Stay	Doc	CW	YG	Marb	BF	REA	API	TI
15.4	-2.5	90.3	136.3	0.29	9.7	29.4	74.5	20.0	18.8	43.0	-0.33	0.70	-0.076	0.88	187.7	106.2
%	10	4	15	15	25	10	10	10	2	10		2	50	50	1	1

Act BW 84  
Adj WW 762  
Adj YW 1180  
Frame Sc 6.0  
ADG 2.64  
WDA 3.35  
Adj SC 38.5





LCDR Impact 134F  
Maternal Grand sire of Lots 37-40

Lot 39

Full Sibs!  
LOTS 39-42



WS Electra E88  
Maternal Granddam of Lots 37-40



Lot 40

Song of **KBHR GENETIC FORCE**

Genetic Force is an outcross bull we flushed to one of our powerhouse donors, J133 who is the daughter of Impact and Electra E88. He is hetero black so there is one red flush mate (a red Impact grandson-rare!). Lots 39-42 are flush mates. The maternal side really enhanced the performance of this mating.

**39** | **RFS M68**  
Rydeen Farms | Red | Homo Polled | PB SM | Yearling Bull  
BD: 2/29/24 | Tattoo: M68 | ASA#: 4368954

SIRE TRPH RRR NIGHTFORCE B30  
**KBHR GENETIC FORCE G095**  
KBHR E197

DAM LCDR IMPACT 134F  
**RFS MISS J133**  
WS ELECTRA E88

Genomic Enhanced EPDs

CE	BW	WW	YW	ADG	MCE	Milk	MWW	Stay	Doc	CW	YG	Marb	BF	REA	API	TI
10.4	0.1	89.1	135.9	0.29	4.9	23.7	68.2	18.2	15.3	22.8	-0.39	0.60	-0.065	0.90	167.4	98.9
%		30	15	15	25		45	25	20	15		5		45	10	5

Act BW 87  
Adj WW 786  
Adj YW 1121  
Frame Sc 5.8  
ADG 2.12  
WDA 3.22  
Adj SC 38.1

**G+**

**40** | **RFS M35**  
Rydeen Farms | Hetero Black | Homo Polled | PB SM | Yearling Bull  
BD: 2/25/24 | Tattoo: M35 | ASA#: 4368922

SIRE TRPH RRR NIGHTFORCE B30  
**KBHR GENETIC FORCE G095**  
KBHR E197

DAM LCDR IMPACT 134F  
**RFS MISS J133**  
WS ELECTRA E88

Genomic Enhanced EPDs

CE	BW	WW	YW	ADG	MCE	Milk	MWW	Stay	Doc	CW	YG	Marb	BF	REA	API	TI	
10.6	0.3	93.3	147.9	0.34	5.1	23.7	70.3	20.4	16.7	33.9	-0.32	0.58	-0.048	0.94	172.8	100.7	
%		35	10	5	10		45	20	5	10	30		5		35	5	3

Act BW 90  
Adj WW 849  
Adj YW 1229  
Frame Sc 6.0  
ADG 2.39  
WDA 3.52  
Adj SC 38.9

**G+**  
**ATM**



# Full Sibs! LOTS 39-42



Lot 41

## 41 | RFS M49

Rydeen Farms | **Hetero Black | Homo Polled | PB SM | Yearling Bull**  
 BD: 2/27/24 | Tattoo: M49 | ASA#: 4368936

SIRE **KBHR GENETIC FORCE G095**  
 KBHR E197  
 LCDR IMPACT 134F  
 DAM **RFS MISS J133**  
 WS ELECTRA E88



Act BW	92
Adj WW	763
Adj YW	1225
Frame Sc	6.0
ADG	2.91
WDA	3.46
Adj SC	40.5

Genomic Enhanced EPDs

	CE	BW	WW	YW	ADG	MCE	Milk	MWW	Stay	Doc	CW	YG	Marb	BF	REA	API	TI
EPD	12.0	0.4	90.0	142.5	0.33	6.0	23.7	68.6	22.0	16.6	18.5	-0.38	0.59	-0.059	0.85	177.6	99.5
%	45	35	15	10	10	50	45	25	2	10			5			3	4



Lot 42

## 42 | RFS M30

Rydeen Farms | **Hetero Black | Homo Polled | PB SM | Yearling Bull**  
 BD: 2/25/24 | Tattoo: M30 | ASA#: 4368918

SIRE **KBHR GENETIC FORCE G095**  
 KBHR E197  
 LCDR IMPACT 134F  
 DAM **RFS MISS J133**  
 WS ELECTRA E88



Act BW	84
Adj WW	796
Adj YW	1150
Frame Sc	6.0
ADG	2.24
WDA	3.30
Adj SC	36.9

Genomic Enhanced EPDs

	CE	BW	WW	YW	ADG	MCE	Milk	MWW	Stay	Doc	CW	YG	Marb	BF	REA	API	TI
EPD	12.9	-1.1	79.4	119.2	0.25	6.2	23.7	63.3	19.5	15.2	19.4	-0.35	0.55	-0.039	0.94	167.9	93.2
%	30	15	45	45	50	45	45	45	10	15			10		35	10	15



Lot 43

## 43 | RFS M43

Rydeen Farms | **Homo Black | Homo Polled | PB SM | Yearling Bull**  
 BD: 2/26/24 | Tattoo: M43 | ASA#: 4368930

SIRE **KBHR GENETIC FORCE G095**  
 KBHR E197  
 HOOK'S GALILEO 210G  
 DAM **RFS MISS K73**  
 RFS MISS IMPACT H71



Act BW	85
Adj WW	789
Adj YW	1263
Frame Sc	5.8
ADG	2.98
WDA	3.56
Adj SC	38.0

Genomic Enhanced EPDs

	CE	BW	WW	YW	ADG	MCE	Milk	MWW	Stay	Doc	CW	YG	Marb	BF	REA	API	TI
EPD	13.5	-1.3	86.5	135.6	0.31	8.4	25.9	69.0	22.5	13.7	18.6	-0.27	0.65	-0.041	0.65	184.3	100.6
%	25	15	20	15	15	15	30	20	2	25			3			2	3

- Homo black, homo polled
- Highest API of the Genetic Force sons
- Out of an Impact donor

# THANK YOU!

Thank you to the amazing people who we meet on our journey. We love hearing how our stock work in your herd! We are extremely blessed with family, friends and teammates that support us year after year. A special shout out to Malachi, Matt and Gorde and the rest of the sale crew that are simply the best!

Sons of **CCR COCHISE 4142H**  
SIRE TO LOTS 44-52

The high selling bull in Cow Camp Ranch's 2022 sale. Purchased for use on heifers, this sleek, smooth sided stud is a senior herd sire at Rydeen Farms. The cattle have maternal traits that are incredible. Cochise is a 1/2 blood so his progeny range from 5/8 to 3/4 blood for those looking for a smaller amount of Simmental punch in their herd without sacrificing performance and while maintaining a frame score we like.



**44** | **RFS M144**

Rydeen Farms | **Homo Black** | **Homo Polled** | **3/4 SM 1/4 AN** | **Yearling Bull**  
BD: 3/15/24 | Tattoo: M144 | ASA#: 4369029

SIRE **CCR COCHISE 4142H**  
CCR POUNDER 2045F  
CCR MS CATALYST 4142B  
DAM **RFS MISS HIGH ROAD G77**  
KBHR HIGH ROAD E283  
B93



Act BW	84
Adj WW	779
Adj YW	1145
Frame Sc	5.9
ADG	2.32
WDA	3.30
Adj SC	39.0

Genomic Enhanced EPDs

EPD	CE	BW	WW	YW	ADG	MCE	Milk	MWW	Stay	Doc	CW	YG	Marb	BF	REA	API	TI
	16.9	-4.1	69.1	106.8	0.24	9.6	29.5	64.1	25.9	7.5	15.3	-0.08	0.52	0.007	0.38	173.0	85.5
%	10	4				15	15	40	1				30			4	35

- Excellent 3/4 blood with the highest API of the Cochise sons
- Double digit calving ease with negative birth weight



Lot 44

**45** | **RFS M135**

Rydeen Farms | **Homo Black** | **Homo Polled** | **5/8 SM 3/8 AN** | **Yearling Bull**  
BD: 3/14/24 | Tattoo: M135 | ASA#: 4369020

SIRE **CCR COCHISE 4142H**  
CCR POUNDER 2045F  
CCR MS CATALYST 4142B  
DAM **F179**  
KBHR COMPASS C324  
BRANT A56



Act BW	87
Adj WW	714
Adj YW	1105
Frame Sc	5.7
ADG	2.47
WDA	3.19
Adj SC	39.9

Genomic Enhanced EPDs

EPD	CE	BW	WW	YW	ADG	MCE	Milk	MWW	Stay	Doc	CW	YG	Marb	BF	REA	API	TI
	16.2	-2.6	65.1	103.7	0.24	9.1	20.8	53.4	21.0	7.3	22.5	-0.12	0.46	-0.021	0.40	155.4	79.1
%	15	15				20			3				35			20	60

- High calving ease, low birth weight 5/8 blood
- Granddam is a beautiful female from Ron Brant



Lot 45

**46** | **RFS M161**

Rydeen Farms | **Homo Black** | **Polled** | **1/2 SM 1/2 AN** | **Yearling Bull**  
BD: 3/17/24 | Tattoo: M161 | ASA#: 4369047

SIRE **CCR COCHISE 4142H**  
CCR POUNDER 2045F  
CCR MS CATALYST 4142B  
DAM **E135**  
HART CHECKMARK 4117  
W3

Act BW	95
Adj WW	759
Adj YW	1129
Frame Sc	6.0
ADG	2.34
WDA	3.30
Adj SC	41.1

Genomic Enhanced EPDs

EPD	CE	BW	WW	YW	ADG	MCE	Milk	MWW	Stay	Doc	CW	YG	Marb	BF	REA	API	TI
	12.9	0.2	78.4	128.5	0.31	6.4	28.2	66.4	17.0	8.9	66.2	0.00	0.33	0.000	0.74	136.5	80.6
%	50		40	30	25		20	30	25		2				40	45	55

- Another really balanced 1/2 blood
- Good performance in a composite bull



Lot 46





Lot 47

47

RFS M124

Rydeen Farms **Homo Black | Homo Polled | 5/8 SM 3/8 AN | Yearling Bull**  
BD: 3/11/24 | Tattoo: M124 | ASA#: 4369009

SIRE **CCR POUNDER 2045F**  
**CCR COCHISE 4142H**  
CCR MS CATALYST 4142B  
J BAR J NIGHTRIDE 225Z

DAM **F12**  
D97



Act BW	84
Adj WW	837
Adj YW	1222
Frame Sc	5.9
ADG	2.43
WDA	3.53
Adj SC	40.7

Genomic Enhanced EPDs

EPD	CE	BW	WW	YW	ADG	MCE	Milk	MWW	Stay	Doc	CW	YG	Marb	BF	REA	API	TI
	16.9	-0.6	82.4	137.5	0.34	9.0	25.8	67.0	17.5	10.6	30.8	0.01	0.55	-0.004	0.23	158.3	89.9
%	10	40	30	15	10	20	35	30	20				25			15	20

- Weaned at 837
- 5/8 blood out of nice Nightride dam



Lot 48

48

RFS M216

Rydeen Farms **Homo Black | Homo Polled | 3/4 SM 1/4 AN | Yearling Bull**  
BD: 4/3/24 | Tattoo: M216 | ASA#: 4369102

SIRE **CCR POUNDER 2045F**  
**CCR COCHISE 4142H**  
CCR MS CATALYST 4142B  
ELLINGSON LOAD UP B4022

DAM **D74**  
Y17



Act BW	84
Adj WW	772
Adj YW	1131
Frame Sc	5.5
ADG	2.27
WDA	3.28
Adj SC	38.0

Genomic Enhanced EPDs

EPD	CE	BW	WW	YW	ADG	MCE	Milk	MWW	Stay	Doc	CW	YG	Marb	BF	REA	API	TI
	16.7	0.4	82.4	126.7	0.28	8.9	26.1	67.3	22.6	10.0	15.0	-0.19	0.28	-0.030	0.43	150.7	82.3
%	15		30	35	40	20	35	25	1							25	45

- Well balanced 3/4 blood
- Out of an attractive Load Up dam
- Young calf that made the team



Lot 49

49

RFS M221

Rydeen Farms **Homo Black | Homo Polled | 5/8 SM 3/8 AN | Yearling Bull**  
BD: 4/4/24 | Tattoo: M221 | ASA#: 4369107

SIRE **CCR POUNDER 2045F**  
**CCR COCHISE 4142H**  
CCR MS CATALYST 4142B  
WS PROCLAMATION E202

DAM **RFS MISS PROCLAMATION G47**  
D30



Act BW	86
Adj WW	828
Adj YW	1234
Frame Sc	5.8
ADG	2.57
WDA	3.54
Adj SC	41.0

Genomic Enhanced EPDs

EPD	CE	BW	WW	YW	ADG	MCE	Milk	MWW	Stay	Doc	CW	YG	Marb	BF	REA	API	TI
	13.6	0.5	89.7	143.8	0.34	7.2	24.9	69.8	20.3	14.7	36.4	-0.06	0.54	-0.008	0.47	159.5	92.4
%	40		10	10	10	45	45	20	4	25	40		25			15	15

- 5/8 blood with excellent EPD profile
- Weaned at 828
- Ratios WW 105, YW 106

50 **RFS M193**

Rydeen Farms **Homo Black | Homo Polled | 5/8 SM 1/4 AN 1/8 CS | Yearling Bull**  
BD: 3/25/24 | Tattoo: M193 | ASA#: 4369079

SIRE **CCR POUNDER 2045F**  
**CCR COCHISE 4142H**  
CCR MS CATALYST 4142B  
W/C WIDE TRACK 694Y

DAM **C78**  
W21



Act BW	85
Adj WW	858
Adj YW	1252
Frame Sc	5.7
ADG	2.49
WDA	3.60
Adj SC	42.5

Genomic Enhanced EPDs

EPD	CE	BW	WW	YW	ADG	MCE	Milk	MWW	Stay	Doc	CW	YG	Marb	BF	REA	API	TI	
	13.6	1.4	86.3	142.7	0.35	5.9	29.3	72.4	20.6	11.4	35.0	-0.15	0.20	-0.042	0.47	139.6	81.7	
%	40		20	10	10		15	10	3		45				45		40	50

- 5/8 blood with the highest weaning weight of the Cochise sons
- Ratios WW 109, YW 107

51

RFS M231

Rydeen Farms **Hetero Black | Homo Polled | 3/4 SM 1/4 AN | Yearling Bull**  
BD: 4/7/24 | Tattoo: M231 | ASA#: 4369117

SIRE **CCR POUNDER 2045F**  
**CCR COCHISE 4142H**  
CCR MS CATALYST 4142B  
HSF HIGH ROLLER 12T

DAM **AFC BERNADETTE B28**  
AFC XIPII X35



Act BW	81
Adj WW	836
Adj YW	
Frame Sc	6.0
ADG	2.37
WDA	3.46
Adj SC	40.2

Genomic Enhanced EPDs

EPD	CE	BW	WW	YW	ADG	MCE	Milk	MWW	Stay	Doc	CW	YG	Marb	BF	REA	API	TI
	16.7	0.1	87.3	139.7	0.33	8.8	31.0	74.6	20.6	10.1	43.5	-0.12	0.13	-0.037	0.54	141.7	82.4
%	15	50	15	15	15	25	10	10	3		20					40	45

- 3/4 blood with excellent individual performance-weaned at 836
- Only Cochise baldy
- Youngest Cochise son in the offering

**52****RFS M154**Rydeen Farms **Homo Black | Homo Polled | 1/2 SM 1/2 AN | Yearling Bull**  
BD: 3/17/24 | Tattoo: M154 | ASA#: 4369039

SIRE **CCR POUNDER 2045F**  
**CCR COCHISE 4142H**  
CCR MS CATALYST 4142B  
HART FINAL ANSWER 0048

DAM **C122**  
RFS MISS ACCORD A16



Act BW	84
Adj WW	777
Adj YW	1126
Frame Sc	5.8
ADG	2.20
WDA	3.28
Adj SC	39.1

## Genomic Enhanced EPDs

EPD	CE	BW	WW	YW	ADG	MCE	Milk	MWW	Stay	Doc	CW	YG	Marb	BF	REA	API	TI
	13.6	-1.4	70.5	109.0	0.24	8.1	26.5	61.8	22.7	8.2	27.6	0.10	0.43	0.018	0.08	151.8	79.1
%	40	25				30	30		1				40			25	60

- Well-balanced 1/2 blood
- Dam is a 10 year old female that calves in a 367 day interval

**Lot 52**

YEARLING BULLS



*Sons of* **KBHR GLOBAL J138**  
SIRE TO LOTS 53, 54, 56

The KBHR Global sons were well received in our 2024 sale with one of his son's going to ST Genetics. However, his legacy may be his females. We appreciate his maternal excellence and vigorous calves at birth. We have a large selection of excellent Global females in the bred division.

**53****RFS M179**Rydeen Farms **Homo Black | Homo Polled | PB SM | Yearling Bull**  
BD: 3/21/24 | Tattoo: M179 | ASA#: 4369065

SIRE **WS PROCLAMATION E202**  
**KBHR GLOBAL J138**  
BAR CK MS X38 106Z  
LCDR IMPACT 134F

DAM **RFS MISS H67**  
BCLR MISS BALDY E704



Act BW	84
Adj WW	817
Adj YW	1154
Frame Sc	5.8
ADG	2.13
WDA	3.27
Adj SC	39.8

## Genomic Enhanced EPDs

EPD	CE	BW	WW	YW	ADG	MCE	Milk	MWW	Stay	Doc	CW	YG	Marb	BF	REA	API	TI
	14.8	1.0	84.5	136.2	0.32	8.1	22.0	64.2	20.5	13.5	22.6	-0.32	0.37	-0.062	0.68	162.7	89.9
%	15	45	30	15	10	20		40	5	30			20			10	20

- Weaned at 817
- Dam is a full sib to RFS Herald and RFS Heavy Hitter

**Lot 53****54****RFS M51**Rydeen Farms **Homo Black | Homo Polled | 3/4 SM 1/4 AN | Yearling Bull**  
BD: 2/27/24 | Tattoo: M51 | ASA#: 4368937

SIRE **WS PROCLAMATION E202**  
**KBHR GLOBAL J138**  
BAR CK MS X38 106Z  
CLRS CONSTITUTION 311 C

DAM **RFS MISS FARRAH F79**  
B130



Act BW	90
Adj WW	807
Adj YW	1222
Frame Sc	5.8
ADG	2.61
WDA	3.51
Adj SC	38.0

## Genomic Enhanced EPDs

EPD	CE	BW	WW	YW	ADG	MCE	Milk	MWW	Stay	Doc	CW	YG	Marb	BF	REA	API	TI
	14.2	-0.3	82.7	138.4	0.35	9.4	25.3	66.6	19.7	17.9	39.8	-0.25	0.43	-0.053	0.77	153.9	87.7
%	35	45	25	15	10	15	40	30	10	5	30	45	40	30	35	20	30

- 3/4 blood
- Ratios BW 102, WW 102, YW 104
- Weaned at 807

**Lot 54**





Lot 55



Lot 56

## 55 RFS M71

Rydeen Farms **Homo Black | Homo Polled | PB SM | Yearling Bull**  
 BD: 3/1/24 | Tattoo: M71 | ASA#: 4368987

SIRE **RFS HERALD H104**  
 LCDR IMPACT 134F  
 BCLR MISS BALDY E704  
 EGL FIRESTEEL 103F

DAM **RFS MISS J13**  
 LCDR MS GISELLE 8G

Act BW	89
Adj WW	825
Adj YW	1188
Frame Sc	5.8
ADG	2.29
WDA	3.42
Adj SC	36.2

Genomic Enhanced EPDs

CE	BW	WW	YW	ADG	MCE	Milk	MWW	Stay	Doc	CW	YG	Marb	BF	REA	API	TI
10.1	1.5	86.9	139.2	0.33	2.8	27.0	70.3	16.3	13.4	45.2	-0.31	0.33	-0.050	1.04	145.9	89.5
%		20	15	10		20	20	45	30	10		25		20	30	20

- One of Lois' favorite bulls
- Beautiful RFS Herald son
- Performance pedigree

## 56 RFS M101

Rydeen Farms **Homo Black | Homo Polled | PB SM | Yearling Bull**  
 BD: 3/5/24 | Tattoo: M101 | ASA#: 4368986

SIRE **KBHR GLOBAL J138**  
 WS PROCLAMATION E202  
 BAR CK MS X38 106Z  
 KBHR NEXT LEVEL E206

DAM **RFS MISS KIRBY K234**  
 F154

Act BW	86
Adj WW	767
Adj YW	1100
Frame Sc	5.7
ADG	2.12
WDA	2.96
Adj SC	38.4

Genomic Enhanced EPDs

CE	BW	WW	YW	ADG	MCE	Milk	MWW	Stay	Doc	CW	YG	Marb	BF	REA	API	TI	
13.1	-1.1	80.6	133.0	0.33	8.6	23.8	64.1	20.7	17.8	39.4	-0.15	0.47	-0.049	0.49	168.4	92.0	
%		30	15	40	20	10	15	45	40	4	3	15		15		10	15

- Out of a first calf heifer
- Excellent EPD profile

## 57 RFS M125

Rydeen Farms **Homo Black | Homo Polled | 3/4 SM 1/4 AN | Yearling Bull**  
 BD: 3/11/24 | Tattoo: M125 | ASA#: 4369010

SIRE **ER PHOENIX H417**  
 ERI FLIGHT F402  
 RFS MISS ETTA E92  
 CLRS CONSTITUTION 311 C

DAM **E29**  
 RFS MISS CASEY C41

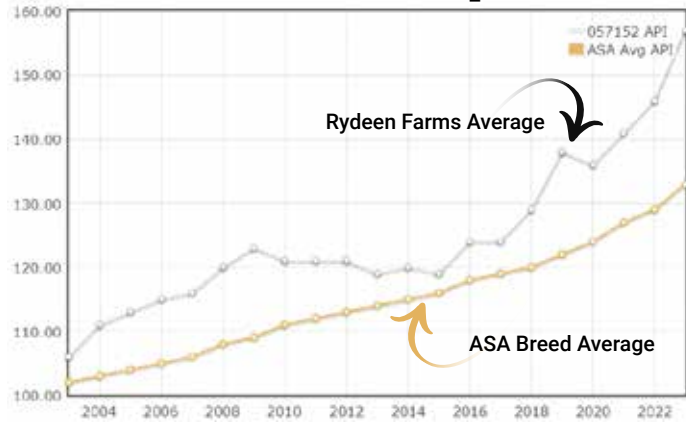
Act BW	86
Adj WW	755
Adj YW	1082
Frame Sc	5.5
ADG	2.07
WDA	3.15
Adj SC	35.7

Genomic Enhanced EPDs

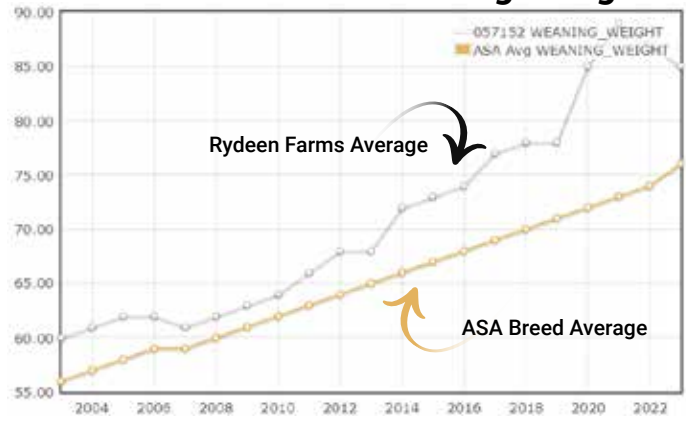
CE	BW	WW	YW	ADG	MCE	Milk	MWW	Stay	Doc	CW	YG	Marb	BF	REA	API	TI	
16.4	0.3	85.3	144.4	0.37	8.3	19.8	62.3	16.1	17.6	48.5	-0.33	0.36	-0.047	1.18	146.7	87.2	
%		15		20	10	4	30		50	35	10	15	20	45	2	30	30

- Nice 3/4 blood out of Constitution dam
- Balanced EPD profile

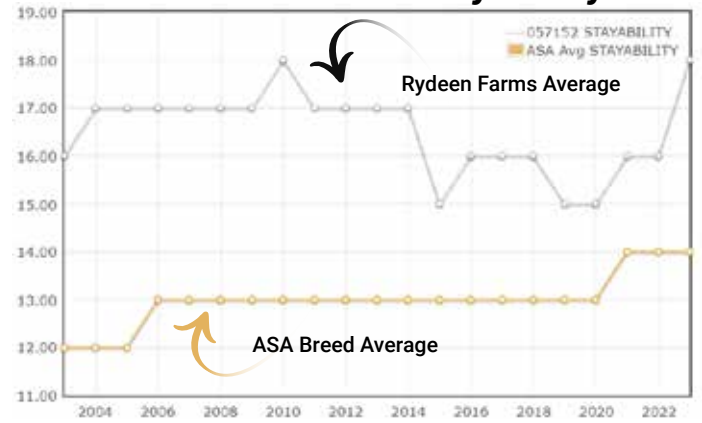
### Genetic Trend in All Purpose Index



### Genetic Trend in Weaning Weight



### Genetic Trend in Stayability



*Sons of* **WS GADGET 40G**  
SIRE TO LOTS 58-67

If you have been following our program, you are well aware of our senior herd sire, WS Gadget. He is a dark mahogany red, thick made breeding machine. His sons and daughters have gone to excellent herds throughout the country with two of his daughters topping our 2023 sale. We flushed our well-known donor, Electra E88 to Gadget and also our new red rising star, Genome 979G and they produced two sets of full brothers that are hard to fault. Lots 58-63 are full sibs. Lots 64-67 are full sibs. These purebreds all have a terminal index north of 100 and top percentile API numbers.



**WS Gadget 40G**



**Lot 58**



**CLRS Genome 40G**  
Dam of Lots 58-63



**WS Electra E88**  
Dam of Lots 64-67



**Lot 59**

*Full Sibs!* **LOTS 58-63**

Some are ACE, certified heifer bulls and all have incredible EPD profiles to choose from with excellent carcass and weaning weights!

**58** | **RFS M58**

Rydeen Farms | Red | Homo Polled | PB SM | Yearling Bull  
BD: 2/28/24 | Tattoo: M58 | ASA#: 4368944

SIRE **WS GADGET 40G** (ACE) | KBHR SNIPER E036  
WS EMOTION E127  
DAM **CLRS GENOME 979G** (G+) | IR IMPERIAL D948  
K M J MS RUBICON E353

Act BW	91
Adj WW	837
Adj YW	1350
Frame Sc	6.0
ADG	3.24
WDA	3.81
Adj SC	38.3

Genomic Enhanced EPDs

CE	BW	WW	YW	ADG	MCE	Milk	MWW	Stay	Doc	CW	YG	Marb	BF	REA	API	TI
18.6	-2.9	87.5	137.6	0.31	11.1	19.9	63.5	16.7	14.8	42.0	-0.29	0.90	-0.039	1.03	196.6	109.5
%	2	3	20	15	15	2	45	40	20	15		1		20	1	1

**59** | **RFS M26**

Rydeen Farms | Red | Homo Polled | PB SM | Yearling Bull  
BD: 2/24/24 | Tattoo: M26 | ASA#: 4368914

SIRE **WS GADGET 40G** (ACE) | KBHR SNIPER E036  
WS EMOTION E127  
DAM **CLRS GENOME 979G** (G+) | IR IMPERIAL D948  
K M J MS RUBICON E353

Act BW	93
Adj WW	853
Adj YW	1380
Frame Sc	6.0
ADG	3.32
WDA	3.89
Adj SC	35.4

Genomic Enhanced EPDs

CE	BW	WW	YW	ADG	MCE	Milk	MWW	Stay	Doc	CW	YG	Marb	BF	REA	API	TI
15.5	0.7	98.2	151.4	0.33	9.4	19.9	68.9	15.5	16.4	58.5	-0.34	0.59	-0.063	1.20	170.5	103.5
%	10	40	4	4	10	10	25		10	1		5		5	5	2



# Full Sibs! LOTS 58-63

Some are ACE, certified heifer bulls and all have incredible EPD profiles to choose from with excellent carcass and weaning weights!



Lot 60

## 60 RFS M24

Rydeen Farms

Red | Homo Polled | PB SM | Yearling Bull  
BD: 2/24/24 | Tattoo: M24 | ASA#: 4368912

SIRE **WS GADGET 40G**  
KBHR SNIPER E036  
WS EMOTION E127  
DAM **CLRS GENOME 979G**  
IR IMPERIAL D948  
K M J MS RUBICON E353



Act BW	75
Adj WW	744
Adj YW	1175
Frame Sc	6.0
ADG	2.72
WDA	3.33
Adj SC	35.9



Genomic Enhanced EPDs

CE	BW	WW	YW	ADG	MCE	Milk	MWW	Stay	Doc	CW	YG	Marb	BF	REA	API	TI
20.6	-3.8	81.4	128.7	0.30	12.2	19.9	60.5	20.6	18.7	29.2	-0.30	0.75	-0.047	0.84	198.1	103.5
%	1	1	35	25	20	1		5	2	45		2			1	2



Lot 61

## 61 RFS M45

Rydeen Farms

Red | Homo Polled | PB SM | Yearling Bull  
BD: 2/26/24 | Tattoo: M45 | ASA#: 4368932

SIRE **WS GADGET 40G**  
KBHR SNIPER E036  
WS EMOTION E127  
DAM **CLRS GENOME 979G**  
IR IMPERIAL D948  
K M J MS RUBICON E353



Act BW	85
Adj WW	739
Adj YW	1204
Frame Sc	6.0
ADG	2.93
WDA	3.40
Adj SC	36.0



Genomic Enhanced EPDs

CE	BW	WW	YW	ADG	MCE	Milk	MWW	Stay	Doc	CW	YG	Marb	BF	REA	API	TI
18.4	-0.6	85.0	130.6	0.29	11.3	19.9	62.3	13.8	17.0	36.5	-0.31	0.68	-0.048	0.94	172.9	99.6
%	2	20	25	25	25	1	50		5	25		3		35	4	4



Lot 62

## 62 RFS M42

Rydeen Farms

Red | Homo Polled | PB SM | Yearling Bull  
BD: 2/26/24 | Tattoo: M42 | ASA#: 4368929

SIRE **WS GADGET 40G**  
KBHR SNIPER E036  
WS EMOTION E127  
DAM **CLRS GENOME 979G**  
IR IMPERIAL D948  
K M J MS RUBICON E353



Act BW	90
Adj WW	694
Adj YW	1128
Frame Sc	5.9
ADG	2.74
WDA	3.19
Adj SC	35.5

Genomic Enhanced EPDs

CE	BW	WW	YW	ADG	MCE	Milk	MWW	Stay	Doc	CW	YG	Marb	BF	REA	API	TI
16.6	-0.1	86.7	139.9	0.33	9.9	19.9	63.1	16.1	15.6	50.0	-0.25	0.71	-0.055	0.88	177.5	100.8
%	5	25	20	15	10	5	45	45	15	4		2		50	3	3



Lot 63

## 63 RFS M44

Rydeen Farms

Red | Homo Polled | PB SM | Yearling Bull  
BD: 2/26/24 | Tattoo: M44 | ASA#: 4368931

SIRE **WS GADGET 40G**  
KBHR SNIPER E036  
WS EMOTION E127  
DAM **CLRS GENOME 979G**  
IR IMPERIAL D948  
K M J MS RUBICON E353



Act BW	87
Adj WW	789
Adj YW	1219
Frame Sc	6.0
ADG	2.71
WDA	3.47
Adj SC	37.0

Genomic Enhanced EPDs

CE	BW	WW	YW	ADG	MCE	Milk	MWW	Stay	Doc	CW	YG	Marb	BF	REA	API	TI
14.7	-0.3	88.0	138.3	0.31	8.5	19.9	63.8	15.1	18.3	44.9	-0.35	0.76	-0.074	0.98	176.6	103.1
%	15	25	20	15	15		45		2	10		2	50	30	3	2



# Full Sibs! LOTS 64-67

With Electra E88 in the pedigree, you know the progeny will be flat out good. Deep bodied, dark red, and fertile, the Gadget x Electra E88 is a tried and true winning combination. Check them out!

YEARLING BULLS



Lot 64



Lot 65



Lot 66



Lot 67

## 64

## RFS M36

Rydeen Farms | Red | Homo Polled | PB SM | Yearling Bull  
BD: 2/25/24 | Tattoo: M36 | ASA#: 4368923

SIRE KBHR SNIPER E036  
**WS GADGET 40G**  
WS EMOTION E127  
CDI VERDICT 220Y  
DAM **WS ELECTRA E88**  
HSF MISS SKY 87U



Act BW	95
Adj WW	826
Adj YW	1220
Frame Sc	6.0
ADG	2.48
WDA	3.49
Adj SC	37.9

### Genomic Enhanced EPDs

EPD	CE	BW	WW	YW	ADG	MCE	Milk	MWW	Stay	Doc	CW	YG	Marb	BF	REA	API	TI
	16.9	-0.7	100.7	150.1	0.31	9.7	20.7	70.9	20.3	18.9	43.4	-0.27	0.43	-0.054	0.85	175.3	102.3
%	4	20	2	4	15	10		15	10	2	10		15			4	2

## 65

## RFS M66

Rydeen Farms | Red | Homo Polled | PB SM | Yearling Bull  
BD: 2/29/24 | Tattoo: M66 | ASA#: 4368952

SIRE KBHR SNIPER E036  
**WS GADGET 40G**  
WS EMOTION E127  
CDI VERDICT 220Y  
DAM **WS ELECTRA E88**  
HSF MISS SKY 87U



Act BW	90
Adj WW	708
Adj YW	1116
Frame Sc	6.0
ADG	2.57
WDA	3.17
Adj SC	38.1

### Genomic Enhanced EPDs

EPD	CE	BW	WW	YW	ADG	MCE	Milk	MWW	Stay	Doc	CW	YG	Marb	BF	REA	API	TI
	21.3	-5.6	83.9	125.1	0.26	12.4	20.7	62.6	20.2	16.1	17.9	-0.16	0.55	-0.028	0.41	189.0	101.0
%	1	1	30	35	40	1		50	10	10			10			1	3

## 66

## RFS M46

Rydeen Farms | Red | Homo Polled | PB SM | Yearling Bull  
BD: 2/26/24 | Tattoo: M46 | ASA#: 4368933

SIRE KBHR SNIPER E036  
**WS GADGET 40G**  
WS EMOTION E127  
CDI VERDICT 220Y  
DAM **WS ELECTRA E88**  
HSF MISS SKY 87U



Act BW	92
Adj WW	727
Adj YW	1047
Frame Sc	6.0
ADG	2.02
WDA	3.01
Adj SC	36.0

### Genomic Enhanced EPDs

EPD	CE	BW	WW	YW	ADG	MCE	Milk	MWW	Stay	Doc	CW	YG	Marb	BF	REA	API	TI
	15.6	-1.9	96.7	149.9	0.33	8.7	20.7	68.9	20.8	19.2	45.4	-0.14	0.56	-0.037	0.62	183.0	104.3
%	10	10	5	4	10	15		25	4	2	10		10			2	2

## 67

## RFS M80

Rydeen Farms | Red | Homo Polled | PB SM | Yearling Bull  
BD: 3/2/24 | Tattoo: M80 | ASA#: 4368966

SIRE KBHR SNIPER E036  
**WS GADGET 40G**  
WS EMOTION E127  
CDI VERDICT 220Y  
DAM **WS ELECTRA E88**  
HSF MISS SKY 87U



Act BW	92
Adj WW	756
Adj YW	1172
Frame Sc	6.0
ADG	2.62
WDA	3.34
Adj SC	38.3

### Genomic Enhanced EPDs

EPD	CE	BW	WW	YW	ADG	MCE	Milk	MWW	Stay	Doc	CW	YG	Marb	BF	REA	API	TI
	17.1	-3.2	93.1	141.7	0.30	9.7	20.7	67.1	20.4	17.4	29.9	-0.16	0.49	-0.028	0.55	180.9	102.1
%	4	2	10	10	20	10		30	5	4	45		10			2	3





GW Copperhead 919G on summer pasture



Lot 68



Lot 69



Lot 70

*Sons of* **GW COPPERHEAD 919G**  
SIRE TO LOTS 68-70

The popular GW Copperhead 919G bull was used as our herd sire and produced some very nice 3/4 bloods for us. They are dark red, easy moving type of cattle. All have the G+ rating.

**68** | **RFS M137**

Rydeen Farms | Red | Homo Polled | 3/4 SM 5/32 AR 3/32 AN | Yearling Bull  
BD: 3/14/24 | Tattoo: M137 | ASA#: 4369022

SIRE GW MOVIN ON 183C  
**GW COPPERHEAD 919G**  
GW MISS DIRCT DRIVE 932E  
RFS FORCE F35  
DAM **RFS MISS H102**  
D129



Act BW	88
Adj WW	729
Adj YW	1209
Frame Sc	5.8
ADG	3.04
WDA	3.41
Adj SC	36.9

Genomic Enhanced EPDs																	
CE	BW	WW	YW	ADG	MCE	Milk	MWW	Stay	Doc	CW	YG	Marb	BF	REA	API	TI	
EPD	13.2	-3.7	77.6	120.7	0.27	9.1	21.9	60.6	15.5	19.3	15.4	-0.28	0.41	-0.049	0.59	145.3	87.2
%	45	10	45	45	50	20			45	2		35	45	45		35	30

**69** | **RFS M126**

Rydeen Farms | Red | Homo Polled | 3/4 SM 5/32 AR 3/32 AN | Yearling Bull  
BD: 3/11/24 | Tattoo: M126 | ASA#: 4369011

SIRE GW MOVIN ON 183C  
**GW COPPERHEAD 919G**  
GW MISS DIRCT DRIVE 932E  
MRL RINGMAN 112Z  
DAM **B36**  
Y142



Act BW	85
Adj WW	749
Adj YW	1169
Frame Sc	6.0
ADG	2.66
WDA	3.33
Adj SC	39.2

Genomic Enhanced EPDs																	
CE	BW	WW	YW	ADG	MCE	Milk	MWW	Stay	Doc	CW	YG	Marb	BF	REA	API	TI	
EPD	13.6	-0.9	72.5	113.5	0.26	10.0	29.0	65.2	17.1	19.5	26.9	-0.38	0.44	-0.086	0.74	144.5	82.9
%	40	35			10	15	35	25	2		10	40	4	40	35	45	

**70** | **RFS M151**

Rydeen Farms | Red | Homo Polled | 3/4 SM 5/32 AR 3/32 AN | Yearling Bull  
BD: 3/16/24 | Tattoo: M151 | ASA#: 4369036

SIRE GW MOVIN ON 183C  
**GW COPPERHEAD 919G**  
GW MISS DIRCT DRIVE 932E  
GW REDESTINED 642X  
DAM **B26**  
RFS MISS Z30



Act BW	78
Adj WW	705
Adj YW	1136
Frame Sc	5.7
ADG	2.72
WDA	3.25
Adj SC	37.5

Genomic Enhanced EPDs																	
CE	BW	WW	YW	ADG	MCE	Milk	MWW	Stay	Doc	CW	YG	Marb	BF	REA	API	TI	
EPD	14.8	-3.6	67.8	105.0	0.23	10.6	22.8	56.6	17.0	17.6	27.3	-0.50	0.55	-0.080	1.16	155.3	86.0
%	25	10			10				25	10		1	25	10	3	20	35



# 71

# RFS M17

Rydeen Farms

**Red | Hetero Polled | PB SM | Yearling Bull**  
 BD: 2/23/24 | Tattoo: M17 | ASA#: 4368905

**SIRE** HOOK'S EMPIRE 61E  
**WS JAM-PACKED 88J**  
 WS ETIQUETTE E131  
 WS GADGET 40G  
**DAM** **RFS MISS J225**  
 RFS MISS Z155



Act BW	83
Adj WW	730
Adj YW	1201
Frame Sc	6.0
ADG	2.97
WDA	3.27
Adj SC	37.3

**Genomic Enhanced EPDs**

	CE	BW	WW	YW	ADG	MCE	Milk	MWW	Stay	Doc	CW	YG	Marb	BF	REA	API	TI
EPD	13.3	-0.1	89.3	138.2	0.31	7.4	20.1	64.7	21.4	13.1	21.6	-0.42	0.31	-0.077	0.86	162.9	92.4
%	25	25	15	15	15	30		40	3	35		40	30	50		10	15

- Only Jam-Packed bull in the sale
- Carries the ATM rating



Lot 71

YEARLING BULLS

# 72

# RFS M112

Rydeen Farms

**Red | Homo Polled | PB SM | Yearling Bull**  
 BD: 3/7/24 | Tattoo: M112 | ASA#: 4368997

**SIRE** KBHR GENETIC FORCE G095  
**RFS GENETIC VISION K162**  
 RFS MISS H49  
 WS GADGET 40G  
**DAM** **RFS MISS K1**  
 RFS MISS H172



Act BW	87
Adj WW	721
Adj YW	1072
Frame Sc	5.6
ADG	2.22
WDA	2.87
Adj SC	36.5

**Genomic Enhanced EPDs**

	CE	BW	WW	YW	ADG	MCE	Milk	MWW	Stay	Doc	CW	YG	Marb	BF	REA	API	TI
EPD	18.2	-1.0	89.3	136.3	0.29	10.0	21.3	65.8	15.2	17.3	34.0	-0.31	0.37	-0.051	0.89	160.1	94.8
%	2	15	15	15	25	4		35		4	30		20		45	15	10

- The only ACE certified of this group
- Out of a first calf heifer



Lot 72

# 73

# RFS M140

Rydeen Farms

**Red | Homo Polled | PB SM | Yearling Bull**  
 BD: 3/14/24 | Tattoo: M140 | ASA#: 4369025

**SIRE** KBHR GENETIC FORCE G095  
**RFS GENETIC VISION K162**  
 RFS MISS H49  
 WS GADGET 40G  
**DAM** **RFS MISS K201**  
 RFS MISS HILARY H110



Act BW	90
Adj WW	801
Adj YW	1256
Frame Sc	6.0
ADG	2.87
WDA	3.36
Adj SC	38.9

**Genomic Enhanced EPDs**

	CE	BW	WW	YW	ADG	MCE	Milk	MWW	Stay	Doc	CW	YG	Marb	BF	REA	API	TI
EPD	11.7	1.6	106.1	159.0	0.33	7.1	21.4	74.3	14.5	15.3	41.9	-0.43	0.19	-0.078	1.16	143.0	97.2
%	50		1	2	10	30		10		15	15	35	45	50	10	35	10

- The only ATM of this group
- Ratios BW 110, WW102, YW 107
- Weaned at 801



Lot 73





# Age Advantage

## 18-MONTH-OLD BULLS

18 MONTH OLD BULLS



Lot 74

<b>74</b>	<b>L319</b>																																																			
Rydeen Farms	<b>Red   Homo Polled   PB SM   18-Month-Old Bull</b> BD: 9/2/23   Tattoo: L319   ASA#: 4341799																																																			
SIRE	KBHR SNIPER E036 <b>WS GADGET 40G</b> WS EMOTION E127 ELLINGSON COMPLETE A358																																																			
DAM	<b>C176</b> X14																																																			
Genomic Enhanced EPDs																																																				
<table border="1"> <thead> <tr> <th>CE</th><th>BW</th><th>WW</th><th>YW</th><th>ADG</th><th>MCE</th><th>Milk</th><th>MWW</th><th>Stay</th><th>Doc</th><th>CW</th><th>YG</th><th>Marb</th><th>BF</th><th>REA</th><th>API</th><th>TI</th> </tr> </thead> <tbody> <tr> <td>14.1</td><td>-0.8</td><td>79.3</td><td>112.2</td><td>0.21</td><td>9.6</td><td>18.0</td><td>57.6</td><td>13.4</td><td>14.6</td><td>35.5</td><td>-0.33</td><td>-0.01</td><td>-0.065</td><td>0.87</td><td>124.6</td><td>77.9</td> </tr> <tr> <td>%</td><td>20</td><td>15</td><td>45</td><td></td><td>10</td><td></td><td></td><td></td><td>20</td><td>25</td><td></td><td></td><td></td><td>50</td><td>65</td><td>60</td> </tr> </tbody> </table>		CE	BW	WW	YW	ADG	MCE	Milk	MWW	Stay	Doc	CW	YG	Marb	BF	REA	API	TI	14.1	-0.8	79.3	112.2	0.21	9.6	18.0	57.6	13.4	14.6	35.5	-0.33	-0.01	-0.065	0.87	124.6	77.9	%	20	15	45		10				20	25				50	65	60
CE	BW	WW	YW	ADG	MCE	Milk	MWW	Stay	Doc	CW	YG	Marb	BF	REA	API	TI																																				
14.1	-0.8	79.3	112.2	0.21	9.6	18.0	57.6	13.4	14.6	35.5	-0.33	-0.01	-0.065	0.87	124.6	77.9																																				
%	20	15	45		10				20	25				50	65	60																																				
Act BW	90																																																			
Adj WW	619																																																			
Act Wt 1/6/25	1350																																																			
Frame Sc	6.0																																																			
Act SC	43.0																																																			

- 10 year old dam is still in the herd
- Good all around herd sire prospect



Lot 75

<b>75</b>	<b>L303</b>																																																			
Rydeen Farms	<b>Hetero Black   Homo Polled   3/4 SM 1/4 AN   18-Month-Old Bull</b> BD: 8/26/23   Tattoo: L303   ASA#: 4341782																																																			
SIRE	TRPH RRR NIGHTFORCE B30 <b>KBHR GENETIC FORCE G095</b> KBHR E197 CONNEALY CONFIDENCE PLUS																																																			
DAM	<b>J343</b> RFS MISS PROCLAMATION G80																																																			
Genomic Enhanced EPDs																																																				
<table border="1"> <thead> <tr> <th>CE</th><th>BW</th><th>WW</th><th>YW</th><th>ADG</th><th>MCE</th><th>Milk</th><th>MWW</th><th>Stay</th><th>Doc</th><th>CW</th><th>YG</th><th>Marb</th><th>BF</th><th>REA</th><th>API</th><th>TI</th> </tr> </thead> <tbody> <tr> <td>12.7</td><td>-0.3</td><td>73.8</td><td>117.2</td><td>0.27</td><td>5.8</td><td>26.1</td><td>62.9</td><td>19.0</td><td>13.0</td><td>5.9</td><td>-0.10</td><td>0.83</td><td>0.030</td><td>0.51</td><td>166.4</td><td>90.9</td> </tr> <tr> <td>%</td><td>50</td><td>45</td><td>50</td><td>50</td><td></td><td>35</td><td>45</td><td>10</td><td>45</td><td></td><td></td><td>5</td><td></td><td></td><td>10</td><td>20</td> </tr> </tbody> </table>		CE	BW	WW	YW	ADG	MCE	Milk	MWW	Stay	Doc	CW	YG	Marb	BF	REA	API	TI	12.7	-0.3	73.8	117.2	0.27	5.8	26.1	62.9	19.0	13.0	5.9	-0.10	0.83	0.030	0.51	166.4	90.9	%	50	45	50	50		35	45	10	45			5			10	20
CE	BW	WW	YW	ADG	MCE	Milk	MWW	Stay	Doc	CW	YG	Marb	BF	REA	API	TI																																				
12.7	-0.3	73.8	117.2	0.27	5.8	26.1	62.9	19.0	13.0	5.9	-0.10	0.83	0.030	0.51	166.4	90.9																																				
%	50	45	50	50		35	45	10	45			5			10	20																																				
Act BW	90																																																			
Adj WW	653																																																			
Act Wt 1/6/25	1300																																																			
Frame Sc	5.7																																																			
Act SC	39.0																																																			

- Hetero black 3/4 blood with excellent marbling
- Outcross pedigree



Lot 76

<b>76</b>	<b>L305</b>																																																			
Rydeen Farms	<b>Homo Black   Homo Polled   PB SM   18-Month-Old Bull</b> BD: 8/28/23   Tattoo: L305   ASA#: 4341784																																																			
SIRE	HOOK'S EAGLE 6E <b>TJ GOLD 274G</b> TJ 12C TNT DUAL FOCUS T249																																																			
DAM	<b>D91</b> BRANT AMELIA A52																																																			
Genomic Enhanced EPDs																																																				
<table border="1"> <thead> <tr> <th>CE</th><th>BW</th><th>WW</th><th>YW</th><th>ADG</th><th>MCE</th><th>Milk</th><th>MWW</th><th>Stay</th><th>Doc</th><th>CW</th><th>YG</th><th>Marb</th><th>BF</th><th>REA</th><th>API</th><th>TI</th> </tr> </thead> <tbody> <tr> <td>15.3</td><td>-0.6</td><td>72.6</td><td>110.1</td><td>0.23</td><td>8.0</td><td>19.0</td><td>55.2</td><td>16.5</td><td>10.7</td><td>10.9</td><td>-0.32</td><td>0.44</td><td>-0.047</td><td>0.64</td><td>155.6</td><td>85.4</td> </tr> <tr> <td>%</td><td>10</td><td>20</td><td></td><td></td><td>20</td><td></td><td></td><td>40</td><td></td><td></td><td></td><td>15</td><td></td><td></td><td>20</td><td>35</td> </tr> </tbody> </table>		CE	BW	WW	YW	ADG	MCE	Milk	MWW	Stay	Doc	CW	YG	Marb	BF	REA	API	TI	15.3	-0.6	72.6	110.1	0.23	8.0	19.0	55.2	16.5	10.7	10.9	-0.32	0.44	-0.047	0.64	155.6	85.4	%	10	20			20			40				15			20	35
CE	BW	WW	YW	ADG	MCE	Milk	MWW	Stay	Doc	CW	YG	Marb	BF	REA	API	TI																																				
15.3	-0.6	72.6	110.1	0.23	8.0	19.0	55.2	16.5	10.7	10.9	-0.32	0.44	-0.047	0.64	155.6	85.4																																				
%	10	20			20			40				15			20	35																																				
Act BW	89																																																			
Adj WW	635																																																			
Act Wt 1/6/25	1275																																																			
Frame Sc	5.6																																																			
Act SC	38.5																																																			

- Double digit calving ease and good economic indexes
- Nine year old dam is still working in the herd



Lot 77

77

L306

Rydeen Farms

Homo Black | Homo Polled | PB SM | 18-Month-Old Bull  
BD: 8/28/23 | Tattoo: L306 | ASA#: 4341786

WS PROCLAMATION E202

SIRE **KBHR GLOBAL J138**

BAR CK MS X38 106Z

LCDR IMPACT 134F

DAM **RFS MISS H327**

W86



Act BW	85
Adj WW	600
Act Wt 1/6/25	1310
Frame Sc	5.5
Act SC	39.0

Genomic Enhanced EPDs

	CE	BW	WW	YW	ADG	MCE	Milk	MWW	Stay	Doc	CW	YG	Marb	BF	REA	API	TI
EPD	15.8	-0.4	76.7	122.8	0.29	9.9	23.0	61.3	22.5	16.9	27.1	-0.37	0.34	-0.077	0.78	165.3	86.4
%	10	20	40	25	5				2	10			25	50		10	30

- Out of an Impact daughter
- Balanced EPD profile

**78** | **L326**  
Rydeen Farms | Homo Black | Homo Polled | PB SM | 18-Month-Old Bull  
BD: 9/6/23 | Tattoo: L326 | ASA#: 4341806

TRIPLE C SINGLETARY S3H

SIRE **CCR COWBOY CUT 5048Z**

CCR MS 4045 TIME 7322T

SVF ALLEGIANCE Y802

DAM **E262**

RFS MISS A203



Act BW	78
Adj WW	611
Act Wt 1/6/25	1290
Frame Sc	6.0
Act SC	42.0

Genomic Enhanced EPDs

	CE	BW	WW	YW	ADG	MCE	Milk	MWW	Stay	Doc	CW	YG	Marb	BF	REA	API	TI
EPD	14.7	1.8	86.9	127.8	0.26	8.1	18.9	62.3	14.6	15.1	42.9	-0.31	0.28	-0.057	0.96	142.8	86.9
%	15		20	30	40	20		50		15	10		30		35	35	30

- Great all around bull out of a productive Allegiance dam
- Dam has produced five calves in a 367 day interval



Lot 78

**79** | **L343**  
Rydeen Farms | Homo Black | Homo Polled | PB SM | 18-Month-Old Bull  
BD: 9/23/23 | Tattoo: L343 | ASA#: 4341822

ERI FLIGHT F402

SIRE **ER PHOENIX H417**

RFS MISS ETTA E92

BBS TRUE JUSTICE B10

DAM **F242**

D223



Act BW	90
Adj WW	684
Act Wt 1/6/25	1285
Frame Sc	6.0
Act SC	40.0

Genomic Enhanced EPDs

	CE	BW	WW	YW	ADG	MCE	Milk	MWW	Stay	Doc	CW	YG	Marb	BF	REA	API	TI
EPD	14.7	0.3	80.1	119.0	0.24	7.9	24.9	64.8	15.6	12.7	44.4	-0.48	0.16	-0.088	1.26	139.8	83.2
%	15	35	40	45		20	35	40	50	40	10	15		30	3	40	40

- Well balanced EPD profile
- Outcross pedigree



Lot 79

**80** | **L312**  
Rydeen Farms | Homo Black | Homo Polled | 3/4 SM 5/32 CS 3/32 AN | 18-Month-Old Bull  
BD: 8/30/23 | Tattoo: L312 | ASA#: 4341792

WS PROCLAMATION E202

SIRE **KBHR GLOBAL J138**

BAR CK MS X38 106Z

KRJ HZN DIRECT IMPACT F805

DAM **J327**

G256



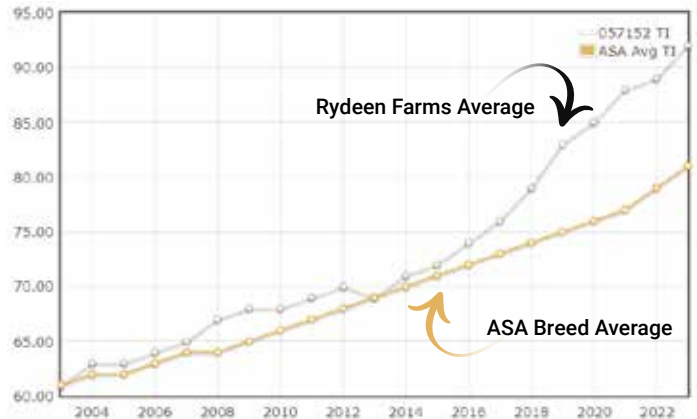
Act BW	90
Adj WW	686
Act Wt 1/6/25	1340
Frame Sc	6.0
Act SC	41.0

Genomic Enhanced EPDs

	CE	BW	WW	YW	ADG	MCE	Milk	MWW	Stay	Doc	CW	YG	Marb	BF	REA	API	TI
EPD	13.6	1.2	92.3	148.3	0.35	7.5	21.8	67.9	21.1	15.5	43.0	-0.16	0.60	-0.033	0.67	164.9	94.8
%	40		10	10	10	40		25	3	20	25		20			10	10

- 3/4 blood with excellent growth and carcass traits
- Excellent maternal qualities

Genetic Trend in Terminal Index





# Bred Heifer Division



Lot 81



Lot 82



Lot 83



Lot 84

**81**

## RFS MISS LILITH L118

Rydeen Farms

**Homo Black | Polled | 3/4 SM 1/4 AN | Bred Heifer**  
BD: 3/16/23 | Tattoo: L118 | ASA#: 4220363 | Adj. BW: 85 | Adj. WW: 684

ERI FLIGHT F402

**SIRE ER PHOENIX H417**

RFS MISS ETTA E92

HART CHECKMARK 4117

**DAM E135**

W3

Genomic Enhanced EPDs

	CE	BW	WW	YW	ADG	MCE	Milk	MWW	Stay	Doc	CW	YG	Marb	BF	REA	API	TI
EPD	16.6	0.8	89.1	135.7	0.29	7.6	23.7	67.2	14.8	18.5	43.8	-0.38	0.14	-0.052	1.22	130.1	82.9
%	15		15	20	35	40		25	50	3	20	10		30	2	60	45
Estimated	CE	BW	WW	YW	ADG	MCE	Milk	MWW	Stay	Doc	Marb	REA	API	TI			
Calf EPDs	16.2	-1.4	80.2	121.5	0.26	9.4	26.7	66.3	18.2	19.7	0.70	0.70	176.1	96.5			

- Ultrasound safe to AI, predicts early March calf
- AI bred to TRIF Gridmaster 207K on 5/25 then PE to TRIF Gridmaster 207K from 6/1 to 8/26

**82**

## RFS MISS LILA L189

Rydeen Farms

**Hetero Black | Homo Polled | PB SM | Bred Heifer**  
BD: 3/27/23 | Tattoo: L189 | ASA#: 4220434 | Adj. BW: 85 | Adj. WW: 594

LCDR IMPACT 134F

**SIRE RFS HERALD H104**

BCLR MISS BALDY E704

RFS CAPTAIN C21

**DAM F260**

RFS MISS A217

Genomic Enhanced EPDs

	CE	BW	WW	YW	ADG	MCE	Milk	MWW	Stay	Doc	CW	YG	Marb	BF	REA	API	TI
EPD	12.5	1.9	77.6	113.4	0.22	5.1	18.3	57.0	15.8	7.9	24.1	-0.51	0.02	-0.101	1.01	125.6	75.4
%	35							50				10		5	25	65	70
Estimated	CE	BW	WW	YW	ADG	MCE	Milk	MWW	Stay	Doc	Marb	REA	API	TI			
Calf EPDs	14.2	-0.9	74.5	110.4	0.22	8.2	24.0	61.2	18.7	14.4	0.64	0.59	169.8	91.4			

- AI bred to JC Mr Pontiac D114K on 5/25 then PE to TRIF Gridmaster 207K from 6/1 to 8/26

**83**

## RFS MISS LOUISE L166

Rydeen Farms

**Homo Black | Homo Polled | PB SM | Bred Heifer**  
BD: 3/22/23 | Tattoo: L166 | ASA#: 4220409 | Adj. BW: 87 | Adj. WW: 609

LCDR IMPACT 134F

**SIRE RFS HERALD H104**

BCLR MISS BALDY E704

KNH WORLDWIDE 408B

**DAM KSR DEBRA 731D**

KSR GRAND DESIRE 121X

Genomic Enhanced EPDs

	CE	BW	WW	YW	ADG	MCE	Milk	MWW	Stay	Doc	CW	YG	Marb	BF	REA	API	TI
EPD	11.6	2.0	81.8	119.7	0.24	5.2	21.3	62.1	16.2	13.0	28.6	-0.43	0.19	-0.098	0.83	135.4	81.8
%	50		35	45				50	45	35	50	35	45	15		45	45
Estimated	CE	BW	WW	YW	ADG	MCE	Milk	MWW	Stay	Doc	Marb	REA	API	TI			
Calf EPDs	13.7	-0.8	76.6	113.5	0.23	8.2	25.5	63.7	18.9	16.9	0.72	0.50	174.4	94.4			

- Ultrasound predicts early April calf
- AI bred to JC Mr Pontiac D114K on 5/25 then PE to TRIF Gridmaster 207K from 6/1 to 8/26

**84**

## RFS MISS LOLA L95

Rydeen Farms

**Hetero Black | Homo Polled | PB SM | Bred Heifer**  
BD: 3/11/23 | Tattoo: L95 | ASA#: 4220340 | Adj. BW: 96 | Adj. WW: 699

LCDR IMPACT 134F

**SIRE RFS HERALD H104**

BCLR MISS BALDY E704

WS GADGET 40G

**DAM RFS MISS JOY J116**

B36

Genomic Enhanced EPDs

	CE	BW	WW	YW	ADG	MCE	Milk	MWW	Stay	Doc	CW	YG	Marb	BF	REA	API	TI
EPD	11.1	5.8	103.7	157.3	0.34	6.1	25.2	76.9	12.9	14.8	46.7	-0.44	0.00	-0.118	0.92	120.5	86.4
%			1	2	10	50	35	4		20	10	30		2	40	75	30
Estimated	CE	BW	WW	YW	ADG	MCE	Milk	MWW	Stay	Doc	Marb	REA	API	TI			
Calf EPDs	12.2	2.2	96.4	146.4	0.32	7.0	24.1	72.2	16.6	15.2	0.32	1.00	149.6	93.2			

- Powerful, hetero black female out of RFS Herald
- Ultrasound safe to AI, predicts early March calf
- AI bred to JC Mr Pontiac D114K on 5/25 then PE to TRIF Gridmaster 207K from 6/1 to 8/26

**85****RFS MISS LUCIA L244**

Rydeen Farms **Homo Black | Homo Polled | 3/4 SM 1/4 AN | Bred Heifer**  
 BD: 5/1/23 | Tattoo: L244 | ASA#: 4220490 | Adj. BW: 90 | Adj. WW: 622

CCR POUNDER 2045F

SIRE **CCR COCHISE 4142H**

CCR MS CATALYST 4142B

CDI INNOVATOR 325D

DAM **LCDR MS GISELLE 8G**

TJ MS 38W

Genomic Enhanced EPDs

	CE	BW	WW	YW	ADG	MCE	Milk	MWW	Stay	Doc	CW	YG	Marb	BF	REA	API	TI
EPD	14.9	-0.9	76.4	123.3	0.29	8.5	28.3	66.5	19.2	6.5	41.4	-0.06	0.29	-0.024	0.43	142.5	80.2
%	25	35	50	40	35	25	20	30	10		25					35	55
Estimated	CE	BW	WW	YW	ADG	MCE	Milk	MWW	Stay	Doc	Marb	REA	API	TI			
Calif EPDs	15.4	-2.3	73.9	115.3	0.26	9.9	29.0	65.9	20.4	13.7	0.77	0.30	180.8	94.6			

• PE to TRIF Gridmaster 207K from 6/1/24 to 8/26/24

**Lot 85****86****RFS MISS LORELEI L217**

Rydeen Farms **Homo Black | Hetero Polled | 3/4 SM 1/4 AN | Bred Heifer**  
 BD: 4/12/23 | Tattoo: L217 | ASA#: 4220463 | Adj. BW: 81 | Adj. WW: 610

CCR POUNDER 2045F

SIRE **CCR COCHISE 4142H**

CCR MS CATALYST 4142B

KBHR COMPASS C324

DAM **E141**

U80

Genomic Enhanced EPDs

	CE	BW	WW	YW	ADG	MCE	Milk	MWW	Stay	Doc	CW	YG	Marb	BF	REA	API	TI
EPD	13.3	0.3	80.3	127.1	0.29	7.3	24.1	64.3	25.1	7.5	28.2	-0.29	0.39	-0.052	0.75	157.9	84.0
%	45		35	30	35	45	50	40	1		30	50	30	40	15	40	
Estimated	CE	BW	WW	YW	ADG	MCE	Milk	MWW	Stay	Doc	Marb	REA	API	TI			
Calif EPDs	15.2	-0.8	85.0	139.5	0.34	8.7	25.4	67.9	22.4	11.6	0.55	0.96	179.8	96.4			

• Ultrasound safe to AI, predicts early March calf  
 • AI bred to RFS Credentials L49 on 5/25 then PE to TRIF Gridmaster 207K from 6/1 to 8/26

**87****RFS MISS LENA L216**

Rydeen Farms **Homo Black | Polled | 1/2 SM 1/2 AN | Bred Heifer**  
 BD: 4/12/23 | Tattoo: L216 | ASA#: 4220462 | Adj. BW: 79 | Adj. WW: 621

CCR POUNDER 2045F

SIRE **CCR COCHISE 4142H**

CCR MS CATALYST 4142B

HART CHECKMARK 4117

DAM **E198**

B58

Genomic Enhanced EPDs

	CE	BW	WW	YW	ADG	MCE	Milk	MWW	Stay	Doc	CW	YG	Marb	BF	REA	API	TI
EPD	15.6	-0.1	78.2	127.6	0.31	9.6	28.2	65.9	20.6	8.7	34.6	0.02	0.50	0.003	0.31	156.8	85.4
%	20	50	45	30	25	15	20	35	3		45					15	35
Estimated	CE	BW	WW	YW	ADG	MCE	Milk	MWW	Stay	Doc	Marb	REA	API	TI			
Calif EPDs	15.7	-1.9	74.8	117.5	0.27	10.4	29.0	65.6	21.1	14.8	0.88	0.24	185.5	96.2			

• Ultrasound predicts mid-March calf  
 • AI bred to RFS Credentials L49 on 5/25 then PE to TRIF Gridmaster 207K from 6/1 to 8/26

**88****RFS MISS LOTTIE L221**

Rydeen Farms **Homo Black | Homo Polled | 5/8 SM 3/8 AN | Bred Heifer**  
 BD: 4/13/23 | Tattoo: L221 | ASA#: 4220467 | Adj. BW: 81 | Adj. WW: 607

CCR POUNDER 2045F

SIRE **CCR COCHISE 4142H**

CCR MS CATALYST 4142B

J BAR J NIGHTRIDE 225Z

DAM **F12**

D97

Genomic Enhanced EPDs

	CE	BW	WW	YW	ADG	MCE	Milk	MWW	Stay	Doc	CW	YG	Marb	BF	REA	API	TI
EPD	16.4	-2.3	73.2	114.9	0.26	8.9	25.8	62.4	23.4	9.7	29.6	0.01	0.61	0.008	0.29	170.4	87.2
%	15	15		20	35	50	1				20				5	30	
Estimated	CE	BW	WW	YW	ADG	MCE	Milk	MWW	Stay	Doc	Marb	REA	API	TI			
Calif EPDs	16.1	-3.0	72.3	111.1	0.24	10.1	27.8	63.9	22.5	15.3	0.93	0.23	192.1	97.0			

• Ultrasound safe to AI, predicts early March calf  
 • AI bred to TRIF Gridmaster 207K on 5/26 then PE to TRIF Gridmaster 207K from 6/1 to 8/26

**Lot 88****89****RFS MISS LIVIA L131**

Rydeen Farms **Hetero Black | Homo Polled | 5/8 SM 3/8 AN | Bred Heifer**  
 BD: 3/19/23 | Tattoo: L131 | ASA#: 4220376 | Adj. BW: 87 | Adj. WW: 639

CCR POUNDER 2045F

SIRE **CCR COCHISE 4142H**

CCR MS CATALYST 4142B

TNT AXIS X307

DAM **B32**

Y66

Genomic Enhanced EPDs

	CE	BW	WW	YW	ADG	MCE	Milk	MWW	Stay	Doc	CW	YG	Marb	BF	REA	API	TI
EPD	12.3	2.7	88.7	146.1	0.36	7.3	23.7	68.2	15.6	6.4	49.2	-0.18	0.33	-0.029	0.86	134.2	84.4
%		15	10	10	45		25	40			15				25	50	40
Estimated	CE	BW	WW	YW	ADG	MCE	Milk	MWW	Stay	Doc	Marb	REA	API	TI			
Calif EPDs	14.1	-0.5	80.0	126.7	0.29	9.3	26.7	66.8	18.6	13.6	0.79	0.52	175.3	96.1			

• Ultrasound predicts early April calf  
 • AI bred to TRIF Gridmaster 207K on 5/25 then PE to TRIF Gridmaster 207K from 6/1 to 8/26

**90****RFS MISS LILLIAN L254**

Rydeen Farms **Homo Black | Homo Polled | 3/4 SM 1/4 AN | Bred Heifer**  
 BD: 5/12/23 | Tattoo: L254 | ASA#: 4220498 | Adj. BW: 89 | Adj. WW: 642

CCR POUNDER 2045F

SIRE **CCR COCHISE 4142H**

CCR MS CATALYST 4142B

LCDR IMPACT 134F

DAM **RFS MISS HELENA H34**

RFS MISS Z73

Genomic Enhanced EPDs

	CE	BW	WW	YW	ADG	MCE	Milk	MWW	Stay	Doc	CW	YG	Marb	BF	REA	API	TI
EPD	13.4	2.1	98.4	158.3	0.37	8.2	25.4	74.6	20.7	10.2	53.2	-0.22	0.18	-0.062	0.77	141.9	87.4
%	40		2	2	4	30	40	10	3		10	50			20	35	40
Estimated	CE	BW	WW	YW	ADG	MCE	Milk	MWW	Stay	Doc	Marb	REA	API	TI			
Calif EPDs	14.6	-0.8	84.9	132.8	0.30	9.7	27.6	70.0	21.1	15.5	0.72	0.47	182.1	98.9			

• Ultrasound predicts late March calf  
 • AI bred to TRIF Gridmaster 207K on 5/25 then PE to TRIF Gridmaster 207K from 6/1 to 8/26

BRED HEIFERS





Lot 91

## 91 | RFS MISS LINNEA L171

Rydeen Farms **Homo Black | Homo Polled | PB SM | Bred Heifer**  
BD: 3/23/23 | Tattoo: L171 | ASA#: 4220416 | Adj. BW: 86 | Adj. WW: 667

WS PROCLAMATION E202  
SIRE **KBHR GLOBAL J138**  
BAR CK MS X38 106Z  
SVF ALLEGIANCE Y80Z

DAM **E62**

Genomic Enhanced EPDs B93

	CE	BW	WW	YW	ADG	MCE	Milk	MWW	Stay	Doc	CW	YG	Marb	BF	REA	API	TI
EPD	15.9	0.3	83.7	131.5	0.30	9.2	23.3	65.1	16.5	13.7	35.2	-0.26	0.45	-0.060	0.67	160.0	91.9
%	10	35	30	25	20	10	50	35	40	25	25		15			15	15
Estimated	CE	BW	WW	YW	ADG	MCE	Milk	MWW	Stay	Doc	Marb	REA	API	TI			
Calf EPDs	15.9	-1.7	77.5	119.4	0.26	10.2	26.5	65.2	19.0	17.3	0.85	0.42	186.9	99.5			

- Ultrasound predicts early April calf
- PE to TRIF Gridmaster 207K from 6/1/24 to 8/26/24

## 92 | RFS MISS LILAC L255

Rydeen Farms **Homo Black | Homo Polled | 5/8 SM 3/8 AN | Bred Heifer**  
BD: 5/12/23 | Tattoo: L255 | ASA#: 4220499 | Adj. BW: 90 | Adj. WW: 664

CCR POUNDER 2045F  
SIRE **CCR COCHISE 4142H**  
CCR MS CATALYST 4142B  
KBHR NEXT LEVEL E206

DAM **RFS MISS H191**

Genomic Enhanced EPDs F81

	CE	BW	WW	YW	ADG	MCE	Milk	MWW	Stay	Doc	CW	YG	Marb	BF	REA	API	TI
EPD	11.4	1.5	91.3	150.2	0.37	6.7	27.0	72.6	16.0	9.9	48.7	-0.02	0.55	-0.008	0.51	148.1	92.3
%	10	5	4	25	10	35	15	25								30	15
Estimated	CE	BW	WW	YW	ADG	MCE	Milk	MWW	Stay	Doc	Marb	REA	API	TI			
Calf EPDs	13.6	-1.1	81.3	128.8	0.30	9.0	28.4	69.0	18.8	15.4	0.90	0.34	182.2	100.1			

- Ultrasound predicts mid-April calf
- AI bred to TRIF Gridmaster 207K on 5/26 then PE to TRIF Gridmaster 207K from 6/1 to 8/26

## 93 | RFS MISS LENORE L122

Rydeen Farms **Hetero Black | Homo Polled | PB SM | Bred Heifer**  
BD: 3/17/23 | Tattoo: L122 | ASA#: 4220367 | Adj. BW: 95 | Adj. WW: 602

WS PROCLAMATION E202  
SIRE **KBHR GLOBAL J138**  
BAR CK MS X38 106Z  
LCCR IMPACT 134F

DAM **RFS MISS J111**

Genomic Enhanced EPDs F41

	CE	BW	WW	YW	ADG	MCE	Milk	MWW	Stay	Doc	CW	YG	Marb	BF	REA	API	TI
EPD	10.5	0.5	87.0	143.8	0.36	7.5	21.1	64.6	23.0	17.3	32.1	-0.27	0.48	-0.071	0.60	170.7	94.2
%	35	20	10	3	25		40	1	4	35			10	50		5	10
Estimated	CE	BW	WW	YW	ADG	MCE	Milk	MWW	Stay	Doc	Marb	REA	API	TI			
Calf EPDs	13.2	-1.6	79.2	125.6	0.29	9.4	25.4	65.0	22.3	19.1	0.87	0.39	192.4	100.8			

- Ultrasound safe to AI, predicts early March calf
- AI bred to TRIF Gridmaster 207K on 5/25 then PE to TRIF Gridmaster 207K from 6/1 to 8/26

## 94 | RFS MISS LANA L126

Rydeen Farms **Homo Black | Homo Polled | PB SM | Bred Heifer**  
BD: 3/18/23 | Tattoo: L126 | ASA#: 4220371 | Adj. BW: 88 | Adj. WW: 576

WS PROCLAMATION E202  
SIRE **KBHR GLOBAL J138**  
BAR CK MS X38 106Z  
CLRS CONSTITUTION 311 C

DAM **RFS MISS H206**

Genomic Enhanced EPDs RFS MISS ACHIEVE A168

	CE	BW	WW	YW	ADG	MCE	Milk	MWW	Stay	Doc	CW	YG	Marb	BF	REA	API	TI
EPD	12.3	-0.7	73.4	121.1	0.30	7.1	22.2	58.8	17.6	18.6	21.4	-0.33	0.62	-0.065	0.67	166.2	91.2
%	40	20		40	20	30			30	2			4			10	15
Estimated	CE	BW	WW	YW	ADG	MCE	Milk	MWW	Stay	Doc	Marb	REA	API	TI			
Calf EPDs	14.1	-2.2	72.4	114.2	0.26	9.2	26.0	62.1	19.6	19.7	0.94	0.42	190.3	99.4			

- Ultrasound safe to AI, predicts early March calf
- AI bred to TRIF Gridmaster 207K on 5/25 then PE to TRIF Gridmaster 207K from 6/1 to 8/26



Lot 94

## 95 | RFS MISS LIA L204

Rydeen Farms **Homo Black | Homo Polled | PB SM | Bred Heifer**  
BD: 4/3/23 | Tattoo: L204 | ASA#: 4220449 | Adj. BW: 80 | Adj. WW: 627

WS PROCLAMATION E202  
SIRE **KBHR GLOBAL J138**  
BAR CK MS X38 106Z  
CCR COWBOY CUT 5048Z

DAM **RFS MISS J65**

Genomic Enhanced EPDs F2

	CE	BW	WW	YW	ADG	MCE	Milk	MWW	Stay	Doc	CW	YG	Marb	BF	REA	API	TI
EPD	15.8	-0.7	79.3	122.1	0.27	10.2	23.0	62.6	17.7	18.4	35.9	-0.29	0.56	-0.053	0.82	168.6	93.3
%	10	20	45	40	35	4	50	25	2	25		10			10	15	
Estimated	CE	BW	WW	YW	ADG	MCE	Milk	MWW	Stay	Doc	Marb	REA	API	TI			
Calf EPDs	15.8	-2.2	75.3	114.7	0.25	10.7	26.4	64.0	19.6	19.6	0.91	0.50	191.2	100.3			

- Ultrasound safe to AI, predicts early March calf
- AI bred to TRIF Gridmaster 207K on 5/25 then PE to TRIF Gridmaster 207K from 6/1 to 8/26

## 96 | RFS MISS LAUREN L134

Rydeen Farms **Homo Black | Homo Polled | 3/4 SM 1/4 AN | Bred Heifer**  
BD: 3/19/23 | Tattoo: L134 | ASA#: 4220379 | Adj. BW: 89 | Adj. WW: 683

WS PROCLAMATION E202  
SIRE **KBHR GLOBAL J138**  
BAR CK MS X38 106Z  
HART FINAL ANSWER 0048

DAM **B213**

Genomic Enhanced EPDs RFS MISS Z187

	CE	BW	WW	YW	ADG	MCE	Milk	MWW	Stay	Doc	CW	YG	Marb	BF	REA	API	TI
EPD	13.6	0.6	80.3	128.0	0.30	9.5	27.6	67.7	15.4	15.3	50.2	-0.25	0.59	-0.065	0.80	149.5	89.0
%	40		35	30	30	15	25	45	20	10	45	20	20	30	25	25	
Estimated	CE	BW	WW	YW	ADG	MCE	Milk	MWW	Stay	Doc	Marb	REA	API	TI			
Calf EPDs	14.7	-1.5	75.8	117.7	0.26	10.4	28.7	66.5	18.5	18.1	0.92	0.49	185.5	99.4			

- Ultrasound predicts mid-April calf
- AI bred to JC Mr Pontiac D114K on 5/25 then PE to TRIF Gridmaster 207K from 6/1 to 8/26

97

RFS MISS LAUREL L89

Rydeen Farms Homo Black | Homo Polled | PB SM | Bred Heifer
BD: 3/10/23 | Tattoo: L89 | ASA#: 4220334 | Adj. BW: 85 | Adj. WW: 649

WS PROCLAMATION E202
SIRE KBHR GLOBAL J138
BAR CK MS X38 106Z
TNT TANKER U263

DAM B105

Genomic Enhanced EPDs RF SAPPHIRE S96

Table with 17 columns: CE, BW, WW, YW, ADG, MCE, Milk, MWW, Stay, Doc, CW, YG, Marb, BF, REA, API, TI. Rows include EPD, %, Estimated, and Calf EPDs.

- Attractive Global daughter out of a great Tanker dam
• Ultrasound predicts mid-March calf



Lot 97

98

RFS MISS LOU L105

Rydeen Farms Homo Black | Homo Polled | PB SM | Bred Heifer
BD: 3/14/23 | Tattoo: L105 | ASA#: 4220350 | Adj. BW: 86 | Adj. WW: 622

WS PROCLAMATION E202
SIRE KBHR GLOBAL J138
BAR CK MS X38 106Z
LCDR IMPACT 134F

DAM RFS MISS J72

Genomic Enhanced EPDs F30

Table with 17 columns: CE, BW, WW, YW, ADG, MCE, Milk, MWW, Stay, Doc, CW, YG, Marb, BF, REA, API, TI. Rows include EPD, %, Estimated, and Calf EPDs.

- Ultrasound predicts mid-April calf
• PE to TRIF Gridmaster 207K from 6/1/24 to 8/26/24



Lot 98

99

RFS MISS LUX L106

Rydeen Farms Homo Black | Homo Polled | 3/4 SM 1/4 AN | Bred Heifer
BD: 3/15/23 | Tattoo: L106 | ASA#: 4220351 | Adj. BW: 84 | Adj. WW: 726

ERI FLIGHT F402
SIRE ER PHOENIX H417
RFS MISS ETTA E92
CLRS CONSTITUTION 311 C

DAM F32

Genomic Enhanced EPDs D12

Table with 17 columns: CE, BW, WW, YW, ADG, MCE, Milk, MWW, Stay, Doc, CW, YG, Marb, BF, REA, API, TI. Rows include EPD, %, Estimated, and Calf EPDs.

- Ultrasound predicts late March calf
• PE to TRIF Gridmaster 207K from 6/1/24 to 8/26/24



Lot 99

100

RFS MISS LISA L116

Rydeen Farms Homo Black | Homo Polled | PB SM | Bred Heifer
BD: 3/16/23 | Tattoo: L116 | ASA#: 4220361 | Adj. BW: 85 | Adj. WW: 664

ERI FLIGHT F402
SIRE ER PHOENIX H417
RFS MISS ETTA E92
DIKEMANS DOUBLE DOWN 26W

DAM RFS MISS ALLEGIANCE A17

Genomic Enhanced EPDs U33

Table with 17 columns: CE, BW, WW, YW, ADG, MCE, Milk, MWW, Stay, Doc, CW, YG, Marb, BF, REA, API, TI. Rows include EPD, %, Estimated, and Calf EPDs.

- Ultrasound safe to AI, predicts early March calf
• AI bred to JC Mr Pontiac D114K on 5/25 then PE to TRIF Gridmaster 207K from 6/1 to 8/26

101

RFS MISS LORRAINE L109

Rydeen Farms Hetero Black | Homo Polled | PB SM | Bred Heifer
BD: 3/15/23 | Tattoo: L109 | ASA#: 4220354 | Adj. BW: 85 | Adj. WW: 681

ERI FLIGHT F402
SIRE ER PHOENIX H417
RFS MISS ETTA E92
CLRS CONSTITUTION 311 C

DAM F41

Genomic Enhanced EPDs Y2

Table with 17 columns: CE, BW, WW, YW, ADG, MCE, Milk, MWW, Stay, Doc, CW, YG, Marb, BF, REA, API, TI. Rows include EPD, %, Estimated, and Calf EPDs.

- Ultrasound safe to AI, predicts early March calf
• AI bred to JC Mr Pontiac D114K on 5/25 then PE to TRIF Gridmaster 207K from 6/1 to 8/26

BRED HEIFERS





Lot 102

## 103 RFS MISS LARISSA L128

Rydeen Farms **Homo Black | Homo Polled | 3/4 SM 1/4 AN | Bred Heifer**  
BD: 3/19/23 | Tattoo: L128 | ASA#: 4220373 | Adj. BW: 85 | Adj. WW: 692

ERI FLIGHT F402  
SIRE **ER PHOENIX H417**  
RFS MISS ETTA E92  
G A R MOMENTUM  
DAM **RFS MISS MOMENTUM G113**  
KNH SUPERIOR 146Z

Genomic Enhanced EPDs

	CE	BW	WW	YW	ADG	MCE	Milk	MWW	Stay	Doc	CW	YG	Marb	BF	REA	API	TI	
EPD	17.5	-0.9	76.1	109.5	0.21	7.4	24.6	62.4	17.4	13.6	42.8	-0.40	0.29	-0.041	1.36	141.4	80.6	
%	10	35	50			45	45	50	25	35	25	10			45	1	40	55
Estimated	CE	BW	WW	YW	ADG	MCE	Milk	MWW	Stay	Doc	Marb	REA	API	TI				
Calf EPDs	15.4	-1.2	82.6	122.5	0.25	7.6	23.8	65.0	18.9	14.6	0.47	1.22	163.3	91.5				

- Ultrasound safe to AI, predicts early March calf
- AI bred to JC Mr Pontiac D114K on 5/25 then PE to TRIF Gridmaster 207K from 6/1 to 8/26



Lot 105

**DVAuction**  
Broadcasting Real-Time Auctions



View the sale catalog, videos on all lots and register to bid online at [www.dvauction.com](http://www.dvauction.com)

## 102 RFS MISS LINDA L222

Rydeen Farms **Homo Black | Homo Polled | PB SM | Bred Heifer**  
BD: 4/13/23 | Tattoo: L222 | ASA#: 4220468 | Adj. BW: 88 | Adj. WW: 702

ERI FLIGHT F402  
SIRE **ER PHOENIX H417**  
RFS MISS ETTA E92  
HOOK'S BEACON 56B  
DAM **RFS MISS BEACON G89**  
RFS MISS Z25

Genomic Enhanced EPDs

	CE	BW	WW	YW	ADG	MCE	Milk	MWW	Stay	Doc	CW	YG	Marb	BF	REA	API	TI
EPD	16.5	0.4	84.9	130.9	0.29	9.1	23.8	66.2	17.6	13.3	42.3	-0.42	0.26	-0.069	1.19	153.3	88.4
%	5	35	25	25	25	10	45	35	30	30	15	40	35		5	20	25
Estimated	CE	BW	WW	YW	ADG	MCE	Milk	MWW	Stay	Doc	Marb	REA	API	TI			
Calf EPDs	16.2	-1.6	78.1	119.1	0.26	10.2	26.8	65.8	19.6	17.1	0.76	0.68	183.9	97.9			

- Ultrasound predicts a late March calf
- AI bred to TRIF Gridmaster 207K on 5/26 then PE to TRIF Gridmaster 207K from 6/1 to 8/26

## 104 RFS MISS LETTIE L160

Rydeen Farms **Homo Black | Homo Polled | PB SM | Bred Heifer**  
BD: 3/22/23 | Tattoo: L160 | ASA#: 4220405 | Adj. BW: 86 | Adj. WW: 699

ERI FLIGHT F402  
SIRE **ER PHOENIX H417**  
RFS MISS ETTA E92  
KBHR HIGH ROAD E283  
DAM **RFS MISS HIGH ROAD G77**  
B93

Genomic Enhanced EPDs

	CE	BW	WW	YW	ADG	MCE	Milk	MWW	Stay	Doc	CW	YG	Marb	BF	REA	API	TI
EPD	15.7	-0.1	76.9	112.1	0.22	7.5	25.0	63.3	18.1	13.3	29.2	-0.42	0.17	-0.077	0.95	145.1	81.7
%	10	25				25	35	45	25	30	45	40	50	50	35	30	45
Estimated	CE	BW	WW	YW	ADG	MCE	Milk	MWW	Stay	Doc	Marb	REA	API	TI			
Calf EPDs	15.8	-1.9	74.1	109.7	0.22	9.4	27.4	64.3	19.8	17.1	0.71	0.56	179.2	94.4			

- Ultrasound safe to AI, predicts early March calf
- AI bred to TRIF Gridmaster 207K on 5/25 then PE to TRIF Gridmaster 207K from 6/1 to 8/26

## 105 RFS MISS LYNN L130

Rydeen Farms **Homo Black | Homo Polled | PB SM | Bred Heifer**  
BD: 3/19/23 | Tattoo: L130 | ASA#: 4220375 | Adj. BW: 87 | Adj. WW: 659

ERI FLIGHT F402  
SIRE **ER PHOENIX H417**  
RFS MISS ETTA E92  
WS PROCLAMATION E202  
DAM **RFS MISS PROCLAMATION G109**  
C78

Genomic Enhanced EPDs

	CE	BW	WW	YW	ADG	MCE	Milk	MWW	Stay	Doc	CW	YG	Marb	BF	REA	API	TI
EPD	16.0	-0.2	78.9	122.5	0.27	5.6	25.2	64.6	17.9	18.0	24.1	-0.34	0.18	-0.058	0.79	147.6	83.4
%	10	25	45	40	35		35	40	25	3			50			25	40
Estimated	CE	BW	WW	YW	ADG	MCE	Milk	MWW	Stay	Doc	Marb	REA	API	TI			
Calf EPDs	15.9	-1.9	75.1	114.9	0.25	8.4	27.5	65.0	19.7	19.4	0.72	0.48	180.6	95.3			

- Ultrasound predicts late March calf
- AI bred to JC Mr Pontiac D114K on 5/25 then PE to TRIF Gridmaster 207K from 6/1 to 8/26

## 106 RFS MISS LESLIE L220

Rydeen Farms **Homo Black | Homo Polled | 3/4 SM 1/4 AN | Bred Heifer**  
BD: 4/12/23 | Tattoo: L220 | ASA#: 4220466 | Adj. BW: 84 | Adj. WW: 652

ERI FLIGHT F402  
SIRE **ER PHOENIX H417**  
RFS MISS ETTA E92  
CONNEALY IRISH 0204  
DAM **C6**  
RFS MISS ALLEGIANCE A17

Genomic Enhanced EPDs

	CE	BW	WW	YW	ADG	MCE	Milk	MWW	Stay	Doc	CW	YG	Marb	BF	REA	API	TI
EPD	18.5	1.2	82.5	125.8	0.27	10.9	23.6	64.2	22.2	10.9	33.2	-0.27	0.27	-0.041	0.84	150.8	81.5
%	5	30	35	50	5		40	1		50	35		45	25	25	50	
Estimated	CE	BW	WW	YW	ADG	MCE	Milk	MWW	Stay	Doc	Marb	REA	API	TI			
Calf EPDs	17.2	-1.2	76.9	116.6	0.25	11.1	26.7	64.8	21.9	15.9	0.76	0.51	186.2	95.7			

- AI bred to JC Mr Pontiac D114K on 5/25 then PE to TRIF Gridmaster 207K from 6/1 to 8/26

# 107

# RFS MISS LORI L194

Rydeen Farms | **Homo Black | Homo Polled | 3/4 SM 5/32 AN 3/32 CS | Bred Heifer**

BD: 3/30/23 | Tattoo: L194 | ASA#: 4220439 | Adj. BW: 86 | Adj. WW: 617

SIRE **ER PHOENIX H417**

RFS MISS ETTA E92

GW ROBUST 605Z

DAM **RFS MISS EMILY E88**

RFS MISS Z47

Genomic Enhanced EPDs

	CE	BW	WW	YW	ADG	MCE	Milk	MWW	Stay	Doc	CW	YG	Marb	BF	REA	API	TI
EPD	17.3	-1.1	81.4	126.8	0.28	7.0	20.9	61.5	14.6	17.1	33.8	-0.53	-0.11	-0.101	1.19	118.8	75.1
%	10	30	30	35	40	50				10	50	1		1	2	75	75
Estimated	CE	BW	WW	YW	ADG	MCE	Milk	MWW	Stay	Doc	Marb	REA	API	TI			
Calf EPDs	16.6	-2.4	76.4	117.1	0.25	9.1	25.3	63.4	18.1	19.0	0.57	0.68	172.2	93.3			

- Ultrasound predicts late March calf
- AI bred to JC Mr Pontiac D114K on 5/25 then PE to TRIF Gridmaster 207K from 6/1 to 8/26



Lot 107

# 108

# RFS MISS LARKIN L85

Rydeen Farms | **Homo Black | Homo Polled | 3/4 SM 1/4 AN | Bred Heifer**

BD: 3/8/23 | Tattoo: L85 | ASA#: 4220331 | Adj. BW: 85 | Adj. WW: 591

HOOK'S BEACON 56B

SIRE **KBHR HONOR H060**

WS MISS SUGAR C4

EGL FIRESTEEL 103F

DAM **RFS MISS J108**

RFS MISS GRETA G75

Genomic Enhanced EPDs

	CE	BW	WW	YW	ADG	MCE	Milk	MWW	Stay	Doc	CW	YG	Marb	BF	REA	API	TI
EPD	13.7	-2.4	73.4	117.8	0.28	6.5	25.0	61.6	21.3	12.1	32.4	-0.36	0.69	-0.061	0.95	169.9	91.1
%	40	15	50	40	45				2		15	15	20	15	10	20	20
Estimated	CE	BW	WW	YW	ADG	MCE	Milk	MWW	Stay	Doc	Marb	REA	API	TI			
Calf EPDs	14.8	-3.0	72.4	112.6	0.25	8.9	27.4	63.5	21.4	16.5	0.97	0.56	197.7	101.3			

- 3/4 blood with excellent economic indexes
- Ultrasound predicts mid-April calf

# 109

# RFS MISS LUCINDA L136

Rydeen Farms | **Hetero Black | Homo Polled | PB SM | Bred Heifer**

BD: 3/19/23 | Tattoo: L136 | ASA#: 4220381 | Adj. BW: 84 | Adj. WW: 546

LBR5 GENESIS G69

SIRE **KBHR GUNSMOKE J131**

KBHR E197

CLRS DIVIDEND 405D

DAM **F44**

C67

Genomic Enhanced EPDs

	CE	BW	WW	YW	ADG	MCE	Milk	MWW	Stay	Doc	CW	YG	Marb	BF	REA	API	TI
EPD	10.1	0.2	75.3	109.7	0.22	5.0	21.6	59.1	17.6	12.4	20.5	-0.13	0.73	-0.008	0.50	164.7	91.7
%	30		30	40					30	40			2		10	15	
Estimated	CE	BW	WW	YW	ADG	MCE	Milk	MWW	Stay	Doc	Marb	REA	API	TI			
Calf EPDs	13.0	-1.7	73.3	108.5	0.22	8.1	25.7	62.2	19.6	16.6	0.99	0.34	189.1	99.4			

- Ultrasound predicts late March calf
- AI bred to TRIF Gridmaster 207K on 5/25 then PE to TRIF Gridmaster 207K from 6/1 to 8/26

# 110

# RFS MISS LEIGH L73

Rydeen Farms | **Homo Black | Homo Polled | PB SM | Bred Heifer**

BD: 3/6/23 | Tattoo: L73 | ASA#: 4220320 | Adj. BW: 85 | Adj. WW: 631

TRPH RRR NIGHTFORCE B30

SIRE **KBHR GENETIC FORCE G095**

KBHR E197

LCDR IMPACT 134F

DAM **RFS MISS J131**

RFS MISS Z84

Genomic Enhanced EPDs

	CE	BW	WW	YW	ADG	MCE	Milk	MWW	Stay	Doc	CW	YG	Marb	BF	REA	API	TI
EPD	10.9	1.8	93.5	139.6	0.29	6.2	24.3	70.9	16.7	14.5	24.4	-0.30	0.46	-0.040	0.82	154.9	95.5
%	10	15	25	45	40	15	40	20	20			15			20	10	
Estimated	CE	BW	WW	YW	ADG	MCE	Milk	MWW	Stay	Doc	Marb	REA	API	TI			
Calf EPDs	13.4	-0.9	82.4	123.5	0.26	8.7	27.0	68.1	19.1	17.7	0.86	0.50	184.4	101.4			

- Powerful female out of an Impact daughter
- Ultrasound predicts early April calf



Lot 110

# 111

# RFS MISS LIBBY L84

Rydeen Farms | **Red | Homo Polled | PB SM | Bred Heifer**

BD: 3/8/23 | Tattoo: L84 | ASA#: 4220330 | Adj. BW: 91 | Adj. WW: 676

TRPH RRR NIGHTFORCE B30

SIRE **KBHR GENETIC FORCE G095**

KBHR E197

WS GADGET 40G

DAM **RFS MISS J103**

RFS MISS ACOLYTE A173

Genomic Enhanced EPDs

	CE	BW	WW	YW	ADG	MCE	Milk	MWW	Stay	Doc	CW	YG	Marb	BF	REA	API	TI
EPD	13.5	0.6	86.7	135.2	0.30	7.2	25.8	69.0	15.1	10.6	41.0	-0.35	0.40	-0.037	1.21	152.5	92.5
%	25	40	20	20	30	30	20			15	20			4	20	15	
Estimated	CE	BW	WW	YW	ADG	MCE	Milk	MWW	Stay	Doc	Marb	REA	API	TI			
Calf EPDs	14.4	-0.8	82.3	128.3	0.29	7.7	22.2	63.2	17.5	7.8	0.73	1.10	176.7	98.6			

- Outcross red genetics
- Ultrasound predicts early April calf



Lot 111

BRED HEIFERS





**Lot 112**

## 112 | RFS MISS LORETTA L218

Rydeen Farms | **Red | Homo Polled | PB SM | Bred Heifer**  
 BD: 4/12/23 | Tattoo: L218 | ASA#: 4220464 | Adj. BW: 87 | Adj. WW: 675

KBHR SNIPER E036  
**SIRE WS GADGET 40G**  
 WS EMOTION E127  
 CDI BIG TIME 297D

**DAM F140**

LRs MS AXIS 281Z

Genomic Enhanced EPDs																	
CE	BW	WW	YW	ADG	MCE	Milk	MWW	Stay	Doc	CW	YG	Marb	BF	REA	API	TI	
EPD	14.3	-0.6	89.9	136.9	0.29	8.3	20.0	64.9	19.2	11.5	52.9	-0.34	0.21	-0.079	0.99	154.2	90.3
%	20	20	15	15	25	15	40	15	3	3	45	50	25	20	20		
Estimated	CE	BW	WW	YW	ADG	MCE	Milk	MWW	Stay	Doc	Marb	REA	API	TI			
Calf EPDs	14.8	-1.4	83.9	129.2	0.28	8.2	19.3	61.2	19.5	8.2	0.63	0.99	177.6	97.7			

- Ultrasound safe to AI, predicts early March calf
- AI bred to CLRS/KRN Octane 979L on 5/25 then PE to CLRS/KRN Octane 979L from 6/1 to 8/27



**Lot 113**

## 113 | RFS MISS LACEY L103

Rydeen Farms | **Red | Hetero Polled | PB SM | Bred Heifer**  
 BD: 3/14/23 | Tattoo: L103 | ASA#: 4220348 | Adj. BW: 87 | Adj. WW: 606

KBHR SNIPER E036  
**SIRE WS GADGET 40G**  
 WS EMOTION E127  
 RFS T46

**DAM RFS MISS Z198**

U206

Genomic Enhanced EPDs																	
CE	BW	WW	YW	ADG	MCE	Milk	MWW	Stay	Doc	CW	YG	Marb	BF	REA	API	TI	
EPD	10.2	2.8	90.7	143.4	0.33	6.7	18.9	64.2	12.9	15.7	41.2	-0.28	0.04	-0.088	0.60	122.1	82.0
%			15	10	10	40	40	40	10	15			30		70	45	
Estimated	CE	BW	WW	YW	ADG	MCE	Milk	MWW	Stay	Doc	Marb	REA	API	TI			
Calf EPDs	12.7	0.4	84.3	132.4	0.30	7.4	18.7	60.8	16.4	10.3	0.55	0.80	161.5	93.4			

- Ultrasound safe to AI, predicts early March calf
- AI bred to CLRS/KRN Octane 979L on 5/25 then PE to CLRS/KRN Octane 979L from 6/1 to 8/27



**Lot 114**

## 114 | RFS MISS LONDON L93

Rydeen Farms | **Red | Homo Polled | PB SM | Bred Heifer**  
 BD: 3/11/23 | Tattoo: L93 | ASA#: 4220338 | Adj. BW: 81 | Adj. WW: 717

KBHR SNIPER E036  
**SIRE WS GADGET 40G**  
 WS EMOTION E127  
 WS ALL ABOARD B80

**DAM RFS MISS ALL ABOARD G22**

E178

Genomic Enhanced EPDs																	
CE	BW	WW	YW	ADG	MCE	Milk	MWW	Stay	Doc	CW	YG	Marb	BF	REA	API	TI	
EPD	16.0	-0.7	102.3	161.4	0.37	10.3	21.6	72.6	9.8	12.1	49.3	-0.26	0.17	-0.073	0.75	141.3	97.4
%	10	20	2	2	2	3	10	45	4	50	50			35	10		
Estimated	CE	BW	WW	YW	ADG	MCE	Milk	MWW	Stay	Doc	Marb	REA	API	TI			
Calf EPDs	15.6	-1.4	90.1	141.4	0.32	9.2	20.1	65.0	14.8	8.5	0.61	0.87	171.0	101.1			

- Performance pedigree
- Ultrasound safe to AI, predicts early March calf
- AI bred on 5/25 to Octane, PE to Octane 6/1-8/27/24



**Lot 115**

## 115 | RFS MISS LORNA L227

Rydeen Farms | **Red | Homo Polled | PB SM | Bred Heifer**  
 BD: 4/16/23 | Tattoo: L227 | ASA#: 4220473 | Adj. BW: 90 | Adj. WW: 781

KBHR SNIPER E036  
**SIRE WS GADGET 40G**  
 WS EMOTION E127  
 WS ALL ABOARD B80

**DAM F173**

D98

Genomic Enhanced EPDs																	
CE	BW	WW	YW	ADG	MCE	Milk	MWW	Stay	Doc	CW	YG	Marb	BF	REA	API	TI	
EPD	14.8	-0.6	95.2	145.1	0.31	8.8	24.9	72.4	10.1	13.2	48.0	-0.37	0.13	-0.079	1.04	134.9	92.4
%	15	20	10	10	15	15	35	15	35	5			50	20	45	15	
Estimated	CE	BW	WW	YW	ADG	MCE	Milk	MWW	Stay	Doc	Marb	REA	API	TI			
Calf EPDs	15.0	-1.4	86.6	133.3	0.29	8.5	21.7	64.9	15.0	9.1	0.59	1.02	167.8	98.6			

- Ultrasound safe to AI, predicts early March calf
- AI bred to CLRS/KRN Octane 979L on 5/25 then PE to CLRS/KRN Octane 979L from 6/1 to 8/27



# 116 | RFS MISS LOURDES L231

Rydeen Farms

**Red | Homo Polled | PB SM | Bred Heifer**  
 BD: 4/21/23 | Tattoo: L231 | ASA#: 4220477 | Adj. BW: 90 | Adj. WW: 643

KBHR SNIPER E036  
**SIRE WS GADGET 40G**  
 WS EMOTION E127  
 35R

**DAM X124**

Genomic Enhanced EPDs RFS MICHELLE

EPD	CE	BW	WW	YW	ADG	MCE	Milk	MWW	Stay	Doc	CW	YG	Marb	BF	REA	API	TI
10.8	2.0	89.0	134.9	0.29	5.2	22.6	67.0	13.3	13.9	51.2	-0.47	0.20	-0.120	1.07	133.1	86.8	
%		15	20	25			30		25	3	20	45	2	15	50	30	
Estimated	CE	BW	WW	YW	ADG	MCE	Milk	MWW	Stay	Doc	Marb	REA	API	TI			
Calf EPDs	13.0	-0.1	83.5	128.2	0.28	6.7	20.6	62.2	16.6	9.4	0.63	1.03	167.2	96.0			

- Ultrasound predicts mid-April calf
- AI bred to CLRS/KRN Octane 979L on 5/25 then PE to CLRS/KRN Octane 979L from 6/1 to 8/27



Lot 116

# 117 | RFS MISS LYNETTE L151

Rydeen Farms

**Red | Homo Polled | PB SM | Bred Heifer**  
 BD: 3/21/23 | Tattoo: L151 | ASA#: 4220396 | Adj. BW: 83 | Adj. WW: 633

THSF LOVER BOY B33  
**SIRE ROCKIN H CAPTIVATE J75**  
 ROCKIN H MS.CAROLINA  
 HOOK'S XPECTATION 36X

**DAM E49**

Genomic Enhanced EPDs C176

EPD	CE	BW	WW	YW	ADG	MCE	Milk	MWW	Stay	Doc	CW	YG	Marb	BF	REA	API	TI
13.4	-0.1	80.5	120.5	0.25	7.8	27.3	67.5	19.1	18.3	20.9	-0.33	0.26	-0.041	0.86	150.3	85.8	
%	25	25	40	40	50	20	20	25	15	2		35			25	30	
Estimated	CE	BW	WW	YW	ADG	MCE	Milk	MWW	Stay	Doc	Marb	REA	API	TI			
Calf EPDs	14.3	-1.1	79.2	121.0	0.26	8.0	22.9	62.5	19.5	11.6	0.66	0.93	175.9	95.4			

- Ultrasound predicts early April calf
- PE to CLRS/KRN Octane 979L from 6/1 to 8/27



Lot 117

# 118 | RFS MISS LORENA L147

Rydeen Farms

**Red | Homo Polled | PB SM | Bred Heifer**  
 BD: 3/20/23 | Tattoo: L147 | ASA#: 4220392 | Adj. BW: 91 | Adj. WW: 614

THSF LOVER BOY B33  
**SIRE ROCKIN H CAPTIVATE J75**  
 ROCKIN H MS.CAROLINA  
 RFS FORCE F35

**DAM RFS MISS H102**

Genomic Enhanced EPDs D129

EPD	CE	BW	WW	YW	ADG	MCE	Milk	MWW	Stay	Doc	CW	YG	Marb	BF	REA	API	TI
13.6	-2.1	73.6	114.3	0.25	8.0	23.3	60.0	14.7	16.7	28.8	-0.36	0.32	-0.060	0.90	146.9	85.5	
%	25	10		50	20	50			10	45		25		45	30	35	
Estimated	CE	BW	WW	YW	ADG	MCE	Milk	MWW	Stay	Doc	Marb	REA	API	TI			
Calf EPDs	14.4	-2.1	75.8	117.9	0.26	8.1	20.9	58.7	17.3	10.8	0.69	0.95	174.2	95.3			

- Ultrasound predicts early April calf
- AI bred to CLRS/KRN Octane 979L on 5/25 then PE to CLRS/KRN Octane 979L from 6/1 to 8/27



Lot 118



BRED HEIFERS



# REFERENCE SERVICE SIRES



JC MR Pontiac D114K



TRIF GRIDMASTER 207K



RFS CREDENTIALS L49



CLRS/KRN OCTANE 979L

BRED HEIFERS

## REFERENCE SERVICE SIRES

Name	ASA #	Breeds	HPS	Color	Sire	Dam											
<b>JC MR PONTIAC D114K</b>	<b>4029546</b>	<b>3/4 SM 1/4 AN</b>	<b>Homo Polled</b>	<b>Homo Black</b>	<b>GIBBS 9114G ESSENTIAL</b>	<b>FSCR D114 LUCILLE B089XP</b>											
CE	BW	WW	YW	ADG	MCE	Milk	MWW	Stay	DOC	CW	YG	Marb	BF	REA	SF	API	TI
13.3	-1.5	89.0	135.4	0.29	7.8	23.0	67.5	20.3	15.6	40.7	-0.26	0.64	-0.020	1.07	167.4	97.0	98.7
<b>TRIF GRIDMASTER 207K</b>	<b>4115567</b>	<b>PB SM</b>	<b>Homo Polled</b>	<b>Homo Black</b>	<b>HOOK'S GALILEO 210G</b>	<b>BRIDLE BIT ECLIPSE E744</b>											
CE	BW	WW	YW	ADG	MCE	Milk	MWW	Stay	DOC	CW	YG	Marb	BF	REA	SF	API	TI
15.8	-3.6	71.3	107.3	0.22	11.2	29.7	65.3	21.5	20.8	28.3	-0.04	1.25	-0.025	0.17	214.1	108.3	98.0
<b>RFS CREDENTIALS L49</b>	<b>4220296</b>	<b>PB SM</b>	<b>Homo Polled</b>	<b>Homo Black</b>	<b>GIBBS 9114G ESSENTIAL</b>	<b>GIBBS 7382E BROAD RANGE</b>											
CE	BW	WW	YW	ADG	MCE	Milk	MWW	Stay	DOC	CW	YG	Marb	BF	REA	SF	API	TI
17.0	-1.9	89.7	151.9	0.39	10.1	26.7	71.5	19.6	15.6	45.5	-0.29	0.71	-0.027	1.17	191.0	106.2	105.7
<b>CLRS/KRN OCTANE 979L</b>	<b>4186229</b>	<b>3/4 SM 1/4 AN</b>	<b>Homo Polled</b>	<b>Red</b>	<b>CLRS JAY LENO 957J</b>	<b>CLRS GUARDIAN 317G</b>											
CE	BW	WW	YW	ADG	MCE	Milk	MWW	Stay	DOC	CW	YG	Marb	BF	REA	SF	API	TI
15.2	-2.1	77.9	121.4	0.27	8.1	18.5	57.4	19.8	4.9	27.5	-0.33	1.05	-0.037	0.99	189.3	101.6	96.3



Take Your Pick  
of the Flush!



WS Gadget 40G



WS Electra E88



CLRS Genome 979G

**GADGET x ELECTRA E88**  
*OR* **GADGET x GENOME 979G**

These are foundation females. Choose between Electra E88 or Genome 979G on the dam side. These are elite genetics from some of the best red females in the breed! **Retaining the right to one flush with a minimum of 8 transferable eggs and an open top.**



Lot 119A



Lot 119B



Lot 119C

**119A**

**RFS M47**

Rydeen Farms **Red | Homo Polled | PB SM | Open Heifer**  
BD: 2/27/24 | Tattoo: M47 | ASA#: 4368934 | Adj. BW: 89 | Adj. WW: 738

SIRE **WS GADGET 40G**  
KBHR SNIPER E036  
WS EMOTION E127  
CDI VERDICT 220Y  
DAM **WS ELECTRA E88**  
HSF MISS SKY 87U

Genomic Enhanced EPDs

	CE	BW	WW	YW	ADG	MCE	Milk	MWW	Stay	Doc	CW	YG	Marb	BF	REA	API	TI
EPD	16.9	-0.9	101.0	153.0	0.33	9.5	20.7	71.1	17.7	15.0	51.2	-0.25	0.38	-0.052	0.91	168.5	101.6
%	4	15	2	3	10	10		15	25	15	3		20		45	10	3

**119B**

**RFS M97**

Rydeen Farms **Red | Homo Polled | PB SM | Open Heifer**  
BD: 3/5/24 | Tattoo: M97 | ASA#: 4368983 | Adj. BW: 82 | Adj. WW: 723

SIRE **WS GADGET 40G**  
KBHR SNIPER E036  
WS EMOTION E127  
CDI VERDICT 220Y  
DAM **WS ELECTRA E88**  
HSF MISS SKY 87U

Genomic Enhanced EPDs

	CE	BW	WW	YW	ADG	MCE	Milk	MWW	Stay	Doc	CW	YG	Marb	BF	REA	API	TI
EPD	17.1	-2.2	98.8	151.6	0.33	9.8	20.7	70.0	16.2	13.9	42.4	-0.26	0.36	-0.074	0.65	166.2	101.4
%	4	5	3	4	10	5		20	45	25	15		20	50		10	3

**119C**

**RFS M59**

Rydeen Farms **Red | Homo Polled | PB SM | Open Heifer**  
BD: 2/28/24 | Tattoo: M59 | ASA#: 4368945 | Adj. BW: 87 | Adj. WW: 784

SIRE **WS GADGET 40G**  
KBHR SNIPER E036  
WS EMOTION E127  
IR IMPERIAL D948  
DAM **CLRS GENOME 979G**  
K M J MS RUBICON E353

Genomic Enhanced EPDs

	CE	BW	WW	YW	ADG	MCE	Milk	MWW	Stay	Doc	CW	YG	Marb	BF	REA	API	TI
EPD	17.1	-1.0	88.2	140.5	0.33	10.5	19.9	63.9	13.7	18.2	38.1	-0.40	0.60	-0.071	1.06	170.0	100.7
%	4	15	20	10	10	3		45		3	20	50	5	50	15	10	3

OPEN HEIFERS



Take Your Pick  
of the Flush!



WS Electra E88 - Maternal Granddam



KBHR Genetic Force G095

## GENETIC FORCE X J133

Choose red or black out of our sweet J133 donor. The breeding possibilities are endless! Looking for a red outcross pedigree? How about a red Impact granddaughter? Check out the flush brothers in the yearling bull division! *Retaining the right to one flush with a minimum of 8 transferable eggs and an open top.*

### 120A

### RFS M69

Rydeen Farms | **Red | Homo Polled | PB SM | Open Heifer**  
BD: 3/1/24 | Tattoo: M69 | ASA#: 4368955 | Adj. BW: 83 | Adj. WW: 751

TRPH RRR NIGHTFORCE B30

**SIRE KBHR GENETIC FORCE G095**

KBHR E197

LCDR IMPACT 134F

**DAM RFS MISS J133**

WS ELECTRA E88

Genomic Enhanced EPDs

	CE	BW	WW	YW	ADG	MCE	Milk	MWW	Stay	Doc	CW	YG	Marb	BF	REA	API	TI
EPD	11.8	0.0	89.0	135.4	0.29	5.7	23.7	68.1	20.4	16.6	27.6	-0.26	0.55	-0.028	0.82	170.3	97.3
%	45	30	15	20	25	45	25	5	10	50	10				10	10	10



Lot 120A



Lot 120B



Lot 120C

### 120B

### RFS M28

Rydeen Farms | **Hetero Black | Homo Polled | PB SM | Open Heifer**  
BD: 2/24/24 | Tattoo: M28 | ASA#: 4368916 | Adj. BW: 89 | Adj. WW: 752

TRPH RRR NIGHTFORCE B30

**SIRE KBHR GENETIC FORCE G095**

KBHR E197

LCDR IMPACT 134F

**DAM RFS MISS J133**

WS ELECTRA E88

Genomic Enhanced EPDs

	CE	BW	WW	YW	ADG	MCE	Milk	MWW	Stay	Doc	CW	YG	Marb	BF	REA	API	TI
EPD	11.8	2.1	100.8	157.3	0.35	5.8	23.7	74.0	18.0	18.6	41.2	-0.32	0.55	-0.049	1.03	167.4	102.4
%	45		2	2	4		45	10	25	2	15		10		20	10	2

### 120C

### RFS M5

Rydeen Farms | **Red | Homo Polled | PB SM | Open Heifer**  
BD: 2/20/24 | Tattoo: M5 | ASA#: 4368894 | Adj. BW: 84 | Adj. WW: 753

TRPH RRR NIGHTFORCE B30

**SIRE KBHR GENETIC FORCE G095**

KBHR E197

LCDR IMPACT 134F

**DAM RFS MISS J133**

WS ELECTRA E88

Genomic Enhanced EPDs

	CE	BW	WW	YW	ADG	MCE	Milk	MWW	Stay	Doc	CW	YG	Marb	BF	REA	API	TI
EPD	12.0	1.3	100.3	153.1	0.33	5.6	23.7	73.8	19.3	14.4	43.0	-0.27	0.58	-0.028	1.05	172.1	103.3
%	45	50	2	3	10		45	10	15	20	10		5		20	5	2

OPEN HEIFERS





**Lot 121A**

*Take Your Pick  
of the Flush!*



**LCDR Impact 134F**  
Maternal Grand sire of Lots 121A and 121B



**KBHR E197**  
Maternal Granddam of Lots 121A and 121B



**Lot 121B**

*Daughters of* **PONTIAC X J153**

Off the charts EPD profile with performance and style. Performance Redefined. *Retaining the right to one flush with a minimum of 8 transferable eggs and an open top.*

**121A**

**RFS M38**

Rydeen Farms **Homo Black | Homo Polled | PB SM | Open Heifer**  
BD: 2/26/24 | Tattoo: M38 | ASA#: 4368925 | Adj. BW: 84 | Adj. WW: 681

SIRE **JC MR PONTIAC D114K**  
GIBBS 9114G ESSENTIAL  
FSCR D114 LUCILLE B089XP  
DAM **RFS MISS J153**  
LCDR IMPACT 134F  
KBHR E197

Genomic Enhanced EPDs

	CE	BW	WW	YW	ADG	MCE	Milk	MWW	Stay	Doc	CW	YG	Marb	BF	REA	API	TI
EPD	12.6	0.5	91.4	133.6	0.26	7.8	26.9	72.5	17.8	15.7	36.5	-0.19	0.76	-0.005	0.90	176.0	103.0
%	35	35	15	20	40	20	25	10	25	10	25		2		45	3	2

**121B**

**RFS M18**

Rydeen Farms **Homo Black | Homo Polled | PB SM | Open Heifer**  
BD: 2/23/24 | Tattoo: M18 | ASA#: 4368906 | Adj. BW: 74 | Adj. WW: 573

SIRE **JC MR PONTIAC D114K**  
GIBBS 9114G ESSENTIAL  
FSCR D114 LUCILLE B089XP  
DAM **RFS MISS J153**  
LCDR IMPACT 134F  
KBHR E197

Genomic Enhanced EPDs

	CE	BW	WW	YW	ADG	MCE	Milk	MWW	Stay	Doc	CW	YG	Marb	BF	REA	API	TI
EPD	13.7	-3.5	77.1	113.3	0.23	8.4	26.9	65.4	18.8	16.2	29.0	-0.18	0.57	-0.002	0.79	170.9	94.7
%	25	2				15	25	35	15	10	45		10			5	10

OPEN HEIFERS





**Lot 122A**



**LCDR Impact 134F**  
Maternal Grand sire of Lots 122A and 122B

*Take Your Pick  
of the Flush!*



**WS Electra E88**  
Maternal Granddam of Lots 122A and 122B



**Lot 122B**

*Daughters of* **GALILEO X J133**

Homo black, Homo polled, incredible growth, carcass, and economic traits out of our Impact x Electra E88 donor. You can start a program with one of these females. Full sibs to Lots 37 & 38.

**Retaining the right to one flush with a minimum of 8 transferable eggs and an open top.**

**122A**

**RFS M40**

Rydeen Farms **Homo Black | Homo Polled | PB SM | Open Heifer**  
BD: 2/26/24 | Tattoo: M40 | ASA#: 4368927 | Adj. BW: 86 | Adj. WW: 739

BRIDLE BIT ECLIPSE E744  
SIRE **HOOK'S GALILEO 210G**  
HOOK'S EVITA 18E  
LCDR IMPACT 134F  
DAM **RFS MISS J133**  
WS ELECTRA E88

Genomic Enhanced EPDs

EPD	CE	BW	WW	YW	ADG	MCE	Milk	MWW	Stay	Doc	CW	YG	Marb	BF	REA	API	TI
	13.0	-0.2	98.9	153.9	0.34	8.0	29.4	78.8	21.1	16.3	40.6	-0.22	0.79	-0.055	0.67	190.9	110.2
%	30	25	3	3	10	20	10	2	4	10	15		1		1	1	

**122B**

**RFS M19**

Rydeen Farms **Homo Black | Homo Polled | PB SM | Open Heifer**  
BD: 2/23/24 | Tattoo: M19 | ASA#: 4368907 | Adj. BW: 73 | Adj. WW: 678

BRIDLE BIT ECLIPSE E744  
SIRE **HOOK'S GALILEO 210G**  
HOOK'S EVITA 18E  
LCDR IMPACT 134F  
DAM **RFS MISS J133**  
WS ELECTRA E88

Genomic Enhanced EPDs

EPD	CE	BW	WW	YW	ADG	MCE	Milk	MWW	Stay	Doc	CW	YG	Marb	BF	REA	API	TI
	14.9	-1.6	89.8	133.7	0.27	9.3	29.4	74.2	20.9	15.8	38.0	-0.23	0.71	-0.054	0.68	186.1	104.2
%	15	10	15	20	35	10	10	10	4	10	20		2		1	2	

# DAUGHTERS OF Pontiac

# Pontiac

## 123

## RFS M94

Rydeen Farms **Homo Black | Homo Polled | PB SM | Open Heifer**  
BD: 3/4/24 | Tattoo: M94 | ASA#: 4368980 | Adj. BW: 89 | Adj. WW: 744

GIBBS 9114G ESSENTIAL

**SIRE JC MR PONTIAC D114K**

FSCR D114 LUCILLE B089XP

TJ PLATTE RIVER 370D

**DAM RFS MISS K56**

LCDR MS GISELLE 8G

Genomic Enhanced EPDs

	CE	BW	WW	YW	ADG	MCE	Milk	MWW	Stay	Doc	CW	YG	Marb	BF	REA	API	TI
EPD	11.7	1.2	91.5	142.0	0.32	6.5	25.9	71.6	16.8	15.0	50.1	-0.27	0.61	-0.033	1.10	165.3	99.2
%	50	50	10	10	10	40	30	15	40	15	4		4		15	10	4

- Out of a first calf heifer
- Dam's a daughter of our Giselle 8G donor



Lot 123

## 124

## RFS M29

Rydeen Farms **Homo Black | Hetero Polled | PB SM | Open Heifer**  
BD: 2/25/24 | Tattoo: M29 | ASA#: 4368917 | Adj. BW: 94 | Adj. WW: 677

GIBBS 9114G ESSENTIAL

**SIRE JC MR PONTIAC D114K**

FSCR D114 LUCILLE B089XP

CDI SCHATZ OUTLAW 220E

**DAM RFS MISS JODY J215**

D113

Genomic Enhanced EPDs

	CE	BW	WW	YW	ADG	MCE	Milk	MWW	Stay	Doc	CW	YG	Marb	BF	REA	API	TI
EPD	11.6	2.0	93.9	145.2	0.32	5.7	23.1	69.9	18.2	13.6	38.2	-0.30	0.48	-0.027	1.10	160.9	96.4
%	50		10	10	10		50	20	20	30	20		10		15	15	10

- Beautiful baldy with tons of performance
- Superb economic indexes



Lot 124

## 125

## RFS M48

Rydeen Farms **Homo Black | Homo Polled | 3/4 SM 1/4 AN | Open Heifer**  
BD: 2/27/24 | Tattoo: M48 | ASA#: 4368935 | Adj. BW: 89 | Adj. WW: 739

GIBBS 9114G ESSENTIAL

**SIRE JC MR PONTIAC D114K**

FSCR D114 LUCILLE B089XP

EGL FIRESTEEL 103F

**DAM RFS MISS J13**

LCDR MS GISELLE 8G

Genomic Enhanced EPDs

	CE	BW	WW	YW	ADG	MCE	Milk	MWW	Stay	Doc	CW	YG	Marb	BF	REA	API	TI
EPD	11.1	-1.7	77.2	124.8	0.30	4.7	26.7	65.2	16.8	16.7	38.5	-0.28	0.57	-0.022	1.09	151.2	89.1
%		25	45	35	30		30	35	30	10	35	35	25		4	25	25

- Maternal sister to Lot 55
- Dam's a daughter of our Giselle 8G donor



Lot 125

OPEN HEIFERS





Lot 126



Lot 127

## UNDERSTANDING EPDS

**Expected Progeny Differences (EPDs):** EPDs are the most accurate and effective tool available for comparing genetic levels. In using EPDs, the difference between two sires' EPDs represents the unit difference expected in the performance of their progeny. For example, if sires A and B have EPDs of +10 and -5, a 15-unit difference would be expected in their progeny (moving from -5 to +10 yields 15 units). Key to using EPDs is knowing in what units they are expressed. For example, if the above case referred to weaning weight EPDs, sire A would be expected to sire 15 pounds more weaning weight than sire B. If calving ease was the trait, sire A would be expected to sire 15 percent more unassisted births in first-calf heifers; in other words, if sire B sired 30 assists in a group of 100 heifers, we would expect sire A to require 15 assists. A percentile-ranking chart is required to determine where a bull's EPDs rank him relative to other bulls in the breed. For more detailed information about EPDs and \$ indexes, visit [www.simmental.org](http://www.simmental.org). Listed below are the units in which ASA EPDs are expressed:

**Calving Ease (CE):** Percent of unassisted births when used on heifers.

**Birth Weight (BW):** Pounds of birth weight.

**Weaning Weight (WW):** Pounds of weaning weight.

**Yearling Weight (YW):** Pounds of yearling weight.

**Maternal Calving Ease (MCE):** Percent of unassisted births in first-calving daughters.

**Milk (MLK):** Pounds of weaning weight due to milk.

**Maternal Weaning Weight (MWW):** Pounds of weaning weight due to milk and growth.

**Stability (STAY):** Percent of daughters remaining in the cowherd at six years of age.

**Docility (DOC):** Percent of offspring receiving a disposition score of 1 (docile).

**Carcass Weight (CW):** Pounds of carcass weight at 475 days.

**Yield Grade (YG):** Carcass yield grade score at 475 days.

**Marbling (Marb):** Carcass marbling score at 475 days.

126

RFS M213

Rydeen Farms | Red | Homo Polled | 3/4 SM 5/32 AR 3/32 AN | Open Heifer  
BD: 4/2/24 | Tattoo: M213 | ASA#: 4369099 | Adj. BW: 78 | Adj. WW: 742

GW MOVIN ON 183C  
**SIRE GW COPPERHEAD 919G**  
GW MISS DIRCT DRIVE 932E  
WS GADGET 40G  
**DAM RFS MISS J217**  
B97

Genomic Enhanced EPDs

	CE	BW	WW	YW	ADG	MCE	Milk	MWW	Stay	Doc	CW	YG	Marb	BF	REA	API	TI
EPD	14.2	1.2	102.4	157.4	0.34	10.1	24.6	75.7	10.2	20.2	41.7	-0.41	0.48	-0.087	1.00	141.8	99.2
%	35	1	2	10	10	45	5		2	25	10	35	4	10	40	4	

- Powerful percentage female
- Dam's a beautiful Gadget female

127

RFS M16

Rydeen Farms | Homo Black | Homo Polled | PB SM | Open Heifer  
BD: 2/23/24 | Tattoo: M16 | ASA#: 4368904 | Adj. BW: 88 | Adj. WW: 730

HHS MR ENTOURAGE 867B  
**SIRE LCDR RESERVE 210J**  
LCDR MS ECHO 43E  
CCR COWBOY CUT 5048Z  
**DAM RFS MISS J65**  
F2

Genomic Enhanced EPDs

	CE	BW	WW	YW	ADG	MCE	Milk	MWW	Stay	Doc	CW	YG	Marb	BF	REA	API	TI
EPD	11.9	3.6	105.1	164.4	0.37	7.5	19.0	71.4	15.1	16.5	52.0	-0.33	0.45	-0.046	1.23	156.0	100.6
%	45	1	1	2	25		15		10	3		15		4	20	3	

- Excellent weaning and growth numbers
- Stunning female out of a Cowboy Cut dam

**Back Fat (BF):** Inches of carcass back fat at 475 days.

**Ribeye Area (REA):** Square inches of carcass ribeye at 475 days.

**Warner-Bratzler Shear Force (WBSF):** Pounds of force required to shear a rib-eye steak.

**All-Purpose Index (API):** Dollars per cow exposed under an all-purpose-sire scenario. (See \$ Indexes for more details.)

**Terminal Index (TI):** Dollars per cow exposed under a terminal-sire scenario. (See TI for more details.)

**\$ Indexes:** Though EPDs allow for the comparison of genetic levels for many economically important traits, they only provide pieces of the economic puzzle. This is where \$ indexes come in. Through well-conceived, rigorous mathematical computation, \$ indexes blend EPDs and economics to estimate an animal's overall impact on integrated commercial production. The same technology that led to the dramatic progress in swine, poultry and dairy genetics over the last several decades was used to develop the following \$ indexes:

**All-Purpose Index (API):** Evaluates sires for use on the entire cow herd (bred to both Angus first-calf heifers and mature cows) with the portion of their daughters required to maintain herd size retained and the remaining heifers and steers put on feed and sold grade and yield.

**Terminal Index (TI):** Evaluates sires for use on mature Angus cows with all offspring put on feed and sold grade and yield.

**Using API and TI:** First, determine which index to use; if you are keeping replacements use API, if not, use TI. Then, just as with EPDs, zero in on the unit difference between bulls. (As described above, index units are in dollars per cow exposed.) The difference can be used to determine how much a bull is worth compared to another. Put another way, how much you can pay for one bull compared to another. For example, when buying an all-purpose-type sire, you can quickly figure a bull scoring +100 for API is worth an extra \$6,000 over a +50 bull if both are exposed to 30 cows over 4 years (\$50 diff. x 30 hd. x 4 yr. = \$6,000). A percentile-ranking chart is required to determine where a bull's index value ranks him relative to other bulls in the breed. For more detailed information about EPDs and \$ indexes, visit: [www.simmental.org](http://www.simmental.org)

# Embryo Division

## 128 BRIDLE BIT PRELUDE L372 Embryes

Rydeen Farms Donor Dam | Homo Black | Homo Polled | PB SM | ASA#: 4211431  
Sire | Homo Black | Homo Polled | PB SM | ASA#: 4220296

GIBBS 9114G ESSENTIAL

**SIRE RFS CREDENTIALS L49**

KBHR MEDORA G132

LBR5 GENESIS G69

**DAM BRIDLE BIT PRELUDE L372**

BRIDLE BIT MISS H024

Estimated	CE	BW	WW	YW	ADG	MCE	Milk	MWW	Stay	Doc	Marb	REA	API	TI
Calif EPDs	14.8	-0.6	95.4	154.6	0.37	7.9	27.0	74.7	18.9	16.8	1.06	0.95	203.9	115.0

- 3 Unsexed IVF Embryos sired by RFS Credentials L49
- Incredible genomic value, alongside pleasing phenotype will be the trademarks of this exciting mating
- Fresh genetics out of one of the most sought-after animals of the 2024 season



Bridle Bit Prelude L372 - Donor Dam of Lot 128

Sire

## 129 WS I LOVE LUCY Embryes

Rydeen Farms Donor Dam | Red | Homo Polled | PB SM | ASA#: 4231604  
Sire | Red | Homo Polled | PB SM | ASA#: 4097000

WS GADGET 40G

**SIRE RFS BRUNO K18**

WS ELECTRA E88

MR SR RED OCTOBER G1761

**DAM WS I LOVE LUCY**

WS FAST FORWARD J30

Estimated	CE	BW	WW	YW	ADG	MCE	Milk	MWW	Stay	Doc	Marb	REA	API	TI
Calif EPDs	13.7	-1.7	94.0	148.7	0.35	7.4	20.9	67.9	19.2	13.3	0.52	1.08	174.8	101.6

- 3 Unsexed IVF Embryos sired by RFS Bruno K18
- Unique red genetics out of our newest red donor!



WS I Love Lucy - Donor Dam of Lot 129

Sire

## 130 RFS MISS L48 Embryes

Rydeen Farms Donor Dam | Homo Black | Homo Polled | PB SM | ASA#: 4220295  
Sire | Homo Black | Homo Polled | PB SM | ASA#: 4115567

HOOK'S GALILEO 210G

**SIRE TRIF GRIDMASTER 207K**

KBHR DEBUTANTE H113

GIBBS 9114G ESSENTIAL

**DAM RFS MISS L48**

KBHR MEDORA G132

Estimated	CE	BW	WW	YW	ADG	MCE	Milk	MWW	Stay	Doc	Marb	REA	API	TI
Calif EPDs	14.6	-2.4	82.4	129.0	0.29	9.4	28.2	69.4	20.1	18.9	1.00	0.70	199.5	107.4

- 3 Unsexed IVF Embryos sired by TRIF Gridmaster 207K
- Incredible mating, dam is full sister to RFS Credentials.
- Outcross genetics



RFS Miss L48 - Donor Dam of Lot 130

Sire

## 131 CLRS GENOME 979G Embryes

Rydeen Farms Donor Dam | Red | Homo Polled | 3/4 SM 1/4 AN | ASA#: 3563356  
Sire | Red | Homo Polled | PB SM | ASA# 3991776

THSF LOVER BOY B33

**SIRE ROCKIN H CAPTIVATE J75**

ROCKIN H MS.CAROLINA

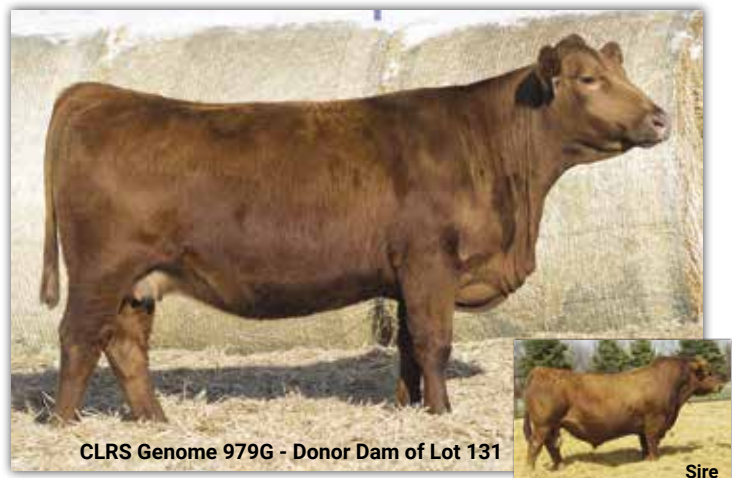
IR IMPERIAL D948

**DAM CLRS GENOME 979G**

K M J MS RUBICON E353

Estimated	CE	BW	WW	YW	ADG	MCE	Milk	MWW	Stay	Doc	Marb	REA	API	TI
Calif EPDs	18.9	-3.0	77.8	124.3	0.29	11.1	25.3	64.1	18.1	17.8	0.72	1.05	186.8	99.8

- 3 Unsexed IVF Embryos sired by Rockin H Captivate J75
- Take a look at this opportunity! Elevate your red program with a proven donor--see the Genome progeny throughout the yearling bull and open heifer division.



CLRS Genome 979G - Donor Dam of Lot 131

Sire



# Semen Division



Lot 132

**132**

**LCDR IMPACT 134F**

Rydeen Farms

**Homo Black | Homo Polled | PB SM | Semen**  
BD: 3/18/18 | Tattoo: 134F | ASA#: 3491039 | Adj. BW: 96 | Adj. WW: 806

TJ MAIN EVENT 503B

**SIRE CDI MAINLINE 265D**

HOOK'S BEYONCE 82B

CLRS GRADE-A 875 A

**DAM WS MISS SUGAR C4**

WS ANISE A71

Genomic Enhanced EPDs

	CE	BW	WW	YW	ADG	MCE	Milk	MWW	Stay	Doc	CW	YG	Marb	BF	REA	API	TI
EPD	4.5	6.3	118.1	188.1	0.44	1.8	21.4	80.3	14.1	17.5	65.2	-0.42	0.30	-0.094	1.28	137.2	100.8
%			1	1	1			2		4	1	40	30	15	2	45	3

- Selling 30 units, in packages of 10 units, conventional semen
- Never before offered for sale—here's your chance to sample one of the best!



Lot 133

**133**

**RFS HERALD H104**

Rydeen Farms

**Hetero Black | Homo Polled | PB SM | Semen**  
BD: 3/12/20 | Tattoo: H104 | ASA#: 3782066 | Adj. BW: 90 | Adj. WW: 798

CDI MAINLINE 265D

**SIRE LCDR IMPACT 134F**

WS MISS SUGAR C4

REMINGTON LOCK N LOAD54U

**DAM BCLR MISS BALDY E704**

WS MOTHER LODE W21

Genomic Enhanced EPDs

	CE	BW	WW	YW	ADG	MCE	Milk	MWW	Stay	Doc	CW	YG	Marb	BF	REA	API	TI
EPD	10.6	3.2	97.2	148.4	0.32	3.7	23.6	72.1	18.0	10.7	37.8	-0.44	0.27	-0.091	1.04	146.9	92.0
%			4	5	10		50	15	25		20	30	35	15	20	30	15

- Selling 30 units, in packages of 10 units, conventional semen



Lot 134

**134**

**RFS HEAVY HITTER H45**

Rydeen Farms

**Homo Black | Homo Polled | PB SM | Semen**  
BD: 3/3/20 | Tattoo: H45 | ASA#: 3782005 | Adj. BW: 90 | Adj. WW: 864

CDI MAINLINE 265D

**SIRE LCDR IMPACT 134F**

WS MISS SUGAR C4

REMINGTON LOCK N LOAD54U

**DAM BCLR MISS BALDY E704**

WS MOTHER LODE W21

Genomic Enhanced EPDs

	CE	BW	WW	YW	ADG	MCE	Milk	MWW	Stay	Doc	CW	YG	Marb	BF	REA	API	TI
EPD	9.4	3.9	112.4	176.8	0.40	2.2	20.9	77.0	16.6	15.5	46.9	-0.62	0.00	-0.120	1.47	135.0	94.6
%			1	1	1			4	40	15	10	1		2	1	45	10

- Selling 30 units, in packages of 10 units, conventional semen

# Proven Herd Sire

## WS Gadget 40G

SELLING FULL POSSESSION



**WS Gadget 40G - Lot 135**



**RFS Klondike K35**  
Sold for \$12,500 in our 2023 sale  
Owned by Anderson Farms



**RFS Bruno K18**  
Sold for \$25,000 in our 2023 sale  
Owned by Diamond H Ranch



**RFS Kickoff K54**  
Sold for \$30,000 in our 2023 sale  
Owned by Smith Farms



**RFS Top Gun K207**  
Sold for \$10,000 in our 2023 sale  
Owned by Schnabel Ranch



**RFS Luna K63**  
Sold for \$30,000 in our 2023 sale  
Owned by Diamond H Ranch & All Beef



**RFS Keystone K92**  
Sold for \$18,000 in our 2023 sale  
Owned by Thesing's Riverside Ranch

**135**

**WS GADGET 40G**

Rydeen Farms

Red | Homo Polled | PB SM | Proven Herd Sire  
BD: 4/2/19 | Tattoo: 40G | ASA#: 3587940 | Adj. BW: 87 | Adj. WW: 803

BAR CK HUNTER 3006A

SIRE **KBHR SNIPER E036**

KBHR C078

ES CLASSIFIED CA46

DAM **WS EMOTION E127**

WS DIALED IN A12

Genomic Enhanced EPDs

CE	BW	WW	YW	ADG	MCE	Milk	MWW	Stay	Doc	CW	YG	Marb	BF	REA	API	TI
16.4	0.3	109.6	166.6	0.36	10.3	20.2	74.9	12.3	18.0	59.2	-0.24	0.23	-0.076	0.79	150.3	101.6
%	5	35	1	1	3	3	10	3	1	40	50	25	3			

Gadget has roamed our pastures and now you have the opportunity to have him roam yours. He is as versatile as his name, he can fix most anything. Proven progeny, proven results.

GENETICS

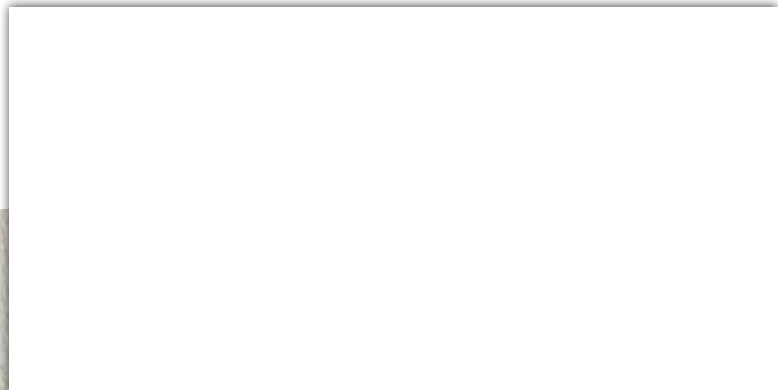


# Rydeen Farms

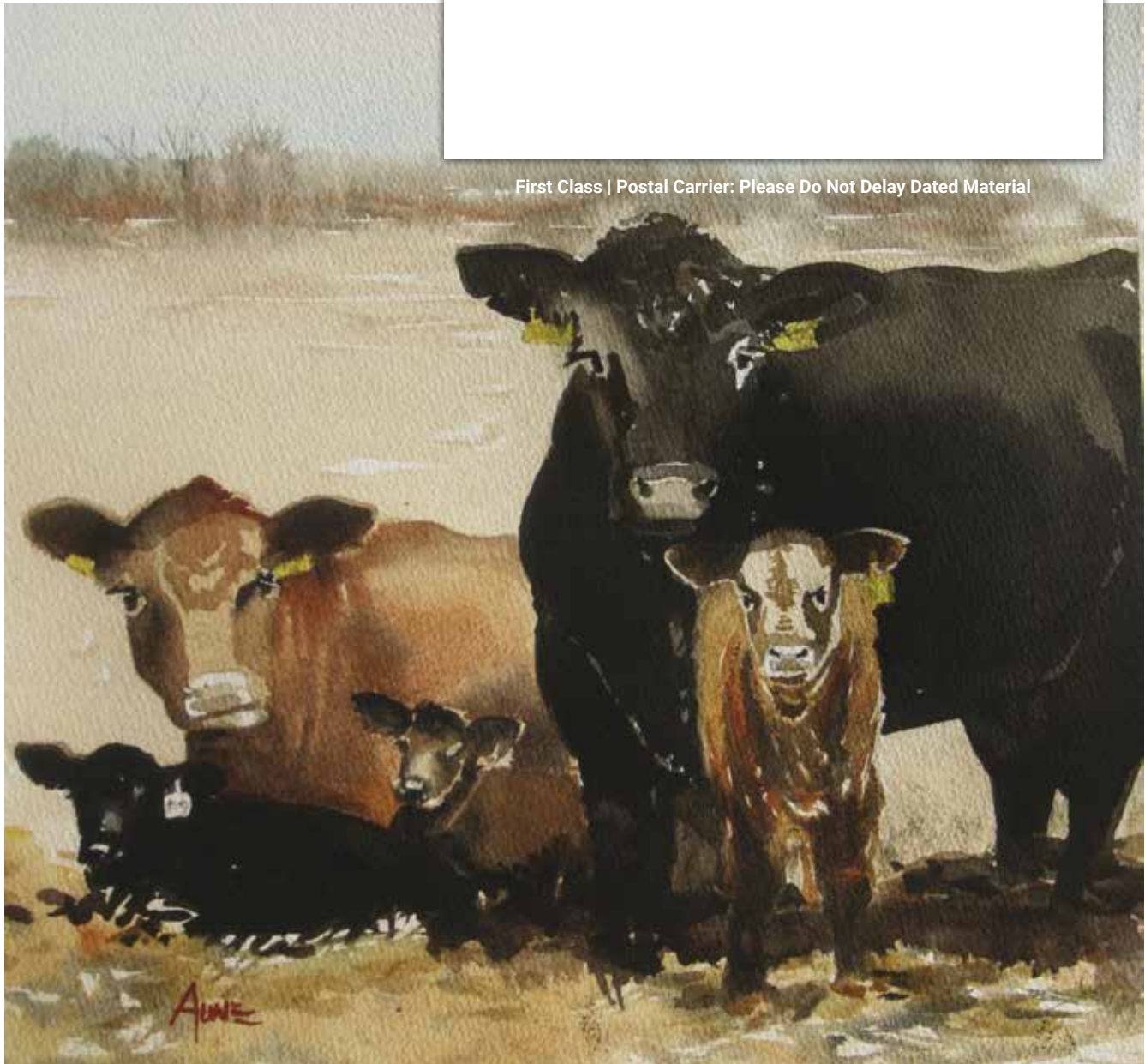
SINCE 1897

Polled Red & Black Simmental Cattle

47499 199th Ave  
Clearbrook, MN 56634



First Class | Postal Carrier: Please Do Not Delay Dated Material



**RYDEEN FARMS' 27<sup>th</sup> ANNUAL GENETICS WITH VISION SALE**  
**SATURDAY, FEBRUARY 8, 2025** 2:00 PM CST / CLEARBROOK, MN

**SIMMENTAL & SIMANGUS BULLS & FEMALES**

73 Black & Red Yearling Bulls / 7 Aged Bulls [18 months] / 38 Bred & 15 Open Females

**DVAuction**  
Broadcasting Real-Time Auctions

PRINTED BY:  
**LIVESTOCK  
DIRECT**  
www.livestockdiret.com