

Semen Guide



2024

Serious Genetic Value.

2024 Allied Semen and Genetics

It is both a privilege and a pleasure to finish this year's Allied Semen and Genetics sire directory. Each year we see so much improvement and new excitement from the rapid and constant genetic advancement that sets this publication apart. Regardless of your specific genetic needs and or breeding objectives, you can find what you need on these pages. Elite calving ease bulls, industry growth leaders, maternal sires with literally no equal in the beef business and sires capable of taking carcass value to the next level with added yield and product to go with huge potential for Marbling and grade. You will also find a wonderful selection of multi-purpose, balanced bulls that can do it all. We are convinced that our customers deserve it all. No problems, accelerated income and profit along with cattle that are pleasing to be around with all of the convenience traits and physical prowess that a producer could ask for. You just don't have to settle any more. Expect it all and get it all!

One of the great tools that help these seedstock providers advance so quickly and create such a valuable and uniform product is the RightMate and RightChoice technology. So many breeders (21,000 cows mated in 2023) lean on Top Genomics to help bolster their decision making and get the most from their investment in genomics. The speed and accuracy that can be employed for the improvement of profit using these genomic tools is truly paradigm changing. If you aren't taking advantages of the power of RightMate and RightChoice, consider making the jump this breeding season. You choose the sires that fit your needs and breeding goals, then let RightMate precision mate them to the cows they will work with the best for progress. Precision genomic mating tools are now available for commercial herds through our new RightBull menu of options. Give us a call for more information or check out the promotional videos at www.alliedgeneticresources.com.

Sincerely,
Marty Ropp, Founder
Allied Genetic Resources

Serious Genetic Value.



Meet the Allied Team

MARTY ROPP

406-581-7835

mroppagr@gmail.com

ROCKY FORSETH

406-590-7984

rockyforseth89@gmail.com

COREY WILKINS

256-590-2487

coreyagr@gmail.com

LEOMA WELLS

559-696-4941

cattledatagenie@gmail.com

DR. MAHDI SAATCHI

saatchi.mahdi@gmail.com

TOM HOOK

507-829-5283

hookfarms@mvtvwireless.com

JARED MURNIN

406-321-1542

jmurninagr@gmail.com

ORigen

www.ORigenBEEF.org

ORigen is a proud partner of Allied Genetic Resources. ORigen and Allied Genetic Resources are two genetic companies, owned by breeders, that have united to help both groups of breeders market their Master Breeder Genetics. Through this partnership, you as customers can purchase semen from both organizations through one location by simply contacting an Allied representative or ORigen. ORigen is also a custom collection facility that collects and distributes Allied sires.

EPDs listed current April 1, 2024.

2024 PUREBRED AND 3/4 OFFERING AVERAGE - 81 BULLS

\$API 176 (TOP 3%) AND \$TI 100 (TOP 3%)

14 NEW ALLIED PB AND 3/4 BULLS \$API 184 (TOP 2%) AND \$TI 104 (TOP 2%)

2024 SIMANGUS OFFERING AVERAGE - 48 BULLS

\$API 173 (TOP 4%) AND \$TI 100 (TOP 3%)

15 NEW ALLIED SIMANGUS BULLS \$API 180 (TOP 2%) AND \$TI 106 (TOP 1%)

Improved Buying Confidence with Greater Genomic **ASSURANCE**

Access to more and better information has always been key to making wise decisions. The evolution and improvement of genetic evaluation tools too has given us an ever-clearer picture of the true genetic makeup of cattle and thus a better view of the value proposition. RightMate, powered by Top Genomics LLC is taking the evaluation of genetics and genomics one giant step further. By combining specific genomic information with the long-proven value of EPDs, this new advancement in technology improves our depth and precision when evaluating the actual ability to transmit value and profit.

The 3 Accreditation Logos below are designed to simplify bull selection and improve buyer confidence by more accurately describing the genetics offered and by reducing risk. What this means to you as a customer is a much greater assurance that you are getting both what you want and need from the genetics you purchase. What it means to your seedstock provider is access to RightMate technology that simply sets them apart from the rest of the industry.



ACCREDITED GENOMIC PLUS – For the majority of producers who simply need consistent and balanced genetic improvement, without genomic setbacks, G+ Accredited bulls should be on your list for premium purchase. These sires will absolutely move you forward

for both cost reduction and income producing traits and substantially reduce risk when compared to all other evaluation programs. It's simple, the right genes are in these bulls to help secure a profitable future and the they have great EPDs to match!



ACCREDITED TERMINAL MATE – Just like an ATM machine makes it simpler to access your cash, the ATM Logo highlights bulls accredited to generate extra cash income as soon as your next calf crop! These bulls are meant specifically to use only on mature cows and for the purpose of adding performance, pay weight and end product value to market.



ACCREDITED CALVING EASE

– Simply find bulls with the ACE logo for third party Accredited, secure Calving Ease bulls. Though we have had tools in the past to assist in choosing heifer bulls, we've never had one nearly this effective. The reduced risk that comes with this

genomic certification will simply make your decisions easier and your heifer calving season more successful. Purchase special purpose ACE bulls with confidence. They will deliver consistent and predictable calving ease.

MARTY ROPP 406-581-7835

RightChoice
powered by TOP GENOMICS

RightMate

powered by  TOP GENOMICS

You've narrowed down the list of the sires that will drive your program's direction for the future. The success of your operation is in the balance. Now, you can go to the next level with a **RightMate** evaluation powered by **Top Genomics LLC** to prescribe the bulls that genomically compliment each female. Sharpen the list of candidate sires, maximize improvement potential, improve calf crop uniformity and avoid the wasted matings that take dollars from the operation and can lead to early culling of females based simply on a missed opportunity for her to do better.

Whether you are making matings for each cow in the herd or making the expensive decision for a flush of the best donor in the herd, RightChoice is a must for your decision-making tool box. The best sire choice for each cow has always been our focus as breeders but in fact, the bulls you don't choose from your options are even more important.

GIVE US A CALL FOR MORE INFORMATION AND TO MAKE THE POWER OF RIGHTCHOICE WORK FOR YOU.

 **TOP GENOMICS**
Improving Beef Through Genomics
DR. MAHDI SAATCHI

www.alliedgeneticresources.com
www.topgenomics.com

ALLIED
GENETIC RESOURCES
MARTY ROPP 406-581-7835

KBHR GLOBAL J138

Homozygous Black, Homozygous Polled || PB SM
 ASA# 3943850 DOB: 3/23/2021 Tattoo: J138

Owned by:
 All Beef LLC || Rydeen Farms || Woonallee Simmental || Kellers Broken Heart Ranch



- Global's first calves selling in 2024 are proving his value in a big way!
- This G+ and ACE genomically certified Purebred offers tremendous, balanced value across the board with special strengths for STAY, Docility and Marbling.
- The 2022, stick out top seller at Keller Broken Heart Ranch at \$75,000
- The 106Z donor dam has done it time and time again. This very well might be her best son to date.



Global son at Rydeen Farms



Global son at Rydeen Farms

EPD	DIRECT					MATERNAL				CARCASS				S INDEX		
	CE	BW	WW	YW	ADG	MCE	MILK	MWW	STAY	DOC	CW	YG	MARB	REA	API	TI
16.7	-1.5	78.0	129.5	0.32	11.6	23.8	62.7	21.1	18.4	24.2	-0.32	0.68	0.74	186.7	97.8	
0.65	0.78	0.73	0.72	0.72	0.39	0.28	0.38	0.43	0.63	0.57	0.41	0.52	0.50	-	-	
5	10	50	25	10	1	45	50	4	2	65	80	3	80	1	10	

SEMEN \$30

Contact Allied to order semen.



CCR COWBOY CUT 5048Z
 SIRE: WS PROCLAMATION E20Z
 WS MISS SUGAR C4

WS HOT BEEF X38
 DAM: BAR CK MS X38 106Z
 BAR CK MS MEAT MKR 323T



Homozygous Black, Homozygous Polled || PB SM
 ASA# 3999260 DOB: 6/2/2021 Tattoo: J425

Owned by:
 All Beef LLC || JC Simmental || Irvine Ranch

- Heifer safe, ACE qualified Hook's Eagle 6E son out of one of the most genetically potent donors in the breed.
- His first calves confirm his value as a Purebred heifer bull. Calves have tremendous vigor at birth.
- Deep sided, thick, clean and attractive on the profile, Boomer is a



Dam of Boomer

prototypical Simmental sire for all segments of the beef business.

- His dam too is nearly ideal with a tremendous udder for suspension and teat size and a stunning genetic evaluation.



Sire of Boomer

IR/JLN BOOMER J425



	DIRECT					MATERNAL					CARCASS				S INDEX	
	CE	BW	VV	YW	ADG	MCE	MILK	MWW	STAY	DOC	CW	YG	MARB	REA	API	TI
EPD	15.5	-2.5	91.2	142.6	0.32	7.9	24.3	69.9	17.7	18.5	26.9	-0.38	0.60	1.28	180.1	104.8
ACC	0.54	0.61	0.49	0.49	0.49	0.34	0.27	0.34	0.39	0.46	0.45	0.36	0.42	0.43	-	-
RANK	10	4	15	10	10	20	40	20	25	2	55	55	5	2	2	2

HOOK'S BLACK HAWK 50B
 SIRE: HOOK'S EAGLE 6E
 HOOK'S CRYSTAL 1C

KBHR HIGH ROAD E283
 DAM: KBHR IR/JLN ASTORIA G119
 BAR CK MS X38 106Z



SEMEN \$30

Contact Allied to order semen.

ORigen **ALLIED**
 GENETIC RESOURCES

BROWN RRR EMBLEM J3541



Homozygous Black, Homozygous Polled || PB SM
 ASA# 3886910 DOB: 2/10/2021 Tattoo: J3541

Owned by:
 ALL Beef LLC || Wonalee Simmentals || Select Sires || RA Brown Ranch ||
 Reflected R Ranch || JC Simmental

- Brought in partnership with Select Sires, Emblem is part of a strong plan to move forward with the great Eagle lines for the future.
- Massive in terms of width and body, this sound structured, quiet natured bull is very difficult to find fault with him in person.
- Absolutely complete across the board for genetic values he puts 13 traits in the top 1/3 of all Purebred bulls.
- Emblem was tremendous in terms of semen collection as well often exceeding 1200 straws per collection.



Maternal grandsire of Emblem



Sire of Emblem

	DIRECT					MATERNAL					CARCASS				S INDEX	
	CE	BW	WW	YW	ADG	MCE	MILK	MWW	STAY	DOC	CW	YG	MARB	REA	API	TI
EPD	16.7	-2.7	83.3	131.0	0.30	7.8	29.0	70.5	19.3	16.8	29.6	-0.32	0.52	0.94	177.0	98.4
ACC	0.48	0.47	0.47	0.46	0.46	0.30	0.27	0.34	0.38	0.46	0.43	0.36	0.43	0.43	-	-
RRR	5	3	30	25	20	20	15	15	15	10	45	80	10	35	3	5

SEMEN \$30

Contact Allied to order semen.



HOOK'S BLACK HAWK 50B
 SIRE: HOOK'S EAGLE 6E
 HOOK'S CRYSTAL 1C



MCM TOP GRADE 018X
 DAM: HRM MS TOP GRADE A310
 WCS MS FORCE 807U



Homozygous Black, Homozygous Polled || PB SM
 ASA# 3561070 DOB: 3/12/2019 Tattoo: G9117

Owned by:
 Doll Simmental || All Beef LLC

- Few other sires put together the combination of physical prowess and maternal genetic punch offered by Resource.
- Out of commission with an injury in the spring of 2023, he is back in semen production and inventory is available!
- Currently 3 full sisters are front line donors including Bridle Bit Choice G994, the dam of JC MR Gold Rush.



WBF Patton K059, Resource son



\$100,000 top seller at Bridle Bit Simmentals

- Bridle Bit Miss B452 is among the greatest living donors in the Simmental breed. Her progeny list includes 9 breeder bulls with more to come!

BRIDLE BIT RESOURCE G9117



	DIRECT					MATERNAL					CARCASS				S INDEX	
	CE	BW	VW	YW	ADG	MCE	MILK	MWW	STAY	DOC	CW	YG	MARB	REA	API	TI
EPD	16.0	-0.9	82.3	133.9	0.32	9.0	30.3	71.3	18.4	17.0	46.3	-0.43	0.32	1.37	161.1	91.5
ACC	0.66	0.77	0.71	0.72	0.72	0.37	0.33	0.42	0.39	0.54	0.56	0.43	0.54	0.53	-	-
RANK	10	15	35	20	10	10	10	15	20	5	10	35	25	1	15	15

HOOK'S BEACON 56B
 SIRE: HOOK'S ENCORE 65E
 HOOK'S CHATTER 63C

SAND RANCH HAND
 DAM: BRIDLE BIT MISS B452
 BRIDLE BIT MISS Y183



SEMEN \$40

Contact Allied to order semen.

ORigen **ALLIED**
 GENETIC RESOURCES

GIBBS 9114G ESSENTIAL



Homozygous Black, Homozygous Polled || PB SM
 ASA# 3716905 DOB: 9/5/2019 Tattoo: 9114G

Owned by:
 Gibbs Farms || All Beef LLC || Genex || Salinas Farms || J/C Simmental

- Few highly proven bulls of any breed sire the kind of spread from BW to WW and YW that Essential offers. He is just special.
- His sons are topping sales everywhere, because they are standouts with great feet, disposition, and dominant growth.
- A Whopping 10 traits in the top 10% of all Purebreds and 4 more in the top 15%.
- First daughters look really good as well with exceptional fertility and disposition at calving.



RFS Traveler, \$95,000 sale topping Essential son at Rydeen Farms



Gibbs Signature, top selling Essential son from Gibbs Farms

EPD	DIRECT					MATERNAL					CARCASS				S INDEX	
	CE	BW	WW	YW	ADG	MCE	MILK	MWW	STAY	DOC	CW	YG	MARB	REA	API	TI
16.0	-1.6	100.6	171.2	0.44	10.5	28.4	78.6	16.9	21.2	61.2	-0.28	0.45	1.48	174.9	106.5	
0.68	0.87	0.84	0.83	0.83	0.39	0.21	0.35	0.37	0.77	0.60	0.47	0.60	0.57	-	-	
10	10	2	1	1	3	15	2	35	1	1	90	15	1	4	1	

SEMEN \$30

Contact Allied to order semen.



CCR WIDE RANGE 9005A
 SIRE: GIBBS 7382E BROAD RANGE
 SSF BLK LOUISE Y534

HOOK'S BROADWAY 11B
 DAM: GIBBS 7153E STAR 3136A
 GIBBS 3136A STAR 0589X



Homozygous Black, Homozygous Polled || PB SM
 ASA# 3603651 DOB: 1/31/2019 Tattoo: G69

Owned by:
Genex || Little Bitterroot || All Beef LLC || Hook Farms

- A true phenom among proven sires and one of the most unique combinations of maternal and terminal traits ever evaluated.
- It just isn't often that the #1 proven \$TI sire in the breed also makes right sized, great uddered replacement females that excel for Docility, udder quality and have great feet.



\$200,000 Genesis daughter at 2024 Bridle Bit Simmental Sale



CLRS King James, Genesis son

- Physically too the Genesis progeny are long sided, thick made and have wonderful structural soundness.
- More proof that genetically, you deserve to and can have it all.

LBR GENESIS G69



	DIRECT					MATERNAL					CARCASS				S INDEX	
	CE	BW	VV	YW	ADG	MCE	MILK	MWW	STAY	DOC	CW	YG	MARB	REA	API	TI
EPD	8.6	3.2	113.3	173.8	0.38	4.1	23.6	80.2	17.7	17.4	69.4	-0.15	0.90	1.04	184.1	116.3
ACC	0.68	0.91	0.89	0.88	0.88	0.55	0.50	0.59	0.37	0.82	0.70	0.51	0.68	0.64	-	-
RANK	85	90	1	1	2	85	50	2	25	4	1	99	1	20	2	1

CCR COWBOY CUT 5048Z
 SIRE: WS PROCLAMATION E202
 WS MISS SUGAR C4

HOOK'S XAVIER 14X
 DAM: LBR DIANA D69
 LBR DOUBLE TAKE X14



SEMEN \$30

Contact Allied to order semen.



CLRS KING JAMES 616K



Homozygous Black, Homozygous Polled || PB SM
 ASA# 4031931 DOB: 1/24/2022 Tattoo: CLRS 616K

Owned by:
 Clear Springs || All Beef LLC || Genex

- King James' first calves are making a splash with wonderful type, grow and substance.
- Physically, 616K is an absolute tank! Deep and massive, he has one of the most perfect hoof structures you could design with great heel depth and toe shape.
- Genesis is one of the most unique sires of value in the history of the beef business. King James is a little more moderate for Birth Weight and Mature size than his famous sire but maintains excellent grow and top 1% Marbling.
- At +188 for \$API and +109 \$TI he is among the highest echelon of sires for generating real profit.



Sire of King James



Maternal Brother to King James

	DIRECT					MATERNAL					CARCASS				S INDEX	
	CE	BW	WW	YW	ADG	MCE	MILK	MWW	STAY	DOC	CW	YG	MARB	REA	API	TI
	12.6	0.4	95.4	144.3	0.31	6.9	22.6	70.2	18.4	13.5	43.8	-0.22	0.89	0.81	187.7	109.2
RMV, K, EPD	0.43	0.47	0.46	0.46	0.46	0.27	0.21	0.29	0.34	0.44	0.35	0.41	0.41	-	-	
RMV, K, EPD	35	35	10	10	15	35	55	20	20	30	10	99	1	65	1	1

SEMEN \$30

Contact Allied to order semen.



WS PROCLAMATION E202
 SIRE: LBRS GENESIS G69
 LBR DIANA D69

GW-WBF SUBSTANCE 820Y
 DAM: CLRS DORA 616D
 CLRS ALWAYS XCELLENT



Homozygous Black, Homozygous Polled || PB SM
 ASA# 4040505 DOB: 2/17/2022 Tattoo: 30K

Owned by:
 APEX Cattle

HA COVENANT 30K



PB SIMMENTAL

- His first calf crop is proving him as a 'truly great' breeding bull! Calves are blessed with very consistent calving ease, excellent quality, eye appeal, structure, and exceptional, early performance.
- He is the 'true standout' Galileo son in terms of phenotype, balance, and his impressive genomic data!
- Great dispositioned, excellent feet and legs, deep-ribbed and powered up with impressive natural thickness.
- First 73 calves born unassisted at APEX, with a large portion from first calf heifers! Breed him to an entire heifer crop, flush your best donors and breed a bunch of cows knowing that he will add value, quality, and market returns to every calf he sires.
- Use Right Mate or the Planned Mating calculator to see the superb EPD and Indexes projected in utilizing him this year! The resulting data will be impacting, ahead of most any purebred sire in the breed.
- For correct-structured, great-footed, docile calves that have that extra volume, fleshing ability, and eye appeal, make sure you order plenty of his semen.

	DIRECT					MATERNAL					CARCASS				S INDEX	
	CE	BW	WW	YW	ADG	MCE	MILK	MWW	STAY	DOC	CW	YG	MARB	REA	API	TI
EPD	17.2	-0.6	88.4	139.2	0.32	9.6	26.7	70.8	20.1	18.4	44.5	-0.32	0.76	0.94	190.9	104.9
ACC	0.47	0.55	0.51	0.51	0.51	0.26	0.26	0.31	0.33	0.47	0.43	0.35	0.43	0.41	-	-
RANK	4	20	20	15	10	10	25	15	10	2	10	80	2	35	1	2

BRIDLE BIT ECLIPSE E744
 SIRE: HOOK'S GALILEO 210G
 HOOK'S EVITA 18E

GW-WBF SUBSTANCE 820Y
 DAM: HOOK'S CERES 11C
 HOOK'S SARITA 92Y



SEMEN \$30

Contact Allied to order semen.



KBHR HONOR H060



Homozygous Black, Homozygous Polled || PB SM
 ASA# 3789447 DOB: 3/20/2020 Tattoo: H060

Owned by:
 All Beef LLC || Keller Broken Heart Ranch || Hook Farms || Eickacher Simmentals || Gibbs Farms || ABS Global || Woonallee Simmental

- Few, if any, Purebred sires that are documented to work well on heifers, command so much stoutness, muscle and bone in their progeny.
- Tremendous thickness of top, massive-quartered sire that charts 13 traits in the top 20% of the breed or higher.
- Out of the legendary WS Sugar C4 donor, Honor was the \$100,000 top seller at the 2022 Keller Broken Heart sale.
- Expect extra heel depth and foot size from this stout featured breed leader.



Honor daughter at Kellers Broken Heart



Honor son at TSN Simmentals

EPD	DIRECT					MATERNAL				CARCASS				S INDEX	
	CE	BW	WW	YW	ADG	MCE	MILK	MWW	STAY	DOC	CW	YG	MARB	REA	API
17.3	-2.0	86.8	132.2	0.28	10.5	28.6	71.9	19.3	10.3	37.4	-0.33	0.54	1.17	178.5	100.2
0.77	0.90	0.86	0.85	0.85	0.47	0.44	0.52	0.44	0.79	0.70	0.51	0.65	0.62	-	-
3	10	20	20	30	3	15	15	15	70	20	80	10	10	3	4

SEMEN \$30

Contact Allied to order semen.



HOOKS SHEAR FORCE 38K
 SIRE: HOOK'S BEACON 56B
 HOOKS ZAFIRAH 41Z

CLRS GRADE-A 875 A
 DAM: WS MISS SUGAR C4
 WS ANISE A71



Homozygous Black, Homozygous Polled || PB SM
 ASA# 3582577 DOB: 1/28/2019 Tattoo: 274G

Owned by:
 ABS Global || River Creek Farms || All Beef LLC || Triangle J Ranch

- TJ Gold might consistently sire the most wonderful daughters of any purebred sire for look, udders and marketability.
- If you have Gold daughters in your bred heifer sale they are simply going to be at or near the top of it. So level, so deep sided and attractive with an abundance of rib and width.



Gold daughter from Triangle J Ranch



Top Seller 2022 Great Lakes Beef Connection

- He has also proven to be a slam dunk for use on heifers, with an enviable top 5% for MCE as well.



PB SIMMENTAL

	DIRECT					MATERNAL					CARCASS				S INDEX	
	CE	BW	VV	YW	ADG	MCE	MILK	MWW	STAY	DOC	CW	YG	MARB	REA	API	TI
EPD	17.3	-3.5	74.2	115.5	0.26	10.7	26.3	63.3	17.2	11.9	17.2	-0.27	0.57	0.76	173.4	94.5
ACC	0.81	0.93	0.90	0.90	0.90	0.64	0.61	0.68	0.47	0.85	0.71	0.51	0.69	0.65	-	-
RANK	3	2	65	55	40	2	25	45	35	50	90	95	10	75	4	10

HOOK'S BLACK HAWK 50B
 SIRE: HOOK'S EAGLE 6E
 HOOK'S CRYSTAL 1C

CCR SANTA FE 9349Z
 DAM: TJ 12C
 TJ MS 38W



SEMEN \$30

Contact Allied to order semen.



WS PROCLAMATION E202



	DIRECT					MATERNAL					CARCASS				S INDEX	
	CE	BW	WW	YW	ADG	MCE	MILK	MWW	STAY	DOC	CW	YG	MARB	REA	API	TI
	13.6	0.5	97.1	145.1	0.30	7.8	26.3	74.7	17.1	18.3	35.7	-0.22	0.55	0.63	168.1	102.1
EPD	0.83	0.94	0.93	0.93	0.93	0.80	0.83	0.86	0.59	0.88	0.80	0.58	0.78	0.73	-	-
KC	25	35	4	10	20	20	25	10	35	2	25	99	10	95	10	3

SEMEN \$50

Contact Allied to order semen.



TRIPLE C SINGLETARY 53H
SIRE: CCR COWBOY CUT 5048Z
CCR MS 4045 TIME 7322T

CLRS GRADE-A 875 A
DAM: WS MISS SUGAR C4
WS ANISE A71

ALLIED ORigen
GENETIC RESOURCES

Homozygous Black, Homozygous Polled || PB SM
ASA# 3254156 DOB: 2/21/2017 Tattoo: E202

Owned by:

Apex Cattle || Wilkinson Farms

- A legendary sire that is represented in top sellers in sale after sale. The common denominator is that they are either out of his daughters, or his prepotent, popular sons, Bold Ruler, Global or Genesis!
- Proclamation (now deceased) took the Simmental world by storm by consistently siring impressive performance, extra volume, good feet, and structure with the added value he has brought to the marketplace with his good-natured progeny.
- Acclaimed as Sugar's "Greatest and Most Proven" Son! Proclamation daughters are on her same path of maternal greatness!
- His sons have topped numerous auctions and are featured sire groups in sale after sale. The more cattlemen see of his prepotency, the more they want his genetics!
- His highly maternal daughters are beautiful uddered, broody, gentle, easy fleshing, fertile and extra valuable in building better cowherds.
- For good dispositions, calving ease, extra body mass, super sound structure, great feet and program-impacting multi-trait EPDs with added performance, he is the sire of choice for 2024!
- High Quality Semen, Limited Supply!



LBRS Genesis, Proclamation son



KBHR Global, Proclamation son

Homozygous Black, Homozygous Polled || PB SM
 ASA# 3796572 DOB: 2/8/2020 Tattoo: H0301

Owned by:

All Beef LLC || Altenburg Super Baldy Ranch || Lyman Livestock

- Big time, up and coming purebred option with high value progeny as the best proof you can get!
- Calves have tremendous growth, a little extra size and are very muscular. Very purebred for type with more substance and bone as well.



Daughter at Bridle Bit Simmentals



Son from Lassle Ranch Simmentals

- His EPDs continue to rise for value as well, now with every EPD that is printed, except one (BFat) in the top 40% of all purebreds and 9 in the top 10%.
- Progeny averaged 36 for PAP at 7000 feet of elevation for Lyman Livestock in Utah.

ASR AMERICAN PROUD H0301



EPD	DIRECT					MATERNAL					CARCASS				S INDEX	
	CE	BW	VV	YW	ADG	MCE	MILK	MWW	STAY	DOC	CW	YG	MARB	REA	API	TI
	12.5	-0.3	91.5	143.6	0.33	6.7	27.4	73.1	19.4	17.4	32.8	-0.42	0.51	1.15	170.7	100.1
ACC	0.59	0.70	0.64	0.64	0.64	0.31	0.24	0.34	0.34	0.60	0.49	0.37	0.46	0.44	-	-
RANK	35	25	10	10	10	40	20	10	10	4	35	40	10	10	5	4

HOOK'S BLACK HAWK 50B
 SIRE: ASR AMERICAN PATRIOT F843
 ASR MS PRIMROSE D663

CCR COWBOY CUT 5048Z
 DAM: ASR LITTLE DESI D6273
 ASR LITTLE DESSI Z213



SEMEN \$30

Contact Allied to order semen.

ORigen **ALLIED**
 GENETIC RESOURCES

WBF PATTON K059



Homozygous Black, Homozygous Polled || PB SM
 ASA# 4060597 DOB: 2/26/2022 Tattoo: K059

Owned by:
 All Beef LLC || Genex || Wildberry Farms

- When you combine his mass, substance and individual performance, Patton was an easy choice to lead of the 2023 Wildberry Farms sale and as the choice of Resource sons to sell in 2023.
- Individually, he ratioed 96 for BW, 107 WW, 106 YW, 127 for MB and 129 REA. You just can't get much more complete for performance.
- Expect solid Calving Ease with explosive growth and muscular sound structured calves.
- In person, he is a pup to be around. Quiet natured and easy-going the way they all should be.

EPD	DIRECT					MATERNAL					CARCASS				S INDEX	
	CE	BW	WW	YW	ADG	MCE	MILK	MWW	STAY	DOC	CW	YG	MARB	REA	API	TI
	14.8	-0.7	81.9	139.6	0.36	8.0	27.9	68.8	17.3	9.9	30.1	-0.35	0.55	1.09	170.5	96.6
ACC	0.45	0.50	0.51	0.49	0.49	0.23	0.17	0.27	0.31	0.39	0.40	0.32	0.39	0.38	-	-
15	20	35	15	3	20	20	25	30	75	40	70	10	15	5	10	

SEMEN \$25

Contact Allied to order semen.



HOOK'S ENCORE 65E
 SIRE: BRIDLE BIT RESOURCE G9117
 BRIDLE BIT MISS B452

CLRS DIVIDEND 405D
 DAM: WBF ULTRA G621
 WBF ULTRA E309

ALLIED
 GENETIC RESOURCES

GENEX



Sire of Patton

Homozygous Black, Homozygous Polled || PB SM
 ASA# 3943843 DOB: 3/22/2021 Tattoo: J131

Owned by:

Kellers Broken Heart Ranch || Cottonwood Cattle || Cow Camp Ranch ||
 Clear Springs Cattle

- The Gunsmoke calves of 2023 have proved that his structural integrity and hoof quality are the real deal!
- His calves scanned very well for IMF as well to solidify him as a top tier marbling bull in a PB package.
- Gunsmoke's added frame makes him desirable for today's market without sacrificing the future of your cowherd as his maternal predictions and pedigree bode very well for making quality females.



Gunsmoke son from Cottonwood Cattle



\$31,000 full sister to Gunsmoke

without sacrificing the future of your cowherd as his maternal predictions and pedigree bode very well for making quality females.

KBHR GUNSMOKE J131



	DIRECT					MATERNAL					CARCASS				S INDEX	
	CE	BW	VV	YW	ADG	MCE	MILK	MWW	STAY	DOC	CW	YG	MARB	REA	API	TI
EPD	12.0	0.1	90.9	138.8	0.30	8.4	24.6	70.0	21.3	8.7	45.2	-0.17	0.93	0.86	193.9	107.9
ACC	0.63	0.76	0.71	0.70	0.70	0.36	0.30	0.40	0.38	0.63	0.58	0.43	0.52	0.53	-	-
RANK	45	30	15	15	20	15	40	20	3	85	10	99	1	55	1	1

WS PROCLAMATION E202
 SIRE: LBRS GENESIS G69
 LBR DIANA D69

HOOK'S BEACON 56B
 DAM: KBHR E197
 BAR CK MS X38 106Z



SEMEN \$40

Contact Allied to order semen.

ORigen **ALLIED**
 GENETIC RESOURCES

KBHR KEYNOTE K229



Homozygous Black, Homozygous Polled || PB SM
 ASA# 4104347 DOB: 3/31/2022 Tattoo: K229

Owned by:
 Kellers Broken Heart Ranch || Hook Farms || Highland Acres || Clear Springs

- One of the most genetically advanced sire prospects to emerge from a prolific, breed-leading cow family and pedigree.
- Maternal masterpiece setting the standard for CE, MCE, Milk, STAY and Marbling.
- Keynote is as clean through his sheath and front 1/3 as any PB Simmental in the country and his calves are expressing his shapely muscle pattern even at a young age!
- Possesses the "Cowboy Look" for a real heifer bull sire and his ACE designation further validates his phenotype.

EPD	DIRECT					MATERNAL				CARCASS				S INDEX	
	CE	BW	WW	YW	ADG	MCE	MILK	MWW	STAY	DOC	CW	YG	MARB	REA	API
17.2	-4.1	83.5	129.3	0.29	11.1	28.8	70.4	23.4	9.8	36.3	-0.12	0.98	0.63	212.4	110.7
0.47	0.48	0.51	0.52	0.52	0.30	0.25	0.32	0.37	0.50	0.46	0.37	0.45	0.44	-	-
4	1	30	25	25	2	15	20	1	75	25	99	1	95	1	1

SEMEN \$40

Contact Allied to order semen.



HOOK'S BEACON 56B
 SIRE: CLRS GUARDIAN 317G
 CLRS ALWAYS XCELLENT

WS PROCLAMATION E202
 DAM: KBHR DEBUTANTE H113
 BAR CK MS X38 106Z



Dam of Keynote



Homozygous Black, Homozygous Polled || PB SM
 ASA# 4046516 DOB: 3/11/2022 Tattoo: 611K

Owned by:
 All Beef LLC || Select Sires || Traunicht Simmentals

LRS DUTTON 611K

PB SIMMENTAL



- A little different Purebred option out of the clear #1 donor from the Lassle program.
- Deep and stout, this guy led off the 2023 LRS sale in easy fashion as the feature bull from the feature flush.
- The ASR American Proud progeny are making waves this spring, offering extra grow and substance and very nice evaluations for PAP at altitude.
- Expect massive bodied, sound structured progeny with extra growth, docility and muscle.



LRS Ms Eagle 983G, Dam of Dutton

	DIRECT					MATERNAL					CARCASS				S INDEX	
	CE	BW	WW	YW	ADG	MCE	MILK	MWW	STAY	DOC	CW	YG	MARB	REA	API	TI
EPD	10.9	0.1	92.3	147.1	0.34	4.9	27.4	73.4	20.5	15.7	54.1	-0.41	0.47	1.37	169.0	99.1
ACC	0.42	0.46	0.48	0.49	0.49	0.23	0.17	0.25	0.33	0.47	0.42	0.33	0.38	0.39	-	-
RANK	60	30	10	10	10	70	20	10	5	10	2	45	15	1	10	4

ASR AMERICAN PATRIOT F843
 SIRE: ASR AMERICAN PROUD H0301
 ASR LITTLE DESI D6273



SEMEN \$30

Contact Allied to order semen.

HOOK'S EAGLE 6E
 DAM: LRS MS EAGLE 983G
 LRS MS CLASS ACT 437B



JC MR TOTAL POWER F113K



Homozygous Black, Homozygous Polled || PB SM
 ASA# 4029550 DOB: 2/24/2022 Tattoo: JCF113K

Owned by:
 Salinas || JC Simmental

- Power bull as his name implies, but with loads of maternal and carcass value as well.
- Thick ended and good looking, he offers stoutness and bulk with wonderful structure and kind.
- You just can't make a female any better than his dam, Fantasia 94F. She is an absolute model cow regardless of breed.
- 8 EPD traits in the top 5% or better and 6 more in the top 25%.



Dam of 113K



Sire of 113K

EPD	DIRECT					MATERNAL				CARCASS				S INDEX		
	CE	BW	WW	YW	ADG	MCE	MILK	MWW	STAY	DOC	CW	YG	MARB	REA	API	TI
	16.3	-2.4	82.3	136.8	0.34	10.9	34.4	75.5	18.7	14.3	37.0	-0.38	0.58	1.25	179.4	100.2
BW/KC	0.44	0.49	0.50	0.51	0.51	0.27	0.18	0.27	0.35	0.49	0.45	0.36	0.42	0.43	-	-
	10	4	35	15	10	2	1	5	15	20	20	55	5	3	3	4

SEMEN \$30

Contact Allied to order semen.



GIBBS 7382E BROAD RANGE
 SIRE: GIBBS 9114G ESSENTIAL
 GIBBS 7153E STAR 3136A

HOOK'S BEACON 56B
 DAM: HOOK'S FANTASIA 94F
 HOOK'S CELEBRITY 19C



Homozygous Black, Homozygous Polled || PB SM
 ASA# 3762999 DOB: 1/24/2020 Tattoo: 485H

Owned by:

Triangle J Ranch || Shannon Welsch || Terra Sol Beef || Schupback Farms LLC

- 50K calves are attractive, stout, sound structured and are commanding top prices because of their quality.
- Definitely a power bull for growth, thickness and bone he also promises maternal value at the highest levels.
- TJ Teardrop daughters are proving to be physically beautiful with



Sire of 50K



Full Sister to 50K

- tremendous udder quality and fleshing ability.
- For those looking to add milk to lower producing bloodlines, 50K also should do that to a high degree with a high producing pedigree for generations.

TJ 50K 485H



PB SIMMENTAL

	DIRECT					MATERNAL					CARCASS				S INDEX	
	CE	BW	VV	YW	ADG	MCE	MILK	MWW	STAY	DOC	CW	YG	MARB	REA	API	TI
EPD	10.9	1.5	81.8	120.0	0.24	4.8	33.1	73.9	22.8	14.2	29.1	-0.17	0.27	0.52	152.1	84.6
ACC	0.72	0.84	0.81	0.80	0.80	0.39	0.22	0.35	0.40	0.74	0.55	0.44	0.54	0.56	-	-
RANK	60	55	35	45	55	70	2	10	1	25	45	99	35	99	20	35

TJ MAIN EVENT 503B
 SIRE: TJ TEARDROP 783F
 TJ MS 38W

CCR COWBOY CUT 5048Z
 DAM: TJ 92C
 TJ 43Z



SEMEN \$30

Contact Allied to order semen.

ORigen **ALLIED**
 GENETIC RESOURCES

LBRS DAKOTA PRIDE J68

Homozygous Black, Homozygous Polled || PB SM
 ASA# 3938651 DOB: 1/23/2021 Tattoo: J68

Owned by:
 Double T Simmental || Little Bitterroot Ranch Simmental



- Not just different, different and really good!
- First calves are simply tremendous and the standout sire group at Double T this year.
- Wonderfully balanced genetic evaluation with big spread from Birth to Weaning and Yearling and top 1% STAY.
- Calves have a little extra size and length with really good structure and feet. Nice balance and look as well.

EPD	DIRECT					MATERNAL					CARCASS				S INDEX	
	CE	BW	WW	YW	ADG	MCE	MILK	MWW	STAY	DOC	CW	YG	MARB	REA	API	TI
	14.9	0.2	90.3	145.7	0.35	7.9	20.0	65.1	23.1	7.8	41.8	-0.33	0.30	1.06	168.8	93.0
	0.55	0.63	0.59	0.58	0.58	0.29	0.23	0.33	0.35	0.40	0.44	0.34	0.42	0.41	-	-
	15	30	15	10	4	20	75	35	1	90	15	80	30	15	10	15

SEMEN \$30

Contact Allied to order semen.



HOOK'S BLACK HAWK 50B
 SIRE: KRJ HZN DIRECT IMPACT F805
 OMF/DK DARLING D49

LBR GOLD RUSH B853
 DAM: LBR DAISY D68
 LBR SOMETHING SPECIAL Y4



Sire of Dakota Pride



Homozygous Black, Homozygous Polled || PB SM
 ASA# 3918028 DOB: 2/26/2021 Tattoo: 30J

Owned by:

All Beef LLC || Running Springs Cattle Company || Highland Acres

- Justice is a truly unique Galileo son with added punch and a tremendous EPD profile including 10 traits in the top 5% of the breed or better.
- Sound structured and complete, he also has excelled in service on fescue since moving to Tennessee after his purchase.



Justice son from Bred for Balance



Justice son at Great Lakes Beef Connection

- Expect his daughters to wean huge calves with his combination of growth and milk.
- With marbling at a lofty +1 and REA in the top 15%, his carcass value is among the very best as well.



	DIRECT					MATERNAL					CARCASS				S INDEX	
	CE	BW	VW	YW	ADG	MCE	MILK	MWW	STAY	DOC	CW	YG	MARB	REA	API	TI
EPD	12.0	1.3	95.7	152.0	0.35	6.7	33.7	81.4	19.1	18.8	49.1	-0.27	1.01	1.07	195.8	113.4
ACC	0.66	0.81	0.74	0.72	0.72	0.36	0.22	0.34	0.38	0.62	0.56	0.42	0.53	0.51	-	-
RANK	45	50	5	4	4	40	2	1	15	2	5	95	1	15	1	1

BRIDLE BIT ECLIPSE E744
 SIRE: HOOK'S GALILEO 210G
 HOOK'S EVITA 18E

HOOKS SHEAR FORCE 38K
 DAM: HOOK'S DACIA 14D
 HOOKS ARIANA 58A



HA JUSTICE 30J

SEMEN \$30

Contact Allied to order semen.

ORigen **ALLIED**
 GENETIC RESOURCES

HOOK'S FOREFRONT 16J



Homozygous Black, Homozygous Polled || PB SM
 ASA# 3866470 DOB: 2/19/2021 Tattoo: 16J

Owned by:
 Hook Farms || Hall Stock Farm || Highland Acres Farm

- Solid Black (no white on underline), Purebred standout combining a multitude of high-value phenotypic and genotypic traits.
- Forefront stems from the most prolific Bred for Balance cow family for generations of top-flight seedstock and stud bulls.
- Maternal value, Stayability, udder quality and hoof integrity come as standard equipment with this pedigree and genetic line.
- One of the most fault-free sire prospects with high genetic merit to emerge from the 2022 spring sale season.



Hook's Galileo 210G, Maternal Sib to Forefront



Dam of Forefront

EPD	DIRECT					MATERNAL					CARCASS				S INDEX	
	CE	BW	WW	YW	ADG	MCE	MILK	MWW	STAY	DOC	CW	YG	MARB	REA	API	TI
	12.6	1.6	85.3	134.8	0.31	8.9	36.2	78.8	19.2	9.9	27.0	-0.43	0.67	1.01	173.8	99.1
	0.55	0.63	0.61	0.61	0.61	0.35	0.28	0.37	0.39	0.57	0.51	0.40	0.50	0.48	-	-
	35	60	25	20	15	10	1	2	15	75	55	35	3	25	4	4

SEMEN \$30

Contact Allied to order semen.



CDI MAINLINE 265D
 SIRE: HOOK'S FRONTLINE 40F
 HOOK'S CARINA 15C

HOOK'S BEACON 56B
 DAM: HOOK'S EVITA 18E
 HOOK'S YUMA 49Y



Homozygous Black, Homozygous Polled || PB SM
 ASA# 3563006 DOB: 3/11/2019 Tattoo: 442G

Owned by:
Hansen Simmental Ranch || Dakota Xpress

- Designed to be a model for producing great females, Falcon is proving to be all of that and more!
- Falcon's Dam LRS Class Act 437B had a storied career at Lassle Ranch, raising Falcon, countless other herdsires, and his full sister LRS Ms Eagle 983G



High selling Falcon son at Dakota Xpress



High selling son of Falcon from Quandt Brothers

- Falcon's performance proof is just as impressive with top 2% for YW EPD and top 1% for ADG.
- Expect fast growing calves that have tremendous depth, thickness and density.
- His full sister LRS Ms Eagle 983G has a wonderful track record of producing sale toppers and herd sires at Lassle Ranch Simmentals!



PB SIMMENTAL

	DIRECT					MATERNAL					CARCASS				S INDEX	
	CE	BW	WW	YW	ADG	MCE	MILK	MWW	STAY	DOC	CW	YG	MARB	REA	API	TI
EPD	14.8	-2.6	88.4	150.7	0.39	5.9	25.9	70.0	22.6	16.7	47.2	-0.43	0.31	1.37	174.6	97.1
ACC	0.70	0.84	0.81	0.80	0.80	0.43	0.33	0.43	0.41	0.68	0.65	0.51	0.64	0.63	-	-
RANK	15	4	20	4	1	50	30	20	2	10	10	35	30	1	4	10

HOOK'S BLACK HAWK 50B
 SIRE: HOOK'S EAGLE 6E
 HOOK'S CRYSTAL 1C

LRS CLASS ACT 606Z
 DAM: LRS MS CLASS ACT 437B
 LRS MS OLIE 078X



SEMEN \$35

Contact Allied to order semen.

ORigen **ALLIED**
 GENETIC RESOURCES

HOOK'S FRONTLINE 40F



Homozygous Black, Homozygous Polled || PB SM
 ASA# 3403352 DOB: 2/4/2018 Tattoo: 40F

Owned by:
 All Beef LLC || ABS Global || J/C Simmental || Hook Farms

- Frontline is another of the list of truly great and proven maternal bulls in this year's lineup.
- One of the most prepotent foot improvers in the beef industry, expect broody, good uddered and wonderfully sound daughters in volume,
- 9 traits in the top 10% of the evaluation and 5 more in the top 30%, with high levels of proof!
- You will keep every daughter. He sires the kind of low cost, easy to manage females this industry needs more of.



Frontline son at Barker Cattle Company



Daughter from Advanced Beef Genetics Dispersal

EPD	DIRECT					MATERNAL					CARCASS				S INDEX	
	CE	BW	WW	YW	ADG	MCE	MILK	MWW	STAY	DOC	CW	YG	MARB	REA	API	TI
12.6	-0.7	69.3	110.6	0.26	8.1	35.8	70.3	21.9	14.2	21.8	-0.33	0.69	0.85	177.3	92.1	
0.72	0.89	0.86	0.86	0.86	0.62	0.64	0.71	0.50	0.78	0.72	0.54	0.69	0.67	-	-	
35	20	85	65	40	20	1	20	2	25	75	80	2	55	3	15	

SEMEN \$30

Contact Allied to order semen.



TJ MAIN EVENT 503B
 SIRE: CDI MAINLINE 265D
 HOOK'S BEYONCE 82B

HOOKS SHEAR FORCE 38K
 DAM: HOOK'S CARINA 15C
 HOOK'S YEARN 39Y



Homozygous Black, Homozygous Polled || PB SM
 ASA# 3312276 DOB: 4/10/2017 Tattoo: E283

KBHR HIGH ROAD E283

Owned by:
 All Beef LLC || J/C Simmentals || Gibbs Farms || Keller Broken Heart

- High Road has had a solid presence among the most highly used sires in the breed since 2019 because he is so consistent in the traits he sires.
- High Road will add frame and growth without unnecessary birth weight, he improves feet and docility, and commercial customers love to buy his sons.



Son of High Road at GLBC

- 13 traits in the top 15% of the breed and he sires clean patterned, attractive, and sound structured progeny.
- Tremendous carcass value as well.



High Road son at Cow Camp Ranch



	DIRECT					MATERNAL					CARCASS				S INDEX	
	CE	BW	VW	YW	ADG	MCE	MILK	MWW	STAY	DOC	CW	YG	MARB	REA	API	TI
EPD	15.9	-1.3	92.6	144.7	0.33	8.8	25.6	71.8	15.5	16.3	43.3	-0.39	0.52	1.26	169.8	102.2
ACC	0.83	0.94	0.92	0.92	0.92	0.73	0.74	0.79	0.58	0.87	0.77	0.57	0.75	0.71	-	-
RANK	10	15	10	10	10	15	30	15	55	10	10	55	10	3	10	3

HOOKS SHEAR FORCE 38K
 SIRE: HOOK'S BEACON 56B
 HOOKS ZAFIRAH 41Z

CLRS GRADE-A 875 A
 DAM: WS MISS SUGAR C4
 WS ANISE A71



SEMEN \$30

Contact Allied to order semen.



HOOK'S FREEDOM 45F



Homozygous Black, Homozygous Polled || PB SM
 ASA# 3403357 DOB: 2/7/2018 Tattoo: 45F

Owned by:
 All Beef LLC || Fred Smith Company Ranch || Top Genomics LLC || Hook Farms

- The more progeny proof that arrives, the more Freedom shows his true colors as a powerhouse genetic option for the future.
- Genomically he is a rock star and a full brother to the great Hook's Evita 18A, the dam of Hook's Galileo.
- His current evaluation ranks him in the top 20% of the breed for 12 crucial profit enhancing traits.
- Physically he is a big brute of a bull. He was significantly injured early in life, but has never failed to answer the bell and breed a big set of cows.



FSCR K048 Freelance, Freedom son at Fred Smith Company Ranch



FSCR K066 Free Power, Freedom son at Fred Smith Company Ranch

	DIRECT					MATERNAL					CARCASS				S INDEX	
	CE	BW	WW	YW	ADG	MCE	MILK	MWW	STAY	DOC	CW	YG	MARB	REA	API	TI
	13.7	-0.3	92.5	155.4	0.39	8.8	29.6	75.8	19.1	13.3	43.2	-0.29	0.55	1.12	176.0	102.3
RMV, KC	0.66	0.81	0.77	0.77	0.77	0.44	0.35	0.46	0.46	0.63	0.64	0.49	0.62	0.60	-	-
EPD	25	25	10	3	1	15	10	5	15	30	10	90	10	10	3	2

SEMEN \$25

Contact Allied to order semen.



HOOKS SHEAR FORCE 38K
 SIRE: HOOK'S BEACON 56B
 HOOKS ZAFIRAH 41Z

HOOKS TITUS 31T
 DAM: HOOK'S YUMA 49Y
 HOOK'S UNIVERSAL 17U



Homozygous Black, Homozygous Polled || PB SM
 ASA# 3459048 DOB: 1/10/2018 Tattoo: 388F

Owned by:
 Cow Camp Ranch || All Beef LLC || Triangle J Ranch

- Heisman is finding new popularity as the reputation of his daughters and the desire for more grow takes hold.
- Big and powerful, his 6.5 frame genetic package with stunning phenotype and structure are truly good reasons to consider him again.
- Daughters are ultimately attractive, have near perfect udders,



Herd Sire, Finke Cattle, Berthold, ND



Sweetness, Junior herdsire at Beach Cattle

- excellent feet and look as if they are really going to last!
- Time to give this highly proven growth and maternal bull a try.

TJ HEISMAN 388F



	DIRECT					MATERNAL					CARCASS				S INDEX	
	CE	BW	WW	YW	ADG	MCE	MILK	MWW	STAY	DOC	CW	YG	MARB	REA	API	TI
EPD	9.3	1.3	85.5	135.0	0.31	7.7	23.5	66.2	20.8	11.0	23.8	-0.13	0.62	0.24	168.7	95.0
ACC	0.73	0.87	0.84	0.83	0.83	0.59	0.65	0.70	0.49	0.76	0.72	0.55	0.71	0.70	-	-
RANK	80	50	25	20	15	25	50	35	4	60	65	99	4	99	10	10

HOOK'S YELLOWSTONE 97Y
 SIRE: KOCH BIG TIMBER 685D
 KOCH MS HOOKS BOY

CCR COWBOY CUT 5048Z
 DAM: TJ 67D
 TJ MISS 385



SEMEN \$25

Contact Allied to order semen.

ORigen **ALLIED**
 GENETIC RESOURCES

MF/BMF HILLJACK H13F

Homozygous Black, Homozygous Polled || PB SM
 ASA# 3748736 DOB: 1/2/2020 Tattoo: H13F

Owned by:
Martin Farms



- Hilljack is a member of an elite group of sires whose data ranks in the top 30% of the breed for 17 of the 18 economically important traits measured by ASA in terms of EPDs and \$values, with 8 of those traits ranking inside the top 5% of the breed.
- Hilljack is structurally sound, athletic on the move, and correct in his joint angles with sound feet.
- Hilljack is extremely quiet-natured and easy to handle, and he passes that attitude on to his progeny.
- Based on his stellar maternal predictions, Hilljack's true value may be his daughters. His dam is a modest-framed, black baldy cow whose production record boasts maternal ratios of 92(4) for birth; 113(4) for weaning; and 105(3) for yearling. Her first daughter was a feature lot and a \$6,000 sale highlight on the 2022 Seedstock Connection Sale.
- Hilljack is slick-haired and bred to perform, and his first calves are proving his numbers to be legit. Progeny come easily and take off quickly.
- With his first daughters entering production in 2024 and sons being well accepted by bull buyers, Hilljack is proving to be a sire for early growth before weaning, overall trait balance, and improved dispositions without sacrifices in other traits. He is a legitimate herd bull relevant to today's beef industry.

EPD	DIRECT					MATERNAL					CARCASS				S INDEX	
	CE	BW	WW	YW	ADG	MCE	MILK	MWW	STAY	DOC	CW	YG	MARB	REA	API	TI
	18.4	-2.1	87.2	131.9	0.28	12.6	33.1	76.6	22.7	16.6	44.1	-0.46	0.46	1.44	183.0	99.4
BW/KC	0.55	0.61	0.53	0.54	0.54	0.34	0.27	0.35	0.42	0.53	0.48	0.39	0.44	0.47	-	-
	2	10	20	20	30	1	2	4	1	10	10	20	15	1	2	4

SEMEN \$30

Contact Allied to order semen.



HOOKS SHEAR FORCE 38K
 SIRE: HOOK'S BEACON 56B
 HOOKS ZAFIRAH 41Z

HOOK'S BOUNTY 6B
 DAM: MF FLOWER
 MF ZOEY



Homozygous Black, Homozygous Polled || PB SM
 ASA# 3935623 DOB: 3/3/2021 Tattoo: D014J

Owned by:
 Beach Cattle Co || Iron Creek Cattle

IRON CREEK ANTHEM 14J

PB SIMMENTAL

- Anthem was one of the most inquired about bulls in the 2022 catalog.
- Now there is ample semen available and he is ready for wide use.
- Anthem currently has 9 traits ranked in the top 5 percent of the breed and nothing above average except back fat EPD, which is probably a really good thing.



Dam of Anthem

- His donor dam has one of the most impressive EPD arrays of any in the breed and is a full sister to KBHR Cimmaron.
- Expect him to dominate carcass improvement genetic improvement as well.



Sire of Anthem



EPD	DIRECT					MATERNAL					CARCASS				S INDEX	
	CE	BW	WW	YW	ADG	MCE	MILK	MWW	STAY	DOC	CW	YG	MARB	REA	API	TI
	11.1	0.3	96.1	151.6	0.35	6.0	24.5	72.5	18.2	16.2	57.1	-0.40	0.73	1.49	179.9	107.3
RAWK ACC	0.54	0.60	0.50	0.50	0.50	0.33	0.25	0.32	0.40	0.46	0.46	0.38	0.44	0.46	-	-
	55	35	5	4	4	50	40	10	20	10	2	50	2	1	2	1

HOOK'S BLACK HAWK 50B
 SIRE: HOOK'S EAGLE 6E
 HOOK'S CRYSTAL 1C

HOOK'S BEACON 56B
 DAM: KBHR MATRON OF HONOR F202
 BAR CK MS X38 106Z



SEMEN \$30

Contact Allied to order semen.

ORigen **ALLIED**
 GENETIC RESOURCES

BRIDLE BIT GPS H078



Homozygous Black, Homozygous Polled || PB SM
 ASA# 3724830 DOB: 2/16/2020 Tattoo: H078

Owned by:
 All Beef LLC || Eichacker Simmental || Genex

- GPS offers a slam dunk heifer safe proof in an outcross genetic package.
- Physically GPS has grown into a powerhouse for body, balance and structural correctness.
- Great spread bull option with 9 EPD traits in the top 20% of all purebreds.
- Another one of the foot improving sires in this year's directory and his dam has a near perfect udder!



Son of GPS



GPS daughter

EPD	DIRECT					MATERNAL				CARCASS				S INDEX		
	CE	BW	WW	YW	ADG	MCE	MILK	MWW	STAY	DOC	CW	YG	MARB	REA	API	TI
	15.2	-1.6	95.3	139.8	0.28	8.3	16.7	64.3	18.2	1.9	49.6	-0.13	0.31	0.65	161.4	96.2
RMSE	0.69	0.80	0.75	0.76	0.76	0.38	0.27	0.38	0.41	0.64	0.57	0.42	0.56	0.50	-	-
KC	10	10	10	15	30	15	95	40	20	99	4	99	30	95	15	10

SEMEN \$25

Contact Allied to order semen.



SIRE: HOOK'S YELLOWSTONE 97Y
 KOCH BIG TIMBER 685D
 KOCH MS HOOKS BOY

DAM: CLRS DIVIDEND 405D
 BRIDLE BIT MISS F840
 BRIDLE BIT MISS B440



Homozygous Black, Homozygous Polled || PB SM
 ASA# 4029480 DOB: 2/9/2022 Tattoo: JC758K

Owned by:
 All Beef || Salinas Farms || JC Simmentals

JC QUIET MAN 758K

PB SIMMENTAL

- Out of one of the great young donors in the breed, Quiet Man is working great on heifers, which is exactly what he was bred to do.
- The cow family is absolutely bullet-proof behind this guy. Cowgirl already has WW and YW ratios on her natural calves at 107 and 112. Below her is TJ 8T and MS Miss 306R. Legends!



Maternal grandam

- 8 EPD categories in the top 5% or better including CE, BW, MCR, STAY, Milk, MB, \$API and \$TI.
- Extremely quiet to be around, Quiet Man was brought in as a more reasonable disposition option to his famous sire.



Sire of 758K



	DIRECT					MATERNAL					CARCASS				S INDEX	
	CE	BW	WW	YW	ADG	MCE	MILK	MWW	STAY	DOC	CW	YG	MARB	REA	API	TI
EPD	16.7	-3.2	79.3	112.8	0.21	10.6	33.3	72.9	21.7	8.5	34.4	-0.17	0.61	0.71	183.2	97.9
ACC	0.45	0.48	0.51	0.51	0.51	0.30	0.24	0.32	0.38	0.46	0.45	0.36	0.42	0.42	-	-
RANK	5	2	45	60	80	3	2	10	2	85	30	99	4	85	2	5

HOOK'S BEACON 56B
 SIRE: CLRS GUARDIAN 317G
 CLRS ALWAYS XCELLENT

CCR COWBOY CUT 5048Z
 DAM: J-J MS 8T COWGIRL 917G
 TJ 8T



SEMEN \$30

Contact Allied to order semen.

ORigen **ALLIED**
 GENETIC RESOURCES

CLRS JOHNNY WALKER 1049J



Homozygous Black, HOMOZYGOUS POLLED || PB SM
 ASA# 3874317 DOB: 2/11/2021 Tattoo: CLRS1049J

Owned by:
 All Beef LLC || Gerloff Farms || McDonald Farms || Clear Springs

- This balanced performance son of the great Yuma female made a lot of satisfied customers with his first crop born in 2023.
- Hook's Yuma 49Y has been a great producer prior to her entrance into the donor pen last year. She is already the dam of Hook's Evita 18E, Hook's Bounty 6B, Hook's Freedom and the grand dam of Hook's Fantasia 94F.
- His EPDs currently rank him in the top 20% or better for 13 traits, including exceptional values in the maternal complex.
- Wonderfully, sound structured and complete, he is a definite foot improver.



Johnny Walker son at T Heart Ranch



Maternal sister to Johnny Walker

EPD	DIRECT					MATERNAL					CARCASS				S INDEX	
	CE	BW	WW	YW	ADG	MCE	MILK	MWW	STAY	DOC	CW	YG	MARB	REA	API	TI
	12.3	1.0	96.6	145.0	0.30	7.4	32.0	80.2	22.4	11.2	44.0	-0.32	0.46	1.00	172.0	100.0
RMK	0.61	0.73	0.70	0.69	0.69	0.34	0.27	0.38	0.40	0.52	0.51	0.40	0.49	0.49	-	-
KC	40	45	5	10	20	30	3	2	2	60	10	80	15	25	5	4

SEMEN \$30

Contact Allied to order semen.



SIRE: HOOK'S BEACON 56B
 CLRS GUARDIAN 317G
 CLRS ALWAYS XCELLENT

DAM: HOOKS TITUS 31T
 HOOK'S YUMA 49Y
 HOOK'S UNIVERSAL 17U



Homozygous Black, Homozygous Polled || PB SM
 ASA# 3253795 DOB: 2/15/2017 Tattoo: 65E

Owned by:
All Beef LLC || Encore Cattle and Genetics || Hook Farms

- If you have daughters of Encore around, you are apt to use him again.
- Great fertility, disposition, and longevity in these cattle with wonderful feet and structure.
- Encore is still breeding cows 2 seasons a year in KS and MO and shows no sign of slowing down.



Donor female for JC Simmental in Michigan



Encore son at Cow Camp Ranch

- Bull progeny are heavy muscled, sound and correct and are big REA and Marbling improvers.

HOOK'S ENCORE 65E



	DIRECT					MATERNAL					CARCASS				S INDEX	
	CE	BW	VW	YW	ADG	MCE	MILK	MWW	STAY	DOC	CW	YG	MARB	REA	API	TI
EPD	12.8	-0.3	75.5	117.0	0.26	6.4	25.2	62.8	16.5	17.3	24.0	-0.54	0.53	1.36	160.3	91.1
ACC	0.78	0.89	0.87	0.87	0.87	0.65	0.71	0.76	0.59	0.81	0.76	0.57	0.74	0.72	-	-
RANK	35	25	60	50	40	45	35	50	40	4	65	3	10	1	15	20

HOOKS SHEAR FORCE 38K
 SIRE: HOOK'S BEACON 56B
 HOOKS ZAFIRAH 41Z

MR NLC ENTREPRENEUR 1227
 DAM: HOOK'S CHATTER 63C
 HOOK'S XCEPTION 51X



SEMEN \$25

Contact Allied to order semen.

ORigen **ALLIED**
 GENETIC RESOURCES

HOOK'S BEACON 56B



Homozygous Black, Homozygous Polled || PB SM
 ASA# 2854180 DOB: 2/17/2014 Tattoo: 56B

Owned by:

Koch Cattle || Gateway Simmental || Diamond Peak Cattle || Huntley Bros. || Hook Farms

- With more than 6,200 recorded progeny in the database, Beacon has cemented himself as one of the breed's major influencers!
- Consistent purebred calving ease at a level few other sires can match in any breed.
- Daughters are proving to be as expected with great longevity, feet and udders.
- Beacon has aged wonderfully and looks even better today than the day he sold.
- With so many great sons, we are now able to sell Beacon semen at a substantially reduced price especially for larger volumes and projects. Please give us a call for details.



Hook's Encore, son of Beacon



KBHR Honor, son of Beacon

EPD	DIRECT					MATERNAL					CARCASS				S INDEX	
	CE	BW	WW	YW	ADG	MCE	MILK	MWW	STAY	DOC	CW	YG	MARB	REA	API	TI
16.8	-3.0	79.2	121.1	0.26	11.6	29.6	69.1	20.5	9.5	42.8	-0.42	0.73	1.62	189.8	101.8	
0.90	0.95	0.95	0.94	0.94	0.87	0.89	0.92	0.82	0.92	0.84	0.62	0.82	0.82	-	-	
4	3	45	40	40	1	10	20	5	75	10	40	2	1	1	3	

SEMEN \$20

Contact Allied to order semen.



NICHOLS LEGACY G151

SIRE: HOOKS SHEAR FORCE 38K
 C&D TRACY

GW PREDESTINED 701T

DAM: HOOKS ZAFIRAH 41Z
 HOOK'S UNO 54U



Homozygous Black, Homozygous Polled || PB SM
 ASA# 3499731 DOB: 3/22/2018 Tattoo: F151

Owned by:

All Beef LLC || Bridle Bit Simmental || Keller Broken Heart Ranch || Klein Ranch

- Elite calving ease genetics and fabulous, low maintenance daughters.
- Top 1% for Maternal Calving Eases, top 2% CE, top 4% STAY with top 2% Marbling equals powerhouse \$API and balanced, profit improvement.

- 106Z is a queen mother of great females, including Medora, Astoria and Debutante.

- Use Cimarron to promote low labor, low input and profitable beef production.



Cimarron daughter at Bred for Balance 2022



Son at Bridle Bit Simmentals

KBHR CIMARRON F151



	DIRECT					MATERNAL					CARCASS				S INDEX	
	CE	BW	VV	YW	ADG	MCE	MILK	MWW	STAY	DOC	CW	YG	MARB	REA	API	TI
EPD	15.8	-3.6	61.2	95.9	0.22	12.6	22.5	53.1	20.8	10.4	30.0	-0.30	0.75	0.92	183.8	91.0
ACC	0.74	0.84	0.82	0.81	0.81	0.50	0.43	0.54	0.45	0.72	0.69	0.52	0.67	0.64	-	-
Rank	10	2	99	90	70	1	55	90	4	70	45	85	2	40	2	20

HOOKS SHEAR FORCE 38K
 SIRE: HOOK'S BEACON 56B
 HOOKS ZAFIRAH 41Z

WS HOT BEEF X38
 DAM: BAR CK MS X38 106Z
 BAR CK MS MEAT MKR 323T



SEMEN \$25

Contact Allied to order semen.

ORigen **ALLIED**
 GENETIC RESOURCES

RFS TRAVELER L23



EPD	DIRECT					MATERNAL					CARCASS				S INDEX	
	CE	BW	WW	YW	ADG	MCE	MILK	MWW	STAY	DOC	CW	YG	MARB	REA	API	TI
	19.1	-2.3	88.2	148.7	0.38	12.5	26.1	70.1	22.9	19.8	29.4	-0.31	0.94	0.99	213.6	112.0
RMK	0.45	0.49	0.52	0.52	0.52	0.27	0.17	0.27	0.34	0.47	0.45	0.36	0.41	0.42	-	-
KC	1	5	20	5	2	1	30	20	1	1	45	85	1	25	1	1

SEMEN \$40

Contact Allied to order semen.



GIBBS 7382E BROAD RANGE
SIRE: GIBBS 9114G ESSENTIAL
GIBBS 7153E STAR 3136A

KBHR HIGH ROAD E283
DAM: KBHR MEDORA G132
BAR CK MS X38 106Z

ALLIED
GENETIC RESOURCES

GENEX

Homozygous Black, Homozygous Polled || PB SM
ASA# 4220269 DOB: 2/25/2023 Tattoo: L23

Owned by:
All Beef LLC || JC Simmental || Cow Camp || Genex || Rydeen Farms

- Breed changer and \$95,000 top seller at the Rydeen Farms sale, Traveler is poised to promote the kind of genetic progress of his historical namesake.
- The number 1 \$API bull in the 2023 calf crop and out of two of the breeds best for far reaching, future focused genetics.
- Currently the #3 overall bull for \$API and unlike the rest of the highest-ranking API bulls, he is also top 5% for YW EPD and top 2% for ADG EPD.
- Physically, you can't make one sounder footed, looser structured or more structurally correct.



Sister to Traveler



Dam of Traveler

Homozygous Black, Homozygous Polled || PB SM
 ASA# 4220296 DOB: 2/28/2023 Tattoo: L49

Owned by:
Black Summit Cattle || Rydeen Farms

- Credentials is a member of the storied and high selling flush by Gibbs Essential and Medora at Rydeen Farms
- His name fits him perfectly, he has unequalled top tier genetic value.
- Structural quality and stoutness in a more moderate package than most Essential sons



Dam of Credentials



Sire of Credentials

- Great phenotype and the “credentials” to lead your program into the future!

RFS CREDENTIALS L49



	DIRECT					MATERNAL					CARCASS				S INDEX	
	CE	BW	VV	YW	ADG	MCE	MILK	MWW	STAY	DOC	CW	YG	MARB	REA	API	TI
EPD	16.6	-1.5	89.3	153.1	0.40	11.0	26.1	70.7	19.9	17.8	46.9	-0.29	0.71	1.18	191.7	106.1
RANK ACC	0.45	0.49	0.52	0.52	0.52	0.26	0.17	0.27	0.33	0.47	0.44	0.35	0.42	0.41	-	-
	5	10	15	3	1	2	30	15	10	3	10	90	2	10	1	1

GIBBS 7382E BROAD RANGE
 SIRE: GIBBS 9114G ESSENTIAL
 DAM: GIBBS 7153E STAR 3136A

KBHR HIGH ROAD E283
 DAM: KBHR MEDORA G132
 BAR CK MS X38 106Z



SEMEN \$30

Contact Allied to order semen.

ORigen **ALLIED**
 GENETIC RESOURCES

GIBBS SIGNATURE 2510K



Homozygous Black, Homozygous Polled || PB SM
 ASA# 4120968 DOB: 9/16/2022 Tattoo: 2510K

Owned by:
 All Beef LLC || Beach Cattle || Gibbs Farms || Triangle J Ranch

- Featured top seller from the 2023 Gibbs Farms fall sale and physically a standout son of the Great Gibbs Essential.
- The very definition of balanced trait improvement, with 14 traits ranking in the top 15% of the breed 7 in the top 5%.
- Southern born and southern bred, he is slick haired in the summer and still grew a little for his winter in South Dakota.
- More attractive phenotypically than his sire out of the current number one donor at Gibbs Farms.



Dam of Signature



Sire of Signature

BMSB, K&C, EPD	DIRECT					MATERNAL					CARCASS				S INDEX	
	CE	BW	WW	YW	ADG	MCE	MILK	MWW	STAY	DOC	CW	YG	MARB	REA	API	TI
	15.6	-0.1	93.1	163.8	0.44	10.2	31.6	78.1	20.0	16.4	54.9	-0.18	0.48	1.07	177.2	101.1
	0.43	0.48	0.50	0.51	0.51	0.27	0.18	0.28	0.34	0.48	0.45	0.35	0.41	0.42	-	-
	10	25	10	1	1	4	4	3	10	10	2	99	10	15	3	3

SEMEN \$30

Contact Allied to order semen.



GIBBS 7382E BROAD RANGE
 SIRE: GIBBS 9114G ESSENTIAL
 GIBBS 7153E STAR 3136A

GIBBS 2654Z BULLET PROOF
 DAM: GIBBS 7077E LOUISE Y534
 SSF BLK LOUISE Y534

ALLIED ORigen
 GENETIC RESOURCES

Homozygous Black, Homozygous Polled || PB SM
 ASA# 4120425 DOB: 9/12/2022 Tattoo: 2411K

GIBBS CULMINATION

PB SIMMENTAL

Owned by:

Gibbs Farms || Terra Sol Beef || Ludwig Simmentals || Roger Eakins

- The next generation Genesis son that is an improver for hair and maternal traits. He is backed by two of the most powerful and dominant cow families in the Simmental breed.
- A bull that was an absolute standout out in terms of phenotype in the Gibbs Farms Fall annual sale and was admired for his bold rib shape,



Sire of Culmination



Dam of Culmination

- excellent foot quality, and a super attractive package.
- Culmination has seen heavy use this fall in several herds, and he appears to be the solution for high growth cattle that can perform on fescue as well as giving you beautiful daughters to retain.
- A true genetic super star that ranks top 1% for 8 different traits in the breed.



	DIRECT					MATERNAL					CARCASS				S INDEX	
	CE	BW	VW	YW	ADG	MCE	MILK	MWW	STAY	DOC	CW	YG	MARB	REA	API	TI
EPD	9.6	2.3	108.1	176.4	0.43	6.0	30.2	84.2	17.5	13.7	64.7	-0.12	0.91	0.93	187.2	116.0
ACC	0.45	0.50	0.52	0.50	0.50	0.27	0.22	0.31	0.33	0.46	0.44	0.35	0.40	0.41	-	-
RANK	75	75	1	1	1	50	10	1	30	25	1	99	1	40	1	1

WS PROCLAMATION E202
 SIRE: LBRS GENESIS G69
 LBR DIANA D69

GIBBS 3133A MOUNTAINEER
 DAM: GIBBS 9047G LOUISE Y534
 SSF BLK LOUISE Y534



SEMEN \$40

Contact Allied to order semen.



QB SPECIAL OPS K11



Homozygous Black, Homozygous Polled || PB SM
 ASA# 4117080 DOB: 3/17/2022 Tattoo: K11

Owned by:
 Hansen Simmental Ranch || Dakota Xpress

- Special Op is one stout beef bull.
- Superb muscle from every angle
- Use Special Op on cows to add power, mass and heaviness of structure for next level feeder cattle!
- All that power and still top 25% STAY!

	DIRECT					MATERNAL				CARCASS				S INDEX		
	CE	BW	WW	YW	ADG	MCE	MILK	MWW	STAY	DOC	CW	YG	MARB	REA	API	TI
EPD	7.5	3.9	93.4	150.2	0.36	4.3	31.7	78.6	18.5	12.5	54.3	-0.28	0.24	1.06	141.1	88.7
KC	0.41	0.48	0.53	0.51	0.51	0.21	0.18	0.25	0.28	0.14	0.36	0.29	0.32	0.34	-	-
95	95	10	4	3	80	4	2	20	40	2	90	40	15	35	25	

SEMEN \$40

Contact Allied to order semen.



HSR POWER PLUS D206

SIRE: HART ASSULT 059G
 HART MISS 024D

COLORADO BRIDLE BIT E752

DAM: QB MS G906
 QB MS E768

ALLIED ORigen
 GENETIC RESOURCES

Homozygous Black, Homozygous Polled || PB SM
 ASA# 4225851 DOB: 3/24/2023 Tattoo: L175

Owned by:
 Eichacker Simmentals || Keller Broken Heart Ranch

- Kota was the big, ultra attractive, perfect structured brother in the lead flush at the 2024 Keller Broken Heart Ranch sale.
- Genesis was a perfect mating for the great 106Z donor to add punch without sacrificing maternal greatness and carcass traits.
- Clean fronted, level hiped and extended from front to rear, he is easy



Dam of Kota



Sire of Kota

- on the eyes and a whole lot more!
- Expect Kota to enhance docility, hoof structure and soundness as well.



KBHR KOTA L175

PB SIMMENTAL

	DIRECT					MATERNAL					CARCASS				S INDEX	
	CE	BW	WW	YW	ADG	MCE	MILK	MWW	STAY	DOC	CW	YG	MARB	REA	API	TI
EPD	12.5	0.7	89.5	144.6	0.34	8.7	22.5	67.1	19.3	17.3	50.0	-0.20	0.86	0.92	186.6	105.1
ACC	0.47	0.51	0.53	0.53	0.53	0.31	0.26	0.34	0.37	0.51	0.48	0.38	0.45	0.45	-	-
RANK	35	40	15	10	10	15	55	30	15	4	4	99	1	40	1	1

WS PROCLAMATION E202
 SIRE: LBRS GENESIS G69
 LBR DIANA D69

WS HOT BEEF X38
 DAM: BAR CK MS X38 106Z
 BAR CK MS MEAT MKR 323T



SEMEN \$30

Contact Allied to order semen.

ORigen **ALLIED**
 GENETIC RESOURCES

TJ LAMBEAU 558L

Homozygous Black, Homozygous Polled || PB SM
 ASA# 4217516 DOB: 1/8/2023 Tattoo: 558L

Owned by:
Triangle J Ranch



- A wonderful heifer bull candidate who studies with top tier maternal and breed leading marbling.
- A standout in the 2024 Triangle J Ranch Bull Sale who was flawless in his structure and will be a foot improver!
- 69J is featured on the bottom side of the pedigree who is one of the up-and-coming stars of Triangle J's donor battery.
- If you are looking for a heifer bull who will not sacrifice type and improve marbling look no further.



Maternal grandsire of Lambeau



Sire of Lambeau

EPD	DIRECT					MATERNAL					CARCASS				S INDEX	
	CE	BW	WW	YW	ADG	MCE	MILK	MWW	STAY	DOC	CW	YG	MARB	REA	API	TI
18.1	-2.8	73.7	109.1	0.22	11.2	31.4	68.2	19.2	8.3	12.2	-0.27	0.73	0.69	184.6	97.6	
0.43	0.46	0.49	0.49	0.49	0.27	0.22	0.30	0.33	0.43	0.43	0.34	0.40	0.40	-	-	
2	3	70	70	70	2	4	25	15	85	99	95	2	90	2	10	

SEMEN \$30

Contact Allied to order semen.



HOOK'S EAGLE 6E
 SIRE: TJ GOLD 274G
 TJ 12C

TJ HEISMAN 388F
 DAM: TJ 69J
 TJ 2B



Homozygous Black, Homozygous Polled || PB SM
 ASA# 4190231 DOB: 1/12/2023 Tattoo: L31

Owned by:
 Jeff Beck || Little Bitterroot River Simmental

- Limited Edition was the highly popular bull at the 2024 Bulls of the Big Sky Sale, admired for being a heifer safe bull with tremendous natural thickness
- This wide based, thick made, deep ribbed Bold Ruler son carries the Ace logo and scored a 5 on the Right Choice evaluation
- Exceptional maternal value with top values for BW, MCE, stay and docility and still boasts a top 4% marbling EPD



	DIRECT					MATERNAL					CARCASS				S INDEX	
	CE	BW	WW	YW	ADG	MCE	MILK	MWW	STAY	DOC	CW	YG	MARB	REA	API	TI
EPD	14.8	-1.0	75.9	125.5	0.31	9.7	22.7	60.6	19.5	18.3	22.1	-0.19	0.61	0.64	174.3	93.1
ACC	0.45	0.50	0.49	0.49	0.49	0.24	0.20	0.29	0.33	0.45	0.41	0.32	0.37	0.38	-	-
RANK	15	15	60	30	15	10	55	60	10	2	70	99	4	95	4	15

WS PROCLAMATION E202
 SIRE: KBHR BOLD RULER H152
 BAR CK MS X38 106Z

TNT AXIS X307
 DAM: LBR SUMMER RAIN A31
 LBR NIGHT DREAM M22



SEMEN \$30

Contact Allied to order semen.



Sire of Limited Edition

BAS MONEY MAKER J801



Homozygous Black, Homozygous Polled || PB SM
 ASA# 3978845 DOB: 2/20/2021 Tattoo: J801

Owned by:
 Bielenberg Angus and Simmental || Kirk Lynch

- Money Maker has become a great one for making baldies with great EPD profiles!
- He is an extremely stout long bodied bull jammed packed with muscle and comes with great bone and large feet. His feet have perfect angle and great claw.
- Money has been described as structurally extra correct and straight as an arrow.
- His first calves have been born unassisted and have a lot of vigor and are quick to start nursing.
- Money Maker came light and weaned off at 115wwr, number one in herd, and well as number 1 bull at yearling weight with a 114 ratio.

EPD	DIRECT					MATERNAL					CARCASS				S INDEX	
	CE	BW	WW	YW	ADG	MCE	MILK	MWW	STAY	DOC	CW	YG	MARB	REA	API	TI
26.2	-7.0	100.4	157.6	0.36	14.7	33.1	83.2	18.4	17.3	63.0	-0.45	0.52	1.58	203.1	115.7	
0.54	0.61	0.57	0.56	0.56	0.32	0.25	0.35	0.39	0.54	0.46	0.37	0.42	0.45	-	-	
1	1	2	2	3	1	2	1	20	4	1	25	10	1	1	1	

SEMEN \$25

Contact Allied to order semen.



HOOK'S BLACK HAWK 50B
 SIRE: HOOK'S EAGLE 6E
 HOOK'S CRYSTAL 1C

HOOK'S BEACON 56B
 DAM: BAS MISS BEACON F801
 3C CROCUS 6623D B



Homozygous Black, Homozygous Polled || PB SM
 ASA# 3960639 DOB: 2/21/2021 Tattoo: 210J

LCDR RESERVE 210J

PB SIMMENTAL

Owned by:
All Beef LLC || Genex || Gibbs Farms || Lazy C Diamond Ranch

- With greater progeny proof coming all of the time, Reserve remains one of the great, outcross, baldy options available among Purebred options.
- Ultimately balanced for performance, he currently ranks in the top half of the breed for almost every important trait and in the top 20% in 10 categories.



Reserve son at TSN Simmentals



Grandam of Reserve

- Expect extra length and stretch from these calves with the potential for accelerated growth on feed.
- The feet and structure of the Reserve calves are exceptional as well with wonderful hoof quality.



	DIRECT					MATERNAL					CARCASS				S INDEX	
	CE	BW	VW	YW	ADG	MCE	MILK	MWW	STAY	DOC	CW	YG	MARB	REA	API	TI
EPD	10.8	1.5	95.7	147.9	0.33	8.0	17.5	65.2	16.3	14.1	39.3	-0.34	0.65	1.09	167.7	102.1
ACC	0.59	0.80	0.71	0.66	0.66	0.28	0.20	0.32	0.33	0.53	0.51	0.38	0.45	0.46	-	-
RANK	60	55	5	5	10	20	90	35	45	25	15	75	3	15	10	3

CDI ENTOURAGE 156U
 SIRE: HHS MR ENTOURAGE 867B
 HHS MISS 836Z

WS CEO C155
 DAM: LCDR MS ECHO 43E
 LCDR MS CHLOE 55C



SEMEN \$30

Contact Allied to order semen.



MR ISHEE TRIPLE TRAIL BLAZER



Homozygous Black, Homozygous Polled || PB SM
 ASA# 3741071 DOB: 2/2/2020 Tattoo: 018H

Owned by:
Ishee Simmental

- Baldy cattle are in hot demand by both purebred and commercial breeders who pay top \$ for them!
- Triple Trail Blazer is a rare - third generation, Homo Black, Homo Polled BALDY that produces a higher % of BALDY calves that are hot sellers!
- Triple Trail Blazer cattle are big bodied, square hipped, great footed with lots of natural fleshing ability and muscle dimension!
- Triple Trail Blazer carries a top 25% API of \$150.5, top 15% CE, top 20% MCE top 30% Marbling!
- Triple Trail Blazer is a massive ribbed, sound footed, big scrotal bull that produces top selling sons and daughters!
- His Baldy dam traces back to the high marbling Angus bull 10X!
- High Seller at Ishee's from over 40 years of an intense A.I. program!



Trail Blazer son



Trail Blazer son and high seller at Double J Farms

BWA KCC EPD	DIRECT					MATERNAL					CARCASS				S INDEX	
	CE	BW	WW	YW	ADG	MCE	MILK	MWW	STAY	DOC	CW	YG	MARB	REA	API	TI
	14.8	-2.0	69.9	96.6	0.17	8.1	22.2	57.1	19.3	12.5	7.6	-0.15	0.28	0.17	150.6	80.7
	0.55	0.61	0.56	0.57	0.57	0.33	0.26	0.35	0.39	0.47	0.47	0.37	0.43	0.43	-	-
	15	10	85	90	95	20	60	75	15	40	99	99	30	99	25	50

SEMEN \$30

Contact Allied to order semen.



HOOK'S YELLOWSTONE 97Y
 SIRE: KOCH BIG TIMBER 685D
 KOCH MS HOOKS BOY

LRS TENX EXCELLANCE 352C
 DAM: ISHEE MS EXCELLANCE 801
 ISHEE MS CRI TIDE 306A

ALLIED ORigen
 GENETIC RESOURCES

Homozygous Black, Homozygous Polled || PB SM
 ASA# 4135893 DOB: 3/22/2022 Tattoo: K4

Owned by:
 Schnabel Ranch || Flittie Simmentals

- Here is your opportunity to get in on a son of MR SR MIC DROP that is virtually a carbon copy of his sire right down to his facial markings
- MIC CHECK was only 72# at birth with incredible growth and a flawless EPD profile making him an exciting new spread bull to the industry
- Tremendous foot and hoof quality, extra bold rib cage, deep flanked, yet very clean and refined through his front 1/3
- His dam is an outstanding upcoming female in the Flittie herd and is sired by a flush mate to the dam of TJ GOLD



Sire of Mic Check



EPD	DIRECT					MATERNAL					CARCASS				S INDEX	
	CE	BW	VV	YW	ADG	MCE	MILK	MWW	STAY	DOC	CW	YG	MARB	REA	API	TI
	13.4	-0.2	90.9	150.1	0.37	8.5	24.7	70.1	18.0	21.0	21.7	-0.40	0.02	0.76	143.2	87.6
ACC	0.45	0.49	0.49	0.48	0.48	0.24	0.18	0.28	0.30	0.44	0.40	0.32	0.35	0.37	-	-
RANK	25	25	15	4	2	15	40	20	25	1	75	50	85	75	35	25

MR SR 71 RIGHT NOW E1538
 SIRE: MR SR MIC DROP G1534
 MISS SR C1534

TJ 586C
 DAM: MISS FR G942
 MISS FRZ242

MR FR MIC CHECK K4

PB SIMMENTAL



SEMEN \$30

Contact Allied to order semen.

ORigen **ALLIED**
 GENETIC RESOURCES

TJ CREED 565L



Homozygous Black, Homozygous Polled || PB SM
 ASA# 4217523 DOB: 1/14/2023 Tattoo: 565L

Owned by:
 All Beef LLC || Gibbs Farms || Genex || Triangle J Ranch

- A powerful and unique twist to the options for improved white-faced genetic options.
- Tremendous thickness, rib, great feet and structure with great testicular development made this lot 1 bull at the 2024 Triangle J bull sale easy to find and appreciate.
- Definitely some uniqueness to his pedigree, particularly for white-faced bulls.
- His genetic evaluation is a huge plus as well with a spread from 18 CED to +151 for YW. Top 4% or better also for MCE, Doc., MB, \$API and \$TI.

EPD	DIRECT					MATERNAL					CARCASS				S INDEX	
	CE	BW	WW	YW	ADG	MCE	MILK	MWW	STAY	DOC	CW	YG	MARB	REA	API	TI
17.4	-1.4	88.4	151.3	0.39	10.0	17.5	61.6	18.5	17.6	17.6	42.4	-0.15	0.61	0.51	182.8	101.4
0.42	0.47	0.48	0.49	0.49	0.24	0.17	0.26	0.34	0.41	0.41	0.33	0.39	0.39	-	-	
3	10	20	4	1	4	90	55	20	4	15	99	4	99	2	3	

SEMEN \$40

Contact Allied to order semen.



WS PROCLAMATION E202
 SIRE: KBHR BOLD RULER H152
 BAR CK MS X38 106Z

CAMP CAMPBELL E737
 DAM: TJ 60H
 TJ 5F



Sire of Creed

Homozygous Black, Homozygous Polled || PB SM
 ASA# 4104285 DOB: 3/24/2022 Tattoo: K167

Owned by:
 All Beef LLC || Gibbs Farms || J/C Simmental || Keller Broken Heart Ranch

- Growth, Marbling, STAY and Profit set Screenshot apart from other sires in his category.
- Out of one of the great young donors in the breed, he offers 5 trait EPDs in the top 1% of the breed and 3 more in the top 3% or higher.
- Tremendously attractive, he was the lead off, lot 1 bull at the 2023 Keller Broken Heart Sale.
- Powerful, loose structured and ultimately complete, this guy could change the way we use white-faced bulls.



Dam of Screenshot

KBHR SCREENSHOT K167

PB SIMMENTAL

	DIRECT					MATERNAL				CARCASS				S INDEX		
	CE	BW	VV	YW	ADG	MCE	MILK	MWW	STAY	DOC	CW	YG	MARB	REA	API	TI
EPD	12.9	2.1	106.6	166.9	0.38	8.4	25.8	79.0	18.6	16.8	52.6	-0.24	0.82	0.73	187.9	113.3
ACC	0.45	0.49	0.51	0.52	0.52	0.27	0.19	0.28	0.34	0.50	0.45	0.36	0.44	0.43	-	-
RANK	30	70	1	1	2	15	30	2	20	10	3	95	1	80	1	1

HHS MR 847D
 SIRE: KBHR REVOLUTION H071
 WS MISS SUGAR C4

WS PROCLAMATION E202
 DAM: KBHR DEBUTANTE H113
 BAR CK MS X38 106Z



SEMEN \$30

Contact Allied to order semen.

ORigen **ALLIED**
 GENETIC RESOURCES

RUBYS HITMAN 0107H



Heterozygous Black, Homozygous Polled || PB SM
 ASA# 3768626 DOB: 3/11/2020 Tattoo: 0107H

Owned by:
 Beach Cattle Co || Ruby Cattle Co

- A truly rare tool, Hitman has earned a genetic profile like few others and is out of the dollar generating machine Linda donor from Ruby's.
- Hitman needs to be put to use to make something special, especially on the red side.
- A whopping 15 EPD traits in the top 15% of the breed, with 6 in the top 5% or better!
- Clean, attractive profiling progeny with extra muscle and substance of bone.

EPD	DIRECT					MATERNAL					CARCASS				S INDEX	
	CE	BW	WW	YW	ADG	MCE	MILK	MWW	STAY	DOC	CW	YG	MARB	REA	API	TI
	21.2	-1.4	94.0	147.3	0.33	11.4	28.1	75.0	11.9	18.1	50.9	-0.49	0.27	1.34	157.4	98.3
BW/KC	0.56	0.68	0.62	0.60	0.60	0.34	0.24	0.35	0.37	0.50	0.50	0.37	0.45	0.44	-	-
	1	10	10	10	10	1	15	10	90	3	4	10	35	2	15	5

SEMEN \$25

Contact Allied to order semen.



BAR CK HUNTER 3006A
 SIRE: KBHR SNIPER E036
 KBHR C078

WS ALL-AROUND Z35
 DAM: RUBYS LINDA 721E
 RUBYS LINDA 341A



Sire of Hitman

ALLIED ORigen
 GENETIC RESOURCES

Heterozygous Black, Homozygous Polled || PB SM
 ASA# 4190235 DOB: 2/1/2023 Tattoo: L254

Owned by:
Gaston Hornung || Little Bitterroot River Simmental

- A physical standout and the high selling bull at the 2024 Bulls of the Big Sky Sale
- A negative birthweight Genesis son with outstanding predictions for growth, docility and carcass traits
- Very athletic in his movement with exceptional hoof quality



Sire of Logan



Dam of Logan

- Generations of maternally based females with the top two donors, Sapphire 254E and Dianna D69 at Little Bitterroot River Simmental leading the way



	DIRECT					MATERNAL					CARCASS				S INDEX	
	CE	BW	VV	YW	ADG	MCE	MILK	MWW	STAY	DOC	CW	YG	MARB	REA	API	TI
EPD	12.8	-0.4	93.9	145.8	0.32	6.6	24.3	71.2	19.1	14.6	49.0	-0.29	0.80	1.10	186.9	107.9
ACC	0.47	0.52	0.50	0.51	0.51	0.29	0.24	0.33	0.36	0.47	0.44	0.36	0.42	0.43	-	-
RANK	35	20	10	10	10	40	40	15	15	20	5	90	1	15	1	1

WS PROCLAMATION E202
 SIRE: LBRS GENESIS G69
 LBR DIANA D69

HOOK'S BEACON 56B
 DAM: PLR SAPPHIRE 254E
 PLR MISS BELLA 235C



SEMEN \$30

Contact Allied to order semen.

ORigen **ALLIED**
 GENETIC RESOURCES

HOOK'S EAGLE 6E

Homozygous Black, Homozygous Polled || 3/4 SM 1/4 AN
 ASA# 3253742 DOB: 1/22/2017 Tattoo: 6E

Owned by:
 All Beef LLC || Genex || Hook Farms || Iron Creek Cattle || Triangle J Ranch

3/4 SIMMENTAL



- Not much more you can say about a sire than Eagle. Still the #1 most used bull in the breed because he does so many things so well.
- Awesome depth of body and width of structure. Eagle adds mass and body dimension to every female he mates.
- Tremendous improver of disposition as well as consistently adding grow, Marbling and REA.
- Now deceased, get your Eagle semen while it lasts.



LRS MS Eagle 983G, Prolific Donor Dam at Lassle Simmentals



IR/JLN Boomer, Eagle son

	DIRECT					MATERNAL					CARCASS				S INDEX	
	CE	BW	WW	YW	ADG	MCE	MILK	MWW	STAY	DOC	CW	YG	MARB	REA	API	TI
EPD	14.4	-2.1	98.9	155.0	0.35	4.8	20.5	69.9	16.7	19.3	43.7	-0.41	0.60	1.39	167.4	104.0
KC	0.86	0.95	0.94	0.94	0.94	0.81	0.84	0.87	0.68	0.89	0.78	0.58	0.76	0.75	-	-
	30	20	2	3	10	85	80	20	30	2	20	10	20	1	10	1

SEMEN \$30

Contact Allied to order semen.



HOOK'S XAVIER 14X
 SIRE: HOOK'S BLACK HAWK 50B
 HOOK'S SYVETTE 100Y

GW-WBF SUBSTANCE 820Y
 DAM: HOOK'S CRYSTAL 1C
 HOOK'S UNDERESTIMATED 6U



Homozygous Black, Homozygous Polled || 3/4 SM 1/4 AN
 ASA# 3563620 DOB: 2/21/2019 Tattoo: 210G

Owned by:
 Highland Acres || Cow Camp Ranch || Hook Farms

- Progeny performance and scan data have driven Galileo's genetic profile to rival the best in the entire multi-breed IGS evaluation platform.
- EPD and actual performance profile project heifer bull potential, while not sacrificing growth, maternal, and carcass traits.



Open heifer from Bridle Bit Simmentals



Next Up, Galileo son

- Top tier STAY, Maternal, Docility, and \$ Index values give further credibility to the cow-herd-building potential of this Eclipse son.
- Dam is a high-performing Beacon daughter who is a maternal sister to AI sires: Hook's Bounty 6B, Hook's Freedom 45F, and CLRS Johnny Walker 1049J.
- First daughters have shown excellent maternal instincts with good teat size and tight udder suspension.



HOOK'S GALILEO 210G

	DIRECT					MATERNAL					CARCASS				\$ INDEX	
	CE	BW	WW	YW	ADG	MCE	MILK	MWW	STAY	DOC	CW	YG	MARB	REA	API	TI
EPD	17.6	-2.2	89.1	139.6	0.32	10.3	38.0	82.5	19.0	21.0	42.8	-0.17	1.19	0.61	204.0	114.1
ACC	0.79	0.90	0.86	0.86	0.86	0.49	0.33	0.45	0.42	0.81	0.66	0.50	0.64	0.59	-	-
10	20	15	15	20	10	1	1	10	1	25	70	1	65	1	1	

BRIDLE BIT CALVARY C503
 SIRE: BRIDLE BIT ECLIPSE E744
 BRIDLE BIT MISS A327

HOOK'S BEACON 56B
 DAM: HOOK'S EVITA 18E
 HOOK'S YUMA 49Y



SEMEN \$50

Contact Allied to order semen.

ORigen **ALLIED**
 GENETIC RESOURCES

3/4 SIMMENTAL

SCHOOLEY KROWN 28K

Homozygous Black, Homozygous Polled || 3/4 SM 1/4 AN
 ASA# 4115546 DOB: 2/14/2022 Tattoo: 28K

Owned by:
 English Oaks Ranch || Schooley Cattle



- Big growth and great look should put Krown on your short list.
- Sound structured, good footed with tremendous length and thickness, he stuck out in a great gro of bulls.
- White faced genetics don't often come with his kind of carcass trait improvement.
- His donor dam 823F is compiling quite a resume as well and just getting started.



Dam of Krown

EPD	DIRECT					MATERNAL					CARCASS				S INDEX	
	CE	BW	WW	YW	ADG	MCE	MILK	MWW	STAY	DOC	CW	YG	MARB	REA	API	TI
	12.8	0.1	99.9	156.7	0.35	8.5	28.2	78.0	14.4	18.6	57.7	-0.16	0.80	1.00	166.9	106.3
RMK	0.43	0.52	0.47	0.47	0.47	0.23	0.19	0.27	0.33	0.44	0.40	0.33	0.40	0.40	-	-
KC	50	50	2	3	10	25	20	3	55	3	4	70	10	10	10	1

SEMEN \$50

Contact Allied to order semen.



HHS MR 847D
 SIRE: KBHR REVOLUTION H071
 WS MISS SUGAR C4

G A R PROPHET
 DAM: SCHOOLEY MISS 3000A 823F
 CCR MS SINGLETARY 3000A



Sire of Krown

ALLIED ORigen
 GENETIC RESOURCES

Homozygous Black, Homozygous Polled || 3/4 SM 1/4 AN
 ASA# 4028670 DOB: 9/10/2021 Tattoo: 4142J

Owned by:
 Cow Camp Ranch || T-Heart Ranch

- A true dual purpose herdsire who will add value to terminal bound progeny while siring the type of females who will keep you in business for years to come.
- The most maternally focused Genesis's son on the market! El Dorado ranks in the Top 15% for Stay, and Top 25% for MWW. While having



CCR Waco 4142G, Maternal brother to El Dorado



CCR Cochise 4142H, Maternal brother to El Dorado

- the growth and power which has made his sire so in demand.
- EL Dorado's dam is as a high proof of a SimAngus cow as you will find. Raising former high sellers CCR Waco and CCR Cochise. Likewise, each one of her high demand sons were raised as natural calves.
- In terms of physical appeal, one will be hard pressed to find a bull who is more athletic on the move while have picture perfect feet. Look for El Dorado sons to headline the 2025 T Heart Ranch High Altitude Sale.

CCR THR EL DORADO 4142J



	DIRECT					MATERNAL					CARCASS				S INDEX	
	CE	BW	WW	YW	ADG	MCE	MILK	MWW	STAY	DOC	CW	YG	MARB	REA	API	TI
EPD	14.7	-0.5	82.5	126.4	0.27	7.7	26.0	67.2	18.4	14.1	45.4	-0.03	0.95	0.47	178.3	99.4
ACC	0.46	0.55	0.53	0.51	0.51	0.26	0.22	0.31	0.32	0.47	0.43	0.35	0.41	0.41	-	-
RANK	30	40	30	35	50	40	35	25	15	30	20	95	2	85	3	3

WS PROCLAMATION E202
 SIRE: LBRS GENESIS G69
 LBR DIANA D69

CCR CATALYST 7035W
 DAM: CCR MS CATALYST 4142B
 CCR MS E-Z-3 2073Z



SEMEN \$30

Contact Allied to order semen.

ORigen **ALLIED**
 GENETIC RESOURCES

3/4 SIMMENTAL

CLRS KANGAROO 956K

Homozygous Black, Homozygous Polled || 3/4 SM 1/4 AN
 ASA# 4031976 DOB: 1/19/2022 Tattoo: CLRS 956K

Owned by:
Valigura Simmental || Clear Springs Cattle



- Kangaroo will add frame, growth and carcass merit like few bulls can! He has all the traits to make profitable feeder cattle without sacrificing maternal quality.
- This long, extended and clean-made Essential son is a standout for his superior disposition as well.
- His first calves are showing his potential for explosive growth! Jordan and Amy Valigura have a great sampling of his calves this year as well as about a dozen here at Clear Springs.

3/4 SIMMENTAL

EPD	DIRECT					MATERNAL					CARCASS				S INDEX	
	CE	BW	WW	YW	ADG	MCE	MILK	MWW	STAY	DOC	CW	YG	MARB	REA	API	TI
	13.2	0.9	98.4	169.4	0.44	8.9	25.0	73.9	18.6	17.9	65.3	-0.29	0.72	1.37	173.6	104.2
RMK	0.45	0.52	0.49	0.50	0.50	0.24	0.28	0.34	0.32	0.46	0.42	0.34	0.41	0.41	-	-
KC	45	70	2	1	1	20	45	10	15	5	2	30	10	1	4	1

SEMEN \$30

Contact Allied to order semen.



GIBBS 7382E BROAD RANGE
 SIRE: GIBBS 9114G ESSENTIAL
 GIBBS 7153E STAR 3136A

HOOK'S CAPITALIST 37C
 DAM: CLRS GLAMOR 956G
 CLRS AIM XCELLENCE 306 A



Sire of Kangaroo

ALLIED ORigen
 GENETIC RESOURCES

Homozygous Black, Homozygous Polled || 3/4 SM 1/4 AN
 ASA# 3911170 DOB: 2/3/2021 Tattoo: 114J

Owned by:
 Ishee Bred Simmentals || Johnathan Abram

- Use Lights Out to make big footed, square topped, high-capacity Bulls and Heifers that read with lots of muscle dimension and growth!
- Lights Out is one of the top SimAngus bulls in the database with a \$179.8 API (top 3%) and \$101.9 TI (top 2%)!
- Talk about cow family- Lights Out dam has had 5 A.I. calves in a row with a 363-day calving interval, 90 bwt. ratio, 108 w.wt. ratio, 105 Y.wt. ratio, extremely fertile, moderate framed cow with outstanding mothering ability who weans a high% of her body weight in calf wt.!
- Lights Out is in the 25% or higher for 16/18 E.P.D. traits!
- Lights Out will improve your bottom line as he excels for Growth at weaning and yearling, Stay, Docility and Carcass traits!
- Lights Out is a combination of power on foot and a breed improver for EPDs.



Lights Out son



3/4 SIMMENTAL

	DIRECT					MATERNAL					CARCASS				S INDEX	
	CE	BW	VV	YW	ADG	MCE	MILK	MWW	STAY	DOC	CW	YG	MARB	REA	API	TI
EPD	16.4	-1.4	87.5	143.4	0.35	9.4	27.9	71.5	18.2	16.8	40.6	-0.27	0.62	0.84	180.1	101.9
ACC	0.53	0.56	0.52	0.53	0.53	0.32	0.25	0.34	0.38	0.43	0.46	0.36	0.42	0.42	-	-
RANK	15	25	15	10	10	15	20	15	15	10	30	35	20	25	2	2

CCR COWBOY CUT 5048Z
 SIRE: WS PROCLAMATION E202
 WS MISS SUGAR C4

S D S GRADUATE 006X
 DAM: ISHEE MS GRADUATE 820
 ISHEE MS NIGHTRIDE 604



SEMEN \$30

Contact Allied to order semen.

ORigen **ALLIED**
 GENETIC RESOURCES

KBHR HARTLAND H100

Homozygous Black, Homozygous Polled || 3/4 SM 1/4 AN
 ASA# 3789487 DOB: 3/23/2020 Tattoo: H100

Owned by:
 SRF Simmentals || Kellers Broken Heart Ranch

3/4 SIMMENTAL



- A combination of dominant phenotype and breed improving EPDs make Hartland unique and special.
- Wonderful on the profile and extra long, his structure, levelness and balance made him a favorite at the 2021 KBHR bull sale.
- The maternal complex of EPDs is as good as you will find with top values for MCE, MWW, STAY and Doc.
- His young Nightforce sired dam already has 4 calves weaned to ratio 108.
- Use this unique pedigreed 3/4 blood to generate outcross purebreds for the future.



Son of Hartland and high-seller from Wildberry Farms



Sire of Hartland

EPD	DIRECT					MATERNAL				CARCASS				S INDEX		
	CE	BW	WW	YW	ADG	MCE	MILK	MWW	STAY	DOC	CW	YG	MARB	REA	API	TI
	15.1	-1.1	79.4	123.5	0.28	10.4	29.8	69.4	21.5	12.7	28.2	-0.18	0.71	0.72	172.9	93.7
RMSE	0.60	0.77	0.72	0.70	0.70	0.30	0.25	0.37	0.34	0.58	0.49	0.37	0.45	0.42	-	-
KC	25	30	40	40	40	10	15	20	2	45	65	65	10	45	4	15

SEMEN \$30

Contact Allied to order semen.



KOCH BIG TIMBER 685D
 SIRE: TJ HEISMAN 388F
 TJ 67D

TRPH RRR NIGHTFORCE B30
 DAM: KBHR E084
 KBHR CLARA C093

ALLIED ORigen
 GENETIC RESOURCES

Homozygous Black, Homozygous Polled || 3/4 SM 1/4 AN
 ASA# 4029506 DOB: 2/17/2022 Tattoo: JC87K

Owned by:
Fauth Ranch || J/C Simmentals

- One of Homeland's finest son who is backed by the Hook's Evita donor dam.
- A sale highlight in a very popular flush in the 2023 Great Lakes Beef Connection Sale and Musclemans was the crowd favorite for balance and type.



Dam of Muscle Man 87K



Full Sister to Muscle Man

- If you are in search of the extra mass and performance you find in Homeland, but with improved docility Musclemans would be a great fit.
- Look for Musclemans sons to be topping the Bulls of the Big Sky or Great Lakes Beef Connection in 2025!



JC MUSCLEMAN 87K

3/4 SIMMENTAL

EPD	DIRECT					MATERNAL					CARCASS				S INDEX	
	CE	BW	VV	YW	ADG	MCE	MILK	MWW	STAY	DOC	CW	YG	MARB	REA	API	TI
	12.2	1.1	97.2	149.8	0.33	8.8	28.0	76.5	21.3	13.6	40.5	-0.47	0.42	1.15	157.8	95.4
RANK ACC	0.45	0.50	0.51	0.52	0.52	0.28	0.21	0.29	0.35	0.49	0.44	0.35	0.41	0.41	-	-
	60	70	3	5	15	25	20	4	2	35	30	2	45	3	15	10

REDHILL 672X X004 231A
 SIRE: CLRS HOMELAND 327H
 CLRS ALWAYS XCELLENT

HOOK'S BEACON 56B
 DAM: HOOK'S EVITA 18E
 HOOK'S YUMA 49Y



SEMEN \$30

Contact Allied to order semen.

ORigen **ALLIED**
 GENETIC RESOURCES

JC MR PONTIAC D114K

Homozygous Black, Homozygous Polled || 3/4 SM 1/4 AN
 ASA# 4029546 DOB: 2/24/2022 Tattoo: JCD114K

Owned by:
 Rydeen Farms Simmental || Cow Camp Ranch



- One of the standout bulls to sell in 2023 and his first calves are living up to expectations.
- 20% ranking or better for 13 crucial value traits and no holes across the gambit.
- Unique pedigree options as well and can be used on Purebreds to make Purebred progeny.
- Clean made, level and extra attractive on the profile. His first calves are showing that same great look and coming easy.

3/4 SIMMENTAL

EPD	DIRECT					MATERNAL					CARCASS				S INDEX	
	CE	BW	WW	YW	ADG	MCE	MILK	MWW	STAY	DOC	CW	YG	MARB	REA	API	TI
15.7	-2.1	85.7	140.2	0.34	10.2	23.3	66.1	21.6	16.9	44.3	-0.25	0.70	1.05	179.8	98.8	
0.45	0.51	0.53	0.52	0.52	0.23	0.26	0.30	0.31	0.42	0.41	0.33	0.38	0.39	-	-	
20	20	20	15	10	10	55	30	2	10	20	45	10	10	3	4	

SEMEN \$50

Contact Allied to order semen.



GIBBS 7382E BROAD RANGE
 SIRE: GIBBS 9114G ESSENTIAL
 GIBBS 7153E STAR 3136A



GIBBS 4475B PIRATE
 DAM: FSCR D114 LUCILLE B089XP
 FSCR B089 RKE 107



Sire of Pontiac



Homozygous Black, Homozygous Polled || 3/4 SM 1/4 AN
 ASA# 4192163 DOB: 2/3/2023 Tattoo: JC738L

Owned by:
Ludwig Simmentals || 5G Farms || J/C Simmentals

- A standout in the 2024 Great Lakes Beef Connection Sale whose physical presence and genetic profile makes him a must use bull in 2024.
- Lawless is IR Original finest son and comes in a solid black color pattern!
- Lawless is one of the first sons of Hook's June who traces back to the powerful and highly proven Fantasia 94F.
- Look for the ACE certified son to transmit genetic excellence across the board.



Sire of Mr Lawless



3/4 SIMMENTAL

	DIRECT					MATERNAL					CARCASS				S INDEX	
	CE	BW	VW	YW	ADG	MCE	MILK	MWW	STAY	DOC	CW	YG	MARB	REA	API	TI
EPD	15.6	-2.8	85.2	133.8	0.30	9.3	27.6	72.1	18.2	16.2	43.5	-0.25	0.85	0.96	180.8	103.1
ACC	0.41	0.45	0.48	0.49	0.49	0.21	0.12	0.22	0.29	0.42	0.39	0.31	0.37	0.37	-	-
RANK	20	15	20	20	30	20	25	10	15	15	20	45	4	15	2	2

G A R ORIGINAL SIN
 SIRE: IR ORIGINAL H341
 IR MS VIENNA E758

LBRS GENESIS G69
 DAM: HOOK'S JUNE 24J
 HOOK'S FANTASIA 94F



SEMEN \$30

Contact Allied to order semen.



JC FORTUNATE J741L

Homozygous Black, Homozygous Polled || 3/4 SM 1/4 AN
 ASA# 4192184 DOB: 2/9/2023 Tattoo: JCJ741L

Owned by:
 Glover Cattle Company || J/C Simmental

3/4 SIMMENTAL



- An absolute brute of SimAngus bull who was the \$44,000 sale topper at the 2024 Great Lakes Beef Connection Sale.
- If you are looking for mass, density, and extra volume without sacrificing maternal or carcass traits Fortunate will be a must use in 2024.
- Fortunate stems from one of the most prolific Simmental donors in recent memory in Hook's Evita 18E.
- Fortunate 3/4 SM pedigree will lend well for those seeking the next generation of great purebred genetics.



Dam of JCJ741L



Sire of Fortunate

EPD	DIRECT					MATERNAL				CARCASS				S INDEX		
	CE	BW	WW	YW	ADG	MCE	MILK	MWW	STAY	DOC	CW	YG	MARB	REA	API	TI
	14.3	-1.1	90.0	147.2	0.36	7.8	29.4	74.3	16.7	14.8	53.8	-0.35	0.95	1.23	182.6	107.5
ACC	0.46	0.50	0.51	0.51	0.51	0.29	0.23	0.31	0.36	0.48	0.45	0.37	0.44	0.44	-	-
30	30	30	10	10	10	35	15	10	30	25	10	15	2	1	2	1

SEMEN \$30

Contact Allied to order semen.



LEACHMAN PROPHET J030Z
 SIRE: SOUTHERN FORTUNE TELLER
 GW MISS PREM BEEF 246Z

HOOK'S BEACON 56B
 DAM: HOOK'S EVITA 18E
 HOOK'S YUMA 49Y

ALLIED ORigen
 GENETIC RESOURCES

Homozygous Black, Homozygous Polled || 3/4 SM 1/4 AN
 ASA# 4192247 DOB: 2/24/2023 Tattoo: JC10L

Owned by:

Trails End Cattle || Clear Springs Cattle || J/C Simmentals

- Total power and performance in a moderate frame, Lookout is as thick muscled as any bull in the book.
- He has awesome feet and legs with excellent testicular development and made semen on his first jump.
- His ultra balanced EPD profile and dense made phenotype gives him tremendous mating flexibility.
- Adjusted to a 774 WW with a 110 ratio off a phenomenal Genesis first calf heifer.



JC LOOKOUT 10L

3/4 SIMMENTAL

	DIRECT					MATERNAL					CARCASS				S INDEX	
	CE	BW	WW	YW	ADG	MCE	MILK	MWW	STAY	DOC	CW	YG	MARB	REA	API	TI
EPD	14.5	-1.6	93.3	148.5	0.34	9.6	28.8	75.4	16.1	13.9	43.2	-0.27	0.98	1.12	184.4	110.1
ACC	0.45	0.49	0.47	0.48	0.48	0.25	0.17	0.26	0.32	0.44	0.40	0.32	0.37	0.37	-	-
RANK	30	25	10	10	10	15	15	5	35	30	25	35	2	3	2	1

REDHILL BEACON 15E 29G
 SIRE: REDHILL COUNTRYMAN 81J
 REDHILL 231A 273B 446F

LBRS GENESIS G69
 DAM: HOOK'S JEWEL 10J
 HOOK'S FANTASIA 94F



SEMEN \$30

Contact Allied to order semen.

ORigen **ALLIED**
 GENETIC RESOURCES

HOOK'S FULL FIGURES 11F

Heterozygous Black, Homozygous Polled || 3/4 SM 1/4 AN
 ASA# 3403323 DOB: 1/21/2018 Tattoo: 11F

Owned by:
 Tekrony Brothers || Hook Farms



- Diplomat son possessing faultless structure, massive rib dimension and impressive muscle expression.
- Dominant data achieved at every test and measurement, while posting performance ratios 109 or higher.
- Progeny have been met with tremendous breeder satisfaction due to their impressive structural soundness and complete performance profile.
- Full Figure's daughters are setting the standard for udder quality, maternal excellence and raising sale topping progeny.



WS Full House, son of Full Figures



Full Figures son, working at Diamond H Ranch

EPD	DIRECT					MATERNAL					CARCASS				S INDEX	
	CE	BW	WW	YW	ADG	MCE	MILK	MWW	STAY	DOC	CW	YG	MARB	REA	API	TI
16.1	-2.0	84.6	133.3	0.30	12.3	28.2	70.4	17.2	13.2	41.3	-0.31	0.67	1.24	168.0	97.5	
0.72	0.87	0.84	0.83	0.83	0.55	0.54	0.62	0.46	0.72	0.70	0.54	0.69	0.68	-	-	
15	20	20	20	30	2	20	15	25	40	25	25	15	1	10	5	

SEMEN \$30

Contact Allied to order semen.



SIRE: MAR INNOVATION 251
 TJ DIPLOMAT 294D
 TJ 33Y

DAM: HOOKS SHEAR FORCE 38K
 HOOK'S DOCILA 23D
 HOOK'S YONKERS 21Y

ALLIED GENETIC RESOURCES **ORigen**

Heterozygous Black, Homozygous Polled || PB SM
 ASA# 3947790 DOB: 2/16/2021 Tattoo: J10

Owned by:
 Drake Simmental || Iron Creek Simmental || Five Star Ranch

- The next step in the relentless effort to advance beef genetics is to combine genomic excellence with phenotypic excellence, and Five Star Jackson represents that progress. And he does so as an outcross to many of today's popular pedigrees, sired by Hook's Full Figures and out of KBHR F316. Jackson's genomically enhanced EPD are as follows:
- Top 1% Calving ease, and maternal calving ease, Top 2% \$API (180.7), Top 3% \$TI (101.7) and marbling, Top 10% Birthweight, milk, and stayability, Top 15% Maternal weaning weight, Top 25% Weaning weight, yearling weight, ADG, and carcass weight
- A stout, attractive, genetically advanced bull that will improve looks and a broad base of numbers — an Elite Balance Bull.
- Jackson was the \$65,000 showstopper at the recent Oak Meadow and Five Star sale.
- Over 30 calves at Drake's and all born unassisted. Calves are vigorous and showing fantastic look and depth.
- Jackson son was \$22,500 high seller at Eichacker Simmental sale and a number of high seller's around the country from his first calf crop!



FIVE STAR JACKSON J10

PB SIMMENTAL

EPD	DIRECT					MATERNAL					CARCASS				S INDEX	
	CE	BW	WW	YW	ADG	MCE	MILK	MWW	STAY	DOC	CW	YG	MARB	REA	API	TI
	19.0	-1.7	86.5	134.3	0.30	12.5	28.7	71.9	16.3	16.2	34.3	-0.27	0.72	0.93	184.2	104.2
RANK	0.60	0.75	0.71	0.69	0.69	0.32	0.24	0.36	0.36	0.57	0.53	0.41	0.51	0.49	-	-
ACC	1	10	20	20	20	1	15	15	45	10	30	95	2	40	2	2

TJ DIPLOMAT 294D
 SIRE: HOOK'S FULL FIGURES 11F
 HOOK'S DOCILA 23D

WS ALL ABOARD B80
 DAM: KBHR F316
 KBHR C295



SEMEN \$50

Contact Allied to order semen.

ORigen **ALLIED**
 GENETIC RESOURCES

WS FULL HOUSE 36K



Heterozygous Black, Homozygous Polled || PB SM
 ASA# 4070715 DOB: 2/4/2022 Tattoo: 36K

Owned by:
 Neumann Farms || Wilkinson Farms Simmentals

- Full House is physically flawless and gets it done on paper like they all need to.
- So sound, deep, thick, attractive and balanced. He impressed everyone who saw him sale day.
- Being heterozygous black with a very unique pedigree, he has the potential to make the next great red breed changer.
- 13 traits in the top 20% or higher with tremendous potential to improve REA and muscling.

EPD	DIRECT					MATERNAL				CARCASS				S INDEX	
	CE	BW	WW	YW	ADG	MCE	MILK	MWW	STAY	DOC	CW	YG	MARB	REA	API
15.1	-0.6	86.9	139.8	0.33	9.6	26.0	69.4	18.5	9.6	43.6	-0.43	0.43	1.47	167.7	96.3
0.47	0.51	0.46	0.46	0.46	0.28	0.21	0.29	0.35	0.42	0.42	0.35	0.43	0.42	-	-
15	20	20	15	10	10	30	20	20	75	10	35	15	1	10	10

SEMEN \$30

Contact Allied to order semen.



TJ DIPLOMAT 294D
 SIRE: HOOK'S FULL FIGURES 11F
 HOOK'S DOCILA 23D

KRJ HZN DIRECT IMPACT F80S

DAM: WS HARPER H98
 WS CASHMERE C29



Sire of Full House



Red, Homozygous Polled || PB SM
 ASA# 4104220 DOB: 3/21/2022 Tattoo: K102

Owned by:
 All Beef LLC || Diamond H Ranch || Keller Broken Heart Ranch

- Out of the legendary Electra donor, this Red October son offers so much value to the red population and the beef industry.
- His first calves prove what we had hoped. He will work on heifers any day and the calves will still grow!
- At printing, he is the #2 Red bull for \$API and #1 for #TI, with great spread, STAY and Marbling values.
- Recently leased to Genex, we expect nothing but great things from Charger moving forward.



Maternal sister to Charger



Sire of Charger



PB SIMMENTAL

	DIRECT					MATERNAL					CARCASS				S INDEX	
	CE	BW	VV	YW	ADG	MCE	MILK	MWW	STAY	DOC	CW	YG	MARB	REA	API	TI
EPD	17.0	-3.7	80.7	126.1	0.28	9.0	23.5	63.8	23.1	13.6	14.2	-0.33	0.90	0.80	206.6	107.1
ACC	0.46	0.52	0.54	0.55	0.55	0.27	0.30	0.36	0.33	0.47	0.42	0.34	0.42	0.40	-	-
RANK	4	2	40	30	30	10	50	45	1	30	95	80	1	70	1	1

IR IMPERIAL D948
 SIRE: MR SR RED OCTOBER G1761
 MISS SR E1761

CDI VERDICT 220Y
 DAM: WS ELECTRA E88
 HSF MISS SKY 87U



SEMEN \$35

Contact Allied to order semen.



RFS BRUNO K18



Red, Homozygous Polled || PB SM
 ASA# 4097000 DOB: 2/26/2022 Tattoo: K18

Owned by:
 Diamond H Ranch || Rydeen Farms Simmental

- A up and coming red sire with punch on the growth side!
- Special value on the maternal side as well with a tremendous set of EPDs for the cow complex, MCE, MWW, STAY, Doc., and \$API.
- His dam is making a great case for herself as the very best red donor in the breed.
- Look for his sister, RFS Luna K63 to do great things as well.

EPD	DIRECT					MATERNAL					CARCASS				S INDEX	
	CE	BW	WW	YW	ADG	MCE	MILK	MWW	STAY	DOC	CW	YG	MARB	REA	API	TI
	14.8	-1.2	96.9	146.1	0.31	8.9	26.9	75.2	19.9	18.9	57.2	-0.25	0.29	0.99	164.3	97.9
BW/KC	0.42	0.46	0.49	0.50	0.50	0.24	0.18	0.28	0.31	0.41	0.41	0.32	0.38	0.38	-	-
	15	15	4	10	15	10	25	10	10	2	2	95	30	25	10	5

SEMEN \$40

Contact Allied to order semen.



KBHR SNIPER E036
 SIRE: WS GADGET 40G
 WS EMOTION E127

CDI VERDICT 220Y
 DAM: WS ELECTRA E88
 HSF MISS SKY 87U

ALLIED ORigen
 GENETIC RESOURCES



Dam of Bruno

Red, Homozygous Polled || PB SM
 ASA# 3764845 DOB: 2/26/2020 Tattoo: 79H

Owned by:
 Mushrush Red Angus || Tim Adams || Wilkinson Simmental

- Hollywood sold in the 2021 Wilkinson sale and his calves are so impressive the owners decided to promote him this year for widespread use.
- It can be difficult to find unique red genetics that also top the genetic evaluation, Hollywood does those things.
- Balanced across the board for EPDs he puts 13 traits in the top 30% of the breed while promoting growth and marbling at a very high level.
- There is not enough space to talk about his becoming famous dam Electra. If you pay attention to elite red genetics, you know exactly what she has done.
- Hollywood just sired the top selling bull at Mushrush's, Mushrush Red Rush!



Mushrush Red Rush, son of Hollywood



PB SIMMENTAL

	DIRECT					MATERNAL					CARCASS				S INDEX	
	CE	BW	VV	YW	ADG	MCE	MILK	MWW	STAY	DOC	CW	YG	MARB	REA	API	TI
EPD	13.2	-1.0	90.6	150.3	0.37	7.9	24.6	69.8	18.4	11.3	45.9	-0.20	0.58	0.85	174.8	101.4
ACC	0.54	0.67	0.64	0.65	0.65	0.29	0.25	0.35	0.33	0.22	0.50	0.36	0.47	0.42	-	-
RANK	30	15	15	4	2	20	40	20	20	55	10	99	5	55	4	3

HOOK'S RED ZONE 79Z
 SIRE: HOOK'S EMPIRE 61E
 HOOKS ZAREBA 40Z

CDI VERDICT 220Y
 DAM: WS ELECTRA E88
 HSF MISS SKY 87U



SEMEN \$25

Contact Allied to order semen.

ORigen **ALLIED**
 GENETIC RESOURCES

KBHR ALL AMERICAN G104



Red, Homozygous Polled || PB SM
 ASA# 3618723 DOB: 3/24/2019 Tattoo: G104

Owned by:
 All Beef LLC || Bar Open A Ranch || Keller Broken Heart Ranch

- It is time to give this powerhouse Red bull another look if you want the performance, structure, body volume and maternal prowess he is proving to have.
- All American just might be the physically most ideal red bull you can make, especially as a true performance bull.
- Daughters too are fabulous with excellent fertility and no reports of the challenges experienced by All Aboard daughters with a large number of daughters now having their second calves.
- Tremendous and wholly complementary choice for Red Angus females!



Son from Keller Broken Heart 2022



High selling son of All American from KBHR

EPD	DIRECT					MATERNAL					CARCASS				S INDEX	
	CE	BW	WW	YW	ADG	MCE	MILK	MWW	STAY	DOC	CW	YG	MARB	REA	API	TI
8.2	4.4	100.0	155.2	0.34	7.3	25.1	75.1	7.5	16.3	33.0	-0.64	0.47	1.20	135.5	98.8	
0.67	0.86	0.83	0.82	0.82	0.47	0.36	0.47	0.40	0.67	0.65	0.48	0.60	0.58	-	-	
90	99	3	3	10	30	35	10	99	10	35	1	15	5	45	5	

SEMEN \$30

Contact Allied to order semen.



WS ALL-AROUND Z35
 SIRE: WS ALL ABOARD B80
 WS LITTLE SISTER W37

GW REDESTINED 642X
 DAM: KBHR C078
 KBHR U122



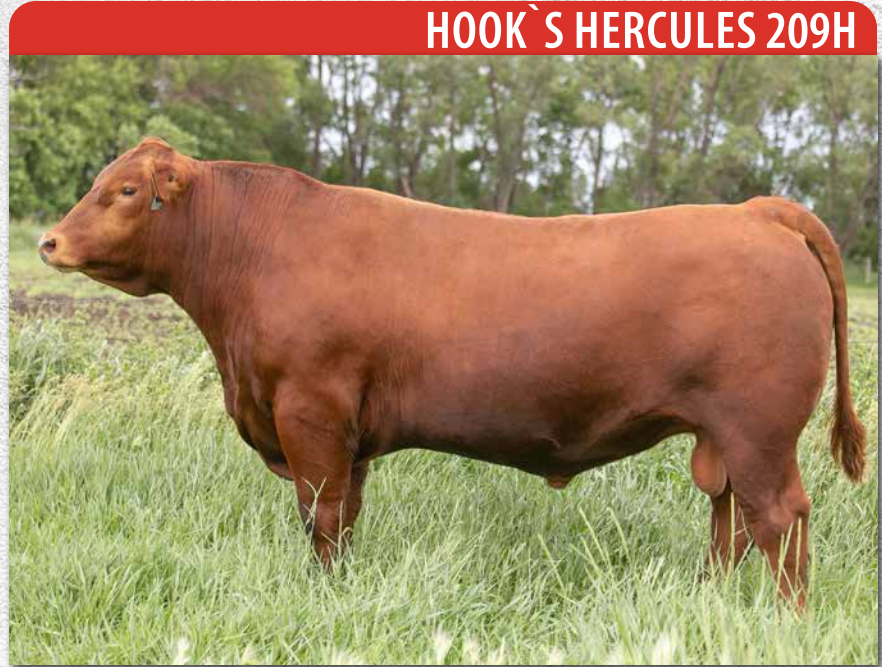
Red, Homozygous Polled || PB SM
 ASA# 3715245 DOB: 2/18/2020 Tattoo: 209H

Owned by:
 Hook Farms || One Penny Ranch || 7P Ranch

- Dark red calving ease sire prospect exhibiting tremendous type and maternal potential.
- Beautiful, calm-dispositioned Prime Time-sired dam was an outstanding member of the Bred for Balance Fab 5 in 2018.
- Next step" red generation excelling for Direct calving ease, Stayability, hoof quality and \$ Profit Index values.
- Heifer safe "ACE" designation through genomic evaluation by Top Genomics, LLC.



Dam of Hercules



HOOK'S HERCULES 209H

PB SIMMENTAL

	DIRECT					MATERNAL					CARCASS				S INDEX	
	CE	BW	VV	YW	ADG	MCE	MILK	MWW	STAY	DOC	CW	YG	MARB	REA	API	TI
EPD	12.0	1.0	93.0	145.4	0.33	6.5	19.4	65.8	22.2	14.2	49.7	-0.25	0.55	1.02	175.5	98.9
ACC	0.56	0.65	0.57	0.58	0.58	0.32	0.24	0.35	0.37	0.49	0.48	0.37	0.45	0.44	-	-
BLVD	45	45	10	10	10	40	80	35	2	25	4	95	10	20	3	5

IR IMPERIAL B772
 SIRE: IR IMPERIAL D948
 IR MS DUAL FOCUS W086

WS PRIME TIME B6
 DAM: CLRS ELATED 729E
 CLRS CRIMSON 516 C



SEMEN \$25

Contact Allied to order semen.

ORigen **ALLIED**
 GENETIC RESOURCES

HSF CARDINAL 133G



Red, Homozygous Polled || PB SM
 ASA# 3749672 DOB: 9/17/2019 Tattoo: 133G

Owned by:
 All Beef LLC || Hofmann Simmental Farms || Rymo Cattle Company

- Balanced in all things, Cardinal sires exceptional phenotype and some of the nicest red females you will find.
- Big time outcross, but awesome reputation maternal pedigree on the dam side. ER Big Sky x Hook's Red Quorum x SRS Fortune 500.
- Solid calving ease like his sire, but with substantially more growth, size and length.
- Calves are darker red in color and the docility is excellent!



Cardinal daughter at Franzen Simmentals



Cardinal son at Eichacker Simmentals

	DIRECT					MATERNAL					CARCASS				S INDEX	
	CE	BW	WW	YW	ADG	MCE	MILK	MWW	STAY	DOC	CW	YG	MARB	REA	API	TI
EPD	14.5	-0.8	78.8	120.4	0.26	8.5	21.0	60.3	17.8	17.7	14.7	-0.43	0.32	1.08	154.9	87.6
KC	0.67	0.81	0.77	0.76	0.76	0.35	0.27	0.39	0.42	0.53	0.54	0.41	0.50	0.50	-	-
MM	15	15	50	40	40	15	70	60	25	3	95	35	25	15	20	25

SEMEN \$30

Contact Allied to order semen.



IR IMPERIAL B772
 SIRE: IR IMPERIAL D948
 IR MS DUAL FOCUS W086

ER BIG SKY 545B
 DAM: HSF MISS SKY 595 64Z
 HSF FORTUNATAS QUO 59S

ALLIED GENETIC RESOURCES **ORigen**

Red, Homozygous Polled || PB SM
 ASA# 3764686 DOB: 1/27/2020 Tattoo: 20H

Owned by:
Diamond H Ranch || Wilkinson Farms

- Purebred herdsire at Diamond H Ranch, who just sired a group of sale features
- 38 Special daughters were offered for the first time at Diamond H, and boy were they a hit!
- With 9 EPD traits in the top 35% of the database, 38 Special is a great red Purebred choice for genetic advancement



38 Special son at Diamond H Ranch



38 Special son at Diamond H Ranch



WS 38 SPECIAL 20H

PB SIMMENTAL

	DIRECT					MATERNAL					CARCASS				S INDEX	
	CE	BW	VW	YW	ADG	MCE	MILK	MWW	STAY	DOC	CW	YG	MARB	REA	API	TI
EPD	12.3	0.3	79.2	130.7	0.32	7.9	27.4	66.9	16.7	8.2	47.2	-0.30	0.26	0.94	145.9	85.5
ACC	0.59	0.70	0.65	0.66	0.66	0.31	0.20	0.33	0.34	0.42	0.50	0.38	0.47	0.45	-	-
RANK	40	35	45	25	10	20	20	30	40	85	10	85	35	35	30	35

TJ DIPLOMAT 294D
 SIRE: HOOK'S FULL FIGURES 11F
 HOOK'S DOCILA 23D

WS PRIME TIME B6
 DAM: WS KILLING TIME E38
 WS HONEY BEE C81



SEMEN \$30

Contact Allied to order semen.

ORigen **ALLIED**
 GENETIC RESOURCES

REDHILL BURLEY 99J



Red, Homozygous Polled || PB SM
 ASA# 3953952 DOB: 1/18/2021 Tattoo: 99J

Owned by:
 All Beef LLC || Genex || JC Simmentals || Redhill Farms

- 99J is flat getting it done in the red genetics world with a slightly different pedigree and tremendous calves!
- Progeny are wonderfully muscular, have great feet and structure and are very pleasing to the eye.
- Burley is one of the very few bulls ever to rank above breed average for every single trait listed by ASA and is in the top 25% for 11 of them.
- You can simply use him on every red cow you have, and he is working great on Red Angus females as well.

EPD	DIRECT					MATERNAL					CARCASS				S INDEX	
	CE	BW	WW	YW	ADG	MCE	MILK	MWW	STAY	DOC	CW	YG	MARB	REA	API	TI
	14.4	-0.1	85.4	127.4	0.26	7.2	28.2	70.8	20.4	13.2	32.9	-0.43	0.46	1.10	168.5	94.9
RMK	0.57	0.65	0.62	0.60	0.60	0.32	0.24	0.34	0.36	0.51	0.51	0.38	0.45	0.45	-	-
KC	15	25	25	30	40	30	15	15	5	35	35	35	15	15	10	10

SEMEN \$30

Contact Allied to order semen.



CDI VERDICT 220Y
 SIRE: CDI SECRET AGENT 407C
 CDI MS BEEF KING 43A

WS BEEF MAKER R13
 DAM: REDHILL W107 153X 257B
 REDHILL 701T 219K 153X



Burley son at GLBC



Red, Homozygous Polled || PB SM
 ASA# 3957014 DOB: 1/20/2021 Tattoo: J15

Owned by:
 Schnabel Ranch || Cody Pitt

- The total outcross purebred red heifer bull everyone has been looking for
- Out of the popular Lover Boy bull, and out of a wonderful, moderate easy fleshing cow that originated from Altenburg Super Baldy Ranch.
- J15 has one of the best EPD profiles of all the sons of Lover Boy
- First calves avg 70# BW on virgin heifers with tons of vigor
- Justin Time has been siring some nice baldy calves as he has a couple small white spots on his face



PITTS JUSTIN TIME J15

PB SIMMENTAL

	DIRECT					MATERNAL					CARCASS				S INDEX	
	CE	BW	WW	YW	ADG	MCE	MILK	MWW	STAY	DOC	CW	YG	MARB	REA	API	TI
EPD	18.0	-2.0	73.3	111.3	0.24	10.2	26.1	62.7	17.1	14.9	19.0	-0.48	0.46	0.93	165.8	90.4
ACC	0.55	0.61	0.57	0.56	0.56	0.28	0.24	0.34	0.36	0.44	0.46	0.36	0.42	0.44	-	-
RANK	2	10	70	65	55	4	30	50	35	15	85	15	15	40	10	20

HTP/SVF DURACELL T52
 SIRE: THSF LOVER BOY B33
 RP/MP RIGHT TO LOVE 015U

REDHILL 823Y 14S 213B
 DAM: ASR MS JACKIE F853
 ASR MS JACKIE B496



SEMEN \$30

Contact Allied to order semen.

ORigen **ALLIED**
 GENETIC RESOURCES

WS FULL PAY 68K

Red, Homozygous Polled || PB SM
 ASA# 4070841 DOB: 2/21/2022 Tattoo: 68K

Owned by:
 Schnabel Ranch || Wilkinson Farms Simmentals



- An absolute winning combination outcross purebred red pedigree
- Elite EPD profile
- Extremely docile dark cherry red that will calve easy and add pounds, rib shape, and style
- Carries the G+ and ATM badges from Top Genomics

EPD	DIRECT					MATERNAL				CARCASS				S INDEX		
	CE	BW	WW	YW	ADG	MCE	MILK	MWW	STAY	DOC	CW	YG	MARB	REA	API	TI
	12.2	-1.4	92.8	140.8	0.30	8.6	22.4	68.7	16.5	12.3	24.9	-0.43	0.46	1.21	163.8	100.3
RMK	0.43	0.47	0.48	0.49	0.49	0.28	0.22	0.30	0.35	0.43	0.44	0.36	0.44	0.42	-	-
KC	40	10	10	10	20	15	60	25	40	45	60	35	15	4	10	4

SEMEN \$30

Contact Allied to order semen.



TJ DIPLOMAT 294D
 SIRE: HOOK'S FULL FIGURES 11F
 HOOK'S DOCILA 23D

CDI AMBITION 255C
 DAM: WS PAY IT FORWARD G64
 WS MOVING FORWARD D174



Sire of Full Pay



Red, Homozygous Polled || PB SM
 ASA# 3924458 DOB: 1/21/2021 Tattoo: J239

Owned by:
 All Beef LLC || J/C Simmental || Klein Ranch

- There will probably never be a photo taken of this bull because he remains hurt though still breeding cows!
- The good news is that his calves are going to do the talking and picturing for him.
- Vigorous, fast-growing progeny are being reported everywhere with the kind of genetic values everyone needs to be competitive.
- Moab is extremely unique too in that he is a nearly 7 frame son of IR Imperial that literally took over the 2023 Michigan bull test against all breeds for all traits including growth, REA and marbling.

RR5-MR MOAB J239

\$API 195.8
\$TI 109.6

	DIRECT					MATERNAL					CARCASS				S INDEX	
	CE	BW	WW	YW	ADG	MCE	MILK	MWW	STAY	DOC	CW	YG	MARB	REA	API	TI
EPD	11.7	-0.3	84.5	132.3	0.30	7.7	21.4	63.5	17.6	14.8	45.5	-0.28	1.11	1.10	195.8	109.6
ACC	0.45	0.47	0.43	0.44	0.44	0.28	0.24	0.30	0.36	0.45	0.42	0.34	0.42	0.40	-	-
RANK	50	25	30	20	20	25	65	45	30	20	10	90	1	15	1	1

IR IMPERIAL B772
 SIRE: IR IMPERIAL D948
 IR MS DUAL FOCUS W086

CDI ABUNDANCE 391C
 DAM: LCDR MS EMBER 724E
 KBHR CHERRY C086



SEMEN \$25

Contact Allied to order semen.



ES JACK RED LG11



Red, Homozygous Polled || PB SM

ASA# 4257936

DOB: 3/12/2023

Tattoo: LG11

Owned by:

All Beef LLC || Kellers Broken Heart Ranch || Eichacker Simmentals

- Attractive, no holes, Purebred, outcross and top selling red in the 2024 Eichacker Simmental sale.
- Near perfect feet, great disposition, deep sided, thick ended and wonderful for balance and performance.
- Measured just over a 6 frame and dark red in color.
- Jack Red is poised to be the outcross, maternal answer with 14 traits in the top 1/3 of the breed and 5 values in the top 5% rankings.

EPD	DIRECT					MATERNAL					CARCASS				S INDEX	
	CE	BW	WW	YW	ADG	MCE	MILK	MWW	STAY	DOC	CW	YG	MARB	REA	API	TI
17.8	-2.0	81.9	127.8	0.29	10.4	28.9	69.8	18.5	15.3	33.8	-0.21	0.64	0.78	181.0	99.4	
0.45	0.49	0.47	0.47	0.47	0.22	0.16	0.26	0.30	0.39	0.39	0.31	0.34	0.36	-	-	
3	10	35	30	25	3	15	20	20	15	30	99	4	70	2	4	

SEMEN \$30

Contact Allied to order semen.



HOOK'S FULL FIGURES 11F
SIRE: FIVE STAR JACKSON J10
KBHR F316

GW MAJOR MOVE 590E
DAM: ES G11
ES E18



Sire of Jack Red

ALLIED ORigen
GENETIC RESOURCES

Red, Homozygous Polled || PB SM
 ASA# 4231690 DOB: 1/10/2023 Tattoo: 4L

Owned by:
 Schnabel Ranch Simmentals || Wilkinson Farms

- Red power bull with tremendous outcross capabilities!
- 6.5 plus frame, a mile long with exceptional thickness of top and quarter.
- Sired by 3C Harmony and out of a daughter of WS Sugar C4. Very different red pedigree.
- Almost +150 (top 5%) for YW with top 10% MB, REA and Doc. EPD.



WS LEGEND 4L

PB SIMMENTAL

	DIRECT					MATERNAL					CARCASS				S INDEX	
	CE	BW	WW	YW	ADG	MCE	MILK	MWW	STAY	DOC	CW	YG	MARB	REA	API	TI
EPD	11.7	1.4	91.4	149.2	0.36	7.7	26.1	71.7	15.6	16.3	46.3	-0.38	0.53	1.11	161.2	98.5
ACC	0.41	0.45	0.48	0.48	0.48	0.23	0.15	0.24	0.33	0.38	0.41	0.32	0.41	0.38	-	-
RANK	50	55	15	5	3	25	30	15	50	10	10	55	10	10	15	5

KBHR HIGH ROAD E283
 SIRE: 3C HARMONY 0575H B
 3C CROCUS 3427A BWF

HOOK'S FULL FIGURES 11F
 DAM: WS MISS HONEY H72
 WS ANISE A71



SEMEN \$30

Contact Allied to order semen.

ORigen **ALLIED**
 GENETIC RESOURCES

GW HILGER ONE 454H

Red, Homozygous Polled || 3/4 SM 3/16 AN 1/16 AR
 ASA# 3701575 DOB: 2/29/2020 Tattoo: 454H

Owned by:
 Select Sires || Klein Ranch || All Beef LLC || Gateway Simmental



- Explosive growth coupled with a legacy of female producing genetics.
- Over 100 for WW EPD with a wonderful array in the maternal complex. 4% MWW, 5% STAY, 4%.
- Use Hilger One to generate the next generation of high value red genetics.
- Calves grow like crazy post weaning and end up with great thickness, balance and marketability.



Hilger One daughter at Klein Ranch



Hilger One son from Bulls of the Big Sky

3/4 SIMMENTAL

EPD	DIRECT					MATERNAL					CARCASS				S INDEX	
	CE	BW	WW	YW	ADG	MCE	MILK	MWW	STAY	DOC	CW	YG	MARB	REA	API	TI
	11.2	0.0	101.2	157.1	0.35	4.7	26.2	76.7	19.8	18.0	60.1	-0.22	0.42	0.90	156.0	97.7
RMV, KC	0.71	0.86	0.80	0.80	0.80	0.34	0.28	0.40	0.38	0.67	0.57	0.43	0.57	0.54	-	-
	70	50	2	3	10	85	35	4	10	4	3	50	45	20	20	5

SEMEN \$30

Contact Allied to order semen.



GW PREMIUM BEEF 021TS
 SIRE: GW MOVIN ON 183C
 GW MISS PREDESTINED 117Y



GW YUKON JACK 612B
 DAM: GW MISS YUKON JACK 913E
 GW MISS REDESTINED 333A



Red, Homozygous Polled || 3/4 SM 1/4 AR
 ASA# 3893318 DOB: 3/14/2021 Tattoo: 1231J

Owned by:
All Beef LLC || Kellers Broken Heart Ranch

- 1231J might be the most outcross Red bull in the breed with the capability to sire unique pedigreed Purebred Reds for the future. Just check out his pedigree.
- Tremendous STAY at +23 highlights his balanced array of EPDs.
- Moderate for size, deep sided and easy fleshing, he will be a female maker.



2 year old pasture picture of Heart to Heart



3/4 SIMMENTAL

	DIRECT					MATERNAL					CARCASS				S INDEX	
	CE	BW	VV	YW	ADG	MCE	MILK	MWW	STAY	DOC	CW	YG	MARB	REA	API	TI
EPD	13.7	0.4	76.0	117.4	0.26	7.1	27.1	65.0	23.1	7.7	41.2	-0.21	0.48	0.73	157.7	83.8
ACC	0.52	0.60	0.55	0.54	0.54	0.25	0.17	0.28	0.31	0.41	0.42	0.31	0.36	0.36	-	-
RANK	40	60	50	50	55	50	25	35	1	95	30	55	35	45	15	40

HOOK'S EAGLE 6E
 SIRE: J-J EAGLE ROCK 920G
 GW MISS LUCKY CHARM 745U

KCC PINNACLE 949-109
 DAM: RYMO MISS PINNACLE A52B
 RYMO SHEZA MAKER N51Z



SEMEN \$25

Contact Allied to order semen.

ORigen **ALLIED**
 GENETIC RESOURCES

MUSHRUSH RED RUSH K707



Red, Homozygous Polled || 1/2 SM 1/2 AR
 ASA# 4321928 DOB: 9/18/2022 Tattoo: K707

Owned by:
 Mushrush Red Angus || Anderson Land and Cattle Inc || All Beef LLC

- Went looking for a great, red SimAngus heifer bull, found him and got a whole lot more!
- Feed to gain ratio of 5.1 to 1 the 5th best out of a 133 head contemporary group (15% better).
- K707 knocked it out of the park for performance and Feed Efficiency as well. Ratios: 119 WW, 120 YW, 122 ADG, 102 IMF, 121 REA.
- Very unique pedigree to add to the Red population, he offers the best of both breeds with generations of calving ease and maternal red genetics.
- Absolutely massive bodied and as thick as you can make one.

CE	BW	DIRECT			ADG	MATERNAL				CARCASS				S INDEX	
		WW	YW	MCE		MILK	MWW	STAY	DOC	CW	YG	MARB	REA	API	TI
15.9	-4.5	76.7	132.4	0.35	7.9	25.2	63.5	18.9	10.3	22.0	0.07	0.62	0.15	166.2	91.6
0.42	0.48	0.46	0.47	0.47	0.20	0.20	0.25	0.29	0.07	0.37	0.29	0.37	0.35	-	-
20	3	50	25	10	35	40	45	10	80	85	99	20	99	10	15

SEMEN \$30

Contact Allied to order semen.



HOOK'S EMPIRE 61E
 SIRE: WS HOLLYWOOD 79H
 WS ELECTRA E88

BECKTON ACCENT Y312 N3
 DAM: MUSHRUSH PRIMROSE F696
 MUSHRUSH PRIMROSE NB C608



Sire of Red Rush

Red, Homozygous Polled || 5/8 SM 9/32 AN 3/32 AR
 ASA# 3874301 DOB: 2/21/2021 Tattoo: CLRS 951J

Owned by:
 All Beef LLC || Clear Springs

- Jefferson brings a unique pedigree to the Red population with a great maternal pedigree.
- Balanced performance with a clean fronted, clean sheathed look.
- Tremendous EPDs for STAY and Docility too. Expect easy keeping, moderate sized and productive daughters.



CLRS 961J, Full Brother to Jefferson



	DIRECT					MATERNAL					CARCASS				S INDEX	
	CE	BW	VV	YW	ADG	MCE	MILK	MWW	STAY	DOC	CW	YG	MARB	REA	API	TI
EPD	9.9	2.8	75.9	118.5	0.27	4.4	27.3	64.9	22.0	21.1	32.4	-0.29	0.66	0.47	156.3	85.0
ACC	0.62	0.77	0.69	0.67	0.67	0.32	0.25	0.35	0.35	0.53	0.49	0.38	0.45	0.46	-	-
RANK	85	95	50	50	50	90	25	40	1	1	55	30	15	85	20	35

CDI VERDICT 220Y
 SIRE: LEACHMAN DECREE X936D
 REMPE BENTLEY BL010

HOOK'S DELEGATE 64D
 DAM: M4 MS DESIRE 911G
 M4 MS IMPULSE E6Z



SEMEN \$30

Contact Allied to order semen.



GW MAJOR MOVE 590E



Red, Homozygous Polled || 5/8 SM 1/4 AN 1/8 AR
 ASA# 3242835 DOB: 3/7/2017 Tattoo: 590E

Owned by:
 All Beef LLC || Gateway Simmental || Finke Simmentals

- Major Move is the grand old man of making great red daughters.
- Deep sided, great structured, easy keeping females that wean really big calves are his legacy.
- He is still breeding cows at age 7 and looks better than the day he was purchased.
- Wonderful disposition is another of his prepotent traits and an important one!
- Great choice for adding growth and muscling as well.



Major Move Son at Eichacker Simmentals



Major Move daughter

EPD	DIRECT					MATERNAL					CARCASS				S INDEX	
	CE	BW	WW	YW	ADG	MCE	MILK	MWW	STAY	DOC	CW	YG	MARB	REA	API	TI
8.7	0.5	88.8	137.5	0.30	3.7	29.8	74.1	16.5	17.6	17.6	41.3	-0.32	0.34	1.15	135.8	87.8
0.68	0.88	0.84	0.85	0.85	0.61	0.65	0.72	0.48	0.72	0.64	0.48	0.59	0.58	-	-	
95	60	15	15	30	95	15	10	30	10	25	25	55	3	50	30	

SEMEN \$20

Contact Allied to order semen.



SIRE: GW PREMIUM BEEF 021TS
 GW MOVIN ON 183C
 GW MISS PREDESTINED 117Y

DAM: GW PREDESTINED 701T
 GW MISS PREDESTINED 147Y
 GW MISS RED COAT 523T

ALLIED ORigen
 GENETIC RESOURCES

Homozygous Black, Homozygous Polled || 5/8 SM 3/8 AN
 ASA# 2954741 DOB: 2/12/2015 Tattoo: 018C

Owned by:
 Gibbs Farms || Gateway Simmentals

- The tried-and-true genetic superstar that has continuously produced cattle that perform in any operation or environment.
- A true spread bull that sires calves that come easy and grow off heavy calves at weaning time.
- PROVEN genomic giant of the breed with an unmatched CE to BW to YW spread. A bull that also improves disposition and foot quality.



Triple Crown son



Triple Crown son

YW spread. A bull that also improves disposition and foot quality.

GW TRIPLE CROWN 018C



	DIRECT					MATERNAL					CARCASS				S INDEX	
	CE	BW	WW	YW	ADG	MCE	MILK	MWW	STAY	DOC	CW	YG	MARB	REA	API	TI
EPD	14.9	-2.0	88.7	148.7	0.38	10.2	18.4	62.7	15.5	22.9	63.3	-0.34	0.72	1.28	169.9	101.1
ACC	0.81	0.92	0.90	0.90	0.90	0.70	0.72	0.76	0.59	0.84	0.78	0.59	0.76	0.76	-	-
RANK	25	20	15	10	3	10	90	50	45	1	2	20	10	1	10	2

GW PREMIUM BEEF 021TS
 SIRE: J BAR J NIGHTRIDE 225Z
 J BAR J MISS ND 793X

GW PREDESTINED 701T
 DAM: GW MISS GPRD 359A
 GW MISS PREM BEEF 240Y



SEMEN \$20

Contact Allied to order semen.

ORigen **ALLIED**
 GENETIC RESOURCES

SOUTHERN FORTUNE TELLER

Homozygous Black, Homozygous Polled || 1/2 SM 1/2 AN
 ASA# 3382993 DOB: 12/20/2017 Tattoo: 1424E

Owned by:
 All Beef LLC || Genex



- Fortune Teller just makes good ones! You can use him on just about any cow and make a better one.
- Long sided, sound structured cattle with extra middle and a great, square look from the side. Marketing bulls and females sired by Fortune Teller is easy to do.
- Great choice for heifers as well and you will get a lot more calf than with most other choices.
- He too offers an outcross pedigree with tremendous values for Marbling and Ribeye.



GW Medicine Man 200K, son from Gateway Simmentals



Lead off bull and top seller at GLBC

DIRECT					MATERNAL					CARCASS					S INDEX	
CE	BW	WW	YW	ADG	MCE	MILK	MWW	STAY	DOC	CW	YG	MARB	REA	API	TI	
16.4	-3.9	77.2	128.4	0.32	6.0	22.1	60.6	9.0	13.9	52.9	-0.18	0.94	0.96	168.2	101.4	
0.72	0.88	0.83	0.84	0.84	0.48	0.47	0.56	0.46	0.68	0.71	0.54	0.70	0.67	-	-	
15	5	45	30	20	65	70	60	95	30	10	65	2	15	10	2	

SEMEN \$25

Contact Allied to order semen.



HOOKS TRINITY 9T
 SIRE: LEACHMAN PROPHET J030Z
 LCOC ISABEL UG390

GW PREMIUM BEEF 021TS
 DAM: GW MISS PREM BEEF 246Z
 GW MISS GPRD 226W



Homozygous Black, Homozygous Polled || 5/8 SM 3/8 AN
 ASA# 3555669 DOB: 2/12/2019 Tattoo: JC403G

JC MR TALON 403G

Owned by:
 J/C Simmental || Salinas Farms || Advanced Beef Genetics || All Beef LLC

- Commercial cattlemen and seedstock producers alike need to seriously consider Talon in 2024 because he is the very definition of practical and balanced.
- Talon will calve to any heifer anywhere, but will still produce dense made, thick, easy doing calves that grow well and never have a bad



Talon daughter at Advanced Beef Genetics



Talon daughter, GLBC

- day. So far he has successfully calved to more than 1,000 heifers.
- His first daughters too are exceptional. Moderate framed, low input and ultimately quiet-natured, they have wonderful udder structure and teat size.
- Talon even hits a lick on the carcass side with big Ribeye improvement and Marbling potential.



	DIRECT					MATERNAL				CARCASS				S INDEX		
	CE	BW	VV	YW	ADG	MCE	MILK	MWW	STAY	DOC	CW	YG	MARB	REA	API	TI
EPD	19.3	-6.3	71.6	112.1	0.25	12.4	19.5	55.3	19.5	20.4	29.4	-0.30	0.55	1.13	172.5	91.1
ACC	0.71	0.81	0.76	0.77	0.77	0.45	0.36	0.46	0.41	0.66	0.60	0.47	0.57	0.55	-	-
RANK	3	1	70	65	60	2	85	80	10	1	65	30	25	3	5	20

SIRE: HOOK'S BLACK HAWK 50B
 HOOK'S EAGLE 6E
 HOOK'S CRYSTAL 1C

DAM: HOOKS SHEAR FORCE 38K
 JC MS FORCE 403B
 RAY BLACKCAP 5229



SEMEN \$25

Contact Allied to order semen.

ORigen **ALLIED**
 GENETIC RESOURCES

SCHOOLEY HAGGARD A411H

Homozygous Black, Homozygous Polled || 1/2 SM 1/2 AN
 ASA# 3752744 DOB: 2/26/2020 Tattoo: A411H

Owned by:
 River Creek Farms || Schooley Cattle



- Schooley Haggard has proved his ability to transmit elite marbling, CE and phenotype along to his progeny. While adding more growth than his sire
- Haggards dam continues to impress with her ability to work on any sire to make growthy herd sires, as well as passing on her maternal feet, legs, and udder improvement to her daughters.
- Use Haggard on those females that are big stout, high growth, needing calving ease, and IMF and you will love em!



Dam of Haggard



Sire of Haggard

BUNK K.C. EPD	DIRECT					MATERNAL					CARCASS				S INDEX	
	CE	BW	WW	YW	ADG	MCE	MILK	MWW	STAY	DOC	CW	YG	MARB	REA	API	TI
	16.6	-2.2	91.0	141.8	0.32	7.7	29.0	73.9	16.3	14.0	53.9	-0.04	1.26	0.70	200.3	115.0
	0.60	0.70	0.66	0.67	0.67	0.33	0.22	0.33	0.34	0.58	0.51	0.38	0.47	0.45	-	-
	15	20	10	10	20	40	15	10	35	30	10	95	1	50	1	1

SEMEN \$40

Contact Allied to order semen.



G A R SURE FIRE
 SIRE: EGL FIRESTEEL 103F
 TJ 22X

G A R PROPHET
 DAM: SCHOOLEY MISS 3000A 823F
 CCR MS SINGLETARY 3000A

ALLIED ORigen
 GENETIC RESOURCES

Homozygous Black, Homozygous Polled || 1/2 SM 1/2 AN
 ASA# 3271380 DOB: 2/4/2017 Tattoo: E744

Owned by:
Bridle Bit Simmental || Hook Farms

- Progeny records have powered Eclipse to “rare air” when considering BW to YW spread, maternal traits, and \$ Index values relative to his SimGenetic peers.
- Posted impressive individual feed conversion data and is transmitting this efficiency to his offspring as verified by Eagle Pass Ranch and



Lot 1 at Bridle Bit Simmental, Eclipse son



Hook's Galileo, Eclipse son

Bridle Bit Ranch progeny feed intake trials.

- Soft-structured and good footed, Eclipse possesses extra length and great type.
- Unique pedigree offers unlimited mating options and genetic progress for many of the high use Simmental and SimAngus bloodlines



	DIRECT					MATERNAL					CARCASS				S INDEX	
	CE	BW	VW	YW	ADG	MCE	MILK	MWW	STAY	DOC	CW	YG	MARB	REA	API	TI
EPD	23.3	-6.5	76.6	125.8	0.31	11.9	29.3	67.6	18.8	18.3	27.9	0.04	0.81	-0.08	192.6	101.1
ACC	0.78	0.88	0.85	0.85	0.85	0.59	0.56	0.64	0.40	0.78	0.68	0.52	0.68	0.64	-	-
RANK	1	1	50	35	25	2	15	25	10	4	70	99	5	99	1	2

CCR FRONTIER 0053Z
 SIRE: BRIDLE BIT CALVARY C503
 BRIDLE BIT MISS X058

BAR CK TEBOW 1006X
 DAM: BRIDLE BIT MISS A327
 BRIDLE BIT MISS Y183

BRIDLE BIT ECLIPSE E744



SEMEN \$25

Contact Allied to order semen.

ORigen **ALLIED**
 GENETIC RESOURCES

CCR BONAFIDE 5116F

Homozygous Black, Homozygous Polled || 1/2 SM 1/2 AN
 ASA# 3564556 DOB: 8/30/2018 Tattoo: 5116F

Owned by:
 Cow Camp Ranch



- Order early with a limited supply of Bonafide semen available in 2024.
- Bonafide's demand and popularity grows with every calf crop and will make cattle with visual appeal, genetic excellence and strong marketability.
- 10 Bonafide sons headlined the 2024 Cow Camp Sale and averaged \$14,000.



Bonafide son from Cow Camp



Bonafide son from Cow Camp

CE	DIRECT				MATERNAL					CARCASS				S INDEX	
	BW	WW	YW	ADG	MCE	MILK	MWW	STAY	DOC	CW	YG	MARB	REA	API	TI
16.9	-2.0	91.1	142.9	0.32	13.1	28.1	74.0	15.0	21.3	54.6	-0.20	0.75	1.03	171.1	103.0
0.60	0.74	0.68	0.70	0.70	0.35	0.28	0.39	0.37	0.61	0.54	0.42	0.52	0.50	-	-
10	20	10	10	20	1	20	10	50	1	10	60	10	10	5	2

SEMEN \$50

Contact Allied to order semen.



SUMMITCREST COMPLETE 1P55
 SIRE: KM BROKEN BOW 002
 SUMMITCREST PRINCESS 0P12

TRIPLE C SINGLETARY S3H
 DAM: CCR MS SINGLETARY 2340Z
 CCR MS 2027 TIME 0306X



Homozygous Black, Homozygous Polled || 1/2 SM 1/2 AN
 ASA# 3437294 DOB: 1/22/2018 Tattoo: 2045F

Owned by:
Cow Camp Ranch

- A high use, high accuracy, SimAngus Bull who at 6 years of age is siring cattle at the front of production sells across the country.
- Consistency with no throw aways has become of the staple of Pounder sire groups whose progeny will be at the front of your calf crop year in and year out.



CCR Nationwide 4503J, Pounder son



CCR Cochise 4142H, Pounder son

- Extra length, breed leading growth, exceptional docility, and wonderful structure is what to expect in the Pounder sired cattle.
- If you want to reduce risk, take a strong look at this highly proven SimAngus bull.



CCR POUNDER 2045F

	DIRECT					MATERNAL					CARCASS				S INDEX	
	CE	BW	VV	YW	ADG	MCE	MILK	MWW	STAY	DOC	CW	YG	MARB	REA	API	TI
EPD	14.3	0.4	103.0	168.3	0.41	8.1	35.4	87.1	16.4	20.2	63.3	0.01	0.39	0.60	151.8	98.4
ACC	0.65	0.81	0.77	0.78	0.78	0.38	0.34	0.45	0.38	0.73	0.60	0.46	0.54	0.54	-	-
RANK	30	60	1	1	1	30	1	1	35	2	2	99	50	65	25	4

BASIN PAYWEIGHT 1682
 SIRE: CCR PAY DIRT 2340C
 CCR MS SINGLETARY 2340Z

CCR COWBOY CUT 5048Z
 DAM: CCR MS 707 COWBOY 4123B
 S D S PRINCESS 707T



SEMEN \$50

Contact Allied to order semen.

ORigen **ALLIED**
 GENETIC RESOURCES

CLRS HOMELAND 327H

Homozygous Black, Homozygous Polled || 5/8 SM 3/8 AN
 ASA# 3709222 DOB: 2/18/2020 Tattoo: CLRS 327H

Owned by:
 All Beef LLC || Black Summit Cattle Co || ABS Global || Clear Springs



- Homeland was one of the dominant sires of the 2024 spring sale season because the cattle are so powerful and attractive.
- His sons topped several sales, but his daughters are definitely where his long-term impact will be felt.
- These cattle are so easy on the eyes with extreme body and neck extension with a long, square hip design.
- His first daughters have near perfect udders, are extremely deep and easy fleshing, and make a picture of what you wish they all would look like.



Homeland daughter from Eichacker Simmentals



Homeland daughter at Black Summit

CE	DIRECT				MATERNAL				CARCASS				S INDEX		
	BW	WW	YW	ADG	MCE	MILK	MWW	STAY	DOC	CW	YG	MARB	REA	API	TI
10.4	0.6	88.4	140.7	0.33	6.8	19.3	63.4	20.9	9.8	32.9	-0.49	0.60	1.21	162.4	94.2
0.69	0.89	0.87	0.86	0.86	0.43	0.32	0.44	0.37	0.77	0.61	0.49	0.62	0.60	-	-
80	60	15	15	15	55	85	45	3	85	50	1	20	2	10	10

SEMEN \$30

Contact Allied to order semen.



GW STEP OUT 672X
 SIRE: REDHILL 672X X004 231A
 GW MISS PREM BEEF X004

MCM TOP GRADE 018X
 DAM: CLRS ALWAYS XCELLENT
 HOOK'S XCELLENCE 87X



Homozygous Black, Homozygous Polled || 5/8 SM 9/32 AN 3/32 AR
 ASA# 3877088 DOB: 3/1/2021 Tattoo: 555J

Owned by:

All Beef LLC || Fred Smith Company Ranch || Gateway Simmental

- This guy is simply a repeat customer bull. If you use him once, you will use him again primarily because the calves are so consistent and pleasing.
- Growth and maternal traits too are among those he excels at, with a WW EPD in the top 4% of all SimAngus and MWW in the top 2%.



Maternal brother to Jailbreak



GW Sparky, Senior herdsire at Gateway, and Jailbreak's sire

- The great GW Miss GPRD 038W is the anchor to his genetic value package.
- Expect deep sided, fast-growing progeny that are level and attractive with outstanding disposition.



	DIRECT					MATERNAL					CARCASS				S INDEX	
	CE	BW	WW	YW	ADG	MCE	MILK	MWW	STAY	DOC	CW	YG	MARB	REA	API	TI
EPD	14.5	-1.4	94.7	146.5	0.32	7.1	31.3	78.5	18.1	19.3	49.2	-0.17	0.55	0.72	163.2	99.3
ACC	0.67	0.82	0.77	0.77	0.77	0.34	0.26	0.38	0.39	0.48	0.51	0.39	0.51	0.42	-	-
RANK	30	25	4	10	20	50	10	2	15	2	15	70	25	45	10	4

GW MOVIN ON 183C
 SIRE: GW SPARKY 369E
 GW MISS CONQUEST 538C

GW PREDESTINED 701T
 DAM: GW MISS GPRD 038W
 GW MISS LUCKY ONE 736R



SEMEN \$30

Contact Allied to order semen.

ORigen **ALLIED**
 GENETIC RESOURCES

CCR BEDROCK 5171J

Homozygous Black, Homozygous Polled || 1/2 SM 1/2 AN
 ASA# 4028738 DOB: 9/9/2021 Tattoo: 5171J

Owned by:
 Gibbs Farms || ABS || ALL BEEF || Cow Camp Ranch



EPD	DIRECT					MATERNAL				CARCASS				S INDEX	
	CE	BW	WW	YW	ADG	MCE	MILK	MWW	STAY	DOC	CW	YG	MARB	REA	API
15.2	-1.3	86.5	143.7	0.36	9.4	27.4	71.0	15.9	9.3	55.7	-0.06	0.87	0.71	175.3	102.2
0.51	0.57	0.51	0.52	0.52	0.31	0.23	0.31	0.31	0.48	0.44	0.35	0.42	0.40	-	-
25	30	20	10	10	15	25	15	40	85	5	90	4	45	4	2

SEMEN \$30

Contact Allied to order semen.



S S NIAGARA Z29
 SIRE: TEHAMA PATRIARCH F028
 TEHAMA ELITE BLACKBIRD D826

CCR COWBOY CUT 5048Z
 DAM: CCR MS 2073 COWBOY 5171C
 CCR MS E-7-3 2073Z

- A genetic outlier who will supply a magnitude of value across the board all while receiving the ACE logo on the RightChoice genomic screening.
- Bedrock pedigree features some of the most proven genetics in the sired by the lead off bull for ABS Tehama Patriarch and is backed by CCR Cowboy Cut on the bottom side.
- Along with supplying a foundation of genetic advancement Bedrock will improve fleshing ability, hoof quality and scrotal size.
- Early calf reports have been overwhelmingly positive on Bedrock look for him to be a high use bull for years to come with high customer satisfaction.



Maternal brother to Bedrock



Dam of Bedrock

Homozygous Black, Homozygous Polled || 1/2 SM 1/2 AN
 ASA# 4029010 DOB: 9/7/2021 Tattoo: 8081J

Owned by:

Cow Camp Ranch || Gibbs Farms || Trauernicht Simmentals

- Firepower combines the striking phenotype of his sire EGL Firesteel while being one of the highest growth heaviest muscled sons of Firesteel to date.
- If you are looking to inject growth and terminal traits Fire Power will be a must use bull this upcoming breeding season.
- Firepower combination of growth, marbling and ribeye area makes him a perfect choice for those in search of a bull to capture more end-product value.
- Early calf reports at Trauernicht Simmentals & Gibbs Farms are outstanding don't miss your opportunity to add some Fire Power to your next calf crop.



Sire of Fire Power



CCR FIRE POWER 8081J

	DIRECT					MATERNAL					CARCASS				S INDEX	
	CE	BW	WW	YW	ADG	MCE	MILK	MWW	STAY	DOC	CW	YG	MARB	REA	API	TI
EPD	11.7	1.2	92.9	148.0	0.34	1.9	27.2	72.4	18.1	11.5	57.1	-0.17	0.91	0.91	174.8	103.6
ACC	0.46	0.50	0.48	0.49	0.49	0.26	0.21	0.30	0.31	0.45	0.43	0.34	0.38	0.40	-	-
RANK	65	75	10	10	10	99	25	10	15	65	4	70	3	15	4	2

G A R SURE FIRE
 SIRE: EGL FIRESTEEL 103F
 TJ 22X

BALDRIDGE COMMAND C036
 DAM: CCR MS COMMAND 8081F
 CCR MS 2073 COWBOY 5171C



SEMEN \$30

Contact Allied to order semen.

ORigen **ALLIED**
 GENETIC RESOURCES

CCR NATIONWIDE 4503J



Homozygous Black, Homozygous Polled || 1/2 SM 1/2 AN
 ASA# 4028702 DOB: 9/15/2021 Tattoo: 4503J

Owned by:
 Cow Camp Ranch || Wildberry Farms

- Nationwide was the lead off bull of the highly popular CCR Pounder sons in the 2023 Cow Camp sale.
- He has a quiet demeanor with impeccable foot and leg structure. Extremely sound and athletic on the move with a big footed base.
- Nationwide's dam is an easy fleshing cow with exceptional udder quality that is backed by generations of strong uddered cows. She traces back to one of Cow Camp's top cow families that is loaded with maternal and carcass quality.
- He is well balanced throughout his EPDs with 12 different traits ranking in the top 20% of the breed.



Grandam of Nationwide



CCR Pounder 2045F, Sire of Nationwide

EPD	DIRECT					MATERNAL					CARCASS				S INDEX	
	CE	BW	WW	YW	ADG	MCE	MILK	MWW	STAY	DOC	CW	YG	MARB	REA	API	TI
	12.2	0.8	86.5	140.7	0.34	8.6	30.4	73.7	19.7	19.4	54.2	-0.05	0.65	0.64	162.5	93.7
BW/KC	0.46	0.54	0.53	0.53	0.53	0.25	0.30	0.39	0.32	0.45	0.42	0.34	0.39	0.41	-	-
60	65	20	15	10	25	10	10	10	2	10	95	15	60	10	15	

SEMEN \$30

Contact Allied to order semen.



CCR PAY DIRT 2340C
 SIRE: CCR POUNDER 2045F
 CCR MS 707 COWBOY 4123B

JC MR NATIONAL 610Y
 DAM: CCR MS NATIONAL 4503B
 CCR MS LUCY 2405Z



Homozygous Black, Homozygous Polled || 1/2 SM 1/2 AN
 ASA# 4028639 DOB: 9/1/2021 Tattoo: 3355J

Owned by:
 Cow Camp Ranch || Lassle Ranch Simmental

- Lassles used Anthem on heifers last breeding season with success!
- A first generation Simangus bull in which every cattleman could appreciate at the 2023 Cow Camp Bull Sale.
- Anthem was admired for his immense amount of rib shape, fleshing ability, and overall mass.
- Physically Anthem is a bull who checks all the boxes from a phenotype standpoint and genetically supplies ample growth, calving ease, and balanced terminal traits.
- Anthem's pedigree features some of the industry's greats in Tehama Patriarch and CCR Cowboy Cut.



Sire of Anthem



	DIRECT					MATERNAL					CARCASS				S INDEX	
	CE	BW	WW	YW	ADG	MCE	MILK	MWW	STAY	DOC	CW	YG	MARB	REA	API	TI
EPD	14.6	-1.2	82.1	129.3	0.30	11.2	29.5	70.6	18.0	16.4	34.1	-0.15	0.58	0.84	159.8	92.1
ACC	0.44	0.47	0.51	0.52	0.52	0.29	0.21	0.29	0.34	0.48	0.45	0.36	0.42	0.41	-	-
RANK	30	30	30	30	30	4	15	15	20	10	50	75	20	25	15	15

S S NIAGARA Z29
 SIRE: TEHAMA PATRIARCH F028
 TEHAMA ELITE BLACKBIRD D826



SEMEN \$30

Contact Allied to order semen.

CCR COWBOY CUT 5048Z
 DAM: CCR MS 5161 COWBOY 8636F
 CCR MS 9332 PHENOM 5161C

ORigen **ALLIED**
 GENETIC RESOURCES

SIMANGUS™

C-3 NEXT UP NS B220 J939

Homozygous Black, Homozygous Polled || 1/2 SM 1/2 AN
 ASA# 4038066 DOB: 8/27/2021 Tattoo: J939

Owned by:
 All Beef LLC || Gerloff Farms || Micheal Cole



- Outcross SimAngus genetics with unequaled profit producing potential.
- Attractive, structurally sound and thick made, he has grown into the massive herd sire that he had potential to be while breeding cows in an all-fescue environment.
- His total outcross dam already has 7 calves with an average weaning ratio of 106 even though her birth weight ratio is light at 97.
- Tremendous values for STAY, CE and Marbling push him well into the exclusive, profit focused +200 club for \$API.

SIMANGUS™

EPD	DIRECT					MATERNAL					CARCASS				S INDEX	
	CE	BW	WW	YW	ADG	MCE	MILK	MWW	STAY	DOC	CW	YG	MARB	REA	API	TI
17.5	-3.5	76.5	116.4	0.25	10.5	37.6	75.7	21.5	12.3	44.8	-0.07	1.15	0.57	202.4	106.2	
0.48	0.55	0.49	0.50	0.50	0.24	0.18	0.28	0.30	0.42	0.43	0.34	0.42	0.40	-	-	
10	10	50	55	60	10	1	5	2	55	20	90	1	70	1	1	

SEMEN \$30

Contact Allied to order semen.



BRIDLE BIT ECLIPSE E744
 SIRE: HOOK'S GALILEO 210G
 HOOK'S EVITA 18E

DIXON PRIME CUT NS Z209
 DAM: PDF BLK MALLORY B220
 PDF BLK MALLORY U532

ALLIED ORigen
 GENETIC RESOURCES

Homozygous Black, Homozygous Polled || 1/2 SM 1/2 AN
 ASA# 4124922 DOB: 10/16/2022 Tattoo: 9K

Owned by:
 All Beef LLC || Beach Cattle Co || Iron Creek Cattle

- Power, growth and exceptional marbling are the primary calling cards for this new SimAngus feature.
- -2 BW to +160 for YW with an ADG EPD of +.42 at printing should put this 6 plus frame power bull on your radar for improved down chain value creation.



Dam of Never Say Never



Sire Of Never Say Never

- His STAY is exceptionally high among first generation SimAngus, partially because of his highly maternal donor dam.
- +202 \$API and +115 \$TI at press time are truly special profit values.

IRON CREEK NEVER SAY NEVER 9



	DIRECT					MATERNAL					CARCASS				S INDEX	
	CE	BW	VW	YW	ADG	MCE	MILK	MWW	STAY	DOC	CW	YG	MARB	REA	API	TI
EPD	13.6	-1.9	94.5	160.7	0.41	8.7	27.0	74.5	18.3	10.9	77.0	0.00	1.20	0.94	200.8	115.6
ACC	0.44	0.45	0.45	0.43	0.43	0.25	0.16	0.24	0.29	0.43	0.39	0.33	0.40	0.37	-	-
RANK	40	20	5	2	1	25	25	10	15	70	1	99	1	15	1	1

POSS MAVERICK
 SIRE: POSS DEADWOOD
 POSS ELLUNAMERE 399

HOOK'S BEACON 56B
 DAM: KBHR MATRON OF HONOR F202
 BAR CK MS X38 106Z



SEMEN \$30

Contact Allied to order semen.

ORigen **ALLIED**
 GENETIC RESOURCES

GW MEDICINE MAN 200K

Homozygous Black, Homozygous Polled || 5/8 SM 3/8 AN
 ASA# 4033441 DOB: 1/28/2022 Tattoo: 200K

Owned by:
 All Beef LLC || Lyman Livestock || Triangle J Ranch



- He has all of the bells and whistles! G+ for balance and ACE certified for safe use on heifers.
- His outcross SimAngus pedigree allows for use on almost any current female line.
- A physical standout for performance, body dimension, thickness, look and ultimate balance.
- First calves are coming easy and have excellent vigor at Lyman Livestock in Utah.

SIMANGUS™

EPD	DIRECT					MATERNAL					CARCASS				S INDEX	
	CE	BW	WW	YW	ADG	MCE	MILK	MWW	STAY	DOC	CW	YG	MARB	REA	API	TI
18.7	-3.3	83.2	133.0	0.31	9.7	27.1	69.1	14.9	14.5	48.2	-0.27	0.89	0.91	181.1	103.9	
0.42	0.46	0.47	0.48	0.48	0.23	0.19	0.28	0.31	0.39	0.41	0.34	0.39	0.40	-	-	
4	10	25	20	25	15	25	20	50	25	15	35	3	15	2	1	

SEMEN \$30

Contact Allied to order semen.



LEACHMAN PROPHET J030Z
 SIRE: SOUTHERN FORTUNE TELLER
 GW MISS PREM BEEF 246Z

BAR CK PENDLETON 7028
 DAM: GW MISS PENDLETON 013H
 GW MISS JACKPOT 800F



Sire of Medicine Man

ALLIED GENETIC RESOURCES **ORigen**

Homozygous Black, Homozygous Polled || 1/2 SM 1/2 AN
 ASA# 3874349 DOB: 1/31/2021 Tattoo: CLRS7101J

Owned by:
 Trails End Cattle || Clear Springs Cattle

- No holes pedigree, balanced trait specialist and great looking!
- Home Town x Hook's Shear Force x GW Lucky One. Blends the best of both breeds and an old school, great maternal side.
- Expect great calving ease with excellent grow and nearly unrivaled carcass trait improvement.



Daughter of Justified at CLRS



Son from Mark Family Simmentals

- Every single carcass value is in the top 10% or higher.

CLRS JUSTIFIED 7101J



	DIRECT					MATERNAL					CARCASS				S INDEX	
	CE	BW	VV	YW	ADG	MCE	MILK	MWW	STAY	DOC	CW	YG	MARB	REA	API	TI
EPD	17.3	-0.6	85.4	132.5	0.29	10.5	23.6	66.8	13.7	18.9	52.0	-0.41	0.90	1.26	173.2	102.1
ACC	0.54	0.59	0.56	0.56	0.56	0.32	0.21	0.30	0.32	0.51	0.48	0.37	0.46	0.43	-	-
RANK	10	40	20	25	35	10	55	30	65	3	10	10	3	1	4	2

G A R ASHLAND
 SIRE: G A R HOME TOWN
 CHAIR ROCK SURE FIRE 6095

HOOKS SHEAR FORCE 38K
 DAM: K M J MS SFORCE E101
 CCR 602M L ONE 7116T



SEMEN \$30

Contact Allied to order semen.

ORigen **ALLIED**
 GENETIC RESOURCES

CLRS JERICHO 336J



Homozygous Black, Homozygous Polled || 5/8 SM 3/8 AN
 ASA# 3874215 DOB: 2/20/2021 Tattoo: CLRS 336J

Owned by:
 Eichacker Simmental || Clear Springs Cattle

- Excellent choice for a heifer bull, but also adds depth of body, thickness and look like most heifer bulls just don't do.
- Jericho's first progeny that sold at this year's Eichacker Simmental sale were a big hit among buyers.
- His dam, 316 has produced so many sale toppers, including CLRS Herdbook and CLRS Jolene.
- Top 2% for STAY and top 10% Marbling is a combination of traits that is difficult to find unless you use SimAngus and Simmental genetics.



Full sister to Jericho



Jericho son at Eichacker Simmentals

EPD	DIRECT					MATERNAL					CARCASS				S INDEX	
	CE	BW	WW	YW	ADG	MCE	MILK	MWW	STAY	DOC	CW	YG	MARB	REA	API	TI
16.5	-2.7	70.7	102.0	0.20	6.3	29.1	63.9	21.6	13.0	26.4	-0.31	0.74	0.68	175.5	91.4	
0.54	0.61	0.58	0.59	0.59	0.33	0.24	0.33	0.36	0.51	0.48	0.38	0.46	0.45	-	-	
15	15	70	80	90	60	15	40	2	45	75	25	10	50	4	15	

SEMEN \$30

Contact Allied to order semen.



G A R SURE FIRE
 SIRE: EGL FIRESTEEL 103F
 TJ 22X

MCM TOP GRADE 018X
 DAM: CLRS ALL XCELLENCE 316 A
 HOOK'S XCELLENCE 87X

ALLIED ORigen
 GENETIC RESOURCES

Homozygous Black, Homozygous Polled || 1/2 SM 1/2 AN
 ASA# 3873079 DOB: 9/23/2020 Tattoo: 4142H

Owned by:
 Cow Camp Ranch || Rydeen Farms

- Cochise displays balanced genetic excellence across the board his use and popularity grows with every calf crop.
- Cochise will sire highly marketable bulls who spread from birth to yearling is always in demand, maternally he ranks in the Top 1% for Stay and his females will be his lasting legacy.



Cochise daughter at Rydeen Farms



Cochise son at Rydeen Farms

- The Cochise sons were some of the most popular and highest selling sire groups at the very successful Rydeen and Cow Camp Ranch Bull sales in 2024
- The bottom side of the pedigree features one of the most proven producers CCR MS Catalyst 4142B dam of CCR Cochise, CCR Waco, and CCR El Dorado.



CCR COCHISE 4142H

EPD	DIRECT					MATERNAL					CARCASS				S INDEX	
	CE	BW	VW	YW	ADG	MCE	MILK	MWW	STAY	DOC	CW	YG	MARB	REA	API	TI
16.0	-2.1	80.2	136.3	0.35	8.4	32.0	72.1	23.6	13.2	48.9	0.02	0.55	0.52	172.8	91.6	
0.63	0.76	0.67	0.68	0.68	0.29	0.19	0.31	0.32	0.58	0.50	0.37	0.45	0.44	-	-	
15	20	35	20	10	30	5	10	1	40	15	99	25	80	4	15	

CCR PAY DIRT 2340C
 SIRE: CCR POUNDER 2045F
 CCR MS 707 COWBOY 4123B

CCR CATALYST 7035W
 DAM: CCR MS CATALYST 4142B
 CCR MS E-Z-3 2073Z



SEMEN \$30

Contact Allied to order semen.

ORigen **ALLIED**
 GENETIC RESOURCES

CCR WACO 4142G

Homozygous Black, Homozygous Polled || 5/8 SM 3/8 AN
 ASA# 3703573 DOB: 9/26/2019 Tattoo: 4142G

Owned by:
 Cow Camp Ranch || Gateway Simmental || All Beef LLC



- If you are looking for something a little different genetically to use on heifers, Waco is a great choice.
- Slam dunk Calving Ease and progeny that are thick and easy to flesh.
- Expect moderate framed, moderate milk daughters ideal for lower resource environments.
- Waco might be the only outcross SimAngus bull with a Marbling EPD in excess of +1.



Catalyst, Maternal Grand sire of Waco



Sire of Waco

EPD	DIRECT					MATERNAL					CARCASS				S INDEX	
	CE	BW	WW	YW	ADG	MCE	MILK	MWW	STAY	DOC	CW	YG	MARB	REA	API	TI
18.1	-3.7	64.1	103.8	0.25	11.3	21.1	53.0	11.9	15.6	37.9	-0.13	1.02	0.65	173.7	94.7	
0.70	0.82	0.78	0.77	0.77	0.37	0.25	0.37	0.38	0.63	0.57	0.44	0.55	0.53	-	-	
10	10	90	80	60	4	75	90	80	15	35	80	2	60	4	10	

SEMEN \$30

Contact Allied to order semen.



CCR PHENOM 8008A
 SIRE: CCR ABILENE 6018C
 CCR MS APPLE 9332W

CCR CATALYST 7035W
 DAM: CCR MS CATALYST 4142B
 CCR MS E-7-3 2073Z



Homozygous Black, Homozygous Polled || 1/2 SM 1/2 AN
 ASA# 3717071 DOB: 9/6/2019 Tattoo: 9121G

Owned by:
Gibbs Farms || Salinas Farms

- Consistently the best sire group of calves at Gibbs Farms and always crowd favorites on sale day. 27 sons the past two years have averaged \$9,675 at Gibbs Farms Annual Sale
- A bull that sires cattle that love fescue, heat, and harsh environments.
- His daughters exhibit true maternal power and beautiful udders with ideal shape and teat size.



Kenworth son



Dam of Kenworth

- They are about to wean some of the heaviest and thickest made calves at Gibbs Farms.
- A “no-holes” bull that leads all other Gibbs raised and owned bulls for customer satisfaction in the SimAngus division.



GIBBS 9121G KENWORTH

	DIRECT					MATERNAL					CARCASS				S INDEX	
	CE	BW	VW	YW	ADG	MCE	MILK	MWW	STAY	DOC	CW	YG	MARB	REA	API	TI
EPD	14.5	-0.6	86.0	146.4	0.38	9.4	34.1	78.3	13.1	23.3	53.1	-0.04	0.67	0.69	157.0	96.8
ACC	0.62	0.77	0.70	0.69	0.69	0.39	0.27	0.38	0.32	0.66	0.62	0.48	0.58	0.58	-	-
RANK	30	40	20	10	3	15	2	2	70	1	10	95	15	50	15	10

YON FUTURE FORCE Z77
 SIRE: YON FULL FORCE C398
 YON SARAH A100

HOOK'S INFINITI 10U
 DAM: GIBBS 0532X SM STAR P342
 WDG MS P342



SEMEN \$25

Contact Allied to order semen.

ORigen **ALLIED**
 GENETIC RESOURCES

GIBBS HILLTOP 0062H

Homozygous Black, Homozygous Polled || 1/2 SM 1/2 AN
 ASA# 3882780 DOB: 8/31/2020 Tattoo: 0062H

Owned by:
Gibbs Farms || Salinas Farms



- A next generation Triple Crown son with added performance and maternal traits. Hilltop sired one of the high selling sire groups as well as the high selling SimAngus bull at the 2023 Gibbs Farms Fall Sale.
- A bull that will add pay weight to your calf crop in one generation without sacrificing eye appeal and maternal traits as his dam is a beautiful uddered cow that continuously brings in big calves to the weaning pen.
- He consistently sires cattle that outperform just about anything he is compared against, and does not burn you in any way.

SIMANGUS™

EPD	DIRECT					MATERNAL					CARCASS				S INDEX	
	CE	BW	WW	YW	ADG	MCE	MILK	MWW	STAY	DOC	CW	YG	MARB	REA	API	TI
15.6	-1.6	91.5	149.9	0.37	9.9	22.5	68.6	12.9	15.9	73.8	-0.09	0.67	0.95	161.0	100.0	
0.61	0.74	0.64	0.65	0.65	0.33	0.23	0.34	0.36	0.57	0.52	0.39	0.47	0.47	-	-	
20	25	10	5	4	15	65	20	70	15	1	85	15	15	15	3	

SEMEN \$30

Contact Allied to order semen.



J BAR J NIGHTRIDE 225Z
 SIRE: GW TRIPLE CROWN 018C
 GW MISS GPRD 359A

LD CAPITALIST 316
 DAM: GIBBS 8090F EMPRISS 1085Y
 GIBBS 1085Y EMPRISS T091



Sire of Hilltop

ALLIED ORigen
 GENETIC RESOURCES

Homozygous Black, Homozygous Polled || 1/2 SM 1/2 AN
 ASA# 3997162 DOB: 9/4/2021 Tattoo: 1140J

Owned by:
Gibbs Farms || Powerline Genetics

- Kenworth's best son to date that has all the same expectations as his great sire, but with a touch more data.
- A bull that is striking in his look and offers a superior phenotype with added shape and eye appeal.
- His first calves will be set to wean this spring, and they appear to be one of the top sire groups at Gibbs Farms.



Dam of Kingpin



GIBBS KINGPIN 1140J

	DIRECT					MATERNAL					CARCASS				S INDEX	
	CE	BW	VV	YW	ADG	MCE	MILK	MWW	STAY	DOC	CW	YG	MARB	REA	API	TI
EPD	13.4	-0.6	90.0	153.4	0.40	8.8	35.7	81.2	17.2	20.7	56.1	0.04	0.80	0.61	172.1	102.0
RANK	40	40	10	4	2	25	1	1	25	1	5	99	10	65	5	2
ACC	0.46	0.50	0.47	0.48	0.48	0.24	0.15	0.25	0.29	0.43	0.41	0.32	0.38	0.38	-	-

YON FULL FORCE C398
 SIRE: GIBBS 9121G KENWORTH
 GIBBS 0532X SM STAR P342

TJ DIPLOMAT 294D
 DAM: GIBBS 8028F FANCY 6138D
 GIBBS 6138D FANCY 4422B



SEMEN \$40

Contact Allied to order semen.

ORigen **ALLIED**
 GENETIC RESOURCES

HOOK'S JOURNEY 7J

Homozygous Black, Homozygous Polled || 1/2 SM 1/2 AN
 ASA# 3866492 DOB: 2/15/2021 Tattoo: 7J

Owned by:
 J/C Simmental || Hook Farms



- Slam dunk calving ease, with incredible spread to Yearling Weight!
- Evita 18E does it again with this genomic outlier, outcross sired SimAngus.
- 13 EPD values in the top 20% of all SimAngus and 7 of them rank in the top 3% or better.
- Attractive profiling, level progeny with a little extra length and stretch.



Maternal brother to Journey



Dam of Journey

RANK	DIRECT					MATERNAL				CARCASS				S INDEX		
	CE	BW	WW	YW	ADG	MCE	MILK	MWW	STAY	DOC	CW	YG	MARB	REA	API	TI
EPD	22.6	-6.1	82.8	137.2	0.34	13.3	23.0	64.1	18.4	17.7	58.0	-0.12	0.92	0.96	199.6	107.2
KC	0.56	0.63	0.58	0.59	0.59	0.34	0.21	0.31	0.33	0.54	0.44	0.36	0.46	0.41	-	-
	1	1	25	15	10	1	60	40	15	5	4	80	3	15	1	1

SEMEN \$30

Contact Allied to order semen.



V A R DISCOVERY 2240
 SIRE: 44 BRAGGING RIGHTS 4372
 44 RUBY 2357

HOOK'S BEACON 56B
 DAM: HOOK'S EVITA 18E
 HOOK'S YUMA 49Y

ALLIED ORigen
 GENETIC RESOURCES

Homozygous Black, Homozygous Polled || 5/8 SM 3/8 AN
 ASA# 3875162 DOB: 2/16/2021 Tattoo: 9J

Owned by:
 Hall Stock Farm || Highland Acres

HA AMPLITUDE 9J

- One of the featured bulls on the Bred for Balance Sale. Amplitude can change your herd in one generation with his impressive EPD profile, impeccable phenotype and diverse pedigree.
- Amplitude has shown the ability to add performance, dimension of rib shape, structural soundness while improving overall eye appeal.



Amplitude son, Hall Stock Farms

- Backed completely by Hook Farms breeding his reputable maternal pedigree includes Hook's/JRA Demi 605D the 2018 % Simmental Junior and Open Show National Champion.



Sire of Amplitude



	DIRECT					MATERNAL					CARCASS				S INDEX	
	CE	BW	VV	YW	ADG	MCE	MILK	MWW	STAY	DOC	CW	YG	MARB	REA	API	TI
EPD	10.9	0.5	88.3	140.0	0.32	6.0	29.1	73.1	15.3	21.9	52.2	-0.03	1.01	0.59	171.9	103.4
ACC	0.52	0.58	0.53	0.54	0.54	0.27	0.17	0.28	0.32	0.47	0.45	0.36	0.43	0.44	-	-
RANK	75	60	15	15	20	65	15	10	45	1	10	95	2	70	5	2

BRIDLE BIT ECLIPSE E744
 SIRE: HOOK'S GALILEO 210G
 HOOK'S EVITA 18E

HOOK'S CAPITALIST 37C
 DAM: HA GIOVANNA 918G
 HOOK'S/JRA DEMI 605D



SEMEN \$30

Contact Allied to order semen.

ORigen **ALLIED**
 GENETIC RESOURCES

TSN ARCHITECT J618

Homozygous Black, Homozygous Polled || 1/2 SM 1/2 AN
 ASA# 3928828 DOB: 3/18/2021 Tattoo: J618

Owned by:
APEX Cattle



- From the first calf crop, his featured sons paced the 2024 APEX, LCOC, and TSN bull sales at \$26,000, \$20,000, \$17,000, and \$14,000.
- PROVEN calving ease on hundreds of first-calf heifers! They come easy, have vigor, and are packed with his anticipated quality.
- Outcross genetics at Its best combining an extraordinary EPD profile with his impressive individuality and gentle demeanor!
- He has an exciting future with his unique phenotype, structure, great feet, eye-appeal, and program impacting EPDs.
- Use him to advance calving ease, docility, and carcass traits without sacrificing performance and maternal genetics.
- Exceeding the \$29,000 \$Profit threshold, he ranks amongst the most elite of the Leachman, APEX, and TSN sires.
- Breed him to heifers with complete 'calving ease' confidence.
- Excellent quality semen!

SIMANGUS™

BUNK. K.C. EPD	DIRECT					MATERNAL					CARCASS				S INDEX	
	CE	BW	WW	YW	ADG	MCE	MILK	MWW	STAY	DOC	CW	YG	MARB	REA	API	TI
	15.8	-2.7	74.4	124.0	0.31	10.4	22.9	60.6	10.1	15.6	51.3	-0.11	0.95	0.81	166.3	98.1
	0.59	0.65	0.59	0.58	0.58	0.34	0.22	0.31	0.30	0.46	0.44	0.36	0.42	0.42	-	-
	20	15	55	40	25	10	60	60	90	15	10	85	2	30	10	5

SEMEN \$30

Contact Allied to order semen.



G A R ASHLAND
 SIRE: G A R HOME TOWN
 CHAIR ROCK SURE FIRE 6095

CCR COWBOY CUT 5048Z
 DAM: TSN MISS COWBOY D350
 TSN MISS FORCE A160



Sire of Architect



Homozygous Black, Homozygous Polled || 5/8 SM 3/8 AN
 ASA# 4058265 DOB: 2/5/2022 Tattoo: K249

Owned by:
 Cow Camp Ranch || Black Summit

- A heifer safe, maternally focused son of Hook's Eclipse who was an outlier for feed intake data in the 23 Bridle Bit Bull Sale.
- The bottom side of his pedigree features one of the rising stars in the Bridle Bit program a Black Hawk daughter out of the famous B452 donor.
- K249's flawless structure, ACE logo, and exceptional feed intake data makes him a rare find for SimAngus bull.
- No matter your breeding objectives K249's genetic value and exceptional phenotype will move any program in a positive direction.



Sire of Blackout

	DIRECT					MATERNAL					CARCASS				S INDEX	
	CE	BW	VV	YW	ADG	MCE	MILK	MWW	STAY	DOC	CW	YG	MARB	REA	API	TI
EPD	20.4	-3.9	76.9	117.5	0.25	10.8	28.5	66.9	19.7	16.6	25.4	-0.24	0.42	0.55	164.3	88.9
ACC	0.47	0.51	0.56	0.54	0.54	0.28	0.30	0.40	0.33	0.43	0.43	0.35	0.43	0.41	-	-
RANK	2	5	45	50	60	10	20	30	10	10	75	45	45	75	10	25

BRIDLE BIT CALVARY C503
 SIRE: BRIDLE BIT ECLIPSE E744
 BRIDLE BIT MISS A327

HOOK'S BLACK HAWK 50B
 DAM: BRIDLE BIT MISS F8111
 BRIDLE BIT MISS B452

BRIDLE BIT BLACKOUT K249



SEMEN \$30

Contact Allied to order semen.

ORigen **ALLIED**
 GENETIC RESOURCES

FSCR K048 FREELANCE

Homozygous Black, Homozygous Polled || 1/2 SM 1/2 AN
 ASA# 4049838 DOB: 3/4/2022 Tattoo: K048

Owned by:
 All Beef LLC



- If you do a search for bulls greater than +17 CE, more than +160 YW, +.8 MB, +1 or more from REA and a reasonable amount of STAY (+17 or higher), you will only find Freelance.
- 6 Frame growth bull with a wonderful, level clean profile, tremendous feet and soundness.
- His young donor dam produced the feature and easily high selling flush at the 2023 Fred Smith Ranch Sale.
- Hook's Freedom is a genomic giant. Full sib to the great Hook's Evita 18A donor, dam of Hook's Galileo.

SIMANGUS™

EPD	DIRECT					MATERNAL					CARCASS				S INDEX	
	CE	BW	WW	YW	ADG	MCE	MILK	MWW	STAY	DOC	CW	YG	MARB	REA	API	TI
18.6	-1.0	96.8	163.9	0.42	9.5	32.1	80.3	18.4	13.9	55.7	-0.14	0.88	1.12	190.1	109.8	
0.42	0.45	0.46	0.47	0.47	0.24	0.18	0.27	0.32	0.40	0.41	0.34	0.38	0.40	-	-	
4	35	3	1	1	15	5	1	15	30	5	75	4	3	1	1	

SEMEN \$30

Contact Allied to order semen.



HOOK'S BEACON 56B
 SIRE: HOOK'S FREEDOM 45F
 HOOK'S YUMA 49Y

G A R MOMENTUM
 DAM: G A R MOMENTUM 1786
 G A R PROPHET N694

ALLIED ORigen
 GENETIC RESOURCES

Homozygous Black, Homozygous Polled || 1/2 SM 1/2 AN
 ASA# 4049955 DOB: 3/7/2022 Tattoo: K066

Owned by:
 All Beef LLC

- His half-brother Freelance was the longer, more up-headed and more graceful brother, but Free Power was the brute of the two that topped the 2023 Fred Smith Company Ranch sale.
- Massive for body and thick from end to end, this big testicled growth bull is sound and powerful in all of the right ways.
- High for STAY and MWW Free Power should be an excellent choice for making replacements as well.
- His outcross dam definitely brings some new genetics to the SimAngus population as well.

FSCR K066 FREE POWER



	DIRECT					MATERNAL					CARCASS				S INDEX	
	CE	BW	WW	YW	ADG	MCE	MILK	MWW	STAY	DOC	CW	YG	MARB	REA	API	TI
EPD	13.4	-0.9	86.3	145.4	0.37	7.8	31.0	71.9	17.6	13.8	45.6	-0.02	0.83	0.82	173.2	100.4
ACC	0.44	0.49	0.50	0.51	0.51	0.24	0.31	0.39	0.30	0.39	0.39	0.32	0.38	0.38	-	-
RANK	40	35	20	10	4	35	10	15	20	35	20	95	5	30	4	3

HOOK'S BEACON 56B
 SIRE: HOOK'S FREEDOM 45F
 HOOK'S YUMA 49Y

44 COOL BREEZE 5036
 DAM: FSCR RITA E272
 44 RITA 5529



SEMEN \$30

Contact Allied to order semen.

ORigen **ALLIED**
 GENETIC RESOURCES

HOF NEW ERA 1882J



Homozygous Black, Homozygous Polled || PB SM
 ASA# 4025409 DOB: 8/31/2021 Tattoo: 1882J

Owned by:

APEX Cattle || R & R Cattle || Wagonhammer Ranches

- This amazing Guardian PB son combines the best of phenotype and data . . . great structure, feet, eye appeal, natural thickness, and body mass with an incredible set of EPDs!
- Maternally, his highly productive, beautiful uddered two-year-old dam stems from a great daughter of the famed BAR CK Tebow 110X.
- He combines superb calving ease, performance, maternal, and carcass genetics . . . TOP 2% MARB & STAY with top 1% \$API and \$TI plus 'show ring' eye appeal. Nine EPDs in TOP 2 – 20%!
- We predict that he will impact the breed in a huge way, much like our Proclamation, yielding stunning eye appeal and genetic diversity.
- His 'first time offered' semen is now. . . breed him to both heifers and cows with confidence!
- Excellent quality semen!

EPD	DIRECT					MATERNAL					CARCASS				S INDEX	
	CE	BW	WW	YW	ADG	MCE	MILK	MWW	STAY	DOC	CW	YG	MARB	REA	API	TI
	15.5	-1.9	88.7	135.3	0.29	9.8	30.0	74.2	23.2	3.1	37.2	-0.22	0.76	0.79	195.9	106.0
BW/KG	0.47	0.51	0.50	0.53	0.53	0.28	0.23	0.32	0.35	0.42	0.44	0.35	0.41	0.41	-	-
	10	10	15	20	25	5	10	10	1	99	20	99	2	70	1	1

SEMEN \$30

Contact Allied to order semen.



HOOK'S BEACON 56B
 SIRE: CLRS GUARDIAN 317G
 CLRS ALWAYS XCELLENT

CCR 9332 SINGLTRY 6337A
 DAM: HOF NEBRASKA QUEEN 9958G
 BAR CK 1006X E1108Z



Sire of New Era

ALLIED ORigen
 GENETIC RESOURCES

Homozygous Black, Homozygous Polled || 1/2 SM 1/2 AN
 ASA# 3498946 DOB: 3/15/2018 Tattoo: 111F

Owned by:

All Beef LLC || ABS Global || Eagle Pass Ranch || Clear Springs

- Fireman is simply not used enough and brings wonderful genetic value and front-end type to his progeny.
- Calves are heavy muscled, big ribbed, good looking and have great feet. Marketing them is just easy.
- Highly proven as a heifer bull, he'll work on about anything and is one of those bulls that you can breed 200 females to with great confidence for uniformity and quality.
- His famous donor dam TJ 22X is simply one of the breed legends for generating profit.



Son from Bulls of the Big Sky



Son from Bred for Balance



EGL FIREMAN 111F

	DIRECT					MATERNAL					CARCASS				S INDEX	
	CE	BW	VW	YW	ADG	MCE	MILK	MWW	STAY	DOC	CW	YG	MARB	REA	API	TI
EPD	17.8	-2.6	66.1	103.4	0.23	9.2	35.1	67.4	17.6	12.9	24.6	-0.38	0.85	1.01	174.9	92.8
ACC	0.67	0.77	0.71	0.72	0.72	0.41	0.33	0.43	0.40	0.61	0.59	0.47	0.60	0.57	-	-
RANK	10	15	85	80	75	20	1	25	20	45	80	10	4	10	4	15

CONNEALY IN SURE 8524
 SIRE: G A R SURE FIRE
 CHAIR ROCK 5050 G A R 8086

MR NLC UPGRADE U8676
 DAM: TJ 22X
 MS MISS 306R



SEMEN \$25

Contact Allied to order semen.



EGL CCR RAWHIDE 137J

Homozygous Black, Homozygous Polled || 1/2 SM 1/2 AN
 ASA# 3887973 DOB: 1/7/2021 Tattoo: 137J

Owned by:
 Cow Camp Ranch



- A leader in the SimAngus database for growth, marbling and TI if you are search of injecting more end product value in your progeny here is your bull.
- Easily the #1 marbling son of Favor while having the muscle and phenotypical excellence of his popular sire.
- One pass through the 2024 fall born Rawhide calves at Cow Camp Ranch will make you a big fan of Rawhide.

SIMANGUS™

EPD	DIRECT					MATERNAL					CARCASS				S INDEX	
	CE	BW	WW	YW	ADG	MCE	MILK	MWW	STAY	DOC	CW	YG	MARB	REA	API	TI
8.4	1.5	99.8	164.3	0.40	3.0	22.1	72.2	16.3	16.7	16.7	54.6	-0.05	1.06	0.66	177.6	109.8
0.52	0.66	0.51	0.52	0.52	0.27	0.18	0.28	0.31	0.42	0.41	0.34	0.41	0.41	-	-	
95	80	2	1	2	99	70	10	35	10	10	95	1	55	3	1	

SEMEN \$50

Contact Allied to order semen.



LCDR WITNESS 541C
 SIRE: Lcdr FAVOR 149F
 WS MISS SUGAR C4

G A R SURE FIRE
 DAM: G A R SURE FIRE 307
 CHAIR ROCK 9Q13 RITA 5048



Sire of Rawhide

ALLIED ORigen
 GENETIC RESOURCES

Homozygous Black, Homozygous Polled || 5/8 SM 3/8 AN
 ASA# 4206364 DOB: 1/28/2023 Tattoo: 303L

Owned by:
All Beef LLC || Genex || Wade Small || Black Summit

- One of the most exciting, outcross SimAngus to come along in while. He is a powerhouse!
- Massive quartered, square hiped with a huge rib cage, but still with a great looking front and profile.
- His feet are as near perfect as you will ever see on a SimAngus yearling bull, with extra heel depth and great toe shape and uniformity.
- PAP of 36, excellent disposition and 41 cm scrotal circumference just help seal his value proposition.



Sire of Summit



	DIRECT					MATERNAL					CARCASS				S INDEX	
	CE	BW	VV	YW	ADG	MCE	MILK	MWW	STAY	DOC	CW	YG	MARB	REA	API	TI
EPD	16.2	-1.0	92.1	150.2	0.36	9.3	26.3	72.3	18.2	18.0	40.7	-0.09	0.86	0.59	182.2	105.0
ACC	0.42	0.47	0.45	0.46	0.46	0.22	0.15	0.25	0.30	0.36	0.37	0.31	0.34	0.36	-	-
RANK	15	35	10	5	10	20	30	10	15	4	30	85	4	70	2	1

GW TRIPLE CROWN 018C
 SIRE: GIBBS FAST TRACK 0634H
 GIBBS 5781C STA 2614Z

NLC COW BOSS 160C
 DAM: BSUM 143J
 GW MISS DUE NORTH 025F



SEMEN \$40

Contact Allied to order semen.



FHCC HONOR CODE 3165L

Homozygous Black, Homozygous Polled || 1/2 SM 1/2 AN
 ASA# 4201167 DOB: 1/6/2023 Tattoo: 3165L

Owned by:
 All Beef LLC || Doug Frank || Frank Hazelrigg Cattle Co



- Something new for 2024, Honor Code is son of KBHR Honor out of one of the most valuable Angus donors in the breed.
- Woodland Blackcap Lady 84 is also the donor dam to Angus AI sires FHCC Majority 1551, FHCC Foundation 1558 and FHCC Federation 1571.
- Balanced trait improver with a top 3% value for MB EPD puts him lofty, top 1% values for \$API and \$TI.
- Something new on the dam side for the future of great SimAngus!



Maternal brother to Honor Code



Maternal sister to Honor Code

EPD	DIRECT					MATERNAL					CARCASS				S INDEX	
	CE	BW	WW	YW	ADG	MCE	MILK	MWW	STAY	DOC	CW	YG	MARB	REA	API	TI
16.6	-2.9	84.9	139.8	0.34	9.1	28.0	69.9	19.1	12.3	37.7	0.04	0.94	0.40	188.5	104.4	
0.42	0.44	0.47	0.46	0.46	0.23	0.21	0.25	0.32	0.42	0.40	0.33	0.40	0.38	-	-	
15	10	20	15	10	20	20	20	10	55	35	99	2	95	1	1	

SEMEN \$30

Contact Allied to order semen.



SIRE: HOOK'S BEACON 56B
 KBHR HONOR H060
 WS MISS SUGAR C4

DAM: G A R SURE FIRE
 WOODLAND BLACKCAP LADY 84
 BASIN BLACKCAP LADY 0172



Homozygous Black, Homozygous Polled || 1/2 SM 1/2 AN
 ASA# 4120776 DOB: 9/10/2022 Tattoo: 2380K

Owned by:
GIBBS FARMS || COW CAMP RANCH

- Powerful high selling SimAngus bull at the 2023 Gibbs Farm Bull Sale.
- A great option to inject growth and marbling without sacrificing maternal traits.
- Admired for his extra body, muscle and striking type Haymaker will no doubt sire phenotype
- A great option for customers looking to improve docility and are conscious of hair shedding.



GIBBS HAYMAKER 2380K



Sire of Haymaker

	DIRECT					MATERNAL					CARCASS				S INDEX	
	CE	BW	VW	YW	ADG	MCE	MILK	MWW	STAY	DOC	CW	YG	MARB	REA	API	TI
EPD	13.2	0.3	95.4	153.1	0.36	8.5	24.0	71.5	17.1	19.9	52.4	-0.13	0.74	0.72	167.9	101.6
ACC	0.43	0.51	0.50	0.49	0.49	0.21	0.16	0.26	0.31	0.41	0.40	0.31	0.35	0.37	-	-
RANK	45	55	4	4	10	25	50	15	25	2	10	80	10	45	10	2

GW TRIPLE CROWN 018C
 SIRE: GIBBS HILLTOP 0062H
 GIBBS 8090F EMPRISS 1085Y

CONNELLY BLACK GRANITE
 DAM: GIBBS 6123D MABELLE8365U
 GIBBS 8365U MABELLE N341



SEMEN \$30

Contact Allied to order semen.



SIMANGUS™

CCR CHOCTAW 0289K

Homozygous Black, Homozygous Polled || 5/8 SM 3/8 AN
 ASA# 4193476 DOB: 8/29/2022 Tattoo: 0289K

Owned by:
Heath Wills || Cow Camp Ranch



- The most massive, growth oriented, and phenotypically pleasing son of Triple Crown to hit the marketplace.
- Not only is Choctaw an excellent option for those looking for more pay weight, but he blends top tier carcass figures with wonderful docility.
- Choctaw is backed by some of the highest accuracy bulls in the Simmental business in CCR Boulder and CCR Cowboy Cut.
- Look for impressive Choctaw sons to be featured at Cow Camp Ranch and Wills Farms soon!

SIMANGUS™

EPD	DIRECT					MATERNAL				CARCASS				S INDEX	
	CE	BW	WW	YW	ADG	MCE	MILK	MWW	STAY	DOC	CW	YG	MARB	REA	API
13.5	-0.4	95.4	160.9	0.41	8.9	24.8	72.4	17.8	20.7	45.5	-0.25	0.78	0.86	175.6	104.9
0.47	0.51	0.54	0.50	0.50	0.28	0.28	0.38	0.36	0.45	0.43	0.35	0.40	0.41	-	-
40	45	4	2	1	20	45	10	20	1	20	45	10	25	4	1

SEMEN \$30

Contact Allied to order semen.



J BAR J NIGHTRIDE 225Z
 SIRE: GW TRIPLE CROWN 018C
 GW MISS GPRD 359A

CCR BOULDER 1339A
 DAM: CCR MS BOULDER 0289H
 CCR MS 0056 CWBOY 6129D



Sire of Choctaw

ALLIED ORigen
 GENETIC RESOURCES

Homozygous Black, Homozygous Polled || 5/8 SM 3/8 AN
 ASA# 4184964 DOB: 2/18/2023 Tattoo: 452L

Owned by:
 Klein Ranch

- One of the few opportunities to capture GW High Ball genetics!
- \$23,000 sale feature at Gateway and Klein Ranch's selection
- Lewistown offers 12 traits in the top 25%, he provides so much improvement for the future.
- High Ball progeny was absolutely a sale highlight, and Lewistown is no exception!



Sire of Lewistown



	DIRECT					MATERNAL					CARCASS				S INDEX	
	CE	BW	VV	YW	ADG	MCE	MILK	MWW	STAY	DOC	CW	YG	MARB	REA	API	TI
EPD	16.7	-1.4	90.0	139.9	0.31	9.4	30.3	75.7	20.4	18.3	44.1	-0.11	0.91	0.75	188.3	105.4
ACC	0.45	0.50	0.47	0.48	0.48	0.22	0.17	0.27	0.30	0.18	0.40	0.33	0.38	0.39	-	-
RANK	15	25	10	15	25	15	10	5	4	4	20	85	3	40	1	1

BAR CK PENDLETON 7028
 SIRE: GW HIGH BALL 102H
 GW MISS GPRD 341Z

GW JACKPOT 027C
 DAM: GW MISS JACKPOT 881F
 GW MISS GLDN EAGLE 666D



SEMEN \$30

Contact Allied to order semen.

ORigen **ALLIED**
 GENETIC RESOURCES

HA MAGNIFIQUE 72L

Homozygous Black, Homozygous Polled || 5/8 SM 3/8 AN
 ASA# 4196053 DOB: 4/2/2023 Tattoo: 72L

Owned by:
APEX Cattle



- One of the breed's most exciting new sires for the 2024 breeding season! Eight elite top 1-4% EPDs and \$Indexes!
- Already freezing quality semen at 11 months, Magnifique is truly unique for his early maturity paired with elite marbling and calving ease genetics.
- Few bulls can match his valuable combination of top percentile data, let alone possess his kind of flawless phenotype. Appreciate his overall physique, eye appeal, natural muscle, large scrotal size, and great feet.
- Use either Right Mate or the ASA Breed Plan Mating with your females to project how his elite CE, BW, MCE, MILK, STAY and MARB EPDs plus \$API and \$TI can move your female's production to a new, higher level.
- His dam is a beautifully built, sound uddered, moderate framed female with as much rib shape and capacity as one wants.
- His feet and legs, level topline, clean head, neck and underline makes him a great heifer bull option for both Purebred and Commercial heifers with top 1% CE and 3% BW assurance!

BUNK K.C. EPD	DIRECT					MATERNAL					CARCASS				S INDEX	
	CE	BW	WW	YW	ADG	MCE	MILK	MWW	STAY	DOC	CW	YG	MARB	REA	API	TI
22.1	-4.8	73.8	112.5	0.24	12.9	33.4	70.2	20.4	14.4	29.0	-0.11	1.22	0.58	211.5	108.0	
0.47	0.51	0.48	0.48	0.48	0.26	0.19	0.28	0.32	0.46	0.43	0.35	0.40	0.41	-	-	
1	3	60	60	70	1	3	15	4	25	65	85	1	70	1	1	

SEMEN \$30

Contact Allied to order semen.



BRIDLE BIT ECLIPSE E744
 SIRE: HOOK'S GALILEO 210G
 HOOK'S EVITA 18E

TJ DIPLOMAT 294D
 DAM: HOOK'S GIGI 67G
 HOOK'S DALILAH 105D

ALLIED ORigen
 GENETIC RESOURCES

Homozygous Black, Homozygous Polled || 1/4 SM 3/4 AN
 ASA# 4219097 DOB: 8/25/2022 Tattoo: 437K

Owned by:

Drake Simmental || Iron Creek Simmental || River Creek Farms

- The High-Performance Solution
- NO. 1 WEANING WEIGHT EPD AND NO. 1 YEARLING WEIGHT EPD SIMANGUS BULL IN THE ENTIRE DATABASE AT PRINT!!
- Almost unheard of growth – 124.5 (top 1%) WW, 205 (top 1%) YW and .5 (top 1%) ADG with top 50% CE, top 1% \$TI , Carcass Weight and Maternal Weaning Weight and top 20% \$API.



RVR SOLUTION 437K

	DIRECT					MATERNAL					CARCASS				S INDEX	
	CE	BW	WW	YW	ADG	MCE	MILK	MWW	STAY	DOC	CW	YG	MARB	REA	API	TI
EPD	12.8	2.8	124.7	204.2	0.50	6.1	26.3	89.1	11.3	13.7	85.9	0.06	0.64	0.72	154.0	112.0
BLK% ACC	0.42	0.50	0.47	0.49	0.49	0.26	0.16	0.25	0.28	0.42	0.38	0.32	0.39	0.37	-	-
BLK% EPD	50	95	1	1	1	65	30	1	85	35	1	99	15	45	20	1

E W A PEYTON 642
 SIRE: ROSEDA POWERBALL23 F091
 ROSEDA BLACKCAP B103 D118

G A R ASHLAND
 DAM: RVR MISS ASHLAND 221H
 RC MISS TOP GRADE 459A



SEMEN \$50

Contact Allied to order semen.

ORigen **ALLIED**
 GENETIC RESOURCES

TJ STONE COLD 336G



Homozygous Black, Homozygous Polled || 5/8 SM 3/8 AN
 ASA# 3611790 DOB: 2/16/2019 Tattoo: 336G

Owned by:
 Gibbs Farms || Baxley Family Farms || Triangle J Ranch

- The proven baldy bull that offers more calving ease, growth, carcass, docility and indexes than his competition.
- A bull that is extremely long sided, big topped, square made, and adds depth of body and substance to his progeny.
- His first daughters are about to wean their first calves, and exhibit beautiful near-perfect udders with small, evenly spaced teats. Stone Cold is leaving his mark as an udder improver.



Stone Cold son



Stone Cold daughter

DIRECT					MATERNAL					CARCASS					S INDEX	
CE	BW	WW	YW	ADG	MCE	MILK	MWW	STAY	DOC	CW	YG	MARB	REA	API	TI	
17.3	-3.0	79.4	134.9	0.35	10.8	31.8	71.4	17.5	19.4	40.1	-0.13	0.43	0.70	157.6	89.8	
0.74	0.88	0.83	0.83	0.83	0.50	0.32	0.44	0.41	0.76	0.62	0.48	0.61	0.59	-	-	
10	10	40	20	10	10	5	15	20	2	30	80	40	50	15	20	

BUNK & K&C EPD

SEMEN \$30

Contact Allied to order semen.



ACW IRONHIDE 395Y
 SIRE: TJ FROSTY 318E
 TJ 58B

CCR WIDE RANGE 9005A
 DAM: TJ 11D
 TJ 21Z

ALLIED GENETIC RESOURCES **ORigen**

Homozygous Black, Homozygous Polled || 1/2 SM 1/2 AN
 ASA# 3611575 DOB: 2/1/2019 Tattoo: 460G

Owned by:
 Triangle J Ranch || Shannon Welsch || Greg Drebes

- Incredible phenotype, balance, and length has become the staple of Chief sons across the country.
- Chief daughters are building upon his legacy with their wonderful type and strong maternal EPD predictors.
- The bottom side of Chief pedigree is TJ 52A who has sired numerous

herdsires across the country including the popular TJ Gold Strike from Select Sires.

- If you want a baldie bull to sire undeniable phenotype look no further.



TJ 81L, Chief daughter from Triangle J Ranch



TJ 2022 Top Seller and son of Chief



TJ CHIEF 460G

	DIRECT					MATERNAL					CARCASS				S INDEX	
	CE	BW	VW	YW	ADG	MCE	MILK	MWW	STAY	DOC	CW	YG	MARB	REA	API	TI
EPD	11.8	-0.8	80.5	115.4	0.22	4.4	35.4	74.9	19.1	12.8	26.6	-0.06	0.30	0.35	138.7	82.6
ACC	0.75	0.89	0.86	0.85	0.85	0.46	0.42	0.52	0.42	0.78	0.59	0.41	0.56	0.42	-	-
RANK	65	35	35	55	80	90	1	10	10	45	70	90	65	95	45	45

ACW IRONHIDE 395Y
 SIRE: TJ FROSTY 318E
 TJ 58B

TJ NEW TIME LINE 113X
 DAM: TJ 52A
 T J MISS DAY R1

SEMEN \$30

Contact Allied to order semen.

ORigen **ALLIED**
 GENETIC RESOURCES

C-3 GROUND BREAKER NS G953



Homozygous Black, Homozygous Polled || 1/2 SM 1/2 AN
 ASA# 3708449 DOB: 9/8/2019 Tattoo: G953

Owned by:
 All Beef LLC || Gibbs Farms || Micheal Cole || J/C Simmental

- Big time outcross and valuable genetics with a bald face!
- A true growth and carcass improver, Ground Breaker's maternal evaluation is exceptional too with a top 25 ranking for STAY and top 3% for MWW.
- The disposition too is as good as you will find. Every calf is quiet and simple to handle.
- Expect deep sided, soft made progeny with excellent feet and structure.



Son from Gibbs Farms



Son from Gibbs Farms

EPD	DIRECT					MATERNAL					CARCASS				S INDEX	
	CE	BW	WW	YW	ADG	MCE	MILK	MWW	STAY	DOC	CW	YG	MARB	REA	API	TI
	12.4	3.6	95.0	155.9	0.38	8.4	30.1	77.4	21.1	25.2	61.0	-0.14	0.79	0.82	172.4	99.6
KC	0.55	0.73	0.67	0.68	0.68	0.28	0.16	0.29	0.31	0.58	0.51	0.38	0.49	0.44	-	-
EPD	55	99	4	3	3	30	10	3	3	1	3	75	10	30	5	3

SEMEN \$30

Contact Allied to order semen.



SIRE: DIXON NS PRIME CUT C529
 DIXON BLK Y126 PREM-BEEF

DAM: WCM 623D
 WCM ELLA 311A

ALLIED GENETIC RESOURCES **ORigen**

Homozygous Black, Homozygous Polled || 5/8 SM 3/8 AN
 ASA# 4049412 DOB: 3/6/2022 Tattoo: 2426K

Owned by:
 All Beef LLC || Genex || T Heart Ranch

- Bred by the "King of PAP," High Mark is backed by multiple generations of PAP tested, high achievers.
- High Mark is a great looking bull that is clean fronted, level topped, square hipped and has tremendous structure under him.
- Great spread from CE to Weaning make him a heifer bull that is especially well suited to higher altitude or situations where heart health is a necessary priority.
- High producing young dam currently has 2 calves weaned at an average ratio of 121!



	DIRECT					MATERNAL					CARCASS				S INDEX	
	CE	BW	WW	YW	ADG	MCE	MILK	MWW	STAY	DOC	CW	YG	MARB	REA	API	TI
EPD	17.6	-1.1	94.9	150.4	0.35	9.6	32.6	80.0	13.2	9.8	50.0	-0.15	0.75	0.74	168.7	104.7
ACC	0.45	0.49	0.48	0.48	0.48	0.23	0.31	0.37	0.31	0.38	0.40	0.31	0.35	0.37	-	-
RANK	10	30	4	5	10	15	4	2	70	85	10	75	10	40	10	1

HOOK'S EAGLE 6E
 SIRE: TJ NIGHT OWL 561H
 TJ 130F

IR CAPITALIST E041
 DAM: THR RUTH 0717H
 THR RUTH 8107F



SEMEN \$25

Contact Allied to order semen.



RVR HAYMAKER 414K

Heterozygous Black, Homozygous Polled || 1/2 SM 1/2 AN
 ASA# 4248819 DOB: 8/22/2022 Tattoo: 414K

Owned by:
 Drake Simmental || Iron Creek Simmental || River Creek Farms



- When you want to add pounds to your SimAngus herd, THROW A HAYMAKER!
- Top 1% Weaning Weight (121.4), Yearling Weight (196.6) and ADG (.47), top 3% marbling, 4% \$API and 1% \$TI.
- Powerful, attractive outcross to most SimAngus with elite top 1% growth and nice balance in his numbers across the board, including reasonable calving ease.

SIMANGUS™

EPD	DIRECT					MATERNAL					CARCASS				S INDEX	
	CE	BW	WW	YW	ADG	MCE	MILK	MWW	STAY	DOC	CW	YG	MARB	REA	API	TI
13.0	1.7	120.5	195.5	0.47	6.7	22.0	82.6	12.1	13.6	68.8	0.04	0.94	0.57	176.4	119.5	
0.43	0.44	0.45	0.46	0.46	0.27	0.15	0.24	0.29	0.45	0.39	0.32	0.39	0.36	-	-	
45	80	1	1	1	55	70	1	80	35	1	99	2	70	3	1	

SEMEN \$50

Contact Allied to order semen.



EW A PEYTON 642
 SIRE: ROSEDA POWERBALL23 F091
 ROSEDA BLACKCAP B103 D118

WS ALL-AROUND Z35
 DAM: RC MISS ALL-AROUND 031C
 RC MISS TOP GRADE 040A

ALLIED GENETIC RESOURCES **ORigen**

Homozygous Black, Homozygous Polled || 5/8 SM 3/8 AN
 ASA# 4202719 DOB: 1/28/2023 Tattoo: TERS 316L

Owned by:
 Highland Acres || Trails End Cattle || Clear Springs

- Outcross genomic super star with tremendous spread for both growth and carcass traits.
- A truly special bull for his mass, rib shape, muscle definition and superb docility.
- Add in his genetic predictions for maternal traits and Leopold proves you really can have it all!



Dam of Leopold



TERS LEOPOLD 316L

	DIRECT					MATERNAL					CARCASS				S INDEX	
	CE	BW	VV	YW	ADG	MCE	MILK	MWW	STAY	DOC	CW	YG	MARB	REA	API	TI
EPD	17.9	-2.5	87.2	145.6	0.37	11.5	23.9	67.5	19.3	20.7	60.8	-0.20	0.98	1.16	195.2	107.5
ACC	0.46	0.51	0.48	0.49	0.49	0.28	0.24	0.33	0.36	0.46	0.44	0.36	0.42	0.42	-	-
RANK	10	15	15	10	4	3	50	25	10	1	3	60	2	3	1	1

J BAR J NIGHTRIDE 225Z
 SIRE: GW TRIPLE CROWN 018C
 GW MISS GPRD 359A

TJ FIRST CUT 1109C
 DAM: GIBBS 9438G MABELLE 6034D
 GIBBS 6034D MABELLE4135B



SEMEN \$40

Contact Allied to order semen.

ORigen **ALLIED**
 GENETIC RESOURCES

BRIDLE BIT COUNTRY CLUB L3111

Homozygous Black, Homozygous Polled || 5/8 SM 3/8 AN
 ASA# 4211474 DOB: 2/17/2023 Tattoo: L3111

Owned by:
Deeds Cattle Company



- Backed by one of the most successful cow families in the breed. B452 progeny has been sold to breeders in many states.
- Country Club L3111 has the potential to not only change the breed but change the whole beef industry for feed efficiency.
- The number one ranked bull among 89 contemporaries for: Average daily gain 4.87- 131 index; Feed conversion 4.84 - 126 index; RFI -2.89



Full sister to Country Club owned by Taylor Farms, TN.



Dam of Country Club

CE	DIRECT				MATERNAL				CARCASS				S INDEX		
	BW	WW	YW	ADG	MCE	MILK	MWW	STAY	DOC	CW	YG	MARB	REA	API	TI
16.5	-2.4	84.8	138.3	0.33	9.0	31.9	74.2	15.3	17.6	53.1	-0.17	0.46	0.55	154.1	92.9
0.47	0.50	0.49	0.53	0.53	0.30	0.33	0.41	0.34	0.47	0.45	0.36	0.45	0.43	-	-
15	15	20	15	15	20	5	10	45	10	10	70	35	75	20	15

SEMEN \$25

Contact Allied to order semen.



BRIDLE BIT CALVARY C503
 SIRE: BRIDLE BIT ECLIPSE E744
 BRIDLE BIT MISS A327

SAND RANCH HAND
 DAM: BRIDLE BIT MISS B452
 BRIDLE BIT MISS Y183

ALLIED ORigen
 GENETIC RESOURCES

Homozygous Black, Homozygous Polled || PB AN
 ASA# 3502250 DOB: 2/6/2016 Tattoo: 6184

Owned by:
 All Beef LLC || J/C Simmentals || Fauth Ranch

- Comrade is one of the most gentile older Angus bulls with great feet and a simply massive presence.
- Highly proven in the IGS database, he works on heifers and makes great daughters.
- Calves are level, deep sided and very attractive on the profile.



Dam of Comrade

- Female wise, he is backed by one of the best cow families to come out of the great maternal reputation Mill Brae program.



Comrade son from Nelson Livestock

MILL BRAE COMRADE 6184



	DIRECT					MATERNAL					CARCASS				S INDEX	
	CE	BW	VW	YW	ADG	MCE	MILK	MWW	STAY	DOC	CW	YG	MARB	REA	API	TI
EPD	14.4	-1.8	63.6	120.7	0.36	6.1	35.5	64.9	14.4	13.2	47.0	0.07	0.62	0.50	132.2	72.5
ACC	0.73	0.66	0.60	0.59	0.59	0.55	0.41	0.42	0.28	0.60	0.54	0.45	0.66	0.51	-	-
RANK	30	20	90	45	10	65	1	40	55	40	15	99	20	85	55	80

CONNEALY CONSENSUS 7229
 SIRE: CONNEALY COMRADE 1385
 HAPPY GEE OF CONANGA 919

S S OBJECTIVE T510 OT26
 DAM: MILL BRAE OBJ BLACKCAP 9244
 MILL BRAE RT BACKCAP 8022



SEMEN \$25

Contact Allied to order semen.

ORigen **ALLIED**
 GENETIC RESOURCES

BULL NAME	Page	BULL NAME	Page	BULL NAME	Page	BULL NAME	Page
ASR AMERICAN PROUD H0301	15	FSCR K048 FREELANCE	114	IRON CREEK NEVER SAY NEVER 9	101	MR ISHEE TRIPLE TRAIL BLAZER	48
BAS MONEY MAKER	46	FSCR K066 FREE POWER	115	JC FORTUNATE 741L	64	MUSHRUSH K707	84
BRIDLE BIT GPS H078	32	GIBBS 9114G ESSENTIAL	8	JC LOOKOUT 10L	65	PITTS JUSTIN TIME J15	77
BRIDLE BIT BLACKOUT K249	113	GIBBS 9121G KENWORTH	107	JC MR LAWLESS 738L	63	QB SPECIAL OPS K11	42
BRIDLE BIT COUNTRY CLUB L3111	132	GIBBS CULMINATION	41	JC MR PONTIAC 114K	62	REDHILL BURLEY 99J	76
BRIDLE BIT ECLIPSE E744	91	GIBBS HAYMAKER	121	JC MUSCLE MAN 87K	61	RFS BRUNO	70
BRIDLE BIT RESOURCE G9117	7	GIBBS HILLTOP 0062H	108	JC QUIET MAN 758K	33	RFS CREDENTIALS	39
BROWN RRR EMBLEM J3541	6	GIBBS KINGPIN 1140J	109	JCTALON 403G	89	RFS TRAVELER L23	38
BSUM APPLIED SCIENCE 303L	119	GIBBS SIGNATURE 2510K	40	JC TOTAL POWER F113K	20	RR5-MR MOAB J239	79
C-3 GROUNDBREAKER NS G953	128	GW HILGER ONE 474H	82	KBHR KOTA L175	43	RUBYS HITMAN 0107H	52
C-3 NEXT UP NS B220 J939	100	GW JAILBREAK 555J	95	KBHR ALL AMERICAN G104	72	RVR HAYMAKER 414K	130
CCR ANTHEM 3355J	99	GW LEWISTOWN 452L	123	KBHR CHARGER K102	69	RVR SOLUTION 437K	125
CCR BEDROCK 5171J	96	GW MAJOR MOVE 590E	86	KBHR CIMARRON F151	37	SCHOOLEY HAGGARD A411H	90
CCR BONAFIDE 5116F	92	GW MEDICINE MAN 200K	102	KBHR GLOBAL J138	4	SCHOOLEY KROWN 28K	56
CCR CHOCTAW 0289K	122	GW TRIPLE CROWN 018C	87	KBHR GUNSMOKE J131	17	SOUTHERN FORTUNE TELLER	88
CCR COCHISE 4142H	105	HA AMPLITUDE 9J	111	KBHR HARTLAND H100	60	TERS LEOPOLD 316L	131
CCR FIRE POWER 8081J	97	HA COVENANT 30K	11	KBHR HIGH ROAD E283	27	THR HIGH MARK 2255K	129
CCR NATIONWIDE 4503J	98	HA JUSTICE 30J	23	KBHR HONOR H060	12	TJ 50K 485H	21
CCR POUNDER 2045F	93	HA MAGNIFIQUE 72L	124	KBHR KEYNOTE K229	18	TJ CHIEF 460G	127
CCR THR EL DORADO 4142J	57	HOF NEW ERA 1882J	116	KBHR SCREENSHOT K167	51	TJ CREED 565L	50
CCR WACO 4142G	106	HOOK'S BEACON 56B	36	LBRS DAKOTA PRIDE J68	22	TJ GOLD	13
CLRS HOMELAND 327H	94	HOOK'S EAGLE 6E	54	LBRS GENESIS G69	9	TJ HEISMAN 388F	29
CLRS JEFFERSON 951J	85	HOOK'S ENCORE 65E	35	LBRS LIMITED EDITION L31	45	TJ LAMBEAU 558L	44
CLRS JERICHO 336J	104	HOOK'S GALILEO 210G	55	LBRS LOGAN L254	53	TJ STONE COLD 336G	126
CLRS JOHNNY WALKER 1049J	34	HOOK'S FOREFRONT 16J	24	LCDR RESERVE 210J	47	TSN ARCHITECT J618	112
CLRS JUSTIFIED 7101J	103	HOOK'S FREEDOM 45F	28	LCRR THR HEART TO HEART 1231J	83	WBF PATTON K059	16
CLRS KANGAROO 956K	58	HOOK'S FRONTLINE	26	LRS DUTTON 611K	19	WS 38 SPECIAL 20H	75
CLRS KING JAMES 616K	10	HOOK'S FULL FIGURES 11F	66	LRS FALCON 442G	25	WS FULL HOUSE 36K	68
EGL CCR RAWHIDE 137J	118	HOOK'S HERCULES 209H	73	MF/BMF HILLJACK H13F	30	WS FULL PAY 68K	78
EGL FIREMAN 111F	117	HOOK'S JOURNEY 7J	110	MILL BRAE COMRADE	133	WS HOLLYWOOD 79H	71
ES JACK RED LG11	80	HSF CARDINAL 133G	74	MF/BMF HILLJACK H13F	30	WS LEGEND 4L	81
FHCC HONOR CODE 3165L	120	IR/JLN BOOMER J425	5	MR FR MIC CHECK K4	49	WS PROCLAMATION E202	14
FIVE STAR JACKSON J10	67	IRON CREEK ANTHEM 14J	31	MR ISHEE LIGHTS OUT 114J	59		

Reaching the World's LARGEST Buyer Base.

IF YOU ARE A RANCHER with uniform load lots and purchase genetics from reputable Allied seedstock providers, **Contact the Clint Berry Marketing Group** to get the most out of your next load of feeder cattle.



CLINT BERRY

417-844-1009

San Angelo, TX

Marketing high quality cattle, coast to coast, to a national buyer base.

ROCKY FORSETH

406-590-7984

Fairfield, MT

Serving customers nationwide.

JAKE FEDDES

406-581-8157

Manhattan, MT

Serving Montana, Wyoming and Idaho Region.

LOGAN BUTCHER

406-350-1417

Lewistown, MT

Serving Montana and beyond.

JAKE BAUMAN

701-321-0473

Linton, ND

Serving the Northern Plains Region.

KYLEY DEVOE

940-367-4708

Justin, TX

Serving Texas and the southwest.

Market Your Cattle The Superior Way!

www.superiorlivestock.com

www.alliedgeneticresources.com

Additional Semen Available

NAME	REG. NO.	COLOR	%	PRICE	\$API	\$TI	FOOTNOTE
CAMP CAMPBELL E737	3319012	BLK	PB SM	\$15.00	150.6	84.7	Total outcross Purebred. Maternal sire with very attractive daughters.
CLRS HERO 8086H	3709371	BLK	PB SM	\$20.00	183.8	86.3	Fabulous phenotype to make great looking heifer safe sons.
HOOK`S BOZEMAN 8B	2854480	BLK	PB SM	\$20.00	153.8	83.2	Highly proven maternal sire that adds rib, volume and stoutness to every calf.
IR ZEUS A718	2810652	BLK	PB SM	\$20.00	169.6	90.5	Pure outcross maternal! Sires some of the best females in the breed.
KOCH LC MONTE 803U	2471172	BLK	PB SM	\$20.00	124.5	81.5	Outcross power bull. Growth and muscle!
NLC GEN TEN 82E	3317984	BLK	PB SM	\$15.00	132.4	78.7	Total outcross maternal Purebred. 10 Generations of reputation NLC cows.
SLN AVONDALE E8062	3250533	BLK	PB SM	\$20.00	158.2	81.5	High marbling, very maternal IR Zues son. More outcross options!
TJ HIGH PLAINS 986E	3288842	BLK	PB SM	\$15.00	144.5	85.6	Proven Cowboy Cut son. Sires great females with more growth, size and stretch.
GIBBS 0689X CRIMSON TIDE	2602503	BWF	PB SM	\$40.00	126.8	87.8	Old school growth baldy bull. Adds frame and length. Very limited supply.
BRIDLE BIT BEST MAN F839	3423917	RED	PB SM	\$15.00	131.8	72.6	Becoming more popular with age. Outcross Red genetics with very attractive type.
CDI MAVERICK 335B	2853061	RED	PB SM	\$15.00	149.8	87.4	Higher growth Xpectation son. Great daughters as Xpected!
HOOK`S RED ZONE 79Z	2674963	RED	PB SM	\$20.00	153.0	90.8	Highly proven Beef King son. Still makes some of the best red sons of any sire!
HOOK`S YUKON 80Y	2612543	RED	PB SM	\$15.00	149.8	87.3	Makes cookie cutter daughters with great udders. Top 5% STAY.
KBHR DUALLY H167	3789554	RED	PB SM	\$30.00	183.1	98.7	Early proof has been tremendous on this more growth oriented Imperial son.
RFS BULLETPROOF B42	2930104	RED	PB SM	\$25.00	133.8	93.8	Dark red, outcross Purebred is still siring lots of high sellers. Top 1% Growth.
WS ZENITH Z55	2675747	RED	PB SM	\$15.00	147.5	86.8	Big framed, fast growing progeny. Lots of STAY. Great on Red Angus females.
NAME	REG. NO.	COLOR	%	PRICE	\$API	\$TI	FOOTNOTE
CCR SPEAK NOW 6178G	3703453	BLK	3/4 SM	\$25.00	137.1	87.1	Wonderful phenotype, balance and quality. High Grow, STAY and Doc.
GW OUTBACK 485F	3389831	BLK	3/4 SM	\$20.00	150.9	92.4	Big time outcross genetics! Sons have extras size and stretch and sell very well.
HOOK'S FLINT 2F	3403314	BLK	3/4 SM	\$20.00	177.7	85.0	Elite calving ease with clean, attractive type and very good daughters.
JC MR FINAL PRODUCT 209F	3433351	BLK	3/4 SM	\$15.00	169.9	86.8	Tremendous STAY, MB and REA. More proof is making him more popular.
KBHR GENETIC FORCE G095	3618714	BLK/HET	3/4 SM	\$30.00	182.1	97.2	Needs more use! Top 1% MB and 4% STAY. Will make a great red PB soon!
SHSF FREIGHTLINER D10	3173521	BLK	3/4 SM	\$20.00	121.0	86.2	Huge growth and great uddered, attractive daughters are his claims to fame.
NAME	REG. NO.	COLOR	%	PRICE	\$API	\$TI	FOOTNOTE
A3R TRILOGY 54C	3020858	RWF	1/4 SM	\$25.00	146.8	84.4	Proven Red, white faced genetics. Tremendous phenotype and a shot of Marbling.

Additional Semen Available

NAME	REG. NO.	COLOR	%	PRICE	\$API	\$TI	FOOTNOTE
IR ORIGINAL H341	3839855	BLK	SIMANGUS	\$40.00	157.2	101.7	Now deceased and limited supply. Outcross pedigree and highly marketable.
TJ NEBRASKA 258G	3582542	BLK	SIMANGUS	\$20.00	154.2	100.6	Highly proven growth and frame adding sire. Daughters, really high producers.
EGL CINCHED 116F	3498948	BLK	SIMANGUS	\$20.00	179.3	99.3	Underused Calving Ease and Spread bull with outstanding phenotype!
IR CAPITALIST E041	3344847	BLK	SIMANGUS	\$20.00	184.3	99.2	Great spread and profit. Daughters exceptional. Doc EPD is grossly exaggerated!
TJ FLAT IRON 259G	3582543	BLK	SIMANGUS	\$20.00	171.1	95.7	Adds lots of look, lots of Calving Ease, lots of Marb. and lots of maternal longevity.
JC MR NATIONAL 610Y	2616993	BLK	SIMANGUS	\$20.00	172.1	87.6	High output maternal genetics with near perfect udders. Top 2% Marb. too.
TJ MARLBORO MAN 360A	2773927	BLK	SIMANGUS	\$20.00	165.6	83.7	One of the highest STAY SimAngus bulls on the planet. Daughters are flat good.
JC MR FIVE STAR 532G	3555647	BLK	SIMANGUS	\$20.00	131.1	94.4	Great structured, exceptional growth and power bull. Top 1% MWW as a bonus.
GIBBS 6176D FACEBOOK	3256169	BWF	SIMANGUS	\$20.00	133.6	93.8	Simply makes fast growing, thick ended, massive baldies.
EAGLE PASS CONVERSION	3080731	BLK/HET	SIMANGUS	\$20.00	143.4	90.1	Proven maternal genetics. Extra spread and level attractive profile. Make a red!
GW WINDFALL 285J	3875084	BLK	SIMANGUS	\$25.00	157.9	93.6	Complete sire with added growth and carcass. Attractive progeny.
GIBBS 7124E STONEWALL	3405044	BLK	SIMANGUS	\$20.00	159.7	93.3	Proven spread genetics with extra muscle. Expect improved docility as well.
TJ FIRST CUT 1109C	3022818	BLK	SIMANGUS	\$20.00	163.7	93.0	Underused Maternal and Carcass improver. Great cow family too!
GW PROSPECTOR 389C	3012758	BLK	SIMANGUS	\$20.00	159.2	90.5	Highly proven Calving Ease and Spread sire with added Marbling and REA.
J-J ZINSER 514C	2965068	BLK	SIMANGUS	\$20.00	112.2	88.5	Stunning, high growth and high phenotype sons. Most use him multiple years.
S D S ALUMNI 115X	2548149	BLK	SIMANGUS	\$15.00	155.3	88.1	Breed him to 10 or 1000 females, works every time. Grow, daughters, carcass.
RLWF PROPHET MARGIN 1393	2889313	BLK	SIMANGUS	\$15.00	170.0	87.8	Tremendous heifer bull! Moderate, heavy miking daughters with great udders.
HOOKS ADMIRAL 33A	2716194	BLK	SIMANGUS	\$15.00	130.2	87.1	Massive, terminal machine of a sire. Tremendous thickness, grow and docility.
HOOK'S XAVIER 14X	2559356	BLK	SIMANGUS	\$15.00	130.8	86.7	Old school, highly proven growth and maternal sire. Still relevant today.
TJ DIPLOMAT 294D	3148116	BLK	SIMANGUS	\$20.00	151.5	86.7	Makes some of the most physically beautiful, good uddered daughters in the breed.
TJ COMMISSIONER 421G	3611962	BLK	SIMANGUS	\$20.00	156.9	86.2	Proven Calving Ease and Spread bull with consistently good calves. Worth a try!
GIBBS 8035F XCITE	3568976	BLK	SIMANGUS	\$15.00	151.9	85.5	Unique SimAngus pedigree with lots of added Marbling genetics.
TFS DUE NORTH 2659Z	2654477	BLK	SIMANGUS	\$20.00	156.1	85.3	Highly proven Calving Ease and maternal sire, excellent udders. Consistent sons.
KBHR WENTZ E190	3312184	BLK	SIMANGUS	\$15.00	106.0	83.8	Massive bodied, high growth phenotype in every single calf.
GIBBS 6155D SUPER DUTY	3256504	BLK	SIMANGUS	\$20.00	142.5	81.1	Cookie cutter, moderate, productive and attractive daughters. Great docility too!
JC JOURNEY 610E	3281756	BLK	SIMANGUS	\$15.00	146.6	79.5	Outcross heifer bull. Daughters are moderate, easy keeping and productive.
GIBBS 5063C HOME RUN	3104722	BLK	SIMANGUS	\$15.00	122.6	72.6	Sleep all night Calving Ease. Makes easy fleshing, big volumed progeny.
CCR WICHITA 4069D	3149505	BLK	SIMANGUS	\$15.00	119.2	71.1	Highly proven, slam dunk calving ease. Calves are attractive and easy to sell.
GW SCC CARRY ON 576D	3116966	RED	SIMANGUS	\$20.00	170.9	93.9	The more he gets used, the more he gets liked! Spread and marketability.
GW-SCC DIRECT DRIVE 064G	3548763	RED	SIMANGUS	\$20.00	185.6	90.2	Deserves more use as one of the best red heifer bulls of any breed! 3/8 Sim.
NAME	REG. NO.	COLOR	%	PRICE	\$API	\$TI	FOOTNOTE
KCC JUDGE 258-J058	4130875	RED	RED AN		144.0	90.5	Total outcross Red Angus growth bull with tremendous STAY and Marbling
KCC EXCELLENCE 139-774	3500599	RED	RED AN		140.8	78.2	Highly Proven, Sleep all night calving ease sire. Makes great SimAngus too!



2245 Ropp Road
Normal, IL 61761

Presorted
First Class
US Postage
PAID
SlateGroup

Serious Genetic Value.