



**SPRING BULL SALE**  
— **April 13, 2024** —



CROSS TIMBERS, MO **LUCAS CATTLE COMPANY** 1:00 PM CT



# WELCOME TO THE SALE

Charlotte and I would like to welcome you to our 2nd annual Spring Performance Bull and Female Sale. Lucas Cattle Company has been in the Simmental cattle business for almost 3 decades and has had private treaty bull sales for 23 years and now look forward to continuing to offer the same high-quality offering to you in a live auction and online via DVAuction. We are very proud of the powerful Simmental and SimAngus bulls and commercial bred females that we are presenting to you for your consideration.

As many of you know we have made a strategic decision to ratchet up our genomic efforts by establishing a relationship with Allied Genetic Resources to expand our embryo transfer program along with the selective addition of some of the most powerful cow families in the Simmental breed starting with the breed changing WS MS SUGAR C4 and SSF BLK LOUISE Y534 along with recently adding ADV MS Genesis J1017.

We have made these significant enhancements to better serve both commercial and seedstock cattlemen. We look forward to being a sought-after partner in the Simmental cattle business and we look forward to helping our customers be the most successful they can be with their own operations.

It is an exciting time to be in the cattle business as the demand for high quality genetics has never been more sought after. While the beef business always has its challenges, it is time to take advantage of its historic prices and epic demand. The fall and winter have been reasonable to deal with (apart from a bitter cold snap in January). With timely rains and some sunshine, we should be off to a great beginning to the pasture season. I finally want to take the opportunity to thank our crew at Lucas Cattle Company for making our operation successful. Running a high impact seedstock operation has a lot of moving pieces and requires a tremendous amount of organization and attention to detail. Jeff, Holly, Cleo, and John Henry champion our efforts and their hard work is very much appreciated.

If you are one of our past private treaty sale customers, then welcome back, and if this is your first visit to Lucas Cattle Company, then we welcome you. If you have any questions, please feel free to contact our team.

Welcome to Lucas Cattle Company,  
*Forrest Lucas*



**Forrest & Charlotte Lucas - Owner**  
Jeff Reed - Cattle Manager - 417-399-1241  
Holly Hubert - Breeding Manager 417-733-0059  
Dr. Mike Siemens - Genetics & Marketing Strategy 316-737-9318  
Office 417-998-6512

[www.LucasCattleCompany.com](http://www.LucasCattleCompany.com)





# SPRING BULL SALE

## — April 13, 2024 —

### AUCTIONEER.

Col. Tracy Harl 402-469-3852

### LUCAS CATTLE COMPANY CONTACTS.

Jeff Reed, Cattle Manager	417-399-1241
Holly Hubert, Breeding Manager	417-733-0059
Cleo Fields, Data Manager	417-399-7124
Jonthan Henry, Commercial Manager	417-224-2455
Junior Stroup, Feedlot Manager	417-733-3050
Jamie Devney, Vice President Business Development	317-439-0616
Dr. Mike Siemens, Genetics & Marketing Strategy	316-737-9318

### SALE REPRESENTATIVES.

Dakota Ferguson, <i>Missouri Beef Cattleman</i>	785-893-1604
Marty Ropp, Allied Genetic Resources	406-581-7835
Corey Wilkins, Allied Genetic Resources	256-590-2487
Jared Murnin, Allied Genetic Resources	406-321-1542

### REGISTRATION AND UPDATED EPDs.

All cattle will be registered in the American Simmental Association. All EPDs are the most current BOLT at the time of printing conducted by IGS and the American Simmental Association. Please note that EPDs may change from the time the sale catalog is printed until registration papers are transferred.

### BREEDING GUARANTEE.

We stand behind all of our bulls and want you to be satisfied, so let us know as soon as possible if there are any problems. Scrotal measurements are actual (not adjusted) as reported at the time of fertility exam, and will be listed on the supplement sheet on sale day. All of our bulls have passed a fertility soundness exam unless indicated on the sale block. All bulls are guaranteed breeding sound. Come with a standard 90 day breeding season guarantee at the onset of breeding season.

### ANNOUNCEMENTS.

Announcements made sale day take precedence over printed material in the sale book or other printed material associated with the sale.

### SALE MANAGEMENT



Marty Ropp	406-581-7835
Corey Wilkins	256-590-2487
Jared Murnin	406-321-1542

[www.alliedgeneticresources.com](http://www.alliedgeneticresources.com)

### 75 SIMANGUS AND SIMMENTAL BULLS

40 LUCAS CATTLE COMPANY  
COMMERCIAL SPRING-CALVING  
BRED HEIFERS

HIGH-PERFORMANCE CATTLE SELL AT 1:00 PM CT

## Lucas Cattle Company

10763 US-65 Cross Timbers, MO 65668

### LIABILITY.

Owners, their agents, sales management, or any of the sale staff will not be held responsible for any personal injury, loss or accident while attending this sale.

### CONDITIONS OF SALE.

All animals will be sold in accordance with suggested guidelines of the American Simmental Association. Unless other conditions are stated in this book.

### SCHEDULE OF EVENTS.

#### April 12

All Day Cattle Available for Viewing

#### April 13

8:00 AM Cattle Available for Viewing

11:30 AM Complimentary Lunch

1:00 PM Auction Begins

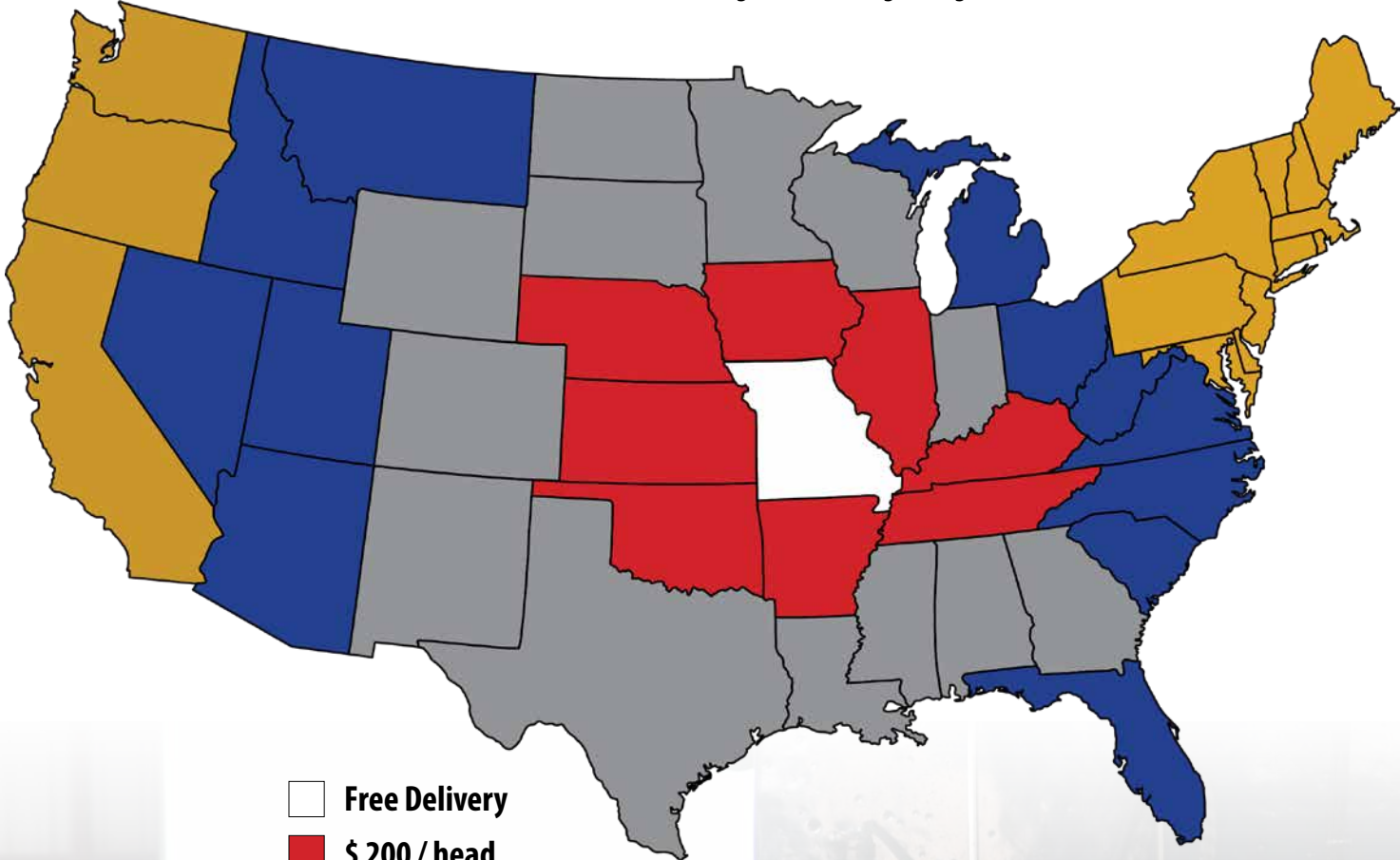
### ONLINE BIDDING.

Bid live online at [www.dvauction.com](http://www.dvauction.com).  
For more information, see page 9.

**DVAuction**  
Broadcasting Real-Time Auctions

# DELIVERY OPTIONS.

Please contact Jeff Reed, cattle manager, for trucking arrangements. 417-399-1241



-  Free Delivery
-  \$ 200 / head
-  \$ 300 / head
-  \$ 400 / head
-  \$ 500 / head





# A FREE AND FED AMERICA



## America Is In Crisis... But You Can Make A Difference

We work tirelessly to be an important resource for information regarding issues that impact animal ownership and property rights so people can take action and get involved. Keeping the public up-to-date on the activities of animal and environmental extremist groups is the first part of our organization's mission statement. This includes zoning and land use rules; and regulations that are infringing on farms, ranches, and animal owners. With that in mind, we have created a resource page on our website that can make taking action easy. The materials we have created provide you with information and steps to be proactive (Part 1) and steps you can take if you find you need to take action (Part 2).

Visit Our Website Under "Get Involved"  
[www.ProtectTheHarvest.com](http://www.ProtectTheHarvest.com)

Protect The Harvest is a Nonprofit, 501 (c)(3) Corporation  
480 Southpoint Circle, Brownsburg, IN 46112  
(844) 360-8300 • [www.protecttheharvest.com](http://www.protecttheharvest.com)



# TURNING UP THE HEAT AT LUCAS CATTLE CO.



**SSF BLK LOUISE Y534**



**HOOK'S EVITA 18E**



**HOOK'S FANTASIA 94F**



**BROWN MS QUANAH 505B**

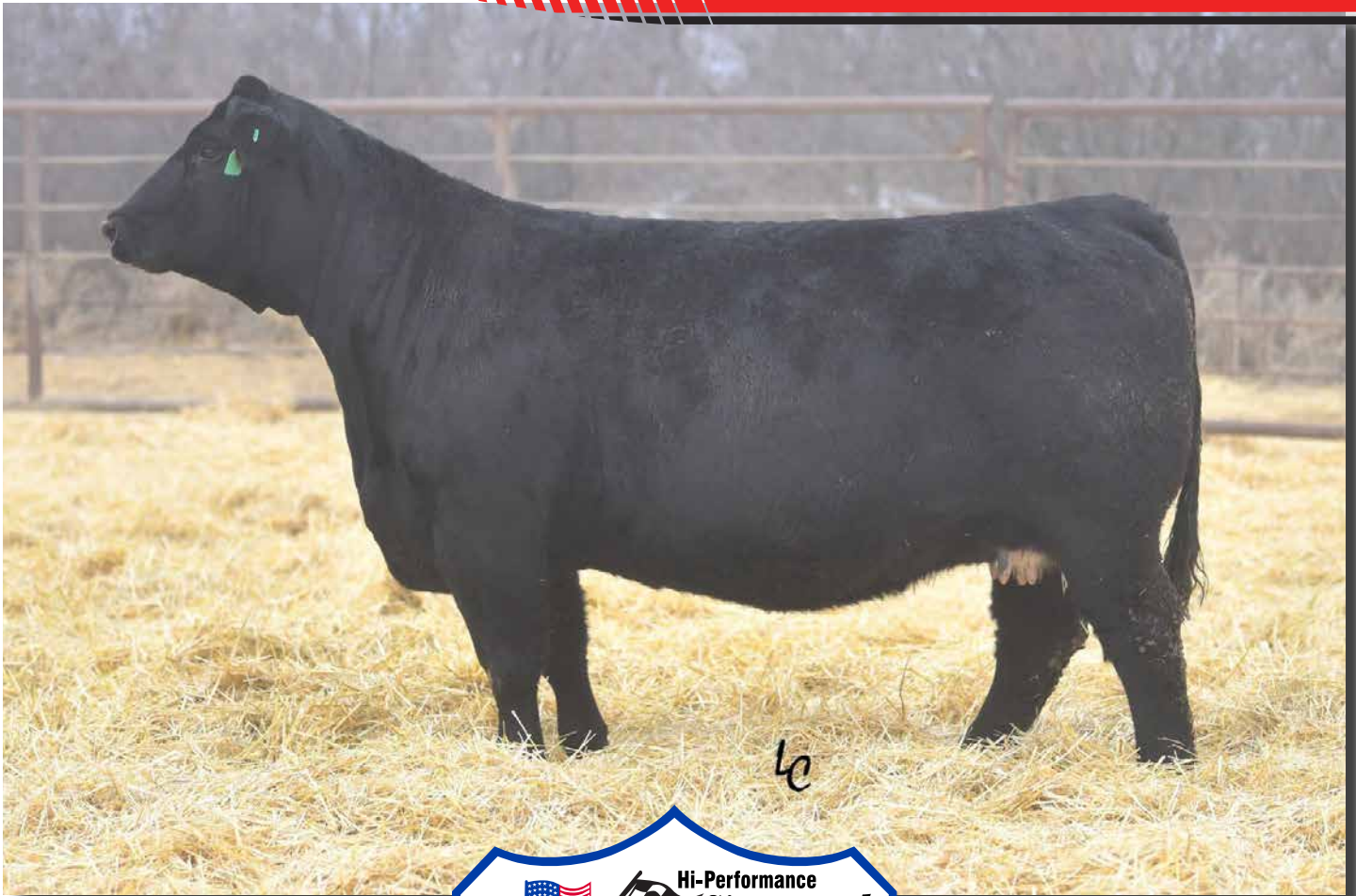


**ADV MS GENESIS J1017**

Be on the lookout for important and impactful changes to the genetic program at Lucas Cattle Company! No, the basics won't change. Sustainable genetics based on regional, fescue resources and a commitment to making cattle easier to raise and profit from will always be the charge at Lucas Cattle, but new commitments to genetic and reproductive technologies are in place for the future.

In addition to high profile changes, like the procurement of the legendary WS Sugar C4 donor, Lucas Cattle Company started this past fall on an ambitious program to incorporate more than 500 embryos annually from some of the highest genetic value females this industry has to offer. The goal is to move forward more quickly and to insure better cattle and better beef. Advancement and balance are key. These matings utilize the most advanced selection tools available to insure progress in an array of production crucial, maternally sustainable and end product traits. That combination of cost reduction and value promotion are designed to deliver profit to their core customers and the larger beef industry, thus promoting the success of rural America. These matings represent one of the largest and most focused efforts in this business to make a difference. Follow along closely to all of the happenings at Lucas Cattle Company and join the effort to be better and more profitable for years to come.

**LOOK FOR PROGENY OUT OF THESE IMPRESSIVE DONORS SOON.**



CE	BW	WW	YW	ADG	MILK	MWW
16.4	-1.2	91.7	140.5	0.31	8.3	27.8



STAY	DOC	YG	MARB	RE	SAPI	STI
18.2	17.3	-0.29	0.65	0.90	181.4	104.5

Home of the Great

# WS MISS SUGAR C4

The Highest-Producing, Most Genetically-Significant  
Simmental Donor in Modern History!

# Improved Buying Confidence with Greater Genomic **ASSURANCE**

Access to more and better information has always been key to making wise decisions. The evolution and improvement of genetic evaluation tools too has given us an ever-clearer picture of the true genetic makeup of cattle and thus a better view of the value proposition. RightMate, powered by Top Genomics LLC is taking the evaluation of genetics and genomics one giant step further. By combining specific genomic information with the long-proven value of EPDs, this new advancement in technology improves our depth and precision when evaluating the actual ability to transmit value and profit.

The 3 Accreditation Logos below are designed to simplify bull selection and improve buyer confidence by more accurately describing the genetics offered and by reducing risk. What this means to you as a customer is a much greater assurance that you are getting both what you want and need from the genetics you purchase. What it means to your seedstock provider is access to RightMate technology that simply sets them apart from the rest of the industry.



**ACCREDITED GENOMIC PLUS** – For the majority of producers who simply need consistent and balanced genetic improvement, without genomic setbacks, G+ Accredited bulls should be on your list for premium purchase. These sires will absolutely move you forward for both cost reduction and income producing traits and substantially reduce risk when compared to all other evaluation programs. It's simple, the right genes are in these bulls to help secure a profitable future and they have great EPDs to match!



**ACCREDITED CALVING EASE** – Simply find bulls with the ACE logo for third party Accredited, secure Calving Ease bulls. Though we have had tools in the past to assist in choosing heifer bulls, we've never had one nearly this effective. The reduced risk that comes with this genomic certification will simply make your decisions easier and your heifer calving season more successful. Purchase special purpose ACE bulls with confidence. They will deliver consistent and predictable calving ease.



**ACCREDITED TERMINAL MATE** – Just like an ATM machine makes it simpler to access your cash, the ATM Logo highlights bulls accredited to generate extra cash income as soon as your next calf crop! These bulls are meant specifically to use only on mature cows and for the purpose of adding performance, pay weight and end product value to market.





## FROM THE SALE MANAGER



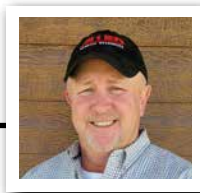
Welcome to the Lucas Cattle Company Spring Bull and Female Sale. Nearly 30 years of producing successful genetics is represented in this powerful set of bulls and females. Lucas Cattle Company is committed with supplying customers with the very best genetics who will excel in not only the fescue belt, but nationwide. Rigorous performance testing, DNA testing, and Rightchoice genetic screening is represented in every lot. If you have not had a chance to stop by the beautiful Lucas ranch, we encourage you to do so.

What a great time to be in the beef business with all classes of cattle receiving record prices not seen in the past. The continued demand for quality US premium beef and dwindling cowherd our country has to offer is setting up for continued financial success for cattlemen in the future. The opportunity to step up your genetic program has never been better.

When potential buyers purchase from Lucas Cattle Company buyers are purchasing from an operation who has your best interest in mind. Lucas Cattle Company is the nations largest Simmental and SimAngus program and the bull crop represents only the cream of the crop. The operation would like nothing more to earn your business and become an allied in the beef business with customers. Affordable delivery, a strong warranty and satisfaction guarantee is represented in every lot.

We hope you can join us the second Saturday in April to view a wonderful set of bulls and females. If you cannot be with us on sale weekend, be sure to join us on DVauctions.com. As always if we can be any assistance, please do not hesitate in reaching out to us.

Sincerely,  
*Marty Ropp, Corey Wilkins and Jared Murnin*



# HIGH-PERFORMANCE BULLS



LUCAS LIMITED EDITION L200 Sells as Lot 1.



LCDR MS JADE 2J Dam of Lots 1-3.



LOT  
**1**

## LUCAS LIMITED EDITION L200

Homo Black || Homo Polled PB SM  
1/1/2023 L200 ASA# 4204048

<b>BW</b>	<b>WW RATIO</b>	<b>GGP</b>	<b>G+</b>
90	100		

HOOK'S BEACON 56B HHS MR ENTOURAGE 867B  
**CLRS GUARDIAN 317G** **LCDR MS JADE 2J**  
 CLRS ALWAYS XCELLENT WS MISS SUGAR C4

	CE	BW	WW	YW	ADG	MCE	MILK	MWW
EPD	16.2	-1.7	103.5	158.0	0.34	9.0	26.6	78.3
Rank	10	10	2	2	10	10	25	3
	STAY	DOC	CW	YG	MARB	REA	SAPI	STI
EPD	17.5	6.8	55.2	-0.37	0.88	1.42	198.5	118.2
Rank	30	95	2	60	1	1	1	1



LUCAS LIFE GUARD L201 Sells as Lot 2.

**LOT 2 LUCAS LIFE GUARD L201**

Homo Black || Homo Polled PB SM  
 1/3/2023 L201 ASA# 4204050

<b>BW</b>	<b>WW RATIO</b>	<b>GGP</b>	<b>G+</b>	<b>ATM</b>
70	100			

HOOK'S BEACON 56B HHS MR ENTOURAGE 867B  
 CLRS GUARDIAN 317G LCDR MS JADE 2J  
 CLRS ALWAYS XCELLENT WS MISS SUGAR C4

	CE	BW	WW	YW	ADG	MCE	MILK	MWW
EPD	13.8	-2.9	91.0	132.6	0.26	7.6	26.6	72.0
Rank	20	3	15	20	40	25	25	15
	STAY	DOC	CW	YG	MARB	REA	SAPI	STI
EPD	19.6	2.3	54.7	-0.32	0.58	1.23	178.6	103.5
Rank	10	99	2	80	5	4	3	2

**LOT 3 LUCAS LETTERMAN L203**

Homo Black || Homo Polled PB SM  
 1/9/2023 L203 ASA# 4204054

<b>BW</b>	<b>WW RATIO</b>	<b>GGP</b>	<b>G+</b>
75	100		

HOOK'S EAGLE 6E HHS MR ENTOURAGE 867B  
 TJ GOLD 274G LCDR MS JADE 2J  
 TJ 12C WS MISS SUGAR C4

	CE	BW	WW	YW	ADG	MCE	MILK	MWW
EPD	16.7	-2.7	85.1	128.5	0.27	9.4	24.1	66.5
Rank	5	3	25	25	35	10	45	30
	STAY	DOC	CW	YG	MARB	REA	SAPI	STI
EPD	17.1	14.3	29.1	-0.30	0.63	0.96	178.4	101.5
Rank	35	20	45	85	4	35	3	3

**DVAuction**  
 Broadcasting Real-Time Auctions

**WATCH AND BID ONLINE FOR FREE**

[www.DVAuction.com](http://www.DVAuction.com)

support@dvauction.com

402-316-5460 || 402-474-5557

# HIGH-PERFORMANCE BULLS



LUCAS LOCOMOTIVE L212 Sells as Lot 4.

LOT  
**4**

## LUCAS LOCOMOTIVE L212

Homo Black || Polled 1/2 SM 1/2 AN  
1/29/2023 L212 ASA# 4204064

<b>BW</b>		<b>WW RATIO</b>		<b>GGP</b>				
83		108						
MUSGRAVE AVIATOR 4M ACE 709 KGM ENCHANTRESS 4054				LUCAS MR. B174 LUCAS MISS F366 LUCAS LADY 917W				
EPD	<b>10.9</b>	<b>0.9</b>	<b>90.9</b>	<b>149.6</b>	<b>0.37</b>	<b>8.0</b>	<b>31.5</b>	<b>77.2</b>
Rank	75	70	10	5	4	35	10	3
EPD	<b>16.5</b>	<b>11.6</b>	<b>64.0</b>	<b>-0.08</b>	<b>0.52</b>	<b>0.74</b>	<b>149.2</b>	<b>93.2</b>
Rank	30	65	2	90	30	40	25	15



LUCAS LEGITIMIT L207 Sells as Lot 5.

LOT  
**5**

## LUCAS LEGITIMIT L207

Homo Black || Polled 1/2 SM 1/2 AN  
1/28/2023 L207 ASA# 4204059

<b>BW</b>		<b>WW RATIO</b>		<b>GGP</b>				
75		125						
MUSGRAVE AVIATOR 4M ACE 709 KGM ENCHANTRESS 4054				LUCAS MR. A643 LUCAS MISS E667 LUCAS MISS B48				
EPD	<b>17.8</b>	<b>-1.8</b>	<b>97.7</b>	<b>152.3</b>	<b>0.34</b>	<b>12.4</b>	<b>36.1</b>	<b>85.3</b>
Rank	10	20	3	4	10	2	1	1
EPD	<b>16.1</b>	<b>12.2</b>	<b>55.2</b>	<b>-0.11</b>	<b>0.42</b>	<b>0.82</b>	<b>157.9</b>	<b>98.9</b>
Rank	35	55	10	85	45	30	15	4



LUCAS LANDLORD L257 Sells as Lot 6.

LOT  
**6**

## LUCAS LANDLORD L257

Homo Black || Polled 1/2 SM 1/2 AN  
2/7/2023 L257 ASA# 4204109

<b>BW</b>		<b>WW RATIO</b>		<b>GGP</b>				
92		122						
MUSGRAVE AVIATOR 4M ACE 709 KGM ENCHANTRESS 4054				LUCAS MR. B174 LUCAS MISS F360 LUCAS MISS A646				
EPD	<b>10.7</b>	<b>1.7</b>	<b>89.4</b>	<b>145.3</b>	<b>0.35</b>	<b>6.4</b>	<b>34.7</b>	<b>79.6</b>
Rank	75	80	10	10	10	60	2	2
EPD	<b>11.2</b>	<b>12.0</b>	<b>63.2</b>	<b>-0.16</b>	<b>0.30</b>	<b>0.82</b>	<b>124.5</b>	<b>86.4</b>
Rank	85	55	2	70	65	30	70	30



LUCAS LEONARDO L224 Sells as Lot 7.

LOT  
**7**

## LUCAS LEONARDO L224

Homo Black || Polled 1/2 SM 1/2 AN  
2/1/2023 L224 ASA# 4204076

<b>BW</b>		<b>WW RATIO</b>		<b>GGP</b>				
97		95						
MUSGRAVE AVIATOR 4M ACE 709 KGM ENCHANTRESS 4054				CCR COWBOY CUT 5048Z LUCAS MISS F226 LUCAS MISS A608				
EPD	<b>8.7</b>	<b>1.8</b>	<b>98.8</b>	<b>159.7</b>	<b>0.38</b>	<b>6.4</b>	<b>21.9</b>	<b>71.6</b>
Rank	95	85	2	2	3	60	70	15
EPD	<b>10.9</b>	<b>12.3</b>	<b>62.0</b>	<b>-0.03</b>	<b>0.55</b>	<b>0.64</b>	<b>137.3</b>	<b>95.8</b>
Rank	85	55	2	95	25	60	45	10

LOT  
**8**

## LUCAS LAKOTA L230

Hetero Black || Polled 1/2 SM 1/2 AN  
2/2/2023 L230 ASA# 4204082

BW	WW RATIO	XGGP
86	93	

MUSGRAVE AVIATOR LUCAS BULL FORCE  
4M ACE 709 LUCAS MISS D487  
KGM ENCHANTRESS 4054 WRC MISS LUCKY DICE R515

	CE	BW	WW	YW	ADG	MCE	MILK	MWW
EPD	10.2	0.7	85.2	140.2	0.34	8.9	27.0	69.8
Rank	80	65	20	15	10	20	25	20
	STAY	DOC	CW	YG	MARB	REA	\$API	\$TI
EPD	11.8	9.4	47.6	-0.07	0.32	0.55	125.8	84.3
Rank	80	85	15	90	60	75	65	40



LUCAS LAKOTA L230 Sells as Lot 8.

LOT  
**9**

## LUCAS LUNKER L221

Homo Black || Polled 1/2 SM 1/2 AN  
2/1/2023 L221 ASA# 4204073

BW	WW RATIO	XGGP
86	97	

MUSGRAVE AVIATOR ELLINGSON DOMINATOR W905  
4M ACE 709 LUCAS MISS C9  
KGM ENCHANTRESS 4054 LUCAS MISS A49

	CE	BW	WW	YW	ADG	MCE	MILK	MWW
EPD	14.4	0.5	82.7	132.8	0.31	10.3	24.2	65.8
Rank	30	60	25	25	25	10	50	35
	STAY	DOC	CW	YG	MARB	REA	\$API	\$TI
EPD	15.3	9.3	48.9	-0.19	0.19	0.69	130.2	80.3
Rank	45	85	15	60	80	50	60	55



LUCAS LUNKER L221 Sells as Lot 9.

LOT  
**10**

## LUCAS LINEMAN L8

Hetero Black || Polled 1/2 SM 1/2 AN  
1/15/2023 L8 ASA# 4203970

BW	WW RATIO	XGGP	G+
68	102		

BALDRIDGE COLONEL C251 LUCAS MR. 12D  
WOODHILL PATENT LUCAS MISS J60  
WOODHILL EVERGREEN Y10-C62 LUCAS MISS 725F

	CE	BW	WW	YW	ADG	MCE	MILK	MWW
EPD	16.8	-1.3	89.7	152.3	0.39	10.4	28.4	73.2
Rank	15	30	10	4	2	10	20	10
	STAY	DOC	CW	YG	MARB	REA	\$API	\$TI
EPD	14.1	11.0	57.3	0.01	0.59	0.49	159.8	97.2
Rank	60	70	4	99	20	85	15	5



LUCAS LINEMAN L8 Sells as Lot 10.

LOT  
**11**

## LUCAS LICENSED L25

Homo Black || Polled 1/2 SM 1/2 AN  
1/19/2023 L25 ASA# 4203986

BW	WW RATIO	XGGP	ATM
85	104		

BALDRIDGE COLONEL C251 LUCAS SINGLE OPTION  
WOODHILL PATENT LUCAS MISS J860  
WOODHILL EVERGREEN Y10-C62 LUCAS MISS 242C

	CE	BW	WW	YW	ADG	MCE	MILK	MWW
EPD	10.0	1.5	98.2	167.1	0.43	7.4	30.6	79.6
Rank	85	80	2	1	1	45	10	2
	STAY	DOC	CW	YG	MARB	REA	\$API	\$TI
EPD	13.1	16.6	58.0	-0.02	0.41	0.60	138.1	94.1
Rank	70	10	4	95	45	65	45	10



LUCAS LICENSED L25 Sells as Lot 11.

# HIGH-PERFORMANCE BULLS



LUCAS LOCKED IN L19 Sells as Lot 12.

LOT  
**12**

## LUCAS LOCKED IN L19

Homo Black || Polled 1/2 SM 1/2 AN  
1/19/2023 L19 ASA# 4203981

<b>BW</b>		<b>WW RATIO</b>		<b>GGP</b>				
80		104						
BALDRIDGE COLONEL C251 WOODHILL PATENT WOODHILL EVERGREEN Y10-C62				LUCAS SINGLE OPTION LUCAS MISS J978 LUCAS MISS E870				
EPD	<b>12.6</b>	<b>0.0</b>	<b>97.3</b>	<b>173.0</b>	<b>0.47</b>	<b>8.4</b>	<b>29.5</b>	<b>78.1</b>
Rank	50	50	3	1	1	30	15	3
EPD	<b>10.8</b>	<b>14.4</b>	<b>61.6</b>	<b>0.03</b>	<b>0.43</b>	<b>0.55</b>	<b>141.2</b>	<b>96.4</b>
Rank	85	25	3	99	40	75	40	10

LOT  
**13**

## LUCAS LOOK RIGHT L57

Homo Black || Homo Polled 1/2 SM 1/2 AN  
1/24/2023 L57 ASA# 4204018

<b>BW</b>		<b>WW RATIO</b>		<b>GGP</b>				
61		96						
O C C EMBLAZON 854E O C C JUST RIGHT 619J O C C JUANADA 709V				LUCAS MR. F20 LUCAS MISS J67 LUCAS MISS G603				
EPD	<b>18.5</b>	<b>-1.6</b>	<b>61.2</b>	<b>95.5</b>	<b>0.21</b>	<b>6.4</b>	<b>22.2</b>	<b>52.8</b>
Rank	5	25	95	90	85	60	65	90
EPD	<b>13.3</b>	<b>12.6</b>	<b>23.2</b>	<b>-0.07</b>	<b>0.38</b>	<b>0.40</b>	<b>135.2</b>	<b>73.9</b>
Rank	70	50	80	90	50	95	50	75

LUCAS LOOK RIGHT L57 Sells as Lot 13.

LOT  
**14**

## LUCAS LAMONT L223

Homo Black || Polled 1/2 SM 1/2 AN  
2/1/2023 L223 ASA# 4204075

<b>BW</b>		<b>WW RATIO</b>		<b>GGP</b>				
63		100						
CONNEALY LEGENDARY 644L LUCAS MR. 410F LUCAS MISS 276A				SPRING COVE PAYGRADE 5064 LUCAS MISS H111 LUCAS MISS D374				
EPD	<b>12.7</b>	<b>-2.6</b>	<b>70.9</b>	<b>109.7</b>	<b>0.24</b>	<b>6.8</b>	<b>31.6</b>	<b>68.4</b>
Rank	50	15	70	70	70	55	10	25
EPD	<b>15.1</b>	<b>13.1</b>	<b>26.7</b>	<b>-0.07</b>	<b>0.48</b>	<b>0.21</b>	<b>142.8</b>	<b>83.9</b>
Rank	50	40	70	90	35	99	35	40

LOT  
**15**

## LUCAS LOGISTIC L48

Hetero Black || Homo Polled 5/8 SM 1/4 AR 1/8 AN  
1/22/2023 L48 ASA# 4204009

<b>BW</b>		<b>WW RATIO</b>		<b>GGP</b>				
94		102						
TJ DIPLOMAT 294D HOOK'S FULL FIGURES 11F HOOK'S DOCILA 23D				ANDRAS FUSION R236 LUCAS MISS J17 LUCAS MISS G648				
EPD	<b>12.3</b>	<b>2.5</b>	<b>90.3</b>	<b>148.4</b>	<b>0.36</b>	<b>7.3</b>	<b>27.5</b>	<b>72.6</b>
Rank	55	90	10	10	10	45	25	10
EPD	<b>17.8</b>	<b>12.5</b>	<b>47.1</b>	<b>-0.27</b>	<b>0.41</b>	<b>0.90</b>	<b>145.3</b>	<b>88.8</b>
Rank	20	50	15	35	45	20	35	25



LUCAS LINEBACKER L26 Sells as Lot 16.

LOT  
**16**

## LUCAS LINEBACKER L26

Homo Black || Polled 5/8 SM 3/8 AN  
1/19/2023 L26 ASA# 4203987

<b>BW</b>		<b>WW RATIO</b>		<b>GGP</b>				
72		112						
TJ DIPLOMAT 294D HOOK'S FULL FIGURES 11F HOOK'S DOCILA 23D				LUCAS MR. F220 LUCAS MISS J678 LUCAS MISS F3				
EPD	<b>17.8</b>	<b>-3.4</b>	<b>83.0</b>	<b>142.4</b>	<b>0.37</b>	<b>11.8</b>	<b>28.8</b>	<b>70.2</b>
Rank	10	10	25	10	4	3	15	15
EPD	<b>15.9</b>	<b>14.2</b>	<b>31.6</b>	<b>-0.19</b>	<b>0.53</b>	<b>0.74</b>	<b>163.3</b>	<b>95.1</b>
Rank	40	30	55	60	25	40	10	10

# HIGH-PERFORMANCE BULLS

## LOT 17 LUCAS LLOYD L433

Homo Black || Polled 5/8 SM 3/8 AN  
3/5/2023 L433 ASA# 4204289

**BW** 88 **WW RATIO** 117 **GGP**

CCR PAYDAY 0320C LUCAS MR. E41  
**LUCAS MR. 241G** LUCAS MISS H193  
LUCAS MS CINDY W145 LUCAS MISS E794

	CE	BW	WW	YW	ADG	MCE	MILK	MWW
EPD	10.9	3.2	85.5	128.6	0.27	6.9	30.1	72.8
Rank	75	95	20	30	50	50	10	10
	STAY	DOC	CW	YG	MARB	REA	\$API	\$TI
EPD	16.4	14.5	31.6	-0.18	-0.03	0.66	110.0	72.7
Rank	35	25	55	65	99	55	90	80

## LOT 18 LUCAS LINCOLN L391

Homo Black || Polled 5/8 SM 3/8 AN  
2/28/2023 L391 ASA# 4204248

**BW** 98 **WW RATIO** 112 **GGP** **G+**

CONNELY LEGENDARY 644L LUCAS MR. C29  
**LUCAS MR. 410F** LUCAS MISS H300  
LUCAS MISS 276A LUCAS LADY X207

	CE	BW	WW	YW	ADG	MCE	MILK	MWW
EPD	10.4	1.8	77.4	115.9	0.24	5.1	27.6	67.2
Rank	80	85	45	55	70	80	25	25
	STAY	DOC	CW	YG	MARB	REA	\$API	\$TI
EPD	20.5	10.7	14.8	-0.23	0.39	0.47	140.7	80.1
Rank	4	75	95	50	50	85	40	55

## LOT 19 LUCAS LOVERBOY L316

Homo Black || Polled 5/8 SM 3/8 AN  
2/18/2023 L316 ASA# 4204172

**BW** 76 **WW RATIO** 95 **GGP** **ATM**

DEER VALLEY FOX TROT 5327 LUCAS SINGLE OPTION  
**LUCAS MR. 472H** LUCAS MISS H349  
LUCAS MISS 260E LUCAS MISS A619

	CE	BW	WW	YW	ADG	MCE	MILK	MWW
EPD	10.8	2.1	95.6	153.3	0.36	6.0	19.7	68.0
Rank	75	85	4	4	10	65	85	25
	STAY	DOC	CW	YG	MARB	REA	\$API	\$TI
EPD	13.5	12.2	51.4	-0.15	0.39	0.75	135.5	90.4
Rank	65	55	10	75	50	40	50	20

## LOT 20 LUCAS LATYMER L475

Homo Black || Polled 5/8 SM 3/8 AN  
3/12/2023 L475 ASA# 4204331

**BW** 86 **WW RATIO** 114 **GGP** **G+** **ATM**

DEER VALLEY FOX TROT 5327 LUCAS MR. E752  
**LUCAS MR. 472H** LUCAS MISS H252  
LUCAS MISS 260E LUCAS LADY 903W

	CE	BW	WW	YW	ADG	MCE	MILK	MWW
EPD	13.9	1.3	93.7	143.6	0.31	8.6	26.7	73.7
Rank	35	75	5	10	25	25	30	10
	STAY	DOC	CW	YG	MARB	REA	\$API	\$TI
EPD	17.1	12.3	26.5	-0.13	0.34	0.43	142.7	89.2
Rank	25	55	75	80	55	90	35	25

## LOT 21 LUCAS LOYALIST L267

Homo Black || Polled 5/8 SM 3/8 AN  
2/8/2023 L267 ASA# 4204120

**BW** 84 **WW RATIO** 97 **GGP** **G+**

DEER VALLEY FOX TROT 5327 LUCAS SINGLE OPTION  
**LUCAS MR. 472H** LUCAS MISS H224  
LUCAS MISS 260E LUCAS MISS C690

	CE	BW	WW	YW	ADG	MCE	MILK	MWW
EPD	14.6	-0.7	81.2	131.7	0.32	9.2	21.0	62.0
Rank	30	35	30	25	20	20	75	50
	STAY	DOC	CW	YG	MARB	REA	\$API	\$TI
EPD	15.7	9.6	37.8	-0.12	0.37	0.61	142.8	85.0
Rank	40	85	35	80	50	65	35	35



## LOT 22 LUCAS LIONEL L278

Homo Black || Polled 5/8 SM 3/8 AN  
2/11/2023 L278 ASA# 4204130

**BW** 88 **WW RATIO** 99 **GGP**

DEER VALLEY FOX TROT 5327 LUCAS MR. F19  
**LUCAS MR. 472H** LUCAS MISS H208  
LUCAS MISS 260E LUCAS MISS E857

	CE	BW	WW	YW	ADG	MCE	MILK	MWW
EPD	13.2	-1.0	77.1	128.5	0.32	8.3	22.9	62.2
Rank	45	35	45	30	20	30	60	50
	STAY	DOC	CW	YG	MARB	REA	\$API	\$TI
EPD	13.9	12.2	40.7	-0.16	0.40	0.91	138.6	84.0
Rank	60	55	30	70	45	15	45	40



# HIGH-PERFORMANCE BULLS



LUCAS LEATHERNECK L249 Sells as Lot 23.

LOT  
**23**

## LUCAS LEATHERNECK L249

Homo Black || Polled 5/8 SM 3/8 AN  
2/6/2023 L249 ASA# 4204101

BW		WW RATIO		⚡GGP		ATM	
86		111					
CCR PAYDAY 0320C				WS ALL-AROUND Z35			
LUCAS MR. 241G				LUCAS MISS H59			
LUCAS MS CINDY W145				LUCAS MISS F320			
CE	BW	WW	YW	ADG	MCE	MILK	MWW
11.6	1.0	82.9	122.4	0.25	6.4	28.5	69.8
Rank 65	70	25	40	60	60	20	20
STAY	DOC	CW	YG	MARB	REA	\$API	\$TI
18.5	13.8	32.9	-0.10	0.22	0.35	131.1	79.5
Rank 15	35	50	85	75	95	55	60



LUCAS LOWRY L310 Sells as Lot 24.

LOT  
**24**

## LUCAS LOWRY L310

Homo Black || Polled 5/8 SM 3/8 AN  
2/18/2023 L310 ASA# 4204164

BW		WW RATIO		⚡GGP		G+	
82		92					
DEER VALLEY FOX TROT 5327				LUCAS MR. F220			
LUCAS MR. 472H				LUCAS MISS H116			
LUCAS MISS 260E				LUCAS MISS E838			
CE	BW	WW	YW	ADG	MCE	MILK	MWW
17.1	-1.9	70.7	113.1	0.26	10.2	23.0	58.8
Rank 10	20	70	60	55	10	60	65
STAY	DOC	CW	YG	MARB	REA	\$API	\$TI
19.3	11.9	27.8	-0.15	0.34	0.64	148.8	79.6
Rank 10	60	70	75	55	60	30	60

LOT  
**25**

## LUCAS LOWELL L474

Hetero Black || Polled 5/8 SM 3/8 AN  
3/12/2023 L474 ASA# 4204330

BW		WW RATIO		⚡GGP			
87		107					
E&B PLUS ONE				LUCAS MR. A635			
LUCAS MR. J697				LUCAS MISS F394			
LUCAS MISS Z590				LUCAS MISS A786			
CE	BW	WW	YW	ADG	MCE	MILK	MWW
12.9	-2.4	59.8	93.9	0.21	7.8	35.1	65.2
Rank 50	15	95	95	85	35	1	35
STAY	DOC	CW	YG	MARB	REA	\$API	\$TI
14.9	15.0	26.9	-0.30	0.28	0.95	128.4	73.5
Rank 50	20	70	30	65	15	60	80



LUCAS LOADED L21 Sells as Lot 27.

LOT  
**26**

## LUCAS LAPUA L338

Hetero Black || Polled 5/8 SM 3/8 AN  
2/21/2023 L338 ASA# 4204194

BW		WW RATIO		⚡GGP			
75		97					
E&B PLUS ONE				LUCAS MR. C799			
LUCAS MR. J697				LUCAS MISS F286			
LUCAS MISS Z590				LUCAS MISS 459B			
CE	BW	WW	YW	ADG	MCE	MILK	MWW
15.5	-2.7	56.5	86.8	0.19	8.2	32.2	60.6
Rank 20	15	99	99	95	30	4	60
STAY	DOC	CW	YG	MARB	REA	\$API	\$TI
15.2	12.3	17.5	-0.17	0.24	0.40	128.1	70.0
Rank 45	55	95	70	75	95	60	90

LOT  
**27**

## LUCAS LOADED L21

Homo Black || Homo Polled PB SM  
1/19/2023 L21 ASA# 4203983

BW		WW RATIO		⚡GGP		G+	
79		91					
TJ TEARDROP 783F				JBS BIG CASINO 336Y			
TJ 50K 485H				LUCAS MISS J8			
TJ 92C				LUCAS MISS G689			
CE	BW	WW	YW	ADG	MCE	MILK	MWW
14.4	-1.0	77.4	122.1	0.28	6.8	24.4	63.1
Rank 15	15	55	40	30	35	40	45
STAY	DOC	CW	YG	MARB	REA	\$API	\$TI
18.6	11.3	33.2	-0.32	0.09	0.84	143.9	81.5
Rank 20	55	30	80	70	60	35	45



# HIGH-PERFORMANCE BULLS

## LOT 28 LUCAS LEGAL TENDER L58

Homo Black || Polled 3/4 SM 7/32 AN 1/32 CS  
1/24/2023 L58 ASA# 4204019

<b>BW</b>	<b>WW RATIO</b>	<b>GGP</b>	<b>G+</b>	<b>ACF</b>
69	88			

TJ TEARDROP 783F LUCAS MR. E39  
TJ 50K 485H LUCAS MISS J891  
TJ 92C LUCAS MISS Z773

	CE	BW	WW	YW	ADG	MCE	MILK	MWW
EPD	14.8	-0.9	64.7	93.0	0.18	7.0	29.5	61.8
Rank	25	35	90	95	95	50	15	55
	STAY	DOC	CW	YG	MARB	REA	\$API	\$TI
EPD	21.1	14.6	16.4	-0.12	0.26	0.34	138.5	72.3
Rank	3	25	95	80	70	95	45	80

## LOT 29 LUCAS LAWBREAKER L56

Homo Black || Polled 3/4 SM 1/4 AN  
1/23/2023 L56 ASA# 4204017

<b>BW</b>	<b>WW RATIO</b>	<b>GGP</b>
90	104	

TJ TEARDROP 783F LUCAS MR. F231  
TJ 50K 485H LUCAS MISS J758  
TJ 92C LUCAS MISS F500

	CE	BW	WW	YW	ADG	MCE	MILK	MWW
EPD	10.1	2.3	75.8	106.0	0.19	6.7	33.0	71.5
Rank	85	90	50	75	95	55	3	15
	STAY	DOC	CW	YG	MARB	REA	\$API	\$TI
EPD	19.9	7.0	36.0	-0.32	0.30	0.90	131.4	76.6
Rank	5	95	40	25	65	20	55	70

## LOT 30 LUCAS LIFTOFF L63

Homo Black || Polled PB SM  
1/27/2023 L63 ASA# 4204024

<b>BW</b>	<b>WW RATIO</b>	<b>GGP</b>	<b>ATM</b>
87	108		

TJ TEARDROP 783F LUCAS MR. F231  
TJ 50K 485H LUCAS MISS J757  
TJ 92C LUCAS MISS F366

	CE	BW	WW	YW	ADG	MCE	MILK	MWW
EPD	8.4	1.0	75.0	105.7	0.19	4.4	34.6	72.7
Rank	90	45	65	75	90	80	1	10
	STAY	DOC	CW	YG	MARB	REA	\$API	\$TI
EPD	19.6	14.0	33.1	-0.16	0.39	0.62	146.2	83.5
Rank	10	25	30	99	20	95	30	40



LUCAS LIFTOFF L63 Sells as Lot 30.

## LOT 31 LUCAS LAWYER L53

Hetero Black || Polled 3/4 SM 1/4 AN  
1/21/2023 L53 ASA# 4204014

<b>BW</b>	<b>WW RATIO</b>	<b>GGP</b>	<b>G+</b>
84	93		

TJ TEARDROP 783F E&B PLUS ONE  
TJ 50K 485H LUCAS MISS J674  
TJ 92C LUCAS MISS D374

	CE	BW	WW	YW	ADG	MCE	MILK	MWW
EPD	12.1	0.8	81.5	122.7	0.26	6.1	30.4	71.2
Rank	60	65	30	40	55	65	10	15
	STAY	DOC	CW	YG	MARB	REA	\$API	\$TI
EPD	19.3	16.9	40.2	0.03	0.19	0.37	131.1	77.9
Rank	10	10	30	99	80	95	55	65

## LOT 32 LUCAS LANDMARK L32

Homo Black || Polled 3/4 SM 1/4 AN  
1/20/2023 L32 ASA# 4203993

<b>BW</b>	<b>WW RATIO</b>	<b>GGP</b>	<b>G+</b>
81	114		

TJ TEARDROP 783F LSF BRA NO WORRIES 4657B  
TJ 50K 485H LUCAS MISS J19  
TJ 92C LUCAS MISS G610

	CE	BW	WW	YW	ADG	MCE	MILK	MWW
EPD	14.1	1.1	76.1	115.2	0.24	7.2	31.4	69.4
Rank	35	70	50	55	70	45	10	20
	STAY	DOC	CW	YG	MARB	REA	\$API	\$TI
EPD	20.4	12.6	20.8	-0.10	0.25	0.30	137.5	76.9
Rank	4	50	85	85	70	99	45	65

## LOT 33 LUCAS LUCRATIVE L14

Homo Black || Polled PB SM  
1/17/2023 L14 ASA# 4203976

<b>BW</b>	<b>WW RATIO</b>	<b>GGP</b>	<b>G+</b>	<b>ATM</b>
81	118			

TJ TEARDROP 783F LUCAS MR. F231  
TJ 50K 485H LUCAS MISS J927  
TJ 92C LUCAS MISS F469

	CE	BW	WW	YW	ADG	MCE	MILK	MWW
EPD	13.3	0.2	90.3	133.6	0.27	8.3	37.0	82.7
Rank	25	30	15	20	35	15	1	1
	STAY	DOC	CW	YG	MARB	REA	\$API	\$TI
EPD	21.5	12.1	37.5	-0.13	0.34	0.52	162.1	93.7
Rank	3	45	20	99	25	99	10	15



# HIGH-PERFORMANCE BULLS



LUCAS LOOKUP L232 Sells as Lot 34.

LOT  
**34**

## LUCAS LOOKUP L232

Homo Black || Polled 3/4 SM 1/4 AN  
2/3/2023 L232 ASA# 4204084

<b>BW</b>		<b>WW RATIO</b>		<b>⚡GGP</b>				
85		103						
CAMP CAMPBELL E737				SPRING COVE PAYGRADE 5064				
TJ BRUTUS 428H				LUCAS MISS F236				
TJ 5F				DX MISS COMPLETE T748				
	<b>CE</b>	<b>BW</b>	<b>WW</b>	<b>YW</b>	<b>ADG</b>	<b>MCE</b>	<b>MILK</b>	<b>MWW</b>
EPD	12.5	-0.2	68.9	102.0	0.21	6.1	24.0	59.2
Rank	55	45	75	80	85	65	50	65
	<b>STAY</b>	<b>DOC</b>	<b>CW</b>	<b>YG</b>	<b>MARB</b>	<b>REA</b>	<b>\$API</b>	<b>\$TI</b>
EPD	21.1	13.6	29.9	-0.23	0.31	0.75	139.8	75.1
Rank	3	35	60	50	60	40	40	75

LOT  
**35**

## LUCAS LEADERBOARD L251

Homo Black || Polled 3/4 SM 1/4 AN  
2/6/2023 L251 ASA# 4204103

<b>BW</b>		<b>WW RATIO</b>		<b>⚡GGP</b>				<b>G+</b>
80		108						
CAMP CAMPBELL E737				LUCAS MR. B174				
TJ BRUTUS 428H				LUCAS MISS E800				
TJ 5F				LUCAS MISS B400				
	<b>CE</b>	<b>BW</b>	<b>WW</b>	<b>YW</b>	<b>ADG</b>	<b>MCE</b>	<b>MILK</b>	<b>MWW</b>
EPD	12.4	0.4	84.7	136.4	0.32	6.1	26.2	68.4
Rank	55	60	20	20	20	65	35	25
	<b>STAY</b>	<b>DOC</b>	<b>CW</b>	<b>YG</b>	<b>MARB</b>	<b>REA</b>	<b>\$API</b>	<b>\$TI</b>
EPD	20.9	14.3	40.2	-0.25	0.42	0.88	153.1	87.8
Rank	3	30	30	45	45	20	20	30

LUCAS LEADERBOARD L251 Sells as Lot 35.



LUCAS LATITUDE L263 Sells as Lot 36.

LOT  
**36**

## LUCAS LATITUDE L263

Homo Black || Polled 3/4 SM 1/4 AN  
2/2/2023 L263 ASA# 4204116

<b>BW</b>		<b>WW RATIO</b>		<b>⚡GGP</b>				<b>ATM</b>
86		117						
CAMP CAMPBELL E737				HPF OPTIMIZER A512				
TJ BRUTUS 428H				LUCAS MISS G5				
TJ 5F				LUCAS MISS E606				
	<b>CE</b>	<b>BW</b>	<b>WW</b>	<b>YW</b>	<b>ADG</b>	<b>MCE</b>	<b>MILK</b>	<b>MWW</b>
EPD	13.6	0.2	85.7	143.5	0.36	5.8	21.6	64.4
Rank	40	55	20	10	10	70	70	40
	<b>STAY</b>	<b>DOC</b>	<b>CW</b>	<b>YG</b>	<b>MARB</b>	<b>REA</b>	<b>\$API</b>	<b>\$TI</b>
EPD	17.0	13.5	34.2	-0.28	0.26	0.80	140.1	84.9
Rank	25	35	45	35	70	30	40	40

LOT  
**37**

## LUCAS LAWMAN L61

Homo Black || Polled 3/4 SM 1/4 AN  
1/27/2023 L61 ASA# 4204022

<b>BW</b>		<b>WW RATIO</b>		<b>⚡GGP</b>				<b>G+</b>	<b>ATM</b>
86		98							
HOOK'S BEACON 56B				LUCAS MR. E640					
KBHR HONOR H060				LUCAS MISS J849					
WS MISS SUGAR C4				LUCAS MISS 437A					
	<b>CE</b>	<b>BW</b>	<b>WW</b>	<b>YW</b>	<b>ADG</b>	<b>MCE</b>	<b>MILK</b>	<b>MWW</b>	
EPD	12.0	0.8	77.7	123.8	0.29	7.1	25.8	64.5	
Rank	60	65	45	40	35	50	35	40	
	<b>STAY</b>	<b>DOC</b>	<b>CW</b>	<b>YG</b>	<b>MARB</b>	<b>REA</b>	<b>\$API</b>	<b>\$TI</b>	
EPD	16.0	10.1	50.1	-0.28	0.71	1.24	154.8	90.2	
Rank	35	80	10	35	10	1	20	20	

LUCAS LAWMAN L61 Sells as Lot 37.

# HIGH-PERFORMANCE BULLS

## LOT 38 LUCAS LARRY L40

Homo Black || Polled 3/4 SM 1/4 AN  
1/21/2023 L40 ASA# 4204001

BW	WW RATIO	GGP	G+
65	99		

HOOK'S BEACON 56B LUCAS MR. F19  
KBHR HONOR H060 LUCAS MISS J819  
WS MISS SUGAR C4 LUCAS MISS F221

CE	BW	WW	YW	ADG	MCE	MILK	MWW
16.8	-3.0	73.5	113.9	0.25	9.6	27.3	64.2
Rank 15	10	60	60	60	15	25	40
STAY	DOC	CW	YG	MARB	REA	\$API	\$TI
17.5	14.2	24.9	-0.15	0.59	0.56	161.1	89.1
Rank 20	30	75	75	20	75	15	25

## LOT 39 LUCAS LOGO L42

Homo Black || Polled 3/4 SM 1/4 AN  
1/21/2023 L42 ASA# 4204003

BW	WW RATIO	GGP	G+
79	82		

HOOK'S BEACON 56B LUCAS MR. F252  
KBHR HONOR H060 LUCAS MISS J793  
WS MISS SUGAR C4 LUCAS MISS F254

CE	BW	WW	YW	ADG	MCE	MILK	MWW
15.9	-0.4	72.7	117.5	0.28	9.0	25.1	61.5
Rank 20	45	65	50	40	20	40	55
STAY	DOC	CW	YG	MARB	REA	\$API	\$TI
17.3	9.1	46.5	-0.31	0.24	1.07	137.4	77.6
Rank 25	90	15	25	75	5	45	65

## LOT 40 LUCAS LEO L489

Hetero Black || Polled 3/4 SM 1/4 AN  
3/16/2023 L489 ASA# 4204345

BW	WW RATIO	GGP	G+	ATM
80	125			

DEER VALLEY FOX TROT 5327 LUCAS OPTIMAL FORCE  
LUCAS MR. 472H LUCAS MISS H314  
LUCAS MISS 260E LUCAS MISS 188X

CE	BW	WW	YW	ADG	MCE	MILK	MWW
13.2	-0.5	93.0	150.6	0.36	7.7	24.9	71.8
Rank 45	40	10	5	10	40	45	15
STAY	DOC	CW	YG	MARB	REA	\$API	\$TI
15.6	11.4	44.8	-0.19	0.39	0.77	146.5	92.9
Rank 40	65	20	60	50	35	30	15

## LOT 41 LUCAS LENNY L320

Homo Black || Polled 3/4 SM 1/4 AN  
2/19/2023 L320 ASA# 4204176

BW	WW RATIO	GGP	ATM
99	113		

LUCAS MR. 349A LUCAS MR. Z538  
LUCAS MR. 718D LUCAS MISS E843  
LUCAS MISS 159A LUCAS LADY X380

CE	BW	WW	YW	ADG	MCE	MILK	MWW
9.5	3.5	89.5	145.8	0.35	6.2	25.3	70.0
Rank 90	99	10	10	10	65	40	20
STAY	DOC	CW	YG	MARB	REA	\$API	\$TI
13.6	12.7	49.8	-0.14	0.34	0.69	126.4	84.0
Rank 65	45	15	75	55	50	65	40



LUCAS LOCKDOWN L52 Sells as Lot 43.

## LOT 42 LUCAS LEVERAGE L69

Homo Black || Polled 3/4 SM 1/4 AN  
2/9/2023 L69 ASA# 4204030

BW	WW RATIO	GGP	G+	ATM
89	122			

DEER VALLEY FOX TROT 5327 LUCAS MR. 432F  
LUCAS MR. J660 LUCAS MISS J53  
LUCAS MISS B220 LUCAS MISS G636

CE	BW	WW	YW	ADG	MCE	MILK	MWW
8.9	1.3	110.9	173.4	0.39	3.9	29.3	85.1
Rank 90	75	1	1	2	95	15	1
STAY	DOC	CW	YG	MARB	REA	\$API	\$TI
15.2	11.5	62.8	-0.03	0.47	0.59	146.9	102.3
Rank 45	65	2	95	35	70	30	2

## LOT 43 LUCAS LOCKDOWN L52

Homo Black || Homo Polled 3/4 SM 1/4 AN  
1/21/2023 L52 ASA# 4204013

BW	WW RATIO	GGP
85	102	

W/C EXECUTIVE ORDER 8543B LUCAS MR. F220  
W/C DOUBLE DOWN 5014E LUCAS MISS J711  
W/C MISS WERNING 5014C LUCAS MISS F364

CE	BW	WW	YW	ADG	MCE	MILK	MWW
14.5	0.6	70.5	104.5	0.21	6.3	25.0	60.1
Rank 30	60	70	80	85	60	45	60
STAY	DOC	CW	YG	MARB	REA	\$API	\$TI
16.2	9.9	17.4	-0.51	0.05	1.11	119.3	70.3
Rank 35	80	95	1	99	4	75	85

## LOT 44 LUCAS LONGSHOT L215

Homo Black || Polled 3/4 SM 1/4 AN  
1/31/2023 L215 ASA# 4204067

BW	WW RATIO	GGP	G+
89	108		

MCM TOP GRADE 018X LUCAS MR. Z537  
TJ HIGH CALIBRE 556B LUCAS MISS D314  
PRS LADY DONE RIGHT W214 LUCAS MISS Z773

CE	BW	WW	YW	ADG	MCE	MILK	MWW
14.7	-0.5	77.4	117.5	0.25	7.8	27.1	65.8
Rank 30	40	45	50	60	35	25	35
STAY	DOC	CW	YG	MARB	REA	\$API	\$TI
23.0	11.8	30.6	-0.30	0.35	0.73	153.8	82.9
Rank 1	60	60	30	55	45	20	45

# HIGH-PERFORMANCE BULLS



LOT  
**45**

## LUCAS LONGMYER L229

Homo Black || Polled  
2/2/2023 L229 3/4 SM 1/4 AN  
ASA# 4204081

BW	WW RATIO	GGP
70	100	

MCM TOP GRADE 018X  
TJ HIGH CALIBRE 556B  
PRS LADY DONE RIGHT W214  
LUCAS HARD AT IT 423U  
LUCAS MISS 530B  
LUCAS DYNAMITE DESIGN

	CE	BW	WW	YW	ADG	MCE	MILK	MWW
EPD	15.5	-1.4	78.7	127.9	0.31	9.7	26.5	65.8
Rank	20	25	40	30	25	15	30	35
	STAY	DOC	CW	YG	MARB	REA	\$API	\$TI
EPD	22.2	11.0	29.4	-0.21	0.37	0.57	157.3	85.2
Rank	1	70	65	55	50	70	15	35

LOT  
**46**

## LUCAS LEOPOLD L315

Hetero Black || Polled  
2/18/2023 L315 3/4 SM 1/4 AN  
ASA# 4204171

BW	WW RATIO	GGP	G+
78	125		

CONNEALY LEGENDARY 644L  
LUCAS MR. 410F  
LUCAS MISS 276A  
WS RED MOON D76  
LUCAS MISS H16  
LUCAS MISS F378

	CE	BW	WW	YW	ADG	MCE	MILK	MWW
EPD	12.2	-2.4	86.4	128.6	0.26	5.2	31.4	75.2
Rank	60	15	20	30	55	80	10	5
	STAY	DOC	CW	YG	MARB	REA	\$API	\$TI
EPD	15.1	11.3	29.8	-0.24	0.33	0.57	139.7	89.6
Rank	50	65	60	45	60	70	40	20

LOT  
**47**

## LUCAS LUPIN L371

Homo Black || Polled  
2/26/2023 L371 3/4 SM 1/4 AN  
ASA# 4204228

BW	WW RATIO	GGP	ATM
86	129		

LUCAS MR. 349A  
LUCAS MR. 718D  
LUCAS MISS 159A  
LUCAS MR. Z537  
LUCAS MISS G835  
LUCAS MISS A763

	CE	BW	WW	YW	ADG	MCE	MILK	MWW
EPD	10.0	3.2	90.3	143.9	0.33	7.0	31.4	76.4
Rank	85	95	10	10	15	50	10	4
	STAY	DOC	CW	YG	MARB	REA	\$API	\$TI
EPD	14.4	15.3	49.1	-0.39	0.19	1.03	121.8	82.7
Rank	55	20	15	10	80	10	70	45

LOT  
**48**

## LUCAS LANCE L400

Homo Black || Polled  
3/1/2023 L400 3/4 SM 1/4 AN  
ASA# 4204257

BW	WW RATIO	GGP
90	102	

LUCAS MR. 349A  
LUCAS MR. 718D  
LUCAS MISS 159A  
LUCAS MR. Z537  
LUCAS MISS E739  
LUCAS MISS Y19

	CE	BW	WW	YW	ADG	MCE	MILK	MWW
EPD	12.8	1.7	79.5	128.0	0.30	8.4	25.8	65.5
Rank	50	80	40	30	30	30	35	35
	STAY	DOC	CW	YG	MARB	REA	\$API	\$TI
EPD	16.5	12.2	19.9	-0.37	0.23	0.60	130.2	78.7
Rank	30	55	90	15	75	65	60	60

LOT  
**49**

## LUCAS LEROY L341

Homo Black || Polled  
2/22/2023 L341 3/4 SM 1/4 AN  
ASA# 4204197

BW	WW RATIO	GGP	G+
93	113		

BASIN EXCITEMENT  
LUCAS MR. F19  
LUCAS MISS D216  
LUCAS MR. C22  
LUCAS MISS F75  
LUCAS MISS 228C

	CE	BW	WW	YW	ADG	MCE	MILK	MWW
EPD	10.2	1.6	78.8	128.7	0.31	5.1	24.1	63.9
Rank	80	80	40	30	25	80	50	40
	STAY	DOC	CW	YG	MARB	REA	\$API	\$TI
EPD	20.9	14.9	28.5	-0.20	0.47	0.52	148.3	83.2
Rank	3	20	65	60	35	80	30	45

LOT  
**50**

## LUCAS LAWERANCE L349

Hetero Black || Polled  
2/24/2023 L349 3/4 SM 1/4 AN  
ASA# 4204205

BW	WW RATIO	GGP	G+
92	105		

BASIN EXCITEMENT  
LUCAS MR. F19  
LUCAS MISS D216  
LUCAS MR. A695  
LUCAS MISS F339  
LUCAS MISS C14

	CE	BW	WW	YW	ADG	MCE	MILK	MWW
EPD	9.6	1.8	74.4	119.8	0.28	4.6	28.2	65.9
Rank	85	85	55	45	40	85	20	35
	STAY	DOC	CW	YG	MARB	REA	\$API	\$TI
EPD	19.8	14.6	43.7	-0.26	0.36	0.82	136.7	77.9
Rank	10	25	20	40	55	30	45	65

# HIGH-PERFORMANCE BULLS

## LOT 51 LUCAS LIAM L410

Homo Black || Polled 3/4 SM 1/4 AN  
3/2/2023 L410 ASA# 4204266

BW	WW RATIO	ØGGP
94	122	

BASIN EXCITEMENT LUCAS MR. Y47  
LUCAS MR. F19 LUCAS MISS D510  
LUCAS MISS D216 LUCAS MISS Z590

	CE	BW	WW	YW	ADG	MCE	MILK	MWW
EPD	10.0	-1.6	61.6	89.6	0.17	5.2	29.7	60.9
Rank	85	25	95	95	99	80	15	55
	STAY	DOC	CW	YG	MARB	REA	\$API	\$TI
EPD	17.6	14.3	19.1	-0.24	0.34	0.46	130.5	73.2
Rank	20	30	90	45	55	90	60	80

## LOT 52 LUCAS LEXINGTON L366

Homo Black || Polled 3/4 SM 1/4 AN  
2/26/2023 L366 ASA# 4204223

BW	WW RATIO	ØGGP	ATM
88	108		

SPRING COVE PAYGRADE 5064 LUCAS MR. E41  
LUCAS MR. F231 LUCAS MISS G68  
LUCAS MS LUCKY BUCK 575T LUCAS MISS E745

	CE	BW	WW	YW	ADG	MCE	MILK	MWW
EPD	11.2	3.2	81.1	124.0	0.27	7.9	32.5	74.3
Rank	70	95	30	40	50	35	4	10
	STAY	DOC	CW	YG	MARB	REA	\$API	\$TI
EPD	19.7	7.2	40.2	-0.15	0.35	0.69	136.7	79.9
Rank	10	95	30	75	55	50	45	55

## LOT 53 LUCAS LUKE L520

Homo Black || Polled 3/4 SM 1/4 AN  
4/1/2023 L520 ASA# 4204376

BW	WW RATIO	ØGGP	ATM
97	123		

SPRING COVE PAYGRADE 5064 LUCAS MR. 243C  
LUCAS MR. F231 LUCAS MISS G652  
LUCAS MS LUCKY BUCK 575T LUCAS MISS D335

	CE	BW	WW	YW	ADG	MCE	MILK	MWW
EPD	11.4	3.1	86.9	132.8	0.29	6.9	33.5	78.2
Rank	70	95	15	25	35	50	3	3
	STAY	DOC	CW	YG	MARB	REA	\$API	\$TI
EPD	17.3	8.0	54.5	-0.23	0.14	0.89	123.5	78.7
Rank	25	95	10	50	90	20	70	60



LUCAS LUKE L520 Sells as Lot 53.

## LOT 54 LUCAS LOCKSMITH L49

Homo Black || Homo Polled PB SM  
1/22/2023 L49 ASA# 4204010

BW	WW RATIO	ØGGP	G+
80	103		

WS BEEF KING W107 LUCAS MR. 697D  
WS ALL-AROUND Z35 LUCAS MISS J848  
CDI MS HIGH ROLLER 39W LUCAS MISS E855

	CE	BW	WW	YW	ADG	MCE	MILK	MWW
EPD	14.0	-0.7	81.9	120.6	0.24	8.7	24.0	64.9
Rank	20	20	35	40	55	15	45	40
	STAY	DOC	CW	YG	MARB	REA	\$API	\$TI
EPD	22.2	11.8	32.0	-0.23	0.36	0.59	164.0	89.4
Rank	2	50	35	99	20	95	10	20



## LOT 55 LUCAS LOCK ON L279

Homo Black || Polled PB SM  
2/12/2023 L279 ASA# 4204132

BW	WW RATIO	ØGGP	ATM
84	100		

WS BEEF KING W107 BCLR CASH FLOW C820  
WS ALL-AROUND Z35 LUCAS MISS J14  
CDI MS HIGH ROLLER 39W LUCAS MISS G8

	CE	BW	WW	YW	ADG	MCE	MILK	MWW
EPD	14.7	1.8	101.1	160.2	0.37	7.6	17.8	68.3
Rank	15	65	2	2	2	25	90	25
	STAY	DOC	CW	YG	MARB	REA	\$API	\$TI
EPD	13.3	13.2	43.7	-0.50	0.07	1.22	138.3	92.4
Rank	75	35	10	10	75	4	40	15



LUCAS LOCK ON L279 Sells as Lot 55.

# HIGH-PERFORMANCE BULLS

**LOT 56** **LUCAS LOOPHOLE L313**  
 Homo Black || Homo Polled PB SM  
 2/18/2023 L313 ASA# 4204169

<b>BW</b>	<b>WW RATIO</b>	<b>GGP</b>	<b>G+</b>	<b>ACE</b>
80	100			

WS BEEF KING W107 EGL FIRESTEEL 103F  
**WS ALL-AROUND Z35** LCDR MS JILLIAN 37J  
 CDI MS HIGH ROLLER 39W TJ MS 38W

	CE	BW	WW	YW	ADG	MCE	MILK	MWW
EPD	18.5	-1.9	74.6	112.0	0.23	8.9	25.1	62.2
Rank	2	10	65	60	65	10	35	50
	STAY	DOC	CW	YG	MARB	REA	\$API	\$TI
EPD	23.3	15.5	21.0	-0.20	0.39	0.64	173.3	87.8
Rank	1	15	75	99	20	95	4	25



LUCAS LIASON L27 Sells as Lot 58.

**LOT 59** **LUCAS LIVE-WIRE L59**  
 Hetero Black || Polled PB SM  
 1/26/2023 L59 ASA# 4204202

<b>BW</b>	<b>WW RATIO</b>	<b>GGP</b>
85	92	

W/C FORT KNOX 609F LUCAS MR. 432F  
**W/C FORT KNOX 69H HARDWIRE** LUCAS MISS J52  
 W/C ANGEL 7113E LUCAS MISS G877

	CE	BW	WW	YW	ADG	MCE	MILK	MWW
EPD	11.0	-0.2	71.8	107.9	0.23	6.5	25.9	61.7
Rank	60	25	75	70	65	40	30	55
	STAY	DOC	CW	YG	MARB	REA	\$API	\$TI
EPD	12.9	13.1	17.6	-0.32	0.12	0.65	124.9	77.2
Rank	80	35	85	80	65	95	65	65

**LOT 61** **LUCAS LANCASTER L332**  
 Homo Black || Polled PB SM  
 2/21/2023 L332 ASA# 4204188

<b>BW</b>	<b>WW RATIO</b>	<b>GGP</b>	<b>G+</b>
80	118		

CCR COWBOY CUT 5048Z 631W  
**LUCAS MR. 258E** LUCAS MISS A680  
 LUCAS MISS 463B DX MISS JULIA-ANNE R180

	CE	BW	WW	YW	ADG	MCE	MILK	MWW
EPD	13.6	-1.7	76.4	115.3	0.24	5.7	24.9	63.0
Rank	25	10	60	55	55	55	35	45
	STAY	DOC	CW	YG	MARB	REA	\$API	\$TI
EPD	23.9	14.2	26.9	-0.29	0.41	0.76	170.2	89.0
Rank	1	25	55	90	15	75	10	25

**LOT 57** **LUCAS LUMENATE L270**  
 Homo Black || Polled PB SM  
 2/10/2023 L270 ASA# 4204123

<b>BW</b>	<b>WW RATIO</b>	<b>GGP</b>	<b>ATM</b>
94	96		

W/C BANKROLL 811D WS ALL-AROUND Z35  
**W/C BANK ON IT 273H** LUCAS MISS G35  
 KS MISS SEQUOIA Y770 LUCAS MISS E615

	CE	BW	WW	YW	ADG	MCE	MILK	MWW
EPD	11.3	2.9	85.4	119.6	0.21	8.0	23.6	66.2
Rank	55	85	25	45	80	20	50	35
	STAY	DOC	CW	YG	MARB	REA	\$API	\$TI
EPD	13.0	13.4	39.1	-0.39	0.21	0.99	128.5	83.2
Rank	80	30	20	55	45	25	60	40

**LOT 58** **LUCAS LIAISON L27**  
 Homo Black || Polled PB SM  
 1/19/2023 L27 ASA# 4203988

<b>BW</b>	<b>WW RATIO</b>	<b>GGP</b>
76	105	

W/C EXECUTIVE ORDER 8543B HPF OPTIMIZER A512  
**W/C DOUBLE DOWN 5014E** LUCAS MISS J707  
 W/C MISS WERNING 5014C LUCAS MISS Z615

	CE	BW	WW	YW	ADG	MCE	MILK	MWW
EPD	12.5	1.1	81.8	116.1	0.21	5.4	24.2	65.0
Rank	35	50	35	50	80	60	45	40
	STAY	DOC	CW	YG	MARB	REA	\$API	\$TI
EPD	18.2	16.3	31.5	-0.47	-0.06	1.01	128.6	77.5
Rank	20	10	35	20	95	25	60	65

**LOT 60** **LUCAS LUTHER L388**  
 Hetero Black || Polled PB SM  
 2/28/2023 L388 ASA# 4204245

<b>BW</b>	<b>WW RATIO</b>	<b>GGP</b>	<b>ATM</b>
90	100		

CCR COWBOY CUT 5048Z GIBBS 0601X RAISINCAIN  
**LUCAS MR. 258E** LUCAS MISS C41  
 LUCAS MISS 463B LUCAS MISS A18

	CE	BW	WW	YW	ADG	MCE	MILK	MWW
EPD	11.6	0.0	80.1	127.1	0.29	5.9	24.9	64.9
Rank	50	30	40	30	25	50	35	40
	STAY	DOC	CW	YG	MARB	REA	\$API	\$TI
EPD	13.9	12.6	25.2	-0.53	0.09	1.03	131.2	82.6
Rank	70	40	60	4	70	20	55	45

**LOT 62** **LUCAS LIGHTNING L319**  
 Hetero Black || Polled PB SM  
 2/18/2023 L319 ASA# 4204175

<b>BW</b>	<b>WW RATIO</b>	<b>GGP</b>	<b>G+</b>
85	122		

JC ENGINEER 102C LUCAS MR. A643  
**LUCAS MR. 432F** LUCAS MISS D277  
 LUCAS MISS 78Y LUCAS MISS A818

	CE	BW	WW	YW	ADG	MCE	MILK	MWW
EPD	14.5	-0.8	86.1	129.6	0.27	7.6	33.7	76.7
Rank	15	15	25	25	35	25	2	4
	STAY	DOC	CW	YG	MARB	REA	\$API	\$TI
EPD	18.5	12.7	36.1	-0.31	-0.05	0.73	137.9	83.5
Rank	20	40	25	85	95	80	40	40

# HIGH-PERFORMANCE BULLS

## LOT 63 LUCAS LAREDO L465

Homo Black || Polled PB SM  
3/10/2023 L465 ASA# 4204321

BW	WW RATIO	ØGGP	G+
79	111		

JC ENGINEER 102C LUCAS MR 214X  
LUCAS MR. 432F LUCAS MISS C653  
LUCAS MISS 78Y LUCAS LADY X203

	CE	BW	WW	YW	ADG	MCE	MILK	MWW
EPD	15.2	1.0	86.5	124.8	0.24	9.0	22.8	66.0
Rank	10	45	20	35	55	10	55	35
	STAY	DOC	CW	YG	MARB	REA	\$API	\$TI
EPD	17.4	11.4	23.3	-0.34	-0.03	0.73	133.8	80.9
Rank	30	55	70	75	95	80	50	50

## LOT 64 LUCAS LENO L406

Homo Black || Polled PB SM  
3/2/2023 L406 ASA# 4204263

BW	WW RATIO	ØGGP	G+
73	104		

JC ENGINEER 102C LCHMN BRIGHT LIGHT L122L  
LUCAS MR. 432F LUCAS MISS 30C  
LUCAS MISS 78Y LUCAS MISS 158A

	CE	BW	WW	YW	ADG	MCE	MILK	MWW
EPD	16.2	-2.4	73.0	103.2	0.19	9.1	35.5	71.9
Rank	10	4	70	80	90	10	1	15
	STAY	DOC	CW	YG	MARB	REA	\$API	\$TI
EPD	22.0	10.2	30.0	-0.28	0.13	0.75	153.4	81.8
Rank	2	70	45	90	60	80	20	45

## LOT 65 LUCAS LEXUS L282

Homo Black || Polled PB SM  
2/13/2023 L282 ASA# 4204136

BW	WW RATIO	ØGGP	ATM
89	95		

HPF OPTIMIZER A512 ELLINGSON DOMINATOR W905  
LUCAS MR. 43F LUCAS MISS E12  
LUCAS MISS 37D LUCAS MISS C812

	CE	BW	WW	YW	ADG	MCE	MILK	MWW
EPD	10.6	3.7	87.4	139.6	0.33	4.8	21.5	65.1
Rank	65	95	20	15	10	70	65	35
	STAY	DOC	CW	YG	MARB	REA	\$API	\$TI
EPD	14.4	11.9	31.3	-0.28	0.15	0.67	129.3	82.4
Rank	65	50	40	90	55	90	60	45



## LOT 66 LUCAS LOCAL L85

Homo Black || Polled PB SM  
3/18/2023 L85 ASA# 4204046

BW	WW RATIO	ØGGP	G+	ATM
87	117			

LUCAS MR. E42 TRIPLE C SINGLETARY S3H  
LUCAS MR. 64G LUCAS MISS J714  
LUCAS MISS 404E LUCAS MISS B248

	CE	BW	WW	YW	ADG	MCE	MILK	MWW
EPD	6.8	1.7	91.2	143.0	0.32	5.3	33.2	78.7
Rank	95	60	15	10	10	65	2	2
	STAY	DOC	CW	YG	MARB	REA	\$API	\$TI
EPD	19.3	13.1	41.1	-0.28	0.28	0.77	146.2	90.7
Rank	15	35	15	90	30	75	30	20



LUCAS LOCAL L85 Sells as Lot 66.

## LOT 67 LUCAS LANDON L490

Homo Black || Polled PB SM  
3/18/2023 L490 ASA# 4204346

BW	WW RATIO	ØGGP	ATM
88	106		

LUCAS MR. C799 LUCAS MR. 181Z  
LUCAS MR. 712F LUCAS MISS D436  
LUCAS MISS 329A U96

	CE	BW	WW	YW	ADG	MCE	MILK	MWW
EPD	8.5	4.3	81.5	133.9	0.33	5.8	34.4	75.0
Rank	85	99	35	20	10	55	1	10
	STAY	DOC	CW	YG	MARB	REA	\$API	\$TI
EPD	15.4	9.1	43.9	-0.24	-0.07	0.54	113.2	73.5
Rank	55	80	10	95	95	99	90	80

## LOT 68 LUCAS LEPRECHAUN L497

Hetero Black || Polled PB SM  
3/17/2023 L497 ASA# 4204353

BW	WW RATIO	ØGGP	ATM
78	98		

LUCAS MR. 349A LUCAS MR. B174  
LUCAS MR. E752 LUCAS MISS G669  
LUCAS MISS 179A LUCAS MISS A608

	CE	BW	WW	YW	ADG	MCE	MILK	MWW
EPD	12.0	1.0	85.7	131.3	0.28	6.1	31.4	74.2
Rank	45	45	25	25	30	50	4	10
	STAY	DOC	CW	YG	MARB	REA	\$API	\$TI
EPD	16.2	10.2	35.4	-0.37	0.11	0.83	136.1	84.9
Rank	45	70	25	60	65	60	45	35

# HIGH-PERFORMANCE BULLS

**LOT 69** **LUCAS LEFTHOOK L317**  
 Homo Black || Polled PB SM  
 2/18/2023 L317 ASA# 4204173

<b>BW</b>		<b>WW RATIO</b>		<b>⚡GGP</b>		<b>G+</b>		
87		126						
LUCAS MR. 349A				WS ALL-AROUND Z35				
LUCAS MR. E752				LUCAS MISS D217				
LUCAS MISS 179A				LUCAS MISS Z628				
EPD	CE	BW	WW	YW	ADG	MCE	MILK	MWW
Rank	14.6	-1.3	81.0	123.8	0.27	8.5	30.8	71.2
	15	15	40	35	35	15	10	15
EPD	STAY	DOC	CW	YG	MARB	REA	\$API	\$TI
Rank	23.9	9.8	24.0	-0.35	0.32	0.65	168.8	90.4
	1	75	65	70	25	95	10	20



**LOT 72** **LUCAS LIVINGSTON L296**  
 Homo Black || Polled PB SM  
 2/15/2023 L296 ASA# 4204151

<b>BW</b>		<b>WW RATIO</b>		<b>⚡GGP</b>				
72		99						
LUCAS MR. A695				LUCAS MR. A643				
LUCAS MR. F252				LUCAS MISS E745				
LUCAS MISS C7				LUCAS MISS B6				
EPD	CE	BW	WW	YW	ADG	MCE	MILK	MWW
Rank	16.4	-2.7	55.4	88.9	0.21	8.3	31.4	59.3
	5	3	99	99	80	15	4	65
EPD	STAY	DOC	CW	YG	MARB	REA	\$API	\$TI
Rank	17.6	14.6	26.6	-0.32	0.00	0.66	133.4	68.8
	30	20	55	80	90	90	50	95

**LOT 74** **LUCAS LOGAN L354**  
 Homo Black || Polled PB SM  
 2/24/2023 L354 ASA# 4204210

<b>BW</b>		<b>WW RATIO</b>		<b>⚡GGP</b>		<b>G+</b>		<b>ATM</b>	
84		108							
LUCAS MR. 243C				LUCAS SINGLE OPTION					
LUCAS MR. G673				LUCAS MISS G634					
LUCAS MISS D374				LUCAS MISS D259					
EPD	CE	BW	WW	YW	ADG	MCE	MILK	MWW	
Rank	12.4	1.3	86.5	145.3	0.37	6.0	28.4	71.6	
	40	50	20	10	2	50	15	15	
EPD	STAY	DOC	CW	YG	MARB	REA	\$API	\$TI	
Rank	20.6	12.9	36.5	-0.22	0.16	0.51	149.8	86.2	
	5	35	25	99	55	99	25	30	

**LOT 70** **LUCAS LEWIS L376**  
 Homo Black || Polled PB SM  
 2/26/2023 L376 ASA# 4204233

<b>BW</b>		<b>WW RATIO</b>		<b>⚡GGP</b>		<b>G+</b>		
78		115						
LUCAS MR. 349A				WS ALL-AROUND Z35				
LUCAS MR. E752				LUCAS MISS D20				
LUCAS MISS 179A				LUCAS MISS B113				
EPD	CE	BW	WW	YW	ADG	MCE	MILK	MWW
Rank	18.3	-1.1	87.3	126.7	0.25	8.6	28.1	71.7
	2	15	20	30	50	15	15	15
EPD	STAY	DOC	CW	YG	MARB	REA	\$API	\$TI
Rank	19.3	12.5	18.3	-0.35	0.33	0.68	165.5	93.7
	15	40	85	70	25	90	10	15

**LOT 71** **LUCAS LEE L461**  
 Homo Black || Polled PB SM  
 3/9/2023 L461 ASA# 4204317

<b>BW</b>		<b>WW RATIO</b>		<b>⚡GGP</b>		<b>G+</b>		
90		108						
LUCAS MR. 349A				LUCAS MR. 214X				
LUCAS MR. E752				LUCAS MISS A860				
LUCAS MISS 179A				LUCAS LADY X236				
EPD	CE	BW	WW	YW	ADG	MCE	MILK	MWW
Rank	12.1	-1.1	72.6	125.7	0.33	6.3	30.1	66.5
	45	15	75	30	10	45	10	30
EPD	STAY	DOC	CW	YG	MARB	REA	\$API	\$TI
Rank	21.7	12.7	19.8	-0.40	0.10	0.76	148.5	80.3
	2	40	80	50	65	75	25	50

**LOT 73** **LUCAS LANGLEY L321**  
 Homo Black || Polled PB SM  
 2/19/2023 L321 ASA# 4204177

<b>BW</b>		<b>WW RATIO</b>		<b>⚡GGP</b>				
74		94						
LUCAS MR. A695				LUCAS MR. 16A				
LUCAS MR. F252				LUCAS MISS D309				
LUCAS MISS C7				LUCAS MISS A638				
EPD	CE	BW	WW	YW	ADG	MCE	MILK	MWW
Rank	16.3	-1.6	57.9	93.0	0.22	9.5	31.6	60.7
	10	10	99	95	70	10	4	55
EPD	STAY	DOC	CW	YG	MARB	REA	\$API	\$TI
Rank	17.3	13.7	22.9	-0.22	0.13	0.52	138.3	71.8
	30	25	70	99	60	99	40	85

**LOT 75** **LUCAS LEVI L504**  
 Hetero Black || Hetero Polled PB SM  
 3/21/2023 L504 ASA# 4204360

<b>BW</b>		<b>WW RATIO</b>		<b>⚡GGP</b>		<b>G+</b>		
82		118						
LUCAS MR. 243C				LUCAS MR. 373Z				
LUCAS MR. G673				LUCAS MISS F307				
LUCAS MISS D374				LUCAS MISS Z521				
EPD	CE	BW	WW	YW	ADG	MCE	MILK	MWW
Rank	15.6	0.2	80.9	124.0	0.27	7.3	34.8	75.1
	10	30	40	35	35	30	1	10
EPD	STAY	DOC	CW	YG	MARB	REA	\$API	\$TI
Rank	19.9	11.5	34.5	-0.27	0.28	0.55	156.7	87.6
	10	55	30	95	30	99	15	25





# LUCAS CATTLE COMPANY COMMERCIAL BRED HEIFERS

## 40 COMMERCIAL FALL CALVING BRED HEIFERS

Black hided, ranch raised females who were AI bred and then cleaned up with Lucas Cattle Company Bulls. Females will be sorted into groups of like kind and estimated calving dates. AI bred females will begin calving 9/9 and the natural service females will calf from 9/23 to 11/18. Look for more information on this great set of females closer to the sale.



GB Fireball



Gibbs 9114G Essential



KBHR Keynote K229



Basin True Grit

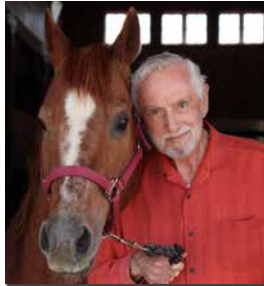




# LUCAS

PERFORMANCE HORSES

# A TRADITION OF EXCELLENCE.



Following in the tradition of Lucas Oil Products and Lucas Cattle Company, Forrest and Charlotte Lucas are proud to announce Lucas Performance Horses.

Forrest and Charlotte Lucas are not strangers to excellence. They brought the nation some of the finest oil products on the market. Over the last 25 years, the Lucas family and Lucas Cattle Company have also curated a large and successful herd of Simangus and Simmental Cattle. With these same goals in mind, Lucas Performance Horses is committed to breeding high quality performance horses for the cutting, reined cow horse, and ranch horse markets.





# THE BEST TOOLS IN MY SHOP



People are keeping their cars longer than ever. They want those older cars to run smooth and strong, despite their age. Lucas Oil Products are created to solve or prevent common mechanical problems in all vehicles, meaning older cars can run like new.

**Power and efficiency for the long road ahead.**

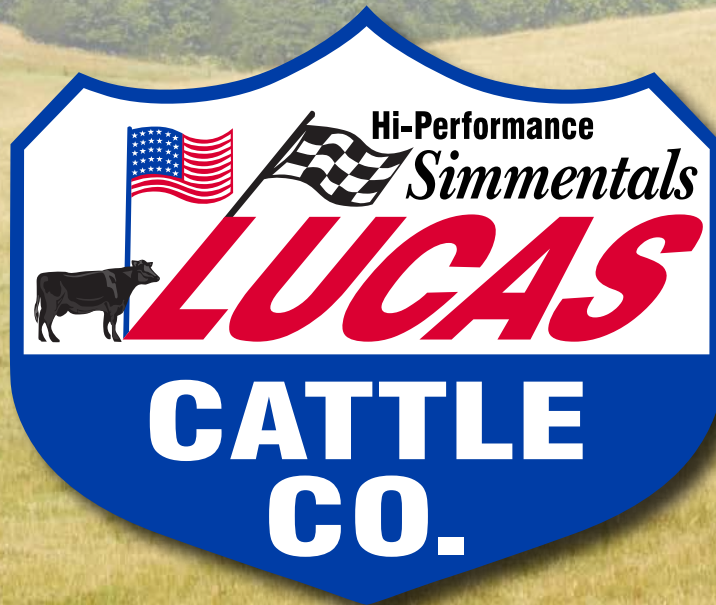
# LUCAS OIL

26511 County Road 50  
Cross Timbers, MO 65634

Presorted  
First Class  
US Postage  
**PAID**  
SlateGroup

# SPRING BULL SALE

## — April 13, 2024 —



CROSS TIMBERS, MO **LUCAS CATTLE COMPANY** 1:00 PM CT