

Consistency. Uniformity. Integrity. Dependability.



At the Ranch || Chamberlain, SD
1:00 PM CT

February 16, 2024

annual production sale

58 Simmental and SimAngus™ Bulls
Including lots from guest consignor Cable C Cross Ranch

At the Ranch || Chamberlain, SD
1:00 PM CT

February 16, 2024

annual production sale

58 Simmental and SimAngus™ Bulls

Including lots from guest consignor Cable C Cross Ranch

SALE DAY PHONES

Steve Reimer	605-680-1939
Elaine Reimer	605-680-1875
Harley Cable	605-680-0845
Marty Ropp	406-581-7835
Corey Wilkins	256-590-2487
Jared Murnin	406-321-1542

SALE REPRESENTATIVES

Russ Danielson	701-261-2742
Chris Effling, Special Assignment	605-796-0142
Jim Scheel, Special Assignment	605-545-1521

AUCTIONEER

Chisum Peterson	605-234-4214
	605-730-4214 (c)

DIRECTIONS TO SALE FACILITY

25657 345th Ave., Chamberlain, SD
From I-90: Take Exit 265 at Chamberlain, 8 miles South on 344th Ave, 1 mile East on 257th St, 1/2 mile North on 345th Ave

ANNOUNCEMENTS

Announcements made sale day take precedence over printed material. Anyone attending this sale does so at their own risk. R&R Cattle Company and sale representatives will not be held responsible for any personal injury while attending this sale. Please let sale clerks know transportation plans. Please note the EPDs may change from the time of the sale book is printed until registration papers are transferred.

ABOUT THE BULLS

ALL bulls have been tested BVD/PI free. Yearling weights, scrotal measurements, and Average Daily Gain information will be available online and on a sale-day supplement sheet. R & R Cattle Company and Cable's C Cross Ranch retain the right to 1/3 revenue sharing semen interest in bulls they sell in this sale.

GUARANTEE

All bulls are guaranteed through the first breeding season and are semen tested before delivery. If there are any problems, a replacement will be provided or credit on a future purchase.

LIVESTOCK MORTALITY INSURANCE

Martin-Trudeau Insurance, Mitchell, SD
605-996-3106 or 605-770-5170

DVAuction

Broadcasting Real-Time Auctions

WATCH AND BID ONLINE FOR FREE

Visit www.DVAuction.com and Register.

It's as easy as 1, 2, 3...

1. Create an account at www.DVAuction.com under the "create new account" tab.
2. Apply for bidding by clicking "apply for bidding" in the upper left corner of your screen, at least 24 hours prior to the auction.
3. Tune into the sale and make your purchases.

www.DVAuction.com

support@dvauction.com

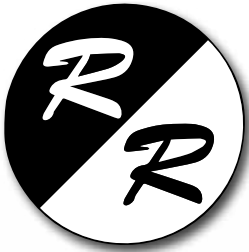
402-316-5460 || 402-474-5557

SALE MANAGEMENT

ALLIED
GENETIC RESOURCES

Marty Ropp 406-581-7835
Corey Wilkins 256-590-2487
Jared Murnin 406-321-1542
www.alliedgeneticresources.com

Over 50 years of producing High Caliber Cattle



R & R CATTLE COMPANY
Steve & Elaine Reimer
25657 345th Ave Chamberlain, SD
605-234-6111 || 605-680-1939
www.rrcattleco.com
Harley Cable 605-680-0845

Welcome...

Welcome cattlemen to R&R Cattle Co. 2024 Bull Sale. The sale will be held at the ranch south of Chamberlain with Harley and Dawn Cable, Cable C Cross Ranch, as guest consignors.

The 2023 calf crop offers bulls for every program, from the commercial man to the purebred producer. There are 3/8 Simm 5/8 AN cross to purebred Simmental herd sires. Sires include OMF Epic E27, Hook's Eagle 6E, R&R Testament, CLRS Homeland 327H, Hook's Falcon 19F, and Angus sired calves by Square B True North.

The bulls were bred and developed on each ranch separately. Individual performance information and ultrasound data will be available prior to the sale.

Some of the bulls have icons of ACE(accredited calving ease), ATM (accredited terminal mate) or G+ (accredited genomic plus), these are genomic designations. By combining specific genomic information with the long-proven value of EPDs, you get improved depth and precision when evaluating the actual ability to transmit value and profit.

We are again offering to develop the bulls at no charge until April 1st; at that time delivery arrangements will be made. The first 300 miles will be free delivery, we will help coordinate travel arrangements beyond that point.

Stop by the ranch to preview bulls and talk cattle. Join us for lunch, 11:00 am on sale day, February 16.

Steve & Elaine Reimer

From the sale manager...

Welcome to the 2024 R & R Cattle Company Annual production sale with guest consignors Cable C Cross Ranch. As the moto on the cover of this catalog states, these cattle are consistent and uniform from the first lot in this catalog to the last. They are backed by integrity and dependability from these breeding programs that have been raising top quality seedstock for decades. When you purchase a bull in this sale you can rest assured that he was mated and developed with you, the commercial cattleman, in mind. These bulls represent their focus on producing functional cattle that last and work in the real world with the goal of producing top quality feeder calves as well as making replacement females that are sound, fertile, and raise a big calf year after year. The Reimers and Cables are cattlemen and make a living from their cattle operations like many of you do as well. They select and breed cattle that work and do not select for extremes and are backed by generations of cow families that get it done year after year.

We are experiencing some great times in the cattle business with record high prices. With the slow cow herd expansion, we can expect to see these levels of prices for at least another year or more. We have also experienced high input costs so the current prices being paid for cattle is very much needed. It is more important now than ever to make sound genetic selections to capitalize on these good times and to put you in a strong position when the market trends back down. Selecting seedstock that will add pounds pays but also selecting for replacement females that are low input with longevity will pay dividends in the long run. This set of bulls will cover these bases for you for years to come.

As always if you have questions or if we can be of any assistance, please contact us.

Marty Ropp, Corey Wilkins and Jared Murnin

Consistency. Uniformity. Integrity. Dependability.

True North Sons



R&R TRUE NORTH L30 Sells as Lot 1.



R&R TRUE NORTH L39 Sells as Lot 2.



R&R TRUE NORTH L32 Sells as Lot 3.

LOT 4 R&R TRUE NORTH L306 **GGP**

Homo Black || Homo Polled 1/2 SM 1/2 AN
 3/9/2023 Bull ASA# 4260537
 BW: 85 Adj. WW: 664

S A V RAINFALL 6846 KBHR HIGH ROAD E283

SQUARE B TRUE NORTH 8052 **R&R HIGHNESS J174**
 ELBANNA OF CONANGA 1209 R&R TYRA D646

	CE	BW	WW	YW	MCE	MILK	MWW	STAY
EPD	13.3	-1.5	80.5	130.2	6.9	30.6	70.2	15.8
Rank	45	25	35	25	50	10	15	40
	CW	YG	MARB	BF	REA	API	TI	
EPD	34.6	-0.10	0.69	0.009	0.70	159.6	94.1	
Rank	45	85	15	95	50	15	10	

L306 combines the outstanding sires True North and High Road in a very complete package.

LOT 1 R&R TRUE NORTH L30 **GGP**

Hetero Black || Homo Polled 1/2 SM 1/2 AN
 2/21/2023 Bull ASA# 4260487
 BW: 65 Adj. WW: 714

S A V RAINFALL 6846 HOOK'S EAGLE 6E

SQUARE B TRUE NORTH 8052 **R&R TRICIA GIRL J169**
 ELBANNA OF CONANGA 1209 R&R CYNDER E778

	CE	BW	WW	YW	MCE	MILK	MWW	STAY
EPD	19.5	-4.6	78.9	120.2	10.0	29.5	68.3	16.0
Rank	3	3	40	45	10	15	25	35
	CW	YG	MARB	BF	REA	API	TI	
EPD	29.9	-0.03	0.57	0.031	0.60	164.5	93.5	
Rank	60	95	25	99	65	10	15	

Square B True North worked very well making SimAngus cattle. This bull is no exception. He started at 65 lbs. and weaned at over 700 lbs. He is a real standout with Herd Bull Potential; out of one of our top cow families; in the top 10% for breed API.

LOT 2 R&R TRUE NORTH L39 **GGP**

Homo Black || Homo Polled 1/2 SM 1/2 AN
 3/1/2023 Bull ASA# 4260491
 BW: 70 Adj. WW: 702

S A V RAINFALL 6846 HOOK'S FALCON 19F

SQUARE B TRUE NORTH 8052 **R&R MISS FALCON J134**
 ELBANNA OF CONANGA 1209 R&R MISS UPGRADE B459

	CE	BW	WW	YW	MCE	MILK	MWW	STAY
EPD	19.6	-0.3	88.0	141.8	10.4	29.7	73.0	15.5
Rank	3	45	15	10	10	15	10	45
	CW	YG	MARB	BF	REA	API	TI	
EPD	34.1	-0.05	0.62	0.003	0.50	164.3	95.9	
Rank	50	95	20	95	85	10	10	

Another True North that is calving ease and weaned at over 700 lbs. Not to mention he ranks in the top 10% of the breed for API.

LOT 3 R&R TRUE NORTH L32 **GGP**

Homo Black || Homo Polled 1/2 SM 1/2 AN
 2/25/2023 Bull ASA# 4260456
 BW: 75 Adj. WW: 717

S A V RAINFALL 6846 HOOK'S FALCON 19F

SQUARE B TRUE NORTH 8052 **R&R MISS FALCON J1103**
 ELBANNA OF CONANGA 1209 R&R MISS CARVER F882

	CE	BW	WW	YW	MCE	MILK	MWW	STAY
EPD	15.8	0.4	84.5	134.7	8.4	30.8	72.3	13.4
Rank	20	60	25	20	30	10	10	65
	CW	YG	MARB	BF	REA	API	TI	
EPD	33.1	-0.15	0.57	-0.005	0.73	149.6	91.6	
Rank	50	75	25	90	45	25	15	

Lot 3 might be the most powerful one in this sire group. He boasts the highest adj. WW of the sire group. You be the judge.

LOT 5 R&R TRUE NORTH L31 **GGP**

Homo Black || Homo Polled 1/2 SM 1/2 AN
 2/22/2023 Bull ASA# 4260452
 BW: 75 Adj. WW: 657

S A V RAINFALL 6846 HOOK'S FALCON 19F

SQUARE B TRUE NORTH 8052 **R&R MISS FALCON J1146**
 ELBANNA OF CONANGA 1209 R&R MISS HAMMER D613

	CE	BW	WW	YW	MCE	MILK	MWW	STAY
EPD	15.8	-0.5	84.4	134.7	8.1	27.2	68.8	15.6
Rank	20	40	25	20	30	25	20	40
	CW	YG	MARB	BF	REA	API	TI	
EPD	47.6	-0.06	0.50	0.001	0.68	151.3	90.2	
Rank	15	90	30	95	50	25	20	

Excellent calving ease potential with strong growth predictability.

True North - Eagle Sons

LOT
6

R&R TRUE NORTH L35 ♂GGP

Homo Black || Homo Polled 3/8 SM 5/8 AN
2/27/2023 Bull ASA# 4260453
BW: 72 Adj. WW: 646



S A V RAINFALL 6846

HOOK'S FALCON 19F

SQUARE B TRUE NORTH 8052
ELBANNA OF CONANGA 1209

R&R MISS FALCON J199
R&R MISS TOP GRADE C548

	CE	BW	WW	YW	MCE	MILK	MWW	STAY
EPD	13.5	-0.2	87.0	144.0	7.5	30.5	73.4	12.6
Rank	40	45	15	10	40	10	10	75
	CW	YG	MARB	BF	REA	API	TI	
EPD	45.4	-0.18	0.44	-0.029	0.80	137.5	89.5	
Rank	20	65	40	70	30	45	20	

Balanced calving ease with strong growth potential for weaning and yearling numerical values.



SQUARE B TRUE NORTH 8052 Sire of Lots 1-6.

LOT
7

R&R FINAL PRODUCT L36 ♂GGP

Homo Black || Homo Polled 3/8 SM 5/8 AN
2/28/2023 Bull ASA# 4260451
BW: 65 Adj. WW: 681

CONNELLY PRODUCT 568

HOOK'S EAGLE 6E

CONNELLY FINAL PRODUCT
EBONISTA OF CONANGA 471

R&R MISS EAGLE J1162
R&R MISS DIPLOMAT G937

	CE	BW	WW	YW	MCE	MILK	MWW	STAY
EPD	15.3	-2.3	83.5	137.4	9.1	30.3	71.0	15.6
Rank	20	15	25	15	20	10	15	40
	CW	YG	MARB	BF	REA	API	TI	
EPD	46.7	0.03	0.45	0.020	0.56	147.1	89.2	
Rank	15	99	40	99	75	30	25	

This Final Product son is one of the real standouts of the offering, combining performance and calving ease with proven genetics.



R&R FINAL PRODUCT L36 Sells as Lot 7.

LOT
8

R&R EAGLE L353 ♂GGP

Homo Black || Homo Polled 5/8 SM 11/32 AN 1/32 MX
3/25/2023 Bull ASA# 4260517
BW: 85 Adj. WW: 733

HOOK'S BLACK HAWK 50B

WCS MR RAZOR 1044Y

HOOK'S EAGLE 6E

R&R MISS RAZOR D658

HOOK'S CRYSTAL 1C

R&R MISS ANSWER T702



	CE	BW	WW	YW	MCE	MILK	MWW	STAY
EPD	15.8	-0.7	87.7	133.1	7.4	22.6	66.5	17.8
Rank	20	35	15	20	45	65	30	20
	CW	YG	MARB	BF	REA	API	TI	
EPD	45.7	-0.28	0.28	-0.030	1.10	145.3	87.1	
Rank	20	35	65	70	4	35	30	

Eagle sons have topped sales all over the country. This son is one of the phenotype standouts of the offering. Not to mention he weaned at over 700 lbs.



R&R EAGLE L353 Sells as Lot 8.

LOT
9

R&R EAGLE L342 ♂GGP

Homo Black || Homo Polled 5/8 SM 3/8 AN
3/23/2023 Bull ASA# 4260545
BW: 70 Adj. WW: 658



HOOK'S BLACK HAWK 50B

TJ DIPLOMAT 294D

HOOK'S EAGLE 6E

R&R MISS DIPLOMAT G925

HOOK'S CRYSTAL 1C

R&R MISS LONGEVITY A341

	CE	BW	WW	YW	MCE	MILK	MWW	STAY
EPD	16.2	-5.0	73.3	109.1	8.2	25.5	62.0	18.5
Rank	15	2	60	70	30	40	50	15
	CW	YG	MARB	BF	REA	API	TI	
EPD	21.0	-0.17	0.68	-0.008	0.62	170.0	93.1	
Rank	85	70	15	90	65	10	15	

Proven genetics and is the highest API SimAngus bull in the offering.

LOT
10

R&R EAGLE L344 ♂GGP

Homo Black || Homo Polled 5/8 SM 3/8 AN
3/23/2023 Bull ASA# 4260494
BW: 80 Adj. WW: 714



HOOK'S BLACK HAWK 50B

R&R SUDDEN IMPACT F813

HOOK'S EAGLE 6E

R&R MISS SUDDEN IMPACT H073

HOOK'S CRYSTAL 1C

R&R MISS UNITED C522



	CE	BW	WW	YW	MCE	MILK	MWW	STAY
EPD	13.4	-0.1	91.5	145.1	6.7	27.0	72.7	12.7
Rank	40	50	10	10	55	25	10	75
	CW	YG	MARB	BF	REA	API	TI	
EPD	45.1	-0.33	0.57	-0.056	1.06	149.9	96.7	
Rank	20	20	25	30	5	25	10	

Strong weaning and yearling growth numbers in a homo black and polled genetic package.

Eagle - Testament Sons



R&R EAGLE L304 Sells as Lot 11.



HOOK'S EAGLE 6E Sire of Lots 8-14.

LOT 13 R&R EAGLE 309 **GGP**
 Homo Black || Homo Polled PB SM
 3/14/2023 Bull ASA# 4260481
 BW: 82 Adj. WW: 762

HOOK'S BLACK HAWK 50B HOOK'S FALCON 19F
HOOK'S EAGLE 6E **R&R MISS FALCON J1130**
 HOOK'S CRYSTAL 1C R&R MISS THOR B479

	CE	BW	WW	YW	MCE	MILK	MWW	STAY
EPD	13.9	-1.8	91.9	143.3	6.5	25.8	71.6	17.1
Rank	20	10	10	10	40	30	15	35
	CW	YG	MARB	BF	REA	API	TI	
EPD	46.3	-0.30	0.29	-0.040	1.12	158.0	96.1	
Rank	10	85	30	99	10	15	10	

The highest weaning Eagle son who is a true powerhouse; homo black and homo polled.



R&R TESTAMENT L321 Sells as Lot 15.

LOT 11 R&R EAGLE L304 **GGP**
 Homo Black || Homo Polled PB SM
 3/5/2023 Bull ASA# 4260441
 BW: 70 Adj. WW: 720

HOOK'S BLACK HAWK 50B KBHR HIGH ROAD E283
HOOK'S EAGLE 6E **R&R MISS HIGH ROAD J154**
 HOOK'S CRYSTAL 1C R&R MISS RAZOR D652

	CE	BW	WW	YW	MCE	MILK	MWW	STAY
EPD	15.9	-3.3	87.4	130.9	7.0	25.2	68.8	18.7
Rank	10	2	20	25	35	35	25	15
	CW	YG	MARB	BF	REA	API	TI	
EPD	26.4	-0.40	0.41	-0.039	1.16	170.6	98.4	
Rank	55	50	15	99	10	5	5	

LOT 12 R&R EAGLE L307 **GGP**
 Homo Black || Homo Polled PB SM
 3/11/2023 Bull ASA# 4260435
 BW: 80 Adj. WW: 692

HOOK'S BLACK HAWK 50B LBR5 GENESIS G69
HOOK'S EAGLE 6E **R&R FIRST GIRL J198**
 HOOK'S CRYSTAL 1C R&R MISS UPGRADE A325

	CE	BW	WW	YW	MCE	MILK	MWW	STAY
EPD	10.6	0.2	93.6	145.8	4.3	21.5	68.3	16.2
Rank	65	30	10	10	80	65	25	45
	CW	YG	MARB	BF	REA	API	TI	
EPD	40.0	-0.30	0.54	-0.035	1.05	162.4	99.9	
Rank	15	85	10	99	20	10	4	

Homo black and polled with top 10% numerical values for weaning weight and yearling weight.

LOT 14 R&R EAGLE L369 **GGP**
 Homo Black || Homo Polled PB SM
 3/31/2023 Bull ASA# 4260469
 BW: 88 Adj. WW: 640

HOOK'S BLACK HAWK 50B WELSHS DEW IT RIGHT067T
HOOK'S EAGLE 6E **R&R MISS DIR B405**
 HOOK'S CRYSTAL 1C R&R TYRA Z257

	CE	BW	WW	YW	MCE	MILK	MWW	STAY
EPD	11.0	1.5	90.9	142.0	4.5	21.5	66.9	22.0
Rank	60	55	15	10	75	65	30	2
	CW	YG	MARB	BF	REA	API	TI	
EPD	36.3	-0.30	0.26	-0.043	0.94	156.2	90.0	
Rank	25	85	35	95	35	20	20	

Strong weaning and yearling performance numbers.

LOT 15 R&R TESTAMENT L320 **GGP**
 Homo Black || Homo Polled PB SM
 3/22/2023 Bull ASA# 4260506
 BW: 85 Adj. WW: 694

WS PROCLAMATION E202 TKCC CARVER 65C
R&R TESTAMENT J155 **R&R MISS CARVER G975**
 R&R MISS TOP GRADE C534 R&R MISS CHAMBER Z231

	CE	BW	WW	YW	MCE	MILK	MWW	STAY
EPD	11.9	0.4	77.0	112.9	6.1	27.1	65.6	18.5
Rank	45	35	55	60	50	20	35	20
	CW	YG	MARB	BF	REA	API	TI	
EPD	30.0	-0.27	0.52	-0.054	0.70	159.2	89.3	
Rank	45	95	10	85	85	15	20	

The Testament sons are very complete and correct. This Purebred son is one of the real standouts of the offering.

LOT 16 **R&R TESTAMENT L348** **♂GGP**
 Hetero Black || Homo Polled PB SM
 3/23/2023 Bull ASA# 4260434
 BW: 85 Adj. WW: 597

WS PROCLAMATION E202 TKCC CARVER 65C
R&R TESTAMENT J155 **R&R CYNDER E778**
 R&R MISS TOP GRADE C534 CABLE GRANDMASTER 312A

	CE	BW	WW	YW	MCE	MILK	MWW	STAY
EPD	14.8	-1.0	64.5	87.2	8.0	25.6	57.8	22.1
Rank	15	15	95	99	20	30	70	2
	CW	YG	MARB	BF	REA	API	TI	
EPD	17.0	-0.24	0.31	-0.023	0.69	154.4	77.8	
Rank	90	95	30	99	90	20	60	

L348 is a nicely balanced homo polled Testament out of a strong cow family.



R&R TESTAMENT J155 Sire of Lots 15-20.

LOT 17 **R&R TESTAMENT L352** **♂GGP**
 Homo Black || Homo Polled 3/4 SM 1/4 AN
 3/25/2023 Bull ASA# 4260508
 BW: 90 Adj. WW: 721

WS PROCLAMATION E202 MUSGRAVE 316 STUNNER
R&R TESTAMENT J155 **R&R MISS STUNNER G945**
 R&R MISS TOP GRADE C534 R&R MISS WIDE TRACK A344

	CE	BW	WW	YW	MCE	MILK	MWW	STAY
EPD	15.2	-0.3	75.3	114.6	5.9	27.4	65.0	22.0
Rank	25	45	55	55	70	25	35	1
	CW	YG	MARB	BF	REA	API	TI	
EPD	45.9	-0.02	0.51	-0.012	0.44	158.5	84.1	
Rank	20	95	30	85	90	15	40	

The second heaviest weaning Testament son in the offering. Be sure to look him up sale day. He is one of the really good bulls in the offering.



R&R TESTAMENT L352 Sells as Lot 17.

LOT 18 **R&R TESTAMENT L349** **♂GGP**
 Homo Black || Homo Polled 3/4 SM 5/32 AN 3/32 MX
 3/24/2023 Bull ASA# 4260468
 BW: 80 Adj. WW: 678

WS PROCLAMATION E202 FHEN HALFTIME A127
R&R TESTAMENT J155 **R&R MISS HALFTIME D668**
 R&R MISS TOP GRADE C534 R&R MISS CHAMBER Z224

	CE	BW	WW	YW	MCE	MILK	MWW	STAY
EPD	13.1	0.6	82.7	132.7	7.5	27.7	69.0	20.7
Rank	45	60	25	25	40	20	20	3
	CW	YG	MARB	BF	REA	API	TI	
EPD	49.4	-0.16	0.46	-0.062	0.53	153.9	87.0	
Rank	15	70	35	20	80	20	30	

L349 is a homo black and polled powerhouse out of an excellent FHEN Halftime daughter.



R&R TESTAMENT L349 Sells as Lot 18.

LOT 19 **R&R TESTAMENT L326** **♂GGP**
 Homo Black || Homo Polled 3/4 SM 1/4 AN
 3/17/2023 Bull ASA# 4260445
 BW: 85 Adj. WW: 666

WS PROCLAMATION E202 TKCC CARVER 65C
R&R TESTAMENT J155 **R&R MISS CARVER F848**
 R&R MISS TOP GRADE C534 R&R MISS THUNDER A301

	CE	BW	WW	YW	MCE	MILK	MWW	STAY
EPD	13.7	-0.1	80.6	128.4	8.0	27.1	67.1	15.7
Rank	40	50	35	30	35	25	30	40
	CW	YG	MARB	BF	REA	API	TI	
EPD	39.0	-0.20	0.48	-0.039	0.70	146.2	87.3	
Rank	35	60	35	55	50	30	30	

Homo black and homo polled Testament with solid performance numbers, out of a strong cow family.



Testament - Falcon Sons



R&R TESTAMENT L358 Sells as Lot 20.



R&R FALCON L317 Sells as Lot 21.

LOT 22 **R&R FALCON L318** **♀GGP**
 Homo Black || Homo Polled PB SM
 3/15/2023 Bull ASA# 4260525
 BW: 87 Adj. WW: 659

HOOK'S BLACK HAWK 50B HS/HSF TITANIUM T30N
 HOOK'S FALCON 19F R&R TYRA Z257
 HOOK'S DANICA 38D R&R MISS 878 P411



	CE	BW	WW	YW	MCE	MILK	MWW	STAY
EPD	10.2	2.5	70.8	102.0	4.6	24.4	59.8	23.2
Rank	70	80	80	85	75	40	60	1
	CW	YG	MARB	BF	REA	API	TI	
EPD	26.0	-0.24	0.19	-0.043	0.65	141.3	74.0	
Rank	60	95	45	95	95	35	80	

L318 is homo black and homo polled. His dam, Z257 dam has left us several excellent daughters that have been retained in the herd.

LOT 24 **R&R FALCON L329** **♀GGP**
 Homo Black || Homo Polled PB SM
 3/18/2023 Bull ASA# 4260520
 BW: 85 Adj. WW: 619

HOOK'S BLACK HAWK 50B MR NLC UPGRADE U8676
 HOOK'S FALCON 19F R&R MISS UPGRADE C567
 HOOK'S DANICA 38D R&R TYRA Y133



	CE	BW	WW	YW	MCE	MILK	MWW	STAY
EPD	10.5	1.2	80.4	122.6	4.4	22.6	62.7	17.3
Rank	65	50	40	40	80	55	50	30
	CW	YG	MARB	BF	REA	API	TI	
EPD	27.1	-0.32	0.13	-0.060	0.77	135.0	80.7	
Rank	55	80	60	85	75	45	50	

L329 is accredited Genomic Plus; this indicates more balanced genetic predictability and he's a PB; homo black and homo polled.

LOT 20 **R&R TESTAMENT L358** **♀GGP**
 Homo Black || Hetero Polled 3/4 SM 1/4 AN
 3/27/2023 Bull ASA# 4260513
 BW: 85 Adj. WW: 731

WS PROCLAMATION E202 TJ DIPLOMAT 294D
 R&R TESTAMENT J155 R&R MISS DIPLOMAT G937
 R&R MISS TOP GRADE C534 CABLE GRANDMASTER 312A

	CE	BW	WW	YW	MCE	MILK	MWW	STAY
EPD	12.1	0.6	70.4	108.6	6.9	33.2	68.3	18.4
Rank	60	60	70	70	50	3	25	15
	CW	YG	MARB	BF	REA	API	TI	
EPD	42.9	-0.21	0.34	-0.038	0.79	135.9	77.0	
Rank	25	55	55	55	35	50	65	

One of the real power bulls in this sale. He has a great look and is loaded with performance.

LOT 21 **R&R FALCON L317** **♀GGP**
 Homo Black || Homo Polled PB SM
 3/13/2023 Bull ASA# 4260522
 BW: 85 Adj. WW: 824

HOOK'S BLACK HAWK 50B RC CLUB KING 040R
 HOOK'S FALCON 19F R&R QUEEN Z259
 HOOK'S DANICA 38D R&R DREAM GIRL S641



	CE	BW	WW	YW	MCE	MILK	MWW	STAY
EPD	10.8	0.2	87.2	129.2	4.4	24.4	67.9	20.6
Rank	60	30	20	25	80	40	25	5
	CW	YG	MARB	BF	REA	API	TI	
EPD	43.8	-0.33	0.12	-0.065	0.97	144.8	85.6	
Rank	10	80	65	70	30	30	30	

This Purebred bull was the heaviest at weaning. He is made right and should add pounds.

LOT 23 **R&R FALCON L356** **♀GGP**
 Homo Black || Homo Polled PB SM
 3/27/2023 Bull ASA# 4260449
 BW: 80 Adj. WW: 694

HOOK'S BLACK HAWK 50B OLF THOR X54
 HOOK'S FALCON 19F R&R MISS THOR B479
 HOOK'S DANICA 38D KAPPES UNITY T148 Z115

	CE	BW	WW	YW	MCE	MILK	MWW	STAY
EPD	11.6	-0.2	75.4	110.8	7.0	28.0	65.6	21.9
Rank	50	25	60	65	35	15	35	2
	CW	YG	MARB	BF	REA	API	TI	
EPD	32.8	-0.23	0.02	-0.055	0.58	138.2	76.4	
Rank	35	99	85	85	99	40	65	

A PB Falcon son who is homo black and homo polled.

LOT 25 **R&R FALCON 362** **♀GGP**
 Homo Black || Homo Polled 3/4 SM 1/4 AN
 3/29/2023 Bull ASA# 4260432
 BW: 91 Adj. WW: 692

HOOK'S BLACK HAWK 50B CCR COWBOY CUT 5048Z
 HOOK'S FALCON 19F R&R MISS F854
 HOOK'S DANICA 38D R&R MISS PRIDE U854

	CE	BW	WW	YW	MCE	MILK	MWW	STAY
EPD	9.0	3.2	86.0	132.8	4.6	23.2	66.1	19.2
Rank	90	95	20	25	85	60	30	10
	CW	YG	MARB	BF	REA	API	TI	
EPD	40.1	-0.14	0.20	-0.036	0.54	127.2	78.0	
Rank	30	75	80	55	75	65	65	

The dam of L362 is sired by Cowboy Cut, the great female producer. She has been a very consistent producer of top-end progeny. He's homo black and homo polled.

LOT **26** **R&R EPIC L363** ♂GGP
 Homo Black || Homo Polled PB SM
 3/29/2023 Bull ASA# 4260427
 BW: 65 Adj. WW: 651

WS ALL-AROUND Z35 CCR COWBOY CUT 5048Z
OMF EPIC E27 **R&R DREAMS E796 ET**
 OMF TIME LESS B100 R&R SWEET DREAMS T701



	CE	BW	WW	YW	MCE	MILK	MWW	STAY
EPD	16.9	-0.3	90.5	138.8	11.8	23.4	68.6	21.7
Rank	4	25	15	15	1	50	25	2
	CW	YG	MARB	BF	REA	API	TI	
EPD	35.9	-0.31	0.33	-0.066	0.79	169.4	94.4	
Rank	25	85	25	70	70	10	10	

OMF Epic has been on of the leading phenotype Purebred sires in the industry. This calving ease bull has a great look and ranks in the top 10% for \$API.

LOT **28** **R&R EPIC L357** ♂GGP
 Homo Black || Hetero Polled PB SM
 3/27/2023 Bull ASA# 4260482
 BW: 80 Adj. WW: 627

WS ALL-AROUND Z35 TKCC CARVER 65C
OMF EPIC E27 **R&R MISS CARVER F892**
 OMF TIME LESS B100 CABLE GRANDMASTER 312A



	CE	BW	WW	YW	MCE	MILK	MWW	STAY
EPD	14.1	-3.1	77.3	104.7	7.9	21.0	59.6	16.6
Rank	20	3	55	80	20	70	60	40
	CW	YG	MARB	BF	REA	API	TI	
EPD	17.6	-0.25	0.16	-0.031	0.66	142.7	83.6	
Rank	85	95	55	99	90	35	40	

Rock solid genetic package from a strong cow family; calving ease prospect.

LOT **30** **R&R SHERIFF L315** ♂GGP
 Homo Black || Homo Polled 3/4 SM 1/4 AN
 3/12/2023 Bull ASA# 4260467
 BW: 95 Adj. WW: 750

RUBYS TURNPIKE 771E B M DASH 2328
KRJ DAKOTA OUTLAW G974 **R&R MISS DASH D606**
 BRKC DAPHNE DY37 R&R MISS DIR B407



	CE	BW	WW	YW	MCE	MILK	MWW	STAY
EPD	8.3	2.9	90.2	137.7	4.0	22.6	67.7	11.5
Rank	95	95	10	15	90	65	25	80
	CW	YG	MARB	BF	REA	API	TI	
EPD	11.9	-0.56	0.08	-0.108	0.95	108.6	79.7	
Rank	99	1	95	1	15	90	55	

Take look at this big middle, easy fleshing bull. He weaned at 750 lbs. and should add volume and pounds to his progeny.

LOT **31** **R&R OUTLAW L311** ♂GGP
 Homo Black || Homo Polled PB SM
 3/16/2023 Bull ASA# 4260423
 BW: 95 Adj. WW: 732

RUBYS TURNPIKE 771E HOOK'S FALCON 19F
KRJ DAKOTA OUTLAW G974 **R&R MISS FALCON J144**
 BRKC DAPHNE DY37 R&R MISS CONFIDENCE F818



	CE	BW	WW	YW	MCE	MILK	MWW	STAY
EPD	9.3	3.0	100.9	149.8	3.8	24.4	74.8	14.9
Rank	80	85	2	4	85	40	10	60
	CW	YG	MARB	BF	REA	API	TI	
EPD	41.4	-0.47	0.20	-0.096	1.14	137.4	93.1	
Rank	15	20	45	15	10	45	15	

Homo black and homo polled; top end weaning and yearling numerical values.

LOT **27** **R&R EPIC L377** ♂GGP *Epic - Outlaw Sons*
 Homo Black || Homo Polled PB SM
 4/3/2023 Bull ASA# 4260526
 BW: 85 Adj. WW: 677

WS ALL-AROUND Z35 CCR COWBOY CUT 5048Z
OMF EPIC E27 **R&R MISS CC D642**
 OMF TIME LESS B100 R&R MISS UPGRADE A321



	CE	BW	WW	YW	MCE	MILK	MWW	STAY
EPD	12.2	-0.6	84.7	122.5	8.1	27.5	69.8	17.2
Rank	40	20	25	40	20	20	20	35
	CW	YG	MARB	BF	REA	API	TI	
EPD	20.5	-0.30	0.30	-0.048	0.71	149.6	89.8	
Rank	80	85	30	95	85	25	20	

Homo black and homo polled out of the very productive 642 cow. Great potential in this genetic package.

LOT **29** **R&R EPIC L373** ♂GGP
 Homo Black || Homo Polled 3/4 SM 1/4 AN
 4/1/2023 Bull ASA# 4260421
 BW: 88 Adj. WW: 676

WS ALL-AROUND Z35 CCR COWBOY CUT 5048Z
OMF EPIC E27 **R&R MISS CC F864**
 OMF TIME LESS B100 R&R MISS PRODUCT Z256



	CE	BW	WW	YW	MCE	MILK	MWW	STAY
EPD	10.4	-0.6	82.0	120.5	5.3	21.3	62.1	22.1
Rank	80	40	30	45	80	75	50	1
	CW	YG	MARB	BF	REA	API	TI	
EPD	28.2	-0.30	0.53	-0.058	0.72	157.8	88.7	
Rank	65	30	25	30	45	15	25	

Strong numerical values, homo black and homo polled genetic package.



R&R SHERIFF L315 Sells as Lot 30.

DVAuction
 Broadcasting Real-Time Auctions

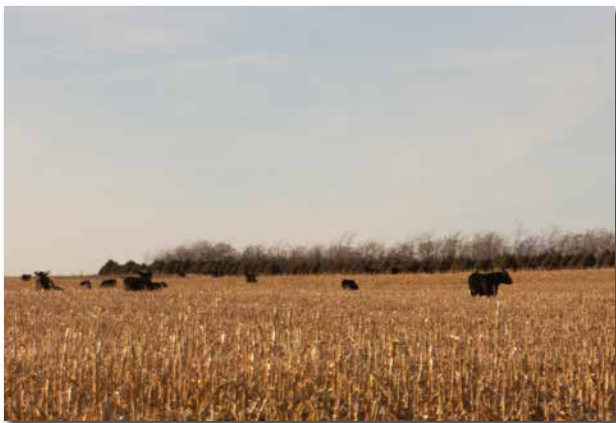
WATCH AND BID ONLINE FOR FREE

Visit www.DVAuction.com and Register.

Homeland - Golden Book - Favor Sons



R&R HOMELAND L354 Sells as Lot 32.



CABLES FAVOR 662L Sells as Lot 34.



CABLES FAVOR 76L Sells as Lot 35.

LOT 32 R&R HOMELAND L354 ♂GGP
 Hetero Black || Homo Polled 5/8 SM 3/8 AN
 3/25/2023 Bull ASA# 4260489
 BW: 90 Adj. WW: 670

REDHILL 672X X004 231A TKCC CARVER 65C
CLRS HOMELAND 327H **R&R MISS CARVER E773**
 CLRS ALWAYS XCELLENT R&R TYRA X049

	CE	BW	WW	YW	MCE	MILK	MWW	STAY
EPD	9.1	2.8	88.5	135.3	5.1	19.3	63.5	16.1
Rank	90	95	15	20	80	85	45	35
	CW	YG	MARB	BF	REA	API	TI	
EPD	35.2	-0.43	0.45	-0.080	1.06	137.6	87.1	
Rank	45	4	40	10	5	45	30	

This great looking Homeland son carries both the G+ and ATM genomic markers for growth.

LOT 33 R&R GOLDEN BOOK L310 ♂GGP
 Homo Black || Homo Polled PB SM
 3/15/2023 Bull ASA# 4260425
 BW: 78 Adj. WW: 702

KBHR HIGH ROAD E283 HOOK'S FALCON 19F
R&R KRJ GOLDEN BOOK H0135 **R&R MISS FALCON J1145**
 R&R DREAMS E769 ET R&R MISS RAZOR C560

	CE	BW	WW	YW	MCE	MILK	MWW	STAY
EPD	15.2	0.8	88.8	135.5	8.7	24.2	68.5	18.6
Rank	10	40	15	20	15	45	25	20
	CW	YG	MARB	BF	REA	API	TI	
EPD	22.2	-0.48	0.23	-0.073	1.08	154.0	90.4	
Rank	70	15	40	50	15	20	20	

L310 is out of a first-calf heifer with an adj. weaning wt. over 700 lbs. Golden Book is a High Road son sold in our 2021 sale to Julson Simmentals.

LOT 34 CABLES FAVOR 662L ♂GGP
 Homo Black || Homo Polled PB SM
 3/27/2023 Bull ASA# 4266398
 BW: 90 Adj. WW: 799

LCDR WITNESS 541C CCR COWBOY CUT 5048Z
LCDR FAVOR 149F **CABLES MS COWGIRL 662D**
 WS MISS SUGAR C4 C CROSS MISS INVASION

	CE	BW	WW	YW	MCE	MILK	MWW	STAY
EPD	8.4	2.8	94.5	147.6	3.4	23.0	70.2	20.1
Rank	90	85	10	10	90	55	20	10
	CW	YG	MARB	BF	REA	API	TI	
EPD	37.0	-0.39	0.35	-0.078	0.96	153.3	92.8	
Rank	20	55	25	50	35	20	15	

A power bull, with 5 traits in the top 10%. He is an easy fleshing, thick made bull. His dam and granddam are always top when it comes to producing, 662 rations 102 for Birth and 108 weaning on 6 head.

LOT 35 CABLES FAVOR 76L ♂GGP
 Homo Black || Homo Polled PB SM
 3/14/2023 Bull ASA# 4266403
 BW: 90 Adj. WW: 786

LCDR WITNESS 541C TKCC CARVER 65C
LCDR FAVOR 149F **CABLES MS CARVER 946G**
 WS MISS SUGAR C4 CABLE LOCK N LOAD 46B

	CE	BW	WW	YW	MCE	MILK	MWW	STAY
EPD	8.1	2.5	88.7	135.6	2.6	17.9	62.1	14.4
Rank	90	80	15	15	95	90	50	65
	CW	YG	MARB	BF	REA	API	TI	
EPD	34.4	-0.37	0.18	-0.070	0.92	129.9	84.6	
Rank	30	60	50	70	40	55	35	

A standout when it comes to phenotype, soundness, body dept and width. A true herd sire prospect out of a super uddered cow.



CABLES PROCLAMATION 901L Sells as Lot 36

LOT 36 **CABLES PROCLAMATION 901L**
 Homo Black || Homo Polled 5/8 SM 3/8 AN
 3/21/2023 Bull ASA# 4266382
 BW: 82 Adj. WW: 849

CCR COWBOY CUT 5048Z MUSGRAVE 316 STUNNER
WS PROCLAMATION E202 **CABLES MS STUNNER 901G**
 WS MISS SUGAR C4 CABLES FACTOR 1 701E

	CE	BW	WW	YW	MCE	MILK	MWW	STAY
EPD	12.8	0.1	93.6	144.1	5.2	32.1	78.7	17.3
Rank	50	50	5	10	80	5	2	25
	CW	YG	MARB	BF	REA	API	TI	
EPD	50.2	-0.03	0.56	-0.010	0.54	155.7	96.2	
Rank	10	95	25	90	75	20	10	

901L Ratioed 113 at weaning and number one out of 23 in his contemporary group. He has 5 traits in the top 10% and with a 900# weaning weight.

LOT 37 **CABLES PROCLAMATION 417L**
 Homo Black || Hetero Polled 5/8 SM 11/32 AN 1/32 MA
 4/10/2023 Bull ASA# 4266384
 BW: 84 Adj. WW: 784

CCR COWBOY CUT 5048Z LEMAR DAKOTA GOLD 18T
WS PROCLAMATION E202 **CABLE GOLD LADY 411B**
 WS MISS SUGAR C4 C-CROSS OVERDRIVE 611Z

	CE	BW	WW	YW	MCE	MILK	MWW	STAY
EPD	15.0	-0.2	80.0	124.8	8.5	23.6	63.8	15.2
Rank	25	45	35	35	25	55	45	45
	CW	YG	MARB	BF	REA	API	TI	
EPD	31.4	-0.12	0.42	-0.023	0.49	143.0	84.9	
Rank	55	80	45	70	85	35	40	

A big bodied, easy fleshing cattlemen's kind of bull.

LOT 39 **CABLES PROCLAMATION L7**
 Homo Black || Homo Polled PB SM
 3/24/2023 Bull ASA# 4266392
 BW: 86 Adj. WW: 750

CCR COWBOY CUT 5048Z W/C EXECUTIVE ORDER 8543B
WS PROCLAMATION E202 **GONSIOR/SS GISELLE G7**
 WS MISS SUGAR C4 J2 CLRWTR BREEZ E702

	CE	BW	WW	YW	MCE	MILK	MWW	STAY
EPD	11.9	1.1	88.0	133.0	4.3	24.8	68.7	14.3
Rank	45	50	20	20	80	40	25	65
	CW	YG	MARB	BF	REA	API	TI	
EPD	29.3	-0.29	0.35	-0.054	0.76	145.5	91.0	
Rank	45	90	25	85	75	30	20	

I know why Proclamation keeps on being one of the breeds most heavily used bull. This bull should sire good doing females that work.

LOT 41 **CABLES PROCLAMATION 508L**
 Homo Black || Homo Polled PB SM
 3/16/2023 Bull ASA# 4266402
 BW: 88 Adj. WW: 631

CCR COWBOY CUT 5048Z WCS MR RAZOR 1044Y
WS PROCLAMATION E202 **R&R MISS RAZOR A353**
 WS MISS SUGAR C4 R&R FIREFLY T750

	CE	BW	WW	YW	MCE	MILK	MWW	STAY
EPD	11.0	0.7	76.2	106.7	5.8	21.9	59.9	18.3
Rank	60	40	60	75	55	60	60	20
	CW	YG	MARB	BF	REA	API	TI	
EPD	23.2	-0.27	0.40	-0.054	0.60	149.0	84.4	
Rank	70	95	20	85	95	25	35	

The last A353 x Proclamation embryos, they have been consistent, year after year.

LOT 38 **CABLES PROCLAMATION 214L**
 Homo Black || Homo Polled 5/8 SM 3/8 AN
 3/31/2023 Bull ASA# 4266394
 BW: 88 Adj. WW: 749

CCR COWBOY CUT 5048Z S A V RENOWN 3439
WS PROCLAMATION E202 **JBS MISS RENOWN 214E**
 WS MISS SUGAR C4 JBS MISS LUCKY 731X

	CE	BW	WW	YW	MCE	MILK	MWW	STAY
EPD	10.4	1.6	89.0	138.8	5.2	25.3	69.9	15.3
Rank	80	80	15	15	80	40	20	45
	CW	YG	MARB	BF	REA	API	TI	
EPD	41.8	-0.13	0.40	-0.032	0.58	136.1	87.0	
Rank	25	80	45	55	70	50	30	

Another deep sided, easy fleshing Proclamation son. His daughters should be maternal.

LOT 40 **CABLES PROCLAMATION L882**
 Homo Black || Homo Polled PB SM
 3/23/2023 Bull ASA# 4266387
 BW: 88 Adj. WW: 661

CCR COWBOY CUT 5048Z WELSHS DEW IT RIGHT067T
WS PROCLAMATION E202 **CABLES MS DEW IT F882**
 WS MISS SUGAR C4 CABLE CHAMBERLAIN 682D

	CE	BW	WW	YW	MCE	MILK	MWW	STAY
EPD	11.8	1.5	79.3	116.5	5.6	21.9	61.5	17.6
Rank	45	55	45	50	60	60	55	30
	CW	YG	MARB	BF	REA	API	TI	
EPD	29.1	-0.24	0.35	-0.061	0.53	147.0	84.6	
Rank	45	95	25	70	99	30	35	

L882 has really come on. A complete, sound moving muscular bull.



WS PROCLAMATION E202 Sire of Lots 36-41.

Eagle - Black Ice - Standout Sons



CABLES EAGLE L156 Sells as Lot 42.



CABLES BLACK ICE 361L Sells as Lot 43.



CABLES STANDOPUT L850 Sells as Lot 45.

LOT 45 CABLES STANDOPUT L850
 Homo Black || Homo Polled PB SM
 3/18/2023 Bull ASA# 4266389
 BW: 86 Adj. WW: 663

OMF EPIC E27 W/C BANKROLL 811D
SCHOOLEY STANDOUT 27G CABLES MS BANK 03H
 CLRS BEAUTY QUEEN 420 B CABLE 948 495B

	CE	BW	WW	YW	MCE	MILK	MWW	STAY
EPD	11.0	1.0	78.8	115.3	6.0	21.3	60.6	13.0
Rank	60	45	50	55	50	65	60	80
	CW	YG	MARB	BF	REA	API	TI	
EPD	32.2	-0.25	0.35	-0.050	0.70	137.1	84.6	
Rank	35	95	25	95	85	45	35	

The Standout calves, all have a great disposition and calving ease. This cool looking baldie is out of 495B, who has 4 head at BHSS including one Champion Simmental bull. Cow ratios 100 for Birth and 105 weaning on 7 head.

LOT 42 CABLES EAGLE L156
 Homo Black || Homo Polled PB SM
 2/28/2023 Bull ASA# 4266383
 BW: 78 Adj. WW: 802

HOOK'S BLACK HAWK 50B RUBY'S TURNPIKE 771E
HOOK'S EAGLE 6E CABLES MS TURN PIKE J156
 HOOK'S CRYSTAL 1C R&R MISS RAZOR B456

	CE	BW	WW	YW	MCE	MILK	MWW	STAY
EPD	12.1	0.3	92.0	142.9	4.5	26.1	72.1	16.4
Rank	45	35	10	10	75	30	15	45
	CW	YG	MARB	BF	REA	API	TI	
EPD	42.0	-0.43	0.32	-0.063	1.26	152.9	94.8	
Rank	15	35	25	70	3	20	10	

A big spread bull, having an actual birth weight of 78# and 836# weaning weight, out of a first calf heifer. He has 6 Traits in the top 10%.

LOT 43 CABLES BLACK ICE 361L
 Homo Black || Homo Polled 1/2 SM 1/2 AN
 3/13/2023 Bull ASA# 4266375
 BW: 92 Adj. WW: 719

TJ FROSTY 318E PVF INSIGHT 0129
TJ BLACK ICE 451H CABLES MISS INSIGHT 361G
 TJ 95A CABLE GRANDMASTER 361A

	CE	BW	WW	YW	MCE	MILK	MWW	STAY
EPD	6.6	2.4	81.7	128.7	2.3	32.8	73.8	17.0
Rank	99	90	30	30	99	3	10	25
	CW	YG	MARB	BF	REA	API	TI	
EPD	51.2	-0.12	0.18	-0.021	0.75	118.2	76.3	
Rank	10	80	85	70	40	75	70	

I think the Ice bulls will work well on Angus cows. 361G is up headed, muscular, and heavy structured. Black Ice is now deceased.

LOT 44 CABLES BLACK ICE 951L
 Homo Black || Homo Polled 1/2 SM 1/2 AN
 3/12/2023 Bull ASA# 4266378
 BW: 88 Adj. WW: 659

TJ FROSTY 318E CABLES BIG BOY 380E
TJ BLACK ICE 451H CABLES MS 9501G
 TJ 95A EAGLE PASS EMELINE 4501

	CE	BW	WW	YW	MCE	MILK	MWW	STAY
EPD	8.0	2.2	79.1	124.7	3.9	25.9	65.5	15.8
Rank	95	90	40	35	95	35	35	40
	CW	YG	MARB	BF	REA	API	TI	
EPD	43.8	-0.05	0.34	-0.016	0.47	125.4	78.2	
Rank	20	95	55	85	85	65	65	

A SimAngus bull that should add pounds and maternal, tracing back to 4501.

LOT 46 CABLES STANDOUT 16L
 Homo Black || Homo Polled PB SM
 3/8/2023 Bull ASA# 4266391
 BW: 78 Adj. WW: 686

OMF EPIC E27 LCDR FAVOR 149F
SCHOOLEY STANDOUT 27G CABLES FAVOR 16J
 CLRS BEAUTY QUEEN 420 B CABLE LOCK N LOAD 46B

	CE	BW	WW	YW	MCE	MILK	MWW	STAY
EPD	11.5	0.0	74.5	113.2	5.6	17.6	54.8	16.7
Rank	50	30	65	60	60	90	85	40
	CW	YG	MARB	BF	REA	API	TI	
EPD	28.0	-0.26	0.28	-0.056	0.63	142.1	81.4	
Rank	50	95	30	85	95	35	45	

16L is low birth, high Doc, Homo polled and Homo Blk. He is a sound moving PB, grand dam posts 103 and 105 on 5 head.

LOT
47

CABLES STANDOUT 173L

Homo Black || Homo Polled PB SM
3/8/2023 Bull ASA# 4266390
BW: 82 Adj. WW: 747

OMF EPIC E27

W/C RELENTLESS 32C

SCHOOLEY STANDOUT 27G

CABLES MS RELENTLESS 173J

CLRS BEAUTY QUEEN 420 B

R&R MISS RAZOR A353

	CE	BW	WW	YW	MCE	MILK	MWW	STAY
EPD	10.8	0.8	71.6	96.2	5.1	18.2	53.9	15.3
Rank	60	40	75	90	65	90	90	55
	CW	YG	MARB	BF	REA	API	TI	
EPD	19.6	-0.27	0.35	-0.050	0.57	137.4	79.7	
Rank	80	95	25	95	99	45	55	

A great bull to use on young cows, with maternal going back to the 353 cow.



SCHOOLEY STANDOUT 27G Sire of Lots 45-47.

LOT
48

CABLES STUNNER 946L

Homo Black || Homo Polled 1/2 SM 1/2 AN
3/9/2023 Bull ASA# 4266396
BW: 84 Adj. WW: 667

LD CAPITALIST 316

TKCC CARVER 65C

MUSGRAVE 316 STUNNER

CABLES MS CARVER 946G

MCATL BLACKBIRD 831-1378

CABLE LOCK N LOAD 46B

	CE	BW	WW	YW	MCE	MILK	MWW	STAY
EPD	10.9	0.4	75.3	116.8	1.3	25.6	63.3	12.9
Rank	75	60	55	55	99	40	45	70
	CW	YG	MARB	BF	REA	API	TI	
EPD	45.3	0.03	0.47	0.012	0.46	131.4	81.2	
Rank	20	99	35	99	90	55	50	

946L and his dam had footrot this summer, he weaned off a bit light, but is catching up now. A 1/2 blood with a lot of style and muscle in sound moving herd bull.



CABLES STUNNER 946L Sells as Lot 48.



CABLES SUGAR RAY L018 Sells as Lot 50.

LOT
50

CABLES SUGAR RAY L018

Homo Black || Homo Polled 5/8 SM 3/8 AN
3/10/2023 Bull ASA# 4266404
BW: 84 Adj. WW: 768

LCDR FAVOR 149F

R&R SUDDEN IMPACT F813

ES SUGAR RAY JE37

CABLES MS IMPACT H018

ES E37

CABLES MISS SHAQ C517

	CE	BW	WW	YW	MCE	MILK	MWW	STAY
EPD	11.5	1.7	91.3	144.6	5.8	25.8	71.5	16.6
Rank	65	80	10	10	70	35	15	30
	CW	YG	MARB	BF	REA	API	TI	
EPD	44.6	-0.24	0.34	-0.041	0.88	138.8	87.8	
Rank	20	45	55	45	20	45	30	

I really like my Sugar Ray calves. They get the power of Favor and performance of United. A bull that reads well on paper, posting a 811 actual weaning weight.

LOT
49

CABLES TURNING POINT 502L

Homo Black || Homo Polled 1/2 SM 1/2 AN
3/21/2023 Bull ASA# 4266380
BW: 84 Adj. WW: 742

PLATTEMERE WEIGH UP K360

R&R CHAMBERLAIN X744

STEVENSON TURNING POINT

CABLE CHERRY ROSE 502C

STEVENSON PRIDE 1167X

C CROSS MISS INVASION

	CE	BW	WW	YW	MCE	MILK	MWW	STAY
EPD	14.4	-0.2	79.5	123.6	5.8	23.8	63.9	18.8
Rank	30	45	40	40	70	55	40	10
	CW	YG	MARB	BF	REA	API	TI	
EPD	43.9	-0.11	0.37	-0.025	0.61	146.0	83.1	
Rank	20	85	50	70	65	30	45	

A growthy 1/2 blood, out of a strong cow family.

LOT
51

CABLES SUGAR RAY 040L

Homo Black || Homo Polled 5/8 SM 3/8 AN
3/15/2023 Bull ASA# 4266397
BW: 82 Adj. WW: 769

LCDR FAVOR 149F

CABLES DEW IT RIGHT 66D

ES SUGAR RAY JE37

CABLES COW PATTY 040H

ES E37

CABLES COW PATTY 740E

	CE	BW	WW	YW	MCE	MILK	MWW	STAY
EPD	11.9	0.5	88.5	138.2	5.3	20.6	64.9	15.9
Rank	60	60	15	15	80	80	40	40
	CW	YG	MARB	BF	REA	API	TI	
EPD	39.5	-0.29	0.20	-0.042	0.96	130.9	83.6	
Rank	30	30	80	45	15	55	40	

A deep bodied, wide made percentage bull that reads well on paper.

Cable C Cross Ranch Bulls



CABLES HIGHWAY 088L Sells as Lot 53.

LOT 53 **CABLES HIGHWAY 088L**
 Homo Black || Homo Polled PB SM
 3/10/2023 Bull ASA# 4266399
 BW: 90 Adj. WW: 765

KBHR HIGH ROAD E283 CABLES LOCK N LOAD 11E
CABLES HIGHWAY 644J CABLES MS 11E 088H
 CABLES DEW IT 644D CABLES MISS SHAQ 788E

	CE	BW	WW	YW	MCE	MILK	MWW	STAY
EPD	10.6	2.6	81.3	124.4	4.8	22.3	63.0	17.6
Rank	65	80	40	35	70	60	45	30
	CW	YG	MARB	BF	REA	API	TI	
EPD	36.1	-0.37	0.23	-0.069	0.95	139.3	82.3	
Rank	25	60	40	70	35	40	45	

Here is a big, soggy, deep bodied, wide made, free moving bull.

LOT 55 **CABLES O FACTOR L712**
 Homo Black || Homo Polled 1/2 SM 1/2 AN
 3/19/2023 Bull ASA# 4266381
 BW: 82 Adj. WW: 727

S A V FINAL ANSWER 0035 TKCC CARVER 65C
VIN-MAR O`REILLY FACTOR CABLES MS CARVER 712E
 VIN-MAR EDELLA 2827 CABLES MS TITANIUM 012X

	CE	BW	WW	YW	MCE	MILK	MWW	STAY
EPD	12.2	-0.2	72.3	110.5	7.0	23.8	59.6	13.5
Rank	60	45	65	65	50	55	65	65
	CW	YG	MARB	BF	REA	API	TI	
EPD	34.8	-0.09	0.28	-0.020	0.46	124.4	76.1	
Rank	45	85	65	85	90	70	70	

A nice complete SimAngus bull that is a maternal brother to last year BHSS entry, that went to a repeat buyer from Kyle.

LOT 57 **CABLES NIGHT WATCH 152L**
 Homo Black || Homo Polled PB SM
 2/26/2023 Bull ASA# 4266386
 BW: 72 Adj. WW: 737

CCR ANCHOR 9071B RUBYS TURNPIKE 771E
W/C NIGHT WATCH 84E CABLES MS TURN PIKE 152J
 MISS WERNING KP 8543U CABLE OREILLY FACTOR751E

	CE	BW	WW	YW	MCE	MILK	MWW	STAY
EPD	15.0	-1.0	79.0	118.9	7.3	29.5	68.8	12.6
Rank	15	15	45	45	30	10	25	80
	CW	YG	MARB	BF	REA	API	TI	
EPD	31.3	-0.34	0.12	-0.056	0.92	134.0	83.5	
Rank	40	75	65	85	40	50	40	

A low birth Purebred that posted a 775 actual weaning weight out of a first calf heifer.

LOT 52 **CABLES SUGAR RAY 013L**
 Homo Black || Homo Polled 5/8 SM 3/8 AN
 3/17/2023 Bull ASA# 4266401
 BW: 86 Adj. WW: 818

LCDR FAVOR 149F CDI INNOVATOR 325D
ES SUGAR RAY JE37 CABLES MS INNOVATOR 013H
 ES E37 C-CROSS CHAMBERLAIN 212Z

	CE	BW	WW	YW	MCE	MILK	MWW	STAY
EPD	10.4	2.1	94.9	146.8	5.2	23.8	71.2	14.8
Rank	80	85	4	10	80	55	15	50
	CW	YG	MARB	BF	REA	API	TI	
EPD	43.1	-0.30	0.32	-0.053	0.96	133.1	88.8	
Rank	25	30	60	30	15	55	25	

841 Actual weaning weight, ratios 109 and 3rd of 23.

LOT 54 **CABLES TURNPIKE 701L**
 Black || Polled 3/4 SM 1/4 AN
 3/26/2023 Bull ASA# 4266931
 BW: 94 Adj. WW: 637

WBF SIGNIFICANT B132 VIN-MAR O`REILLY FACTOR
RUBYS TURNPIKE 771E CABLES FACTOR 1 701E
 RUBYS MISS CLEO 240Z CABLE ROSE 501C

	CE	BW	WW	YW	MCE	MILK	MWW	STAY
EPD	9.1	2.8	85.4	139.0	3.7	28.3	70.5	15.8
Rank	90	95	20	15	95	20	15	40
	CW	YG	MARB	BF	REA	API	TI	
EPD	48.0	-0.34	0.15	-0.076	0.97	120.8	79.0	
Rank	15	20	90	10	10	75	60	

This bull didn't wean or run with the other group. It is getting tougher to find a Turnpike. Good carcass numbers his dam is Grand dam of lot 36.

LOT 56 **CABLES BO 270L**
 Homo Black || Homo Polled 1/2 SM 1/2 AN
 2/20/2023 Bull ASA# 4266377
 BW: 92 Adj. WW: 768

ES BOHANNON GE28 R&R OVERDRIVE X111
863J C-CROSS MS OVERDRIVE 270
 CABLES MS INSIGHT 863F 700

	CE	BW	WW	YW	MCE	MILK	MWW	STAY
EPD	9.3	2.3	80.6	125.0	4.6	24.3	64.6	14.4
Rank	90	90	35	35	85	50	40	55
	CW	YG	MARB	BF	REA	API	TI	
EPD	46.5	-0.15	0.24	-0.030	0.71	119.6	77.0	
Rank	15	75	75	70	45	75	65	

A bull that weaned off at 908 lbs. actual, ratio 106 at birth and 102 weaning. 270's momma is a 14-year-old cow that bred up and has an udder of a 2-year-old.

LOT 58 **CABLES JUSTIFIED 671L**
 Homo Black || Homo Polled PB AN
 3/26/2023 Bull ASA# 4266385
 BW: 80 Adj. WW: 771

CONNELLY JUDGMENT WR JOURNEY-1X74
KG JUSTIFIED 3023 EGL EMELINE 6714
 KG MISS MAGIC 1443 EAGLE PASS EMELINE 4501

	CE	BW	WW	YW	MCE	MILK	MWW	STAY
EPD	15.4	-1.7	76.9	123.8	8.6	26.9	65.4	12.1
Rank	20	25	45	40	25	30	35	80
	CW	YG	MARB	BF	REA	API	TI	
EPD	43.8	0.17	0.86	0.041	0.25	143.7	84.0	
Rank	20	99	4	99	99	35	40	

PB Angus bull, that should work well on heifers with a -1.7 Birth, out of a strong cow family.

Name	Breeds	CE	BW	WW	YW	MCE	Milk	MWW	Stay	CW	YG	Marb	BF	RE	API	TI
PUREBRED AND 3/4 SIMMENTAL																
LCDR FAVOR 149F	PB SM	7.1	2.5	105.9	168.0	1.8	19.9	72.8	16.8	43.0	-0.41	0.22	-0.074	1.15	144.1	96.8
WS PROCLAMATION E202	PB SM	13.7	0.5	97.8	145.8	7.7	27.9	76.7	17.0	37.7	-0.20	0.56	-0.047	0.64	168.7	102.9
SCHOOLEY STANDOUT 27G	PB SM	14.1	-2.5	67.5	94.2	7.7	18.2	51.9	17.8	22.5	-0.13	0.50	-0.037	0.29	159.4	85.0
R&R TESTAMENT J155	PB SM	15.7	-1.7	75.9	118.9	9.6	32.9	70.8	21.0	34.7	-0.18	0.48	-0.044	0.56	171.3	91.4
KRJ DAKOTA OUTLAW G974	PB SM	7.3	4.1	106.3	158.2	2.0	20.6	73.6	11.6	34.7	-0.68	0.00	-0.142	1.32	118.8	90.3
OMF EPIC E27	PB SM	13.9	-1.0	89.1	131.9	8.9	22.5	67.0	19.0	32.8	-0.27	0.24	-0.045	0.79	154.7	91.2
HOOK`S EAGLE 6E	3/4 SM 1/4 AN	14.3	-2.1	98.9	154.6	4.9	21.4	70.8	17.1	42.2	-0.41	0.60	-0.042	1.37	168.3	104.2
ES SUGAR RAY JE37	3/4 SM 1/4 AN	12.1	1.0	101.0	160.0	5.1	20.4	70.9	16.9	37.9	-0.31	0.28	-0.041	1.03	142.5	93.0

SIMANGUS™

CLRS HOMELAND 327H	5/8 SM 3/8 AN	10.4	0.6	87.7	141.9	6.6	19.7	63.5	21.9	40.5	-0.51	0.63	-0.089	1.29	166.4	94.9
TJ BLACK ICE 451H	1/2 SM 1/2 AN	4.8	2.8	104.0	160.0	0.7	37.3	89.2	14.2	65.8	-0.01	0.21	-0.013	0.65	119.1	89.5

PUREBRED ANGUS

SQUARE B TRUE NORTH 8052	PB AN	19.9	-4.1	75.8	131.2	12.0	35.5	72.5	12.6	36.2	0.11	0.95	0.052	0.41	161.2	90.6
--------------------------	-------	------	------	------	-------	------	------	------	------	------	------	------	-------	------	-------	------



SQUARE B TRUE NORTH



HOOK'S EAGLE 6E



SCHOOLEY STANDOUT 27G



WS PROCLAMATION E202



LCDR FAVOR 149F



R&R TESTAMENT J155

2024 Purebred Simmental Percentile Table

%	\$API	\$TI	CE	BW	WW	ADG	YW	MCE	MILK	MWW	STAY	DOC	CW	YG	MARB	BF	REA	SF
1	184.70	104.33	18.60	-3.80	102.60	0.37	159.70	11.20	34.20	79.80	22.60	19.10	59.00	-0.56	0.74	-0.12	1.35	-0.47
2	178.46	101.67	17.70	-3.10	99.40	0.36	154.50	10.60	32.80	77.80	21.70	18.20	54.80	-0.54	0.67	-0.11	1.28	-0.45
3	174.70	99.61	17.10	-2.60	97.40	0.35	151.00	10.20	31.90	76.50	21.00	17.60	52.20	-0.53	0.62	-0.11	1.24	-0.44
4	171.76	98.17	16.60	-2.40	95.80	0.34	148.50	9.90	31.30	75.50	20.60	17.10	50.40	-0.52	0.58	-0.11	1.22	-0.43
5	169.14	96.98	16.30	-2.10	94.60	0.33	146.40	9.60	30.80	74.70	20.30	16.80	48.80	-0.51	0.55	-0.10	1.19	-0.43
10	160.62	93.01	15.00	-1.20	90.60	0.31	139.00	8.80	29.00	71.90	19.30	15.50	43.80	-0.48	0.45	-0.10	1.11	-0.41
15	154.76	90.30	14.20	-0.70	87.80	0.30	134.10	8.20	27.90	69.90	18.60	14.70	40.50	-0.47	0.39	-0.09	1.06	-0.40
20	149.91	88.25	13.60	-0.30	85.70	0.28	130.40	7.70	26.90	68.30	18.10	14.00	38.10	-0.45	0.34	-0.09	1.02	-0.39
25	145.75	86.32	13.10	0.10	83.80	0.27	127.10	7.30	26.10	66.90	17.60	13.50	36.10	-0.44	0.29	-0.09	0.99	-0.38
30	142.04	84.75	12.60	0.40	82.10	0.27	124.20	6.90	25.40	65.60	17.10	13.10	34.30	-0.43	0.26	-0.08	0.96	-0.37
35	138.86	83.29	12.30	0.70	80.70	0.26	121.60	6.60	24.70	64.50	16.70	12.60	32.70	-0.42	0.23	-0.08	0.94	-0.36
40	135.99	81.92	11.90	0.90	79.40	0.25	119.10	6.30	24.10	63.30	16.30	12.20	31.20	-0.41	0.20	-0.08	0.91	-0.36
45	133.23	80.59	11.60	1.20	78.20	0.24	117.00	6.00	23.50	62.20	15.80	11.90	29.80	-0.40	0.17	-0.08	0.89	-0.35
50	130.56	79.37	11.20	1.40	77.10	0.24	114.80	5.70	22.90	61.20	15.40	11.50	28.40	-0.39	0.15	-0.07	0.87	-0.34
55	128.07	78.16	10.90	1.60	75.80	0.23	112.70	5.50	22.30	60.20	14.90	11.10	27.10	-0.38	0.13	-0.07	0.85	-0.33
60	125.49	77.00	10.60	1.90	74.70	0.22	110.60	5.20	21.80	59.10	14.40	10.70	25.80	-0.36	0.11	-0.07	0.83	-0.33
65	122.95	75.84	10.20	2.10	73.50	0.22	108.50	4.90	21.10	58.10	13.90	10.30	24.50	-0.35	0.08	-0.07	0.80	-0.32
70	120.52	74.73	9.80	2.30	72.20	0.21	106.30	4.70	20.50	57.00	13.40	9.90	23.20	-0.34	0.07	-0.06	0.78	-0.31
75	118.14	73.63	9.40	2.60	71.00	0.20	103.90	4.40	19.90	56.00	12.80	9.40	21.90	-0.33	0.04	-0.06	0.76	-0.30
80	115.72	72.47	8.90	2.80	69.60	0.19	101.50	4.00	19.20	54.90	12.20	8.80	20.30	-0.31	0.02	-0.06	0.73	-0.29
85	112.99	71.08	8.30	3.10	67.90	0.19	98.70	3.60	18.40	53.70	11.60	8.10	18.70	-0.30	0.00	-0.05	0.70	-0.28
90	110.11	69.40	7.50	3.60	65.90	0.17	95.20	3.20	17.30	52.30	10.80	7.10	16.60	-0.27	-0.04	-0.05	0.66	-0.27
95	105.86	67.09	6.30	4.30	62.90	0.16	90.00	2.40	15.80	50.10	9.80	5.50	13.70	-0.23	-0.08	-0.04	0.59	-0.25
Avg	130.56	79.37	11.20	1.40	77.10	0.24	114.80	5.70	22.90	61.20	15.40	11.50	28.40	-0.39	0.15	-0.07	0.87	-0.34

2024 Hybrid Percentile Table

%	\$API	\$TI	CE	BW	WW	ADG	YW	MCE	MILK	MWW	STAY	DOC	CW	YG	MARB	BF	REA	SF
1	185.66	103.09	20.80	-5.70	100.70	0.40	161.70	12.50	35.10	80.00	22.00	20.20	66.90	-0.48	1.01	-0.10	1.24	-0.48
2	179.11	100.38	19.70	-4.90	97.50	0.38	156.50	11.80	33.60	77.90	21.10	19.10	62.30	-0.45	0.91	-0.09	1.19	-0.47
3	174.82	98.73	19.00	-4.30	95.70	0.37	152.90	11.30	32.70	76.50	20.50	18.40	59.70	-0.43	0.86	-0.09	1.16	-0.45
4	171.80	97.47	18.50	-4.00	94.10	0.36	150.00	11.00	32.10	75.40	20.10	17.90	57.60	-0.42	0.81	-0.09	1.12	-0.45
5	169.36	96.46	18.10	-3.70	92.90	0.36	147.70	10.70	31.50	74.40	19.70	17.50	56.00	-0.41	0.78	-0.08	1.09	-0.44
10	160.84	93.07	16.70	-2.60	88.80	0.33	140.70	9.80	29.70	71.60	18.60	16.30	50.60	-0.37	0.68	-0.07	0.99	-0.42
15	155.10	90.62	15.80	-2.00	86.10	0.32	136.00	9.20	28.50	69.60	17.80	15.40	47.20	-0.34	0.61	-0.07	0.93	-0.40
20	150.83	88.73	15.20	-1.50	83.90	0.31	132.10	8.70	27.70	68.00	17.20	14.80	44.80	-0.32	0.56	-0.06	0.88	-0.39
25	147.13	87.05	14.60	-1.10	82.10	0.30	128.70	8.30	26.90	66.60	16.70	14.30	42.70	-0.30	0.51	-0.06	0.84	-0.38
30	143.79	85.48	14.10	-0.70	80.40	0.29	125.70	8.00	26.20	65.50	16.20	13.80	40.80	-0.28	0.47	-0.05	0.80	-0.38
35	140.52	84.03	13.70	-0.40	78.90	0.28	123.00	7.60	25.60	64.30	15.70	13.40	39.10	-0.26	0.44	-0.05	0.77	-0.37
40	137.41	82.67	13.20	-0.10	77.50	0.27	120.50	7.30	25.00	63.30	15.30	13.00	37.40	-0.25	0.40	-0.05	0.74	-0.36
45	134.41	81.29	12.80	0.20	76.20	0.26	118.10	7.00	24.40	62.30	14.80	12.60	35.70	-0.23	0.37	-0.04	0.71	-0.35
50	131.44	79.98	12.50	0.40	74.90	0.25	115.70	6.70	23.80	61.20	14.40	12.20	34.20	-0.22	0.34	-0.04	0.69	-0.34
55	128.53	78.59	12.10	0.70	73.70	0.25	113.30	6.40	23.30	60.30	13.90	11.90	32.70	-0.20	0.31	-0.04	0.66	-0.34
60	125.42	77.25	11.70	1.00	72.50	0.24	110.90	6.10	22.80	59.30	13.50	11.50	31.10	-0.18	0.29	-0.03	0.63	-0.33
65	122.43	75.78	11.30	1.20	71.20	0.23	108.50	5.90	22.20	58.30	13.00	11.20	29.60	-0.16	0.26	-0.03	0.60	-0.32
70	119.17	74.32	11.00	1.50	69.80	0.22	106.20	5.50	21.50	57.20	12.40	10.70	28.00	-0.15	0.24	-0.02	0.57	-0.31
75	115.99	72.85	10.50	1.80	68.30	0.22	103.70	5.20	20.90	56.00	11.80	10.30	26.20	-0.13	0.21	-0.02	0.54	-0.31
80	112.46	71.30	10.00	2.20	66.60	0.21	100.80	4.80	20.20	54.70	11.20	9.80	24.30	-0.11	0.18	-0.02	0.50	-0.30
85	109.02	69.61	9.40	2.60	64.60	0.20	97.30	4.40	19.30	53.10	10.40	9.00	22.10	-0.08	0.14	-0.01	0.46	-0.28
90	104.32	67.60	8.60	3.10	62.00	0.19	93.10	3.80	18.20	51.30	9.30	8.10	19.40	-0.05	0.10	0.00	0.40	-0.27
95	98.00	64.67	7.40	3.80	58.00	0.17	86.60	2.90	16.60	48.60	7.90	6.40	15.20	0.00	0.05	0.01	0.32	-0.24
Avg	131.44	79.98	12.50	0.40	74.90	0.25	115.70	6.70	23.80	61.20	14.40	12.20	34.20	-0.22	0.34	-0.04	0.69	-0.34



ASA Quick Reference to EPDs, Indexes and \$Values

EXPECTED PROGENY DIFFERENCES (EPDS): EPDs are the most accurate and effective tool available for comparing genetic levels. In using EPDs, the difference between two sires' EPDs represents the unit difference expected in the performance of their progeny. For example, if sires A and B have EPDs of +10 and -5, a 15-unit difference would be expected in their progeny (moving from -5 to +10 yields 15 units). Key to using EPDs is knowing in what units they are expressed. For example, if the above case referred to weaning weight EPDs, sire A would be expected to sire 15 pounds more weaning weight than sire B. If calving ease was the trait, sire A would be expected to sire 15 percent more unassisted births in first-calf heifers; in other words, if sire B sired 30 assists in a group of 100 heifers, we would expect sire A to require 15 assists. A percentile-ranking chart is required to determine where a bull's EPDs rank him relative to other bulls in the breed. For more detailed information about EPDs and \$ indexes, visit www.simmental.org.

Listed below are the units in which ASA EPDs are expressed:

ALL-PURPOSE INDEX (API): Dollars per cow exposed under an all-purpose-sire scenario.

BACK FAT (BF): Inches of carcass backfat at 475 days.

BIRTH WEIGHT (BW): Pounds of birth weight.

CALVING EASE (CE): Percent of unassisted births when used on heifers.

CARCASS WEIGHT (CW): Pounds of carcass weight at 475 days.

DOCILITY (DOC): Percent of offspring receiving a disposition score of 1 (docile).

MATERNAL CALVING EASE (MCE): Percent of unassisted births in first-calving daughters.

MILK (MLK): Pounds of weaning weight due to milk.

MARBLING (MARB): Carcass marbling score at 475 days.

MATERNAL WEANING WEIGHT (MWW): Pounds of weaning weight due to milk and growth.

RIBEYE AREA (REA): Square inches of carcass ribeye at 475 days.

TERMINAL INDEX (TI): Dollars per cow exposed under a terminal-sire scenario.

WEANING WEIGHT (WW): Pounds of weaning weight.

YEARLING WEIGHT (YW): Pounds of yearling weight.

YIELD GRADE (YG): Carcass yield grade score at 475 days.

\$ INDEXES: Though EPDs allow for the comparison of genetic levels for many economically important traits, they only provide pieces of the economic puzzle. This is where \$ indexes come in. Through well-conceived, rigorous mathematical computation, \$ indexes blend EPDs and economics to estimate an animal's overall impact on integrated commercial production. The same technology that led to the dramatic progress in swine, poultry and dairy genetics over the last several decades was used to develop the following \$ indexes:

ALL-PURPOSE INDEX (API): Evaluates sires for use on the entire cow herd (bred to both Angus first-calf heifers and mature cows) with the portion of their daughters required to maintain herd size retained and the remaining heifers and steers put on feed and sold grade and yield.

TERMINAL INDEX (TI): Evaluates sires for use on mature Angus cows with all offspring put on feed and sold grade and yield.

For more detailed information about EPDs and \$ indexes, visit: www.simmental.org



Improved Buying Confidence with Greater Genomic **ASSURANCE**

Access to more and better information has always been key to making wise decisions. The evolution and improvement of genetic evaluation tools too has given us an ever-clearer picture of the true genetic makeup of cattle and thus a better view of the value proposition. RightMate, powered by Top Genomics LLC is taking the evaluation of genetics and genomics one giant step further. By combining specific genomic information with the long-proven value of EPDs, this new advancement in technology improves our depth and precision when evaluating the actual ability to transmit value and profit.

The 3 Accreditation Logos below are designed to simplify bull selection and improve buyer confidence by more accurately describing the genetics offered and by reducing risk. What this means to you as a customer is a much greater assurance that you are getting both what you want and need from the genetics you purchase. What it means to your seedstock provider is access to RightMate technology that simply sets them apart from the rest of the industry.



ACCREDITED GENOMIC PLUS – For the majority of producers who simply need consistent and balanced genetic improvement, without genomic setbacks, G+ Accredited bulls should be on your list for premium purchase. These sires will absolutely move you forward for both cost reduction and income producing traits and substantially reduce risk when compared to all other evaluation programs. It's simple, the right genes are in these bulls to help secure a profitable future and they have great EPDs to match!



ACCREDITED CALVING EASE – Simply find bulls with the ACE logo for third party Accredited, secure Calving Ease bulls. Though we have had tools in the past to assist in choosing heifer bulls, we've never had one nearly this effective. The reduced risk that comes with this genomic certification will simply make your decisions easier and your heifer calving season more successful. Purchase special purpose ACE bulls with confidence. They will deliver consistent and predictable calving ease.



ACCREDITED TERMINAL MATE – Just like an ATM machine makes it simpler to access your cash, the ATM Logo highlights bulls accredited to generate extra cash income as soon as your next calf crop! These bulls are meant specifically to use only on mature cows and for the purpose of adding performance, pay weight and end product value to market.

R & R CATTLE COMPANY
Steve & Elaine Reimer
25657 345th Ave
Chamberlain, SD 57325

Presorted
First Class
US Postage
PAID
SlateGroup

Consistency. Uniformity. Integrity. Dependability.



At the Ranch | | Chamberlain, SD
1:00 PM CT

February 16, 2024

annual production sale

**58 Simmental and SimAngus™ Bulls
Including lots from guest consignor Cable C Cross Ranch**