

DRAKE SIMMENTAL

Bull and Female Sale

1.26.24

Drake Sale Facility, Centerville, IA
1:00 PM (CT)

70 Simmental, SimAngus™ Age-Advantaged and Yearling Bulls
40 Spring Calving SimAngus™ Bred Heifers

Welcome to the Sale.

Lucky ain't we. This has become a bit of a Drake family mantra. When something unfortunate occurs, but it could have been worse, we will say "Lucky, ain't we". For example, we will find a dead bull in the bull pen but he isn't one of the best bulls, we will wryly state, "lucky, ain't we". It is short and simple, but carries a lot of meaning. It reflects humor, resilience and persistence. A sense of "it could have been worse" optimism. When I was about ten years old I had a cow that literally backed up to a barbed wire fence and had a calf on top the fence. The calf was hanging dead on the fence when we found it. Dad had a set of twins and thought he would help me by putting one of the twins on my cow. He caught my cow and tied her to a tree with a halter and went to get the calf. When he returned, he found that the nose strap on the halter had broken and the cow, pulling back, had choked to death. At that point you have to decide- you love this lifestyle, or you don't. You are in for the long haul or you aren't. You continue to invest and work it or you don't. Yes or no . Our family has chosen "yes" in southern Iowa for 170 years, 124 of those years on the home farm where mom and dad still reside. Today, times are good. Prices are high and feed is plentiful, if not cheap. We continue to invest-time, energy and money- to provide the best genetics possible to other seedstock producers and to commercial cattlemen and women. We believe the effort is bearing fruit and welcome you to review our 2024 sale offering of 70 bulls-fall and spring bulls, purebred Simmental and SimAngus hybrids, and 40 bred heifers, all bred to breed leading sires and due to start calving shortly after the sale.

The bulls are highlighted by the first calves of Five Star Jackson, our \$65,000 purchase from Five Star Ranch in Minnesota. We stretched the bull budget because we felt Jackson was a unique opportunity- a bull with outstanding genetics that also carries an outstanding phenotype . Dad went to the sale while I was at the Iowa Beef Expo. He called and wanted to know how high I was comfortable going and I said, "use your own judgment". When he called to say he had bid \$65,000 I said "I didn't know I had to tell you to use GOOD judgment". But, as usual, dad was right. Jackson's first calf crop has been nothing short of exhilarating- massive growth and weights with fantastic phenotypes. Please study these Jackson bulls and the females bred to him- we believe he will be a difference maker. We also have a number of hybrid bulls by the purebred Angus bull, Poss Deadwood. Few bulls we have ever used transmit growth and power in the way that Deadwood does and we invite you to also analyze these Deadwood sons. We also showcase our first sons of TJ War Paint, the \$70,000 Triangle J sale topper we own with ABS, Triangle J and Trauernicht Simmentals. Reports around the country indicate War Paint is adding substantial growth with an excellent phenotype and we think you will agree with that assessment and be impressed. You will continue to find sons of Eagle as we still can't find a bull that does so much so right so consistently. Sons of our Bonafide bull, a son of Eagle, continue to impress and are regularly favorites. You will also find bulls by Honor and other breed leaders. We also feature several sets of full brothers for those of you looking for uniform genetics.

The bred heifers are the most attractive set we have put together to date and include daughters of Eagle's mother, an amazing daughter of KBHR Backroads bred to Gibbs Essential, a beautiful daughter of Bonafide bred to Revolution, daughters of Eagle and other breed leading sires-all bred to bulls with outstanding, balanced EPDs, led by the service of a number of the heifers to Five Star Jackson. We can't wait for you to see this set of heifers.

We are still here...170 years after our family arrived by covered wagon...and we look forward to seeing you here, in person or virtually, on January 26, 2024. Please call, email or text with any questions.

The Drake Simmental Crew



Drake
Simmental

DRAKE SIMMENTAL

Bull and Female Sale

1.26.24

**Drake Sale Facility
Centerville, IA
1:00 PM (CT)**

DELIVERY AND BOARD

- Free delivery to farm or central points within 100-mile radius of the farm
- Free delivery for of gross purchases over \$30,000 to central points in the US
- \$200 per head delivery to central points in states bordering Iowa
- Bulls will be cared for free of charge until April 1st
- \$200 off bulls if they are picked up within one week from the sale

SALE VET

Animal Health Center, Dr. Dewey Nibe

TRUCKING

Please see page 37 for more information.

SALE LOCATION

24366 570th Street
Centerville, IA 52544

SALE DAY CONTACTS

Mason Harlan 641.895.5735
Flint Drake 563.580.1053
Denny Drake 641.658.2288
Larry Drake 641.895.9422
Marty Ropp 406.581.7835
Corey Wilkins 256.590.2487

AUCTIONEER

Tracey Herl 402.469.3852

MARKETING REPRESENTATIVES

Austin Brandt 712.621.4829
Midwest Marketer
Mike Sorenson 641.745.7949
American Cattleman
Jeremie Ruble 406.581.7940
Marshall Ruble 515.231.3198

SCHEDULE OF EVENTS

Thursday, January 25

All Day Cattle available for viewing and pasture tours

Friday, January 26

8:00 AM Cattle available for viewing
11:30 AM Lunch
1:00 PM Sale Begins

VIDEO AUCTION

DVAuction
Broadcasting Real-Time Auctions

Video Sale format. Cattle will be displayed outside the sale facility for live viewing. Sale broadcast on DVAuction.com. See page 20 for more information.

VIDEOS

Videos provided by Bradley J Hook.

TERMS AND CONDITIONS

Cash, personal or company check accepted unless prior arrangements have been made. All purchases are to be settled at the conclusion of the sale.

EPDS

All EPDs are the most current BOLT at the time of printing by IGS and the American Simmental Association.

SEMEN AND INTEREST

We will retain 1/2 semen interest on bulls selling under \$20,000 bid and 1/3 semen interest on bulls with a \$20,000 bid or higher.



Iron Creek Cattle Co.



Harlan Cattle Co.



Drake Simmental



Drake Cattle Company

DRAKE SIMMENTAL

Larry and Carol Drake
Mason 641.895.5735
Larry 641.895.9422

IRON CREEK CATTLE CO.

Flint 563.580.1053

DRAKE CATTLE COMPANY

Denny and Cara Drake
Denny 641.658.2288

HARLAN CATTLE CO.

Mason and Sara Harlan
Mason 641.895.5735

ALLIED
GENETIC RESOURCES

Marty Ropp 406-581-7835
Corey Wilkins 256-590-2487
Jared Murnin 406-321-1542
www.alliedgeneticresources.com

Improved Buying Confidence with Greater Genomic **ASSURANCE**

Access to more and better information has always been key to making wise decisions. The evolution and improvement of genetic evaluation tools too has given us an ever-clearer picture of the true genetic makeup of cattle and thus a better view of the value proposition. RightMate, powered by Top Genomics LLC is taking the evaluation of genetics and genomics one giant step further. By combining specific genomic information with the long-proven value of EPDs, this new advancement in technology improves our depth and precision when evaluating the actual ability to transmit value and profit.

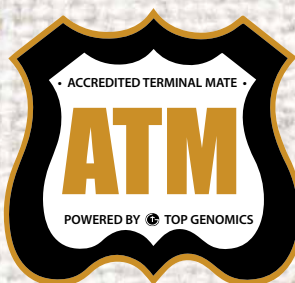
The 3 Accreditation Logos below are designed to simplify bull selection and improve buyer confidence by more accurately describing the genetics offered and by reducing risk. What this means to you as a customer is a much greater assurance that you are getting both what you want and need from the genetics you purchase. What it means to your seedstock provider is access to RightMate technology that simply sets them apart from the rest of the industry.



ACCREDITED GENOMIC PLUS – For the majority of producers who simply need consistent and balanced genetic improvement, without genomic setbacks, G+ Accredited bulls should be on your list for premium purchase. These sires will absolutely move you forward for both cost reduction and income producing traits and substantially reduce risk when compared to all other evaluation programs. It's simple, the right genes are in these bulls to help secure a profitable future and they have great EPDs to match!



ACCREDITED CALVING EASE – Simply find bulls with the ACE logo for third party Accredited, secure Calving Ease bulls. Though we have had tools in the past to assist in choosing heifer bulls, we've never had one nearly this effective. The reduced risk that comes with this genomic certification will simply make your decisions easier and your heifer calving season more successful. Purchase special purpose ACE bulls with confidence. They will deliver consistent and predictable calving ease.



ACCREDITED TERMINAL MATE – Just like an ATM machine makes it simpler to access your cash, the ATM Logo highlights bulls accredited to generate extra cash income as soon as your next calf crop! These bulls are meant specifically to use only on mature cows and for the purpose of adding performance, pay weight and end product value to market.

A Note from the Sale Manager



We are eagerly anticipating Drake Simmental Bull & Female Sale. What a set of cattle Larry, Flint, Denny and Mason have produced for your appraisal on the 4th Friday in January. The Drake family brings a unique perspective to the seedstock business, and the family has been successfully producing livestock for over 100 years in southern Iowa. To withstand the test of time, the Drake family has always been one to push the envelope for change, and the operation's adaptability has allowed the Drakes to flourish in the beef business. Once known as an operation to dominate the showring and produce numerous champions across the country, the Drakes shifted their focus to supplying the very best genetics to the commercial cowman. The cowherd blends a wonderful phenotype that the Drake's stockman eye has always been know for with some of the best figured cattle in the business. The use of technology from the genomic side of the business, along with good practical cow sense, was the focus in every mating this stout offering has to offer.

The program has relentlessly pursued the very best genetics in the beef business and is evident in the sire group selection available on sale day. The exciting new sires like Five Star Jackson and TJ War Paint will no doubt provide some new blood for old customers. Likewise, if you are in search of predictability, the Eagles are the MOST predictable and most used sire in the Simmental breed. The pursuit of great genetic selection has not stopped at sires as Iron Creek has assembled one of the very best and most high-powered donor batteries this country has to offer. The pursuit of genetic balance and phenotype is achieved at the highest degree with the great offering of embryo calves Iron Creek will have on display.

Finally, the Drake and Harlan families are some of the most pleasant to conduct business with. For commercial customers looking for genetics and service, the Drake program will absolutely check both boxes. If we can be of any assistance, please do not hesitate to reach out.

Sincerely,
Marty Ropp, Corey Wilkins and Jared Murnin

Drake and Iron Creek Bull Guarantee

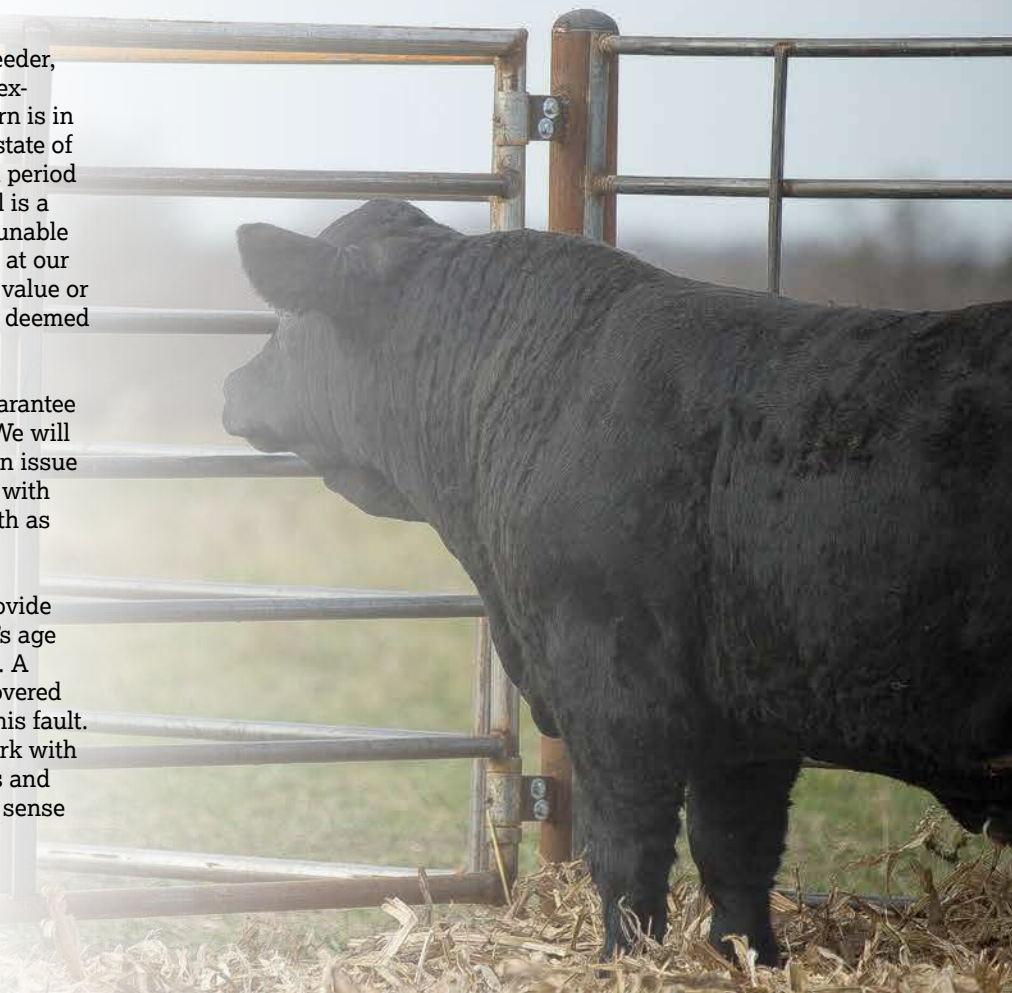
We guarantee every bull purchased in this sale to be a breeder (defined as the ability to settle healthy cows by the time the bull is 18 months of age) with the exception of:

- Bull calves sold at side of dam;
- Injury or disease occurring to the animal after time of sale;
- Negligence or willful misconduct on the part of the purchaser; or
- Bulls shown competitively after sale.

In the event an animal is claimed to be a non-breeder, the animal may be returned to us, at the buyer's expense, if in good physical condition and the return is in compliance with the health requirements of the state of Iowa. We shall be entitled to a six (6) month trial period following the return in which to prove the animal is a breeder. If at the end of such six months we are unable to establish that the animal is a breeder, we will, at our option, replace the animal with another of equal value or refund the purchase price. Either option shall be deemed full satisfaction and settlement.

All of the legal jargon aside, we view the bull guarantee as a good faith neighbor's agreement with you. We will act in good faith to determine if there was or is an issue with the bull and if there is we will make it right with you. In exchange we ask that you act in good faith as well.

Please manage the bulls with common sense-provide sufficient feed and shelter, keep in mind the bull's age when turning him out and monitor his condition. A young bull turned out with 50 cows in a snow covered pasture eventually won't breed cows-but it isn't his fault. We appreciate your business and will always work with you to do what is right. Please also work with us and most importantly care for the bulls in a common sense way. Thank you.





IRON CREEK WORTH THE WAIT1035K Sells as Lot 1.

LOT 1 **IRON CREEK WORTH THE WAIT1035K** ♂GGP
 Homo Black II Homo Polled PB SM
 7/27/2022 1035K (ET) ASA# 4224735

HOOK'S BLACK HAWK 50B HOOK'S BEACON 56B
HOOK'S EAGLE 6E KBHR MATRON OF HONOR F202
 HOOK'S CRYSTAL 1C BAR CK MS X38 106Z

	CE	BW	WW	YW	ADG	MCE	MILK	MWW	STAY
EPD	13.2	1.5	106.3	161.9	0.35	6.7	26.1	79.0	17.0
Rank	25	55	1	1	4	35	30	2	35
	DOC	CW	YG	MARB	BF	REA	API	TI	
EPD	18.0	66.6	-0.32	0.65	-0.039	1.42	176.4	109.7	
Rank	3	1	80	3	99	1	3	1	
	BW				ADJ. WW				

Full brothers to Iron Creek Anthem. These two bulls are the result of one of our most popular, powerful and consistent matings. Anthem was purchased by Matt Beach and has become a popular AI sire. Full brothers have averaged right at \$10,000 in the past three Drake and Iron Creek sales.

The numbers just don't get much better than those presented by Worth the Wait- top 1% growth and carcass traits with excellent calving ease and maternal traits. A can't miss herd improver as confirmed by his G+ and ATM designations by the RightChoice analysis.

Matron is the most proven producer of elite genetics in the Iron Creek herd. At six years of age she retains elite, balanced EPDs in the top 15% for calving ease, 20% for gain, 2% maternal calving ease, 10% milk and stay, 3% carcass weight, 1% marbling, rib-eye area and All Purposed Index and 2% Terminal Index. Year after year, mating after mating, she produces elite genomic improvers. And she has the intangibles-excellent mothering instinct and a docile nature. We have retained every Matron daughter in our herd. Purchasing her sons will add this breed leading genetics to your herd.



HOOK'S EAGLE 6E Sire of Lots 1, 2.



KBHR MATRON OF HONOR F202 Dam of Lots 1, 2.



IRON CREEK BEST MAN 1040K Sells as Lot 2.

LOT 2 **IRON CREEK BEST MAN 1040K** **GGP**
 Homo Black II Homo Polled PB SM
 8/7/2022 1040K (ET) ASA# 4224742

HOOK'S BLACK HAWK 50B HOOK'S BEACON 56B
HOOK'S EAGLE 6E KBHR MATRON OF HONOR F202
 HOOK'S CRYSTAL 1C BAR CK MS X38 106Z

	CE	BW	WW	YW	ADG	MCE	MILK	MWW	STAY
EPD	11.4	1.1	103.0	160.9	0.36	5.9	26.1	77.4	17.0
Rank	50	45	1	1	3	50	30	3	35
	DOC	CW	YG	MARB	BF	REA	API	TI	
EPD	18.2	68.7	-0.43	0.67	-0.066	1.60	176.1	109.4	
Rank	3	1	35	3	70	1	3	1	
	BW				ADJ. WW				

Full brothers to Iron Creek Anthem. These two bulls are the result of one of our most popular, powerful and consistent matings. Anthem was purchased by Matt Beach and has become a popular AI sire. Full brothers have averaged right at \$10,000 in the past three Drake and Iron Creek sales.

Best Man personifies elite balance-top 1% growth with unmatched carcass traits. Note he is in the top 3% or better for marbling, ribeye area and tenderness-all reflected in his top 1% Terminal Index. G+ and ATM under RightChoice!



Iron Creek Anthem 14J Full brother to Lots 1 & 2.

Eagle flush brothers by the matriarch Matron of Honor F202.



IRON CREEK WARRIOR 8102L Sells as Lot 3.



TJ WAR PAINT 759J Sire of Lot 3.

3	LOT		IRON CREEK WARRIOR 8102L		GGP				
	Homo Black Homo Polled		8102L (ET)		3/4 SM 1/4 AN ASA# 4237077				
1/8/2023		TJ CHIEF 460G		HOOK'S BEACON 56B					
TJ WAR PAINT 759J		TJ 2D		KBHR MATRON OF HONOR F202					
TJ 2D		BAR CK MS X38 106Z							
	CE	BW	WW	YW	ADG	MCE	MILK	MWW	STAY
EPD	15.4	-2.2	79.9	121.6	0.26	9.5	35.4	75.2	21.1
Rank	20	15	35	40	50	15	1	5	3
	DOC	CW	YG	MARB	BF	REA	API	TI	
EPD	12.7	35.3	-0.08	0.64	0.015	0.71	169.8	93.5	
Rank	45	50	90	15	99	50	5	10	
BW		ADJ. WW							
		671							

Sired by the \$70,000 War Paint, Warrior is big bodied and attractive with excellent calving ease and maternal traits. Gained 3.89 pounds per day. His genes are designed for efficiency and profitability as reflected in his G+ designation under the RighChoice analysis.



Sons of Matron of Honor F202.



IRON CREEK FRANCHISE 5284K Sells as Lot 4.

LOT 4 **IRON CREEK FRANCHISE 5284K** **GGP**

Homo Black II Homo Polled 3/4 SM 1/4 AN
 8/24/2022 5284K (ET) ASA# 4224744

CCR COWBOY CUT 5048Z HOOK'S BEACON 56B
TJ FRANCHISE 451D **KBHR MATRON OF HONOR F202**
 TJ MISS NET WORTH U11 BAR CK MS X38 106Z

	CE	BW	WW	YW	ADG	MCE	MILK	MWW	STAY
EPD	14.4	-1.5	65.8	104.8	0.24	6.9	25.5	58.2	21.2
Rank	30	25	85	75	65	50	40	70	2
	DOC	CW	YG	MARB	BF	REA	API	TI	
EPD	14.5	25.6	-0.11	0.70	0.002	0.56	166.2	85.0	
Rank	25	80	85	10	95	75	10	35	
	BW				ADJ. WW				



TJ FRANCHISE 451D Sire of Lot 4.

An attractive Franchise son with good calving ease, Stay and marbling. A fall bull that can cover a lot of cows. Assured calving ease and profitability in his genes as he is ACE and G+ under RightChoice.





IRON CREEK SWAGGER 34L Sells as Lot 5.



POSS DEADWOOD Sire of Lot 5.



NEVER SAY NEVER Full Brother to Lot 5.

LOT

5

IRON CREEK SWAGGER 34L

GGP

Homo Black II Homo Polled 1/2 SM 1/2 AN
 3/18/2023 34L (ET) ASA# 4237081

POSS MAVERICK HOOK'S BEACON 56B
POSS DEADWOOD **KBHR MATRON OF HONOR F202**
 POSS ELLUNAMERE 399 BAR CK MS X38 106Z

	CE	BW	WW	YW	ADG	MCE	MILK	MWW	STAY
EPD	14.0	0.7	94.9	152.8	0.36	9.1	28.6	76.6	15.8
Rank	35	60	4	4	10	20	15	3	35

	DOC	CW	YG	MARB	BF	REA	API	TI
EPD	15.1	74.0	-0.05	1.15	0.010	1.07	188.1	111.6
Rank	20	1	95	1	99	10	1	1

BW ADJ. WW

Swagger boasts outstanding growth, carcass and maternal traits resulting in top 1% All Purpose Index and elite top 1% Terminal Index. This bull is a phenomenal growth bull as he posted a 782 pound weaning weight AND THEN GAINED 5.33 POUNDS PER DAY TO POST A 1,635 POUND YEARLING WEIGHT! G+ and ATM under the RightChoice analysis. Pedigree, genomics, personal performance and RightChoice confirmation- this bull has potential for seedstock breeder, progressive commercial breeders and semen companies.



LOTS 5-7 Full brothers to the \$15,000 Iron Creek Never Say Never purchased in the 2023 sale by Matt Beach and All Beef. There has been strong semen interest in Never Say Never and these three bulls present breeders with an opportunity to acquire a very unique and powerful pedigree mix-the predictable excellence of Matron with the power and cutting edge genetics of the \$900,000 Poss Deadwood. Add excellence from your herd bull with semen sale potential.

Fury Road is a perfect storm of genetic excellence with nine traits in the top 2% of the entire breed including WW, YW, ADG, MWW, CW, Marbling, REA, API and TI. G+ and ATM. Adjusted weaning weight of 774 pounds, gained 4.33 pounds per day to post a yearling weight of 1,467 pounds. Pedigree, genomic excellence, confirmed for genes to enhance profitability and terminal value, outstanding personal performance and a powerful look. A seedstock bull for the most discriminating.



IRON CREEK FURY ROAD 41L Sells as Lot 6.

LOT
6

IRON CREEK FURY ROAD 41L

⚔️ **GGP**

Homo Black || Homo Polled 1/2 SM 1/2 AN
 3/15/2023 41L (ET) ASA# 4237080

POSS MAVERICK HOOK'S BEACON 56B
POSS DEADWOOD **KBHR MATRON OF HONOR F202**
 POSS ELLUNAMERE 399 BAR CK MS X38 106Z

	CE	BW	WW	YW	ADG	MCE	MILK	MWW	STAY
EPD	13.3	2.1	99.5	170.1	0.44	8.9	28.6	78.9	14.6
Rank	40	80	2	1	1	20	15	2	50
	DOC	CW	YG	MARB	BF	REA	API	TI	
EPD	15.8	82.7	-0.16	1.08	-0.020	1.28	183.0	112.1	
Rank	15	1	70	1	85	1	2	1	
		BW		ADJ. WW					
				774					

LOT
7

IRON CREEK AMERICAN KID 54L

⚔️ **GGP**

Homo Black || Homo Polled 1/2 SM 1/2 AN
 1/17/2023 54L (ET) ASA# 4237079

POSS MAVERICK HOOK'S BEACON 56B
POSS DEADWOOD **KBHR MATRON OF HONOR F202**
 POSS ELLUNAMERE 399 BAR CK MS X38 106Z

	CE	BW	WW	YW	ADG	MCE	MILK	MWW	STAY
EPD	13.7	1.0	90.3	149.3	0.37	8.9	28.6	74.2	13.8
Rank	40	65	10	5	4	20	15	10	60
	DOC	CW	YG	MARB	BF	REA	API	TI	
EPD	14.1	80.1	-0.03	1.09	-0.006	0.96	178.7	107.1	
Rank	30	1	95	1	90	15	3	1	
		BW		ADJ. WW					
				661					



IRON CREEK AMERICAN KID 54L Sells as Lot 7.

American Kid is a stout, attractive genetic improver with ten traits in the top 15% of the breed, G+ and ATM by RightChoice . Look at his carcass traits! He will add pounds and dollars to your calf crop.



IRON CREEK FORGE 162L Sells as Lot 8.



CCR MS 6175 GUARD 1003J Dam of Lot 8.

LOT

8

IRON CREEK FORGE 162L

♂GGP

Homo Black || Homo Polled
1/29/2023

POSS MAVERICK
POSS DEADWOOD
POSS ELLUNAMERE 399

3/8 SM 5/8 AN
ASA# 4237078

162L

CLRS GUARDIAN 317G
CCR MS 6175 GUARD 1003J
CCR MS 2407 WD RNG 6175D

	CE	BW	WW	YW	ADG	MCE	MILK	MWW	STAY
EPD	16.8	-1.7	94.6	155.6	0.38	9.7	25.5	73.4	17.2
Rank	10	20	4	3	3	15	40	10	25

	DOC	CW	YG	MARB	BF	REA	API	TI
EPD	15.8	70.3	0.12	0.95	0.049	0.81	182.5	107.0
Rank	15	1	99	2	99	30	2	1

BW

799

ADJ. WW

Forge is the result of crossing an amazingly stout high selling Guardian heifer from Cow Camp Ranch with the power producing, \$900,000 Poss Deadwood. He is G+ AND ACE! When is the last time you saw an assured calving ease bull with top 2-4% growth traits, a top 2% API and 1% TI? Adjusted weaning weight of 799 pounds, gained 4.11 pounds per day to post a yearling weight of 1,448! Commercial cattlemen and women, this bull will add convenience and pounds (the good kind) to your life.



I want to keep one of these bulls so badly- their genetic predictability, over all mass in easy calving , attractive packages will move your herd forward in all respects. Past full brothers have averaged over \$8,000-buy with extreme confidence.

Front Row is the front pasture kind-balanced excellence in his EPDS and attractive and massive in his phenotype. G+.



HOOK'S EAGLE 6E Sire of Lots 9, 10.



IRON CREEK FRONT ROW B24K Sells as Lot 9.

LOT 9 **IRON CREEK FRONT ROW B24K** **GGP**

Homo Black Homo Polled		3/8 SM 5/8 AN
8/2/2022	B24K (ET)	ASA# 4224739

HOOK'S BLACK HAWK 50B BASIN PAYWEIGHT 1682
HOOK'S EAGLE 6E **MONTANA BLACKBIRD 7250**
 HOOK'S CRYSTAL 1C GALAXY BLACKBIRD 2102

	CE	BW	WW	YW	ADG	MCE	MILK	MWW	STAY
EPD	16.5	-3.4	89.0	145.9	0.36	7.6	25.5	70.1	16.0
Rank	15	10	10	10	10	40	40	15	35
	DOC	CW	YG	MARB	BF	REA	API	TI	
EPD	13.3	46.2	-0.04	0.57	0.039	0.90	160.2	96.8	
Rank	40	20	95	20	99	20	15	5	
	BW				ADJ. WW				



LOT 10 **IRON CREEK INDUSTRY 1056K** **GGP**

Homo Black Homo Polled		3/8 SM 5/8 AN
8/11/2022	1056K (ET)	ASA# 4224743

HOOK'S BLACK HAWK 50B BASIN PAYWEIGHT 1682
HOOK'S EAGLE 6E **MONTANA BLACKBIRD 7250**
 HOOK'S CRYSTAL 1C GALAXY BLACKBIRD 2102

	CE	BW	WW	YW	ADG	MCE	MILK	MWW	STAY
EPD	14.4	-2.1	89.5	144.4	0.34	6.6	25.5	70.3	20.4
Rank	30	15	10	10	10	55	40	15	4
	DOC	CW	YG	MARB	BF	REA	API	TI	
EPD	16.7	50.3	-0.02	0.67	0.030	0.84	169.7	97.8	
Rank	10	15	95	15	99	30	5	4	
	BW				ADJ. WW				



IRON CREEK INDUSTRY 1056K Sells as Lot 10.

Industry seemed a fitting name for this beast. Top 15% in eleven different traits with a top 5% API and 4% TI. Elite, balanced, powerful and predictable.



MONTANA BLACKBIRD 7250 Dam of Lots 9, 10.



IRON CREEK STILL WATER 609K Sells as Lot 11.

11	LOT	IRON CREEK STILL WATER 609K	GGP
	Homo Black II Homo Polled		3/8 SM 5/8 AN
7/29/2022		609K (ET)	ASA# 4224736

POSS MAVERICK
POSS DEADWOOD
 POSS ELLUNAMERE 399

GW-WBF SUBSTANCE 820Y
HOOK'S CRYSTAL 1C
 HOOK'S UNDERESTIMATED 6U

	CE	BW	WW	YW	ADG	MCE	MILK	MWW	STAY
EPD	14.0	1.9	95.6	158.1	0.39	7.7	23.7	71.3	15.3
Rank	35	80	4	2	2	35	55	15	45
	DOC	CW	YG	MARB	BF	REA	API	TI	
EPD	15.3	68.3	-0.03	0.93	0.000	0.86	169.3	103.3	
Rank	20	1	95	2	95	25	10	1	
	BW				ADJ. WW				

Perhaps the most intriguing pedigree in the Iron Creek offering. We are honored to have owned a portion of Hook's Eagle, the most popular and widely used bull in the Simmental breed for several years. We crossed Eagle's mother, Crystal, with the \$900,000 Deadwood. Still Waters run deep and outstanding genetics run deep in this bull as he combines the genetics that have revolutionized both the Simmental and Angus breeds. Outstanding growth and carcass traits with reasonable calving ease and maternal traits. G+ and ATM-predictable excellence.



POSS DEADWOOD Sire of Lot 11.



HOOK'S CRYSTAL 1C Dam of Lots 11, 12.



IRON CREEK GOLD RUSH 613K Sells as Lot 12.

LOT 12 **IRON CREEK GOLD RUSH 613K** **GGP**

Homo Black II Homo Polled PB SM
 7/29/2022 613K (ET) ASA# 4224737

HOOK'S BEACON 56B GW-WBF SUBSTANCE 820Y
CLRS GUARDIAN 317G HOOK'S CRYSTAL 1C
 CLRS ALWAYS XCELLENT HOOK'S UNDERESTIMATED 6U

	CE	BW	WW	YW	ADG	MCE	MILK	MWW	STAY
EPD	11.1	-0.4	93.8	140.1	0.29	6.5	28.1	74.8	20.6
Rank	55	20	10	10	20	40	15	5	5
	DOC	CW	YG	MARB	BF	REA	API	TI	
EPD	6.7	55.0	-0.30	0.96	-0.049	1.13	195.7	111.8	
Rank	95	2	90	1	95	10	1	1	
	BW				ADJ. WW				



CLRS GUARDIAN 317G Sire of Lot 12.

Another interesting cross-Eagle's mother, Crystal, crossed with the \$100,000 Guardian bull. This purebred Simmental boasts EPDs in the top 20% for 13 different traits and indexes including elite top 1% API and TI. G+ and ATM under the RighChoice analysis. Every indicator tells us he will be a genetic masterpiece.



Sons of Crystal 1C.

Outstanding bull by the \$65,000 Five Star Jackson. Combines eye appeal, performance, and EPDs in one great package. W.W 799 lbs, he gained 4.55 lbs/day. Projected Y.W of 1527 lbs. Excellent numbers for CE, WW, YW, ADG, MCE, Milk, Doc., and Marbling. He is in the top 10% for API and TI.



DRAKE BULL G364L Sells as Lot 13.

LOT 13 **DRAKE BULL G364L**

Hetero Black II Homo Polled PB SM
 3/22/2023 G364L ASA# 4260363

HOOK'S FULL FIGURES 11F TJ PLATTE RIVER 370D
FIVE STAR JACKSON J10 **DRAKE MISS D364G**
 KBHR F316 DRAKE MISS Z364D

	CE	BW	WW	YW	ADG	MCE	MILK	MWW	STAY
EPD	14.6	0.5	86.4	133.7	0.30	8.6	26.8	69.8	16.3
Rank	15	35	20	20	20	15	25	20	45

	DOC	CW	YG	MARB	BF	REA	API	TI
EPD	18.5	41.0	-0.17	0.57	-0.040	0.62	165.4	96.4
Rank	2	15	99	5	99	95	10	10

BW **81**
ADJ. WW **799**



LOT 14 **DRAKE BULL G65L**

Homo Black II Homo Polled PB SM
 3/9/2023 G65L ASA# 4260366

HOOK'S FULL FIGURES 11F KOCH BIG TIMBER 685D
FIVE STAR JACKSON J10 **DRAKE 65G**
 KBHR F316 TJ 108D

	CE	BW	WW	YW	ADG	MCE	MILK	MWW	STAY
EPD	18.4	-2.6	84.0	123.1	0.24	11.3	26.6	68.4	13.7
Rank	2	4	25	35	55	1	25	20	70

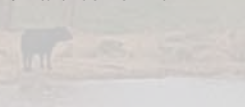
	DOC	CW	YG	MARB	BF	REA	API	TI
EPD	11.2	33.8	-0.29	0.37	-0.022	1.05	158.6	94.4
Rank	55	35	90	20	99	20	15	10

BW **75**
ADJ. WW **743**



DRAKE BULL G65L Sells as Lot 14.

A unique bull we have loved since day one! If ever a bull was born to sire females that will convert grass to beef this is him! Sired by Five Star Jackson, he mirrors many of Jackson's outstanding traits. 65L's Dam and Grandam are ideal cows that milk well with great udders, are sound with excellent feet and legs. They breed back quickly and are problem free. They are low maintenance cows that don't give up any performance as evident by 65L's WW of 743 lbs. And YW of 1351; done without any creep for the calves or grain for cows. In 2023 this was done in a hot, dry summer with short grass. 65L is a massive bull with a huge top, wide from behind, deep-deep body and a great view from the side. His enhanced EPDs show him with CE in the top 2%, BW top 4%, MCE top 1%, Milk top 25%, MWW top 20%. That's maternal power! Let's not forget carcass. His marb. and REA are both top 20%, API top 15%, and TI top 10%. We would like to collect 200 units of semen from him to use in our cow herd.



Growth, growth, growth. 558 E is out of an absolutely outstanding female we purchased from Triangle J Ranch several years ago. Year after year she produces outstanding bulls and females and this bull is no exception. Elite, balanced EPD, great performance and a great look. Adjusted weaning weight of 743 pounds and then GAINED 5.2 POUNDS PER DAY TO POST A 1,579 POUND YEARLING WEIGHT. We are as excited by the Jackson calves as any we have had in years-a game changer in terms of combining performance and looks. G+.



FIVE STAR JACKSON J10 Sire of Lots 13-16.



IRON CREEK 558E Sells as Lot 15.

LOT 15 **IRON CREEK 558E** **GGP**

Black II Homo Polled 5/8 SM 3/8 AN
 3/12/2023 180L ASA# 4260391

HOOK'S FULL FIGURES 11F TJ Z54
FIVE STAR JACKSON J10 TJ MISS 558E
 KBHR F316 TJ 75C

	CE	BW	WW	YW	ADG	MCE	MILK	MWW	STAY
EPD	14.0	-0.8	87.7	132.0	0.28	10.4	33.3	77.0	15.4
Rank	35	30	15	25	40	10	3	3	40
	DOC	CW	YG	MARB	BF	REA	API	TI	
EPD	13.6	63.7	-0.16	0.40	-0.031	0.95	144.5	90.6	
Rank	35	2	70	45	60	15	30	20	
	BW				ADJ. WW				
	78				743				



LOT 16 **IRON CREEK H29L** **GGP**

Homo Black II Homo Polled 1/2 SM 1/2 AN
 2/17/2023 H29L ASA# 4260386

HOOK'S FULL FIGURES 11F SYDGEN ENHANCE
FIVE STAR JACKSON J10 IRON CREEK BLASTER D29H
 KBHR F316 RB LADY BLASTER 412-7532

	CE	BW	WW	YW	ADG	MCE	MILK	MWW	STAY
EPD	13.2	-0.9	94.6	161.8	0.42	8.3	32.5	80.6	12.8
Rank	45	30	4	1	1	30	4	1	70
	DOC	CW	YG	MARB	BF	REA	API	TI	
EPD	17.2	75.4	0.01	0.81	-0.004	0.78	166.4	105.3	
Rank	10	1	99	5	90	35	10	1	
	BW				ADJ. WW				
	78				745				



IRON CREEK H29L Sells as Lot 16.

What a half blood. His grandam on the cow side is a \$40,000 Angus we purchased from Riley Bros. Angus and he is sired by the exciting Jackson. Do you understand our excitement about the Jackson bull? This bull posts 8 traits in the top 5% of the breed, 10 in the top 10% and is G+ under RightChoice. Posted an adjusted weaning weight of 745 pounds, gained 4.83 pounds per day to yield a 1,509 pound yearling weight.



RB LADY BLASTER 412-7532 Grandam of Lot 16.

FIVE STAR JACKSON J10

The \$65,000 "next step" in genetic advancement-outstanding phenotype combined with genomic excellence. Jackson's first calf crop has been everything we hoped for and more. Beautify, feminine females and powerful, fast growing bulls. Semen available from owners or ORlgen. Owned with Five Star Ranch.



FIVE STAR JACKSON J10 Sire of Lots 13-31.



DRAKE BULL B404L Sells as Lot 17.

LOT
17

DRAKE BULL B404L

Hetero Black // Homo Polled
3/10/2023 B404L ASA# 4260356

GGP

PB SM

HOOK'S FULL FIGURES 11F DRAKE BULLY BOY
FIVE STAR JACKSON J10 **DRAKE MISS Y404B**
 KBHR F316 DRAKE MISS W404Y

	CE	BW	WW	YW	ADG	MCE	MILK	MWW	STAY		
EPD	11.9	0.5	71.2	99.3	0.18	6.6	23.9	59.3	17.2		
Rank	45	35	75	85	90	40	45	60	30		
	DOC	CW	YG	MARB	BF	REA	API	TI			
EPD	8.2	33.7	-0.19	0.59	-0.038	0.63	156.7	86.5			
Rank	85	35	99	4	99	95	15	25			
		BW							ADJ. WW		
		84							658		

Gained 4.22 lbs/day with a 1334 projected YW. He has a 157 API which puts him in the top 15%.



HARLAN BULL G76L Sells as Lot 18.

LOT
18

HARLAN BULL G76L

Hetero Black // Homo Polled
2/2/2023 G76L ASA# 4259731

GGP

PB SM

HOOK'S FULL FIGURES 11F DRAKE BULL B99D
FIVE STAR JACKSON J10 **HARLAN MISS D76G**
 KBHR F316 DRAKE MISS U76D

	CE	BW	WW	YW	ADG	MCE	MILK	MWW	STAY		
EPD	18.5	-4.4	64.2	97.5	0.21	10.6	24.5	56.7	15.5		
Rank	2	1	95	90	75	3	40	75	50		
	DOC	CW	YG	MARB	BF	REA	API	TI			
EPD	13.7	20.9	-0.27	0.40	-0.045	0.66	159.4	85.1			
Rank	25	80	95	15	95	95	15	30			
		BW							ADJ. WW		
		61							568		

This purebred Five Star Jackson Son is a smooth made bull that should be a heifer bull. He also gained 4.32lbs a day bringing him to a 1255lb yearling weight.



LOT 19 HARLAN BULL A106L **GGP**

Homo Black II Homo Polled PB SM
 2/25/2023 A106L ASA# 4259735

HOOK'S FULL FIGURES 11F SS SLEEP TIGHT 69U
FIVE STAR JACKSON J10 **HARLAN HIDDEN TRUTH**
 KBHR F316 DRAKE MISS 106U

	CE	BW	WW	YW	ADG	MCE	MILK	MWW	STAY
EPD	15.7	-1.9	72.1	111.7	0.25	7.6	23.0	58.9	15.8
Rank	10	10	75	60	45	25	50	65	50
	DOC	CW	YG	MARB	BF	REA	API	TI	
EPD	12.8	23.5	-0.20	0.49	-0.023	0.63	160.1	88.6	
Rank	35	70	99	10	99	95	15	20	
BW		ADJ. WW							
74		653							



HARLAN BULL A106L Sells as Lot 19.

This purebred Five Star Jackson son is one of those that you always give a second look to in the lot. He is in the top 10% for both calving ease and birth weight as well as marbling. He had an ADG of 4.57 getting him to a 1415lb yearling weight.



LOT 20 DRAKE BULL J107L **GGP**

Hetero Black II Homo Polled PB SM
 3/10/2023 E107L ASA# 4260344

HOOK'S FULL FIGURES 11F W/C LOCK DOWN 206Z
FIVE STAR JACKSON J10 **DRAKE MISS W107E**
 KBHR F316 DRAKE MISS 107W

	CE	BW	WW	YW	ADG	MCE	MILK	MWW	STAY
EPD	14.0	-0.4	88.2	136.8	0.30	8.9	23.5	67.4	13.9
Rank	20	20	15	15	20	10	50	25	70
	DOC	CW	YG	MARB	BF	REA	API	TI	
EPD	14.7	33.0	-0.26	0.59	-0.045	0.77	164.0	99.2	
Rank	20	35	95	4	95	75	10	4	
BW		ADJ. WW							
81		738							



DRAKE BULL J107L Sells as Lot 20.

Top 20% for CE and BW, Top 15% for both WW and YW. He has a great API of 164, top 10% and top 4% TI. His YW was 738 lbs with an ADG of 4.5 lbs and projected YW of 1458 lbs.



LOT 21 DRAKE BULL H49L **GGP**

Hetero Black II Homo Polled PB SM
 2/24/2023 H49L ASA# 4260365

HOOK'S FULL FIGURES 11F DRAKE HIGH RIVER
FIVE STAR JACKSON J10 **DRAKE MISS A49H**
 KBHR F316 HL MS SUPERMAN A49

	CE	BW	WW	YW	ADG	MCE	MILK	MWW	STAY
EPD	18.1	-2.4	69.5	101.6	0.20	11.0	28.1	62.6	17.0
Rank	2	5	85	80	80	2	15	45	35
	DOC	CW	YG	MARB	BF	REA	API	TI	
EPD	15.5	46.0	-0.31	0.32	-0.056	1.00	155.5	84.2	
Rank	15	10	85	25	85	25	15	35	
BW		ADJ. WW							
74		720							



DRAKE BULL H49L Sells as Lot 21.

This guy should be a calving ease "deluxe" with CE in the top 2%, BW in the top 5%, and API in the top 15%.



DRAKE BULL H792L Sells as Lot 22.

LOT 22 **DRAKE BULL H792L**

Homo Black // Homo Polled PB SM
 2/19/2023 H792L ASA# 4260367

HOOK'S FULL FIGURES 11F TJ PLATTE RIVER 370D
FIVE STAR JACKSON J10 **DRAKE MISS B792H**
 KBHR F316 DRAKE ONYX

	CE	BW	WW	YW	ADG	MCE	MILK	MWW	STAY
EPD	13.8	-0.6	85.8	128.7	0.27	8.5	25.7	68.4	18.6
Rank	20	20	20	25	35	15	30	20	20

	DOC	CW	YG	MARB	BF	REA	API	TI
EPD	18.5	49.9	-0.30	0.37	-0.064	0.97	159.8	92.6
Rank	2	5	90	20	70	30	15	15

BW **ADJ. WW**
84 **766**

A powerful Jackson son with WW of 766. He gained 4.56 lbs/day and has a YW of 1490. Deep, wide, and beautiful. Top EPDs across the board.



DRAKE DIRTY JACK L15 Sells as Lot 23.

LOT 23 **DRAKE DIRTY JACK L15**

Hetero Black // Homo Polled PB SM
 2/6/2023 L15 ASA# 4268578

HOOK'S FULL FIGURES 11F DRAKE DOWN N DIRTY
FIVE STAR JACKSON J10 **DRAKE DIRTY LADY J58**
 KBHR F316 DRAKE COMMAND LADY B58

	CE	BW	WW	YW	ADG	MCE	MILK	MWW	STAY
EPD	14.4	0.3	78.5	111.7	0.21	9.5	24.2	63.2	16.5
Rank	15	30	45	60	75	10	40	45	40

	DOC	CW	YG	MARB	BF	REA	API	TI
EPD	15.4	36.3	-0.35	0.45	-0.079	0.84	155.6	89.0
Rank	15	25	70	15	50	60	15	20

BW **ADJ. WW**
83 **751**

You will love the thickness and balance of this attractive Jackson son. He posted a 751 pound weaning weight, gained 4.1 pounds per day on test, with an adjusted yearling weight of 1371 pounds. His personal performance, looks And top 15% calving ease EPD make him a great all-around choice. Homozygous polled.



DRAKE BULL F33L Sells as Lot 24.

LOT 24 **DRAKE BULL F33L**

Hetero Black // Homo Polled PB SM
 3/20/2023 F33L ASA# 4260372

HOOK'S FULL FIGURES 11F TJ PLATTE RIVER 370D
FIVE STAR JACKSON J10 **DRAKE MISS X33F**
 KBHR F316 JS DOLLY 33X

	CE	BW	WW	YW	ADG	MCE	MILK	MWW	STAY
EPD	14.1	-0.6	75.2	112.4	0.23	8.7	26.6	64.0	16.9
Rank	20	20	60	60	60	15	25	40	35

	DOC	CW	YG	MARB	BF	REA	API	TI
EPD	14.7	21.2	-0.22	0.50	-0.023	0.67	159.2	89.1
Rank	20	80	99	10	99	90	15	20

BW **ADJ. WW**
80 **713**

Attractive Jackson son coming from one of our best cow family's. Top 20% in both CE and BW. Top 15% API with a WW of 713 lbs.



LOT 25 **IRON CREEK A17L** **GGP**
 Hetero Black II Homo Polled PB SM
 3/15/2023 A17L ASA# 4260385

HOOK'S FULL FIGURES 11F HOOK'S SHEAR FORCE 38K
FIVE STAR JACKSON J10 **DRAKE MISS Y17A**
 KBHR F316 DRAKE DEW PROCESS

	CE	BW	WW	YW	ADG	MCE	MILK	MWW	STAY
EPD	16.0	-1.6	81.6	117.1	0.22	9.5	29.1	69.7	16.0
Rank	10	10	35	45	70	10	10	20	45
	DOC	CW	YG	MARB	BF	REA	API	TI	
EPD	13.8	31.1	-0.36	0.31	-0.042	1.06	153.7	90.4	
Rank	25	45	65	25	95	20	20	15	
BW					ADJ. WW				
76					770				

A Jackson son from an outstanding coming 15 year old cow that just keeps producing. If you want longevity, calving ease, maternal traits and strong carcass traits, please give this bull a look. A17L posted a 770 pound weaning weight, gained 4.11 pounds per day and has a 1,428 pound yearling weight. A bull that checks a lot of boxes. G+



IRON CREEK A17L Sells as Lot 25.

LOT 26 **IRON CREEK G685L** **GGP**
 Hetero Black II Homo Polled 3/4 SM 1/4 AN
 3/10/2023 G658L ASA# 4260388

HOOK'S FULL FIGURES 11F HOOK'S EAGLE 6E
FIVE STAR JACKSON J10 **TJ 658G**
 KBHR F316 TJ 128C

	CE	BW	WW	YW	ADG	MCE	MILK	MWW	STAY
EPD	14.8	-1.4	88.5	135.0	0.29	8.1	23.1	67.2	16.4
Rank	25	25	15	20	35	30	60	25	30
	DOC	CW	YG	MARB	BF	REA	API	TI	
EPD	15.3	35.3	-0.36	0.45	-0.063	0.98	153.4	93.3	
Rank	20	50	15	35	20	15	20	10	
BW					ADJ. WW				
74					688				

Predictable excellence created by crossing the exciting new Five Star Jackson with a big bodied, good producing Eagle daughter. 15 traits and indexes in the top 35% of the breed-excellent calving ease, growth, maternal and carcass. Gained 3.67 pounds per day.



IRON CREEK G685L Sells as Lot 26.

LOT 27 **DRAKE DIAMOND JACK** **GGP**
 Homo Black II Homo Polled PB SM
 3/5/2023 L7 ASA# 4268573

HOOK'S FULL FIGURES 11F W/C EXECUTIVE ORDER 8543B
FIVE STAR JACKSON J10 **DRAKE DIAMOND**
 KBHR F316 DRAKE MISS T12

	CE	BW	WW	YW	ADG	MCE	MILK	MWW	STAY
EPD	15.0	1.5	94.3	142.9	0.30	8.9	23.3	70.2	7.0
Rank	15	55	10	10	20	10	50	15	99
	DOC	CW	YG	MARB	BF	REA	API	TI	
EPD	14.9	46.6	-0.25	0.41	-0.043	0.92	140.0	96.0	
Rank	15	10	95	15	95	40	35	10	
BW					ADJ. WW				
76					726				

A deep sided, sound moving, structurally correct bull with an overwhelming attractive phenotype. Posting a 751 pound weaning weight, gained 5.11 pound per day on test with a 1498 pound adjusted yearling weight. Backed up with a top 15% calving ease, top 5%, weaning weight, and top 10% yearling wt. EPD's. His numbers match his personal performance for a great set of stats and very impressive bull. Homozygous polled, homozygous black.



DRAKE DIAMOND JACK Sells as Lot 27.



DRAKE JACKSON L20 Sells as Lot 28.

LOT 28		DRAKE JACKSON L20				GGP			
Hetero Black Homo Polled		3/15/2023				L20			
PB SM		ASA# 4268574							
HOOK'S FULL FIGURES 11F		TJ PLATTE RIVER 370D							
FIVE STAR JACKSON J10		DRAKE RIVER GIRL							
KBHR F316		DRAKE SWEET TIMES							
	CE	BW	WW	YW	ADG	MCE	MILK	MWW	STAY
EPD	14.5	0.2	81.8	120.9	0.24	8.8	23.5	64.1	16.3
Rank	15	30	35	40	55	15	50	40	45
	DOC	CW	YG	MARB	BF	REA	API	TI	
EPD	12.7	31.8	-0.30	0.37	-0.036	0.94	152.7	88.9	
Rank	35	40	90	20	99	40	20	20	
	BW				ADJ. WW				
	81				708				

A little younger bull that we think a lot of. From his disposition to his overall balance, and look, he is stellar. 708 pound weaning wait, gained 4.1 pounds per day on test, posting a 1364 pound adjusted yearling wt. Has a very well balanced EPD profile with top 15% calving ease, making him a great choice for heifers. Homozygous polled.



DVAuction

Broadcasting Real-Time Auctions

WATCH AND BID ONLINE FOR FREE

- Visit www.DVAuction.com and Register. It's as easy as 1, 2, 3...
1. Create an account at www.DVAuction.com under the "create new account" tab.
 2. Apply for bidding by clicking "apply for bidding" in the upper left corner of your screen, at least 24 hours prior to the auction.
 3. Tune into the sale and make your purchases.

www.DVAuction.com

support@dvauction.com
402-316-5460 || 402-474-5557

LOT 29 **DRAKE BULL G765L** **GGP**

Red II Homo Polled 3/4 SM 1/4 AN
 3/28/2023 G765L ASA# 4260345

HOOK'S FULL FIGURES 11F CCR WIDE RANGE 9005A
FIVE STAR JACKSON J10 **DRAKE MISS X765G**
 KBHR F316 DRAKE MISS L765X

CE	BW	WW	YW	ADG	MCE	MILK	MWW	STAY
14.6	-1.2	79.7	129.1	0.31	9.2	21.2	60.8	15.6
30	25	35	25	25	20	75	55	40

DOC	CW	YG	MARB	BF	REA	API	TI
14.0	35.8	-0.32	0.43	-0.031	1.10	147.4	87.2
30	45	25	40	60	5	25	25

BW 75 ADJ. WW 718



DRAKE BULL G765L Sells as Lot 29.

An outstanding red bull! About as massive from front to tail as you can make one. Excellent balanced numbers with most in the top 20%-35%. He had a WW of 718, ADG of 4.22 lbs, and projected YW of 1394 lbs. If you like red you will like this stud!



LOT 30 **DRAKE BULL F185L** **GGP**

Red II Hetero Polled 3/4 SM 5/32 AN 3/32 HP
 3/6/2023 F185L ASA# 4260351

HOOK'S FULL FIGURES 11F TJ DIESEL 350Z
FIVE STAR JACKSON J10 **DRAKE MISS D185F**
 KBHR F316 DRAKE SIM-BLAZE X185D

CE	BW	WW	YW	ADG	MCE	MILK	MWW	STAY
13.5	-1.2	74.2	114.5	0.25	8.9	21.7	58.5	13.5
40	25	55	55	60	20	70	65	65

DOC	CW	YG	MARB	BF	REA	API	TI
15.7	40.4	-0.38	0.41	-0.047	1.21	138.0	83.3
15	35	10	40	45	2	40	40

BW 84 ADJ. WW 591



DRAKE BULL F185L Sells as Lot 30.

Red bull with good ADG of 4.61 and YW of 1324. Want to put some white face on them. Look here!

LOT 31 **DRAKE BULL Z11L** **GGP**

Red II Hetero Polled PB SM
 3/18/2023 Z11L ASA# 4260360

HOOK'S FULL FIGURES 11F HTP/SVF HEARTBREAKER W38
FIVE STAR JACKSON J10 **DRAKE MISS JS11Z**
 KBHR F316 JS MISS DYMOND 11W

CE	BW	WW	YW	ADG	MCE	MILK	MWW	STAY
20.6	-0.9	69.8	104.6	0.22	11.9	23.9	58.5	17.7
1	15	80	75	70	1	45	65	25

DOC	CW	YG	MARB	BF	REA	API	TI
9.7	22.6	-0.28	0.26	-0.044	0.72	154.4	80.8
75	75	90	35	95	85	20	45

BW 68 ADJ. WW 677



DRAKE BULL Z11L Sells as Lot 31.

A top red bull. He is in the top 1% C.E, 15% B.W, 1% MCE and a top 20% API. Should be an easy calving sire. He gained 4.33 lbs/day. Projected Y.W of 1370.



POSS DEADWOOD

The \$900,000 sensation that has revolutionized the Angus breed for growth and \$Combined along with amazing terminal traits. The Deadwood SimAngus bulls will produce growth and power rarely found in any breed.



POSS DEADWOOD Sire of Lots 32-35.



DRAKE BULL J1L Sells as Lot 32.

LOT **32** **DRAKE BULL J1L** **GGP**

Homo Black Homo Polled		1/2 SM 1/2 AN
1/22/2023	J1L	ASA# 4260373

POSS MAVERICK		KBHR BACKROADS G014							
POSS DEADWOOD		DRAKE MISS 1J							
POSS ELLUNAMERE 399		TJ 133G							
	CE	BW	WW	YW	ADG	MCE	MILK	MWW	STAY
EPD	9.5	5.0	104.7	176.4	0.45	5.2	27.0	79.9	10.8
Rank	85	99	1	1	1	80	25	2	85
	DOC	CW	YG	MARB	BF	REA	API	TI	
EPD	15.4	74.5	-0.01	0.81	-0.007	0.82	151.5	103.5	
Rank	20	1	95	5	90	30	20	1	
BW		ADJ. WW							
87		723							

A power SimAngus bull. Top 1% EPDS for WW, JW, ADG, CW, Top 2% for MWW, Top 5% for Marb., Top 20% API and Top 1% TI. J1L has a WW of 723, gain of 4.56 lbs/day and YW of 1443. Sired by the \$900,000 POS Deadwood. The "Deadwoods" have worked very well on the Simmys with Top WW, ADG, and YW every time.



DRAKE BULL J76L Sells as Lot 33.

LOT **33** **DRAKE BULL J76L** **GGP**

Homo Black Homo Polled		1/2 SM 1/2 AN
2/11/2023	J76L	ASA# 4260348

POSS MAVERICK		TJ PLATTE RIVER 370D							
POSS DEADWOOD		DRAKE MISS E76J							
POSS ELLUNAMERE 399		DRAKE MISS B76E							
	CE	BW	WW	YW	ADG	MCE	MILK	MWW	STAY
EPD	12.3	1.3	89.3	140.4	0.32	6.1	28.4	73.6	15.1
Rank	55	70	10	15	20	65	20	10	45
	DOC	CW	YG	MARB	BF	REA	API	TI	
EPD	18.0	64.8	-0.04	0.78	-0.004	0.80	160.2	97.7	
Rank	4	2	95	10	90	35	15	4	
BW		ADJ. WW							
79		761							

This one stops everyone in their tracks. So powerful, so attractive, and so much performance. He had a WW of 761 lbs, ADG of 5.39 lbs, and an astonishing YW of 1614 lbs. The highest YW I've had in over 70 years in the cattle business. His EPDs back this up with WW top 10%, YW top 15%, ADG top 20%. MWW top 10%, the all-important Docility top 4%. API 160 putting him in the top 15%. TI 97.7 top 4%



LOT 34 **DRAKE BULL J34L** **GGP**
 Homo Black II Homo Polled 1/2 SM 1/2 AN
 2/12/2023 J34L ASA# 4260346

POSS MAVERICK HOOK'S EAGLE 6E
POSS DEADWOOD **DRAKE MISS Z34J**
 POSS ELLUNAMERE 399 DRAKE NIGHTENGALE

	CE	BW	WW	YW	ADG	MCE	MILK	MWW	STAY
EPD	8.9	4.4	98.9	152.5	0.34	3.6	22.4	72.4	13.0
Rank	90	99	2	4	10	95	65	10	70
	DOC	CW	YG	MARB	BF	REA	API	TI	
EPD	11.6	70.8	-0.04	0.80	0.002	0.95	150.6	99.0	
Rank	60	1	95	5	95	15	25	3	
BW					ADJ. WW				
87					768				

These Deadwood-Simmental bulls are the real thing. J34L is one of our favorites. They put the pounds on in such beautiful packages. His growth EPDs are top 2% for WW, top 4% for YW, top 10% ADG, and top 10% MWW. Great carcass with top 1% CW and top 5% Marb. J34L has a WW of 768 lbs, ADG of 4.94 lbs, and a YW of 1550 lbs.



DRAKE BULL J34L Sells as Lot 34.

LOT 35 **HARLAN BULL GJ26L** **GGP**
 Homo Black II Homo Polled 1/2 SM 1/2 AN
 1/23/2023 GJ26L ASA# 4259730

POSS MAVERICK TJ ROUGH COUNTRY 219G
POSS DEADWOOD **HARLAN FANCY LIKE G26J**
 POSS ELLUNAMERE 399 HARLAN COW D26G

	CE	BW	WW	YW	ADG	MCE	MILK	MWW	STAY
EPD	12.8	3.0	96.7	160.7	0.40	6.3	28.7	76.9	9.1
Rank	50	90	3	2	2	60	15	3	95
	DOC	CW	YG	MARB	BF	REA	API	TI	
EPD	14.2	68.6	0.08	0.78	0.019	0.67	150.1	100.4	
Rank	30	1	99	10	99	55	25	2	
BW					ADJ. WW				
83					717				

This attractive half blood Poss Deadwood son is one that could put pounds on your calves. He is in the top 3% for weaning weight and top 2% for both YW and ADG. His personal ADG was 4.66lbs/day getting him to a YW of 1454 lbs.



HARLAN BULL GJ26L Sells as Lot 35.

LOT 36 **IRON CREEK J100L** **GGP**
 Hetero Black II Homo Polled 1/2 SM 5/16 CS 3/16 AN
 1/19/2023 J100L ASA# 4260384

HOOK'S BEACON 56B HOOK'S FULL FIGURES 11F
KBHR HONOR H060 **100J**
 WS MISS SUGAR C4 TJ 584D

	CE	BW	WW	YW	ADG	MCE	MILK	MWW	STAY
EPD	16.2	-2.9	85.6	137.5	0.32	10.4	27.8	70.4	20.2
Rank	15	10	20	15	20	10	20	15	4
	DOC	CW	YG	MARB	BF	REA	API	TI	
EPD	10.6	47.8	-0.31	0.58	-0.029	1.25	172.7	97.4	
Rank	75	15	25	20	70	1	4	5	
BW					ADJ. WW				
73					670				

A breeder's bull with perhaps the most balanced, elite set of EPDs in our offering and backed by predictable excellence in his pedigree. His dam is a full sister to last year's top selling bull at \$16,000 to Rex Harris and he is sired by KBHR Honor, a son of the most famous and accomplished Simmental cow in the breed, WS Miss Sugar C4. This bull has 16 traits and indexes in the top 25% of the breed-elite balance across all traits. GAINED 5.11 POUNDS PER DAY TO POST A 1,480 YEARLING WEIGHT. And his phenotype is outstanding. An outstanding breeding bull with semen selling potential.



IRON CREEK J100L Sells as Lot 36.



HARLAN BULL DZL Sells as Lot 37.



ELLINGSON MS PROPHET J145 Dam of Lot 37.

LOT **37** HARLAN BULL DZL **GGP**
 Homo Black II Homo Polled 1/2 SM 1/2 AN
 2/8/2023 DZL ASA# 4259733

TJ CHIEF 460G G A R PROPHET
TJ WAR PAINT 759J **ELLINGSON MS PROPHET J145**
 TJ 2D ELLINGSON MS EAGLE G913

	CE	BW	WW	YW	ADG	MCE	MILK	MWW	STAY
EPD	9.7	0.6	84.7	137.5	0.33	4.6	36.0	78.0	17.3
Rank	85	55	20	15	15	85	1	2	20
	DOC	CW	YG	MARB	BF	REA	API	TI	
EPD	16.3	44.6	-0.07	0.67	0.008	0.74	155.8	93.9	
Rank	15	25	90	15	95	45	15	10	
	BW				ADJ. WW				
	84				556				

A half blood brockle faced Warpaint out of the \$9000 Ellingson Ms Prophet J145 heifer. DZL is one of those that catches your eye any time you run across him in the lot. To pair with his phenotype he has a solid set of EPDs top 20% for WW and top 15 % for YW.





TJ WAR PAINT 759J Sire of Lots 38-41.

TJ WAR PAINT 759J

The \$70,000 Triangle J Ranch sale topper owned with ABS, Trauernicht Simmental and Triangle J Ranch, War Paint has developed into a popular AI sire around the country by siring stout, attractive fast growing bulls and massive bodied, feminine daughters. Outstanding growth and maternal EPDs.

LOT **38** **HARLAN BULL 76L** **GGP**

Homo Black II Homo Polled 1/2 SM 1/2 AN
 1/19/2023 76L ASA# 4259728

TJ CHIEF 460G SANDEEN RAINMAKER 2007
TJ WAR PAINT 759J **DRAKE MISS U76D**
 TJ 2D DRAKE MISS P76U

	CE	BW	WW	YW	ADG	MCE	MILK	MWW	STAY
EPD	13.5	-3.6	58.8	91.2	0.20	5.3	35.0	64.7	23.2
Rank	40	10	95	95	90	75	2	35	1
	DOC	CW	YG	MARB	BF	REA	API	TI	
EPD	14.3	9.8	-0.05	0.25	0.015	0.28	144.7	72.5	
Rank	30	99	95	70	99	99	30	80	
	BW				ADJ. WW				
	77				589				

76L is a solid black War Paint bull out of one of my favorite cows. He is a deep bodied bull that could make some females.



HARLAN BULL 76L Sells as Lot 38.

LOT **39** **DRAKE BULL 390L** **GGP**

Homo Black II Homo Polled 5/8 SM 3/8 AN
 3/12/2023 390L ASA# 4260369

TJ CHIEF 460G TJ PLATTE RIVER 370D
TJ WAR PAINT 759J **DRAKE MISS KD390F**
 TJ 2D DRAKE MISS K390D

	CE	BW	WW	YW	ADG	MCE	MILK	MWW	STAY
EPD	13.0	-2.0	68.7	101.0	0.20	5.8	31.4	65.8	21.6
Rank	45	20	75	80	90	70	10	30	2
	DOC	CW	YG	MARB	BF	REA	API	TI	
EPD	18.9	30.4	-0.14	0.54	0.004	0.76	157.6	83.6	
Rank	3	65	75	25	95	40	15	40	
	BW				ADJ. WW				
	77				633				

API Top 15%



DRAKE BULL 390L Sells as Lot 39.



DRAKE BULL H765L Sells as Lot 40.

LOT 40 **DRAKE BULL H765L** **GGP**

Homo Black II Homo Polled 5/8 SM 3/8 AN
 2/12/2023 H765L ASA# 4260374

TJ CHIEF 460G TJ AMERICAN FORTITUDE 430F
TJ WAR PAINT 759J **DRAKE MISS X765H**
 TJ 2D DRAKE MISS L765X

	CE	BW	WW	YW	ADG	MCE	MILK	MWW	STAY
EPD	4.5	5.0	103.4	166.1	0.39	0.9	33.6	85.1	19.3
Rank	99	99	1	1	2	99	3	1	10
	DOC	CW	YG	MARB	BF	REA	API	TI	
EPD	15.1	54.0	-0.16	0.09	-0.034	0.81	121.1	84.6	
Rank	20	10	70	95	60	30	70	35	
	BW				ADJ. WW				
	59				617				

Sired by the popular "TJ Warpaint," this guy is a pound machine. His EPDs put him in the top 1% for WW, YW, MWW and the top 2% for ADG and top 3% for milk. He's in the Top 10% for Stay and CW.



DRAKE BULL 77L Sells as Lot 41.

LOT 41 **DRAKE BULL 77L** **GGP**

Homo Black II Homo Polled 5/8 SM 3/8 AN
 2/12/2023 77L ASA# 4260376

TJ CHIEF 460G TJ AMERICAN FORTITUDE 430F
TJ WAR PAINT 759J **DRAKE MISS X765H**
 TJ 2D DRAKE MISS L765X

	CE	BW	WW	YW	ADG	MCE	MILK	MWW	STAY
EPD	8.0	3.9	90.4	140.2	0.31	3.3	33.6	78.6	18.5
Rank	95	99	10	15	25	95	3	2	15
	DOC	CW	YG	MARB	BF	REA	API	TI	
EPD	13.8	34.4	-0.14	0.15	-0.019	0.63	122.5	79.5	
Rank	35	50	75	85	85	65	65	55	
	BW				ADJ. WW				
	55				577				

Best disposition in the sale. Has top WW, YW, ADG, Milk and Stay numbers. Sired by "TJ War Paint" and he does have the look.



Born Free is sired by the immortal Eagle and out of our massive TJ 29B "Bea" donor. A very attractive and stout fall bull with top 10% growth and outstanding maternal and carcass traits. Balanced excellence with a top 2% TI and 20% API. G+ and ATM by RightChoice- proven genetics for profitability and end product.



IRON CREEK BORN FREE 29K Sells as Lot 42.



TJ MISS 29B Dam of Lot 42.

LOT 42 **IRON CREEK BORN FREE 29K** **GGP**

Homo Black II Homo Polled 5/8 SM 3/8 AN
 8/19/2022 29K ASA# 4211310

HOOK'S BLACK HAWK 50B CCR COWBOY CUT 5048Z
HOOK'S EAGLE 6E **TJ MISS 29B**
 HOOK'S CRYSTAL 1C TJ MISS NEW DAY U19

	CE	BW	WW	YW	ADG	MCE	MILK	MWW	STAY
EPD	11.7	1.2	93.4	147.7	0.34	5.3	29.3	75.8	10.1
Rank	65	70	5	10	10	75	15	4	90
	DOC	CW	YG	MARB	BF	REA	API	TI	
EPD	18.9	51.8	-0.27	0.82	-0.041	1.08	154.8	102.4	
Rank	3	10	35	4	45	10	20	2	
	BW				ADJ. WW				



LOT 43 **IRON CREEK FORGED 601K** **GGP**

Homo Black II Homo Polled 5/8 SM 3/8 AN
 8/9/2022 601K ASA# 4211316

HOOK'S BLACK HAWK 50B CCR SPARTAN 9124A
HOOK'S EAGLE 6E **JC MS SPARTAN 601D**
 HOOK'S CRYSTAL 1C JC MS FORCE 406B

	CE	BW	WW	YW	ADG	MCE	MILK	MWW	STAY
EPD	11.0	3.5	102.9	157.8	0.34	4.6	19.6	70.8	9.4
Rank	75	95	1	2	10	85	85	15	90
	DOC	CW	YG	MARB	BF	REA	API	TI	
EPD	20.6	65.8	-0.30	0.61	-0.061	1.19	139.9	98.9	
Rank	1	2	30	20	20	3	40	3	
	BW				ADJ. WW				



IRON CREEK FORGED 601K Sells as Lot 43.

Get these Eagle sons while you can-especially out of cows like the 601 cow. We acquired her from Advanced Beef Genetics several years ago and she continues to produce year after year-a big bodied, sweet fronted producer. Top 1 and 2% weaning and yearling EPDs with pet-like docility and breed leading carcass traits. ATM by RightChoice as would be expected from his top 2% carcass weight, 3% ribeye area and 1% tenderness EPDs.



JC MS SPARTAN 601D Dam of Lot 43.

HOOK'S EAGLE 6E

What more can be said about this breed icon. The leader in registrations for the entire Simmental breed for several years and for good reason. He transmits an excellent power look with broad based, outstanding EPDs. A cow and stud bull producer with no equal to date.



HOOK'S EAGLE 6E Sire of Lots 44-48.



IRON CREEK RUGER 166K Sells as Lot 44.

LOT
44

IRON CREEK RUGER 166K

Homo Black II Homo Polled
9/23/2022 166K

HOOK'S BLACK HAWK 50B
HOOK'S EAGLE 6E
HOOK'S CRYSTAL 1C

GGP

3/4 SM 1/4 AN
ASA# 4224748

HOOK'S BEACON 56B
IRON CREEK BEA'S GIRL D166AH
TJ MISS 29B

	CE	BW	WW	YW	ADG	MCE	MILK	MWW	STAY
EPD	13.5	0.5	91.3	149.3	0.36	6.1	27.8	73.2	15.4
Rank	40	55	10	5	10	65	20	10	40
	DOC	CW	YG	MARB	BF	REA	API	TI	
EPD	14.2	41.3	-0.45	0.63	-0.053	1.38	159.8	98.7	
Rank	30	30	3	15	30	1	15	4	
BW					ADJ. WW				

An Eagle son out of a Beacon daughter of our Bea donor. Elite balanced EPDs are not a surprise with that pedigree. Top 5-10% growth and gain, top 1-15% carcass traits with excellent milk and maternal weaning, all with moderate calving ease. A fall bull that will cover a lot of cows and add pay weight and carcass premiums to your calf crop.



DRAKE BULL G202L Sells as Lot 45.

LOT
45

DRAKE BULL G202L

Homo Black II Homo Polled
3/12/2023 G202L

HOOK'S BLACK HAWK 50B
HOOK'S EAGLE 6E
HOOK'S CRYSTAL 1C

GGP

PB SM
ASA# 4260382

TJ PLATTE RIVER 370D
DRAKE MISS B202G
DRAKE MISSN202B

	CE	BW	WW	YW	ADG	MCE	MILK	MWW	STAY
EPD	12.9	-2.6	76.7	110.2	0.21	4.7	22.2	60.2	15.6
Rank	30	4	55	65	75	75	60	60	50
	DOC	CW	YG	MARB	BF	REA	API	TI	
EPD	18.7	20.7	-0.25	0.39	-0.039	0.62	152.2	88.8	
Rank	2	80	95	20	99	95	20	20	
BW					ADJ. WW				
75					691				

Easy keeping, easy going Eagle son. Good calving ease with a top 4% EPD for BW. WW of 691 lbs, ADG of 4.22 lbs and a projected YW of 1342 lbs.



LOT 46 **DRAKE BIG EASY** **GGP**
 Homo Black II Homo Polled 3/4 SM 1/4 AN
 12/20/2022 K80 ASA# 4268571

HOOK'S BLACK HAWK 50B CCR COWBOY CUT 5048Z
HOOK'S EAGLE 6E **DRAKE COWBOY LADY J103**
 HOOK'S CRYSTAL 1C DRAKE IMPOSSIBLE

	CE	BW	WW	YW	ADG	MCE	MILK	MWW	STAY
EPD	9.2	2.2	99.6	160.3	0.38	3.9	22.1	71.7	14.4
Rank	90	85	2	2	3	90	70	10	55
	DOC	CW	YG	MARB	BF	REA	API	TI	
EPD	19.6	34.9	-0.39	0.57	-0.057	1.09	148.5	98.5	
Rank	2	50	10	20	30	10	25	4	
BW					ADJ. WW				
88					851				

We call this guy Big Easy. He is one of our all time performance leaders and is puppy dog tame. Posted an 851 lb. Weaning weight, gained 4.55 lbs. per day on test, with an adjusted yearling wt. of 1538 lbs. This personal performance is backed up by a top 2% weaning and yearling weight EPD profile. This is a 6+ frame score bull that is full throttle for growth. Dam is a gorgeous, Cowboy Cut daughter that flat out gets it done. Homozygous, polled, homozygous black.



DRAKE BIG EASY Sells as Lot 46.

LOT 47 **DRAKE EAGLE FORCE** **GGP**
 Homo Black II Homo Polled PB SM
 1/20/2023 L6 ASA# 4268572

HOOK'S BLACK HAWK 50B DRAKE IN COMMAND
HOOK'S EAGLE 6E **DRAKE COMMAND LADY X59**
 HOOK'S CRYSTAL 1C DRAKET3

	CE	BW	WW	YW	ADG	MCE	MILK	MWW	STAY
EPD	12.1	1.7	83.5	127.9	0.28	6.0	20.4	61.9	12.6
Rank	40	60	30	25	25	50	75	50	80
	DOC	CW	YG	MARB	BF	REA	API	TI	
EPD	12.5	53.5	-0.38	0.46	-0.085	1.10	146.6	90.5	
Rank	40	3	60	10	30	15	25	15	
BW					ADJ. WW				
82					733				

A very attractive baldy purebred Eagle Son with a well balanced EPD profile. Posted a 733 lb. weaning weight and gained 5.4 lbs. per day on test giving him a projected yearling wt. of 1596 lbs. His dam Drake Command Lady X59 is a beautiful cow who has produced her share of herd sires including Drake Down N Dirty who we used for several years and can be found in our best pedigrees. Homozygous polled, homozygous black.



DRAKE EAGLE FORCE Sells as Lot 47.

LOT 48 **DRAKE EAGLE L5** **GGP**
 Homo Black II Homo Polled PB SM
 1/23/2023 L5 ASA# 4274023

HOOK'S BLACK HAWK 50B CCR COWBOY CUT 5048Z
HOOK'S EAGLE 6E **DRAKE COWBOY J104**
 HOOK'S CRYSTAL 1C DRAKE MISS X33

	CE	BW	WW	YW	ADG	MCE	MILK	MWW	STAY
EPD	14.7	-0.2	97.4	143.5	0.29	6.7	22.8	71.3	19.1
Rank	15	25	4	10	20	35	55	15	15
	DOC	CW	YG	MARB	BF	REA	API	TI	
EPD	14.9	31.3	-0.38	0.39	-0.050	1.06	167.0	99.7	
Rank	15	40	60	20	95	20	10	3	
BW					ADJ. WW				
80					788				

This Purebred Eagle Son really packs a punch. Powerful performance on a moderate frame with an EPD profile that backs up his personal performance. We love his type and kind. Out of a beautiful Cowboy Cut daughter that has just a shot of frame. 788 pound weaning weight, 1416 lb. Yearling weight, gained 4 lbs. per day on test. Homozygous polled, homozygous black.



DRAKE EAGLE L5 Sells as Lot 48.

KBHR HONOR H060

We wanted to incorporate some Honor in our program as a purebred bull and have been really happy with the results. He is a true beef bull as the cattle study with an immense amount of rib, body and extra muscle. Genetically these big spread bulls will sire modest birth weights and explosive weaning weights and will transmit a great tandem of carcass traits. Here a sire group who will ultimately be great higher percentage bulls destined to pass on value.



KBHR HONOR H060 Sire of Lots 49-51.



IRON CREEK WITH HONORS 641K Sells as Lot 49.

LOT 49 IRON CREEK WITH HONORS 641K ♂GGP

Homo Black II Homo Polled 3/4 SM 1/4 AN
8/21/2022 641K ASA# 4211323

HOOK'S BEACON 56B HOOK'S EAGLE 6E
KBHR HONOR H060 TJ 641G
WS MISS SUGAR C4 TJ 120C

	CE	BW	WW	YW	ADG	MCE	MILK	MWW	STAY
EPD	15.6	-3.8	83.1	135.6	0.33	7.9	30.6	71.9	18.9
Rank	20	5	25	20	15	35	10	10	10
	DOC	CW	YG	MARB	BF	REA	API	TI	
EPD	14.7	32.8	-0.23	0.69	-0.007	0.98	175.9	99.8	
Rank	25	55	50	10	90	15	3	3	
	BW				ADJ. WW				

This bull is just what we hoped for when we crossed one of our top Eagle daughters with KBHR Honor-14 traits and indexes in the top 25% of the breed including outstanding calving ease, gain, maternal and carcass traits- he literally will do it all. A top 3% API and TI and his G+ RightChoice rating confirm his broad based genomic excellence.



IRON CREEK HONOR'S CHOICE 90K Sells as Lot 50.

LOT 50 IRON CREEK HONOR'S CHOICE 90K ♂GGP

Homo Black II Homo Polled PB SM
7/29/2022 90K ASA# 4224738

HOOK'S BEACON 56B HOOK'S ENCORE 65E
KBHR HONOR H060 BRIDLE BIT MS CHOICE G994
WS MISS SUGAR C4 BRIDLE BIT MISS B452

	CE	BW	WW	YW	ADG	MCE	MILK	MWW	STAY
EPD	18.4	-3.4	70.2	112.1	0.26	11.1	29.3	64.2	23.4
Rank	2	2	80	60	40	2	10	40	1
	DOC	CW	YG	MARB	BF	REA	API	TI	
EPD	10.0	31.1	-0.38	0.52	-0.055	1.04	184.3	92.1	
Rank	70	45	60	10	85	20	2	15	
	BW				ADJ. WW				

We purchased embryos from the G994 cow to add her outstanding calving ease and maternal traits to our herd. Sired by Honor, Honor's Choice provides these traits to you-top 2% calving ease, birthweight and maternal calving ease with top 1% Stay and a 184 TI. This EPD set, along with his G+ RightChoice designation, assure you of outstanding calving ease and maternal traits with strong carcass performance.



LOT **51** **DRAKE BULL J26L** **GGP**
 Homo Black II Homo Polled 3/4 SM 1/4 AN
 2/13/2023 J26L ASA# 4260371

HOOK'S BEACON 56B TJ FRANCHISE 451D
KBHR HONOR H060 **DRAKE MISS B26J**
 WS MISS SUGAR C4 DRAKE MISS Z26B

	CE	BW	WW	YW	ADG	MCE	MILK	MWW	STAY
EPD	14.8	-3.7	71.2	102.0	0.19	7.3	28.9	64.4	18.6
Rank	25	10	70	80	95	45	15	35	15
	DOC	CW	YG	MARB	BF	REA	API	TI	
EPD	11.5	31.0	0.00	0.61	0.035	0.57	159.9	87.7	
Rank	65	65	99	20	99	75	15	25	
	BW				ADJ. WW				
	77				762				

This one's a really nice "Honor" son with good CE and BW numbers. Top 15% API. Has ACE rating for calving ease and G+ rating.



DRAKE BULL J26L Sells as Lot 51.

SIMMENTAL AND SIMANGUS™ YEARLING BULLS

So God Made a Farm Wife.

On the 9th day God looked down on his first creation and said "This is good, but the farmer needs a helper." So, God created a Farm Wife.

God said, "I need someone who can rise early enough to make coffee and have at least two cups before waking the Farmer to start the day. She needs to be able to care for the kids, make the house a home, run the farm office and work beside the farmer. She needs to prepare the meals that feed anywhere from two to ten on any given day. She can plan, cook, and deliver meals to the field if needed." So, God made a farmer's wife.

God said "I need somebody willing to sit up all night with their newborn child. Watch their children grow. Then pray each morning and teach their children to say 'please and thank you.' I need somebody who can make an egg sandwich, plan a budget without a paycheck or thicken soup, who can deliver vinegar, baking soda, and hot water." So, God made a farmer's wife.

God said "I need somebody strong enough to plant trees and throw bales, to co-sign a loan for a half million dollars with steady hands, yet gentle enough to tame show calves, raise the kids and calm the farmer when he is upset over higher rent or lower corn, who will stop her work to help a neighbor. Somebody to wash, dry, iron, tidy, feed, rake, water, drive, check homework, pack lunches, remember schedule and chase cattle through the cornfield eight months pregnant." So, God made a farmer's wife.

"Somebody who would sew a family together with soft strong stitches of sharing....." So, God made a Grammie.

TJ BONAFIDE 647H

Larry's \$16,000 selection from Triangle J Ranch in Nebraska. This Eagle son mirrors his sire's broad based excellence and adds more growth than Eagle along with outstanding maternal traits. He personifies our belief that great bulls will make both outstanding herd sires and outstanding replacement females.



TJ BONAFIDE 647H Sire of Lots 52-54.



DRAKE BULL D266L Sells as Lot 52.

LOT
52

DRAKE BULL D266L

Homo Black || Homo Polled
3/15/2023 D266L

HOOK'S EAGLE 6E
TJ 23D

TJ BONAFIDE 647H

HOOK'S BASIN 27B
DRAKE MISS A266D
DRAKE MISS Y266A

GGP

5/8 SM 3/8 AN
ASA# 4260353

	CE	BW	WW	YW	ADG	MCE	MILK	MWW	STAY		
EPD	15.1	-1.5	87.4	140.5	0.33	7.6	28.8	72.3	14.7		
Rank	25	25	15	15	15	40	15	10	50		
	DOC	CW	YG	MARB	BF	REA	API	TI			
EPD	16.7	27.7	-0.28	0.61	-0.044	0.76	159.6	97.3			
Rank	10	75	35	20	45	40	15	5			
		BW							ADJ. WW		
		76							757		

Big Spread from BW to YW here. Top 25% in both CE and BW. Then top 15% in YW, WW, and ADG. 159.6 API and 97.3 TI.



DRAKE BULL F364L Sells as Lot 53.

LOT
53

DRAKE BULL F364L

Homo Black || Homo Polled
2/28/2023 F364L

HOOK'S EAGLE 6E
TJ 23D

TJ BONAFIDE 647H

TJ PLATTE RIVER 370D
DRAKE MISS C364F
DRAKE FRACAS

GGP

3/4 SM 1/4 AN
ASA# 4260358

	CE	BW	WW	YW	ADG	MCE	MILK	MWW	STAY		
EPD	13.3	1.9	97.5	154.7	0.36	6.3	25.9	74.5	17.0		
Rank	40	80	3	3	10	60	35	5	25		
	DOC	CW	YG	MARB	BF	REA	API	TI			
EPD	18.0	42.9	-0.29	0.42	-0.065	0.84	149.8	94.3			
Rank	4	25	30	40	20	30	25	10			
		BW							ADJ. WW		
		86							774		

He is in the top 3% W.W. and Y.W, and Top 4% Docility. He gained 4.22 lbs/day with a 774 W.W. and 1445 Y.W.

LOT
54

DRAKE BULL D765L



Homo Black II Homo Polled
3/4/2023 D765L ASA# 4260359
5/8 SM 3/8 AN

HOOK'S EAGLE 6E

SS/PRS CHASIN TAIL 18A

TJ BONAFIDE 647H

DRAKE MISS T765D

TJ 23D

DRAKE MISS 765T

CE	BW	WW	YW	ADG	MCE	MILK	MWW	STAY
13.8	-0.3	75.5	122.0	0.29	7.1	27.1	64.6	17.0
35	40	50	40	35	45	25	35	25

DOC	CW	YG	MARB	BF	REA	API	TI
14.5	37.9	-0.21	0.26	-0.044	0.70	135.8	79.2
25	40	55	70	45	50	45	55

BW	ADJ. WW
82	672

1388 lb. Y.W, Sired by the high growth bull T.J. Bonafide



DRAKE BULL D765L Sells as Lot 54.

2024 PUREBRED SIMMENTAL PERCENTILE TABLE

%	\$API	\$TI	CE	BW	WW	ADG	YW	MCE	MILK	MWW	STAY	DOC	CW	YG	MARB	BF	REA	SF
1	184.70	104.33	18.60	-3.80	102.60	0.37	159.70	11.20	34.20	79.80	22.60	19.10	59.00	-0.56	0.74	-0.12	1.35	-0.47
2	178.46	101.67	17.70	-3.10	99.40	0.36	154.50	10.60	32.80	77.80	21.70	18.20	54.80	-0.54	0.67	-0.11	1.28	-0.45
3	174.70	99.61	17.10	-2.60	97.40	0.35	151.00	10.20	31.90	76.50	21.00	17.60	52.20	-0.53	0.62	-0.11	1.24	-0.44
4	171.76	98.17	16.60	-2.40	95.80	0.34	148.50	9.90	31.30	75.50	20.60	17.10	50.40	-0.52	0.58	-0.11	1.22	-0.43
5	169.14	96.98	16.30	-2.10	94.60	0.33	146.40	9.60	30.80	74.70	20.30	16.80	48.80	-0.51	0.55	-0.10	1.19	-0.43
10	160.62	93.01	15.00	-1.20	90.60	0.31	139.00	8.80	29.00	71.90	19.30	15.50	43.80	-0.48	0.45	-0.10	1.11	-0.41
15	154.76	90.30	14.20	-0.70	87.80	0.30	134.10	8.20	27.90	69.90	18.60	14.70	40.50	-0.47	0.39	-0.09	1.06	-0.40
20	149.91	88.25	13.60	-0.30	85.70	0.28	130.40	7.70	26.90	68.30	18.10	14.00	38.10	-0.45	0.34	-0.09	1.02	-0.39
25	145.75	86.32	13.10	0.10	83.80	0.27	127.10	7.30	26.10	66.90	17.60	13.50	36.10	-0.44	0.29	-0.09	0.99	-0.38
30	142.04	84.75	12.60	0.40	82.10	0.27	124.20	6.90	25.40	65.60	17.10	13.10	34.30	-0.43	0.26	-0.08	0.96	-0.37
35	138.86	83.29	12.30	0.70	80.70	0.26	121.60	6.60	24.70	64.50	16.70	12.60	32.70	-0.42	0.23	-0.08	0.94	-0.36
40	135.99	81.92	11.90	0.90	79.40	0.25	119.10	6.30	24.10	63.30	16.30	12.20	31.20	-0.41	0.20	-0.08	0.91	-0.36
45	133.23	80.59	11.60	1.20	78.20	0.24	117.00	6.00	23.50	62.20	15.80	11.90	29.80	-0.40	0.17	-0.08	0.89	-0.35
50	130.56	79.37	11.20	1.40	77.10	0.24	114.80	5.70	22.90	61.20	15.40	11.50	28.40	-0.39	0.15	-0.07	0.87	-0.34
55	128.07	78.16	10.90	1.60	75.80	0.23	112.70	5.50	22.30	60.20	14.90	11.10	27.10	-0.38	0.13	-0.07	0.85	-0.33
60	125.49	77.00	10.60	1.90	74.70	0.22	110.60	5.20	21.80	59.10	14.40	10.70	25.80	-0.36	0.11	-0.07	0.83	-0.33
65	122.95	75.84	10.20	2.10	73.50	0.22	108.50	4.90	21.10	58.10	13.90	10.30	24.50	-0.35	0.08	-0.07	0.80	-0.32
70	120.52	74.73	9.80	2.30	72.20	0.21	106.30	4.70	20.50	57.00	13.40	9.90	23.20	-0.34	0.07	-0.06	0.78	-0.31
75	118.14	73.63	9.40	2.60	71.00	0.20	103.90	4.40	19.90	56.00	12.80	9.40	21.90	-0.33	0.04	-0.06	0.76	-0.30
80	115.72	72.47	8.90	2.80	69.60	0.19	101.50	4.00	19.20	54.90	12.20	8.80	20.30	-0.31	0.02	-0.06	0.73	-0.29
85	112.99	71.08	8.30	3.10	67.90	0.19	98.70	3.60	18.40	53.70	11.60	8.10	18.70	-0.30	0.00	-0.05	0.70	-0.28
90	110.11	69.40	7.50	3.60	65.90	0.17	95.20	3.20	17.30	52.30	10.80	7.10	16.60	-0.27	-0.04	-0.05	0.66	-0.27
95	105.86	67.09	6.30	4.30	62.90	0.16	90.00	2.40	15.80	50.10	9.80	5.50	13.70	-0.23	-0.08	-0.04	0.59	-0.25
Avg	130.56	79.37	11.20	1.40	77.10	0.24	114.80	5.70	22.90	61.20	15.40	11.50	28.40	-0.39	0.15	-0.07	0.87	-0.34

2024 HYBRID PERCENTILE TABLE

%	\$API	\$TI	CE	BW	WW	ADG	YW	MCE	MILK	MWW	STAY	DOC	CW	YG	MARB	BF	REA	SF
1	185.66	103.09	20.80	-5.70	100.70	0.40	161.70	12.50	35.10	80.00	22.00	20.20	66.90	-0.48	1.01	-0.10	1.24	-0.48
2	179.11	100.38	19.70	-4.90	97.50	0.38	156.50	11.80	33.60	77.90	21.10	19.10	62.30	-0.45	0.91	-0.09	1.19	-0.47
3	174.82	98.73	19.00	-4.30	95.70	0.37	152.90	11.30	32.70	76.50	20.50	18.40	59.70	-0.43	0.86	-0.09	1.16	-0.45
4	171.80	97.47	18.50	-4.00	94.10	0.36	150.00	11.00	32.10	75.40	20.10	17.90	57.60	-0.42	0.81	-0.09	1.12	-0.45
5	169.36	96.46	18.10	-3.70	92.90	0.36	147.70	10.70	31.50	74.40	19.70	17.50	56.00	-0.41	0.78	-0.08	1.09	-0.44
10	160.84	93.07	16.70	-2.60	88.80	0.33	140.70	9.80	29.70	71.60	18.60	16.30	50.60	-0.37	0.68	-0.07	0.99	-0.42
15	155.10	90.62	15.80	-2.00	86.10	0.32	136.00	9.20	28.50	69.60	17.80	15.40	47.20	-0.34	0.61	-0.07	0.93	-0.40
20	150.83	88.73	15.20	-1.50	83.90	0.31	132.10	8.70	27.70	68.00	17.20	14.80	44.80	-0.32	0.56	-0.06	0.88	-0.39
25	147.13	87.05	14.60	-1.10	82.10	0.30	128.70	8.30	26.90	66.60	16.70	14.30	42.70	-0.30	0.51	-0.06	0.84	-0.38
30	143.79	85.48	14.10	-0.70	80.40	0.29	125.70	8.00	26.20	65.50	16.20	13.80	40.80	-0.28	0.47	-0.05	0.80	-0.38
35	140.52	84.03	13.70	-0.40	78.90	0.28	123.00	7.60	25.60	64.30	15.70	13.40	39.10	-0.26	0.44	-0.05	0.77	-0.37
40	137.41	82.67	13.20	-0.10	77.50	0.27	120.50	7.30	25.00	63.30	15.30	13.00	37.40	-0.25	0.40	-0.05	0.74	-0.36
45	134.41	81.29	12.80	0.20	76.20	0.26	118.10	7.00	24.40	62.30	14.80	12.60	35.70	-0.23	0.37	-0.04	0.71	-0.35
50	131.44	79.98	12.50	0.40	74.90	0.25	115.70	6.70	23.80	61.20	14.40	12.20	34.20	-0.22	0.34	-0.04	0.69	-0.34
55	128.53	78.59	12.10	0.70	73.70	0.25	113.30	6.40	23.30	60.30	13.90	11.90	32.70	-0.20	0.31	-0.04	0.66	-0.34
60	125.42	77.25	11.70	1.00	72.50	0.24	110.90	6.10	22.80	59.30	13.50	11.50	31.10	-0.18	0.29	-0.03	0.63	-0.33
65	122.43	75.78	11.30	1.20	71.20	0.23	108.50	5.90	22.20	58.30	13.00	11.20	29.60	-0.16	0.26	-0.03	0.60	-0.32
70	119.17	74.32	11.00	1.50	69.80	0.22	106.20	5.50	21.50	57.20	12.40	10.70	28.00	-0.15	0.24	-0.02	0.57	-0.31
75	115.99	72.85	10.50	1.80	68.30	0.22	103.70	5.20	20.90	56.00	11.80	10.30	26.20	-0.13	0.21	-0.02	0.54	-0.31
80	112.46	71.30	10.00	2.20	66.60	0.21	100.80	4.80	20.20	54.70	11.20	9.80	24.30	-0.11	0.18	-0.02	0.50	-0.30
85	109.02	69.61	9.40	2.60	64.60	0.20	97.30	4.40	19.30	53.10	10.40	9.00	22.10	-0.08	0.14	-0.01	0.46	-0.28
90	104.32	67.60	8.60	3.10	62.00	0.19	93.10	3.80	18.20	51.30	9.30	8.10	19.40	-0.05	0.10	0.00	0.40	-0.27
95	98.00	64.67	7.40	3.80	58.00	0.17	86.60	2.90	16.60	48.60	7.90	6.40	15.20	0.00	0.05	0.01	0.32	-0.24
Avg	131.44	79.98	12.50	0.40	74.90	0.25	115.70	6.70	23.80	61.20	14.40	12.20	34.20	-0.22	0.34	-0.04	0.69	-0.34

SIMMENTAL AND SIMANGUS™ YEARLING BULLS

BSUM MOST WANTED 117J

Most Wanted was the top selling bull in the Black Summit sale in Powell, Wyoming. He is the kind we admire as he is soft made, easy-keeping, very sound on his feet and legs and easy on the eyes. His EPDs are excellent with 13 traits in the top 35% of the breed including top 10% calving ease and top 10-15% growth traits and top 15% API and TI.



BSUM MOST WANTED 117J Sire of Lots 55-58.



DRAKE BULL H21L Sells as Lot 55.

LOT 55 **DRAKE BULL H21L** **GGP**

Red II Homo Polled 3/4 SM 1/4 AN
 3/16/2023 H21L ASA# 4260364

TUEL COWMAKER A3032 WS ALL ABOARD B80
BSUM MOST WANTED 117J **DRAKE MISS Y21H**
 X/L MS 9103G DRAKE MISS W21Y

	CE	BW	WW	YW	ADG	MCE	MILK	MWW	STAY
EPD	18.1	-5.5	69.0	106.5	0.23	9.5	23.2	57.5	14.5
Rank	10	2	75	70	70	15	60	70	50

	DOC	CW	YG	MARB	BF	REA	API	TI
EPD	14.6	18.7	-0.35	0.52	-0.058	0.78	157.5	88.6
Rank	25	95	15	25	30	35	15	25

	BW	ADJ. WW
	76	675

Should be good calving ease here with his EPD in top 10% for CE and top 2% for BW. We really like our "Most Wanted" calves as they are soft made, easy flushing, efficient beef machines.



DRAKE BULL H17L Sells as Lot 56.

LOT 56 **DRAKE BULL H17L** **GGP**

Hetero Black II Hetero Polled 3/4 SM 1/4 AN
 3/15/2023 H17L ASA# 4260375

TUEL COWMAKER A3032 TJ PLATTE RIVER 370D
BSUM MOST WANTED 117J **DRAKE MISS D17H**
 X/L MS 9103G DRAKE MISS T17D

	CE	BW	WW	YW	ADG	MCE	MILK	MWW	STAY
EPD	15.6	2.7	101.9	157.4	0.35	7.6	27.7	78.4	14.5
Rank	20	90	1	2	10	40	25	2	50

	DOC	CW	YG	MARB	BF	REA	API	TI
EPD	15.5	60.4	-0.26	0.39	-0.053	1.07	145.4	95.3
Rank	15	3	40	45	30	10	30	10

	BW	ADJ. WW
	79	766

If you want pounds on your calves, take a look here. Top 1% WW, top 2% YW, Top 10% ADG, Top 2% MWW, Top 3% CW. His WW is 766 lbs with an ADG of 4.22 lbs and projected YW of 1442 lbs.



LOT 57 **IRON CREEK D651L** **GGP**

Hetero Black II Homo Polled 5/8 SM 3/8 AN
 3/17/2023 F651L ASA# 4260390

TUEL COWMAKER A3032 TJ PLATTE RIVER 370D
BSUM MOST WANTED 117J **IRON CREEK RIVER GYPSY D651F**
 X/L MS 9103G HRM MS SPARTAN D651

	CE	BW	WW	YW	ADG	MCE	MILK	MWW	STAY
EPD	14.2	1.6	90.7	137.9	0.30	7.6	27.3	72.4	10.1
Rank	30	75	10	15	30	40	25	10	90
	DOC	CW	YG	MARB	BF	REA	API	TI	
EPD	16.4	42.2	-0.29	0.30	-0.074	0.75	126.8	87.2	
Rank	10	30	30	60	10	40	60	25	
	BW				ADJ. WW				
	69				746				



IRON CREEK D651L Sells as Lot 57.

A very attractive Most Wanted son from an outstanding Platte River daughter of our Girl Boss donor. Top 10-15% growth with reasonable calving ease, excellent milk, maternal weaning and docility. A 746 adjusted weaning weight, gained 4 pounds per day and posts a 1,386 pound yearling weight and an ATM designation by RightChoice.



LOT 58 **IRON CREEK A85H** **GGP**

Homo Black II Homo Polled 3/4 SM 1/4 AN
 3/5/2023 H85L ASA# 4260392

TUEL COWMAKER A3032 TJ PLATTE RIVER 370D
BSUM MOST WANTED 117J **IRON CREEK LADY A85H**
 X/L MS 9103G DRAKE MISS Y85A

	CE	BW	WW	YW	ADG	MCE	MILK	MWW	STAY
EPD	14.3	0.1	91.3	141.1	0.31	7.0	28.1	73.5	18.9
Rank	30	45	10	10	25	50	20	10	10
	DOC	CW	YG	MARB	BF	REA	API	TI	
EPD	16.4	26.1	-0.20	0.42	-0.031	0.60	154.0	92.2	
Rank	10	80	60	40	60	70	20	15	
	BW				ADJ. WW				
	77				793				



IRON CREEK A85H Sells as Lot 58.

Another outstanding Most Wanted son out a Platte River daughter from our coming 15 year old shear Force cow, Y85A. This bull has excellent growth (top 10%) and maternal traits with a top 20% API and 15% TI. A 793 pound weaning weight, gained 4.2 pounds per day to post a 1,454 yearling weight. Cutting edge performance genetics.



CCR SPEAK NOW 6178G

Our \$21,000 selection from Cow Camp Ranch in Kansas, Speak Now is a farm favorite for his calves' outstanding looks, calving ease, growth and maternal traits- and their very docile natures. A great breeding bull.



CCR SPEAK NOW 6178G Sire of Lots 56-62.



DRAKE BULL G178L Sells as Lot 59.

LOT

59

DRAKE BULL G178L

Hetero Black II Homo Polled PB SM
 2/16/2023 G178L ASA# 4260381

WS PROCLAMATION E202 TJ PLATTE RIVER 370D
CCR SPEAK NOW 6178G **DRAKE MISS D178G**
 CCR MS 2138 BOLDR 6028D DRAKE MISS N178D

	CE	BW	WW	YW	ADG	MCE	MILK	MWW	STAY		
EPD	14.8	-0.5	70.9	106.3	0.22	8.7	29.5	64.8	16.5		
Rank	15	20	80	75	70	15	10	35	40		
	DOC	CW	YG	MARB	BF	REA	API	TI			
EPD	14.7	27.3	-0.35	0.34	-0.075	0.75	149.4	83.5			
Rank	20	55	70	25	50	80	25	35			
		BW							ADJ. WW		
		84							733		

Top 10% Milk, Top 15% CE and Top 15% MCE



HARLAN BULL F185L Sells as Lot 60.

LOT

60

HARLAN BULL F185L

Homo Black II Homo Polled 3/4 SM 1/4 AN
 1/18/2023 F185L ASA# 4259732

WS PROCLAMATION E202 W/C LOCK DOWN 206Z
CCR SPEAK NOW 6178G **HARLAN MISS D185F**
 CCR MS 2138 BOLDR 6028D DRAKE MISS Z185D

	CE	BW	WW	YW	ADG	MCE	MILK	MWW	STAY		
EPD	16.2	-1.6	68.8	106.2	0.23	10.7	22.2	56.3	10.9		
Rank	15	20	75	75	70	10	70	75	85		
	DOC	CW	YG	MARB	BF	REA	API	TI			
EPD	13.1	19.4	-0.08	0.24	-0.017	0.27	123.5	75.0			
Rank	40	95	90	75	85	99	65	70			
		BW							ADJ. WW		
		72							547		

Here is a moderate easy calving Speak Now bull.

LOT 61 **DRAKE BULL G372L** **GGP**

Homo Black II Homo Polled 5/8 SM 3/8 AN
 2/8/2023 G372L ASA# 4260349

WS PROCLAMATION E202 HOOK'S EQUINOX 15E
CCR SPEAK NOW 6178G **DRAKE MISS Y372G**
 CCR MS 2138 BOLDR 6028D DRAKE MISS W372Y

	CE	BW	WW	YW	ADG	MCE	MILK	MWW	STAY
EPD	13.3	-1.0	76.7	121.2	0.28	7.6	24.7	62.8	14.4
Rank	40	30	45	40	40	40	45	45	55
	DOC	CW	YG	MARB	BF	REA	API	TI	
EPD	12.4	26.2	-0.47	0.17	-0.066	1.16	127.8	79.3	
Rank	50	80	2	85	20	4	60	55	
	BW				ADJ. WW				
	81				712				

Balanced set of EPDs with a 712 lb WW.



DRAKE BULL G372L Sells as Lot 61.

LOT 62 **DRAKE BULL E40L** **GGP**

Homo Black II Homo Polled 5/8 SM 3/8 AN
 3/10/2023 E40L ASA# 4260357

WS PROCLAMATION E202 HOOK'S BASIN 27B
CCR SPEAK NOW 6178G **DRAKE MISS A40E**
 CCR MS 2138 BOLDR 6028D DRAKE MISS U40A

	CE	BW	WW	YW	ADG	MCE	MILK	MWW	STAY
EPD	15.1	-2.5	75.4	118.7	0.27	8.2	24.8	62.2	16.6
Rank	25	15	50	45	45	30	45	50	30
	DOC	CW	YG	MARB	BF	REA	API	TI	
EPD	16.7	26.7	-0.16	0.19	-0.033	0.47	136.2	79.7	
Rank	10	75	70	80	60	85	45	55	
	BW				ADJ. WW				
	70				701				



DRAKE BULL E40L Sells as Lot 62.

Trucking Options

REB Transportation
 Rob Beeler
 (515) 360-1764

Tru Time Logistics
 Evan Bixby
 (319) 559-0167
 evan@trutimelogistics.com



KBHR BACKROADS G014

We purchased Backroads from Keller's Broken Heart Ranch several years ago and he brings outstanding calving ease, docility and marbling, as well as a great "look", to the genetic mix. His heifers are producers, as reflected by his top 1% Stay.



KBHR BACKROADS G014 Sire of Lots 63-66.



DRAKE BULL E76L Sells as Lot 63.

LOT 63 **DRAKE BULL E76L** **GGP**

Homo Black || Homo Polled PB SM
 2/25/2023 E76L ASA# 4260352

KBHR HIGH ROAD E283 CCR COWBOY CUT 5048Z
KBHR BACKROADS G014 **DRAKE MISS B76E**
 KBHR B120 DRAKE RIGHT NOW

	CE	BW	WW	YW	ADG	MCE	MILK	MWW	STAY
EPD	15.8	0.1	70.4	97.5	0.17	8.4	22.5	57.5	18.0
Rank	10	30	80	90	95	15	55	70	25
	DOC	CW	YG	MARB	BF	REA	API	TI	
EPD	18.2	22.7	-0.23	0.43	-0.056	0.46	155.3	83.1	
Rank	3	75	99	15	85	99	15	40	
	BW				ADJ. WW				
	78				735				

This is a good performing bull with a 735 WW and 1355 YW. Good CE in top 10% and API in top 15%.



DRAKE BULL E207L Sells as Lot 64.

LOT 64 **DRAKE BULL E207L** **GGP**

Homo Black || Homo Polled 1/2 SM 1/2 AN
 2/18/2023 E207L ASA# 4260368

KBHR HIGH ROAD E283 SILVEIRAS STYLE 9303
KBHR BACKROADS G014 **DRAKE HERE FOR THE PARTY**
 KBHR B120 DRAKE ELSA 207C

	CE	BW	WW	YW	ADG	MCE	MILK	MWW	STAY
EPD	15.6	0.6	72.3	119.9	0.30	8.9	17.4	53.7	16.9
Rank	20	55	65	45	30	20	95	85	25
	DOC	CW	YG	MARB	BF	REA	API	TI	
EPD	16.5	44.6	-0.06	0.64	-0.007	0.60	155.6	84.4	
Rank	10	25	90	15	90	70	15	35	
	BW				ADJ. WW				
	81				668				

A top SimAngus bull that gained 4.66 lbs/day. With a 1409 YW. His dam is a great Silveiras Style Angus cow going back to the \$25,000 HOTZ Elsa 1207.



LOT 65 **IRON CREEK B3L** **GGP**

Homo Black II Homo Polled 3/4 SM 1/4 AN
 3/12/2023 B3L ASA# 4260387

KBHR HIGH ROAD E283 HOTZ BRILLIANCE 1251
KBHR BACKROADS G014 **DRAKE SUMMER SUNRISE**
 KBHR B120 JSF DREAM BELL

	CE	BW	WW	YW	ADG	MCE	MILK	MWW	STAY
EPD	13.5	1.1	74.1	116.3	0.26	6.7	20.8	57.4	15.1
Rank	40	65	55	50	50	55	80	70	45
	DOC	CW	YG	MARB	BF	REA	API	TI	
EPD	14.5	26.9	-0.23	0.55	-0.037	0.65	144.1	83.2	
Rank	25	75	50	25	60	60	30	40	
BW					ADJ. WW				
81					693				



IRON CREEK B3L Sells as Lot 65.

LOT 66 **IRON CREEK E3L** **GGP**

Homo Black II Homo Polled 3/4 SM 1/4 AN
 3/15/2023 E3L ASA# 4260389

KBHR HIGH ROAD E283 TJ DIESEL 350Z
KBHR BACKROADS G014 **DFC SUNRISE EXCITEMENT**
 KBHR B120 DRAKE SUMMER SUNRISE

	CE	BW	WW	YW	ADG	MCE	MILK	MWW	STAY
EPD	12.6	1.8	81.9	129.3	0.30	6.9	20.6	61.3	17.5
Rank	50	80	30	25	30	50	80	50	20
	DOC	CW	YG	MARB	BF	REA	API	TI	
EPD	18.4	48.7	-0.22	0.38	-0.048	0.82	140.3	82.7	
Rank	4	15	55	45	45	30	40	40	
BW					ADJ. WW				
83					691				



IRON CREEK E3L Sells as Lot x66

A Backroads son with excellent growth, Stay and docility. Gained 4.89 pounds per day to post a 1,473 pound yearling weight. G+ and ATM by RightChoice.



A bull with seedstock potential! Out of a direct daughter of WS Miss Sugar C4, the most accomplished cow in the Simmental breed with numerous sons in bull studs. 12 traits in the top 10% of the breed with a 194 API and 111 TI . 93L posted a weaning weight of 765 and a yearling weight of 1462 and is G+ and ATM under the RightChoice analysis. Pedigree, genomic excellence, personal performance and RightChoice confirmation-the risk is all removed.



IRONCREEK DRAKE BULL J93L Sells as Lot 67.



LCDR MS JETTA 93J Dam of Lot 67.

LOT 67 **IRONCREEK DRAKE BULL J93L** **GGP**

Homo Black || Homo Polled PB SM
 2/26/2023 J93L ASA# 4260370

HOOK'S BEACON 56B W/C FORT KNOX 609F
CLRS GUARDIAN 317G **LCDR MS JETTA 93J**
 CLRS ALWAYS XCELLENT WS MISS SUGAR C4

	CE	BW	WW	YW	ADG	MCE	MILK	MWW	STAY
EPD	13.7	-1.9	91.4	143.4	0.33	7.6	31.8	77.3	19.6
Rank	20	10	10	10	10	25	4	3	10
	DOC	CW	YG	MARB	BF	REA	API	TI	
EPD	6.4	56.0	-0.36	0.85	-0.044	1.38	194.3	110.9	
Rank	95	2	65	1	95	1	1	1	
	BW				ADJ. WW				
	79				765				



LOT 68 **HARLAN BULL JUL** **GGP**

Homo Black || Homo Polled 3/4 SM 3/16 AN 1/32 MA 1/32 MX
 1/17/2023 JUL ASA# 4259729

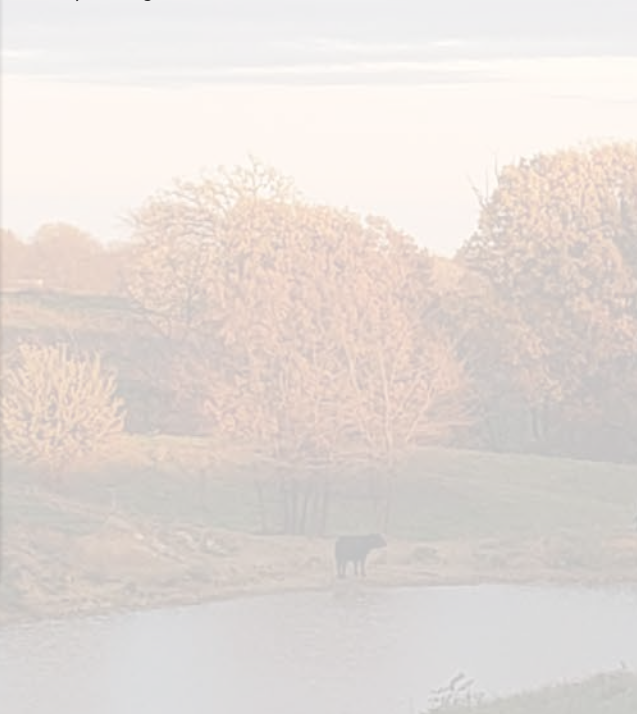
WS PROCLAMATION E202 HARLAN UNBRANDED D50F
KBHR BOLD RULER H152 **HARLAN MISS 10J**
 BAR CK MS X38 106Z DRAKE MISS ICUD

	CE	BW	WW	YW	ADG	MCE	MILK	MWW	STAY
EPD	17.2	-2.1	70.4	109.5	0.24	11.0	20.6	55.6	18.6
Rank	10	15	70	65	65	5	80	80	15
	DOC	CW	YG	MARB	BF	REA	API	TI	
EPD	15.9	31.6	-0.24	0.54	-0.055	0.61	159.3	84.9	
Rank	15	60	45	25	30	65	15	35	
	BW				ADJ. WW				
	76				557				



HARLAN BULL JUL Sells as Lot 68.

An easy calving brockle face Bold Ruler bull.



LOT 69 HARLAN BULL J10L **GGP**

Homo Black II Homo Polled 3/4 SM 1/4 AN
 1/20/2023 J10L ASA# 4259734

WS PROCLAMATION E202 HARLAN UNBRANDED D50F
KBHR BOLD RULER H152 **HARLAN MISS 10J**
 BAR CK MS X38 106Z DRAKE B10

	CE	BW	WW	YW	ADG	MCE	MILK	MWW	STAY
EPD	18.3	-3.1	69.8	102.8	0.21	11.5	23.3	58.0	17.0
Rank	5	10	75	80	85	3	60	70	25
	DOC	CW	YG	MARB	BF	REA	API	TI	
EPD	17.0	32.3	-0.07	0.28	-0.009	0.45	142.7	78.4	
Rank	10	60	90	65	90	90	35	60	
	BW				ADJ. WW				
	79				654				

Here is another calving ease Bold Ruler bull that should be a heifer safe bull. If his calves grow like he did he will make you money there too. He had an ADG of 4.27 lbs. getting him to a yearling weight of 1328 lbs.



HARLAN BULL J10L Sells as Lot 69.

LOT 70 DRAKE BULL J107L **GGP**

Red II Homo Polled PB SM
 2/16/2023 J107L ASA# 4260361

IR IMPERIAL D948 KBHR SNIPER E036
KBHR DUALLY H167 **DRAKE MISS G107J**
 KBHR C078 DRAKE MISS 107G

	CE	BW	WW	YW	ADG	MCE	MILK	MWW	STAY
EPD	17.4	-0.2	78.6	120.7	0.26	10.6	21.9	61.0	14.1
Rank	3	25	45	40	40	3	60	55	65
	DOC	CW	YG	MARB	BF	REA	API	TI	
EPD	16.6	33.9	-0.50	0.65	-0.100	1.10	168.9	96.0	
Rank	10	35	10	3	15	15	10	10	
	BW				ADJ. WW				
	75				645				

Here's a purebred red bull with good numbers. He's in the top 3% for CE, MCE, and Marbling. Top 10% API and TI. 1342 YW. He gained 4.39 lbs/day.



DRAKE BULL J107L Sells as Lot 70.



The Bred Heifers.

Eve is sired by the cow maker Platte River and out of an outstanding Eagle daughter we purchased for \$8,000 from Hook Farms' Fabulous Five several years ago. She is bred to Five Star Jackson and her bull calf will boast 14 EPDs and indexes in the top 35% of the breed, including a 167 API (top 10%) and a TI of 95 (top 10%). Bred-in excellence from an outstanding cow family.



IRON CREEK EVE F26J Sells as Lot 72.



HOOK'S GINGER 87G Dam of Lot 72.

LOT 72 **IRON CREEK EVE F26J**
 Homo Black // Homo Polled PB SM
 12/31/2021 F26J ASA# 4082434
 CCR COWBOY CUT 5048Z HOOK'S EAGLE 6E
TJ PLATTE RIVER 370D **HOOK'S GINGER 87G**
 TJ 43Z HOOK'S DESI 80D

	CE	BW	WW	YW	ADG	MCE	MILK	MWW	STAY
EPD	12.4	0.0	81.6	118.4	0.23	6.1	27.9	68.5	17.3
Rank	35	25	35	45	60	45	20	20	30
	DOC	CW	YG	MARB	BF	REA	API	TI	
EPD	17.1	35.3	-0.29	0.50	-0.047	0.88	158.7	92.3	
Rank	5	30	90	10	95	50	15	15	

Est. Calf EPDs

CE	BW	WW	YW	MCE	MILK	MWW	STAY	DOC	CW	YG	MARB	REA	\$API	\$TI
15.7	-1.0	83.4	123.9	9.3	27.6	69.0	16.8	16.7	36.1	-0.27	0.56	0.88	167.3	95.4

Bred to Five Star Jackson (3947790). Confirmed safe and due 2/10. Confirmed bull calf.

LOT 73 **DRAKE MISS A49K**
 Black // Polled PB SM
 3/30/2022 A49K ASA# 4289354
 KBHR HIGH ROAD E283 CJ SUPERMAN 01S
KBHR BACKROADS G014 **HL MS SUPERMAN A49**
 KBHR B120 KSR 49R

	CE	BW	WW	YW	ADG	MCE	MILK	MWW	STAY
EPD	15.2	-0.1	66.6	95.7	0.18	8.2	21.3	54.4	21.1
Rank	10	25	90	90	90	20	65	85	3
	DOC	CW	YG	MARB	BF	REA	API	TI	
EPD	14.7	24.1	-0.31	0.22	-0.062	0.69	149.2	76.2	
Rank	20	70	85	40	70	90	25	65	

Est. Calf EPDs

CE	BW	WW	YW	MCE	MILK	MWW	STAY	DOC	CW	YG	MARB	REA	\$API	\$TI
15.9	-0.9	83.2	133.7	9.5	25.1	66.4	19.0	17.6	46.5	-0.29	0.36	1.13	162.8	90.7

Bred to Gibbs Essential (3716905). Confirmed safe and due 1/31.



DRAKE MISS A49K Sells as Lot 73.

Around Thanksgiving we made the decision to pick some of our best heifers out of the keeper pen for the sale. A49K, a sweetheart of a female, came right to the top. Bred to Gibbs 9114G "Essential," the calf will be in the top 30% of 15 of the EPD numbers. It is so much fun when we get the phenotype and the numbers to come together like this.



GIBBS ESSENTIAL Service Sire of Lot 73.



IRON CREEK CRYSTAL D126K Sells as Lot x74

LOT 74 **IRON CREEK CRYSTAL D126K**
 Homo Black II Homo Polled 3/4 SM 1/4 AN
 3/2/2022 D126K ASA# 4115094

TJ MAIN EVENT 503B

GW-WBF SUBSTANCE 820Y

TJ TEARDROP 783F

HOOK'S CRYSTAL 1C

TJ MS 38W

HOOK'S UNDERESTIMATED 6U

	CE	BW	WW	YW	ADG	MCE	MILK	MWW	STAY
EPD	12.7	0.5	83.5	130.5	0.29	6.1	21.7	63.2	17.8
Rank	50	55	25	25	35	65	70	45	20

	DOC	CW	YG	MARB	BF	REA	API	TI
EPD	14.7	37.5	-0.29	0.30	-0.064	0.77	139.7	83.5
Rank	25	40	30	60	20	40	40	40

Est. Calf EPDs

CE	BW	WW	YW	MCE	MILK	MWW	STAY	DOC	CW	YG	MARB	REA	\$API	\$TI
15.7	-0.8	84.2	129.6	9.2	24.2	66.0	17.4	15.5	37.5	-0.27	0.46	0.82	163.3	92.9

Bred to Five Star Jackson (3947790). Confirmed safe and due 3/5. Confirmed bull calf.

This heifer will have a bull by Jackson or US Grant. Too close to call. Iron Creek Crystal D126K Bred to US Grant, her Planned Mating EPDs place this called bull calf in the top 35% of 14 traits and indexes including top 15% WW, 20% YW and 15% API (160) and TI (93). Buy a unique breeding investment and get a herd bull as a bonus.

The only opportunity we are aware of in the US to purchase direct daughters of the mother of Eagle! These heifers represent a rare opportunity to acquire a direct daughter of Crystal 1C, the dam of Eagle, the most popular and effective bull in the Simmental breed at doing more things right. Eagle was the breed leader in registrations for several years and remains a popular producer of both bulls and females that thrive throughout the US in a variety of environments. Their sire, Teardrop, was the high selling bull at Triangle J and a popular sire of phenotypically advanced cattle.



F233K Sister to Lot 74.



HOOK'S CRYSTAL 1C Dam of Lot 74.



IRON CREEK CRYSTAL F233K Sells as Lot 75.

LOT 75 **IRON CREEK CRYSTAL F233K**
 Homo Black II Homo Polled 3/4 SM 1/4 AN
 3/4/2022 F233K ASA# 4115096

TJ MAIN EVENT 503B GW-WBF SUBSTANCE 820Y
TJ TEARDROP 783F **HOOK'S CRYSTAL 1C**
 TJ MS 38W HOOK'S UNDERESTIMATED 6U

	CE	BW	WW	YW	ADG	MCE	MILK	MWW	STAY
EPD	10.4	4.0	95.0	153.5	0.37	4.7	21.7	69.0	14.2
Rank	80	99	4	3	4	85	70	20	55

	DOC	CW	YG	MARB	BF	REA	API	TI
EPD	14.9	48.2	-0.26	0.31	-0.071	0.77	129.4	86.5
Rank	20	15	40	60	10	40	55	30

Est. Calf EPDs

	CE	BW	WW	YW	MCE	MILK	MWW	STAY	DOC	CW	YG	MARB	REA	\$API	\$TI
	12.7	1.2	92.4	144.4	7.1	25.2	71.1	16.3	11.5	45.5	-0.26	0.45	0.86	155.5	94.5

Bred to HL US Grant (3866295). Confirmed safe and due 3/15. Confirmed bull calf.
 Iron Creek Crystal F233K . Bred to US Grant her bull calf should, based upon Planned Mating calculations, possess a touch more growth, with EPDs in the top 10% for WW and YW, 15% ADG and MWW and a top 15% API of 156 and 10% TI at 95. A truly unique opportunity.



HOOK'S CRYSTAL 1C Dam of Lot 75.



D126K Sister of Lot 75.

Sired by the power bull TJ Bonafide whose WW and YW EPDs are both in the top 1% of the breed. Dam is sired by W/C Relentless. Sire of countless champions at all big and little shows across the country. Bred to Revolution whose calves were the rage across the country in the last year. The future of the bull calf F29K is carrying is unlimited!



DRAKE MISS F29K Sells as Lot 76.



KBHR Revolution Service sire of Lot 76.

LOT 76 **DRAKE MISS F29K**
 Black // Polled 5/8 SM 3/8 AN
 3/28/2022 F29K ASA# 4289339

HOOK'S EAGLE 6E W/C RELENTLESS 32C
TJ BONAFIDE 647H **DRAKE MISS U29F**
 TJ 23D DRAKE MISS U29X

	CE	BW	WW	YW	ADG	MCE	MILK	MWW	STAY
EPD	13.6	0.5	85.2	127.1	0.26	5.6	25.3	67.7	13.4
Rank	40	55	20	30	50	70	40	25	65
	DOC	CW	YG	MARB	BF	REA	API	TI	
EPD	13.7	30.6	-0.31	0.31	-0.055	0.81	132.3	85.1	
Rank	35	65	25	60	30	30	50	35	

Est. Calf EPDs

CE	BW	WW	YW	MCE	MILK	MWW	STAY	DOC	CW	YG	MARB	REA	\$API	\$TI
13.2	0.9	95.9	146.4	6.7	26.3	74.0	16.6	16.2	47.3	-0.30	0.40	1.02	156.8	96.4

Bred to KBHR Revolution (3789458). Confirmed safe and due 1/29. Confirmed bull calf.

LOT 77 **DRAKE MISS H21K**
 Black // Polled 3/4 SM 1/4 AN
 2/25/2022 H21K ASA# 4289330

RC XCEED 063D HOOK'S BEACON 56B
TJ HANDYMAN 436G **DRAKE MISS YF21H**
 TJ 409E DRAKE MISS Y21F

	CE	BW	WW	YW	ADG	MCE	MILK	MWW	STAY
EPD	17.1	-2.3	72.6	110.9	0.24	10.1	30.4	66.5	15.2
Rank	10	15	60	65	65	10	10	30	45
	DOC	CW	YG	MARB	BF	REA	API	TI	
EPD	11.9	34.8	-0.16	0.63	-0.025	0.64	157.7	89.1	
Rank	60	50	70	15	70	60	15	20	

Est. Calf EPDs

CE	BW	WW	YW	MCE	MILK	MWW	STAY	DOC	CW	YG	MARB	REA	\$API	\$TI
16.0	-2.0	81.2	123.1	9.8	29.5	69.9	16.8	10.0	38.8	-0.21	0.61	0.80	169.6	95.9

Bred to HL US Grant (3866295). Confirmed safe and due 2/18. Confirmed bull calf.



DRAKE MISS H21K Sells as Lot 77.

Love these "Handyman" heifers! Good numbers and a great look. Believe they will be outstanding cows.



DRAKE MISS E37K Sells as Lot 78.

LOT 78 DRAKE MISS E37K
 Black // Polled PB SM
 3/3/2022 E37K ASA# 4289343

CCR COWBOY CUT 5048Z ELM-MOUND/GS STANDSALONE
TJ PLATTE RIVER 370D **DRAKE MISS 37E**
 TJ 43Z DRAKE MISS Y372A

	CE	BW	WW	YW	ADG	MCE	MILK	MWW	STAY
EPD	12.9	0.6	71.0	98.7	0.17	5.9	22.7	57.9	14.9
Rank	30	35	80	90	95	50	55	70	60

	DOC	CW	YG	MARB	BF	REA	API	TI
EPD	16.3	19.6	-0.31	0.24	-0.059	0.65	134.3	78.0
Rank	10	85	85	35	85	95	45	60

Est. Calf EPDs

	CE	BW	WW	YW	MCE	MILK	MWW	STAY	DOC	CW	YG	MARB	REA	\$API	\$TI
	14.2	-0.6	79.0	118.7	7.7	26.6	65.8	17.7	17.9	33.2	-0.32	0.60	0.80	167.4	93.3

Bred to HA Knockout (4040478). Confirmed safe and due 2/10. Confirmed bull calf.
 A Platte River heifer bred to "Knockout." You will be hearing a lot from Knockout in the coming years. He was our pick of the bulls at the "Bred for Balance" sale last Spring.



DRAKE MISS E181K Sells as Lot 79.

LOT 79 DRAKE MISS E181K
 Black // Polled 3/4 SM 1/4 AN
 2/21/2022 E181K ASA# 4289350

CCR COWBOY CUT 5048Z O C C MISSING LINK 830M
TJ PLATTE RIVER 370D **DRAKE MISS B181E**
 TJ 43Z DRAKE MISS W181B

	CE	BW	WW	YW	ADG	MCE	MILK	MWW	STAY
EPD	13.8	-0.1	66.2	96.3	0.19	4.9	24.5	57.6	15.6
Rank	35	45	85	90	95	80	45	70	40

	DOC	CW	YG	MARB	BF	REA	API	TI
EPD	15.3	22.1	-0.14	0.29	-0.022	0.44	127.9	72.6
Rank	20	90	75	65	70	90	60	80

Est. Calf EPDs

	CE	BW	WW	YW	MCE	MILK	MWW	STAY	DOC	CW	YG	MARB	REA	\$API	\$TI
	16.4	-1.1	75.7	112.8	8.7	25.9	63.6	16.0	15.8	29.5	-0.20	0.46	0.66	156.0	87.2

Bred to Five Star Jackson (3947790). Confirmed safe and due 2/10. Confirmed heifer calf.
 This sweet gal could have a great Jackson heifer!



DRAKE MISS G34K Sells as Lot 80.

LOT 80 DRAKE MISS G34K
 Black // Polled PB SM
 3/28/2022 G34K ASA# 4289351

WS PROCLAMATION E202 TJ PLATTE RIVER 370D
CCR SPEAK NOW 6178G **DRAKE MISS D34G**
 CCR MS 2138 BOLDR 6028D DRAKE MISS Z34D

	CE	BW	WW	YW	ADG	MCE	MILK	MWW	STAY
EPD	13.0	0.9	81.4	125.1	0.27	7.5	26.1	66.5	15.0
Rank	30	45	35	30	35	25	30	30	55

	DOC	CW	YG	MARB	BF	REA	API	TI
EPD	16.3	36.6	-0.30	0.28	-0.057	0.85	142.4	85.9
Rank	10	25	90	30	85	60	30	30

Est. Calf EPDs

	CE	BW	WW	YW	MCE	MILK	MWW	STAY	DOC	CW	YG	MARB	REA	\$API	\$TI
	16.0	-0.6	83.3	127.2	10.0	26.7	68.0	15.7	16.3	36.7	-0.28	0.45	0.86	159.4	92.3

Bred to Five Star Jackson (3947790). Confirmed safe and due 2/12. Confirmed heifer calf.
 Will have an early Jackson heifer with good EPDs. You can see how these Jackson bulls look, you should see his heifers!

LOT 81 **DRAKE MISS D390K**
 Black II Polled 1/2 SM 1/2 AN
 4/19/2022 D390K ASA# 4289352

TJ FRANCHISE 451D SANDEEN RAINMAKER 2007
TJ ROUGH COUNTRY 219G **DRAKE MISS K390D**
 TJ MS 38W GW MISS HIGH DENSITY 390

CE	BW	WW	YW	ADG	MCE	MILK	MWW	STAY
11.2	1.0	58.8	96.0	0.23	4.1	26.2	55.7	15.8
70	65	95	90	70	90	35	80	35

DOC	CW	YG	MARB	BF	REA	API	TI
15.1	19.8	-0.11	0.33	-0.013	0.40	124.0	68.3
20	90	85	55	85	95	65	90

Est. Calf EPDs

CE	BW	WW	YW	MCE	MILK	MWW	STAY	DOC	CW	YG	MARB	REA	\$API	\$TI
13.1	-0.3	74.3	115.7	6.8	27.4	64.5	17.1	11.6	31.3	-0.18	0.46	0.68	148.7	83.7

Bred to HL US Grant (3866295). Confirmed safe and due 3/25.
 Bred to be a low input, high output brood cow! The trouble-free kind that will have a nice US Grant calf.



DRAKE MISS D390K Sells as Lot 81.

LOT 82 **DRAKE MISS A75K**
 Black II Polled PB SM
 2/6/2022 A75K ASA# 4289353

WS PROCLAMATION E202 ELM-MOUND/GS STANDSALONE
CCR SPEAK NOW 6178G **DRAKE GLORIA X75A**
 CCR MS 2138 BOLDR 6028D LLSF GLORY GIRL TOO X75

CE	BW	WW	YW	ADG	MCE	MILK	MWW	STAY
14.3	0.0	74.1	113.2	0.24	7.5	20.6	57.4	13.2
15	25	65	55	55	25	70	70	75

DOC	CW	YG	MARB	BF	REA	API	TI
14.2	22.8	-0.38	0.07	-0.077	0.77	128.1	77.4
20	75	60	75	50	75	55	60

Est. Calf EPDs

CE	BW	WW	YW	MCE	MILK	MWW	STAY	DOC	CW	YG	MARB	REA	\$API	\$TI
16.7	-1.0	79.6	121.3	10.0	23.9	63.5	14.8	15.3	29.8	-0.32	0.35	0.82	152.4	88.1

Bred to Five Star Jackson (3947790). Confirmed safe and due 1/30.
 A beautiful heifer that came right out of our keeper pen. We know with the Jackson calves we have that A75K's kind will produce the great ones. A75K is sired by "CCR Speak Now." The top selling bull at \$22,000 in the Cow Camp Ranch sale. He adds a little more fancy along with good EPDs. Think you will like this one!



DRAKE MISS A75K Sells as Lot 82.

LOT 83 **IRON CREEK G28K**
 Black II Homo Polled 5/8 SM 3/8 AN
 3/15/2022 G28K ASA# 4211324

TJ FRANCHISE 451D TJ DIPLOMAT 294D
TJ ROUGH COUNTRY 219G **IRON CREEK IRON LADY C28G**
 TJ MS 38W HRM MS SPARTAN D651

CE	BW	WW	YW	ADG	MCE	MILK	MWW	STAY
10.5	1.6	71.7	118.1	0.29	4.2	28.3	63.9	14.7
80	75	65	50	35	90	20	40	50

DOC	CW	YG	MARB	BF	REA	API	TI
14.8	26.5	-0.14	0.44	-0.020	0.51	131.9	78.5
25	75	75	40	85	80	50	60

Est. Calf EPDs

CE	BW	WW	YW	MCE	MILK	MWW	STAY	DOC	CW	YG	MARB	REA	\$API	\$TI
14.6	-0.2	78.2	123.4	8.2	27.6	66.5	15.9	15.7	32.1	-0.20	0.53	0.69	156.7	89.3

Bred to Five Star Jackson (3947790). Confirmed safe and due 3/5. Confirmed bull calf.
 This heifer will have a bull by Jackson or US Grant. Too close to call.



IRON CREEK G28K Sells as Lot 83.



DRAKE MISS E7K Sells as Lot 84.

LOT 84 **DRAKE MISS E7K**
 Black II Polled PB SM
 3/6/2022 E7K ASA# 4289331

CCR COWBOY CUT 5048Z DRAKE HARD TRUTH
TJ PLATTE RIVER 370D **DRAKE MISS L7Z**
 TJ 43Z DRAKE MISS Y7L

	CE	BW	WW	YW	ADG	MCE	MILK	MWW	STAY
EPD	11.0	1.5	71.6	101.5	0.19	6.9	28.1	63.6	15.9
Rank	55	55	75	85	90	35	15	40	45

	DOC	CW	YG	MARB	BF	REA	API	TI
EPD	12.7	28.1	-0.28	0.25	-0.057	0.66	133.7	77.9
Rank	35	55	90	35	85	95	45	60

Est. Calf EPDs

	CE	BW	WW	YW	MCE	MILK	MWW	STAY	DOC	CW	YG	MARB	REA	\$API	\$TI
	13.0	-0.1	80.7	118.4	8.2	28.4	68.4	17.1	10.4	35.4	-0.27	0.42	0.81	153.7	88.8

Bred to HL US Grant (3866295). Confirmed safe and due 2/26. Confirmed heifer calf.
 This "Platte River" heifer should produce a calf with great EPDs with "US Grant" as the sire.



DRAKE MISS G364K Sells as Lot 85.

LOT 85 **DRAKE MISS G364K**
 Black II Polled PB SM
 3/21/2022 G364K ASA# 4289332

TJ FRANCHISE 451D TJ PLATTE RIVER 370D
TJ ROUGH COUNTRY 219G **DRAKE MISS D364G**
 TJ MS 38W DRAKE MISS Z364D

	CE	BW	WW	YW	ADG	MCE	MILK	MWW	STAY
EPD	11.0	2.2	72.2	112.3	0.25	4.1	28.6	64.4	15.4
Rank	55	70	75	60	45	80	15	40	55

	DOC	CW	YG	MARB	BF	REA	API	TI
EPD	18.4	24.1	-0.22	0.21	-0.043	0.55	130.9	76.8
Rank	2	70	99	40	95	99	50	65

Est. Calf EPDs

	CE	BW	WW	YW	MCE	MILK	MWW	STAY	DOC	CW	YG	MARB	REA	\$API	\$TI
	13.0	0.3	81.0	123.8	6.8	28.6	68.8	16.9	13.2	33.4	-0.24	0.40	0.75	152.4	88.2

Bred to HL US Grant (3866295). Confirmed safe and due 3/20. Confirmed heifer calf.
 Maternal sister to the powerful G364L bull in this sale. With the famous TJ MS 38W and Platte River close up in her pedigree, she will work.



DRAKE MISS DH17K Sells as Lot 86.

LOT 86 **DRAKE MISS DH17K**
 Black II Polled PB SM
 2/3/2022 DH17K ASA# 4289335

HOOK'S BLACK HAWK 50B TJ PLATTE RIVER 370D
HOOK'S EAGLE 6E **DRAKE MISS D17H**
 HOOK'S CRYSTAL 1C DRAKE MISS T17D

	CE	BW	WW	YW	ADG	MCE	MILK	MWW	STAY
EPD	12.9	0.3	91.4	138.4	0.29	4.9	24.6	70.1	15.8
Rank	30	30	10	15	20	70	40	15	50

	DOC	CW	YG	MARB	BF	REA	API	TI
EPD	17.9	42.5	-0.35	0.46	-0.051	1.12	159.2	97.3
Rank	3	15	70	10	85	10	15	5

Est. Calf EPDs

	CE	BW	WW	YW	MCE	MILK	MWW	STAY	DOC	CW	YG	MARB	REA	\$API	\$TI
	16.0	-0.9	88.3	133.9	8.7	25.9	69.8	16.1	17.1	39.7	-0.30	0.54	1.00	167.6	97.9

Bred to Five Star Jackson (3947790). Confirmed safe and due 1/30. Confirmed bull calf.
 An Eagle daughter with excellent EPDs across the board. Her Jackson bull calf could pay for this deal!

LOT 87 DRAKE MISS YC30K
 Black II Polled 3/4 SM 1/4 AN
 3/9/2022 YC30K ASA# 4289336

KBHR HIGH ROAD E283 TJ DIESEL 350Z
KBHR BACKROADS G014 DRAKE MISS Y30C
 KBHR B120 LTS COPYRIGHT

	CE	BW	WW	YW	ADG	MCE	MILK	MWW	STAY						
EPD	15.2	-0.2	76.8	116.5	0.25	8.7	19.2	57.4	18.8						
Rank	25	40	45	50	60	25	90	70	10						
	DOC	CW	YG	MARB	BF	REA	API	TI							
EPD	15.6	31.7	-0.23	0.32	-0.041	0.68	143.9	80.5							
Rank	15	60	50	55	45	55	30	50							
Est. Calf EPDs															
	CE	BW	WW	YW	MCE	MILK	MWW	STAY	DOC	CW	YG	MARB	REA	\$API	\$TI
	17.1	-1.1	81.0	122.9	10.6	23.2	63.5	17.6	16.0	34.3	-0.24	0.47	0.78	164.8	91.4

Bred to Five Star Jackson (3947790). Confirmed safe and due 2/10. Confirmed heifer calf.
 A heifer carrying a Jackson heifer that should be an eye popper.



DRAKE MISS YC30K Sells as Lot 87.

LOT 88 DRAKE MISS YE266K
 Black II Polled PB SM
 2/23/2022 YE266K ASA# 4289344

CCR COWBOY CUT 5048Z W/C RELENTLESS 32C
TJ PLATTE RIVER 370D DRAKE MISS Y266E
 TJ 43Z DRAKE MISS P266Y

	CE	BW	WW	YW	ADG	MCE	MILK	MWW	STAY						
EPD	11.5	1.6	75.8	104.5	0.18	5.0	24.3	62.0	16.0						
Rank	50	60	60	75	90	65	40	50	45						
	DOC	CW	YG	MARB	BF	REA	API	TI							
EPD	15.8	25.5	-0.32	0.32	-0.058	0.76	139.3	81.7							
Rank	10	65	80	25	85	80	35	45							
Est. Calf EPDs															
	CE	BW	WW	YW	MCE	MILK	MWW	STAY	DOC	CW	YG	MARB	REA	\$API	\$TI
	13.5	-0.1	81.4	121.6	7.2	27.4	67.9	18.3	17.6	36.2	-0.32	0.64	0.85	169.8	95.1

Bred to HA Knockout (4040478). Confirmed safe and due 2/16. Confirmed heifer calf.
 A Platte River out of a Relentless dam bred to Knockout... about as good as it gets!



TJ PLATTE RIVER 370D Sire of Lot 88.

LOT 89 DRAKE MISS Z185K
 Black II Polled 3/4 SM 1/4 AN
 3/15/2022 Z185K ASA# 4289345

HOOK'S EAGLE 6E DRAKE HARD TRUTH
TJ BONAFIDE 647H DRAKE MISS K185Z
 TJ 23D PVF LEAH 0185K

	CE	BW	WW	YW	ADG	MCE	MILK	MWW	STAY						
EPD	13.1	0.9	82.8	126.1	0.27	8.1	24.7	65.9	13.7						
Rank	45	60	25	30	45	30	45	30	60						
	DOC	CW	YG	MARB	BF	REA	API	TI							
EPD	12.3	30.2	-0.39	0.16	-0.077	0.87	123.6	79.9							
Rank	50	65	10	85	10	25	65	55							
Est. Calf EPDs															
	CE	BW	WW	YW	MCE	MILK	MWW	STAY	DOC	CW	YG	MARB	REA	\$API	\$TI
	14.0	-0.4	86.3	130.7	8.8	26.7	69.6	16.0	10.2	36.5	-0.32	0.37	0.91	153.9	91.8

Bred to HL US Grant (3866295). Confirmed safe and due 3/4. Confirmed bull calf.
 A low maintenance female that will work anywhere. US Grant bull calf will be a good one!



DRAKE MISS Z185K Sells as Lot 89.

LOT 90 DRAKE MISS D185K
 Hetero Black // Polled 3/4 SM 1/8 AN 1/8 HP
 3/14/2022 D185K ASA# 4289347

WS PROCLAMATION E202 SS/PRS CHASIN TAIL 18A
CCR SPEAK NOW 6178G **DRAKE SIM-BLAZE X185D**
 CCR MS 2138 BOLDR 6028D DRAKE MISS SIMBLAZE 185X

CE	BW	WW	YW	ADG	MCE	MILK	MWW	STAY
12.4	1.1	75.5	118.1	0.27	8.0	23.7	60.8	14.0
Rank	55	65	50	45	35	55	55	55
DOC	CW	YG	MARB	BF	REA	API	TI	
14.0	31.9	-0.33	0.19	-0.061	0.84	121.5	75.6	
Rank	30	60	20	80	20	70	70	

CE	BW	WW	YW	MCE	MILK	MWW	STAY	DOC	CW	YG	MARB	REA	\$API	\$TI
13.4	-0.6	87.1	136.2	6.3	22.7	65.8	14.4	16.8	37.6	-0.37	0.40	1.10	152.9	93.1

Bred to Hook's Eagle (3253742). Confirmed safe and due 2/16. Confirmed bull calf.
 Look for an Eagle bull out of this gal. Should be a good nick!



DRAKE MISS YD61K Sells as Lot 93.

LOT 93 DRAKE MISS YD61K
 Black // Polled PB SM
 12/10/2021 YD61J ASA# 4289346

CCR COWBOY CUT 5048Z TJ DIESEL 350Z
TJ PLATTE RIVER 370D **DRAKE MISS 61D**
 TJ 43Z DRAKE LADY SADIE 361U

CE	BW	WW	YW	ADG	MCE	MILK	MWW	STAY
12.0	1.4	84.7	124.3	0.25	6.0	24.0	66.1	17.6
Rank	40	55	25	30	45	50	30	30
DOC	CW	YG	MARB	BF	REA	API	TI	
15.9	38.7	-0.21	0.35	-0.036	0.76	149.5	88.1	
Rank	10	20	99	20	99	80	25	

CE	BW	WW	YW	MCE	MILK	MWW	STAY	DOC	CW	YG	MARB	REA	\$API	\$TI
13.5	-0.1	87.2	129.8	7.8	26.3	69.7	18.0	12.0	40.7	-0.23	0.47	0.86	161.6	93.8

Bred to HL US Grant (3866295). Confirmed safe and due 3/15. Confirmed heifer calf.
 A beast of a heifer with a 150 API. Her heifer by US Grant will be good with strong numbers!

LOT 91 DRAKE MISS C1K
 Black // Polled PB SM
 4/6/2022 C1K ASA# 4289348

CCR COWBOY CUT 5048Z SS/PRS CHASIN TAIL 18A
TJ PLATTE RIVER 370D **DRAKE JORDIE**
 TJ 43Z DRAKE MISS MNS1Z

CE	BW	WW	YW	ADG	MCE	MILK	MWW	STAY
11.3	1.4	75.3	110.5	0.22	5.6	30.1	67.5	14.2
Rank	50	55	60	65	70	55	10	25
DOC	CW	YG	MARB	BF	REA	API	TI	
16.0	30.2	-0.23	0.35	-0.048	0.60	138.1	83.0	
Rank	10	45	99	20	95	40	40	

CE	BW	WW	YW	MCE	MILK	MWW	STAY	DOC	CW	YG	MARB	REA	\$API	\$TI
13.1	-0.1	82.5	122.9	7.6	29.4	70.4	16.3	12.0	36.5	-0.24	0.47	0.78	155.4	91.0

Bred to HL US Grant (3866295). Confirmed safe and due 3/16. Confirmed heifer calf.
 Her heifer by US Grant will be a keeper for sure. She'll come equipped with both looks and numbers.

LOT 92 DRAKE MISS B92G
 Black // Polled PB SM
 2/26/2022 G92K ASA# 4289355

TJ FRANCHISE 451D TJ PLATTE RIVER 370D
TJ ROUGH COUNTRY 219G **DRAKE MISS B92G**
 TJ MS 38W DRAKE MISS Z92B

CE	BW	WW	YW	ADG	MCE	MILK	MWW	STAY
11.3	1.7	67.2	102.3	0.22	4.0	26.8	60.2	15.0
Rank	50	60	90	80	70	85	25	60
DOC	CW	YG	MARB	BF	REA	API	TI	
17.7	20.4	-0.23	0.22	-0.040	0.56	129.3	74.3	
Rank	3	80	99	40	99	55	75	

CE	BW	WW	YW	MCE	MILK	MWW	STAY	DOC	CW	YG	MARB	REA	\$API	\$TI
13.4	0.0	77.1	120.5	6.7	28.6	67.0	17.8	18.6	33.6	-0.28	0.59	0.75	164.4	91.2

Bred to HA Knockout (4040478). Confirmed safe and due 3/7. Confirmed heifer calf.
 We believe the sire of her calf is going to be heard from a lot in the future. He is the right kind for the time with a 202 API.

LOT 94 IRON CREEK R3BK
 Black // Polled 3/4 SM 1/4 AN
 3/14/2022 R3BK ASA# 4211311

CCR COWBOY CUT 5048Z HOTZ BRILLIANCE 1251
TJ PLATTE RIVER 370D **DRAKE SUMMER SUNRISE**
 TJ 43Z JSF DREAM BELL

CE	BW	WW	YW	ADG	MCE	MILK	MWW	STAY
11.8	1.6	77.4	115.3	0.24	5.6	26.2	64.4	15.3
Rank	60	75	45	55	65	70	35	45
DOC	CW	YG	MARB	BF	REA	API	TI	
16.3	32.1	-0.16	0.40	-0.030	0.56	132.6	80.3	
Rank	15	60	70	45	70	50	50	

CE	BW	WW	YW	MCE	MILK	MWW	STAY	DOC	CW	YG	MARB	REA	\$API	\$TI
13.6	-0.1	82.2	127.0	7.5	28.3	69.1	17.9	17.9	39.5	-0.24	0.68	0.75	168.8	95.3

Bred to HA Knockout (4040478). Confirmed safe and due 2/15. Confirmed heifer calf.

LOT 95 IRON CREEK C17K1
 Black II Polled 3/4 SM 1/4 AN
 3/2/2022 C17K1 ASA# 4211313

CCR COWBOY CUT 5048Z SANDEEN RAINMAKER 2007
TJ PLATTE RIVER 370D **DFC MISS A17C**
 TJ 43Z DRAKE MISS Y17A

CE	BW	WW	YW	ADG	MCE	MILK	MWW	STAY
12.8	0.5	75.2	110.4	0.22	6.2	29.0	66.8	17.9
50	55	50	65	80	60	15	25	15

DOC	CW	YG	MARB	BF	REA	API	TI
17.1	31.3	-0.16	0.46	-0.022	0.63	143.5	82.3
10	60	70	35	70	65	35	45

EPD Rank
 Est. Calf EPDs

CE	BW	WW	YW	MCE	MILK	MWW	STAY	DOC	CW	YG	MARB	REA	\$API	\$TI
13.9	-0.6	82.5	122.9	7.9	28.8	70.0	18.1	12.6	37.0	-0.21	0.52	0.79	160.8	91.7

Bred to HL US Grant (3866295). Confirmed safe and due 3/8. Confirmed bull calf.



TJ PLATTE RIVER 370D Sire of Lots 91, 93-96, 98.

LOT 96 IRON CREEK C17K2
 Black II Polled 3/4 SM 1/4 AN
 3/2/2022 C17K2 ASA# 4211314

CCR COWBOY CUT 5048Z SANDEEN RAINMAKER 2007
TJ PLATTE RIVER 370D **DFC MISS A17C**
 TJ 43Z DRAKE MISS Y17A

CE	BW	WW	YW	ADG	MCE	MILK	MWW	STAY
12.8	0.5	75.2	110.4	0.22	6.2	29.0	66.8	17.9
50	55	50	65	80	60	15	25	15

DOC	CW	YG	MARB	BF	REA	API	TI
17.1	31.3	-0.16	0.46	-0.022	0.63	143.5	82.3
10	60	70	35	70	65	35	45

EPD Rank
 Est. Calf EPDs

CE	BW	WW	YW	MCE	MILK	MWW	STAY	DOC	CW	YG	MARB	REA	\$API	\$TI
13.9	-0.6	82.5	122.9	7.9	28.8	70.0	18.1	12.6	37.0	-0.21	0.52	0.79	160.8	91.7

Bred to HL US Grant (3866295). Confirmed safe and due 3/8. Confirmed heifer calf.

LOT 97 IRON CREEK 19K
 Black II Polled 3/4 SM 1/4 AN
 3/13/2022 F19K ASA# 4249590

HOOK'S BLACK HAWK 50B HOOK'S BEACON 56B
HOOK'S EAGLE 6E **IRON CREEK MISS C19F**
 HOOK'S CRYSTAL 1C IRON CREEK MISS AX19C

CE	BW	WW	YW	ADG	MCE	MILK	MWW	STAY
15.3	-2.4	90.5	142.2	0.32	7.3	24.5	69.6	16.1
20	15	10	10	20	45	45	20	35

DOC	CW	YG	MARB	BF	REA	API	TI
16.3	39.4	-0.32	0.56	-0.032	1.15	162.5	98.7
15	35	25	25	60	4	10	4

EPD Rank
 Est. Calf EPDs

CE	BW	WW	YW	MCE	MILK	MWW	STAY	DOC	CW	YG	MARB	REA	\$API	\$TI
17.2	-2.2	87.8	135.8	9.9	25.9	69.6	16.2	16.3	38.1	-0.29	0.59	1.01	174.3	100.5

Bred to Five Star Jackson (3947790). Confirmed safe and due 2/10.

One of the best females Iron Creek has sold to date- an Eagle daughter that traces back to Beacon and Premium Beef- genetic excellence running deep. 19K has 13 EPDs and indexes in the top 25% of the breed-elite balance in a female. She is bred early to Five Star Jackson and the calf, due in early February, will have Planned Mating EPDs in the top 35% of 15 traits and indexes including top 3% calving ease, 20% ADG, 1% maternal calving ease, 20% milk and maternal weaning weight, 5% marbling, 4% API (172) and 5% TI (97). A two-for-one extraordinary genetic package.



TJ WAR PAINT Service sire of Lot 98.

LOT 98 IRON CREEK E410K
 Black II Polled 1/2 SM 1/2 CS
 4/11/2022 E410K ASA# 4289369

CCR COWBOY CUT 5048Z
TJ PLATTE RIVER 370D **IRON CREEK C410E**
 TJ 43Z

CE	BW	WW	YW	ADG	MCE	MILK	MWW	STAY
10.9	3.3	81.8	115.3	0.21	5.6	27.0	67.7	16.1
75	95	30	55	85	70	25	25	35

DOC	CW	YG	MARB	BF	REA	API	TI
14.1	22.1	-0.29	0.25	-0.064	0.57	123.1	77.4
30	90	30	70	20	75	65	60

EPD Rank
 Est. Calf EPDs

CE	BW	WW	YW	MCE	MILK	MWW	STAY	DOC	CW	YG	MARB	REA	\$API	\$TI
9.3	2.0	87.1	129.0	4.0	33.6	77.0	18.0	15.3	31.3	-0.16	0.37	0.58	144.4	87.6

Bred to TJ War Paint (3910125). Confirmed safe and due 2/10. Confirmed heifer calf.



IRON CREEK 24K Sells as Lot 99.

LOT 99 IRON CREEK 24K
 Black // Polled 3/4 SM 1/4 AN
 3/2/2022 24K ASA# 4289367

CCR COWBOY CUT 5048Z S A V FINAL ANSWER 0035
TJ PLATTE RIVER 370D **SFS ROSALIE XA05**
 TJ 43Z SFS ROSALIE Y31

	CE	BW	WW	YW	ADG	MCE	MILK	MWW	STAY
EPD	12.6	0.5	79.9	118.4	0.24	7.7	28.0	67.7	18.0
Rank	50	55	35	45	65	35	20	25	15

	DOC	CW	YG	MARB	BF	REA	API	TI
EPD	14.1	37.3	-0.10	0.39	-0.019	0.53	141.1	82.9
Rank	30	45	85	45	85	80	35	40

Est. Calf EPDs

	CE	BW	WW	YW	MCE	MILK	MWW	STAY	DOC	CW	YG	MARB	REA	\$API	\$TI
	15.8	-0.8	82.5	123.9	10.1	27.6	68.6	17.2	15.2	37.1	-0.18	0.51	0.70	162.6	92.3

Bred to Five Star Jackson (3947790). Confirmed safe and due 2/10. Confirmed bull calf.



IRON CREEK H85K Sells as Lot 100.

LOT 100 IRON CREEK H85K
 Black // Polled 3/4 SM 1/4 AN
 2/17/2022 H85K ASA# 4289370

RC XCEED 063D TJ PLATTE RIVER 370D
TJ HANDYMAN 436G **IRON CREEK LADY A85H**
 TJ 409E DRAKE MISS Y85A

	CE	BW	WW	YW	ADG	MCE	MILK	MWW	STAY
EPD	15.4	-0.9	78.2	119.2	0.26	8.6	32.0	70.9	16.7
Rank	20	30	40	45	50	25	5	15	30

	DOC	CW	YG	MARB	BF	REA	API	TI
EPD	14.9	33.1	-0.08	0.66	-0.019	0.41	159.7	91.3
Rank	20	55	90	15	85	90	15	15

Est. Calf EPDs

	CE	BW	WW	YW	MCE	MILK	MWW	STAY	DOC	CW	YG	MARB	REA	\$API	\$TI
	17.1	-1.5	81.5	123.9	10.5	29.5	70.0	16.6	15.6	34.9	-0.17	0.64	0.63	171.4	96.2

Bred to Five Star Jackson (3947790). Confirmed safe and due 3/5. Confirmed heifer calf.
 This heifer will have a heifer by Jackson or US Grant. Too close to call.



IRON CREEK FRANCHISE 220J Sells as Lot 101.

LOT 101 IRON CREEK FRANCHISE 220J
 Homo Black // Homo Polled 3/4 SM 1/4 AN
 12/12/2021 220J ASA# 4291608

CCR COWBOY CUT 5048Z HOOK'S BEACON 568
TJ FRANCHISE 451D **KBHR MATRON OF HONOR F202**
 TJ MISS NET WORTH U11 BAR CK MS X38 106Z

	CE	BW	WW	YW	ADG	MCE	MILK	MWW	STAY
EPD	13.1	0.9	80.2	124.6	0.28	6.4	24.8	64.8	15.9
Rank	45	60	35	35	40	60	45	35	35

	DOC	CW	YG	MARB	BF	REA	API	TI
EPD	15.1	34.9	-0.17	0.58	-0.015	0.74	154.4	89.1
Rank	20	50	65	20	85	45	20	20

Est. Calf EPDs

	CE	BW	WW	YW	MCE	MILK	MWW	STAY	DOC	CW	YG	MARB	REA	\$API	\$TI
	16.1	-0.6	82.7	127.0	9.5	26.0	67.2	16.1	15.7	35.9	-0.21	0.60	0.81	166.2	94.6

Bred to Five Star Jackson (3947790). Confirmed safe and due 2/10. Confirmed bull calf.
 To date we have retained every Matron female born in our herd- they are outstanding mothers with excellent instincts and great producers. This Franchise daughter is very attractive and carries the service of Five Star Jackson with a bull to be born in early February! That bull calf, by Planned Mating calculations, will be in the top 15% for calving ease, 25% WW, 15% maternal calving ease, with a 166 (top 10%) API and 95 (top 10%) TI. This calf represents the combination of our most predictably excellent maternal side with the exciting, cutting edge profile and power of Five Star Jackson-and he is sure to be exciting.

LOT 102 **DRAKE MISS H107K**
 Black II Polled 5/8 SM 3/8 AN
 3/4/2022 H107K ASA# 4289333

RC XCEED 063D TJ PLATTE RIVER 370D
TJ HANDYMAN 436G **DRAKE MISS F107H**
 TJ 409E DRAKE MISS D107F

	CE	BW	WW	YW	ADG	MCE	MILK	MWW	STAY						
EPD	15.3	-0.8	75.9	114.5	0.24	8.3	30.5	68.2	14.1						
Rank	20	30	50	55	65	30	10	20	55						
	DOC	CW	YG	MARB	BF	REA	API	TI							
EPD	14.2	35.3	-0.02	0.65	-0.011	0.33	151.6	88.8							
Rank	30	50	95	15	85	95	20	20							
Est. Calf EPDs															
	CE	BW	WW	YW	MCE	MILK	MWW	STAY	DOC	CW	YG	MARB	REA	\$API	\$TI
	11.5	-0.1	84.1	128.6	5.4	35.4	77.2	17.0	15.4	37.9	-0.03	0.57	0.46	150.8	90.2

Bred to TJ War Paint (3910125). Confirmed safe and due 2/1. Confirmed heifer calf.
 Good numbers with API and TI both in top 20%. Milk EPD in the top 10% and MWW in top 20%.
 She should have a dandy "War Paint" heifer.



DRAKE MISS H107K Sells as Lot 102.

LOT 103 **DRAKE MISS B50K**
 Black II Polled PB SM
 3/9/2022 B50K ASA# 4289340

CCR COWBOY CUT 5048Z HTP/SVF HEARTBREAKER W38
TJ PLATTE RIVER 370D **DRAKE MISS U50B**
 TJ 43Z RC DINA

	CE	BW	WW	YW	ADG	MCE	MILK	MWW	STAY						
EPD	12.8	0.8	70.6	100.5	0.19	5.4	23.4	58.5	14.1						
Rank	30	40	80	85	90	60	50	65	65						
	DOC	CW	YG	MARB	BF	REA	API	TI							
EPD	15.7	24.0	-0.25	0.25	-0.048	0.60	132.8	77.6							
Rank	10	70	95	35	95	95	50	60							
Est. Calf EPDs															
	CE	BW	WW	YW	MCE	MILK	MWW	STAY	DOC	CW	YG	MARB	REA	\$API	\$TI
	15.9	-0.6	77.9	114.9	9.0	25.3	64.0	15.2	16.0	30.4	-0.25	0.44	0.74	154.5	88.2

Bred to Five Star Jackson (3947790). Confirmed safe and due 2/26.
 Carrying a calf by Jackson for a late February birthday. Jackson calves come easy, grow fast and are attractive with good dispositions.



DRAKE MISS B50K Sells as Lot x103.

LOT 104 **DRAKE MISS UF30K**
 Black II Polled 3/4 SM 1/4 AN
 3/2/2022 UF30K ASA# 4289342

KBHR HIGH ROAD E283 SS/PRS CHASIN TAIL 18A
KBHR BACKROADS G014 **DRAKE MISS NU30F**
 KBHR B120 DRAKE MISS 30U

	CE	BW	WW	YW	ADG	MCE	MILK	MWW	STAY						
EPD	14.1	0.3	69.2	104.8	0.22	7.5	22.0	56.4	17.2						
Rank	35	50	75	75	80	40	70	75	25						
	DOC	CW	YG	MARB	BF	REA	API	TI							
EPD	14.4	28.0	-0.20	0.38	-0.041	0.55	138.3	76.7							
Rank	25	75	60	45	45	75	40	65							
Est. Calf EPDs															
	CE	BW	WW	YW	MCE	MILK	MWW	STAY	DOC	CW	YG	MARB	REA	\$API	\$TI
	10.9	0.5	80.8	123.8	5.0	31.1	71.3	18.6	15.5	34.3	-0.12	0.43	0.57	146.4	85.0

Bred to TJ War Paint (3910125). Confirmed safe and due 2/10. Confirmed heifer calf.
 Should have a War Paint heifer calf that will be a star out of this cow family.



DRAKE MISS UF30K Sells as Lot 104.



DRAKE MISS F390K Sells as Lot 105.

LOT 105 DRAKE MISS F390K
 Black // Polled 5/8 SM 3/8 AN
 4/6/2022 F390K ASA# 4289349

HOOK'S EAGLE 6E TJ PLATTE RIVER 370D
TJ BONAFIDE 647H DRAKE MISS KD390F
 TJ 23D DRAKE MISS K390D

CE	BW	WW	YW	ADG	MCE	MILK	MWW	STAY	
15.1	-0.6	84.5	130.5	0.29	7.4	26.8	69.1	15.6	
EPD Rank	25	35	20	25	35	40	30	20	40

DOC	CW	YG	MARB	BF	REA	API	TI	
18.2	38.1	-0.22	0.41	-0.036	0.78	146.5	88.7	
EPD Rank	4	40	55	40	60	35	30	25

Est. Calf EPDs

CE	BW	WW	YW	MCE	MILK	MWW	STAY	DOC	CW	YG	MARB	REA	\$API	\$TI
15.0	-1.1	87.1	132.9	8.5	27.7	71.2	17.0	13.1	40.4	-0.24	0.50	0.87	162.4	95.0

Bred to HL US Grant (3866295). Confirmed safe and due 2/18. Confirmed bull calf.
 A Bonafide Times/Platte River bred for a February US Grant bull calf. He will have good EPDs across the board with an API of 162 and TI of 95, both in the top 10%.



IRON CREEK F92K Sells as Lot 106.

LOT 106 IRON CREEK F92K
 Black // Polled 5/8 SM 3/8 AN
 3/9/2022 F92K ASA# 4211320

HOOK'S EAGLE 6E TJ DIESEL 350Z
TJ BONAFIDE 647H DRAKE MISS Y92F
 TJ 23D DRAKE MISS W92Y

CE	BW	WW	YW	ADG	MCE	MILK	MWW	STAY	
14.5	0.2	91.6	146.7	0.34	7.1	23.9	69.4	15.6	
EPD Rank	30	50	10	10	10	45	50	20	40

DOC	CW	YG	MARB	BF	REA	API	TI	
15.1	48.5	-0.19	0.33	-0.036	0.82	143.5	89.9	
EPD Rank	20	15	60	55	60	30	35	20

Est. Calf EPDs

CE	BW	WW	YW	MCE	MILK	MWW	STAY	DOC	CW	YG	MARB	REA	\$API	\$TI
16.8	-0.9	88.4	138.0	9.8	25.6	69.5	16.0	15.7	42.7	-0.22	0.48	0.85	162.3	95.1

Bred to Five Star Jackson (3947790). Confirmed safe and due 2/8. Confirmed bull calf.

LOT 107 DRAKE MISS E11K
 Black // Polled PB SM
 2/25/2022 E11K ASA# 4289338

WS PROCLAMATION E202 W/C EXECUTIVE ORDER 8543B
CCR SPEAK NOW 6178G DRAKE MISS Z11E
 CCR MS 2138 BOLDR 6028D DRAKE MISS J511Z

CE	BW	WW	YW	ADG	MCE	MILK	MWW	STAY
15.7	-0.8	79.8	125.2	0.28	8.2	23.5	63.2	13.0
EPD Rank	10	15	40	30	25	50	45	75

DOC	CW	YG	MARB	BF	REA	API	TI	
11.9	31.9	-0.33	0.19	-0.059	0.87	140.3	85.2	
EPD Rank	50	40	80	45	85	55	35	30

Est. Calf EPDs

CE	BW	WW	YW	MCE	MILK	MWW	STAY	DOC	CW	YG	MARB	REA	\$API	\$TI
17.4	-1.4	82.5	127.3	10.4	25.4	66.4	14.7	14.1	34.4	-0.29	0.41	0.87	158.4	92.0

Bred to Five Star Jackson (3947790). Confirmed safe and due 3/5. Confirmed heifer calf.
 This good heifer will have a heifer by Jackson or US Grant. Too close to call but either way will produce a nice calf.

LOT 108 DRAKE MISS D364K
 Black // Polled 3/4 SM 1/4 AN
 3/16/2022 D364K ASA# 4289341

HOOK'S EAGLE 6E ELM-MOUND/GS STANDSALONE
TJ BONAFIDE 647H DRAKE MISS Z364D
 TJ 23D DRAKE MISS X364Z

CE	BW	WW	YW	ADG	MCE	MILK	MWW	STAY
15.3	0.2	84.2	129.1	0.28	7.5	25.3	67.2	12.4
EPD Rank	20	50	20	25	40	40	25	75

DOC	CW	YG	MARB	BF	REA	API	TI	
16.4	30.2	-0.36	0.11	-0.078	0.80	123.0	80.6	
EPD Rank	10	65	15	90	10	35	65	50

Est. Calf EPDs

CE	BW	WW	YW	MCE	MILK	MWW	STAY	DOC	CW	YG	MARB	REA	\$API	\$TI
15.1	-0.7	87.0	132.2	8.5	27.0	70.2	15.4	12.2	36.5	-0.31	0.35	0.88	153.8	92.2

Bred to HL US Grant (3866295). Confirmed safe and due 4/17.
 You will like this one from the cow family that produced Denver Grand Champion "Spice Girl" and many other champions. They are flat out great brood cows!

LOT 109 **DRAKE MISS F415K**
 Black II Polled 5/8 SM 3/8 AN
 3/11/2022 F415K ASA# 4289334
 HOOK'S EAGLE 6E TJ DIESEL 350Z
TJ BONAFIDE 647H **DRAKE MISS W415F**
 TJ 23D DRAKE FAT GIRL



TJ BONAFIDE 647H Sire of Lot 109.

CE	BW	WW	YW	ADG	MCE	MILK	MWW	STAY
14.9	-0.1	89.9	142.2	0.33	7.8	23.7	68.4	13.9
Rank 25	45	10	10	15	35	55	20	60

DOC	CW	YG	MARB	BF	REA	API	TI
15.6	42.1	-0.27	0.27	-0.051	0.86	137.0	87.9
Rank 15	30	35	65	30	25	45	25

Est. Calf EPDs

CE	BW	WW	YW	MCE	MILK	MWW	STAY	DOC	CW	YG	MARB	REA	\$API	\$TI
14.9	-0.9	89.8	138.8	8.7	26.2	70.8	16.1	11.8	42.4	-0.26	0.43	0.91	159.2	95.2

 Bred to HL US Grant (3866295). Confirmed safe and due 4/18.
 This one can raise some pounds with a WW and YW EPD's in both top 10%.

LOT 110 **IRON CREEK 090K**
 Black II Polled 1/2 SM 1/2 AN
 1/5/2022 090K ASA# 4082435
 CCR COWBOY CUT 5048Z
TJ PLATTE RIVER 370D **90**
 TJ 43Z

LOT 111 **IRON CREEK 99K**
 Homo Black II Homo Polled 1/2 SM 1/2 AN
 3/12/2022 99K ASA# 4289366
 WS PROCLAMATION E202 TJ Z54
CCR SPEAK NOW 6178G **TJ 47D**
 CCR MS 2138 BOLDR 6028D TJ 153B

CE	BW	WW	YW	ADG	MCE	MILK	MWW	STAY
10.9	3.3	81.8	115.3	0.21	5.6	27.0	67.7	16.1
Rank 75	95	30	55	85	70	25	25	35

DOC	CW	YG	MARB	BF	REA	API	TI
14.3	22.1	-0.29	0.25	-0.064	0.57	123.2	77.4
Rank 30	90	30	70	20	75	65	60

CE	BW	WW	YW	ADG	MCE	MILK	MWW	STAY
17.2	-2.8	85.5	132.5	0.29	11.3	25.1	67.4	13.7
Rank 10	10	20	20	35	4	40	25	60

DOC	CW	YG	MARB	BF	REA	API	TI
16.3	42.5	-0.14	0.27	-0.027	0.66	141.6	88.2
Rank 15	30	75	65	70	60	35	25

Est. Calf EPDs

CE	BW	WW	YW	MCE	MILK	MWW	STAY	DOC	CW	YG	MARB	REA	\$API	\$TI
15.0	0.7	83.5	122.3	9.1	27.1	68.6	16.2	15.3	29.5	-0.27	0.44	0.72	149.3	87.8

 Bred to Five Star Jackson (3947790). Confirmed safe and due 2/17. Confirmed bull calf.

Est. Calf EPDs

CE	BW	WW	YW	MCE	MILK	MWW	STAY	DOC	CW	YG	MARB	REA	\$API	\$TI
16.1	-2.2	87.6	133.9	10.4	26.9	70.3	16.0	12.2	42.6	-0.20	0.43	0.81	157.3	93.6

 Bred to HL US Grant (3866295). Confirmed safe and due 3/26.

The bred heifers were bred by A.I. and then pasture exposed to the bulls as indicated in the footnotes. The heifers were then checked by ultrasound and the breeding information is the best estimate of the technician but is not guaranteed. We cannot guarantee calf sex or exact calving date and ask that you use your best judgment in this regard. Buyers agree to pickup all bred heifers within 7 days of the sale. The bulls used on the heifer AI and naturally are all top bulls of the breed. Five Star Jackson, HK Knockout and US Grant were used in cleanup. See their information in the back of the catalog.

We are proud to offer you this outstanding set of females. They're definitely donor quality, front pasture kind and brood cows deluxe represented in this offering.

Each of the bulls below is owned, in whole or in part, by Iron Creek Cattle Co. or Drake Simmental.
Contact Larry, Mason or Flint for semen.

FOR REFERENCE	POSS DEADWOOD		
	Homo Black II Homo Polled		PB AN
	9/5/2019	9731	ASA# 3871754

BASIN PAYWEIGHT 1682 POSS EASY IMPACT 0119
POSS MAVERICK **POSS ELLUNAMERE 399**
 POSS PRIDE 5163 POSS ELLUNMERE 0170

	CE	BW	WW	YW	ADG	MCE	MILK	MWW	STAY
EPD	14.9	2.5	102.9	173.3	0.44	7.9	26.5	77.7	12.5
Rank	25	85	1	1	1	35	30	3	70
	DOC	CW	YG	MARB	BF	REA	API	TI	
EPD	14.5	96.6	0.29	1.60	0.056	0.65	192.0	115.3	
Rank	25	1	99	1	99	60	1	1	

The \$900,000 sensation that has revolutionized the Angus breed for growth and \$Combined along with amazing terminal traits. The Deadwood SimAngus bulls will produce growth and power rarely found in any breed.



POSS DEADWOOD

FOR REFERENCE	KBHR BACKROADS G014		
	Homo Black II Homo Polled		PB SM
	3/16/2019	G014	ASA# 3618633

HOOK'S BEACON 56B CCR COWBOY CUT 5048Z
KBHR HIGH ROAD E283 **KBHR B120**
 WS MISS SUGAR C4 KBHR W001

	CE	BW	WW	YW	ADG	MCE	MILK	MWW	STAY
EPD	16.5	0.0	76.6	110.7	0.21	9.1	19.0	57.1	23.1
Rank	5	25	55	60	75	10	85	70	1
	DOC	CW	YG	MARB	BF	REA	API	TI	
EPD	18.9	27.5	-0.22	0.50	-0.039	0.62	173.4	88.5	
Rank	2	55	99	10	99	95	4	20	

We purchased Backroads from Keller's Broken Heart Ranch several years ago and he brings outstanding calving ease, docility and marbling, as well as a great "look", to the genetic mix. His heifers are producers, as reflected by his top 1% Stay.



KBHR BACKROADS G014

FOR REFERENCE	BSUM MOST WANTED 117J		
	Hetero Black II Homo Polled		5/8 SM 3/8 AN
	2/15/2021	117J	ASA# 3916336

SCHIEFELBEIN EFFECTIVE 61 NLC COW BOSS 160C
TUEL COWMAKER A3032 **X/L MS 9103G**
 RRJS MISS LEGACY 615X GW MISS DUE NORTH 800D

	CE	BW	WW	YW	ADG	MCE	MILK	MWW	STAY
EPD	18.1	-0.4	88.7	142.1	0.33	9.2	27.8	72.0	16.2
Rank	10	40	15	10	15	20	20	10	35
	DOC	CW	YG	MARB	BF	REA	API	TI	
EPD	15.0	32.0	-0.17	0.45	-0.041	0.52	155.7	92.5	
Rank	20	60	65	35	45	80	15	15	

Most Wanted was the top selling bull in the Black Summit sale in Powell, Wyoming, He is the kind we admire as he is soft made, easy-keeping, very sound on his feet and legs and easy on the eyes. His EPDs are excellent with 13 traits in the top 35% of the breed including top 10% calving ease and top 10-15% growth traits and top 15% API and TI.



BSUM MOST WANTED 117J

Each of the bulls below is owned, in whole or in part, by Iron Creek Cattle Co. or Drake Simmental.
Contact Larry, Mason or Flint for semen.



TJ WAR PAINT 759J

FOR REFERENCE	TJ WAR PAINT 759J							
	Homo Black Homo Polled						1/2 SM 1/2 AN	
	2/24/2021				759J		ASA# 3910125	

TJ FROSTY 318E				CCR COWBOY CUT 5048Z					
TJ CHIEF 460G				TJ 2D					
TJ 52A				TJ MISS NEW DAY U14					
	CE	BW	WW	YW	ADG	MCE	MILK	MWW	STAY
EPD	7.7	0.7	92.3	142.7	0.32	2.4	40.2	86.2	19.9
Rank	95	60	10	10	20	99	1	1	5
	DOC	CW	YG	MARB	BF	REA	API	TI	
EPD	16.5	40.5	-0.03	0.48	0.009	0.58	148.7	92.7	
Rank	10	35	95	30	95	70	25	15	

The \$70,000 Triangle J Ranch sale topper owned with ABS, Trauernicht Simmental and Triangle J Ranch, War Paint has developed into a popular AI sire around the country by siring stout, attractive fast growing bulls and massive bodied, feminine daughters. Outstanding growth and maternal EPDs.



CLRS GUARDIAN 317G Sire of US Grant.

FOR REFERENCE	HL US GRANT J89							
	Black Homo Polled						PB SM	
	3/5/2021				J-89		ASA# 3866295	

HOOK'S BEACON 56B				SFG THE JUDGE D633					
CLRS GUARDIAN 317G				HL MS JUDGE G89					
CLRS ALWAYS XCELLENT				HL MS CARVER E17					
	CE	BW	WW	YW	ADG	MCE	MILK	MWW	STAY
EPD	14.9	-1.6	89.7	135.3	0.29	9.5	28.6	73.2	18.3
Rank	15	10	15	15	20	10	15	10	20
	DOC	CW	YG	MARB	BF	REA	API	TI	
EPD	8.0	42.7	-0.25	0.58	-0.035	0.95	175.5	101.7	
Rank	90	15	95	5	99	35	3	2	

Grant came out of the esteemed Heartland Simmental's program by way of our friend Grant Mathes. Grant is one of the most attractive Guardian sons to date. His numbers are awesome as well- top 15% calving ease, growth traits, milk and carcass weight, top 10% birthweight, maternal calving ease and maternal weaning weight and top 3% API and 2% TI.



CCR SPEAK NOW 6178G

FOR REFERENCE	CCR SPEAK NOW 6178G							
	Homo Black Homo Polled						3/4 SM 1/4 AN	
	8/30/2019				6178G		ASA# 3703453	

CCR COWBOY CUT 5048Z				CCR BOULDER 1339A					
WS PROCLAMATION E202				CCR MS 2138 BOLDR 6028D					
WS MISS SUGAR C4				CCR MS 7332REVENUE 2138Z					
	CE	BW	WW	YW	ADG	MCE	MILK	MWW	STAY
EPD	15.8	-0.3	88.8	144.8	0.35	9.9	27.1	71.2	15.1
Rank	20	40	15	10	10	10	25	15	45
	DOC	CW	YG	MARB	BF	REA	API	TI	
EPD	16.8	45.3	-0.30	0.25	-0.055	0.99	141.0	88.2	
Rank	10	20	30	70	30	15	35	25	

Our \$21,000 selection from Cow Camp Ranch in Kansas, Speak Now is a farm favorite for his calves' outstanding looks, calving ease, growth and maternal traits- and their very docile natures. A great breeding bull.

Each of the bulls below is owned, in whole or in part, by Iron Creek Cattle Co. or Drake Simmental.
Contact Larry, Mason or Flint for semen.

FOR REFERENCE	HA KNOCKOUT 2K							
	Homo Black II Homo Polled						PB SM	
	1/28/2022		2K		ASA# 4040478			

BRIDLE BIT ECLIPSE E744

HOOK'S BLACK HAWK 50B

HOOK'S GALILEO 210G

HA HOPE 004H

HOOK'S EVITA 18E

HA FELICITY 815F

	CE	BW	WW	YW	ADG	MCE	MILK	MWW	STAY
EPD	15.4	-1.7	86.9	138.7	0.32	9.4	30.4	73.7	20.5
Rank	10	10	20	15	10	10	10	10	5
	DOC	CW	YG	MARB	BF	REA	API	TI	
EPD	19.4	46.8	-0.32	0.95	-0.070	0.94	201.9	110.5	
Rank	1	10	80	1	70	40	1	1	

Cutting edge genetics and Larry's pick of bulls from the Bred for Balance sale. Knockout is sired by the red hot Galileo bull and you will be hard pressed to find a better set of EPDs in the country-top 10% calving ease, gain, maternal calving ease and maternal weaning weight, top 5% Stay and top 1% docility, marbling, API (202!) and TI (110.5).



HA KNOCKOUT 2K

FOR REFERENCE	KBHR MATRON OF HONOR F202							
	Homo Black II Homo Polled						PB SM	
	3/26/2018		F202		ASA# 3499782			

HOOKS SHEAR FORCE 38K

WS HOT BEEF X38

HOOK'S BEACON 56B

BAR CK MS X38 106Z

HOOKS ZAFIRAH 41Z

BAR CK MS MEAT MKR 323T

	CE	BW	WW	YW	ADG	MCE	MILK	MWW	STAY
EPD	14.4	0.3	83.1	130.2	0.29	10.9	30.6	71.9	19.9
Rank	15	30	30	25	20	2	10	15	10
	DOC	CW	YG	MARB	BF	REA	API	TI	
EPD	13.4	54.0	-0.39	0.80	-0.053	1.36	185.5	102.0	
Rank	30	3	55	1	85	1	1	2	

Matron is the most proven producer of elite genetics in the Iron Creek herd. At six years of age she retains elite, balanced EPDs in the top 15% for calving ease, 20% for gain, 2% maternal calving ease, 10% milk and stay, 3% carcass weight, 1% marbling, ribeye area and All Purposed Index and 2% Terminal Index. Year after year, mating after mating, she produces elite genomic improvers. And she has the intangibles-excellent mothering instinct and a docile nature. We have retained every Matron daughter in our herd. Purchasing her sons will add this breed leading genetics to your herd.



KBHR MATRON OF HONOR F202

FOR REFERENCE	HOOK'S CRYSTAL 1C							
	Homo Black II Homo Polled						3/4 SM 1/4 AN	
	1/28/2015		1C		ASA# 3013438			

GW PREMIUM BEEF 021TS

TRIPLE C INVASION R47K

GW-WBF SUBSTANCE 820Y

HOOK'S UNDERESTIMATED 6U

GW MISS MATERNAL 558P

HOOKS PROMENADE 14-P

	CE	BW	WW	YW	ADG	MCE	MILK	MWW	STAY
EPD	9.7	2.0	88.7	142.3	0.33	5.4	20.9	65.0	17.4
Rank	85	80	15	10	15	75	80	35	20
	DOC	CW	YG	MARB	BF	REA	API	TI	
EPD	16.2	46.4	-0.35	0.65	-0.078	0.98	155.0	93.7	
Rank	15	20	15	15	10	15	20	10	



HOOK'S CRYSTAL 1C



RB LADY BLASTER 412-7532

FOR REFERENCE	RB LADY BLASTER 412-7532		
	Homo Black II Homo Polled		PB Angus
	09-15-2017	7532	AAA# +*19094973

MOGCK BULLSEYE
BRUNS BLASTER
 BALDRIDGE BLACKBIRD 11 BAF

EXAR COMANCHERO 1022B
RB LADY COMANCHERO 079-412
 R B LADY STANDARD 305-0790

	CED	BW	WW	YW	CEM	MILK	DOC
EPD	+4	+2.5	+87	+148	+15	+41	+28
Rank	65	75	2	2	3	1	10

	CW	MARB	RE	FAT	SM	SW	SB	SC
EPD	+70	+78	+93	+005	+68	+89	+172	+291
Rank	4	25	10	40	30	1	10	10



HOOK'S GINGER 87G

FOR REFERENCE	HOOK'S GINGER 87G		
	Homo Black II Homo Polled		PB SM
	2/23/2019	87G	ASA# 3563678

HOOK'S BLACK HAWK 50B
HOOK'S EAGLE 6E
 HOOK'S CRYSTAL 1C

HOOK'S BOUNTY 6B
HOOK'S DESI 80D
 HOOK'S ULTIMO 14U

	CE	BW	WW	YW	ADG	MCE	MILK	MWW	STAY
EPD	13.1	-1.6	78.4	117.5	0.24	6.3	26.0	65.0	16.8
Rank	30	10	45	45	55	45	30	35	35

	DOC	CW	YG	MARB	BF	REA	API	TI
EPD	12.6	36.1	-0.41	0.49	-0.068	1.10	161.1	92.7
Rank	40	30	45	10	70	15	10	15

Our \$8,000 selection from Hook's Fabulous Five with broad based genetic strength and a top 10% API.



LCDR JETTA 93J

FOR REFERENCE	LCDR JETTA 93J		
	Hetero Black II Homo Polled		PB SM
	3/23/2021	93J	ASA# 3960758

W/C BANKROLL 811D
W/C FORT KNOX 609F
 K-LER DOLLY'S QUEEN 609D

CLRS GRADE-A 875 A
WS MISS SUGAR C4
 WS ANISE A71

	CE	BW	WW	YW	ADG	MCE	MILK	MWW	STAY
EPD	12.9	0.9	90.9	145.7	0.34	7.0	28.4	73.6	14.9
Rank	30	45	10	10	5	30	15	10	60

	DOC	CW	YG	MARB	BF	REA	API	TI
EPD	16.5	42.3	-0.33	0.48	-0.060	0.99	158.7	97.6
Rank	10	15	80	10	85	30	15	5

This \$27,000 daughter of Sugar, the most accomplished cow in the Simmental breed, is a unique breeding piece with a massive, attractive look, outstanding growth, maternal and carcass trait EPDs and a top 15% API and 5% TI.

FOR REFERENCE	MONTANA BLACKBIRD 7250		
	Homo Black II Homo Polled		PB Angus
	09-03-2017	7250	AAA# +*18885912

BASIN PAYWEIGHT 006S SITZ UPWARD 307R
BASIN PAYWEIGHT 168Z **GALAXY BLACKBIRD 210Z**
 21AR O LASS 7017 RIVERBEND BLACKBIRD 4301

	CE	BW	WW	YW	CEM	MILK	DOC	
EPD	+14	-2.7	+66	+121	+13	+36	+32	
Rank	3	2	30	20	10	5	2	
	CW	MARB	RE	FAT	SM	SW	SB	SC
EPD	+52	+.82	+.57	+.070	+72	+79	+154	+272
Rank	25	20	45	95	20	3	25	15



MONTANA BLACKBIRD 7250

FOR REFERENCE	TJ 29B		
	Homo Black II Homo Polled		1/2 SM 1/2 AN
	1/19/2014	29B	ASA# 2891386

TRIPLE C SINGLETARY S3H BOYD NEW DAY 8005
CCR COWBOY CUT 5048Z **TJ MISS NEW DAY U19**
 CCR MS 4045 TIME 7322T T J MISS FREIGHT N22

	CE	BW	WW	YW	ADG	MCE	MILK	MWW	STAY
EPD	10.3	2.2	79.2	129.7	0.32	6.4	36.9	76.4	10.4
Rank	80	85	35	25	20	60	1	4	90
	DOC	CW	YG	MARB	BF	REA	API	TI	
EPD	14.0	35.0	-0.26	0.52	-0.043	0.79	130.2	85.8	
Rank	30	50	40	25	45	35	55	30	



TJ 29B

FOR REFERENCE	JC MS SPARTAN 601D		
	Homo Black II Homo Polled		1/2 SM 1/2 AN
	1/30/2016	JC601D	ASA# 3122512

CCR CATALYST 7035W HOOKS SHEAR FORCE 38K
CCR SPARTAN 9124A **JC MS FORCE 406B**
 CCR MS APPLE 9332W RAY BLACKCAP 5229

	CE	BW	WW	YW	ADG	MCE	MILK	MWW	STAY
EPD	10.7	4.5	93.8	142.9	0.31	6.5	17.5	64.2	11.5
Rank	75	99	5	10	25	55	95	40	80
	DOC	CW	YG	MARB	BF	REA	API	TI	
EPD	16.4	52.0	-0.14	0.42	-0.031	0.75	127.0	86.4	
Rank	10	10	75	40	60	40	60	30	



JC MS SPARTAN 601D

Drake Simmental
24366 570th St
Centerville, IA 52544

Presorted
First Class
US Postage
PAID
SlateGroup



DRAKE SIMMENTAL

Bull and Female Sale



1.26.24

**Drake Sale Facility
Centerville, IA
1:00 PM (CT)**