

# Semen Guide



GENETIC RESOURCES

2023

**Serious Genetic Value.**



# 2023 Allied Semen and Genetics

Hello, and welcome to the 2023 edition of the Allied Genetic Resources Semen directory. I believe this is the 11th of these annual publications and the largest and most comprehensive to date. Thank you to the many breeders who promote their bulls and programs using our services and also to the folks at ORigen Inc. who make this growing initiative possible through their professional storage, handling, distribution and financial services.

This edition highlights our core purpose to promote independent breeder owned bulls that deliver the very latest and best for cutting edge genetic improvement. It also showcases the potential for excellence that comes from a long running plan to make documented progress for better cattle and better beef. Our goal has always been to offer more choices and more value than anyone else in the genetics business then create a platform that allows for maximum sampling of the best genetics available. Instead of offering 3 new bulls each year, then promoting them on into the future, we bring in 30-50 new candidate sires annually. The idea is to get multiple bulls well sampled, sort the wheat from the chaff and then only keep the very best for long term use. I think you will see what I mean as you page through this directory. It offers the largest selection of Red and Black SimAngus, Purebred Simmental, highly selected for value and profit available in the beef business.

The impact of genetic decisions will be felt in your operation for the next 15-20 years. So, getting it right is crucial. That's why just purchasing semen from acquaintances or based on a nice sales call just isn't good enough. In this publication you will find that most of the bulls have RightChoice evaluations (G+, ACE, ATM) provided by Dr. Mahdi Saatchi from Top Genomics LLC. This information followed up with the precision mating technology that comes from using RightMate and used in conjunction with IGS EPDs, gives you a better picture of what you can expect from a sire and a better road map to the future than anything you have used before. Just ask the now more than 100 breeders who count on it each year. Thanks again for your interest. Please give any of our great team a call to visit about these sires or to place an order.

Sincerely,  
Marty Ropp, Founder  
Allied Genetic Resources

**Serious Genetic Value.**





# Meet the Allied Team

**MARTY ROPP**

406-581-7835

[mroppagr@gmail.com](mailto:mroppagr@gmail.com)

**ROCKY FORSETH**

406-590-7984

[rockyforseth89@gmail.com](mailto:rockyforseth89@gmail.com)

**COREY WILKINS**

256-590-2487

[coreyagr@gmail.com](mailto:coreyagr@gmail.com)

**LEOMA WELLS**

559-696-4941

[cattledatagenie@gmail.com](mailto:cattledatagenie@gmail.com)

**DR. MAHDI SAATCHI**

[saatchi.mahdi@gmail.com](mailto:saatchi.mahdi@gmail.com)

**TOM HOOK**

507-829-5283

[hookfarms@mvtvwireless.com](mailto:hookfarms@mvtvwireless.com)

**JARED MURNIN**

406-321-1542

[jmurninagr@gmail.com](mailto:jmurninagr@gmail.com)

# ORIGen

[www.ORIGenBEEF.org](http://www.ORIGenBEEF.org)

ORIGen is a proud partner of Allied Genetic Resources. ORIGen and Allied Genetic Resources are two genetic companies, owned by breeders, that have united to help both groups of breeders market their Master Breeder Genetics. Through this partnership, you as customers can purchase semen from both organizations through one location by simply contacting an Allied representative or ORIGen. ORIGen is also a custom collection facility that collects and distributes Allied sires.

*EPDs listed current March 29, 2023.*

**2023 SIMANGUS OFFERING AVERAGE**

**\$API 171.1 (TOP 4%) AND \$TI 98.2 (TOP 2%) 2023**

**PUREBRED AND 3/4 OFFERING AVERAGE**

**\$API 175.0 (TOP 3%) AND \$TI 98.8 (TOP 3%)**

# Improved Buying Confidence with Greater Genomic **ASSURANCE**

Access to more and better information has always been key to making wise decisions. The evolution and improvement of genetic evaluation tools too has given us an ever-clearer picture of the true genetic makeup of cattle and thus a better view of the value proposition. RightMate, powered by Top Genomics LLC is taking the evaluation of genetics and genomics one giant step further. By combining specific genomic information with the long-proven value of EPDs, this new advancement in technology improves our depth and precision when evaluating the actual ability to transmit value and profit.

The 3 Accreditation Logos below are designed to simplify bull selection and improve buyer confidence by more accurately describing the genetics offered and by reducing risk. What this means to you as a customer is a much greater assurance that you are getting both what you want and need from the genetics you purchase. What it means to your seedstock provider is access to RightMate technology that simply sets them apart from the rest of the industry.



**ACCREDITED GENOMIC PLUS** – For the majority of producers who simply need consistent and balanced genetic improvement, without genomic setbacks, G+ Accredited bulls should be on your list for premium purchase. These sires will absolutely move you forward

for both cost reduction and income producing traits and substantially reduce risk when compared to all other evaluation programs. It's simple, the right genes are in these bulls to help secure a profitable future and the they have great EPDs to match!



**ACCREDITED TERMINAL MATE** – Just like an ATM machine makes it simpler to access your cash, the ATM Logo highlights bulls accredited to generate extra cash income as soon as your next calf crop! These bulls are meant specifically to use only on mature cows and for the purpose of adding performance, pay weight and end product value to market.



## **ACCREDITED CALVING EASE**

– Simply find bulls with the ACE logo for third party Accredited, secure Calving Ease bulls. Though we have had tools in the past to assist in choosing heifer bulls, we've never had one nearly this effective. The reduced risk that comes with this

genomic certification will simply make your decisions easier and your heifer calving season more successful. Purchase special purpose ACE bulls with confidence. They will deliver consistent and predictable calving ease.

MARTY ROPP 406-581-7835

**RightChoice**  
powered by TOP GENOMICS



# RightMate

powered by  TOP GENOMICS

You've narrowed down the list of the sires that will drive your program's direction for the future. The success of your operation is in the balance. Now, you can go to the next level with a **RightMate** evaluation powered by **Top Genomics LLC** to prescribe the bulls that genomically compliment each female. Sharpen the list of candidate sires, maximize improvement potential, improve calf crop uniformity and avoid the wasted matings that take dollars from the operation and can lead to early culling of females based simply on a missed opportunity for her to do better.

Whether you are making matings for each cow in the herd or making the expensive decision for a flush of the best donor in the herd, RightChoice is a must for your decision-making tool box. The best sire choice for each cow has always been our focus as breeders but in fact, the bulls you don't choose from your options are even more important.

**GIVE US A CALL FOR MORE INFORMATION AND TO MAKE THE POWER OF RIGHTCHOICE WORK FOR YOU.**



[www.alliedgeneticresources.com](http://www.alliedgeneticresources.com)  
[www.topgenomics.com](http://www.topgenomics.com)

**ALLIED**  
GENETIC RESOURCES  
MARTY ROPP 406-581-7835



## KBHR GLOBAL J138



Homozygous Black, Homozygous Polled || PB SM  
 ASA# 3943850 DOB: 3/23/2021 Tattoo: J138

Owned by:  
 All Beef LLC || Rydeen Farms || Kellers Broken Heart Ranch

- Global literally does everything right. First calves look great!
- Global has developed into a long sided, clean patterned and striking bull with wonderful feet and structure.
- Topping the 2022 KBHR sale at \$75,000 he is living up to his early billing!
- Top 1% STAY, Top 1% MCE and Top 1% API, he qualifies as one of the very best ACE qualified bulls ever.



KBHR Debutante H113, Full sister to Global



KBHR Donor and Maternal sister to Global

BARKS ACE EPD	DIRECT					MATERNAL					CARCASS					S INDEX	
	CE	BW	WW	YW	ADG	MCE	MILK	MWW	STAY	DOC	CW	YG	MARB	REA	API	TI	
	14.5	0.3	88.1	135.1	0.29	10.3	28.1	72.1	23.4	16.2	31.1	-0.33	0.71	0.85	187.7	100.9	
	0.47	0.52	0.53	0.53	0.53	0.32	0.28	0.36	0.38	0.50	0.48	0.39	0.46	0.46	-	-	
	15	30	20	20	25	2	20	15	1	10	45	90	1	60	1	2	

SEMEN \$30

Contact Allied to order semen.



CCR COWBOY CUT 5048Z  
 SIRE: WS PROCLAMATION E202  
 WS MISS SUGAR C4

WS HOT BEEF X38  
 DAM: BAR CK MS X38 106Z  
 BAR CK MS MEAT MKR 323T

**ALLIED**  
 GENETIC RESOURCES

**ORigen**



Homozygous Black, Homozygous Polled || PB SM  
ASA# 3716905 DOB: 9/5/2019 Tattoo: 9114G

Owned by:

Gibbs Farms || All Beef LLC || Genex || Salinas Farms || J/C Simmental

- What the first crop of Essential sons and daughters have done for generating profit is unmatched. His sons were the feature of 2023 sale season.
- Part of the reason is that he has earned top 1% rankings for 9 different and crucial trait EPDs.



Top Seller at Great Lakes Beef Connection



\$110,000 Essential son from Clear Springs

- Expect great feet and ultra quiet disposition every time.
- Expect great calving ease and a proven level of growth that pleases all serious breeders.
- His young dam earned an average weaning ratio of 115 before entering the Gibbs donor program.

	DIRECT					MATERNAL				CARCASS				S INDEX		
	CE	BW	WW	YW	ADG	MCE	MILK	MWW	STAY	DOC	CW	YG	MARB	REA	API	TI
EPD	17.2	-1.8	103.6	174.6	0.44	11.2	26.0	77.7	16.9	19.7	63.1	-0.30	0.48	1.45	178.5	108.1
ACC	0.64	0.81	0.77	0.76	0.76	0.36	0.16	0.31	0.37	0.64	0.53	0.43	0.52	0.55	-	-
RANK	3	10	2	1	1	1	35	3	45	1	1	95	10	1	2	1

CCR WIDE RANGE 9005A  
SIRE: GIBBS 7382E BROAD RANGE  
SSF BLK LOUISE Y534

HOOK'S BROADWAY 11B  
DAM: GIBBS 7153E STAR 3136A  
GIBBS 3136A STAR 0589X

## GIBBS 9114G ESSENTIAL



**SEMEN Call for Price**

Contact Allied to order semen.

**GENEX**

**ALLIED**  
GENETIC RESOURCES



## LBRS GENESIS G69



Breed ACC EPD	DIRECT					MATERNAL					CARCASS					S INDEX	
	CE	BW	WW	YW	ADG	MCE	MILK	MWW	STAY	DOC	CW	YG	MARB	REA	API	TI	
	7.9	2.9	118.5	181.5	0.39	4.2	28.0	87.3	20.2	15.8	76.5	-0.21	1.01	1.23	196.3	122.1	
	0.67	0.87	0.85	0.84	0.84	0.38	0.21	0.35	0.42	0.72	0.63	0.47	0.63	0.57	-	-	
	90	80	1	1	1	80	20	1	10	10	1	99	1	4	1	1	

## SEMEN Call for Price

Contact Allied to order semen.



CCR COWBOY CUT 5048Z  
SIRE: WS PROCLAMATION E202  
WS MISS SUGAR C4

HOOK'S XAVIER 14X  
DAM: LBR DIANA D69  
LBR DOUBLE TAKE X14



Homozygous Black, Homozygous Polled || PB SM  
ASA# 3603651 DOB: 1/31/2019 Tattoo: G69

Owned by:

Genex || Little Bitterroot || All Beef LLC || Hook Farms

- Genesis has proven to be the pre-eminent growth and carcass sire of his time.
- Currently he ranks as the #1 \$TI PB sire in the breed.
- His combination of documented growth along with +1 MB EPD at press time is simply untouched by any other proven sire.
- Even with this much performance and carcass prowess, his young daughters look great and he ranks in the top 10% for STAY and 10% for Doc.
- His first sons are sale favorites for commercial cattlemen and breeders alike.



High Selling Heifer at Eichacker Simmentals



CLRS King James, Genesis son



Homozygous Black, Homozygous Polled || PB SM  
ASA# 3789447 DOB: 3/20/2020 Tattoo: H060

Owned by:

All Beef LLC || Keller Broken Heart Ranch || Hook Farms || Eichacker  
Simmentals || Gibbs Farms || ABS Global || Woonallee Simmentals

- The first calves from this \$102,000 Sugar son are living up to all expectations.
- Progeny are wide made, heavy muscled progeny with extra bone and great structure, just like their sire.
- Expect nothing but great results from his daughters as well with



Honor Son at Eichacker Simmentals



Honor son at Eichacker Simmentals

- Top carcass genetics are just icing on the cake and finish the value proposition that vaults Honor easily into the top 1% for both \$API and \$TI.



	DIRECT					MATERNAL					CARCASS				S INDEX	
	CE	BW	VV	YW	ADG	MCE	MILK	MWW	STAY	DOC	CW	YG	MARB	REA	API	TI
EPD	17.1	-2.4	86.9	127.4	0.25	10.2	30.5	73.9	19.4	14.6	38.5	-0.31	0.70	1.14	185.5	103.1
ACC	0.65	0.79	0.69	0.69	0.69	0.41	0.31	0.41	0.45	0.57	0.59	0.44	0.52	0.53	-	-
RANK	3	4	25	30	50	3	10	10	20	15	20	95	1	10	1	1

HOOKS SHEAR FORCE 38K  
SIRE: HOOK'S BEACON 56B  
HOOKS ZAFIRAH 41Z

CLRS GRADE-A 875 A  
DAM: WS MISS SUGAR C4  
WS ANISE A71



**SEMEN Call for Price**

Contact Allied to order semen.





## KBHR HIGH ROAD E283



BIRTH WT WEANING WT 1000 LBS	DIRECT					MATERNAL					CARCASS					\$ INDEX	
	CE	BW	WW	YW	ADG	MCE	MILK	MWW	STAY	DOC	CW	YG	MARB	REA	API	TI	
	15.5	-1.2	96.0	147.5	0.32	8.0	25.7	73.6	17.1	16.4	44.3	-0.40	0.56	1.25	174.7	104.1	
	0.82	0.93	0.91	0.91	0.91	0.66	0.63	0.69	0.50	0.84	0.75	0.57	0.72	0.70	-	-	
	10	10	5	10	10	15	35	10	40	5	10	60	4	3	3	1	

## SEMEN Call for Price

Contact Allied to order semen.

HOOKS SHEAR FORCE 38K  
SIRE: HOOK'S BEACON 56B  
HOOKS ZAFIRAH 41Z

CLRS GRADE-A 875 A  
DAM: WS MISS SUGAR C4  
WS ANISE A71

**ALLIED**  
GENETIC RESOURCES

**GENEX**

Homozygous Black, Homozygous Polled || PB SM  
ASA# 3312276 DOB: 4/10/2017 Tattoo: E283

Owned by:

JC Simmental || Gibbs Farms || All Beef LLC || Keller Broken Heart || Genex

- High Road is one of the most consistent of the highly used sires in the past decade. Part of the reason he currently ranks as the #2 most used Sim bull.
- Every time you use him you get added growth, added frame, improved feet and across the board improvement for a wide variety of measurable traits.
- High Road daughters too are impressing everyone with wonderfully designed, tightly suspended udders and great teat structure.
- Now at high accuracy, he ranks in the top 10% or better for 12 important traits including spread from top 10% at birth to 5% at weaning.
- Commercial herds ask every year for calves that come easy and grow fast. That's simply why High Road sons sell so well.



Son of High Road at GLBC



High Road Son at Cow Camp Ranch



Homozygous Black, Homozygous Polled || PB SM  
 ASA# 3254156 DOB: 2/21/2017 Tattoo: E202

Owned by:  
**APEX Cattle || Wilkinson Farms**

- At just 6 years of age, Proclamation has already taken on legendary status among purebred sire options, because he consistently makes cattle better.
- Proclamation daughters have finished his proof as the very best Cowboy Cut son to date with their tremendous udders and STAY.



LBRS Genesis, \$21,000 son from Bulls of the Big Sky



KBHR Bold Ruler

- With a weaning weight EPD of more than +100 and a MWW EPD in rare air at +83, just expect performance at every turn.
- He currently ranks in the top 5% or better for 9 different EPD categories.



	DIRECT					MATERNAL					CARCASS				S INDEX	
	CE	BW	WW	YW	ADG	MCE	MILK	MWW	STAY	DOC	CW	YG	MARB	REA	API	TI
EPD	12.9	0.5	101.3	149.8	0.30	7.4	32.1	82.7	21.1	18.6	49.5	-0.24	0.58	0.83	177.3	104.8
	0.82	0.94	0.92	0.92	0.92	0.72	0.74	0.79	0.63	0.86	0.73	0.57	0.71	0.73	-	-
RANK	25	30	2	4	20	25	4	1	5	1	4	99	3	65	2	1

TRIPLE C SINGLETARY S3H  
 SIRE: CCR COWBOY CUT 5048Z  
 CCR MS 4045 TIME 7322T

CLRS GRADE-A 875 A  
 DAM: WS MISS SUGAR C4  
 WS ANISE A71

## WS PROCLAMATION E202



**SEMEN \$40**

Contact Allied to order semen.

**ORiGen** **ALLIED**  
 GENETIC RESOURCES



## LCDR RESERVE 210J



Homozygous Black, Homozygous Polled || PB SM  
 ASA# 3960639 DOB: 2/21/2021 Tattoo: 210J

Owned by:

All Beef LLC || Genex || Gibbs Farms || Lazy C Diamond Ranch

- Reserve is the blaze faced answer to driving genetic value fast forward while promoting genetic diversity.
- Few young, outcross sires can boast his combination of 9 traits in the top 5% of Purebreds and 4 more in the top 30%
- Physically Reserve has wonderful balance, should add some size and length, has wonderful thickness and nearly perfect hoof structure.
- Expect great the great disposition we all need from Reserve progeny too.

BARKS ACC EPD	DIRECT					MATERNAL					CARCASS				S INDEX	
	CE	BW	WW	YW	ADG	MCE	MILK	MWW	STAY	DOC	CW	YG	MARB	REA	API	TI
	15.8	0.2	97.3	152.8	0.35	10.2	21.3	69.9	18.1	14.4	53.2	-0.34	0.70	1.22	183.0	106.1
	0.40	0.43	0.44	0.45	0.45	0.22	0.16	0.25	0.30	0.42	0.39	0.32	0.40	0.38	-	-
	10	30	4	3	4	3	70	20	30	20	2	85	1	4	1	1

**SEMEN Call for Price**

Contact Allied to order semen.



CDI ENTOURAGE 156U  
 SIRE: HHS MR ENTOURAGE 867B  
 HHS MISS 836Z

WS CEO C155  
 DAM: LCDR MS ECHO 43E  
 LCDR MS CHLOE 55C

**ALLIED**  
 GENETIC RESOURCES

**GENEX**



LCDR Ms Chloe 55C, Grandam of Reserve 210J



Homozygous Black, Homozygous Polled || PB SM  
 ASA# 3561070 DOB: 3/12/2019 Tattoo: G9117

Owned by:  
 Doll Simmental || All Beef LLC

- For those that missed using Resource right off the bat, this year's calf crop results should make you reconsider.
- This week a son at Bridle Bit Simmentals just sold for \$100,000 and the top selling bull at Wildberry Farms next week will be another great son!



G994, Full Sister to Resource



\$100,000 son of Resource at Bridle Bit Simmentals

- The heifer calves and young females he produces are physically gorgeous as well and will simply make cows.
- The B452 cow family has done it all for the Cook family and 3 of Resources sisters are already elite donors.
- Expect extra attractive phenotype with tremendous mass, width of rib and thickness.



	DIRECT					MATERNAL					CARCASS				\$ INDEX	
	CE	BW	WW	YW	ADG	MCE	MILK	MWW	STAY	DOC	CW	YG	MARB	REA	API	TI
EPD	16.0	-0.9	83.2	131.3	0.30	10.0	29.9	71.4	16.8	15.1	37.0	-0.45	0.39	1.21	160.6	92.5
RANK	0.64	0.73	0.68	0.68	0.68	0.34	0.28	0.38	0.35	0.48	0.57	0.42	0.47	0.50	-	-
ACC	10	15	35	25	20	3	10	15	45	15	25	35	15	5	10	10

HOOK'S BEACON 56B  
 SIRE: HOOK'S ENCORE 65E  
 HOOK'S CHATTER 63C

SAND RANCH HAND  
 DAM: BRIDLE BIT MISS B452  
 BRIDLE BIT MISS Y183



**SEMEN \$30**

Contact Allied to order semen.

**ORigen** **ALLIED**  
 GENETIC RESOURCES



## IR/JLN BOOMER J425



Homozygous Black, Homozygous Polled || PB SM  
 ASA# 3999260 DOB: 6/2/2021 Tattoo: J425

Owned by:  
 All Beef LLC || JC Simmental || Irvine Ranch

- Big time spread genetics stemming from breed greats.
- Boomer qualifies as an ACE sire, but there is a whole lot more to love.
- Physically imposing, he was the lead and top seller at the 2022 Irvine Ranch sale.
- His dam turns heads, with her attractive type, perfect udder and a powerhouse genetic profile.



Astoria, Dam of Boomer



Sire of Boomer

BARKS ACE EPD	DIRECT					MATERNAL					CARCASS					S INDEX	
	CE	BW	WW	YW	ADG	MCE	MILK	MWW	STAY	DOC	CW	YG	MARB	REA	API	TI	
	16.8	-3.1	86.4	134.5	0.30	8.3	21.4	64.5	17.3	19.0	29.7	-0.37	0.66	1.18	181.5	102.5	
	0.45	0.46	0.46	0.46	0.46	0.29	0.24	0.30	0.35	0.45	0.44	0.36	0.42	0.42	-	-	
	3	2	25	20	20	15	70	45	40	1	50	75	2	10	2	2	

SEMEN \$30

Contact Allied to order semen.



HOOK'S BLACK HAWK 50B  
 SIRE: HOOK'S EAGLE 6E  
 HOOK'S CRYSTAL 1C

KBHR HIGH ROAD E283  
 DAM: KBHR IR/JLN ASTORIA G119  
 BAR CK MS X38 106Z

**ALLIED** ORigen  
 GENETIC RESOURCES



Homozygous Black, Homozygous Polled || PB SM  
 ASA# 3886910 DOB: 2/10/2021 Tattoo: J3541

Owned by:

ALL Beef LLC || Wonallee Simmentals || Select Sires || RA Brown Ranch ||  
 Reflected R Ranch

- Emblem was purchased this fall with Select Sires to move the Eagle legacy to the next level as a purebred option.
- The \$40,000 top seller at the 2023 RABrown fall bull sale, Emblem is a truly sound structured and more attractive fronted version of his sire.



Maternal grandsire of Emblem



Sire of Emblem

- Being both a G+ and having the ACE certification, expect extra potential as a heifer bull with the promise of great daughters.
- Emblem is the definition of balance with 12 EPDs in the top 20% of the breed and has a truly maternal pedigree anchored by Top Grade and Shear Force.

## BROWN RRR EMBLEM J3541



	DIRECT					MATERNAL					CARCASS				\$ INDEX	
	CE	BW	WW	YW	ADG	MCE	MILK	MWW	STAY	DOC	CW	YG	MARB	REA	API	TI
EPD	16.9	-2.5	87.2	136.3	0.31	7.7	27.8	71.4	19.8	12.8	32.8	-0.36	0.62	0.98	184.2	102.0
	0.48	0.51	0.49	0.49	0.49	0.30	0.25	0.34	0.36	0.46	0.45	0.36	0.43	0.43	-	-
RANK	3	4	20	15	15	20	20	15	15	35	40	80	2	30	1	2

HOOK'S BLACK HAWK 50B  
 SIRE: HOOK'S EAGLE 6E  
 HOOK'S CRYSTAL 1C

MCM TOP GRADE 018X  
 DAM: HRM MS TOP GRADE A310  
 WCS MS FORCE 807U



**SEMEN Call for Price**

Contact Allied to order semen.





## TJ GOLD 274G



Breed ACC EPD	DIRECT					MATERNAL					CARCASS					S INDEX	
	CE	BW	WW	YW	ADG	MCE	MILK	MWW	STAY	DOC	CW	YG	MARB	REA	API	TI	
	16.7	-3.4	79.7	122.4	0.27	7.3	25.5	65.3	17.7	13.6	24.5	-0.30	0.59	0.85	175.9	97.2	
	0.77	0.90	0.88	0.87	0.87	0.39	0.36	0.47	0.42	0.77	0.65	0.48	0.60	0.60	-	-	
	4	2	45	40	35	25	35	40	35	25	70	95	3	60	2	4	

## SEMEN Call for Price

Contact Allied to order semen.



HOOK'S BLACK HAWK 50B  
SIRE: HOOK'S EAGLE 6E  
HOOK'S CRYSTAL 1C

CCR SANTA FE 9349Z  
DAM: TJ 12C  
TJ MS 38W



Homozygous Black, Homozygous Polled || PB SM  
ASA# 3582577 DOB: 1/28/2019 Tattoo: 274G

Owned by:

ABS Global || River Creek Farms || All Beef LLC || Triangle J Ranch

- Gold daughters are simply special! Expect his maternal evaluation to continue to climb!
- Deep sided, feminine featured, highly valued females with wonderful, level floored udders are the norm and there are hundreds of them to prove it.
- Gold too has proven to be a great choice as a heifer bull for breeders to use. Easy calving and still make a calf with added value.
- Expect progeny that are relatively moderate for frame, with extra body volume and a clean level look from the side.



Gold Daughter At Eichacker Simmentals



Top Seller 2022 Great Lakes Beef Connection



Homozygous Black, Homozygous Polled || PB SM  
 ASA# 3563006 DOB: 3/11/2019 Tattoo: 442G

Owned by:  
 Hansen Simmental Ranch || Dakota Xpress

- Designed to be a model for producing great females, Falcon is proving to be all of that and more!
- From one of the great production cow families in the breed, his dam already has 6@110 for weaning and 5@117 for YW and his grand dam is 078X, enough said.



High selling Falcon son at Dakota Xpress



High selling son of Falcon from Quandt Brothers

- Falcon's performance proof is just as impressive with top 2% for YW EPD and top 1% for ADG.
- Expect fast growing calves that have tremendous depth, thickness and density.
- 14 traits in the top 15% of all Purebreds, nine of which rank in the top 5%.

	DIRECT					MATERNAL					CARCASS				S INDEX	
	CE	BW	WW	YW	ADG	MCE	MILK	MWW	STAY	DOC	CW	YG	MARB	REA	API	TI
EPD	14.7	-2.7	94.4	158.4	0.40	5.3	24.7	71.9	20.4	16.0	51.0	-0.44	0.42	1.38	177.4	102.2
ACC	0.66	0.80	0.76	0.75	0.75	0.37	0.26	0.38	0.38	0.63	0.60	0.46	0.56	0.56	-	-
RANK	15	3	10	2	1	60	45	15	10	10	3	40	10	1	2	2

HOOK'S BLACK HAWK 50B  
 SIRE: HOOK'S EAGLE 6E  
 HOOK'S CRYSTAL 1C

LRS CLASS ACT 606Z  
 DAM: LRS MS CLASS ACT 437B  
 LRS MS OLIE 078X



**SEMEN \$35**

Contact Allied to order semen.

**ORiGen** **ALLIED**  
 GENETIC RESOURCES





# BAS MONEY MAKER J801



Homozygous Black, Homozygous Polled || PB SM  
 ASA# 3978845 DOB: 2/20/2021 Tattoo: J801

Owned by:  
 Bielenberg Angus and Simmental

- Money Maker is extremely stout, long bodied, and packed with muscle and comes with great bone and large feet. His feet have a perfect angle and great claw.
- His first calves have been born unassisted and have a lot of vigor and are quick to start nursing. Calves are coming lighter than his sire's calves.
- From Money's dam to fourth grandam and dam's maternal sister's these have been as prolific a cow family as any. All females have raised all calves 100+ weaning ratio each year.
- Money Makers dam also has 5 females currently in production at Bielenberg Simmentals.

BANK ACC EPD	DIRECT					MATERNAL					CARCASS					S INDEX	
	CE	BW	WW	YW	ADG	MCE	MILK	MWW	STAY	DOC	CW	YG	MARB	REA	API	TI	
	12.4	-1.2	99.4	157.8	0.37	5.7	28.5	78.2	18.3	18.7	55.5	-0.46	0.57	1.45	176.2	106.8	
	0.47	0.51	0.49	0.49	0.49	0.29	0.24	0.32	0.36	0.45	0.44	0.35	0.41	0.42	-	-	
	35	10	3	2	2	55	15	3	30	1	2	30	3	1	2	1	

SEMEN \$25

Contact Allied to order semen.



HOOK'S BLACK HAWK 50B  
 SIRE: HOOK'S EAGLE 6E  
 HOOK'S CRYSTAL 1C

HOOK'S BEACON 56B  
 DAM: BAS MISS BEACON F801  
 3C CROCUS 6623D B

**ALLIED**  
 GENETIC RESOURCES

**ORigen**



D6623, Grandam of Money Maker



Homozygous Black, Homozygous Polled || PB SM  
 ASA# 3762939 DOB: 1/9/2020 Tattoo: 422H

Owned by:  
 Triangle J Ranch || Steve Harris

- Power is in his name and power is in everything about him!
- Massive thickness from end to end, he was a sale day favorite at Triangle J and one of the top sellers.
- Expect calves with similar thickness and body mass to his famous sire, but with a bit nicer look and more eye appeal.
- His outcross, Cornhusker sired dam is making a name for herself in the TJ donor pen for making both great sons and daughters.



Sire of Power Play



TJ 12D, Dam of Power Play

	DIRECT					MATERNAL					CARCASS				\$ INDEX	
	CE	BW	WW	YW	ADG	MCE	MILK	MWW	STAY	DOC	CW	YG	MARB	REA	API	TI
EPD	14.9	-2.0	86.2	128.0	0.26	5.8	26.1	69.1	12.9	14.8	43.0	-0.29	0.31	0.90	147.3	91.8
ACC	0.50	0.53	0.51	0.51	0.51	0.30	0.24	0.33	0.35	0.46	0.43	0.35	0.39	0.43	-	-
RANK	10	5	25	30	40	50	30	25	85	15	15	95	20	50	25	10

HOOK'S BLACK HAWK 50B  
 SIRE: HOOK'S EAGLE 6E  
 HOOK'S CRYSTAL 1C

TJ CORNHUSKER 226A  
 DAM: TJ 12D  
 TJ 14U

**TJ POWER PLAY 422H**



**SEMEN \$30**

Contact Allied to order semen.

**ORiGen** **ALLIED**  
 GENETIC RESOURCES



## IRON CREEK ANTHEM 14J



BARKS ACC EPD	DIRECT					MATERNAL					CARCASS				\$ INDEX	
	CE	BW	WW	YW	ADG	MCE	MILK	MWW	STAY	DOC	CW	YG	MARB	REA	API	TI
	15.7	-0.9	92.6	147.7	0.34	8.6	23.5	69.8	17.5	16.6	50.9	-0.44	0.71	1.43	183.3	105.7
	0.45	0.47	0.46	0.47	0.47	0.31	0.24	0.31	0.37	0.46	0.45	0.36	0.43	0.43	-	-
	10	15	10	10	5	10	55	20	40	5	3	40	1	1	1	1

SEMEN \$30

Contact Allied to order semen.



HOOK'S BLACK HAWK 50B

SIRE: HOOK'S EAGLE 6E

HOOK'S CRYSTAL 1C

HOOK'S BEACON 56B

DAM: KBHR MATRON OF HONOR F20Z

BAR CK MS X38 106Z

**ALLIED** **ORigen**  
 GENETIC RESOURCES

 Homozygous Black, Homozygous Polled || PB SM  
 ASA# 3935623 DOB: 3/3/2021 Tattoo: D014J

Owned by:

Beach Cattle Co || Iron Creek Cattle Co

- Anthem was one of the most inquired about bulls in the 2022 catalog.
- Now there is ample semen available and he is ready for wide use.
- Anthem currently has 9 traits ranked in the top 5 percent of the breed and nothing above average except back fat EPD, which is probably a really good thing.
- His donor dam has one of the most impressive EPD arrays of any in the breed and is a full sister to KBHR Cimmarron.
- Expect him to dominate genetic improvement for carcass traits as well.



Mother of Anthem



Sire of Anthem



Homozygous Black, Homozygous Polled || PB SM  
 ASA# 3796572 DOB: 2/8/2020 Tattoo: H0301

Owned by:

All Beef LLC || Altenburg Super Baldy Ranch || Lyman Livestock

- Proud is worth taking another look at in 2023 because of the impact he made with a limited crop in 2022.
- LRS Dutton was absolutely his first son to sell and promptly topped the 2023 Lassle sale at \$30,000. The second son to sell that day went to a breeder too.
- Slightly different from a pedigree perspective, he offers more size, growth and muscle than many other of today's Purebred options.
- Use American Proud to improve foot structure and soundness as well.
- Expect a significant amount of progeny PAP proof in 2023.



\$30,000 top seller from Lassle Ranch  
 Simmentals



	DIRECT					MATERNAL					CARCASS				S INDEX	
	CE	BW	WW	YW	ADG	MCE	MILK	MWW	STAY	DOC	CW	YG	MARB	REA	API	TI
EPD	13.4	0.0	87.5	135.3	0.30	5.8	28.2	71.9	18.9	14.5	31.0	-0.45	0.49	1.14	166.4	96.0
ACC	0.50	0.57	0.53	0.53	0.53	0.29	0.21	0.30	0.34	0.47	0.44	0.35	0.43	0.42	-	-
Rank	20	25	20	20	20	50	20	15	25	20	45	35	10	10	5	5

HOOK'S BLACK HAWK 50B  
 SIRE: ASR AMERICAN PATRIOT F843  
 ASR MS PRIMROSE D663

CCR COWBOY CUT 5048Z  
 DAM: ASR LITTLE DESI D6273  
 ASR LITTLE DESSI Z213



**SEMEN \$30**

Contact Allied to order semen.

**ORigen** **ALLIED**  
 GENETIC RESOURCES



## HA JUSTICE 30J



Homozygous Black, Homozygous Polled || PB SM  
 ASA# 3918028 DOB: 2/26/2021 Tattoo: 30J

Owned by:  
 All Beef LLC || Running Springs Cattle Company || Highland Acres

- JUSTICE was the high-selling bull at the Bred for Balance and one of the most intriguing bulls to sell in 2022.
- The purebred model of his sire, with an exceptional EPD profile that looks to add value to the beef industry at every stage of the production cycle.
- Combines extraordinary indexes and a balanced EPD profile with a highly functional, smooth-made phenotype.
- Out of a Tom Hook bred cow that excels in hoof and udder quality, along with excellent carcass spread and docility.
- A Right Choice G+ badge further support Justice's superior genetic potential making, him a must-use bull.
- First calves born have come easy and have had great calf vigor.

Breed ACC EPD	DIRECT					MATERNAL					CARCASS				\$ INDEX	
	CE	BW	WW	YW	ADG	MCE	MILK	MWW	STAY	DOC	CW	YG	MARB	REA	API	TI
	15.7	0.4	88.0	145.9	0.36	10.1	31.8	75.8	18.0	20.4	46.4	-0.23	1.02	0.99	196.7	109.2
	0.50	0.55	0.51	0.52	0.52	0.27	0.18	0.28	0.34	0.46	0.45	0.36	0.44	0.43	-	-
	10	30	20	10	3	3	5	10	30	1	10	99	1	30	1	1

## SEMEN \$30

Contact Allied to order semen.



BRIDLE BIT ECLIPSE E744  
 SIRE: HOOK'S GALILEO 210G  
 HOOK'S EVITA 18E

HOOKS SHEAR FORCE 38K  
 DAM: HOOK'S DACIA 14D  
 HOOKS ARIANA 58A

**ALLIED**  
 GENETIC RESOURCES

**ORigen**



Hooks's Galileo 210G, Sire of Justice



Homozygous Black, Homozygous Polled || PB SM  
 ASA# 3253795 DOB: 2/15/2017 Tattoo: 65E

Owned by:  
 All Beef LLC || Encore Cattle and Genetics || Hook Farms

- Encore has quietly become one of Beacon's most widely proven and consistent sons.
- Having bred cows for 2 seasons of every year since 2018, he looks like he could breed cows another 5 years with his athleticism and near perfect feet.



Donor female for JC Simmental in Michigan



Encore Son At Cow Camp Ranch

- Daughters are physically very attractive and he improved udders and longevity. Expect his STAY value to continue to improve. He is the kind you would just like 100 daughters of.
- Sons too are very easy to market with extra thickness and masculinity and more attractive features than most Beacon grandsons.



BRAIN, ACC.	DIRECT					MATERNAL					CARCASS				S INDEX	
	CE	BW	WW	YW	ADG	MCE	MILK	MWW	STAY	DOC	CW	YG	MARB	REA	API	TI
	12.5	-0.3	78.6	119.5	0.26	7.7	24.1	63.3	16.6	15.5	21.4	-0.55	0.49	1.32	157.7	90.6
	0.78	0.89	0.86	0.86	0.86	0.61	0.62	0.69	0.49	0.77	0.74	0.55	0.71	0.69	-	-
	30	20	50	45	40	20	50	50	50	10	80	4	10	2	15	15

HOOKS SHEAR FORCE 38K  
 SIRE: HOOK'S BEACON 56B  
 HOOKS ZAFIRAH 41Z

MR NLC ENTREPRENEUR 1227  
 DAM: HOOK'S CHATTER 63C  
 HOOK'S XCEPTION 51X



SEMEN \$25

Contact Allied to order semen.

ORigen **ALLIED**  
 GENETIC RESOURCES



## BRIDLE BIT GPS H078



Homozygous Black, Homozygous Polled || PB SM  
 ASA# 3724830 DOB: 2/16/2020 Tattoo: H078

Owned by:

Genex || All Beef LLC || Eichacker Simmental

- Great balance is the best way I can describe GPS and his progeny.
- Calves come easy, growth has exceeded expectations and his high STAY daughters are highly anticipated.
- His dam is a perfect structured female with wonderful feet and a great udder. She too contributes to GPS unique pedigree proposition.
- Physically, GPS is a quiet natured, tank of a bull with an immense rib and thickness.



Dam of GPS



GPS Daughter

BARKS ACC EPD	DIRECT					MATERNAL					CARCASS					S INDEX	
	CE	BW	WW	YW	ADG	MCE	MILK	MWW	STAY	DOC	CW	YG	MARB	REA	API	TI	
	12.3	-1.5	85.0	131.5	0.29	6.5	19.0	61.4	20.1	11.8	45.5	-0.21	0.35	0.84	159.9	90.4	
	0.60	0.67	0.63	0.63	0.63	0.35	0.26	0.36	0.38	0.49	0.51	0.40	0.48	0.47	-	-	
	35	10	30	25	25	40	90	60	10	50	10	99	15	65	10	15	

SEMEN \$30

Contact Allied to order semen.



HOOK'S YELLOWSTONE 97Y  
 SIRE: KOCH BIG TIMBER 685D  
 KOCH MS HOOKS BOY

CLRS DIVIDEND 405D  
 DAM: BRIDLE BIT MISS F840  
 BRIDLE BIT MISS B440

**ALLIED**  
 GENETIC RESOURCES

**GENEX**



Homozygous Black, Homozygous Polled || PB SM  
ASA# 3762999 DOB: 1/24/2020 Tattoo: 485H

Owned by:

Triangle J Ranch || Shannon Welsch || Terra Sol Beef || Schupback Farms LLC

- 50K calves are attractive, stout, sound structured and are commanding top prices because of their quality.
- Definitely a power bull for growth, thickness and bone he also promises maternal value at the highest levels.
- TJ Teardrop daughters are proving to be physically beautiful with



Sire of 50K



Full Sister to 50K

- tremendous udder quality and fleshing ability.
- For those looking to add milk to lower producing bloodlines, 50K also should do that to a high degree with a high producing pedigree for generations.



	DIRECT					MATERNAL					CARCASS				S INDEX	
	CE	BW	VVW	YW	ADG	MCE	MILK	MWW	STAY	DOC	CW	YG	MARB	REA	API	TI
EPD	7.7	1.9	85.2	132.9	0.30	3.1	36.2	78.7	23.7	16.4	29.5	-0.19	0.31	0.54	153.0	86.3
ACC	0.62	0.74	0.73	0.70	0.70	0.34	0.21	0.33	0.35	0.61	0.53	0.40	0.47	0.47	-	-
Rank	90	60	30	20	20	95	1	3	1	5	50	99	20	99	15	25

TJ MAIN EVENT 503B  
SIRE: TJ TEARDROP 783F  
TJ MS 38W

CCR COWBOY CUT 5048Z  
DAM: TJ 92C  
TJ 43Z



SEMEN \$30

Contact Allied to order semen.

ORigen **ALLIED**  
GENETIC RESOURCES



## CLRS JOHNNY WALKER 1049J



Homozygous Black, Homozygous Polled || PB SM  
 ASA# 3874317 DOB: 2/11/2021 Tattoo: CLRS1049J

Owned by:

Clear Springs Cattle || All Beef LLC || Gerloff Farms || McDonald Farms

- With a great first set of calves on the ground, expectations are getting even higher for Johnny Walker.
- A higher growth son of Guardian with significantly improved disposition Johnny Walker brings in 15 traits in the top 20% for breed improvement.
- The only mistake we made was not buying his dam Hook's Yuma 49Y the same day. Her progeny include: Hook's Evita 18E, Hook's Bounty, Hook's Freedom and she is the grand dam of Hook's Fantasia 94E and Hook's Galileo.
- Good luck Dakota and Blake with the Yuma donor.

BUNKER K&C EPD	DIRECT					MATERNAL					CARCASS				\$ INDEX	
	CE	BW	WW	YW	ADG	MCE	MILK	MWW	STAY	DOC	CW	YG	MARB	REA	API	TI
	13.8	-0.5	97.1	150.8	0.34	9.2	30.2	78.6	23.1	14.4	45.3	-0.40	0.50	1.20	180.7	102.8
	0.48	0.53	0.51	0.52	0.52	0.28	0.22	0.31	0.37	0.45	0.46	0.36	0.44	0.43	-	-
	20	20	4	4	5	10	10	3	1	20	10	60	10	5	2	2

SEMEN \$30

Contact Allied to order semen.



HOOK'S BEACON 56B  
 SIRE: CLRS GUARDIAN 317G  
 CLRS ALWAYS XCELLENT

HOOKS TITUS 31T  
 DAM: HOOK'S YUMA 49Y  
 HOOK'S UNIVERSAL 17U

**ALLIED** ORigen  
 GENETIC RESOURCES



Hook's Evita 18E, Maternal Sister to Johnny Walker



Homozygous Black, Homozygous Polled || PB SM  
 ASA# 3943843 DOB: 3/22/2021 Tattoo: J131

Owned by:

Clear Springs || Cow Camp Ranch || Kellers Broken Heart Ranch || Cotton-  
 wood Cattle Co

- Gunsmoke is unique, having structural integrity and hoof quality with added frame along with elite predictions for profitability!
- His dam is the beautiful and free moving E197 cow in the illustrious Keller donor line up.
- He stands down square off both ends with a level hip and



\$31,000 full sister to Gunsmoke



Dam of Gunsmoke

- tailhead, has a superb disposition and is solid black.
- Bulls like Gunsmoke are a rare find!!



	DIRECT					MATERNAL					CARCASS				S INDEX	
	CE	BW	WW	YW	ADG	MCE	MILK	MWW	STAY	DOC	CW	YG	MARB	REA	API	TI
EPD	12.3	-0.9	92.3	136.9	0.28	8.8	27.5	73.7	21.6	14.9	45.4	-0.29	1.02	1.07	201.1	111.8
ACC	0.46	0.50	0.52	0.53	0.53	0.26	0.18	0.28	0.35	0.49	0.46	0.37	0.44	0.44	-	-
RANK	35	15	10	15	30	10	25	10	4	15	10	95	1	15	1	1

WS PROCLAMATION E202  
 SIRE: LBRS GENESIS G69  
 LBR DIANA D69

HOOK'S BEACON S6B  
 DAM: KBHR E197  
 BAR CK MS X38 106Z



SEMEN \$40

Contact Allied to order semen.

ORigen **ALLIED**  
 GENETIC RESOURCES



## LBRS THOR J320



Homozygous Black, Homozygous Polled || PB SM  
 ASA# 3938653 DOB: 1/24/2021 Tattoo: J320

Owned by:  
 Schnabel Ranch || Little Bitterroot Simmental Ranch

- An absolute physical standout and top seller at Bulls of the Big Sky.
- Incredibly heavy muscled and powerfully constructed from every angle.
- Rugged and masculine design with a sleek front end and sheath
- Thor's top 1% Docility EPD is reinforced by his gentle demeanor.
- Elite WW, YW, ADG, Marb and REA figures make him a must use sire!

BULL KCC EPD	DIRECT					MATERNAL					CARCASS				S INDEX	
	CE	BW	WW	YW	ADG	MCE	MILK	MWW	STAY	DOC	CW	YG	MARB	REA	API	TI
	9.9	1.0	103.5	158.3	0.34	5.3	24.9	76.5	19.8	17.6	62.7	-0.23	0.45	1.08	164.4	101.2
	0.44	0.51	0.48	0.48	0.48	0.23	0.15	0.26	0.32	0.41	0.41	0.33	0.40	0.39	-	-
	70	40	2	2	5	60	40	5	15	2	1	99	10	15	10	2

## SEMEN \$30

Contact Allied to order semen.



WS PROCLAMATION E202  
 SIRE: LBRS GENESIS G69  
 LBR DIANA D69

KOCH LC MONTE 803U  
 DAM: KOCH MS MONTE LL  
 KOCH LIGHT 1109 917W

**ALLIED** ORigen  
 GENETIC RESOURCES



LBRS Genesis G69, Sire of J320



Homozygous Black, Homozygous Polled || 3/4 SM 1/4 AN  
 ASA# 4029546 DOB: 2/24/2022 Tattoo: JCD114K

Owned by:  
 Cow Camp Ranch || Rydeen Farms

- Introducing JC MR Pontiac 114K, the \$56,000 top seller at the 2023 Great Lakes Beef Connection bull sale.
- This son of the burgeoning legend, Gibbs 9114G Essential combined and attractive, no-hole phenotype with a tremendous array of genetic predictions.



Maternal sister to Pontiac



Sire of Pontiac

- With genomics included his percentile rankings are right at the edge of unbelievable.
- His dam is a prototype SimGenetic female as well. Right sized, attractive, easy fleshing and with really good feet and hoof structure.
- Worth sampling for sure, especially with the idea of creating unique Purebreds from this young  $\frac{3}{4}$  blood.

	DIRECT					MATERNAL					CARCASS				S INDEX	
	CE	BW	WW	YW	ADG	MCE	MILK	MWW	STAY	DOC	CW	YG	MARB	REA	API	TI
EPD	16.5	-2.4	87.5	141.5	0.34	10.7	22.3	66.0	20.1	15.6	39.2	-0.28	0.71	0.98	178.3	99.2
ACC	0.44	0.50	0.47	0.48	0.48	0.22	0.14	0.25	0.30	0.39	0.40	0.31	0.36	0.37	-	-
RANK	10	15	20	15	10	5	60	30	10	15	30	40	10	10	3	3

GIBBS 7382E BROAD RANGE  
 SIRE: GIBBS 9114G ESSENTIAL  
 GIBBS 7153E STAR 3136A

GIBBS 4475B PIRATE  
 DAM: FSCR D114 LUCILLE B089XP  
 FSCR B089 RKE 107



**SEMEN \$50**

Contact Allied to order semen.

**ORigen** **ALLIED**  
 GENETIC RESOURCES

**JC MR PONTIAC D114K**





## CLRS KING JAMES 616K



Homozygous Black, Homozygous Polled || PB SM  
 ASA# 4031931 DOB: 1/24/2022 Tattoo: CLRS 616K

Owned by:  
 Clear Springs || All Beef LLC || Genex

- Thank you to All Beef for your confidence in King James, the lot 1 bull from the 2023 Bred for Balance sale.
- King James is deep and wide and full bodied with an excellent hoof and disposition.
- His elite genomic predictions are among the best that any Genesis son has offer!
- Dam is a half sister to the great Guardian and Homeland.



Sire of Kings James



Maternal Brother to King James

BMS ACC EPD	DIRECT					MATERNAL					CARCASS					S INDEX	
	CE	BW	WW	YW	ADG	MCE	MILK	MWW	STAY	DOC	CW	YG	MARB	REA	API	TI	
	12.5	0.4	97.4	148.7	0.32	7.2	23.9	72.5	19.2	14.3	49.4	-0.26	0.95	0.90	192.8	111.3	
	0.43	0.46	0.45	0.46	0.46	0.23	0.15	0.25	0.34	0.42	0.41	0.33	0.40	0.41	-	-	
	30	30	4	5	10	25	50	15	20	20	4	99	1	50	1	1	

SEMEN \$30

Contact Allied to order semen.



WS PROCLAMATION E202  
 SIRE: LBRS GENESIS G69  
 LBR DIANA D69

GW-WBF SUBSTANCE 820Y  
 DAM: CLRS DORA 616D  
 CLRS ALWAYS XCELLENT

**ALLIED** ORigen  
 GENETIC RESOURCES



Homozygous Black, Homozygous Polled || PB SM  
 ASA# 4046516 DOB: 3/11/2022 Tattoo: 611K

Owned by:  
 All Beef LLC || Select Sires || Traunicht Simmentals

- Dutton is a tank of a bull with unlimited potential, out of a great young Eagle donor by the dam of LRS Falcon.
- Wonderful genetic values across the board are highlighted by extra reach for growth, maternal prowess and top-ranking carcass traits.



Sire of Dutton



LRS Ms Eagle 983G, Dam of Dutton

- Dutton came from a stand out flush that topped the 2023 Lassle Ranch Simmental Sale.
- The more Purebred bulls that have his combination of performance, body mass and structure, the better for the beef business!



	DIRECT					MATERNAL					CARCASS				S INDEX	
	CE	BW	VW	YW	ADG	MCE	MILK	MWW	STAY	DOC	CW	YG	MARB	REA	API	TI
EPD	12.0	0.0	94.9	151.8	0.36	4.7	26.6	74.0	18.3	14.9	53.1	-0.39	0.50	1.24	167.6	100.3
ACC	0.40	0.44	0.45	0.45	0.45	0.23	0.16	0.25	0.31	0.44	0.40	0.32	0.36	0.38	-	-
Rank	40	25	10	4	3	70	30	10	30	15	2	65	10	4	5	2

ASR AMERICAN PATRIOT F843  
 SIRE: ASR AMERICAN PROUD H0301  
 ASR LITTLE DESI D6273

HOOK'S EAGLE 6E  
 DAM: LRS MS EAGLE 983G  
 LRS MS CLASS ACT 437B



**SEMEN Call for Price**

Contact Allied to order semen.





## KBHR KEYNOTE K229



Homozygous Black, Homozygous Polled || PB SM  
 ASA# 4104347 DOB: 3/31/2022 Tattoo: K229

Owned by:

Clear Springs Cattle || Hook Farms || Highland Acres || Keller Broken Heart Ranch

- One of the most genetically advanced sire prospects to emerge from a prolific, breed leading cow family and pedigree.
- Maternal masterpiece setting breed leading standards for MCE, Milk, Stayability, Docility, and Marbling.
- Keynote possesses the "Cowboy Look" for a heifer bull sire and his Top Genomics "ACE" designation genomically validates his phenotype.
- Next generation PB Simmental sire propelling mating options for both phenotype and genotype to new beef industry levels.

BUNK & AC EPD	DIRECT					MATERNAL					CARCASS				\$ INDEX	
	CE	BW	WW	YW	ADG	MCE	MILK	MWW	STAY	DOC	CW	YG	MARB	REA	API	TI
	16.7	-4.0	86.9	135.4	0.30	11.5	28.7	72.1	25.7	15.5	39.8	-0.17	1.02	0.77	218.9	112.6
	0.45	0.48	0.51	0.51	0.51	0.27	0.21	0.29	0.35	0.48	0.46	0.37	0.43	0.44	-	-
	4	1	25	20	20	1	15	15	1	10	20	99	1	80	1	1

SEMEN \$30

Contact Allied to order semen.



HOOK'S BEACON 56B  
 SIRE: CLRS GUARDIAN 317G  
 CLRS ALWAYS XCELLENT

WS PROCLAMATION E202  
 DAM: KBHR DEBUTANTE H113  
 BAR CK MS X38 106Z

**ALLIED**  
 GENETIC RESOURCES

**ORigen**



Dam of Keynote



Homozygous Black, Homozygous Polled || PB SM  
 ASA# 4029480 DOB: 2/9/2022 Tattoo: JC758K

Owned by:  
 All Beef || Salinas Farms || JC Simmentals

- What a great opportunity to find this Purebred heifer bull at the 2023 Great Lakes Beef Connection Sale.
- No one sees this bull's mother and doesn't offer to buy her. One of the most perfect Cowboy Cut daughters ever created!
- Extremely quiet natured he was named for one of the best John



Maternal Grandam



Sire of 758K

- Wayne movies ever.
- Very high for Marbling, Stay CE and MCE puts him easily in the top 1% for \$API.
- Definitely one of the elite group of heifer bulls to sample in 2023.



	DIRECT					MATERNAL					CARCASS				S INDEX	
	CE	BW	WW	YW	ADG	MCE	MILK	MWW	STAY	DOC	CW	YG	MARB	REA	API	TI
EPD	16.5	-3.2	81.4	114.8	0.21	10.9	32.4	73.0	22.5	12.9	34.7	-0.22	0.67	0.83	187.1	99.4
ACC	0.45	0.47	0.50	0.51	0.51	0.27	0.20	0.29	0.35	0.44	0.44	0.36	0.41	0.42	-	-
RANK	4	2	40	55	75	1	4	10	2	35	30	99	2	65	1	3

HOOK'S BEACON 56B  
 SIRE: CLRS GUARDIAN 317G  
 CLRS ALWAYS XCELLENT

CCR COWBOY CUT 5048Z  
 DAM: J-J MS 8T COWGIRL 917G  
 TJ 8T



**SEMEN \$30**

Contact Allied to order semen.

**ORigen** **ALLIED**  
 GENETIC RESOURCES



## MR FR MIC CHECK K4



Homozygous Black, Homozygous Polled || PB SM  
 ASA# 4135893 DOB: 3/22/2022 Tattoo: K4

Owned by:  
 Schnabel Ranch || Flittie Ranch

- Here is your opportunity to get in on a son of MR SR MIC DROP that is virtually a carbon copy of his sire right down to his facial markings.
- MIC CHECK was only 72# at birth with incredible growth and a flawless EPD profile making him an exciting new spread bull to the industry.
- Tremendous foot and hoof quality, extra bold rib cage, deep flanked, yet very clean and refined through his front 1/3.
- His dam is an outstanding upcoming female in the Flittie herd and is sired by a flush mate to the dam of TJ GOLD.

Breed K4 EPD	DIRECT					MATERNAL					CARCASS				S INDEX	
	CE	BW	WW	YW	ADG	MCE	MILK	MWW	STAY	DOC	CW	YG	MARB	REA	API	TI
	13.8	-0.6	94.0	153.8	0.37	7.7	25.4	72.4	19.3	20.5	23.8	-0.44	-0.02	0.84	145.2	88.2
	0.42	0.48	0.47	0.47	0.47	0.21	0.15	0.25	0.29	0.43	0.38	0.31	0.34	0.37	-	-
	20	15	10	3	2	20	35	15	20	1	75	40	90	65	25	20

SEMEN \$30

Contact Allied to order semen.



MR SR 71 RIGHT NOW E1538  
 SIRE: MR SR MIC DROP G1534  
 MISS SR C1534

TJ 586C  
 DAM: MISS FR G942  
 MISS FRZ242

**ALLIED** ORigen  
 GENETIC RESOURCES



Sire of Mic Check



Homozygous Black, Homozygous Polled || PB SM  
 ASA# 4040505 DOB: 2/17/2022 Tattoo: 30K

Owned by:  
 Highland Acres || APEX Cattle

- Among the most talked about new sires for the 2023 breeding season with his exceptional arithmetic and elite herd sire quality.
- He is the 'true standout' Galileo son in terms of phenotype, balance, and his impressive genomic data!
- Great dispositioned, excellent feet and legs, deep ribbed and powered up with a wealth natural thickness.
- Breed him to an entire heifer crop, flush your best donors and breed a bunch of cows knowing that he will add value, quality and market returns to every calf he sires.
- Use the ASA Planned Mating calculator to see the kind of EPDs and Indexes projected on your females. The resulting data will be impacting, ahead of most any sire in the breed.
- For correct structured, great footed, docile progeny that have that extra volume, fleshing ability and eye appeal with breed



Sire of Covenant

pacesetting data...order plenty of his "high-quality" semen!

## HA COVENANT 30K



	DIRECT					MATERNAL					CARCASS				S INDEX	
	CE	BW	WW	YW	ADG	MCE	MILK	MWW	STAY	DOC	CW	YG	MARB	REA	API	TI
EPD	17.0	-0.5	90.0	141.2	0.32	10.5	23.5	68.5	21.2	20.0	36.9	-0.28	0.77	0.75	192.2	104.2
ACC	0.46	0.50	0.48	0.49	0.49	0.23	0.15	0.25	0.32	0.45	0.43	0.35	0.40	0.41	-	-
Rank	3	20	15	10	10	2	55	25	5	1	25	95	1	85	1	1

BRIDLE BIT ECLIPSE E744  
 SIRE: HOOK'S GALILEO 210G  
 HOOK'S EVITA 18E

GW-WBF SUBSTANCE 820Y  
 DAM: HOOK'S CERES 11C  
 HOOK'S SARITA 92Y



**SEMEN \$30**

Contact Allied to order semen.

**ORigen** **ALLIED**  
 GENETIC RESOURCES



# CAMP CROCKETT J1098



Homozygous Black, Homozygous Polled || PB SM  
 ASA# 3951474 DOB: 3/23/2021 Tattoo: J1098

Owned by:  
 Bridle Bit Simmentals || Campbell Ranch

- Outcross genetics in a physically beautiful and ultimately sound structured package and bred for no-frills performance.
- Selected out of another great group of bulls from Robert and Christy Campbell that not enough breeders get to see, Crockett brings the kind of Calving Ease and maternal longevity that we have come to expect from this great program.
- Spending his life in Ignacio, then Center, then Walsh Colorado Crockett has been thrived in harsh environments his whole life and emerged strong and impressive to see.
- The sire side too comes from rugged country and represents some of Nelson's best lines.
- A PAP of 39 at more than 8,000 feet of elevation, Crockett is a wonderful Purebred option for making SimAngus or Purebred cattle that thrive at higher altitude.

BUNK ACC EPD	DIRECT					MATERNAL					CARCASS				S INDEX	
	CE	BW	WW	YW	ADG	MCE	MILK	MWW	STAY	DOC	CW	YG	MARB	REA	API	TI
	17.1	0.1	78.7	120.8	0.26	11.0	21.3	60.6	19.9	11.8	20.8	-0.21	0.37	0.53	161.2	85.9
	0.42	0.47	0.44	0.44	0.44	0.22	0.15	0.25	0.30	0.16	0.38	0.30	0.34	0.36	-	-
	3	25	50	45	40	1	70	65	15	50	85	99	15	99	10	25

**SEMEN \$30**

Contact Allied to order semen.



NLC BREAK FREE 72W  
 SIRE: NLC EDGAR 1E  
 NLC X236

CCR COWBOY CUT 5048Z  
 DAM: CAMP MRS E745  
 CAMP AMY A307

**ALLIED**  
 GENETIC RESOURCES

**ORigen**



Homozygous Black, Homozygous Polled || PB SM  
ASA# 4065113 DOB: 1/19/2022 Tattoo: 505K

Owned by:  
Doug Ludwig || Triangle J Ranch

- As the Purebred feature of the record setting 2023 Triangle J Ranch bull sale, Kershaw is poised to make a difference.
- One of Gold's stoutest sons, the outcross dam side pedigree gives him and extra boost of value.
- Balanced trait improvement across the board with special



Sire of Kershaw



Maternal grandsire of Kershaw

- emphasis on Calving Ease, STAY, Marbling and profit promotion.
- With his pedigree and the cows represented, expectations are high for Kershaw as a front-line female maker.



EPD	DIRECT					MATERNAL					CARCASS				S INDEX	
	CE	BW	WW	YW	ADG	MCE	MILK	MWW	STAY	DOC	CW	YG	MARB	REA	API	TI
	15.0	-3.2	81.5	122.9	0.26	6.3	23.8	64.5	19.0	12.5	33.5	-0.41	0.45	0.96	169.1	94.5
ACC	0.44	0.46	0.45	0.45	0.45	0.26	0.18	0.26	0.31	0.41	0.41	0.33	0.38	0.39	-	-
RANK	10	2	40	40	40	40	50	45	20	40	35	55	10	35	4	10

HOOK'S EAGLE 6E  
SIRE: TJ GOLD 274G  
TJ 12C

CAMP CAMPBELL E737  
DAM: TJ 59H  
TJ 5F



SEMEN \$30

Contact Allied to order semen.

ORigen **ALLIED**  
GENETIC RESOURCES



# JC MR TOTAL POWER F113K



RANK ACC EPD	DIRECT					MATERNAL					CARCASS					S INDEX	
	CE	BW	WW	YW	ADG	MCE	MILK	MWW	STAY	DOC	CW	YG	MARB	REA	API	TI	
	17.0	-2.8	83.5	137.0	0.33	11.1	32.1	73.8	19.0	13.7	39.3	-0.40	0.57	1.27	180.2	100.0	
	0.44	0.48	0.49	0.49	0.49	0.25	0.16	0.26	0.34	0.43	0.42	0.34	0.40	0.41	-	-	
	3	3	35	15	10	1	4	10	20	25	20	60	3	3	2	3	

## SEMEN \$30

Contact Allied to order semen.



GIBBS 7382E BROAD RANGE  
SIRE: GIBBS 9114G ESSENTIAL  
GIBBS 7153E STAR 3136A

HOOK'S BEACON 56B  
DAM: HOOK'S FANTASIA 94F  
HOOK'S CELEBRITY 19C

**ALLIED** **ORigen**  
GENETIC RESOURCES

Homozygous Black, Homozygous Polled || PB SM  
ASA# 4029550 DOB: 2/24/2022 Tattoo: JCF113K

Owned by:  
Salinas Farms || J/C Simmentals

- Total Power is a physical beast of a young bull with an array of EPDs to improve about any female.
- Thick topped, wide based and stout at the ground, this masculine son of Essential offers both power and balanced profit.
- He offers 15 traits in the top 20% with absolutely no holes in his genetic profile.
- His young donor dam Fantasia 94F, is poised to set a new standard for Purebred females with her combination of physical value and futuristic genomic array.
- Darn good flush too with at least 4 breeder bulls out of the 5 offered.



Hook's Fantasia 94F, Dam of 113K



Gibbs 9114G Essential, Sire of 113K



Homozygous Black, Homozygous Polled || PB SM  
 ASA# 2854180 DOB: 2/17/2014 Tattoo: 56B

Owned by:

Koch Cattle || Gateway Simmental || Diamond Peak Cattle || Huntley Bros. || Hook Farms

- Beacon is just celebrating his 9th birthday and still sets the standard of across the board genetic improvement like few others can match even today.
- Consistent purebred calving ease at a level few other sires can match in any breed.

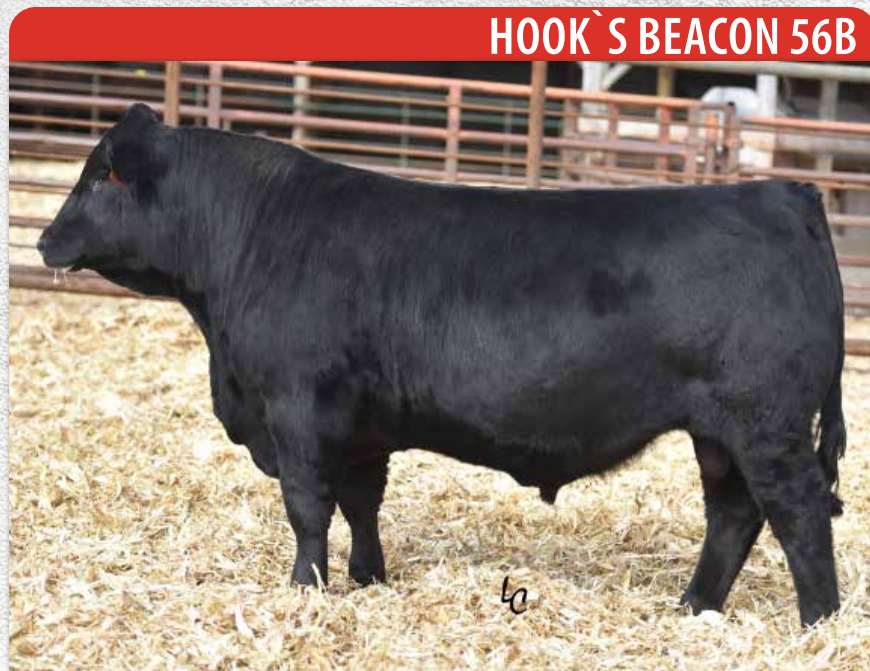


Hook's Encore, Son of Beacon.



KBHR Honor, son of Beacon

- Daughters are proving to be as expected with great longevity, feet and udders.
- Beacon has aged wonderfully and looks even better today than the day he sold.
- With so many great sons, we are now able to sell Beacon semen at a substantially reduced price especially for larger volumes and projects. Please give us a call for details.



	DIRECT					MATERNAL					CARCASS				S INDEX	
	CE	BW	WW	YW	ADG	MCE	MILK	MWW	STAY	DOC	CW	YG	MARB	REA	API	TI
EPD	17.0	-3.2	81.0	122.9	0.26	11.7	28.6	69.0	19.0	11.2	38.9	-0.47	0.73	1.64	187.3	102.2
ACC	0.89	0.96	0.95	0.94	0.94	0.85	0.89	0.91	0.76	0.90	0.83	0.61	0.80	0.81	-	-
Rank	3	2	40	40	40	1	15	25	20	60	20	25	1	1	1	2

NICHOLS LEGACY G151  
 SIRE: HOOKS SHEAR FORCE 38K  
 C&D TRACY

GW PREDESTINED 701T  
 DAM: HOOKS ZAFIRAH 41Z  
 HOOK'S UNO 54U



**SEMEN \$20**

Contact Allied to order semen.





## KBHR CIMARRON F151



BUNK & AC EPD	DIRECT					MATERNAL					CARCASS				S INDEX	
	CE	BW	WW	YW	ADG	MCE	MILK	MWW	STAY	DOC	CW	YG	MARB	REA	API	TI
	14.9	-3.5	64.1	98.4	0.21	11.4	25.1	57.1	19.4	11.8	26.6	-0.35	0.80	1.02	182.3	92.9
	0.72	0.82	0.80	0.79	0.79	0.45	0.36	0.46	0.43	0.65	0.65	0.48	0.60	0.59	-	-
	10	2	95	90	75	1	40	80	20	50	60	80	1	25	1	10

SEMEN \$25

Contact Allied to order semen.



HOOKS SHEAR FORCE 38K  
SIRE: HOOK'S BEACON 56B  
HOOKS ZAFIRAH 41Z

WS HOT BEEF X38  
DAM: BAR CK MS X38 106Z  
BAR CK MS MEAT MKR 323T

**ALLIED** ORigen  
GENETIC RESOURCES

Homozygous Black, Homozygous Polled || PB SM  
ASA# 3499731 DOB: 3/22/2018 Tattoo: F151

Owned by:  
All Beef LLC || Bridle Bit Simmental

- Cimarron is a slam dunk heifer bull that sires some of the most beautiful females you will find.
- Young daughters are deep, soft and have extra width to go along with an attractive profile, nice structure and improved genetic value every time.
- Bull calves make consistently nice heifer bulls for customers.
- The 106Z cow needs no introduction. Calves at Keller's include Global, Debutante, Medora, Bold Ruler, Matron of Honor, E197, High Heat and Quigley.



CLRS Jolene 1105J, Cimarron Daughter and top seller at Bred for Balance 2022



\$12,000 Cimarron at Bulls of the Big Sky



Homozygous Black, Homozygous Polled || PB SM  
 ASA# 3873147 DOB: 8/24/2020 Tattoo: 5065H

Owned by:  
 Cow Camp Ranch

- There have been many influential Beacon sons, but few have the power and great looking phenotype to match Kiowa.
- Unlike in some other breed choices, Simmental genetics that have great carcass traits often are some of the best cow makers. Kiowa will be one of those bulls.



Dam of Kiowa



CCR Bedrock 5171J, Maternal brother to Kiowa

- Balanced trait improvement with 14 traits in the top 1/3 of all Purebred choices.
- Kiowa should definitely improve feet and udders to promote longevity.



	DIRECT					MATERNAL					CARCASS				S INDEX	
	CE	BW	WW	YW	ADG	MCE	MILK	MWW	STAY	DOC	CW	YG	MARB	REA	API	TI
EPD	14.5	0.5	89.4	128.0	0.24	8.6	26.4	71.0	22.6	11.2	48.3	-0.37	0.62	1.40	179.6	98.6
ACC	0.49	0.50	0.53	0.54	0.54	0.34	0.31	0.38	0.43	0.51	0.50	0.40	0.47	0.48	-	-
BLVD	15	30	15	30	55	10	30	20	2	60	5	75	2	1	2	3

HOOKS SHEAR FORCE 38K  
 SIRE: HOOK'S BEACON 56B  
 HOOKS ZAFIRAH 41Z

CCR COWBOY CUT 5048Z  
 DAM: CCR MS 2073 COWBOY 5171C  
 CCR MS E-Z-3 2073Z



SEMEN \$30

Contact Allied to order semen.

ORigen **ALLIED**  
 GENETIC RESOURCES



# HOOK'S FREEDOM 45F



Homozygous Black, Homozygous Polled || PB SM  
 ASA# 3403357 DOB: 2/7/2018 Tattoo: 45F

Owned by:  
 All Beef LLC || Fred Smith Company Ranch || Top Genomics LLC || Hook Farms

- Freedom has been an underused growth and carcass improver with great young daughters coming into their own too.
- Expect calves to hit the ground growing with added muscle thickness and athleticism. Carcass data has been impressive as well.
- His first daughters are calf raisers with improved udders and carry no hair in southern climates.
- His dam, Hook's Yuma 49Y is simply a great cow!



Freedom Son at Fred Smith Company Ranch



Freedom Daughter at Great Lakes Beef Connection

BARKS ACC EPD	DIRECT					MATERNAL					CARCASS					S INDEX	
	CE	BW	WW	YW	ADG	MCE	MILK	MWW	STAY	DOC	CW	YG	MARB	REA	API	TI	
	13.0	0.0	93.7	154.6	0.38	9.3	30.2	77.0	18.3	16.7	41.2	-0.35	0.55	1.21	172.1	101.6	
	0.65	0.79	0.75	0.73	0.73	0.41	0.33	0.43	0.44	0.60	0.63	0.48	0.59	0.58	-	-	
	25	25	10	3	1	10	10	4	30	4	15	80	4	5	3	2	

SEMEN \$25

Contact Allied to order semen.



HOOKS SHEAR FORCE 38K  
 SIRE: HOOK'S BEACON 56B  
 HOOKS ZAFIRAH 41Z

HOOKS TITUS 31T  
 DAM: HOOK'S YUMA 49Y  
 HOOK'S UNIVERSAL 17U

**ALLIED** ORigen  
 GENETIC RESOURCES



Homozygous Black, Homozygous Polled || PB SM  
 ASA# 3866470 DOB: 2/19/2021 Tattoo: 16J

Owned by:  
 Hook Farms || Hall Stock Farm || Highland Acres

- Solid black (no white on underline) purebred standout combining a multitude of high-value phenotypic and genotypic traits.
- FOREFRONT stems from the most prolific Bred for Balance cow family for the generation of top-flight seedstock and stud bulls.
- Maternal value, stayability, udder quality and hoof integrity come



Hook's Galileo 210G, Maternal Sib to Forefront



Hook's Evita 18E, Dam of Forefront

- as standard equipment with this pedigree and genetic line.
- One of the most fault-free sire prospects with high genetic merit to emerge from the 2022 spring sale season.



	DIRECT					MATERNAL					CARCASS				S INDEX	
	CE	BW	VV	YW	ADG	MCE	MILK	MWW	STAY	DOC	CW	YG	MARB	REA	API	TI
EPD	12.6	1.6	90.7	141.6	0.32	8.4	33.1	78.4	16.6	13.2	30.3	-0.43	0.61	1.08	166.2	99.4
ACC	0.46	0.50	0.52	0.52	0.52	0.30	0.24	0.32	0.36	0.48	0.47	0.38	0.44	0.45	-	-
BLV	30	55	15	10	10	15	3	3	50	30	45	45	3	15	5	3

CDI MAINLINE 265D  
 SIRE: HOOK'S FRONTLINE 40F  
 HOOK'S CARINA 15C

HOOK'S BEACON 56B  
 DAM: HOOK'S EVITA 18E  
 HOOK'S YUMA 49Y



SEMEN \$30

Contact Allied to order semen.

ORigen **ALLIED**  
 GENETIC RESOURCES



# JC KING OF THE ROAD 468H



Breed ACE EPD	DIRECT					MATERNAL					CARCASS					S INDEX	
	CE	BW	WW	YW	ADG	MCE	MILK	MWW	STAY	DOC	CW	YG	MARB	REA	API	TI	
	14.6	-2.7	79.9	120.8	0.26	8.7	31.0	70.8	19.4	13.1	16.5	-0.39	0.55	0.81	173.0	95.9	
	0.62	0.64	0.68	0.64	0.64	0.35	0.27	0.37	0.39	0.47	0.51	0.39	0.48	0.48	-	-	
	15	3	45	45	40	10	10	20	20	30	95	65	4	70	3	5	

**SEMEN \$30**

Contact Allied to order semen.



HOOK'S BEACON 56B  
SIRE: KBHR HIGH ROAD E283  
WS MISS SUGAR C4

MCM TOP GRADE 018X  
DAM: JC MS TOP GRADE 468B  
HOOKS ZOLA 102Z

**ALLIED** **ORigen**  
GENETIC RESOURCES

Homozygous Black, Homozygous Polled || PB SM  
ASA# 3701283 DOB: 2/26/2020 Tattoo: JC468H

Owned by:  
J/C Simmental || Apex Cattle

- The breed's premier High Road son that offers extra body mass, depth, natural thickness, and overall power in a more moderate frame size than his sire.
- His offspring could not be more impressive. Born easily and exploding with impressive volume and thickness as they mature.
- Used on nearly over 200 yearling heifers, proving him as a "no worries" type calving ease sire.
- His excellent EPD profile is one of the breed's most impressive!
- Phenotypically, as a three year old, he has a wealth of total body mass, perfect feet and eye appeal.
- His predictable calving ease service on bred females will add value his daughters will make superb cows; and his low BW, high MARB, and big-numbered \$API sons are already sale pacesetters.
- Few bulls combine his calving ease, performance, maternal, and carcass traits at such an elite, balanced level. His structural integrity could not be better, excellent feet, joints, and legs.



Full brother, at Green Valley Farms



Son and top seller at APEX Cattle



Homozygous Black, Homozygous Polled || PB SM  
 ASA# 3789511 DOB: 3/24/2020 Tattoo: H124

Owned by:  
 Tri E Simmentals || Keller Broken Heart Ranch

- KBHR Handyman is an absolute beast of a Purebred bull and easily Sugar's widest bodied, heaviest ribbed son.
- On sale day, Handyman was a gentile tank of a bull admired by all who saw him for his potential to add performance, thickness and rib to every cow he mates.
- His Marbling and Rib Eye EPD complex is exceptional too, helping to push his \$API and \$TI indexes very high into the breed's top 1%.
- Definitely not just another Sugar son!



WS Sugar C4, Dam of Handyman



	DIRECT					MATERNAL					CARCASS				\$ INDEX	
	CE	BW	WW	YW	ADG	MCE	MILK	MWW	STAY	DOC	CW	YG	MARB	REA	API	TI
EPD	14.7	1.2	92.9	146.1	0.33	6.5	29.9	76.3	17.8	19.2	52.6	-0.33	0.88	1.04	187.2	107.4
ACC	0.47	0.51	0.52	0.52	0.52	0.30	0.25	0.33	0.36	0.49	0.47	0.37	0.45	0.44	-	-
RANK	15	45	10	10	10	40	10	5	35	1	3	90	1	20	1	1

J BAR J NIGHTRIDE 225Z  
 SIRE: TRPH RRR NIGHTFORCE B30  
 HRM MS SHEAR FORCE U814

CLRS GRADE-A 875 A  
 DAM: WS MISS SUGAR C4  
 WS ANISE A71



**SEMEN \$30**

Contact Allied to order semen.

**ORiGen** **ALLIED**  
 GENETIC RESOURCES



## KBHR PRIME CUT J160



BIRTH WT KSC EPD	DIRECT					MATERNAL					CARCASS					S INDEX	
	CE	BW	WW	YW	ADG	MCE	MILK	MWW	STAY	DOC	CW	YG	MARB	REA	API	TI	
	13.6	-1.0	89.8	144.6	0.34	7.2	27.6	72.5	20.5	17.0	51.9	-0.33	0.54	0.95	175.9	99.5	
	0.45	0.49	0.52	0.52	0.52	0.27	0.22	0.30	0.34	0.47	0.47	0.37	0.44	0.45	-	-	
	20	15	15	10	5	25	20	15	10	4	3	90	4	35	2	3	

## SEMEN \$30

Contact Allied to order semen.



HHS MR ENTOURAGE 867B  
SIRE: HHS MR 847D  
HHS MISS LUCKY AVA 847A

CLRS GRADE-A 875 A  
DAM: WS MISS SUGAR C4  
WS ANISE A71

**ALLIED** **ORigen**  
GENETIC RESOURCES

Homozygous Black, Homozygous Polled || PB SM  
ASA# 3943872 DOB: 3/24/2021 Tattoo: J160

Owned by:  
Scott Simenson || Kellers Broken Heart Ranch

- Primecut offers a little bit different twist genetically on the top side as a son of the great C4.
- A full brother to KBHR Revolution with more depth and softness designed for those not wanting any extra white.
- Expect lots of growth performance in his calves with a little extra frame and length.
- A member of the +100 \$TI club because of his prediction of performance, Marbling and Rib Eye, he still has STAY, MWW and Docility data to be envious of.



KBHR Sweet Sister, donor and full sister to J160



KBHR Revolution, Full brother to J160



Homozygous Black, Homozygous Polled || PB SM  
 ASA# 3943900 DOB: 3/25/2021 Tattoo: J188

Owned by:  
 Larson's Lost River Livestock || Kellers Broken Heart Ranch

- With 10 important trait EPDs in the top 10% or higher, Steakholder offers exceptional improvement for important growth, STAY and Marbling.
- Steakholder is truly impressive in person as well with wonderful depth, thickness and an attractive and valuable look.



WS Miss Sugar W4, Dam of J188



TJ Heisman 388F, Sire of J188

- Heisman has several great sons, but with Sugar as the dam, Steakholder has extra potential to make great cattle.
- As a G+ ATM sire on RightChoice, expect fast growing, heavy calves and productive, but powerful daughters.



RANK	EPD	DIRECT					MATERNAL					CARCASS				S INDEX	
		CE	BW	WW	YW	ADG	MCE	MILK	MWW	STAY	DOC	CW	YG	MARB	REA	API	TI
		12.4	0.7	94.1	149.4	0.35	6.8	28.2	75.2	22.7	15.5	43.5	-0.17	0.69	0.58	184.1	102.7
		0.47	0.51	0.53	0.53	0.53	0.30	0.25	0.33	0.37	0.49	0.48	0.38	0.46	0.46	-	-
		35	35	10	5	4	35	20	10	2	10	10	99	1	99	1	2

KOCH BIG TIMBER 685D  
 SIRE: TJ HEISMAN 388F  
 TJ 67D

CLRS GRADE-A 875 A  
 DAM: WS MISS SUGAR C4  
 WS ANISE A71

## KBHR STEAKHOLDER J188



**SEMEN \$30**

Contact Allied to order semen.

**ORiGen** **ALLIED**  
 GENETIC RESOURCES



## KBHR CHISUM H160



Homozygous Black, Homozygous Polled || PB SM  
 ASA# 3789547 DOB: 3/26/2020 Tattoo: H160

Owned by:  
 Bridle Bit Simmentals || Keller Broken Heart Ranch

- Our pick from Keller's bull sale in 2021.
- First calves come easy and have the look to be true-growth progeny.
- Perfect sire to add some frame and milk.



Daughter from Bridle Bit Simmentals



Daughter from Bridle Bit Simmental

DIRECT					MATERNAL					CARCASS					S INDEX	
CE	BW	WW	YW	ADG	MCE	MILK	MWW	STAY	DOC	CW	YG	MARB	REA	API	TI	
11.3	0.9	97.3	146.1	0.30	8.5	35.5	84.1	20.6	15.0	47.5	-0.32	0.49	1.01	167.6	100.1	
0.51	0.59	0.55	0.56	0.56	0.29	0.22	0.33	0.34	0.45	0.46	0.36	0.43	0.43	-	-	
50	40	4	10	20	10	1	1	10	15	5	90	10	25	5	3	

SEMEN \$30

Contact Allied to order semen.



CCR COWBOY CUT 5048Z  
 SIRE: WS PROCLAMATION E202  
 WS MISS SUGAR C4

GW NATIONAL 231C  
 DAM: KBHR E147  
 KBHR C404

**ALLIED**  
 GENETIC RESOURCES

**ORigen**



Homozygous Black, Homozygous Polled || PB SM  
 ASA# 3709371 DOB: 1/19/2020 Tattoo: CLRS8086H

Owned by:  
 Clear Spring Cattle || Keller Broken Heart Ranch || Gateway Simmental ||  
 All Beef LLC

- Beautiful first set of heifer calves and exceptional maternal potential set Hero apart.
- Out of Hook's Black Hawk with Eagle's mother as his grand dam.
- Super easy calving and his STAY EPD is extremely high with a +26 at printing.



Grandam of Hero



Daughter of Hero from Keller Broken Heart Ranch

- Hero had a very limited calf sample born in 2021, but was widely used in 2022. Expect significantly more data proof soon.



EPD	DIRECT					MATERNAL					CARCASS				S INDEX	
	CE	BW	WW	YW	ADG	MCE	MILK	MWW	STAY	DOC	CW	YG	MARB	REA	API	TI
	18.3	-4.0	63.8	101.8	0.24	9.0	17.1	48.9	25.2	1.4	17.3	-0.24	0.51	0.68	183.5	85.5
ACC	0.55	0.62	0.58	0.58	0.58	0.33	0.26	0.35	0.38	0.52	0.48	0.38	0.45	0.45	-	-
BLVD	2	1	95	85	55	10	95	99	1	99	95	99	5	95	1	25

HOOK'S XAVIER 14X  
 SIRE: HOOK'S BLACK HAWK 50B  
 HOOK'S YVETTE 100Y

CLRS DIVIDEND 405D  
 DAM: HOOK'S FLOURISH 86F  
 HOOK'S CRYSTAL 1C



SEMEN \$30

Contact Allied to order semen.

ORigen **ALLIED**  
 GENETIC RESOURCES



# HOOK'S FRONTLINE 40F



BARKER ACE EPD	DIRECT					MATERNAL					CARCASS					S INDEX	
	CE	BW	WW	YW	ADG	MCE	MILK	MWW	STAY	DOC	CW	YG	MARB	REA	API	TI	
	12.9	-1.0	71.9	114.4	0.27	6.8	31.9	67.8	18.6	14.4	21.8	-0.33	0.66	0.82	169.8	91.8	
	0.70	0.88	0.86	0.85	0.85	0.50	0.46	0.56	0.40	0.72	0.69	0.51	0.66	0.62	-	-	
	25	15	80	55	35	35	5	30	25	20	80	90	2	70	4	10	

## SEMEN Call for Price

Contact Allied to order semen.



TJ MAIN EVENT 503B  
SIRE: CDI MAINLINE 265D  
HOOK'S BEYONCE 82B

HOOKS SHEAR FORCE 38K  
DAM: HOOK'S CARINA 15C  
HOOK'S YEARN 39Y

**ALLIED**  
GENETIC RESOURCES



Homozygous Black, Homozygous Polled || PB SM  
ASA# 3403352 DOB: 2/4/2018 Tattoo: 40F

Owned by:

J/C Simmental || ABS Global || Hook Farms || All Beef LLC

- One of those bulls that everyone needs more daughters of!
- Deep, thick, moderate+ sized females that flesh extra easy and have great feet and udders. Model females are his legacy.
- Should be considered for wide scale use on commercial Angus females to make large numbers of ideal replacements.
- Bull calves are muscular and masculine like most great female sires and their feet are very good.



Frontline son at Barker Cattle Company



Son from JC Simmental



Homozygous Black, Homozygous Polled || PB SM  
 ASA# 3563707 DOB: 2/14/2019 Tattoo: 58G

Owned by:  
 Hook Farms

- Your search is over for a purebred Simmental calving ease sire for seedstock, commercial, and beef-on-dairy operations.
- Stems from a prolific, sound-uddered cow family that has placed several herdsires in registered herds.
- Greatest assets may well be maternal genetics with maternal



Hook's Full Figures, Maternal brother to Galant



Hook's Glacier, Maternal Brother to Galant

- CE, STAY, and docility all ranking in the top percentiles of the Simmental breed.
- Galant's hoof quality, stellar disposition, and top-ranking profit indexes further validate his merit as a premier herdsire to add value to your next calf crop.



	DIRECT					MATERNAL					CARCASS				S INDEX	
	CE	BW	VW	YW	ADG	MCE	MILK	MWW	STAY	DOC	CW	YG	MARB	REA	API	TI
EPD	16.2	-4.2	80.4	115.4	0.22	8.2	20.8	60.9	21.2	20.1	34.9	-0.30	0.63	0.99	184.2	98.3
RANK	0.61	0.66	0.62	0.61	0.61	0.35	0.28	0.38	0.39	0.50	0.51	0.41	0.49	0.49	-	-
ACC	5	1	45	55	70	15	75	60	5	1	30	95	2	30	1	3

HOOK'S BLACK HAWK 50B  
 SIRE: HOOK'S EAGLE 6E  
 HOOK'S CRYSTAL 1C

HOOKS SHEAR FORCE 38K  
 DAM: HOOK'S DOCILA 23D  
 HOOK'S YONKERS 21Y



SEMEN \$25

Contact Allied to order semen.

ORigen **ALLIED**  
 GENETIC RESOURCES



# TJ HEISMAN 388F



BUNK & AC EPD	DIRECT					MATERNAL					CARCASS					S INDEX	
	CE	BW	WW	YW	ADG	MCE	MILK	MWW	STAY	DOC	CW	YG	MARB	REA	API	TI	
	9.3	1.1	90.1	141.0	0.32	6.4	23.9	68.9	21.5	14.1	25.9	-0.18	0.60	0.39	169.9	96.5	
	0.72	0.86	0.84	0.84	0.84	0.54	0.47	0.56	0.40	0.72	0.71	0.53	0.69	0.64	-	-	
	75	45	15	10	10	40	50	25	4	20	65	99	3	99	4	5	

**SEMEN \$25**

Contact Allied to order semen.



HOOK'S YELLOWSTONE 97Y  
SIRE: KOCH BIG TIMBER 685D  
KOCH MS HOOKS BOY

CCR COWBOY CUT 5048Z  
DAM: TJ 67D  
TJ MISS 38S

**ALLIED** ORigen  
GENETIC RESOURCES

Homozygous Black, Homozygous Polled || PB SM  
ASA# 3459048 DOB: 1/10/2018 Tattoo: 388F

Owned by:

Cow Camp Ranch || All Beef LLC || Triangle J Ranch

- For those asking for more frame and growth as well as added phenotype, Heisman will deliver every time!
- Sires calves with a great, clean, level look and big time performance.
- Daughters have the kind of udders you would expect from a Big Timber x Cowboy Cut mating. Really nice and small teats.
- High growth, high marbling and high stay is a nice and proven combination.



KBHR Hartland, Herd Sire at Finke Cattle,  
Berthold, ND



KBHR Sweetness, Junior herdsire at Beach  
Cattle



Homozygous Black, Homozygous Polled || PB SM  
 ASA# 3741071 DOB: 2/2/2020 Tattoo: 018H

Owned by:  
 Ishee Simmental

- **BALDY ALERT!**
- Heifer bull genetics with outstanding CE and low birth weight EPD, good growth 66 lbs. birth weight to start.
- Strong maternal traits for MCE, Milk, MWW, Stay and his own docility is off the charts.



Trail Blazer calf



Trailblazer son and high seller at Double J Farms

- Excellent carcass potential-tops for Marbling with excellent \$API and \$ TI.
- Massive rib shape and extra deep flanked posted a 37.5cm.
- His baldy Dam trails back to Angus bull 10X.
- High seller at Ishee's, from a 40 year AI program.

## MR ISHEE TRIPLE TRAIL BLAZER



	DIRECT					MATERNAL					CARCASS				S INDEX	
	CE	BW	WW	YW	ADG	MCE	MILK	MWW	STAY	DOC	CW	YG	MARB	REA	API	TI
EPD	15.2	-2.1	71.5	100.1	0.18	8.2	23.3	59.0	17.4	11.8	13.4	-0.20	0.24	0.36	145.9	80.3
ACC	0.53	0.58	0.56	0.55	0.55	0.32	0.25	0.34	0.39	0.46	0.46	0.37	0.41	0.44	-	-
BLV	10	5	80	85	95	15	55	70	40	50	99	99	30	99	25	45

HOOK'S YELLOWSTONE 97Y  
 SIRE: KOCH BIG TIMBER 685D  
 KOCH MS HOOKS BOY

LRS TENX EXCELLANCE 352C  
 DAM: ISHEE MS EXCELLANCE 801  
 ISHEE MS CRITIDE 306A

**SEMEN \$30**

Contact Allied to order semen.

**ORiGen** **ALLIED**  
 GENETIC RESOURCES



# FIVE STAR JACKSON J10



Heterozygous Black, Homozygous Polled || PB SM  
 ASA# 3947790 DOB: 2/16/2021 Tattoo: J10

Owned by:  
 Drake Simmental || Iron Creek Cattle Co. || Five Star Ranch

- The next step in the relentless effort to advance beef genetics is to combine genomic excellence with phenotypic excellence and Five Star Jackson represents that progress. And he does so as an outcross to many of today's popular pedigrees, sired by Hook's Full Figures and out of KBHR F316.
- Jackson's genomically enhanced EPDs are as follows: Top 2% API (177) and TI (101), top 5% calving ease and maternal calving ease, top 15% weaning weight, yearling weight and maternal weaning weight, top 20% ADG and carcass weight and top 25%.
- Initial calving reports are consistently outstanding. Jackson's come easy, bounce off the ground, grow and have a great look. Over 30 calves born at Drakes and all unassisted.
- A stout, attractive genetically advanced bull that will improve looks and a broad base of numbers - an Elite Balance Bull.

EPD	DIRECT					MATERNAL					CARCASS				S INDEX	
	CE	BW	WW	YW	ADG	MCE	MILK	MWW	STAY	DOC	CW	YG	MARB	REA	API	TI
	16.1	-0.6	91.5	139.9	0.30	9.5	26.9	72.6	18.4	18.0	38.4	-0.29	0.61	0.94	177.1	101.4
DRAKE ACC	0.43	0.46	0.46	0.46	0.46	0.25	0.20	0.28	0.32	0.44	0.43	0.35	0.43	0.42	-	-
	5	15	15	15	20	5	25	15	30	2	20	95	3	40	2	2

SEMEN \$50

Contact Allied to order semen.



TJ DIPLOMAT 294D

SIRE: HOOK'S FULL FIGURES 11F  
 HOOK'S DOCILA 23D

WS ALL ABOARD B80

DAM: KBHR F316  
 KBHR C295

**ALLIED**  
 GENETIC RESOURCES

**ORigen**



Heterozygous Black, Homozygous Polled || PB SM  
 ASA# 3768626 DOB: 3/11/2020 Tattoo: 0107H

Owned by:  
 Beach Cattle Co || Ruby Cattle Co

- Wonderful phenotype improver and great calving ease out of the great Linda donor at Ruby Cattle Co.
- The very definition of a genetic spread bull with -2 for BW EPD, then +150 fo YW EPD!
- With his red gene available, he is an ideal choice for use to make a new generation of great red cattle.
- Several half brothers out of Linda were the talk of the 2023 Ruby sale with a top seller at \$80,000.
- Hitman also ranks in the top 1% for Docility.



KBHR Sniper E036, Sire of Hitman



	DIRECT					MATERNAL					CARCASS				S INDEX	
	CE	BW	WW	YW	ADG	MCE	MILK	MWW	STAY	DOC	CW	YG	MARB	REA	API	TI
EPD	21.7	-2.2	95.9	150.3	0.34	11.2	24.3	72.2	14.5	18.4	53.0	-0.50	0.22	1.34	161.7	97.8
ACC	0.51	0.56	0.54	0.54	0.54	0.28	0.22	0.31	0.33	0.47	0.46	0.36	0.42	0.43	-	-
RANK	1	5	5	4	5	1	45	15	70	1	2	15	35	1	10	4

BAR CK HUNTER 3006A  
 SIRE: KBHR SNIPER E036  
 KBHR C078

WS ALL-AROUND Z35  
 DAM: RUBYS LINDA 721E  
 RUBYS LINDA 341A



**SEMEN \$25**

Contact Allied to order semen.

**ORiGen** **ALLIED**  
 GENETIC RESOURCES



## DTR SOUTH FORTY 250J



Heterozygous Black, Homozygous Polled || PB SM  
 ASA# 3923055 DOB: 2/5/2021 Tattoo: 250J

Owned by:  
 Schnabel Ranch || Dale and Trent Ranch

- First calves avg 76# BW out of virgin heifers.
- Total outcross pedigree with NO Legacy or Shear Force.
- #4 highest API and #8 highest TI of all Ranch Hand progeny in the entire ASA database.
- Out of a no miss Makers Mark daughter with a 98 BW ratio and 106 WW ratio on 5 calves.
- Endless mating possibilities.

BUNK & AC EPD	DIRECT					MATERNAL					CARCASS				S INDEX	
	CE	BW	WW	YW	ADG	MCE	MILK	MWW	STAY	DOC	CW	YG	MARB	REA	API	TI
	17.4	-1.7	75.9	111.1	0.22	12.6	23.4	61.3	18.5	15.9	27.4	-0.35	0.09	0.75	145.2	79.9
	0.46	0.49	0.47	0.47	0.47	0.29	0.25	0.33	0.38	0.42	0.43	0.36	0.41	0.43	-	-
	2	10	60	65	70	1	55	60	25	10	60	80	65	85	25	45

SEMEN \$30

Contact Allied to order semen.



WHEATLAND BULL 131L  
 SIRE: SAND RANCH HAND  
 SAND LUCKY CHARMER

TJ MAKERS MARK 215Y  
 DAM: DATR MS MAGGIE 054C  
 FF LUCKY MAN X022

**ALLIED** GENETIC RESOURCES **ORigen**



Heterozygous Black, Homozygous Polled || PB SM  
 ASA# 4070715 DOB: 2/4/2022 Tattoo: 36K

Owned by:  
 Nuemann Farms || Wilkinson Simmentals

- Physically, Full Impact was among the greatest to sell in 2023.
- Absolutely no-holes phenotype with wonderful structure, feet, thickness and length of body.
- Though his growth and marbling are exceptional, it is his maternal pedigree that will ultimately demonstrate his value.
- Hook's Full figures daughters are among the best young cows you will find and Full Impact just takes those genetics one generation further.
- I would use this guy on red cows in a heartbeat to make the next great red Purebred!



Hook's Full Figures 11F, Sire of Full House



RANK	EPD	DIRECT					MATERNAL					CARCASS				S INDEX	
		CE	BW	WW	YW	ADG	MCE	MILK	MWW	STAY	DOC	CW	YG	MARB	REA	API	TI
		15.3	-0.8	88.5	140.4	0.32	8.7	27.5	71.7	19.8	13.6	40.8	-0.47	0.41	1.49	168.6	95.8
		0.47	0.51	0.47	0.47	0.47	0.26	0.19	0.27	0.32	0.40	0.43	0.35	0.43	0.42	-	-
ACC		10	15	20	15	10	10	25	15	15	25	15	25	10	1	4	5

TJ DIPLOMAT 294D  
 SIRE: HOOK'S FULL FIGURES 11F  
 HOOK'S DOCILA 23D

KRJ HZN DIRECT IMPACT F80S  
 DAM: WS HARPER H98  
 WS CASHMERE C29



**SEMEN \$30**

Contact Allied to order semen.

**ORiGen** **ALLIED**  
 GENETIC RESOURCES



# HOOK`S GALILEO 210G



Homozygous Black, Homozygous Polled || 3/4 SM 1/4 AN  
ASA# 3563620 DOB: 2/21/2019 Tattoo: 210G

Owned by:  
Highland Acres || Cow Camp Ranch || Hook Farms

- Progeny performance and scan data have driven Galileo's genetic profile to rival the best in the entire multi-breed IGS evaluation platform.
- EPD and actual performance profile project heifer bull potential, while not sacrificing growth, maternal, and carcass traits.
- Top tier STAY, Maternal, Docility, and \$ Index values give further credibility to the cow-herd-building potential of this Eclipse son.
- Dam is a high-performing Beacon daughter who is a maternal sister to AI sires: Hook's Bounty 6B, Hook's Freedom 45F, and CLRS Johnny Walker 1049J.
- First daughters have shown excellent maternal instincts with good teat size and tight udder suspension.



Bred Heifer from Cow Camp Ranch



HA Justice, Son of Galileo

BRAIN, ACC, EPD	DIRECT					MATERNAL					CARCASS				\$ INDEX	
	CE	BW	WW	YW	ADG	MCE	MILK	MWW	STAY	DOC	CW	YG	MARB	REA	API	TI
	16.2	-1.4	92.2	146.9	0.34	11.4	32.7	78.7	17.5	22.5	33.2	-0.20	1.20	0.60	198.9	113.5
	0.73	0.85	0.81	0.82	0.82	0.33	0.18	0.32	0.35	0.67	0.60	0.44	0.56	0.54	-	-
	15	25	10	10	10	3	2	2	25	1	50	65	1	65	1	1

SEMEN \$35

Contact Allied to order semen.



BRIDLE BIT CALVARY C503  
SIRE: BRIDLE BIT ECLIPSE E744  
BRIDLE BIT MISS A327

HOOK'S BEACON 56B  
DAM: HOOK'S EVITA 18E  
HOOK'S YUMA 49Y

**ALLIED** ORigen  
GENETIC RESOURCES



Homozygous Black, Homozygous Polled || 3/4 SM 1/4 AN  
 ASA# 3253742 DOB: 1/22/2017 Tattoo: 6E

Owned by:

Genex || Iron Creek Cattle || Triangle J Ranch || All Beef LLC || Hook Farms

- Easily the highest used SimGenetic bull over the past couple of years because the genetics just work.
- High satisfaction sire because every calf is thicker with more body and performance than their dam.
- Eagle too is one of the most prepotent sires for improved



Eagle Daughter from Great Lakes Beef Connection



IR/JLN Boomer, Son of Eagle

- disposition that you can use.
- Milk is creeping up with more daughter proof and udder quality is very good!
- Eagle sons will consistently sell at or near the top of your sale year in and year out.



RANK	EPD	DIRECT					MATERNAL					CARCASS				S INDEX	
		CE	BW	WW	YW	ADG	MCE	MILK	MWW	STAY	DOC	CW	YG	MARB	REA	API	TI
		14.1	-2.2	100.8	157.8	0.36	4.2	17.9	68.2	16.1	19.4	43.2	-0.44	0.62	1.33	167.1	104.3
		0.85	0.95	0.94	0.93	0.93	0.77	0.76	0.81	0.53	0.86	0.74	0.56	0.74	0.73	-	-
		30	15	2	2	5	90	90	20	40	2	20	5	15	1	10	1

HOOK'S XAVIER 14X  
 SIRE: HOOK'S BLACK HAWK 50B  
 HOOK'S YVETTE 100Y

GW-WBF SUBSTANCE 820Y  
 DAM: HOOK'S CRYSTAL 1C  
 HOOK'S UNDERESTIMATED 6U



**SEMEN Call for Price**

Contact Allied to order semen.

**GENEX**

**ALLIED**  
 GENETIC RESOURCES



# KBHR HARTLAND H100



Breed K C	DIRECT					MATERNAL					CARCASS					S INDEX	
	CE	BW	WW	YW	ADG	MCE	MILK	MWW	STAY	DOC	CW	YG	MARB	REA	API	TI	
	16.2	-2.0	75.1	116.7	0.26	10.3	29.9	67.4	21.2	16.1	25.3	-0.17	0.73	0.62	173.4	91.3	
	0.52	0.59	0.54	0.54	0.54	0.28	0.20	0.31	0.31	0.45	0.47	0.36	0.43	0.43	-	-	
Rank	15	20	55	55	55	10	10	25	4	10	75	70	10	65	4	15	

**SEMEN \$30**

Contact Allied to order semen.



KOCH BIG TIMBER 685D  
SIRE: TJ HEISMAN 388F  
TJ 67D

TRPH RRR NIGHTFORCE B30  
DAM: KBHR E084  
KBHR CLARA C093

**ALLIED** **ORigen**  
GENETIC RESOURCES

Homozygous Black, Homozygous Polled || 3/4 SM 1/4 AN  
ASA# 3789487 DOB: 3/23/2020 Tattoo: H100

Owned by:  
SRF Simmentals || Kellers Broken Heart Ranch

- A combination of dominant phenotype and breed improving EPDs make Hartland unique and special.
- Wonderful on the profile and extra long, his structure, levelness and balance made him a favorite at the 2021 KBHR bull sale.
- The maternal complex of EPDs is as good as you will find with top values for MCE, MWW, STAY and Doc.
- His young Nightforce sired dam already has 4 calves weaned to ratio 108.
- Use this unique pedigreed 3/4 blood to generate outcross purebreds for the future.



Sire of Hartland



Homozygous Black, Homozygous Polled || 3/4 SM 1/4 AN  
 ASA# 3912014 DOB: 2/9/2021 Tattoo: 31J

Owned by:  
**Mari Simmental || Wilkinson Farms**

- Though sampled by some serious breeders, primarily for outcross embryo production, Jesse James has not yet seen the kind of widespread use that his genetics deserve.
- With huge spread, plenty of growth, tremendous valuation for STAY and MB, his resulting \$ value indexes are as high as you will find.
- His pedigree is truly unique as well making him really flexible for making new purebred lines.
- Jesse James too is more useful from a size and performance standpoint that most of his good numbered paternal half sibs.
- Definitely worth using in 2023!



KBHR Quigley, Sire of Jesse James



BRAIN	ACC	DIRECT					MATERNAL					CARCASS				\$ INDEX	
		CE	BW	WW	YW	ADG	MCE	MILK	MWW	STAY	DOC	CW	YG	MARB	REA	API	TI
		16.8	-3.0	80.0	138.9	0.37	8.7	23.7	63.6	22.3	9.4	39.7	-0.35	0.93	0.86	206.7	106.5
		0.46	0.50	0.48	0.48	0.48	0.28	0.20	0.30	0.33	0.42	0.44	0.35	0.42	0.41	-	-
		10	10	40	15	4	20	45	40	2	85	30	20	2	20	1	1

BAR CK TEBOW 1006X  
 SIRE: KBHR QUIGLEY C154  
 BAR CK MS X38 106Z

CDI PRIME EXAMPLE 310D  
 DAM: LCDR MS GATES 49G  
 LCDR MS DEANNA 35D



**SEMEN \$30**

Contact Allied to order semen.

**ORigen** **ALLIED**  
 GENETIC RESOURCES



## MR ISHEE LIGHTS OUT 114J



Homozygous Black, Homozygous Polled || 3/4 SM 1/4 AN  
ASA# 3911170 DOB: 2/3/2021 Tattoo: 114J

Owned by:  
Ishee Bred Simmentals || Johnathan Abram

- One of the top SimAngus in the ASA data base with top 2% API and top 1% TI!
- He started small at 71 lbs at birth (ratio 91) to 1338 yearling wt. (ratio 111) with a large scrotal measurement at 37.5 cm.
- Use Lights Out 114J to improve all 18 EPD traits –from CE to Growth, Maternal and Carcass, use him on PB to make outstanding Simmentals or on Angus to make great SimAngus.
- A real beef machine who has a massive hip and top with lots of natural dimension of muscle, super soft centered and deep flanked, extremely docile!
- His moderate sized Graduate mother just does everything right with 3 AI calves in a row that wean at a high % of her body weight - efficiency !

BRAIN, ACC, EPD	DIRECT					MATERNAL					CARCASS				S INDEX	
	CE	BW	WW	YW	ADG	MCE	MILK	MWW	STAY	DOC	CW	YG	MARB	REA	API	TI
	15.9	-1.0	93.8	147.6	0.34	9.1	29.3	76.1	19.5	16.5	41.9	-0.32	0.58	0.91	180.0	103.2
	0.47	0.50	0.48	0.49	0.49	0.29	0.24	0.32	0.38	0.43	0.43	0.35	0.40	0.41	-	-
	15	30	10	10	10	15	10	3	10	10	25	25	15	15	2	1

**SEMEN \$30**

Contact Allied to order semen.



CCR COWBOY CUT 5048Z  
SIRE: WS PROCLAMATION E202  
WS MISS SUGAR C4

S D S GRADUATE 006X  
DAM: ISHEE MS GRADUATE 820  
ISHEE MS NIGHTRIDE 604

**ALLIED** ORigen  
GENETIC RESOURCES



Homozygous Black, Homozygous Polled || 3/4 SM 1/4 AN  
 ASA# 3909471 DOB: 1/19/2021 Tattoo: 504J

Owned by:

5N Farms || Greg Ahlemeyer || Eckhout Farms || Triangle J Ranch

- One of the highest growth and most powerfully designed TJ Gold son to date out of a really high producing outcross TJ New Time Line daughter.
- Gold sires great females every time but doesn't have too many sons with the extra frame and performance that Trooper brings.
- Trooper charts 10 economically important EPD trait in the top 20% or better.
- With 7 calves weaned @113 ratio Troopers dam has earned her spot among the elite females at Triangle J Ranch.



Trooper's Dam



3/4 SIMMENTAL

	DIRECT					MATERNAL					CARCASS				S INDEX	
	CE	BW	VW	YW	ADG	MCE	MILK	MWW	STAY	DOC	CW	YG	MARB	REA	API	TI
EPD	16.5	0.2	94.1	143.9	0.31	8.1	27.9	74.9	18.2	11.8	48.9	-0.14	0.39	0.94	152.7	91.4
ACC	0.43	0.47	0.50	0.51	0.51	0.25	0.18	0.27	0.32	0.42	0.43	0.33	0.38	0.40	-	-
RANK	10	50	10	10	25	30	15	4	20	60	10	80	40	15	20	15

HOOK'S EAGLE 6E  
 SIRE: TJ GOLD 274G  
 TJ 12C

TJ NEW TIME LINE 113X  
 DAM: TJ 52A  
 T J MISS DAY R1



SEMEN \$30

Contact Allied to order semen.

**ORigen** **ALLIED**  
 GENETIC RESOURCES



# SCHOOLEY KROWN 28K



Homozygous Black, Homozygous Polled || 3/4 SM 1/4 AN  
 ASA# 4115546 DOB: 2/14/2022 Tattoo: 28K

Owned by:  
 English Oaks Ranch || Schooley Cattle

- Top selling bull in Schooley Cattle sale for \$65,000 to English Oaks Ranch, AL.
- Recognized by many as the very best Revolution to surface from the highly anticipated KBHR Revolution H071.
- Stemming from the Infamous Schooley Miss 823F donor who is creating her own story.
- Krown should sire scale pounding progeny with added capacity, structural integrity, and unmatched phenotype.
- Excellent choice for adding WW,YW,IMF,API,TI while maintaining feet, legs, and joints.
- Froze semen first jump at 12 months.



Dam of Krown



KBHR Revolution H071, Sire of Krown

EPD	DIRECT					MATERNAL					CARCASS					S INDEX	
	CE	BW	WW	YW	ADG	MCE	MILK	MWW	STAY	DOC	CW	YG	MARB	REA	API	TI	
	13.7	-0.4	101.3	158.1	0.36	8.2	28.0	78.6	15.6	18.1	61.4	-0.13	0.86	0.88	174.3	108.0	
ACC	0.40	0.43	0.43	0.43	0.43	0.21	0.14	0.23	0.30	0.40	0.39	0.32	0.37	0.37	-	-	
BLV	35	40	2	2	5	30	15	2	45	3	2	80	3	20	3	1	

SEMEN \$50

Contact Allied to order semen.



HHS MR 847D  
 SIRE: KBHR REVOLUTION H071  
 WS MISS SUGAR C4

G A R PROPHET  
 DAM: SCHOOLEY MISS 3000A 823F  
 CCR MS SINGLETARY 3000A

**ALLIED** ORigen  
 GENETIC RESOURCES



Homozygous Black, Homozygous Polled || 3/4 SM 1/4 AN  
ASA# 4028670 DOB: 9/10/2021 Tattoo: 4142J

Owned by:  
Cow Camp Ranch || T-Heart Ranch

- A true dual purpose herdsire who will add value to terminal bound progeny while siring the type of females who will keep you in business for years to come.
- The most maternally focused Genesis's son on the market! El Dorado ranks in the Top 4% for Stay, Top 15% for Milk and Top



CCR Waco 4142G, Maternal brother to El Dorado



CCR Cochise 4142H, Maternal brother to El Dorado

- 10% for MWW. While still have the growth and power which has made his sire so famous.
- EL Dorado's dam is as a high proof of a SimAngus cow as you will find. Raising former high sellers CCR Waco and CCR Cochise. Likewise, each one of her high demand sons were raised as natural calves.
- In terms of physical appeal, one will be hard pressed to find a bull who is more athletic on the move while have picture perfect feet.



BRAIN	DIRECT					MATERNAL					CARCASS				S INDEX	
	CE	BW	WW	YW	ADG	MCE	MILK	MWW	STAY	DOC	CW	YG	MARB	REA	API	TI
	14.8	-0.9	86.1	129.3	0.27	8.0	28.1	71.1	21.0	10.4	51.9	-0.08	0.98	0.69	186.1	101.8
	0.45	0.50	0.48	0.49	0.49	0.23	0.14	0.25	0.31	0.40	0.42	0.33	0.38	0.39	-	-
	25	30	20	30	50	30	15	10	4	75	10	90	2	50	1	2

WS PROCLAMATION E202  
SIRE: LBR5 GENESIS G69  
LBR DIANA D69

CCR CATALYST 7035W  
DAM: CCR MS CATALYST 4142B  
CCR MS E-Z-3 2073Z

CCR THR EL DORADO 4142J



SEMEN \$30

Contact Allied to order semen.

ORigen **ALLIED**  
GENETIC RESOURCES



# CIRCLE COMPASS J258



Homozygous Black, Homozygous Polled || 3/4 SM 1/4 AN  
 ASA# 4019611 DOB: 8/8/2021 Tattoo: J258

Owned by:  
 Andresen Cattle Co || Circle Ranch

- High Selling Lot 1 feature of the Beef Solutions bull sale.
- An Outcross pedigree from the model Circle Ranch Sim-Angus Cow "G78."
- Impressive base width and body dimension in a moderate, masculine package that reads like a cow maker with his wide chest, correct shoulder, bold rib, and perfect hip design.
- Unmatched hoof quality, and shape.
- Calving Ease, Docile Temperament, Maternal - the cowboy kind.

EPD ACC RANK	DIRECT					MATERNAL					CARCASS					S INDEX	
	CE	BW	WW	YW	ADG	MCE	MILK	MWW	STAY	DOC	CW	YG	MARB	REA	API	TI	
	15.0	-2.5	78.5	120.4	0.26	9.3	22.7	61.9	16.1	13.1	37.4	-0.25	0.41	1.01	146.8	85.5	
	0.46	0.49	0.46	0.46	0.46	0.25	0.17	0.27	0.32	0.39	0.41	0.33	0.36	0.39	-	-	
	20	15	45	45	55	15	55	50	40	40	35	45	40	10	25	30	

SEMEN \$25

Contact Allied to order semen.



CCR WIDE RANGE 9005A  
 SIRE: GIBBS 7382E BROAD RANGE  
 SSF BLK LOUISE Y534

CIRCLE THE BASES D384  
 DAM: CIRCLE THE BASES G78  
 CIRCLE W172 Z25

**ALLIED** ORigen  
 GENETIC RESOURCES



Quarter view of Compass



Homozygous Black, Homozygous Polled || 3/4 SM 1/4 AN  
 ASA# 4031976 DOB: 1/19/2022 Tattoo: CLRS 956K

Owned by:  
 Clear Springs Cattle || Valigura Simmental

- Thank you Valigura Simmentals for your purchase of Kangaroo in the 2023 Bred for Balance sale!
- Kangaroo will add frame, growth and carcass merit like few bulls can. He has all the traits that make feeder cattle profitable without sacrificing maternal quality.
- Long, extended and clean made with a big square hip in him. He is a standout out for his calm disposition as well!



Sire of Kangaroo



3/4 SIMMENTAL

	DIRECT					MATERNAL					CARCASS				S INDEX	
	CE	BW	VW	YW	ADG	MCE	MILK	MWW	STAY	DOC	CW	YG	MARB	REA	API	TI
EPD	14.2	0.6	100.5	172.0	0.45	9.5	24.3	74.6	17.8	15.6	62.4	-0.30	0.77	1.28	187.4	110.2
ACC	0.44	0.50	0.48	0.48	0.48	0.23	0.13	0.24	0.30	0.41	0.40	0.32	0.39	0.39	-	-
Rank	30	60	2	1	1	15	40	4	25	15	2	30	5	1	1	1

GIBBS 7382E BROAD RANGE  
 SIRE: GIBBS 9114G ESSENTIAL  
 GIBBS 7153E STAR 3136A

HOOK'S CAPITALIST 37C  
 DAM: CLRS GLAMOR 956G  
 CLRS AIM XCELLENCE 306 A



SEMEN \$30

Contact Allied to order semen.

ORigen **ALLIED**  
 GENETIC RESOURCES



# CLRS INSPIRED 0110K



Homozygous Black, Homozygous Polled || 3/4 SM 1/4 AN  
 ASA# 4031996    DOB: 1/18/2022    Tattoo: CLRS0110K

Owned by:  
 Clear Springs cattle || JC Simmentals || Advanced Beef Genetics ||

- Thank you Advanced Beef Genetics and JC Simmental for your purchase of Inspired in the 2023 Bred for Balance sale!
- May be the most attractive Beacon son yet, his dam is a full sister to CLRS Homeland 327H.
- His elite carcass predictions are unmatched in the ASA database, the only bull with his YG, Marbling and REA combination. All while maintaining a top 1% STAY.

RANK	RANK	DIRECT					MATERNAL					CARCASS				S INDEX	
		CE	BW	WW	YW	ADG	MCE	MILK	MWW	STAY	DOC	CW	YG	MARB	REA	API	TI
		17.0	-2.2	76.4	119.4	0.27	11.3	21.9	60.1	23.0	11.5	36.8	-0.43	0.92	1.40	191.4	97.8
0.49	0.52	0.50	0.51	0.51	0.32	0.26	0.34	0.39	0.45	0.47	0.37	0.45	0.44	-	-		
10	15	50	50	50	3	65	60	1	65	35	5	2	1	1	3		

SEMEN \$35

Contact Allied to order semen.



HOOKS SHEAR FORCE 38K  
 SIRE: HOOK'S BEACON 56B  
 HOOKS ZAFIRAH 41Z

REDHILL 672X X004 231A  
 DAM: CLRS HANOI 0110H  
 CLRS ALWAYS XCELLENT



Dam of Inspired



Homozygous Black, Homozygous Polled || 3/4 SM 1/4 AN  
 ASA# 3975135 DOB: 4/5/2021 Tattoo: J866

Owned by:  
 Schnabel Ranch

- Legacy free outcross growth pedigree.
- Big spread bull with growth and great carcass.
- Out of a beautifully uddered young female with a bright future ahead of her.
- 15 traits in the top 35% and 8 of them in the top 5%.



Jacked Up has plenty of power from any angle!



	DIRECT					MATERNAL					CARCASS				S INDEX	
	CE	BW	VW	YW	ADG	MCE	MILK	MWW	STAY	DOC	CW	YG	MARB	REA	API	TI
EPD	14.5	0.6	91.2	148.2	0.36	6.7	29.3	74.8	21.9	16.4	57.4	-0.25	0.55	0.87	166.4	94.0
ACC	0.41	0.47	0.44	0.45	0.45	0.21	0.14	0.24	0.27	0.38	0.38	0.31	0.36	0.36	-	-
RANK	25	60	10	10	5	55	10	4	2	10	3	45	20	20	10	10

CDI MAINLINE 265D  
 SIRE: HOOK'S FOCAL POINT 212F  
 HOOK'S ULTIMO 14U

BALDRIDGE COMPASS C041  
 DAM: MISS FR F866  
 MISS FR D666



**SEMEN \$30**

Contact Allied to order semen.

**ORiGen** **ALLIED**  
 GENETIC RESOURCES



# GW OUTBACK 485F



DIRECT					MATERNAL					CARCASS				S INDEX	
CE	BW	WW	YW	ADG	MCE	MILK	MWW	STAY	DOC	CW	YG	MARB	REA	API	TI
15.0	1.1	91.6	138.9	0.30	9.9	27.0	72.7	13.6	9.5	50.4	-0.28	0.50	0.79	145.3	91.8
0.55	0.70	0.65	0.64	0.64	0.32	0.27	0.39	0.33	0.39	0.48	0.37	0.40	0.45	-	-
20	70	10	15	30	10	20	10	70	85	10	40	25	30	30	10

**SEMEN \$25**

Contact Allied to order semen.



LCS G-FORCE G45  
SIRE: LANCASTER ENFORCER K25  
LCS H376

GW PREDESTINED 701T  
DAM: GW MISS GPRD 298Z  
GW MISS POWER 233M

**ALLIED** **ORigen**  
GENETIC RESOURCES

Homozygous Black, Homozygous Polled || 3/4 SM 1/4 AN  
ASA# 3389831 DOB: 2/18/2018 Tattoo: 485F

Owned by:  
All Beef LLC || Robert Campbell || Gateway Simmental

- Outback just keeps producing outcross genetics with the extra growth that so many are focusing on.
- With an absolutely unique pedigree and as a 3/4 blood, making very unique and high quality new Purebreds is a reality.
- Expect calves to be in excess of 6 frame with tremendous length and soundness.
- Outback sons have PAP scored very well at 8,000 feet for the T Heart Sale.



Son from Campbell Simmental 2023



Son of Outback at Campbell Simmental, PAP 39



Homozygous Black, Homozygous Polled || 3/4 SM 1/4 AN  
 ASA# 3403314 DOB: 1/16/2018 Tattoo: 2F

Owned by:  
 All Beef LLC || JC Simmental || Hook Farms

- Flint has earned a reputation as one of the easiest calving bulls you can use that makes physically beautiful daughters and sons.
- Clean fronted, tremendously sound and thick these calves will catch your eye.
- First daughters are good looking and good producing.
- Flint, too, has been sampled in large dairies with a high level of satisfaction, even on Jersey females.



Flint Son from Long Simmental



Son from JC Simmental

## HOOK'S FLINT 2F



3/4 SIMMENTAL

	DIRECT					MATERNAL					CARCASS				S INDEX	
	CE	BW	WW	YW	ADG	MCE	MILK	MWW	STAY	DOC	CW	YG	MARB	REA	API	TI
EPD	21.3	-7.5	50.3	76.8	0.17	13.9	24.1	49.2	16.5	11.5	-6.7	-0.21	0.88	0.56	178.6	86.5
ACC	0.64	0.73	0.69	0.69	0.69	0.39	0.29	0.40	0.42	0.54	0.61	0.48	0.59	0.59	-	-
Rank	1	1	99	99	99	1	45	99	35	65	99	60	3	75	2	25

HOOKS SHEAR FORCE 38K  
 SIRE: HOOK'S BEACON 56B  
 HOOKS ZAFIRAH 41Z

W/C UNITED 956Y  
 DAM: HOOK'S DANISHA 116D  
 HOOK'S ZEST 35Z



**SEMEN \$25**

Contact Allied to order semen.

**ORigen** **ALLIED**  
 GENETIC RESOURCES



# REDHILL BURLEY 99J



Red, Homozygous Polled || PB SM

ASA# 3953952

DOB: 1/18/2021

Tattoo: 99J

Owned by:

All Beef LLC || Genex || JC Simmentals || Redhill Farms || T Heart Ranch

- We are extremely excited to have this new and complete red Purebred addition for the 2023 directory.
- He's easy to look at, very athletic and has wonderful thickness. He just physically has no holes.
- Burley boasts 11 traits in the top 15% of Purebreds and has exceptional across the board EPD balance.
- Coming from the fescue-based Redhill program, you already know he is wonderfully slick haired and has a great female behind him. (6 calves @108 for WW).

EPD	DIRECT					MATERNAL				CARCASS				S INDEX		
	CE	BW	WW	YW	ADG	MCE	MILK	MWW	STAY	DOC	CW	YG	MARB	REA	API	TI
	17.9	-0.9	86.7	125.2	0.24	10.0	30.1	73.3	20.1	15.3	37.4	-0.42	0.53	1.11	176.0	97.4
ACC	0.45	0.48	0.49	0.50	0.50	0.27	0.23	0.31	0.34	0.46	0.43	0.34	0.42	0.41	-	-
Rank	2	15	25	35	55	3	10	10	10	10	25	50	5	15	2	4

SEMEN \$30

Contact Allied to order semen.



CDI VERDICT 220Y  
SIRE: CDI SECRET AGENT 407C  
CDI MS BEEF KING 43A

WS BEEF MAKER R13  
DAM: REDHILL W107 153X 257B  
REDHILL 701T 219K 153X

**ALLIED**  
GENETIC RESOURCES

**ORigen**



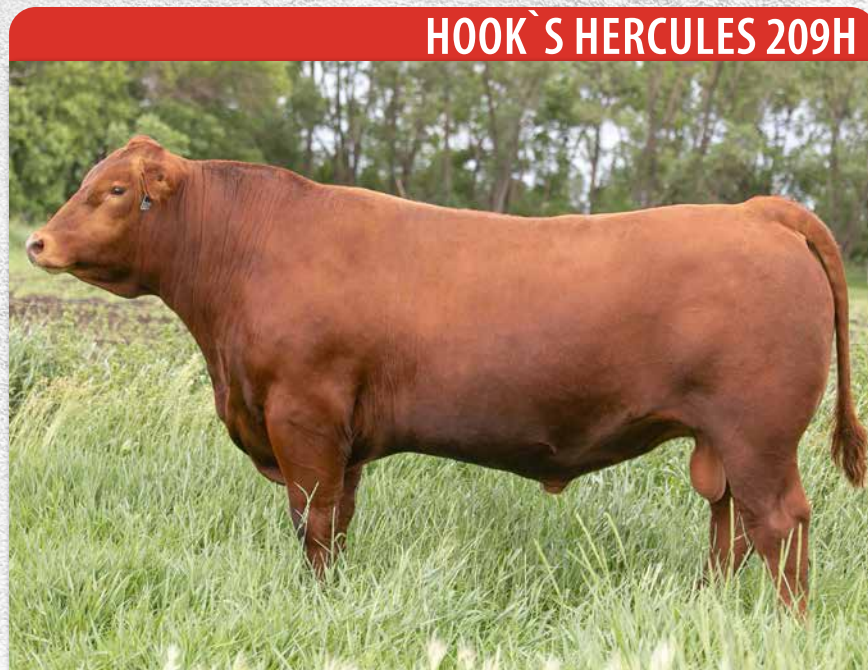
Red, Homozygous Polled || PB SM  
 ASA# 3715245 DOB: 2/18/2020 Tattoo: 209H

Owned by:  
 Hook Farms || One Penny Ranch

- Dark red calving ease sire prospect exhibiting tremendous type and maternal potential.
- Beautiful, calm dispositioned Prime Time-sired dam was an outstanding member of the Bred for Balance Fab 5 in 2018.
- The next step in red genetics for adding Calving Ease, STAY, hoof quality, and \$Profit Index Values.
- Heifer safe "ACE" designation through genomic evaluation by Top Genomics, LLC.



CLRS 729E, Dam of Hercules



	DIRECT					MATERNAL					CARCASS				S INDEX	
	CE	BW	WW	YW	ADG	MCE	MILK	MWW	STAY	DOC	CW	YG	MARB	REA	API	TI
EPD	17.0	-0.5	76.3	120.3	0.27	9.7	21.2	59.3	22.8	12.0	39.7	-0.26	0.57	0.81	179.2	90.8
ACC	0.47	0.51	0.49	0.49	0.49	0.29	0.25	0.33	0.34	0.46	0.44	0.35	0.42	0.42	-	-
Rank	3	20	60	45	35	4	70	70	2	45	20	99	3	70	2	15

IR IMPERIAL B772  
 SIRE: IR IMPERIAL D948  
 IR MS DUAL FOCUS W086

WS PRIME TIME B6  
 DAM: CLRS ELATED 729E  
 CLRS CRIMSON 516 C



**SEMEN \$25**

Contact Allied to order semen.

**ORigen** **ALLIED**  
 GENETIC RESOURCES



# HSF CARDINAL 133G



Red, Homozygous Polled || PB SM

ASA# 3749672

DOB: 9/17/2019

Tattoo: 133G

Owned by:

All Beef LLC || Hofmann Simmental Farms || Rymo Cattle Company

- Cardinal simply checks a lot of boxes for balanced improvement and genetic diversity on the red genetic side.
- Solid CE with breed average growth, wonderful STAY, Doc, Marbling and REA EPDs puts him in the top 10% for \$API and makes him nicely complimentary to todays popular red lines.
- Physically, Cardinal is a super sound, quiet natured bull that is very smooth and deep on the profile with plenty of thickness behind.
- With his ER Big Sky dam and the udder quality of Imperial females we are expecting great things maternally.



Cardinal Son at Hofmann Simmental Farms



Cardinal Son at Eichacker Simmentals

EPD	DIRECT					MATERNAL					CARCASS					S INDEX	
	CE	BW	WW	YW	ADG	MCE	MILK	MWW	STAY	DOC	CW	YG	MARB	REA	API	TI	
	15.5	-1.7	74.6	117.2	0.27	9.1	23.8	61.0	18.7	15.6	20.5	-0.41	0.38	0.98	160.7	87.2	
ADG	0.60	0.73	0.67	0.65	0.65	0.33	0.21	0.33	0.34	0.45	0.49	0.38	0.43	0.46	-	-	
DOC	10	10	70	50	35	10	50	60	25	10	85	55	15	30	10	20	

SEMEN \$30

Contact Allied to order semen.



IR IMPERIAL B772  
SIRE: IR IMPERIAL D948  
IR MS DUAL FOCUS W086

ER BIG SKY S45B  
DAM: HSF MISS SKY 595 64Z  
HSF FORTUNATAS QUO 59S

**ALLIED**  
GENETIC RESOURCES

**ORigen**



Red, Homozygous Polled || PB SM  
 ASA# 4104220 DOB: 3/21/2022 Tattoo: K102

Owned by:  
 All Beef LLC || Diamond H Ranch || Keller Broken Heart Ranch

- Simply the most exciting red Purebred to surface in the spring of 2023! Top seller recently at Keller's.
- He brings tremendous mass, thickness and depth of body along with one of the highest \$API and \$TI values among all red options.



RFS Luna K63, Maternal sister to Charger



Dam of Charger

- Wonderful feet and structure are definite pluses and his quiet nature is as good as it gets.
- The Electra donor repeatedly makes great ones! Charger is her best son to date.
- Top 1% STAY, 1% Marbling, 1% CE and 1% MCE paint a high profit genetic picture for the larger beef business.

	DIRECT					MATERNAL					CARCASS				\$ INDEX	
	CE	BW	WW	YW	ADG	MCE	MILK	MWW	STAY	DOC	CW	YG	MARB	REA	API	TI
EPD	18.5	-4.3	77.6	120.8	0.27	10.5	26.0	64.8	23.9	14.3	17.3	-0.32	0.86	0.70	206.3	104.0
ACC	0.45	0.49	0.50	0.51	0.51	0.24	0.17	0.27	0.30	0.46	0.42	0.33	0.40	0.39	-	-
RANK	1	1	55	45	35	2	35	40	1	20	95	90	1	90	1	1

IR IMPERIAL D948  
 SIRE: MR SR RED OCTOBER G1761  
 MISS SR E1761

CDI VERDICT 220Y  
 DAM: WS ELECTRA E88  
 HSF MISS SKY 87U



SEMEN \$35

Contact Allied to order semen.

ORigen **ALLIED**  
 GENETIC RESOURCES

## KBHR CHARGER K102





# RFS TOP GUN K207



Red, Homozygous Polled || PB SM

ASA# 4097193

DOB: 4/12/2022

Tattoo: K207

Owned by:

Schnabel Ranch || Rydeen Farms

- An elite curve bending mid-April purebred option who was only 87# at birth and crushed the scales at 930# at weaning.
- Multiple traits ranking in the top 1% of the breed.
- Big footed, massive son of the outcross sire WS Gadget 40G.

BANK ACC. FID.	DIRECT					MATERNAL					CARCASS				S INDEX	
	CE	BW	WW	YW	ADG	MCE	MILK	MWW	STAY	DOC	CW	YG	MARB	REA	API	TI
	15.3	1.8	111.9	169.0	0.36	9.1	27.8	83.7	10.7	18.1	67.9	-0.53	0.11	1.50	138.3	99.5
	0.45	0.43	0.46	0.46	0.46	0.23	0.17	0.27	0.32	0.38	0.40	0.31	0.35	0.37	-	-
	10	60	1	1	3	10	20	1	95	2	1	10	60	1	35	3

SEMEN \$30

Contact Allied to order semen.

KBHR SNIPER E036  
SIRE: WS GADGET 40G  
WS EMOTION E127

WS ALL ABOARD B80  
DAM: F173  
D98

**ALLIED** ORigen  
GENETIC RESOURCES



Sire of Top Gun



Red, Homozygous Polled || PB SM  
 ASA# 4070841 DOB: 2/21/2022 Tattoo: 68K

Owned by:  
 Schnabel Ranch || Wilkinson Simmentals

- New for 2023, this extra deep sided, stout made Full Figures son was impressive with his mass, volume and structure.
- Wonderful spread EPDs with top 10% values for both birth weight and growth figures.
- Super gentle and quiet natured he was the easy choice of this really good set of flush brothers.
- Use Full Pay as a cow bull to improve growth, carcass traits and profit!



Sire of Full Pay



	DIRECT					MATERNAL					CARCASS				S INDEX	
	CE	BW	WW	YW	ADG	MCE	MILK	MWW	STAY	DOC	CW	YG	MARB	REA	API	TI
EPD	13.5	-1.8	93.1	141.8	0.30	9.0	22.3	68.8	16.2	15.6	30.5	-0.44	0.45	1.26	164.1	99.7
ACC	0.43	0.46	0.48	0.49	0.49	0.26	0.20	0.28	0.34	0.42	0.44	0.36	0.44	0.42	-	-
RANK	20	10	10	10	20	10	65	25	50	10	45	40	10	3	10	3

TJ DIPLOMAT 294D  
 SIRE: HOOK'S FULL FIGURES 11F  
 HOOK'S DOCILA 23D

CDI AMBITION 255C  
 DAM: WS PAY IT FORWARD G64  
 WS MOVING FORWARD D174



**SEMEN \$30**

Contact Allied to order semen.

**ORigen** **ALLIED**  
 GENETIC RESOURCES



# WS 38 SPECIAL 20H



Red, Homozygous Polled || PB SM

ASA# 3764686

DOB: 1/27/2020

Tattoo: 20H

Owned by:

Diamond H Ranch || Wilkinson Farms

- Across the board genetic improvement and a little different pedigree sets this dark red beef bull apart.
- Get the great phenotype and structure of Hook's Full Figures without all of the Heterozygous black calves.
- 14 trait EPDs in the top 1/3 of all Purebred options is the definition of balance.
- Full Figures daughters are setting a new standard for making beautiful young females. Udders are impeccable!
- First sons were sale features at the 2023 Diamond H Red bull sale.



38 Special Son at Diamond H Ranch



38 Special Son at Diamond H Ranch

RANK	DIRECT					MATERNAL					CARCASS				S INDEX	
	CE	BW	WW	YW	ADG	MCE	MILK	MWW	STAY	DOC	CW	YG	MARB	REA	API	TI
	14.3	0.0	84.8	138.8	0.34	8.5	27.1	69.5	17.2	10.7	47.4	-0.34	0.22	1.05	149.4	87.6
	0.50	0.57	0.54	0.55	0.55	0.27	0.19	0.30	0.33	0.41	0.46	0.36	0.43	0.44	-	-
RAVE ACC	15	25	30	15	5	10	25	25	40	65	10	85	35	20	20	20

SEMEN \$30

Contact Allied to order semen.



TJ DIPLOMAT 294D  
SIRE: HOOK'S FULL FIGURES 11F  
HOOK'S DOCILA 23D

WS PRIME TIME B6  
DAM: WS KILLING TIME E38  
WS HONEY BEE C81

**ALLIED** ORigen  
GENETIC RESOURCES



Red, Homozygous Polled || PB SM  
 ASA# 3764845 DOB: 2/26/2020 Tattoo: 79H

Owned by:  
 Mushrush Red Angus || Tim Adams || Wilkinson Simmental

- Hollywood sold in the 2021 Wilkinson sale and his calves are so impressive the owners decided to promote him this year for widespread use.
- It can be difficult to find unique red genetics that also top the genetic evaluation, Hollywood does those things.
- Balanced across the board for EPDs he puts 13 traits in the top 30% of the breed while promoting growth and marbling at a very high level.
- There is not enough space to talk about his becoming famous dam Electra. If you pay attention to elite red genetics, you know exactly what she has done.



RFS Luna K63, Maternal sister to Hollywood



	DIRECT					MATERNAL					CARCASS				S INDEX	
	CE	BW	WW	YW	ADG	MCE	MILK	MWW	STAY	DOC	CW	YG	MARB	REA	API	TI
EPD	15.7	-1.3	89.7	144.0	0.34	9.8	26.1	70.9	18.1	10.8	50.4	-0.23	0.54	0.86	173.7	99.5
BANK	0.46	0.52	0.55	0.55	0.55	0.25	0.20	0.30	0.31	0.21	0.44	0.34	0.41	0.41	-	-
ACC	10	10	15	10	5	4	30	20	30	65	3	99	4	60	3	3

HOOK'S RED ZONE 79Z  
 SIRE: HOOK'S EMPIRE 61E  
 HOOKS ZAREBA 40Z

CDI VERDICT 220Y  
 DAM: WS ELECTRA E88  
 HSF MISS SKY 87U

**SEMEN \$25**

Contact Allied to order semen.

**ORigen** **ALLIED**  
 GENETIC RESOURCES



# PITTS JUSTIN TIME J15



Red, Homozygous Polled || PB SM

ASA# 3957014

DOB: 1/20/2021

Tattoo: J15

Owned by:

Schnabel Ranch || Cody Pitt

- The total outcross purebred red heifer bull everyone has been looking for.
- Out of the popular Lover Boy bull, and out of a wonderful, moderate easy fleshing cow that originated from Altenburg Super Baldy Ranch.
- J15 has one of the best EPD profiles of all the sons of Lover Boy.
- First calves avg 70# BW on virgin heifers with tons of vigor.
- Justin Time has been siring some nice baldy calves as he has a couple small white spots on his face.

EPD	DIRECT					MATERNAL					CARCASS				S INDEX	
	CE	BW	WW	YW	ADG	MCE	MILK	MWW	STAY	DOC	CW	YG	MARB	REA	API	TI
	17.4	-1.3	74.5	108.1	0.21	9.4	25.6	62.8	17.1	15.1	19.8	-0.52	0.42	0.96	159.9	87.7
ACC	0.45	0.49	0.47	0.47	0.47	0.25	0.21	0.30	0.32	0.43	0.42	0.33	0.38	0.40	-	-
RANK	2	10	70	70	75	5	35	50	40	15	85	10	10	35	10	20

**SEMEN \$30**

Contact Allied to order semen.

HTP/SVF DURACELL T52  
SIRE: THSF LOVER BOY B33  
RP/MP RIGHT TO LOVE 015U

REDHILL 823Y 14S 213B  
DAM: ASR MS JACKIE F853  
ASR MS JACKIE B496

**ALLIED**  
GENETIC RESOURCES

**ORigen**



Red, Homozygous Polled || PB SM  
 ASA# 3618723 DOB: 3/24/2019 Tattoo: G104

Owned by:  
 All Beef LLC || Bar Open A Ranch || Keller Broken Heart Ranch

- If red power is on your mind, All American should be too!
- Calves grow and get thick like few other sire groups.
- The cattle feeder that fed Jared's steers this year simply said he wished every steer in the yard grew, converted and harvested like the large group of All American sired Sim x Red Angus steers he



Son from Keller Broken Heart 2022



C078, Dam of All American

- No issues what so ever with All American daughters so far. Very fertile, maternal and have wonderful udder quality.

## KBHR ALL AMERICAN G104



	DIRECT					MATERNAL					CARCASS				S INDEX	
	CE	BW	VW	YW	ADG	MCE	MILK	MWW	STAY	DOC	CW	YG	MARB	REA	API	TI
EPD	7.2	4.4	98.9	151.8	0.33	3.8	25.3	74.7	9.2	15.6	38.1	-0.62	0.55	1.34	139.7	98.6
ACC	0.66	0.85	0.82	0.81	0.81	0.40	0.27	0.39	0.41	0.62	0.62	0.46	0.57	0.56	-	-
Rank	95	99	3	4	10	85	40	10	99	10	20	1	4	1	35	3

WS ALL-AROUND Z35  
 SIRE: WS ALL ABOARD B80  
 WS LITTLE SISTER W37

GW REDESTINED 642X  
 DAM: KBHR C078  
 KBHR U122



**SEMEN \$30**

Contact Allied to order semen.

**GENEX**

**ALLIED**  
 GENETIC RESOURCES



# RR5-MR MOAB J239

**\$API 200.0**  
**\$TI 109.2**

Red, Homozygous Polled || PB SM

ASA# 3924458

DOB: 1/21/2021

Tattoo: J239

Owned by:

JC Simmental || Klein Ranch || All Beef LLC

- No secrets here, we just have never had the opportunity to get a good picture that flatters this really good bull.
- Way bigger than most any Imperial son, he measured 7 frame at the Michigan State Test Station last spring where he dominated nearly every category of performance including gain and ultrasound scan.
- No holes type with sound structure and feet a level profile, plenty of thickness and a great attitude to work with.
- There aren't enough red options with over +200 \$API and +106 \$TI and none that I know of come in a 6.5 plus frame, power package.

	DIRECT					MATERNAL					CARCASS				S INDEX	
	CE	BW	WW	YW	ADG	MCE	MILK	MWW	STAY	DOC	CW	YG	MARB	REA	API	TI
	12.9	-0.8	83.8	128.6	0.28	8.5	24.4	66.2	19.1	14.0	42.6	-0.33	1.12	1.07	200.0	109.2
	0.43	0.44	0.43	0.44	0.44	0.27	0.22	0.29	0.33	0.44	0.41	0.34	0.40	0.40	-	-
	25	15	30	30	30	10	45	35	20	20	15	90	1	15	1	1

**SEMEN \$30**

Contact Allied to order semen.

IR IMPERIAL B772  
SIRE: IR IMPERIAL D948  
IR MS DUAL FOCUS W086

CDI ABUNDANCE 391C  
DAM: LCDR MS EMBER 724E  
KBHR CHERRY C086

**ALLIED**  
GENETIC RESOURCES

**ORigen**



Red, Homozygous Polled || 3/4 SM 3/16 AN 1/16 AR  
 ASA# 3701575 DOB: 2/29/2020 Tattoo: 454H

Owned by:

Select Sires || Klein Ranch || All Beef LLC || Gateway Simmental

- Hilger One will be one of the most used Red bulls for spring 2023 calves because he is truly different from a pedigree standpoint and he is just good!
- His young dam is gorgeous and the 75ish GW Movin On females at Gateway are among the best there.



Paternal Brother to Hilger One



GW Movin On, Sire of Hilger One

- Ranks as one of the best red bulls in the breed for STAY, he also offers wonderful spread, Docility, Marbling and Rib Eye.
- It is hard to make a bull more sound and complete physically for making commercial red bulls than Hilger One.
- Oh yeah..., He's named after a the red fire truck at GW that originated in Hilger, MT.



EPD	DIRECT					MATERNAL					CARCASS				S INDEX	
	CE	BW	WW	YW	ADG	MCE	MILK	MWW	STAY	DOC	CW	YG	MARB	REA	API	TI
	14.3	-1.3	89.9	133.8	0.27	6.5	27.4	72.4	22.9	17.5	37.7	-0.24	0.46	0.76	163.7	92.3
ACC	0.53	0.67	0.59	0.59	0.59	0.29	0.17	0.30	0.33	0.42	0.47	0.35	0.42	0.42	-	-
30	25	15	25	50	55	20	10	1	4	35	50	30	35	10	10	

GW PREMIUM BEEF 021TS  
 SIRE: GW MOVIN ON 183C  
 GW MISS PREDESTINED 117Y

GW YUKON JACK 612B  
 DAM: GW MISS YUKON JACK 913E  
 GW MISS REDESTINED 333A



SEMEN \$30

Contact Allied to order semen.





# LCRR THR HEART TO HEART 1231J



Red, Homozygous Polled || 3/4 SM 1/4 AR  
 ASA# 3893318 DOB: 3/14/2021 Tattoo: 1231J

Owned by:  
 All Beef LLC || Kellers Broken Heart Ranch

- A true outcross choice for improving Red genetics.
- Physically he is thick quartered, deep sided with extra bone and foot size.
- As a 3/4 blood, he offers supreme mating options to sire new Purebreds or improved SimAngus.
- At +26 STAY and nearly .5 MB EPD he will truly compliment today's maternal red genetics.

BRAIN (ACC. EPD)	DIRECT					MATERNAL					CARCASS				S INDEX	
	CE	BW	WW	YW	ADG	MCE	MILK	MWW	STAY	DOC	CW	YG	MARB	REA	API	TI
	13.6	0.4	76.3	119.9	0.27	7.0	27.4	65.5	25.0	13.2	46.4	-0.23	0.50	0.77	161.5	83.0
	0.43	0.49	0.45	0.46	0.46	0.21	0.15	0.25	0.29	0.18	0.39	0.30	0.33	0.36	-	-
	35	55	55	50	50	50	20	30	1	40	15	55	25	35	10	35

SEMEN \$25

Contact Allied to order semen.



HOOK'S EAGLE 6E  
 SIRE: J-J EAGLE ROCK 920G  
 GW MISS LUCKY CHARM 745U

KCC PINNACLE 949-109  
 DAM: RYMO MISS PINNACLE A52B  
 RYMO SHEZA MAKER N51Z

**ALLIED** GENETIC RESOURCES **ORigen**



Red, Homozygous Polled || 5/8 SM 9/32 AN 1/16 AR 1/32 MX  
 ASA# 3874301 DOB: 2/21/2021 Tattoo: CLRS 951J

Owned by:  
 All Beef LLC || Clear Springs || ABS || Hook Farms

- Jefferson is simply an outcross, genetic gem for making better red cattle, regardless of breed. A must use for 2023.
- Take a quick look at his EPD profile with almost every trait above breed average and +180 \$API. It is about as good as it gets!
- Physically he is a sound made, long sided and wonderfully attractive bull.
- His pedigree too makes him very easy to use as an outcross choice with great CE, Growth, STAY and Marbling.



CLRS 961J, Full Brother to Jefferson



**CLRS JEFFERSON 951J**

	DIRECT					MATERNAL					CARCASS				S INDEX	
	CE	BW	VW	YW	ADG	MCE	MILK	MWW	STAY	DOC	CW	YG	MARB	REA	API	TI
EPD	17.6	-0.3	84.8	130.2	0.28	8.9	28.6	70.9	23.2	12.5	39.3	-0.34	0.70	0.65	179.3	95.2
ACC	0.42	0.46	0.49	0.49	0.49	0.24	0.17	0.26	0.32	0.38	0.42	0.33	0.40	0.40	-	-
RANK	10	40	25	30	40	20	10	15	1	50	30	20	10	55	2	10

CDI VERDICT 220Y  
 SIRE: LEACHMAN DECREE X936D  
 REMPE BENTLEY BL010

HOOK'S DELEGATE 64D  
 DAM: M4 MS DESIRE 911G  
 M4 MS IMPULSE E6Z



**SEMEN \$30**

Contact Allied to order semen.





# GW MAJOR MOVE 590E



Red, Homozygous Polled || 5/8 SM 1/4 AN 1/8 AR  
 ASA# 3242835 DOB: 3/7/2017 Tattoo: 590E

Owned by:  
 All Beef LLC || Gateway Simmental || SRF Simmentals

- Major Move's influence will be around a long time, because his daughters will be around a long time.
- They are simply beautiful red cows with extraordinary dispositions. Udders too are improved and fleshing ability is excellent.
- On the bull calf side, expect fast growing stout boned sons that commercial customers really like.
- Major Move's pedigree also offers wonderful mating flexibility. Someone needs to make a great  $\frac{3}{4}$  blood son so that we can move forward with a few new purebreds too.



GW Major Moves Son at Eichacker Simmentals



GW Major Moves Daughter at Deckert Simmental

DIRECT					MATERNAL					CARCASS					S INDEX	
CE	BW	WW	YW	ADG	MCE	MILK	MWW	STAY	DOC	CW	YG	MARB	REA	API	TI	
7.6	0.9	89.9	138.7	0.30	3.9	31.6	76.5	20.7	18.1	40.4	-0.31	0.29	1.06	139.0	85.5	
0.66	0.87	0.84	0.84	0.84	0.59	0.60	0.67	0.45	0.60	0.60	0.44	0.59	0.53	-	-	
95	65	15	15	30	90	3	3	5	3	25	30	60	5	40	30	

SEMEN \$30

Contact Allied to order semen.



GW PREMIUM BEEF 021TS  
 SIRE: GW MOVIN ON 183C  
 GW MISS PREDESTINED 117Y

GW PREDESTINED 701T  
 DAM: GW MISS PREDESTINED 147Y  
 GW MISS RED COAT 523T

**ALLIED** ORigen  
 GENETIC RESOURCES



Red, Homozygous Polled || PB AR  
 ASA# 4130875 DOB: 2/26/2021 Tattoo: J058

Owned by:  
 All Beef LLC || Koester Red Angus || Kniebel Red Angus

- Judge is one very different and very impressive Red Angus bull! We are definitely excited to have him added to the Allied lineup.
- Tremendously unique and outcross pedigree, you have to go back several generations to find many well-known lines and on the dam side it is a storied line of long lived Kniebel raised females.
- It is truly difficult to find a sire with this much more grow and carcass combined with extra high STAY regardless of breed.
- Use him to make great new Red Angus lines or unique and valuable Red SimAngus.



**KCC JUDGE 258-J058**

	DIRECT					MATERNAL					CARCASS				S INDEX	
	CE	BW	WW	YW	ADG	MCE	MILK	MWW	STAY	DOC	CW	YG	MARB	REA	API	TI
EPD	<b>9.5</b>	<b>1.3</b>	<b>80</b>	<b>129.4</b>	<b>0.31</b>	<b>6.3</b>	<b>31</b>	<b>71</b>	<b>21.3</b>	<b>15.2</b>	<b>33.7</b>	<b>0</b>	<b>0.53</b>	<b>0.38</b>	<b>143</b>	<b>87.6</b>
ACC	0.41	0.46	0.42	0.44	0.44	0.19	0.13	0.23	0.28	0.08	0.38	0.3	0.34	0.35	-	-
Rank	85	75	40	30	25	60	4	10	3	20	45	99	20	95	30	20

BROWN CCFP REVIVAL D6685  
 SIRE: KCC REVEREND 117-932  
 117 1KCC

KCC MIKE 2105  
 DAM: 258 1KCC  
 831 1KCC



**SEMEN \$30**

Contact Allied to order semen.

**ORigen** **ALLIED**  
 GENETIC RESOURCES



# KCC EXCELLENCE 139-774

Red, Homozygous Polled || PB AR  
 ASA# 3500599 DOB: 3/7/2017 Tattoo: 774

Owned by:  
 All Beef, LLC || Kniebel Cattle Company || Select Sires



- Breed Excellence to any heifer, anywhere, anytime!
- Proven track record of light birthweight calves but plenty of power for easy to market red SimAngus bulls and females.
- Wonderful maternal calving ease, proven docility and nice feet.
- Calves have wonderful depth of body, rib shape and fleshing ability.



Son from Bulls of the Big Sky



Green Mountain Apache, High seller and Excellence son from Green Mountain Red Angus

DIRECT					MATERNAL					CARCASS					S INDEX	
CE	BW	WW	YW	ADG	MCE	MILK	MWW	STAY	DOC	CW	YG	MARB	REA	API	TI	
18.9	-6.9	49.3	85.3	0.23	10.7	23.5	48.1	15.4	21.1	13.9	-0.15	0.42	0.32	140.9	77.4	
0.73	0.87	0.84	0.84	0.84	0.46	0.44	0.54	0.38	0.47	0.6	0.45	0.58	0.56	-	-	
3	1	99	99	75	5	50	99	50	1	99	75	35	99	35	60	

## SEMEN Call for Price

Contact Allied to order semen.



LCJ MERLIN T179  
 SIRE: LJC MERLIN 937Z  
 TR CARRIE WT937

SCHULER ENVY 7342T  
 DAM: 139 1KCC  
 KCC MISS BV 2105-528



**ALLIED**  
 GENETIC RESOURCES



Homozygous Black, Homozygous Polled || 5/8 SM 3/8 AN  
 ASA# 3555669 DOB: 2/12/2019 Tattoo: JC403G

Owned by:

JC Simmental || Salinas Farms || Advanced Beef Genetics || All Beef LLC

- Talon sold as much semen as any sire we offered last year because he was appreciated by many commercial customers and breeders alike.
- It can be difficult to find a slam dunk calving ease bull like Talon whose calves grow up to be as thick, muscular easy fleshing and stout made as these.



Talon Daughter at GLBC



Talon Son at GLBC

- The maternal side too is exceptional combining Hook's Shear Force and Retail Product.
- Calves also have wonderful disposition, marbling and rib eye genetics. Talon just does a lot of things right.



	DIRECT					MATERNAL					CARCASS				S INDEX	
	CE	BW	WW	YW	ADG	MCE	MILK	MWW	STAY	DOC	CW	YG	MARB	REA	API	TI
EPD	19.8	-6.0	76.9	116.6	0.25	9.8	22.4	60.7	18.5	19.7	31.5	-0.33	0.58	1.14	172.7	93.6
ACC	0.68	0.79	0.74	0.74	0.74	0.36	0.25	0.36	0.38	0.58	0.57	0.45	0.58	0.56	-	-
Rank	2	1	50	55	65	10	60	55	20	1	55	25	15	3	4	10

HOOK'S BLACK HAWK 50B  
 SIRE: HOOK'S EAGLE 6E  
 HOOK'S CRYSTAL 1C

HOOKS SHEAR FORCE 38K  
 DAM: JC MS FORCE 403B  
 RAY BLACKCAP 5229



**SEMEN \$30**

Contact Allied to order semen.

**ORigen** **ALLIED**  
 GENETIC RESOURCES



# TJ CHIEF 460G



Homozygous Black, Homozygous Polled || 1/2 SM 1/2 AN  
ASA# 3611575 DOB: 2/1/2019 Tattoo: 460G

Owned by:  
Triangle J Ranch || Shannon Welsch || Greg Drebes

- This proven sire of beautiful phenotype and power simply sires cattle with great market value.
- Chief's first calf crop included the \$70,000 Triangle J Ranch top seller, TJ War Paint.
- Long sided, deep ribbed, stout boned progeny that have extra presence and squareness are the norm for Chief calves.
- If you want to make bald faced females that sell at a premium and then go on to make long staying, high producing daughters, Chief is one of your best options!



TJ 312J, Chief Daughter from Triangle J Ranch



TJ War Paint, 2022 Top Seller and Son of Chief

DIRECT					MATERNAL					CARCASS					S INDEX	
CE	BW	WW	YW	ADG	MCE	MILK	MWW	STAY	DOC	CW	YG	MARB	REA	API	TI	
12.9	-1.0	83.7	124.9	0.26	4.6	28.5	70.3	20.8	13.3	32.8	-0.08	0.28	0.37	143.8	82.7	
0.69	0.87	0.84	0.81	0.81	0.32	0.17	0.31	0.24	0.69	0.51	0.35	0.50	0.46	-	-	
45	30	30	40	55	85	15	15	4	40	50	90	60	95	30	40	

SEMEN \$30

Contact Allied to order semen.



ACW IRONHIDE 395Y  
SIRE: TJ FROSTY 318E  
TJ 58B

TJ NEW TIME LINE 113X  
DAM: TJ 52A  
T J MISS DAY R1

**ALLIED**  
GENETIC RESOURCES

**ORigen**



Homozygous Black, Homozygous Polled || 5/8 SM 3/8 AN  
 ASA# 3611790 DOB: 2/16/2019 Tattoo: 336G

Owned by:  
 Gibbs Farms || Baxley Family Farms || Triangle J Ranch

- Stone cold is so much more than a pretty face. He is a bull that will add depth of body, length, and will improve disposition and foot quality.
- Physically, they are level, big topped, and easy fleshing and always catch your eye with their striking balance.



Stone Cold son at Gibbs Farms



Stone Cold Daughter at Gibbs Farms

- He is a dual-purpose herd sire that will move your program in the right direction no doubt.



	DIRECT					MATERNAL					CARCASS				S INDEX	
	CE	BW	VW	YW	ADG	MCE	MILK	MWW	STAY	DOC	CW	YG	MARB	REA	API	TI
EPD	16.5	-2.6	84.9	138.4	0.33	9.3	29.6	72.0	18.4	18.7	36.9	-0.09	0.37	0.47	154.6	89.1
RANK	0.69	0.85	0.80	0.78	0.78	0.36	0.16	0.30	0.35	0.67	0.59	0.44	0.55	0.53	-	-
ACC	10	15	25	15	15	15	10	10	20	2	35	90	45	85	15	20

ACW IRONHIDE 395Y  
 SIRE: TJ FROSTY 318E  
 TJ 58B

CCR WIDE RANGE 9005A  
 DAM: TJ 11D  
 TJ 21Z



**SEMEN \$30**

Contact Allied to order semen.

**ORiGen** **ALLIED**  
 GENETIC RESOURCES



# GW TRIPLE CROWN 018C



Homozygous Black, Homozygous Polled || 5/8 SM 3/8 AN  
ASA# 2954741 DOB: 2/12/2015 Tattoo: 018C

Owned by:  
Gibbs Farms || Gateway Simmental

- The proven genomic giant of the breed. His CE to BW to YW to Carcass EPDs are simply unmatched!
- He has been a high customer satisfaction bull for many years now with no sign of slowing down. He's a heifer bull that still has plenty of growth to him.



Triple Crown son



Triple Crown son

DIRECT					MATERNAL					CARCASS					S INDEX	
CE	BW	WW	YW	ADG	MCE	MILK	MWW	STAY	DOC	CW	YG	MARB	REA	API	TI	
14.6	-1.9	90.6	151.1	0.38	10.0	19.2	64.5	18.0	21.2	57.1	-0.36	0.69	1.20	172.6	100.2	
0.80	0.91	0.89	0.89	0.89	0.64	0.68	0.74	0.54	0.79	0.75	0.56	0.75	0.69	-	-	
25	20	10	5	3	10	85	35	20	1	3	15	10	2	4	2	

SEMEN \$20

Contact Allied to order semen.



GW PREMIUM BEEF 021TS  
SIRE: J BAR J NIGHTRIDE 225Z  
J BAR J MISS ND 793X

GW PREDESTINED 701T  
DAM: GW MISS GPRD 359A  
GW MISS PREM BEEF 240Y

**ALLIED**  
GENETIC RESOURCES

**ORigen**



Homozygous Black, Homozygous Polled || 1/2 SM 1/2 AN  
 ASA# 3271380 DOB: 2/4/2017 Tattoo: E744

Owned by:  
 Bridle Bit Simmental || Hook Farms

- Progeny records have powered Eclipse to "rare air" when considering BW to YW spread, maternal traits, and \$ Index values relative to his SimGenetic peers.
- Posted impressive individual feed conversion data and is transmitting this efficiency to his offspring as verified by Eagle



Son of Eclipse at Bridle Bit Simmental



Hook's Galileo, Eclipse Son

- Pass Ranch and Bridle Bit Ranch progeny feed intake trials.
- Soft-structured and good footed, Eclipse possesses extra length and great type.
- Unique pedigree offers unlimited mating options and genetic progress for many of the high use Simmental and SimAngus bloodlines.



	DIRECT					MATERNAL					CARCASS				\$ INDEX	
	CE	BW	WW	YW	ADG	MCE	MILK	MWW	STAY	DOC	CW	YG	MARB	REA	API	TI
EPD	23.7	-6.3	79.3	129.4	0.31	14.7	31.1	70.7	18.4	18.6	27.5	0.02	0.79	0.02	190.4	100.7
ACC	0.74	0.85	0.82	0.82	0.82	0.43	0.39	0.49	0.34	0.67	0.67	0.49	0.63	0.61	-	-
1	1	1	40	30	25	1	4	15	20	2	70	99	4	99	1	2

CCR FRONTIER 0053Z  
 SIRE: BRIDLE BIT CALVARY C503  
 BRIDLE BIT MISS X058

BAR CK TEBOW 1006X  
 DAM: BRIDLE BIT MISS A327  
 BRIDLE BIT MISS Y183

## BRIDLE BIT ECLIPSE E744



**SEMEN \$25**

Contact Allied to order semen.

**ORigen** **ALLIED**  
 GENETIC RESOURCES



# SOUTHERN FORTUNE TELLER



Homozygous Black, Homozygous Polled || 1/2 SM 1/2 AN  
 ASA# 3382993 DOB: 12/20/2017 Tattoo: 1424E

Owned by:  
 Gibbs Farms || Salinas Farms || All Beef LLC

- Fortune Teller makes cattle with tremendous phenotype, structure and value.
- Thick made, correct and attractive, they are easy cattle to appreciate and the uniformity is outstanding.
- Sons have been very well accepted by commercial customers of all kinds and sons of his like GW Windfall and GW Medicine Man are proof that he will breed on.
- 2 and 3 year old daughters are really nice in production and bred back well. Expect his STAY number to improve significantly.



GW Medicine Man 200K, son from Gateway Simmentals



Son of Southern Fortune Teller

DIRECT					MATERNAL					CARCASS					S INDEX	
CE	BW	WW	YW	ADG	MCE	MILK	MWW	STAY	DOC	CW	YG	MARB	REA	API	TI	
15.9	-3.9	80.5	128.1	0.30	7.6	20.2	60.4	10.6	13.1	50.3	-0.18	0.93	0.91	169.1	101.0	
0.68	0.83	0.81	0.80	0.80	0.47	0.37	0.47	0.40	0.59	0.69	0.53	0.68	0.66	-	-	
15	4	35	30	30	35	80	55	90	40	10	70	2	15	5	2	

SEMEN \$25

Contact Allied to order semen.



HOOKS TRINITY 9T  
 SIRE: LEACHMAN PROPHET J030Z  
 LCOC ISABEL UG390

GW PREMIUM BEEF 021TS  
 DAM: GW MISS PREM BEEF 246Z  
 GW MISS GPRD 226W





Black, Homozygous Polled || 1/2 SM 1/2 AN  
 ASA# 3866492 DOB: 2/15/2021 Tattoo: 7J

Owned by:  
 J/C Simmental || Hook Farms

- First generation Homo Black and Homo Polled SimAngus calving ease prospect who projects breed-changing growth carcass merit.
- From halfblood to purebred progeny, Journey's Beacon-sired dam, Hook's Evita 18E, ranks among the best young Simmental donors for generating herdsire prospects.



Hook's Galileo, Maternal brother to Journey



Hook's Evita 18E, Donor dam of Journey

- The Stayability and Docility EPD, as well as the actual calm disposition, represented by Journey's Beacon-sired F1.
- Much more than a heifer bull, this Bragging Rights son achieved carcass and \$ Index value EPD which will enhance end product value and premiums.

	DIRECT					MATERNAL					CARCASS				S INDEX	
	CE	BW	WW	YW	ADG	MCE	MILK	MWW	STAY	DOC	CW	YG	MARB	REA	API	TI
EPD	15.6	-3.1	88.2	144.7	0.35	8.6	21.3	65.4	17.7	18.2	53.2	-0.15	0.95	0.96	186.7	105.6
ACC	0.45	0.47	0.49	0.49	0.49	0.29	0.23	0.31	0.32	0.46	0.45	0.37	0.42	0.44	-	-
Rank	20	10	15	10	10	25	70	30	25	3	5	75	2	10	1	1

V A R DISCOVERY 2240  
 SIRE: 44 BRAGGING RIGHTS 4372  
 44 RUBY 2357

HOOK'S BEACON 56B  
 DAM: HOOK'S EVITA 18E  
 HOOK'S YUMA 49Y



**SEMEN \$30**

Contact Allied to order semen.

**ORigen** **ALLIED**  
 GENETIC RESOURCES





# EGL FIREMAN 111F



DIRECT					MATERNAL					CARCASS					S INDEX	
CE	BW	WW	YW	ADG	MCE	MILK	MWW	STAY	DOC	CW	YG	MARB	REA	API	TI	
18.0	-2.3	73.3	113.8	0.25	8.4	31.3	67.8	17.9	13.2	26.2	-0.34	0.79	0.96	173.5	93.3	
0.63	0.72	0.69	0.68	0.68	0.38	0.29	0.39	0.37	0.51	0.57	0.44	0.54	0.54	-	-	
5	15	65	60	65	25	3	20	25	40	70	20	4	10	4	10	

**SEMEN \$25**

Contact Allied to order semen.



CONNEALY IN SURE 8524  
SIRE: G A R SURE FIRE  
CHAIR ROCK 5050 G A R 8086

MR NLC UPGRADE U8676  
DAM: TJ 22X  
MS MISS 306R



Homozygous Black, Homozygous Polled || 1/2 SM 1/2 AN  
ASA# 3498946 DOB: 3/15/2018 Tattoo: 111F

Owned by:

Clear Springs Cattle || ABS Global || Eagle Pass Ranch || All Beef LLC

- Fireman simply needs to see heavier use, because those who have sampled him have made great cattle and more money!
- Out of one of the best and most highly promoted set of flush brother in recent memory, he is surfacing as the brother that sires the most consistency of performance and quality.
- Physically he is a massive bull with exceptional depth and body mass. From all angles he is one thick made and imposing mature bull.
- Fireman too will improve salability with extra eye appeal and easy to appreciate structural soundness.



Son, Bulls of the Big Sky



Son from Bred for Balance



Homozygous Black, Homozygous Polled || 1/2 SM 1/2 AN  
 ASA# 3943864 DOB: 3/23/2021 Tattoo: J152

Owned by:  
 The Ranch at Rock Creek || Keller Broken Heart Ranch

- One of the elite Carcass and Calving Ease bulls to come along, Ribeye too offers grow and stout, massive phenotype.
- Out of a top end and valuable flush at the 2022 KBHR sale, Ribeye was the most structurally sound, fault free and balanced of the group.



G A R Hometown, Sire of J152



KBHR Medora G132, Dam of J152

- His dam is the great Medora donor whose progeny are already serving in herds across this nation.
- Expect fast growing, big bodied progeny that generate profit at every important point in time.

## KBHR ROCK CREEK RIBEYE J152



DIRECT					MATERNAL					CARCASS				S INDEX	
CE	BW	WW	YW	ADG	MCE	MILK	MWW	STAY	DOC	CW	YG	MARB	REA	API	TI
18.4	-2.5	78.9	131.1	0.33	11.7	23.5	62.9	15.0	13.9	45.1	-0.29	1.25	1.06	193.2	106.4
0.44	0.47	0.50	0.50	0.50	0.25	0.18	0.27	0.30	0.47	0.46	0.37	0.44	0.43	-	-
4	15	45	25	15	2	50	45	55	30	15	35	1	5	1	1

G A R ASHLAND  
 SIRE: G A R HOME TOWN  
 CHAIR ROCK SURE FIRE 6095

KBHR HIGH ROAD E283  
 DAM: KBHR MEDORA G132  
 BAR CK MS X38 106Z



**SEMEN \$30**

Contact Allied to order semen.

**ORigen** **ALLIED**  
 GENETIC RESOURCES



# TSN ARCHITECT J618



Homozygous Black, Homozygous Polled || 1/2 SM 1/2 AN  
 ASA# 3928828 DOB: 3/18/2021 Tattoo: J618

Owned by:  
 APEX Cattle

- PROVEN calving ease on hundreds of first calf heifers in 2023! They come easy, have vigor and are packed with his anticipated quality.
- Outcross genetics at its best combining an extraordinary EPD profile with his impressive individuality and gentle demeanor!
- He has an exciting future... most impressive phenotype, structure, feet, eye appeal and impacting genomic combination!
- Use him to advance calving ease, docility, and carcass traits without sacrificing performance and maternal genetics.
- Exceeding the \$29,000 \$Profit threshold, he ranks amongst the most elite of the Leachman and APEX sires.
- Breed him to heifers with complete "calving ease" confidence.
- Excellent quality semen!

DIRECT					MATERNAL					CARCASS					S INDEX	
CE	BW	WW	YW	ADG	MCE	MILK	MWW	STAY	DOC	CW	YG	MARB	REA	API	TI	
17.5	-4.1	72.8	119.7	0.29	10.7	23.9	60.2	12.2	16.8	50.0	-0.15	0.98	0.90	174.9	98.6	
0.48	0.51	0.49	0.49	0.49	0.27	0.20	0.29	0.31	0.42	0.45	0.37	0.44	0.43	-	-	
10	4	65	50	35	5	45	60	80	10	10	75	2	15	3	3	

SEMEN \$30

Contact Allied to order semen.



G A R ASHLAND  
 SIRE: G A R HOME TOWN  
 CHAIR ROCK SURE FIRE 6095

CCR COWBOY CUT 5048Z  
 DAM: TSN MISS COWBOY D350  
 TSN MISS FORCE A160

**ALLIED** ORigen  
 GENETIC RESOURCES



G A R Hometown, Sire of Architect



Homozygous Black, Homozygous Polled || 5/8 SM 3/8 AN  
 ASA# 3875162 DOB: 2/16/2021 Tattoo: 9J

Owned by:  
 Hall Stock Farm || Highland Acres

- One of the featured bulls on the Bred for Balance sale, Amplitude can change your herd in one generation with his impressive EPD profile, impeccable phenotype and diverse pedigree.
- Amplitude shows potential to add dimension of rib shape, improve structural soundness and increase the look of his



Maternal Grandam



Hook's Galileo 210G, Sire of Amplitude

- offspring.
- Out of a tremendous first calf heifer that is moderate made and excels in udder quality, structural integrity and eye appeal.
- Backed completely by Hook Farms breeding, his reputable maternal pedigree includes the 2018 % Simmental Junior and Open show National Champion.



	DIRECT					MATERNAL					CARCASS				S INDEX	
	CE	BW	VVW	YW	ADG	MCE	MILK	MWW	STAY	DOC	CW	YG	MARB	REA	API	TI
EPD	11.7	-0.6	86.2	137.9	0.32	7.5	27.4	70.5	17.0	21.0	47.6	-0.04	0.99	0.61	176.0	101.8
BANK ACC	0.45	0.48	0.47	0.47	0.47	0.23	0.12	0.23	0.30	0.42	0.41	0.33	0.38	0.39	-	-
	60	35	20	15	20	40	20	15	30	1	15	95	2	65	3	2

BRIDLE BIT ECLIPSE E744  
 SIRE: HOOK'S GALILEO 210G  
 HOOK'S EVITA 18E

HOOK'S CAPITALIST 37C  
 DAM: HA GIOVANNA 918G  
 HOOK'S/JRA DEMI 605D



**SEMEN \$30**

Contact Allied to order semen.

**ORiGen** **ALLIED**  
 GENETIC RESOURCES



# GW WINDFALL 285J



Homozygous Black, Homozygous Polled || 1/2 SM 1/2 AN  
 ASA# 3875084 DOB: 2/19/2021 Tattoo: 285J

Owned by:  
 All Beef LLC || ABS Global || Triangle J Ranch

- Windfall is a really great looking spread bull with a pedigree that is unique enough to be used on almost any SimAngus female in the land.
- Top 20% for CE EPD and Top 10% for YW EPD is the kind of spread everyone is after, then he adds top 10% Marbling and plenty of Rib Eye to the equation.
- Tex Playbook x Gold Digger x Lucky One on the dam side and Fortune Teller as the sire makes for the outcross option that is so often asked for.
- Phenotypically he is really good and has been the choice of many cattle producers and visitors to ORigen Inc. in Montana during his stay there for collection over the past 8 months.

RANK & AC EPD	DIRECT					MATERNAL					CARCASS					S INDEX	
	CE	BW	WW	YW	ADG	MCE	MILK	MWW	STAY	DOC	CW	YG	MARB	REA	API	TI	
	15.4	-1.4	86.7	143.8	0.36	8.9	21.0	64.3	14.2	15.2	58.4	-0.11	0.74	0.77	164.1	97.2	
	0.44	0.49	0.47	0.47	0.47	0.24	0.17	0.27	0.30	0.38	0.43	0.34	0.38	0.40	-	-	
	20	25	20	10	5	20	70	35	60	20	3	85	10	35	10	4	

## SEMEN Call for Price

Contact Allied to order semen.



LEACHMAN PROPHET J030Z  
 SIRE: SOUTHERN FORTUNE TELLER  
 GW MISS PREM BEEF 246Z

TEX PLAYBOOK 5437  
 DAM: GW MISS PLAYBOOK 044F  
 GW MISS GLD DIGGER 281Y



Southern Fortune Teller, Sire of Windfall





Homozygous Black, Homozygous Polled || 5/8 SM 3/8 AN  
ASA# 3703573 DOB: 9/26/2019 Tattoo: 4142G

Owned by:  
Cow Camp Ranch || Gateway Simmental || All Beef LLC

- This guy is unique both by pedigree and genetic package. He should be on everyone's short list for 2023.
- Safe for heifers, he comes from the same great producing dam as CCR Cochise and CCR THR El Dorado both featured in this directory.
- Waco has a very unique pedigree to still have a Marbling EPD



Catalyst, Maternal Grand sire of Waco



CCR Abilene, Sire of Waco

- around +1 without some of the normal genetic lines that offer that kind of genetic reach for quality grade.
- Waco too is a little more conservative for Milk EPD and mature size which suits some customers very well in terms of making lower maintenance females.



	DIRECT					MATERNAL					CARCASS				S INDEX	
	CE	BW	WW	YW	ADG	MCE	MILK	MWW	STAY	DOC	CW	YG	MARB	REA	API	TI
EPD	18.3	-3.8	69.4	108.7	0.25	11.6	19.9	54.5	14.0	13.7	36.9	-0.09	0.93	0.66	173.3	93.8
ACC	0.58	0.66	0.59	0.58	0.58	0.31	0.23	0.34	0.35	0.44	0.47	0.36	0.39	0.44	-	-
RANK	4	5	80	70	65	2	80	85	65	30	35	90	2	55	4	10

CCR PHENOM 8008A  
SIRE: CCR ABILENE 6018C  
CCR MS APPLE 9332W

CCR CATALYST 7035W  
DAM: CCR MS CATALYST 4142B  
CCR MS E-Z-3 2073Z



**SEMEN \$30**

Contact Allied to order semen.

**ORigen** **ALLIED**  
GENETIC RESOURCES



# CCR COCHISE 4142H



Homozygous Black, Homozygous Polled || 1/2 SM 1/2 AN  
ASA# 3873079 DOB: 9/23/2020 Tattoo: 4142H

Owned by:  
Cow Camp Ranch || Rydeen Farms

- Cochise was the choice of Rydeen Farms to go back on lots of powerful Impact daughters and is one of if not the best Pounder sons to surface.
- Nearly ideal for structure and length Cochise offers an EPD profile that is truly elite as well.
- His top 3%, 2%, 1% and 5% breed rankings for CE, MCE, STAY and MB EPDs respectively are a value promoting combination moving his \$API index easily into the top 1%
- He too is maternal brother to CCR Waco and CCR THR El Dorado. His dam is just consistently good.



CCR Waco 4142G, Maternal brother to Cochise



CCR El Dorado 4142J, Maternal brother to Cochise

DIRECT					MATERNAL					CARCASS					\$ INDEX	
CE	BW	WW	YW	ADG	MCE	MILK	MWW	STAY	DOC	CW	YG	MARB	REA	API	TI	
19.0	-2.4	76.7	123.9	0.30	11.7	28.8	67.1	24.2	10.9	41.1	0.01	0.77	0.55	186.8	93.5	
0.43	0.49	0.47	0.48	0.48	0.22	0.15	0.25	0.29	0.41	0.41	0.32	0.36	0.39	-	-	
3	15	50	40	30	2	10	25	1	70	25	99	5	75	1	10	

SEMEN \$30

Contact Allied to order semen.



CCR PAY DIRT 2340C  
SIRE: CCR POUNDER 2045F  
CCR MS 707 COWBOY 4123B

CCR CATALYST 7035W  
DAM: CCR MS CATALYST 4142B  
CCR MS E-Z-3 2073Z

**ALLIED** ORigen  
GENETIC RESOURCES



Homozygous Black, Homozygous Polled || 1/2 SM 1/2 AN  
 ASA# 3437294 DOB: 1/22/2018 Tattoo: 2045F

Owned by:  
 Cow Camp Ranch

- Pounder is an absolute war horse! Year in and year out, he sires one good and valuable calf after another and without enough fanfare.
- Powerful from all angles, this truck of a bull is massive for rib and thickness, wide based, super sound and really easy to be around.



CCR Nationwide 4503J, Pounder son



CCR Cochise 4142H, Pounder son

- His sons consistently are at the top of the powerful Cow Camp bull offering and are really appreciated by their many commercial bull buyers because of all the good they offer.
- Pounder's growth and maternal values continue to move up with more data, but his CE and BW remain at a very useful level for everyone.



	DIRECT					MATERNAL					CARCASS				S INDEX	
	CE	BW	WW	YW	ADG	MCE	MILK	MWW	STAY	DOC	CW	YG	MARB	REA	API	TI
EPD	15.7	0.5	102.6	165.1	0.39	11.6	29.5	80.8	19.4	18.3	60.5	0.02	0.51	0.51	163.7	98.8
ACC	0.58	0.72	0.68	0.69	0.69	0.32	0.24	0.34	0.36	0.57	0.57	0.43	0.52	0.53	-	-
	15	55	1	1	2	2	10	1	10	3	2	99	25	80	10	3

BASIN PAYWEIGHT 1682  
 SIRE: CCR PAY DIRT 2340C  
 CCR MS SINGLETARY 2340Z

CCR COWBOY CUT 5048Z  
 DAM: CCR MS 707 COWBOY 4123B  
 S D S PRINCESS 707T



**SEMEN \$35**

Contact Allied to order semen.

**ORigen** **ALLIED**  
 GENETIC RESOURCES



# CCR BONAFIDE 5116F



Homozygous Black, Homozygous Polled || 1/2 SM 1/2 AN  
 ASA# 3564556 DOB: 8/30/2018 Tattoo: 5116F

Owned by:  
 Cow Camp Ranch

- Maternal brother to the highly popular ABS sire, CCR Pay Dirt 2340C.
- Tremendous EPD profile with 12 traits ranking top 30% and above.
- Excellent disposition and foot quality combined with a striking phenotype.



Bonafide son from Cow Camp



Bonafide son from Cow Camp

RANK	DIRECT					MATERNAL					CARCASS					S INDEX	
	CE	BW	WW	YW	ADG	MCE	MILK	MWW	STAY	DOC	CW	YG	MARB	REA	API	TI	
	16.3	-1.6	84.7	135.3	0.32	12.6	25.5	67.8	14.8	19.8	41.7	-0.22	0.76	0.82	166.7	97.5	
EPD	0.56	0.65	0.63	0.64	0.64	0.33	0.24	0.35	0.33	0.50	0.50	0.39	0.44	0.46	-	-	
ACC	15	20	25	20	20	1	30	20	55	1	25	55	5	25	10	4	

SEMEN \$25

Contact Allied to order semen.



SUMMITCREST COMPLETE 1P55  
 SIRE: KM BROKEN BOW 002  
 SUMMITCREST PRINCESS 0P12

TRIPLE C SINGLETARY S3H  
 DAM: CCR MS SINGLETARY 2340Z  
 CCR MS 2027 TIME 0306X

**ALLIED** GENETIC RESOURCES **ORigen**



Homozygous Black, Homozygous Polled || 5/8 SM 3/8 AN  
 ASA# 3709222 DOB: 2/18/2020 Tattoo: CLRS 327H

Owned by:

All Beef LLC || Black Summit Cattle Co || ABS Global || Clear Springs

- Homeland has taken the SimAngus business to the next level for making great looking cattle that flat perform!
- His calves have far more growth than originally predicted and are clean made, level and very stout.
- As a mature bull it is very hard to do anything but appreciate his presence and eye appeal.
- Big time EPDs for Growth, STAY, Marbling and Rib Eye are designed to promote profit to all segments of the industry.
- First calf crop sold extremely well this spring!



Daughter from Bridle Bit Simmentals



Homeland Son at Black Summit



	DIRECT					MATERNAL					CARCASS				S INDEX	
	CE	BW	VW	YW	ADG	MCE	MILK	MWW	STAY	DOC	CW	YG	MARB	REA	API	TI
EPD	10.7	1.0	88.3	139.5	0.32	7.1	15.6	59.7	23.6	16.7	39.4	-0.52	0.78	1.34	176.8	96.8
ACC	0.64	0.83	0.77	0.76	0.76	0.33	0.20	0.33	0.34	0.51	0.54	0.41	0.53	0.48	-	-
Rank	75	70	15	15	20	45	99	60	1	10	30	1	5	1	3	4

GW STEP OUT 672X  
 SIRE: REDHILL 672X X004 231A  
 GW MISS PREM BEEF X004

MCM TOP GRADE 018X  
 DAM: CLRS ALWAYS XCELLENT  
 HOOK'S XCELLENCE 87X



**SEMEN Call for Price**

Contact Allied to order semen.





# GW JAILBREAK 555J



DIRECT					MATERNAL					CARCASS				S INDEX	
CE	BW	WW	YW	ADG	MCE	MILK	MWW	STAY	DOC	CW	YG	MARB	REA	API	TI
15.4	-2.6	83.0	127.4	0.28	8.0	31.4	72.8	19.8	14.7	41.1	-0.20	0.59	0.73	166.2	93.4
0.47	0.53	0.51	0.52	0.52	0.29	0.24	0.32	0.35	0.19	0.46	0.37	0.41	0.44	-	-
20	15	30	35	40	30	3	10	10	20	25	65	15	40	10	10

**SEMEN \$30**

Contact Allied to order semen.



GW MOVIN ON 183C  
SIRE: GW SPARKY 369E  
GW MISS CONQUEST 538C

GW PREDESTINED 701T  
DAM: GW MISS GPRD 038W  
GW MISS LUCKY ONE 736R

**ALLIED** **ORigen**  
GENETIC RESOURCES

Homozygous Black, Homozygous Polled || 5/8 SM 1/4 AN 1/8 AR  
ASA# 3877088 DOB: 3/1/2021 Tattoo: 555J

Owned by:

All Beef LLC || Fred Smith Company Ranch || Gateway Simmental

- Jailbreak was brought in to add a bit more punch to the SimAngus lineup and feature the great GW Miss GPRD 038W female who is his dam.
- His calves are not disappointing this spring either with very nice birth weight calves that are already stand-outs for thickness and bone.
- His dam is one of the very highest STAY and MB EPD SimAngus females in the world and has now been relished to a future of producing eggs. She is now 14 years of age after racking up a record of 10 calves @ 110 for Weaning Weight and producing at least 6 breeder bulls.
- Jailbreak calves will be easy to sell at a premium come next year.



GW Breakthrough, Maternal Brother to Jailbreak



GW Sparky, Senior herdsire at Gateway, and Jailbreaks Sire



Homozygous Black, Homozygous Polled || 1/2 SM 1/2 AN  
ASA# 2845421 DOB: 9/7/2013 Tattoo: 3133A

Owned by:  
Gibbs Farms || Fred Smith Company Ranch

- Recently deceased, Mountaineer has left us with a ton of beautiful daughters.
- Mountaineer was known for being one of the most productive SimAngus bulls we have ever owned and he simply was a "no-holes" bull.



Mountaineer daughter



Mountaineer Son

- At 10 years of age, he bred his last cow here naturally, but we will continue to use this dominant sire. Get your semen now before it's all gone!



	DIRECT					MATERNAL					CARCASS				S INDEX	
	CE	BW	VW	YW	ADG	MCE	MILK	MWW	STAY	DOC	CW	YG	MARB	REA	API	TI
EPD	15.1	-0.1	76.1	136.1	0.37	8.7	30.6	68.6	17.3	13.7	38.5	-0.08	0.91	0.28	174.1	94.9
ACC	0.72	0.89	0.86	0.86	0.86	0.62	0.66	0.72	0.50	0.74	0.68	0.52	0.68	0.65	-	-
Rank	20	45	55	20	4	20	5	20	30	30	30	90	2	99	3	10

HOOKS SHEAR FORCE 38K  
SIRE: S D S ALUMNI 115X  
S D S QUEEN 801U

TNT DUAL FOCUS T249  
DAM: GIBBS 9024W BLAKCAP7067T  
GIBBS 7067T BLAKCAP 877



**SEMEN \$25**

Contact Allied to order semen.

**ORigen** **ALLIED**  
GENETIC RESOURCES



# GIBBS 9121G KENWORTH



Homozygous Black, Homozygous Polled || 1/2 SM 1/2 AN  
ASA# 3717071 DOB: 9/6/2019 Tattoo: 9121G

Owned by:  
Gibbs Farms || Salinas Farms || J/C Simmentals

- Kenworth's first sons sold in our 2022 production sale and they were crowd favorites! 13 sons sold with an average of \$9,423. Kenworth adds depth of body, fleshing ability, growth, docility and foot quality.
- His calves thrive in fescue country and have excellent hair shedding ability.
- Kenworth continues being the most consistent and highest customer satisfaction bull of all the Gibbs owned bulls.



Gibbs Kingpin, Kenworth son and top seller in 2022 Gibbs Farms Sale



Dam of Kenworth

DIRECT					MATERNAL					CARCASS					S INDEX	
CE	BW	WW	YW	ADG	MCE	MILK	MWW	STAY	DOC	CW	YG	MARB	REA	API	TI	
14.2	-0.3	86.3	150.6	0.40	7.4	28.1	71.2	13.3	19.5	51.2	-0.17	0.51	0.80	147.8	91.3	
0.59	0.74	0.66	0.65	0.65	0.34	0.26	0.36	0.32	0.57	0.55	0.40	0.47	0.49	-	-	
30	40	20	5	2	40	15	10	70	2	10	70	25	30	25	15	

SEMEN \$25

Contact Allied to order semen.



YON FUTURE FORCE Z77  
SIRE: YON FULL FORCE C398  
YON SARAH A100

HOOKE'S INFINITI 10U  
DAM: GIBBS 0532X SM STAR P342  
WDG MS P342

**ALLIED**  
GENETIC RESOURCES

**ORigen**



Homozygous Black, Homozygous Polled || 1/2 SM 1/2 AN  
ASA# 3882780 DOB: 8/31/2020 Tattoo: 0062H

Owned by:  
Gibbs Farms || Salinas Farms

- Hilltop will have one of the largest sire groups in Gibbs Farms's 2023 production sale for a good reason, they GROW, GROW, GROW!
- He is the triple crown son is explosive in his growth and still loaded with marbling and carcass. If you are looking for a bull to add pounds and pay weight, here you go.
- His dam is a beautiful uddered LD CAPITALIST 316 daughter who was also #1 in her weaning contemporary. If you get paid by the pound, this is a bull that needs serious consideration.



Sire of Hilltop



	DIRECT					MATERNAL					CARCASS				S INDEX	
	CE	BW	VW	YW	ADG	MCE	MILK	MWW	STAY	DOC	CW	YG	MARB	REA	API	TI
EPD	10.9	0.9	105.3	169.1	0.40	7.1	21.3	73.9	13.4	17.8	77.8	-0.07	0.77	0.96	160.8	105.5
ACC	0.55	0.62	0.50	0.50	0.50	0.31	0.20	0.29	0.33	0.41	0.43	0.35	0.39	0.42	-	-
RANK	75	65	1	1	2	45	70	5	70	4	1	95	5	10	10	1

J BAR J NIGHTRIDE 225Z  
SIRE: GW TRIPLE CROWN 018C  
GW MISS GPRD 359A

LD CAPITALIST 316  
DAM: GIBBS 8090F EMPRISS 1085Y  
GIBBS 1085Y EMPRISS T091



**SEMEN \$30**

Contact Allied to order semen.

**ORigen** **ALLIED**  
GENETIC RESOURCES



# JC MR HURON 7262G



DIRECT					MATERNAL					CARCASS				S INDEX	
CE	BW	WW	YW	ADG	MCE	MILK	MWW	STAY	DOC	CW	YG	MARB	REA	API	TI
16.4	-1.6	102.0	168.3	0.41	7.4	21.9	72.8	18.5	16.6	57.0	-0.07	0.63	0.78	174.7	104.2
0.63	0.74	0.71	0.69	0.69	0.34	0.21	0.34	0.33	0.53	0.52	0.40	0.43	0.49	-	-
15	20	2	1	1	40	65	10	20	10	3	95	15	35	3	1

SEMEN \$25

Contact Allied to order semen.



HOOK'S BEACON 56B  
SIRE: KBHR HIGH ROAD E283  
WS MISS SUGAR C4

CONNEALY CONFIDENCE PLUS  
DAM: MILL BRAE CP QUEEN 7262  
MILL BRAE RA QUEEN 3108

**ALLIED** GENETIC RESOURCES **ORigen**

Homozygous Black, Homozygous Polled || 1/2 SM 1/2 AN  
ASA# 3555758 DOB: 3/16/2019 Tattoo: JC7262G

Owned by:  
J/C Simmental || Cow Camp Ranch

- Huron sires more performance, length and frame every time and makes some great looking females.
- One of the very best High Road sons to date out of a great Connealy Confidence Plus daughter.
- Expect attractive featured, long spined, deep sided progeny with excellent disposition.
- The set of big, broody breds that sold out of him at last year's Great Lakes Beef Connection sale were crowd favorites.



Huron son at Great Lakes Beef Connection



Huron Daughter at Great Lakes Beef Connection



Homozygous Black, Homozygous Polled || 5/8 SM 3/8 AN  
 ASA# 3874215 DOB: 2/20/2021 Tattoo: CLRS 336J

Owned by:  
 Clear Springs Cattle || Eichacker Simmentals

- Jericho does an amazing job of combining genotype and phenotype.
- Hits the ground with an impeccable foot and hoof structure and has that non measurable trait that says "look at me!"
- Dam is one of the mainstay donors at Clear Springs with an



Dam of Jericho



Full sister to Jericho

- excellent udder and the dam of Herdbook and a full sister to Homeland's mother.
- Large scrotal with a great disposition and carries the G+ logo.
- 11 traits that rank him in the top 20% of the breed.

**CLRS JERICH0 336J**



	DIRECT					MATERNAL					CARCASS				S INDEX	
	CE	BW	VW	YW	ADG	MCE	MILK	MWW	STAY	DOC	CW	YG	MARB	REA	API	TI
EPD	15.4	-2.4	69.7	107.2	0.23	6.7	26.8	61.6	23.8	16.0	21.8	-0.34	0.72	0.71	176.5	88.6
ACC	0.44	0.47	0.49	0.51	0.51	0.27	0.21	0.30	0.33	0.43	0.44	0.36	0.44	0.42	-	-
BLV	20	15	75	75	75	55	20	50	1	10	85	20	10	45	3	20

G A R SURE FIRE  
 SIRE: EGL FIRESTEEL 103F  
 TJ 22X

MCM TOP GRADE 018X  
 DAM: CLRS ALL XCELLENCE 316 A  
 HOOK'S XCELLENCE 87X



**SEMEN \$30**

Contact Allied to order semen.

**ORigen** **ALLIED**  
 GENETIC RESOURCES



# CLRS JUSTIFIED 7101J



Homozygous Black, Homozygous Polled || 1/2 SM 1/2 AN  
 ASA# 3874349 DOB: 1/31/2021 Tattoo: CLRS7101J

Owned by:  
 Clear Springs Cattle|| Trails End Cattle

- Bred to promote balance, maternal genetics and marbling improvement, this sound structured Home Town son attracted the attention of many serious breeders.
- Top 1% for Marbling genetics and top 2% for REA EPD really only comes from combining the very best of Angus and Simmental lines. Good as it gets!
- Moderate sized, deep sided, with a no-holes, balanced look from the side, if all of his calves just look like him they will be appreciated.
- His Shear Force sired dam has 4 calves weaned, ratio 108.

DIRECT					MATERNAL					CARCASS				S INDEX	
CE	BW	WW	YW	ADG	MCE	MILK	MWW	STAY	DOC	CW	YG	MARB	REA	API	TI
16.8	-1.1	80.0	121.0	0.26	9.6	24.6	64.6	14.4	17.4	48.7	-0.41	1.00	1.20	177.0	100.5
0.47	0.50	0.49	0.50	0.50	0.27	0.20	0.28	0.32	0.43	0.45	0.36	0.43	0.44	-	-
10	30	40	45	55	15	40	35	60	5	10	10	1	2	3	2

SEMEN \$30

Contact Allied to order semen.



G A R ASHLAND  
 SIRE: G A R HOME TOWN  
 CHAIR ROCK SURE FIRE 6095

HOOKS SHEAR FORCE 38K  
 DAM: K M J MS SFORCE E101  
 CCR 602M L ONE 7116T



Sire of Justified

**ALLIED** ORigen  
 GENETIC RESOURCES



Homozygous Black, Homozygous Polled || 5/8 SM 3/8 AN  
 ASA# 4033441 DOB: 1/28/2022 Tattoo: 200K

Owned by:  
 All Beef LLC || Lyman Livestock || Triangle J Ranch

- Outcross SimAngus with breed changing genetic value!
- Stick out on sale day with his massive body depth, structural soundness and great balanced look.
- Complete package with every single economically important trait above breed average.
- Two-year-old Pendleton dam started off the right way with a 106 WW Ratio and 110 for YW.



Southern Fortune Teller, sire of Medicine Man



	DIRECT					MATERNAL					CARCASS				S INDEX	
	CE	BW	WW	YW	ADG	MCE	MILK	MWW	STAY	DOC	CW	YG	MARB	REA	API	TI
EPD	18.3	-3.3	84.1	129.9	0.29	10.6	26.7	68.7	15.9	13.5	38.1	-0.24	0.88	0.72	180.2	102.4
ACC	0.41	0.45	0.46	0.47	0.47	0.22	0.14	0.25	0.30	0.36	0.40	0.33	0.37	0.39	-	-
Rank	4	10	25	30	35	5	20	20	45	35	35	50	3	45	2	1

LEACHMAN PROPHET J030Z  
 SIRE: SOUTHERN FORTUNE TELLER  
 GW MISS PREM BEEF 246Z

BAR CK PENDLETON 7028  
 DAM: GW MISS PENDLETON 013H  
 GW MISS JACKPOT 800F



**SEMEN \$30**

Contact Allied to order semen.

**ORigen** **ALLIED**  
 GENETIC RESOURCES



## C-3 NEXT UP NS B220 J939



Homozygous Black, Homozygous Polled || 1/2 SM 1/2 AN  
ASA# 4038066 DOB: 8/27/2021 Tattoo: J939

Owned by:

All Beef LLC || Gerloff Farms || Cole Cattle Company

- Unlimited SimAngus potential with a unique pedigree proposition.
- ACE certified with top 5% CE, 2% STAY, 10% Doc., 1% Marbling and +201 \$API at publishing.
- Slick haired with great individual performance, he was born and developed to thrive in southern climates.
- His complete outcross dam has 6 Weaned @105 with 4 ultra-sounded progeny @129 IMF.

DIRECT					MATERNAL					CARCASS					S INDEX	
CE	BW	WW	YW	ADG	MCE	MILK	MWW	STAY	DOC	CW	YG	MARB	REA	API	TI	
18.3	-3.3	79.3	122.8	0.27	12.0	33.3	72.9	22.3	16.5	43.1	-0.08	1.10	0.62	202.3	104.8	
0.45	0.50	0.47	0.48	0.48	0.21	0.14	0.24	0.29	0.40	0.40	0.32	0.40	0.39	-	-	
4	10	40	40	50	2	2	10	2	10	20	90	1	65	1	1	

SEMEN \$30

Contact Allied to order semen.



BRIDLE BIT ECLIPSE E744  
SIRE: HOOK'S GALILEO 210G  
HOOK'S EVITA 18E

DIXON PRIME CUT NS Z209  
DAM: PDF BLK MALLORY B220  
PDF BLK MALLORY U532

**ALLIED**  
GENETIC RESOURCES

**ORigen**



Homozygous Black, Homozygous Polled || 1/2 SM 1/2 AN  
 ASA# 4028738 DOB: 9/9/2021 Tattoo: 5171J

Owned by:  
 All Beef LLC || ABS Global || Cow Camp Ranch || Gibbs Farms

- A genetic outlier who will supply a magnitude of value across the board all while receiving the ACE logo on the Rightchoice Genomic screening.
- Bedrock pedigree features some of the most proven genetics in the sired by the lead off bull for ABS Tehama Patriarch and is



Dam of Bedrock



CCR Kiowa 5065H, Maternal brother to Bedrock

- backed by CCR Cowboy Cut on the bottom side.
- Along with supplying a foundation of genetic advancement Bedrock will improve fleshing ability, hoof quality and scrotal size.



	DIRECT					MATERNAL					CARCASS				S INDEX	
	CE	BW	WW	YW	ADG	MCE	MILK	MWW	STAY	DOC	CW	YG	MARB	REA	API	TI
EPD	15.0	-1.3	88.6	143.5	0.34	9.2	23.3	67.5	16.3	13.4	60.8	-0.05	0.84	0.80	173.3	100.6
ACC	0.46	0.49	0.49	0.50	0.50	0.28	0.21	0.30	0.30	0.46	0.45	0.36	0.41	0.43	-	-
BLK	20	25	15	10	10	15	50	25	40	35	2	95	3	30	4	2

S S NIAGARA Z29  
 SIRE: TEHAMA PATRIARCH F028  
 TEHAMA ELITE BLACKBIRD D826

CCR COWBOY CUT 5048Z  
 DAM: CCR MS 2073 COWBOY 5171C  
 CCR MS E-Z-3 2073Z



**SEMEN Call for Price**

Contact Allied to order semen.





# LRS RARITY 983J



Homozygous Black, Homozygous Polled || 1/2 SM 1/2 AN  
ASA# 3887226 DOB: 1/18/2021 Tattoo: 983J

Owned by:  
Gibbs Farms, Baxley Family Farms

- The \$20,000 high selling bull from 2022 Lassle Ranch Simmentals.
- Picked for his impressive CE to YW spread. A heifer bull that is loaded with potential by adding growth and frame.
- Possibly the best TAHOE son of any breed and backed by Lassle's best cow (full sib to LRS FALCON). A royal lineage and superb physical attributes leave you excited about this bulls potential.



LRS Ms Eagle 983G, Dam of Rarity

DIRECT					MATERNAL					CARCASS					S INDEX	
CE	BW	WW	YW	ADG	MCE	MILK	MWW	STAY	DOC	CW	YG	MARB	REA	API	TI	
14.6	-0.4	101.3	167.4	0.41	5.8	22.9	73.5	17.1	14.8	66.7	-0.15	0.70	0.99	171.3	104.3	
0.46	0.48	0.47	0.48	0.48	0.29	0.22	0.30	0.30	0.45	0.43	0.34	0.40	0.41	-	-	
25	40	2	1	1	70	55	10	30	20	1	75	10	10	4	1	

SEMEN \$30

Contact Allied to order semen.



TEHAMA UPWARD Y238  
SIRE: TEHAMA TAHOE B767  
TEHAMA MARY BLACKBIRD Y684

HOOK'S EAGLE 6E  
DAM: LRS MS EAGLE 983G  
LRS MS CLASS ACT 437B



Sire of Rarity

**ALLIED** GENETIC RESOURCES **ORigen**



Homozygous Black, Homozygous Polled || 1/2 SM 1/2 AN  
 ASA# 4111779 DOB: 2/18/2022 Tattoo: K023

Owned by:  
 APEX Cattle || TSN Simmentals

- An extraordinary individual packaged with superb phenotype and top percentile genomic enhanced EPDS in 11 traits/indexes!
- Highly recommended for dependable use on first calf heifers with a top 4% CE EPD, and yet attain excellent performance as noted by his astonishing performance numbers and \$APT and \$TI!
- He is the #2 WW, #4 YW and #4 MWW plus #6 REA EPD ranked son of all GAR HOME TOWN SimAngus 50% bulls in the breed!
- Beyond his data, he excels with his extra body mass, natural thickness, great attitude and flawless feet and legs.
- Use him with confidence on your yearling heifers, top donors or cowherd with confidence!
- Excellent quality semen ready to ship!



	DIRECT					MATERNAL					CARCASS				S INDEX	
	CE	BW	WW	YW	ADG	MCE	MILK	MWW	STAY	DOC	CW	YG	MARB	REA	API	TI
EPD	18.4	-0.8	96.9	151.5	0.34	10.5	21.5	69.9	13.8	12.2	50.2	-0.34	0.76	1.12	171.2	104.2
ACC	0.47	0.49	0.48	0.49	0.49	0.26	0.17	0.27	0.28	0.42	0.43	0.35	0.40	0.41	-	-
BLV	4	35	4	5	10	10	70	15	65	55	10	20	5	3	4	1

G A R ASHLAND  
 SIRE: G A R HOME TOWN  
 CHAIR ROCK SURE FIRE 6095

HOOK'S EAGLE 6E  
 DAM: TSN MISS EAGLE H561  
 TSN MISS AUGUSTUS C232

TSN HOMESTEADER K023



SEMEN \$30

Contact Allied to order semen.

ORiGen **ALLIED**  
 GENETIC RESOURCES



# GIBBS KINGPIN 1140J



Homozygous Black, Homozygous Polled || 1/2 SM 1/2 AN  
ASA# 3997162 DOB: 9/4/2021 Tattoo: 1140J

Owned by:  
Gibbs Farms || Powerline Genetics

- The \$28,000 high selling bull in the 2022 Gibbs Farms production sale. Much like his sire, admired for his striking eye appeal and foot quality.
- Kingpin exhibits a tick more growth and marbling than his sire while still keeping his CE and BW EPD in check.
- We are really excited about this young sire's potential and have several matings on the way!



Gibbs 9121G Kenworth, Sire of Kingpin



Dam of Kingpin

DIRECT					MATERNAL					CARCASS					S INDEX		
CE	BW	WW	YW	ADG	MCE	MILK	MWW	STAY	DOC	CW	YG	MARB	REA	API	TI		
13.6	-0.3	92.8	162.1	0.43	7.8	30.7	77.0	16.5	20.5	53.3	-0.04	0.69	0.64	165.7	99.4		
0.40	0.44	0.46	0.46	0.46	0.20	0.13	0.23	0.29	0.41	0.39	0.31	0.34	0.37	-	-		
35	40	10	2	1	35	4	2	35	1	5	95	10	60	10	2		

SEMEN \$40

Contact Allied to order semen.



YON FULL FORCE C398  
SIRE: GIBBS 9121G KENWORTH  
GIBBS 0532X SM STAR P342

TJ DIPLOMAT 294D  
DAM: GIBBS 8028F FANCY 6138D  
GIBBS 6138D FANCY 4422B

**ALLIED** ORigen  
GENETIC RESOURCES



Homozygous Black, Homozygous Polled || 1/2 SM 1/2 AN  
 ASA# 4028639 DOB: 9/1/2021 Tattoo: 3355J

Owned by:  
 Cow Camp Ranch || Lassle Ranch Simmental

- A first generation SimAngus bull in which every cattleman could appreciate at the 2023 Cow Camp Bull Sale.
- Anthem was admired for his immense amount of ribshape, fleshing ability, and overall mass.
- Physically Anthem is a bull who checks all the boxes from a phenotype standpoint and genetically supplies ample growth, calving ease, and balanced terminal traits.
- Anthem's pedigree features some on the industry's greats in Tehama Patriarch and CCR Cowboy Cut.



Sire of Anthem



	DIRECT					MATERNAL					CARCASS				S INDEX	
	CE	BW	WW	YW	ADG	MCE	MILK	MWW	STAY	DOC	CW	YG	MARB	REA	API	TI
EPD	15.2	-1.6	79.5	124.8	0.28	11.2	26.0	65.7	18.2	14.1	38.8	-0.10	0.51	0.74	154.8	87.2
ACC	0.44	0.46	0.50	0.50	0.50	0.28	0.20	0.29	0.30	0.43	0.44	0.35	0.40	0.42	-	-
Rank	20	20	40	40	40	3	25	30	20	30	30	90	25	40	15	25

S S NIAGARA Z29  
 SIRE: TEHAMA PATRIARCH F028  
 TEHAMA ELITE BLACKBIRD D826



CCR COWBOY CUT 5048Z  
 DAM: CCR MS 5161 COWBOY 8636F  
 CCR MS 9332 PHENOM 5161C

**CCR ANTHEM 3355J**

**SEMEN \$30**

Contact Allied to order semen.

**ORigen** **ALLIED**  
 GENETIC RESOURCES



# CCR FIRE POWER 8081J



Homozygous Black, Homozygous Polled || 1/2 SM 1/2 AN  
 ASA# 4029010 DOB: 9/7/2021 Tattoo: 8081J

Owned by:  
 Cow Camp Ranch || Gibbs Farms || Trauernicht Simmentals

- One of the most physically impressive SimAngus bulls to surface in the 2023.
- Firepower combines the striking phenotype of his sire EGL Firesteel while being one of the highest growth heaviest muscled sons of Firesteel to date.
- If you are looking to inject growth and terminal traits Fire Power will be a must use bull this upcoming breeding season.

BRAIN ACC EPD	DIRECT					MATERNAL					CARCASS				S INDEX	
	CE	BW	WW	YW	ADG	MCE	MILK	MWW	STAY	DOC	CW	YG	MARB	REA	API	TI
	12.3	1.1	94.5	152.3	0.36	3.4	25.7	72.9	17.6	7.5	49.7	-0.16	0.95	0.85	176.7	104.3
	0.45	0.49	0.47	0.48	0.48	0.24	0.17	0.27	0.30	0.40	0.41	0.32	0.38	0.38	-	-
	55	70	10	4	5	95	30	10	25	95	10	75	2	25	3	1

SEMEN \$30

Contact Allied to order semen.



G A R SURE FIRE  
 SIRE: EGL FIRESTEEL 103F  
 TJ 22X

BALDRIDGE COMMAND C036  
 DAM: CCR MS COMMAND 8081F  
 CCR MS 2073 COWBOY 5171C

**ALLIED** ORigen  
 GENETIC RESOURCES



Grandam of Fire Power



Homozygous Black, Homozygous Polled || 1/2 SM 1/2 AN  
 ASA# 4028702 DOB: 9/15/2021 Tattoo: 4503J

Owned by:  
 Cow Camp Ranch || Wildberry Farms

- Nationwide was the lead off bull of the highly popular CCR Pounder sons in the 2023 Cow Camp sale.
- He has a quiet demeanor with impeccable foot and leg structure. Extremely sound and athletic on the move with a big footed base.
- Nationwide's dam is an easy fleshing cow with exceptional udder quality that is backed by generations of strong uddered cows. She traces back to one of Cow Camp's top cow families that is loaded with maternal and carcass quality.



Grandam of Nationwide



CCR Pounder 2045F, Sire of Nationwide

- He is well balanced throughout his EPDs with 12 different traits ranking in the top 20% of the breed.

	DIRECT					MATERNAL					CARCASS				S INDEX	
	CE	BW	WW	YW	ADG	MCE	MILK	MWW	STAY	DOC	CW	YG	MARB	REA	API	TI
EPD	13.3	0.5	87.2	141.7	0.34	10.6	27.1	70.7	21.7	18.9	47.9	-0.03	0.72	0.50	171.2	94.6
ACC	0.43	0.49	0.47	0.48	0.48	0.23	0.17	0.27	0.32	0.43	0.42	0.33	0.37	0.39	-	-
RANK	40	55	20	15	10	5	20	15	3	2	10	95	10	85	4	10

CCR PAY DIRT 2340C  
 SIRE: CCR POUNDER 2045F  
 CCR MS 707 COWBOY 4123B

JC MR NATIONAL 610Y  
 DAM: CCR MS NATIONAL 4503B  
 CCR MS LUCY 2405Z



**SEMEN \$30**

Contact Allied to order semen.

**ORigen** **ALLIED**  
 GENETIC RESOURCES

**CCR NATIONWIDE 4503J**



SIMANGUS™



# GW KNOCKOUT 411K



Homozygous Black, Homozygous Polled || 5/8 SM 11/32 AN 1/32 AR  
 ASA# 4033516 DOB: 2/21/2022 Tattoo: 411K

Owned by:  
 McCafferty Ranch Company

- Knockout was the really popular lot #9 at the 2023 Gateway sale because he brought a little more grow and extension to a fabulous outcross pedigree.
- He can be used on about any pedigree you have and will absolutely improve maternal, growth and carcass traits.
- The GW High Ball sons were one of the breakout sire groups among SimAngus this spring and Knockout was simply the best one to sell.
- Long sided, sound footed and very balanced on the profile, expect his calves to be eye catchers too!



Maternal grandsire of Knockout



Knockout's Sire

DIRECT					MATERNAL					CARCASS				S INDEX	
CE	BW	WW	YW	ADG	MCE	MILK	MWW	STAY	DOC	CW	YG	MARB	REA	API	TI
15.0	-1.1	80.4	125.5	0.28	9.0	27.7	67.9	20.9	15.9	36.9	-0.32	0.86	1.02	180.0	97.1
0.45	0.49	0.47	0.47	0.47	0.21	0.12	0.23	0.27	0.12	0.40	0.31	0.35	0.36	-	-
20	30	40	35	40	20	15	20	4	15	35	25	3	10	2	4

SEMEN \$30

Contact Allied to order semen.



BAR CK PENDLETON 7028  
 SIRE: GW HIGH BALL 102H  
 GW MISS GPRD 341Z

GW SPARKY 369E  
 DAM: GW MISS SPARKY 209H  
 GW MISS BREAKOUT 727C

**ALLIED** ORigen  
 GENETIC RESOURCES



Homozygous Black, Homozygous Polled || 1/2 SM 1/2 AN  
ASA# 3752744 DOB: 2/26/2020 Tattoo: A411H

Owned by:  
River Creek Farms || Schooley Cattle

- Schooley Haggard has proved his ability to transmit elite marbling, CE and phenotype along to his progeny. While adding more Growth than his sire
- Haggards dam continues to impress with her ability to work on any sire to make growthy herd sires, as well as passing on her



Dam of Haggard



Sire of Haggard

- maternal feet, legs, and udder improvement to her daughters.
- Use Haggard on those females that are big stout, high growth, needing calving ease, and IMF and you will love em!

## SCHOOLEY HAGGARD A411H



	DIRECT					MATERNAL					CARCASS				S INDEX	
	CE	BW	WW	YW	ADG	MCE	MILK	MWW	STAY	DOC	CW	YG	MARB	REA	API	TI
EPD	16.4	-1.5	90.0	140.6	0.32	8.3	27.9	72.8	16.1	16.4	49.7	-0.07	1.22	0.77	195.1	111.3
ACC	0.51	0.58	0.57	0.57	0.57	0.27	0.20	0.30	0.33	0.46	0.45	0.35	0.43	0.43	-	-
RANK	15	25	15	15	20	25	15	10	40	10	10	95	1	35	1	1

G A R SURE FIRE  
SIRE: EGL FIRESTEEL 103F  
TJ 22X

G A R PROPHET  
DAM: SCHOOLEY MISS 3000A 823F  
CCR MS SINGLETARY 3000A

**SEMEN \$40**

Contact Allied to order semen.

**ORigen** **ALLIED**  
GENETIC RESOURCES



# BRIDLE BIT BLACKOUT K249



Homozygous Black, Homozygous Polled || 5/8 SM 3/8 AN  
 ASA# 4058265 DOB: 2/5/2022 Tattoo: K249

Owned by:  
 Black Summit || Cow Camp Ranch

- A heifer safe, maternally focused son of Bridle Bit Eclipse who was on outlier for feed intake data in the 2023 Bridle Bit Bull Sale.
- The bottom side of his pedigree features one of the rising stars in the Bridle Bit program a Black Hawk daughter out of the famous B452 donor.
- K249's flawless structure, ACE logo, and exceptional feed intake data makes him a rare find for a SimAngus bull.
- No matter your breeding objectives K249's genetic value and exceptional phenotype will move any program in a positive direction.

DIRECT					MATERNAL					CARCASS					S INDEX	
CE	BW	WW	YW	ADG	MCE	MILK	MWW	STAY	DOC	CW	YG	MARB	REA	API	TI	
20.1	-3.9	78.8	119.9	0.26	11.7	30.1	69.4	20.3	17.0	24.8	-0.29	0.44	0.69	166.1	89.5	
0.46	0.50	0.48	0.49	0.49	0.26	0.19	0.29	0.32	0.41	0.43	0.34	0.41	0.41	-	-	
2	4	45	50	55	2	5	15	10	10	75	35	35	50	10	15	

SEMEN \$30

Contact Allied to order semen.



BRIDLE BIT CALVARY C503  
 SIRE: BRIDLE BIT ECLIPSE E744  
 BRIDLE BIT MISS A327

HOOK'S BLACK HAWK 50B  
 DAM: BRIDLE BIT MISS F8111  
 BRIDLE BIT MISS B452



Sire of Blackout

**ALLIED** ORigen  
 GENETIC RESOURCES



Homozygous Black, Homozygous Polled || 5/8 SM 3/8 AN  
 ASA# 3762668 DOB: 1/23/2020 Tattoo: 647H

Owned by:  
 Larry and Carol Drake || Triangle J Ranch

- Bonafide combines an outstanding power phenotype with an elite set of genomically enhanced EPDs.
- Top 10% Calving Ease.
- Top 1% Weaning Weight (107.5), Yearling Weight (171.1).
- Top 2% Average Daily Gain (.40).
- Top 1% Maternal Weaning Weight.
- Top 2% Terminal Index.
- Top 10% Milk, Carcass weight, Ribeye Area and All Purpose Index.
- Top 25% Maternal Calving Ease, Stay, Yield Grade and Back Fat.
- Bonafide's first bulls were sale favorites at our January bull sale with excellent look, gain and meat. Bonafide delivers these payweight traits in a package that includes strong calving ease, maternal and carcass performance. A bull that excels in every trait important to the profitability of cattlemen and women.



TJ 8T, Maternal grandam of Bonafide



BRAIN ACC	DIRECT					MATERNAL					CARCASS				S INDEX	
	CE	BW	WW	YW	ADG	MCE	MILK	MWW	STAY	DOC	CW	YG	MARB	REA	API	TI
	16.9	-0.8	107.5	170.8	0.40	8.2	29.8	83.4	16.7	17.6	51.0	-0.32	0.38	1.02	159.0	101.9
	0.48	0.52	0.50	0.51	0.51	0.29	0.24	0.33	0.36	0.42	0.42	0.35	0.39	0.42	-	-
	10	35	1	1	2	30	10	1	35	4	10	25	45	10	15	1

HOOK'S BLACK HAWK 50B  
 SIRE: HOOK'S EAGLE 6E  
 HOOK'S CRYSTAL 1C

TJ MAKERS MARK 215Y  
 DAM: TJ 23D  
 TJ 8T



**SEMEN \$30**

Contact Allied to order semen.

**ORigen** **ALLIED**  
 GENETIC RESOURCES



# TJ BLACK ICE 451H

Homozygous Black, Homozygous Polled || 1/2 SM 1/2 AN  
ASA# 3762967 DOB: 2/18/2020 Tattoo: 451H

Owned by:  
Triangle J Ranch || Steve Harris



- Black Ice is simply a physical stud with more look and thickness than about any Sim sire you can use.
- Explosive growth with huge rib and body mass, his daughters lit up the 2022 Triangle J female sale.
- Calves are beautiful fronted, stout boned and tremendously and will be famous from day 1 on!
- Unfortunately, Black Ice is now deceased and semen is limited, so order early.



Dam of Black Ice



Son of Black Ice

BRAIN ACT. (PP)	DIRECT					MATERNAL				CARCASS				S INDEX		
	CE	BW	WW	YW	ADG	MCE	MILK	MWW	STAY	DOC	CW	YG	MARB	REA	API	TI
	5.2	2.1	103.9	157.4	0.33	0.6	35.6	87.5	15.8	17.8	60.2	0.00	0.22	0.52	123.2	88.9
	0.62	0.77	0.73	0.71	0.71	0.34	0.25	0.36	0.33	0.55	0.52	0.38	0.41	0.47	-	-
	99	85	1	3	15	99	1	1	45	4	2	99	75	80	65	20

SEMEN \$30

Contact Allied to order semen.



ACW IRONHIDE 395Y  
SIRE: TJ FROSTY 318E  
TJ 58B

TJ SHARPER IMAGE 809U  
DAM: TJ 95A  
TJ 36X

**ALLIED**  
GENETIC RESOURCES

**ORigen**



Homozygous Black, Homozygous Polled || 1/2 SM 1/2 AN  
 ASA# 3887973 DOB: 1/7/2021 Tattoo: 137J

Owned by:  
 Cow Camp Ranch

- Unique pedigree and phenomenal numbers make Rawhide worth a try!
- Designed to promote growth and payweight, his evaluation for Yearling weight and ADG and Carcass Weight are among the highest in the IGS database.
- His Marbling EPD is truly exceptional as well making one of the best terminal options available for creating high quality, heavy weight, valuable fed cattle.
- Take advantage of the years of selection for feed efficiency in the Eagle Pass genetic improvement program.



Sire of Rawhide



	DIRECT					MATERNAL					CARCASS				S INDEX	
	CE	BW	WW	YW	ADG	MCE	MILK	MWW	STAY	DOC	CW	YG	MARB	REA	API	TI
EPD	12.8	-0.1	98.8	163.5	0.40	7.2	22.4	71.8	16.2	14.6	56.3	-0.04	1.02	0.69	182.3	109.5
ACC	0.40	0.44	0.47	0.48	0.48	0.22	0.16	0.25	0.28	0.40	0.40	0.33	0.39	0.40	-	-
Rank	45	45	3	2	2	45	60	10	40	25	3	95	1	50	2	1

LCDR WITNESS 541C  
 SIRE: LCDR FAVOR 149F  
 WS MISS SUGAR C4

G A R SURE FIRE  
 DAM: G A R SURE FIRE 307  
 CHAIR ROCK 9Q13 RITA 5048



**SEMEN \$30**

Contact Allied to order semen.

**ORiGen** **ALLIED**  
 GENETIC RESOURCES



# TJ NEBRASKA 258G



Homozygous Black, Homozygous Polled || 1/2 SM 1/2 AN  
 ASA# 3582542 DOB: 2/25/2019 Tattoo: 258G

Owned by:

Genex || Fred Smith Company Ranch || All Beef LLC || Triangle J Ranch || J/C Simmentals

- His calves come easy, grow like crazy and offer tremendous terminal value to you customers and the larger beef industry.
- Nebraska adds frame along with the weight and because of that his sons sell well almost everywhere.
- Big, long, smooth made level calves with good structure are what you can expect every time.
- Big carcass values and growth push his \$TI to well over +100. Great terminal sire!



Son from Bulls of the Big Sky



Son from Eichacker Simmental

DIRECT					MATERNAL					CARCASS					S INDEX	
CE	BW	WW	YW	ADG	MCE	MILK	MWW	STAY	DOC	CW	YG	MARB	REA	API	TI	
13.7	-0.3	94.3	148.2	0.34	5.8	35.5	82.6	12.8	6.4	48.5	-0.24	0.73	1.04	159.3	101.8	
0.68	0.82	0.78	0.77	0.77	0.40	0.33	0.44	0.34	0.57	0.58	0.44	0.52	0.55	-	-	
35	40	10	10	10	70	1	1	75	99	10	50	10	10	15	2	

SEMEN \$20

Contact Allied to order semen.



G A R EARLY BIRD  
 SIRE: G A R ASHLAND  
 CHAIR ROCK AMBUSH 1018

RCR STETSON T17  
 DAM: TJ 33Y  
 MS MISS 306R

**ALLIED**  
 GENETIC RESOURCES

**GENEX**



Homozygous Black, Homozygous Polled || 1/2 SM 1/2 AN  
 ASA# 4124922 DOB: 10/16/2022 Tattoo: 9K

Owned by:  
 All Beef LLC || Beach Cattle Co || Iron Creek Cattle

- 9 is last of the SimAngus because we will have to wait in semen until this fall. That's because he was just purchased as a future plan candidate SimAngus with all the potential in the world.
- A direct son of Poss Deadwood and out of the KBHR Matron of Honor donor, his genomic potential is definitely exciting.
- Huge spread from BW to YW EPDs along with solid maternal numbers and elite carcass EPDS make him one that was worth waiting on.
- Look for updates on the availability of this next generation SimAngus sire coming this fall!



Mother of Never Say Never



POSS DEADWOOD - Sire of Never Say Never

	DIRECT					MATERNAL					CARCASS				S INDEX	
	CE	BW	WW	YW	ADG	MCE	MILK	MWW	STAY	DOC	CW	YG	MARB	REA	API	TI
EPD	15.2	-2.6	90.8	151.2	0.38	9.3	25.9	71.2	16.9	14.0	59.8	-0.05	1.14	0.85	191.0	109.9
ACC	0.42	0.44	0.44	0.44	0.44	0.24	0.17	0.24	0.27	0.23	0.42	0.34	0.40	0.41	-	-
RANK	20	15	10	5	3	15	30	10	35	30	2	95	1	25	1	1

POSS MAVERICK  
 SIRE: POSS DEADWOOD  
 POSS ELLUNAMERE 399

HOOK'S BEACON 56B  
 DAM: KBHR MATRON OF HONOR F202  
 BAR CK MS X38 106Z



**SEMEN \$30**

Contact Allied to order semen.

**ORigen** **ALLIED**  
 GENETIC RESOURCES



# MILL BRAE COMRADE (18586448)



Homozygous Black, Homozygous Polled || PB AN  
 ASA# 3502250 DOB: 2/6/2016 Tattoo: 6184

Owned by:  
 All Beef, LLC || J/C Simmentals || Fauth Ranch

- The more proof that comes in on Comrade progeny the better he looks and the more he lives up to his Angus EPD projected value.
- Proven calving ease sire with wonderful growth and carcass value, he comes from one of the great maternal donors from the Mill Brae herd in KS.
- Physically Comrade still looks incredible and is one of the most gentle mature bulls you will find. His feet are absolutely perfect as well, making him more unique than we wish sometimes.
- Thank you KJ Fauth at Shepherd, MT for the purchase of the walking rights on Comrade this past year. At 7 years old, he still looks like he could go another 3 or 4 years at least.



Dam of Mill Brae Comrade



Comrade son

EPD	DIRECT					MATERNAL					CARCASS				S INDEX	
	CE	BW	WW	YW	ADG	MCE	MILK	MWW	STAY	DOC	CW	YG	MARB	REA	API	TI
	16.9	-0.9	83.2	152.9	0.44	8.3	24.8	66.4	11.4	15.0	66.9	0.06	0.65	0.72	139.6	84.1
ADG	0.73	0.76	0.74	0.74	0.74	0.53	0.46	0.53	0.18	0.59	0.73	0.53	0.66	0.69	-	-
ADG	10	30	30	4	1	25	35	25	85	20	1	99	10	45	40	35

SEMEN \$25

Contact Allied to order semen.



CONNEALY CONSENSUS 7229  
 SIRE: CONNEALY COMRADE 1385  
 HAPPY GEE OF CONANGA 919

S S OBJECTIVE T510 OT26  
 DAM: MILL BRAE OBJ BLACKCAP 9244  
 MILL BRAE RT BACKCAP 8022

**ALLIED**  
 GENETIC RESOURCES

**ORigen**



BULL NAME	Page	BULL NAME	Page	BULL NAME	Page	BULL NAME	Page
ASR AMERICAN PROUD H0301	19	FIVE STAR JACKSON J10	52	JC KING OF THE ROAD 468H	42	MR ISHEE TRIPLE TRAIL BLAZER	51
BAS MONEY MAKER J801	16	GIBBS 3133A MOUNTAINEER	105	JC MR HURON 7262G	108	MR SR JACKED UP J866	67
BRIDLE BIT BLACKOUT K249	122	GIBBS 9114G ESSENTIAL	5	JC MR PONTIAC D114K	27	PITTS JUSTIN TIME J15	78
BRIDLE BIT ECLIPSE E744	91	GIBBS 9121G KENWORTH	106	JC MR TALON 403G	87	REDHILL BURLEY 99J	70
BRIDLE BIT GPS H078	22	GIBBS HILLTOP 0062H	107	JC MR TOTAL POWER F113K	36	RFS TOP GUN K207	74
BRIDLE BIT RESOURCE G9117	11	GIBBS KINGPIN 1140J	116	JC QUIET MAN 758K	31	RR5-MR MOAB J239	80
BROWN RRR EMBLEM J3541	13	GW KNOCKOUT 411K	120	KBHR ALL AMERICAN G104	79	RUBYS HITMAN 0107H	53
C-3 NEXT UP NS B220 J939	112	GW HILGER ONE 454H	81	KBHR CHARGER K102	73	SCHOOLEY HAGGARD A411H	121
CAMP CROCKETT J1098	34	GW JAILBREAK 555J	104	KBHR CHISUM H160	46	SCHOOLEY KROWN 28K	62
CCR ANTHEM 3355J	117	GW MAJOR MOVE 590E	84	KBHR CIMARRON F151	38	SOUTHERN FORTUNE TELLER	92
CCR BEDROCK 5171J	113	GW MEDICINE MAN 200K	111	KBHR GLOBAL J138	4	TJ 505K	35
CCR BONAFIDE 5116F	102	GW OUTBACK 485F	68	KBHR GUNSMOKE J131	25	TJ 50K 485H	23
CCR COCHISE 4142H	100	GW TRIPLE CROWN 018C	90	KBHR HANDYMAN H124	43	TJ BLACK ICE 451H	124
CCR FIRE POWER 8081J	118	GW WINDFALL 285J	98	KBHR HARTLAND H100	58	TJ BONAFIDE 647H	123
CCR KIOWA 5065H	39	HA AMPLITUDE 9J	97	KBHR HIGH ROAD E283	8	TJ CHIEF 460G	88
CCR NATIONWIDE 4503J	119	HA COVENANT 30K	33	KBHR HONOR H060	7	TJ GOLD 274G	14
CCR POUNDER 2045F	101	HA JUSTICE 30J	20	KBHR KEYNOTE K229	30	TJ HEISMAN 388F	50
CCR THR EL DORADO 4142J	63	HOOK'S BEACON 56B	37	KBHR PRIME CUT J160	44	TJ NEBRASKA 258G	126
CCR WACO 4142G	99	HOOK'S EAGLE 6E	57	KBHR ROCK CREEK RIBEYE J152	95	TJ POWER PLAY 422H	17
CIRCLE COMPASS J258	64	HOOK'S ENCORE 65E	21	KBHR STEAKHOLDER J188	45	TJ STONE COLD 336G	89
CLRS HERO 8086H	47	HOOK'S FLINT 2F	69	KCC EXCELLENCE 139-774	86	TJ TROOPER 504J	61
CLRS HOMELAND 327H	103	HOOK'S FOREFRONT 16J	41	KCC JUDGE 258-J058	85	TSN ARCHITECT J618	96
CLRS INSPIRED 0110K	66	HOOK'S FREEDOM 45F	40	LBR5 GENESIS G69	6	TSN HOMESTEADER K023	115
CLRS JEFFERSON 951J	83	HOOK'S FRONTLINE 40F	48	LBR5 THOR J320	26	WS 38 SPECIAL 20H	76
CLRS JERICHO 336J	109	HOOK'S GALANT 58G	49	LCDR RESERVE 210J	10	WS FULL HOUSE 36K	55
CLRS JOHNNY WALKER 1049J	24	HOOK'S GALILEO 210G	56	LCRR THR HEART TO HEART 1231J	82	WS FULL PAY 68K	75
CLRS JUSTIFIED 7101J	110	HOOK'S HERCULES 209H	71	LRS DUTTON 611K	29	WS HOLLYWOOD 79H	77
CLRS KANGAROO 956K	65	HOOK'S JOURNEY 7J	93	LRS FALCON 442G	15	WS JESSE JAMES 31J	59
CLRS KING JAMES 616K	28	HSF CARDINAL 133G	72	LRS RARITY 983J	114	WS PROCLAMATION E202	9
DTR SOUTH FORTY 250J	54	IR/JLN BOOMER J425	12	MILL BRAE COMRADE	128		
EGL CCR RAWHIDE 137J	125	IRON CREEK ANTHEM 14J	18	MR FR MIC CHECK K4	32		
EGL FIREMAN 111F	94	IRON CREEK NEVER SAY NEVER 9	127	MR ISHEE LIGHTS OUT 114J	60		



“*For seedstock producers and their customers, it is important to understand how your cattle stack up to the average in terms of feeding performance and carcass traits. Where do they deliver value and where don't they?*”

-John Schroeder, Darr Feedlot



CLINT BERRY 417-844-1009  
Managing Partner

MARTY ROPP 406-581-7835  
ROCKY FORSETH 406-590-7984

*Delivering value with  
customer service.*

Allied Feeding Partners is serious about the profit potential in superior genetics.

Future focused on the larger beef business.

Contact us today.





# *Reaching the World's LARGEST Buyer Base.*

**IF YOU ARE A RANCHER** with uniform load lots and purchase genetics from reputable Allied seedstock providers, **Contact the Clint Berry Marketing Group** to get the most out of your next load of feeder cattle.



***Market Your Cattle The Superior Way!***



## **CLINT BERRY**

**417-844-1009**

*Justin, TX*

*Marketing high quality cattle, coast to coast, to a national buyer base.*

## **ROCKY FORSETH**

**406-590-7984**

*Helena, MT*

*Serving customers nationwide.*

## **JAKE FEDDES**

**406-581-8157**

*Manhattan, MT*

*Serving Montana, Wyoming and Idaho Region.*

## **LOGAN BUTCHER**

**406-350-1417**

*Lewistown, MT*

*Serving Montana and beyond.*

## **JAKE BAUMAN**

**701-321-0473**

*Linton, ND*

*Serving the Northern Plains Region.*

## **KYLEY DEVOE**

**940-367-4708**

*Justin, TX*

*Serving Texas and the southwest.*

**[www.superiorlivestock.com](http://www.superiorlivestock.com)**

**[www.alliedgeneticresources.com](http://www.alliedgeneticresources.com)**



## Additional Semen Available

NAME	REG. NO.	COLOR	%	PRICE	\$API	\$TI	FOOTNOTE
BRIDLE BIT BEST MAN F839	3423917	RED	PB SM	\$15.00	133.7	72.7	Becoming more popular with age. Outcross Red genetics with very attractive type.
CAMP CAMPBELL E737	3319012	BLK	PB SM	\$20.00	146.8	85.3	Total outcross Purebred. Maternal sire with very attractive daughters.
CDI MAVERICK 335B	2853061	RED	PB SM	\$15.00	144.3	85.1	Higher growth Xpectation son. Great daughters as Xpected!
GIBBS 0689X CRIMSON TIDE	2602503	BWF	PB SM	\$40.00	129.8	87.1	Old school growth baldy bull. Adds frame and length. Very limited supply.
HOOK`S BOZEMAN 8B	2854480	BLK	PB SM	\$20.00	153.9	81.9	Highly proven maternal sire that adds rib, volume and stoutness to every calf.
HOOK`S RED ZONE 79Z	2674963	RED	PB SM	\$25.00	153.0	89.0	Highly proven Beef King son. Still makes some of the best red sons of any sire!
HOOK`S YUKON 80Y	2612543	RED	PB SM	\$15.00	149.4	86.0	Makes cookie cutter daughters with great udders. Top 5% STAY.
IR ZEUS A718	2810652	BLK	PB SM	\$20.00	172.1	91.4	Pure outcross maternal! Sires some of the best females in the breed.
KBHR DUALY H167	3789554	RED	PB SM	\$30.00	186.1	102.2	Early proof has been tremendous on this more growth oriented Imperial son.
KOCH LC MONTE 803U	2471172	BLK	PB SM	\$20.00	123.8	79.8	Outcross power bull. Growth and muscle!
MLC MR BEEFMAKER X263	2549197	RED	PB SM	\$12.00	144.3	84.9	Big, powerful Beef Maker son that adds STAY, Milk and power.
NLC GEN TEN 82E	3317984	BLK	PB SM	\$15.00	136.4	77.9	Total outcross maternal Purebred. 10 Generations of reputation NLC cows.
RFS BULLETPROOF B42	2930104	RED	PB SM	\$25.00	134.1	92.7	Dark red, outcross Purebred is still siring lots of high sellers. Top 1% Growth.
SLN AVONDALE E8062	3250533	BLK	PB SM	\$20.00	160.5	83.4	High marbling, very maternal IR Zues son. More outcross options!
TJ HIGH PLAINS 986E	3288842	BLK	PB SM	\$20.00	153.7	88.7	Proven Cowboy Cut son. Sires great females with more growth, size and stretch.
TJ JACKPOT 525D	3148740	BLK	PB SM	\$20.00	145.4	71.1	Outcross maternal sire. Great TJ Gambler sired Dam has 9@112 for WW.
WS ZENITH Z55	2675747	RED	PB SM	\$15.00	145.0	86.4	Big framed, fast growing progeny. Lots of STAY. Great on Red Angus females.
NAME	REG. NO.	COLOR	%	PRICE	\$API	\$TI	FOOTNOTE
CCR SPEAK NOW 6178G	3703453	BLK	75%	\$25.00	148.0	90.7	Wonderful phenotype, balance and quality. High Grow, STAY and Doc.
GW LUCKY BOY 252U	2471391	BLK	75%	\$30.00	134.8	82.2	Highly proven, Outcross Calving Ease and Maternal sire. Wonderful udders.
GW OUTBACK 485F	3389831	BLK	75%	\$20.00	145.3	91.8	Big time outcross genetics! Sons have extras size and stretch and sell very well.
JC MR FINAL PRODUCT 209F	3433351	BLK	75%	\$20.00	172.3	88.7	Tremendous STAY, MB and REA. More proof is making him more popular.
KBHR GENETIC FORCE G095	3618714	BLK/HET	75%	\$30.00	190.0	101.0	Needs more use! Top 1% MB and 4% STAY. Will make a great red PB soon!
SHSF FREIGHTLINER D10	3173521	BLK	75%	\$20.00	129.3	87.5	Huge growth and great uddered, attractive daughters are his claims to fame.
NAME	REG. NO.	COLOR	%	PRICE	\$API	\$TI	FOOTNOTE
A3R TRILOGY 54C	3020858	RWF	25%	\$25.00	149.6	82.8	Proven Red, white faced genetics. Tremendous phenotype and a shot of Marbling.



## Additional Semen Available

NAME	REG. NO.	COLOR	%	PRICE	\$API	\$TI	FOOTNOTE
BRIDLE BIT REMBRANDT D630	3137473	BLK	SIMANGUS	\$20.00	158.2	80.2	Wonderful structure and type with high STAY and Carcass value.
C-3 GROUND BREAKER NS G953	3708449	BWF	SIMANGUS	\$25.00	165.5	92.0	The most outcross baldy SimAngus bull available. Maternal and carcass too.
CCR WICHITA 4069D	3149505	BLK	SIMANGUS	\$15.00	128.1	71.0	Highly proven, slam dunk calving ease. Calves are attractive and easy to sell.
EAGLE PASS CONVERSION	3080731	BLK/HET	SIMANGUS	\$20.00	154.2	89.3	Proven maternal genetics. Extra spread and level attractive profile. Make a red!
EGL CINCHED 116F	3498948	BLK	SIMANGUS	\$20.00	177.2	97.4	Underused Calving Ease and Spread bull with outstanding phenotype!
GCCR EASY ANSWER Y108	2622776	BLK	SIMANGUS	\$20.00	152.7	88.5	Long proven heifer bull. Wonderful carcass with moderate, valuable daughters.
GIBBS 5063C HOME RUN	3104722	BLK	SIMANGUS	\$15.00	125.1	73.0	Sleep all night Calving Ease. Makes easy fleshing, big volumed progeny.
GIBBS 6155D SUPER DUTY	3256504	BLK	SIMANGUS	\$20.00	145.6	78.5	Cookie cutter, moderate, productive and attractive daughters. Great docility too!
GIBBS 6176D FACEBOOK	3256169	BWF	SIMANGUS	\$20.00	133.9	94.2	Simply makes fast growing, thick ended, massive baldies.
GIBBS 7124E STONEWALL	3405044	BLK	SIMANGUS	\$20.00	152.4	88.4	Proven spread genetics with extra muscle. Expect improved docility as well.
GIBBS 8035F XCITE	3568976	BLK	SIMANGUS	\$15.00	153.4	86.0	Unique SimAngus pedigree with lots of added Marbling genetics.
GW MONARCH 387G	3548872	BLK	SIMANGUS	\$20.00	161.8	85.9	Solid, no holes heifer bull with added maternal and marbling genetics.
GW PROSPECTOR 389C	3012758	BLK	SIMANGUS	\$20.00	153.5	90.1	Highly proven Calving Ease and Spread sire with added Marbling and REA.
GW SCC CARRY ON 576D	3116966	RED	SIMANGUS	\$20.00	170.3	92.0	The more he gets used, the more he gets liked! Spread and marketability.
GW-SCC DIRECT DRIVE 064G	3548763	RED	SIMANGUS	\$20.00	183.8	89.3	Deserves more use as one of the best red heifer bulls of any breed! 3/8 Sim.
HOOK`S XAVIER 14X	2559356	BLK	SIMANGUS	\$15.00	136.3	88.0	Old school, highly proven growth and maternal sire. Still relevant today.
HOOKS ADMIRAL 33A	2716194	BLK	SIMANGUS	\$15.00	137.5	86.7	Massive , terminal machine of a sire. Tremendous thickness, grow and docility.
IR CAPITALIST E041	3344847	BLK	SIMANGUS	\$20.00	189.1	99.4	Great spread and profit. Daughters exceptional. Doc EPD is grossly exaggerated!
JC JOURNEY 610E	3281756	BLK	SIMANGUS	\$15.00	151.0	78.3	Outcross heifer bull. Daughters are moderate, easy keeping and productive.
JC MR FIVE STAR 532G	3556447	BLK	SIMANGUS	\$20.00	134.3	94.9	Great structured, exceptional growth and power bull. Top 1% MWW as a bonus.
JC MR NATIONAL 610Y	2616993	BLK	SIMANGUS	\$20.00	172.3	86.9	High output maternal genetics with near perfect udders. Top 2% Marb. too.
J-J ZINSER 514C	2965068	BLK	SIMANGUS	\$20.00	114.8	88.6	Stunning, high growth and high phenotype sons. Most use him multiple years.
KBHR WENTZ E190	3312184	BLK	SIMANGUS	\$15.00	112.0	83.9	Massive bodied, high growth phenotype in every single calf.
RLWF PROPHET MARGIN 1393	2889313	BLK	SIMANGUS	\$15.00	171.6	88.2	Tremendous heifer bull! Moderate, heavy miking daughters with great udders.
S D S ALUMNI 115X	2548149	BLK	SIMANGUS	\$15.00	156.3	88.0	Breed him to 10 or 1000 females, works every time. Grow, daughters, carcass.
TFS DUE NORTH 2659Z	2654477	BLK	SIMANGUS	\$20.00	150.0	85.0	Highly proven Calving Ease and maternal sire, excellent udders. Consistent sons.
TJ COMMISSIONER 421G	3611962	BLK	SIMANGUS	\$20.00	160.9	89.0	Proven Calving Ease and Spread bull with consistently good calves. Worth a try!
TJ DIPLOMAT 294D	3148116	BLK	SIMANGUS	\$20.00	147.2	85.7	Makes some of the most physically beautiful, good uddered daughters in the breed.
TJ FIRST CUT 1109C	3022818	BLK	SIMANGUS	\$20.00	166.8	91.9	Underused Maternal and Carcass improver. Great cow family too!
TJ FLAT IRON 259G	3582543	BLK	SIMANGUS	\$20.00	177.0	100.3	Adds lots of look, lots of Calving Ease, lots of Marb. and lots of maternal longevity.
TJ MARLBORO MAN 360A	2773927	BLK	SIMANGUS	\$20.00	168.7	83.8	One of the highest STAY SimAngus bulls on the planet. Daughters are flat good.
TJ POWER GRID 363Y	2630928	BLK/HET	SIMANGUS	\$20.00	112.1	69.8	He adds power, just like his name says. Big, beautiful, productive daughters too.
W/C UNITED 956Y	2614725	BLK	SIMANGUS	\$25.00	121.5	86.3	Few growth bulls in history have ever made them more attractive and stout!





2245 Ropp Road  
Normal, IL 61761

Presorted  
First Class  
US Postage  
**PAID**  
SlateGroup

# Serious Genetic Value.